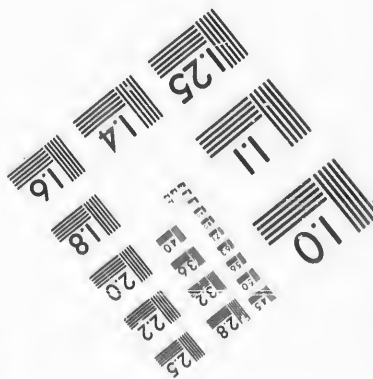
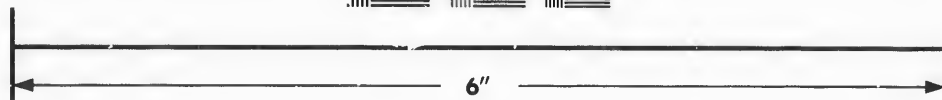
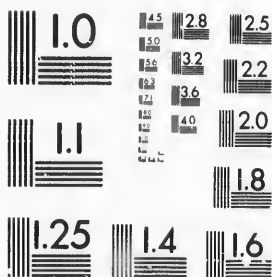


**IMAGE EVALUATION
TEST TARGET (MT-3)**



**Photographic
Sciences
Corporation**

23 WEST MAIN STREET
WEBSTER, N.Y. 14580
(716) 872-4503

15
18
20
22
25
28
32
36
40
45

**CIHM/ICMH
Microfiche
Series.**

**CIHM/ICMH
Collection de
microfiches.**



Canadian Institute for Historical Microreproductions / Institut canadien de microreproductions historiques

10

© 1987

Technical and Bibliographic Notes/Notes techniques et bibliographiques

The Institute has attempted to obtain the best original copy available for filming. Features of this copy which may be bibliographically unique, which may alter any of the images in the reproduction, or which may significantly change the usual method of filming, are checked below.

L'Institut a microfilmé le meilleur exemplaire qu'il lui a été possible de se procurer. Les détails de cet exemplaire qui sont peut-être uniques du point de vue bibliographique, qui peuvent modifier une image reproduite, ou qui peuvent exiger une modification dans la méthode normale de filmage sont indiqués ci-dessous.

- | | |
|--|--|
| <input checked="" type="checkbox"/> Coloured covers/
Couverture de couleur | <input type="checkbox"/> Coloured pages/
Pages de couleur |
| <input checked="" type="checkbox"/> Covers damaged/
Couverture endommagée | <input type="checkbox"/> Pages damaged/
Pages endommagées |
| <input type="checkbox"/> Covers restored and/or laminated/
Couverture restaurée et/ou pelliculée | <input type="checkbox"/> Pages restored and/or laminated/
Pages restaurées et/ou pelliculées |
| <input type="checkbox"/> Cover title missing/
Le titre de couverture manque | <input checked="" type="checkbox"/> Pages discoloured, stained or foxed/
Pages décolorées, tachetées ou piquées |
| <input type="checkbox"/> Coloured maps/
Cartes géographiques en couleur | <input type="checkbox"/> Pages detached/
Pages détachées |
| <input type="checkbox"/> Coloured ink (i.e. other than blue or black)/
Encre de couleur (i.e. autre que bleue ou noire) | <input checked="" type="checkbox"/> Showthrough/
Transparence |
| <input type="checkbox"/> Coloured plates and/or illustrations/
Planches et/ou illustrations en couleur | <input type="checkbox"/> Quality of print varies/
Qualité inégale de l'impression |
| <input type="checkbox"/> Bound with other material/
Relié avec d'autres documents | <input type="checkbox"/> Includes supplementary material/
Comprend du matériel supplémentaire |
| <input type="checkbox"/> Tight binding may cause shadows or distortion
along interior margin/
La reliure serrée peut causer de l'ombre ou de la
distorsion le long de la marge intérieure | <input type="checkbox"/> Only edition available/
Seule édition disponible |
| <input type="checkbox"/> Blank leaves added during restoration may
appear within the text. Whenever possible, these
have been omitted from filming/
Il se peut que certaines pages blanches ajoutées
lors d'une restauration apparaissent dans le texte,
mais, lorsque cela était possible, ces pages n'ont
pas été filmées. | <input type="checkbox"/> Pages wholly or partially obscured by errata
slips, tissues, etc., have been refilmed to
ensure the best possible image/
Les pages totalement ou partiellement
obscurcies par un feuillet d'errata, une pelure,
etc., ont été filmées à nouveau de façon à
obtenir la meilleure image possible. |
| <input type="checkbox"/> Additional comments:/
Commentaires supplémentaires: | |

This item is filmed at the reduction ratio checked below/
Ce document est filmé au taux de réduction indiqué ci-dessous.

10X	14X	18X	22X	26X	30X
<input type="checkbox"/>	<input type="checkbox"/>	<input type="checkbox"/>	<input checked="" type="checkbox"/>	<input type="checkbox"/>	<input type="checkbox"/>
12X	16X	20X	24X	28X	32X

The copy filmed here has been reproduced thanks to the generosity of:

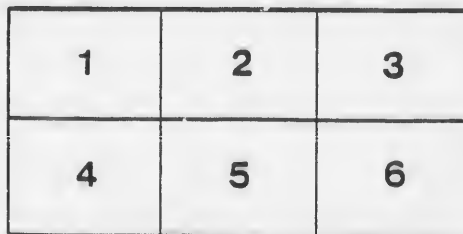
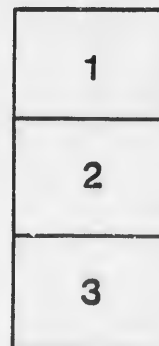
The Nova Scotia
Legislative Library

The images appearing here are the best quality possible considering the condition and legibility of the original copy and in keeping with the filming contract specifications.

Original copies in printed paper covers are filmed beginning with the front cover and ending on the last page with a printed or illustrated impression, or the back cover when appropriate. All other original copies are filmed beginning on the first page with a printed or illustrated impression, and ending on the last page with a printed or illustrated impression.

The last recorded frame on each microfiche shall contain the symbol \rightarrow (meaning "CONTINUED"), or the symbol ∇ (meaning "END"), whichever applies.

Maps, plates, charts, etc., may be filmed at different reduction ratios. Those too large to be entirely included in one exposure are filmed beginning in the upper left hand corner, left to right and top to bottom, as many frames as required. The following diagrams illustrate the method:



L'exemplaire filmé fut reproduit grâce à la générosité de:

The Nova Scotia
Legislative Library

Les images suivantes ont été reproduites avec le plus grand soin, compte tenu de la condition et de la netteté de l'exemplaire filmé, et en conformité avec les conditions du contrat de filmage.

Les exemplaires originaux dont la couverture en papier est imprimée sont filmés en commençant par le premier plat et en terminant soit par la dernière page qui comporte une empreinte d'impression ou d'illustration, soit par le second plat, selon le cas. Tous les autres exemplaires originaux sont filmés en commençant par la première page qui comporte une empreinte d'impression ou d'illustration et en terminant par la dernière page qui comporte une telle empreinte.

Un des symboles suivants apparaîtra sur la dernière image de chaque microfiche, selon le cas: le symbole \rightarrow signifie "A SUIVRE", le symbole ∇ signifie "FIN".

Les cartes, planches, tableaux, etc., peuvent être filmés à des taux de réduction différents. Lorsque le document est trop grand pour être reproduit en un seul cliché, il est filmé à partir de l'angle supérieur gauche, de gauche à droite, et de haut en bas, en prenant le nombre d'images nécessaire. Les diagrammes suivants illustrent la méthode.



NOVELTY EXHIBITION

EXHIBITION

1891



TO BE HELD

AT

HALIFAX

Sept. 29th 30th

Oct. 1st & 2nd

PICKFORD & BLACK,
Ship Brokers & Steamship Agents,
HALIFAX, N. S

AGENCIES:

FURNESS LINE OF STEAMSHIPS

BETWEEN

London and Halifax.

DONALDSON LINE OF STEAMSHIPS

BETWEEN

Glasgow and Halifax.

PICKFORD & BLACK'S STEAMSHIP LINES

BETWEEN

Halifax, Bermuda, Turks Island, and Jamaica,

AND

Halifax, Matanzas, and Havana, Cuba,

AND

Halifax, Bermuda, St. Thomas, St. Kitts, Antigua, Guadeloupe, Martinique,
Dominica, St. Lucia, Barbadoes, Trinidad, and Demerara,

AND

Halifax and Charlottetown via Eastern Shore and Cape Breton Ports.

HALIFAX AND NEWFOUNDLAND S. S. CO., Ltd.

BETWEEN

Halifax, St. Peter's, Baddeck, Grand Narrows, North Sydney, Sydney,
Ingonish, Neil's Harbor, Aspy Bay, Channel, Codroy, Bay St. George, Bay
of Islands, Bonne Bay, and Flowers' Cove.

YARMOUTH STEAMSHIP COMPANY, Ltd.

BETWEEN

Halifax and Yarmouth via Intermediate Ports.

All the above Steamers have Saloons and Staterooms Amidships, and carry Stewardess.

ents,

NOVA SCOTIA

Agricultural Exhibition

—AND—

INDUSTRIAL FAIR.

The Provincial Show of Live Stock, Agricultural and Horticultural Products, Arts and Manufactures.

LIST OF PREMIUMS, RULES AND REGULATIONS

IES

—OF THE—

Provincial Exhibition,

TO BE HELD IN THE

ROYAL EXHIBITION BUILDING AND GROUNDS,

IN THE

CITY OF HALIFAX,

From 29th September till 2nd October,

1891,

UNDER AUTHORITY OF THE PROVINCIAL PARLIAMENT
AND CORPORATION OF THE CITY OF HALIFAX.

NO CHARGE FOR ENTRY OF EXHIBITS.

OFFICE OF THE COMMISSIONERS:
PROVINCIAL BUILDING, HALIFAX, N. S.

PRINTED BY WM. MACNAB, 3 PRINCE ST., HALIFAX, N. S.

the List.

NS
606
H
1891

When in the city don't fail to visit

GORDON & KEITH,
HOUSE FURNISHERS,
HALIFAX,
N.S.

6134

His
 His
 His
 Hon
 "
 "
 Tho
 Hon
 "
 "
 "
 "
 Vice-
 I
 C
 C
 V
 H
 Hon's
 Finan
 J.
 T
 C
 m
 Print
 Hon
 C
 T
 Groun
 Alde
 CH
 M
 Lo
 Th

Visit



PATRONS.

- His Excellency General Sir JOHN ROSS, K.C.B., Commander-in-Chief of the Forces in British North America.
 His Excellency Vice-Admiral GEORGE W. WATSON, Commander-in-Chief of the North American and West India Station.
 His Honor MALACHY BOWES DALY, Lieutenant-Governor of Nova Scotia.

Honorary Committee.

- | | |
|--|---|
| Hon. A. G. JONES, Privy Councillor. | Hon. GEORGE MURRAY, Member Ex. Coun. |
| " I. G. POWER, Senator. | " COLIN McISAAC, " " |
| " W. J. ALMON, Senator. | " ROBERT BOAK, Pres. Legislative Coun. |
| THOMAS E. KENNY, M.P. | WILLIAM ROCHE, M.P.P. |
| Hon. W. S. FIELDING, Provincial Secretary. | DAVID McPHERSON, Esq., Mayor of Halifax. |
| " J. WILBERFORCE LONGLEY, Att'y-Gen. | W. C. SILVER, Esq., President Halifax Co. Agricultural Society. |
| " CHARLES E. CHURCH, Com. Works and Mines. | ANDREW DOWNS, Esq., Presid't Nova Scotia Poultry Association. |
| " THOMAS JOHNSON, Member Ex. Coun. | |
| " DANIEL McNEILL, " " | |

BOARD OF COMMISSIONERS.

- | | |
|---|---|
| <i>President, JOHN F. STAIRS, M.P.</i> | |
| <i>Vice-President, ALDERMAN HAMILTON.</i> | <i>Vice-President, M. J. POWER, M.P.P.</i> |
| B. W. Chipman, Esq. | Alex. Stephen, Esq. |
| George J. Troop, Esq. | James Gordon, Esq. |
| C. W. Anderson, Esq. | A. B. Macdonald, Esq. |
| W. J. Veith, Esq. | John P. Longard, Esq. |
| Herbert Harris, Esq. | Robert Taylor, Esq. |
| <i>Hon'y. Treas., ROBERT TAYLOR, Esq.</i> | <i>Hon'y. Sec'y., Prof. GEORGE LAWSON, PH.D., LL.D.</i> |
| <i>Referee and Consulting Veterinary Surgeon, WILLIAM JAKEMAN, V.S.</i> | |
| <i>Acting Secretary, WILLIAM McKERRON.</i> | |

SPECIAL COMMITTEES.

Finance and Tickets:

J. F. Stairs, M. P., Chairman; Robert Taylor, Vice-Chairman; W. J. Stewart, C. W. Anderson, Alex. Stephen, Alderman Hamilton.

Printing, Advertising and Stationery:

Hon. M. J. Power, Chairman; Dr. A. C. Cogswell, Alex. Stephen, George J. Troop.

Grounds, Buildings, Decorations and Police:

Alderman McIntosh, Chairman; B. W. Chipman, Alderman Hamilton, Hon. M. J. Power, W. J. Veith, J. P. Longard, Alex. Stephen.

Appointment of Judges:

Alderman Hamilton, Chairman; Alderman Sanford, W. J. Stewart, C. W. Anderson, B. W. Chipman, A. B. Macdonald, Herbert Harris, R. Taylor, Hon. M. J. Power.

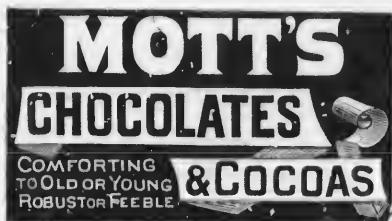
Refreshments, Bands and Special Attractions:

W. J. Stewart, Chairman; Alderman Hamilton, Geof. Morrow, Frank Bell, J. W. Power, Thos. Mitchell, Colonels Curran, Walsh and Humphrey.

Press Room:

Charles H. Cahan, M. P. P., Chairman; C. C. Blackadar, Henry W. Barnes, Alderman Dennis, F. W. Bowes, W. R. Dunn.

The other Committees appear at the head of the various departments in the Prize List.



JOHN P. MOTT & CO.,

— MANUFACTURERS OF —

Pure Chocolate,

FOR CONFECTIONERS' USE.

Sweet Chocolate Coatings,

WITH OR WITHOUT VANILLA.

Drinking, Cooking and Eating Chocolates.

COCOA and BROMA,

All made from the choicest of Cocoa Beans, and guaranteed of excellent quality.

Recommended by Physicians as much more healthful than Tea or Coffee.

Use MOTT'S PURE SPICES,

MANUFACTURED BY

JOHN P. MOTT & CO.,

Corner Duke & Hollis Sts.,

HALIFAX, N. S.

Works : DARTMOUTH, N. S.

General Rules and Regulations.

Intending Exhibitors and Visitors are particularly requested to read carefully and consider the following Rules and Regulations governing the Exhibition which will be in all cases strictly enforced.

ADMISSION TO THE GROUNDS.

The price of admission will be—adults, 25 cents, children, 10 cents, each time of entering and each person must be provided with a proper ticket before entering.

Tickets will be on sale at different places throughout the city, and also at the ticket boxes on either side of main building.

Necessary attendants upon Stock and Machinery will be furnished with special passes. Not more than one attendant's ticket will be issued to any exhibitor except in the case of Live Stock and Machinery which may require extra attendants. As these tickets are positively not transferable under any circumstances, exhibitors who may desire to change their attendant must have their tickets exchanged at the Secretary's office.

Judges and members of the Press will be furnished with badges.

The entry tickets upon animals or articles will admit the person bringing them to the Show Grounds for exhibition along with such animals or articles without the use of any other ticket. Afterwards such persons must be provided with proper passes as above.

ENTRIES.

All entries must be made on the printed forms accompanying the Prize List. These forms are to be filled up and signed by the exhibitors and sent to the Secretary at Halifax on or before the following date, viz :—For Live Stock, Poultry, Dogs, Dairy Produce, Ladies' Work, Fine Arts, and all classes of manufacture, before

SATURDAY, THE 29TH AUGUST.

Grain, Field Roots, Fruits, and Horticultural Products, before

SATURDAY, THE 19TH SEPTEMBER.

Exhibitors will please take notice that it is absolutely necessary the entries be made on or before the dates above mentioned in order to give sufficient time for examining entry papers, forwarding entry tickets, and corresponding for the correction of errors and omissions. No exception will be made to this rule on any consideration whatever.

In the Horse, Cattle, Sheep, Swine, Poultry and Dog classes, the entry must be made in the name of the *bona fide* owner. Unless this rule is observed no premium will be awarded, or if awarded, will be withheld. (See Special in regard to Horses, etc.)

In all other classes entries must be made in the names of the producers or manufacturers only, and by such producers themselves in person or their agents who must have special author

To our Friends and Patrons.



WE take pleasure in directing your attention to our **NEW STORE**, which is the finest and best equipped in the Maritime Provinces.

WE would particularly point out the fine assortment of

* COMBS, * BRUSHES, *
* PERFUMES, * POMADES, *



PATENT MEDICINES,



—AS WELL AS THE SUPERIOR QUALITY OF THE—

Pharmaceutical and Chemical Products used in Dispensing.

All orders entrusted to us will receive prompt and careful attention. Soliciting a continuance, and an increase of the patronage hitherto extended to this establishment,

We are, yours truly,

BROWN BROS. & CO.,

DUFFUS CORNER, HALIFAX, N. S.

AGENTS for the **Celebrated Poland Water, Butcher's Inhaler, French Magnetic Belts, Soles, &c.**

We keep a Night Clerk on the premises. Please note our new address, "Duffus' Corner."

TRUSSES AND SUPPORTERS A SPECIALTY.

ity for doing so, and who shall produce their written authority if so required by the Judge. If any person other than the authorized agent shall enter an article for competition as produced or manufactured by himself, when it has not really been so, he shall forfeit any premiums which may be awarded the article.

A merchant who sells a line of goods which are handled by other merchants shall not be considered an agent for such goods.

No person will be allowed to enter for exhibition more than one specimen in any one section of a class unless the additional article be of a distinct named variety or pattern from the first. The rule shall not apply to animals, but to all kinds of Grains, Plants, Roots, Vegetables, Fruit, manufactured articles, &c., &c., in which each additional specimen would necessarily be precisely similar to the first.

EXTRA ENTRIES.—Every article must be entered under some of the headings in the regular list when possible; but if any article is of a distinct character from anything specified in the list it may be entered in the class with which it most nearly corresponds.

On the entry of each animal or article a card will be furnished the exhibitor specifying the name, class, section, number of entry and name of exhibitor. This card must be attached to the animal or article, and remain so during the Exhibition.

In all cases the right is reserved to reject entirely or accept conditionally any entry or application. Under no circumstances will articles which are offensive by reason of their odour or appearance, or which are dangerous by reason of their combustible or explosive character be admitted. If any such articles be introduced by an exhibitor through misapprehension or otherwise they may be removed by order of the Directors.

SPACE

There are no charges for space. Application for space for the exhibit of all classes of manufactures should be made to the Secretary as early as possible. Space will be allotted according to the order in which applications are received.

PREPARATORY WORK.

On and after Monday 14th September, exhibitors, their agents and workmen, will be admitted to the buildings and grounds from 7 a. m. till 6 p. m. daily for the purpose of making preparatory structures, or getting machinery and implements into position.

DELIVERY OF LIVE STOCK AND ARTICLES ON GROUNDS.

Horses, Cattle, Sheep, Swine, Poultry and Dogs, may be delivered on the grounds on Saturday the 26th September, but in no case will they be received later than the evening of Monday the 23rd September.

Agricultural and Dairy Products must be delivered on the grounds and arranged for exhibition by evening of Saturday the 26th of September.

Fruit, Plants, Flowers, Roots and Vegetables, must be delivered and arranged for exhibition before nine o'clock on the morning of Tuesday, 29th of September.

Fine Arts, Ladies' and Children's work, must be delivered not later than noon on Monday the 28th of September, in order that they may be properly classified and arranged previous to the opening.

All other articles, implements, machinery, stoves, manufactures of all kinds, etc., must be placed in position by 6 p. m. Saturday the 26th of September.

As it is intended to have the Exhibition fully open to the public at the time named, exhibitors are specially notified that articles or animals arriving after the above dates will be excluded from competing.

ESTABLISHED 1860.

DeWolfe, Son & Co.,

North West Common,

HALIFAX, N. S.

MANUFACTURERS OF

FINE CARRIAGES,

INCLUDING

Barouches,
Broughams,
Landaus,
Phaetons,



Buggies, Open and Close,
Concord Wagons,
Express Wagons,
T Carts.

And Carriages of every Description.

Also, Spokes, Hubs, Wheels, Gears & Bodies.

We have the largest and best equipped Carriage Factory in the Lower Provinces. Visitors to the Exhibition should not fail to see our Exhibit and inspect our Extensive Works.

LE BON MARCHÉ,

MILLINERY.

Ladies visiting the Capitol during the Exhibition season are respectfully invited to call and inspect our Stock of

MILLINERY GOODS.

We have buyers in the cities of London and New York, whereby we are in a position to obtain the Latest Millinery Novelties soon as produced by the makers.

INFANTS' HEADWEAR

Is a Special Line with us. We carry a full range and can always please you. Anything required in Millinery Goods we can give you, and prices are the lowest.

LE BON MARCHÉ,

19 Barrington Street, - - HALIFAX, N. S.

Exhibitors of Machinery and other heavy articles are expected to have them on the grounds and placed in position the week preceding the Exhibition.

All boxes, wrappings, and other packing materials must be cleared away and everything in proper order by 6 p. m. on Monday the 28th of September.

Exhibitors must provide for the delivery of their exhibits upon the Exhibition grounds. The Directors cannot in any case make provision for their transportation or be subjected to any expense either in their delivery or return from the grounds. All expenses connected therewith must be defrayed by the owners.

Exhibitors on arriving with their exhibits will apply at the office of the Secretary when they will be informed where the articles are to be placed.

Exhibitors will at all times give the necessary personal attention to whatever they have on exhibition, and at the close take entire charge of the same.

Articles placed on exhibition must not be removed until the close, except by permission of the Directors, except in Fruit, Vegetable, and Floral sections, where such removal is necessary to a continuous display.

Every facility will be afforded for the transaction of business by taking orders, but no delivery of articles sold can be made on the premises during the Exhibition except by special arrangement with the Directors.

Though the Directors will take all reasonable precautions to ensure the safety of articles sent for exhibition, yet it is to be distinctly understood the owners themselves must take the risk of exhibiting them; and that should any article be accidentally injured, lost or stolen, the Directors will give all the assistance in their power towards the recovery of the same but WILL NOT MAKE ANY PAYMENT for the value thereof.

At the close of the Exhibition exhibitors must take charge of their exhibits, and remove the same as early as possible. Any articles or fixtures left in the buildings or grounds will be at the risk of their owners.

LIVE STOCK.

Good buildings are provided for all kinds of Live Stock, and a plentiful supply of water will be furnished free. Hay, straw, grain and all kinds of feed will be for sale on the grounds at lowest prices. Exhibitors are requested to report at once if unreasonable prices are exacted.

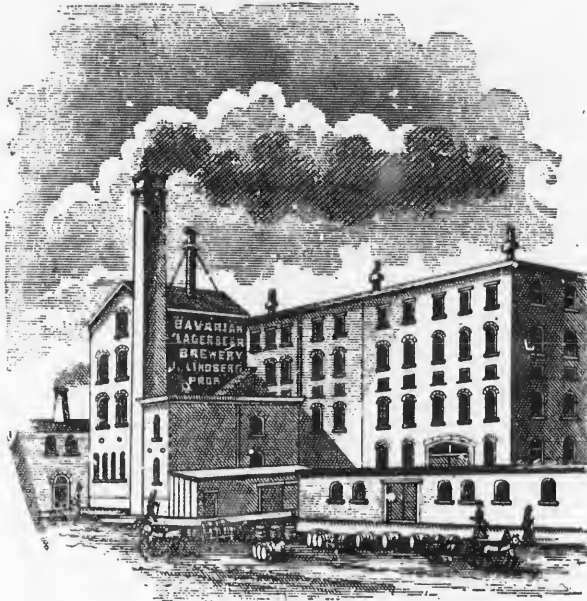
The production of any of the animals in the Horse Ring may be ordered by either of the Committee on Live Stock or the Directors for review or other purposes at any time during the Exhibition; and any exhibitor or attendant refusing to bring such animal into the ring when so required shall forfeit all premiums which may have been awarded to the owner of such animal.

PROCESSES OF MANUFACTURE.

A portion of the ground is fitted up with shafting and power specially for the exhibition of processes of manufacture. The Directors hope that manufacturers who are in a position to assist in this feature of the Exhibition will send some of the machines used by them in the manufacture of their products, for it is certain they will be amply repaid for their trouble by the benefits they must receive from such a public advertisement.

DIPLOMAS.

Diplomas will be awarded to meritorious exhibits in the different classes subject to the approval of the Directors. Exhibitors may also receive diplomas in lieu of money prizes should they prefer to do so.



BAVARIAN LAGER BEER BREWERY.

J. LINDBERG,

Brewer of

Bavarian, Pilsener & Export

LAGER BEER,

HALIFAX, N. S.

P. O. Box, 467.

for
rate

bein

paym
must
the T
before
the a
A
above
ber o

The
receiv
tary.

N
or art
It

as to t
award

It
of sen
examin
made n

Ju
make a

Th
the Sec
judged.

In
inferior
article
premium

It e
must be
cient m
fact.

In a
mals or
by tick
entitle t
No a

RAILWAYS, STEAMBOATS, &c.

Favorable arrangements have been made with all the Railway and Steamboat Managers for the conveyance of passengers and exhibits to and from the Exhibition at greatly reduced rates, and for special excursions.

Live Stock and all other exhibits sent as freight will be returned free on the freight being paid one way—that is to Halifax.

PAYMENT OF PRIZES.

The Secretary will be prepared to commence giving orders upon the Treasurer for the payment of premiums on Friday morning, the 2nd of October, at his office. These orders must be endorsed, as they will be payable to order (not to bearer), and on presentation to the Treasurer properly endorsed will be paid.

Parties having prizes awarded to them are particularly requested to apply for them before leaving Halifax, or leave a written order with some person to receive them, stating the articles for which prizes are claimed and the amount of same.

All persons to whom a prize has been awarded, and who did not receive the same as above, must apply to the Secretary for payment thereof in writing before the 30th November of this year, otherwise such prize will be forfeited.

JUDGES AND JUDGING.

The Judges will be appointed by the Directors previous to the Exhibition, and will receive a circular informing them of the fact and when to report at the office of the Secretary.

No person will be allowed to act as Judge who is in any way interested in the animals or articles to be examined.

It is particularly requested that Judges will not enter into arguments with exhibitors as to the merits of their exhibits, and on no account are they to give reasons for their awards.

It is desired that all the Judges of each class go together to hand in their report, instead of sending it by one of their number, and to remain together until their book has been examined by the Secretary, in order that errors or doubts may more promptly and easily be made right.

Judges will please sign and hand their awards to the Secretary as soon as possible, and make any more extended reports they desire to make afterwards.

The Judges are particularly requested not to leave the grounds until they ascertain from the Secretary whether there are any protests against the awards in the classes they have judged.

In the absence of competition in any section, or if the stock or articles exhibited are of inferior quality, the Judges will award only such premiums as they think the animal or article deserves. They will exercise their discretion as to awarding first, second or any premium.

It does not follow because a prize is offered for any particular animal or article that it must be awarded unless there is proper competition, or unless the exhibit is really of sufficient merit to warrant the award being made. Judges are particularly requested to note this fact.

In addition to the stated premiums offered, the Judges may also distinguish such animals or articles as they consider deserving of notice, but which have not received prizes by tickets with the words "HIGHLY COMMENDED" upon them. These tickets will not entitle the holder to any money payment.

No award of a money prize not offered in the list will be paid

WHEN GOING HOME,

Don't forget to take a 3-pound Tin of

Murray's CELEBRATED TEA with you.

It will only cost \$1.00,

And will prove the best investment you ever make.

F. M. MURRAY,

83 Barrington Street.

W. & C. SILVER

Keep the Largest Stock of

CARPETS & FLOOR OIL CLOTHS

In the Maritime Provinces.

Manufacture Perfect Fitting Men's Clothing & Juvenile Suits.

**Show an Immense Stock of
General Dry Goods,**

In all Branches. Unequaled in value.

W. & C. SILVER,

WHOLESALE AND RETAIL,

Corner of George and Hollis Streets, Halifax, N. S.

by the
I
Judg
overl
A
withi
appea
prote
T
strong
N
award
N
being
of ani
A
infrac
A
discha
tempt
shall f
cularly
U
prepar
been i
prizes

If
witho
discret
by the
premiu
W
case su
any po
Ex
and fit
cancel
TH
all sign
be nece
Ex
or the
mended

The
ground

Each award must be written in a plain careful manner opposite the number of the entry by the Judges in the book handed them by the Secretary.

Exhibitors can ascertain from the Superintendent of the several departments when the Judges will examine their exhibits. No complaint based upon the statement that Judges overlooked animals or articles will therefore be entertained by the Directors.

Any exhibitor lodging a protest must make it in writing, and deliver it to the Secretary within three hours after cause of protest. It must state plainly the cause of complaint or appeal, and must be accompanied by a deposit of \$1, which sum shall be forfeited if said protest is not sustained.

The Directors, however, earnestly hope exhibitors will not enter protests without the strongest grounds. Protests of a frivolous nature cause much annoyance and unpleasantness.

No animal or article exhibited shall have about it any price, colors, or cards, until the awards have been made in their respective classes.

No person will be allowed in the Horse Ring during the time Horses and Cattle are being judged, except Judges, Directors, Members of the Press, Grooms, or persons in charge of animals.

All prize cards affixed by the Judges must be displayed during the Exhibition. Any infraction of this rule will incur forfeiture of premiums awarded.

Any person who shall attempt to interfere with or influence the Judges while in the discharge of their duty, or who shall at any time on the Exhibition grounds use any contemptuous or abusive language to any Judge in consequence of any award made by him, shall forfeit his right to all premiums which have been awarded to him. Judges are particularly requested to immediately report any breach of this rule.

Upon discovery of any fraud, deception or dishonest practise or representation in the preparation or ownership of an animal or article exhibited, which may have affected or been intended to affect the decision of the Judges, the Directors have power to withhold all prizes awarded, and may also publish names of such persons should they see fit.

MISCELLANEOUS.

If through ignorance of the regulations any person shall bring things to the Exhibition without having entered the same in proper manner at the proper time, they may, in the discretion of the Directors, be allowed to place the same upon the grounds so as to be seen by the public. They should not however be classified nor examined by the Judges, and no premium shall be awarded.

When space has been allotted to any exhibitor the Directors reserve the right in case such exhibitor fails to make a creditable display to declare the space so allotted, or any portion thereof, forfeited.

Exhibitors must arrange their exhibits in as neat and attractive a manner as possible, and fit up the space allotted them in a proper manner, in default of which the Directors may cancel their entries.

The Directors reserve the right to prescribe the dimensions and regulate the position of all signs and generally to direct the management of articles on exhibition, so far as may be necessary to secure harmony and an attractive appearance.

Exhibitors will not be allowed to distribute about the grounds or buildings hand-bills or other advertisements that may cause a nuisance. Neat cards for this purpose are recommended, as they are more likely to be kept by visitors and not thrown upon the ground.

FIRE AND POLICE PROTECTION.

The most thorough arrangements possible have been made to guard against fire. The grounds are connected by telephone with the different Fire Halls, and with the precaution

GRACE & GASTONGUAY,

(Successors to P. O'MULLIN & Co.)

Commission Merchants,

IMPORTERS AND WHOLESALE DEALERS IN BRANDIES,
WINES, &c., &c.

75 Upper Water Street,

HALIFAX, N. S.

Bonded Warehouse: TOBIN'S WHARF.

THE
Equitable
LIFE ASSURANCE
SOCIETY

OF THE UNITED STATES.

JANUARY 1, 1891.

ASSETS... \$119,243,744

Liabilities, 4%, 95,503,297

SURPLUS... \$23,740,447

INCOME... \$35,036,683

New Business } 203,826,107
written in 1890, }

Assurance } 720,662,473
in force..... }

HENRY B. HYDE, President.
JAMES W. ALEXANDER, Vice-Prest.
EDWARDS & FIELDING, Managers,
HALIFAX, N. S.

JAMES ROUE,

— MANUFACTURER OF —

Ginger Ale, Lemonade, Soda Water, &c.

For Full Particulars, Address P. O. Box 406.

WOOD'S WHARF, : : HALIFAX, N. S.

taken it is belived the danger of fire is very remote. Exhibitors desiring insurance must give the matter their personal attention.

An ample police force will be on duty day and night. Exhibitors are however expected to exercise constant supervision over their articles on exhibition, because the Directors will not be responsible for loss or damage by theft, fire, or any other cause.

Small and valuable articles should be exhibited in show cases which can be securely locked.

INQUIRIES.

All information concerning the Exhibition and its arrangements may be obtained by addressing the Secretary at Halifax. During the Exhibition inquiries may be made on the premises; of the Directors, their officers and servants, who, when applied to, will either supply the information sought, or refer the questioner to the proper officer.

PRESS.

The Press Room is situated opposite the Secretary's office in the main building, and will be under the supervision of a Committee.

Members of the Press are cordially invited to the Exhibition. Ample accommodation will be provided, and all necessary information promptly supplied.

Editors are requested to notify the Secretary, two or three weeks previous to the Exhibition, of the names of representatives they will have on duty, in order that tickets may be forwarded.

TELEGRAPH AND POST OFFICE.

The Telegraph Companies have offices upon the grounds, and there is a Post office at which mails will be received and despatched daily. The buildings are also connected by telephone with the City of Halifax and other principal towns throughout the Province of Nova Scotia.

VISITORS.

Visitors may feel assured of finding on the grounds everything necessary to the convenience and comfort of all during the entire day. An ample restaurant, managed by an experienced caterer—under the supervision of the Directors as to prices and quality of food—will serve meals and refreshments, during the hours the Exhibition will be open, at reasonable rates. The hotels of the city, ample for any occasion, will adhere to their regular rates, and the citizens will co-operate with the Directors in every practicable manner in contributing to the pleasure of visitors.

HOW TO REACH THE GROUNDS.

The grounds are situated in a central position beside the Public Gardens on the line of Street Railway. Passengers from Railroad Depot, and also from principal parts of the city, can reach the grounds by Street Car every seven minutes; fare, five cents.

The licensed hackney carriages of the city are handsome and comfortable vehicles, while the tariff is extremely reasonable.

The following are the rate of

FARES.

For each person for any distance	up to one mile	25 cents
“ “ “	one mile and a half	30 “
“ “ “	two miles	40 “
“ “ “	two and a half miles	45 “
“ “ “	three miles	50 “

AY,

DIES,

Ω.

JAMES W. ALEXANDER, Vice-Prest.
EDWARDS & FIELDING, Managers,
HALIFAX, N. S.

&c.

Ω.

E. MAXWELL & SON

—MAKERS OF—

Ladies' Sealette Sacques,

Dolmans, Cloth Sacques, Redingotes, Suits, Silk Garments, etc.

Gentlemen's Clothing,

For which purpose we keep a large stock of English,
Scotch and Canadian Cloths.

SEE OUR HANDSOME SEALETTE.

69 GRANVILLE STREET • • • • HALIFAX, N. S.

TWO DOORS SOUTH Y. M. C. A.



ST. JAMES' BILLIARD HALL.

English and American Billiard and Pool Tables,

American Bowling Alleys and Shooting Gallery.

ENGLISH ALES AND PORTER ON DRAUGHT, CHOICEST WINES,
FINEST HAVANA CIGARS.

Lager Beer on Draught. Johnson's Flood Beef on Draught.

RICHARD SHEPEARD, - - - 117 Hollis Street.

One half of the above rates to be paid if returning in the same carriage, for every fifteen minutes after the first fifteen minutes 15 cents extra is allowed.

For all hacks or cabs hired by the hour the charge shall be—

For a one horse carriage per hour\$0.75
 For a two horse carriage per hour 1.00

And a like proportion for every fraction of an hour. Persons engaging a licensed hack or cab by the hour to state the same at the time of hiring.

To or from any steamer or passenger vessel, to or from any hotel or dwelling-house to any stage office, railway station or other place with $\frac{1}{2}$ ewt. of luggage 50c.

Above with every additional half ewt. of luggage 10c.

And in like proportion for all other distances and additional luggage.

Children under one year old free ; over one year and under twelve half fare.

For employment in the night time between 12 o'clock midnight and 6 o'clock a. m., in summer, and 12 o'clock midnight and 7 a. m., in the winter, the fare shall be as parties may agree, not however to exceed double fare.

A. M. BELL,

Wholesale * Hardware.

I aim to supply dealers with the best value in

Domestic, American, British and German

—•❧ HARDWARE, ❧•—

and keep constantly in stock a large assortment of these goods.

I HAVE THE EXCLUSIVE AGENCY FOR

*Towers' Oil Clothes, Woolsey's Copper Paint,
 Pratt's Liquid Driers, Wood's Ice Tools.*

Enquiries for prices, etc., solicited.

A. M. BELL, - - 67 & 69 Upper Water St.,

HALIFAX, N. S.



Moir, Son & Co.

Manufacturers of
Cakes, Biscuits, Confectionery.

FINE CANDIES A SPECIALTY.

FRUIT SYRUPS. DESSICATED COCOANUT.

Wood and Paper Boxes.

Salesrooms, Retail and Wholesale :

ARGYLE ST., CORNER OF DUKE,

HALIFAX, N. S.

M
W. C.
gow, C

Sp
of the
Th
St
Al
hours
can be
Al
Should
In
and th
In
proper
must b
unless
that th
No

NOVA SCOTIA
 PROVINCIAL FAIR

September 29th to October 2nd, 1891.

PRIZE LIST.

Live Stock Department.

HORSES.

COMMITTEE OF MANAGEMENT.

Messrs. B. W. Chipman, Chairman ; Wm. Duffus, Michael Wallace, James E. Chipman, W. C. Moir, Robert H. Edwards, George W. Forrest, M.P.P., James A. Fraser, New Glasgow, Caleb R. Bill, Kings Co., Adam C. Bell, New Glasgow, Alex. Wilson, Pugwash.

Special rules governing the exhibit of horses in the horse ring will be issued at the time of the Exhibition, and all exhibitors will be required to conform to the same.

The age of horses will be calculated to the first of January, 1891.

Stalls will not be allotted until horses arrive on the grounds.

All stall doors must be left open so that visitors can inspect the horses between the hours of 9 a. m. and 6 p. m. All stalls must be cleaned out before 7 a. m., so that refuse can be cleared away before arrival of visitors.

All animals competing for prizes must be entered in the name of the *bona fide* owners. Should doubts arise the Judges may require affidavits of ownership from the exhibitor.

In making entries, the owner's name and address in full the *name of animal* (if named) and the age must be given.

In the classes for Blood, Standard Bred and other pure bred Horses, full pedigrees properly certified must accompany the entry, or the number of registration in the Stud Book must be given on the entry form. Animals will not be allowed to compete as pure bred unless they possess regular Stud Book pedigrees or satisfactory evidence be produced that they are directly descended from registered stock.

No horse will be allowed to compete in more than one class or section.

W. H. THORNE & CO.,
Metals and General Hardware,
MARKET SQUARE,
ST. JOHN, N. B.

WE HAVE THE GREATEST VARIETY OF

HARDWARE

IN THE MARITIME PROVINCES, AND MAKE A SPECIALTY OF

Glass and Painters' Supplies.

WE KEEP IN STOCK THE FOLLOWING KINDS OF GLASS:

Polished Plate,
1-8 Ribbed,
3-16 Ribbed,
Fluted,
Mirrors,

Diamond Quarry.
Red, Blue and Yellow
Diamond,
16, 21, 26 oz. Ground.
16, 26 oz. Common,

16, 21, 26oz. Muslin,
Patent Quilted,
Patent Morocco (3 shades),
Cathedral,
Red, Blue, Yellow & Green.

AGENTS FOR

Carson's Anti-Corrosion Paint,

Which is the most durable made for outside use. It is patronized by HER MAJESTY THE QUEEN, the BRITISH GOVERNMENT, and everyone who wants the best.

Agents also for **THE HAZARD SPORTING AND MINING POWDERS**, which are the best, and are used by all the leading sportsmen. The brands are: **Indian Rifle, Sea Shooting, Trap, Duck Shooting,** and **Electric.**

We also keep a full line of all kinds of **White Leads** and **Colors, Mill Supplies, Belting** and **Oils, Fishing Supplies, Cordage, Building Materials, Cements, Plaster,** and an endless variety of Small Hardware.

broo

allow
anim
harm

the J

the p
awar

I
on de
ing.
retur

A
K

SEC.

1. St

2.

3.

4. Ye

5. Fi

6.

7.

8. B

SEC.

1. Sta

2.

3.

4. Ye

5. Fil

6. "

7. "

8. B

SEC.

1. St

2.

3.

No horse will be allowed a premium unless sound, except in the case of stallions and brood mares injured by accidents which do not lessen their usefulness.

Horses must be shown uncovered, and in such manner as the Judges may require or allow; and if exhibitors refuse to submit to the proper requirements of the Judges their animals will be ruled out, but exhibitors will have the privilege of showing their horses in harness to bridle, or under saddle, as they may prefer.

All horses competing for prizes in this department must be brought out for inspection of the Judges, or for exhibition, whenever called upon by the official appointed for that duty.

Non-compliance with any of these rules, or the general rules of the Commissioners, on the part of any exhibitor or his employee, shall incur the forfeiture of any premium awarded.

Exhibitors who may desire to take their horse home at night will be allowed to do so on depositing \$1 with Secretary as a guarantee for the return of the animal the next morning. The amount deposited will be forfeited to the Commissioners if the horse is not returned by 9 a. m. next day.

All horses competing for prizes must be on the grounds by 8 a. m. on 29th September. Entries close August the 29th.

Class 1.—Thoroughbred Horses.

SEC.		1st.	2nd.	3rd.
1.	Stallion, 4 years old and upwards,	\$35	\$25	\$10
2.	“ 3 “	25	15	8
3.	“ 2 “	15	10	5
4.	Yearling Colt (entire),	10	6	4
5.	Filly, 3 years old,	15	10	5
6.	“ 2 “	12	8	5
7.	“ 1 “	8	6	4
8.	Brood Mare, with Foal by her side,	20	12	6

Class 2.—Standard Bred Horses.

SEC.		1st.	2nd.	3rd.
1.	Stallion, 4 years old and upwards,	\$35	\$25	\$10
2.	“ 3 “	25	15	8
3.	“ 2 “	15	10	5
4.	Yearling Colt, (entire),	10	6	4
5.	Filly, 3 years old,	15	10	5
6.	“ 2 “	12	8	5
7.	“ 1 “	8	6	4
8.	Brood Mare, with Foal by her side,	20	12	8

Class 3.—Carriage and Saddle Horses.

SEC.		1st.	2nd.	3rd.
1.	Stallion, 4 years old and upwards,	\$20	\$10	\$ 5
2.	“ 3 “	15	8	4
3.	“ 2 “	12	7	3

97 **Barrington Street.** 101

TO
HALIFAX, N. S.

MAHON BROS., DRY GOODS.

IMPORTERS

**Special Lines Silks, Satins, Kid Gloves,
Mantles, Ulsters, &c., &c.**

Ladies', Misses' and Children's Under Clothing.

— IN STOCK AND MADE TO ORDER —

INFANTS' OUTFITS.

The Largest Retail Dry Goods House in the City.

ESTABLISHED 1868.

MILLER BROTHERS,

— MANUFACTURERS' AGENTS FOR THE BEST —



F&C. PALMER DE LONDON ENGL.

Pianos, Organs,

— AND —

Sewing Machines.

**Pianos and Organs Repaired and Tuned.
Sewing Machines Repaired.**

116 and 118 Granville Street, HALIFAX, N. S.

Telephone 738.

SEC.

4. G
- 5.
- 6.
7. B
8. P
9. S
10. L
11. G

SEC.

1. Sta
- 2.
- 3.
4. Ye
5. Fil
6. "
7. "
8. Bro

SEC.

1. Sta
- 2.
- 3.
4. Ye
5. Fil
6. "
7. "
8. Bro

SEC.

1. Sta
- 2.
- 3.
4. Ye
5. Fil
6. "
7. "
8. Bro

SEC.		1st.	2nd.	3rd.
4.	Gelding or Filly, 3 years old and upwards.	20	10	5
5.	" " 2 "	15	8	5
6.	" " 1 "	11	7	4
7.	Brood Mare, with Foal by her side,	20	12	6
8.	Pair Carriage Horses (shown in carriage).	30	20	10
9.	Single Carriage Horse, " "	20	15	10
10.	Ladies' Saddle Horse (Gelding or Mare),	10	5	—
11.	Gentlemen's " " "	10	5	—

Class 4.—Clydesdales.

SEC.		1st.	2nd.	3rd.
1.	Stallion, 4 years old and upwards,	\$35	\$25	\$10
2.	" 3 "	25	15	8
3.	" 2 "	15	10	5
4.	Yearling Colt,	10	6	4
5.	Filly, 3 years old,	15	10	5
6.	" 2 "	12	8	5
7.	" 1 year old,	8	6	4
8.	Brood Mare, with Foal by her side,	20	12	6

Class 5.—Percherons.

SEC.		1st.	2nd.	3rd.
1.	Stallion, 4 years old and upwards,	\$35	\$25	\$10
2.	" 3 "	25	15	8
3.	" 2 "	15	10	5
4.	Yearling Colt,	10	6	4
5.	Filly, 3 years old,	15	10	5
6.	" 2 "	12	8	5
7.	" 1 year old,	8	6	4
8.	Brood Mare, with Foal by her side.	20	12	6

Class 6.—English Shire Horses.

SEC.		1st.	2nd.	3rd.
1.	Stallion, 4 years old and upwards,	\$35	\$25	\$10
2.	" 3 years old,	25	15	8
3.	" 2 "	15	10	5
4.	Yearling Colt (entire),	10	6	4
5.	Filly, 3 years old,	15	10	5
6.	" 2 "	12	8	5
7.	" 1 "	8	6	4
8.	Brood Mare, with Foal by her side,	20	12	6

CUNNINGHAM & CURREN,

COMMISSION MERCHANTS,

— PROPRIETORS OF —

“Crown” Rollers Mills, Halifax — Victoria Mills, Truro.

CAPACITY, 700 BARRELS PER DAY.

Our CORN MEALS “Gold Dust” and “Crown” brands are manufactured from selected Western and Southern Yellow Corn, and are thoroughly kiln dried.

WE ARE AGENTS FOR
ARMOUR & CO., Chicago.
REINACHS, NEPHEW & CO.
 (Teas), London.
EDWARD BUCHANAN, Leith.
TOLSON, SCOTT & CO.,
 Highgate.
H. HOLLINGSHEAD, Dutton.

VISITORS TO THE EXHIBITION

Are invited to call and inspect our stock of

PATENT FLOURS.

BRANDS:—“Hungarian Patent,” (Manitoba); “Gilt Edge,” “People’s,”
 “Dandy,” “Matchless,” “Sunbeam,” “White Cloud,” “Tuberosa,”
 “White Eagle,” and others.

Tobin’s Wharf, ---North of Ordnance Yard,

HALIFAX.

SEC.
 1. S
 2.
 3.
 4. Y
 5. I
 6.
 7.
 8. B

SEC.
 1. S
 2.
 3.
 4. Y
 5. F
 6.
 7.
 8. B

SEC.
 1. St
 2.
 3.
 4. Ye
 5. F
 6.
 7.
 8. Br

Class
 SEC.
 1. Sta
 2.
 3.
 4. Bro
 5. Ma
 6.
 7.
 8. Pair

Class 7.—Suffolk Punch Horses.

SEC.		1st.	2nd.	3rd.
1.	Stallion, 4 years old and upwards,	\$35	\$25	\$10
2.	“ 3 years old,	25	15	8
3.	“ 2 “	15	10	5
4.	Yearling Colt (entire),	10	6	4
5.	Filly, 3 years old,	15	10	5
6.	“ 2 “	12	8	5
7.	“ 1 year old,	8	6	4
8.	Brood Mare, with Foal by her side,	20	12	6

Class 8.—Hackney Horses.

SEC.		1st.	2nd.	3rd.
1.	Stallion, 4 years old and upwards,	\$35	\$25	\$10
2.	“ 3 years old,	25	15	8
3.	“ 2 “	15	10	5
4.	Yearling Colt (entire),	10	6	4
5.	Filly, 3 years old,	15	10	5
6.	“ 2 “	12	8	5
7.	“ 1 “	8	6	4
8.	Brood Mare with Foal by her side,	20	12	6

Class 9.—Cleveland Bay Horses.

SEC.		1st.	2nd.	3rd.
1.	Stallion, 4 years old and upward,	35	25	10
2.	“ 3 “	25	15	8
3.	“ 2 “	15	10	5
4.	Yearling Colt, (entire)	10	6	4
5.	Filly, 3 years old	15	10	5
6.	“ 2 “	12	8	5
7.	“ 1 “	8	6	4
8.	Brood Mare with Foal by her side,	20	12	6

Class 10.—Agricultural and Draft Horses (other than pure breeds).

SEC.		1st.	2nd.	3rd.
1.	Stallion, 4 years old and upward,	\$20	\$10	\$5
2.	“ 3 “	15	8	4
3.	“ 2 “	12	7	3
4.	Brood Mare with Foal by her side,	20	12	6
5.	Mare or Gelding, 3 years old,	12	10	8
6.	“ “ 2 “	10	8	6
7.	“ “ 1 “	8	6	4
8.	Pair Heavy Draft Horses,	30	20	10

CARRIAGE STOCK, HARDWARE, TEA, ETC.

ALSO, FISHING SUPPLIES.

A. J. GRANT & CO.

No. 65 Upper Water Street,

Head of O'Connor's Wharf,

Halifax, Nova Scotia.

DOWNIE & LARSEN,

Successors to A. A. Bliss & Co.

BOOTS & SHOES,

166 GRANVILLE ST.,

HALIFAX, N. S.

Telephone 309.

Smith & Power,

35 and 37 George Street,

RETAIL DRY GOODS.

* OUR * SPECIALTIES : DRESS GOODS, MANTLES,
GOSSAMERS, UMBRELLAS,
LADIES' WHITE UNDERWEAR,
Yatise, D. & A. and A. A. Elegant Corsets.

Send Samples on application.

HALIFAX MARBLE WORKS,

73 AND 75 BARRINGTON STREET.

WILLIAM BISHOP,

CONTRACTOR FOR CUT STONE FOR BUILDINGS.

— MANUFACTURER OF —

Monuments in Granite and Marble, Mural Tablets, Church Fonts, and
CEMETERY WORK OF ALL KINDS.

Orders from the Country promptly attended to.

Designs furnished on application.

Class 11.—Shetland Ponies.

SEC.		1st.	2nd.
1.	Stallion, any age,	\$5	\$3
2.	Mare, "	5	3

Class 12.—Tandems.

SEC.		1st.	2nd.
1.	Tandem of Horses and turn-out, the property of the exhibitor, ..	\$10	\$5
2.	Tandem of Ponies and turn-out, the property of the exhibitor, ..	4	2

NOTE.—In awarding these prizes the Judges will take account of the style and skill in handling of the drivers.

Class 13.—Licensed Horses.

SEC.		1st.	2nd.	3rd.
1.	Pair Horses and Hack, owned and driven by a licensed Hackman,	\$12	\$9	\$6
2.	Horse and Cart, owned and driven by a licensed Truckman, ..	9	7	5

WEATHERBEE & CO.

MANUFACTURERS AND JOBBERS OF

BOOTS & SHOES.

Sole Manufacturers of the Celebrated Fish Brand Fishing Boot.

Factory Opposite Elevator.

TELEPHONE 486.

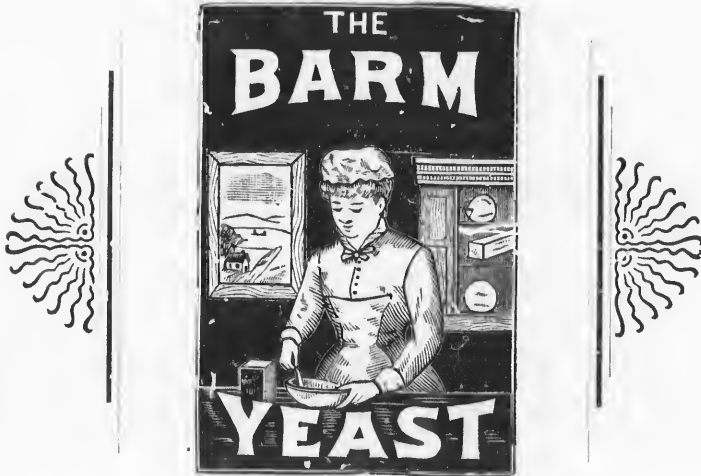
Buyers are requested to examine Samples before purchasing elsewhere.

Do you want
The First Prize?

—WE MEAN—

FOR GOOD BREAD.

IF YOU DO, USE



It is the Quickest and Strongest
 Yeast made, and has given
satisfaction wherever used.

For sale by all Grocers.

WHOLESALE ONLY,)
 BY) **JOHN PETERS & CO.,**
 47 Water Street, Halifax, N. S. Sole Agents.

man
 (Ant
 (Par
 anim
 given
 at th
 calf.
 the e
 the C
 when
 A
 not b
 S
 C
 Sec.
 1. P
 2.
 3.
 4. C
 5. C
 6.
 7. I
 8.
 9.
 10. H

CATTLE.

COMMITTEE.

Prof. Lawson, Chairman; Messrs. W. J. Veith, G. P. Henry, George McLellan, Alderman Sanford, T. R. Black (Amherst), Harry Townsend (New Glasgow), C. C. Gregory (Antigonish), Jacob S. Hart (Whycoemagh), Charles E. Brown (Yarmouth), W. E. Starrett (Paradise), Israel Longworth (Truro).

The ages of Cattle will be calculated to the 1st September, 1891.

In making entries, the owner's name and address in full, also the exact age of the animal, with its name and registration number, and also the name of dam and sire, must be given.

In all classes of Thoroughbred Cattle, exhibitors, if required, must produce pedigrees at the time of exhibition. All animals must be registered, or eligible for registration.

Cows must be giving milk at the time of the exhibition, or be evidently well gone in calf. All Cows exhibited in the Dairy Class must be milked not later than seven o'clock on the evening previous to the day for judging.

No animals can compete in more than one class or section, except for Herd Prizes, in the Class to which they belong.

Animals will be shown in the ring, and Exhibitors must be ready to bring them out when called for.

Animals must be exhibited in the section set apart for them. Younger animals will not be allowed to show in sections intended for those of a stated age.

See also General Rules in front of Prize List.

Cattle must be on the grounds by 6 p. m. Monday, 28th September.

Class 14.—Galloways.

SEC.		1st.	2nd.	3rd.
1.	Bull, 3 years old and upwards,	\$25	\$15	\$10
2.	“ 2 “	15	10	8
3.	“ 1 “	12	8	5
4.	Calf under 1 year	10	7	4
5.	Cow, 3 years old and upwards.... .. .	25	15	10
6.	“ 2 “	15	10	8
7.	Heifer, 2 years old	15	10	8
8.	“ 1 “	12	8	5
9.	“ Calf under 1 year,	10	7	4
10.	HERD, to consist of 1 bull and 5 females, 4 of which must be in milk or in calf. No animal in herd to be under 1 year. Prizes will not be awarded unless the Judges deem herd worthy	50	40	

e?

D.



gest

CO.,
Agents.

INSURE AGAINST **FIRE** IN THAT STRONG HOME COMPANY,

The
Eastern Assurance Company,
 HEAD OFFICE, HALIFAX, N. S.--60 BEDFORD ROW.

CAPITAL,---\$1,000,000.

AGENCIES AT ALL PRINCIPAL POINTS THROUGHOUT CANADA.

BOARD OF DIRECTORS:

JOHN DOULL, President Bank of Nova Scotia, Halifax, N. S.
 Hon. H. H. FULLER, M. L. C., Director Merchants' Bank of Halifax, Halifax, N. S.
 ADAM BURNS, Director Bank of Nova Scotia, Halifax, N. S.
 J. F. STAIRS, M. E., Director Nova Scotia Sugar Refinery, Ltd., Halifax, N. S.
 H. McD. HENRY, Q. C., (Henry, Ritchie & Henry), Halifax, N. S.
 J. W. ALLISON, Director People's Bank of Halifax, Halifax, N. S.
 SIMEON JONES, Director Bank of New Brunswick (ex-Mayor of City of St. John), St. John, N. B.
 ALLEN HALEY, Manager Marine Insurance Co., Windsor, N. S.
 Hon. L. E. BAKER, President Yarmouth Steamship Co., Yarmouth, N. S.
 JAMES EISENHART, West India Merchant, Lunenburg, N. S.
 OLIVER C. CUMMINGS (of Wm. Cummings & Sons), Truro, N. S.
 JAMES D. MCGREGOR, Director Steel Co. of Canada, New Glasgow, N. S.
 CHARLES D. CORY, Manager Eastern Assurance Co., Halifax, N. S.

OFFICERS:

JOHN DOULL President, | SIMEON JONES..... 2nd Vice-President.
 Hon. H. H. FULLER 1st Vice-President. | CHARLES D. CORY...Managing Director.
 D. C. EDWARDS..... Secretary.

POWER & CO.,

289, 291 Barrington, and 132, 134 Upper Water Streets,

HALIFAX, N. S.

STEAM AND HOT WATER ENGINEERS,

Machinists, Coppersmiths, Plumbers, Gas Fitters, &c.

Manufacturers of Copper, Brass, Lead and Iron Goods for Railways, Steamships, Light-houses, Factories, Tanneries, Etc.

Importers of Wrought and Cast Iron Pipe and Fittings, Engineers' and Miners' Supplies.

Warren's Felt Roofing Materials applied and for sale.

WM. TAYLOR & CO.

WHOLESALE AND RETAIL,

**Boots, Shoes, Slippers, Rubbers,
 Felt Goods, Larrigans, Etc.,**

—AT THE—

PALACE BOOT AND SHOE STORE,

156 Granville Street, Halifax, N. S.

SEC.
 1.
 2.
 3.
 4.
 5.
 6.
 7.
 8.
 9.
 10.

SEC.
 1. F.
 2.
 3.
 4.
 5. C.
 6.
 7. F.
 8.
 9.
 10. F.

SEC.
 1. B.
 2.
 3.
 4.
 5. C.
 6.

Class 15.—Durhams or Shorthorns.

SEC.		1st.	2nd.	3rd.	4th.
1.	Bull, 3 years old and upwards,	\$30	\$20	\$15	\$10
2.	“ 2 years old,	20	15	10	6
3.	“ 1 year old,	15	10	8	4
4.	“ Calf, under 1 year,	10	8	4	3
5.	Cow, 3 years old and upwards,	30	20	15	10
6.	“ 2 years old,	20	15	10	6
7.	Heifer, 2 years old,	20	15	10	6
8.	“ 1 “	15	10	8	4
9.	“ Calf, under 1 year,	10	8	4	3.
10.	HERD, to consist of one bull and five females, four of which must be in milk or in calf. No animal in herd to be under one year. Prizes will not be awarded unless the Judges deem herds worthy,	50	40

Class 16.—Ayrshires.

SEC.		1st.	2nd.	3rd.
1.	Bull, 3 years old and upwards,	\$25	\$15	\$10
2.	“ 2 years old,	15	10	8
3.	“ 1 year old	12	8	5
4.	“ Calf, under 1 year,	10	7	4
5.	Cow, 3 years old and upwards,	25	15	10
6.	“ 2 years old,	15	10	8
7.	Heifer, 2 years old,	15	10	8
8.	“ 1 year old,	12	8	5
9.	“ Calf, under 1 year,	10	7	4
10.	HERD, to consist of one bull and five females, four of which must be in milk or in calf. No animal in herd to be under one year. Prizes will not be awarded unless the Judges deem herds worthy,	50	40	..

Class 17.—Devons.

SEC.		1st.	2nd.	3rd.
1.	Bull, 3 years old and upwards,	\$25	\$15	\$10
2.	“ 2 years old,	15	10	8
3.	“ 1 year old,	12	8	5
4.	“ Calf, under 1 year,	10	7	4
5.	Cow, 3 years old and upwards,	25	15	10
6.	“ 2 years old,	15	10	8.

ARMY AND NAVY DEPOT.

ESTABLISHED  1832.**JAMES SCOTT & CO.,**

—WHOLESALE AND RETAIL—

GROCERS AND WINE MERCHANTS,
117 and 118 Granville Street, Halifax, N. S.**WESTERN ASSURANCE COMPANY OF TORONTO.**

FIRE AND MARINE. CAPITAL AND ASSETS, \$2,000,000.

A. M. SMITH, President. J. J. KENNY, Managing Director. C. C. FOSTER, Sec'y.

All kinds of Property insured at lowest rates, and Losses Promptly Paid.

G. M. GREER, General Agent, 134 Hollis Street, Halifax.

—AGENT ALSO FOR—

MANCHESTER FIRE INS. CO. of England. FIRE INS. ASSOCIATION of England.

CONNECTICUT FIRE INSURANCE CO. of Hartford.

WM. NOTMAN,

PHOTOGRAPHER TO THE QUEEN,

39 GEORGE STREET, HALIFAX, N. S.

PHOTOGRAPHY in all its branches. Outdoor work attended to at short notice. Enlargements in Oil, Water Color or Ink. Particular attention is called to our permanent BROMIDE CRAYON PORTRAITS. Developing and Printing done for Amateurs.

W. H. DONOVAN,

—MANUFACTURER OF—

Ginger Ale, Champagne Cider,

LEMONADE, CREAM SODA, ETC., ETC.,

22 Granville Street, - - - HALIFAX, N. S.

C. G. SCHULZE,

—PRACTICAL—

Watch and Chronometer Maker,Importer of Fine Gold and Silver Watches, Clocks, Jewelry
and Optical Goods.**SPECIAL ATTENTION GIVEN TO REPAIRING FINE WATCHES.**

Chronometers for Sale and Repaired. Chronometers Rated by Transit Observations.

171 BARRINGTON STREET, HALIFAX, N. S.

(MANSION HOUSE.)

SEC.

7.

8.

9.

10.

SEC.

1.

2.

3.

4.

5.

6.

7.

8.

9.

10.

SEC.

1. B

2.

3.

4.

5. C

6.

7. H

8.

9.

10. H

SEC.		1st.	2nd.	3rd.
7.	Heifer, 2 years old,	15	10	8
8.	" 1 year old,	12	8	5
9.	" Calf, under 1 year,	10	7	4
10.	HERD, to consist of one bull and five females, four of which must be in milk or in calf. No animal in herd to be under one year. Prizes will not be awarded unless the Judges deem herds worthy,	50	40	..

Class 18.—Jerseys.

SEC.		1st.	2nd.	3rd.
1.	Bull, 3 years old and upwards	\$25	\$15	\$10
2.	" 2 "	15	10	8
3.	" 1 "	12	8	5
4.	" Calf under 1 year,	10	7	4
5.	Cow, 3 years old and upwards	25	15	10
6.	" 2 "	15	10	8
7.	Heifer, 2 years old,	15	10	8
8.	" 1 "	12	8	5
9.	" Calf under 1 year,	10	7	4
10.	HERD, to consist of one bull and five females, four of which must be in milk or in calf. No animal in herd to be under one year. Prizes will not be awarded unless the Judges deem herds worthy,	50	40	

Class 19.—Guernseys.

SEC.		1st.	2nd.	3rd.
1.	Bull, 3 years old and upwards,	\$25	\$15	\$10
2.	" 2 "	15	10	8
3.	" 1 "	12	8	5
4.	" Calf, under 1 year,	10	7	4
5.	Cow, 3 years old and upwards,	25	15	10
6.	" 2 "	15	10	8
7.	Heifer, 2 years old,	15	10	8
8.	" 1 "	12	8	5
9.	" Calf, under 1 year,	10	7	4
10.	HERD, to consist of one male and five females, four of which must be in milk or calf. No animal to be under one year. Prizes will not be awarded unless the Judges deem herds worthy,	50	40	



LEITH HOUSE.

ESTABLISHED 1818.

KELLEY & GLASSEY,

(SUCCESSORS TO ALEX. McLEOD & Co.,)

Wine & Spirit

MERCHANTS,

HALIFAX, N. S.



REDDEN BROS.

Druggists.

Charlottetown, P. E. I.

(The Commercial News Depot.)

Opp. Post Office.

PURE DRUGS, PURE CHEMICALS,
TOILET REQUISITES, FANCY GOODS.

Havana Cigars a Specialty.

Dispensing personally attended to Day and Night.

CHAMPAGNES, WINES, ALES AND LIQUORS,

For Medicinal Use, of the Purest Grades, always in stock.

SR
1
2
3
4
5
6
7
8
9
10.

SEC
1.
2.
3.
4.
5.
6.
7.
8.
9.
10.

SEC.
1.
2.
3.
4.
5.
6.

Class 20.—Herefords.

SEC.		1st.	2nd.	3rd.
1.	Bull, 3 years old and upwards,	\$25	\$15	\$10
2.	" 2 "	15	10	8
3.	" 1 "	12	7	5
4.	" Calf, under 1 year,	10	7	4
5.	Cow, 3 years old and upwards,	25	15	10
6.	" 2 "	15	10	8
7.	Heifer, 2 years old,	15	10	8
8.	" 1 "	12	8	5
9.	" Calf, under 1 year,	10	7	4
10.	HERD, to consist of one male and five females, four of which must be in milk or in calf. No animal to be under one year. Prizes will not be awarded unless the Judges deem herds worthy,	50	50	

Class 21.—Polled Suffolks, or Red Polls.

SEC.		1st.	2nd.	3rd.
1.	Bull, 4 years old and upwards, ..	\$25	\$15	\$10
2.	" 3 years old, ..	15	10	8
3.	" 2 " ..	12	8	5
4.	" Calf, under 1 year,	10	7	4
5.	Cow, 3 years old and upwards, ..	25	15	10
6.	" 2 years old, .	15	10	8
7.	Heifer, 2 years old,	15	10	8
8.	" 1 year old,	12	8	5
9.	" Calf, under 1 year,	10	7	4
10.	HERD, to consist of one male and five females, four of which must be in milk or in calf. No animal to be under one year. Prizes will not be awarded unless the Judges deem herds worthy,	50	40	..

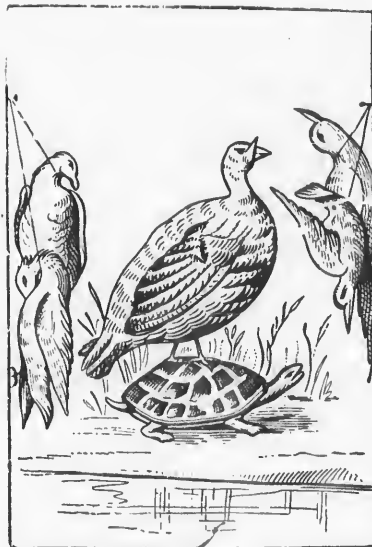
Class 22.—West Highland Cattle.

SEC.		1st.	2nd.	3rd.
1.	Bull, 4 years old and upwards, ..	\$25	\$15	\$10
2.	" 3 years old, ..	15	10	8
3.	" 2 " ..	12	8	5
4.	" Calf, under 1 year,	10	7	4
5.	Cow, 3 years old and upwards, ..	25	15	10
6.	" 2 years old, ..	15	10	8

BILL OF FARE
AT
WOOLNOUGH'S

Every Evening up to 11.30.

OYSTERS, in every style.
 GAME, when in season.
 CUTLETS OR CHOPS, various kinds.
 PORTER HOUSE STEAK.
 SIRLOIN STEAK.
 SPATCH COCK CHICKENS.
 SPATCH COCK PARTRIDGES.
 COLD ROAST BEEF;
 COLD HAM.
 COLD CORN BEEF.
 WELSH RARE BITS.
 HAM BUCKS.
 GOLDEN BUCKS.
 LOBSTER SALADS.
 PLAIN LOBSTER.



34 SALTER STREET.

WOODILL'S
 German * Baking * Powder
 AND WORM LOZENGES.

W. M. D. PEARMAN,
 HALIFAX, N. S.

PURE CREAM TARTAR.

BI CARB AND SAL SODAS.

H. H. BANKS,
 Auctioneer and Commission Agent,

PARKER MARKET BUILDING, HALIFAX, N. S.

COUNTRY PRODUCE A SPECIALTY.

CONSIGNMENTS SOLICITED.

All Orders promptly attended to. Charges Moderate.

Sec.
7.
8.
9.
10.

Sec.
1.
2.
3.
4.
5.
6.
7.
8.
9.
10.

Sec.
1. F
2.
3.
4.
5. C
6
7. H
8.
9.
10. H

SEC.		1st.	2nd.	3rd.
7.	Heifer, 2 years old,	15	10	8
8.	" 1 year old,	12	8	5
9.	" Calf, under 1 year,	10	7	4
10.	HERD, to consist of one male and five females, four of which must be in milk or in calf. No animal to be under one year. Prizes will not be awarded unless Judges deem herds worthy,	50	40	.

Class 23.—Polled Angus.

SEC.		1st	2nd.	3rd.
1.	Bull, 3 years old and upwards,	\$25	\$15	\$10
2.	" 2 "	15	10	8
3.	" 1 "	12	8	5
4.	" Calf, under 1 year,	10	7	4
5.	Cow, 3 years old and upwards,	25	15	10
6.	" 2 "	15	10	8
7.	Heifer, 2 years old,	15	10	8
8.	" 1 "	12	8	5
9.	" Calf, under 1 year,	10	7	4
10.	HERD, to consist of one male and five females, four of which must be in milk or in calf. No animal to be under one year. Prizes will not be awarded unless the Judges deem herds worthy,	50	40	.

Class 24.—Holstein.

SEC.		1st.	2nd.	3rd
1.	Bull, 3 years old and upwards,	\$25	\$15	\$10
2.	" 2 "	15	10	8
3.	" 1 "	12	8	5
4.	" Calf, under 1 year,	10	7	4
5.	Cow, 3 years old and upwards	25	15	10
6.	" 2 years old,	15	10	8
7.	Heifer, 2 years old,	15	10	8
8.	" 1 "	12	8	5
9.	" Calf, under 1 year	10	7	4
10.	HERD, to consist of one male and five females, four of which must be in milk or in calf. No animal to be under one year. Prizes will not be awarded unless the Judges deem herds worthy,	50	40	.



der

SODAS.

gent,

SOLICITED.

DAVID ROCHE, Wall Papers & Decorations,

IN ALL THE LATEST DESIGNS

— IN —
ENGLISH AND AMERICAN MANUFACTURE.

We carry the largest line of Cheap Wall Papers in the City.

COUNTRY ORDERS SOLICITED.

Nos. 236 and 238 Argyle, and 4 and 6 Jacob Sts.,
HALIFAX, N. S.

UNGAR'S STEAM LAUNDRY,

60 to 64 Granville Street, 26 to 34 Waterloo Street,
HALIFAX, N. S. ST. JOHN, N. B.

FIRST CLASS WORK & PROMPT DELIVERY.
OUT OF TOWN ORDERS ATTENDED TO.

BARNSTEAD & SUTHERLAND,

CENTRAL HOUSE,
145 and 147 BARRINGTON ST., opp. South End Grand Parade,
HALIFAX, N. S.

— IMPORTERS OF —

British and American Staple and Fancy Dry Goods.

We handle the B. & S. Corset, "The Best."

WM. L. BARNSTEAD.

J. H. SUTHERLAND.

Class 25.—Grade Dairy Cattle.

SEC.		1st.	2nd.	3rd.	4th.	5th.
1.	Cow, 4 years old and upwards,	\$15	\$12	\$10	\$8	\$5
2.	" 3 "	15	12	10	8	5
3.	" 2 "	12	10	8	6	..
4.	Heifer, 2 years old,	12	10	8	6	..
5.	" 1 "	10	8	6	4	..
6.	" Calf, under 1 year,	7	5	4	3	..

Class 26—Working Oxen.

SEC.		1st.	2nd.	3rd.
1.	Pair Working Oxen, any age. To be exhibited in yoke and tested at the discretion of the Judges	\$40	\$30	\$20

Class 27.—Fat Cattle (any breed.)

SEC.		1st.	2nd.	3rd.	4th.
1.	Fat Ox or Steer, 4 years and over,	\$20	\$15	\$10	\$..
2.	" 3 years old,	20	15	10	..
3.	" 2 "	20	15	10	..
4.	Fat Cow or Heifer, 4 years and over,	20	15	10	..
5.	" Heifer, 3 years old,	20	15	10	..
6.	" " 2 "	20	15	10	..
7.	Pair Fat Cattle of any age, neither of which are entered in other Sections,	40	30	20	10

Cattle entered in other Classes cannot be entered or shown as Fat Cattle.

*** La Salle Academy, ***
HALIFAX, N. S.

CLASSICAL * COMMERCIAL * SCIENTIFIC.

CONDUCTED BY

—The Brothers of the Christian School.—

The object of this Institution is to train up Christian gentlemen and good citizens, and, by a varied course of study, to supply the necessary preparation for all the walks of life. For particulars, apply to

BROTHER JOSEPH, Director.

JAMES C. MACKINTOSH,
BANKER, BROKER, AND FINANCIAL AGENT,
 166 Hollis Street---Halifax, N. S.

All descriptions of Banking
 and **Financial Business**

ATTENDED TO.

Loans effected. Deposits received. Bonds, Debentures and
 Stocks bought and sold. Money invested in undoubted
 securities to yield from 4 per cent. to 8 per cent.

AGENT OF THE CHEQUE BANK OF LONDON,
 STERLING CHEQUES ISSUED AND CASHED.

LOMBARD INVESTMENT COMPANY.
 GUARANTEED MORTGAGES.

Correspondence solicited.

J. C. MACKINTOSH,
 166 Hollis Street, Halifax, N. S.

Furs  **Furs**  **Furs.**

Visitors to the Exhibition, call at

COLEMAN'S

And examine their fine stock of FASHIONABLE FURS, all manufactured this
 season, from the choicest of Skins, including

Ladies' Alaska Seal Sacques and Walking Jackets.
 Ladies' Silk and Cloth Russian Circulars, lined
 with Fur and Silk, all the latest patterns and colors.

Something New. Ladies' Fancy Cloth Capes, with Fur
 Lining. Also, Muffs, Collars,
 Shoulder Capes, Boas,

And all kinds of Furs too numerous to mention.

HATS, CAPS, TRUNKS, VALISES, ETC.

143 GRANVILLE STREET, HALIFAX, N. S.

Musc
 I
 given
 size o
 R
 prese
 I
 ages s
 S

SEC.
 1. R
 2.
 3.
 4. Pa
 5.
 6.

SEC.
 1. R
 2.
 3.
 4. Pa
 5.
 6.

SEC.
 1. R
 2.
 3.
 4. Pa
 5.
 6.

SHEEP.

COMMITTEE.

Prof. Lawson, Chairman; Messrs. J. A. Leaman, George P. Henry, C. N. Sprott, Musquodoboit, Joseph Matheson, M.P.P., John R. Graham, Dartmouth.

In making entries the owner's name and address in full, also the age of animals, must be given. Judges are requested to be guided in their awards more by purity of blood than size of Sheep and quantity of wool.

Ewes, two shears and over, in all classes except Fat Sheep, must have raised lambs the present season.

If required, exhibitors must make a statutory declaration that the animals are of the ages stated by them.

Sheep must be on the grounds by 6 p. m. of 28th September.

Class 28.—Cotswolds.

SEC.		1st.	2nd.
1.	Ram, 2 shears and over,	\$8	\$6
2.	" Shearling,	7	5
3.	" Lamb,	6	4
4.	Pair Ewes, 2 shears and over,	8	6
5.	" Shearlings,	7	5
6.	" Lambs,	6	4

Class 29.—Leicesters.

SEC.		1st.	2nd.
1.	Ram, 2 shears and over,	\$8	\$6
2.	" Shearling,	7	5
3.	" Lamb,	6	4
4.	Pair Ewes, 2 shears and over,	8	6
5.	" Shearlings,	7	5
6.	" Lambs,	6	4

Class 30.—Shropshires.

SEC.		1st.	2nd.
1.	Ram, 2 shears and over,	\$8	\$6
2.	" Shearling,	7	5
3.	" Lamb,	6	4
4.	Pair Ewes, 2 shears and over,	8	6
5.	" Shearlings,	7	5
6.	" Lambs,	6	4

Boston, Halifax and P. E. Island Steamship Line, Limited.

THE OLD RELIABLE.

Halifax to Boston every Saturday.

NEW STEAMSHIP "STATE OF INDIANA," 2587 TONS.
STEAMSHIP "CARROLL," 1400 TONS.

**Best Accommodation,
Largest Steamers,
Cheapest Fares.**

Apply to Jas. F. Phelan & Son, Agt's,

117 and 119 Lower Water Street, Halifax.

R. B. GARDNER, MANAGER,
34 Atlantic Avenue, Boston, Mass.

ESTABLISHED IN 1863.

**James Duggan & Sons,
Auctioneers, Commission Merchants and Real Estate Brokers.**

Office and Salesrooms, City Market Building.

Special attention is given to sales of Live Stock, and all description of Country Produce, as well as Damaged Goods and Wrecked Materials, Household Furniture and Real Estate.

Our Rooms are conveniently situated for Produce Sales, and prompt payments are guaranteed.

Live Stock Salesyard at Richmond.



C. S. LANE,

Importer of

HATS and FURS.

Agent for J. Evelight & Co. (Montreal), Manufacturers of
Raw Hide Trunks and Valises,

113 GRANVILLE ST., HALIFAX.

Class 31.—Southdowns.

SEC.		1st.	2nd.
1.	Ram, 2 shears and over,	\$8	\$6
2.	" Shearling,	7	5
3.	" Lamb,	6	4
4.	Pair Ewes, 2 shears and over,	8	6
5.	" Shearlings,	7	5
6.	" Lambs,	6	4

Class 32.—Oxford and Hampshire Downs, and other medium Wool not specially enumerated.

SEC.		1st.	2nd.
1.	Ram, 2 shears and over,	\$8	\$6
2.	" Shearling,	7	5
3.	" Lamb,	6	4
4.	Pair Ewes, 2 shears and over,	8	6
5.	" Shearlings,	7	5
6.	" Lambs,	6	4

Class 33.—Lincoln & other long Wool not specially enumerated.

SEC.		1st.	2nd.
1.	Ram, 2 shears and over,	\$8	\$6
2.	" 1 "	7	5
3.	" Lamb	6	4
4.	Pair Ewes, 2 shears and over,	8	6
5.	" 1 "	7	5
6.	" Lambs,	6	4

Class 34.—Merino, and other fine Wool.

SEC.		1st.	2nd.
1.	Ram, 2 shears and over,	\$8	\$6
2.	Pen of Ewe Lambs, not less than three or more than five,	10	8

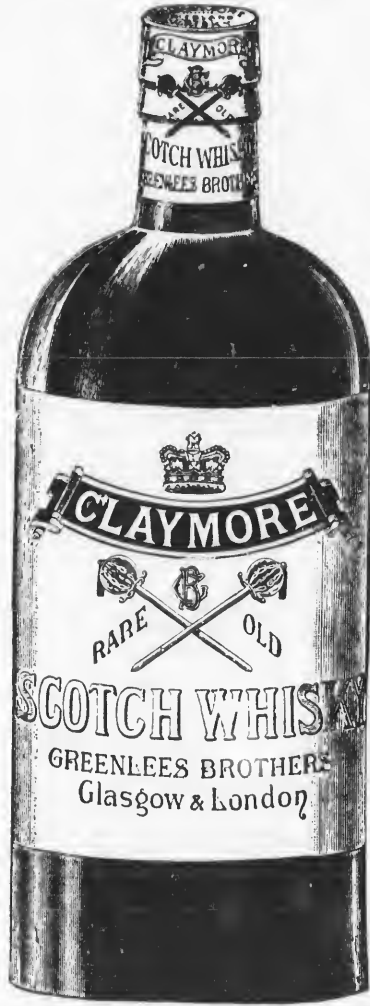
Class 35.—Fat Sheep, any breed.

SEC.		1st.	2nd.
1.	Pair Fat Wethers, 2 shears and over	\$10	\$8
2.	" 1 "	10	8
3.	Pair Fat Ewes,	10	8
4.	" Lambs,	6	4

CLAYMORE,

THE CREAM OF SCOTCH WHISKIES.

THE FINEST WHISKEY IMPORTED INTO CANADA.



CLODE & BAKER'S

INVALID'S PORT WINE,

Specially prepared for medicinal use, is the best wine in the market.

For sale by all Druggists and Wine Merchants.

ASK FOR IT, AND TAKE NO OTHER.

P
Musq
T
the en
I
in the
J
also t
A

- SEC.
1. B
2.
3.
4. S
5.
6.
7. B

- SEC.
1. B
2.
3.
4. S
5.
6.
7. Br

SWINE.

COMMITTEE.

Prof. Lawson, Chairman; Messrs. J. A. Leaman, George P. Henry, C. N. Sprott, Musquodoboit, Joseph Matheson, M.P.P., John R. Graham, Dartmouth.

The owner's name and address with precise age of animal must be given when making the entry.

If required, exhibitors must make a statutory declaration that their animals are entered in their proper sections.

Judges are expected to see that the animals are entered in the proper class and section, also to enquire into the purity of the breeding of all animals.

An animal cannot be entered in any section different from its age.

Class 36—Improved Berkshire.

SEC.		1st.	2nd.
1.	Boar, over 2 years,	\$10	\$7
2.	“ over 1 year and under 2 years,	8	6
3.	“ over 6 months and under 1 year,	6	4
4.	Sow, over 2 years,	10	7
5.	“ 1 year and under 2 years,	8	6
6.	“ 6 months and under 1 year,	6	4
7.	Breeding Sow, with litter—not less than 5 pigs	12	

Class 37—Improved Large Yorkshire.

SEC.		1st.	2nd.
1.	Boar, over 2 years,	\$10	\$7
2.	“ 1 year and under two years,	8	6
3.	“ 6 months and under 1 year,	6	4
4.	Sow, over 2 years,	10	7
5.	“ 1 year and under 2 years,	8	6
6.	“ 6 months and under 1 year,	6	4
7.	Breeding Sow, with litter—not less than 5 pigs,	12	

TEAS.

J. E. MORSE & CO.,

HALIFAX, N. S.

AGENTS FOR

Ceylon Tea Growers' Association,

COLOMBO,

—AND DIRECT IMPORTERS OF—

CHINA

—AND—

INDIAN

TEAS.

Now offering special values in Ceylon and Indian blends. Samples on application.

Office: 77 Upper Water Street, City.

New England Paper Company.

HALIFAX BRANCH, 139 GRANVILLE STREET,

JAMES C. JONES, Manager.

HALIFAX, N. S.

Mills: Portneuf, P. Q. Head Office: Montreal.

W. L. TEMPLE,

—IMPORTER OF—

China, Indian and Ceylon Teas,

209 Hollis Street, Halifax, N.S.

SEC.

- 1.
- 2.
- 3.
4. S
- 5.
- 6.
7. I

SEC.

1. F
- 2.
- 3.
4. S
- 5.
- 6.
7. B
8. B

Ele

P.

Illustr

Head

141 G

Class 38—Suffolks and Essex.

SEC.		1st.	2nd.
1.	Boar, over 2 years,	\$10	\$7
2.	“ 1 year and under 2 years,	8	6
3.	“ 6 months and under 1 year,	6	4
4.	Sow, over 2 years,	10	7
5.	“ 1 year and under 2 years,	8	6
6.	“ 6 months and under 1 year,	6	4
7.	Breeding Sow, with litter—not less than 5 pigs,	12	

Class 39—All other Breeds and Crosses.

SEC.		1st.	2nd.
1.	Boar, over 2 years,	\$10	\$7
2.	“ 1 year and under 2 years,	8	6
3.	“ 6 months and under 1 year,	6	4
4.	Sow, over 2 years,	10	7
5.	“ 1 year and under 2 years,	8	6
6.	“ 6 months and under 1 year,	6	4
7.	Breeding Sow and litter—not less than 5 pigs,	12	
8.	Boar and Sow of any pure breed for which prizes are not specially offered	10	

JOHN STARR,

WHOLESALE AND RETAIL DEALER IN

Electric Light, Telephone, Telegraph

And General Electrical Apparatus and Supplies.

P. O. Box 448.

2, 4 and 6 Duke Street,

HALIFAX, N. S.

Illustrated Catalogue on Application.

Correspondence Solicited.

THE METHODIST BOOK ROOM,

141 Granville Street, Halifax, N. S.

Telephone 671.

Depot for

{ OXFORD TEACHERS'
OXFORD STUDENTS'
OXFORD POCKET

} **BIBLES.**

Headquarters for Sunday School Libraries, General and Theological Books, Staple and Fancy Stationery, Etc.

141 GRANVILLE ST., - - - - HALIFAX, N. S.

S. F. HUESTIS, Book Steward.

WHILE YOU ARE DOING THE

EXHIBITION,

PLEASE DON'T FORGET TO

EXAMINE THE EXHIBIT

FROM THE

LONDON DRUG STORE

147 HOLLIS ST.,
HALIFAX.

J. GODFREY SMITH,

DISPENSING CHEMIST,

PROPRIETOR.

Nisbet's Milk of Cucumber,

Nisbet's Coca Cough Cure,

The R. A. Tonic "Phosphate,"

Davis' Antibilious Root and Herb Bitters,

Church's Gout and Rheumatic Remedy, &c.

Call up Telephone, 153.

— IN STOCK —

Spectacles, Opera Glasses, Botanical Glasses, Miners' Glasses, &c.

D
DeWo
E
any er
A
Banta
Sp
C
They r
with p
they m
to 3½ f
long.
TH
En
in colle
which
All

Sec.

1. Br
- 2.
- 3.
- 4.
5. Co
- 6.
- 7.
- 8.
- 9.
- 10.
- 11.
- 12.
- 13.
- 14.

POULTRY.

COMMITTEE.

Dr. A. Cogswell, Chairman; Messrs. Thomas Goudge, Joseph S. Belcher, J. E. DeWolf, A. W. Redden, Andrew Downs, John Naylor, Thomas J. Egan.

Exhibitors must be careful to have specimens correctly named in their entry papers, as any error in this respect will be fatal to successful competition.

All specimens must be exhibited in their natural condition; but Games and Game Bantams dubbed or trimmed in the ordinary manner will not be excluded from competition.

Specimens must be exhibited in attractive and convenient coops or cages.

Coops must be open only at the front, which must be of wire or of twine netting. They must be so constructed as to be easily opened by the judge, and must be furnished with proper appliances for food and water. For convenience and uniformity of arrangement, they must be of the following dimensions, outside measurement: 2½ ft. high, 2 ft. deep, 2½ to 3½ ft. long. For bantams and pigeons 19 inches high, 12 inches deep, and 18 to 28 inches long. For turkeys and geese, at the discretion of the exhibitors.

The length of each coop must be stated on the entry papers.

Entries must be made for poultry and pigeons in pairs; chickens, ducklings and goslings in collections of not less than four, any sex. Cage birds to be entered singly, except doves, which must be shown in pairs.

All specimens must be entered in the name of the *actual owner*

Class 40. Fowls.

SEC.		1st.	2nd.
1.	Brahmas, Light,	\$2	\$1
2.	“ “ Chicks,	2	1
3.	“ Dark,	2	1
4.	“ “ Chicks,	2	1
5.	Cochins, Buff,	2	1
6.	“ “ Chicks,	2	1
7.	“ Partridge,	2	1
8.	“ “ Chicks,	2	1
9.	“ “ Pea Comb,	2	1
10.	“ “ “ Chicks,	2	1
11.	“ Black,	2	1
12.	“ “ Chicks,	2	1
13.	“ White,	2	1
14.	“ “ Chicks,	2	1
	4		

SEC.		1st.	2nd.
15.	Plymouth Rocks, Barred,	2	1
16.	“ “ Chicks,	2	1
17.	“ White,	2	1
18.	“ “ Chicks,	2	1
19.	Langshans, Black,	2	1
20.	“ “ Chicks,	2	1
21.	“ White,	2	1
22.	“ “ Chicks,	2	1
23.	Wyandottes, Silver,	2	1
24.	“ “ Chicks,	2	1
25.	“ Golden,	2	1
26.	“ “ Chicks,	2	1
27.	“ White,	2	1
28.	“ “ Chicks,	2	1
29.	Black Javas,	2	1
30.	“ Chicks,	2	1
31.	Dominiques,	2	1
32.	“ Chicks,	2	1
33.	Red Caps,	2	1
34.	“ Chicks,	2	1
35.	Rumpless,	2	1
36.	“ Chicks,	2	1
37.	Black Russians,	2	1
38.	“ Chicks,	2	1
39.	Oppingtons,	2	1
40.	“ Chicks,	2	1
41.	Hamburgs, Golden Spangled,	2	1
42.	“ “ Chicks,	2	1
43.	“ Silver Spangled,	2	1
44.	“ “ Chicks,	2	1
45.	“ Black,	2	1
46.	“ “ Chicks,	2	1
47.	“ White,	2	1
48.	“ “ Chicks,	2	1
49.	“ Golden Pencilled,	2	1
50.	“ “ Chicks,	2	1
51.	“ Silver Pencilled,	2	1
52.	“ “ Chicks,	2	1
53.	Dorkings, Silver Grey,	2	1
54.	“ “ Chicks,	2	1
55.	“ Colored,	2	1
56.	“ “ Chicks,	2	1
57.	“ White,	2	1

SEC. 58.
59.
60.
61.
62.
63.
64.
65.
66.
67.
68.
69.
70.
71.
72.
73.
74.
75.
76.
77.
78.
79.
80.
81.
82.
83.
84.
85. S
86.
87. V
88.
89.
90.
91. G
92.
93. S
94.
95. G
96.
97. S
98.
99. W

PRIZE LIST-POULTRY.

51

1st.	2nd.	SPEC.	1st.	2nd.
2	1	58. Dorkings, White, Chicks,	2	1
2	1	59. W. F. Black Spanish,	2	1
2	1	60. " Chicks,	2	1
2	1	61. White Leghorns,	2	1
2	1	62. " Chicks,	2	1
2	1	63. Black Leghorns,	2	1
2	1	64. " Chicks,	2	1
2	1	65. Brown Leghorns,	2	1
2	1	66. " Chicks,	2	1
2	1	67. Andalusians,	2	1
2	1	68. " Chicks,	2	1
2	1	69. Dominique Leghorns,	2	1
2	1	70. " Chicks,	2	1
2	1	71. Rose Comb White Leghorns,	2	1
2	1	72. " " Chicks,	2	1
2	1	73. " Brown Leghorns,	2	1
2	1	74. " " Chicks,	2	1
2	1	75. Black Minorcas,	2	1
2	1	76. " Chicks	2	1
2	1	77. White Minorcas,	2	1
2	1	78. " Chicks,	2	1
2	1	79. Houdans,	2	1
2	1	80. " Chicks,	2	1
2	1	81. Creve Cœur,	2	1
2	1	82. " Chicks,	2	1
2	1	83. La Fleche,	2	1
2	1	84. " Chicks,	2	1
2	1	85. Sultans,	2	1
2	1	86. " Chicks	2	1
2	1	87. W. C. Black Polish,	2	1
2	1	88. " " Chicks,	2	1
2	1	89. " White Polish,	2	1
2	1	90. " " Chicks,	2	1
2	1	91. Golden Polish,	2	1
2	1	92. " Chicks,	2	1
2	1	93. Silver Polish,	2	1
2	1	94. " Chicks,	2	1
2	1	95. Golden Bearded Polish,	2	1
2	1	96. " Chicks,	2	1
2	1	97. Silver Bearded Polish,	2	1
2	1	98. " Chicks,	2	1
2	1	99. White Bearded Polish,	2	1

VISITORS ATTENTION !

A SPECIAL invitation is extended to all visitors to Halifax during the Exhibition to visit and inspect our stock of—

High Class Watches, Jewellery, and Silverware, Bric-a-Brac,
&c., &c.,

—APPROPRIATE FOR—

Personal and Household use and for Presentations.

Additional Attractions :—

SPACIOUS and ELEGANTLY FITTED PREMISES.

EVERY ASSISTANCE RENDERED FOR INSPECTING BY COURTEOUS ATTENDANTS.

M. S. BROWN & CO.,

(Established A. D. 1840.)

Jewellers, Silversmiths, Watchmakers, Engravers,
Electro-Platers in Gold, Silver and Nickel.

128-130 GRANVILLE STREET.

THE STARR MANUFACTURING CO., LTD.,

Office, 74 Bedford Row, Halifax. Works, Dartmouth, N. S.

Original and only makers of
are altogether unreliable
and workmanship. The
stamped with the Company's name and also with our registered trade-mark "ACME."

GENUINE ACME CLUB SKATES,

Beware of imitations which
and inferior in both material
genuine Skates are well

Cut Nails and Spikes, Bolts, Nuts, Rivets, Washers, Lag Screws, Track Bolts, Railway
Spikes, Black and Galvanized Ship Spikes.

ELECTRO-PLATING in Gold, Silver, and Nickel. Carriage and Stove Mountings and Table Ware our specialties.
Machine Jobbing, and all classes of Machine Work. Special facilities for Gear Cutting, Metal Punching,
and Forming Drop Hammer Work and Special Forgings.

CORRESPONDENCE SOLICITED.

HON. J. J. C. ABBOTT, Q. C.,
Senator,
President.

E. P. HECTON,
Manager.

ANDREW ALLAN,
Allan Line R. M. Steamship,
Vice-President.

Citizens' Insurance Co.
OF CANADA.

FIRE & ACCIDENT.

Head Office, Montreal. Agencies in all cities and towns throughout Canada.
General Agency for Nova Scotia,

93 Granville St., Halifax,

WM. DUFFUS, Genl. Agent.

SEC.
27.
28.
29.
30.
31.
32.
33.
34.
35.
36.

SEC.
1.
2.
3.
4.
5.
6.
7.
8.
9.
10.
11.
12.
13.
14.
15.
16.

SEC.
1. V
2. E
3. Y
4. R
5. M
6. C
7.
8.
9. P
10. P

S.F.C.		1st.	2nd.
27.	African Geese,	2	1
28.	African " Goslings,	2	1
29.	Egyptian, "	2	1
30.	" " Goslings,	2	1
31.	White China Geese,	2	1
32.	" " Goslings,	2	1
33.	Brown China Geese,	2	1
34.	" " Goslings,	2	1
35.	Embsden, "	2	1
36.	" " Goslings,	2	1

Class 42—Turkeys.

SEC.		1st.	2nd.
1.	Bronze,	\$3	\$2
2.	" Chicks,	3	2
3.	White,	3	2
4.	" Chicks,	3	2
5.	Narrangansett,	3	2
6.	" Chicks,	3	2
7.	Slate,	3	2
8.	" Chicks,	3	2
9.	Black,	3	2
10.	" Chicks,	3	2
11.	Blue,	3	2
12.	" Chicks,	3	2
13.	Buff,	3	2
14.	" Chicks,	3	2
15.	Any other variety of Turkey,	3	2
16.	" " " Chicks,	3	2

Class 43—Pet Stock.

SEC.		1st.	2nd.
1.	White Fantail Pigeons,	\$1	\$ 75
2.	Black "	1	75
3.	Yellow "	1	75
4.	Red "	1	75
5.	Mottled "	1	75
6.	Canary, Yellow Cock,	1	50
7.	" Green "	1	50
8.	" Mottled "	1	50
9.	Parrot,	1	50
10.	Pair Doves,	1	50

N !

Exhibition

PRIZES.

ENTS.

CO.,

T.

LTD.,

N. S.

imitations which in both material and rates are well

ts, Railway

our specialties. Metal Punching,

LICITED.

ALLAN, Steamship, Agent.

Co.

ut Canada.

l. Agent.

SEC.		1st.	2nd.
11.	Lady Amherst Pheasants,	3	1 00
12.	Golden "	3	1 00
13.	Silver "	3	1 00
14.	Guinea Fowls,	2	1 00
15.	Pea Fowl,	3	1 00
16.	Pair Rabbits,	1	50
17.	Extras,		

DOGS.

COMMITTEE.

Dr. A. C. Cogswell, Chairman; Messrs. Thomas Goudge, Joseph S. Belcher, J. E. DeWcif, A. W. Redden, Andrew Downs, John Naylor, T. J. Egan.

The word *dog*, when used in these rules, includes both sexes.

The entries for all dogs must contain the name and address of the *bona fide* owner, also name of dog, age, names of sire and dam, and name of breeder if known. If the name of a dog has been changed, the old name must be entered in the entry paper.

The Directors reserve to themselves the right to remove any dog from the Exhibition on account of disease, vice, or any other cause. The Consulting Veterinary Surgeon shall decide whether a dog is suffering from disease, and his decision shall be final.

The Judges may withhold any or all prizes in any section where animals are not of sufficient merit.

The age of dogs shall be computed from 1st January, 1891.

No dog will be permitted to leave the grounds at night until a deposit of \$1 has been made with the Secretary as security the dog will be returned before 9 a.m. on the following day.

Dogs will not be received unless supplied with a suitable collar and chain.

Exhibitors will be allowed to exercise their dogs from 8 a.m. till 9 a.m., and from 6 p.m. till 7 p.m., daily, but at no other time.

Entries close on 29th August.

Class 44—Dogs.

SEC.		1st.	2nd.
1.	Mastiff, Dog or Bitch,	2	1
2.	" Pup, "	2	1
3.	St. Bernard, "	2	1
4.	" Pup, "	2	1
5.	Newfoundland, "	2	1
6.	" Pup, "	2	1

PRIZE LIST—DOGS.

1st. 2nd.
 5 1 00
 3 1 00
 3 1 00
 2 1 00
 3 1 00
 1 50

elcher, J. E.

owner, also
 the name of

e Exhibition
 urgeon shall

e not of suf-

\$1 has been
 the following

from 6 p.m.

1st. 2nd.
 2 1
 2 1
 2 1
 2 1
 2 1
 2 1
 2 1

SEC.	Dog or Bitch,	1st.	2nd.
7.	Deer Hound, Dog or Bitch,	2	1
8.	" Pup, "	2	1
9.	Fox Hound, "	2	1
10.	" "	2	1
11.	Grey Hound, "	2	1
12.	" Pup, "	2	1
13.	Deutch Hound, "	2	1
14.	" Pup, "	2	1
15.	Pointer, "	2	1
16.	" Pup, "	2	1
17.	English Setter, "	2	1
18.	" Pup, "	2	1
19.	Irish Setter, "	2	1
20.	" Pup, "	2	1
21.	Gordon Setter, "	2	1
22.	" Pup, "	2	1
23.	Water Spaniel, "	2	1
24.	" Pup, "	2	1
25.	Field Spaniel, "	2	1
26.	" Pup, "	2	1
27.	Cocker Spaniel, "	2	1
28.	" Pup, "	2	1
29.	Blenheim Spaniel, "	2	1
30.	" Pup, "	2	1
31.	King Charles Spaniel, "	2	1
32.	" Pup, "	2	1
33.	Fox Terrier, "	2	1
34.	" Pup, "	2	1
35.	Bull Terrier, "	2	1
36.	" Pup, "	2	1
37.	Skye Terrier, "	2	1
38.	" Pup, "	2	1
39.	Black and Tan Terrier, "	2	1
40.	" Pup, "	2	1
41.	" (Toy) "	2	1
42.	" " Pup, "	2	1
43.	Scotch Terrier, "	2	1
44.	" Pup, "	2	1
45.	Irish Terrier, "	2	1
46.	" Pup, "	2	1
47.	Yorkshire Terrier, "	2	1
48.	" Pup, "	2	1
49.	English Retriever, "	2	1

50. English Retriever Pup, Dog or Bitch,	2	1
51. Irish Retriever,	“	2	1
52. “ Pup,	“	2	1
53. Dandy Dent,	“	2	1
54. “ Pup,	“	2	1
55. Rabbit Beagle,	“	2	1
56. “ Pup,	“	2	1
57. Italian Greyhound,	“	2	1
58. “ Pup,	“	2	1
59. Shæep dog trained to drive flock	5	...
60. Best animal in Show,	5	...

DAIRY PRODUCTS.

COMMITTEE.

Messrs. C. W. Anderson, Chairman; Hector McDougall, M. P.; Angus McGillivray, Antigonish; Colonel Blair, Mappan; P. M. Duggan, William Keeler, R. H. Edwards, William S. Hutcheson.

Exhibitors must make a statutory declaration (if required of them) that the cheese shown was made in the factory named, within the dates mentioned in the Premium List. Any exhibitor misrepresenting as to dates or otherwise, will forfeit any prizes that may be awarded.

All cheese and butter exhibited must be salted with some improved dairy salt, and with a view of securing a uniform salting of the butter upon exhibition, it is recommended that seven-eighths of an ounce of salt be used to each pound of butter.

The cheese and butter exhibited at former Exhibitions always sold on the spot at good prices. If the article is good not a pound need be taken home again.

There will be an ample supply of ice, and every arrangement made to ensure an effective display.

Class 45.

SEC.		1st.	2nd.	3rd.	4th.	5th.	6th.
1.	Crock or Tub Butter, not less than 15 pounds	6	5	4	3	2	1
2.	Rolls, Prints, or Boxes Butter, not less than 5 pounds	4	3	2	1	0	0
3.	Glass Crock Butter, 5 pounds	4	3	2	1	0	0

2	1								
2	1								
2	1								
2	1								
2	1								
2	1								
2	1								
5	...								
5	...								
4. Three Firkins Butter, put up for exportation (each package weighing 56 pounds), made at any Butter Factory or Creamery with a working capacity of not less than 50 cows' milk. (Exhibitors to furnish written description of mode of manufacture, including breed and number of cows, style of factory, treatment of milk, quantity, brand, and make of salt used, also any other information they may be able to afford 30 25 15 10 5 0									
5 Firkin Butter weighing 56 pounds, in shipping order for exportation, made at any private dairy owning less than 50 cows 12 10 8 5 3 0									
6. Five firkins Butter, weighing not less than 40 pounds net each, put up by any Farmer or Merchant for market 20 15 10 5 0 0									
7 Cheese, factory made, not less than 40 pounds nor more than 80 pounds, made on any day between 1st and 15th August, 1891, both days inclusive..... 9 8 7 6 5 4									
8. Cheese, home made dairy, not less 15 pounds 5 4 3 2 1 0									

Wm. Macnab,



LAW AND COMMERCIAL PRINTER,

3 PRINCE STREET,

HALIFAX, N. S.

THIS office is fitted up with the most improved machinery, and the stock of type is the largest and best assorted in the province. The facilities for rapid production of Book and Pamphlet work are unequalled.

ESTIMATES FURNISHED on application as to the cost of work.

Halifax Hotel - - Halifax, N. S.



THE LARGEST AND FINEST
Equipped Hotel

In the Maritime Provinces.

Cuisine Unsurpassed.

H. HESSELEIN & SONS

Halifax offers, through the assistance of the Military, a variety of attractions not equalled by any other city in Canada.

Tourists will find the climate delightful. The Park and Public Gardens in and about the city are already favorably known.

TRADE
MOST EXCELLENT.

MARK.

Ginger Ale,
Grape Soda,
Champagne Cider,
Buffalo Mead,
Victoria Spa Waters.

Lemon Soda,
Cream Soda,
Sarsaparilla,
Neura-Cura,
And pure Fruit Syrups.

Silver Medal

Jamaica Exhibition, '91.

Highest award granted.

J. E. BIGELOW & CO.,

MANUFACTURERS OF

Aerated Waters,

—AND—

WHOLESALE BOTTLERS,
Wholesale Cigar Merchants,

TRURO, N. S.

1st Prize Prov. Exhibition, '88.

Agents for

C. REINHARDT & SON'S

MONTREAL

LAGER & WEISS BEERS,

In Wood and Bottle.

Special Agents for

P. & J. O'MULLIN'S

HALIFAX

XXX Amber Ale

AND

Brown Stout Porter,

In Wood and Bottles.

SEC.

1. I
2. I
3. I
4. I
5. I
6. B
7. F
- I
8. C
9. C
10. W
11. N
12. H
13. E

HONEY AND APIARY SUPPLIES.

COMMITTEE.

Messrs. C. W. Anderson, Chairman; Hector McDougall, M. P., Angus McGillivray, Antigonish, Colonel Blair, Nappan, P. M. Duggan, William Keeler, R. H. Edwards, William S. Hutcheson.

All honey exhibited must be the production of the exhibitor.

Exhibitors selling honey during the Exhibition (for which right a small fee will be charged) will not be allowed to make any removal from their regular exhibit, but may have a special supply on hand from which their honey sold may be taken.

Exhibitors offering comb honey for sale will not be allowed to cut the sections, but must sell whole sections put up securely in manilla or paste-board boxes or bags, and purchasers notified not to eat it in the building.

Class 46.

OPEN TO ALL BEEKEEPERS (AGENTS EXCLUDED.)

SEC.		1st.	2nd.
1.	Largest and best display of Honey	6	4 00
2.	Display of Extracted Granulated Honey, in glass, net less than 20 pounds	2	1 50
3.	Display of Liquid Extracted Honey, in glass, not less than 20 pounds	2	1 50
4.	Display of Comb Honey, in sections not less than 20 pounds quality to be considered; that is to say, clean sections and best filled	2	1 50
5.	Display of Extracted Liquid Clover Honey, in glass, not less than 10 pounds	2	1 50
6.	Best Winter and Summer Hive ..	2	1 50
7.	Five pounds Beeswax	2	1 50
	Display of Aparian Supplies, etc.....	3	2 00
8.	Comb Foundations for Brood Chambers	Diploma.	
9.	Comb Foundations for Honey Boxes.....	"	
10.	Wax Extractor.....	"	
11.	Non-Swarming Hive	"	
12.	Honey Extractor for General Use.....	"	
13.	Extras,	"	

Agricultural Products.

COMMITTEE.

Messrs. Herbert Harris, Chairman; J. G. Bissett, Cole Harbour, George Clarke, M. P. P., W. J. Veith, Alderman Sanford, C. F. Lydiard, Alfred Saunders.

All grains, seeds, and other agricultural products must be the growth of 1891.

The names of the different varieties of wheat, oats and other grain and seeds, must be inserted by exhibitors in their entries.

The roots must be certified as of field culture by exhibitors, except potatoes which are open to all.

Class 47.—Field Grain.

Sec.		1st.	2nd.
1.	Bushel White Winter Wheat,	\$3 00	\$2 00
2.	“ Red “	3 00	2 00
3.	“ White Spring Wheat,	3 00	2 00
4.	“ Red “ “	3 00	2 00
5.	“ Buckwheat (Rough),	2 00	1 50
6.	“ “ (Smooth)	2 00	1 50
7.	“ “ Japan,	2 00	1 50
8.	“ Barley (2 Rowed),	2 00	1 50
9.	“ “ (6 “ “	2 00	1 50
10.	“ Oats, White Banner	2 00	1 50
11.	“ “ Black,	2 00	1 50
12.	“ “ Tartarian,	2 00	1 50
13.	“ “ Black, any other variety,	2 00	1 50
14.	“ “ White, Giant of Legowa,	2 00	1 50
15.	“ “ “ any other variety,	2 00	1 50
16.	“ Indian Corn, White Flint,	2 00	1 50
17.	“ “ Yellow Dent,	2 00	1 50
18.	12 Ears “ “ Canada,	1 00	75
19.	12 “ “ Extra early White, Mitchell's,	1 00	75
20.	12 “ “ “ Sweet,	1 00	75
21.	6 Stalks “ with not less than 3 ears on each any variety,	2 00	1 50
22.	1 Bundle Corn for ensilage—not less than 12 stalks with name of variety	2 00	1 50
23.	1 Bushel Rye, Winter,	2 00	1 50

Sec.
24.
25.
26.
27.
28.
29.
30.
31.
32.
33.
34.
35.
36.
37.
38.
39.
40.
41.
42.
43.
44.
45.

Sec.
1.
2.
3.
4.
5.
6.
7.
8.
9.
10.
11.
12.
13.
14.
15.
16.
17.
18.
19.

Sec.		1st.	2nd.
24.	1 Bushel Rye, Spring,	\$2 00	\$1 50
25.	1 Peck Peas, Small Field,	2 00	1 50
26.	1 " " Blackeyed,	2 00	1 50
27.	1 " " Wrinkled,	2 00	1 50
28.	1 " " Golden Vine,	2 00	1 50
29.	1 " " Marrow Fat,	2 00	1 50
30.	1 " " any other variety (named),.....	2 00	1 50
31.	1 Peck Beans, White, Bush,	2 00	1 50
32.	1 " " Yellow, Bush,	2 00	1 50
33.	1 " " Horticultural, Bush,	2 00	1 50
34.	1 " " " Pole,	2 00	1 50
35.	1 " " Indian Chief,	2 00	1 50
36.	1 " " Asparagus,	2 00	1 50
37.	1 " " Scarlet Runner,	2 00	1 50
38.	1 " " Case Knife,	2 00	1 50
39.	1 " " Long Pod, Windsor,.....	2 00	1 50
40.	1 Peck Horse Beans,	2 00	1 50
41.	Sheaf of Oats, White,	1 50	1 00
42.	" " Black,	1 50	1 00
43.	Sheaf of Wheat, Red,	1 50	1 00
44.	" " White,	1 50	1 00
45.	12 Heads Broom Corn,	2 00	1 50

Class 48.—Small Field Seeds, Flax, &c.

SEC.		1st.	2nd.
1.	Half Bushel Timothy,	\$2 00	\$1 50
2.	" " Orchard Grass,	2 00	1 50
3.	" " Red Top,	2 00	1 50
4.	" " Lucerne,	3 00	2 00
5.	" " Red Clover,	3 00	2 00
6.	" " Alsike "	3 0	2 00
7.	" " White "	3 00	2 00
8.	5 lbs. Turnip, Sweedish, (named),	2 00	1 50
9.	" " " Yellow, "	2 00	1 50
10.	" " Mangel, Long Red,	1 50	1 00
11.	" " " Globe "	1 50	1 00
12.	" " " Yellow,	1 50	1 00
13.	" " Beet, Sugar,	1 50	1 00
14.	" " " Long Blood,	1 50	1 00
15.	Half Bushel Flax Seed,	3 00	2 00
16.	" " Hemp, "	3 00	2 00
17.	" " Rape,	3 00	2 00
18.	5 lbs. Carrot Seed, any variety,	2 00	1 50
19.	" " Parsnip "	2 00	1 50

Class 49.—Grain Manufactures, &c.

Sec.		1st.	2nd.
1.	100 lbs. Flour from Nova Scotia Wheat,	\$5 00	\$4 00
2.	100 " Meal " Oats,	4 00	3 00
3.	100 " " " Corn,	4 00	3 00
4.	100 " " " Buckwheat,	4 00	3 00
5.	20 " Peal Barley, " Grain,	2 00	1 50
6.	20 " Pot " " " "	2 00	1 50
7.	5 " Hops,	2 00	1 50
8.	Sheaf of Flax, Sented,	2 00	1 50

Class 50.—Field Roots.

Sec.			2nd.	3rd.
1.	Half Bushel Potatoes, Early Sunrise,	\$2 00	\$1 50	\$1 00
2.	" " Early Rose,	2 00	1 50	1 00
3.	" " Early Ohio,	2 00	1 50	1 00
4.	" " Puritan,	2 00	1 50	1 00
5.	" " Vermont,	2 00	1 50	1 00
6.	" " Beauty of Hebron,	2 00	1 50	1 00
7.	" " Snow Flake,	2 00	1 50	1 00
8.	" " Silver Dollar,	2 00	1 50	1 00
9.	" " White Elephant,	2 00	1 50	1 00
10.	" " Crown Jewel,	2 00	1 50	1 00
11.	" " White Star,	2 00	1 50	1 00
12.	" " Red Seedling,	2 00	1 50	1 00
13.	" " Dekota Red,	2 00	1 50	1 00
14.	" " Black Kidney,	2 00	1 50	1 00
15.	" " White Calico,	2 00	1 50	1 00
16.	" " Blue "	2 00	1 50	1 00
17.	" " Burbanks Seedling,	2 00	1 50	1 00
18.	" " Bruses Prolific,	2 00	1 50	1 00
19.	" " Magnum Bonum,	2 00	1 50	1 00
20.	" " Garnet Chili,	2 00	1 50	1 00
21.	" " Prince Albert,	2 00	1 50	1 00
22.	" " Pearl of Savoy,	2 00	1 50	1 00
23.	" " Pride of the West,	2 00	1 50	1 00
24.	" " St. Patrick,	2 00	1 50	1 00
25.	" " Rural New Yorker,	2 00	1 50	1 00
26.	" " Thorburn,	2 00	1 50	1 00
27.	" " any other variety, table,	2 00	1 50	1 00
28.	" " " " feed,	2 00	1 50	1 00

Sec.
29.

30.

31.

32.

33.

34.

35.

36.

37.

38.

39.

40.

41.

42.

42.

43.

43.

44.

45.

46. M

47.

48.

49.

50. K

51.

52. C

Sp

Co

offering

out by

Sec.

1. Ab

2. De

3. Go

4. Im

5. Ki

6. Sta

PRIZE LIST—AGRICULTURAL PRODUCTS.

SEC.		1st.	2nd.	3rd.
29.	Best collection of Potatoes, not less than six of each kind, from a field of the same, not less than one acre. Varieties to be named and labelled, all to be grown by exhibitor. Size of the field to be certified by a Justice of the Peace,	5 00	3 00	2 00
30.	Turnips, 6 Roots, Swede, Purple Top,	1 00	75	
31.	" 6 " " Green Top,	1 00	75	
32.	" 6 " " Improved Purple Top,	1 00	75	
33.	" 6 " Aberdeen Green Top,	1 00	75	
34.	" 6 " " Purple Top,	1 00	75	
35.	" 6 " Golden Ball,	1 00	75	
36.	" 6 " Red Top, Strap Leaf,	1 00	75	
37.	" 6 " White Globe, Strap Leaf, ...	1 00	75	
38.	Carrots, 6 Roots, Gaerande or Oxheart,	1 00	75	
39.	" 6 " Early Horn,	1 00	75	
40.	" 6 " Half Long Scarlet Nantes,	1 00	75	
41.	" 6 " James' Intermediate,	1 00	75	
42.	" 6 " Large Orange,	1 00	75	
42.	" 6 " Long Scarlet Altringham,	1 00	75	
43.	" 6 " White Belgian,	1 00	75	
43.	" 6 " Large White Vosges,	1 00	75	
44.	" 6 " Short Vosges,	1 00	75	
45.	" " " Orange Giant,	1 00	75	
46.	Mangold Wurtzel, 6 Roots, Long Red Mammoth,	1 00	75	
47.	" 6 " Golden Tankard,	1 00	75	
48.	" 6 " Giant, Yellow Intermediate,	1 00	75	
49.	" 6 " Giant Yellow Globe,	1 00	75	
50.	Koh' labi, 6 Roots, Purple,	1 00	75	
51.	6 " White,	1 00	75	
52.	Chicory, 6 Roots,	75	50	

Class 51.—Potatoes, Special Prizes.

Special prizes for new Potatoes introduced by Herbert Harris, Esq., Halifax Nursery.

Conditions:—The Potatoes winning prizes in all cases becomes the property of the party offering the prizes, and the exhibits must be guaranteed the product from specimens sent out by H. H.

Sec.		1st.	2nd.
1.	Abundance, ½ peck,	\$1 50	\$1 00
2.	Delight, "	1 50	1 00
3.	Golden Ball, "	1 50	1 00
4.	Imperator, "	1 50	1 00
5.	King of Russets, "	1 50	1 00
6.	Standard, "	1 50	1 00



SMITH BROS.,

Wholesale Staple and Fancy

DRY GOODS AND MILLINERY.



WE offer one of the Largest and Best Assorted Stocks to be found in the Dominion.

Prices Low and _____

Terms Liberal.

We keep six travellers on the road, and all orders entrusted to them will receive our best and prompt attention.

N. B. — Special attention always devoted to
 Orders by Mail.

SMITH BROS.

150 GRANVILLE STREET, - - - HALIFAX, N. S.

Geo

Sept

miss
with

New

statu
in m

prot

SEC.

1. I

2.

3.

4.

5.

6.

7.

8. I

9.

10.

11. O

12.

13.

14.

15.

16.

17.

18.

Horticultural Department.

COMMITTEE.

Messrs. Herbert Harris, Chairman; Dr. A. C. Cogswell, Richard Power, Prof. Lawson, George J. Troop, William Tait, Thomas Mitchell, J. E. Roy, Robert W. Starr, Wolfville.

Garden Vegetables, Fruit, Plants and Flowers.

Competitors can only make one entry and receive one premium in each section.

All articles must be correctly named and properly labelled.

All plants and flowers must be arranged before 9 o'clock on the morning of 29th September.

Exhibits once in the Building are under the control and subject to the order of the Commissioners and Committee in charge of Department and cannot be removed or withdrawn without permission.

By a variety of fruit it is meant an established variety known by name to pomologists. New varieties with local names are classed as seedlings.

When exhibits are made by gardeners in classes 54 and 55 they must either make a statutory declaration that plants are their own property, or give the name of their employer in making the entries.

Tomatoes, Squash and Cucumbers must have been grown in the open air without any protection after 20th June.

Class 52.—Garden Vegetables.

SEC.		1st.	2nd.
1.	Beets, 6 Roots, Egyptian,	75	50
2.	" 6 " Eclipse,	75	50
3.	" 6 " Bassino,	75	50
4.	" 6 " Long Blood,	75	50
5.	" 6 " Extra Early Crimson Ball,	75	50
6.	" 6 " Wyatt's Black,	75	50
7.	" 6 " Sugar White Red Top,	75	50
8.	Parsnips, 6 Roots, Hollow Crown,	75	50
9.	" 6 " Long Smooth,	75	50
10.	" 6 " Stadens,	75	50
11.	Onions, 12 " Danvers Yellow,	1 00	75
12.	" 12 " Giant Rocca (Red),	1 00	75
13.	" 12 " Westerfield "	1 00	75
14.	" 12 " Tripoli " Flat,	1 00	75
15.	" 12 " White,	1 00	75
16.	" 12 " Potatoe,	1 00	75
17.	" 12 " Eschallots,	1 00	75
18.	" Half-peck, Setts for Planting,	2 00	1 00

SEC.		1st.	2nd.
19.	Garlic, 12 Roots,	1 00	75
20.	Leeks, 1 dozen,	1 00	75
21.	3 Heads Celery, Crimson,	1 00	75
22.	3 " " White,	1 00	75
23.	3 " " Dwarf Red,	1 00	75
24.	3 " " " White,	1 00	75
25.	3 " " White Plumc,	1 00	75
26.	3 " " Paschal,	1 00	75
27.	3 " " Golden Heart,	1 00	76
28.	3 Heads Cabbage, Jersey Wakefield,	1 00	75
29.	3 " " Drumhead,	1 00	75
30.	3 " " Brunswick,	1 00	75
31.	3 " " Large Flat Dutch,	1 00	75
32.	3 " " Savoy,	1 00	75
33.	3 Heads Scotch Curly Kale,	1 00	75
34.	3 Heads Lettuce, Boston,	75	50
35.	3 " " White, Long Standing,	75	50
36.	3 " " Self-Folding,	75	50
37.	3 " " Magnum Bonum,	75	50
38.	3 Heads Brussels Sprouts,	75	50
39.	3 Heads Cauliflower, Imperial,	1 00	75
40.	3 " " Lenormand,	1 00	75
41.	3 " " Erfurt,	1 00	75
42.	3 " " Demi Dur,	1 00	75
43.	3 Heads Endives, Imperial Curled,	1 00	75
44.	3 " " White,	1 00	75
45.	5 Roots Salsify,	1 00	75
46.	6 " " Celeriac,	1 00	75
47.	2 Melons, Montreal Market,	1 00	75
48.	2 " " Paschal,	1 00	75
49.	2 " " Golden Heart,	1 00	75
50.	2 " " Musk,	1 00	75
51.	6 Tomatoes, Red Smooth,	1 00	75
52.	6 " " Yellow "	1 00	75
53.	6 " " Plum	1 00	75
54.	6 " " Strawberry,	1 00	75
55.	6 " " Any other variety,	1 00	75
56.	Collection of Tomatoes, not less than six sorts, six of each,	3 00	2 00
57.	2 Cucumbers, Telegraph,	1 00	75
58.	2 " " Long Pinkley,	1 00	75
59.	2 " " Whits Spine,	1 00	75
60.	2 " " Any other variety,	1 00	75
61.	2 Squash, Hubbard,	1 00	75

Class 53.—Fruit.

SEC.		1st.	2nd.	3rd.
1.	General Collection of Fruit from a County, <i>i. e.</i> , Apples, Pears, Peaches, Quinces, Grapes, Small Fruits, Nuts, etc., named and labelled; the Fruit to be grown in the County, but may be the produce of several orchards, credit being given to the several growers upon the labels. A plate of each,	\$5 00	\$4 00	\$3 00
2.	Collection of Fruit grown by exhibitor, correctly named. One dish of each,	6 00	5 00	4 00
APPLES.				
3.	Collection of Apples, not more than 24 sorts, one-third of which shall be new or at least not enumerated in the following list. Fruit may be the growth of several orchards. 5 of each variety, correctly named and labelled,	4 00	3 00	2 00
4.	One plate of any new Seedling Apple with written statement of origin, age of tree, chance seedling or hybrid, habits of growth, and number of crops. Prizes will not be awarded unless Fruit has some special points of excellence which make it worthy of future trial,	4 00	3 00	2 00
5.	One plate of any imported variety not included in the following list, with name, age of tree, habits of growth and number of crops,	4 00	3 00	2 00
6.	1 Dish of 5 Alexander,			
7.	“ Andrews or Major Sweet, Y. Co. Seedling,	1 25	1 00	75
8.	“ Baldwin,	1 25	1 00	75
9.	“ Ben Davis,	1 25	1 00	75
10.	“ Blenheim Orange,	1 25	1 00	75
11.	“ Blue Pearmain,	1 25	1 00	75
12.	“ Fallwater	1 25	1 00	75
13.	“ Fall Jennetting,	1 25	1 00	75
14.	“ Gavel Pippin, Y. Co. Seedling,	1 25	1 00	75
15.	“ Gloria Mundi,	1 25	1 00	75
16.	“ Golder Russet,	1 25	1 00	75
17.	“ Gravenstein,	1 25	1 00	75
18.	“ Greening R. L.,	1 25	1 00	75
19.	“ Grimes Golden,	1 25	1 00	75

SEC.
20.
21.
22.
23.
24.
25.
26.
27.
28.
29.
30.
31.
32.
33.
34.
35.
36.
37.
38.
39.
40.
41.
42.
43.
44.
45.
46.
47.
48.
49.
50.
51.
52.
53.
54.
55.
56.
57.

	SEC		1st.	2nd.	3rd.
	20.	1 Dish of 5 Holley, Y. Co, Seedling,	1 25	1 00	75
3rd.	21.	" Keswick's Codlin,	1 25	1 00	75
	22.	" King of Tompkins County,	1 25	1 00	75
	23.	" Maiden's Blush,	1 25	1 00	75
	24.	" Marquis of Lorne,	1 25	1 00	75
	25.	" Newton Pippin,	1 25	1 00	75
	26.	" Nonpareil,	1 25	1 00	75
	27.	" Northern Spy,	1 25	1 00	75
\$3 00	28.	" Non-such, Hubbardston's	1 25	1 00	75
	29.	" Oldenburg,	1 25	1 00	75
4 00	30.	" Ontario,	1 25	1 00	75
	31.	" Pomme Gris,	1 25	1 00	75
	32.	" Pound Sweet,	1 25	1 00	75
	33.	" Reynard Y. Co. Seedling,	1 25	1 00	75
	34.	" Ribston,	1 25	1 00	75
	35.	" Roxbury Russet,	1 25	1 00	75
	36.	" Rhymer's Russet,	1 25	1 00	75
2 00	37.	" Spitzenburg Esopus,	1 25	1 00	75
	38.	" Stonewall Jackson,	1 25	1 00	75
	39.	" Scott's Winter,	1 25	1 00	75
	40.	" Sweet Bough,	1 25	1 00	75
	41.	" Seek-no-further,	1 25	1 00	75
	42.	" Tulman Sweet,	1 25	1 00	75
	43.	" Wagner,	1 25	1 00	75
2 00	44.	" Wealthy,	1 25	1 00	75
	45.	" Yellow Bellefleur,	1 25	1 00	75
	46.	" Any other variety of Desert,	1 25	1 00	75
2 00	47.	" " Cooking,	1 25	1 00	75

CRAB APPLES.

75	48.	One Dish of 15 Transcendent,	1 00	75	50
75	49.	" " Montreal Beauty,	1 00	75	50
75	50.	" " Large Red,	1 00	75	50
75	51.	" " Hyslop,	1 00	75	50
75	52.	" " Any other variety,	1 00	75	50

PEARS.

75	53.	" " Bartlett,	1 50	1 25	1 00
75	54.	" " Belle Angevine,	1 50	1 25	1 00
75	55.	" " Beurre d'Anjou,	1 50	1 25	1 00
75	56.	" " " Bosc,	1 50	1 25	1 00
75	57.	" " " Grises,	1 50	1 25	1 00

SEC.		1st.	2nd.	3rd.
58.	One Dish of 15 Beurre Hardy,	1 50	1 25	1 00
59.	“ “ Duchesse d'Angouleme,	1 50	1 25	1 00
60.	“ “ Duchesse d'Bordeaux,	1 50	1 25	1 00
61.	“ “ Flemish Beauty,	1 50	1 25	1 00
62.	“ “ Frederick of Wortenburg,	1 50	1 25	1 00
63.	“ “ Josephine de Malines,	1 50	1 25	1 00
64.	“ “ Howell,	1 50	1 25	1 00
65.	“ “ Louise Bonne de Jersey,	1 50	1 25	1 00
66.	“ “ Onandago,	1 50	1 25	1 00
67.	“ “ Paradise d'Antonie,	1 50	1 23	1 00
68.	“ “ Seekel,	1 50	1 25	1 00
69.	“ “ Shelden,	1 50	1 25	1 00
70.	“ “ Souvenir de Congress,	1 50	1 25	1 00
71.	“ “ Sutton's Great Britain,	1 50	1 25	1 00
72.	“ “ Winter Nellis,	1 50	1 25	1 00
73.	Collection of Pears, correctly named, not less than 10 varieties,	6 00	5 00	4 00

PLUMS.

74.	1 Dish of 15 Bradshaw,	1 00	75	50
75.	1 “ Damson,	1 00	75	50
76.	1 “ Green Gage,	1 00	75	50
77.	1 “ Imperial Gage,	1 00	75	50
78.	1 “ Magnum Bonum,	1 00	75	50
79.	1 “ Lombard,	1 00	75	50
80.	1 “ Moore's Arctic,	1 00	75	50
81.	1 “ Pond's Seedling,	1 00	75	50
82.	1 “ Prince Claude de Bavay,	1 00	75	50
83.	1 “ Washington,	1 00	75	50
84.	1 “ Weaver,	1 00	75	50
85.	1 “ Yellow Egg,	1 00	75	50
86.	1 “ Any other variety,	1 00	75	50
87.	Collection of Plums—not less than 6 varieties,	1 00	75	50

QUINCES.

88.	1 Dish of 15, Orange,	1 50	1 25	1 00
89.	1 “ Apple,	1 50	1 25	1 00
90.	1 “ Pear,	1 50	1 25	1 00
91.	1 “ Any other variety,	1 50	1 25	1 00
92.	Collection, not less than 6 varieties, named	3 00	2 00	1 50

PEACHES.

	SEC.		1st.	2nd.	3rd.
3rd.					
1 00	93. 1	Dish of 15, Early Crawfords,	1 50	1 00	75
1 00	94. 1	" Mountain Rose,	1 50	1 00	75
1 00	95. 1	" Old Mixon,	1 50	1 00	75
1 00	96. 1	" Stump the World,	1 50	1 00	75
1 00	97. 1	" Any other variety grown in open air,	1 50	1 00	75
1 00	98. 1	" Any other variety grown under glass,	1 50	1 00	75
1 00	99.	Collection, not less than 6 varieties, grown in open air,	3 00	2 00	1 00
1 00	100.	Collection, not less than 6 varieties, grown under glass,	3 00	2 00	1 00

GRAPES—OPEN AIR.

4 00	101. 3	Bunches Agwan,	1 25	1 00	75
	102. 3	" Black Cluster,	1 25	1 00	75
	103. 3	" Concord,	1 25	1 00	75
	104. 3	" Delaware,	1 25	1 00	75
50	105. 3	" Diana,	1 25	1 00	75
50	106. 3	" Eumelan,	1 25	1 00	75
50	107. 3	" Hartford Prolific,	1 25	1 00	75
50	108. 3	" Isabella,	1 25	1 00	75
50	109. 3	" Niagara,	1 25	1 00	75
50	110. 3	" Rebecca,	1 25	1 00	75
50	111. 3	" Royal Muscadine,	1 25	1 00	75
50	112. 3	" Salem,	1 25	1 00	75
50	113. 3	" Sweet Water,	1 25	1 00	75
50	114.	Collection of open-air Grapes not less than 6 varieties not included in above list, correctly named,	3 00	2 00	1 50

GRAPES.—UNDER GLASS.

	115. 5	Bunches Black Hamburg,	3 00	2 00	1 00
	116. 3	" White Sweet Water,	3 00	2 00	1 00
	117. 3	" Any other variety,	3 00	2 00	1 00

NUTS.

1 00	118. 1	Dish Filberts,	1 25	1 00	75
1 00	119. 1	" Beach Nuts,	1 25	1 00	75
1 00	120. 1	" Butter Nuts,	1 25	1 00	75

Forbes' New Skate.

Perfection "ACHIEVED."



Requires no Fitting.

WARRANTED FIRST CLASS IN EVERY RESPECT.

THE FORBES MANUFACTURING CO., LTD.

GENERAL FINE MACHINISTS,

17, 19 and 21 Bedford Row, Halifax, N. S.

On your way to and from the Exhibition, don't forget to call at

DILLON BROS.,

Grocers, Wine and Spirit Merchants.

—IMPORTERS AND DEALERS IN—

FOREIGN AND DOMESTIC FRUITS

WHEN IN SEASON.

FIRST GRADE GOODS, ALWAYS FRESH, AT LOW PRICES.

80 SACKVILLE STREET, - - - HALIFAX, N. S.

TRURO, N. S.

WM. CUMMINGS & SONS,

WHOLESALE AND RETAIL MERCHANTS.

—SPECIALTIES:—

Dry † and † Fancy † Goods,

MILLINERY,

GENTS' FURNISHINGS.

Custom Tailoring for Ladies and Gentlemen.

DRESSMAKING AND MILLINERY.

By Experienced Workmen and Workwomen, on the Premises.

SAMPLES ON APPLICATION.

SEC.
121.
122.
123.
124.
125.
126.

(All

SEC.

1. C

2. C

3. C

4.

5.

6.

7.

8. 6

9. 3

10. 1

11. C

12.

13.

14.

15. C

16.

17.

18

19.

20.

21.

22.

23.

24.

CRANBERRIES.

SEC.		1st.	2nd.
121.	Dish of 25 Cherry	1 50	1 00
122.	“ Oblong	1 50	1 00
123.	“ True Cranberry	1 00	75
124.	“ Bog Berries	1 00	75
125.	“ Fox “	1 00	75
126.	Collection of not less than 6 varieties	3 00	2 00

Class 51.—Plants and Flowers in Pots.

(All Plants must be named and labelled, and shown in pots not exceeding 12 inches diameter, except large plants, which may be in tubs.)

SEC.		1st.	2nd.
1.	Collection of Plants and Flowers exhibited on a space of 50 square feet,	\$30 00	\$20 00
2.	Collection of Foliage and Ornamental Plants, not less than 12 varieties,	8 00	6 00
3.	Collection of Ferns, not less than 30 varieties,	10 00	8 00
4.	“ Geraniums, not less than 20 varieties,	8 00	6 00
5.	“ Fuchsias, “ 12 “	8 00	6 00
6.	“ Begonias, “ 20 “	10 00	8 00
7.	“ Lilliums, “ 20 “	5 00	3 00
8.	6 Ferns, Tree, distinct,	8 00	6 00
9.	3 “ “	5 00	3 00
10.	1 “ “	2 00	1 00

CUT FLOWERS.

11.	Collection of Dahlias, not less than 30 varieties,	10 00	8 00
12.	“ Gladiolus, not less than 25 varieties,	8 00	6 00
13.	“ Pansies, “ “	5 00	3 00
14.	“ Phlox Drummondii, not less than 12; 3 trusses each,	3 00	2 00
15.	Collection of Asters, not less than 12 varieties,	3 00	2 00
16.	“ Phlox Perennials, not less than 18 varieties,	3 00	2 00
17.	“ Holyhocks, not less than 10 varieties,	3 00	2 00
18.	“ Sweet Peas, not less than 8 varieties, 3 of each,	3 00	2 00
19.	“ Marigolds, not less than 10 varieties,	3 00	2 00
20.	“ Zinnias, not less than 12 varieties,	3 00	2 00
21.	“ Balsams, not less than 10 varieties,	2 00	1 00
22.	“ Lilliums, Spikes,	2 00	1 00
23.	“ Annuals, named, not less than 20 varieties,	3 00	2 00
24.	“ Petunias,	3 00	2 00

SEC.		1st.	2nd.
25.	Collection of Grasses, not less than 12 varieties, named, 3 of each,	4 00	3 00
26.	" Hardy Shrubs, named, a bunch of each,	5 00	3 00
27.	Bouquet, Hand, (in paper),	2 00	1 00
28.	" Bridal, "	2 00	1 00
29.	" Loose,	2 00	1 00
30.	Basket Cut Flowers for Lady,	2 00	1 00
31.	Bouquet of Wild Flowers	2 00	1 00

Class 55.—Ornamental Plants and Flowers in Pots.

(Nurserymen and Florists excluded.)

SEC.		1st.	2nd.
1. 6	Greenhouse Plants, distinct, in bloom, not elsewhere enumerated,	\$5 00	\$3 00
2. 6	Fine Foliage and Ornamental Plants, not elsewhere enumerated,	5 00	3 00
3. 3	Fine Foliage and Ornamental Plants, not elsewhere enumerated,	3 00	2 00
4. 6	Ferns (other than tree) distinct,	5 00	3 00
5. 3	" " "	3 00	2 00
6. 3	Chrysanthemums, in bloom, distinct,	2 00	1 00
7. 1	" " "	1 00	75
8. 6	Caladiums, distinct,	5 00	3 00
9. 3	" " "	3 00	2 00
10. 6	Geraniums, Double, distinct,	5 00	3 00
11. 3	" " "	3 00	2 00
12. 6	" Single, "	5 00	3 00
13. 3	" Bronze, "	3 00	2 00
14. 3	" Tricolor, "	3 00	2 00
15. 1	Geranium, Ivy, Double, in bloom,	2 00	1 00
16. 1	" " Variegated Leaf,	2 00	1 00
17. 6	Fuchsias, in bloom, distinct,	5 00	3 00
18. 3	" " "	3 00	2 00
19. 1	" " "	1 00	75
20. 6	Begonias, Shrubby, in bloom, distinct,	3 00	2 00
21. 3	" " " "	2 00	1 00
22. 6	" Tuberos, " double and single,	5 00	3 00
23. 3	" " " "	3 00	2 00
24. 3	" Rex,	3 00	2 00
25. 3	Salvias, in bloom, distinct,	2 50	2 00
26. 6	Coleus, "	4 00	3 00
27. 3	" " "	2 50	2 00

SEC.

28. 1

29. 1

30. 1

31. 1

32. 1

33. 3

34. 1

35. 6

36. 6

37. 6

38. 6

39. 6

40. 6

41. 3

42. 6

43. 6

44. 6

45. 6

46. 6

47. 6

48. 6

49. 6

50. 6

51. 6

52. 6

53. 6

54. 6

55. 6

56. 6

57. 1

58. 1

59. 1

60. Flo

61. 1 B

62. 1

PRIZE LIST—HORTICULTURAL DEPARTMENT.

77

	2nd.	SEC.	1st.	2nd.
	3 00	28. 1 Mignonette, Pyramid,	1 50	1 00
	3 00	29. 1 Heliotrope,	1 50	1 00
	1 00	30. 1 Trailing Plant in pot or basket,	1 00	75
	1 00	31. 1 Ivy, Hedera, Green Leaved,	1 50	1 00
	1 00	32. 1 " Variegated,	1 50	1 00
	1 00	33. 3 Liliams,	2 00	1 50
	1 00	34. 1 Liliam,	1 00	75

CUT FLOWERS.

		35. 6 Dahlias, Show, distinct,	2 00	1 00
	2nd.	36. 6 " Fancy, "	2 00	1 00
	\$3 00	37. 6 " Pompone, distinct,	2 00	1 00
	3 00	38. 6 " Carter's, "	2 00	1 00
	2 00	39. 6 " Single, "	2 00	1 00
	3 00	40. 6 Gladiolus, Spikes, "	2 00	1 00
	2 00	41. 3 " "	2 00	1 00
	3 00	42. 6 Pansies, " "	1 00	75
	2 00	43. 6 Phlox Drummondi, 3 trusses each,	1 00	75
	1 00	44. 6 Asters, distinct,	1 00	75
	75	45. 6 Phlox Perennial, distinct	1 00	75
	3 00	46. 6 Verbenas, 3 trusses each,	1 00	75
	2 00	47. 6 Roses, open air,	1 00	75
	3 00	48. 6 " under glass,	1 00	75
	2 00	49. 6 Hollyhock blooms,	1 00	75
	3 00	50. 6 Scabious, distinct,	1 00	75
	2 00	51. 6 Sweet Peas,	1 00	75
	2 00	52. 6 Marigolds, African and French, 3 of each,	1 00	75
	1 00	53. 6 Zinnias, distinct,	1 00	75
	1 00	54. 6 Carnations and Picotees, distinct,	1 00	75
	3 00	55. 6 Antirrhinums,	75	50
	2 00	56. 6 Balsam Spikes, distinct,	1 00	75
	75	57. 1 Bouquet, Table, tied,	2 00	1 00
	2 00	58. 1 " Side,	1 50	1 00
	1 00	59. 1 Basket Flowers and Fruit, not more than 18 inches in diameter,	3 00	2 00
	3 00	60. Floral Design for Table, one piece,	2 50	1 50
	2 00	61. 1 Bouquet, Dried Flowers tied,	1 50	1 00
	2 00	62. 1 " " and Grasses, tied,	1 50	1 00
	3 00			
	2 00			

CITY MUSIC STORE, 111 Granville Street, HALIFAX, N. S.

W. & A. GATES,

IMPORTERS AND DEALERS IN

Pianos, Church and Parlor Organs,
Music Stands and Stools, Accordions, Violins, Guitars, Banjos, and a full line of
all kinds of Musical Instruments.

SHEET MUSIC, MUSIC BOOKS, &C.

CATALOGUES FREE.

PIANOS AND ORGANS TUNED, REPAIRED AND ON HIRE.

Orders for Picture Frames taken.

Dressed Poultry, Provisions, &c.

COMMITTEE.

Messrs. Herbert Harris, Chairman; J. G. Bissett, George Clarke, M.P.P., W. J. Veith,
Aldenman Sanford, C. F. Lydiard, Alfred Saunders.

Class 56.—Special Prize.

(Offered by John Naylor, Esq., Real Estate Broker, Halifax.)

Sec.		1st.
1.	Best pair of dressed and trussed chickens hatched in 1891.....	\$5 00

NOTE.—The Judges, in awarding this prize, will take into account the manner in which the dressing has been done as well as the weight of chickens.

Class 57.—Provisions and Preserved Fruits, &c.

Sec.		1st.	2nd.
1.	Pair Ducks, dressed and trussed,	\$3 00	\$2 00
2.	One Goose, " "	3 00	2 00
3.	" Turkey, " "	3 00	2 00
4.	" Ham, home cured,	3 00	2 00
5.	" Side Bacon, home cured,	3 00	2 00
6.	Two loaves Home-made Bread,	3 00	2 00
7.	10 lbs. Maple Sugar,	2 00	1 50
8.	2 Glass Jars Preserved Cherries, N. S. Fruit,	2 00	1 00
9.	2 " " Plums, "	2 00	1 00
10.	2 " " Black Currants, "	2 00	1 00
11.	2 " " Red Currants, "	2 00	1 00
12.	2 " " Pears, "	2 00	1 00
13.	2 " " Grapes, "	2 00	1 00
14.	2 " " Quinces, "	2 00	1 00

Sec.
15. 5
16. 5
17. 3
18. 2
19. 2
20. 2
21. 2
22. 2
23. 2
24. 2
25. 1
26. 1
27. 1
28. 1
29. 1

M

Me
Edward
John P

Ag
of mach
farmer;
The
machine
nished w
Exh
In
awarded
competit
articles.

Sec.

1. Gra
2. Mo
3. Rea
4. Hor
5. Hay

Sec.		1st.	2nd.
15.	2 Glass Jars Preserved Peaches, N. S. Fruit,	2 00	1 00
16.	2 " " Crab Apples, "	2 00	1 00
17.	2 " " Strawberries, "	2 00	1 00
18.	2 " " Raspberries, "	2 00	1 00
19.	2 " " Blackberries, "	2 00	1 00
20.	2 " " Gooseberries, "	2 00	1 00
21.	2 Cans Preserved Tomatoes, "	2 00	1 00
22.	2 " " Corn, "	2 00	1 00
23.	2 " " Beans, "	2 00	1 00
24.	2 " " Peas, "	2 00	1 00
25.	10 lbs. Evaporated Apples, "	2 00	1 00
26.	10 " Potatoes, "	2 00	1 00
27.	10 " Carrots, "	2 00	1 00
28.	10 " Cabbage, "	2 00	1 00
29.	10 " Mixed Vegetables, "	2 00	1 00

Manufactures and Industrial Department.

AGRICULTURAL IMPLEMENTS.

COMMITTEE.

Messrs. John P. Longard, Chairman; A. B. Macdonald, John Forbes, W. J. Stuart, Edward Stairs, E. L. Fennerty, C. H. Potts, George Rent, William W. Howell, Alex. Moir, John Patterson, C. C. Longard.

Agricultural implements exhibited should be labelled with the name of exhibitor, name of machine, and the retail price, and should be the same in construction as those sold the farmer; not specimens got up for exhibition.

The Implement Building is fitted with shafting, so that exhibitors can show their machines in operation. Shaft turned to 27-16 inch gauge, speed per minute will be furnished when exhibitors make entries.

Exhibitors of engines driving shafting will be furnished with fuel free of charge.

In the Implement Department, at the request of manufacturers, no prizes will be awarded. Articles in this department will therefore be received for exhibition only, not in competition. They must however be entered with Secretary in the same manner as other articles.

Class 58.—Agricultural Implements.

Sec.

1. Grain and seed drills of all kinds.
2. Mowing machines.
3. Reaping machines.
4. Horse and steam-power threshers and separators.
5. Hay working implements.

X, N. S.
S,
gans,
full line of
RE.
&c.

W. J. Veith,

1st.
\$5 00
er in which

2nd.
\$2 00
2 00
2 00
2 00
2 00
2 00
1 50
1 00
1 00
1 00
1 00
1 00
1 00

HALIFAX LADIES' COLLEGE

—AND—

CONSERVATORY OF MUSIC.

This College and Conservatory is equipped in all its departments with a large and efficient Staff of Teachers from Universities and Colleges in Canada, United States, and Germany.

AUTUMN TERM BEGINS 9TH SEPTEMBER, 1891.

For Calendars and for information, apply to

REV. ROBERT LAING, M. A.,
HALIFAX, N. S.

H. H. HARRISON.

JAS. HARRISON.

JAMES HARRISON & CO.,

PAINTERS & DECORATORS,

Importers and Dealers in Wall Paper, Paints, Oils, Varnishes, Glass, &c.

Agents for the Canada Stained Glass Works and Canadian White Enamel Sign Co.

82 BARRINGTON STREET,

HALIFAX, N. S.

OSBORNE BLOIS,

Commission Merchant,

Millers' & Manufacturers' Agent,

94 UPPER WATER ST.,

HALIFAX, N. S.

Representing

THE TODD MILLING CO., Galt, Ont.—FLOUR, MIDDINGS.
THCS. TODD & SON, Galt., Ont.—FLOUR, GRAIN, MALT, &c.
N. K. FAIRBANK & CO., Chicago and Montreal.—LARD.
THE MACFARLANE MILLING CO., Sherbrooke, P. Q.—GRAIN, &c.
KEHLOR BROS., St. Louis, Mo.—FLOUR.
BOARDMAN BROS., Manchester.—RAILWAY WASTE.
GAINÉ, HARRISON & LARNER, London, Eng.—TEA, COFFEE, SPICES.
T. H. TAYLOR & CO., Chatham, Ont.—FLOUR.

SEC.
6.
7.
8.
9.
10.
11.
12.
13.
14.
15.
16.
17.
18.
19.
20.
21.

Al
Edwar
John P
AB
steam p
Th
must p
The
given to
All
ation at
In
to be th
of manu

Class
M
v

SEC.
i. Sta

- SEC.
6. Fanning mills.
 7. Portable grist mills.
 8. Grain and corn crushers and grinders.
 9. Horse powers of all kinds.
 10. Machines for pulping and cutting roots.
 11. Straw cutters.
 12. Steam ploughs and cultivators.
 13. Iron and wooden ploughs of all kinds.
 14. Horse hoes and cultivators.
 15. Iron and wood harrows.
 16. Iron and wood land rollers.
 17. Ensilage corn cutter and elevator.
 18. Potatoe diggers.
 19. Portable engines for agricultural purposes.
 20. Traction engines
 21. Manure drills, stump extractors, corn shellers and planters, cider mills and presses, and all other machines and implements used for agricultural purposes.

Engines and Machinery, &c.

COMMITTEE.

Messrs. John P. Longard, Chairman; Alex. B. Macdonald, John Forbes, W. I. Stewart, Edward Stairs, E. L. Fennerty, C. H. Potts, George Rent, W. W. Howell, Alex. Moir, John Patterson, C. C. Longard.

All machinery in motion, except portable, must be exhibited in Machinery Hall, spare steam power and shafting for which is furnished free of charge.

The main shafting in this Hall must not be interfered with or taken apart. Exhibitors must provide themselves with split pulleys.

The shafting is turned to 2 $\frac{1}{16}$ inch gauge; speed: the revolutions per minute will be given to exhibitors when making their entries.

All machinery in this building must be placed in motion, and, if possible, kept in operation at regular work.

In response to inquiries made of the leading manufacturers of the Province, it appears to be the opinion of a very large majority that prizes should not be offered in the general line of manufactures, and no prizes will therefore be awarded in this department.

Class 59. Engines, Wood and Iron Working Machinery, Mill Machinery, Fire and Service Pumps, Railway Pumps, Railway Appliances, etc.

SEC. Steam Engines and Connections.

1. Stationary steam engines and connections, and parts thereof, steam hammers, road engines, etc.

W. & A. MOIR,
Mechanical Engineers and Machinists,
AND DEALERS IN AND IMPORTERS OF
Mill, Mining, Steamship and Engineers' Supplies,
210, 212 & 214
Barrington St., - HALIFAX, N. S.

— MANUFACTURERS OF —

**Marine & Stationary Steam Engines, Steam Pumps,
 Steam Hammers, Marine Spring Safety Valves.
 Hoist and Power Elevators.**

And all kinds of Mill and Mining Machinery made and repaired; Hangers, Pulleys and Shafting a specialty; Brass and Iron Castings of every description.

AGENTS FOR: The Metropolitan Automatic Boiler Feeder; The Common Sense Steam Flue Cleaner; The Waters' Engine Governor; The "Vulcan" and "Leffel" Turbine Water Wheels; "Magnolia," the best anti-friction metal known.

SEC.

Wood-Working Machinery.

2. Wood-working machinery of every description.

Iron-Working Machinery.

3. Iron-working machinery of all descriptions, emery wheels, grinders, etc.

Machines for Flour Mills.

4. Mill machinery and appliances of all descriptions.

Machines for Saw Mills.

5. Portable saw mills in operation, saw mill machinery, and tools for same.

Fire and Service Pumps.

6. Fire engines, portable and stationary, steam and hand; fire extinguishers; pumps, wind, steam and power; well force and cistern pumps, etc.

Machines for Miscellaneous Purposes.

7. Boot and shoe-making machinery, brick machines, hoists and other machinery not coming under the headings of previous sections.

Railway and Street Car Appliances.

8. Locomotives, passenger cars, street cars, headlights, couplings, car springs and other railway appliances.

Sec.
9.SEC.
1.
2.SEC.
1.
2.
3.4.
5.

7.

8.

9.
10.

11.

SEC.

1. G

2. P

3. T

4. S

5. S

SEC.

1. L

Class

SEC.

1. St

SEC.

1. Sp

2.

3.

Telegraph and Telephone.

Sec.

9. Fire alarm telegraph, telegraphic instruments, telephones, and telegraph and telephone supplies.

Class 60.—Safes and Scales.

SEC.

1. Fire and burglar proof safes, vault doors and bank lock combinations.
2. Counter and platform scales.

Class 61.—Hardware Tools and Cutlery, &c.

SEC.

1. Table and other cutlery razors, &c.
2. Fire arms and sporting goods.
3. Bells, skates, fishing rods, sporting lines and appliances.
4. Cut and pressed nails, screws, bolts, rivets and washers.
5. Machinists' and mechanical engineers' tools.
6. Tinsmiths' and ironworkers' tools.
7. Edge tools, saws and chopping axes.
8. Spades, hoes, picks, shovels, &c.
9. Hay, manure and other forks, and agricultural tools.
10. Seythes and lawn mowers.
11. Locks and keys, files, horse shoes, and other manufactured iron work, &c.

Class 62.—Gas Fixtures and Wire Work, &c.

SEC.

1. Gas and kerosine fixtures of all kinds.
2. Plumbers' and engineers' brass work.
3. Tinsmiths' work, tinware and wire work, &c.
4. Sanitary ware and appliances.
5. Ships' brass work, composition and copper work, roller block bushings, &c.

Class 63.—Metal Work.

SEC.

1. Lead pipes, lead shot, sheet lead, sheet brass work, sheet zinc work, copper-smiths' work, &c.

Class 64.—Goldsmiths' and Silversmiths' Work, Jewellery, &c.

SEC.

1. Sterling silver, flat and hollow ware, electro-plated ware, nickel-plated ware, etc.; medals, gold and silver chains, lockets, bracelets, necklets; ladies' and gents' gold suites; watches, clocks, diamond setting, gold and silver leaf, &c.

Class 65.—Skilled Mechanical Work.

SEC.

1. Specimen of workmanship by mechanics.
2. " " apprentices.
3. " " amateurs.

Established 1820.

NOVA SCOTIA BREWERY.

HALIFAX, N. S.

A. KEITH & SON, Proprietors.

Celebrated XX and XXX Ales and Extra Stout in Casks of 15 Gals.,
20 Gals., Half Hhds and Hhds.

—ALSO IN BOTTLE, QUARTS AND PINTS.—

Carefully packed in Bbbs. when required, each barrel containing 4 doz. Quarts or
8 doz. Pints.

Class 66.—Stoves, Ranges, &c.

SEC.

1. Heating and cooking stoves and ranges, all patterns and sizes.
2. Parlour grates, portable and stationary; hot air furnaces, steam and hot water heating apparatus, hot water boilers, coal oil stoves, gas stoves, etc.

Class 67.—Castings, Holloware, etc.

SEC.

1. Iron castings of all kinds, monuments, fountains, registers and ventilators, cresting, fencing, car and other wheels; castings for building purposes and bridge works, and railway cars and locomotives; plain and enamelled hollow-ware; cast iron, stable fittings, &c., &c.

Class 68.—Sewing Machines, &c.

SEC.

1. Sewing machines, all kinds and sizes.
2. Knitting machines, all kinds and sizes.

Class 69.—Paints, Oils, &c.

SEC.

1. Oxides, ochres and ochery earths ground or underground, washed or unwashed, calcined or raw, and all other dry colours.
2. Paints or colours pulped or ground in oil or other liquids, and all ready mixed paints.
3. Japan, vaanish, lacquers, liquid driers, collodion, oil finish, or other varnishes.
4. Oils,—lubricating, lard, linseed, raw or boiled; cod, seal, and other fish oils, and oils for manufacturing purposes.

Miscellaneous Manufactures.

COMMITTEE.

Messrs. Alex. Stephen, Chairman; Alderman Allen, Robert Taylor, Jos. R. Henderson, E. J. Bolton, A. Lamphier, Wm. M. Doull, Arthur Silver, John M. Dewolf, C. H. Mackinlay, W. J. Clayton, Charles S. Lane.

In response to inquiries made of the leading manufacturers of the Province, it appears to be the desire of a very large majority that prizes should not be offered in the general line of manufactures; and therefore no prizes will be awarded in this Department.

It is recommended that the entries should embrace a full assortment of each kind of article exhibited, the display made as extensive as possible, and the goods arranged in an artistic and attractive manner.

Early application should be made for space.

Class 70.—Gates and Fencing.

SEC.

1. Specimen of farm and other fencing.
2. Common and self-acting farm and other gates.

Class 71.—Engine Hose and Rubber Goods.

SEC.

1. Engine hose, leather and rubber; rubber and leather belting, and rubber goods of every description.

Class 72.—Refrigerators.

SEC.

1. Refrigerators for family, butcher's, brewers' or grocers' use, etc.

Class 73.—House Furnishing Goods.

SEC.

1. Washing machines, mangles, clothes wringers, bird cages, cinder sifters, cornices, and other house furnishing goods.
2. Corn brooms, brushes of all kind.
3. Hollow wooden-ware, wash tubs, pails, children's toys, children's waggons, and sleighs, and other wooden goods.

Class 74.—Sails, Tents, Bunting, &c.

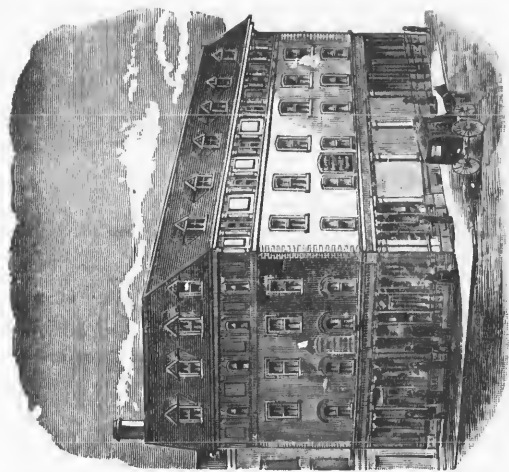
SEC.

1. Sails for vessels, bunting, tents, camp bedstead and equipage.

Class 75.—Trunkmakers' Work.

SEC.

1. Trunks, valises, saddle bags, dressing cases, travelling cases, and other similar goods.



J. & M. MURPHY,

IMPORTERS AND WHOLESALE DEALERS IN

FOREIGN AND DOMESTIC

Dry Goods,

Millinery and Fancy Goods.

Cor. Duke and Granville Sts.
HALIFAX, N. S.

Class 76.—Furniture and Upholstery.

SEC.

1. Furniture of all kinds: drawing-room, dining-room, and bed-room suites; office furniture; chairs, tables, mantels, and over-mantels; pier and mantel mirrors; bed-bottoms and mattresses; wall pockets and brackets, upholstering, etc.

Class 77.—Building Material and Work.

SEC.

1. Machine made doors, sashes and Venetian blinds and shutters; machine wrought mouldings, stair newels and other wood-work for building purposes, etc.

Class 78.—Fire Escapes, Diving Apparatus, Life Preservers, Ship and Yacht Models, Boats and Appliances.

SEC.

1. Fire escapes to be shown in operation.
2. Diving dress and appliances.
3. Life boat and appliances.
4. Life preservers.
5. Life-saving raft.
6. Models of merchant ships and fishing vessels.
7. " yachts and appliances.
8. Pleasure boats and skiffs.
9. Racing boats and skiffs.
10. Sculls, oars, paddles.
11. Collection of ship blocks.
12. " " wheels.
13. " mast hoops.
14. Extra.

Class 79. Leather, Boots, Shoes, and Shoemakers' Tools.

SEC.

1. Assortment of men's, women's, and children's boots and shoes, machine or hand-made, either for custom or wholesale trade.
2. Prepared calf-skins, sheep-kids, and cowhides; sheepskin linings, glove kids: cordovan leather; leather for belting; sole leather, upper leather, upholsterers' leather; harness leather; leather for carriage work, and all other kinds of leather used for manufacturing purposes.
3. Boot and shoemakers' lasts and trees, pegs, nails, rivets, &c.

Class 80.—Harness and Saddlery Material.

SEC.

1. Harness, carriage (double and single); heavy draught or express harness (double and single); saddles, stirrups, whips, &c.: check for horse collars: horse blankets: kerseys for horse clothing, &c.

Class 81.—Glassware, Earthenware, &c.

SEC.

1. Stained glass for churches or domestic purposes; embossed glass, bevelled glass, window and mirror glass, and all other descriptions of glassware.
2. Decorated stoneware and earthenware, white graniteware, cream-colored ware, stoneware, Rockingham ware, redware, and pottery.

Class 82.—Bookbinding, Printing and Stationery.

SEC.

1. Bookbinding (blank book and letter press), in all styles of leather and cloth: pocket-books, wallets and fancy leather goods.
2. Letter-press printing: job printing—bill heads, letter-heads, cards, legal forms, posters—plain, colored or ornamental.
3. Mill-board and straw-board, writing, printing and blotting papers: paper bags, wrapping paper, wood pulp, &c.
4. Printing types, electrotyping, stereotyping, rubber and metal stamps, &c.
5. Specimens of paper-ruling.
6. Printing and writing inks, black or coloured.
7. Lithographic work, plain and in colours, show cards, &c.
8. Penmanship, business and ornamental.
9. Designs for wall papers, oil cloths, book covers, cabinet work or stained glass windows.
10. Illuminated addresses.
11. Anatomical models for art schools.

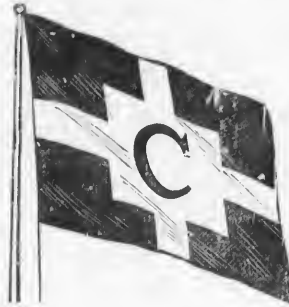
Class 83.—Paper-Hangings, Shades, &c.

SEC.

1. Printed paper-hangings: flock, marble, and veined paper, &c.: varnished and enamelled paper, imitation of wood and leather: paper-hangings in decorations, window shades and blinds painted and printed, &c.

CANADA ATLANTIC STEAMSHIP LINE
FOR BOSTON.

SHORTEST
 AND MOST
 DIRECT ROUTE.



ONLY
 ONE
 NIGHT
 AT SEA!

The fast steel Clyde-built **SS. "HALIFAX"** sails from Halifax for Boston EVERY WEDNESDAY at 8 a. m.; Boston to Halifax every SATURDAY at noon.

Cheap through tickets, and baggage checked from all principal stations on Intercolonial Railway, and at Company's Office, Noble's Wharf, Halifax.

RICHARDSON & BARNARD, AGENTS,
 20 Atlantic Avenue, Boston.

H. L. CHIPMAN, AGENT,
 Halifax.

Class 84.—Musical Instruments.

SEC.

1. Organs, cabinet, parlor and church.
2. Pianos, grand, square and upright.
3. Band instruments, brass, reed and stringed.
4. Drums and other musical instruments of all kinds.

Class 85.—Hair Work.

SEC.

1. Collection of ladies' and gents' hair goods, hair jewelry, &c.

Class 86.—Philosophical and Surgical Instruments & Appliances.

SEC.

1. Mathematical and surgical instruments.
2. Optical instruments, including microscopes, &c.
3. Chemical apparatus and glassware, collection of.
4. Artificial limbs, trusses and orthopedic appliances.
5. Surgical instruments, collection of.
6. Models of inventions.
7. Electro-Therapeutic appliances.
8. Dental instruments and appliances, collection of.

SEC.

1.

2.

3.

4.

SEC.

1.

2.

3.

4.

5.

6.

7.

8.

9.

10.

11.

12.

13.

14.

15.

SEC.

1. H

2. O

3. G

4.

5.

6.

7.

8. I

9.

10.

11.

12. R

Class 87.—Woolen Goods.

SEC.

1. Blankets, rugs, druggets, flannels, shawls, winceys, and yarns of all kinds.
2. Cassimeres, broadcloth, doeskins, homespuns, naps, pilots, beavers, coatings, tweeds, serges, and other worsted cloth.
3. Knitted Cardigan jackets ; men's, ladies' and children's shirts and drawers ; men's, ladies' and children's hose and half-hose ; gloves, mits and gaiters ; Nubians, scarfs and shawls.
4. Carpets—union, wool, tapestry, Brussels and Wilton.

Class 88.—Cotton Goods.

SEC.

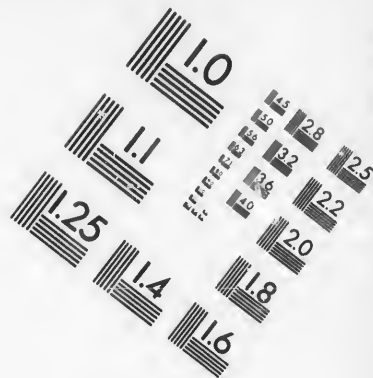
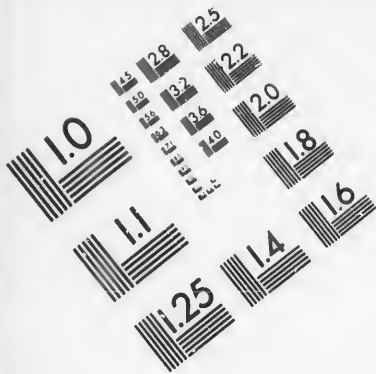
1. Cotton sheetings, bleached and unbleached.
2. Counterpanes, white and colored.
3. Ducks and denims.
4. Gingham, plain and fancy.
5. Shirtings, striped and fancy.
6. Tickings, striped and checked.
7. Prints, assortment of.
8. Cotton flannels, bleached and unbleached.
9. Apron checks and permanent linings.
10. Twill pocketings.
11. Jeans.
12. Brown Hollands, dressed.
13. Muslins, plain and fancy.
14. Warps, beam and carpet.
15. Yarns, white and colored ; knitting cotton, etc.

Class 89.—Wearing Apparel.—Nova Scotia Manufacture.

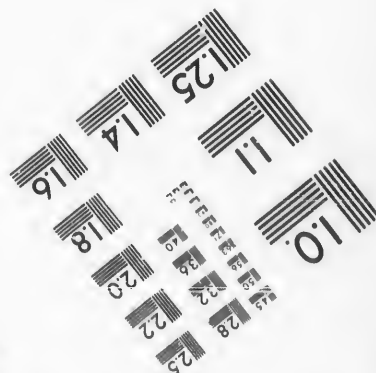
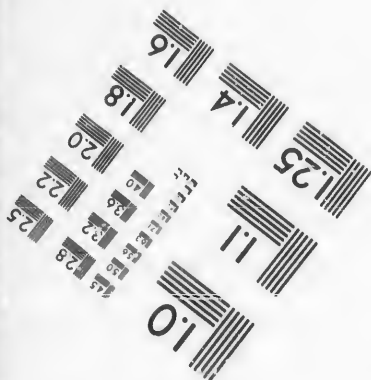
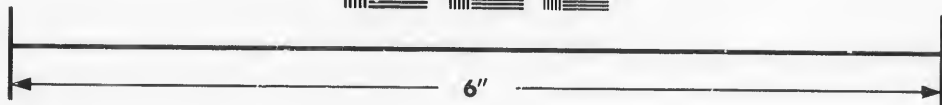
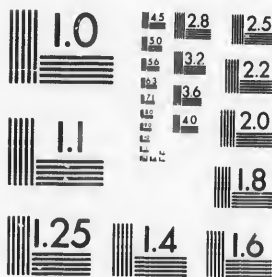
SEC.

1. Hats and caps of cloth, felt and silk.
2. Overcoats.
3. Gentlemen's and boys' suits.
4. " white and fancy nannel shirts.
5. " white dress shirts, cotton and linen.
6. " collars and cuffs.
7. " ties and scarfs.
8. Ladies' bonnets and hats,
9. " mantles and jackets.
10. " and children's cotton underwear.
11. " corsets.
12. Re-dyed goods in silk and wool.





**IMAGE EVALUATION
TEST TARGET (MT-3)**



**Photographic
Sciences
Corporation**

23 WEST MAIN STREET
WEBSTER, N.Y. 14580
(716) 872-4503



FARMER'S HOTEL,

Corner Buckingham & Argyle Sts., Halifax, N. S.

HARRY GRAY PROPRIETOR.,

FIRST CLASS RESTAURANT

In connection, under the supervision of an experienced Caterer. Meals and Lunches at all hours.

Stabling Capacity for Forty Horses.

Class 90.—Flax and Hemp.

SEC.

1. Ships' cordage.
2. Fishing lines and twines.
3. Bags.

Class 91.—Furs.

SEC.

1. Ladies' and gentlemen's furs of all kinds.
2. Sleigh robes, rugs, etc.
3. Overcoats made from the pelts of Nova Scotia fur-bearing or domestic animals.

Class 92.—Chemical Manufactures, Pharmaceutical Preparations, &c.

SEC.

1. Soap, laundry and toilet.
2. Gelatine and Glue, assortment of.
3. Condensed milk.
4. Cider vinegar.
5. Ales and stout.
6. Cordials and syrups.
7. Native wines.
8. Canned fish, and fish preserved in oil.
9. Canned meats.
10. Shoe blacking and leather dressings.
11. Pharmaceutical preparations.
12. Toilet and perfumery requisites, assortment of.
13. Fruit flavoring essences and extracts from Nova Scotia fruit.
14. Fluid extracts of medicinal herbs grown in Nova Scotia.

Carriage Department.

Committee.

Messrs. A. Stephen, Chairman; Alderman Allen, Robt. Taylor, Joseph R. Henderson, E. J. Bolton, A. Lamphier, Wm. M. Donll, Arthmr Silver, John M. DeWolf, C. H. Mac kinlay, W. J. Clayton, Charles S. Lane.

Exhibitors in this department must confine their entries to one vehicle in each section, as space will only be granted to that extent.

All applications for space should be sent in by 15th August.

Exhibitors are requested to attach to their exhibits neat cards stating the selling price of each vehicle.

Class 93.—Carriages, Waggon and Sleighs.

SEC.		1st.
1.	Brougham,	\$25 00
2.	Landau,	25 00
3.	Victoria,	20 00
4.	Carryall, or Coupe Rockaway,	20 00
5.	Barouche,	20 00
6.	Waggonette,	15 00
7.	Double Waggon, with doors and turn under,	15 00
8.	T-Cart,	15 00
9.	Top Buggy,	15 00
10.	Park Pony Phaeton,	15 00
11.	Light Road Waggon,	12 00
12.	Open Waggon, two seats,	12 00
13.	Four wheel Dog Cart,	12 00
14.	Two wheel Dog Cart,	10 00
15.	Flat Waggon, four wheels,	10 00
16.	Light Express Waggon, single,	10 00
17.	Double Sleigh,	10 00
18.	Tandem Sleigh,	10 00
19.	Single Sleigh,	10 00

THE ARMY AND NAVY BREWERY.

S. OLAND, SONS & CO.,
Brewers & Maltsters,

ALSO BOTTLERS OF

XX, XXX INDIA PALE

AND

FAMILY ALES AND EXTRA STOUT.

English Table Beer, in Casks and
 Bottled.

HALIFAX, N. S.

WORKS: TURTLE GROVE, DARTMOUTH.

HEAD OFFICE, 243 HOLLIS STREET, HALIFAX.

Branch Offices: 44 Water Street, St. John, N. B.
 " " 51 Water Street, Charlottetown, P. E. I.
 " " Cor. Bridge and Trafalgar Streets, Bridgetown,
 Barbadoes.
 " " Kingston, Jamaica.

Class 94.—Indian Work.

SEC.		1st	2nd.
1.	Miniature Indian canoe	4 00	2 00
2.	Nest of Indian worked boxes	3 00	2 00
3.	Pair of bead worked moccasins	3 00	2 00
4.	Squaw's head dress	3 00	2 00
5.	Pair home-made snow-shoes	3 00	2 00
6.	Best assortment of market and clothes baskets	3 00	2 00
7.	Best assortment of ladies' work baskets	3 00	2 00
8.	Best bow and half-dozen arrows	} 3 00	2 00
	“ half-dozen white ash shovel handles		
	“ half-dozen horn-beam shovel handles		
9.	Best lady's chip hat	3 00	2 00

Natural History and Educational Department.**COMMITTEE.**

Messrs. Robert Taylor, Chairman; Dr. Allison, Dr. James G. McGregor, Dr. George Lawson, Dr. Martin Murphy, C. E., Alderman Sweet, George Harvey, Alex. McKay, Supervisor of Schools, Robert Wilson.

Class 95.—Economic Minerals and Ores of Nova Scotia.

SEC.		
1.	Collection of gold specimens	Diploma.
2.	“ nickel ores,	“
3.	“ lead and silver ores,	“
4.	“ copper ores,	“
5.	“ manganese ores,	“
6.	Exhibit of mica in mass and large sheets, with locality where found,	“
7.	Collection of iron ores,	“
8.	“ gypsum, crude and calcined,	“
9.	“ marbles, rough and polished,	“
10.	“ clays and sands suitable for pottery, moulding, and glass making,	“

Class 96.—Birds, Insects, Plants.

Specimens must be the personal property of the exhibitor, and must not have been exhibited in Halifax before.

SEC.	1st.	2nd.	3rd.
1. Collection of specimens of taxidermy (birds or mammalia, or both), labelled with English and scientific names,	\$10 00	\$8 00	
2. Collection of stuffed birds or mammalia, or both; the work of lady taxidermists,	10 00	8 00	
3. Collection of insects related to agriculture, pomology, and gardening. The common and scientific name of each specimen to be given. This collection to be in two divisions; one consisting of insects destructive to vegetation; and the other of those beneficial. Each division correctly and conspicuously labelled,	10 00	8 00	5 00
4. Collection of dried specimens of the forage plants of Nova Scotia,	5 00	3 00	
5. Collection of dried specimens of agricultural weeds of Nova Scotia,	5 00	3 00	

Educational.

Open only to pupils of Art, High, Collegiate and Common Schools, Ladies' Seminaries, Academies and Colleges.

Class 97.—Collective Exhibits.

SEC.	1st, 2nd and 3rd	Diplomas.
1. For best collection of Copy Books, Drawing Books, Maps, Models in Clay and Paper, and Business Forms, also Sewing, and any other products of manual work from the <i>Common Schools</i> ,	1st, 2nd and 3rd	Diplomas.
2. Best collection of Business Forms, Drawing Books, Paintings, Cabinets of Natural History Specimens, and Scientific Apparatus, from the High Schools and Academies of Nova Scotia,	1st and 2nd	Diplomas.
3. Best collection exhibit of pupils' art work from Art Schools, Ladies' Colleges, Seminaries, and Colleges	Diploma.

Class 98.—For Common School Manual Work.

Sec.		1st.	2nd.]
	1. Com. Sch. Grade I. (a) Samples of writing or printing. (b) Drawing. (c) Modelling in clay. (d) Paper-work, each	30 cts.	15 cts.
	2. Com. Sch. Grade II. (a) Samples of writing. (b) Drawing. (c) Modelling in clay. (d) Paper forms. (e) Representation of school room, each	30 cts.	15 cts.
	3. Com. Sch. Grade III. (a) Copy book No. 1. (b) Drawing. (c) Modelling in clay. (d) Paper forms. (e) Map of the county in which the pupil lives. (f) Sewing suitable for grade, each	30 cts.	15 cts.
	4. Com. Sch. Grade IV. (a) Copy books 2 and 3. (b) Modelling in clay. (c) Drawing. (d) Map of Nova Scotia. (e) Sewing suitable for grade, each	50 cts.	25 cts.
	5. Com. Sch. Grade V. (a) Copy books 4 and 5. (b) Drawing. (c) Modelling in clay. (d) Map of Dominion. (e) Sewing suitable for grade, each	50 cts.	25 cts.
	6. Com. Sch. Grade VI. (a) Copy books 6 and 7. (b) Drawing. (c) Modelling in clay. (d) Map of North America or South America. (e) Sewing suitable for grade, each	75 cts.	50 cts.
	7. Com. Sch. Grade VII. (a) Copy books 6 and 7. (b) Drawing. (c) Modelling in clay. (d) Map of Europe. (e) Sewing suitable for grade. (f) Handcraft, each	70 cts.	50 cts.
	8. Com. Sch. Grade VIII. (a) Copy book No. 9 for boys, No. 10 for girls. (b) Drawing. (c) Modelling in clay. (d) Map of British Islands with counties. (e) Sewing for grade. (f) Handcraft, each	\$1 00	75 cts.

Class 99.—Natural History.

Sec.		1st.	2nd.
	1. Best collection of Native Minerals,	\$5 00	3 00
	2. " of Minerals,	5 00	3 00
	3. " of Economic Ores, Stones, Earths,	5 00	3 00
	4. " illustrating Nova Scotia Lithology,	5 00	3 09
	5. " " Paleontology,	5 00	3 00
	6. " of Grasses and Sedges,	2 00	1 00
	7. " of Non-flowering Plants,	5 00	3 00
	8. " of Insects,	5 00	3 00
	9. " Insects affecting N. S. Industries,	5 00	3 00
	10. " illustrating Osteology of N. S. Animals,	4 00	2 00
	11. " Nova Scotia Shells,	3 00	2 00
	12. " Nova Scotia Wood showing bark and with transverse and two longitudinal sections dressed,	2 00	1 00

J. B. NEILLY & CO.'S

—ASSORTMENT OF—

Waggons, Carts, Harnesses, and Bicycles.

Surpasses all others of the same kind in the city. There you will find the celebrated "Gladstone," Jump Seat, "Kensington," various kinds of Phaetons and Buggies, Single and Double Seated Waggons, Dickey Seat Waggons, Express Waggons, etc., etc.

CARTS: Tilbury, Village, Hill, and various other styles of Road Carts.

HARNESSES: Silver, Brass, Nickel, Solid Nickel, Rubber, Japan mounted, and various other kinds of Single and Double Harnesses.

BICYCLES: The Ladies' Favorite, the Brantford Safety, Brantford No. 1 Safety, Brantford No. 2 Safety, The Brantford Light Roadster, Brantford No. 1, Brantford National Light Roadster, The Brantford No. 1 National.

All goods are warranted to give satisfaction, and persons requiring to purchase any of these goods will find it to their advantage to call and inspect J. B. NEILLY & CO.'S stock before purchasing.

Class 100—Chemical and Physical.

SEC.		1st.	2nd.
1.	Best set of Chemical Apparatus, home-made,	\$5 00	\$3 00
2.	“ Physical “	5 00	3 00
3.	“ Electro-Magnetic Apparatus, home-made,	5 00	3 00
4.	Best collection of Salts, Starches, Salt Crystals, &c.,	1 00	75
5.	“ of Etchings,	1 00	75
6.	“ Common and Microscopic Photographs,	3 00	2 00

Class 101.—Drawings and Designs.

SEC.		1st.	2nd.
1.	Drawing from the "Round":		
	(a) Outline drawing from a Cast,	\$2 00	\$1 00
	(b) Shaded “	2 00	1 00
2.	Monochrome, in Oil or Water Colors:		
	From a Cast,	2 00	1 00
3.	Modelling:		
	In Relief from the "Round,"	2 00	1 00
4.	Painting, Oil or Water Colors, direct from Nature:		
	(a) Of Flowers or Still-life,	2 00	1 00
	(b) Of Landscapes or Views of Buildings,	4 00	2 00
	(c) From Life,	4 00	2 00
5.	Sculpture:		
	(a) In Marble from a Cast,	3 00	2 00
	(b) “ Life,	4 00	2 00
6.	Linear Perspective:		
	Drawing from a group of Solid Forms,	2 00	1 00

SEC.		1st.	2nd.
7.	Wood Carving:		
	(a) From a Drawing,	2 00	1 00
	(b) From an Original Design,	4 00	2 00
8.	Design:		
	Ornamental Design as applied to Decorative or Industrial Art,	5 00	3 00
9.	Geometrical and Mechanical Drawing:		
	(a) Practical Geometry. For a set of 36 drawings on three sheets of paper, to include, erecting perpendiculars, constructing angles, triangles, parallelograms and squares; finding centre of circle; finding tangent to a circle; constructing polygons; joining circles of different diameter; finding centre of circle to be tangent to two right lines and tangent to each other, &c., &c.,	4 00	2 00
	(b) Principles of Draughting. Working drawings, showing plan and elevation, development and intersection of surfaces. This includes the finding the true form of opening made by the intersections,	4 00	2 00
	(c) Drawing from Models,	4 00	2 00
	(d) Drawing from Copies,	4 00	2 00
	(e) Machine Design	5 00	3 00

BUILDING CONSTRUCTION AND ARCHITECTURAL DRAWING.

		1st.	2nd.
10.	(a) Set of 12 drawings of details of building construction,	\$5 00	\$3 00
	(b) Copy of plan and elevation of a house,	5 00	3 00
	(c) Original plan for a dwelling house,	5 00	3 00
	(d) Original design of elevations for a dwelling house,	5 00	3 00
	(e) Perspective drawing of an original design,	5 00	3 00

N.B.—Exhibits in Sections 1 to 8, inclusive, to be original work and not copied from the "flat," except division (a) in section 7.

133 Barrington Street,

Between St. Paul's Church and the Parade,

HALIFAX, N. S.

WILLIAM CROWE,

Importer and Dealer in Berlin Wools, Yarns, Fleecies, and all
kinds of Ladies' Fancy Work and Materials.

Agency for MME. DEMOREST'S PATTERNS for Ladies' and Children's Garments.

Ladies' Department.

All articles competing in this department must be the work of the exhibitor.

Articles which have been awarded prizes at former exhibition cannot be entered in competition for the premiums named in this list.

Any exhibitor may be required to make a statutory declaration that the work exhibited is of her own workmanship.

Class 102.—Domestic Goods.

SEC.		1st.	2nd.
1.	8 yards Woollen Cloth, dressed and fulled	\$5 00	\$3 00
2.	8 " " twilled, undressed	5 00	3 00
3.	8 " Women's Wear, plain	5 00	3 00
4.	8 " " fancy pattern	5 00	3 00
5.	5 " White Flannel, all wool	4 00	2 00
6.	5 " " cotton and wool	4 00	2 00
7.	1 pair Blankets, all wool	4 00	2 00
8.	1 Hearth Rug, native wool	5 00	3 00
9.	1 " rag	5 00	3 00
10.	1 Carpet, all wool	6 00	4 00
11.	1 " rag	5 00	3 00
12.	2 pair Men's Wool Socks	2 00	1 00
13.	3 " Women's Stockings, wool	2 00	1 00
14.	2 " Men's Wool Mitts, plain	2 00	1 00
15.	2 " " fringed	2 00	1 00
16.	2 " Men's Wool Gloves	2 00	1 00
17.	5 lb. Knitting Yarn, wool, (white)	2 00	1 00
18.	5 lb. " (grey).. .. .	2 00	1 00

A. M. JACK.

H. H. BELL.

W. L. LOWELL & CO.,

ESTABLISHED 1860.

Bankers and Brokers,

STOCKS AND BONDS BOUGHT AND SOLD.

Loans Negotiated for Towns and Municipalities.

SPECIAL ATTENTION GIVEN TO INVESTMENTS.

ALSO—

AGENTS FOR

Etna Insurance Co., of Hartford, Conn., Assets	\$10,457,497
Hartford Fire Insurance Co., of Hartford, Conn., Assets	6,576,616
North British and Mercantile Insurance Co., of Edinburgh and London, Assets	59,376,064

165 Hollis Street, - - - - HALIFAX, N. S.

H. B. CLARKE,

Agent * Maritime * Steam * Lithographic * Co.,

—AND—

GENERAL ADVERTISING AGENT.

Latest Designs in Advertising Cards & Novelties.

SEC.		1st.	2nd.
23.	Seed flowers,	3 00	2 00
24.	Dressed doll,	3 00	2 00
25.	Darned net sofa tidy,	3 00	2 00
26.	Specimen crochet lace,	3 00	2 00
27.	“ Limerick lace,	5 00	3 00

H. H. BELL.

O.,

kers,

OLD.

ipalities.

rs.

\$10,457,497

6,576,616

59,376,064

X, N. S.

ic * Co.,

T.

ovelties.

1st. 2nd.

3 00 2 00

3 00 2 00

3 09 2 00

3 00 2 00

5 00 3 00

INDEX TO PRIZE LIST.

	PAGE.
Officers and Directors	3
Rules and Regulations	5
HORSES:	
Thoroughbred or Blood	21
Standard or Trotters	21
Carrriage and Saddle	21
Clydesdale	23
Fercherons	23
English Shire	23
Suffolk Punch	25
Harkney	25
Cleveland Bay	25
Draught, Heavy	25
" Agricultural	25
Shetland	27
Tandems	27
Licensed Hacks	27
" Trucks	27
CATTLE:	
Galloways	29
Durhams or Shorthorus	31
Ayrshires	31
Devons	31
Jerseys	33
Guernseys	33
Herefords	35
Polled Suffolk or Red Polls	35
West Highland	35
Polled Angus	37
Holstein	37
Dairy, Grade	39
Working	39
Fat	39
SHEEP:	
Cotswolds	41
Leicesters	41
Shropshires	41
Southdowns	43
Oxford Downs	43
Hampshire Downs	43
Lincoln	43
Merinos	43
Fat	43
SWINE:	
Berkshire	45
Yorkshire, large	45
Suffolk	47
Essex	47
Crosses, &c.	47
POULTRY:	
Fowl and Chickens	49-53
Ducks and Ducklings	53
Geese and Goslings	53-55
Turkeys and Poults	55

	PAGE.
Pigeons	55
Canaries	55
Parrots	55
Doves	55
Pheasants	56
Dogs and Pups	56-58
Butter	58-59
Cheese	59
Honey and Apiary Supplies	61
Field Grain	92-93
Small Field Seeds	63
Grain Manufactures	64
Field Roots	64-65
Special Prizes—Potatoes	65
Garden Vegetables	67-69
Fruit	70-75
Plants and Flowers	75-77
Special Prize—Dressed Poultry	78
Provisions and Preserved Fruits	78-79
Agricultural Implements	80-81
Engines and Machinery	81-82
Hardware, Tools, and Cutlery	83
Metal Work, Gas Fixtures, &c.	83
Goldsmith, Silversmith Work, and Jewellery	83
Stoves, Ranges, Castings	84
Sewing Machines	84
Paints and Oils	84
Hose and Rubber Goods	85
Refrigerators	85
House Furnishing Goods	85
Trunks, &c.	85
Furniture, Upholstery, &c.	86
Fire Escapes and other Life-saving Appliances	86
Ship Models, &c.	86
Leather, Boots, Shoes, &c.	87
Harness, Saddlery, &c.	87
Glassware, Earthenware, &c.	87
Bookbinding and Printing	87
Paper Hangings	87
Woollen Goods	89
Cotton Goods	89
Wearing Apparel	89
Flax and Hemp	90
Furs	90
Chemical Manufactures	90
Carriages	91
Indian Work	93
Economic Minerals	93
Birds, Insects, Plants, &c.	94
EDUCATIONAL :	
Collective Exhibit	94
Manual Work Common Schools	95
Natural History	95
Chemical and Physical	96
Drawing and Designs	96
LADIES' DEPARTMENT :	
Domestic Work	98
Fancy Work	99

PAGE.

55
55
55
55
56
56-58
58-59
59
61
92-63
63
64
64-65
65
67-69
70-75
75-77
78
78-79
80-81
81-82
83
83
83
84
84
84
85
85
85
86
86
86
87
87
87
87
89
89
90
90
90
91
93
93
94
94
95
95
96
96

INDEX TO ADVERTISEMENTS.

PAGE.

Bani's, H. H.	36
Barnstead & Sutherland	38
Bavarian Lager Beer Brewery	10
Bell, A. M.	17
Bigelow, J. E. & Co.	60
Bishop, Wm.	26
Blois, Osborne.	80
Boston, Halifax & P. E. Island S.S. Co.	42
Bras d'Or Stearn Navigation Co.	104
Brown Bros. & Co.	6
Brown, M. S. & Co.	54
Canada & Atlantic S. S. Co.	88
Citizens' Insurance Co.	54
Clarke, H. B.	100
Claymore	44
Coleman	40
Creighton, C. E. & Co.	69
Crowe, Wm.	98
Cunningham & Curran	24
Cummings, W. & Sons.	74
DeWolf Son & Co.	8
Downie & Larsen	26
Donovan, W. H.	32
Duggan, Jas. & Sons	42
Dillon Bros.	74
Eastern Ins. Co.	30
Equitable Life Ins. Co.	14
Farmer's Hotel, H. Grey ...	90
Forbes Mfg. Co., "Limtd."	74
Gatz, W. & A.	79
Gordon & Keith	2
Grace, Gastonguay	14
Grant, A. J. & Co.	26
Halifax Hotel (H. Hesslien & Sons)....	60
Halifax Ladies' College	80
Halifax Sugar Refinery	104
Harrison, James & Co.	80
Kelly, Jno. F.	69
Kelly & Glassy	34
Keith, A. & Son	84
Lane, C. S.	42
La Salle Academy	39

PAGE.

Le Bon Marehe.	8
Lowell, W. L. & Co.	100
Mackintosh, James C.	40
Macnab, William	59
Mahon Bros.	22
Maxwell, E. & Son	16
Methodist Book-Rooms	47
Miller Bros.	22
Moir, A. & W.	82
Moir, Son & Co.	18
Mott, Jno. P. & Co.	4
Morse, J. E. & Co.	46
Murphy, J. & M.	86
Murray, F. M.	12
Neilly, J. B. & Co.	96
New England Paper Co.	46
Notman, Wm.	32
Oland, S. Son & Co.	92
Peters, Jno. & Co.	28
Power & Co.	30
Reidden Bros.	34
Roche, David	38
Roue, James	14
St. James' Billiard Hall	16
Schulze, C. G.	32
Scott, James & Son	32
Silver, W. & C.	12
Smith Bros.	66
Smith, J. Godfrey.	48
Smith & Power.	26
Starr, Jno.	47
Starr Mfg. Co.	54
Taylor, Wm. Co.	30
Temple, W. L.	46
Thorne, W. H. & Co.	20
Western Ins. Co.	32
Wetherbee & Co.	27
Woodill's Baking Powder	36
Woolmough, Chas.	36

Those to whom this book may be sent are respectfully requested, when they have finished with it, to hand it to some neighbour who will be likely to make an exhibit.

Manufacturers cannot find a better, cheaper or readier means of introducing their wares to the public, or of keeping them before their patrons, than by making a display at the Nova Scotia Provincial Exhibition. Judging from the attendance at former Exhibitions, it is calculated that not less than 100,000 people will attend this Fair.

HALIFAX SUGAR REFINERY, -Lt'd.,

GRANULATED AND YELLOWS

ARE PURE

NEITHER BLUEING NOR ACIDS USED
IN THE MANUFACTURE.

WOODSIDE BRAND.

CAPE BRETON.

The Bras d'Or Steam Navigation Company, Ltd.

STEAMERS "MARION," "NEPTUNE," "MAY QUEEN,"
"MAGNOLIA," AND "PEERLESS."

Mail Line. . . Summer Arrangements.

These Steamers leave Port Mulgrave, in connection with the Intercolonial Railway Trains, tri-weekly for Sydney, and daily for St. Peter's, making connection with all parts of Canada and United States.

Passing through Lennox Passage and the St. Peter's Canal into the Bras d'Or Lake, celebrated for its beautiful scenery, these Steamers call at Whyecomagh, Baddeck, East Bay, and other Lake Ports, terminating at Sydney, C. B. Returning, they leave Sydney at 3 P.M., arriving next morning in time to connect with train bound west at Port Mulgrave.

The attention of Tourists is specially directed to this route, the scenery being unsurpassed, and the country full of historic associations.

The Steamers are fast and well found. Good staterooms and excellent table.

J. W. GORHAM & CO., Gen'l Agents, Halifax, N. S.

G. L. BURCHELL, Agent, Sydney, C. B.

WM. STAIRS, SON & MORROW,

HALIFAX, N. S.

Carry the Largest and Most Assorted Stock of

HEAVY
AND
SHELF

HARDWARE!

SHIP CHANDLERY AND FISHING SUPPLIES

OF ANY HOUSE IN NOVA SCOTIA.



HAVE LATELY ADDED A FULL STOCK OF

Fittings, Valves, W. C. Pipe, Galvanized Pipe,

PLUMBERS' GOODS,

AND

SANITARY WARE, BATHS, SINKS, GALVANIZED BOILERS, ETC.



VISITORS TO THE EXHIBITION CALLING AT WAREHOUSES,

174 TO 190 LOWER WATER STREET,

WILL BE WELCOMED.



The Nova Scotia Furnishing Co. Ltd.

CAPITAL
\$150,000.00

SUCCESSORS

BUY FROM THE
LARGEST
MANUFACTURERS
AND
IMPORTERS.
BEST GOODS
LOWEST PRICES

Complete House Furnishers

FURNITURE, CARPETS,

Oilcloths, Draperies &



SEND FOR CATALOGUE OR VISIT OUR SHOWROOMS
101, 103, BARRINGTON ST. HALIFAX, N.S.

...SPICES &

SHOWROOMS

...ON ST. HALIFAX, N.S.



