

**CIHM
Microfiche
Series
(Monographs)**

**ICMH
Collection de
microfiches
(monographies)**



Canadian Institute for Historical Microreproductions / Institut canadien de microreproductions historiques

© 1998

Technical and Bibliographic Notes / Notes techniques et bibliographiques

The Institute has attempted to obtain the best original copy available for filming. Features of this copy which may be bibliographically unique, which may alter any of the images in the reproduction, or which may significantly change the usual method of filming are checked below.

- Coloured covers / Couverture de couleur
- Covers damaged / Couverture endommagée
- Covers restored and/or laminated / Couverture restaurée et/ou pelliculée
- Cover title missing / Le titre de couverture manque
- Coloured maps / Cartes géographiques en couleur
- Coloured ink (i.e. other than blue or black) / Encre de couleur (i.e. autre que bleue ou noire)
- Coloured plates and/or illustrations / Planches et/ou illustrations en couleur
- Bound with other material / Relié avec d'autres documents
- Only edition available / Seule édition disponible
- Tight binding may cause shadows or distortion along interior margin / La reliure serrée peut causer de l'ombre ou de la distorsion le long de la marge intérieure.
- Blank leaves added during restorations may appear within the text. Whenever possible, these have been omitted from filming / Il se peut que certaines pages blanches ajoutées lors d'une restauration apparaissent dans le texte, mais, lorsque cela était possible, ces pages n'ont pas été filmées.
- Additional comments / Commentaires supplémentaires:

L'Institut a microfilmé le meilleur exemplaire qu'il lui a été possible de se procurer. Les détails de cet exemplaire qui sont peut-être uniques du point de vue bibliographique, qui peuvent modifier une image reproduite, ou qui peuvent exiger une modification dans la méthode normale de filmage sont indiqués ci-dessous.

- Coloured pages / Pages de couleur
- Pages damaged / Pages endommagées
- Pages restored and/or laminated / Pages restaurées et/ou pelliculées
- Pages discoloured, stained or foxed / Pages décolorées, tachetées ou piquées
- Pages detached / Pages détachées
- Showthrough / Transparence
- Quality of print varies / Qualité inégale de l'impression
- Includes supplementary material / Comprend du matériel supplémentaire
- Pages wholly or partially obscured by errata slips, tissues, etc., have been refilmed to ensure the best possible image / Les pages totalement ou partiellement obscurcies par un feuillet d'errata, une pelure, etc., ont été filmées à nouveau de façon à obtenir la meilleure image possible.
- Opposing pages with varying colouration or discolourations are filmed twice to ensure the best possible image / Les pages s'opposant ayant des colorations variables ou des décolorations sont filmées deux fois afin d'obtenir la meilleure image possible.

This item is filmed at the reduction ratio checked below /
Ce document est filmé au taux de réduction indiqué ci-dessous.

10x	14x	18x	22x	26x	30x
<input type="checkbox"/>	<input type="checkbox"/>	<input type="checkbox"/>	<input checked="" type="checkbox"/>	<input type="checkbox"/>	<input type="checkbox"/>
12	16x	20x	24x	28x	32x

The copy filmed here has been reproduced thanks to the generosity of:

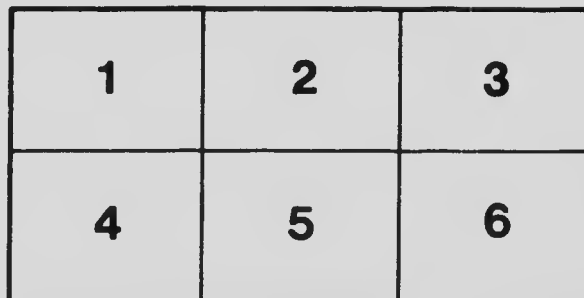
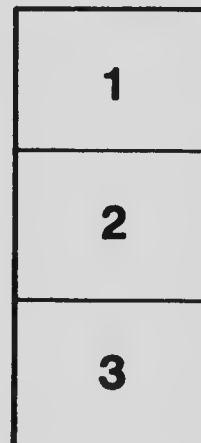
Bibliothèque nationale du Québec

The images appearing here are the best quality possible considering the condition and legibility of the original copy and in keeping with the filming contract specifications.

Original copies in printed paper covers are filmed beginning with the front cover and ending on the last page with a printed or illustrated impression, or the back cover when appropriate. All other original copies are filmed beginning on the first page with a printed or illustrated impression, and ending on the last page with a printed or illustrated impression.

The last recorded frame on each microfiche shall contain the symbol \rightarrow (meaning "CONTINUED"), or the symbol ∇ (meaning "END"), whichever applies.

Maps, plates, charts, etc., may be filmed at different reduction ratios. Those too large to be entirely included in one exposure are filmed beginning in the upper left hand corner, left to right and top to bottom, as many frames as required. The following diagrams illustrate the method:



L'exemplaire filmé fut reproduit grâce à la générosité de:

Bibliothèque nationale du Québec

Les images suivantes ont été reproduites avec le plus grand soin, compte tenu de la condition et de la netteté de l'exemplaire filmé, et en conformité avec les conditions du contrat de filmage.

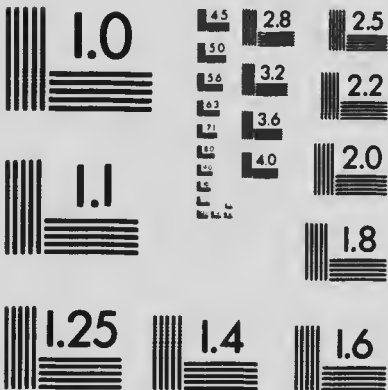
Les exemplaires originaux dont la couverture en papier est imprimée sont filmés en commençant par le premier plat et en terminant soit par la dernière page qui comporte une empreinte d'impression ou d'illustration, soit par le second plat, selon le cas. Tous les autres exemplaires originaux sont filmés en commençant par la première page qui comporte une empreinte d'impression ou d'illustration et en terminant par la dernière page qui comporte une telle empreinte.

Un des symboles suivants apparaîtra sur la dernière image de chaque microfiche, selon le cas: le symbole \rightarrow signifie "A SUIVRE", le symbole ∇ signifie "FIN".

Les cartes, planches, tableaux, etc., peuvent être filmés à des taux de réduction différents. Lorsque le document est trop grand pour être reproduit en un seul cliché, il est filmé à partir de l'angle supérieur gauche, de gauche à droite, et de haut en bas, en prenant le nombre d'images nécessaire. Les diagrammes suivants illustrent la méthode.

MICROCOPY RESOLUTION TEST CHART

(ANSI and ISO TEST CHART No. 2)



APPLIED IMAGE Inc

1653 East Main Street
Rochester, New York 14609 USA
(716) 482 - 0300 - Phone
(716) 288 - 5989 - Fax

PER
2 6668

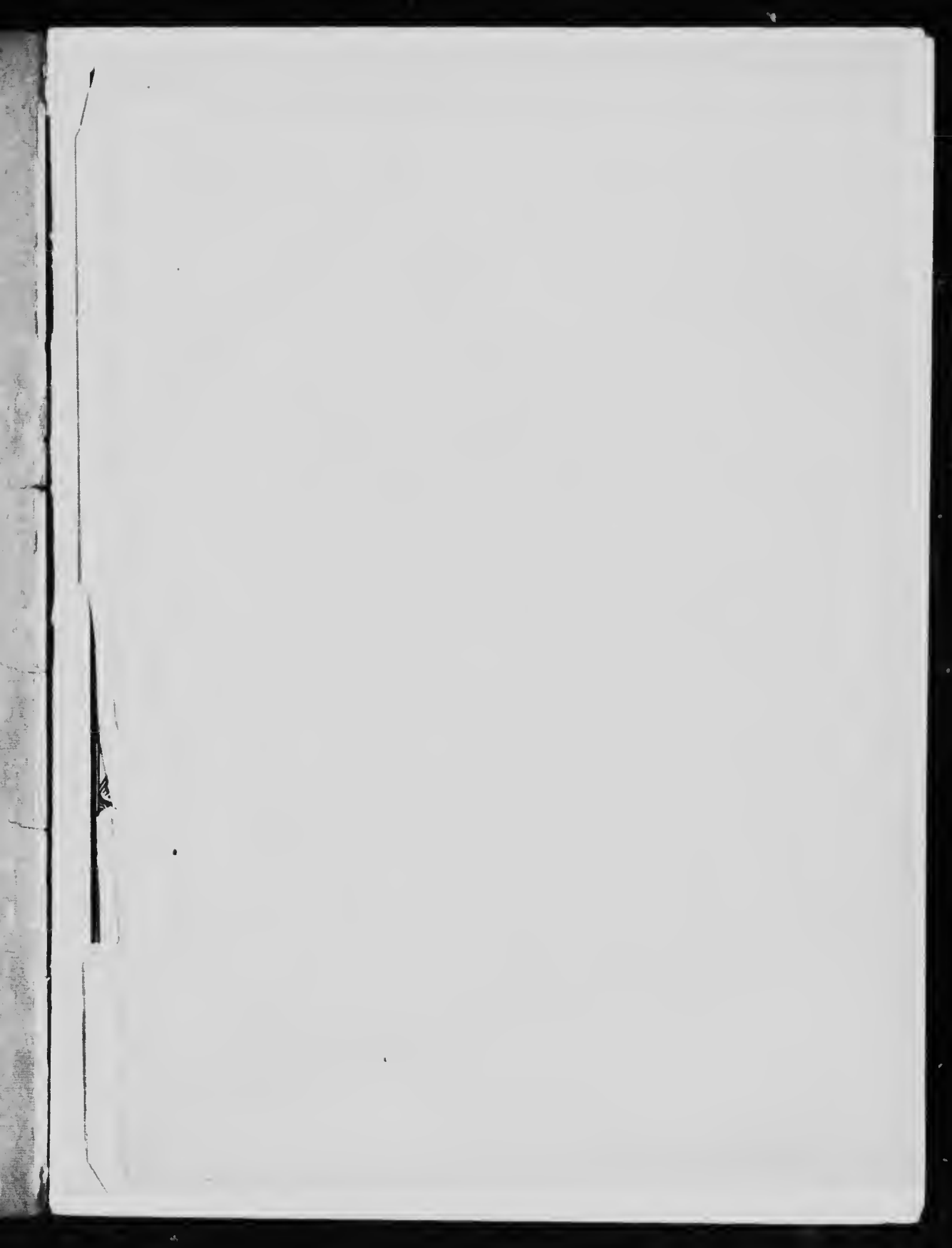
MONTREAL

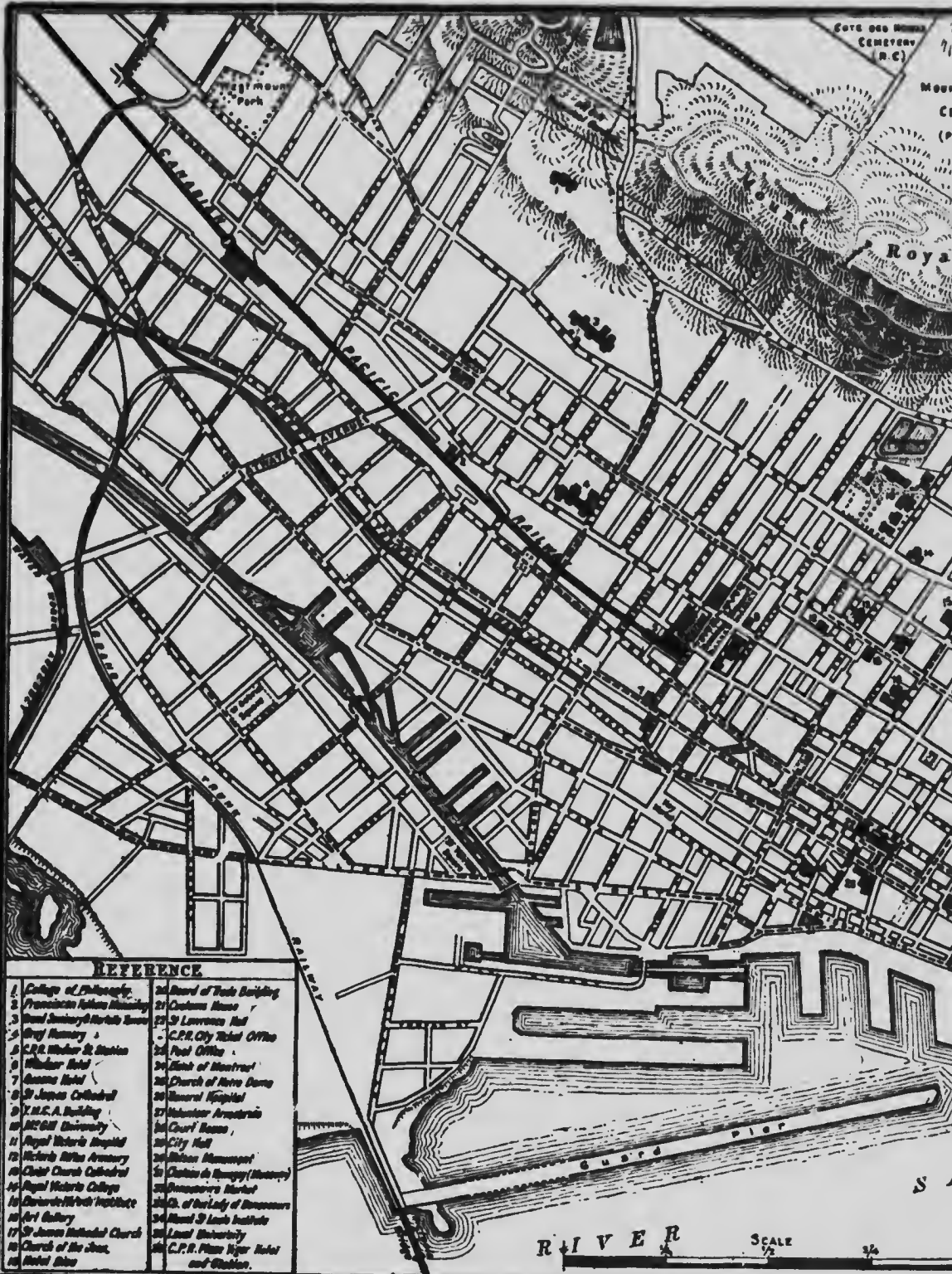
THE CANADIAN METROPOLIS AND
ITS PICTURESQUE ENVIRONMENTS



PL 281

M. 188 pc





REFERENCE

1 College of Philosophy	24 Board of Trade Building
2 Protestant Reform Monastery	25 Customs House
3 Bond Depository	26 St. Lawrence Hall
4 Gray Monastery	27 C.P.R. City Ticket Office
5 C.P.R. Market St. Station	28 Post Office
6 Auditor Hotel	29 Bank of Montreal
7 Racine Hotel	30 Church of Notre Dame
8 St. James Cathedral	31 General Hospital
9 Y.M.C.A. Building	32 Volunteer Armistice
10 M.C.M. University	33 Court House
11 Royal Victoria Hospital	34 City Hall
12 Nichols Villa Asylum	35 Indian Museum
13 Christ Church Cathedral	36 Captain de Stuyvesant (Museum)
14 Royal Victoria College	37 Annunciation Market
15 Bernardine Work Institute	38 G. of Our Lady of Rosaries
16 Art Gallery	39 Grand St. Louis Institute
17 St. James Methodist Church	40 Local University
18 Church of the Jews	41 C.P.R. Plaza Hotel
19 Hotel Dieu	42 and Station.

RIVER

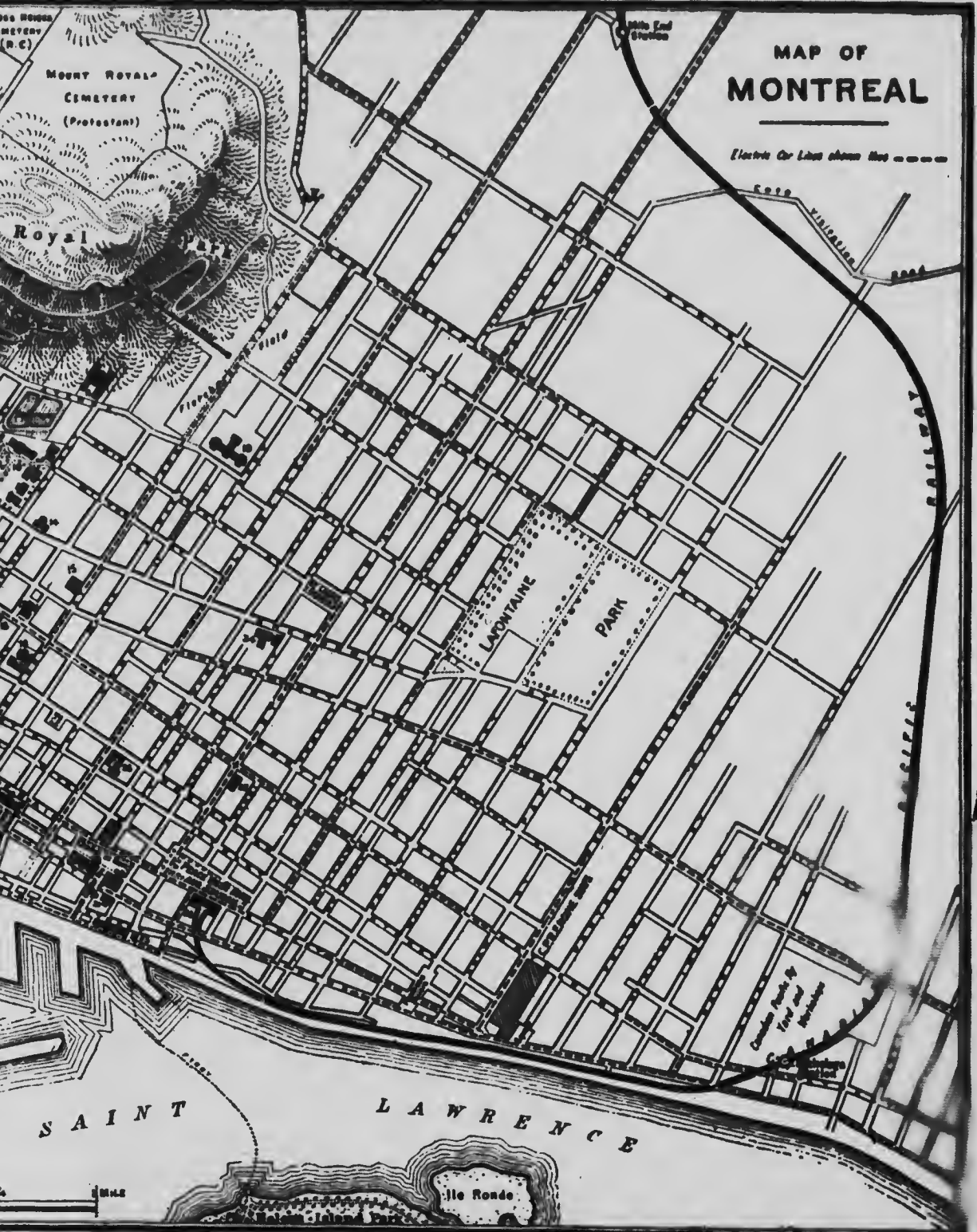
SCALE

1/2

S

MAP OF MONTREAL

Electric Car Lines shown thus -----



MOUNT ROYAL
CEMETERY
(Protestant)

Royal

Mile End
Station

MONTAIGNE

PARK

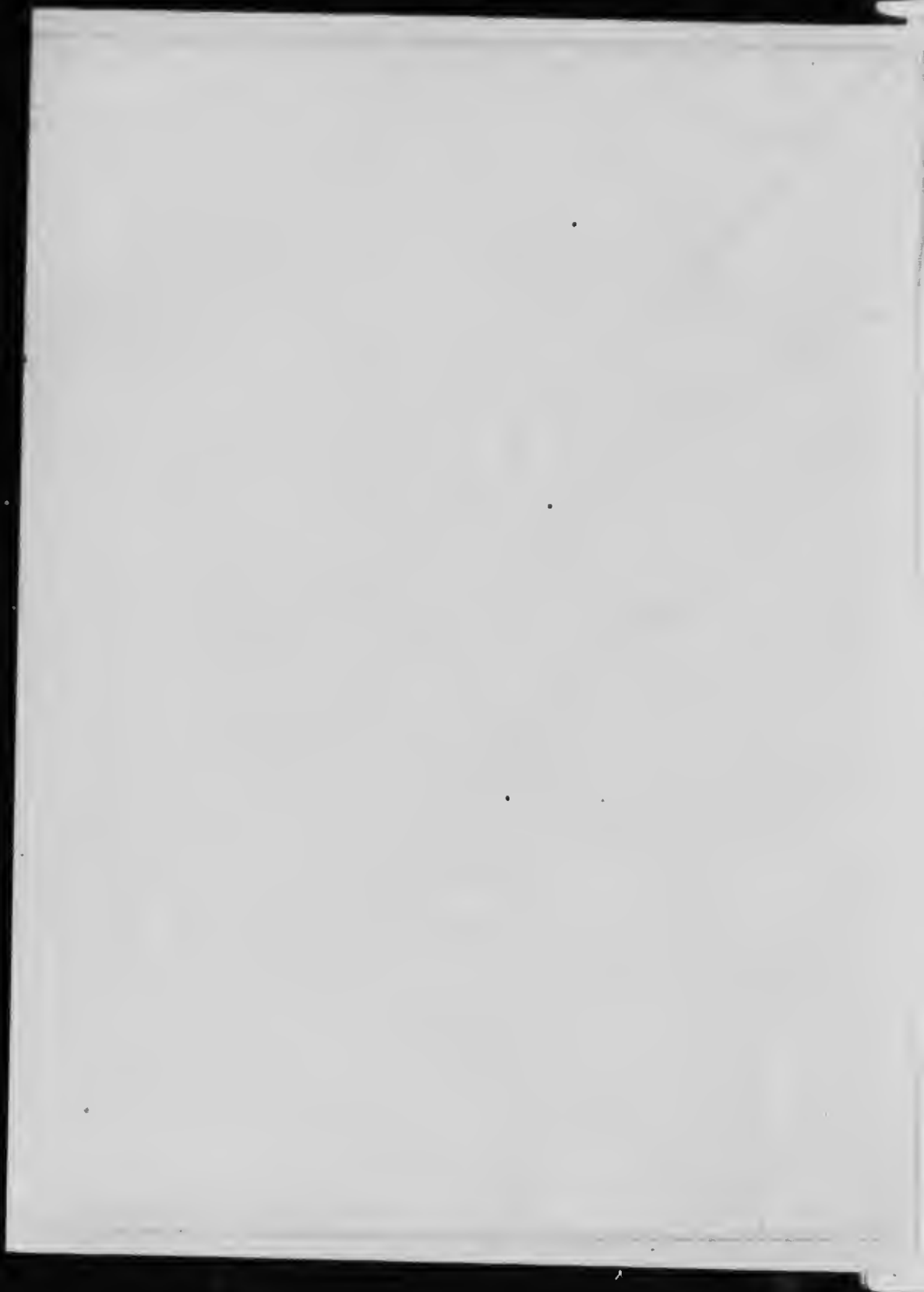
RAILWAY

SAINT

LAWRENCE

Ile Ronde

Scale



MONTREAL

The Canadian Metropolis and
the Country Thereabout



NINTH EDITION

ISSUED BY THE
CANADIAN PACIFIC RAILWAY COMPANY
1904





City of Montreal from Mount Royal



Montreal

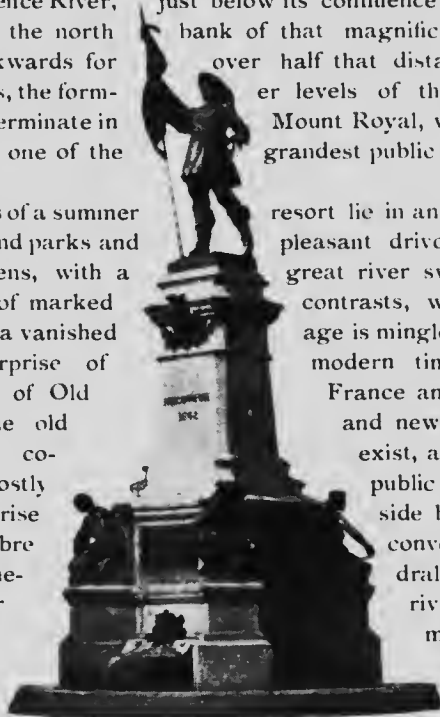
Canada's
Metropolis

And one of its
GREAT SUMMER RESORTS

AMONGST all the cities on the North American Continent, there are none fairer or more attractive to the tourist than Montreal, the great Canadian Metropolis. The city is delightfully located on an island in the St. Lawrence River, just below its confluence with the Ottawa, and stretches along the north bank of that magnificent waterway for five miles and backwards for over half that distance, being built on a series of terraces, the former levels of the river or of an ancient lake, which terminate in wooded slopes form one of the grandest public pleasure grounds on the continent.

All the attractions of a summer resort lie in and about Montreal. It is a city of trees and parks and pleasant drives, in a land of orchards and gardens, with a great river sweeping along its front. It is a city of marked contrasts, where the picturesque quaintness of a vanished age is mingled with the luxury of modern times; where the culture and enterprise of Old France and Young Canada, and new eras of civilization, harmoniously co-exist, and where massive business blocks, costly public buildings and private residences rise side by side with grey old churches, sombre convents and nunneries and grand cathedrals, whose splendour and magnificence rival those of the old world. It is a modern, metropolitan city—an important seaport, although 600 miles from the Atlantic by the St. Lawrence, with huge ocean greyhounds at its busy docks

—a bustling, thriving commercial and industrial centre, where converge the principal railways of Canada, chief of which is the Canadian Pacific, which, stretching across the continent from the Atlantic to the Pacific, is the longest continuous railway line in the world.



Maisonneuve Monument

59450

The summer temperature of Montreal makes it one of the few cities of the larger size in which people may live with comfort during the warmer months, the heat not being enervating as in more southern latitudes.

An Historic Spot

Montreal is among the half-dozen historic cities of North America, where lingers that subtle charm, which only the glamour of an eventful past can bestow. When Jacques Cartier first visited the island in 1535, he found the



Sherbrooke Street

palisaded Indian village of Hochelaga, whose very existence disappeared from all record, and whose site was utterly unknown until a few years ago, when some remains of the aboriginal inhabitants were accidentally discovered in the heart of the upper part of the city. The illustrious Champlain, the first Governor of Canada, came in 1611, and established a trading post, which he named Place Royale, on the site of the present Custom House; but it was not until May 18th, 1642, that the city was founded by a band of gallant adventurers, composed of the flower of France, who planned a town to be known as Ville-Marie de Montreal. The leader of the expedition and the Governor of

the colony was the soldier Maisonneuve, whose memory is perpetuated in bronze in one of the historic spots of the city, where he gallantly met and vanquished his Indian foe. The old streets of Montreal are redolent with legends of a turbulent past—of wars with the fierce and wily aborigine, of French adventure and enterprise—for here dwelt the intrepid La Salle (the



Bonsecours Church

Mississippi explorer), Du L'Hut (the founder of Duluth), Cadillac (the founder of Detroit), Bienville (the founder of New Orleans), and other adventurous spirits whose names are still revered by posterity. Ville-Marie, was, too, the headquarters of the great French fur-trading and exploring companies, whose operations throughout the great west extended to the foot-hills of the Rocky

Mountains and the far-off shores of Hudson Bay. It remained under the rule of France until 1760, when Vaudreuil capitulated to General Amherst and the ancient regime came to an end. Three years later, by the treaty of Paris, France ceded Canada to Great Britain, and the French Canadians became British subjects. The town was occupied for a time, in 1775, by the Americans, under General Montgomery, who afterwards was slain in a gallant but unsuccessful assault upon Quebec, and here in the old Chateau de Ramezay, the home of the old Governors, lived Benjamin Franklin, Samuel Chase and Rev. Charles Carroll, the American commissioners who came to negotiate the



Royal Victoria Hospital

cession of the country to the United States. During the war of 1812-15, Montreal was threatened by invading United States forces, but fortunately its walls were not entered by the enemy.

Since that time the development and progress of the city have been continuous and rapid, until it now possesses, with its suburbs, a population of over 360,000, two-thirds of whom are French Canadians, and boasts a wealth equalled by no other city of its size in the world.

Montreal's Parks and Squares

The city is adorned by numerous beautiful parks and squares, among them two that are most picturesque - The Mount Royal Park and St. Helen's Island. Pleasant drives wind around the mountain, from which the city

derives its name, and lead to the summit, from which there is a glorious panorama of a rarely-placed city and the broad valley of the St. Lawrence, through which the gleaming river flows to the sea. Beyond are the peaks of Belcœil, rising abruptly from the plain, eastward of which the Green Mountains of Vermont can be distinguished on a clear day. To the distant south are the famed Adirondacks, and along the north run the Laurentians, which claim precedence in antiquity over the rest of the earth's mountains. The park is intersected by numerous walks and driveways through shady ravines and over grassy slopes, and from the varying heights, garbed in pines and maples and bedecked with ferns and wild flowers, magnificent views are obtainable.

The Place Viger Hotel

Facing the picturesque Place Viger square is the new Place Viger Hotel, erected by the Canadian Pacific Railway Company—a late addition to its chain of magnificent hotels, which extends from Quebec to Vancouver, and includes,



Dominion Square

amongst others, those charming resorts in the mountains of British Columbia—Banff, Field, the Great Glacier, Revelstoke, Sicamous and North Bend. This imposing structure occupies an historic site. The authoress of "Famous Firesides of French Canada" in her description of this memorable place, says:

"Few visitors to this city, as the palace cars of the Canadian Pacific Railway carry them into the mammoth station on Viger Square, realize the historic associations which cling around this spot. In the magnificently equipped dining-room of the Company's hotel, as delicacies from the most distant parts of the earth are laid before the traveller, he should call to

remembrance the lives of deprivation and uncomplaining endurance which have made the ground now crowned by the beautiful edifice full of the most tragic interest and filled with memories which will be immortal as long as courage and stout-heartedness are honored.

"Two hundred and fifty years ago the sound of hammer and saw here awoke the echoes of the forest. Workmen who had learned their craft in old French towns, when Colbert the great statesman and financier, was developing the architecture and industries, revenues and resources of the kingdom, here reared a windmill, the first industrial building in Montreal. The winds of



Royal Victoria College

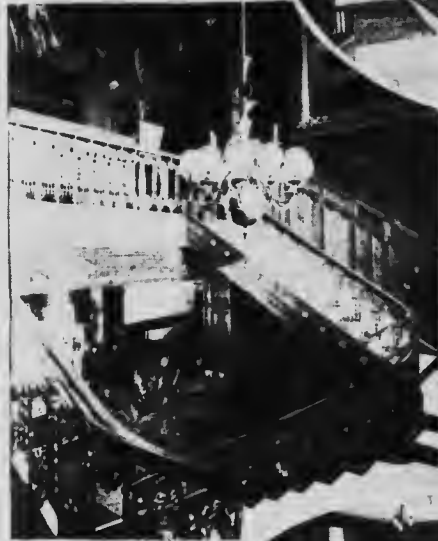
those autumns long ago turned the fans and ground the seeds of harvests toilsomely gathered from cornfields among whose furrows many a time the arrow and tomahawk spilt the blood of the reaper and sower. The old mill with its pastoral associations of peaceful toil in time passed away, and was succeeded by a structure dedicated to the art of war, for on the same spot stood 'la Citadelle.' This stronghold, though primitive in its appointments, was important during the French occupation and evacuation of New France, being the last fortification held by French troops on Canadian soil.

"This old earthen citadel, a relic of mediæval defence, was, about seventy years ago, removed, its material being used in the levelling and



Place Viger Hotel - Passenger Station

enlargement of the Parade Ground, or as it is called, the 'Champ de Mars.' Its demolition might be regretted in an age of progress, even sent before advance. The grand though built to promote the people of the Dominion destroyed the pathetic the early struggles and which still clothes its which heightens the appreciation of a civiliza-



turrets and striking pic-length of the feet, with a feet. The has a magnificent twenty-one abuts the two with broad granite up to it from the street,



Interior Views, Place Viger Hotel

were it not that in an ment must give way Hotel Viger, al- the comfort of ion, has not interest of heroism site, and present ap- tion of which the old mill and fort were the pioneers."

The Place Viger Hotel is built in the quaint style of the French Renaissance, partaking of the type of the old chateaux found on the banks of the Loire. The general outline and effect of the five-story building is one of great solidity, combined with gracefulness. It is constructed of grey limestone and Scotch buff firebrick, all in complete harmony with and emphasizing the beauties of its architectural design, and, crowned by a massive tower rising from a graceful sweep into a great circle, with its numerous gables, forms a ture. The total building is 300 depth of 66 main facade cent arcade of arches, which projecting gables, lithic steps leading and facing Place Viger the



balcony affords a delightful resort for guests in the pleasant hours of a summer evening. The main staircase of Carrara marble is beautifully finished, and the general effect of the artistic decorations symbolizes the national character of the structure, being wrought in designs of tasteful coloring. The spacious dining-room is bright, cheerful and handsome, with luxurious appointments; the cuisine of that high standard maintained by the Canadian Pacific in its



Notre Dame Cathedral

unexcelled service. The magnificent drawing-room and parlors, from which the balcony, a grand summer promenade, stretching almost the entire length of the building, is reached, are elaborately and richly furnished, and the sleeping apartments, from whose windows unobstructed views of the surroundings can be obtained, are large, well-ventilated and elegantly appointed—the rooms being single or *en suite*, as may be desired. There is accommodation for 350 guests. In the heating, lighting and sanitary arrangements, which were specially designed for this hotel, the acme of perfection

has been secured, and the entire building, which is modern in every respect, is as absolutely fire proof as human ingenuity can devise.

The Place Viger hotel is advantageously situated for those reaching the city by train or boat, being a short distance from the principal steamer docks, and combined in its erection is the Place Viger Passenger Station of the Canadian Pacific Railway (from which all trains leave for and arrive from Quebec and resorts in the Laurentians, and certain trains for and from Ottawa), and although located amidst quiet and restful surroundings, is only a few minutes' walk from the business portion of the city, and convenient to the city's street car system.



Chateau de Ramezay

The Place Viger Hotel is operated on the American plan. The rates are \$3.00 per day and upwards.

Other Places of Interest

Amongst the many places of attraction to the tourist are the Cathedral of St. James, an almost exact reproduction on a reduced scale of St. Peter's at Rome ; the old parish church of Notre Dame, one of the largest edifices in America, which seats 15,000 people, with its big bell, "le gros Bourdon," one of the largest in the world, and its magnificent chapel in rear of the main altar, which is adorned by valuable paintings ; the Jesuits' Church and Notre Dame de Lourdes, famous for their magnificent frescoes ; the curious old church of Our Lady of Bonsecours dating from 1657, with its "Little Heaven"



General Offices Passenger Station

in the upper portion; the Chateau de Ramezay, once the home of the Governors of Canada, which contains a splendid collection of historical relics—the "Elgin Gallery," with rare historical portraits, the "Court Room," hung with battle scenes of the British Empire, the "Council Chamber," where Montcalm and other great rulers sat in state, the "Salon," in which Montgomery met the citizens of Montreal at the time of the American invasion of 1775, the old vaults in one of which Franklin's press was set up, etc. At Bonsecours Market, facing the harbor, a glimpse is given of the primitive life of the habitant, especially interesting in the forenoon of market days—Tuesdays and Fridays. The visitor will also be interested in a visit to McGill University, founded in 1828, one of the foremost educational institutions of the world—a magnificently located group of buildings, which include the arts, medical, Macdonald engineering, chemistry and mining, physics buildings, the Redpath museum and university library, and the observatory—with a yearly attendance of over 1,000 students; Laval University, the chief French seat of learning, occupying amongst that nationality the same position as McGill amongst the English; the Seminary of Philosophy on the slope of Mount Royal; the Little Sisters of the Poor, the Monastery of the Franciscan Fathers, and Little and Grand Seminaries on Sherbrooke street, with the two historical towers, where Marguerite Bourgeois, founder of the Order of the Congregation of Notre Dame, taught the young Indians over 250 years ago; Monklands, the mother house of the congregation of Notre Dame, and at one time the official residence of the Governors of Canada; the Monastery of the Precious Blood, Notre Dame de Grace; the Royal Victoria, Montreal General, Hotel Dieu, Notre Dame and Grey Nuns hospitals; Deaf and Dumb Institute, directed by the Sisters of Providence, and Institute for the Blind; the Art Association Building, with its rare collection of paintings; the Natural History Association's museum, containing a famous collection of Egyptian antiquities; Christ Church Cathedral, a perfect specimen of Gothic architecture, or any of the numerous edifices of other denominations; the City Hall, Court House, Post Office, New York Life, Canada Life, Windsor Street Station of the Canadian Pacific Railway, Armory and drill halls and a score or more of convents and other educational institutions; while a drive along Sherbrooke, Dorchester and other fashionable streets or through Westmount, Montreal's fashionable West End, will reveal the opulent homes of wealthy citizens.

The new building of the Bank of Montreal deserves a special visit. Its great banking hall is a marvel of modern architecture. Its rich decoration of marble columns and gilded capitals has been designed with exquisite taste, and an effect of dignity and spaciousness has been produced, worthy of one of the strongest financial institutions in the world.

Montreal's Magnificent Environments

There is no other large city in America, where a quarter or a half-hour's journey will traverse so many scenes of varied natural beauty or places of historic interest, or a few hours' railway trip will take one to more picturesque solitudes of mountain, lake and stream.

The famous Lachine Rapids are at the city's doors, and to run them is a pleasant experience which few visitors to the city miss; Caughnawaga, an Indian village where dwell the remnant of a once powerful tribe, is worth a visit; and near by are Lake St. Louis, on which have taken place some of America's greatest aquatic contests, and the Lake of Two Mountains, where the opportunities for yachting and boating are unsurpassed. At the foot of this lake is St. Anne de Bellevue, where Tom Moore was inspired, by the wealth of its beauty, to write the immortal "Canadian Boat Song." The Laurentian mountains to the north are penetrated by the Canadian Pacific in a virgin region of countless lakes and streams which are claimed to be the best trout fishing waters in Canada. Both banks of the Ottawa River are paralleled by the Canadian Pacific to the City of Ottawa, the capital of the Dominion—the line on the western or Ontario bank leading past Caledonia Springs, a health resort, the fame of whose waters attracts visitors from all parts of America, and that on the eastern or Quebec side past towns near which large and small game is abundant and fishing waters plentiful. Another branch runs through the Eastern Townships with their rich farms and pleasant lakes and rugged tree-clad hills—ideal resting places during the heated term; and from Montreal one has means of communication with all parts of America.

Within shorter distance—and reached by street-car—are equally interesting spots—Sault au Recollet, where there is an immense convent at which large numbers of American young ladies are educated; the typical French-Canadian villages of Cartierville, St. Laurent, Cote des Neiges, Pointe aux Trembles, Longue Pointe, near the latter being located a large asylum for the insane, and the pleasure resorts of Bout de l'Ile, etc.

Quaint Quebec

A Bit of Mediaeval Europe
in American Setting



FEW, if any, places in America rival the ancient city of Quebec in its attractiveness. The quaint old-walled place is the most interesting spot historically on this western continent, and combined with this feature is a picturesque location, perhaps unequalled in the world. Quebec is like a transplanted city—a French town of olden times set down in American surroundings, in which the chief characteristics of mediaeval Europe and modern America are deftly and delightfully interwoven—and around it are clustered a host of legendary memories. Perched on a high promontory at the confluence of the St. Lawrence and St. Charles Rivers, its situation is unique and magnificent. On the highest point is the famed citadel, which has given to this city the name of the "American Gibraltar," and everywhere around are battlements, fortresses, castles, monasteries, convents and feudal gates and towering walls. As one puts foot on the historic soil of this matchless Mecca of tourists, the ancient and foreign aspect of the city, so wholly at variance with the rest of the continent, is impressive. "The quaint, picturesque figures of the inhabitants," says one writer, "their alien speech, their primitive vehicles of locomotion, their antique French houses, huddled together and poised up high on the edge of the cliff, the unrivalled citadel and menacing fortifications, the narrow, crooked streets, and winding, steep ascent to the Upper Town, recalls some old-world capital—a survival of mediaeval times."

All about this ancient stronghold first of the French then of the English—every spot has been the



Wolfe and Montcalm Monument, Quebec.

scene of stirring events. Here it was that the early discoverers of the northern part of America first landed, and where European civilization was first planted. Here lived those illustrious and adventurous adventurers whose exploits shed lustre on Old France, and from here at one time the whole country, from the great lakes to the gulf of Mexico, was governed. Here the French made their last fight for empire in this western world, on the Plains of Abraham, where Wolfe and Montcalm heroically fell. But for nearly a century and a half peace has prevailed between the two great nations, and while still redolent of the martial, and religious flavor, with which it was characterized from its very birth, Quebec has gradually evolved itself from a military stronghold into a bustling commercial centre and an



Quebec, from Levis.

ideal resort for pleasure and health seekers. During the winter months, residents and visitors alike revel in the delights of those most interesting sports—curling, skiing, skating, hockey, snowshoeing and tobogganing—and the opportunities for sleigh-driving in comfortable vehicles are unexcelled. While these amusements are usually indulged in during the whole winter, a week of sports is annually held which is an especial attraction to strangers. In summer, Quebec is a charming rendezvous, its latitude and altitude giving a delightful climate entirely free from the heat and discomfort usually experienced in less favorably situated places.

But interesting and beautiful as Quebec may be, with its quaint buildings and historical treasures, the drives and excursions about the city are no less

attractive. Amongst them are those to the Falls of Montmorency, 100 feet higher than those of Niagara, and the Chaudiere Falls, second only to the great cataract; St. Anne de Beaupre, for two centuries and a half the Mecca of thousands of devout pilgrims seeking restoration of health at the sacred shrine, where a magnificent edifice, raised to the dignity of a Basilica by Pope Pius IX., has been erected, and which is reached by a short electric railway trip; Beauport, bombarded by Wolfe in 1759; Lorette, an Indian village, where the remnant of the once powerful tribe of Hurons is located; Levis, across the St. Lawrence, where there are large military forts and engineers'



Chateau Frontenac

camp; and many picturesque villages which dot the landscape and where the curious primitive customs of the early French settlers still prevail.

To meet the requirements of the annually increasing volume of tourist travel, there was recently erected at the base of the citadel a magnificent fire-proof hotel, the Chateau Frontenac, a stately seven-storey structure, built after the style of the French chateaux of the sixteenth century, but of course embracing twentieth century ideas of spaciousness, convenience and elegance. Over one million judiciously spent dollars have given the world this marvel of architecture. Crowning the cliff, on which the famed

Dufferin Terrace stretches its great length—the longest promenade known, for it now extends past the citadel to the Cove Fields—hundreds of feet above the St. Lawrence and the Lower Town, the perspective of the city, stream and landscape seen from the windows of this unique hotel is magnificent—a scene of both historic fame and majestic grandeur—a view of mountain, valley, river and island, from an elevation such as no other city boasts. The Chateau itself harmonizing as it does with its picturesque surroundings impresses the beholder as having always been part and parcel of the granite cliff on which it stands. In its interior the predominating mediæval design is carried out in elaborate detail, and its fluted columns and dainty panels are specimens of exquisite delineation and artistic workmanship, and the apartments throughout are luxurious. The rates are \$3.50 per day and upwards, with special arrangements for large parties or those making prolonged visits.

Quebec is best reached via Montreal. Tourists from New York reach Montreal by the New York Central and Rutland Roads, and those from the New England States by the Boston & Maine and the C.P.R., and it is four and a half hours' run from Montreal to Quebec by the Canadian Pacific Railway, through the old French settlements along the north bank of the St. Lawrence, or during navigation steamer can be taken down the St. Lawrence and the return trip made by rail.



Caleche

Ottawa

The Capital City
of Canada



the capital of Canada, is so easily reached from Montreal that few visiting that commercial centre fail to run up to the seat of Government to view its beauties and the magnificent scenery around what a former Governor-General called "that fair city with its crown of towers." The city's site for grandeur is second only to that of Quebec, being located on the Ottawa river, the third greatest stream in volume in all Canada, where the Rideau and Gatineau join.

It was originally called By-town, but in 1854 the name was changed to Ottawa, when it was selected as the political capital of the country.

Ottawa, it is claimed, is the most picturesque capital in the world, and in many ways it is striving to be the Washington of the North. The waters of the Ottawa, which are here set between the provinces of Ontario and Quebec, pour over the Chaudiere Falls—resembling in shape the rim of a huge cauldron or kettle; and the Rideau Falls, half a mile distant, where the Rideau's flood leaps into the Ottawa, are so called from their likeness to a curtain—"rideau." This waterfall also gives name to the vice-regal residence of the Governor-General of Canada, from which it is only a stone's throw distant. Across the Ottawa, opposite Rideau Hall, is the mouth of the Gatineau, along which, before its confluence with the larger stream, are numerous picturesque rapids. Ottawa's great water-power has long since made it the chief lumber and milling centre of the Dominion, and in its immense sawmills and other industries are attractions to the tourist, while to ride down the timber slides by which the square timber of the upper Ottawa passes uninjured down to the navigable waters below is an exciting experience which many visitors enjoy. By an artificial channel, 300 yards above the falls, rafts can pass over the incline.



Vice-Royal Residence, Ottawa.



Parliament Buildings, Ottawa.

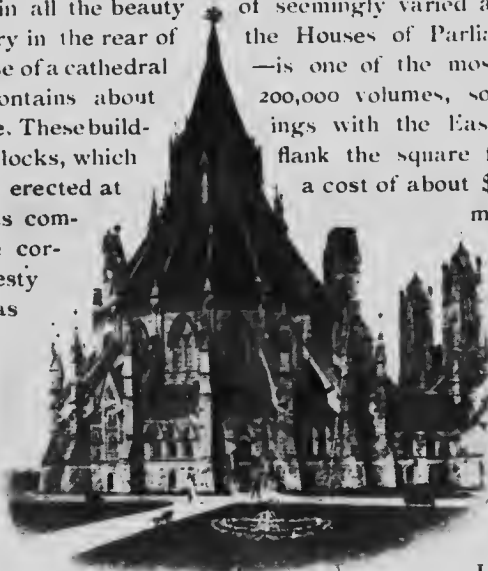
straight reaches at intervals reducing the speed. Some of these terminate with a drop of four feet over which the raft jumps. The immense speed, the rush of waters, the succession of chutes stretching out like sloping stairs, timbers rocking like a bundle of reeds, and getting a momentary rush with each incline, offer a novelty to visitors which can be enjoyed in perfect safety.

It is the national buildings, however, which are the chief glory of Ottawa, and the principal object of interest to strangers. They stand out boldly on Parliament Hill, a steep promontory, rising 100 feet or more from the Ottawa River, in all the beauty of seemingly varied architecture. The octagonal library in the rear of the chapter house of a cathedral world, and contains about 200,000 volumes, some of which are exceedingly rare. These buildings with the Eastern and Western Departmental Blocks, which flank the square fronting the main structure, were erected at a cost of about \$5,000,000. Their construction was commenced in 1859 and a year later the corner stone was laid by His Majesty King Edward VII., who was then Prince of Wales.

Other objects of interest are the Rideau Canal, built in 1827 for military purposes, Major Hill Parks, the city buildings, the great Roman Catholic Cathedral, the geological Museum, the Fish-Lovers' Walk, the National Art Gallery in the Supreme Court Building, and the Central Experimental Farm in the suburbs. There are a number of delightful summer resorts near Ottawa, amongst which are Aylmer and Queen's Park, Chelsea, Kingsmere, the Cascades, etc., and reached by rail is the Gatineau Valley, a magnificent summer domain in which are pleasant restful places near pretty lakes and streams which are attractive to the angler, and in the woods the hunter finds plenty of game.

Opposite Ottawa is the French city of Hull, and combined they have a population of about 85,000.

Ottawa is reached from Montreal by the Canadian Pacific Railway, whose tracks parallel both banks of the Ottawa River, and by steamer in summer, the railway run being made in three hours by the Short Line Express.



Library—Parliament Buildings

YOU SHOULD VISIT IN MONTREAL

Mount Royal Park
The Cemeteries
Place Viger
Longue Point Asylum
Hochelaga Convent
Court House
Volunteers' Armories
Church of Our Lady of Bonsecours
Church of N.-D. de Pitie
Church of Notre-Dame and Chapel
The Fabrique
Church of Our Lady of Lourdes
Laval University
St. James Methodist Church
Ar. Association
McGill University
Royal Victoria Hospital
Dominion Square
Y. M. C. A. Building
Macdonald Monument
Martello Towers
Villa-Maria Convent
Hunt Club, Cote des Neiges
Sault au Recollet
Grand Seminary
Mount St. Louis Institute
Royal St. Lawrence Yacht Club,
Dorval

Lachine Rapids
St. Helen's Island
Chateau de Ramezay
Nelson Monument
City Hall
Champ de Mars
Bonsecours Market
Hospice Gamelin
Place d'Armes
Bank of Montreal
Custom House and Harbor
General Hospital
Jesuit Church and College
Christ Church Cathedral
Natural History Association
Royal Victoria College
Hotel-Dieu
St. James Cathedral
C. P. R. Windsor Street Station
High Level Reservoir
Priests' Farm
Franciscan Fathers' Monastery
Forest and Stream Club, Dorval
"La Crêche," Grey Nunnery
College de Philosophie
Bourget Statue

RECOGNIZED
SANTO SPIRITO

Publications

ISSUED BY THE



CANADIAN
PACIFIC
RAILWAY
COMPANY

"THE NEW HIGHWAY TO THE ORIENT"
"SUMMER TOURS"
"QUEBEC, SUMMER AND WINTER"
"FISHING AND SHOOTING"
"MONTREAL"
"ST. ANDREWS-BY-THE-SEA"
"CLIMATES OF CANADA"
"WESTWARD TO THE FAR EAST"
"ANNOTATED TIME-TABLE"
"THE CHALLENGE OF THE CANADIAN ROCKIES"
"AROUND THE WORLD"
"ACROSS CANADA TO AUSTRALASIA"

MOST of these publications are handsomely illustrated, and contain much useful information in interesting shape. "The Annotated Time-Table" will be found a valuable companion for all transcontinental travelers. Other pamphlets descriptive of the Dominion—"Western Canada," "British Columbia," "The Yukon and Lake Atlin Gold Fields," etc.,—are also issued by the Company. Copies may be obtained **FREE** from Agents of the Company, or will be mailed to any address on application to undersigned. The Company have also published a new map, on the polar projection, showing the whole of the northern hemisphere, and the Canadian Pacific Railway's Around the World Route in a novel and interesting way, and another of Canada and the northern half of the United States, showing the entire system of the Company in detail. These maps will be given away for public and prominent display. Another useful map is the "Sportsmen's Map of Canada," showing the regions for the different large and small and feathered game and the principal fishing waters.

A. H. NOTMAN,
Assistant General Passenger Agent,
1 King Street East, Toronto.

H. J. COLVIN,
District Passenger Agent,
362 Washington Street, Boston.

C. B. FOSTER,
District Passenger Agent,
St. John, N.B.

A. C. SHAW,
General Agent, Passenger Dept.,
228 South Clark Street, Chicago, Ill.

E. J. COYLE,
Assistant General Passenger Agent,
Vancouver, B.C.

E. V. SKINNER,
Assistant Traffic Manager,
458 Broadway, N.Y.

W. R. CALLAWAY,
General Passenger Agent, Soo Line,
Minneapolis.

W. S. THORN,
Assistant General Passenger Agent,
Soo Line, St. Paul, Minn.

C. E. E. USSHER,
Genl. Passr. Agent, Eastern Lines,
Montreal.

ARCHER BAKER,
European Traffic Manager,
62-65 Charing Cross, S.W., and 67-68
King William St., E.C., London, Eng.,
24 James St., Liverpool, 67 St. Vincent
St., Glasgow.

H. McMURTRIE,
Passenger Agent,
629-631 Chestnut St., Philadelphia.

J. H. THOMPSON,
Freight and Passenger Agent,
Baltimore.

W. W. MERKLE,
City Agent,
1229 Pennsylvania Ave.,
Washington, D.C.

M. M. STERN,
District Passenger Agent,
Palace Hotel Building,
San Francisco.

G. W. HIBBARD,
General Passenger Agent,
D., S. S. & P. Ry.,
Marquette, Mich.

D. E. BROWN,
General Agent, China, Japan, etc.,
Hong Kong.

C. E. McPHERSON,
Genl. Passr. Agent, Western Lines,
Winnipeg.

**ROBERT KERR, Passenger Traffic Manager,
MONTREAL.**

ul
a
of
in
EE
er-
ng
he
ru
se
he
all

-88
g.
ent

ia.

re.

.C.

co.

ch.

ng.

eg.



GENERAL OFFICES AND PASSENGER STATION
MONTREAL

