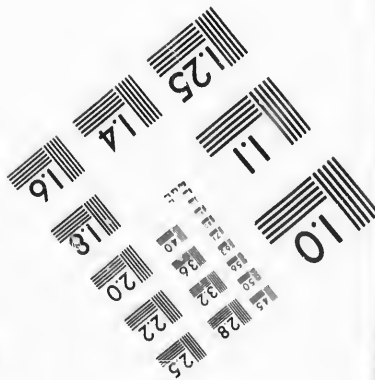
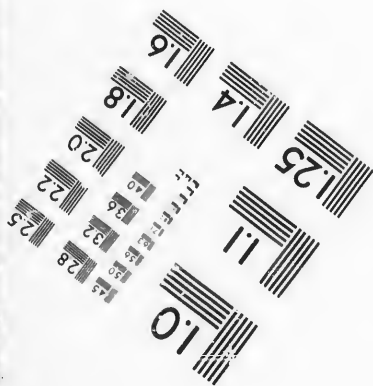
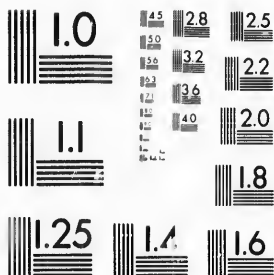


**IMAGE EVALUATION
TEST TARGET (MT-3)**



**Photographic
Sciences
Corporation**

23 WEST MAIN STREET
WEBSTER, N.Y. 14580
(716) 872-4503

1.4 1.5 1.6 1.7 1.8
1.9 2.0 2.1 2.2 2.3 2.4 2.5
2.6 2.7 2.8 2.9 3.0 3.1 3.2 3.3 3.4 3.5

**CIHM/ICMH
Microfiche
Series.**

**CIHM/ICMH
Collection de
microfiches.**



Canadian Institute for Historical Microreproductions / Institut canadien de microreproductions historiques

1.0
1.1
1.2
1.3
1.4
1.5
1.6
1.7
1.8
1.9
2.0
2.1
2.2
2.3
2.4
2.5
2.6
2.7
2.8
2.9
3.0
3.1
3.2
3.3
3.4
3.5

© 1987

The copy filmed here has been reproduced thanks to the generosity of:

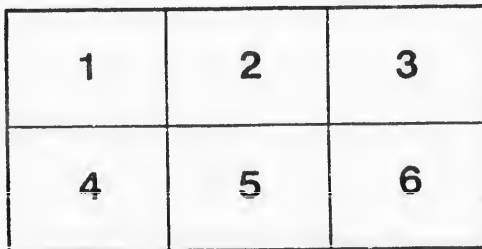
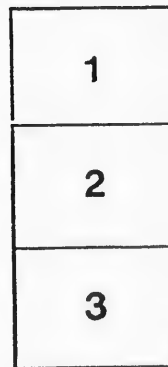
Metropolitan Toronto Library
Canadian History Department

The images appearing here are the best quality possible considering the condition and legibility of the original copy and in keeping with the filming contract specifications.

Original copies in printed paper covers are filmed beginning with the front cover and ending on the last page with a printed or illustrated impression, or the back cover when appropriate. All other original copies are filmed beginning on the first page with a printed or illustrated impression, and ending on the last page with a printed or illustrated impression.

The last recorded frame on each microfiche shall contain the symbol \rightarrow (meaning "CONTINUED"), or the symbol ∇ (meaning "END"), whichever applies.

Maps, plates, charts, etc., may be filmed at different reduction ratios. Those too large to be entirely included in one exposure are filmed beginning in the upper left hand corner, left to right and top to bottom, as many frames as required. The following diagrams illustrate the method:



L'exemplaire filmé fut reproduit grâce à la générosité de:

Metropolitan Toronto Library
Canadian History Department

Les images suivantes ont été reproduites avec le plus grand soin, compte tenu de la condition et de la netteté de l'exemplaire filmé, et en conformité avec les conditions du contrat de filmage.

Les exemplaires originaux dont la couverture en papier est imprimée sont filmés en commençant par le premier plat et en terminant soit par la dernière page qui comporte une empreinte d'impression ou d'illustration, soit par le second plat, selon le cas. Tous les autres exemplaires originaux sont filmés en commençant par la première page qui comporte une empreinte d'impression ou d'illustration et en terminant par la dernière page qui comporte une telle empreinte.

Un des symboles suivants apparaîtra sur la dernière image de chaque microfiche, selon le cas: le symbole \rightarrow signifie "A SUIVRE", le symbole ∇ signifie "FIN".

Les cartes, planches, tableaux, etc., peuvent être filmés à des taux de réduction différents. Lorsque le document est trop grand pour être reproduit en un seul cliché, il est filmé à partir de l'angle supérieur gauche, de gauche à droite, et de haut en bas, en prenant le nombre d'images nécessaire. Les diagrammes suivants illustrent la méthode.

ails
du
difier
une
page

rata
p
elure,
à

32X

1856

TR
971.3
C119.3

x

CANADA COMPANY.

Statement read at a General Court of Proprietors, held at the Company's House, in St. Helen's Place, London, on Thursday, the 20th March, 1856.

CHARLES FRANKS, Esq., GOVERNOR,
In the Chair.

THE accounts of the year 1855, just read, taken in connection with those of 1854, shew that the Company's affairs are in a state of great prosperity, and of important progress.

The year 1854, through a combination of circumstances, was a period of unprecedented prosperity to Canada. The construction of railroads and other public works throughout the Province was proceeding with vigour. The amount of money remitted for those purposes, and for investment in the purchase of real estate and provincial securities, was very considerable; the harvest excellent, both in

quantity and quality, and prices of produce high; the emigration also was larger than it had been for many years. The Canada Company benefited greatly by this state of affairs in every branch of their transactions, as shewn by the accounts of 1854. During the past year, however, many circumstances have occurred which have tended to check the continuance of the great prosperity which marked its predecessor. The state of monetary affairs in England partially suspended the carrying out of the numerous works commenced in the Province, and stopped the progress of those about to be undertaken. The remittances to Canada in 1855 were consequently, as may well be conceived, limited in amount; and the scarcity of money in Europe has produced its corresponding effect in Canada, where a very high rate of interest can readily be obtained on good security. The lumber trade has also suffered much in the past year through the embarrassments in Europe and the emigration in 1855 amounted to only 21,274 persons, whilst in 1854 the numbers were 53,153. In this position of affairs the Report of the transactions of the Company in 1855 may be considered as extremely satisfactory.

In disposing of the Company's lands the policy hitherto pursued has been neither to force the sale thereof nor to withhold them from market, but to abide the result of the progress of the Province, and thus to obtain the advantage of the rapid increase of wealth which was

sure to arise from the opening up of the country by the various public works, and by the extension of settlement from the spreading of the increased population.

The sale of the public lands, which have been disposed of at very low prices, has naturally contributed to the extended cultivation of the Province, and has thus brought some parts of the Company's lands more within the centre of settlement. It may be fully expected that the rapid progress the Province is making in commerce, wealth, and population, combined with the great facilities afforded through the leasing system, (which experience has shewn to be admirably adapted to promote the convenience of settlers,) will afford the Company, with careful and judicious management, every advantage they can reasonably expect in the disposal of their remaining lands. This has been well shewn in the price obtained during the past year, which averages 43s. 9d. an acre, being an excess of 21s. per acre over the valuation of 1854, or an advance of nearly 100 per cent.

The Directors have to report that the necessary steps have been taken for obtaining the Act of Parliament authorised at the last General Court, which has been brought in, and is now in progress through the House of Commons.

