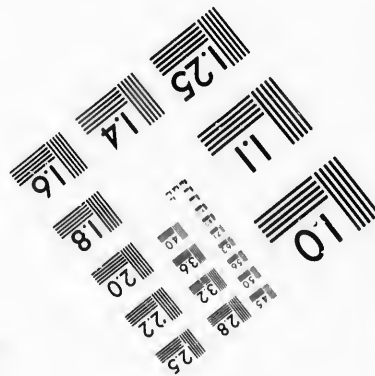
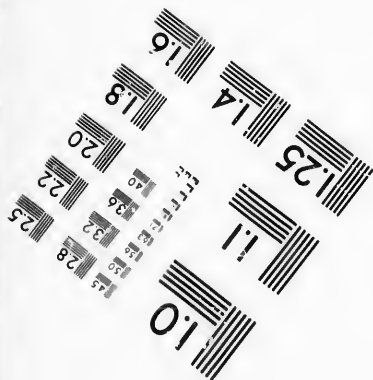
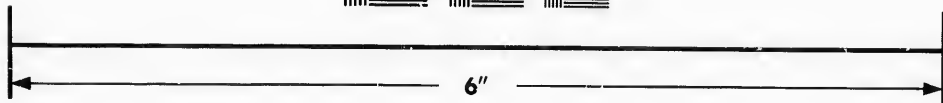
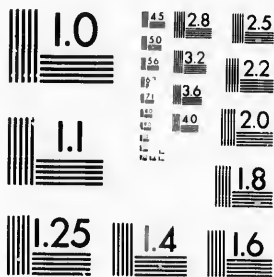


**IMAGE EVALUATION
TEST TARGET (MT-3)**



**Photographic
Sciences
Corporation**

23 WEST MAIN STREET
WEBSTER, N.Y. 14580
(716) 872-4503

18 20 22 25
28 32 36 38

**CIHM/ICMH
Microfiche
Series.**

**CIHM/ICMH
Collection de
microfiches.**



Canadian Institute for Historical Microreproductions / Institut canadien de microreproductions historiques

10 01

© 1987

Technical and Bibliographic Notes/Notes techniques et bibliographiques

The Institute has attempted to obtain the best original copy available for filming. Features of this copy which may be bibliographically unique, which may alter any of the images in the reproduction, or which may significantly change the usual method of filming, are checked below.

L'Institut a microfilmé le meilleur exemplaire qu'il lui a été possible de se procurer. Les détails de cet exemplaire qui sont peut-être uniques du point de vue bibliographique, qui peuvent modifier une image reproduite, ou qui peuvent exiger une modification dans la méthode normale de filmage sont indiqués ci-dessous.

- Coloured covers/
Couverture de couleur
- Covers damaged/
Couverture endommagée
- Covers restored and/or laminated/
Couverture restaurée et/ou pelliculée
- Cover title missing/
Le titre de couverture manque
- Coloured maps/
Cartes géographiques en couleur
- Coloured ink (i.e. other than blue or black)/
Encre de couleur (i.e. autre que bleue ou noire)
- Coloured plates and/or illustrations/
Planches et/ou illustrations en couleur
- Bound with other material/
Relié avec d'autres documents
- Tight binding may cause shadows or distortion along interior margin/
La reliure serrée peut causer de l'ombre ou de la distorsion le long de la marge intérieure
- Blank leaves added during restoration may appear within the text. Whenever possible, these have been omitted from filming/
Il se peut que certaines pages blanches ajoutées lors d'une restauration apparaissent dans le texte, mais, lorsque cela était possible, ces pages n'ont pas été filmées.
- Additional comments:/
Commentaires supplémentaires:

- Coloured pages/
Pages de couleur
- Pages damaged/
Pages endommagées
- Pages restored and/or laminated/
Pages restaurées et/ou pelliculées
- Pages discoloured, stained or foxed/
Pages décolorées, tachetées ou piquées
- Pages detached/
Pages détachées
- Showthrough/
Transparence
- Quality of print varies/
Qualité inégale de l'impression
- Includes supplementary material/
Comprend du matériel supplémentaire
- Only edition available/
Seule édition disponible
- Pages wholly or partially obscured by errata slips, tissues, etc., have been refilmed to ensure the best possible image/
Les pages totalement ou partiellement obscurcies par un feuillet d'errata, une pelure, etc., ont été filmées à nouveau de façon à obtenir la meilleure image possible.

This item is filmed at the reduction ratio checked below/
Ce document est filmé au taux de réduction indiqué ci-dessous.

10X	14X	18X	22X	26X	30X
<input type="checkbox"/>	<input type="checkbox"/>	<input type="checkbox"/>	<input checked="" type="checkbox"/>	<input type="checkbox"/>	<input type="checkbox"/>
12X	16X	20X	24X	28X	32X

The copy filmed here has been reproduced thanks to the generosity of:

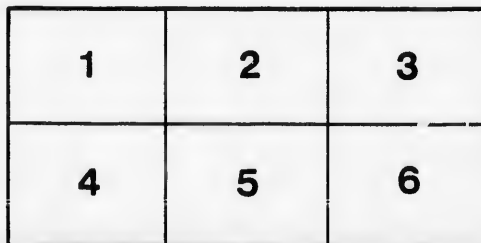
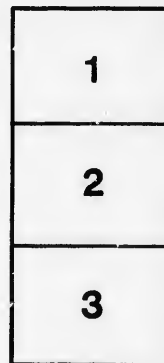
New Brunswick Museum
Saint John

The images appearing here are the best quality possible considering the condition and legibility of the original copy and in keeping with the filming contract specifications.

Original copies in printed paper covers are filmed beginning with the front cover and ending on the last page with a printed or illustrated impression, or the back cover when appropriate. All other original copies are filmed beginning on the first page with a printed or illustrated impression, and ending on the last page with a printed or illustrated impression.

The last recorded frame on each microfiche shall contain the symbol \rightarrow (meaning "CONTINUED"), or the symbol ∇ (meaning "END"), whichever applies.

Maps, plates, charts, etc., may be filmed at different reduction ratios. Those too large to be entirely included in one exposure are filmed beginning in the upper left hand corner, left to right and top to bottom, as many frames as required. The following diagrams illustrate the method:



L'exemplaire filmé fut reproduit grâce à la générosité de:

New Brunswick Museum
Saint John

Les images suivantes ont été reproduites avec le plus grand soin, compte tenu de la condition et de la netteté de l'exemplaire filmé, et en conformité avec les conditions du contrat de filmage.

Les exemplaires originaux dont la couverture en papier est imprimée sont filmés en commençant par le premier plat et en terminant soit par la dernière page qui comporte une empreinte d'impression ou d'illustration, soit par le second plat, selon le cas. Tous les autres exemplaires originaux sont filmés en commençant par la première page qui comporte une empreinte d'impression ou d'illustration et en terminant par la dernière page qui comporte une telle empreinte.

Un des symboles suivants apparaîtra sur la dernière image de chaque microfiche, selon le cas: le symbole \rightarrow signifie "A SUIVRE", le symbole ∇ signifie "FIN".

Les cartes, planches, tableaux, etc., peuvent être filmés à des taux de réduction différents. Lorsque le document est trop grand pour être reproduit en un seul cliché, il est filmé à partir de l'angle supérieur gauche, de gauche à droite, et de haut en bas, en prenant le nombre d'images nécessaire. Les diagrammes suivants illustrent la méthode.

I
QUAL

Armstr
Abram,
Armstr
Amos, I
Appleb
Amos, 2
Amos, 1
Adams,
Atchesc
Allan, J
Amos, C
Adams,
Armstr
Abram,
Allan, T
Armstr
Aide, S
Allen,

Beattey
Browne
Bissett,
Belyea,
Best, W
Beattea
Belyea,
Beattea
Boyle,
Boone,
Baxter,
Brown,
Brown,

Clark, 7
Clark,
Clark, V
Calnan,
Currie,
Coram,
Craft, 5
Campb
Clark, 3
Campb
Cripps,
Carroll,
Connell
Connell
Campb
Craft, 1

LIST OF ELECTORS, 1890,

QUALIFIED TO VOTE FOR MEMBERS OF THE HOUSE OF ASSEMBLY.

BROOKS WARD.

Armstrong, James H	blksmith	Connor, George	laborer
Abram, George L	carpenter	Collins, Cornelius	stone cutter
Armstrong, Adams	laborer	Clark, Charles R	clerk
Amos, Isaac	carpenter	Crisp, Rev John O	
Appleby, Benjamin H	grocer	Cogle, John P	r r e
Amos, Thomas J	laborer	Cassidy, Francis	yeoman
Amos, William H	mariner	Cameron, Robert	r r e
Adams, David jr	surveyor	Cogle, George	clerk
Atcheson, Anthony	customs dep	Copeland, William H	granite wr
Allan, Joseph	moulder	Cameron, Jasper R	barber
Amos, Charles E	laborer	Coster, Charles	accountant
Adams, Robert L	watchmkr	Coster, J Arthur	do
Armstrong, George E	teacher	Connor, William	cordwr
Abram, George jr	r r e	Connelly, William	watchman
Allan, Thomas C	stonecutter	Connolly, Frank	laborer
Armstrong, Frank J	r r e	Clark, Edward M	do
Aide, Samuel J	grocer	Casey, John	do
Allen, George S	hr John Allen	Clarke, George A	cigar maker
		Clarke, H Douglas	fireman
Beattey, Sylvanus H	caulker	Clarke, William	caulker
Browne, Thomas	painter	Cogle, Fenwick W	clerk
Bissett, Stephen A	mariner	Craft, Leonard	laborer
Belyea, J Medley	carpenter	Crawford, Leslie	fireman sh line
Best, William H	seaman	Cullen, John	fireman
Beattey, William M	r r e	Coram, Walter C	stationer
Belyea, Emery	r r e		
Beattey, John E	fisherman	Davis, Daniel G	grocer
Boyle, William	laborer	Drake, Jacob B	boat builder
Boone, Charles	clerk	Driscoll, Bartholomew J	surv
Baxter, John B M	student	Dunlavy, William	clerk
Brown, George	fireman n b r	Donovan, Timothy	victualer
Brown, Walter B	telegraph op	Dixon, John	clerk
		Duke, John	carpenter
Clark, Timothy	light house kpr	Dunham, William	fisherman
Clark, George	caulker	Durant, John	moulder
Clark, William	carpenter	Duffy, Isaac	wharf builder
Calnan, Michael	laborer	Dykeman, Gilbert P	carp
Currie, John	grocer	Drake, George O	nail cutr
Coram, Daniel	fisherman	Donovan, Michael	printer
Craft, Robert	do	lavis, George A	barister
Campbell, John	sawyer	Drake, Whitney O	carpenter
Clark, James S	teacher	Doane, James N	mariner
Campbell, John jr	sawyer	Doulan, Frank	moulder
Cripps, George	mariner	Dale, Henry	stone polisher
Carroll, Robert A	coal dealer	Dunham, Herbert	stationer
Connelly, Dennis	laborer	Dunlavy, Harry S	clerk
Connelly, John jr	stevedore	Dunn, William	seaman
Campbell, Malcolm H	laborer	Durant, John jr	clerk
Craft, Leander	stone cutter	Durant, George	machinist

Eagles, Francis B	carp	Gilbraith, Samuel	seaman
Ervin, William	painter	Gordon, John J	machinist
Earle, James	trader	Gallant, Alexander	laborer
Eagles, James H	grocer	Ganey, Michael	laborer
Earle, Samuel	laborer	Gallagher, John F	clerk
Ellis, John V	editor	Gayton, William	mariner
Ervin, William J	painter	Godsoe, George	painter
Ervin, John L	laborer	Gouitt, John	raftsman
Estey, James H	r r e	Glasgow, Edwin C	mariner
Ervin, Richard	painter	Glass, George F	mariner
Egan, Patrick	laborer	Green, Corey	millman
Ellis Frank B	journalist	Hasson, John	fisherman
Earle, Isaac M	laborer	Holland, William	laborer
Ervin, Frederick	r r e	Hurst, Richard	carpenter
English, William	seaman	Howard, William A	do
Earle, Edward	baker	Hickson, Rev Edward	
Earle, Henry O	stevedore	Haslam, John	caulker
Earle, James S	laborer	Haley, Francis J	mariner
Earle, Robert M	do	Hatfield, David J	clothier
Estey, Whitfield	teamster	Hughes, Charles	laborer
Estey, William H	laborer	Holder, Charles	mariner
Eryin, Frederick	painter	Harrigan, John	granite wkr
Forbes, John S	teamster	Hubert, John	seaman
Fawcett, John H	fisherman	Howard, Oliver	collector ferry
Fox, John	tailor	Holder, Thomas H	mariner
Fawcett, Robert	fisherman	Hottendorf, Otto	do
Fawcett, George H	do	Holland, Felix	laborer
Fitzgerald, Richard	carp	Haley, Frank T	granite wkr
Fitzgerald, Thomas J	do	Harding, Theodore	laborer
Fox, John jr	polisher	Hamilton, Walter	mason
Foster, Raymond	mariner	Harding, Benjamin	millman
Forbes, Robinson B	teamster	Humphrey, Joseph	laborer
Faulkner, Albert A	granite wkr	Hurst, William S	millman
Fielder, Cornelius	seaman	Jennings, Stephen	chemist
Flinton, John	track master	Joyce, William	lab
Fullerton, Frederick	caulker	Jesso, Charles	stevedore
Fulton, William E	ship laborer	Jennings, John	laborer
Finlay, William H	clerk	Jennings, Robert	do
Grady, William J	surveyor	Johnson, Robert	engineer
Glasgow, Hugh	gent	Kirby, Daniel	carpenter
Glasgow, H Adam	sup't ferry	Kerrigan, Patrick	mariner
Griffith, Alexander	painter	Ketchum, James	do
Green, Thomas E	carpenter	Kindred, Reynolds	joiner
Green, Herbert	stevedore	Keirstead, Stephen F	agent
Gallagher, Francis	surveyor	Kerrigan, James	mariner
Gray, James	teamster	Kerrigan, John	do
Griffitt, Frank M	painter	Lander, Thomas W	carpenter
Gregory, Andrew C	surveyor	Lord, Wellington	fisherman
Gordon, John	grocer	Lee, Henry M	cooper
Gregg, Wilson	carp	Leonard, John C	clerk
Gallagher, James	do	Lee, Charles F	laborer
Gregory, J Alphonzo	millmn	Laracy, John	stevedore
Gallagher, William	stevedore		
Grady, Daniel J	seaman		

Thompson, Joseph clerk
Train, Lewis D laborer

Young, Edwin r r clerk
Young, Edward carpenter

Lunergan
Lemon, J
Lee, Rob
Langan,
Lee, Joh
Lee, Wil
Lander,
Leary, D
Lenahan
Lester, J
Levis, TH
Langan,
Lee, H P
Lord, Fre

Morrison
Murphy,
Murphy,
Maleman
Martin, I
Mahony,
Murphy,
Morrisey,
Morrish,
Maxwell
Morrison
Mulherri
Maloney,
Mailman
Manks, A
Morrison

McCaffre
McManu
McCorma
McLoon,
McLellan
McGuire
McKenn
McCarth
McAuley
McGrath
McDade,
McIntosh
McGarrig
McKinnc
McFadd
McPeake
McCaffre
McNeilly
McLeod,
McLean,
McLellan
McCastl
McIsaac,
McGill, I

Immergan, Benjamin	laborer	McAndrews, John P	laborer
Lemon, James S	blacksmith	McCastlin, James	do
Lee, Robert	laborer	McLellan, Henry	r r e
Langan, William	do	McBeath, George	mariner
Lee, John	do	McIntosh, Robert jr	stevedore
Lee, William	do	McLeod, George	clerk
Lander, John	carpenter	McLeod, Joseph	carpenter
Leary, Daniel	mariner	McLoon, Henry J	clerk
Lenahan, Hugh	laborer	McMillan, Cornelius	engin'r sh l
Lester, James L	seaman		
Levis, Thomas	moulder	Nichols, Samuel E	carpenter
Langan, William	millman	Nice, Frederick H	ferry capt
Lee, H Percy	fisherman	Nichol, E Hugh	teamster
Lord, Frederick	carpenter	Newcomb, Ezekiel	carpenter
		Nairros, Robert	granite wkr
Morrison, Hugh	carpenter	Nelson, George	seaman
Murphy, John	laborer		
Murphy, John M	carp	O'Brien, Joseph	harbor insp
Maleman, John A	letter carier	O'Hare, William	carpenter
Martin, Patrick	stevedore	O'Reilly, Thomas	teacher
Mahony, Daniel	mariner	O'Brien, Joseph	seaman
Murphy, Patrick	laborer	Ogden, Thomas	millman
Morrissey, Michael	stone cutter		
Morrish, John	moulder	Pike, Richard	yeoman
Maxwell, James E	laborer	Perry William H	joiner
Morrison, Charles J	teacher	Purdy, Stephen L	carp
Mulherrir, Andrew	carpenter	Purdy, William H	grocer
Maloney, George A	mariner	Price, John L	laborer
Mailman, Frederick	boat buildr	Pike, John Wesley	stevedore
Manks, Abraham	millman	Paterson, Frederick W	founder
Morrison, Alexander S	telegraphr	Pierce, John	laborer
		Pierce, George	do
McCaffrey, John	yeoman	Pierce, William	do
McManus, Felix	grocer	Pierce, David	do
McCormack, Bernard	yeoman	Price, Robert B	seaman
McLoon, James	surveyor	Peterson, Neil	watchman
McLellan, James,	carpenter	Pierce, Frank H	stevedore
McGuire, Samuel	stevedore	Pine, Charles	engineer shore line
McKenna, Thomas	engineer	Patchell, William	baker
McCarthy, William	laborer	Purdy, Arthur H,	fireman
McAuley, John	do		
McGrath, William D	mason	Quilty, John B	victualer
McDade, Daniel	mariner	Quinlan, George E	ferry emp
McIntosh, Robert	laborer	Quigley, William	tailor
McGarrigle, Edward	carpenter		
McKinnon, John	teacher	Robson, John	flour inspector
McFadden, Thomas	teamster	Russell, Matthew	laborer
McPeake, Francis J	r r c	Ring, John K	caulker
McCaffrey, John	ferry capt	Ring, Edward	laborer
McNeilly, Edward	stevedore	Ross, Elijah	carpenter
McLeod, Ezekiel	moulder	Roley, John	do
McLean, James A	clerk	Ring, John F	caulker
McLellan, Frederick	r r c	Ring, J Alfred	water supt
McCastlin, John	laborer	Ring, Levi F	carpenter
McIsaac, Angus	carpenter	Ring, Everitt J	caulker
McGill, Hugh	do	Richards, John R	yeoman

Roley, George	boat builder	Smullin, John	laborer
Retallick, Richard	carpenter	Snider, George	carpenter
Robson, John jr	stevedore	Saunders, Edward	laborer
Robson, W James	founder	Sevell, William	do
Robson, George	stevedore	Shoubridge, John	fisherman
Russell, Matthew jr	stonecutter		
Robson, William	engineer	Toole, Edward W	carp
Rooney, William	yeoman	Toole, James	do
Roley, Joseph W	carpenter	Toole, John H	boat builder
Reed, John F	seaman	Toole, James E	clerk
Russell, James	printer	Toole, Daniel G	carpenter
Roley, Henry	clerk	Toole, John H jr	fisherman
Reardon, William jr	machinist	Toole, Edward W jr	do
Reed, David	seaman	Taggart, John C	carpenter
Reardon, William P	laborer	Thompson, Enoch	teacher
Rogers, John J	r r e	Thompson, Joseph	laborer
Ring, Charles R	millwright	Thompson, William J S	r r e
Ring, Edward	caulker	Tippet, Vivian W	trader
Ring, William I	do	Tufts, David	mariner
Robinson, George	laborer	Trecarton, John E	seaman
Robinson, William	engineer	Thompson, Samuel	brakemnn
Rooney, David	fisherman		
Russell, George		Vail, Joseph W	fisherman
heir Julia L Russell		Vail, George N	clerk
Stackhouse, James O	Lyds sur	Wetmore, Edwin J	clerk
Spragg, Gideon	yeoman	Wilson, Jarvis	merchant
Shamper, Charles W	boat bldr	Watters, Benjamin	agent
Sullivan, Jeremiah	carp	Wilson, Samuel K	surveyor
Smith, Thomas J	laborer	Wilson, John	pondman
Shewbridge, Joseph	carpenter	Welsh, John	laborer
Sullivan, John	stevedore	Wilson, James	engineer
Sullivan, Patrick	carpenter	Wilson, George Y F	surveyor
Smith, William	watchman	Ward, John W	carpenter
Sullivan, Humphrey	laborer	Williams, James P	do
Smith, Albert C	merchant	Wheten, Edgar	joiner
Sherwood, Wilford H	grocer	Wilson, John R C	clerk
Sweeny, Patrick	founder	Watters, George	tinsmith
Sewell, Samuel M	stevedore	Wiley, Joseph	carpenter
Stackhouse, Charles J	carp	Walsh, Patrick	moulder
Sculley, William E	telegraphr	Watters, Samuel	druggist
Sheldon, Edward J	ins agent	Whipple, John R	painter
Smith, William J	laborer	Watson, David	r r e
Smith, Benjamin Franklin	grocer	Williams, Wesley	engineer
Seely, James D	dredg●emp	Whipple, James A	carpenter
Seely, John	laborer	Watters, George T	plumber
Seely, George D	mariner	Webb, Reid	laborer
Smith, William jr	r r e	Whipple, Robert	painter
Smith, Albert J	r r e	White, Benjamin	ship carp
Smith, John	mariner	Wylie, Robert F	lath sawyer
Smith, Richard	laborer	Williams, J Albert	farmer
Sleeth, John	foreman		
Sleeth, John jr	stonecuttér		
Stackhouse, Theodore	grocer	Young, Henry	mariner
Smith, William A	r r e		



