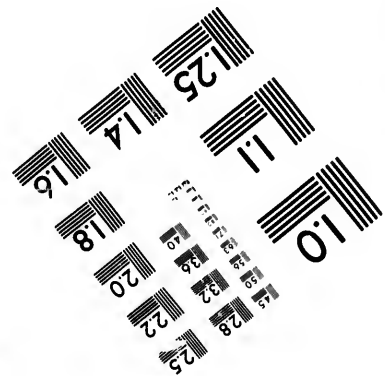
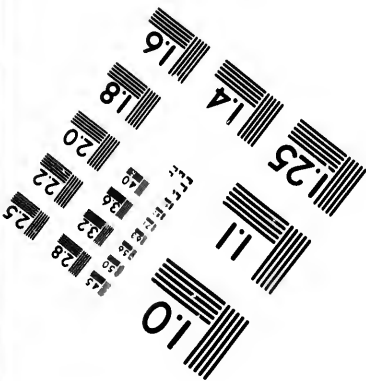
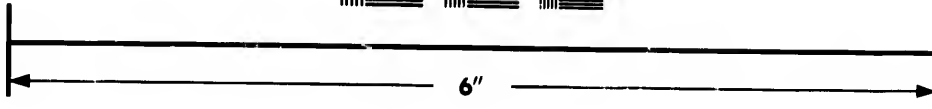
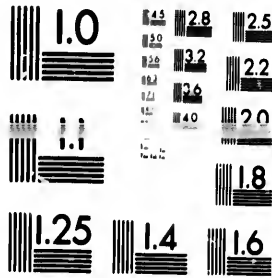


IMAGE EVALUATION TEST TARGET (MT-3)



Photographic
Sciences
Corporation

23 WEST MAIN STREET
WEBSTER, N.Y. 14580
(716) 872-4503

**CIHM/ICMH
Microfiche
Series.**

**CIHM/ICMH
Collection de
microfiches.**



Canadian Institute for Historical Microreproductions / Institut canadien de microreproductions historiques

© 1984

The institute has attempted to obtain the best original copy available for filming. Features of this copy which may be bibliographically unique, which may alter any of the images in the reproduction, or which may significantly change the usual method of filming, are checked below.

L'institut a tenté d'obtenir la meilleure copie originale disponible pour le filmage. Les caractéristiques de cette copie qui peuvent être bibliographiquement uniques, qui peuvent modifier n'importe quelle image dans la reproduction, ou qui peuvent modifier de manière significative la méthode habituelle de filmage, sont indiquées ci-dessous.

- Coloured covers/
Couverture de couleur
- Covers damaged/
Couverture endommagée
- Covers restored and/or laminated/
Couverture restaurée et/ou pelliculée
- Cover title missing/
Le titre de couverture manque
- Coloured maps/
Cartes géographiques en couleur
- Coloured ink (i.e. other than blue or black)/
Encre de couleur (i.e. autre que bleue ou noire)
- Coloured plates and/or illustrations/
Planches et/ou illustrations en couleur
- Bound with other material/
Relié avec d'autres documents
- Tight binding may cause shadows or distortion along interior margin/
La reliure serrée peut causer de l'ombre ou de la distorsion le long de la marge intérieure
- Blank leaves added during restoration may appear within the text. Whenever possible, these have been omitted from filming/
Il se peut que certaines pages blanches ajoutées lors d'une restauration apparaissent dans le texte, mais, lorsque cela était possible, ces pages n'ont pas été filmées.
- Additional comments:/
Commentaires supplémentaires:

-
-
-
-
-
-
-
-
-
-
-

This item is filmed at the reduction ratio checked below/
Ce document est filmé au taux de réduction indiqué ci-dessous.

10X				14X				18X				22X
										<input checked="" type="checkbox"/>		
				12X			16X			20X		

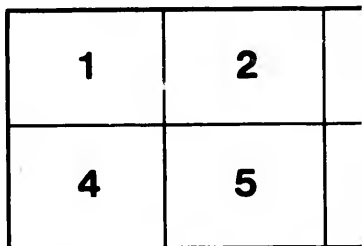
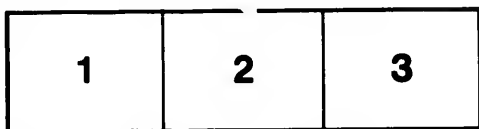
Metropolitan Toronto Library
Canadian History Department

The images appearing here are the best quality possible considering the condition and legibility of the original copy and in keeping with the filming contract specifications.

Original copies in printed paper covers are filmed beginning with the front cover and ending on the last page with a printed or illustrated impression, or the back cover when appropriate. All other original copies are filmed beginning on the first page with a printed or illustrated impression, and ending on the last page with a printed or illustrated impression.

The last recorded frame on each microfiche shall contain the symbol → (meaning "CONTINUED"), or the symbol ▼ (meaning "END"), whichever applies.

Maps, plates, charts, etc., may be filmed at different reduction ratios. Those too large to be entirely included in one exposure are filmed beginning in the upper left hand corner, left to right and top to bottom, as many frames as required. The following diagrams illustrate the method:



Les im
plus g
de la r
confo
filmag

Les ex
papier
par le
derniè
d'impr
plat, s
origin
premiè
d'impr
la der
empre

Un de
derniè
cas: le
symbo

Les ca
filmés
Lorsq
repro
de l'a
et de
d'im
illustr

Metropolitan Toronto Library
Canadian History Department

quality
legibility
the

Les images suivantes ont été reproduites avec le plus grand soin, compte tenu de la condition et de la netteté de l'exemplaire filmé, et en conformité avec les conditions du contrat de filmage.

re filmed
ng on
d impres-
e. All
g on the
pres-
printed

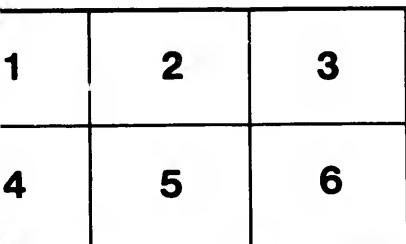
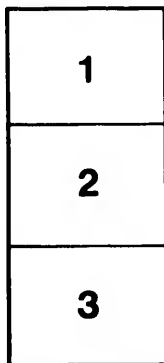
Les exemplaires originaux dont la couverture en papier est imprimée sont filmés en commençant par le premier plat et en terminant soit par la dernière page qui comporte une empreinte d'impression ou d'illustration, soit par le second plat, selon le cas. Tous les autres exemplaires originaux sont filmés en commençant par la première page qui comporte une empreinte d'impression ou d'illustration et en terminant par la dernière page qui comporte une telle empreinte.

che
"CON-
END"),

Un des symboles suivants apparaîtra sur la dernière image de chaque microfiche, selon le cas: le symbole → signifie "A SUIVRE", le symbole ∇ signifie "FIN".

d at
ge to be
ned
left to
s as
ate the

Les cartes, planches, tableaux, etc., peuvent être filmés à des taux de réduction différents. Lorsque le document est trop grand pour être reproduit en un seul cliché, il est filmé à partir de l'angle supérieur gauche, de gauche à droite, et de haut en bas, en prenant le nombre d'images nécessaire. Les diagrammes suivants illustrent la méthode.



MILITARY AND NAVAL

OFFICE OF THE SECRETARY OF STATE

LONDON

MY DEAR DEANE,

Having served at
during which you held the resp
my Command, I had the fulles
which you performed your duties
with that tact and firmness of
adapt you in my opinion for the
ever position in the public serv
endorse the favourable opinion
a gentleman.

I am only sorry that yo
prospects of promotion I am n
employment under the Crown.

Lieut. and Adjutant DEANE,
R.M.L.I.

TESTIMONIALS.

RICHARD BURTON DEANE,

RANK.....

ROYAL MARINE LIGHT INFANTRY.

AGE.....

Length of Service.....

from Colonel Sir F. W. FESTING, C.B., K.C.M.G.

Lieutenant R. B. Deane, Royal Marine Light Infantry, served on the Gold Coast during the latter part of the Ashanti war, and was engaged against the enemy while attached to the Naval Brigade.

When in command of a detachment I witnessed his manner in dealing with those under him, and can confidently say that I know of no officer more qualified to perform the special duties of an Adjutant: and I should say that his age, disposition, ability, and general bearing eminently fit him for such a post at the present time.

(Signed) FRANCIS W. FESTING,

Bt. Colonel R. M. Artillery.

EASTNEY BARRACKS,

24th January, 1875.

Extract from a letter from Major General J. W. A. KENNEDY, R.M.L.I.,

9th February, 1878.

MY DEAR DEANE,

* * * * *

I cannot conclude without most sincerely thanking you for the valuable assistance you rendered me in the office during the period I was in command of the Chatham Division.

Your extensive knowledge of the service in all the varied details of your important duties I have rarely seen equalled and never surpassed; whilst the very assiduous manner in which those duties were *at all times* performed left absolutely nothing to be desired and merit my warmest acknowledgments.

&c., &c.,

(Signed) J. W. A. KENNEDY.

B., K.C.M.G.
ry, served on the
gaged against the

r in dealing with
er more qualified
say that his age,
uch a post at the

G,
R. M. Artillery.

R.M.L.I.,
y, 1878.

r you for the
riod I was in

details of your
hilst the very
left absolutely

KENNEDY.

Wath, near Ripon,
16th October, 1878.

I have known Lieutenant and Adjutant Deane for many years, a part of which time he served under my command as Adjutant of the Chatham Division of Royal Marines.

I have never met an officer more thoroughly acquainted with the details of the service in every respect, and in whom I could place more implicit reliance in the performance of his duties, more particularly those attached to an Adjutant. I consider him a young officer of unusual administrative ability, and one in whom the greatest confidence can be placed when command, responsibility and trust are of the utmost importance. His manner and private character have always been such as to win for him the esteem of those who have been in any way connected with him in the service.

(Signed) PEREGRINE HENRY FELLOWES,
Major General R.M.L.I.

Royal Marine Barracks,
Chatham, 27th June, 1879.

During the 18 months of my command of this Division, Lieutenant and Adjutant R. Burton Deane has been Office Adjutant. I have great pleasure in bearing testimony to his zeal and ability during that period, and in thus stating my opinion of his very high capacity as an Officer—he is capable of conducting correspondence and is of very sound judgment, possessing a surprising knowledge of the service, and a great gift of conveying a very great deal in few words, and those always to the point.

As my confidential Officer, he has been at all times reliable, and as my friend and brother Officer, I cannot speak too highly of his upright and gentlemanlike bearing.

(Signed) E. L. PYM,
Major General,
Royal Marines.

Fort Clarence House,

Rochester, 20th December, 1880.

My Dear DEANE,

Having served at the Chatham Division with you for several years during which you held the responsible position of Adjutant, part of that time under my Command, I had the fullest opportunity of observing the admirable manner in which you performed your duties. Your knowledge of drill and discipline, combined with that tact and firmness of character which I know you to possess, particularly adapt you in my opinion for the post you are seeking, and I feel assured that whatever position in the public service you may occupy, your superiors will not fail to endorse the favourable opinion I express of your qualifications as an Officer and a gentleman.

I am only sorry that you think of leaving the Corps, but with the present prospects of promotion I am not surprised at your endeavouring to obtain other employment under the Crown.

Believe me,

Yours very sincerely,

G. W. FORBES.

Lieut. and Adjutant DEANE,

R.M.L.I.

