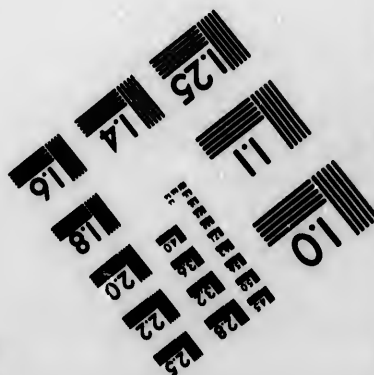
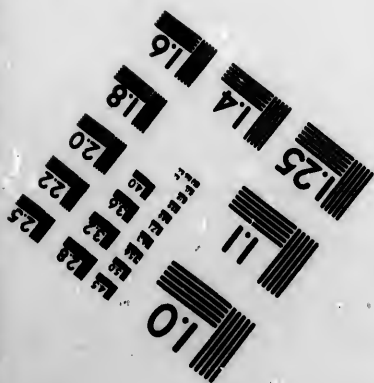
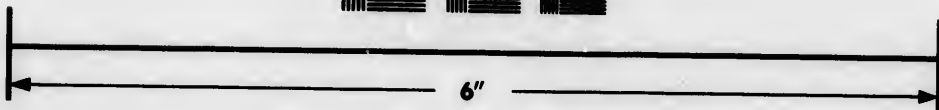
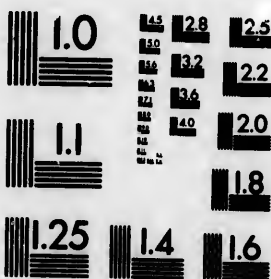


**IMAGE EVALUATION
TEST TARGET (MT-3)**



**Photographic
Sciences
Corporation**

23 WEST MAIN STREET
WEBSTER, N.Y. 14590
(716) 872-4503

1.8
2.0
2.2
2.5
2.8
3.2
3.6

**CIHM/ICMH
Microfiche
Series.**

**CIHM/ICMH
Collection de
microfiches.**



Canadian Institute for Historical Microreproductions / Institut canadien de microreproductions historiques

10
01

© 1983

Technical and Bibliographic Notes/Notes techniques et bibliographiques

The Institute has attempted to obtain the best original copy available for filming. Features of this copy which may be bibliographically unique, which may alter any of the images in the reproduction, or which may significantly change the usual method of filming, are checked below.

L'Institut a microfilmé le meilleur exemplaire qu'il lui a été possible de se procurer. Les détails de cet exemplaire qui sont peut-être uniques du point de vue bibliographique, qui peuvent modifier une image reproduite, ou qui peuvent exiger une modification dans la méthode normale de filmage sont indiqués ci-dessous.

- Coloured covers/
Couverture de couleur
- Covers damaged/
Couverture endommagée
- Covers restored and/or laminated/
Couverture restaurée et/ou pelliculée
- Cover title missing/
Le titre de couverture manque
- Coloured maps/
Cartes géographiques en couleur
- Coloured ink (i.e. other than blue or black)/
Encre de couleur (i.e. autre que bleue ou noire)
- Coloured plates and/or illustrations/
Planches et/ou illustrations en couleur
- Bound with other material/
Relié avec d'autres documents
- Tight binding may cause shadows or distortion along interior margin/
La reliure serrée peut causer de l'ombre ou de la distorsion le long de la marge intérieure
- Blank leaves added during restoration may appear within the text. Whenever possible, these have been omitted from filming/
Il se peut que certaines pages blanches ajoutées lors d'une restauration apparaissent dans le texte, mais, lorsque cela était possible, ces pages n'ont pas été filmées.
- Additional comments:/
Commentaires supplémentaires:

- Coloured pages/
Pages de couleur
- Pages damaged/
Pages endommagées
- Pages restored and/or laminated/
Pages restaurées et/ou pelliculées
- Pages discoloured, stained or foxed/
Pages décolorées, tachetées ou piquées
- Pages detached/
Pages détachées
- Showthrough/
Transparence
- Quality of print varies/
Qualité inégale de l'impression
- Includes supplementary material/
Comprend du matériel supplémentaire
- Only edition available/
Seule édition disponible
- Pages wholly or partially obscured by errata slips, tissues, etc., have been refilmed to ensure the best possible image/
Les pages totalement ou partiellement obscurcies par un feuillet d'errata, une pelure, etc., ont été filmées à nouveau de façon à obtenir la meilleure image possible.

This item is filmed at the reduction ratio checked below/
Ce document est filmé au taux de réduction indiqué ci-dessous.

| | | | | | | | | | | | |
|-----|-----|-----|-----|-----|-----|-----|-----|-----|-----|-----|-----|
| 10X | 12X | 14X | 16X | 18X | 20X | 22X | 24X | 26X | 28X | 30X | 32X |
| | | | | | ✓ | | | | | | |

The copy filmed here has been reproduced thanks to the generosity of:

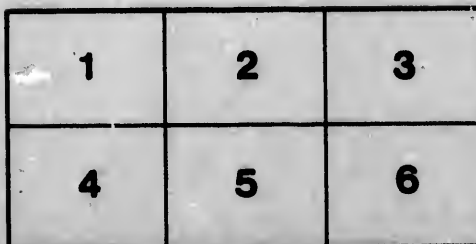
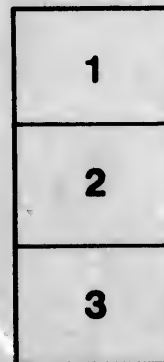
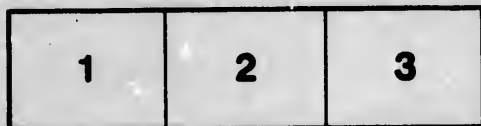
Laurentian University
Sudbury

The images appearing here are the best quality possible considering the condition and legibility of the original copy and in keeping with the filming contract specifications.

Original copies in printed paper covers are filmed beginning with the front cover and ending on the last page with a printed or illustrated impression, or the back cover when appropriate. All other original copies are filmed beginning on the first page with a printed or illustrated impression, and ending on the last page with a printed or illustrated impression.

The last recorded frame on each microfiche shall contain the symbol \rightarrow (meaning "CONTINUED"), or the symbol ∇ (meaning "END"), whichever applies.

Maps, plates, charts, etc., may be filmed at different reduction ratios. Those too large to be entirely included in one exposure are filmed beginning in the upper left hand corner, left to right and top to bottom, as many frames as required. The following diagrams illustrate the method:



L'exemplaire filmé fut reproduit grâce à la générosité de:

Université Laurentienne
Sudbury

Les images suivantes ont été reproduites avec le plus grand soin, compte tenu de la condition et de la netteté de l'exemplaire filmé, et en conformité avec les conditions du contrat de filmage.

Les exemplaires originaux dont la couverture en papier est imprimée sont filmés en commençant par le premier plat et en terminant soit par la dernière page qui comporte une empreinte d'impression ou d'illustration, soit par le second plat, selon le cas. Tous les autres exemplaires originaux sont filmés en commençant par la première page qui comporte une empreinte d'impression ou d'illustration et en terminant par la dernière page qui comporte une telle empreinte.

Un des symboles suivants apparaîtra sur la dernière image de chaque microfiche, selon le cas: le symbole \rightarrow signifie "A SUIVRE", le symbole ∇ signifie "FIN".

Les cartes, planches, tableaux, etc., peuvent être filmés à des taux de réduction différents. Lorsque le document est trop grand pour être reproduit en un seul cliché, il est filmé à partir de l'angle supérieur gauche, de gauche à droite, et de haut en bas, en prenant le nombre d'images nécessaire. Les diagrammes suivants illustrent la méthode.

ails
du
diffler
une
nage

rrata
to

pelure,
n à

32X

1090

CHECK-LIST

OF

NORTH AMERICAN BIRDS

ACCORDING TO THE CANONS OF NOMENCLATURE

OF THE

AMERICAN ORNITHOLOGISTS' UNION

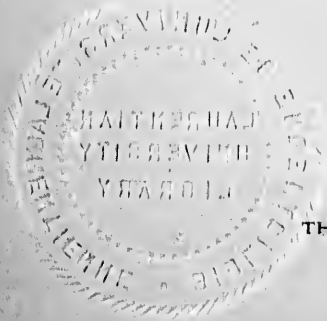
ABRIDGED EDITION
REVISED

PUBLISHED BY THE AMERICAN ORNITHOLOGISTS' UNION

1889



COPYRIGHT
BY
AMERICAN ORNITHOLOGISTS' UNION
1889



THE LAW REPORTER PRINT
Washington, D. C.

h
t
th
I
f
C
in
o
n

a
p
w
to
th
th
w
ag
C
ha
th

PREFACE

At the Sixth Congress of the American Ornithologists' Union, held in Washington, D. C., November 13-15, 1888, it was decided to publish a Supplement to the A. O. U. Check-List, to include the species and subspecies added since the publication of the Check-List, and the eliminations and changes in nomenclature thus far found necessary, and also to publish an abridged edition of the Check-List with the additions and changes made in the Supplement interpolated in their proper places, this abridged edition to contain only the scientific names, English names, concordance, and current numbers.

The labor of revising the status of the species and subspecies added or eliminated, and the emendations of nomenclature proposed since the publication of the A. O. U. Code and Check-List, was delegated to the Committee on Publication, with instructions to publish the results of its work in the way above indicated, at the earliest practicable date. Immediately after the adjournment of the Union the Committee held several meetings, the results of which will be given in full in the Supplement. The additions and changes agreed to by the Committee are embodied in the present abridged Check-List. In making the necessary interpolations the Committee has been governed by the following recommendation contained in the Code (p. 14, Section 4):

That any subsequent additions to the list be interpolated in systematic order, and bear the number of the species immediately preceding, with the addition of a figure (1, 2, etc., as the case may require), separated from the original number by a period or decimal point, thus giving the interpolated number a decimal form (*e. g.*, 243.1, etc.), in order that the original numbers may be permanent.

For the convenience of those who may not have the original edition of the A. O. U. Check-List, it may be stated that the concordance gives the equivalent numbers of previous check-lists, in chronological order: B=Baird, 1858; C=Coues, 1873; R=Ridgway, 1880; C=Coues, 1882.

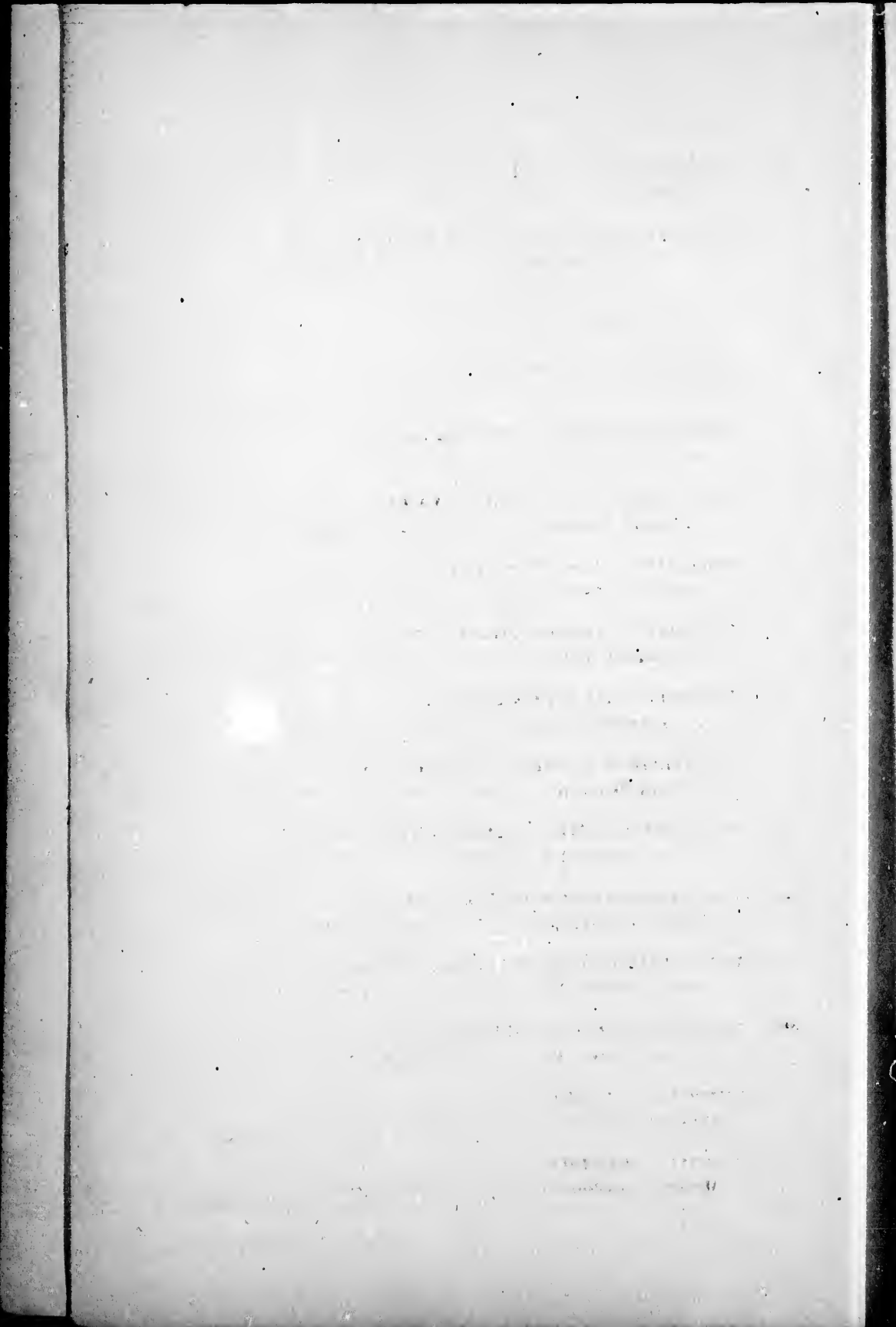
In the present edition the list of Fossil Birds has been omitted, and a list of Naturalized Species has been added.

J. A. ALLEN,
WILLIAM BREWSTER,
ELLIOTT COUES,
C. HART MERRIAM,
ROBERT RIDGWAY,
Committee on Publication.

7-11 *Gavia* - see *auth* XVI - p. 98.

CHECK-LIST

1. **ÆCHMOPHORUS OCCIDENTALIS** (LAWR.).
Western Grebe. [B 704, C 608, R 729, C 845.]
2. **COLYMBUS HOLBÆLLII** (REINH.).
Holbæll's Grebe. [B 702, C 610, R 731, C 847.]
3. **COLYMBUS AURITUS** LINN.
Horned Grebe. [B 706, C 611, R 732, C 848.]
4. **COLYMBUS NIGRICOLLIS CALIFORNICUS** (HEERM.).
American Eared Grebe. [B 707, C 612, R 733a, C 850.]
5. **COLYMBUS DOMINICUS** LINN.
St. Domingo Grebe. [B 708a, C 613, R 734, C 851.]
6. **PODILYMBUS PODICEPS** (LINN.).
Pied-billed Grebe. [B 709, C 614, R 735, C 852.]
7. **URINATOR IMBER** (GUNN.).
Loon. [B 698, C 605, R 736, C 840.]
8. **URINATOR ADAMSII** (GRAY).
Yellow-billed Loon. [B —, C 605a, R 737, C 841.]
9. **URINATOR ARCTICUS**^a (LINN.).
Black-throated Loon. [B 699, C 606, R 738, C 842.]
10. **URINATOR PACIFICUS**^a (LAWR.).
Pacific Loon. [B 700, C 606a, R 739, C 843.]
11. **URINATOR LUMME** (GUNN.).
Red-throated Loon. [B 701, C 607, R 740, C 844.]
12. **LUNDA CIRRHATA** PALL.
Tufted Puffin. [B 712, 716, C 619, R 745, C 856.]



13. **FRATERCULA ARCTICA** (LINN.).
Puffin. [B 715, C 618, R 743, C 854.]
- 13a. **FRATERCULA ARCTICA GLACIALIS** (TEMM.).
Large-billed Puffin. [B 714, C 618a, R 743a, C 855.]
14. **FRATERCULA CORNICULATA** (NAUM.).
Horned Puffin. [B 713, C 617, R 744, C 853.]
15. **CERORHINCA MONOCERATA** (PALL.).
Rhinoceros Auklet. [B 717, 718, C 620, R 746, C 857.]
16. **PTYCHORAMPHUS ALEUTICUS** (PALL.).
Cassin's Auklet. [B 724, C 625, R 751, C 862.]
17. **CYCLORRHYNCHUS PSITTACULUS** (PALL.).
Paroquet Auklet. [B 725, C 621, R 747, C 858.]
18. **SIMORHYNCHUS CRISTATELLUS** (PALL.).
Crested Auklet. [B 719, 720, C 622, R 748, C 859.]
19. **SIMORHYNCHUS PYGMÆUS** (GMEL.).
Whiskered Auklet. [B 721, C 623, R 749, C 860.]
20. **SIMORHYNCHUS PUSILLUS** (PALL.).
Least Auklet. [B 722, 723, C 624, R 750, C 861.]
21. **SYNTHLIBORAMPHUS ANTIQUUS** (GMEL.).
Ancient Murrelet. [B 734, 736, C 627, R 753, 759, C 864, 870.]
23. **BRACHYRAMPHUS MARMORATUS** (GMEL.).
Marbled Murrelet. [B 732, 733, C 629, R 755, C 866.]
24. **BRACHYRAMPHUS KITTLITZII** BRANDT.
Kittlitz's Murrelet. [B 735, C 630, R 756, C 867.]
25. **BRACHYRAMPHUS HYPOLEUCUS** XANTUS.
Xantus's Murrelet. [B —, C —, R 757, C 868.]
26. **BRACHYRAMPHUS CRAVERI** (SALVAD.).
Craver's Murrelet. [B —, C —, R 758, C 869.]
27. **CEPPHUS GRYLLE** (LINN.).
Black Guillemot. [B 726, *part*, C 631, *part*,
R 760, *part*, C 871, *part*.]
28. **CEPPHUS MANDTHI** (LICHT.).
Mandt's Guillemot. [B 726, *part*, C 631, *part*,
R 760, *part*, C 871, *part*.]

39.

Pagophila

29. **CEPPHUS COLUMBA** PALL.
Pigeon Guillemot. [B 727, C 632, R 761, C 872.]
30. **URIA TROILE** (LINN.).
Murre. [B 729, 730, C 634, R 763, C 874.]
- 30a. **URIA TROILE CALIFORNICA** (BRYANT).
California Murre. [B —, C —, R 763a, C 875.]
31. **URIA LOMVIA** (LINN.).
Brünnich's Murre. [B 731, C 635, R 764a, C 876.]
- 31a. **URIA LOMVIA ARRA** (PALL.).
Pallas's Murre. [B —, C —, R 764, C —.]
32. **ALCA TORDA** LINN.
Razor-billed Auk. [B 711, C 616, R 742, C 877.]
33. **PLAUTUS IMPENNIS** (LINN.).
Great Auk. [B 710, C 615, R 741, C 878.]
34. **ALLE ALLE** (LINN.).
Dovekie. [B 738, C 626, R 752, C 863.]
35. **MEGALESTRIS SKUA** (BRÜNN.).
Skua. [B 652, C 539, R 696, C 764.]
36. **STERCORARIUS POMARINUS** (TEMMIN.).
Pomarine Jaeger. [B 653, C 540, R 697, C 765.]
37. **STERCORARIUS PARASITICUS** (LINN.).
Parasitic Jaeger. [B 654, C 541, R 698, C 766.]
38. **STERCORARIUS LONGICAUDUS** VIEILL.
Long-tailed Jaeger. [B 655, C 542, R 699, C 767.]
39. **GAVIA ALBA** (GUNN.).
Ivory Gull. [B 676, 677, C 550, R 657, C 785.]
40. **RISSA TRIDACTYLA** (LINN.).
Kittiwake. [B 672, C 552, R 658, C 782.]
- 40a. **RISSA TRIDACTYLA POLLICARIS** RIDGW.
Pacific Kittiwake. [B —, C 552a, R 658a, C 783.]
41. **RISSA BREVIROSTRIS** (BRUCH).
Red-legged Kittiwake. [B 674, 675, C 553, R 659, C 784.]

[Faint, illegible text covering the majority of the page]

[5

5

53

55

58

54

55

42. **LARUS GLAUCUS** BRÜNN.
Glaucous Gull. [B 656, C 543, R 660, C 768.]
- 42.1 **LARUS BARROVIANUS** RIDGW.
Point Barrow Gull. [B —, C —, R —, C —.]
43. **LARUS LEUCOPTERUS** FABER.
Iceland Gull. [B 658, C 544, R 661, C 769.]
44. **LARUS GLAUCESCENS** NAUM.
Glaucous-winged Gull. [B 657, 659, C 545, R 662, C 770.]
45. **LARUS KUMLIENI** BREWST.
Kumlien's Gull. [B —, C —, R —, C —.]
46. **LARUS NELSONI** HENSH.
Nelson's Gull. [B —, C —, R —, C —.]
47. **LARUS MARINUS** LINN.
Great Black-backed Gull. [B 660, C 546, R 663, C 771.]
48. **LARUS SCHISTISAGUS** STEJN. †
Slaty-backed Gull. [B —, C —, R —, C —.]
49. **LARUS OCCIDENTALIS** AUD.
Western Gull. [B 662, C 547*b*, R 664, C 774.]
- [50.] **LARUS AFFINIS** REINH.
Siberian Gull. [B —, C —, R 665, C 776.]
51. **LARUS ARGENTATUS** BRÜNN.
Herring Gull. [B —, C 547, R 666, C 772.]
- 51*a*. **LARUS ARGENTATUS SMITHSONIANUS** COUES.
American Herring Gull. [B 661, C 547*a*, R 666*a*, C 773.]
52. **LARUS VEGÆ** (PALMÉN).
Vega Gull. [B —, C —, R 667, C 775.]
53. **LARUS CALIFORNICUS** LAWR.
California Gull. [B 663, C 548*a*, R 668, C 777.]
54. **LARUS DELAWARENSIS** ORD.
Ring-billed Gull. [B 664, C 548, R 669, C 778.]
55. **LARUS BRACHYRHYNCHUS** RICH.
Short-billed Gull. [B 665, 673, C 549, R 670, C 780.]

64. *S. caspia* Pallas.

- [56.] **LARUS CANUS** LINN.
Mew Gull. [B —, C —, R 671, C 779.]
57. **LARUS HEERMANNI** CASS.
Heermann's Gull. [B 666, C 551, R 672, C 781.]
58. **LARUS ATRICILLA** LINN.
Laughing Gull. [B 667, C 554, R 673, C 786.]
59. **LARUS FRANKLINII** SW. & RICH.
Franklin's Gull. [B 668, 669, C 555, R 674, C 787.]
60. **LARUS PHILADELPHIA** (ORD).
Bonaparte's Gull. [B 670, C 556, R 675, C 788.]
- 60.1 **LARUS MINUTUS** PALL.
Little Gull. [B —, C —, R —, C —.]
61. **RHODOSTETHIA ROSEA** (MACGILL.).
Ross's Gull. [B 678, C 557, R 676, C 789.]
62. **XEMA SABINII** (SAB.).
Sabine's Gull. [B 680, C 558, R 677, C 790.]
63. **GELOCHELIDON NILOTICA** (HASSELLQ.).
Gull-billed Tern. [B 681, C 560, R 679, C 792.]
64. **STERNA TSCHIEGRAVA** ~~LINNEH.~~
Caspian Tern. [B 682, C 561, R 680, C 793.]
65. **STERNA MAXIMA** BODD.
Royal Tern. [B 683, C 562, R 681, C 794.]
66. **STERNA ELEGANS** GAMB.
Elegant Tern. [B 684, C 563, R 682, C 795.]
67. **STERNA SANDVICENSIS ACUFLAVIDA** (CABOT).
Cabot's Tern. [B:685, C 564, R 683, C 796.]
- [68.] **STERNA TRUDEAUI** AUD.
Trudeau's Tern. [B 687, C 571, R 684, C 802.]
69. **STERNA FORSTERI** NUTT.
Forster's Tern. [B 691, 686, C 566, R 685, C 798.]
70. **STERNA HIRUNDO** LINN.
Common Tern. [B 689, C 565, R 686, C 797.]

82.1 *D. immutabilis* Rothsch. Laysan Albatross

82

71. **STERNA PARADISÆA** BRÜNN.
Arctic Tern. [B 690, 693, C 567, 568, R 687, C 799.]
72. **STERNA DOUGALLI** MONTAG.
Roseate Tern. [B 692, C 569, R 688, C 800.]
73. **STERNA ALEUTICA** BAIRD.
Aleutian Tern. [B —, C 572, R 689, C 803.]
74. **STERNA ANTILLARUM** (LESS.).
Least Tern. [B 694, C 570, R 690, C 801.]
75. **STERNA FULIGINOSA** GMEL.
Sooty Tern. [B 688, C 573, R. 691, C 804.]
- [76.] **STERNA ANÆTHETUS** SCOP.
Bridled Tern. [B —, C 574, R 692, C 805.]
77. **HYDROCHELIDON NIGRA SURINAMENSIS** (GMEL.).
Black Tern. [B 695, C 575, R 693, C 806.]
- [78.] **HYDROCHELIDON LEUCOPTERA** (MEISN. & SCHINZ).
White-winged Black Tern. [B —, C 575 *bis*, R 694, C 807.]
79. **ANOUS STOLIDUS** (LINN.).
Noddy. [B 696, C 576, R 695, C 808.]
80. **RYNCHOPS NIGRA** LINN.
Black Skimmer. [B 697, C 577, R 656, C 809.]
81. **DIOMEDEA NIGRIPES** AUD.
Black-footed Albatross. [B —, C 579, R 700, C 811.]
82. **DIOMEDEA ALBATRUS** PALL.
Short-tailed Albatross. [B 631, C 578, R 701, C 810.]
- 82.1
- [83.] **THALASSOGERON CULMINATUS** (GOULD).
Yellow-nosed Albatross. [B 632, C —, R 702, C —.]
84. **PHŒBETRIA FULIGINOSA** (GMEL.).
Sooty Albatross. [B 633, C 580, R 703, C 812.]
- [85.] **OSSIFRAGA GIGANTEA** (GMEL.).
Giant Fulmar. [B 634, C 581, R 704, C 813.]
86. **FULMAREUS GLACIALIS** (LINN.).
Fulmar. [B 635, C 582, R 705, C 814.]

87. *Priocella*

89. *P. gravis* (O'Reilly).

[92.] *P. assimilis* Gould - Allied Shearwater

93. *P. opisthomelas* Coarx.

93.1 *P. auricularis* C.H. Townsend

94. *P. fuliginosus* Strickland

[97.] *Priofinus*

- 86a. **FULMARIUS GLACIALIS MINOR** KJÆRBØLLING.
Lesser Fulmar. [B —, C —, R —, C —.]
- 86b. **FULMARIUS GLACIALIS GLUPISCHA** STRJN.
Pacific Fulmar. [B 636, C 582a, R 705a, C 815.]
- 86c. **FULMARIUS GLACIALIS RODGERSII** (CASS.).
Rodgers's Fulmar. [B —, C 582b, R 705b, C 816.]
87. ~~**FULMARIUS GLACIALOIDES**~~ (SMITH).
Slender-billed Fulmar. [B 637, C 583, R 706, C 817.]
88. **PUFFINUS BOREALIS** CORY.
Cory's Shearwater. [B —, C —, R —, C 888.]
89. **PUFFINUS MAJOR** ~~FABR.~~
Greater Shearwater. [B 647, C 597, R 709, C 832.]
- [90.] **PUFFINUS PUFFINUS** (BRÜNN.).
Manx Shearwater. [B 649, C 599, R 711, C 834.]
91. **PUFFINUS CREATOPUS** COUES.
Pink-footed Shearwater. [B —, C 598, R 710, C 833.]
92. **PUFFINUS AUDUBONI** FINSCH.
Audubon's Shearwater. [B 650, C 600, R 712, C 835.]
- [92.1] 93. **PUFFINUS GAVIA** ~~(FORST.)~~
Black-vented Shearwater. [B —, C 601, R 713, C 836.]
- 93.1 94. **PUFFINUS STRICKLANDI** ~~RIDGW.~~
Sooty Shearwater. [B 648, C 602, R 714, C 837.]
95. **PUFFINUS GRISEUS** (GMEL.).
Dark-bodied Shearwater. [B —, C 603, R 715, C 838.]
96. **PUFFINUS TENUIROSTRIS** (TEMM.).
Slender-billed Shearwater. [B —, C 604, R 716, C 839.]
- [97.] ~~**PUFFINUS CINEREUS**~~ (GMEL.).
Black-tailed Shearwater. [B 651, C 595, R 707, C 830.]
- [98.] **ÆSTRELATA HASITATA** (KUHLE).
Black-capped Petrel. [B 638, C 585, R 717, C 819.]
- [99.] **ÆSTRELATA SCALARIS** BREWST.
Scaled Petrel. [B —, C —, R —, C 887.]

105.2 O. *kaedingi* Anthony Kaeding Petrel.
[106.2] O. *cryptoleucura* (Piedgw.) Hawaiian Petrel

108.1. O. *socorroensis* Townsend.

[110.] *Fregatta*

112. P. *americanus* Grant

[113.1] P. *rubricaudus* Bodd. Red-tailed Tropic Bird

100. **ÆSTRELATA FISHERI** RIDGW.

Fisher's Petrel. [B —, C —, R —, C —.]

[101.] **BULWERIA BULWERI** (JARD. & SELBY).

Bulwer's Petrel. [B —, C —, R 718, C 820.]

[102.] **DAPTION CAPENSIS** (LINN.).

Pintado Petrel. [B 639, C 584, R 719, C 818.]

103. **HALOCYPTENA MICROSOMA** COUES.

Least Petrel. [B —, C 586, R 720, C 821.]

104. **PROCELLARIA PELAGICA** LINN.

Stormy Petrel. [B 645, C 587, R 721, C 822.]

105. **OCEANODROMA FURCATA** (GMEI.).

Fork-tailed Petrel. [B 640, C 591, R 726, C 826.]

105.2

106. **OCEANODROMA LEUCORHOA** (VIEILL.).

Leach's Petrel. [B 642, C 588, R 723, C 823.]

106.1 **OCEANODROMA MACRODACTYLA** BRYANT.

[106.2]

Guadaloupe Petrel. [B —, C —, R —, C —.]

107. **OCEANODROMA MELANIA** (BONAP.).

Black Petrel. [B —, C 589, R 724, C 824.]

108. **OCEANODROMA HOMOCHROA** (COUES).

108.1

Ashy Petrel. [B 643, C 590, R 725, C 825.]

109. **OCEANITES OCEANICUS** (KUHLE).

Wilson's Petrel. [B 644, C 593, R 722, C 828.]

[110.] ~~CYMODROMA~~ **GRALLARIA** (VIEILL.).

White-bellied Petrel. [B 646, C 594, R 728, C 829.]

[111.] **PELAGODROMA MARINA** (LATH.).

White-faced Petrel. [B —, C —, R —, C —.]

112. **PHAËTHON FLAVIROSTRIS** BRANDT.

Yellow-billed Tropic Bird. [B 629, C 538, R 654, C 763.]

113. **PHAËTHON ÆTHEREUS** LINN.

[113.1]

Red-billed Tropic Bird. [B —, C —, R 655, C 762.]

[114.] **SULA CYANOPS** SUND.

Blue-faced Booby. [B —, C —, R 651, C —.]

114.1. *S. nebourxii* Milne-Edwards.

- 114.1 **SULA GOSSII** ~~Ridgw.~~
Blue-footed Booby. [B —, C —, R —, C —.]
115. **SULA SULA** (LINN.).
Booby. [B 618, C 525, R 652, C 747.]
- 115.1 **SULA BREWSTERI** GOSS.
Brewster's Booby. [B —, C —, R —, C —.]
- [116.] **SULA PISCATOR** (LINN.).
Red-footed Booby. [B —, C —, R 653, C —.]
117. **SULA BASSANA** (LINN.).
Gannet. [B 617, C 524, R 650, C 746.]
118. **ANHINGA ANHINGA** (LINN.).
Anhinga. [B 628, C 536, R 649, C 760.]
119. **PHALACROCORAX CARBO** (LINN.).
Cormorant. [B 620, C 528, R 642, C 750.]
120. **PHALACROCORAX DILOPHUS** (SW. & RICH.).
Double-crested Cormorant. [B 623, C 530, R 643, C 751.]
- 120a. **PHALACROCORAX DILOPHUS FLORIDANUS** (AUD.).
Florida Cormorant. [B 624, C 530a, R 643a, C 753.]
- 120b. **PHALACROCORAX DILOPHUS CINCINATUS** (BRANDT).
White-crested Cormorant. [B 622, C 529, R 643b, C 752.]
- 120c. **PHALACROCORAX DILOPHUS ALBOCILIATUS** RIDGW.
Farallone Cormorant. [B —, C —, R —, C —.]
121. **PHALACROCORAX MEXICANUS** (BRANDT).
Mexican Cormorant. [B 625, C 531, R 644, C 754.]
122. **PHALACROCORAX PENICILLATUS** (BRANDT).
Brandt's Cormorant. [B 626, C 532, R 645, C 755.]
123. **PHALACROCORAX PELAGICUS** PALL.
Pelagic Cormorant. [B —, C —, R —, C —.]
- 123a. **PHALACROCORAX PELAGICUS ROBUSTUS** RIDGW.
Violet-green Cormorant. [B 627, C 535, R 646, C 758.]
- 123b. **PHALACROCORAX PELAGICUS RESPLENDENS** (AUD.).
Baird's Cormorant. [B —, C —, R 646a, C 759.]

[131.1.] *Mergus albellus* Linn.

134a *Anas fulvigula maculosa* (Senn)
Mottled Duck.

135- *Chaulelasmus*

136-137 *Mareca*

[138.] *Nettion*

139. "

[131

124. **PHALACROCORAX URILE** (GMEL.).
Red-faced Cormorant. [B —, C 534, R 647, C 757.]
125. **PELECANUS ERYTHORHYNCHOS** GMEL.
American White Pelican. [B 615, C 526, R 640, C 748.]
126. **PELECANUS FUSCUS** LINN.
Brown Pelican. [B 616, C 527, R 641, C 749.]
127. **PELECANUS CALIFORNICUS** RIDGW.
California Brown Pelican. [B —, C —, R —, C —.]
128. **FREGATA AQUILA** (LINN.).
Man-o'-War Bird. [B 619, C 537, R 639, C 761.]
129. **MERGANSER AMERICANUS** (CASS.).
American Merganser. [B 611, C 521, R 636, C 743.]
130. **MERGANSER SERRATOR** (LINN.).
Red-breasted Merganser. [B 612, C 522, R 637, C 744.]
- [131.] 131. **LOPHODYTES CUCULLATUS** (LINN.).
Hooded Merganser. [B 613, C 523, R 638, C 745.]
132. **ANAS BOSCHAS** LINN.
Mallard. [B 576, C 488, R 601, C 707.]
133. **ANAS OBSCURA** GMEL.
Black Duck. [B 577, C 489, R 602, C 708.]
134. **ANAS FULVIGULA** RIDGW.
Florida Duck. [B —, C 489a, R 603, C 709.]
- 134 a
135. ~~ANAS~~ ^{us} **STREPERA** (LINN.).
Gadwall. [B 584, C 491, R 604, C 711.]
136. ~~ANAS~~ **PENELOPE** (LINN.).
Widgeon. [B 586, C 492, R 606, C 712.]
137. ~~ANAS~~ **AMERICANA** (GMEL.).
Baldpate. [B 585, C 493, R 607, C 713.]
- [138.] ~~ANAS~~ **CRECCA** (LINN.).
European Teal. [B 580, C 494, R 611, C 714.]
139. ~~ANAS~~ **CAROLINENSIS** (GMEL.).
Green-winged Teal. [B 579, C 495, R 612, C 715.]

140-141 *Querquedula*

[141.1.] *Casarea casarca* (Linn.).

[141.]

151. } *Clangula clangula americana* Bonap.
152. } *Clangula islandica* (Gmel.).

154. *Harelda hyemalis* (Linn.).

140. ~~ANAS DISCORS~~ (LINN.).
Blue-winged Teal. [B 581, C 496, R 609, B 716.]
- [141.1.] 141. ~~ANAS CYANOPTERA~~ (VIEILL.).
Cinnamon Teal. [B 582, C 497, R 610, C 717.]
142. SPATULA CLYPEATA (LINN.).
Shoveller. [B 583, C 498, R 608, C 718.]
143. DAFILA ACUTA (LINN.).
Pintail. [B 578, C 490, R 605, C 710.]
144. AIX SPONSA (LINN.).
Wood Duck. [B 587, C 499, R 613, C 719.]
- [145.] NETTA RUFINA (PALL.).
Rufous-crested Duck. [B —, C —, R —, C 886.]
146. AYTHYA AMERICANA (EYT.).
Redhead. [B 591, C 503, R 618, C 723.]
147. AYTHYA VALLISNERIA (WILS.).
Canvas-back. [B 592, C 504, R 617, C 724.]
148. AYTHYA MARILA ~~NEARCTICA~~ STEJN. (Linn.).
American Scaup Duck. [B 588, C 500, R 614, C 720.]
149. AYTHYA AFFINIS (EYT.).
Lesser Scaup Duck. [B 589, C 501, R 615, C 721.]
150. AYTHYA COLLARIS (DONOV.).
Ring-necked Duck. [B 590, C 502, R 616, C 722.]
151. ~~GLAUCIONETTA CLANGULA AMERICANA~~ (DONOV.) *Jayson*
American Golden-eye. [B 593, C 505, R 620, C 725.]
152. ~~GLAUCIONETTA ISLANDICA~~ (GMEL.).
Barrow's Golden-eye. [B 594, C 506, R 619, C 726.]
153. CHARITONETTA ALBEOLA (LINN.).
Buffle-head. [B 595, C 507, R 621, C 727.]
154. CLANGULA HYEMALIS (LINN.).
Old-squaw. [B 597, C 508, R 623, C 728.]
155. HISTRIONICUS HISTRIONICUS (LINN.).
Harlequin Duck. [B 596, C 510, R 622, C 730.]

163. *O. a. Swains.*

167. *E. jamaicensis* (Gmel.)

156. **CAMPTOLAIMUS LABRADORIUS** (GMEL.).
Labrador Duck. [B 600, C 510, R 624, C 730.]
157. **ENICONETTA STELLERI** (PALL.).
Steller's Duck. [B 598, C 511, R 625, C 731.]
158. **ARCTONETTA FISCHERI** (BRANDT).
Spectacled Eider. [B 599, C 512, R 626, C 732.]
159. **SOMATERIA MOLLISSIMA BOREALIS** ^(C.L.) (BREHM).
Greenland Eider. [B 606 *part*, C 513 *part*, R 627, C 733.]
160. **SOMATERIA DRESSERI** SHARPE.
American Eider. [B 606 *part*, C 513 *part*, R 627a, C 734.]
161. **SOMATERIA V-NIGRA** GRAY.
Pacific Eider. [B 607, C 514, R 628, C 735.]
162. **SOMATERIA SPECTABILIS** (LINN.).
King Eider. [B 608, C 515, R 629, C 736.]
163. **OIDEMIA AMERICANA** Sw. & Rich.
American Scoter. [B 604, C 516, R 630, C 737.]
- [164.] **OIDEMIA FUSCA** (LINN.).
Velvet Scoter. [B —, C —, R 631, C —.]
165. **OIDEMIA DEGLANDI** BONAP.
White-winged Scoter. [B 601, C 517, R 632, C 738.]
166. **OIDEMIA PERSPICILLATA** (LINN.).
Surf Scoter. [B 602, 603, C 518, 518a, R 633, C 739, 740.]
167. **ERISMATURA RUBIDA** (WILLS.).
Ruddy Duck. [B 609, C 519, R 634, C 741.]
- [168.] **NOMONYX DOMINICUS** (LINN.).
Masked Duck. [B 610, C 520, R 635, C 742.]
169. **CHEN HYPERBOREA** (PALL.).
Lesser Snow Goose. [B —, C 48ca, R 591a, C 696.]
- 169a. **CHEN HYPERBOREA NIVALIS** (FORST.).
Greater Snow Goose. [B 563, C 480, R 591, C 695.]
- 169.1 **CHEN CÆRULESCENS** (LINN.).
Blue Goose. [B 564, C 479, R 590, C 694.]

[171.1.] *Anser fabalis* (Lath.)

173a. *B. l. glaucogastra* (Brehm.) White-bellied Annet

[17

173

170. **CHEN ROSSII** (BAIRD).
Ross's Snow Goose. [B —, C 481, R 592, C 697.]
- [171.] **ANSER ALBIFRONS** (GMEL.).
 [171.1.] **White-fronted Goose.** [B —, C —, R 593, C 692.]
- 171a. **ANSER ALBIFRONS GAMBELI** (HARTL.).
American White-fronted Goose. [B 565, 566, C 478,
 R 593a, C 693.]
172. **BRANTA CANADENSIS** (LINN.).
Canada Goose. [B 567, C 485, R 594, C 702.]
- 172a. **BRANTA CANADENSIS HUTCHINSII** (SW. & RICH.).
Hutchins's Goose. [B 569, C 485b, R 594a, C 704.]
- 172b. **BRANTA CANADENSIS OCCIDENTALIS** (BAIRD).
White-cheeked Goose. [B 567a, C —, R 594c, C —.]
- 172c. **BRANTA CANADENSIS MINIMA** RIDGW.
Cackling Goose. [B 568, C 485a, R 594b, C 703 *part.*]
173. **BRANTA BERNICLA** (LINN.).
 173 a. **Brant.** [B 570, C 484, R 595, C 700.]
174. **BRANTA NIGRICANS** (LAWR.).
Black Brant. [B 571, C —, R 596, C 701.]
- [175.] **BRANTA LEUCOPSIS** (BECHST.).
Barnacle Goose. [B 572, C 483, R 597, C 699.]
176. **PHILACTE CANAGICA** (SEVAST.).
Emperor Goose. [B 573, C 482, R 598, C 698.]
177. **DENDROCYGNA AUTUMNALIS** (LINN.).
Black-bellied Tree-duck. [B 574, C 487, R 599, C 706.]
178. **DENDROCYGNA FULVA** (GMEL.).
Fulvous Tree-duck. [B 575, C 486, R 600, C 705.]
- [179.] **OLOR CYGNUS** (LINN.).
Whooping Swan. [B —, C —, R 586, C 690.]
180. **OLOR COLUMBIANUS** (ORD).
Whistling Swan. [B 561 *bis*, C 477, R 588, C 689.]
181. **OLOR BUCCINATOR** (RICH.).
Trumpeter Swan. [B 562, C 476, R 589, C 688.]

191. see auk vol X. page 61.

191.1. *Ardetta neoveena*. Cory.

182. **PHŒNICOPTERUS RUBER** (LINN.).
American Flamingo. [B 502, C 475, R 585, C 687.]
183. **AJAJA AJAJA** (LINN.).
Roseate Spoonbill. [B 501, C 488, R 505, C 653.]
184. **GUARA ALBA** (LINN.).
White Ibis. [B 499, C 446, R 501, C 651.]
- [185.] **GUARA RUBRA** (LINN.).
Scarlet Ibis. [B 498, C 447, R 502, C 652.]
186. **PLEGADIS AUTUMNALIS** (HASSELQ.).
Glossy Ibis. [B 500, C 445, R 503, C 649.]
187. **PLEGADIS GUARAUNA** (LINN.).
White-faced Glossy Ibis. [B —, C 445 *bis*, 445 *ter*,
R 504, C 650.]
188. **TANTALUS LOCULATOR** LINN.
Wood Ibis. [B 497, C 444, R 500, C 648.]
- [189.] **MYCTERIA AMERICANA** LINN.
Jabiru. [B —, C 448 *bis*, R 499, C 654.]
190. **BOTAURUS LENTIGINOSUS** (MONTAG.).
American Bittern. [B 492, C 460, R 497, C 666.]
- Ardetta*
191. ~~**BOTAURUS**~~ **EXILIS** (GMEL.).
Least Bittern. [B 491, C 461, R 498, C 667.]
- 191.1 ~~**BOTAURUS**~~ **NEOXENUS** (CORY).
Cory's Least Bittern. [B —, C —, R —, C —.]
192. **ARDEA OCCIDENTALIS** AUD.
Great White Heron. [B 489, C 451, R 486, C 656 *part.*]
193. **ARDEA WARDI** RIDGW.
Ward's Heron. [B —, C —, R —, C —.]
194. **ARDEA HERODIAS** LINN.
Great Blue Heron. [B 487, C 449, R 487, C 655.]
- [195.] **ARDEA CINEREA** LINN.
European Blue Heron. [B —, C —, R 488, C 657.]
196. **ARDEA EGRETTEA** GMEL.
American Egret. [B 486, 486*, C 452, R 489, C 658.]

201 b. a. v. anthonyi Mearns

201

211 changed to *Rallus crepitans* (Gmel.)

197. **ARDEA CANDIDISSIMA** GMEL.
Snowy Heron. [B 485, C 453, R 490, C 659.]
198. **ARDEA RUFESCENS** GMEL.
Reddish Egret. [B 483, 482, C 455, R 491, C 661.]
199. **ARDEA TRICOLOR RUFICOLLIS** (GOSSE).
Louisiana Heron. [B 484, C 454, R 492, C 660.]
200. **ARDEA CÆRULEA** LINN.
Little Blue Heron. [B 490, C 456, R 493, C 662.]
201. **ARDEA VIRESCENS** LINN.
Green Heron. [B 493, C 457, R 494, C 663.]
- 201a. **ARDEA VIRESCENS FRAZARI** BREWST.
201 *h* Frazar's Green Heron. [B —, C —, R —, C —.]
202. **NYCTICORAX NYCTICORAX NÆVIUS** (BODD.).
Black-crowned Night Heron. [B 495, C 458, R 495, C 664.]
203. **NYCTICORAX VIOLACEUS** (LINN.).
Yellow-crowned Night Heron. [B 496, C 459, R 496, C 665.]
204. **GRUS AMERICANA** (LINN.).
Whooping Crane. [B 478, C 462, R 582, C 668.]
205. **GRUS CANADENSIS** (LINN.).
Little Brown Crane. [B 480, C 463, R 584, C 669.]
206. **GRUS MEXICANA** (MÜLL.).
Sandhill Crane. [B 479, C —, R 583, C 670.]
207. **ARAMUS GIGANTEUS** (BONAP.).
Limpkin. [B 481, C 464, R 581, C 671.]
208. **RALLUS ELEGANS** AUD.
King Rail. [B 552, C 466, R 569, C 676.]
209. **RALLUS BELDINGI** RIDGW.
Belding's Rail. [B —, C —, R —, C —.]
210. **RALLUS OBSOLETUS** RIDGW.
California Clapper Rail. [B —, C 466a, R 570, C 674.]
211. **RALLUS LONGIROSTRIS CREPITANS** (GMEL.).
Clapper Rail. [B 553, C 465, R 571, C 673.]

211-1 *See next page*

211a changed to *Rallus crepitans saturatus* (Hensh.)

211.1 " " *Rallus scottii* (Penn.)

216.1 *P. coturniculus* (Baird.)

216.1

- x 211a. **RALLUS LONGIROSTRIS SATURATUS** HENSH.
Louisiana Clapper Rail. [B —, C —, R 571a, C 675.]
- x ~~211b.~~ } **RALLUS LONGIROSTRIS SCOTTII** SENN.
211b. } Scott's Rail. [B —, C —, R —, C —.]
- 211c. **RALLUS LONGIROSTRIS CARIBÆUS** RIDGW.
Caribbean Clapper Rail. [B —, C —, R —, C —.]
212. **RALLUS VIRGINIANUS** LINN.
Virginia Rail. [B 554, C 467, R 572, C 677.]
- [213.] **PORZANA PORZANA** (LINN.).
Spotted Crake. [B —, C —, R 573, C 678.]
214. **PORZANA CAROLINA** (LINN.).
Sora. [B 555, C 648, R 574, C 679.]
215. **PORZANA NOVEBORACENSIS** (GMEL.).
Yellow Rail. [B 557, C 469, R 575, C 680.]
216. **PORZANA JAMAICENSIS** (GMEL.).
Black Rail. [B 556, C 470, R 576, C 681.]
- 216.1. ~~216a.~~ **PORZANA JAMAICENSIS COTURNICULUS** BARR.
Farallone Rail. [B —, C 470a, R 576a, C 682.]
- [217.] **CREX CREX** (LINN.).
Corn Crake. [B 558, C 471, R 577, C 683.]
218. **IONORNIS MARTINICA** (LINN.).
Purple Gallinule. [B 561, C 473, R 578, C 685.]
219. **GALLINULA GALEATA** (LICHT.).
Florida Gallinule. [B 560, C 472, R 579, C 685.]
- [220.] **FULICA ATRA** LINN.
European Coot. [B —, C —, R —, C 885.]
221. **FULICA AMERICANA** GMEL.
American Coot. [B 559, C 474, R 580, C 686.]
222. **CRYMOPHILUS FULICARIUS** (LINN.).
Red Phalarope. [B 521, C 411, R 563, C 604.]
223. **PHALAROPUS LOBATUS** (LINN.).
Northern Phalarope. [B 520, C 410, R 564, C 603.]

224. *Steganopus tricolor* Vieill.

[230.1.] *G. major* (Gmel.) Greater Fringe

[2

224. **PHALAROPUS TRICOLOR** (VIEILL.).
Wilson's Phalarope. [B 519, C 409, R 565, C 602.]
225. **RECURVIROSTRA AMERICANA** GMEL.
American Avocet. [B 517, C 407, R 566, C 600.]
226. **HIMANTOPUS MEXICANUS** (MÜLL.).
Black-necked Stilt. [B 518, C 408, R 567, C 601.]
- [227.] **SCOLOPAX RUSTICOLA** LINN.
European Woodcock. [B —, C 413, R 524, C 606.]
228. **PHILOHELA MINOR** (GMEL.).
American Woodcock. [B 522, C 412, R 525, C 605.]
- [229.] **GALLINAGO GALLINAGO** (LINN.).
European Snipe. [B —, C —, R 526, C 607.]
230. **GALLINAGO DELICATA** (ORD).
[2 30.1.] Wilson's Snipe. [B 523, C 414, R 526a, C 608.]
231. **MACRORHAMPHUS GRISEUS** (GMEL.).
Dowitcher. [B 524, C 415, R 527, C 609.]
232. **MACRORHAMPHUS SCOLOPACEUS** (SAY).
Long-billed Dowitcher. [B 525, C 415a, R 527a, C 610.]
233. **MICROPALAMA HIMANTOPUS** (BONAP.).
Stilt Sandpiper. [B 536, C 416, R 528, C 611.]
234. **TRINGA CANUTUS** LINN.
Knot. [B 526, C 426, R 529, C 626.]
235. **TRINGA MARITIMA** BRÜNN.
Purple Sandpiper. [B 528, C 423, R 530, C 620.]
236. **TRINGA COUESI** (RIDGW.).
Aleutian Sandpiper. [B —, C —, R 531, C 621.]
237. **TRINGA PTILOCNEMIS** COUES.
Prybilof Sandpiper. [B —, C 426 bis, R 532, C 622.]
238. **TRINGA ACUMINATA** (HORSF.).
Sharp-tailed Sandpiper. [B —, C —, R 533, C 619.]
239. **TRINGA MACULATA** VIEILL.
Pectoral Sandpiper. [B 531, C 420, R 534, C 616.]

1209
25-
1174

240. **TRINGA FUSCICOLLIS** VIEILL.
White-rumped Sandpiper. [B 533, C 421, R 536, C 617.]
241. **TRINGA BAIRDII** (COUES).
Baird's Sandpiper. [B —, C 419, R 537, C 615.]
242. **TRINGA MINUTILLA** VIEILL.
Least Sandpiper. [B 532, C 418, R 538, C 614.]
- 242.1 **TRINGA DAMACENSIS** (HORSF.).
Long-toed Stint. [B —, C —, R —, C —.]
- [243.] **TRINGA ALPINA** LINN.
Dunlin. [B —, C —, R 539, C 623.]
- 243a. **TRINGA ALPINA PACIFICA** (COUES).
Red-backed Sandpiper. [B 530, C 424, R 539a, C 624.]
244. **TRINGA FERRUGINEA** BRÜNN.
Curlew Sandpiper. [B 529, C 425, R 540, C 625.]
- [245.] **EURYNORHYNCHUS PYGMÆUS** (LINN.).
Spoon-bill Sandpiper. [B —, C —, R 542*, C 884.]
246. **EREUNETES PUSILLUS** (LINN.).
Semipalmated Sandpiper. [B 535, C 417, R 541, C 612.]
247. **EREUNETES OCCIDENTALIS** LAWR.
Western Sandpiper. [B —, C 417a, R 541a, C 613.]
248. **CALIDRIS ARENARIA** (LINN.).
Sanderling. [B 534, C 427, R 542, C 627.]
249. **LIMOSA FEDOA** (LINN.).
Marbled Godwit. [B 547, C 428, R 543, C 628.]
250. **LIMOSA LAPPONICA BAUERI** (NAUM.).
Pacific Godwit. [B —, C 430, R 544, C 631.]
251. **LIMOSA HEMASTICA** (LINN.).
Hudsonian Godwit. [B 548, C 429, R 545, C 629.]
- [252.] **LIMOSA LIMOSA** (LINN.).
Black-tailed Godwit. [B —, C —, R 546, C 630.]
- [253.] **TOTANUS NEBULARIUS** (GUNN.).
Green-shank. [B 538, C 434, R 547, C 635.]

256, 256a, [257] *Helodromas*

256a. *X. s. cinnamomeus*, (Brewster.)
Western Solitary Sandpiper.

254. **TOTANUS MELANOLEUCUS** (GMEL.).
Greater Yellow-legs. [B 539, C 432, R 548, C 633.]
255. **TOTANUS FLAVIPES** (GMEL.).
Yellow-legs. [B 540, C 433, R 549, C 634.]
256. ~~TOTANUS~~ **SOLITARIUS** (WILS.).
256a Solitary Sandpiper. [B 541, C 435, R 550, C 637.]
- [257.] ~~TOTANUS~~ **OCHROPUS** (LINN.).
Green Sandpiper. [B —, C —, R 551, C 636.]
258. **SYMPHEMIA SEMIPALMATA** (GMEL.).
Willet. [B 537 *part*, C 431 *part*, R 552 *part*, C 632 *part*.]
- 258*a*. **SYMPHEMIA SEMIPALMATA INORNATA** BREWST.
Western Willet. [B 537 *part*, C 431 *part*, R 552 *part*, C 632 *part*.]
259. **HETERACTITIS INCANUS** (GMEL.).
Wandering Tattler. [B 542, C 440, R 553, C 642.]
- [260.] **PAVONCELLA PUGNAX** (LINN.).
Ruff. [B 544, C 437, R 554, C 639.]
261. **BARTRAMIA LONGICAUDA** (BECHST.).
Bartramian Sandpiper. [B 545, C 438, R 555, C 640.]
262. **TRYNGITES SUBRUFICOLLIS** (VIEILL.).
Buff-breasted Sandpiper. [B 546, C 439, R 556, C 641.]
263. **ACTITIS MACULARIA** (LINN.).
Spotted Sandpiper. [B 543, C 436, R 557, C 638.]
264. **NUMENIUS LONGIROSTRIS** WILS.
Long-billed Curlew. [B 549, C 441, R 558, C 643.]
265. **NUMENIUS HUDSONICUS** LATH.
Hudsonian Curlew. [B 550, C 442, R 559, C 645.]
266. **NUMENIUS BOREALIS** (FORST.).
Eskimo Curlew. [B 551, C 443, R 560, C 646.]
- [267.] **NUMEMIUS PHÆOPUS** (LINN.).
Whimbrel. [B —, C —, R 561, C 644.]
- [268.] **NUMENIUS TAHITIENSIS** (GMEL.).
Bristle-thighed Curlew. [B —, C 442 *bis*, R 562, C 647.]

270. *Squatarola squatarola* (Linn.).

- [269.] **VANELLUS VANELLUS** (LINN.).
Lapwing. [B —, C —, R 512, C 593.]
270. ~~CHARADRIUS~~ **SQUATAROLA** (LINN.).
Black-bellied Plover. [B 510, C 395, R 513, C 580.]
- [271.] **CHARADRIUS APRICARIUS** LINN.
Golden Plover. [B —, C —, R 514, C 583.]
272. **CHARADRIUS DOMINICUS** MÜLL.
American Golden Plover. [B 503, C 396, R 515, C 581.]
- 272a. **CHARADRIUS DOMINICUS FULVUS** (GMEL.).
Pacific Golden Plover. [B —, C —, R 515a, C 582.]
273. **ÆGIALITIS VOCIFERA** (LINN.).
Killdeer. [B 504, C 397, R 516, C 584.]
274. **ÆGIALITIS SEMIPALMATA** BONAP.
Semipalmated Plover. [B 507, C 399, R 517, C 586.]
275. **ÆGIALITIS HIATICULA** (LINN.).
Ring Plover. [B —, C —, R 518, C 589.]
- [276.] **ÆGIALITIS DUBIA** (SCOP.).
Little Ring Plover. [B —, C 400 *bis*, R 519, C 590.]
277. **ÆGIALITIS MELODA** (ORD).
Piping Plover. [B 508, C 400, R 520, C 587.]
- 277a. **ÆGIALITIS MELODA CIRCUMCINCTA** RIDGW.
Belted Piping Plover. [B —, C 400a, R 520a, C 588.]
278. **ÆGIALITIS NIVOSA** CASS.
Snowy Plover. [B 509, C 401, R 521, C 591.]
- [279.] **ÆGIALITIS MONGOLA** (PALL.).
Mongolian Plover. [B —, C —, R —, C —.]
280. **ÆGIALITIS WILSONIA** (ORD).
Wilson's Plover. [B 506, C 398, R 522, C 585.]
281. **ÆGIALITIS MONTANA** (TOWNS.).
Mountain Plover. [B 505, C 402, R 523, C 592.]
282. **APHRIZA VIRGATA** (GMEL.).
Surf Bird. [B 511, C 403, R 511, C 594.]

292 B

Oreortyx pictus confinis (Anthony)
San Pedro Partridge.

283. **ARENARIA INTERPRES** (LINN.).
Turnstone. [B 515, C 406, R 509, C 598.]
284. **ARENARIA MELANOCEPHALA** (VIG.).
Black Turnstone. [B 516, C 406a, R 510, C 599.]
- [285.] **HÆMATOPUS OSTRALEGUS** LINN.
Oyster-catcher. [B —, C —, R 506, C 595.]
286. **HÆMATOPUS PALLIATUS** TEMM.
American Oyster-catcher. [B 512, C 404, R 507, C 596.]
- 286.1 **HÆMATOPUS FRAZARI** BREWST.
Frazar's Oyster-catcher. [B —, C —, R —, C —.]
287. **HÆMATOPUS BACHMANI** AUD.
Black Oyster-catcher. [B 513, C 405, R 508, C 597.]
- [288.] **JACANA SPINOSA** (LINN.).
Mexican Jacana. [B —, C —, R 568, C 672.]
289. **COLINUS VIRGINIANUS** (LINN.).
Bob-white. [B 471, C 389, R 480, C 571.]
- 289a. **COLINUS VIRGINIANUS FLORIDANUS** (COUES).
Florida Bob-white. [B —, C 389a, R 480a, C 572.]
- 289b. **COLINUS VIRGINIANUS TEXANUS** (LAWR.).
Texan Bob-white. [B 472, C 389b, R 480b, C 573.]
- 289c. **COLINUS VIRGINIANUS CUBANENSIS** (GOULD).
Cuban Bob-white. [B —, C —, R —, C —.]
291. **COLINUS RIDGWAYI** BREWST.
Masked Bob-white. [B —, C —, R —, C —.]
292. **OREORTYX PICTUS** (DOUGL.).
Mountain Partridge. [B 473, C 390, R 481, C 574.]
- 292a. **OREORTYX PICTUS PLUMIFERUS** (GOULD).
Plumed Partridge. [B —, C —, R 481a, C —.]
- 292 β
293. **CALLIPEPLA SQUAMATA** (VIG.).
Scaled Partridge. [B 476, C 393, R 484, C 577.]
- 293a. **CALLIPEPLA SQUAMATA CASTANOGASTRIS** BREWST.
Chestnut-bellied Scaled Partridge. [B —, C —, R —, C —.]

294. 294a. 295. *Rophortyx*

298-299. *Canachites*

294. ~~CALLIPEPLA CALIFORNICA~~^{uo} (SHAW).
California Partridge. [B 474, C 391, R 482, C 575.]
- 294a. ~~CALLIPEPLA CALIFORNICA~~^{uo} VALLICOLA (RIDGW.).
Valley Partridge. [B —, C —, R —, C —.]
295. ~~CALLIPEPLA GAMBELII~~^{Gamb.} (NEWTALLI).
Gambel's Partridge. [B 475, C 392, R 483, C 576.]
296. CYRTONYX MONTEZUMÆ (VIG.).
Massena Partridge. [B 477, C 394, R 485, C 578.]
297. DENDRAGAPUS OBSCURUS (SAY).
Dusky Grouse. [B 459, C 381, R 471, C 557.]
- 297a. DENDRAGAPUS OBSCURUS FULIGINOSUS RIDGW.
Sooty Grouse. [B —, C 381b, R 471a, C 559.]
- 297b. DENDRAGAPUS OBSCURUS RICHARDSONII (SAB.).
Richardson's Grouse. [B —, C 381a, R 471b, C 558.]
298. ~~DENDRAGAPUS CANADENSIS~~ (LINN.).
Canada Grouse. [B 460, C 380, R 472, C 555.]
299. ~~DENDRAGAPUS FRANKLINII~~ (DOUGL.).
Franklin's Grouse. [B 461, C 380a, R 472a, C 556.]
300. BONASA UMBELLUS (LINN.).
Ruffed Grouse. [B 465, C 385, R 473, C 565.]
- 300a. BONASA UMBELLUS TOGATA (LINN.).
Canadian Ruffed Grouse. [B —, C —, R —, C —.]
- 300b. BONASA UMBELLUS UMBELLOIDES (DOUGL.).
Gray Ruffed Grouse. [B 465*, C 385a, R 473a, C 566.]
- 300c. BONASA UMBELLUS SABINI (DOUGL.).
Oregon Ruffed Grouse. [B 466, C 385b, R 473b, C 567.]
301. LAGOPUS LAGOPUS (LINN.).
Willow Ptarmigan. [B 467, 470, C 386, R 474, C 568.]
- 301a. LAGOPUS LAGOPUS ALLENI STEJN.
Allen's Ptarmigan. [B —, C —, R —, C —.]
302. LAGOPUS RUPESTRIS (GMBL.).
Rock Ptarmigan. [B 468, C 387, R 475, C 569.]

302 d. *L. r. townsendi* Elliot.
302.1. *L. evermanni* Elliot.

305a. *J. a. attwateri* (Bendire)
attwateri Prairie Hen.

308 - 308 b *Pediocetes*

310. Mexican Turkey
310a. *M. g. fera* (Vieill.). Wild Turkey

310 b. *M. g. osceola*, Scott.
Florida Wild Turkey

310 c. *M. g. ~~allisti~~* Sennett. } *intermedia*
Rio Grande Turkey.

- 302a. **LAGOPUS RUPESTRIS REINHARDTI** (BREHM).
Reinhardt's Ptarmigan. [B —, C —, R —, C —.]
- 302b. **LAGOPUS RUPESTRIS NELSONI** STEJN.
Nelson's Ptarmigan. [B —, C —, R —, C —.]
- 302c. **LAGOPUS RUPESTRIS ATKHENSIS** (TURNER).
302d. Turner's Ptarmigan. [B —, C —, R —, C —.]
302e.
303. **LAGOPUS WELCHI** BREWST.
Welch's Ptarmigan. [B —, C —, R —, C —.]
304. **LAGOPUS LEUCURUS** SWAINS.
White-tailed Ptarmigan. [B 469, C 388, R 476, C 570.]
305. **TYMPANUCHUS AMERICANUS** (REICH.).
305a. Prairie Hen. [B 464, C 384, R 477, C 563.]
306. **TYMPANUCHUS CUPIDO** (LINN.).
Heath Hen. [B 464 part, C 384 part, R 477 part, C 563 part.]
307. **TYMPANUCHUS PALLIDICINCTUS** (RIDGW.).
Lesser Prairie Hen. [B —, C 384a, R 477a, C 564.]
308. **PEDIOCAETES PHASIANELLUS** (LINN.).
Sharp-tailed Grouse. [B —, C 383, R 478, C 561.]
- 308a. ~~PEDIOCAETES~~ **PHASIANELLUS COLUMBIANUS** (ORD).
Columbian Sharp-tailed Grouse. [B 463, C 383a,
R 478a, C 562.]
- 308b. ~~PEDIOCAETES~~ **PHASIANELLUS CAMPESTRIS** RIDGW.
Prairie Sharp-tailed Grouse. [B —, C —, R —, C —.]
309. **CENTROCERCUS UROPHASIANUS** (BONAP.).
Sage Grouse. [B 462, C 382, R 479, C 560.]
310. **MELEAGRIS GALLOPAVO** LINN.
~~Wild~~ Turkey. [B 457, C 379a, R 470a, C 551.]
- 310a. **MELEAGRIS GALLOPAVO MEXICANA** (COULB.)
310b. ~~Mexican~~ Turkey. [B 457, C 379a, R 470a, C 551.]
310c.
311. **ORTALIS VETULA MACCALLI** BAIRD.
Chachalaca. [B 456, C 378, R 469, C 552.]
312. **COLUMBA FASCIATA** SAY.
Band-tailed Pigeon. [B 445, C 367, R 456, C 539.]

320. see Auk x1. p. 48.

322. *G. chrysis* Bonap.

[322.1] *Geotrygon montana* (Linn.)
Ruddy Quail-dove

326 *C. uruba* (Vieill.)

- 312a. **COLUMBA FASCIATA VIOSCÆ** BREWST.
Viosca's Pigeon. [B —, C —, R —, C —.]
313. **COLUMBA FLAVIROSTRIS** WAGL.
Red-billed Pigeon. [B 446, C 368, R 457, C 540.]
314. **COLUMBA LEUCOCEPHALA** LINN.
White-crowned Pigeon. [B 447, C 369, R 458, C 541.]
315. **ECTOPISTES MIGRATORIUS** (LINN.).
Passenger Pigeon. [B 448, C 370, R 459, C 543.]
316. **ZENAIIDURA MACROURA** (LINN.).
Mourning Dove. [B 451, C 371, R 460, C 544.]
317. **ZENAIDA ZENAIDA** (BONAP.).
Zenaida Dove. [B 449, C 372, R 462, C 545.]
318. **ENGYPTILA ALBIFRONS** (BONAP.).
White-fronted Dove. [B —, C —, R 463, C 542.]
319. **MELOPELIA LEUCOPTERA** (LINN.).
White-winged Dove. [B 450, C 373, R 464, C 546.]
320. **COLUMBIGALLINA PASSERINA** ^{*terrestris* Chapm.} ~~(LINN.)~~
Ground Dove. [B 453 part, C 374 part, R 465 part, C 547 part.]
- 320a. **COLUMBIGALLINA PASSERINA PALLESCENS** (BAIRD).
Mexican Ground Dove. [B 453 part, C 374^a part, R 465 part, C 547^a part.]
321. **SCARDAFELLA INCA** (LESS.).
Inca Dove. [B 452, C 375, R 466, C 549.]
- [322.] **GEOTRYGON ~~MARTINICA~~** ~~(GARR.)~~.
[322.] Key West Quail-Dove. [B 454, C 376, R 467, C 550.]
- [323.] **STARNENAS CYANOCEPHALA** (LINN.).
Blue-headed Quail Dove. [B 455, C 377, R 468, C 551.]
324. **PSEUDOGRYPHUS CALIFORNIANUS** (SHAW).
California Vulture. [B 2, C 364, R 453, C 536.]
325. **CATHARTES AURA** (LINN.).
Turkey Vulture. [B 1, C 365, R 454, C 537.]
326. **CATHARISTA ~~ATRATA~~** ~~(BARTR.)~~.
Black Vulture. [B 3, C 366, R 455, C 538.]

337d see ante VIII - pp 88

337d

327. **ELANOIDES FORFICATUS** (LINN.).
Swallow-tailed Kite. [B 34, C 337, R 426, C 493.]
328. **ELANUS LEUCURUS** (VIEILL.).
White-tailed Kite. [B 35, C 336, R 427, C 492.]
329. **ICTINIA MISSISSIPPIENSIS** (WILS.).
Mississippi Kite. [B 36, C 335, R 428, C 491.]
330. **ROSTRHAMUS SOCIABILIS** (VIEILL.).
Everglade Kite. [B 37, C 334, R 429, C 490.]
331. **CIRCUS HUDSONIUS** (LINN.).
Marsh Hawk. [B 38, C 333, R 430, C 489.]
332. **ACCIPITER VELOX** (WILS.).
Sharp-shinned Hawk. [B 17, C 338, R 432, C 494.]
333. **ACCIPITER COOPERI** (BONAP.).
Cooper's Hawk. [B 15, 16, C 339, R 431, C 495.]
334. **ACCIPITER ATRICAPILLUS** (WILS.).
American Goshawk. [B 14, C 340, R 433, C 496.]
- 344a. **ACCIPITER ATRICAPILLUS STRIATULUS** RIDGW.
Western Goshawk. [B —, C —, R 433a, C 497.]
335. **PARABUTEO UNICINCTUS HARRISI** (AUD.).
Harris's Hawk. [B 46, C 348, R 434, C 512.]
- [336.] **BUTEO BUTEO** (LINN.).
European Buzzard. [B —, C —, R 435, C —.]
337. **BUTEO BOREALIS** (GMEL.).
Red-tailed Hawk. [B 23, C 351, R 436, C 516.]
- 337a. **BUTEO BOREALIS KRIDERII** HOOPES.
Kridler's Hawk. [B —, C 351c, R 436a, C 519.]
- 337b. **BUTEO BOREALIS CALURUS** (CASS.).
Western Red-tail. [B 20, 24, C 351a, R 436b, C 517.]
- 337c. **BUTEO BOREALIS LUCASANUS** RIDGW.
Saint Lucas Red-tail. [B —, C 351b, R 436c, C 518.]
- 337d 338. ^{Borealis}**BUTEO HARLANI** (AUD.).
Harlan's Hawk. [B 22, C 350, R 438, C 515.]

341. See Arch XI. p. 48.

344. See Arch VIII. pp 90.

344

339. **BUTEO LINEATUS** (GMEL.).
Red-shouldered Hawk. [B 25, C 352, R 439, C 520.]
- 339a. **BUTEO LINEATUS ALLENI** RIDGW.
Florida Red-shouldered Hawk. [B —, C —, R —, C —.]
- 339b. **BUTEO LINEATUS ELEGANS** (CASS.).
Red-bellied Hawk. [B 26, C 352a, R 439a, C 521.]
340. **BUTEO ABBREVIATUS** CABAN.
Zone-tailed Hawk. [B —, C 353, R 440, C 522.]
341. **BUTEO ALBICAUDATUS** ~~VIEILL.~~ ^{Sennetti Allen.}
Sennell's White-tailed Hawk. [B —, C —, R 441, C 513.]
342. **BUTEO SWAINSONI** BONAP.
Swainson's Hawk. [B 18, 19, 21, 28, C 354, R 442, C 523.]
343. **BUTEO LATISSIMUS** (WILS.).
Broad-winged Hawk. [B 27, C 355, R 443, C 524.]
- 344 ~~344~~ **BUTEO BRACHYURUS** VIEILL.
Short-tailed Hawk. [B —, C —, R —, C —.]
345. **URUBITINGA ANTHRACINA** (LICHT.).
Mexican Black Hawk. [B —, C —, R 444, C 528.]
346. **ASTURINA PLAGIATA** SCHLEGEL.
Mexican Goshawk. [B 33, C 358, R 445, C 527.]
- [347.] **ARCHIBUTEO LAGOPUS** (BRÜNN.).
Rough-legged Hawk. [B —, C —, R —, C —.]
- 347a. **ARCHIBUTEO LAGOPUS SANCTI-JOHANNIS** (GMEL.).
American Rough-legged Hawk. [B 30, 31, C 356,
R 447, C 525.]
348. **ARCHIBUTEO FERRUGINEUS** (LICHT.).
Ferruginous Rough-leg. [B 32, C 357, R 448, C 526.]
349. **AQUILA CHRYSÆTOS** (LINN.).
Golden Eagle. [B 39, C 361, R 449, C 532.]
- [350.] **THRASAËTUS HARPYIA** (LINN.).
Harpy Eagle. [B —, C —, R 450, C 631.]
- [351.] **HALLÆTUS ALBICILLA** (LINN.).
Gray Sea Eagle. [B 42, C —, R 452, C 533.]

352 a *H. l. alascanus* C. H. Townsend - Northern B. E.

360 a. *F. s. deserticolus*, Mearns.

Desert Sparrow Hawk

360 b. *F. s. peninsularis*, Mearns.

St Lucas Sparrow Hawk.

[361.] see Auk VIII pp 88

352. **HALIÆTUS LEUCOCEPHALUS** (LINN.).
 352a Bald Eagle. [B 41, 43, C 362, R 451, C 534.]
353. **FALCO ISLANDUS** BRÜNN.
 White Gyrfalcon. [B 11, C 341a, R 412, C 501.]
354. **FALCO RUSTICOLUS** LINN.
 Gray Gyrfalcon. [B 12, C —, R 412a, C 500.]
- 354a. **FALCO RUSTICOLUS GYRFALCO** (LINN.).
 Gyrfalcon. [B —, C 341, R 412b, C 498.]
- 354b. **FALCO RUSTICOLUS OBSOLETUS** (GMEL.).
 Black Gyrfalcon. [B —, C —, R 412c, C 499.]
355. **FALCO MEXICANUS** SCHLEG.
 Prairie Falcon. [B 10, C 342, R 413, C 502.]
356. **FALCO PEREGRINUS ANATUM** (BONAP.).
 Duck Hawk. [B 5, 6, C 343, R 414, C 503.]
- 356a. **FALCO PEREGRINUS PEALEI** RIDGW.
 Peale's Falcon. [B —, C 343a, R 414a, C 504.]
357. **FALCO COLUMBARIUS** LINN.
 Pigeon Hawk. [B 7, C 344, R 417, C 505.]
- 357a. **FALCO COLUMBARIUS SUCKLEYI** RIDGW.
 Black Merlin. [B —, C 344a, R 417a, C 506.]
358. **FALCO RICHARDSONII** RIDGW.
 Richardson's Merlin. [B —, C 345, R 418, C 507.]
- [358.1] **FALCO REGULUS** PALL.
 Merlin. [B —, C —, R —, C —.]
359. **FALCO FUSCO-COERULESCENS** VIEILL.
 Aplomado Falcon. [B 9, C 347, R 419, C 511.]
- 359.1 **FALCO TINNUNCULUS** LINN.
 Kestrel. [B —, C —, R 422, C —.]
360. **FALCO SPARVERIUS** LINN.
 360a. American Sparrow Hawk. [B 13, C 346, 346a,
 360b. *dominicensis* Gm. R 420, 420a, C 508, 509.]
- [361.] **FALCO SPARVERIOIDES** Vie.
 Cuban Sparrow Hawk. [B —, C —, R 421, C 510.]

369a. *S. o. caurinum* Merriam

36

36

36

36

36

36

36

36

36

369a

36

[36

36

36

36

36

36

362. **POLYBORUS CHERIWAY** (JACQ.).
Audubon's Caracara. [B 45, C 363, R 423, C 535.]
363. **POLYBORUS LUTOSUS** RIDGW.
Guadalupe Caracara. [B —, C —, R 424, C —.]
364. **PANDION HALIAËTUS CAROLINENSIS** (GMEL.).
American Osprey. [B 44, C 360, R 425, C 530.]
365. **STRIX PRATINCOLA** BONAP.
American Barn Owl. [B 47, C 316, R 394, C 461.]
366. **ASIO WILSONIANUS** (LESS.).
American Long-eared Owl. [B 51, C 320, R 395, C 472.]
367. **ASIO ACCIPITRINUS** (PALL.).
Short-eared Owl. [B 52, C 321, R 396, C 473.]
368. **SYRNIUM NEBULOSUM** (FORST.).
Barred Owl. [B 54, C 323, R 397, C 476.]
- 368a. **SYRNIUM NEBULOSUM ALLENI** RIDGW.
Florida Barred Owl. [B —, C —, R 397a, C 477.]
369. **SYRNIUM OCCIDENTALE** XANTUS.
369a Spotted Owl. [B —, C 324, R 398, C 478.]
370. **SCOTIAPTEX CINEREA** (GMEL.).
Great Gray Owl. [B 53, C 322, R 399, C 474.]
- [370a.] **SCOTIAPTEX CINEREA LAPPONICA** (RETZ.).
Lapp Owl. [B —, C —, R 399a, C 475.]
371. **NYCTALA TENGMALMI RICHARDSONI** (BONAP.).
Richardson's Owl. [B 55, C 327, R 400, C 482.]
372. **NYCTALA ACADICA** (GMEL.).
Saw-whet Owl. [B 56, 57, C 328, R 401, C 483.]
373. **MEGASCOPS ASIO** (LINN.).
Screech Owl. [B 49 *part*, C 318, R 402, C 465.]
- 373a. **MEGASCOPS ASIO FLORIDANUS** (RIDGW.).
Florida Screech Owl. [B —, C 318c, R 402a, C 469.]
- 373b. **MEGASCOPS ASIO MCCALLI** (CASS.).
Texan Screech Owl. [B 50, C 318b, R 402b, C 468.]

- 373 g. *M. a. aikeni* Brewst.
Aiken's Screech Owl.
- 373 h. *M. a. macfarlanei* Brewst.
MacFarlane's Screech Owl.
- 374 a. *M. f. idahoensis* Merriam
Dwarf Screech Owl.
- 373.1 *M. trichopsis* (Wagler).

375 d [?] *B. v. pacificus* Cassin.

~~375 e~~ *B. v.*

373.1

375

- 373c. **MEGASCOPS ASIO BENDIREI** (BREWST.).
California Screech Owl. [B —, C —, R —, C —.]
- 373d. **MEGASCOPS ASIO KENNICOTTII** (ELLIOT).
Kennicott's Screech Owl. [B —, C 318a, R 402d, C 466.]
- 373e. **MEGASCOPS ASIO MAXWELLIÆ** (RIDGW.).
Rocky Mountain Screech Owl. [B —, C —, R 402c, C 467.]
- 373f. **MEGASCOPS ASIO TRICHOPSIS** (WAGL.).
373^g Mexican Screech Owl. [B —, C —, R 403, C 470.]
373^h
- 373.1 374. **MEGASCOPS FLAMMEOLUS** (KAUF).
374a Flammulated Screech Owl. [B —, C 319, R 404, C 471.]
375. **BUBO VIRGINIANUS** (GMEL.).
Great Horned Owl. [B 48, C 317, R 405, C 462.]
- 375a. **BUBO VIRGINIANUS SUBARCTICUS** (HOY).
Western Horned Owl. [B 48 part, C 317a part,
R 405a part, C 463 part.]
- 375b. **BUBO VIRGINIANUS ARCTICUS** (SWAINS.).
Arctic Horned Owl. [B 48 part, C 317a part,
R 405b, C 463 part.]
- 375c. **BUBO VIRGINIANUS SATURATUS** RIDGW.
375d Dusky Horned Owl. [B 48 part, C 317b, R 405c, C 464.]
375e
376. **NYCTEA NYCTEA** (LINN.).
Snowy Owl. [B 61, C 325, R 406, C 479.]
- [377.] **SURNIA ULULA** (LINN.).
Hawk Owl. [B —, C —, R 407a, C 481.]
- 377a. **SURNIA ULULA CAPAROCH** (MÜLL.).
American Hawk Owl. [B 62, C 326, R 407, C 480.]
378. **SPEOTYTO CUNICULARIA HYPOGÆA** (BONAP.).
Burrowing Owl. [B 58, 59, C 332, R 408, C 487.]
- 378a. **SPEOTYTO CUNICULARIA FLORIDANA** RIDGW.
Florida Burrowing Owl. [B —, C —, R 408a, C 488.]
379. **GLAUCIDIUM GNOMA** WAGL.
Pygmy Owl. [B 60 part, C 329 part, R 409 part, C 484 part.]
- 379a. **GLAUCIDIUM GNOMA CALIFORNICUM** (SCL.).
California Pygmy Owl. [B 60 part, C 329 part,
R 409 part, C 484 part.]

391. *C. americana septentrionalis*, Sharpe.

- 379.1 **GLAUCIDIUM HOSKINSII** BREWST.
Hoskin's Pygmy Owl. [B —, C —, R —, C —.]
380. **GLAUCIDIUM PHALÆNOIDES** (DAUD.).
Ferruginous Pygmy Owl. [B —, C 330, R 410, C 485.]
381. **MICROPALLAS WHITNEYI** (COOPER).
Elf Owl. [B —, C 331, R 411, C 486.]
382. **CONURUS CAROLINENSIS** (LINN.).
Carolina Paroquet. [B 39, C 315, R 392, C 460.]
- [383.] **CROTOPHAGA ANI** LINN.
Ani. [B 66, 67, C 288, R 389, C 425.]
384. **CROTOPHAGA SULCIROSTRIS** SWAINS.
Groove-billed Ani. [B —, C —, R 390, C 426.]
385. **GEOCOCCYX CALIFORNIANUS** (LESS.).
Road-runner. [B 68, C 289, R 385, C 427.]
386. **COCYZUS MINOR** (GMEL.).
Mangrove Cuckoo. [B 71 *part*, C 292 *part*,
R 386 *part*, C 429 *part*.]
- 386a. **COCYZUS MINOR MAYNARDI** RIDGW.
Maynard's Cuckoo. [B 71 *part*, C 292 *part*,
R 386 *part*, C 429 *part*.]
387. **COCYZUS AMERICANUS** (LINN.).
Yellow-billed Cuckoo. [B 69, C 291, R 387, C 429.]
- 387a. **COCYZUS AMERICANUS OCCIDENTALIS** RIDGW.
California Cuckoo. [B —, C —, R 387 *part*, C 429 *part*.]
388. **COCYZUS ERYTHROPHthalmus** (WILS.).
Black-billed Cuckoo. [B 70, C 290, R 388, C 428.]
- [389.] **TROGON AMBIGUUS** GOULD.
Coppery-tailed Trogon. [B 65, C 284, R 384, C 422.]
390. **CERYLE ALCYON** (LINN.).
Belted Kingfisher. [B 117, C 286, R 382, C 423.]
391. ~~**CERYLE CABANISI** (Tschudi)~~
Texan Kingfisher. [B 118, C 287, R 383, C 424.]
392. **CAMPEPHILUS PRINCIPALIS** (LINN.).
Ivory-billed Woodpecker. [B 72, C 293, R 359, C 431.]

393 e D. v. monticola Anthony

394 B. Dryobates pubescens ~~pubescens~~ ^{homorus (Cab.)} (Batch)
Batchelders Woodpecker

394 C. D. p. medianus (Swainson)
Downy Woodpecker

394 d. D. p. nelsoni Oberholser

39

394 c

394 d

393. **DRYOBATES VILLOSUS** (LINN.).
Hairy Woodpecker. [B 74 part, C 298 part, R 360, C 438 part.]
- 393a. **DRYOBATES VILLOSUS LEUCOMELAS** (BODD.).
Northern Hairy Woodpecker. [B 74 part, C 298 part,
R 360a, C 438 part.]
- 393b. **DRYOBATES VILLOSUS AUDUBONII** (SWAINS.).
Southern Hairy Woodpecker. [B 74 part, C 298 part,
R 360 part, C 438 part.]
- 393c. **DRYOBATES VILLOSUS HARRISII** (AUD.).
Harris's Woodpecker. [B 75 part, C 298a part,
R 360b part, C 439 part.]
- 393d. **DRYOBATES VILLOSUS HYLOSCOPUS** (CAB.).
393 e Cabanis's Woodpecker. [B 75 part, C 298a part,
R 360b part, C 439 part.]
394. **DRYOBATES PUBESCENS** (LINN.).
Downy Woodpecker. [B 76, C 299, R 361, C 440.]
- 394a. **DRYOBATES PUBESCENS GAIRDNERII** (AUD.).
394 B Gairdner's Woodpecker. [B 77, C 299a, R 361a, C 441.]
- 394 c
594 d 395. **DRYOBATES BOREALIS** (VIEILL.).
Red-cockaded Woodpecker. [B 80, C 296, R 362, C 433.]
396. **DRYOBATES SCALARIS BAIRDI** (SCI.).
Baird's Woodpecker. [B 79, C 297, R 363, C 434.]
- 396a. **DRYOBATES SCALARIS LUCASANUS** (XANTUS).
Saint Lucas Woodpecker. [B —, C 297b, R 363a, C 436.]
397. **DRYOBATES NUTTALLII** (GAMB.).
Nuttall's Woodpecker. [B 78, C 297a, R 364, C 435.]
398. **DRYOBATES ARIZONÆ** (HARGITT).
Arizona Woodpecker. [B —, C —, R 365, C 437.]
399. **XENOPICUS ALBOLARVATUS** (CASS.).
White-headed Woodpecker. [B 81, C 295, R 366, C 442.]
400. **PICOIDES ARCTICUS** (SWAINS.).
Arctic Three-toed Woodpecker. [B 82, C 300, R 367, C 443.]
401. **PICOIDES AMERICANUS** BREHM.
American Three-toed Woodpecker. [B 83, C 301,
R 368, C 444.]
- 401a. **PICOIDES AMERICANUS ALASCENSIS** (NELS.).
Alaskan Three-toed Woodpecker. [B —, C —, R —, C —.]

405a *C. p. abieticola* Bangs. Northern P.W.

407. *M. formicivorus* (Swain.)

412a. *C. a. luteus* Bangs Northern Ficker

412-

- 401*b*. **PICOIDES AMERICANUS DORSALIS** BAIRD.
Alpine Three-toed Woodpecker. [B 84, C 301*a*,
R 368*a*, C 445.]
402. **SPHYRAPICUS VARIUS** (LINN.).
Yellow-bellied Sapsucker. [B 85, C 302, R 369, C 446.]
- 402*a*. **SPHYRAPICUS VARIUS NUCHALIS** BAIRD.
Red-naped Sapsucker. [B 86, C 302*a*, R 369*a*, C 447.]
403. **SPHYRAPICUS RUBER** (GMEL.).
Red-breasted Sapsucker. [B 87, C 302*b*, 303? R 369*b*, C 448.]
404. **SPHYRAPICUS THYROIDEUS** (CASS.).
Williamson's Sapsucker. [B 88, 89, C 304, 305, R 370, C 449.]
405. **CEOPHLEUS PILEATUS** (LINN.).
405*a*. Pileated Woodpecker. [B 90, C 294, R 371, C 432.]
406. **MELANERPES ERYTHROCEPHALUS** (LINN.).
407. Red-headed Woodpecker. [B 94, C 309, R 375, C 453.]
- 407*a*. **MELANERPES FORMICIVORUS BAIRDI** RIDGW.
Californian Woodpecker. [B 95, C 310, R 377, C 454.]
- 407*b*. **MELANERPES FORMICIVORUS ANGUSTIFRONS** BAIRD
Narrow-fronted Woodpecker. [B —, C 310*a*, R 377*a*, C 455.]
408. **MELANERPES TORQUATUS** (WILS.).
Lewis's Woodpecker. [B 96, C 311, R 376, C 456.]
409. **MELANERPES CAROLINUS** (LINN.).
Red-bellied Woodpecker. [B 91, C 306, R 372, C 450.]
410. **MELANERPES AURIFRONS** (WAGL.).
Golden-fronted Woodpecker. [B 92, C 307, R 373, C 451.]
411. **MELANERPES UROPYGIALIS** (BAIRD).
Gila Woodpecker. [B 93, C 308, R 374, C 452.]
412. **COLAPTES AURATUS** (LINN.).
412*a*. Flicker. [B 97, C 312, R 378, C 457.]
413. **COLAPTES CAFER** (GMEL.).
Red-shafted Flicker. [B 98, C 314, R 378*b*, C 459.]
- 413*a*. **COLAPTES CAFER SATURATIONIOR** RIDGW.
Northwestern Flicker. [B —, C —, R —, C —.]

414 a. *C. c. brunnescens* Anthony.

417 a. see Auk x1. p 48.

420 c. *C. v. sennetti* (Cores).

422. *Cypseloides niger borealis* (Kennerly)

414. **COLAPTES CHRYSOIDES** (MALH.).
414a Gilded Flicker. [B 99, C 313, R 379, C 458.]
415. **COLAPTES RUFPILEUS** RIDGW.
 Guadalupe Flicker. [B —, C —, R 380, C —.]
416. **ANTROSTOMUS CAROLINENSIS** (GMEL.).
 Chuck-will's-widow. [B 111, C 264, R 353, C 396.]
417. **ANTROSTOMUS VOCIFERUS** (WILS.).
 Whip-poor-will. [B 112, C 265, R 354, C 397.]
- 417*a*. **ANTROSTOMUS VOCIFERUS** ~~ARIZONAE~~ ^{*macromyctax (Wagler)*} BREWST.
 Stephens' Whip-poor-will. [B —, C —, R —, C 881.]
418. **PHALÆNOPTILUS NUTTALLI** (AUD.).
 Poor-will. [B 113 *part*, C 266 *part*, R 355 *part*, C 398 *part*.]
- 418*a*. **PHALÆNOPTILUS NUTTALLI NITIDUS** BREWST.
 Frosted Poor-will. [B 113 *part*, C 266 *part*,
 R 355 *part*, C 398 *part*.]
- 418*b*. **PHALÆNOPTILUS NUTTALLI CALIFORNICUS** RIDGW.
 California Poor-will. [B 113 *part*, C 266 *part*,
 R 355 *part*, C 398 *part*.]
419. **NYCTIDROMUS ALBICOLLIS MERRILLI** SENNETT.
 Parauque. [B —, C —, R 356, C 395.]
420. **CHORDEILES VIRGINIANUS** (GMEL.).
 Nighthawk. [B 114, C 267, R 357, C 399.]
- 420*a*. **CHORDEILES VIRGINIANUS HENRYI** (CASS.).
 Western Nighthawk. [B 115, C 267*a*, R 357*a*, C 400.]
- 420*c*. **CHORDEILES VIRGINIANUS CHAPMANI** (SENNETT).
 Florida Nighthawk. [B —, C —, R 357*b*, C 401.]
421. **CHORDEILES TEXENSIS** LAWR.
 Texan Nighthawk. [B 116, C 268, R 358, C 402.]
422. **CYPSELOIDES** ~~NIGER~~ (GMEL.).
 Black Swift. [B 108, C 270, R 350, C 404.]
423. **CHÆTURA PELAGICA** (LINN.).
 Chimney Swift. [B 109, C 271, R 351, C 405.]
424. **CHÆTURA VAUXII** (TOWNS.).
 Vaux's Swift. [B 110, C 272, R 352, C 406.]

435. *Atthis morcomi* Ridgw.
X 435 Eliminated. Auk VIII. pp 88.

43-

X

Aëronantes

425. **MICROPUS MELANOLEUCUS** (BAIRD).
White-throated Swift. [B 107, C 269, R 349, C 403.]
426. **EUGENES FULGENS** (SWAINS.).
Rivoli Hummingbird. [B —, C 274 *bis*, R 334, C 408.]
427. **CÆLIGENA CLEMENCIÆ** LESS.
Blue-throated Hummingbird. [B —, C —, R —, C —.]
428. **TROCHILUS COLUBRIS** LINN.
Ruby-throated Hummingbird. [B 101, C 275, R 335, C 409.]
429. **TROCHILUS ALEXANDRI** BOURC. & MULS.
Black-chinned Hummingbird. [B 102, C 276, R 336, C 410.]
- 429.1 **TROCHILUS VIOLAJUGULUM** JEFFRIES.
Violet-throated Hummingbird. [B —, C —, R —, C —.]
- Calypte*
430. ~~TROCHILUS~~ **COSTÆ** (BOURC.).
Costa's Hummingbird. [B 106, C 280, R 337, C 415.]
- Calypte*
431. ~~TROCHILUS~~ **ANNA** (LESS.).
Anna's Hummingbird. [B 105, C 279, R 338, C 415.]
- Selasphorus*
431.1 ~~TROCHILUS~~ **FLORESII** (GOULD).
Floresi's Hummingbird. [B —, C —, R —, C —.]
- Selasphorus*
432. ~~TROCHILUS~~ **PLATYCERCUS** (SWAINS.).
Broad-tailed Hummingbird. [B 104, C 278, R 339, C 413.]
- Selasphorus*
433. ~~TROCHILUS~~ **RUFUS** (GMEL.).
Rufous Hummingbird. [B 103, C 277, R 340, C 411.]
- Selasphorus*
434. ~~TROCHILUS~~ **ALLENI** (HENSLEY).
Allen's Hummingbird. [B —, C —, R 341, C 412.]
- 435 —
x — 435. ~~TROCHILUS~~ **HELOISA** (LESS. & DELATT.).
Heloise's Hummingbird. [B —, C 281, R 342, C 416.]
- Stellula*
436. ~~TROCHILUS~~ **CALLIOPE** (GOULD).
Calliope Hummingbird. [B —, C 282, R 343, C 417.]
- Calothorax*
437. ~~TROCHILUS~~ **LUCIFER** (SWAINS.).
Lucifer Hummingbird. [B —, C —, R 344, C 418.]
438. **AMAZILIA FUSCICAUDATA** (FRASER).
Reiffer's Hummingbird. [B —, C —, R 345, C 419.]

439. *A. c. chalconota* Oberh.

441-1 *Platypsaris albiventris* (Lowe)
Xantus's Becard.

439. **AMAZILIA CERVINIVENTRIS** ~~GOULD.~~
Buff-bellied Hummingbird. [B —, C —, R 346, C 420.]
440. **BASILINNA XANTUSI** (LAWR.).
Xantus's Hummingbird. [B —, C 273, R 347, C 407.]
441. **IACHE LATIROSTRIS** (SWAINS.).
Broad-billed Hummingbird. [B —, C —, R 348, C 421.]
- 442.] **MILVULUS TYRANNUS** (LINN.).
Fork-tailed Flycatcher. [B 122, C 240, R 302, C 366.]
443. **MILVULUS FORFICATUS** (GMEL.).
Scissor-tailed Flycatcher. [B 123, C 241, R 301, C 367.]
444. **TYRANNUS TYRANNUS** (LINN.).
Kingbird. [B 124, C 242, R 304, C 368.]
445. **TYRANNUS DOMINICENSIS** (GMEL.).
Gray Kingbird. [B 125, C 243, R 303, C 369.]
446. **TYRANNUS MELANCHOLICUS COUCHII** (BAIRD).
Couch's Kingbird. [B 128, 129, C 246, R 305, C 372.]
447. **TYRANNUS VERTICALIS** SAY.
Arkansas Kingbird. [B 126, C 244, R 306, C 370.]
448. **TYRANNUS VOCIFERANS** SWAINS.
Cassin's Kingbird. [B 127, C 245, R 307, C 371.]
449. **PITANGUS DERBIANUS** (KAUP).
Derby Flycatcher. [B —, C —, R 308, C 364.]
- [450.] **MYIOZETETES TEXENSIS** (GIRAUD).
Giraud's Flycatcher. [B —, C —, R 309, C —.]
451. **MYIODYNASTES LUTEIVENTRIS** SCL.
Sulphur-bellied Flycatcher. [B —, C —, R 310, C 365.]
452. **MYIARCHUS CRINITUS** (LINN.).
Crested Flycatcher. [B 130, C 247, R 312, C 373.]
453. **MYIARCHUS MEXICANUS** (KAUP).
Mexican Crested Flycatcher. [B 132, C —, R 311, C 374.]
- 453a. **MYIARCHUS MEXICANUS MAGISTER** RIDGW.
Arizona Crested Flycatcher. [B —, C —, R —, C —.]

454 a. *M. c. nuttingi* (Ridgw.)
Nutting's Flycatcher.

460. *C. p. pallidiventris* Chapman

462 a. *C. v. peninsulae* Brewst.
Large-billed Wood Pewee

465. *E. virescens* (Vieill.)
Green-crested Flycatcher

* 466. *E. traillii* (Aud.)
Traill's Flycatcher.

466 a. *E. p. alnorum* Brewst.
Alder Flycatcher

454. **MYIARCHUS CINERASCENS** LAWR.
 454a. Ash-throated Flycatcher. [B 131, C 248, R 313, C 375.]
- [455.] **MYIARCHUS LAWRENCEI** (GIRAUD).
 Lawrence's Flycatcher. [B 133, C 248, R 314, C 376.]
- 455a. **MYIARCHUS LAWRENCEI OLIVASCENS** RIDGW.
 Olivaceous Flycatcher. [B —, C —, R —, C —.]
456. **SAYORNIS PHOEBE** (LATH.).
 Phoebe. [B 135, C 252, R 315, C 379.]
457. **SAYORNIS SAYA** (BONAP.).
 Say's Phoebe. [B 136, C 250, R 316, C 377.]
458. **SAYORNIS NIGRICANS** (SWAINS.).
 Black Phoebe. [B 134, C 251, R 317, C 378.]
459. **CONTOPUS BOREALIS** (SWAINS.).
 Olive-sided Flycatcher. [B 137, C 253, R 318, C 380.]
460. **CONTOPUS PERTINAX** ~~CAB.~~
 Cones's Flycatcher. [B —, C 254, R 319, C 381.]
461. **CONTOPUS VIRENS** (LINN.).
 Wood Pewee. [B 139, C 255, R 320, C 382.]
462. **CONTOPUS RICHARDSONII** (SWAINS.).
 462a Western Wood Pewee. [B 138, C 255a, R 321, C 383.]
463. **EMPIDONAX FLAVIVENTRIS** BAIRD.
 Yellow-bellied Flycatcher. [B 144, C 259, R 322, C 388.]
464. **EMPIDONAX DIFFICILIS** BAIRD.
 Western Flycatcher. [B 144a, C 259 part, R 323, C 389.]
- 464.1 **EMPIDONAX CINERITIVS** BREWST.
 St. Lucas Flycatcher. [B —, C —, R —, C —.]
465. **EMPIDONAX ACADICUS** ~~(GIBB.)~~
 Acadian Flycatcher. [B 143, C 256, R 324, C 384.]
466. **EMPIDONAX PUSILLUS** (SWAINS.).
 Little Flycatcher. [B 141, C 257a, R 325, C 386.]
- 466a. **EMPIDONAX PUSILLUS TRAILLI** (AUD.).
 Traill's Flycatcher. [B 140, C 257, R 325a, C 385.]

469 changed to *Empidonax wrightii* (Bird)

469.1 *Empidonax griseus* (Brewer)
Gray Flycatcher.

467. **EMPIDONAX MINIMUS** BAIRD.
Least Flycatcher. [B 142, C 258, R 326, C 387.]
468. **EMPIDONAX HAMMONDI** (XANTUS).
Hammond's Flycatcher. [B 145, C 260, R 327, C 390.]
- x 469. **EMPIDONAX ~~OBSCURUS~~** (SWAINS.).
^{469.1} Wright's Flycatcher. [B 146, C 261, R 328, C 391.]
- [470.] **EMPIDONAX FULVIFRONS** (GIRAUD).
Fulvous Flycatcher. [B —, C —, R 329, C —.]
- 470a. **EMPIDONAX FULVIFRONS PYGMÆUS** (COUES).
Buff-breasted Flycatcher. [B —, C 262, R 329a, C 392.]
471. **PYROCEPHALUS RUBINEUS MEXICANUS** (SCI.).
Vermillion Flycatcher. [B 147, C 263, R 330, C 394.]
472. **ORNITHION IMBERBE** (SCI.).
Beardless Flycatcher. [B —, C —, R 331, C 393.]
- 472a. **ORNITHION IMBERBE RIDGWAYI** BREWST.
Ridgway's Flycatcher. [B —, C —, R —, C —.]
- [473.] **ALAUDA ARVENSIS** LINN.
Skylark. [B —, C 55 *bis*, R 299, C 88.]
474. **OTOCORIS ALPESTRIS** (LINN.).
Horned Lark. [B 302, C 53, R 300, C 82.]
- 474a. **OTOCORIS ALPESTRIS LEUCOLÆMA** (COUES).
Pallid Horned Lark. [B —, C 53*b*, R 300a, C 83.]
- 474b. **OTOCORIS ALPESTRIS PRATICOLA** HENSH.
Prairie Horned Lark. [B —, C —, R —, C —.]
- 474c. **OTOCORIS ALPESTRIS ARENICOLA** HENSH.
Desert Horned Lark. [B —, C —, R —, C —.]
- 474d. **OTOCORIS ALPESTRIS GIRAUDI** HENSH.
Texan Horned Lark. [B —, C —, R —, C —.]
- 474e. **OTOCORIS ALPESTRIS CHRYSOLÆMA** (WAGL.).
Mexican Horned Lark. [B —, C 53a, R 300*b*, C 84.]
- 474f. **OTOCORIS ALPESTRIS RUBEA** HENSH.
Ruddy Horned Lark. [B —, C —, R —, C —.]

474 h. *O. a. adusta*. Dwight.
Scorched horned lark.

474 i. *O. a. merrilla*. Dwight.
Dusky Horned lark.

474 j. *O. a. pallida*. ~~Ferris~~ Dwight.
Sonoran Horned Lark.

474
474
474

479 *a. cyanea* (Vieill.)

481 B *Aphelocoma californica obscura* (Anthony)
Belding's Jay.

- 474g. **OTOCORIS ALPESTRIS STRIGATA** HENSH.
 Streaked Horned Lark. [B —, C —, R —, C —.]
475. **PICA PICA HUDSONICA** (SAB.).
 American Magpie. [B 432, C 233, R 286, C 347.]
476. **PICA NUTTALLI** AUD.
 Yellow-billed Magpie. [B 433, C 233a, R 287, C 348.]
477. **CYANOCITTA CRISTATA** (LINN.).
 Blue Jay. [B 434, C 234, R 289, C 349.]
- 477a. **CYANOCITTA CRISTATA FLORINCOLA** COUES.
 Florida Blue Jay. [B —, C —, R —, C —.]
478. **CYANOCITTA STELLERI** (GMBL.).
 Steller's Jay. [B 435, C 235, R 290, C 350.]
- 478a. **CYANOCITTA STELLERI FRONTALIS** RIDGW.
 Blue-fronted Jay. [B —, C 235b, R 290a, C 353.]
- 478b. **CYANOCITTA STELLERI MACROLOPHA** (BAIRD).
 Long-crested Jay. [B 436 part, C 235a part, R 290c, C 352 part.]
- 478c. **CYANOCITTA STELLERI ANNECTENS** (BAIRD).
 Black-headed Jay. [B 436 part, C 235a part, R 290b, C 352 part.]
479. **APHELOCOMA FLORIDANA** (BARTR.)
 Florida Jay. [B 439, C 236, R 291, C 354.]
480. **APHELOCOMA WOODHOUSEI** (BAIRD).
 Woodhouse's Jay. [B 438, C 236a, R 292, C 355.]
481. **APHELOCOMA CALIFORNICA** (VIG.).
 California Jay. [B 437 part, C 236b part,
 R 293 part, C 356 part.]
- 481a. **APHELOCOMA CALIFORNICA HYPOLEUCA** RIDGW.
 Xantus's Jay. [B 437 part, C 236b part, R 293 part, C 356 part.]
- 481.1 **APHELOCOMA INSULARIS** HENSH.
 Santa Cruz Island Jay. [B —, C —, R —, C —.]
482. **APHELOCOMA SIEBERII ARIZONÆ** RIDGW.
 Arizona Jay. [B 440, C 237, R 295, C 357.]
483. **XANTHOURA LUXUOSA** (LESS.).
 Green Jay. [B 442, C 238, R 296, C 358.]

488a. *C. a. pasurus* Coues.

484. **PERISOREUS CANADENSIS** (LINN.).
Canada Jay. [B 443, C 239, R 297, C 359.]
- 484a. **PERISOREUS CANADENSIS CAPITALIS** BAIRD.
Rocky Mountain Jay. [B —, C 239b, R 297a, C 362.]
- 484b. **PERISOREUS CANADENSIS FUMIFRONS** RIDGW.
Alaskan Jay. [B —, C —, R 297b, C 360.]
- 484c. **PERISOREUS CANADENSIS NIGRICAPILLUS** RIDGW.
Labrador Jay. [B —, C —, R —, C —.]
485. **PERISOREUS OBSCURUS** (RIDGW.).
Oregon Jay. [B —, C 239a, R 298, C 361.]
486. **CORVUS CORAX SINUATUS** (WAGL.).
American Raven. [B 423, 424, C 226, R 280, C 338.]
- 486a. **CORVUS CORAX PRINCIPALIS** RIDGW.
Northern Raven. [B 423 *part*, C 226 *part*, R 280 *part*, C 338 *part*.]
487. **CORVUS CRYPTOLEUCUS** COUCH.
White-necked Raven. [B 425, C 227, R 281, C 339.]
488. **CORVUS AMERICANUS** AUD.
American Crow. [B 426, C 228, R 282, C 340.]
- 488a. **CORVUS AMERICANUS FLORIDANUS** BAIRD.
Florida Crow. [B 427, C 228a, R 282a, C 341.]
489. **CORVUS CAURINUS** BAIRD.
Northwest Crow. [B 428, C 228b, R 282b, C 342.]
490. **CORVUS OSSIFRAGUS** WILS.
Fish Crow. [B 429, C 229, R 283, C 343.]
491. **PICICORVUS COLUMBIANUS** (WILS.).
Clarke's Nutcracker. [B 430, C 230, R 284, C 344.]
492. **CYANOCEPHALUS CYANOCEPHALUS** (WIRD).
Piñon Jay. [B 431, C 231, R 285, C 345.]
- [493.] **STURNUS VULGARIS** LINN.
Starling. [B —, C —, R 279, C 363.]
494. **DOLICHONYX ORYZIVORUS** (LINN.).
Bobolink. [B 399, C 210, R 257, C 312.]

494a. synonym of *Dalichonyx oryzivorus* (Linn.). #494.

494a. *A. p. longirostris* (Salvad.)

498c. *A. p. floridanus* Maynard.

499. *A. g. californicus* Nelson.

501a *S. m. hoopesi* Stone

- # 494.
- 494a. ~~DOLICHONYX ORYZIVORUS ALBINUCHA~~ RIDGW.
~~Western Bobolink. [B —, C —, R —, C —.]~~
495. **MOLOTHRUS ATER** (BODD.).
 Cowbird. [B 400, C 211, R 258, C 313.]
- 495a. **MOLOTHRUS ATER OBSCURUS** (GMEL.).
 Dwarf Cowbird. [B —, C 211a, R 258a, C 314.]
496. **CALLOTHRUS ROBUSTUS** CAB.
 Bronzed Cowbird. [B —, C —, R 259, C 315.]
497. **XANTHOCEPHALUS XANTHOCEPHALUS** (BONAP.).
 Yellow-headed Blackbird. [B 404, C 213, R 260, C 319.]
498. **AGELAIUS PHENICEUS** (LINN.).
 Red-winged Blackbird. [B 401 part, C 212 part,
 R 261 part, C 316 part.]
- 498a. **AGELAIUS PHENICEUS SONORHENSIS** RIDGW.
 Sonoran Red-wing. [B 401 part, C 212 part,
 R 261 part, C 316 part.]
- 498b. **AGELAIUS PHENICEUS BRYANTI** RIDGW.
 Bahaman Red-winged. [B 401 part, C 212 part,
 R 261 part, C 316 part.]
499. **AGELAIUS GUBERNATOR** (WAGL.).
 Bicolored Blackbird. [B 402, C 212a, R 261a, C 317.]
500. **AGELAIUS TRICOLOR** (NUTT.).
 Tricolored Blackbird. [B 403, C 212b, R 262, C 318.]
501. **STURNELLA MAGNA** (LINN.).
 Meadowlark. [B 406, C 214, R 263, C 320.]
- 501a. **STURNELLA MAGNA MEXICANA** (SCR.).
 Mexican Meadowlark. [B —, C —, R 263a, C 321.]
- 501b. **STURNELLA MAGNA NEGLECTA** (AUD.).
 Western Meadowlark. [B 407, C 214a, R 264, C 322.]
- (502.) **ICTERUS ICTERUS** (LINN.).
 Troupial. [B 408, C —, R 265, C 323.]
503. **ICTERUS AUDUBONII** GIRAUD.
 Audubon's Oriole. [B 409, C 220, R 266, C 330.]
504. **ICTERUS PARISORUM** BONAP.
 Scott's Oriole. [B 411, C 219, R 265, C 329.]

514 a. *C. v. montana* (Ridgway).

Western Evening Grosbeak.

515 P. z. *canadensis* (Cab.)

515 a. P. z. *montana* Ridgw. Rocky Mt. P. G.

515 b. P. z. *californica* Price Calif. P. G.

515 c. P. z. *alascensis* Ridgw. Alaskan P. G.

515 d. P. z. *flammula* (Hornem.) Kadiak P. G.

505. **ICTERUS CUCULLATUS** SWAINS.
Hooded Oriole. [B 413, C 218, R 269, C 328.]
- 505a. **ICTERUS CUCULLATUS NELSONI** RIDGW.
Arizona Hooded Oriole. [B —, C —, R —, C —.]
506. **ICTERUS SPURIUS** (LINN.).
Orchard Oriole. [B 414, C 215, R 270, C 324.]
507. **ICTERUS GALBULA** (LINN.).
Baltimore Oriole. [B 415, C 216, R 271, C 326.]
508. **ICTERUS BULLOCKI** (SWAINS.).
Bullock's Oriole. [B 416, C 217, R 272, C 327.]
509. **SCOLECOPHAGUS CAROLINUS** (MÜLL.).
Rusty Blackbird. [B 417, C 221, R 273, C 331.]
510. **SCOLECOPHAGUS CYANOCEPHALUS** (WAGL.).
Brewer's Blackbird. [B 418, C 222, R 274, C 332.]
511. **QUISCALUS QUISCULA** (LINN.).
Purple Grackle. [B 421, C 225, R 278, C 335.]
- 511a. **QUISCALUS QUISCULA AGLÆUS** (BAIRD).
Florida Grackle. [B 422, C —, R 278a, C 336.]
- 511b. **QUISCALUS QUISCULA AENEUS** (RIDGW.).
Bronzed Grackle. [B —, C 225a, R 278b, C 337.]
512. **QUISCALUS MACROURUS** SWAINS.
Great-tailed Grackle. [B 419, C 223, R 275, C 333.]
513. **QUISCALUS MAJOR** (VIEILL.).
Boat-tailed Grackle. [B 420, C 224, R 277, C 334.]
514. **COCCOTHAUSTES VESPERTINA** (COOP.).
Evening Grosbeak. [B 303, C 136, R 165, C 189.]
- 514 c
515. **PINICOLA ENUCLEATOR** (~~LINN.~~).
Pine Grosbeak. [B 304, C 137, R 166, C 190.]
- [516.] **PYRRHULA CASSINI** (BAIRD).
Cassin's Bullfinch. [B —, C 138, R 167, C 191.]
517. **CARPODACUS PURPUREUS** (GMEL.).
Purple Finch. [B 305, C 139, R 168, C 194.]

519c. (?) *C. m. clementis* (Mearns). San Clement H. F.

520.1 *C. mcgregori* Anthony McGregor's H. F.

- 517a. **CARPODACUS PURPUREUS CALIFORNICUS** BAIRD.
California Purple Finch. [B 306, C —, R 168a, C —.]
518. **CARPODACUS CASSINI** BAIRD.
Cassin's Purple Finch. [B 307, C 140, R 169, C 195.]
519. **CARPODACUS MEXICANUS FRONTALIS** (SAY).
House Finch. [B 308, C 141, R 170, C 196.]
- 519c. **CARPODACUS MEXICANUS RUBERRIMUS** RIDGW.
St. Lucas House Finch. [B —, C 141a, R 170a, C 197.]
520. **CARPODACUS AMPLUS** RIDGW.
Guadalupe House Finch. [B —, C —, R 171, C —.]
521. **LOXIA CURVIROSTRA MINOR** (BREHM).
American Crossbill. [B 318, C 143, R 172, C 199.]
- 521a. **LOXIA CURVIROSTRA STRICKLANDI** RIDGW.
Mexican Crossbill. [B 318a, C 143a, R 172a, C 200.]
522. **LOXIA LEUCOPTERA** GMEL.
White-winged Crossbill. [B 319, C 142, R 173, C 198.]
523. **LEUCOSTICTE GRISEONUCHA** (BRANDT).
Aleutian Leucosticte. [B 323, C 144a, R 174, C 205.]
524. **LEUCOSTICTE TEPHROCOTIS** SWAINS.
Gray-crowned Leucosticte. [B 322, C 144, R 175, C 203.]
- 524a. **LEUCOSTICTE TEPHROCOTIS LITTORALIS** (BAIRD).
Hepburn's Leucosticte. [B —, C —, R 175a, C 204.]
525. **LEUCOSTICTE ATRATA** RIDGW.
Black Leucosticte. [B —, C —, R 176, C 201.]
526. **LEUCOSTICTE AUSTRALIS** (ALLEN).
Brown-capped Leucosticte. [B —, C —, R 177, C 203.]
527. **ACANTHIS HORNEMANNII** (HOLB.).
Greenland Redpoll. [B 321, C —, R 178, C 209.]
- 527a. **ACANTHIS HORNEMANNII EXILIPES** (COUES).
Hoary Redpoll. [B —, C 146b, R 178a, C 210.]
528. **ACANTHIS LINARIA** (LINN.).
Redpoll. [B 320, C 146, 146a, R 179, C 207.]

529-532 *Astragalinus*

529a *S. t. pallidus* (Nearns.) Pale G.

Western Goldfinch.

529b. *A. t. salicamans* (Gunnell). Willow G.

529b

534-535 *Passerina*

536a. *C. l. alascensis* Ridgw. Alaskan L.

53

- 528a. **ACANTHIS LINARIA HOLBELLII** (BREHM).
Holbæll's Redpoll. [B —, C —, R 179a *part*, C 208 *part*.]
- 528b. **ACANTHIS LINARIA ROSTRATA** (COUES).
Greater Redpoll. [B —, C —, R 179a *part*, C 208 *part*.]
529. ~~SPINUS TRISTIS~~ (LINN.).
American Goldfinch. [B 313, C 149, R 181, C 213.]
- 529a
530. ~~SPINUS PSALTRIA~~ (SAY).
Arkansas Goldfinch. [B 314, C 151, R 182, C 215.]
- 530a. **SPINUS PSALTRIA ARIZONÆ** (COUES).
Arizona Goldfinch. [B —, C 151a, R 182a, C 216.]
- 530b. ~~SPINUS PSALTRIA MEXICANUS~~ (SWAINS.).
Mexican Goldfinch. [B 315, C 159b, R 182b, C 217.]
531. ~~SPINUS LAWRENCEI~~ (CASS.).
Lawrence's Goldfinch. [B 316, C 159, R 183, C 214.]
- [532.] **SPINUS NOTATUS** (DEBES).
Black-headed Goldfinch. [B 310, C —, R 184, C 218.]
533. **SPINUS PINUS** (WILS.).
Pine Siskin. [B 317, C 148, R 185, C 212.]
534. ~~PLECTROPHENAX NIVALIS~~ (LINN.).
Snowflake. [B 325 *part*, C 152 *part*, R 186 *part*, C 219 *part*.]
- 534a. ~~PLECTROPHENAX NIVALIS TOWNSENDI~~ (RIDGW.).
Prybilof Snowflake. [B —, C —, R 186 *part*, C 219 *part*.]
535. ~~PLECTROPHENAX HYPERBOREÆ~~^a (RIDGW.).
McKay's Snowflake. [B —, C —, R —, C —.]
536. **CALCARIUS LAPPONICUS** (LINN.).
Lapland Longspur. [B 326, C 153, R 187, C 220.]
- 536a
537. **CALCARIUS PICTUS** (SWAINS.).
Smith's Longspur. [B 327, C 154, R 188, C 221.]
538. **CALCARIUS ORNATUS** (TOWNS.).
Chestnut-collared Longspur. [B 328, 329, C 155,
R 189, C 222.]
539. **RHYNCHOPHANES MCCOWNII** (LAWR.).
McCown's Longspur. [B 330, C 156, R 190, C 223.]

540-540 b

Pooecetes

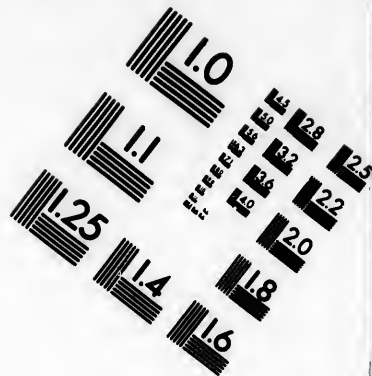
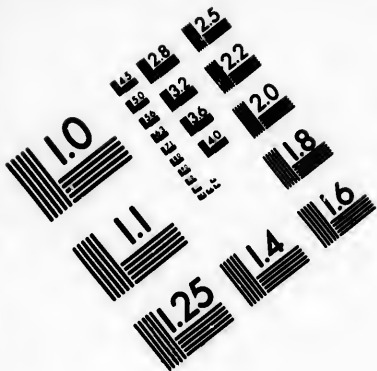
544.1. *A. sanctorum* Coues.

547 a *A. h. occidentalis* Brewst.
Western Henslow's Sparrow.

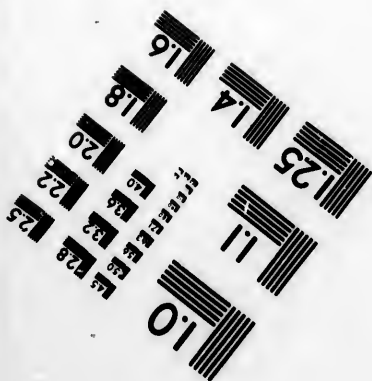
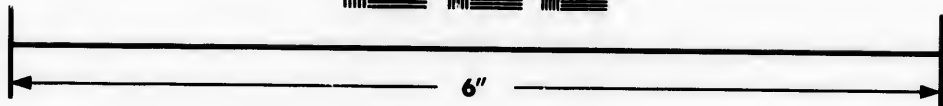
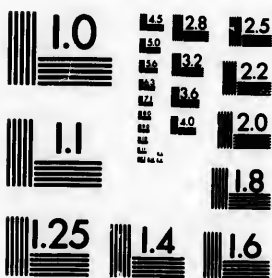
544

540. **POCETTES GRAMINEUS** (GMEI.).
Vesper Sparrow. [B 337 *part*, C 161, R 197, C 232.]
- 540a. **POCETTES GRAMINEUS CONFINIS** BAIRD.
Western Vesper Sparrow. [B 337 *part*, C 161a *part*,
R 197a *part*, C 232 *part*.]
- 540b. **POCETTES GRAMINEUS AFFINIS** MILLER.
Oregon Vesper Sparrow. [B 337 *part*, C 161a *part*,
R 197a *part*, C 232 *part*.]
541. **AMMODRAMUS PRINCEPS** (MAYN.).
Ipswich Sparrow. [B —, C 158, R 192, C 225.]
542. **AMMODRAMUS SANDWICHENSIS** (GMEI.).
Sandwich Sparrow. [B 333, C 159b, R 193, C 226.]
- 542a. **AMMODRAMUS SANDWICHENSIS SAVANNA** (WILS.).
Savanna Sparrow. [B 332, C 159, R 193a, C 227.]
- 542b. **AMMODRAMUS SANDWICHENSIS ALAUDINUS** (BONAP.).
Western Savanna Sparrow. [B 335, C —, R 193b, C 229.]
- 542c. **AMMODRAMUS SANDWICHENSIS BRYANTI** RIDGW.
Bryant's Marsh Sparrow. [B 334 *part*, C 159a *part*,
R 194 *part*, C 228 *part*.]
543. **AMMODRAMUS BELDINGI** RIDGW.
Belding's Marsh Sparrow. [B 334 *part*, C 159a *part*,
R 194 *part*, C 228 *part*.]
544. **AMMODRAMUS ROSTRATUS** CASS.
Large-billed Sparrow. [B 336, C 160, R 196, C 230.]
- 544a. **AMMODRAMUS ROSTRATUS GUTTATUS** LAWR.
St. Lucas Sparrow. [B —, C 160a, R 195, C 231.]
545. **AMMODRAMUS BAIRDII** (AUD.).
Baird's Sparrow. [B 331, C 157, 157 *bis*, R 191, C 224.]
546. **AMMODRAMUS SAVANNARUM PASSERINUS** (WILS.).
Grasshopper Sparrow. [B 338, C 162, R 198, C 234.]
- 546a. **AMMODRAMUS SAVANNARUM PERPALLIDUS** RIDGW.
Western Grasshopper Sparrow. [B 338 *part*, C 162a,
R 198a, C 235.]
547. **AMMODRAMUS HENSLOWII** (AUD.).
Henslow's Sparrow. [B 339, C 163, R 199, C 236.]
- 547a
548. **AMMODRAMUS LECONTEI** (AUD.).
Leconte's Sparrow. [B 340, C 164, R 200, C 237.]





**IMAGE EVALUATION
TEST TARGET (MT-3)**



**Photographic
Sciences
Corporation**

23 WEST MAIN STREET
WEBSTER, N.Y. 14580
(716) 872-4503

1.8
2.0
2.2
2.5
3.2
3.6
4.0

01

550 c. A. m. ~~macgillivrayi~~ Aud.
fisheri Chapman.

550 d. A. m. macgillivrayi (Aud.).

554 a chunyeatsi Zonotrichia leucophrys intermedia (Redgw.)

554 B " " " gambeli (Nutt.)

549. **AMMODRAMUS CAUDACUTUS** (GMEL.).
Sharp-tailed Sparrow. [B 341, C 166, R 201, C 240.]
- 549a. **AMMODRAMUS CAUDACUTUS NELSONI** (ALLEN).
Nelson's Sparrow. [B —, C —, R 201a, C 241.]
- 549b. **AMMODRAMUS ^{nelsoni} CAUDACUTUS SUBVIRGATUS** (DWIGHT).
Acadian Sharp-tailed Sparrow. [B —, C —,
R 201 part, C 240 part.]
550. **AMMODRAMUS MARITIMUS** (WILS.).
Seaside Sparrow. [B 342 part, C 165 part, R 202 part, C 238 part.]
- 550a. **AMMODRAMUS MARITIMUS PENINSULÆ** ALLEN.
Scott's Seaside Sparrow. [B 342 part, C 165 part,
R 202 part, C 238 part.]
- 550b. **AMMODRAMUS MARITIMUS SENNETTI** ALLEN.
Texas Seaside Sparrow. [B —, C —, R 202 part, C 238 part.]
- 550 c
550 d
551. **AMMODRAMUS NIGRESCENS** RIDGW.
Dusky Seaside Sparrow. [B —, C 165a, R 203, C 239.]
552. **CHONDESTES GRAMMACUS** (SAY).
Lark Sparrow. [B 344 part, C 186 part, R 204, C 581 part.]
- 552a. **CHONDESTES GRAMMACUS STRIGATUS** (SWAINS.).
Western Lark Sparrow. [B 344 part, C 186 part,
R 204a, C 281 part.]
553. **ZONOTRICHIA QUERULA** (NUTT.).
Harris's Sparrow. [B 348, C 185, R 205, C 280.]
554. **ZONOTRICHIA LEUCOPHRYS** (FORST.).
White-crowned Sparrow. [B 345, C 183, R 206, C 276.]
- x 555. **ZONOTRICHIA INTERMEDIA** RIDGW.
554 a) Intermediate Sparrow. [B 346 part, C 183b, R 207a, C 277.]
- x 556. **ZONOTRICHIA GAMBELI** (NUTT.).
554 b) Gambel's Sparrow. [B 346 part, C 183a, R 207, C 278.]
557. **ZONOTRICHIA CORONATA** (PALL.).
Golden-crowned Sparrow. [B 347, C 184, R 208, C 279.]
558. **ZONOTRICHIA ALBICOLLIS** (GMEL.).
White-throated Sparrow. [B 349, C 182, R 209, C 275.]
559. **SPIZELLA MONTICOLA** (GMEL.).
Tree Sparrow. [B 357 part, C 177 part, R 210 part, C 268 part.]

567.1 J. montanus

567b. J. h. ^{connectens Coues}
~~shepfieldti~~ Coues

567c. J. h. ^{Shepfield's Junco.}
thurberi Anthony.

567d. J. h. ^{Thurber's Junco.}
pinosus Loomis

568.1 J. ^{Pinus Junco.}
~~annectens Baird~~ ^{annectens Baird} ~~annectens~~

Ridgway's Junco.

568. J. mearnai Ridgway.

567

567d

567c

- 559a. **SPIZELLA MONTICOLA OCHRACEA** BREWST.
Western Tree Sparrow. [B 357 *part*, C 177 *part*,
R 210 *part*, C 268 *part*.]
560. **SPIZELLA SOCIALIS** (WILS.).
Chipping Sparrow. [B 359 *part*, C 178, R 211, C 269.]
- 560a. **SPIZELLA SOCIALIS ARIZONÆ** COUES.
Western Chipping Sparrow. [B 359 *part*, C 178a,
R 211a, C 270.]
561. **SPIZELLA PALLIDA** (SWAINS.).
Clay-colored Sparrow. [B 360, C 180, R 212, C 272.]
562. **SPIZELLA BREWERI** CASS.
Brewer's Sparrow. [B 361, C 180a, R 213, C 273.]
563. **SPIZELLA PUSILLA** (WILS.).
Field Sparrow. [B 358, C 179, R 214, C 271.]
- 563a. **SPIZELLA PUSILLA ARENACEA** CHADB.
Western Field Sparrow. [B —, C —, R —, C —.]
564. **SPIZELLA WORTHENI** RIDGW.
Worthen's Sparrow. [B —, C —, R —, C —.]
565. **SPIZELLA ATRIGULARIS** (CAB.).
Black-chinned Sparrow. [B 362, C 181, R 215, C 274.]
566. **JUNCO AIKENI** RIDGW.
White-winged Junco. [B —, C 174a, R 216, C 262.]
567. **JUNCO HYEMALIS** (LINN.).
Slate-colored Junco. [B 354 *part*, C 174 *part*,
R 217 *part*, C 261 *part*.]
- 567a. **JUNCO HYEMALIS OREGONUS** (TOWNS.).
Oregon Junco. [B 352, C 175, R 218, C 263.]
- 567b. *hyemalis*
567d. 567c. **JUNCO CAROLINENSIS** BREWST.
567e. ~~567d~~ Carolina Junco. [B 354 *part*, C 174 *part*, R 217 *part*, C 261 *part*.]
568. **JUNCO ANNECTENS BAIRD.**
Pink-sided Junco. [B —, C —, R 219, C 264.]
- 568.1
569. **JUNCO CANICEPS** (WOODH.).
Gray-headed Junco. [B 353, C 176, R 220, C 265.]
570. **JUNCO CINEREUS PALLIATUS** RIDGW.
Arizona Junco. [B 350 *part*, C —, R 222 *part*, C 267 *part*.]

571.1 *Junco townsendi* (Anthony)
Townsend's Junco.

573a. *A. b. deserticola* Ridgw. Desert S.

574 b. *A. b. cinerea*, Townsend
Gray Sage Sparrow.

579-580b *Aimophila*

580a. *a. r. scottii* (Bennett).

580c. *a. r. sororia* Ridgw.

- 570a. **JUNCO CINEREUS DORSALIS** (HENRY).
Red-backed Junco. [B 351, C —, R 221, C 266.]
571. **JUNCO BAIRDI** BELDING.
Baird's Junco. [B —, C —, R —, C —.]
- 571.1
572. **JUNCO INSULARIS** RIDGW.
Guadalupe Junco. [B —, C —, R 223, C —.]
573. **AMPHISPIZA BILINEATA** (CASS.).
573a Black-throated Sparrow. [B 355, C 172, R 224, C 258.]
574. **AMPHISPIZA BELLI** (CASS.).
Bell's Sparrow. [B 356, C 173, R 225, C 259.]
- 574a. **AMPHISPIZA BELLI NEVADENSIS** (RIDGW.).
574b Sage Sparrow. [B —, C 173a, R 225a, C 260.]
575. **PEUCÆA ÆSTIVALIS** (LICHT.).
Pine-woods Sparrow. [B 370 part, C 170 part, R 226, C 251.]
- 575a. **PEUCÆA ÆSTIVALIS BACHMANII** (AUD.).
Bachman's Sparrow. [B 370 part, C 170 part, R 226a, C 252.]
576. **PEUCÆA ARIZONÆ** RIDGW.
Arizona Sparrow. [B —, C 170a, R 227, C 253.]
577. **PEUCÆA MEXICANA** (LAWR.).
Mexican Sparrow. [B —, C —, R —, C —.]
578. **PEUCÆA CASSINI** (WOODH.).
Cassin's Sparrow. [B 371, C 170 bis, R 228, C 254.]
579. **PEUCÆA CARPALIS** (COUES.).
Rufous-winged Sparrow. [B —, C 171 bis, R 229, C 257.]
580. **PEUCÆA RUFICEPS** (CASS.).
Rufous-crowned Sparrow. [B 372, C 171, R 230, C 255.]
- 580a. **PEUCÆA RUFICEPS BOUGARDI** (SELA.).
Boucard's Sparrow. [B —, C —, R 230a, C 256.]
- 580b. **PEUCÆA RUFICEPS EREMŒCA** BROWN.
580c Rock Sparrow. [B —, C —, R —, C —.]
581. **MELOSPIZA FASCIATA** (GMBL.).
Song Sparrow. [B 363, C 169, R 231, C 244.]

5817 M f Judda Warbler
 5818 M f Marshall's Sparrow
 5819 M f ... Bird

5820 M f. ...
 5821 M f. ...
 5822 ...
 5823 ...
 5824 ...

585 d P. i stephensi Anthony.

586 Arremonops rufirostrata (Laird.)

- 581a. **MELOSPIZA FASCIATA FALLAX** (BAIRD).
Desert Song Sparrow. [B 357, C 169a part,
R 231a part, C 245 part.]
- 581b. **MELOSPIZA FASCIATA MONTANA** HENSH.
Mountain Song Sparrow. [B —, C 169a part,
R 231a part, C 245 part.]
- 581c. **MELOSPIZA FASCIATA HEERMANNI** (BAIRD).
Heermann's Song Sparrow. [B 364, C 169d, R 231b, C 248.]
- 581d. **MELOSPIZA FASCIATA SAMUELIS** (BAIRD).
Samuels's Song Sparrow. [B 343, 365, C 169c, R 231c, C 249.]
- 581e. **MELOSPIZA FASCIATA GUTTATA** (NUTT.).
Rusty Song Sparrow. [B —, C 169b, R 231d, C 246.]
- 581f. **MELOSPIZA FASCIATA RUFINA** (BONAP.).
Sooty Song Sparrow. [B 366, C 169c, R 231e, C 247.]
- 581g. **MELOSPIZA FASCIATA RIVULARIS** BRYANT.
Brown's Song Sparrow. [B —, C —, R —, C —.]
- 581 h.
581 i.
582. **MELOSPIZA CINEREA** (GMEL.).
Aleutian Song Sparrow. [B —, C 169f, R 232, C 250.]
583. **MELOSPIZA LINCOLNI** (AUD.).
Lincoln's Sparrow. [B 368, C 167, R 234, C 242.]
- 583 a
584. **MELOSPIZA GEORGIANA** (LATH.).
Swamp Sparrow. [B 369, C 168, R 233, C 243.]
585. **PASSERELLA ILIACA** (MERR.).
Fox Sparrow. [B 374, C 188, R 235, C 282.]
- 585a. **PASSERELLA ILIACA UNALASCHCENSIS** (GMEL.).
Townsend's Sparrow. [B 375, C 189, R 235a, C 283.]
- 585b. **PASSERELLA ILIACA MEGARHYNCHA** (BAIRD).
Thick-billed Sparrow. [B 376a, C —, R 235b, C 285.]
- 585c. **PASSERELLA ILIACA SCHISTACEA** (BAIRD).
Slate-colored Sparrow. [B 376, C 189a, R 235c, C 284.]
586. ~~**EMBERNAGRA RUFIVIRGATA**~~ LAWR.
Texas Sparrow. [B 373, C 209, R 236, C 311.]
587. **PIPILO ERYTHROPHthalmus** (LINN.).
Towhee. [B 391, C 204, R 237, C 301.]

588c P. m. clementae (Grinnell).

592.1 ~~Pipilo chlorurus~~
Oreospiza chlorura (Aud.)

593c. C. c. canicaudus. Chapman.

Gray-tailed Cardinal.

593d. C. c. floridanus Ridgw.

- 587a. **PIPILO ERYTHROPHthalmus ALLENI** COUES.
White-eyed Towhee. [B —, C 204a, R 237a, C 302.]
588. **PIPILO MACULATUS ARCTICUS** (SWAINS.).
Arctic Towhee. [B 393, C 205a, R 238, C 304.]
- 588a. **PIPILO MACULATUS MEGALONYX** (BAIRD).
Spurred Towhee. [B 394, C 205b, R 238a, C 305.]
- 588b. **PIPILO MACULATUS OREGONUS** (BELL).
588c Oregon Towhee. [B 392, C 205, R 238b, C 303.]
589. **PIPILO CONSOBRINUS** RIDGW.
Guadalupe Towhee. [B —, C —, R 238c, C —.]
590. ~~**PIPILO CHLORERUS** (TOWNS.).~~
~~Green-tailed Towhee. [B 398, C 208, R 239, C 310.]~~
591. **PIPILO FUSCUS MESOLEUCUS** (BAIRD).
Cañon Towhee. [B 397, C 206, R 240, C 306.]
- 591a. **PIPILO FUSCUS ALBIGULA** (BAIRD).
St. Lucas Towhee. [B —, C 206a, R 240a, C 307.]
- 591b. **PIPILO FUSCUS CRISSALIS** (VIG.).
Californian Towhee. [B 396, C 206b, R 240b, C 308.]
592. **PIPILO ABERTI** BAIRD.
592. 1 Abert's Towhee. [B 395, C 207, R 241, C 309.]
593. **CARDINALIS CARDINALIS** (LINN.).
Cardinal. [B 390, C 203, R 242, C 299.]
- 593a. **CARDINALIS CARDINALIS SUPERBUS** RIDGW.
Arizona Cardinal. [B —, C 203a part, R 242a part, C 300 part.]
- 593b. **CARDINALIS CARDINALIS IGNEUS** (BAIRD).
593c St. Lucas Cardinal. [B —, C 203a part,
R 242a part, C 300 part.]
594. **PYRRHULOXIA SINUATA** BONAP.
Texan Cardinal. [B 389 part, C 202 part, R 243 part, C 298 part.]
- 594a. **PYRRHULOXIA SINUATA BECKHAMI** RIDGW.
Arizona Pyrrhuloxia. [B 389 part, C 202 part,
R 243 part, C 298 part.]
- 594b. **PYRRHULOXIA SINUATA PENINSULÆ** RIDGW.
St. Lucas Pyrrhuloxia. [B 389 part, C 202 part,
R 243 part, C 298 part.]

595. *Zamelodia ludoviciana* (Linn.)

596. "

597a *G. c. lazula* (Lesson).

598-601 *Cyanospiza*

595. ~~HABIA~~ **LUDOVICIANA** (LINN.).
Rose-breasted Grosbeak. [B 380, C 193, R 244, C 289.]
596. ~~HABIA~~ **MELANOCEPHALA** (SWAINS.).
Black-headed Grosbeak. [B 381, C 194, R 245, C 290.]
597. **GUIRACA CÆRULEA** (LINN.).
Blue Grosbeak. [B 382 *part*, C 195 *part*, R 246 *part*, C 291 *part*.]
- 597a. **GUIRACA CÆRULEA EURHYNCHA** ~~COUES.~~
Western Blue Grosbeak. [B 382 *part*, C 195 *part*,
R 246 *part*, C 291 *part*.]
598. ~~PASSERINA~~ **CYANEA** (LINN.).
Indigo Bunting. [B 387, C 199, R 248, C 295.]
599. ~~PASSERINA~~ **AMCENA** (SAY).
Lazuli Bunting. [B 386, C 200, R 249, C 296.]
600. ~~PASSERINA~~ **VERSICOLOR** (BONAP.).
Varied Bunting. [B 385 *part*, C 197 *part*,
R 250 *part*, C 293 *part*.]
- 600a. ~~PASSERINA~~ **VERSICOLOR PULCHRA** (RIDGW.).
Beautiful Bunting. [B 385 *part*, C 197 *part*,
R 250 *part*, C 293 *part*.]
601. ~~PASSERINA~~ **CIRIS** (LINN.).
Painted Bunting. [B 384, C 196, R 251, C 292.]
602. **SPOROPHILA MORELLETI SHARPEI** LAWR.
Sharpe's Seed-eater. [B 388, C 200, R 252, C 296.]
603. **EUETHEIA BICOLOR** (LINN.).
Grassquit. [B —, C 201, R 253, C 297.]
- [603.1] **EUETHEIA CANORA** (GMEL.).
Melodious Grassquit. [B —, C —, R —, C —.]
604. **SPIZA AMERICANA** (GMEL.).
Dickeissel. [B 378, C 191, R 254, C 287.]
605. **CALAMOSPIZA MELANOCORYS** STEJN.
Lark Bunting. [B 377, C 190, R 256, C 286.]
606. **EUPHONIA ELEGANTISSIMA** (BONAP.).
Blue-headed Euphonia. [B 224, C —, R 160, C —.]
607. **PIRANGA LUDOVICIANA** (WILS.).
Louisiana Tanager. [B 223, C 110, R 162, C 158.]

611 a *Progne subis hesperia* (Brewst.)
Western Martin.

[612.1] *P. fulva* (Vieill.).
Cuban Cliff Swallow.

613 *Hirundo*

[615.1] *Callihelidon cyaneoviridis*. Boyant
Bahama Swallow.

- [607.1] **PIRANGA RUBRICEPS** GRAY.
Gray's Tanager. [B —, C —, R —, C —.]
608. **PIRANGA ERYTHROMELAS** VIEILL.
Scarlet Tanager [B 220, C 107, R 161, C 154.]
609. **PIRANGA HEPATICA** SWAINS.
Hepatic Tanager. [B 222, C 109, R 163, C 157.]
610. **PIRANGA RUBRA** (LINN.).
Summer Tanager. [B 221, C 108, R 164, C 155.]
- 610a. **PIRANGA RUBRA COOPERI** RIDGW.
Cooper's Tanager. [B —, C 108a, R 164a, C 156.]
611. **PROGNE SUBIS** (LINN.).
611 a. Purple Martin. [B 231, C 117, R 152, C 165.]
- [611.1] **PROGNE CRYPTOLEUCA** BAIRD.
Cuban Martin. [B 231a, C —, R 152a, C —.]
612. **PETROCHELIDON LUNIFRONS** (SAY).
Cliff Swallow. [B 226, C 114, R 153, C 162.]
- [612.] 613. ~~CHELIDON~~ **ERYTHROGASTER** (BODD.).
Barn Swallow. [B 225, C 111, R 154, C 159.]
614. **TACHYGINETA BICOLOR** (VIEILL.).
Tree Swallow. [B 227, C 112, R 155, C 160.]
615. **TACHYGINETA THALASSINA** (SWAINS.).
Violet-green Swallow. [B 228, C 113, R 156, C 161.]
- [615.] 616. **CLIVICOLA RIPARIA** (LINN.).
Bank Swallow. [B 229, C 115, R 157, C 163.]
617. **STELGIDOPTERYX SERripENNIS** (AUD.).
Rough-winged Swallow. [B 230, C 116, R 158, C 164.]
618. **AMPELIS GARRULUS** LINN.
Bohemian Waxwing. [B 232, C 118, R 150, C 166.]
619. **AMPELIS CEDRORUM** (VIEILL.).
Cedar Waxwing. [B 233, C 119, R 151, C 167.]
320. **PHAINOPEPLA NITENS** (SWAINS.).
Phainopepla. [B 234, C 120, R 26, C 168.]

622c. *L. l. anthonyi* Mearns.

623. see arch VIII - pp 90.

629d. *V. s. lucasanus* Brewst.
St. Lucas Solitary Vireo.

621. **LANIUS BOREALIS** VIEILL.
Northern Shrike. [B 236, C 134, R 148, C 186.]
622. **LANIUS LUDOVICIANUS** LINN.
Loggerhead Shrike. [B 237, C 135, R 149, C 187.]
- 622a. **LANIUS LUDOVICIANUS EXCUBITORIDES** (SWAINS.).
White-rumped Shrike. [B 238 *part*, C 135a *part*,
R 149a *part*, C 188 *part*.]
- 622b. **LANIUS LUDOVICIANUS GAMBELI** RIDGW.
California Shrike. [B 238 *part*, C 135a *part*,
R 149a *part*, C 188 *part*.]
- 623 ~~623~~ **VIREO ALTILOQUUS BARBATULUS** (CAB.).
Black-whiskered Vireo. [B 243, C 123, R 137, C 172.]
624. **VIREO OLIVACEUS** (LINN.).
Red-eyed Vireo. [B 240, C 122, R 135, C 170.]
625. **VIREO FLAVOVIRIDIS** (CASS.).
Yellow-green Vireo. [B 241, C —, R 136, C 171.]
626. **VIREO PHILADELPHICUS** (CASS.).
Philadelphia Vireo. [B 244, C 124, R 138, C 173.]
627. **VIREO GILVUS** (VIEILL.).
Warbling Vireo. [B 245, C 125, 125a, R 139, 139a, C 174, 175.]
628. **VIREO FLAVIFRONS** VIEILL.
Yellow-throated Vireo. [B 252, C 126, R 140, C 176.]
629. **VIREO SOLITARIUS** (WILS.).
Blue-headed Vireo. [B 250 *part*, C 127 *part*,
R 141 *part*, C 177 *part*.]
- 629a. **VIREO SOLITARIUS CASSINII** (XANTUS).
Cassin's Vireo. [B 251, C —, R 141a, C 178.]
- 629b. **VIREO SOLITARIUS PLUMBEUS** (COUES).
Plumbeous Vireo. [B —, C 127a, R 141b, C 179.]
- 629c. **VIREO SOLITARIUS ALTICOLA** BREWST.
Mountain Solitary Vireo. [B 250 *part*, C 127 *part*,
R 141 *part*, C 177 *part*.]
630. **VIREO ATRICAPILLUS** WOODH.
Black-capped Vireo. [B 427, C 133, R 142, C 185.]
631. **VIREO NOVEBORACENSIS** (GMEL.).
White-eyed Vireo. [B 248, C 129, R 143, C 181.]

- 631a. **VIREO NOVEBORACENSIS MAYNARDI** BREWST.
Key West Vireo. [B —, C —, R —, C —.]
632. **VIREO HUTTONI** CASS.
Hutton's Vireo. [B 249, C 130, R 144, C 182.]
- 632a. **VIREO HUTTONI STEPHENSI** BREWST.
Stephens's Vireo. [B —, C —, R —, C —.]
633. **VIREO BELLII** (AUD.).
Bell's Vireo. [B 246, C 131, R 145, C 183.]
- 633a. **VIREO BELLII PUSILLUS** (COUES).
Least Vireo. [B —, C 132, R 146, C 184.]
634. **VIREO VICINIOR** COUES.
Gray Vireo. [B —, C 128, R 147, C 180.]
635. **OCEREBIA BAHAMENSIS** (REICH.).
Bahama Honey Creeper. [B 301, C 106, R 159, C 153.]
636. **MNIOTILTA VARIA** (LINN.).
Black and White Warbler. [B 167, C 57, R 74, 74a, C 91, 92.]
637. **PROTONOTARIA CITREA** (BODD.).
Prothonotary Warbler. [B 169, C 59, R 75, C 95.]
638. **HELINAIA SWAINSONII** AUD.
Swainson's Warbler. [B 179, C 61, R 75, C 97.]
639. **HELMITHERUS VERMIVORUS** (GMEL.).
Worm-eating Warbler. [B 178, C 60, R 77, C 96.]
640. **HELMINTHOPHILA BACHMANI** (AUD.).
Bachman's Warbler. [B 182, C 64, R 78, C 103.]
641. **HELMINTHOPHILA PINUS** (LINN.).
Blue-winged Warbler. [B 180, C 62, R 79, C 98.]
642. **HELMINTHOPHILA CHRYSOPTERA** (LINN.).
Golden-winged Warbler. [B 181, C 63, R 81, C 102.]
643. **HELMINTHOPHILA LUCIÆ** (COOPER).
Lucy's Warbler. [B —, C 65, R 83, C 104.]
644. **HELMINTHOPHILA VIRGINIÆ** (BAIRD).
Virginia's Warbler. [B —, C 66, R 84, C 105.]

645. *H. rubricapilla* (Wils.)

645a. *H. r. g.* ~~—————~~

646b. *H. c. sordida*. Townsend
Dusky Warbler.

648a. *C. a. usnea* Brewster
Woodton Parula Warbler

652b. *D. a. rubiginosa* (Pall.).

654a. *D. c. cairnsi* Coues

645. **HELMINTHOPHILA RUFICAPILLA** (WILS.).
Nashville Warbler. [B 183 *part*, C 67 *part*,
R 85 *part*, C 106 *part*.]
- 645a. **HELMINTHOPHILA RUFICAPILLA GUTTURALIS** RIDGW.
Calaveras Warbler. [B 183 *part*, C 67 *part*,
R 85 *part*, C 106 *part*.]
646. **HELMINTHOPHILA CELATA** (SAY).
Orange-crowned Warbler. [B 184 *part*, C 68, R 86, C 107.]
- 646a. **HELMINTHOPHILA CELATA LUTESCENS** RIDGW.
646b. Lutescent Warbler. [B 184 *part*, C 68a, R 86a, C 108.]
647. **HELMINTHOPHILA PEREGRINA** (WILS.).
Tennessee Warbler. [B 185, C 69, R 87, C 109.]
648. **COMPSOTHTYPIS AMERICANA** (LINN.).
Parula Warbler. [B 168, C 58, R 88, C 93.]
649. **COMPSOTHTYPIS NIGRILORA** (COUES).
Sennett's Warbler. [B —, C —, R 89a, C 94.]
650. **DENDROICA TIGRINA** (GMEL.).
Cape May Warbler. [B 206, C 85, R 90, C 126.]
651. **DENDROICA OLIVACEA** (GIRAUD).
Olive Warbler. [B —, C —, R 92, C 110.]
652. **DENDROICA ÆSTIVA** (GMEL.).
Yellow Warbler. [B 203 *part*, C 70 *part*, R 93 *part*, C 111 *part*.]
- 652a. **DENDROICA ÆSTIVA SONORANA** BREWST.
Sonora Yellow Warbler. [B 203 *part*, C 70 *part*,
R 93 *part*, C 111 *part*.]
653. **DENDROICA BRYANTI CASTANEICEPS** RIDGW.
Mangrove Warbler. [B —, C —, R —, C —.]
654. **DENDROICA CÆRULESCENS** (GMEL.).
Black-throated Blue Warbler. [B 193, C 76, R 94, C 117.]
655. **DENDROICA CORONATA** (LINN.).
Myrtle Warbler. [B 194, C 78, R 95, C 119.]
656. **DENDROICA AUDUBONI** (TOWNS.).
Audubon's Warbler. [B 195, C 79, R 95, C 120.]
657. **DENDROICA MACULOSA** (GMEL.).
Magnolia Warbler. [B 204, C 84, R 97, C 125.]

658. *D. rara* Wils.

658. **DENDROICA CERULEA** (WILS.).
Cerulean Warbler. [B 201, C 77, R 98, C 118.]
659. **DENDROICA PENNSYLVANICA** (LINN.).
Chestnut-sided Warbler. [B 200, C 83, R 99, C 124.]
660. **DENDROICA CASTANEA** (WILS.).
Bay-breasted Warbler. [B 197, C 82, R 100, C 123.]
661. **DENDROICA STRIATA** (FORST.).
Black-poll Warbler. [B 202, C 81, R 101, C 122.]
662. **DENDROICA BLACKBURNIÆ** (GMEL.).
Blackburnian Warbler. [B 196, C 80, R 102, C 121.]
663. **DENDROICA DOMINICA** (LINN.).
Yellow-throated Warbler. [B 209 *part*, C 88, R 103, C 129.]
- 663a. **DENDROICA DOMINICA ALBILORA** BAIRD.
Sycamore Warbler. [B 209 *part*, C 88a, R 103a, C 130.]
664. **DENDROICA GRACIÆ** COUES.
Grace's Warbler. [B —, C 87, R 104, C 128.]
665. **DENDROICA NIGRESCENS** (TOWNS.).
Black-throated Gray Warbler. [B 192, C 75, R 105, C 116.]
666. **DENDROICA CHRYSOPARIA** SCL. & SALV.
Golden-cheeked Warbler. [B —, C 74, R 106, C 115.]
667. **DENDROICA VIRENS** (GMEL.).
Black-throated Green Warbler. [B 189, C 71, R 107, C 112.]
668. **DENDROICA TOWNSENDI** (NUTT.).
Townsend's Warbler. [B 191, C 73, R 108, C 114.]
669. **DENDROICA OCCIDENTALIS** (TOWNS.).
Hermit Warbler. [B 190, C 72, R 109, C 113.]
670. **DENDROICA KIRTLANDI** BAIRD.
Kirtland's Warbler. [B 205, C 89, R 110, C 131.]
671. **DENDROICA VIGORSII** (AUD.).
Pine Warbler. [B 198, C 91, R 111, C 134.]
672. **DENDROICA PALMARUM** (GMEL.).
Palm Warbler. [B 208 *part*, C 90 *part*, R 113, C 132.]

680. *G. tolmiei* (Towns.)

681 B *Geothlypis trichas ignota* (Chapm.)
Florida Yellow-throat

682-1 *G. poliocephala palpebralis* (Ridgw.)
Mirador Yellowthroat.

684-686 *Wilsonia*

- 672a. **DENDROICA PALMARUM HYPOCHRYSEA** RIDGW.
Yellow Palm Warbler. [B 208 *part*, C 90 *part*, R 113a, C 133.]
673. **DENDROICA DISCOLOR** (VIEILL.).
Prairie Warbler. [B 210, C 86, R 114, C 127.]
674. **SEIURUS AUROCAPILLUS** (LINN.).
Oven-bird. [B 186, C 92, R 115, C 135.]
675. **SEIURUS NOVEBORACENSIS** (GMEL.).
Water-Thrush. [B 187 *part*, C 93 *part*, R 116, C 136.]
- 675a. **SEIURUS NOVEBORACENSIS NOTABILIS** (GRINN.).
Grinnell's Water-Thrush. [B 187 *part*, C 93 *part*,
R 116a, C 137.]
676. **SEIURUS MOTACILLA** (VIEILL.).
Louisiana Water-Thrush. [B 188, C 94, R 117, C 138.]
677. **GEOTHLYPIS FORMOSA** (WILS.).
Kentucky Warbler. [B 175, C 96, R 119, C 140.]
678. **GEOTHLYPIS AGILIS** (WILS.).
Connecticut Warbler. [B 174, C 95, R 118, C 139.]
679. **GEOTHLYPIS PHILADELPHIA** (WILS.).
Mourning Warbler. [B 172, C 98, R 120, C 142.]
680. **GEOTHLYPIS MACGILLIVRAYI** (AUD.).
Macgillivray's Warbler. [B 173, C 99, R 121, C 143.]
681. **GEOTHLYPIS TRICHAS** (LINN.).
Maryland Yellow-throat. [B 170 *part*, C 97 *part*,
R 122 *part*, C 141 *part*.]
- 681a. **GEOTHLYPIS TRICHAS OCCIDENTALIS** BREWST.
Western Yellow-throat. [B 170 *part*, C 97 *part*,
R 122 *part*, C 141 *part*.]
- 681b
682. **GEOTHLYPSIS BELDINGI** RIDGW.
682:1 Belding's Yellow-throat. [B —, C —, R —, C —.]
683. **ICTERIA VIRENS** (LINN.).
Yellow-breasted Chat. [B 176, C 100, R 123, C 144.]
- 683a. **ICTERIA VIRENS LONGICAUDA** (LAWR.).
Long-tailed Chat. [B 177, C 100a, R 123a, C 145.]
684. **SYLVANIA MITRATA** (GMEL.).
Hooded Warbler. [B 211, C 101, R 124, C 146.]

684-686 Wilsonia

685. **SYLVANIA PUSILLA** (WILS.).
Wilson's Warbler. [B 213 *part*, C 102, R 125, C 147.]
- 685a. **SYLVANIA PUSILLA PILEOLATA** (PALL.).
Pileolated Warbler. [B 213 *part*, C 102a, R 125a, C 148.]
686. **SYLVANIA CANADENSIS** (LINN.).
Canadian Warbler. [B 214, 215, C 103, R 127, C 149.]
687. **SETOPHAGA RUTICILLA** (LINN.).
American Redstart. [B 217, C 104, R 128, C 152.]
688. **SETOPHAGA PICTA** SWAINS.
Painted Redstart. [B 218, C 105, R 129, C 151.]
- [689.] **SETOPHAGA MINIATA** SWAINS.
Red-bellied Redstart. [B 219, C —, R 130, C —.]
690. **CARDELLINA RUBRIFRONS** (GIRAUD).
Red-faced Warbler. [B —, C —, R 131, C 150.]
- [691.] **ERGATICUS RUBER** (SWAINS.).
Red Warbler. [B 216, C —, R 132, C —.]
- [692.] **BASILEUTERUS CULICIVORUS** (LICHT.).
Brasher's Warbler. [B —, C —, R 133, C —.]
- [693.] **BASILEUTERUS BELLI** (GIRAUD).
Bell's Warbler. [B —, C —, R 134, C —.]
- [694.] **MOTACILLA ALBA** LINN.
White Wagtail. [B —, C —, R 69, C 86.]
- [695.] **MOTACILLA OCULARIS** SWINH.
Swinhoe's Wagtail. [B —, C —, R —, C —.]
696. **BUDYTES FLAVUS LEUCOSTRIATUS** (HOM.).
Siberian Yellow Wagtail. [B —, C 54, R 70, C 87.]
697. **ANTHUS PENSILVANICUS** (LATH.).
American Pipit. [B 165, C 55, R 71, C 89.]
- [698.] **ANTHUS PRATENSIS** (LINN.).
Meadow Pipit. [B —, C 55 *bis*, R 72, C 88.]
- [699.] **ANTHUS CERVINUS** (PALLAS).
Red-throated Pipit. [B —, C —, R —, C —.]

710 a. *H. r. pasadenensis* Grinnell.

711 a. *H. l. arenicola* Anthony

713 } see Auk x1. 48.
714 }

700. **ANTHUS SPRAGUEII** (AUD.).
Sprague's Pipit. [B 166, C 56, R 73, C 90.]
701. **CINCLUS MEXICANUS** SWAINS.
American Dipper. [B 164, C 19, R 19, C 30.]
702. **OROSCOPTES MONTANUS** (TOWNS.).
Sage Thrasher. [B 255, C 7, R 10, C 14.]
703. **MIMUS POLYGLOTTOS** (LINN.).
Mockingbird. [B 253, 253a, C 8, R 11, C 15.]
704. **GALEOSCOPTES CAROLINENSIS** (LINN.).
Catbird. [B 254, C 9, R 12, C 16.]
705. **HARPORHYNCHUS RUFUS** (LINN.).
Brown Thrasher. [B 261, 261a, C 10, R 13, C 17.]
706. **HARPORHYNCHUS LONGIROSTRIS SENNETTI** RIDGW.
Texas Thrasher. [B 260, C 10a, R 13a, C 18.]
707. **HARPORHYNCHUS CURVIROSTRIS** (SWAINS.).
Curve-billed Thrasher. [B 259, 259a, C —, R 15, C 19.]
- 707a. **HARPORHYNCHUS CURVIROSTRIS PALMERI** RIDGW.
Palmer's Thrasher. [B —, C 11, R 15a, C 20.]
708. **HARPORHYNCHUS BENDIREI** COUES.
Bendire's Thrasher. [B —, C 11 bis, R 14a, C 21.]
709. **HARPORHYNCHUS CINEREUS** XANTUS.
St. Lucas Thrasher. [B —, C 12, R 14, C 22.]
710. **HARPORHYNCHUS REDIVIVUS** (GAMB.).
Californian Thrasher. [B 256, C 13, R 16, C 23.]
- 710 a
711. **HARPORHYNCHUS LECONTEI** (LAWR.).
Leconte's Thrasher. [B 257, C 13a, R 16a, C 24.]
- 711 a
712. **HARPORHYNCHUS CRISSALIS** (HENRY).
Crissal Thrasher. [B 258, C 14, R 17, C 25.]
- Helodytes*
713. ~~CAMPYLORHYNCHUS BRUNNEICAPILLUS~~ (LAFR.).
Cactus Wren. [B 262, C 43, R 56, C 63.]
- Helodytes*
714. ~~CAMPYLORHYNCHUS AFFINIS~~ (XANTUS.).
St. Lucas Cactus Wren. [B —, C 44, R 57, C 64.]

717. *C. m. albifrons* (Giraud).

718 B *Thryothorus ludovicianus lomitensis* (Penn)
Lomita Wren.

719-720 *Thryomanes*

719a *J. b. leucogaster* (Baird).

719.1 *J. leucophrys* (Anthony).

722-723 *Anorthura*

715. **SALPINCTES OBSOLETUS** (SAY).
Rock Wren. [B 264, C 45, R 58, C 65.]
716. **SALPINCTES GUADELOUPENSIS** RIDGW.
Guadalupe Rock Wren. [B —, C —, R 58a, C —.]
717. **CATHERPES MEXICANUS** ~~(Swains.)~~
White-throated Wren. [B 263, C —, R 59, C 66.]
- 717a. **CATHERPES MEXICANUS CONSPERSUS** RIDGW.
Cañon Wren. [B 263 *part*, C 46, R 59a, C 67.]
- 717c. **CATHERPES MEXICANUS PUNCTULATUS** RIDGW.
Dotted Cañon Wren. [B 263 *part*, C 46 *part*,
R 59 *part*, C 67 *part*.]
718. **THRYOTHORUS LUDOVICIANUS** (LATH.).
Carolina Wren. [B 265, C 47, R 60, C 68.]
- 718a. **THRYOTHORUS LUDOVICIANUS MIAMENSIS** RIDGW.
Florida Wren. [B 265 *part*, C 47 *part*, R 60b, C 69.]
718b.
719. **THRYOTHORUS BEWICKII** (AUD.).
Bewick's Wren. [B 267, C 48, R 61, C 71.]
- 719a. **THRYOTHORUS BEWICKII SPILURUS** (VIG.).
Vigors's Wren. [B —, C 48b, R 61a, C 73.]
- 719b. **THRYOTHORUS BEWICKII BAIRDI** ~~(SALV. & GOMM.)~~
Baird's Wren. [B —, C 48a, R 61b, C 72.]
719.1.
720. **THRYOTHORUS BREVICAUDUS**^a RIDGW.
Guadalupe Wren. [B —, C —, R 62, C —.]
721. **TROGLODYTES AËDON** VIEILL.
House Wren. [B 270, 272, C 49, R 63, C 74.]
- 721a. **TROGLODYTES AËDON PARKMANII** (AUD.).
Parkman's Wren. [B 271 *part*, C 49a *part*,
R 63a *part*, C 75 *part*.]
- 721b. **TROGLODYTES AËDON AZTECUS** (BAIRD).
Western House Wren. [B 271 *part*, C 49a *part*,
R 63a *part*, C 75 *part*.]
722. **TROGLODYTES HIEMALIS** (VIEILL.).
Winter Wren. [B 273, C 50, R 65, C 76.]
- 722a. **TROGLODYTES HIEMALIS PACIFICUS**^a (BAIRD.).
Western Winter Wren. [B 273 *part*, C 50 *part*, R 65a, C 77.]

722-723 Anorthura

725 c. *C. p. grisea* Brewst.
Worthington's Marsh, Wren.

725 c. (?) *C. p. plesius* Oberholser

726. *C. f. fusca* (Barton).

727 b. *S. c. atkinsi* Scott.
Florida white-breasted Nuthatch.

730 a *Sitta pygmaea leuconucha* (Anthony)
White-naped Nuthatch.

723. **TROGLODYTES ALASCENSIS** (BAIRD).
Alaskan Wren. [B —, C 50a, R 66, C 78.]
724. **CISTOTHORUS STELLARIS** (LICHT.).
Short-billed Marsh Wren. [B 269, C 52, R 68, C 81.]
725. **CISTOTHORUS PALUSTRIS** (WILS.).
Long-billed Marsh Wren. [B 268, C 51, R 67, C 79, 80.]
- 725a. **CISTOTHORUS PALUSTRIS PALUDICOLA** BAIRD.
Tule Wren. [B 268 part, C 51 part, R 67a, C 80.]
- 725c. **CISTOTHORUS MARIANÆ** SCOTT.
Marian's Marsh Wren. [B —, C —, R —, C —.]
726. **CERTHIA FAMILIARIS AMERICANA** (BONAP.).
Brown Creeper. [B 275 part, C 42 part, R 55 part, C 62 part.]
- 726a. **CERTHIA FAMILIARIS MEXICANA** (GLOG.).
Mexican Creeper. [B 276, C —, R 52a, C —.]
- 726b. **CERTHIA FAMILIARIS MONTANA** RIDGW.
Rocky Mountain Creeper. [B 275 part, C 42 part,
R 55 part, C 62 part.]
- 726c. **CERTHIA FAMILIARIS OCCIDENTALIS** RIDGW.
California Creeper. [B 275 part, C 42 part,
R 55 part, C 62 part.]
727. **SITTA CAROLINENSIS** LATH.
White-breasted Nuthatch. [B 277, C 38, R 51, C 57.]
- 727a. **SITTA CAROLINENSIS ACULEATA** (CASS.).
Slender-billed Nuthatch. [B 278, C 38a, R 51a, C 58.]
- 727b. **SITTA CANADENSIS** LINN.
Red-breasted Nuthatch. [B 279, C 39, R 52, C 59.]
729. **SITTA PUSILLA** LATH.
Brown-headed Nuthatch. [B 280, C 40, R 53, C 60.]
730. **SITTA PYGMÆA** VIC.
Pygmy Nuthatch. [B 281, C 41, R 54, C 61.]
- 730a. **PARUS BICOLOR** (LINN.).
Tufted Titmouse. [B 285, C 27, R 36, C 40.]
- 731a. **PARUS BICOLOR TEXENSIS** SEBEN.
Texan Tufted Titmouse. [B —, C —, R —, C —.]

737 see ante VIII - pp 90.
737. *P. sclateri* Kleins

740 f. *P. h. columbianus* Rhoads.
Columbian Chickadee.

732. **PARUS ATRICRISTATUS** CASS.
Black-crested Titmouse. [B 286, C 29, R 37, C 42.]
733. **PARUS INORNATUS** GAMB.
Plain Titmouse. [B 287 *part*, C 28 *part*, R 38 *part*, C 41 *part*.]
- 733a. **PARUS INORNATUS GRISEUS** RIDGW.
Gray Titmouse. [B 287 *part*, C 28 *part*, R 38 *part*, C 41 *part*.]
- 733b. **PARUS INORNATUS CINERACEUS** RIDGW.
Ashy Titmouse. [B —, C —, R —, C —.]
734. **PARUS WOLLWEBERI** (BONAP.).
Bridled Titmouse. [B 288, C 30, R 39, C 43.]
735. **PARUS ATRICAPILLUS** (LINN.).
Chickadee. [B 290, C 31, R 41, C 44.]
- 735a. **PARUS ATRICAPILLUS SEPTENTRIONALIS** (HARRIS).
Long-tailed Chickadee. [B 289, 289a, C 31a, R 41a, C 45.]
- 735b. **PARUS ATRICAPILLUS OCCIDENTALIS** (BAIRD).
Oregon Chickadee. [B 291, C 31c, R 41b, C 46.]
736. **PARUS CAROLINENSIS** AUD.
Carolina Chickadee. [B 293, C 31b, R 42, C 47.]
- 736a. **PARUS CAROLINENSIS AGILIS** SENN.
Plumbeous Chickadee. [B —, C —, R —, C —.]
- 737 [~~737~~] **PARUS MERIDIONALIS** ~~SCH.~~
Mexican Chickadee. [R 292, C —, R 43, C 879.]
738. **PARUS GAMBELI** RIDGW.
Mountain Chickadee. [B 294, C 32, R 40, C 48.]
739. **PARUS CINCTUS OBTECTUS** (CAB.).
Siberian Chickadee. [B —, C —, R 44, C 52.]
740. **PARUS HUDSONICUS** FORST.
Hudsonian Chickadee. [B 296, C 33, R 45, C 49.]
- 740a. **PARUS HUDSONICUS STONEYI** RIDGW.
740b. Kowak Chickadee. [B —, C —, R —, C —.]
741. **PARUS RUFESCENS** TOWNS.
Chestnut-backed Chickadee. [B 295 *part*, C 34 *part*,
R 46, C 50.]

74ba. *A. f. lamprocephalus* Oberholser.

75i a *Polioptila carulea obscura* (Ridgw)
Western Gnatcatcher

- 741a. **PARUS RUFESCENS NEGLECTUS** RIDGW.
 Californian Chickadee. [B 295 *part*, C 34 *part*, R 46a, C 51.]
742. **CHAMÆA FASCIATA** GAMB.
 Wren-Tit. [B 274 *part*, C 26 *part*, R 35 *part*, C 39 *part*.]
- 742a. **CHAMÆA FASCIATA HENSHAWI** RIDGW.
 Pallid Wren-Tit. [B 274 *part*, C 26 *part*, R 35 *part*, C 39 *part*.]
743. **PSALTRIPARUS MINIMUS** (TOWNS.).
 Bush-Tit. [B 298 *part*, C 35 *part*, R 47 *part*, C 53 *part*.]
- 743a. **PSALTRIPARUS MINIMUS CALIFORNICUS** RIDGW.
 Californian Bush-Tit. [B 298 *part*, C 35 *part*,
 R 47 *part*, C 53 *part*.]
- 743b. **PSALTRIPARUS MINIMUS GRINDÆ** (BELDING).
 Grinda's Bush-Tit. [B —, C —, R —, C —.]
744. **PSALTRIPARUS PLUMBEUS** BAIRD.
 Lead-colored Bush-Tit. [B 299, C 36, R 48, C 54.]
- 744.1 **PSALTRIPARUS SANTARITÆ** RIDGW.
 Santa Rita Bush-Tit. [B —, C —, R —, C —.]
745. **PSALTRIPARUS LLOYDI** SENN.
 Lloyd's Bush-Tit. [B 297, C —, R 49, C 55.]
746. **AURIPARUS FLAVICEPS** (SUND.).
 746a Verdin. [B 300, C 37, R 50, C 56.]
747. **PHYLLOPSEUSTES BOREALIS** (BLAS.).
 Kennicott's Willow Warbler. [B —, C 20, R 34, C 32.]
748. **REGULUS SATRAPA** LICHT.
 Golden-crowned Kinglet. [B 162 *part*, C 22 *part*, R 33, C 34.]
- 748a. **REGULUS SATRAPA OLIVACEUS** BAIRD.
 Western Golden-crowned Kinglet. [B 162 *part*, C 22 *part*,
 R 33a, C 35.]
749. **REGULUS CALENDULA** (LINN.).
 Ruby-crowned Kinglet. [B 161, C 21, R 30, C 33.]
750. **REGULUS OBSCURUS** RIDGW.
 Dusky Kinglet. [B —, C —, R 31, C —.]
751. **POLIOPTILA CÆRULEA** (LINN.).
 Blue-gray Gnatcatcher. [B 282, C 23, R 27, C 36.]

755-759 t *Hylocichla*

758 b. *H. u. oedica* Oberh.

752. **POLIOPTILA PLUMBEA** BAIRD.
Plumbeous Gnatcatcher. [B 283, C 25, R 28, C 38.]
753. **POLIOPTILA CALIFORNICA** BREWST.
Black-tailed Gnatcatcher. [B 284, C 24, R 29, C 37.]
754. **MYADESTES TOWNSENDII** (AUD.).
Townsend's Solitaire. [B 235, C 121, R 25, C 169.]
755. **TURDUS MUSTELINUS**^a (GMEL.).
Wood Thrush. [B 148, C 3, R 1, C 6.]
756. **TURDUS FUSCESCENS** (STEPH.).
Wilson's Thrush. [B 151, C 6, R 2, C 7.]
- 756a. **TURDUS FUSCESCENS SALICICOLUS**^a (RIDGW.).
Willow Thrush. [B —, C —, R —, C —.]
757. **TURDUS ALICLÆ** (BAIRD).
Gray-checked Thrush. [B 154, C 5a, R 3, C 12.]
- 757a. **TURDUS ALICLÆ BICKNELLI** (RIDGW.).
Bicknell's Thrush. [B 154 part, C 5a part, R 3 part, C 12 part.]
758. **TURDUS USTULATUS**^a (NUTT.).
Russet-backed Thrush. [B 152, C 5b, R 4, C 11.]
- 758a. **TURDUS USTULATUS SWAINSONII** (CAB.).
758a. Olive-backed Thrush. [B 153, C 5, R 4a, C 13.]
759. **TURDUS AONALASCHKÆ** (GMEL.).
Dwarf Hermit Thrush. [B 150, C 4b, R 5, C 8.]
- 759a. **TURDUS AONALASCHKÆ AUDUBONI** (BAIRD).
Audubon's Hermit Thrush. [B 149a, C 4a, R 5a, C 9.]
- 759b. **TURDUS AONALASCHKÆ PALLASII** (CAB.).
Hermit Thrush. [B 149, C 4, R 5b, C 10.]
- [760.] **TURDUS ILIACUS** LINN.
Red-winged Thrush. [B —, C —, R 6, C 4.]
761. **MERULA MIGRATORIA** (LINN.).
American Robin. [B 155 part, C 1 part, R 7, C 1.]
- 761a. **MERULA MIGRATORIA PROPINQUA** RIDGW.
Western Robin. [B 155 part, C 1 part, R 7a, C 2.]

THE UNIVERSITY OF CHICAGO

PHILOSOPHY DEPARTMENT

PHILOSOPHY 101

LECTURE NOTES

BY [Name]

DATE

CHAPTER 1

INTRODUCTION

1.1 THE PHILOSOPHY DEPARTMENT

1.2 THE UNIVERSITY OF CHICAGO

1.3 THE PHILOSOPHY DEPARTMENT

1.4 THE UNIVERSITY OF CHICAGO

1.5 THE PHILOSOPHY DEPARTMENT

1.6 THE UNIVERSITY OF CHICAGO

1.7 THE PHILOSOPHY DEPARTMENT

1.8 THE UNIVERSITY OF CHICAGO

762. **MERULA CONFINIS** (BAIRD).
St. Lucas Robin. [B —, C 1a, R 8, C 3.]
763. **HESPEROCICHLA NÆVIA** (GMEL.).
Varied Thrush. [B 156, C 2, R 9, C 5.]
- [764.] **CYANECULA SUECICA** (LINN.).
Red-spotted Bluethroat. [B —, C —, R 20, C 31.]
765. **SAXICOLA OENANTHE** (LINN.).
Wheatear. [B 157, C 15, R 21, C 26.]
766. **SIALIA SIALIS** (LINN.).
Bluebird. [B 158, C 16, R 22, C 27.]
- 766a. **SIALIA SIALIS AZUREA** (BAIRD).
Azure Bluebird. [B —, C —, R —, C —.]
767. **SIALIA MEXICANA** SWAINS.
Western Bluebird. [B 159, C 17, R 23, C 28.]
768. **SIALIA ARCTICA** (SWAINS.).
Mountain Bluebird. [B 160, C 18, R 24, C 29.]

4 *Creagrus furcata* (neb). See Auk VIII - pp 88

11.1 *Numenius arquatus* (Linn)
European Curlew.

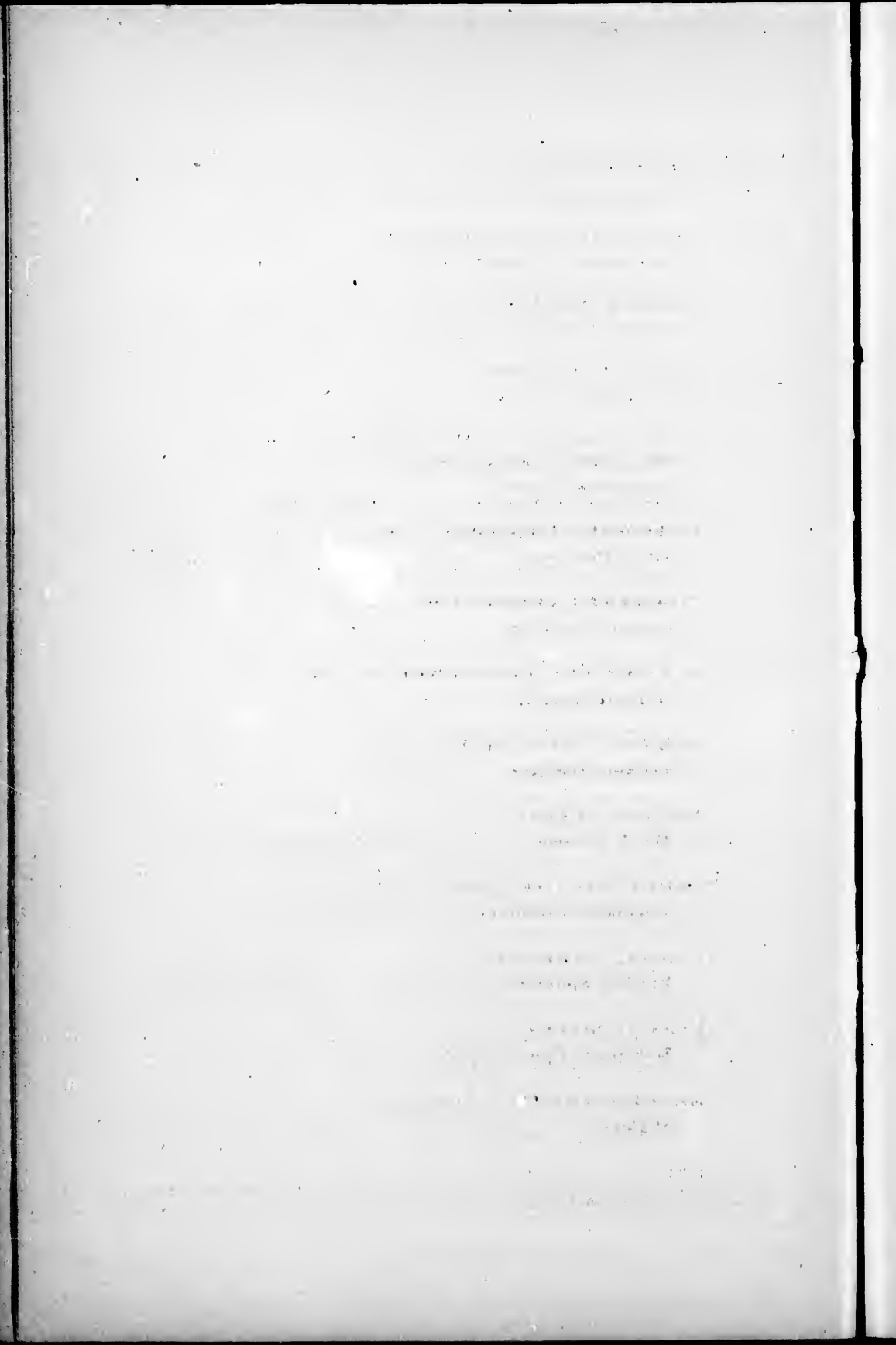
HYPOTHETICAL LIST.¹

1. **ÆCHMOPHORUS CLARKII** (LAWR.).
Clark's Grebe. [B 705, C 608a, R 730, C 846.]
2. **CEPPHUS MOTZFELDI** (BENICK.).
Black-winged Gull. [B —, C —, R —, C —.]
3. **CEPPHUS CARBO** PALL.
Sooty Guillemot. [B 728, C 633, R 762, C 873.]
4. ~~XEMA~~ **(CREAGRUS) FURCATA** (NEB.).
Swallow-tailed Gull. [B 679, C 559, R 678, C 791.]
5. **DIOMEDEA EXULANS** (LINN.).
Wandering Albatross. [B —, C —, R —, C —.]
6. **PUFFINUS KUHLLII** (BOIE).
Cinereous Shearwater. [B 651, C 596, R 708, C 831.]
7. **OCEANODROMA HORNBYI** (GRAY).
Hornby's Petrel. [B 641, C 592, R 727, C 827.]
8. **PHALACROCORAX PERSPICILLATUS** PALL.
Pallas's Cormorant. [B 621, C 533, R 648, C 756.]
9. **ARDEA WUERDEMANNI** BAIRD.
Wurdemann's Heron. [B 488, C 450, R 486 *part*, C 656 *part*.]
10. **ARDEA (DICHROMANASSA) PEALEI** BONAP.
Peale's Egret. [B 482, C 355 *part*, R 491 *part*, C 661 *part*.]
11. **TRINGA (ACTODROMAS) COOPERI** (BAIRD).
Cooper's Sandpiper. [B 527, C 422, R 535, C 618.]

¹ Consisting of species which have been recorded as North American, but whose status as North American birds is doubtful, either from lack of positive evidence of their occurrence within the prescribed limits of the present Check-List, or from absence of satisfactory proof of their validity as species.

x Eliminated - see ark VII page 64.

12. **GYPAGUS PAPA** (LINN.).
King Vulture. [B —, C —, R —, C —.]
13. **CATHARTES BURROVIANUS** (CASS.).
Burrough's Turkey Vulture. [B 4, C —, R '—, C —.]
14. **BUTEO COOPERI** CASS.
Cooper's Henhawk. [B 29, C 349, R 437, C 514.]
- x 15. **BUTEO FULIGINOSUS** SCL.
Little Black Hawk. [B —, C —, R —, C —.]
16. **RHYNCHOPSITTA PACHYRHYNCHA** (SWAINS.).
Thick-billed Parrot. [B 64, C —, R 391, C —.]
17. **CHORDEILES VIRGINIANUS SENNETTI** (COUES).
Sennett's Nighthawk. [B 115 *part*, C 267a *part*,
R 367a *part*, C 400 *part*.]
18. **ACANTHIS BREWSTERII** (RIDGW.).
Brewster's Linnet. [B —, C 147, R 180, C 211.]
19. **SPIZA TOWNSENDII** (AUD.).
Townsend's Bunting. [B 379, C 192, R 255, C 288.]
20. **HYLOPHILUS DECURTATUS** (BONAP.).
Short-winged Hylophilus. [B —, C —, R —, C —.]
21. **HELMINTHOPHILA LAWRENCEI** (HERRICK).
Lawrence's Warbler. [B —, C —, R 80, C 99.]
22. **HELMINTHOPHILA LEUCOBRONCHIALIS** (BREWST.).
Brewster's Warbler. [B —, C —, R 82, C 100.]
23. **HELMINTHOPHILA CINCINNATIENSIS** (LANGD.).
Cincinnati Warbler. [B —, C —, R —, C 101.]
24. **DENDROICA (PERISSOGLOSSA?) CARBONATA** (AUD.).
Carbonated Warbler. [B 207, C —, R 91, C —.]
25. **DENDROICA MONTANA** (WILS.).
Blue Mountain Warbler. [B 199, C —, R 112, C —.]
26. **SYLVANIA(?) MICROCEPHALA** RIDGW.
Small-headed Warbler. [B 212, C —, R 126, C —.]
27. **REGULUS CUVIERI** AUD.
Cuvier's Kinglet. [B 163, C —, R 32, C —.]



INTRODUCED SPECIES.*

PHASIANUS COLCHICUS LINN.

English Pheasant.

PHASIANUS TORQUATUS GMEL.

? Ring Pheasant.

PHASIANUS VERSICOLOR VIRILL.

Green Pheasant.

EUPLOCOMUS NYCTHEMERUS (LINN.).

Silver Pheasant.

CHRYSOLOPHUS PICTUS (LINN.).

Golden Pheasant.

TETRAO TETRIX LINN.

Black Grouse.

CARDUELIS CARDUELIS (LINN.).

European Goldfinch.

PASSER DOMESTICUS (LINN.).

English Sparrow.

PASSER MONTANUS (LINN.).

European Tree Sparrow.

? **ALAUDA ARVENSIS** LINN.

Skylark.

*This list contains only such species as have been introduced into the United States and are now known to breed in the wild state.

