

# THE COMMERCIAL

FINANCE AND INSURANCE REPORT

Subscription, \$2.00 per Annum in Advance.

Established 1882

Published Weekly.

20

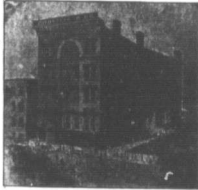
WINNIPEG, CANADA, MARCH 15, 1902

No. 28

**ANTIOBA BUILDING PAPER CO.**  
400 500  
100 100  
**JUBILEE BRAND**  
REGISTERED  
**BRICK, ANDERSON & CO.**  
INCORPORATED AGENTS WINNIPEG

## CODVILLE & CO.

Wholesale Grocers.



—Packers of—

**CELEBRATED GOLD STANDARD TEAS**  
Coffees, Baking Powder and Spices.

**BANNATYNE AVE. E., WINNIPEG.**  
Branches: BRANDON and CALGARY.

## BROMLEY & CO.



Tents  
Awning and  
Mattress  
Factory

Cor. Princess and Alexander St., Winnipeg

### HEADQUARTERS FOR THE FOLLOWING:

Pipes, Buttons, Playing Cards, Mouth  
Organs, Perfumes, Collar Buttons and  
Cuff Buttons, Rings and Gents' Chains,  
and complete stock of Smallwares.  
Wholesale only.

**J. McLEOD HOLIDAY**

173 McDermott St. Winnipeg

## Thomas Ryan & Co. Ltd.

We are carrying an immense  
stock of

### BOOTS AND SHOES

For the Spring and Summer  
trade. Our motto is good stock  
and close prices. Orders re-  
spectfully solicited.

**THOMAS RYAN & CO. Ltd.**

King and Bannatyne Sts., Winnipeg

THE EXCELLENT WEARING  
QUALITY OF

## Granby Rubbers

Have made them the most  
popular Rubbers in Canada to-  
day.

Our travellers are on the  
road with samples for Fall,  
1902.

## THE AMES HOLDEN CO. Ltd.

BOOTS AND SHOES,  
GRANBY RUBBERS.  
WINNIPEG.

F  
R  
U  
I  
T  
S



P  
R  
O  
D  
U  
C  
E

## Men's Furnishings

THIS DEPARTMENT occupies the  
greater part of the Fourth Floor, and  
is fully stocked with everything in the  
Furnishing Line.

### Club Sweaters

For Men and Boys, from \$7.00 to \$15.  
Boy's Sweaters are very popular and  
sell rapidly. Prices from \$4.80 up.

Try a couple Dozen and see how  
they'll go.

### Regatta Shirts

In all the latest Spring and Summer  
Styles and Patterns.

### Top Shirts

Our already famous



Brand of Shirts is meeting with ex-  
ceptional success. They are made in  
our own Factory from selected mater-  
ials, and are well made and well fash-  
ioned in every particular.

We carry a full range in all sizes in  
Flannel, Silk Stripes, Ceylon Flan-  
nel, Shirtings, Galateas, Denims (Blue  
Black and Grey), Stripes and Spot  
Drill, Moleskins, Black and Stripe  
Sateens, White Duck, and Cream  
Honeycomb.

You will do yourself and us a favor  
if you see and inquire about them.

## R. J. Whitla & Co.

LIMITED

IMPORTERS AND MANUFACTURERS

WINNIPEG.

### BAGS FOR BLUESTONE

Our EXTRA HEAVY FIBRE BAGS  
are just the thing for this and sugar.  
All sizes from 1 to 25 lbs. Nail Boxes,  
2, 5, 7 and 10 lbs. K. BAGS,  
light and heavy, all sizes. HAT, SHIRT  
and MILLINERY BAGS.

## McALLISTER & WATTS

43 Rorer St., Winnipeg.

East of Post Office.



Cor. Portage Ave. and Fort St.

### PREPARE

For the active duties of a business life  
by taking a course at the Winnipeg  
Business College. Annual catalogue sent  
free to any address.

G. W. DONALD, Secretary.

## The Gault Bros. Co. Ltd.

IMPORTERS AND  
MANUFACTURERS

WINNIPEG

## UDSON'S BAY CO'Y



TENTS, FLAGS AND  
ROLLER AWNINGS

THE EMERSON-HAGUE  
MANUFACTURING CO. Ltd.  
WINNIPEG.

# BUTTER



**W**E WANT every pound of Fresh Dairy Butter that Manitoba can produce from now on. We will allow the highest price (quality considered) that can be made by any Wholesale Commission House in the trade here. We have a big daily consumption to supply in filling orders for customers in this city, and also lumber and railway construction camps north, south, east and west of this big centre. We also have a special advantage over all other commission houses, by having a large demand for our own well-known meats; and customers at country points give us the preference, owing to the fact of our being able to fill complete orders for Butter, Cheese, Eggs and Meats. We can sell your consignments promptly, as we give this department special attention.

**J. Y. GRIFFIN & CO.** WHOLESALE COMMISSION MERCHANTS AND PORK PACKERS  
WINNIPEG

## EGGS CANNOT BE MOVED

At existing prices. Jobbers are to-day offering them at 13c to 14c, but at these figures they are not wanted other than in a small way. Would advise our shippers not to pay more than 10c for them, country points.

## Neither Can Fresh Made Butter

For there is, comparatively speaking none to move. We are making sales for shippers' account at from 18c to 21c. When you have a box to spare mark it up to

**R. A. ROGERS & COMPANY Ltd.**  
WINNIPEG

March 13, 1902.

## PUTTY

We find that as Manitoba Lined Oil is unequalled for Mixed Paints, it is also unequalled for making Putty. We are now turning out the finest grade. Much better than any we have been able to buy. It is put up in Bladders, in 25-lb Tins, and in bulk, (for Sash Factories). Our price may be slightly higher than the common article, but we are sure that when once handled the dealers and consumers will be unwilling to take any other.

**G. F. STEPHENS & CO.**  
Limited.

WINNIPEG

### C. P. R. Lands.

The Canadian Pacific Railway land department have announced an advance in the price of farm land of \$1 per acre. This advance affects the lands in eastern Assiniboia mainly. The price is now \$5 for the best land in this district. There has been considerable speculative buying of these lands, and it has been the policy of the department to discourage land speculation as much as possible. It is the object of the advance to discourage speculative buying of lands and retain them for the actual settlers who are also allowed liberal conditions as to terms of payment, etc.

### New Industry for Winnipeg.

W. G. Douglas, flour and feed merchant, Winnipeg, is establishing a new industry in the city, which promises to become an item of considerable importance. He is putting in plans for preparing stock foods. Mr. Douglas erected a large warehouse last year on Princess street for his business, and one floor in this building will be used for the new industry. A very large trade in stock foods is now done in the West. Mr. Douglas has been handling one line of these foods, and therefore already has a trade worked up in them. At present these foods are imported, and as they are subject to a duty of 30 per cent, it is believed that a superior article can be put up at home to the advantage of the consumer. Besides this, the advantage of having the food prepared here will mean considerable work for tradesmen in the city in other lines, such as printing the labels, making boxes, etc. Mr. Douglas has submitted his formula to several Dominion and provincial veterinarians, and he has testimonials for them that his stock foods are the best that can be made. The manufacture of these foods requires some expensive machinery for grinding and mixing the drugs.

Opposition to the wax paper trust of the United States which now practically controls a business of about \$10,000,000 a year, is to be organized in a new company in which Canadian capitalists are interested.

Alfred Booth, founder of the great fish packing business which bears his name, died in Chicago last week. He was 74 years old. From a beginning in which he employed two hands his business grew until at his death the number of employees had grown to 15,000. He was in business 32 years.

The Dominion board of trade which has just been revived at Ottawa, has elected the following officers: President, J. P. Coates, Ottawa; vice-president, Nova Scotia, Sir Sanford Fleming, representing North Sydney; New Brunswick, Geo. Robertson, St. John; N. B., Quebec, Mr. William Threlkover; Ontario, G. Barker, Hamilton; British Columbia, Thos. Earle; M. P. Council, R. W. Elliot, Toronto; N. B., Orillia; A. Foster, Pembroke; Archibald McKeen, Windsor; Thos. MacFarlane, Ottawa; J. D. Flavell, London; D. F. Bruce, M. P. Hamilton, honorary secretary, Geo. A. Chapman, Toronto.

Application has been made for a charter for the Northwest Colonization Company, with a capital of \$2,000,000. The applicants are O. A. Robinson, F. B. Lynch and J. C. Wood, of St. Paul; E. Kenaston, of Minneapolis; and F. G. Barrows, ofergus Falls. Miss F. Stanley Hough, of the firm of Hough & Campbell, of this city, who acts as secretary for the corporation, in an interview said that the applicants for the charter are officers of the Minnesota Land and Colonization Company of St. Paul, Minn., a very strong corporation which has done a very large and successful business. The parties have secured a tract of about a million acres of land in Canada from the Canadian Pacific Railway Company and the Canadian Northwest Land Company, embracing some of the best wheat lands in the Northwest, in the Alameda, Arcola, Estevan and adjacent sections in Southwestern Assiniboia. It is the object of the company to immediately put the land on the market and sell at attractive prices to investors and settlers.

## The W. H. Malkin Co.

LIMITED.  
Importers and  
Wholesale Grocers

Packers of the Celebrated  
VICTORIA CROSS Evaporated  
Fruits, Teas and Coffees.

HEADQUARTERS for Sago, Tapioca,  
Rice and all classes of English  
Groceries.

Prompt attention to all letter orders.

137 Water St., - VANCOUVER, B.C.

# THE COMMERCIAL

The recognized authority on all matters pertaining to trade and progress in Western Canada, including that part of Ontario west of Lake Superior, the province of Manitoba and the Territories.

Twentieth Year of Publication.

ISSUED EVERY SATURDAY.

Subscriptions—Canada and the United States, 50¢ per annum in advance; if not paid, other countries \$2.00 in advance.

Changes for advertisements or stops should be made in not later than Thursday morning. Advertisements purporting to be news matter, or which profess to express the opinion of this journal, will not be inserted.

The Commercial certainly enjoys a very much larger circulation among the business community of the vast region lying between Lake Superior and the Pacific coast, than any other paper in Canada, daily or weekly. The Commercial reaches the leading business communities, manufacturing and financial houses of Eastern Canada.

Office: 219 McDermott St. Telephone 234.  
D. W. BUCHANAN,  
Publisher.

WINNIPEG, MARCH 15, 1902.

## THE GRAIN SITUATION.

At Ottawa, on Monday, there was a long discussion in Parliament on the grain situation in the West. Almost every western member took part in the discussion. It was stated during the debate that Hon. Mr. Sifton intended proposing some amendments to the grain act, but the nature of these amendments was not disclosed. Some of the western members declared that there was an agreement of understanding among elevator operators to depress prices, and some extravagant estimates were given as to the losses of farmers resulting from this alleged combination, together with the losses occasioned by the lack of elevator and transportation facilities. While there has certainly been some losses on account of the blockade, it is absurd to talk about sums away up in the millions of dollars. It is also quite evident that some of the indications which are taken to point to a combination of the elevator men, are simply results of the grain blockade. The lack of storage and transportation facilities made it necessary that the grain dealers should have a larger margin than under ordinary circumstances. Another feature dwelt upon was the fact that buyers sometimes refused to take No. 1 hard, except at the price of No. 1 northern. This was a result of lack of storage space. If the only space available in an elevator was in a No. 1 northern bin, the buyer would have to lose the difference between the grades if he paid the market value for 1 hard to throw in with the 1 northern. Grainmen are probably not any better or any worse than other business men, and it is possible that some buyers may have taken advantage of the congested state of the markets to profit by little tricks of this nature. The refusal to pay for No. 1 hard when it would be a loss of grade to the buyer, however, is a legitimate business proposition.

Another feature of the debate in Parliament which seems somewhat contradictory and peculiar, was the position taken by the speakers in regard to the warehouses and supplying cars to farmers. The burden of most of the speeches was the lack of transportation facilities. Not much was said about the lack of elevator facilities, which is quite as important as

the former. These same speakers, who spoke so heatedly about the lack of transportation facilities, also demanded freedom in the erection of flat warehouses. They also demanded that the railway companies be compelled to supply cars to farmers for loading direct from wagons, and that farmers be allowed a longer time to load cars. These things are inconsistent with the rapid transportation of grain. If flat warehouses were placed on the same footing as elevators, and farmers were encouraged to load cars from wagons, we would have a first class grain blockade every year. In fact the grain could not be handled on this basis at all.

It is not likely that we will soon have a repetition of the conditions which have existed in the grain trade this season. There is sure to be a large increase in the elevator capacity before another crop is marketed, unless legislation inimical to the elevator interests is enacted. Legislation which would stop the erection of elevators would be a calamity. The railway companies will also profit by the experience of this season, and they will be better prepared in the

rights within such city or municipality, and grant the necessary consent thereto and the decision of the lieutenant-governor-in-council in any such case shall be final and binding on all parties.

The effect of this clause would be to give the government authority to override the rights of the municipalities. The Free Press says the private bills' committee distinctly repudiated this clause, but after the bills were printed and passed, it was found that the clause still remained. The government paper denies the charge. Without wasting time over the controversy as to how the clause came to be incorporated in the bills, it is not difficult to conclude that the principle involved is wrong. It is not likely, however, that any government would undertake to override the rights of the municipalities on the strength of these bills. Governments sometimes do some very arbitrary things, however, even in Manitoba.

## Faced Apples.

A fruit shipper at Brighton, Ont., has been fined for shipping "faced" apples to Manitoba. It is satisfactory



Manitoba Farm Homes—Residence of Geo. C. Mannix, Near Stonewall.

future. With improved transportation facilities and increased elevator space, the difficulties which have been encountered this year need not be repeated. It is possible to do positive injury by unwise legislation, such as has been demanded by some heated orators who know little or nothing about the grain trade. The unsatisfactory conditions which have prevailed in the grain trade have resulted from an enormous increase in production in a single year. These unfavorable features will be remedied in the ordinary course of events. More harm than good might result from hasty legislation based on the exceptional conditions prevailing in the western grain trade during the past season.

## A BAD PRINCIPLE.

Winnipeg party papers are having a controversy over a clause which the Free Press alleges was smuggled into several bills incorporating electric railways, passed at the recent session of the Manitoba legislature. The clause reads:

"In the event of the company and any city or municipality failing to agree as to the terms upon which the company shall be allowed to exercise any of the franchises or rights hereby conferred there shall be an appeal to the lieutenant-governor-in-council who shall have the right to determine any dispute and fix the condition upon which the company may exercise such

rights to know that action is at last to be taken to stop the fraud perpetrated by apple shippers in the east. The tops of the barrels are faced with good apples, while the centres are filled with rubbish. Shippers received here last fall were, if anything, worse than usual, despite the passing of the act by Parliament regarding fraudulent packing of apples. It is presumed here that the act was enforced on export shipments as Europe, while the culls were faced with good fruit and shipped west. This imposition on the West has long been practiced by Ontario shippers, and it is high time it was stopped.

The department of public works, Ottawa, has issued its annual report a series of maps showing the railway lines of the various provinces of Canada and also the annual systems.

The Dominion customs authorities have received particulars of a shipment made by the Hudson's Bay Company to Moose Factory and York Factory, on the Hudson Bay, last year, in consequence of which the Dominion is some \$12,000 poorer. The company every season imports some goods to the bay direct from the old country, but the distance from the centre of civilization makes it many months before any particulars reach Winnipeg, which is the terminal port of entry. In addition to the consignments entered by the Hudson's Bay Company, the various missionaries working in the north received goods on which between \$4,000 and \$5,000 will be paid in duty. These shipments were the first duty to be made in the company's new vessel, the late H.M.S. Pelican, purchased from the Imperial government.

## FINANCIAL

WINNIPEG BANK CLEARINGS.  
Returns for the Winnipeg Clearing House for the week ending Thursday, show as follows:

Week ending March 12, 1902	\$	1901
Corresponding week, 1901	2,268,224	
Corresponding week, 1900	1,586,074	
The monthly totals are as follows:		
1901	1900	1899
Jan.	\$ 8,622,456.92	9,967,619.92
Feb.	7,138,276	6,792,646
Mar.	7,832,244	7,246,121
Apr.	7,834,254	7,091,519
May	8,814,074	7,622,750
June	8,547,048	8,172,084
July	9,213,196	9,305,429
Aug.	10,784,765	11,733,000
Sep.	10,314,335	7,320,147
Oct.	11,744,862	9,183,000
Nov.	11,832,461	10,618,985
Dec.	14,135,320	10,869,520
Total	\$127,771,158	\$106,950,729

## Financial Notes.

Out of a tax levy of \$15,000 for this year in Dawson City the rate-payers have already paid in \$138,000, leaving but \$7,000 unpaid; \$2,000 was paid during the previous year. The rate is \$1,000,000 and the rate one and one-quarter cents.

The Canada Northwest Land Company's share experienced an unusual advance in eastern stock markets last week, the gain being 18 1/4 points one way. The reason for this advance is the declaration of a two per cent. dividend on the preferred stock, the first the company has paid for years.

## Fire and Fraud.

At the assize court Winnipeg on Thursday, Justice Richards sentenced S. G. G. and his wife, who had been tried before his lordship at the last assizes and found guilty of unlawfully removing and concealing a quantity of goods from their house. Evidence for the purpose of obtaining insurance upon the goods if they had been destroyed by fire. The goods were insured in the Hartford Insurance Company, which was burnt effectually to collect the amount of the policy effected on the goods in question as if they had been burned also, though they had been previously fraudulently removed and concealed. His lordship sentenced Samuel G. Hurst to two years in the Manitoba penitentiary, and Sam C. Hart to eight months in the jail at Portage la Prairie.

## Tenders.

Tenders addressed to the chairman of the committee on works, Winnipeg, for the construction of a sewer in Balmoral street, from Portage avenue to Ellice avenue, will be received at the office of the city clerk up to 8.30 p.m. on Thursday, March 20.

Tenders, marked "School Building Tenders," will be received by D. L. Livingstone, Deloraine Man, up to six o'clock p.m. on Saturday, the 22nd instant, for the erection at Deloraine of a six-roomed brick school building, with 100 seats, for the trustees of the school district of Deloraine.

Tenders addressed to the Department of Lands, Ottawa, and endorsed "Tenders for Iron Supplies," will be received up to noon on Monday, 14th April, 1902, for the delivery of iron supplies during the fiscal year ending 30th June, 1903, at the various points in Manitoba and the Northwest Territories.

Tenders, addressed to the chairman of the committee on works, Winnipeg, for the supply of sand and gravel for the city quarry and asphalt plant, will be received at the office of the undersigned up to 5 o'clock p.m. on Thursday, March 20. The quantity required will be from 500 to 500 cords, as follows: 200 to 250 cords to be delivered to the city quarry, Little Stony Mountain, and from 100 to 200 cords to the asphalt plant.

According to the latest bulletin in the census of 1901, there are in Manitoba 183,332 males and 116,615 females. Of the males, 92,744 are single, and 90,590 are married. There are 42,848 married men, and 41,837 married women, a discrepancy which may be explained by the fact that some men have left their families elsewhere. There are 2,727 widowers and 3,062 widows. The province has eighteen divorced men and seventeen divorced women.

### BANK OF MONTREAL

ESTABLISHED 1817.  
Capital all Paid-up - \$12,000,000  
Reserve Fund - 7,000,000  
Bal. Profit and Loss - 876,531.64

HEAD OFFICE, MONTREAL.  
BRANCHES: London, New York, San Francisco, etc.  
A. C. BISHOP, General Manager.

WINNIEPEG BRANCH  
Transfers of Cheques, Letters of Credit and Commercial Credits  
Interest allowed on deposits at current rates.

DOMINION BANK  
Capital Authorized \$3,000,000  
Capital Paid Up - \$2,400,000  
Reserve Fund - \$2,400,000

WINNIEPEG OFFICES:  
Main Office - Col. Ma and McDermott Streets.  
North End Branch - 709 Main Street.

UNITED BANK OF CANADA  
Capital Paid-up - \$2,000,000  
Reserve - 500,000  
HEAD OFFICE - QUEBEC

BRANCHES IN MONTREAL AND NORTH WEST TERRITORIES  
A. J. BISHOP, General Manager.

BANK OF NOVA SCOTIA  
Incorporated 1882.  
Head Office - Halifax  
Gen. Manager's Office - Toronto

Capital Paid-up - \$2,000,000  
Reserve - \$2,000,000  
A general banking business transacted.

BANK OF BRITISH NORTH AMERICA  
Incorporated by Royal Charter in 1861.  
'Paid-up Capital - \$1,000,000  
Reserve Fund - \$300,000

THE TORONTO GENERAL TRUSTS CORPORATION  
Established 1882.  
Capital - \$1,000,000  
Reserve Fund - \$270,000

THE GREAT WEST LIFE ASSURANCE CO.  
Business in Force Over Thirteen Million Dollars  
Assets Exceed One Million Dollars

Lac du Bonnet Mining Developing & Man'g Co. Ltd.  
BRICK MANUFACTURERS  
Write for prices on building brick. Office: ROOM 56 TRIBUNE BUILDING on building brick. WINNIPEG

OIL-SMELTER-MINES DIVIDEND-PAYING STOCKS  
Working on the plan of GENERAL AVERAGES, our investments are secure.

SEEDS  
We are the Merchants' Supply Seed House of Western Canada.  
GARDEN SEEDS  
Get our Prices on ONION SETTS.

THE BOLE DRUG CO.  
Wholesale Druggists, Winnipeg  
POMPEII CASTOR OIL  
The largest individual seller in the country. It is the sweetest and purest Castor Oil ever sold.

BRANDON SEED HOUSE  
A. E. McKENZIE & CO., Brandon, Manitoba.

### IMPERIAL BANK OF CANADA

Head Office, Toronto.  
Capital paid-up - \$2,500,000  
Reserve - \$1,850,000

DIRECTORS: T. R. Merritt, President  
D. R. Wilkie, Vice-President and General Manager.  
Wm. Ramsay, Elias Rogers.  
Wm. Jaffray, Wm. Hendrie, F. Sutherland Lloyd, E. Hay, Inspector.

Branches in the Northwest and British Columbia: Portage la Prairie, Brandon, Man., Revelstoke, B. C., Fernie, B. C., Kamloops, B. C., Prince Rupert, B. C., Dawson, Y.T.

WINNIEPEG BRANCH  
Savings Bank Department - Deposits received and interest allowed.

BANK OF OTTAWA  
Head Office, Ottawa.  
Capital authorized, \$2,000,000  
Capital paid up, \$1,705,000

BRICK MANUFACTURERS  
Write for prices on building brick. Office: ROOM 56 TRIBUNE BUILDING on building brick. WINNIPEG

THE BOLE DRUG CO.  
Wholesale Druggists, Winnipeg  
POMPEII CASTOR OIL  
The largest individual seller in the country. It is the sweetest and purest Castor Oil ever sold.

BRANDON SEED HOUSE  
A. E. McKENZIE & CO., Brandon, Manitoba.

THE GREAT WEST LIFE ASSURANCE CO.  
Business in Force Over Thirteen Million Dollars  
Assets Exceed One Million Dollars

Lac du Bonnet Mining Developing & Man'g Co. Ltd.  
BRICK MANUFACTURERS  
Write for prices on building brick. Office: ROOM 56 TRIBUNE BUILDING on building brick. WINNIPEG

OIL-SMELTER-MINES DIVIDEND-PAYING STOCKS  
Working on the plan of GENERAL AVERAGES, our investments are secure.

SEEDS  
We are the Merchants' Supply Seed House of Western Canada.  
GARDEN SEEDS  
Get our Prices on ONION SETTS.

THE BOLE DRUG CO.  
Wholesale Druggists, Winnipeg  
POMPEII CASTOR OIL  
The largest individual seller in the country. It is the sweetest and purest Castor Oil ever sold.

BRANDON SEED HOUSE  
A. E. McKENZIE & CO., Brandon, Manitoba.

### THE CANADIAN BANK OF COMMERCE

HEAD OFFICE, TORONTO  
Capital Paid-up - \$8,000,000  
Reserve Fund - \$2,000,000

Hon. Geo. A. Cox, President.  
B. E. Walker, General Manager.  
J. H. Plummer, Asst. General Manager.  
Winnipeg Branch: JOHN AIRD, Manager

GENERAL BANKING BUSINESS TRANSACTED.  
INTEREST ALLOWED ON DEPOSITS IN SAVINGS BANK DEPARTMENT

BANK OF BRITISH NORTH AMERICA  
Incorporated by Royal Charter in 1861.  
'Paid-up Capital - \$1,000,000  
Reserve Fund - \$300,000

THE TORONTO GENERAL TRUSTS CORPORATION  
Established 1882.  
Capital - \$1,000,000  
Reserve Fund - \$270,000

THE GREAT WEST LIFE ASSURANCE CO.  
Business in Force Over Thirteen Million Dollars  
Assets Exceed One Million Dollars

Lac du Bonnet Mining Developing & Man'g Co. Ltd.  
BRICK MANUFACTURERS  
Write for prices on building brick. Office: ROOM 56 TRIBUNE BUILDING on building brick. WINNIPEG

OIL-SMELTER-MINES DIVIDEND-PAYING STOCKS  
Working on the plan of GENERAL AVERAGES, our investments are secure.

SEEDS  
We are the Merchants' Supply Seed House of Western Canada.  
GARDEN SEEDS  
Get our Prices on ONION SETTS.

THE BOLE DRUG CO.  
Wholesale Druggists, Winnipeg  
POMPEII CASTOR OIL  
The largest individual seller in the country. It is the sweetest and purest Castor Oil ever sold.

BRANDON SEED HOUSE  
A. E. McKENZIE & CO., Brandon, Manitoba.

### BANK OF HAMILTON

Head Office, Hamilton.  
Capital (all paid up) - \$2,000,000  
Reserve Fund - \$1,500,000

Branches: Toronto, London, Niagara Falls, etc.  
A. G. WATSON, General Manager.

WINNIEPEG BRANCH: JOHN AIRD, Manager

THE TORONTO GENERAL TRUSTS CORPORATION  
Established 1882.  
Capital - \$1,000,000  
Reserve Fund - \$270,000

THE GREAT WEST LIFE ASSURANCE CO.  
Business in Force Over Thirteen Million Dollars  
Assets Exceed One Million Dollars

Lac du Bonnet Mining Developing & Man'g Co. Ltd.  
BRICK MANUFACTURERS  
Write for prices on building brick. Office: ROOM 56 TRIBUNE BUILDING on building brick. WINNIPEG

OIL-SMELTER-MINES DIVIDEND-PAYING STOCKS  
Working on the plan of GENERAL AVERAGES, our investments are secure.

SEEDS  
We are the Merchants' Supply Seed House of Western Canada.  
GARDEN SEEDS  
Get our Prices on ONION SETTS.

THE BOLE DRUG CO.  
Wholesale Druggists, Winnipeg  
POMPEII CASTOR OIL  
The largest individual seller in the country. It is the sweetest and purest Castor Oil ever sold.

BRANDON SEED HOUSE  
A. E. McKENZIE & CO., Brandon, Manitoba.





## The Choice is Yours

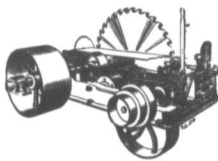
We can supply suits \$4.00 to \$14.00.  
You get all you pay for in either case.  
We do not handle the "just as good" kind.  
Ours is the best that experience, judgment and mechanical skill can produce.

### DONALD FRASER & CO.

Manufacturers of Fine Clothing

WHOLESALE

WINNIPEG—126 Princess Street.  
MONTREAL—502 St. Paul Street.

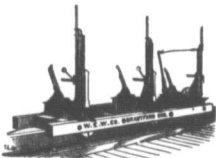


ENGINES AND BOILERS

Waterous Engine Works Co  
WINNIPEG, MAN. AND VANCOUVER, B.C.

## SAW MILL MACHINERY

Shingle Mills and Planers  
Edgers and Trimmers



## THE STUART-ARBUTHNOT MACHINERY CO., LIMITED

SUCCESSORS TO  
STUART & HARPER

. . . 764-766 Main Street, Winnipeg

HEAVY MACHINERY MERCHANTS  
ELECTRICIANS

Sole Agents for:

"Leonard's" Engines and Boilers, "Brown's" Automatic Engines, "Canton" Mining Fire and Boiler Feed Pumps, "Cameron" Steam Pumps, "Dodge" Wood Split Pulleys, "Beardmore's" Leather Belting, MacGregor, Gourlay & Co.'s Wood Working Machinery, Stratford Mill Building Co.'s system of complete Flour Mills.

LONDON Motors, Dynamoes and Elevators.  
FACEARD'S LAMPS, Transformers and Supplies.

## CLARE BROS. & CO.

Stoves and  
Furnaces

Metal Roofing and Siding  
Steel Embossed Ceiling  
Eavetrough and Conductor Pipe  
Graniteware and Tinware

## CLARE & BROCKEST

Managers.

WESTERN BRANCH, WINNIPEG, MAN.

Established 110 Years.

## Hartford

Fire Insurance  
Company of Hartford,  
Conn.

Assets:

\$12,259,076

Reinsurance  
Reserve:

\$6,798,504

W. W. SCRIMES,  
Supt., Winnipeg.

Agents wanted in unrepresented districts.

## LEITCH BROS.

Oak Lake

"Anchor  
Brand" **Flours**

FROM NO. 1 HARD WHEAT.

Bran, Shorts and all kinds of  
Chopped Feed and Grain.

ADDRESSES

OAK LAKE, MAN.

**The Brock Company**  
(Limited)

WAREHOUSES:  
TORONTO AND MONTREAL

OFFICES: WINNIPEG, VANCOUVER, QUEBEC, HALIFAX

SHOWN THIS WEEK BY OUR

TORONTO HOUSE AND REPRESENTATIVES

M 81 72-inch Bleached

# Linen Damask

5 DESIGNS

To Retail at 75c Extra Value

REPRESENTATIVES, MANITOBA, NORTHWEST TERRITORIES  
AND BRITISH COLUMBIA:

W. L. BROCK, W. T. WALTERS, G. W. PARKER,  
ANDHOWN BLOCK, WINNIPEG

A. E. MONTAGHTON  
VANCOUVER

WANTED — SEVERAL PERSONS OF character and good reputation in each county (one in this county required) to represent us in their respective counties. We are a wealthy business house of solid financial standing. Salary \$18.00 weekly, with expense additional, all payable in cash each and carriage furnished, when necessary. References. Enclose self-addressed stamped envelope. Manager, 516 Canton Building, Chicago.

## Wholesale

We supply all out of town merchants with a full line of

## Jewellery

at wholesale prices. Write for particulars.

**D. R. DINGWALL Ltd.**  
424 and 584 Main St., Winnipeg.  
Sign of the Street Clock.

## A. CARRUTHERS & CO.

Dealers and Exporters of  
**Hides, Wool, Sheepskins,  
Tallow, Seneca Root  
and Raw Furs**

Liberal advances made on shipments against Bill Lading. Wood Sacks, Hide Ropes and Tags furnished on application.

Office and Warehouse:  
120-122 King St., Winnipeg, Man.

## JAS. MCCREADY & CO. LIMITED.

WHOLESALE . . .

Boot and Shoe  
Manufacturers

W. WILLIAMS, Agent. MONTREAL, QUE.

## Grocery Trade Notes.

Quaint and rolled oats dropped 20c per bush at Toronto last week.

The world's visible supply of coffee showed the unprecedented increase of 2,000,000 bags for the month of February, and now amounts to 11,300,000 bags.

Potatoes advanced about 5c per bush at Minneapolis last week, owing to big demand and diminishing stocks. It will be remembered that the United States market for potatoes last fall, and that quite a few Manitoba potatoes were bought for that market, but nothing can be resumed this spring.

## Hardware Trade Notes.

The eastern bar iron association of the United States has advanced the price of its products \$2 per ton.

The Canadian White Lead Grinders' association has announced that at a meeting of the association on March 8 it was decided to give a rebate of 2 per cent on 1-ton lots, and 1 1/2 per cent on 5-ton lots and 10 per cent on 15-ton lots, besides an additional rebate of 2 per cent on 5 and 10-ton lots to those dealers who exclusively sell the association's white lead. On 1-ton lots the rebate is 5 per cent, on 5-ton lots and 7 1/2 per cent on 15 tons.

## Inclement Trade Notes.

A heavy fall of snow and colder weather put back the implement trade at Toronto last week, and demand for immediate delivery of spring lines slackened considerably.

The Minnesota prairie twine factory announced that it will be turning one grade of twine this year, and the price for that will be 9 1/2-10c. The output of the factory will be 6,000,000 pounds.

T. S. Wright, implements, Winnipeg, has received the vehicles manufactured by the Alexandria Carriage Works, Alexandria, Ont., this season, in addition to the lines which he formerly handled.

The Nichols-Shepard Thresher Co., Toronto, Ont., have opened their Winnipeg office at 214 James street, with J. H. McCutcheon as manager. It is an American company, doing business in the United States since 1858, but this is their first season in Canada. T. S. Wright is their local representative for the Winnipeg district.

Another factor in strengthening grain prices is the light stocks on hand says Farm Implements of Minneapolis. Practically no twine was ordered over from last season, and at least one of the concerns heretofore dependent on the twine trade is turning its attention to rope, thus eliminating from the market a large proportion of its usual output of twine. These facts, in conjunction with the growing demand for twine for use on corn harvesters, indicate a shortage rather than a surplus, and a firm crop is harvested.

## Lumber Trade Notes.

The United States has now a total area of forest reserves of 46,410,290 acres, contained in forty-one reserves. The shipping and export trade is said to be scarce. Manufacturers are reportedly already handicapped in filling orders for this season.

C. M. Beecher, of the British Columbia Mills, Timber and Trading Co., Vancouver, Winnipeg last week, returning from a tour on an eastern tour, says he is establishing a saw mill at that place.

British Columbia shingles are held short at \$2.50 delivered, and are selling nearly all points. This includes nearly all of Manitoba. Some resorts have a higher rate. The Canadian Northern Railway rate on lumber from Port William to Winnipeg is 10 cents per 100 pounds this week. The rate is now 15 cents from Port William and nine cents from Rainy River.

The spring lumber trade price list has been issued, but there are no changes in the force last year of importance. Pine dimension, 2x4 to 2x8, 12, 14 and 16 feet long, has been raised to 54c, and 2x10 to 2x12, 12, 14

and 16 feet long has been advanced \$1 per 1000 feet, and is now about a probability of higher prices.

Winnipeg offices of the Rat Portage Lumber Co. have been amalgamated under the management of John Graham. Formerly the saw and mill departments of the latter department were carried on separately, with Mr. Graham as manager of the former and J. W. B. G. Gooderham as manager of the lumber business. Mr. Graham's office will be at the lumber yard, and the saw mill department will be used as formerly for storing goods.

The demand for doors and sash work is any indication of what building operations are to be like in the Northwestern States this year there is no doubt but that these operations will be exceptionally large. The American Lumberman of Chicago in reviewing the market says: "Manufacturers and jobbers all over the north are in receipt of more inquiries and orders for doors and mill work than they have ever had to cope with before. In fact, the factory and distributing centers the estimating departments are fairly choked up with work. The demand for doors has constantly since the first of February and its close found spring demand in the north. The volume of work done in the month was highly satisfactory, showing a considerable increase over a year ago. Workmen in all localities are well satisfied that the demand will be carried through the winter, with the gain in the volume during the next few weeks."

John M. Chisholm, lately manager of the Winnipeg yard of the Rat Portage Lumber Co., has been appointed manager of the new lumber yard opened here by J. D. McArthur. Mr. Chisholm is well known in the city in lumber trade circles.

John M. Chisholm, lately manager of the Winnipeg yard of the Rat Portage Lumber Co., has been appointed manager of the new lumber yard opened here by J. D. McArthur. Mr. Chisholm is well known in the city in lumber trade circles. He has been in charge of the lumber yard having for years been manager of the Lake, Hanover and British Columbia mills. He purchased the Winnipeg property of the British Columbia Lumber Co., Ltd., Trading Co., which included the lumber yard, office and large lumber mill at Lac du Bonnet, which is now operated with lumber of every class, including pine, British Columbia lumber and mill work. Mr. Chisholm has four saw mills located as follows: One at Hurtle, one at Lac du Bonnet, one at Rainy River, one at one at Dymont, Ont., on the C. P. R., east of Hat Portage, Miller's mill at Lac du Bonnet, which is now operated with lumber of every class. Mr. McArthur controls a large area of timber lands tributary to the Lac du Bonnet line, and will supply the Winnipeg yard with spruce and tamarac lumber from these mills. Poplar is also cut at these mills. This lumber is used for making boxes, etc. Mr. McArthur will build a large barn at or near his Winnipeg yard, where he will keep his teams and contracting outfits, when they are not employed elsewhere.

## Live Stock Trade Notes.

Arthur Mackenzie, a prominent cattle buyer of the Calgary district, passed through the Winnipeg market this way east to look up young stock.

The ranchers of the Northwest Territory report that their cattle have come through the winter in splendid shape, and they have hardly had to be fed at all. An effort is to be made to improve the quality of the stock by liberal importations of pure bred animals.

A report from Rosser, says: Stock of all kinds are looking good and to judge by their caperings are in better condition than last year. Cattle and milch cows are all in good demand at high prices, competition being keen. The Langley and Lingling have disposed of a large number of well bred stockers for \$14 a head.

The Imperial authorities have definitely informed the Canadian government that its request for the removal of the embargo upon Canadian cattle landings in the British Isles cannot be considered. The present arrangement whereby the cattle are allowed to be landed in the United States is the best that they can offer this country. It is pointed out in the report that the United States has the advantage, which is at present enjoyed by Canada and the United States only.

The prohibition on cattle imports is an act of the Imperial House of Commons and the authorities of the state that they have no power to modify it even if they would.

## Dairy Trade Notes.

The Posen, Man., creamery directors are pushing the work of their creamery with great haste. The machinery has all arrived.

## MINING

## War Eagle Annual Meeting.

The report presented at the annual meeting of the War Eagle Consolidated Mining & Development Co. held last week, shows an unprofitable year for the company, says the Toronto Globe. There were about 25 shareholders present. The chair was taken by Mr. T. G. Blackstock, vice-president, in the absence of Mr. George Gooderham, president.

The expenses of operating the properties of the company amounted to \$480,987.72, while the proceeds from ore sales were \$187,738.93, and from transfer fees, \$118,255, a total of \$187,873.18. The expenses of the \$242,730.54, which has been deficit forward to profit and loss account.

The liabilities of the company now stand as follows: Capital stock paid up, \$1,700,000; Bank of Toronto, Rossland, \$256,110.77; George Gooderham, \$385,347.37; accounts payable, \$716.50; total, \$2,401,255.

At the meeting the shareholders authorized the company to give to Mr. Gooderham a mortgage for \$625,000 on the indebtedness. The directors were also authorized to borrow \$200,000 to carry on development on a large scale.

Mr. T. G. Blackstock, in his remarks, referred to the probability of the company being able to treat low grade ores at a lower cost than the company are now only smelting the ore; in the future they hope to be able to concentrate and mill them. The ore shipments for the year amount to 19,864 tons, averaging \$15.64 per ton. The average assay of the average contents were 633 ounces gold, 1.08 ounces silver and 2.1 per cent of copper.

The ore reserves now on hand in the mine are estimated at about 25,000 tons of about \$14 smelter's gross value (valuing copper at 20c, and the price of 16.25 cents, which it has been selling for).

The work of the mine progressed without interruption up to July 12, 1906, when a strike of the miners struck. The mining of the year was therefore limited to about seven months. During this period of work the contract system and with the completed equipment, the costs of work were reduced to a much lower level, which has hitherto been reached in this district. Excluding the storage ore sold, and taking into account the development, a total of \$7.33 per ton of ore mined. The small tonnage of 19,864 tons of material, in comparison with the development work necessary, has made the development cost per ton very high.

Hon. Geo. A. Cox retired from the board of directors, and his place was vacated by Mr. G. Gooderham, vice-president. Mr. G. Gooderham, Toronto, president; Mr. G. Gooderham, Toronto, vice-president; Mr. G. Gooderham, Toronto, Charles R. Mosser of Montreal, W. H. Beatty of Toronto, A. E. Gooderham of Toronto, and George T. Blackstock of Toronto.

## BRITISH COLUMBIA.

The British Columbia Copper Company's smelter at Greenwood was temporarily closed down last week for want of coke.

It is reported from Vancouver that tin has been found on Bunker Creek in that province. The tin is regarded as being important.

The weekly tonnage of the Granby smelter shows an increase of about three furnaces went into operation. For the week ending Saturday last the

plant treated 7,649 tons of ore, an average of 1,003 tons daily. The total tonnage treated to date is 353,256.

The third furnace of the Granby smelter at Grand Forks was blown in last week. This will increase the capacity of the works to 1,145 tons daily, and a fourth furnace will be started as soon as a new pump is installed. The smelter, now being operated to its full capacity.

The shareholders of the Deer Trail mine, in their annual meeting in Toronto, considered the report of the board, which was stated that there had been a profit of \$200,000 on the year's operations. J. D. Chaplin, the president, who had recently visited the property gave an encouraging report.

Ore shipments from the Rossland camp for the eight days ending last Saturday were 8,000 tons, divided as follows: Lerol, 6,000 tons; Bonanza, 2,1,250 tons; Cascade, 90 tons; Bonanza, 30 tons. The aggregate for the year is thus brought up to 55,928 tons from the Centre Star and War Eagle mines.

A case has been brought up in Woodstock, Ontario, by John Clark, a former settler of Zoro, against A. M. Gray, a manager of the same place, to recover \$2,000 damages for fraudulently representing to him that certain mineral properties owned by the Bear Creek Mining Co. of Lardau, Ont., was of very great value, which induced Clark to purchase a share at the price of \$1,000, which shares turned out to be valueless.

## NORTHWEST ONTARIO.

A smelter is to be erected this year near the town of the Victoria Mining Company, in the Tip Top Round Lake on the Canadian Northwest.

The Hermann-Larson mining properties near Dryden have been acquired by the company to be known as the Redesigner Mining and Development Company. The head office of this company is located at Windsor, Ont., and its capital stock is \$200,000.

An iron ore property at Sheet Rock lake, near Port Francis, has been purchased by a party of United States capitalists, being a party mentioned as \$200,000. It is said that the vendors have made a good profit out of this transaction.

The Royal Sovereign mine (Lower Newpaw) is to be worked again this year, as the capital has been delayed in reported that sufficient funds are now available for the purchase and the mine is to be re-opened at once.

Two mining locations on Mosher Hill, near the town of \$1,348 and 349, owned by Price Bros., have been bought by a Toronto company, called the President Gold Mining Company. Development work is being done this season. It is said that platinum is found in very small quantities on these properties.

A wire from Toronto on Monday said: The decision of the directors of the Golden Star to sell out the property to the British Columbia Copper Company's mining history. The great bulk of the money lost was subscribed by Toronto capitalists, and the loss was a half it has been hovering around three or four cents after having made three successive years. The directors have thrown it up altogether. The shareholders long ago came to the conclusion, they had been the victims of a rank swindle on the part of the States speculators who owned the mine originally. They were now hoping that the reorganization board, headed by R. C. Wood, would be able to straighten out the property, but the proposition is in good shape. This year, abandoned, though at the morning session of the board, it is said that he still had faith in the mine.

A St. Louis dispatch says that the approval of the order of the Legion of Honor there, has been found \$30,514 short in its accounts.

Twenty steamships and sailing vessels have been announced for service in Nome trade this season. These vessels have a total carrying capacity of 40,000 tons. They will furnish accommodations on the first trip, and also for over seven thousand passengers.

# He Never Sleeps

but always looking for

ORDERS for

## REINDEER BRANDS

CONDENSED . . .

Milk

Coffee and Milk  
Cocoa and Milk

EVAPORATED CREAM

## EDWARDSBURG BRAND

Starch and Syrup

RELIABLE GOODS

FOR SALE BY ALL WINNIPEG WHOLESALE GROCERS

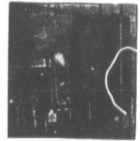
**E. NICHOLSON**

WHOLESALE AGENT  
115 Bannatyne St. East, Winnipeg



## ACETYLENE

THE 20TH CENTURY LIGHT



The Ontario Double Generator made in all sizes from ten lights up. Guaranteed to give satisfaction. Sold on trial. Shaffer Burners for sale.

Northwest Acetylene Gas Co.  
312 Princess St., Winnipeg.

## THE W. E. SANFORD MFG CO., LTD.

HAMILTON, ONT.

Wholesale  
Clothing Manufacturers

Offices and sample rooms in the Sanford block, Winnipeg, corner of Princess and Bannatyne streets, where a complete set of samples can always be seen. Western representatives—H. Kite, W. Dunlop, Geo. Shaw, A. McAllister.

## FRANK LIGHTCAP

DEALER IN

**HIDES** PELTS, WOOL, SEWEGA Etc.  
EXPORTER OF  
**NORTHERN FURS**

Highest prices paid for consignments and returns made promptly.

Write for circulars containing market reports and full quotations.

172-174 KING ST., WINNIPEG.  
P. O. Box 484.

## Everything for Power

WINNIPEG MACHINERY & SUPPLY CO.

Wholesale Dealers

The Laurie Engine Co., Montreal, Engines, etc.; Olds Motor Works, Gasoline Engines for all purposes; The Hamilton Iron Tool Co., Ironworking Tools; Cowan & Co., Woodworking Machinery; The Ohio Pump Co., Canton, Ohio, "Ohio" Steam Pumps for all purposes; Flour



Mills and Elevator Machinery and Supplies; Saw Mill Machinery, Chisholm, Boyd & White Co., Boyd's Patent Brickmaking Machinery; The United Electric Co., Toronto; Electrical Motors, Dynamos and Supplies; Shafting, Pulleys and all Accessories. WRITE US

Second Hand Machinery Bought, Sold or Exchanged.

179 Notre Dame Ave. East, Winnipeg, Man.



## FISH

Fresh salt water fish, including salmon, halibut, cod, haddock, shad, trout, mackerel, smelt, tommy cods, flounders, herring, fannan haddie, sea bass and salt water eels.

**W. J. GUEST** Wholesale Fish, Game, Poultry, Etc.  
602 Main St., Winnipeg.

Harry Leadlay. Allison Leadlay.

## H. & A. LEADLAY

Successors to

Toronto Hide & Wool Co.

DEALERS IN

**HIDES, WOOL, SHEEP SKINS, TALLOW AND RAW FURS**

Highest market prices paid. Consignments solicited.

298 Ross St. Winnipeg, Man.

## Excelsior Cement

Makes the strongest and most desirable walls and floors for buildings. Full descriptions.

**Manitoba No. 1 Hard Wall Plaster**—Up-to-date Plaster for finishing walls. Made in Manitoba by

**THE MANITOBA UNION MINING CO. Ltd.**

Office—214 Grain Exchange, Winnipeg

## SOURIS COAL

The best and cheapest fuel in the market.

Shipped direct from mines at Roche Perce to all points in Manitoba and the Territories.

**Souris Coal Mining Co. Ltd.**

Winnipeg Office

P.O. Box 744. 447 MAIN ST.

## J. L. Meikle & Co's

Travellers are now on the road with a complete line of Spring and Imported China, Toys, Fancy Goods, Musical Instruments, etc. Their assortment and prices will interest you.

**J. L. MEIKLE & CO.**  
PORT ARTHUR, ONT.



# Marmalade Oranges

Order now as season is over about April 1st. If you don't want the oranges we can give you it done up ready for the table—

In 7-lb. pails, per doz..... \$7.20  
 In tins, per dozen..... 7.20  
 1-lb. glass jars..... 2.00

Attractive package. Order sample lot.

THE **MACPHERSON FRUIT CO.**

LIMITED.

491 Main St., Winnipeg

**Genuine Wabash Screen Doors**  
**Reliable Refrigerators**  
**Lightning Ice Cream Freezers**

Write for prices.

**MARSHALL-WELLS CO.**

WHOLESALE HARDWARE,  
 WINNIPEG.

# DRUGS

We now have a fresh stock of heavy drugs, such as EP-SOM SALTS, SULPHUR, Salt-petre, and Borax, not excelled in point of purity. Low prices for quantity.

Write for quotations.

**The Martin, Bole & Wynne Co.**

Wholesale Druggists,  
 P. O. Drawer 1461. WINNIPEG.

# S. Greenshields, Son & Co.

Wholesale . . . MONTREAL

**DRY GOODS**  
**MEN'S FURNISHINGS**  
**CARPETS, ETC.**

Winnipeg Sample Rooms:

412-414 McIntyre Block

Represented by—R. B. GALLAGHER, C. M. NEWTON, A. C. RUBSELL.



CANADA

## The World's Favorite Galvanized Iron

Unequaled for Quality,  
 Flatness and Durability.

**JOHN LYSAGHT, Limited, makers,**  
 Bristol, Eng.

A. C. LESLIE & CO., Montreal, Managers Canadian Branch

## THE WESTERN PACKING COMPANY

Our new abattoir on Alexander avenue is now completed, and running, and we are ready to supply the trade both in the city and country with fresh killed meat of finest quality. Mail orders given prompt attention.

We are also open to buy live or dressed hogs and all kinds of produce, paying highest cash prices for same.

Abattoir and Offices

ALEXANDER AVENUE, - WINNIPEG

# Maple Leaf Rubbers

Take the lead for style, fit and durability. Send us in your Spring order now before the Spring rush! Best discounts and terms. Our stock is large and complete in all lines of Boots, Shoes and Rubbers.

Write for catalogue.

**THE KILGOUR-RIMER CO. Ltd.** WHOLESALE  
 57 Princess Street, Winnipeg

# RAT PORTAGE LUMBER COMPANY

LIMITED

MANUFACTURERS OF . . .

**LUMBER,  
 LATH, SHINGLES,  
 SASH,  
 DOORS**

AND ALL KINDS OF WOODWORK

Head Office and Mills at RAT PORTAGE, ONT.

Branch: Point Douglas Avenue, WINNIPEG

# Wholesale Boots and Shoes

See our New Samples for Next Fall consisting of Felts, Moccasins, Gloves and Mitts, Rubbers and Overshoes. Sorting Orders Receive Prompt Attention—Stock Complete—Prices Right.

TRAVELLERS now on the road.

Berlin Rubbers (Daisy and America Brands.) Trunks and Valises

**H. G. MIDDLETON & BRO.** 139 ALBERT STREET WINNIPEG

Adjoining Leland Hotel.

P. O. BOX 823

# The Redding Shoe Mfg. Co.

Wholesale Boots and Shoes

You are invited to inspect carefully our New Samples for Next Fall, consisting of Moccasins, Gloves, Mitts, Rubbers, Overshoes, and the best line of Staple Goods ever shown in the West, for their Values, and Wearing Qualities. All Solid Leather Goods Every Pair Guaranteed.

Large and well assorted stock always on hand. Sorting orders receive Prompt and Careful Attention.

A trial solicited.

WAREHOUSES:

137 BANNATYNE AVE., WINNIPEG

P. O. Box 753.

Telephone 197



**MANITOBA.**

D. Parent is opening a grocery store at Leitcher.

McLeod has sold out his hotel business at Solgirth to L. Herder.

Sullivan & McRae have opened in the Belmont Hotel at Emerson.

H. A. Manwaring has bought Taylor Bros. general store business at Solgirth.

Dobson is buying out the general store business of H. T. Goodland at Goodland.

J. E. McKenzie Fish Co. of Solgirth are building a large tug boat to add to their fleet.

Wm. M. Wheeler, proprietor of the new Oak Lake, has sold his business to W. C. Harris.

Chas. Bonar & Co. have succeeded in the machine shop business of Bonar & Flaws at Tapid City.

N. Taylor has sold out his interest in the Crescent Hotel at Souris to Jasper Nation, of Cypress River.

J. Finkelnstein, of Winnipeg, has bought the general store, buildings and fixtures of J. Lowry at Regina.

The name of the Redmond Greenhouse Company, Montreal and Winnipeg, has been changed to that of The Redmond Company.

Red. Rich & Co., who established a better packing business in Winnipeg last year, are taking up quite an industry in this line.

Notices is given that the American Bankers' Club intend to do business in Manitoba and that its policies are being taken over by the Hudson's Bay Co.

During the month of February the total number of immigrants to arrive at Winnipeg was 1,655. During the same month of 1901 the number arrived was 1,222.

The Standard Machine Works, Winnipeg, are building an engine and boiler for the launch which will be put on the Lake of the Woods by the Y. M. C. A. of Winnipeg.

The Lathers' union of Winnipeg has notified the contractors and builders of Winnipeg that after the first of May all masons will demand an increase in pay to 35c per yard.

The firm of Loewen & Abrams, general contractors and disinterested partnership, it is the intention hold members of the firm to remove to Regina in the Northwest Territory.

Notice is given in the Manitoba Gazette of the incorporation of "Tees & Sons, Limited," Winnipeg, the parties being: James Tees, J. H. Persse, George S. Dingle, Hugh J. Freeman and Robert Persse.

The Union Bank has bought the corner lot on which stands Loewen's general store at Greta. The present building will be removed this spring to accommodate the increasing business of the bank in Greta.

The C. H. Wilson Furniture Co., Winnipeg, has purchased the warehouse on the corner of Henry and Lisette streets. They contending a large stock and manufacturing upholding.

The Moore Cement Manufacturing Co. of Miami, in which Wesley Moore, John Moore, and L. S. Smith, Secy., Mr. J. G. Grant, Chas. Kibicki, and John Hafner, Winnipeg, are interested, is applying for incorporation.

The Occidental Bicycle Co. is opening at 62 1/2 Main street. The Gondron road has been ordered by the Canadian Pacific Railway from a Philadelphia shipyard. The plan is to operate from Seattle via Vancouver, in competition to American lines on equal terms.

Pre broke out in the store of L. B. Matusch, at Ponoka, Alta., yesterday, destroying the building. The loss is about \$8,000, with insurance of \$5,000. The store of F. E. Akers & Co. was also destroyed. The loss of the latter was \$10,000, with only small insurance.

W. J. Giesst, fish merchant, Winnipeg, has bought twenty-four feet of Main street on adjoining site to present premises, and will likely erect a building upon it.

a building upon it this year for the accommodation of his large business. The price paid for the property was \$500 per foot of frontage.

Notice of application for incorporation given to the Pressed Brick & Co. are to be William Brydon, William G. Cheong, E. R. Hutchings, John Robertson and Hugh Artson; the purpose of the company is to manufacture bricks of all kinds of earthenware.

Clare & Brocker, managers of the Winnipeg branch of Clare Bros. & Co., block, at 24 Princess street, where they are moving from their old premises in Market street. They will have three floors and basement at the new place, with spur track from the Canadian Pacific Railway in the rear, giving them much larger quarters than formerly.

A. Hall & Co., manufacturers and general agents, Winnipeg, have arranged to handle the manufacturers of the Wortman & Ward Mfg. Co. of London, Ont. This is a very important line of goods, including feed, hays, pulpers, spade and disk harrows, hay forks, and other implements and a long line of miscellaneous articles of general utility. Hall & Co. intend to carry the entire warehouse accommodation shortly.

**ASSINIBOIA.**

R. Morrison is opening a general store at Wolsely.

The new farmers' elevator at Wolsely is nearing completion.

Tom & Macleod, undertakers, Macleod & Hat, have dissolved partnership. W. Tom continuing the business.

Ed. R. Brown intends opening in the future a general store and hardware store's furnishings and boots and shoes.

Jas. Fleming has bought the clear store of T. Leddy at Medford. He will continue the business. He will manufacture cigars.

J. McNeill, manufacturer, Arcola, have dissolved partnership. Jas. McEwen retires from the business, which is to be carried on by J. McNeill.

McClellan & Morgan have been appointed agents for the Deering Harrow Company at Qu'Appelle. They will carry a full line of implements and machinery.

The Indian Head Gazette says: J. W. Jones, an enterprising merchant of Grenfell, has purchased a large stone block of stores at Grenfell from O. P. Skrine, of Vancouver, B. C., lately advised by the Commercial.

Mr. Jones is to be congratulated on the deal, as this gives him much larger premises to handle his growing business.

A land deal in which a number of citizens of Minneapolis and St. Paul are interested has also been closed by the Manitoba Land and Investment Company. The deal covers 150,000 acres north and northwest of Langenburg and Yorkton, just across the border in Assiniboia. In addition to this block the company has handled 250,000 acres which were bought from the S. N. & W. Co. were formerly belonging to the Lord Elphinstone estate.

Besides as much more in the way of subdivided land were sold, 50,000 acres near Langenburg. These settlers have all been sold to American investors.

A recent budget of news from Wolsely, contained the following list of business changes, some of which have already been reported in The Commercial.

Banbury Bros., sold out to D. Curtis, who has just been closed by bought the stock of Manson Bros and carried into the corner store.

Banbury Bros. & Gordon succeeded A. B. Gibson in the banking and lumber business.

John A. Giesst, of Boissevain, Man., has opened out in the street, being by D. Curtis. The Dill, Hill Company is succeeded by the Wolsely Trading Company, and Parker & Co. succeeded J. T. Mutrie.

Gibson, Campbell & Wilson, disinterested partnership, forming two firms, both of which are building substantial warehouses in town. J. Duff's tailor, shortly taking to the plow, to be succeeded by Mr. Torrance, a Toronto cutter.

**ALBERTA.**

Taylor & Carr have started a pump factory at Strathcona.

An resident judge has been appointed at Edmonton in the person of Judge Scott.

H. G. Silver has disposed of his confectionery business at Edmonton to Mrs. Lechman.

R. P. Boyce is starting a paper at High River to be known as The Eye Opener. R. C. Edwards will be editor.

— Smith, baker, Wetaskwin, has taken R. C. Talbot into partnership, and the style will now be Smith & Talbot.

The National Trust Co. is opening a branch office at Edmonton. Mr. Whiteley will act as manager and Mr. Stewart as accountant.

Pratt and C. Cornelson have formed a partnership for the purpose of engaging in the grocery and producing business at Frank.

The proposals of Edmonton are being asked to approve of a by-law enabling the council to raise \$100,000 for a waterworks and sewerage system.

The details of the return of inland revenue for Calgary for the past month are as follows: Spirits, \$2,053.41; malt, \$853.25; tobacco, \$947.25; raw wool, \$500.00; cigars, \$190.45; total, \$5,500.46.

On Friday morning, the 7th inst., fire broke out in the store of J. B. Matson, at Ponoka, destroying same, and causing a loss of about \$8,000. The insurance of F. E. Akers & Co. was also destroyed, the amount being about \$10,000 and the insurance small.

The board of trade of Edmonton and its annual meeting a short time ago and elected the following new officers: K. W. Mackenzie, president;

R. B. Macleod, vice-president; councilors: R. Lee, A. H. Gurley, W. H. Anderson, P. T. Fisher, A. J. Anderson, A. B. Cornelson, H. H. Morris, G. Mansel, C. W. Strathey, J. T. Hogg.

F. Tims was re-appointed secretary at a salary of \$25 per month. The president's address laid special emphasis upon the importance to Edmonton of the northern trade.

**SASKATCHEWAN.**

The Saskatoon Drug Company, Limited, is applying for letters of incorporation to do business at Saskatoon. The D. A. H. Clark, Saskatoon, and S. A. Clark, Regina.

A wire from Toronto on Tuesday said: The Jennison power franchise which has been something of a million around the neck of Mr. William for several years, was cut loose this morning by the private bills committee of the legislature. The committee transferred Jennison's powers to the town of Port William, which must now compensate him for the work done and for the plans, lands, etc. The water cover will be used to operate the great flour mills that is proposed to construct at Port William and Port Arthur.

**NORTHWESTERN ONTARIO.**

Port Arthur is looking forward to a very active building movement within this season. The business community will be considerably enlarged, which means new buildings of various kinds and a considerable number of new residences will also be built. A new school to cost \$10,000 is projected.

The Canadian Northern Railway Company is expected to spend a considerable sum in improving its terminal facilities, and besides it may build another elevator. The River Lumber Company will finish its new mill shortly and then proceed with the erection of a number of residences for its employees. The C. P. R. will build a new station as a contribution towards the building movement.

Miss Pomade—Where is the paint department, please? Floor walker—Face or house?

**Employment**

is now the question for many men. You can make money selling the best assortment of goods in the West for sale fall or spring delivery for terms. Address—The Jewell Bros. Co., Lethbridge, Alta. (Established 1868. One thousand acres.)

**THE RIGHT PLACE.**

To advertise businesses for sale, partners wanted, travellers or clerks wanted, etc., is in The Commercial. It reaches the people you want to get at.

**LOANS AND INSURANCE.**

I wish to represent some reliable Loan and Insurance Companies here, under Carn Epp, General Agent, Winkler, Man.

**FOR SALE.**

The only Dutch ship in Swan River, Manitoba. Doing a good business. Price of Bird & Scarce, Swan River.

**WANTED.**

Partnership in an established mercantile business, wholesale preferred; investment up to \$20,000. Address E. W. M. B. care The Commercial.

**WANTED TO BUY.**

Butcher Business in Western Agricultural or Alberta District. Give full particulars when writing. I have a farm for sale, one mile from town. I will sell or trade for cattle. Butcher shop for sale. For further particulars apply to N. S. Webb, Dauphin, Manitoba.

**WANTED.**

To purchase, at rate on dollar, general store business. Stock Address \$30,000. Address Box 803, care The Commercial.

**FLOUR MILL WANTED.**

A liberal bonus is offered for the erection of a 100 bbl. flour mill and 30,000 bushel elevator. Alameda, Assa. Apply to J. W. Wilcox, Alameda, Assa.

**BONUS FOR FLOUR MILL.**

A liberal bonus is offered for the erection of a 75 barrel flour mill and elevator at Baldoon, Assa. Further particulars apply to T. J. W. Raymond, secretary of mill committee.

**GENERAL STORE FOR SALE.**

General store business in Stonewall; stock high and well assorted. Reason for selling ill-health, and too much other business to attend to. Address S. O. Bailey, Stonewall, Manitoba.

**SITUATION WANTED.**

Situation wanted as salesman in general store. Two years experience in dry goods, six years in groceries; first-class references furnished. B. Shepard, Dauphin, Man.

**FOR SALE.**

An up-to-date General Store in the Hazel Cliff and Valley View district, some better stock, \$30,000 well assorted and new. Prospects bright. Apply to Meader & Co., Hazel Cliff P. O., Assa.

**WANTED.**

Someone with one thousand cash to go shares with me in bringing Western horses to Manitoba. Market already in sight for all we can handle. Address Broncho, care of Tob Commercial.

**OVERALLS PANTS SHIRTS SMOCKS**

Make a bid for the large and ever increasing Overall Trade in your district. If you stock our goods you will not get it but keep it.

**The Hoover Mfg. Co. Ltd.**

Maw's Block, cor. King and William (opposite Leland Hotel), Winnipeg.

**OVERALLS PANTS SHIRTS SMOCKS**

Make a bid for the large and ever increasing Overall Trade in your district. If you stock our goods you will not get it but keep it.

**The Hoover Mfg. Co. Ltd.**

Maw's Block, cor. King and William (opposite Leland Hotel), Winnipeg.







London Live Stock Market.

London, March 10.—The market for Canadian cattle was stronger and prices show an advance of 1/4c as compared with a week ago, but American cattle and sheep unchanged. Choice States cattle sold at 13 1/2c, sheep at 12c, and choice Canadian cattle at 12 1/2c.

The Commercial Men.

W. K. Beeg, of Toronto, reached here this week. A. L. Cary of Toronto, was in Winnipeg last week. Stephen Hurstwit, of Toronto, is at the Grand, Winnipeg. J. C. Beckwith, of Montreal, was in the city on Tuesday. D. W. Glass, a Toronto traveller, was in the city this week. S. A. Barton, of Toronto, arrived from the east on Monday. C. P. Warner, a Montreal traveller, arrived in the city on Wednesday. E. H. Taaffe returned on Wednesday from a trip to Chicago and Montreal.

A. M. Munro, of Knox, Morgan & Co., Hamilton, returned home Saturday last week.

Movements of Business Men.

E. Fitzgerald Haines, representing The Northwestern Miller, of Minneapolis, was in Winnipeg this week on business. He left for the south again Friday. Jas. Wynne, a retired member of the wholesale drug company of Martin, Ohio, Wynne & Co., is in the city after spending the winter in the Eastern States.

LIVERPOOL CATTLE MARKET.

Special to The Commercial. Liverpool, March 14.—Canadian cattle quoted steady at 12 1/2 to 13 1/2c per pound, estimated weight.

LONDON SUGAR MARKET.

Special to The Commercial. Liverpool, March 14.—March option 2 1/2d lower, at 6 1/2d.

LIVERPOOL CHEESE MARKET.

Special to The Commercial. Liverpool, March 14.—Finest Canadian cheese, September-October, 48s 10d to 49s.

The Weather.

A couple of weeks of spring like weather came to an end yesterday, when a storm of wind and snow hit the city. The storm continued to rage all night and is keeping up its vigorous fashion to-day. The storm is by all odds the most severe of the winter—so far as the only winter experienced this winter. A considerable amount of snow has fallen and this is piled up in drifts. Previous to yesterday the roads were quite dry, and the snow lay in spots, except in the woods or sheltered places.

The business of developing the peat fuel resources of Ontario has evidently not proved to be a very profitable one so far as a company which has long engaged in that business has just failed at Peterborough. The company lost \$20,000 in the venture.

A. F. Grady, of Macleod, Alberta, was in Winnipeg this week attending the annual meeting of the C. W. Mr. Grady is enthusiastic as to the future of Macleod, which he believes is destined to become an important point. Many new settlers are coming in, and the cattle and horse ranching interests are very prosperous. The winter has, however, been a very rough one for stock on the ranges. The Canadian wool market is slowly but surely in a better position, and some improvement in prices is expected this year. It is estimated that there are not more than 100,000 pounds of wool left in Ontario. There are recent reports to the effect that this is the case there is some ground for hoping that the situation will improve this year. Much of the wool exported during the past six months is believed to have been sold at a loss.

Chicago Board of Trade Prices.

Chicago, March 10.—Closing prices for wheat: No. 2 red, 97 1/2c; No. 2 hard, 97c; No. 2 soft, 97 1/2c; No. 3 soft, 97c; No. 4 soft, 96 1/2c; No. 5 soft, 96 1/2c; No. 6 soft, 96 1/2c; No. 7 soft, 96 1/2c; No. 8 soft, 96 1/2c; No. 9 soft, 96 1/2c; No. 10 soft, 96 1/2c; No. 11 soft, 96 1/2c; No. 12 soft, 96 1/2c; No. 13 soft, 96 1/2c; No. 14 soft, 96 1/2c; No. 15 soft, 96 1/2c; No. 16 soft, 96 1/2c; No. 17 soft, 96 1/2c; No. 18 soft, 96 1/2c; No. 19 soft, 96 1/2c; No. 20 soft, 96 1/2c; No. 21 soft, 96 1/2c; No. 22 soft, 96 1/2c; No. 23 soft, 96 1/2c; No. 24 soft, 96 1/2c; No. 25 soft, 96 1/2c; No. 26 soft, 96 1/2c; No. 27 soft, 96 1/2c; No. 28 soft, 96 1/2c; No. 29 soft, 96 1/2c; No. 30 soft, 96 1/2c; No. 31 soft, 96 1/2c; No. 32 soft, 96 1/2c; No. 33 soft, 96 1/2c; No. 34 soft, 96 1/2c; No. 35 soft, 96 1/2c; No. 36 soft, 96 1/2c; No. 37 soft, 96 1/2c; No. 38 soft, 96 1/2c; No. 39 soft, 96 1/2c; No. 40 soft, 96 1/2c; No. 41 soft, 96 1/2c; No. 42 soft, 96 1/2c; No. 43 soft, 96 1/2c; No. 44 soft, 96 1/2c; No. 45 soft, 96 1/2c; No. 46 soft, 96 1/2c; No. 47 soft, 96 1/2c; No. 48 soft, 96 1/2c; No. 49 soft, 96 1/2c; No. 50 soft, 96 1/2c; No. 51 soft, 96 1/2c; No. 52 soft, 96 1/2c; No. 53 soft, 96 1/2c; No. 54 soft, 96 1/2c; No. 55 soft, 96 1/2c; No. 56 soft, 96 1/2c; No. 57 soft, 96 1/2c; No. 58 soft, 96 1/2c; No. 59 soft, 96 1/2c; No. 60 soft, 96 1/2c; No. 61 soft, 96 1/2c; No. 62 soft, 96 1/2c; No. 63 soft, 96 1/2c; No. 64 soft, 96 1/2c; No. 65 soft, 96 1/2c; No. 66 soft, 96 1/2c; No. 67 soft, 96 1/2c; No. 68 soft, 96 1/2c; No. 69 soft, 96 1/2c; No. 70 soft, 96 1/2c; No. 71 soft, 96 1/2c; No. 72 soft, 96 1/2c; No. 73 soft, 96 1/2c; No. 74 soft, 96 1/2c; No. 75 soft, 96 1/2c; No. 76 soft, 96 1/2c; No. 77 soft, 96 1/2c; No. 78 soft, 96 1/2c; No. 79 soft, 96 1/2c; No. 80 soft, 96 1/2c; No. 81 soft, 96 1/2c; No. 82 soft, 96 1/2c; No. 83 soft, 96 1/2c; No. 84 soft, 96 1/2c; No. 85 soft, 96 1/2c; No. 86 soft, 96 1/2c; No. 87 soft, 96 1/2c; No. 88 soft, 96 1/2c; No. 89 soft, 96 1/2c; No. 90 soft, 96 1/2c; No. 91 soft, 96 1/2c; No. 92 soft, 96 1/2c; No. 93 soft, 96 1/2c; No. 94 soft, 96 1/2c; No. 95 soft, 96 1/2c; No. 96 soft, 96 1/2c; No. 97 soft, 96 1/2c; No. 98 soft, 96 1/2c; No. 99 soft, 96 1/2c; No. 100 soft, 96 1/2c.

Chicago, March 11.—Closing prices for wheat: No. 2 red, 97 1/2c; No. 2 hard, 97c; No. 2 soft, 97 1/2c; No. 3 soft, 97c; No. 4 soft, 96 1/2c; No. 5 soft, 96 1/2c; No. 6 soft, 96 1/2c; No. 7 soft, 96 1/2c; No. 8 soft, 96 1/2c; No. 9 soft, 96 1/2c; No. 10 soft, 96 1/2c; No. 11 soft, 96 1/2c; No. 12 soft, 96 1/2c; No. 13 soft, 96 1/2c; No. 14 soft, 96 1/2c; No. 15 soft, 96 1/2c; No. 16 soft, 96 1/2c; No. 17 soft, 96 1/2c; No. 18 soft, 96 1/2c; No. 19 soft, 96 1/2c; No. 20 soft, 96 1/2c; No. 21 soft, 96 1/2c; No. 22 soft, 96 1/2c; No. 23 soft, 96 1/2c; No. 24 soft, 96 1/2c; No. 25 soft, 96 1/2c; No. 26 soft, 96 1/2c; No. 27 soft, 96 1/2c; No. 28 soft, 96 1/2c; No. 29 soft, 96 1/2c; No. 30 soft, 96 1/2c; No. 31 soft, 96 1/2c; No. 32 soft, 96 1/2c; No. 33 soft, 96 1/2c; No. 34 soft, 96 1/2c; No. 35 soft, 96 1/2c; No. 36 soft, 96 1/2c; No. 37 soft, 96 1/2c; No. 38 soft, 96 1/2c; No. 39 soft, 96 1/2c; No. 40 soft, 96 1/2c; No. 41 soft, 96 1/2c; No. 42 soft, 96 1/2c; No. 43 soft, 96 1/2c; No. 44 soft, 96 1/2c; No. 45 soft, 96 1/2c; No. 46 soft, 96 1/2c; No. 47 soft, 96 1/2c; No. 48 soft, 96 1/2c; No. 49 soft, 96 1/2c; No. 50 soft, 96 1/2c; No. 51 soft, 96 1/2c; No. 52 soft, 96 1/2c; No. 53 soft, 96 1/2c; No. 54 soft, 96 1/2c; No. 55 soft, 96 1/2c; No. 56 soft, 96 1/2c; No. 57 soft, 96 1/2c; No. 58 soft, 96 1/2c; No. 59 soft, 96 1/2c; No. 60 soft, 96 1/2c; No. 61 soft, 96 1/2c; No. 62 soft, 96 1/2c; No. 63 soft, 96 1/2c; No. 64 soft, 96 1/2c; No. 65 soft, 96 1/2c; No. 66 soft, 96 1/2c; No. 67 soft, 96 1/2c; No. 68 soft, 96 1/2c; No. 69 soft, 96 1/2c; No. 70 soft, 96 1/2c; No. 71 soft, 96 1/2c; No. 72 soft, 96 1/2c; No. 73 soft, 96 1/2c; No. 74 soft, 96 1/2c; No. 75 soft, 96 1/2c; No. 76 soft, 96 1/2c; No. 77 soft, 96 1/2c; No. 78 soft, 96 1/2c; No. 79 soft, 96 1/2c; No. 80 soft, 96 1/2c; No. 81 soft, 96 1/2c; No. 82 soft, 96 1/2c; No. 83 soft, 96 1/2c; No. 84 soft, 96 1/2c; No. 85 soft, 96 1/2c; No. 86 soft, 96 1/2c; No. 87 soft, 96 1/2c; No. 88 soft, 96 1/2c; No. 89 soft, 96 1/2c; No. 90 soft, 96 1/2c; No. 91 soft, 96 1/2c; No. 92 soft, 96 1/2c; No. 93 soft, 96 1/2c; No. 94 soft, 96 1/2c; No. 95 soft, 96 1/2c; No. 96 soft, 96 1/2c; No. 97 soft, 96 1/2c; No. 98 soft, 96 1/2c; No. 99 soft, 96 1/2c; No. 100 soft, 96 1/2c.

Chicago, March 12.—Closing prices for wheat: No. 2 red, 97 1/2c; No. 2 hard, 97c; No. 2 soft, 97 1/2c; No. 3 soft, 97c; No. 4 soft, 96 1/2c; No. 5 soft, 96 1/2c; No. 6 soft, 96 1/2c; No. 7 soft, 96 1/2c; No. 8 soft, 96 1/2c; No. 9 soft, 96 1/2c; No. 10 soft, 96 1/2c; No. 11 soft, 96 1/2c; No. 12 soft, 96 1/2c; No. 13 soft, 96 1/2c; No. 14 soft, 96 1/2c; No. 15 soft, 96 1/2c; No. 16 soft, 96 1/2c; No. 17 soft, 96 1/2c; No. 18 soft, 96 1/2c; No. 19 soft, 96 1/2c; No. 20 soft, 96 1/2c; No. 21 soft, 96 1/2c; No. 22 soft, 96 1/2c; No. 23 soft, 96 1/2c; No. 24 soft, 96 1/2c; No. 25 soft, 96 1/2c; No. 26 soft, 96 1/2c; No. 27 soft, 96 1/2c; No. 28 soft, 96 1/2c; No. 29 soft, 96 1/2c; No. 30 soft, 96 1/2c; No. 31 soft, 96 1/2c; No. 32 soft, 96 1/2c; No. 33 soft, 96 1/2c; No. 34 soft, 96 1/2c; No. 35 soft, 96 1/2c; No. 36 soft, 96 1/2c; No. 37 soft, 96 1/2c; No. 38 soft, 96 1/2c; No. 39 soft, 96 1/2c; No. 40 soft, 96 1/2c; No. 41 soft, 96 1/2c; No. 42 soft, 96 1/2c; No. 43 soft, 96 1/2c; No. 44 soft, 96 1/2c; No. 45 soft, 96 1/2c; No. 46 soft, 96 1/2c; No. 47 soft, 96 1/2c; No. 48 soft, 96 1/2c; No. 49 soft, 96 1/2c; No. 50 soft, 96 1/2c; No. 51 soft, 96 1/2c; No. 52 soft, 96 1/2c; No. 53 soft, 96 1/2c; No. 54 soft, 96 1/2c; No. 55 soft, 96 1/2c; No. 56 soft, 96 1/2c; No. 57 soft, 96 1/2c; No. 58 soft, 96 1/2c; No. 59 soft, 96 1/2c; No. 60 soft, 96 1/2c; No. 61 soft, 96 1/2c; No. 62 soft, 96 1/2c; No. 63 soft, 96 1/2c; No. 64 soft, 96 1/2c; No. 65 soft, 96 1/2c; No. 66 soft, 96 1/2c; No. 67 soft, 96 1/2c; No. 68 soft, 96 1/2c; No. 69 soft, 96 1/2c; No. 70 soft, 96 1/2c; No. 71 soft, 96 1/2c; No. 72 soft, 96 1/2c; No. 73 soft, 96 1/2c; No. 74 soft, 96 1/2c; No. 75 soft, 96 1/2c; No. 76 soft, 96 1/2c; No. 77 soft, 96 1/2c; No. 78 soft, 96 1/2c; No. 79 soft, 96 1/2c; No. 80 soft, 96 1/2c; No. 81 soft, 96 1/2c; No. 82 soft, 96 1/2c; No. 83 soft, 96 1/2c; No. 84 soft, 96 1/2c; No. 85 soft, 96 1/2c; No. 86 soft, 96 1/2c; No. 87 soft, 96 1/2c; No. 88 soft, 96 1/2c; No. 89 soft, 96 1/2c; No. 90 soft, 96 1/2c; No. 91 soft, 96 1/2c; No. 92 soft, 96 1/2c; No. 93 soft, 96 1/2c; No. 94 soft, 96 1/2c; No. 95 soft, 96 1/2c; No. 96 soft, 96 1/2c; No. 97 soft, 96 1/2c; No. 98 soft, 96 1/2c; No. 99 soft, 96 1/2c; No. 100 soft, 96 1/2c.

Chicago—Wheat, May 74 1/2c; July, 75 1/2c; Sept., 75 1/2c; Corn, May, 61c; July, 61c; Sept., 61c; Oats, May, 45c; July, 45c; Sept., 45c; Pork, May, 15c; July, 15c; Sept., 15c; Lard, May, 10c; July, 10c; Sept., 10c; Ribs, May, 8c; July, 8c; Sept., 8c.

Chicago, March 15.—Wheat option closed at 74 1/2c; a year ago May wheat closed at 74 1/2c; two years ago May wheat closed at 67 1/2c; three years ago at 67 1/2c, and four years ago at 81 1/2c.

Minneapolis Wheat.—Closing prices for wheat: No. 2, 97 1/2c; No. 3, 97c; No. 4, 96 1/2c; No. 5, 96 1/2c; No. 6, 96 1/2c; No. 7, 96 1/2c; No. 8, 96 1/2c; No. 9, 96 1/2c; No. 10, 96 1/2c; No. 11, 96 1/2c; No. 12, 96 1/2c; No. 13, 96 1/2c; No. 14, 96 1/2c; No. 15, 96 1/2c; No. 16, 96 1/2c; No. 17, 96 1/2c; No. 18, 96 1/2c; No. 19, 96 1/2c; No. 20, 96 1/2c; No. 21, 96 1/2c; No. 22, 96 1/2c; No. 23, 96 1/2c; No. 24, 96 1/2c; No. 25, 96 1/2c; No. 26, 96 1/2c; No. 27, 96 1/2c; No. 28, 96 1/2c; No. 29, 96 1/2c; No. 30, 96 1/2c; No. 31, 96 1/2c; No. 32, 96 1/2c; No. 33, 96 1/2c; No. 34, 96 1/2c; No. 35, 96 1/2c; No. 36, 96 1/2c; No. 37, 96 1/2c; No. 38, 96 1/2c; No. 39, 96 1/2c; No. 40, 96 1/2c; No. 41, 96 1/2c; No. 42, 96 1/2c; No. 43, 96 1/2c; No. 44, 96 1/2c; No. 45, 96 1/2c; No. 46, 96 1/2c; No. 47, 96 1/2c; No. 48, 96 1/2c; No. 49, 96 1/2c; No. 50, 96 1/2c; No. 51, 96 1/2c; No. 52, 96 1/2c; No. 53, 96 1/2c; No. 54, 96 1/2c; No. 55, 96 1/2c; No. 56, 96 1/2c; No. 57, 96 1/2c; No. 58, 96 1/2c; No. 59, 96 1/2c; No. 60, 96 1/2c; No. 61, 96 1/2c; No. 62, 96 1/2c; No. 63, 96 1/2c; No. 64, 96 1/2c; No. 65, 96 1/2c; No. 66, 96 1/2c; No. 67, 96 1/2c; No. 68, 96 1/2c; No. 69, 96 1/2c; No. 70, 96 1/2c; No. 71, 96 1/2c; No. 72, 96 1/2c; No. 73, 96 1/2c; No. 74, 96 1/2c; No. 75, 96 1/2c; No. 76, 96 1/2c; No. 77, 96 1/2c; No. 78, 96 1/2c; No. 79, 96 1/2c; No. 80, 96 1/2c; No. 81, 96 1/2c; No. 82, 96 1/2c; No. 83, 96 1/2c; No. 84, 96 1/2c; No. 85, 96 1/2c; No. 86, 96 1/2c; No. 87, 96 1/2c; No. 88, 96 1/2c; No. 89, 96 1/2c; No. 90, 96 1/2c; No. 91, 96 1/2c; No. 92, 96 1/2c; No. 93, 96 1/2c; No. 94, 96 1/2c; No. 95, 96 1/2c; No. 96, 96 1/2c; No. 97, 96 1/2c; No. 98, 96 1/2c; No. 99, 96 1/2c; No. 100, 96 1/2c.

Minneapolis, March 12.—Closing prices for wheat: No. 2, 97 1/2c; No. 3, 97c; No. 4, 96 1/2c; No. 5, 96 1/2c; No. 6, 96 1/2c; No. 7, 96 1/2c; No. 8, 96 1/2c; No. 9, 96 1/2c; No. 10, 96 1/2c; No. 11, 96 1/2c; No. 12, 96 1/2c; No. 13, 96 1/2c; No. 14, 96 1/2c; No. 15, 96 1/2c; No. 16, 96 1/2c; No. 17, 96 1/2c; No. 18, 96 1/2c; No. 19, 96 1/2c; No. 20, 96 1/2c; No. 21, 96 1/2c; No. 22, 96 1/2c; No. 23, 96 1/2c; No. 24, 96 1/2c; No. 25, 96 1/2c; No. 26, 96 1/2c; No. 27, 96 1/2c; No. 28, 96 1/2c; No. 29, 96 1/2c; No. 30, 96 1/2c; No. 31, 96 1/2c; No. 32, 96 1/2c; No. 33, 96 1/2c; No. 34, 96 1/2c; No. 35, 96 1/2c; No. 36, 96 1/2c; No. 37, 96 1/2c; No. 38, 96 1/2c; No. 39, 96 1/2c; No. 40, 96 1/2c; No. 41, 96 1/2c; No. 42, 96 1/2c; No. 43, 96 1/2c; No. 44, 96 1/2c; No. 45, 96 1/2c; No. 46, 96 1/2c; No. 47, 96 1/2c; No. 48, 96 1/2c; No. 49, 96 1/2c; No. 50, 96 1/2c; No. 51, 96 1/2c; No. 52, 96 1/2c; No. 53, 96 1/2c; No. 54, 96 1/2c; No. 55, 96 1/2c; No. 56, 96 1/2c; No. 57, 96 1/2c; No. 58, 96 1/2c; No. 59, 96 1/2c; No. 60, 96 1/2c; No. 61, 96 1/2c; No. 62, 96 1/2c; No. 63, 96 1/2c; No. 64, 96 1/2c; No. 65, 96 1/2c; No. 66, 96 1/2c; No. 67, 96 1/2c; No. 68, 96 1/2c; No. 69, 96 1/2c; No. 70, 96 1/2c; No. 71, 96 1/2c; No. 72, 96 1/2c; No. 73, 96 1/2c; No. 74, 96 1/2c; No. 75, 96 1/2c; No. 76, 96 1/2c; No. 77, 96 1/2c; No. 78, 96 1/2c; No. 79, 96 1/2c; No. 80, 96 1/2c; No. 81, 96 1/2c; No. 82, 96 1/2c; No. 83, 96 1/2c; No. 84, 96 1/2c; No. 85, 96 1/2c; No. 86, 96 1/2c; No. 87, 96 1/2c; No. 88, 96 1/2c; No. 89, 96 1/2c; No. 90, 96 1/2c; No. 91, 96 1/2c; No. 92, 96 1/2c; No. 93, 96 1/2c; No. 94, 96 1/2c; No. 95, 96 1/2c; No. 96, 96 1/2c; No. 97, 96 1/2c; No. 98, 96 1/2c; No. 99, 96 1/2c; No. 100, 96 1/2c.

Minneapolis, March 11.—Closing prices for wheat: No. 2, 97 1/2c; No. 3, 97c; No. 4, 96 1/2c; No. 5, 96 1/2c; No. 6, 96 1/2c; No. 7, 96 1/2c; No. 8, 96 1/2c; No. 9, 96 1/2c; No. 10, 96 1/2c; No. 11, 96 1/2c; No. 12, 96 1/2c; No. 13, 96 1/2c; No. 14, 96 1/2c; No. 15, 96 1/2c; No. 16, 96 1/2c; No. 17, 96 1/2c; No. 18, 96 1/2c; No. 19, 96 1/2c; No. 20, 96 1/2c; No. 21, 96 1/2c; No. 22, 96 1/2c; No. 23, 96 1/2c; No. 24, 96 1/2c; No. 25, 96 1/2c; No. 26, 96 1/2c; No. 27, 96 1/2c; No. 28, 96 1/2c; No. 29, 96 1/2c; No. 30, 96 1/2c; No. 31, 96 1/2c; No. 32, 96 1/2c; No. 33, 96 1/2c; No. 34, 96 1/2c; No. 35, 96 1/2c; No. 36, 96 1/2c; No. 37, 96 1/2c; No. 38, 96 1/2c; No. 39, 96 1/2c; No. 40, 96 1/2c; No. 41, 96 1/2c; No. 42, 96 1/2c; No. 43, 96 1/2c; No. 44, 96 1/2c; No. 45, 96 1/2c; No. 46, 96 1/2c; No. 47, 96 1/2c; No. 48, 96 1/2c; No. 49, 96 1/2c; No. 50, 96 1/2c; No. 51, 96 1/2c; No. 52, 96 1/2c; No. 53, 96 1/2c; No. 54, 96 1/2c; No. 55, 96 1/2c; No. 56, 96 1/2c; No. 57, 96 1/2c; No. 58, 96 1/2c; No. 59, 96 1/2c; No. 60, 96 1/2c; No. 61, 96 1/2c; No. 62, 96 1/2c; No. 63, 96 1/2c; No. 64, 96 1/2c; No. 65, 96 1/2c; No. 66, 96 1/2c; No. 67, 96 1/2c; No. 68, 96 1/2c; No. 69, 96 1/2c; No. 70, 96 1/2c; No. 71, 96 1/2c; No. 72, 96 1/2c; No. 73, 96 1/2c; No. 74, 96 1/2c; No. 75, 96 1/2c; No. 76, 96 1/2c; No. 77, 96 1/2c; No. 78, 96 1/2c; No. 79, 96 1/2c; No. 80, 96 1/2c; No. 81, 96 1/2c; No. 82, 96 1/2c; No. 83, 96 1/2c; No. 84, 96 1/2c; No. 85, 96 1/2c; No. 86, 96 1/2c; No. 87, 96 1/2c; No. 88, 96 1/2c; No. 89, 96 1/2c; No. 90, 96 1/2c; No. 91, 96 1/2c; No. 92, 96 1/2c; No. 93, 96 1/2c; No. 94, 96 1/2c; No. 95, 96 1/2c; No. 96, 96 1/2c; No. 97, 96 1/2c; No. 98, 96 1/2c; No. 99, 96 1/2c; No. 100, 96 1/2c.

Minneapolis, March 10.—Closing prices for wheat: No. 2, 97 1/2c; No. 3, 97c; No. 4, 96 1/2c; No. 5, 96 1/2c; No. 6, 96 1/2c; No. 7, 96 1/2c; No. 8, 96 1/2c; No. 9, 96 1/2c; No. 10, 96 1/2c; No. 11, 96 1/2c; No. 12, 96 1/2c; No. 13, 96 1/2c; No. 14, 96 1/2c; No. 15, 96 1/2c; No. 16, 96 1/2c; No. 17, 96 1/2c; No. 18, 96 1/2c; No. 19, 96 1/2c; No. 20, 96 1/2c; No. 21, 96 1/2c; No. 22, 96 1/2c; No. 23, 96 1/2c; No. 24, 96 1/2c; No. 25, 96 1/2c; No. 26, 96 1/2c; No. 27, 96 1/2c; No. 28, 96 1/2c; No. 29, 96 1/2c; No. 30, 96 1/2c; No. 31, 96 1/2c; No. 32, 96 1/2c; No. 33, 96 1/2c; No. 34, 96 1/2c; No. 35, 96 1/2c; No. 36, 96 1/2c; No. 37, 96 1/2c; No. 38, 96 1/2c; No. 39, 96 1/2c; No. 40, 96 1/2c; No. 41, 96 1/2c; No. 42, 96 1/2c; No. 43, 96 1/2c; No. 44, 96 1/2c; No. 45, 96 1/2c; No. 46, 96 1/2c; No. 47, 96 1/2c; No. 48, 96 1/2c; No. 49, 96 1/2c; No. 50, 96 1/2c; No. 51, 96 1/2c; No. 52, 96 1/2c; No. 53, 96 1/2c; No. 54, 96 1/2c; No. 55, 96 1/2c; No. 56, 96 1/2c; No. 57, 96 1/2c; No. 58, 96 1/2c; No. 59, 96 1/2c; No. 60, 96 1/2c; No. 61, 96 1/2c; No. 62, 96 1/2c; No. 63, 96 1/2c; No. 64, 96 1/2c; No. 65, 96 1/2c; No. 66, 96 1/2c; No. 67, 96 1/2c; No. 68, 96 1/2c; No. 69, 96 1/2c; No. 70, 96 1/2c; No. 71, 96 1/2c; No. 72, 96 1/2c; No. 73, 96 1/2c; No. 74, 96 1/2c; No. 75, 96 1/2c; No. 76, 96 1/2c







Some Reasons Why You Should Buy



# Boston Rubbers



BECAUSE there are no better goods made in America.

BECAUSE we give  $2\frac{1}{2}$  per cent more Discount than any other Company.

BECAUSE we allow same quantity bonus as other Companies.

BECAUSE we absolutely and unconditionally guarantee our goods.

BECAUSE no other Company in Canada is allowed under heavy penalty to guarantee rubbers in any way, shape, or form.

BECAUSE it cost us LESS THAN ONE CENT PER CASE last season to make good our guarantee.

BECAUSE we are showing the most progressive 1902 samples on the road.

BECAUSE our goods are packed beautifully and shipped promptly.

BECAUSE our new "Canvas Back" and other lines will not be imitated by other makers until NEXT season.



## A Special Offer

**1000 Cases** of the best "punched" goods ever sold in Canada will be offered at low prices for next season's delivery. These of course are not guaranteed. No jobs or seconds are ever guaranteed, no matter how reliable they may be.

ARTHUR CONGDON, Winnipeg

P. D. ROE, President.

R. ABERNETHY, Vice-President.

T. F. PATERSON, Sec.-Treas.

# The Canadian Pacific Lumber Company Limited

MANAGER  
PORT MOODY, B.C.

CAPACITY: LUMBER—60,000 feet per day; LATH—20,000; SHINGLES—120,000.

We have the largest dry kiln capacity of any mill in B.C.; also the largest amount of sheds, and these are well stocked with Manitoba lumber. We have seven planers and are prepared to ship promptly. We understand the requirements of Manitoba dealers. Send us for your next car. HENRY BYRNES, Selling Agent, Winnipeg.

Manufacturers of and Wholesale  
Dealers in all Classes of  
British Columbia

LUMBER, LATH,  
SHINGLES,  
MOULDINGS, Etc.

## Steel Ship Building in Canada.

G. E. Hunter, of Swan, Hunter & Co., Newcastle-on-Tyne, has finished his investigation for the press on the subject of a steel ship building industry in Canada. He visits several points in the Dominion en route to his departure for England, and in Montreal: "I see a great future for the steel ship building industry in Canada. From the nature of things steel ship building can be done at a cheaper rate than elsewhere in the world. No country will in the future compete with Canada—neither England nor Germany nor the United States. At present, however, it is necessary for the construction of ships in this country steel plates and bars are required, and as they are not manufactured in Canada, they would have to be imported from England or Germany. This would necessarily be a heavy handicap if an industry of this character were started at the present time. There is, however, every probability of steel for ship building purposes being manufactured in Nova Scotia in the future, but at present there is no such plant in existence. Another important item which must be carefully considered in the establishment of a steel ship building enterprise is the labor problem. From what I have seen during my visit to Canada I believe there is a splendid class of material in the Dominion, only awaiting the necessary training and experience. It is my firm conviction that the labor which can be obtained for the purpose of carrying on a great steel building enterprise in Canada will prove quite adequate and worthy of the great natural advantages of the country. I can plainly see the onset of a manufacturing steel industry which greatly exceeded in the future. I am persuaded that the best steel ships will be produced in Nova Scotia; but, remember, that the cost of skilled labor and raw materials is not less here than in Europe, but, to counterbalance this, I confidently anticipate a very class of skilled workmen springing up, which will do credit to the country. The higher cost of labor, moreover, will be amply offset by the cheapness of steel production in other directions."

## PROHIBITION IN ONTARIO.

It was announced last week that the Ontario government had changed the date of voting on the prohibition referendum, in deference to the wishes of the temperance people, so that the vote would be taken on the same day as the municipal election, however the legislative assembly. Premier Ross stated that this would not be done, but the date has been changed from October to November 14. The temperance people said that all those opposed to prohibition would simply require to stay at home, and hence any one voting would be marked as a supporter of prohibition. This through the vote would result in intimidating many voters, who would be afraid to openly offer the liquor vote. The temperance people refused to acquiesce in the views of the temperance people, in order to enforce the law. The law, the vote in the affirmative must exceed one-half of the vote polled at the provincial elections in 1918. It was at first intended to base the referendum vote on the number of votes polled at the provincial elections to be held this year, previous to taking the vote on the proposed liquor law. It was, however, thought that this might lead some ardent temperance advocates to abstain from voting at the provincial elections, so as to reduce the total vote and thus make it easier for them to carry the referendum.

A forty-two of the large wholesale dealers in paper of New York formed an organization to be known as the Wholesale Paper Dealers' Association of the city of New York. The combined dealers represent in capital \$10,000,000.

The Ontario output of paper in 1901 was 84 per cent. greater in value than in 1900. Nickel was 145 per cent. greater in value. The production of iron ore was 56 per cent. greater; pig iron 82 per cent. and the production of steel increased nearly 50 per cent. The production of steel was 1,162,278 tons, and the value \$532,826.80.

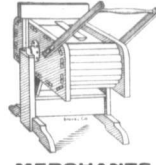
**TREES THAT GROW**

WRITE AT ONCE FOR SPRING 1902 CATALOGUE  
DO NOT ORDER FROM OLD EDITIONS

Fruit trees, small fruits, evergreens and deciduous windbreak trees, ornamental trees, shrubs and plants, house plants and foliage plants for the west. We offer in these lines the most complete assortment of the west. And remember that we have been testing varieties here in Minnesota for over 20 years and catalogue only those that are best adapted to Northern culture.

SPECIALTIES—Okabena apple, Lyman's Prolific crab apple, Alkin and Surprise plum, Compass cherry, North Star Currant, Red Jacket gooseberry.

THE JEWELL NURSERY CO., Lake City, Minn.  
Established 1858. 1,000 Acres. Capital \$100,000.



## MERCHANTS

Why not sell the cheapest and best Washers. You know the price of the Boss Washer is \$10. They clean at one time in 15 minutes a quantity of clothes equal to about eight washes of three shabets and require a boiler full of suds. Now I am prepared to give you the McCrossan Rocker that will clean at one time a quantity of clothes equal to ten shabets or four shabets with half a boiler full of suds and in less time, and if I cannot clean the clothes as well as any \$10 washer that is in use, I will pay one hundred dollars for the first one which will be in Winnipeg. The price is only \$5.00, not \$10.00. These washers have been sent to the old country to friends there, which I am prepared to prove. My perless now cleans nearly the same quantity and it is only \$3.00. The Improved Manitoba, my best, 14 shirt size, is \$10; 20 shirt size, in two compartments, only \$14; 24 shirt size, \$16; Wingers, \$5; \$6 and \$8.50. All good. T. MCCROSSAN, 354 Banmysty St., Winnipeg.

In parliament at Ottawa, in reply to Mr. Lennox, Hon. Mr. Blair said that it was intended to introduce a bill this session to regulate and control freight rates.

A settlers' excursion party arrived from eastern Canada on Thursday numbering 360 persons. About 100 of these were parties returning from a trip east, and the balance new settlers.

It is said the United States courts are unable to deal effectively with the Northern Securities "controversy" through which the Great Northern and Northern Pacific Railway interests have been consolidated.

The Western Forestry Association will hold a meeting in Winnipeg on March 29, in the city hall. An address will be given by E. Stewart, Dominion superintendent of forestry, and A. P. Stevenson, of Nelson, Man., will talk on the applications received for trees and give advice as to their location and treatment.

**What we have we'll hold**  
As every man who has purchased Page Fencing knows he has the best Fence on the market.

**What we haven't we're after**  
and if you are in the market for fencing we would like to have you consider the merits of the "Page" Fence. Galvanized Wire, made in our own Wire Mills, woven by ourselves. Shipped already to put up.

THE PAGE WIRE FENCE CO. (Ltd.)  
WALKERVILLE, ONT.

ROSS & ROSS,  
General Agents, Winnipeg.

**PATENTS** TRADE MARK  
DESIGNS  
PROCURED IN ALL COUNTRIES  
SPECIAL ATTENTION GIVEN TO PATENT LITIGATION  
PAMPHLET SENT FREE ON APPLICATION  
RIDOUT & MAYBEE, 103 BAY STREET, TORONTO

Prince Edward Island levies a provincial tax on commercial travellers visiting the province. The tax was discussed in Parliament at Ottawa on Tuesday, when the opinion was expressed that the law was unconstitutional.

The telegraph and telephone bill which the Hon. Charles Fitzpatrick, minister of justice, has given notice of, is for the purpose of bringing those companies under the control of the Dominion government precisely in the same way as railway corporations. We felt tempted to remark in this connection that if the government does not make its control of these public utilities any more effective than its control of the railways has been in the past the new bill will be worth very little.

**The British Columbia Mills  
Timber and Trading Co.**

MANUFACTURERS OF  
**FIR AND CEDAR LUMBER**  
SHINGLES, DOORS, WINDOWS, ETC.

Mills:  
HASTINGS SAW MILL, Vancouver  
ROYAL CITY MILL,  
ROYAL CITY MILL, New Westminster  
MOODYVILLE MILL, Burrard Inlet

HEAD OFFICE, VANCOUVER, B.C.

Winnipeg Office: JAMES A. OVAS, Manager

WINNEPEG PRICES CURRENT

GROCERIES.

Prices to retail dealers for ordinary use with usual discounts for cash or sight bills.

Table listing various grocery items such as Apples, Canned Goods, Coffee, Cereals, Cured Meats, Cigarettes, Cured Fish, Dried Fruits, and California Evaporated Fruits with their respective prices.

Table listing various grocery items such as Prunes, Matches, Nuts, Syrups, Spices, and various oils and fats with their respective prices.

Table listing various grocery items such as Golden Plug, Royal Oak, Mather's Fruit Co., Soap, and various oils and fats with their respective prices.

Table listing various grocery items such as Cured Meats, Smoked Meats, and various oils and fats with their respective prices.

Railway and Traffic Matters. The C. P. R. has let a contract for extending its Northwestern branch from Yorkton westward.

Engineers of the Canadian Northern are examining the country between the company's Dauphin line and Kossburn district with a view to extending the road to the section. The proposed line would pass through the Hiding Mountains. The country is already settled to some extent. The estimated length of the spur is 80 miles.

Mackenzie & Mann, of the Canadian Northern Railway, are negotiating for the purchase of the Island Railway, run from Victoria to Nanaimo, and also for a charter for the extension of that line to the head of the strait that links to the westward. They would use it as a connection for the Canadian Northern which will reach the coast near northern British Columbia, probably near Seymour Narrows, across which a ferry would be run.

Movements of Business Men. A. S. Binn and J. M. Campbell, of the White & Co., wholesale dry goods merchants, this city, are now on the way to Europe on the regular spring trip.

W. M. Fisher, manager of The Canadian Permanent and Western Canada Mortgage Company at Winnipeg, arrived home from the east on Tuesday. While away Mr. Fisher attended the annual meeting of his company.

R. A. Willie has returned to Winnipeg from an extended visit in the east. Mr. Willie is having an investigation made as to the cause of the burning of the acetylene gas plant at Carberry, Man., in which he was largely interested.

John Russell, superintendent of loans for The Toronto General Trusts Company, returned this week from a business trip in which he visited Miramichi, Moose Jaw, Regina, Brandon and Portage la Prairie, visiting wherever he has been throughout the country, a most hopeful feeling prevailing notwithstanding the drawbacks experienced in the matter of getting grain out.

Vice-President Ward, of the Commercial Cable Company, spoke on the subject of wireless telegraphy at the annual meeting of the company, held in New York on the 4th inst. Some of his remarks were as follows: "The shareholders will no doubt express some expression of opinion from the officials of the company in respect to wireless telegraphy. While we do not intend to belittle the credit due to Mr. Marconi for the advancement he has made in that field, we have every confidence in the ability of submarine cables to maintain their commercial superiority in the present state of wireless telegraphy, even should it ever extend beyond its present experimental stage. Messages transmitted across the Atlantic, and answers received in two or three minutes. Should a message experience a delay of ten or fifteen minutes, it is not the fault of the object of the sender. No one has yet ever pretended that the speed with which messages may be transmitted by wireless apparatus even approaches the speed of the aerial or submarine wires."

TODHUNTER, MITCHELL & CO. Importers and Manufacturers High Grade Coffees High Grade Spices "Most Excellent" Cocoas "First Quality" Chocolates Baking Powders Flavouring Extracts, Etc.

TORONTO ONTARIO

ESTABLISHED 1874

20 YEARS' EXPERIENCE

## GARRUTHERS, BROCK, JOHNSTON & DRY

RENT  
COLLECTIONS  
&  
SPECIALTY

**Insurance,  
Financial,  
Real Estate  
Agents**

ESTATES MANAGED  
MONEY INVESTED

J. & J. TAYLOR SAFES AND VAULT  
DOORS.

481 MAIN STREET - WINNIPEG

# SEEDS

Merchants for 1902

PUSH THE

## Steele-Briggs Seeds

They have the four points for success  
in your seed business, viz.:

- 1st Always Reliable.
- 2nd Most Widely Advertised.
- 3rd Most Attractively Got Up.
- 4th Give a Good Round Profit.

See our big dally and weekly ads. They don't forget the merchant. Please return the compliment by pushing our seeds whenever possible, from box or catalogue.

We handle all seeds in all quantities and cheerfully answer any written or wire enquiries.

THE STEELE-BRIGGS SEED CO Ltd  
Toronto

JOHN W. PECK & CO.

MONTREAL, WINNIPEG  
VANCOUVER

Manufacturers of

**Clothing  
Furs  
Shirts**

Dealers in  
**Men's Furnishings,  
Hats, Caps**

## SEEDS SEEDS

The Northwest Seed and Trading Co., Ltd., have opened with a complete stock of

**Fresh Garden, Field  
and Flower Seeds**

Stock selected with a special view to the requirements of this market, our Mr. Chester having had over 20 years experience in the seed trade here.

**NORTHWEST SEED & TRADING CO., LTD.**  
505 Main St. Winnipeg.

PLEASE NOTIFY.

Subscribers to The Commercial are requested to notify the office of any irregularity in the receipt of their paper.

## W. R. TALBOT & CO.

239 PORTAGE AVENUE.

DEALERS IN

**Wall Papers  
Pictures and  
Frames**

All orders, either from the country or city, receive our most careful attention.

## Spring Lines

Now in stock, a full range of Spring Goods, Clothing, Furnishings, Small-wares, Fancy Goods, etc. We call attention especially to our HUBBER COATS, which are of good quality and marked low.

All orders will receive prompt attention.

**EASTERN CLOTHING HOUSE**

J. GENSER, Prop.

223 Alexander Ave. - Winnipeg.

## BICYCLES FOR 1902

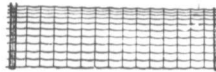
**Cleveland  
Brantford**



**Massey-Harris  
PERFECT**

If you have not secured an agency for one of the above lines write us to-day and add a Bicycle Department to your business. The Profits are Satisfactory and Sure.

**CANADA CYCLE & MOTOR CO. Ltd., Winnipeg**  
BICYCLES AND ACCESSORIES



## The Page

**COILED SPRING  
WOVEN WIRE FENCE**

When a bull or a runaway team run into a wire fence, or two-legged animals climb over it, how much benefit is a quarter inch cross wire? Isn't it a damage? Think of it. Buy the "Page" and get the best. No other wire like it. For further particulars apply to

**ROSS & ROSS**  
General Agents, Winnipeg.

## "5 in 1"

You are requested to call or send for samples of the "5 IN 1" LETTER ENVELOPE. SAVES LABOR, TIME AND EXPENSE. Used extensively by all Banks, Merchants, etc., throughout the Dominion. Used in the city by the PROVINCIAL GOVERNMENT, Alloway & Champion, A. J. Brown & Co., Forrester & Hatcher, E. Knight & Co., G. F. Shubloford, Dr. Leeming, Dr. English, Winnipeg Coal Co., and a host of others.

"5 in 1" LETTER ENVELOPE CO.  
TORONTO.

Manager for Winnipeg,  
LEWIS SAMUEL  
Telephone 112. 301 Main St.



**THE  
MAKING  
OF  
GOOD  
CIGARS**



Perfection is attained by experiment, experience and improved methods and materials.

This is as true in Cigar making as in other industries.

"FLOR DE TOM LEE" The "T. L."  
"MAGNIFICOS" "ROSA LINDA"  
"LEE'S PREMIER" "THE GORDON"

Are perfect Cigars, because behind them is experience and the best workmanship obtainable. They represent everything that capital and resources can put in them.

They're sold wherever GOOD Cigars are in demand? Ever try them?

"That good taste is Havana."

**WESTERN CIGAR FACTORY**

WINNIPEG

T. LEE, Prop.



## For School Purposes

we offer the trade a new line of Globes, Maps, Blackboard Cloth and Slating. Music Charts, Numerical Frames. Call and Table Belts, Crayons, &c.

For School Books, Scribbles and everything for scholars' use, try

**THE CONSOLIDATED STATIONERY CO. Ltd.**

MODERNOTT AVENUE, WINNIPEG

## New Manitoba Laws.

List of Bills passed by the Manitoba Legislature for 1902.

An Act to amend the Real Property Act.

An Act to amend the Surrogate's Act.

An Act respecting Mennonite village settlements.

An Act to amend the Municipal Act.

An Act to amend Game Protection Act.

An Act to amend bills of sales and chattel mortgages.

An Act to amend the County Courts Act.

An Act instituted the Winnipeg charter.

An Act to amend the Cemeteries Incorporation Act.

An Act to amend the Municipal Act.

An Act to incorporate the Standard Trusts Company.

An Act to authorize the Royal Trust Company to do business in the province of Manitoba.

An Act to incorporate the Occidental Fire Insurance Company.

An Act to amend Assessment Act.

An Act respecting assignments and preferences to insolvent persons.

An Act to amend the Distress Act.

An Act to amend the King's Bench Act.

An Act to incorporate the Suburban Rapid Transit Company.

An Act to incorporate the Universal Life Assurance and Annuity Company.

An Act to incorporate the Empire Funds and Mortgage Co., Limited.

An Act respecting the town of Morris.

An Act to amend the Municipal Boundaries Act.

An Act to amend the Corporations' Taxation Act.

An Act respecting certain guaranteed bonds of the C. N. R. Co.

An Act to amend chapter 34, 1, Edward VII, intitled an Act to Amend the Mutual Life Insurance Act.

An Act respecting the town of Nelson.

An Act to incorporate the Prudential Life Insurance Company.

An Act to incorporate the Winnipeg General Power Company.

An Act to incorporate the Souris cottage hospital.

An Act to amend the Manitoba Incorporation Act.

An Act to amend the Act respecting animals.

An Act to amend the Manitoba Trustee Act.

An Act to amend the Public Schools Act.

An Act respecting the prohibition of the sale of intoxicating liquors in Manitoba.

An Act to amend the Act of Incorporation of the Central Canada Fire Insurance Company.

An Act to confirm and enlarge the powers conferred on the Manitoba Electrical Company.

An Act to incorporate the Great Fall River Power Company.

An Act to incorporate the Carberry Electric Power Company.

An Act to amend the Act incorporating the Winnipeg and St. Andrew's Railway Company.

An Act to amend chapter 23 of 54 Victoria.

An Act to amend an Act for giving thresher a lien in certain cases.

An Act to amend the Mutual Life Insurance Act.

An Act to amend the Joint Tenancy Act.

An Act to amend the Educational Appointment Act.

An Act to amend the Municipal Act.

An Act respecting the town of Minnedosa.

An Act respecting certain debentures issued by the school district of Berlingford.

An Act further to amend the Municipal Act.

An Act respecting the Virden Northern Railway Company.

An Act to amend chapter 46, 1, Edward VII, being an Act to enable the government of Manitoba to lend limited amounts of money to municipalities in certain cases.

An Act to amend the Land Surveyors' Act.

An Act to amend an Act passed at the present session, intitled an Act to incorporate the Occidental Fire Insurance Company.

An Act to amend the Municipal Boundaries Act.

An Act respecting the construction

of certain lines of railway, and of the terms of the bonds of the Canadian Northern Railway Company received thereon.

An Act respecting the city of Brandon.

An Act to amend the Municipal Commissioners' Act.

An Act respecting the Horticultural Society.

An Act for granting further sums of money to His Majesty, required for defraying certain expenses of the civil government of the province for the fiscal year, ending December 31, 1902, and for other purposes connected with the public service.

## Growth of the Soo Industries.

Toonto, March 6.—A visitor to the parliament buildings to-day was Mr. F. H. Clergue, the well known Sault Ste. Marie capitalist. Mr. Clergue said to a reporter his visit was for the purpose of inviting the members of the government to visit the Soo and witness the process of steel making to be here, plant which, which, which, will be turning out 700 tons of steel rails per day by the end of the month. He said there are now 6,000 men employed in the syndicate's various works and the number would probably be increased to ten thousand by mid-summer. The surveys on the Manitoulin and North Shore railway had been completed and the line southward will be built from Meaford to Owen Sound at the south end and from Sudbury to Little Current at the north end. He also stated the line had been almost located from Sudbury to Sault Ste. Marie paralleling the Soo branch at a distance of from thirty to fifty miles to the north. Three thousand men were now at work on the Algona Central railway and he expected its whole length of 225 miles to be completed before the end of the season. Arrangements had been made for bringing out 3,000 Scandinavian settlers this spring, which he hoped to repeat annually for some years to come.

## Grain Exchange Membership Advanved.

At a regular general meeting of the Winnipeg Grain Exchange, sections No. 1 and No. 2 of the by-laws and regulations were amended. These sections refer to the entrance fees to the exchange. The price of a seat on the exchange now for the membership, owing to this amendment, movable by Mr. Fred Phillips, is raised from \$125 to \$250, and the associate member's fee from \$25 to \$50. Even though these fees have been doubled in price, the members believe that they are still very low, compared to other exchange fees. The Chicago members have to pay \$2,000 for a seat on their exchange, and Duluth \$1,000. The benefits to be derived from being a member of the Winnipeg exchange are now greater than they have ever been, owing to the growth of the business being conducted here. Among the benefits is that of having arbitration between dealers and producers, and there has never been an appeal from any decision yet made by the board of arbitrators.

## March Canadian Magazine.

There is plenty of food for thought and entertainment in the March Canadian Magazine. The famous Indian Jugernaut is described, and some of the popular fallacies concerning this festival are explained away. The making of pemmican, or sun-dried meat, is described in an illustrated Professor John Cox, of McGill, writes on commercial education from a new point of view, while the well-given views and main information concerning the movement for territorial autonomy. There are some usual bright stories and carefully edited commentaries.

The Cosmopolitan Magazine of New York is commencing its 11th year. The press of the ablest men of all countries to discuss questions relating to the highest interests of mankind.

An early opening of navigation is looked for. It is reported that part of the St. Mary's river, between Lake Superior and the head of Huron, is now clear of ice. This is good news to the grain feeding districts of the west.

## LEADING COMMERCIAL HOTELS

## WINNIPEG

## HOTEL LELAND.

Headquarters for commercial men.

## CITY HALL SQUARE.

## DRYDEN, ONT.

## DRYDEN HOTEL.

A. R. HUTCHINSON, Prop.

Headquarters for commercial and mining men and the general public.

## RAPID CITY.

## QUEEN'S HOTEL.

THOS. EVOY, Prop.

Headquarters for commercial travelers. Free bus mets all trains.

## BIRTLÉ

## ROSSBUSH HOTEL.

B. FENWICK, Prop.

Good accommodation; telephone connection with the station; sample rooms; inside closet. Livery in connection.

## TREHERNE

## LÉLAND HOTEL.

W. F. LEE, Prop.

First-class accommodation for commercial travelers.

## GLENBORO

## QUEEN'S HOTEL.

M. E. NEVINS, Prop.

Best hotel on the Glenboro branch. Three large and first-class sample rooms.

## NAPINKA

## HOTEL LELAND.

B. HALLONGQUIST, Prop.

First-class in every department. Sample rooms. Every convenience for the traveling public. Opposite C. P. R. depot.

## DELORAINÉ

## PALACE HOTEL.

LAIRD & MCGARVEY, Props.

New building, new furnishings, furnace heating, acetylene gas. First-class. Large sample rooms.

## MACGREGOR, MAN.

## THE STANLEY HOUSE.

E. WATSON, Prop.

First-class accommodation for travelers. Commodious sample rooms. Liv- ery and feed stable in connection. All kinds of teaming attended to.

## ELKHORN

## HOTEL MANITOBA.

W. J. DIXON, Prop.

New building, new furnishings, furnace heating, acetylene gas. First-class. Large sample rooms.

## FLEMING

## WINDSOR HOTEL.

W. GEO. CLEVERLY, Prop.

New management. Rates \$1.50. Renovated and re-furnished. Commodious sample rooms. Heated by hot air. Liv- ery and feed stable in connection. Inside closet.

## ROSTHERN

## OCCIDENTAL HOTEL.

H. A. McEWEN, Prop.

New house. Up-to-date appointments

## RED DEER, ALTA.

## ALBERTA HOTEL.

BEATTY & BRINDLE, Props.

C and E dining hall, good sample rooms and every accommodation for commercial travelers and the general public.

## WETASKIWIN, ALTA.

## CRITERION HOTEL.

F. M. HAMILTON, Proprietor.

New buildings, new furnishings, hot and cold baths, heated by furnace and lighted with gas; good sample rooms.

## STRATHCONA

## STRATHCONA HOUSE.

W. H. SHEPPARD, Prop.

First-class. Opposite depot.

## EDMONTON

## ALBERTA HOTEL.

JACKSON & GRIERSON, Proprietors. Sample rooms. Free bus. Livery in connection.

## MACLEOD

## MACLEOD HOTEL.

THOS. WILTON, Prop.

Good sample rooms and every accommodation for commercial travelers and the general public. Rates \$2.00 per day. Bus to and from all trains.

## PINCHER CREEK

## HOTEL ARLINGTON.

MITCHELL & DOBBIE, Props.

New buildings, new and commodious bedrooms, parlors, bathrooms and sample rooms. Newly furnished. Heated throughout by hot air, lighted by gas. Electric bells in every room. Cuisine second to none, and the best of wines, liquors and cigars in Alberta. Miss Mitchell, Matron.

## NEW WESTMINSTER, B. C.

## HOTEL COLONIAL.

J. E. INSLY, Proprietor.

Special attention given to commercial travelers. Charges moderate.

## VANCOUVER

## HOTEL LELAND.

R. DOWSWELL, Proprietor.

Refurnished and remodelled. Rates \$1.50 to \$2.00 per day. Long distance phone. One block from C. P. R. depot and Steamboat wharves. W. E. Grigor, Manager.

## VICTORIA

## HOTEL VERNON.

JAS. PATTERSON, Mgr.

Headquarters for commercial and business men. Free bus and sample rooms.

## KAMLOOPS

## GRAND PACIFIC HOTEL.

F. A. BARNHART, Proprietor.

The best hotel in Kamloops. Ample accommodation.

## GREENWOOD, B. C.

## IMPERIAL HOTEL.

GRAHAM & PARRY, Proprietors.

Headquarters for commercial travelers and all business men.

## PHOENIX, B. C.

## THE VICTORIA HOTEL.

B. C. Hotel Co., Ltd., B. TOMKINS, Mgr. Electric bells, electric lighted, furnace heated, finest liquors and cigars. Sample rooms.

**STATISTICAL WHEAT REPORT.**

**WHEAT IN CANADA.**

Stocks of wheat in Canada at principal points of accumulation are reported as follows:

Montreal	45,000
Toronto	45,000
Coleman	40,000
West Harbor, Ont.	25,000
Kingston	22,000
Fort William, Port Arthur and Keewatin	5,540,000
Winnipeg	27,000
Manitoba elevators	12,850,000
<b>Total March 1</b>	<b>19,203,000</b>
Total previous week	18,200,000
Total a year ago	5,372,000

**BRAIDSTREET'S REPORT OF STOCKS.**  
Total stocks in the United States and Canada, east of the Rocky Mountains, as reported by Braidstreet's March 1, were 43,325,000 bushels, against 48,823,000 bushels the previous year.

Total stocks in the United States and Canada a year ago were 50,704,000 bushels, according to Braidstreet's report. Stocks of wheat at Pacific coast ports on March 1 were 5,542,000 bushels.

**THE VISIBLE SUPPLY.**

The Chicago visible supply statement of stocks in the United States and Canada, east of the Rocky Mountains, for the week ending March 8, was 31,155,000 bushels, being a decrease of 828,000 bushels for the week. A year ago the visible supply was 62,863,000 bushels, or 31,708,000 bushels, three years ago, 29,477,000 bushels, four years ago, 23,823,000 bushels, five years ago, 42,768,000 bushels.

**STOCKS OF OATS AND CORN.**

The visible supply of oats in the United States and Canada, east of the Rocky Mountains, in 1902, was 10,820,000 bushels a year ago. The visible supply of corn in 1902, was 10,820,000 bushels a year ago, according to the Chicago statement.

**WORLD'S WHEAT STOCKS.**

Stocks of wheat in America and Europe and about for Europe Feb. 1 in each year for a series of years were as follows: Braidstreet's report:

1902	1,000,000,000
1901	1,000,000,000
1900	1,000,000,000
1899	1,000,000,000
1898	1,000,000,000
1897	1,000,000,000
1896	1,000,000,000
1895	1,000,000,000

**WHEAT MOVEMENT.**

The following table gives the receipts of wheat at the four principal United States grain wheat markets, from the beginning of the crop movement, Aug. 1, 1901, to date, compared with the same period of last year.

	This crop.	Last crop.
Minneapolis	56,570,216	56,820,849
St. Louis	8,260,880	6,127,230
Duluth	2,209,253	2,320,242
Chicago	33,677,279	33,955,829
<b>Total</b>	<b>101,277,828</b>	<b>101,844,902</b>

The following table gives the receipts of wheat at the four principal United States winter wheat markets, from the beginning of the crop movement, July 1, 1901, to date, compared with the same period of last year.

	This crop.	Last crop.
Toledo	6,102,898	5,774,866
St. Louis	15,322,856	17,928,773
Detroit	2,741,522	2,508,300
Kansas City	16,638,048	13,159,917
<b>Total</b>	<b>40,795,324</b>	<b>39,842,856</b>

**Winnipeg Prices a Year Ago.**

Following were Winnipeg prices this date last year:

- Wheat—No. 1 hard closed at 34c in store Fort William.
- Flour—Jobbing price per sack: Patent, \$2.10; best lakeland, \$1.86.
- Milwaukee—\$1.90 per ton; shorts, 45¢ per ton delivered.
- Oats—Carlots on track, Alberta #1 @ 41¢; Manitoba, 36¢.
- Barley—40¢/bu. per bushel.
- Corn—In car lots, 48¢/bu. per bushel of 56 lbs.
- Butter—Dairy, 15¢/lb. per lb.; creamery quality at 20¢.
- Cheese—10¢ to retail merchants.
- Yerkes feed for Manitoba fresh, less expense.
- Potatoes—Farmers' loads on the street, 40¢/cwt. per bushel.
- Dressed Meats—Beef, 14¢/lb. for city dressed; country, 5¢/lb. per lb., hog, 6¢/lb.
- Poultry—Dressed chicken, 7¢/lb.; ducks, dressed, 9¢; geese, 10¢; turkeys, dressed, 11¢/lb.
- Hams—Rabbits, 12¢ pair; jack rabbits, 25¢ each, and wild pigeons 20¢ per pair, pair.
- Hides—4½¢ for fresh stock, less 5½¢ tax.
- Wool—50¢/lb. for unwashed best.
- Sheep—Ewes—30¢ per lb.
- Baled Hay—\$7.68 per ton on car.
- Live Stock—Cattle 14¢/cwt.; sheep nominal; hogs, 14¢/cwt.

**Grain and Milling.**

A farmers' elevator will be built at Elva with a capacity of 40,000 bushels. A new elevator is being erected at Foxwarren by A. Laycock which is just about completed.

The Canadian Northern Railway Company has given official notice that its new elevator at Fort Arthur is now open to receive grain. The first load was put in on the 6th inst.

The Springfield Milling Company have concluded a contract with a machinery company to erect a grist mill at Duluth, Minn., to be ready for the crop of 1902. Work will be proceeded with at once.

It is reported from Washington that the Washburn-Crosby Company of Minneapolis has made application to have one of their mills bonded for grinding Manitoba wheat. This looks as though an attempt is actually to be made to grind Manitoba wheat in Minneapolis in bond. All the product of the wheat will have to be exported.

The machinery in the cleaning elevator at Emerson is being taken out. This elevator was used for cleaning wheat to be made to grind Manitoba wheat in Minneapolis in bond. All the product of the wheat will have to be exported.

The inspection returns show a large increase in the wheat movement this year. Wheat is being taken from Manitoba and eastern Saskatchewan to Duluth by two routes. From the western section the wheat is being taken out via the Soo line, and inspectors have been stationed at North Portal to inspect this wheat before it leaves Canadian territory. From the eastern districts the grain is going out via Duluth, at which point the Canadian Pacific Railway connects with the Great Northern. Inspectors have also been stationed at Cresta. The inspection office at Emerson has been closed, as no wheat is now going out by that route, since the Canadian Northern began to carry wheat to Fort Arthur.

The Canadian Pacific Railway is also moving a considerable quantity of grain eastward. An effort is being made to relieve the points where the blockade is felt most severely.

**Grain Inspection.**

During the week ending March 7 there were inspected 800 cars of grain, comprising the following:  
Wheat—No. 1 hard, 21 cars; 1 northern, 228 cars; 2 northern, 360 cars; 3 northern, 17 cars; No. 4, 40 cars; feed, 7 cars; No. 1 rejected, 1 car; No. 2 rejected, 4 cars; no grade, 10 cars, making a total inspection of wheat of 709 cars.  
Oats—No. 2 white, 35 cars; 2 mixed, 8 cars; feed, 24 cars; no grade, 1 car; total 88 cars.  
Barley—Feed, 1 car.  
Flax—No. 2, 2 cars.

During the same period a year ago the total number of cars inspected was 371, and two years ago 290 cars.

**Wheat Stocks on March 1.**

Wheat stocks in the United States and Canada declined but slightly during February. Braidstreet's report, because of a larger movement in or smaller exports from the United States, shows a decrease in the movement of Manitoba wheat was so large as a result in a record-breaking increase in Canadian stocks this season of the year. The movement of wheat to interior United States markets in February was really smaller than a year ago, and exports were only slightly below those of last year, but despite these, as against 7,400,000 bushels in February a year ago, as bearing on this, the fact might be noted that Manitoba exports to Ontario which stocks increased over 3,000,000 bushels this year. Following is the situation of American stocks on March 1 as compared with earlier periods of the present cereal year:

	East of Pacific	Totals U.S.
1901	Rockies	Coast & Canada
Jan. 1	1,225,000	12,535,000
Feb. 1	1,024,000	12,535,000
March 1	862,500	12,535,000
April 1	815,000	12,535,000
May 1	815,000	12,535,000
June 1	815,000	12,535,000
July 1	815,000	12,535,000
Aug. 1	815,000	12,535,000
Sept. 1	815,000	12,535,000
Oct. 1	815,000	12,535,000
Nov. 1	815,000	12,535,000
Dec. 1	815,000	12,535,000

1902	84,900,000	7,190,000	10,000,000
Feb. 1	88,800,000	6,520,000	9,200,000
March 1	84,315,000	5,420,000	8,825,000

	1902	1901	1900
Jan. 1	102,000,000	90,300,000	93,200,000
Feb. 1	96,320,000	90,940,000	96,200,000
March 1	86,250,000	87,500,000	91,000,000
April 1	82,500,000	85,800,000	88,300,000
May 1	81,500,000	85,800,000	88,300,000
June 1	81,500,000	85,800,000	88,300,000
July 1	81,500,000	85,800,000	88,300,000
Aug. 1	81,500,000	85,800,000	88,300,000
Sept. 1	81,500,000	85,800,000	88,300,000
Oct. 1	81,500,000	85,800,000	88,300,000
Nov. 1	81,500,000	85,800,000	88,300,000
Dec. 1	81,500,000	85,800,000	88,300,000

The situation of the United States and Canadian supplies on March 1, 1902, compares with preceding years as follows:

	East of Pacific	Totals U.S.	Rockies	Coast & Canada
March 1	84,315,000	5,420,000	82,825,000	1,495,000
1901	88,734,000	4,775,000	87,675,000	1,059,000
1900	85,270,000	7,810,000	93,348,000	1,078,000
1899	81,965,000	5,190,000	82,198,000	967,000
1898	67,020,000	4,425,000	49,445,000	4,580,000
1897	61,940,000	3,155,000	62,320,000	1,000,000
1896	64,250,000	4,296,000	39,831,000	24,419,000
1895	59,740,000	11,800,000	11,545,000	36,400,000
1894	58,250,000	9,525,000	10,865,000	35,890,000
1893	105,220,000	4,700,000	110,090,000	5,190,000

Stocks east of the Rockies, it will be seen, decreased 4,500,000 bushels during the month, while those on the Pacific coast declined 1,000,000 bushels. Compared with a year ago present American stocks are found to be about 2,200,000 bushels larger, but they are about 2,600,000 bushels smaller than on March 1 two years ago. With this exception the stocks are the largest held on March 1 since 1896.

Up to the beginning of last week the imperial war office has expended in food and forage for the South African war through the Canadian department of agriculture, the sum of over \$7,000,000.

**WANTED—SEVERAL PERSONS** of character and good reputation in each state (one in this county required) to represent and advertise and establish wealthy business houses of solid financial standing. Salary \$100 weekly, with expenses additional, all payable in cash each Wednesday direct from head office. Horse and carriage provided. No other references. Enquire self-addressed stamped envelope, Manager, 318 Carlton Building, Chicago.

**THE DOMINION ELEVATOR CO.**

LIMITED  
**GRAIN EXPORTERS**  
OFFICE: WINNIPEG  
GRAIN EXCHANGE WINNIPEG

**KIRKPATRICK & COOKSON**  
Montreal.

Consignments of Grain and Manitoba Produce solicited. Dressed Hogs wanted. F. O. B. Orders of Wheat, Barley, etc., requested.  
Established 1900, Manitoba Grain Code used.

**JAS CARRUTHERS & CO.**

**GRAIN EXPORTERS**  
MONTREAL TORONTO WINNIPEG

**The Northern Elevator Co.**

LIMITED.  
**GRAIN HEAD OFFICE WINNIPEG**  
MONTREAL TORONTO WINNIPEG  
BRANCH OFFICES: MONTREAL NEW YORK LONDON, ENG.



**WINNIPEG GRAIN AND PRODUCE EXCHANGE**  
C. A. YOUNG, President  
GEO. V. HASTINGS, CHAS. S. BELL, Vice-Presidents Sec'y: T. T. K.

LICENSED AND BONDED  
**THOMPSON, SONS & CO.**  
GRAIN COMMISSION MERCHANTS  
All grades of Wheat, Oats and Barley handled. Best prices; prompt returns. Liberal advances on B. L. Write for further information.

WINNIPEG.  
**H. D. METCALFE**  
GRAIN EXPORTER  
238 GRAIN EXCHANGE 112 STORE EXCHANGE  
WINNIPEG MONTREAL  
Direct connection with European markets.

**THE WINNIPEG ELEVATOR CO.**  
LIMITED  
**GRAIN EXPORTERS**  
OFFICE: GRAIN EXCHANGE, WINNIPEG

**ROBT. MUIR & CO.**  
GRAIN DEALERS AND MILLERS  
SHIPPERS OF WHEAT, OATS, BARLEY, RYE, FLOUR, BARN, SHORTS, CHOPS, ETC.  
Buy or sell on commission. Before buying or selling grain in car lots, write wire or for quotations. Advances made on consignments. Licensed and bonded.

WINNIPEG, MAN.

**M. McLAUGHLIN & CO.**  
ROYAL DOMINION MILLS, TORONTO.  
CAPACITY, 700 BBL. DAILY  
MILLERS OF  
No. 1 Manitoba Hard Wheat



Canadian Pacific Railway

The Quickest  
And Best Route

TO THE  
EAST & WEST

Train leaves for the East at 10.00  
Train leaves for the West at 10.30

THROUGH CARS TO  
Toronto, Montreal,  
Vancouver, Seattle.

Passengers comfort assured in  
through Tourist Cars to

TORONTO  
MONTREAL  
BOSTON  
VANCOUVER  
SEATTLE

Rates quoted for Tourists to  
CALIFORNIA, CHINA, JAPAN,  
around the World.

For full particulars apply at City  
Office, opposite Post Office, or at  
the Depot.

C. E. McPHERSON,  
Gen. Pass. Agt., Winnipeg

WANTED

Local agents or travelling salesmen for  
Manitoba and the Territories, to handle  
a complete line of nursery stock, fruit  
trees, ornamental trees, seed potatoes,  
small fruits, etc. We grow special lines  
of hardy Russian stock, adapted to cold  
districts. Sample catalogues, etc., supplied  
free. For terms apply now.

PELLHAM NURSERY COMPANY,  
Toronto, Ont.  
N. B. Special inducements to farmers  
who can only work part time at the busi-  
ness. Handsome catalogue free on appli-  
cation, which gives valuable information  
concerning ornamental and fruit stock.  
P. N. Co.

EVERYTHING IN

BROOMS  
BRUSHES  
BASKETS

From the cheapest that's good to the  
best that's made.

WALTER WOODS & CO

WHOLESALE WOODENWARE.

147 Bannatyne Ave., Winnipeg.



THROUGH TICKETS

TO ALL PORTS.

EAST, SOUTH AND WEST

CHEAP TICKETS TO CALIFORNIA

With through Tourist Car, every Wednes-  
day, via Portland and Shasta route.

OCEAN TICKETS.

On sale to Great Britain and the Conti-  
nent; also to Atlantic ports, etc.  
Trains leave Winnipeg daily at 1.45 p.  
m., from Canadian Northern Railway sta-  
tion. Water street first-class equipment,  
including Pullman and Dining Cars.

For further information call on nearest  
Canadian Northern Ticket Agent, or write  
CHAS. E. FERG.

Gen. Pass. & Ticket Agt., St. Paul,  
Minn., or—  
H. SWINFORD,  
Gen. Agt., 201 Main Street, Winnipeg.



ATLANTIC STEAMSHIP LINES.

Allan Line—From St. John.  
Numidian.....March 15  
Ionian.....March 22

Allan Line—From Halifax.  
Numidian.....March 17  
Ionian.....March 24

Beaver Line—From St. John.  
Lake Ontario.....March 16

Dominion Line—From Boston.  
Commonwealth.....March 20

Dominion Line—From Portland,  
California.....April 12

White Star Line—From New York.  
Germanic.....March 19  
Cymric.....March 26

Cunard Line—From New York.  
Ettruria.....March 22  
Campania.....March 29

Cunard Line—From Boston.  
Saxonia.....March 18  
Ultonia.....March 25

American Line—From New York.  
St. Louis.....March 19  
Philadelphia.....March 26

Red Star Line—From New York.  
Konington.....March 19  
Haverford.....March 26

Anchor Line—From New York.  
Furusiata.....March 29  
Aetoria.....April 12

RAVES—Cabin, \$50, \$55, \$60, \$70, \$80 and  
upwards. Second Cabin, \$35, \$37.50, \$40  
and upwards. Bergrage, \$24.50, \$25.50, \$26.

Passengers ticketed through to all ports  
in Great Britain and Ireland, and at spe-  
cially low rates to all parts of the Euro-  
pean continent. Special passage arranged  
from all ports. Apply to the nearest  
steamship or railway ticket agent, or to  
W. F. CUMMINGS, General Agent,  
Winnipeg, Man.

W. C. MACDONALD, Actuary. J. K. MACDONALD, Managing Director.

The Confederation  
Life Association

HEAD OFFICE  
TULUNTO

There are no conditions as to residence, e-  
travel or occupation in the Uncon-  
ditional Accumulative Policies issued by this Association. They guar-  
antee Extended Insurance, Paid-up Policies, and Cash Surrender values.

Manitoba, N. W. T. and B. C.—Winnipeg Office, 467 Main Street.  
CHARLES E. KERR, Sec.-Treasurer. DANIEL McDONALD, Manager.  
HENRY WORSELEY, City Agent.

Brandon Office.....F. W. GILL, Cashier.

RAW FURS

THERE'S MONEY IN IT!  
SHIP YOUR FURS

HIDES DEERSKINS  
AND SENECA

TO  
McMILLAN FUR & WOOL CO.  
MINNEAPOLIS, MINN.

High Prices. Prompt Returns.  
WRITE FOR PRICE CIRCULARS.

Hotel  
Leland

The Palace Family  
and Commercial Hotel

W. D. DOUGLAS  
MANAGER

City Hall Square, Winnipeg

RATES:  
\$2.00 to \$4.00  
PER DAY

SECOND TO NOTHING  
IN CANADA

MOYIE LUMBER COMPANY

Manufacturers and Dealers in

LUMBER LATH SHINGLES  
MOULDINGS  
CEDAR POSTS AND POLES

DRY KILN AND PLANERS IN CONNECTION

SAMUEL GRANT, Manager

MOYIE, B.C.

SEVEN PAPER MACHINES NOW RUNNING

We are therefore ready to book orders for

News, Tissues,  
Heavy Wrappings

Writings, Litho, Nos. 1, 2 and  
3 Book, Bristol Board,  
Cover Papers and  
Woodboard

THE E. B. EDDY CO. LIMITED

Hull, Montreal, Toronto, Quebec, Ottawa, Hamilton,  
Kingston, London, St. John, N.B., Halifax, Winnipeg, Victoria, Vancouver

T & B  
PLUG  
AND  
CUT  
TOBACCO

Try the new fours. They are getting a  
tire satisfaction. Pays the retailer a  
handsome profit.

THE GEO. E. TUCKETT & SON CO., LTD  
HAMILTON.

TERES & PERRARD, Agents, Winnipeg.

# Have You Bought

Your Wagons,  
Toy Carts,  
Velocipedes,  
Baby Carriages

We have a big assortment of these in stock. We are also carrying a large range of Hammocks. Catalogue, with best prices on application.  
We have just received a large range of Coronation Tablets Exercise and Scribbling Boards and Paperies. These are right up-to-date and you should have some.

**CLARK BROS. & CO. P. O. BOX 1240 WINNIPEG**

## THE IMPERIAL FRUIT AND PRODUCE COY

WHOLESALE  
We handle all kinds of green fruits and are prepared to fill your orders for as promptly.  
We also buy or handle on commission everything in the way of country produce at highest cash prices and lowest rates of commission.  
Settlements made promptly.  
880 Elgin Avenue, Winnipeg.

THE EVER INCREASING DEMAND FOR

# COCKSHUTT PLOWS

has necessitated larger manufacturing facilities from year to year.

We are now pleased to announce that during the present season extensive additions will be made to our Factory and Plant, and that our present facilities will be increased by 100 per cent.

HAVE YOU SECURED THE AGENCY FOR THE CELEBRATED COCKSHUTT PLOWS?  
If so, you are assured of the Spring Plow Trade in your Territory.

**COCKSHUTT PLOW COMPANY, LTD., WINNIPEG**  
Factory: BRANTFORD

*To those who have not been getting*

# OGILVIE'S ROLLED OATS

*We would suggest your Insisting on getting  
OGILVIE'S—and no other.*

*They are the best ever made, being so pronounced by all who  
are using them. Made from selected white oats.*

**DELICIOUS FLAVOR**

**FREE FROM HULLS**

# Grain Tickets

AND OTHER STATIONERY.

**SEND FOR SAMPLES**

**THE FRANKLIN PRESS Ltd. Opp. Grain Exchange, Winnipeg**

**"REFINED ALE"**  
(Which Sparkles Like Champagne)  
**"EXTRA STOUT"**  
and  
**"REDWOOD LAGER"**

Are what the people are using.

**WHY?**

BECAUSE they are always marketed in PRIME CONDITION.  
BECAUSE THEY ARE THOROUGHLY MATURED in wood.  
BECAUSE all ingredients are PURE.  
BECAUSE THE "UTMOST" CLEARNESS is observed in every process of manufacture.  
Order from your wholesale dealer or direct from Redwood factories, Winnipeg.

**E. L. DREWRY** Manufacturer and Importer, Winnipeg

## SADLER & HAWORTH

Tanners and Manufacturers of  
**Oak Leather Belting**  
Montreal and Toronto.

**JOHN A. CARRUTHERS**, Bellin Agent, 120 King Street, Winnipeg, Manitoba.

## WM. FERGUSON

WHOLESALE

**Wines, Liquors  
and Cigars**

814 STREET, BRANDON

## IMPORTANT . . .

My travellers are now on road with Spring and Fall Sales.

It will be to the interest of Merchants to defer buying until they see my Samples.

## THOS. CLEARHURST

BRACKVILLE, ONT.