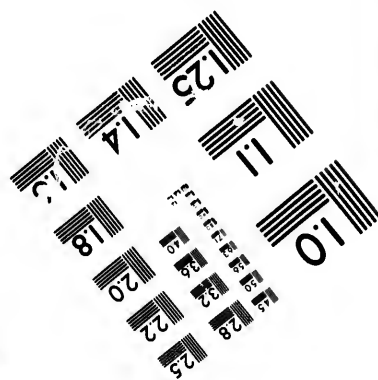
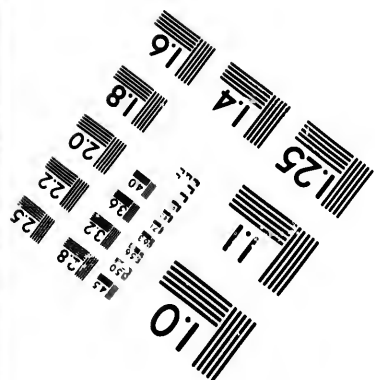
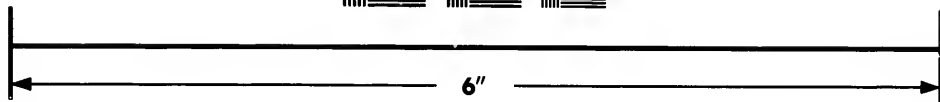
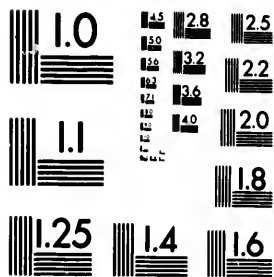


**IMAGE EVALUATION
TEST TARGET (MT-3)**



**Photographic
Sciences
Corporation**

23 WEST MAIN STREET
WEBSTER, N.Y. 14580
(716) 872-4503

0
15
16
18
20
22
25
28
32
36
40
44
48
52
56
60
64
68
72
76
80
84
88
92
96
100

**CIHM/ICMH
Microfiche
Series.**

**CIHM/ICMH
Collection de
microfiches.**



Canadian Institute for Historical Microproductions / Institut canadien de microreproductions historiques

11
10
01

© 1987

Technical and Bibliographic Notes/Notes techniques et bibliographiques

The Institute has attempted to obtain the best original copy available for filming. Features of this copy which may be bibliographically unique, which may alter any of the images in the reproduction, or which may significantly change the usual method of filming, are checked below.

L'Institut a microfilmé le meilleur exemplaire qu'il lui a été possible de se procurer. Les détails de cet exemplaire qui sont peut-être uniques du point de vue bibliographique, qui peuvent modifier une image reproduite, ou qui peuvent exiger une modification dans la méthode normale de filmage sont indiqués ci-dessous.

- Coloured covers/
Couverture de couleur
- Covers damaged/
Couverture endommagée
- Covers restored and/or laminated/
Couverture restaurée et/ou pelliculée
- Cover title missing/
Le titre de couverture manque
- Coloured maps/
Cartes géographiques en couleur
- Coloured ink (i.e. other than blue or black)/
Encre de couleur (i.e. autre que bleue ou noire)
- Coloured plates and/or illustrations/
Planches et/ou illustrations en couleur
- Bound with other material/
Relié avec d'autres documents
- Tight binding may cause shadows or distortion
along interior margin/
La reliure serrée peut causer de l'ombre ou de la
distorsion le long de la marge intérieure
- Blank leaves added during restoration may
appear within the text. Whenever possible, these
have been omitted from filming/
Il se peut que certaines pages blanches ajoutées
lors d'une restauration apparaissent dans le texte,
mais, lorsque cela était possible, ces pages n'ont
pas été filmées.
- Additional comments:/
Commentaires supplémentaires:

- Coloured pages/
Pages de couleur
- Pages damaged/
Pages endommagées
- Pages restored and/or laminated/
Pages restaurées et/ou pelliculées
- Pages discoloured, stained or foxed/
Pages décolorées, tachetées ou piquées
- Pages detached/
Pages détachées
- Showthrough/
Transparence
- Quality of print varies/
Qualité inégale de l'impression
- Includes supplementary material/
Comprend du matériel supplémentaire
- Only edition available/
Seule édition disponible
- Pages wholly or partially obscured by errata
slips, tissues, etc., have been refilmed to
ensure the best possible image/
Les pages totalement ou partiellement
obscurcies par un feuillet d'errata, une pelure,
etc., ont été filmées à nouveau de façon à
obtenir la meilleure image possible.

This item is filmed at the reduction ratio checked below/
Ce document est filmé au taux de réduction indiqué ci-dessous.

10X	14X	18X	22X	26X	30X
<input type="checkbox"/>	<input type="checkbox"/>	<input checked="" type="checkbox"/>	<input type="checkbox"/>	<input type="checkbox"/>	<input type="checkbox"/>
12X	16X	20X	24X	28X	32X

The copy filmed here has been reproduced thanks to the generosity of:

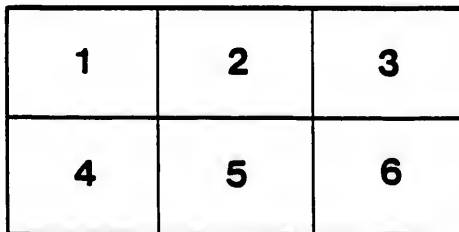
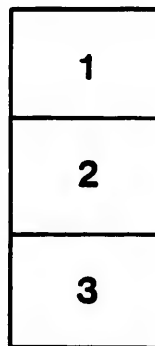
Library of Parliament and the
National Library of Canada.

The images appearing here are the best quality possible considering the condition and legibility of the original copy and in keeping with the filming contract specifications.

Original copies in printed paper covers are filmed beginning with the front cover and ending on the last page with a printed or illustrated impression, or the back cover when appropriate. All other original copies are filmed beginning on the first page with a printed or illustrated impression, and ending on the last page with a printed or illustrated impression.

The last recorded frame on each microfiche shall contain the symbol \rightarrow (meaning "CONTINUED"), or the symbol ∇ (meaning "END"), whichever applies.

Maps, plates, charts, etc., may be filmed at different reduction ratios. Those too large to be entirely included in one exposure are filmed beginning in the upper left hand corner, left to right and top to bottom, as many frames as required. The following diagrams illustrate the method:



L'exemplaire filmé fut reproduit grâce à la générosité de:

La Bibliothèque du Parlement et la
Bibliothèque nationale du Canada.

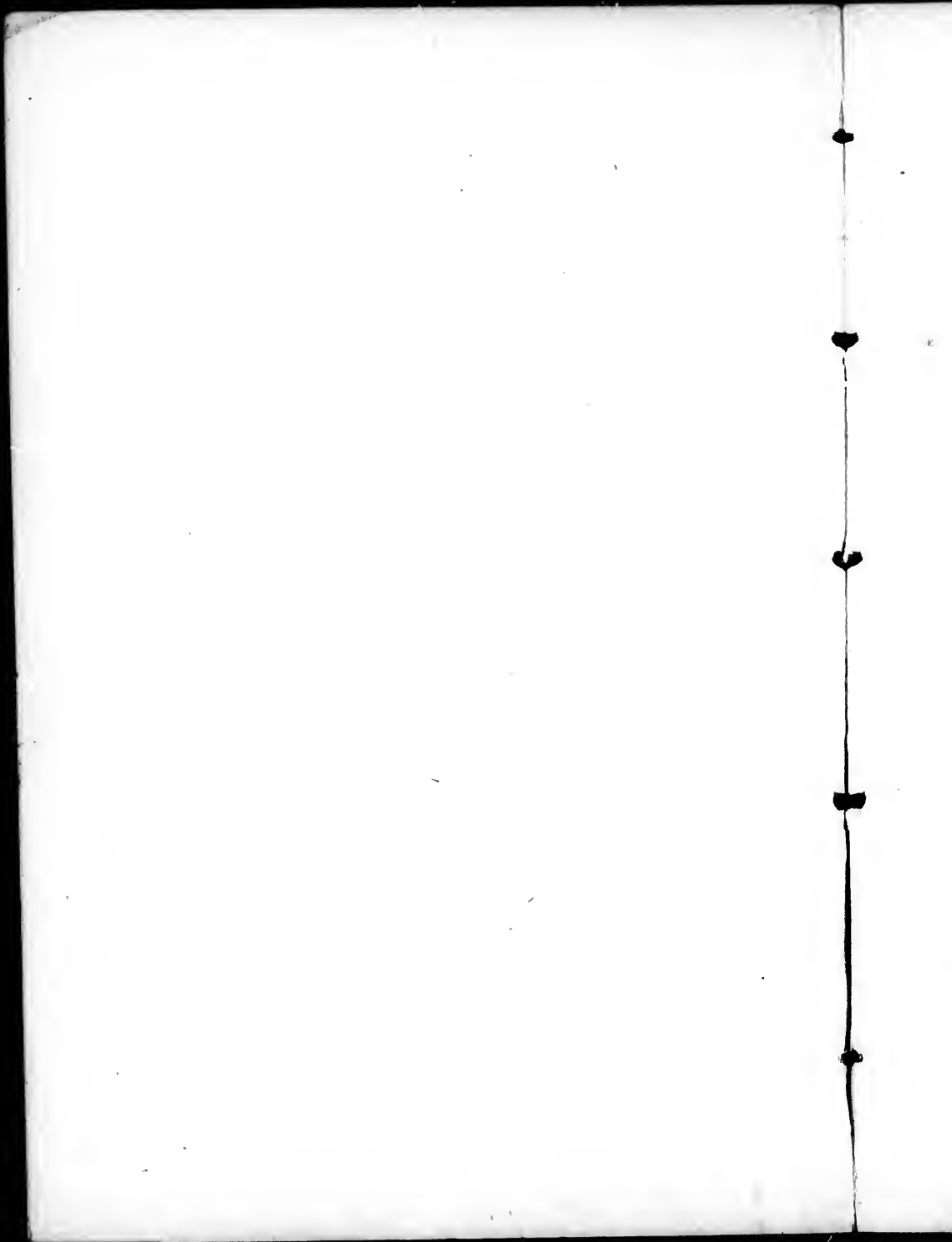
Les images suivantes ont été reproduites avec le plus grand soin, compte tenu de la condition et de la netteté de l'exemplaire filmé, et en conformité avec les conditions du contrat de filmage.

Les exemplaires originaux dont la couverture en papier est imprimée sont filmés en commençant par le premier plat et en terminant soit par la dernière page qui comporte une empreinte d'impression ou d'illustration, soit par le second plat, selon le cas. Tous les autres exemplaires originaux sont filmés en commençant par la première page qui comporte une empreinte d'impression ou d'illustration et en terminant par la dernière page qui comporte une telle empreinte.

Un des symboles suivants apparaîtra sur la dernière image de chaque microfiche, selon le cas: le symbole \rightarrow signifie "A SUIVRE", le symbole ∇ signifie "FIN".

Les cartes, planches, tableaux, etc., peuvent être filmés à des taux de réduction différents. Lorsque le document est trop grand pour être reproduit en un seul cliché, il est filmé à partir de l'angle supérieur gauche, de gauche à droite, et de haut en bas, en prenant le nombre d'images nécessaire. Les diagrammes suivants illustrent la méthode.





RULES AND REGULATIONS

OF THE

New City Gas Company

OF MONTREAL,

FOR THE

INTRODUCTION OF GAS,

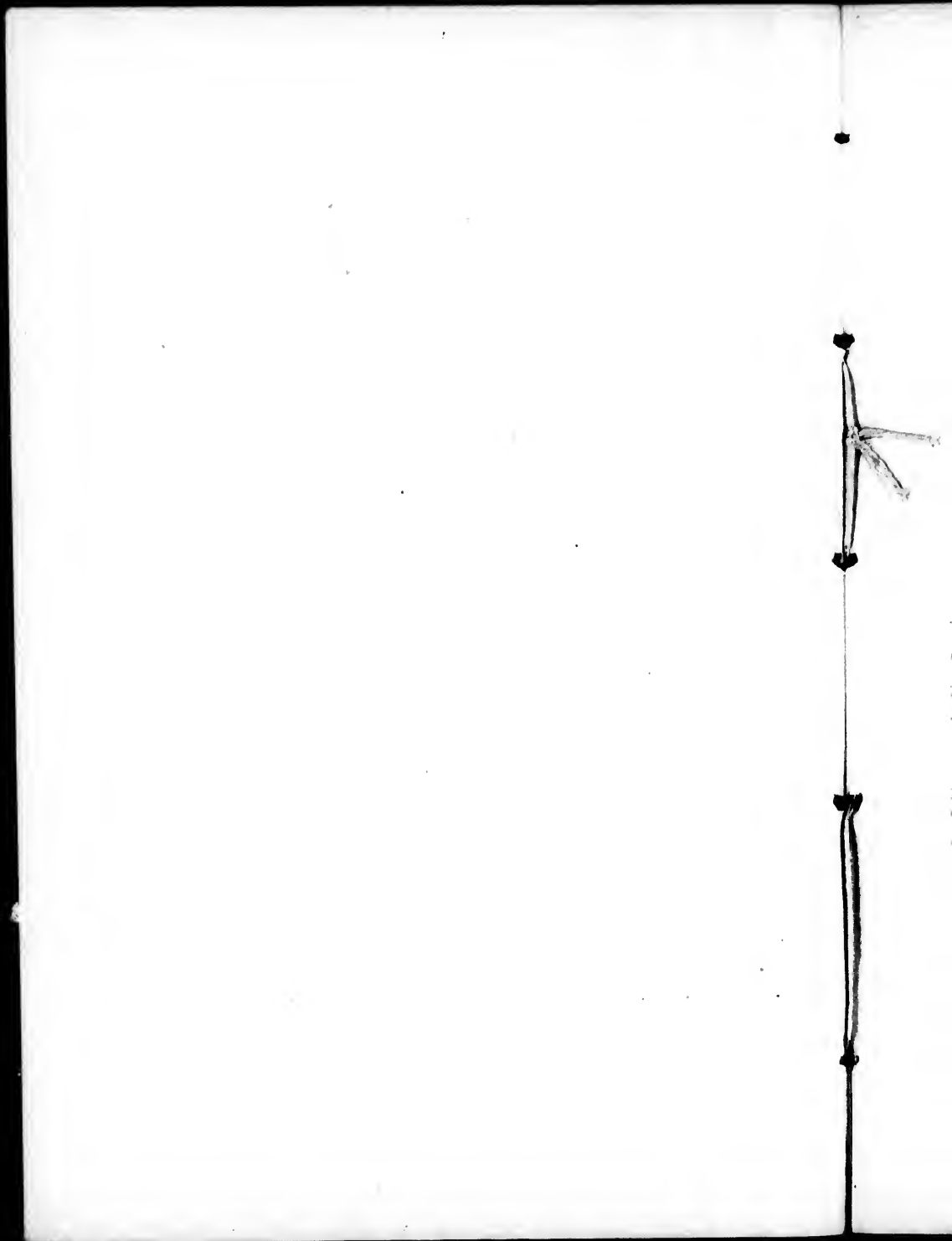
TOGETHER WITH THE

Terms upon which Consumers will be Supplied.

MONTREAL :

“HERALD” PRINTING AND PUBLISHING CO

1878.



RULES AND REGULATIONS

FOR THE

SUPPLY OF GAS.

NOTICE.—This Company are prepared to supply Gas, where their mains are laid, subject to the following Rules and Regulations, and consumers are required to conform to them accordingly :—

1. All applications for a supply of Gas must be made in person, or by an agent, at the office of the Company, and the applicant must accede to these Rules and sign an agreement with the Company to that effect.

2. Gas will be supplied by meter only, the register of which shall be *prima facie* evidence of the quantity of Gas consumed. Should the meter cease to register, or become otherwise defective, it shall, upon discovery thereof, be changed, and the quantity of Gas consumed shall be computed from the registration of another meter, or by reference to the consumption of a corresponding period, at the discretion of the Company.

3. The meters will be provided, and kept in repair by the Company, at the following rentals, payable quarterly :

2 and 3-light meters,	\$0.40	per	qr.
5 "	"	"	0.50 "
10 "	"	"	0.60 "
20 "	"	"	0.90 "
30 "	"	"	1.10 "
45 "	"	"	1.60 "
50 "	"	"	1.80 "
60 "	"	"	2.20 "
80 "	"	"	2.80 "
100 "	"	"	} 3.50 "
And upwards			

The Company exercise the right to determine the position of the meter, and require the consumer to screw a suitable brass stop-cock on the end of the street service pipe.

4. The meters shall be inspected quarterly, or half-quarterly if the Company deem it expedient, and the accounts will be furnished quarterly.

The price of Gas shall, until further notice, be \$3 00 per thousand cubic feet in ordinary localities, but should application be made for supplying Gas on distant streets or roads in which there are but few consumers, or in localities difficult and expensive to lay pipes, the price shall be such as to afford a reasonable return for the outlay of capital, allowance being made for condensation, extra service, and other incidentals as estimated by this Company, from which there will be a discount of 50 cents per 1,000 cubic feet, on all bills (meter rent not included) if paid at the office of the Company within fourteen days after the expiration of each quarter, *i e*, on the fourteenth of February, May, August, and November, respectively, in each year; but the

Company reserve to themselves the right to have the accounts settled monthly, if they deem it requisite.

As the discount is made to insure prompt payment, none will be allowed, under any circumstances, on Gas bills remaining unpaid after the fourteenth of the months above named, or such other days as the Company may appoint; and, in default of such payments, the supply of Gas will be discontinued until all arrears are paid.

5. The Company may, if they think fit, require security for the payment of the Gas expected to be consumed, or the deposit with them of a sum (according to the number of lights to be supplied) sufficient to secure them against loss.

6. Service pipes will be laid by the Company from the main to the inside face of the walls of buildings situated on the line of street or road in which the main lies, free of expense; but, where the pipe has to extend beyond the boundary of such street or road, the extra length will be charged to the consumer.

7. The Company reserve to themselves the right, at any time, to cut off the communication of the service pipe, if necessary to do so, to protect themselves against loss by fraud or otherwise.

8. The junction or connection with the street service pipe of this Company; the laying and fixing of the pipes, tubings, fittings and stop-cocks beyond the said service pipe, may be executed by any competent gas-fitter the consumer may choose to employ; but such work shall be done at the exclusive cost and risk of the consumer, and the Company shall not be held responsible for the results of any defects in such materials or workmanship, or for accidents of any kind that may take place in connection therewith.

9. Immediate notice should be given at the office of the Company, whenever there are indications of a defective supply of Gas. In winter the supply is liable to be stopped by severe weather ; and should any defect arise from the neglect of the consumer in not protecting the pipes, tubings, fittings and meters from the action of the cold, the expense of restoring the same to good working order shall be borne by the consumer.

10. When there is any smell of Gas the stop-cock must be at once closed by the consumer, who shall forthwith cause the defect to be rectified, if in the interior pipes or fittings. If it be found that the escape is from pipes outside the premises, notice thereof must be immediately sent to the office of the Company. In cases of such escape of Gas, doors and windows must be opened for the admission of fresh air, and under no circumstances shall a light be allowed near the escape, as a dangerous explosion might result. Consumers will particularly note this warning, as also the special agreement in which the Gas is supplied, that this Company shall be held harmless and free from responsibility in all cases of accidents from explosion or otherwise arising from any defect in the pipes, tubings, fittings, stop-cocks or meters, beyond the end of their service pipe in the wall of the building, and at which point it is agreed the responsibility of the Company shall terminate.

11. The Company's officers or servants shall have the right of free access, at all times, into any premises supplied with Gas, to ascertain the quantity of Gas consumed, examine the meter or remove the same.

12. Consumers intending to remove from their premises shall give, at least, three days' notice in writing, to be sent to the Company's office, to enable the Gas to be turned off and the meter removed. The

registered consumer will be held liable for the Gas supplied and the rent of the meter until such notice be given.

13. In case of the turning off of the Gas, disconnection of the pipes, or removal of the meter, in consequence of non-payment of the Gas account, a charge of one dollar will be made to pay for turning on the Gas again and reconnecting the meter.

14. Any proprietor of building or consumer of Gas will be furnished with a copy of these Rules, without charge, on application at the office of the Company.

15. The former Rules and Regulations were repealed, and the foregoing duly approved and adopted by the Directors, at the Special Meeting, held at the Company's office, on Wednesday, the 23rd April, 1873.

office of
s of a
pply is
uld any
in not
rs from
ng the
by the

op-cock
no shall
in the
at the
thereof
mpany.
indows
ir, and
ed near
result.
as also
pplyed,
nd free
s from
t in the
rs, be-
of the
respon-

l have
remises
of Gas
ne.

their
vice in
enable
The

SCHEDULE A.

In order to secure an uninterrupted flow of Gas, it is deemed proper to require adherence to the following Tables :

Size of Tubing.	Greatest Length Allowed.	Greatest Number of Burners.
$\frac{1}{4}$ inch	6 feet.....	1
$\frac{3}{8}$ "	20 "	3
$\frac{1}{2}$ "	30 "	6
$\frac{3}{4}$ "	40 "	12
$\frac{7}{8}$ "	50 "	20
1 "	70 "	35
$1\frac{1}{4}$ "	100 "	60
$1\frac{1}{2}$ "	150 "	100
2 "	200 "	200
$2\frac{1}{2}$ "	300 "	300
3 "	450 "	450
4 "	600 "	500

SCHEDULE B.

METERS.

Size of Meters.	Greatest Number of Burners.
3 Light	5
5 "	10
10 "	20
20 "	40
30 "	60
45 "	100
100 "	250

, it is
ollow-

umber s.

umber rs.

