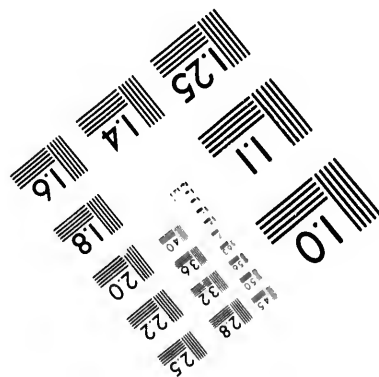
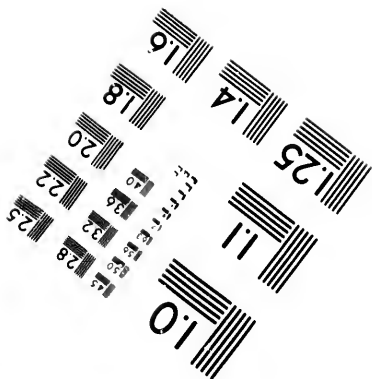
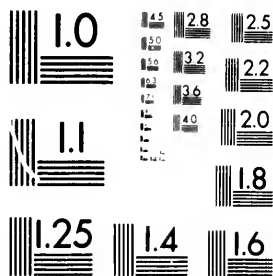


**IMAGE EVALUATION
TEST TARGET (MT-3)**



45
28
32
25
22
20

**CIHM/ICMH
Microfiche
Series.**

**CIHM/ICMH
Collection de
microfiches.**

10



Canadian Institute for Historical Microreproductions

Institut canadien de microreproductions historiques

1980

Technical and Bibliographic Notes/Notes techniques et bibliographiques

The Institute has attempted to obtain the best original copy available for filming. Features of this copy which may be bibliographically unique, which may alter any of the images in the reproduction, or which may significantly change the usual method of filming, are checked below.

L'Institut a microfilmé le meilleur exemplaire qu'il lui a été possible de se procurer. Les détails de cet exemplaire qui sont peut-être uniques du point de vue bibliographique, qui peuvent modifier une image reproduite, ou qui peuvent exiger une modification dans la méthode normale de filmage sont indiqués ci-dessous.

- Coloured covers/
Couverture de couleur
- Covers damaged/
Couverture endommagée
- Covers restored and/or laminated/
Couverture restaurée et/ou pelliculée
- Cover title missing/
Le titre de couverture manque
- Coloured maps/
Cartes géographiques en couleur
- Coloured ink (i.e. other than blue or black)/
Encre de couleur (i.e. autre que bleue ou noire)
- Coloured plates and/or illustrations/
Planches et/ou illustrations en couleur
- Bound with other material/
Relié avec d'autres documents
- Tight binding may cause shadows or distortion
along interior margin/
La reliure serrée peut causer de l'ombre ou de la
distortion le long de la marge intérieure
- Blank leaves added during restoration may
appear within the text. Whenever possible, these
have been omitted from filming/
Il se peut que certaines pages blanches ajoutées
lors d'une restauration apparaissent dans le texte,
mais, lorsque cela était possible, ces pages n'ont
pas été filmées.
- Additional comments:/
Commentaires supplémentaires:

- Coloured pages/
Pages de couleur
- Pages damaged/
Pages endommagées
- Pages restored and/or laminated/
Pages restaurées et/ou pelliculées
- Pages discoloured, stained or foxed/
Pages décolorées, tachetées ou piquées
- Pages detached/
Pages détachées
- Showthrough/
Transparence
- Quality of print varies/
Qualité inégale de l'impression
- Includes supplementary material/
Comprend du matériel supplémentaire
- Only edition available/
Seule édition disponible
- Pages wholly or partially obscured by errata
slips, tissues, etc., have been refilmed to
ensure the best possible image/
Les pages totalement ou partiellement
obscurcies par un feuillet d'errata, une pelure,
etc., ont été filmées à nouveau de façon à
obtenir la meilleure image possible.

This item is filmed at the reduction ratio checked below/
Ce document est filmé au taux de réduction indiqué ci-dessous.

10X	14X	18X	22X	26X	30X
<input type="checkbox"/>	<input type="checkbox"/>	<input checked="" type="checkbox"/>	<input type="checkbox"/>	<input type="checkbox"/>	<input type="checkbox"/>
12X	16X	20X	24X	28X	32X

The copy filmed here has been reproduced thanks to the generosity of:

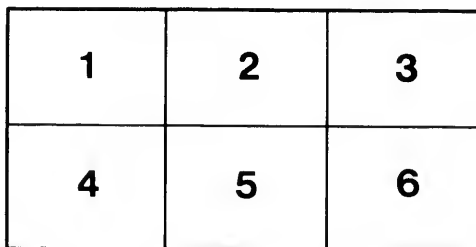
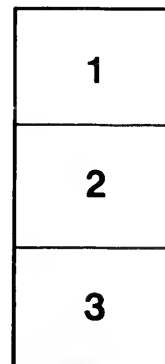
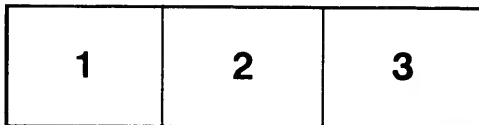
National Library of Canada

The images appearing here are the best quality possible considering the condition and legibility of the original copy and in keeping with the filming contract specifications.

Original copies in printed paper covers are filmed beginning with the front cover and ending on the last page with a printed or illustrated impression, or the back cover when appropriate. All other original copies are filmed beginning on the first page with a printed or illustrated impression, and ending on the last page with a printed or illustrated impression.

The last recorded frame on each microfiche shall contain the symbol \rightarrow (meaning "CONTINUED"), or the symbol ∇ (meaning "END"), whichever applies.

Maps, plates, charts, etc., may be filmed at different reduction ratios. Those too large to be entirely included in one exposure are filmed beginning in the upper left hand corner, left to right and top to bottom, as many frames as required. The following diagrams illustrate the method:



L'exemplaire filmé fut reproduit grâce à la générosité de:

Bibliothèque nationale du Canada

Les images suivantes ont été reproduites avec le plus grand soin, compte tenu de la condition et de la netteté de l'exemplaire filmé, et en conformité avec les conditions du contrat de filmage.

Les exemplaires originaux dont la couverture en papier est imprimée sont filmés en commençant par le premier plat et en terminant soit par la dernière page qui comporte une empreinte d'impression ou d'illustration, soit par le second plat, selon le cas. Tous les autres exemplaires originaux sont filmés en commençant par la première page qui comporte une empreinte d'impression ou d'illustration et en terminant par la dernière page qui comporte une telle empreinte.

Un des symboles suivants apparaîtra sur la dernière image de chaque microfiche, selon le cas: le symbole \rightarrow signifie "A SUIVRE", le symbole ∇ signifie "FIN".

Les cartes, planches, tableaux, etc., peuvent être filmés à des taux de réduction différents. Lorsque le document est trop grand pour être reproduit en un seul cliché, il est filmé à partir de l'angle supérieur gauche, de gauche à droite, et de haut en bas, en prenant le nombre d'images nécessaire. Les diagrammes suivants illustrent la méthode.

WITH THE AUTHORITY OF
POLITE COMPLIMENTS
Professor Robert Bell, F.G.S.
92
Montreal.

1860-1872.

THE GOLD YIELD

OF

NOVA-SCOTIA.

BY

A. HEATHERINGTON.

Compiled from Corrected Official Records.

"Mineral Resources are but one factor, which must be joined with labor and intelligence to make the product wealth."—ROSSITER W. RAYMOND, Ph. D., *U. S. Commissioner of Mining Statistics.* (*The Mines of the West.*)

"Reliable Statistics cannot fail to result beneficially to the country and government."—J. ROSS BROWNE, *U. S. Special Commissioner.* (*Report on the Mineral Resources of the United States.*)

"The history of modern gold discoveries presents itself to us under one uniform aspect; a long preliminary working, and then a sudden publication and recognition."—J. CALVERT. (*Gold Rocks of Great Britain and Ireland.*)

Eight Year—Fiftieth Thousand.

LONDON :

"MINING JOURNAL" OFFICE, 26 FLEET STREET, E. C.

TRUEBNER & CO., 60 PATERNOSTER ROW, E. C.

1873.

Nova Scotia Printing Co., Corner Sackville and Granville Sts., Halifax.

B. G. GRAY,

Barrister and Attorney-at-Law,

NOTARY, COMMISSIONER, &c., &c., &c.

HESSLEIN BUILDING, HOLLIS STREET,

HALIFAX, NOVA SCOTIA.

—:0:—

Mr. GRAY attends to legal business of all kinds in the DOMINION OF CANADA and in the UNITED STATES.

A. HEATHERINGTON,

Mine Agent,

Mail Address, Box 323, G.P.O.; Office, Somerset House,

HALIFAX, NOVA SCOTIA.

—:0:—

A Register kept of every description of Mineral Lands, and Mining Shares for sale.

Properties viewed and reported on—and their purchase or sale, when required, negotiated for a moderate commission.

The services of Explorers, Overseers, &c., engaged for Mine Owners.

Maps, Diagrams, Statistics, and useful information regarding each District supplied.

Returns made for absent Proprietors.

Mr. HEATHERINGTON'S Statistical Review or Chart of the Gold Yield of Nova Scotia has been approved of and largely circulated by the Mines Department and the Paris Exhibition Committee, besides being favorably mentioned by the leading Mining Journals. His returns and tables of comparison, therefore, may always be relied upon as accurate and substantially agreeing with the official records.

A GUIDE TO THE GOLD FIELDS published by Mr. H., and procurable of all Booksellers will be found extremely useful to Tourists, Miners and Investors.

Can.

Hennington,

Pam.

Albany.

1860-72.

GOLD YIELD
FROM THE FIRST WORKING OF
COMPILED BY

N. B.—These Tables are approved by the GEOLOGICAL SURVEY OFFICE OF CANADA, AS A STANDARD OF REFERENCE.

YEAR AND DISTRICT.	YIELD OF GOLD.					
	TOTAL.		SOURCES.		PER 2240 LBS. OF QUARTZ.	PER 1 TON. OF QUARTZ.
	Oz. dwt. gr.	Oz. dwt. gr.	FROM QUARTZ.	NATIVE.		
1862	2,023 0 0	2,023 0 0	2 12 15	56 39
3	3,204 14 12	3,276 14 12	28 0 0	1 1 6	22.76
4	3,419 14 20	3,400 11 20	10 0 0	1 8 14	30.61
5	3,421 1 21	3,421 1 21	1 10 13	32.71
6	5,829 13 8	5,829 13 8	2 5 18	49.03
7	9,463 18 0	9,463 18 0	1 8 17	36.73
8	7,070 0 5	7,070 0 5	0 15 23	17.73
9	5,546 11 16	5,546 11 16	0 10 19	11.57
70	7,134 4 0	7,134 4 0	0 14 9	15.52
1	6,579 19 7	6,579 19 7	0 10 15	11.37
1872	4,188 9 21	4,188 9 21	0 17 21	19.17
1862	1,507 0 0	1,507 0 0	0 9 0	9.66
3	2,380 6 3	2,380 6 3	0 7 21	8.45
4	6,410 4 22	6,410 4 22	0 15 13	16.65
5	14,404 4 9	14,404 4 9	1 5 18	27.61
6	8,612 17 11	8,612 17 11	0 11 12	12.34
7	3,912 5 2	3,942 5 2	0 8 10	9.09
8	2,387 8 22	2,387 8 22	0 8 9	8.99
9	1,591 14 10	1,591 14 10	0 0 0	0.54
70	811 3 21	811 3 21	0 6 22	7.43
1	1,427 18 12	1,427 18 12	0 11 13	12.36
1872	1,047 17 0	1,047 17 0	0 13 7	14.25
1862	308 0 0	308 0 0	2 0 8	43.22
3	785 7 7	785 7 7	1 10 13	32.78
4	1,172 6 5	1,172 6 5	1 1 9	22.82
5	1,068 10 18	1,068 10 18	1 4 9	26.16
6	6,423 15 11	6,423 15 11	1 3 3	25.68
7	7,904 19 2	7,904 19 2	1 4 12	26.26
8	3,373 14 9	3,373 14 9	0 12 14	13.50
9	3,097 15 7	3,097 15 7	0 9 13	10.24
70	1,171 18 11	1,171 18 11	0 8 2	8.67
1	1,179 17 16	1,179 17 16	0 10 17	11.49
1872	323 3 8	323 3 8	0 8 11	9.07
1862	1,688 0 0	1,688 0 0	2 2 23	46.06
3	3,718 2 19	3,718 2 19	1 2 20	24.48
4	4,033 3 7	4,033 3 7	1 1 20	23.40
5	2,200 5 14	2,200 5 14	0 12 23 14	17.77
6	1,012 8 4	1,012 8 4	0 12 1	12.91
7	845 18 14	845 18 14	0 11 8	12.15
8	1,248 6 3	1,248 6 3	0 9 12	10.19
9	719 8 19	719 8 19	0 5 21	6.33
70	914 15 14	914 15 14	0 9 16	9.31
1	1,538 6 16	1,538 6 16	0 11 15	12.61
1872	2,572 10 18	2,572 10 18	1 4 23	26.73
1863	366 14 16	366 14 16	2 18 17	62.91
4	1,052 19 14	1,052 19 14	1 2 3	46.34
5	902 12 23	902 12 23	1 12 13	35.19
6	496 15 10	496 15 10	1 1 9	21.17
7	436 15 16	436 15 16	2 0 2	42.87
8	584 14 22	584 14 22	1 17 10	40.69
9	805 13 14	805 13 14	1 11 12	33.78
70	3,831 9 5	3,831 9 5	4 13 15	100.34
1	3,152 8 15	3,152 8 15	4 3 5	89.14
1872	1,793 10 6	1,793 10 6	2 18 19	63.02
1862	51 0 0	51 0 0	0 13 14	14.57
3	1,223 3 21	1,223 3 21	1 6 17	28.61
4	1,750 5 12	1,750 5 12	0 17 12	18.76
5	1,126 11 20	1,126 11 20	0 11 7	12.09
6	956 12 20	956 12 20	1 2 4	23.76
7	1,100 3 14	1,100 3 14	1 8 8	20.43
8	719 0 4	719 0 4	0 15 21	17.05
9	1,394 16 0	1,394 16 0	0 18 0	19.25
70	2,051 15 3	2,051 15 3	0 17 9	18.62
1	1,718 12 12	1,718 12 12	1 8 0	30.01
1872	1,014 11 10	1,014 11 10	1 8 15	30.70
1862	865 0 0	865 0 0	1 7 10	29.36
3	494 8 21	494 8 21	0 16 22	18.16
4	607 7 8	582 2 20	25 4 12	0 18 16	20.02
5	644 7 13	548 2 1	96 5 12	0 19 5	20.51
6	296 5 21	268 6 21	27 19 0	0 7 14	8.12
7	651 14 7	633 11 7	58 3 0	0 19 14	20.96
8	921 8 9	920 13 9	0 15 0	1 8 10	30.45
9	1,192 3 10	1,192 3 10	0 15 21	17.05
70	1,814 2 10	1,814 2 10	0 18 14	19.93
1	2,093 0 7	2,093 0 7	1 16 1	17.12
1872	829 8 15	829 8 15	0 11 10	12.27
1862	397 0 0	397 0 0	2 0 5	43.11
3	1,587 13 12	1,587 13 12	3 7 13	72.39
4	1,510 4 21	1,510 4 21	2 13 3	56.95
5	1,696 6 2	1,696 6 2	1 16 12	39.12
6	1,254 17 0	1,254 17 0	0 12 11	13.36
7	1,266 16 15	1,266 16 15	1 16 6	38.80
8	673 5 17	655 2 17	18 0 0	0 19 14	20.96
9	927 0 13	927 0 13	0 15 13	20.36
70	578 5 15	578 5 15	0 8 14	9.22
1	559 7 21	559 7 21	0 8 11	9.06
1872	472 0 11	470 0 11	0 6 11	6.95
1866	72 16 9	72 16 9	2 17 5	61.35
7	1,622 13 20	1,622 13 20	0 18 11	19.71
8	3,247 3 17	3,247 3 17	0 18 18	20.11
9	1,867 3 12	1,867 3 12	0 13 4	14.12
70

Corner Sackville and Granville Streets, Halifax, Nova Scotia.

Table with columns for years (1872-1899) and various numerical values, likely representing production or financial data.

1862-72.

Table titled 'Declared Quantities' with columns for years (1872-1899) and various numerical values.

Annual Summary.

Table titled 'Annual Summary' with columns for years (1862-1872) and various numerical values.

1860-72.

Table with multiple columns: 'Estimated Quantities stolen and not reported', 'Estimated and Declared Quantities', 'GENERAL SUMMARY', and 'Annual Yield'.

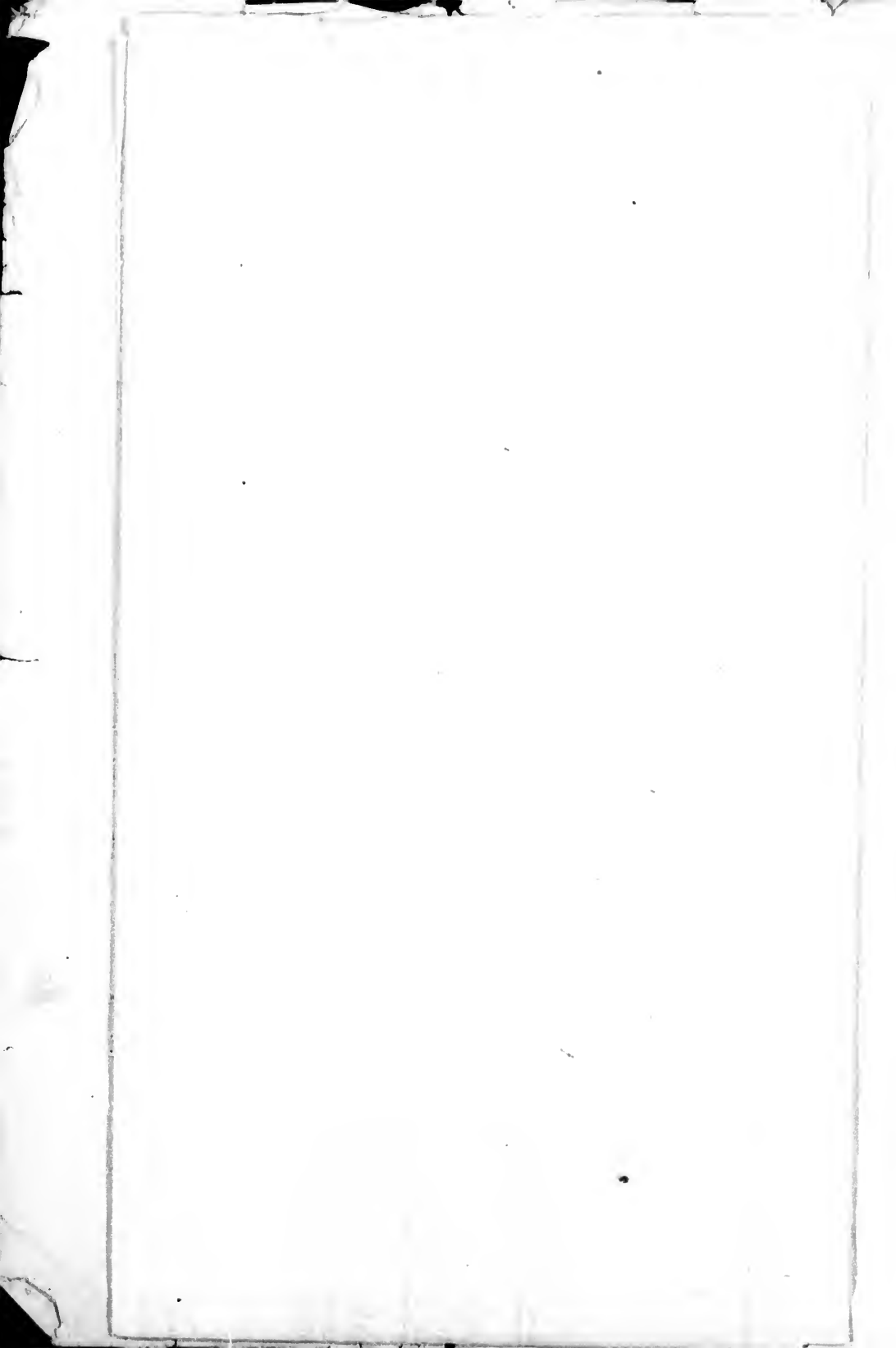
of 1872 still presents some interesting features which, briefly adverted to below, will be more fully discussed in a separate Review. The Eldorado at Wine Harbour now owned in London has been extremely productive, and reflects much credit upon its manager...

A. H.

reet, E.C.; and Tribuer & Co., 60, Paternoster Row, E.C.

OPYRIGHT.)

FIFTIETH THOUSAND.



THE GOLD YIELD OF NOVA SCOTIA.

INTRODUCTORY.—The accompanying Tables published annually since 1865 show the gradual development of the Provincial gold industry ; and it is to be hoped that they afford useful data not only for the statistician and political economist, but also for the cautious investor who would naturally seek assurance for the stability of any enterprise in which he proposed embarking in an unembellished statement of results extending over many years. Readers who care not to wade through a long array of figures may take interest in the subjoined summary.

General Results.—Making allowance for quantities stolen and otherwise not reported—approximately ten per cent. of the whole—the value of the total gold yield from the autumn of 1860 to the close of the year 1872 was £948,000. The traceable and officially recognised yield for the years 1861 to 1872 inclusive, is 215,871 ozs., or £863,484 in value ; of which £12,532 (3133 ozs.) from alluvial washings, and £850,952 (212,738 ozs.) from quartz treated in the mill. The largest declared yield in any one year for the whole Province was £109,258 (27,314½ ozs.) for 1867 ; the largest annual yield of any separate district £57,617 (14,404½ ozs.) for Waverley in 1865 ; the largest annual yield of any single mine £34,910 (8,727½ ozs.) from the TUDOR mine at Waverley in 1864—not reckoning about 3,000 ozs. known to have been stolen ; and the largest bar of gold ever cast was in June 1865, from the same mine, the property of Mr. LEOPOLD BUERKNER, the weight being 1,200 ozs. and its value £4,800. The largest aggregate amount produced from mines owned by companies, is £220,000 from the *Ophir* at Renfrew, the *Wellington* and *Palmerston* at Sherbrooke, and the *American* at Waverley. The largest amount produced from a mine owned by one person is £72,000 from the *Tudor* at Waverley. The largest return in proportion to the workings, is £72,000 from the *Wellington* mine on a 13 inch lode, opened only 180 feet in length and 500 feet in depth.

Promoters of public companies have received about £1,000,000 stg. for claims. The largest price ever paid was £4500 for two free claims at Waverley of 150 feet each. The largest capital of any mining corporation, proportioned to their holding, was that of the Tipperary and New York Company, who owning only 300 feet in one and 150 feet in another district, organized for the amount of £50,000.

The Provincial Government has received about £50,000 for rents and royalty.

The cost of 2,227,550 days' labor, estimating wages at five shillings a day—which is higher than the average of the first five years—was £556,888.

The cost of 55 mills, the greatest number at any time in operation, may be given as £77,200; allowing £1,600 each for 37 steam, and £1,000 each for 18 water-mills.

The cost of supplies, rated at 5 sh. for each ton raised, amounted to £56,478.

Incidental expenses reckoned at 10 per cent. on the totals for labor, supplies and machinery, were £69,434.

The total legitimate cost, then, of eleven years declared yield, Government exactions included, was £810,000, leaving a margin of £29,484, reserves comparatively intact, and plant and recoverable tailings worth £75,000.

The production of the several proclaimed districts, from the quartz mines alone, continuing developments on lodes now actually worked to a mean depth of 1000 feet, and confining them to present lateral bounds would, according to the average of declared yields, amount collectively to £27,000,000.

Quartz Mining.—It will be observed from accompanying Tables that quartz is the chief source of gold in this Province, and that the proportion per ton varies considerably in each district. There are not only patches in every district, but there are entire districts (as in Australia), where the quartz is exceptionally rich; but to counter-balance this, the veins are narrow and more expensive to beneficiate. £1. 8s. per ton is the present lowest cost of raising and reducing 2,000 lbs. of quartz from a lode one foot in width, running in slate. The attention of quartz miners here has been too much confined to narrow lodes; but when it comes to be understood that it is relatively cheaper to operate on large quantities of low grade ore than on picked lots of rich ore, wide veins yielding five to ten pennyweights, which might be profitably worked on an extensive scale at a cost of only two or three pennyweights, will cease to be disregarded. Small veins, however, will never be wholly abandoned so long as it is remembered that in Grass Valley, California, seven million dollars' worth of gold were produced from a lode only averaging fourteen inches in width.—(*See Mineral Resources of the United States, 1867.*)

Alluvial Mining.—With the exception of beach washings at the Ovens, which were prosecuted during the years 1861 and 1862, alluvial mining has been almost wholly neglected. Professor B. SIL-LIMAN and Mr. CAMPBELL incline to the opinion that the auriferous

debris of this Province have been swept beneath the ocean ; but M. M. J. W. DAWSON, J. A. PHILLIPS, T. STERRY HUNT, the late AUGUSTE MICHEL and A. R. C. SELWYN, who in the succession named have examined and reported on this region, consider that systematic search for alluvial gold might well repay the prospector. At Tangier Harbor a nugget weighing 27 ozs. was found in 1862 ; and at Middle River, Cape Breton, and Gay's River pieces of gold weighing from 10 grains to 17 dwts. have been washed. At Nine-Mile River, Stewiacke, Indian Path, and Gold River, the alluvions are deep and impregnated with fine gold. From the last mentioned district Dr. How obtained very remarkable results, which are cited in his *Mineralogy of Nova Scotia*, and in Dr. DAWSON'S *Acadian Geology*, and were to a great extent, practically sustained by Mr. MICHEL'S subsequent experiments on the ground. Recent trials on an extended scale at Gay's River gave very satisfactory returns.

Average per Ton.—The eleven years' mean from the crushing of 249,346 tons British, is 16 dwts. 20.005 grs., against which Victoria, Australia, reports a thirteen years' mean of 10 dwts, 11.39 grs. per ton, and a further yield of 2 dwts. 14.91 grs. from after treatment of the tailings. The highest average for the whole Province in any one year was 1 oz. 3 dwt. 6 grs., in 1865, and the lowest 13 dwt. 23 grs. in 1871. The highest yearly average of one district was 4 ozs. 13 dwts. 15 grs., for Montagu in 1870, and the lowest 2 dwts. 21 grs. for the Unclassified Districts in 1872. The highest district average for the whole period from 1862 to 1872 is 2 ozs. 16 dwts., 8 grs. for 4370½ Brit. tons crushed at Montagu ; the lowest 6 dwts. 22 grs. for 5030½ tons crushed in the Unclassified Districts. As concentration of the tailings takes place in only two mills, and that but recently, the above average does not represent the gold contents of the quartz that has been crushed by a large per centage.

Average Earnings.—The mean yearly average for all districts amounts to £117.11.6 ; Victoria, Australia, showing a mean of £80.11.5-38d for twelve years ended 1871. The highest average for the Province was £155.14.8 in 1867 ; the lowest £38.4.0 in 1862. The highest in one district for the whole period is £177.13.11 for Sherbrooke, the lowest £43.10.2 for the Unclassified Districts. The highest district average for one year is £363.3.8 for Wine Harbor in 1872 ; the lowest £9.16.8 for the Unclassified Districts in 1867.

The *daily* provincial mean for the period covered by this review is 7s. 6-44d., and for each district as follows : Sherbrooke, 11s. 5-18d. ; Wine Harbor, 8s. 10-34d. ; Renfrew, 8s. 2-62d. ; Caribou, 8s. 2-46d. ; Uniacke, 8s. 2-17d. ; Montagu, 7s. 9-64d. ; Waverley, 6s. 9-65d. ; Stormont, 5s. 9-92d. ; Oldham, 5s. 9-45d. ; Tangier, 3s. 10-30d. ;

Unclassified, 2s. 9-47d. The daily average for Wine Harbor last year was £1 3s. 3-37d. per man, while his ordinary wages only amounted to 5s. or 6s. a day.

Number of Miners.—The total number of days labor declared for eleven years is 2,227,550; equal to the number expended in *thirty-four days* in Victoria, Australia, in the year 1871. The greatest number of miners employed in any one year by the whole Province was 887 in 1863; and by one district 317—in Waverley—in 1866.

The daily provincial mean for the whole period was 649; the highest district mean, 152 for Waverley, and the lowest 19, for Caribou.

Quartz Raised.—The aggregate returns give a mean of 254 lbs. for each days' labor, but allowing one third of the hands as employed elsewhere than at the pits, it would appear that it required, on average, 6 men to raise 2240 lbs. of quartz.

Quartz Crushed.—The total quantity crushed is, in round numbers, 250,000 tons British, or no more than has been treated in four years in *one mine* in Australia.

Mills.—At the close of the year 53 mills were standing, but hardly a dozen in constant operation. They average ten stamps apiece, and their aggregate capacity is 530 tons a day, or 165,000 tons a year, which could even be doubled by the previous use of patent crushers. So far the mean quantity treated, per day, is slightly in excess of 72 tons.

General Remarks.—This condensed Review is chiefly for the purpose of directing attention to a new field for the profitable employment of European, more particularly British, capital. The noble efforts of the ROYAL COLONIAL INSTITUTE, are teaching England the value of her Atlantic possessions, whose denizens should also take pride in making known resources of interest or benefit to the Empire.

The proximity of Nova Scotia to the Mother-Country, its accessibility from all points by land or sea, its excellent harbors, innumerable rivers, immense forests, extensive deposits of coal, iron and gold, and above all its wholesome climate and law-abiding population, are claims worth considering by capitalists who invest in mining ventures and who would give a British colony the preference if reasonable assurance were offered that the risks there would not be greater than in distant alien countries.

An eleven years' abstract of returns made under oath, presented in the accompanying Tables gives that assurance, and at the same time practically refutes any imputation of bias or imaginativeness that might otherwise be raised against an advocate of Nova Scotia Gold Mining.

A. H.

January, 1873.

Note.—The detailed review of "Gold Mining in Nova Scotia," referred to in the Statistical Chart will appear in April next.

LOVELL'S DOMINION AND PROVINCIAL DIRECTORIES.

NOTICE.

Learning that my name has been unwarrantably used in connection with Directories now being canvassed in the Provinces, and entirely distinct from my works, and that in other cases it has been stated that my Directories have been abandoned, I would request those desiring to give a preference to my works to see that persons representing themselves as acting for me are furnished with satisfactory credentials.

JOHN LOVELL, *Publisher.*

The CANADIAN DOMINION DIRECTORY, and SIX PROVINCIAL DIRECTORIES, prove a correct and full index to the Dominion of CANADA, NEWFOUNDLAND, and PRINCE EDWARD ISLAND, and a combined Gazetteer, Directory and Hand-book of the six Provinces.


SUBSCRIPTION TO DOMINION DIRECTORY:

Dominion of Canada Subscribers	\$12 Cy.
United States do.	12 Gold
Great Britain and Ireland do.	£3 Stg.
France, Germany, &c. do.	£3 Stg.

SUBSCRIPTION TO PROVINCIAL DIRECTORIES:

Province of Ontario Directory.....	\$4 00
Province of Quebec Directory.....	4 00
Province of Nova Scotia Directory.....	3 00
Province of New Brunswick Directory ...	3 00
Province of Newfoundland Directory.....	2 00
Province of Prince Edward Island Directory.....	2 00

No money to be paid until each book is delivered.

 Rates of ADVERTISING will be made known on application to

JOHN LOVELL, *Publisher.*

Montreal, Jan. 1873.

"THE CANADIAN ILLUSTRATED NEWS,"

A Weekly Journal of Current Events, Literature, Science
and Art, Agriculture and Mechanics,
Fashion and Amusement.

PUBLISHED EVERY SATURDAY, AT MONTREAL, CANADA,

By *GEORGE E. DESBARATS.*

Subscription, in advance, \$4.00 per annum (including postage). Single
Numbers, 10 cents.

TRÜBNER & CO.
BOOKSELLERS & PUBLISHERS,
8 and 60, PATERNOSTER ROW, 60 and 8,
LONDON, E. C.

Messrs. TRÜBNER & Co. direct attention to their "*American and Continental Literary Record*,"—published weekly, at five shillings per annum, post free,—as well as to their stock of valuable Scientific Works.

"THE MINING JOURNAL,"
Railway and Commercial Gazette.
Office, 26 Fleet Street, London, England.

RICHARD MIDDLETON & HENRY ENGLISH, PROPRIETORS.
Single Copies—Stamped, Sixpence, 6tg. Unstamped, Fivepence, 5tg.

F. DANGERFIELD,
LITHOGRAPHER, ENGRAVER & PRINTER,
22 Bedford Street, Covent Garden, W. C.,
LONDON, G. B.

Globa Scotia Printing Company,
Corner Sackville and Granville Streets,
HALIFAX, N. S.

PARTICULAR ATTENTION PAID TO
PLAIN AND ORNAMENTAL PRINTING.

—:O:—

Books, Pamphlets, Reports, Cards, Law and Commercial Blanks, &c., &c.,
printed to order on reasonable terms.

