

THE COMMERCIAL

FINANCE AND INSURANCE REPORT

Subscription, \$2.00 per Annum in Advance.

Established 1882.

Published Weekly.

VOL. 21

WINNIPEG, CANADA, NOVEMBER 8, 1902

No. 9



MOORE'S
AIR LIGHT
HEATERS

Shows No. 105 for wood, made in three sizes. They burn wood, coals and trash. Even heat day and night. Fire not out during the entire winter. No danger of your plants freezing. They cost no more than other stoves and burn less fuel.

Man'toba Depot.
MERRICK, ANDERSON & CO.
Winnipeg.

CODVILLE & CO.

Wholesale Grocers



—Packers of—

**Celebrated
Gold Standard
Teas**

Coffee, Baking Powder and Spices.

BANATYNE AVE. E., WINNIPEG.
Branches: BRANDON and CALGARY.

Granby Rubbers...

Are Famous for
Good wear

Orders shipped same day as received.

Catalogue and Price List mailed on application.

THE AMES HOLDEN CO.

Boots and Shoes, Granby Rubbers
WINNIPEG.

BROMLEY & CO.



Tents
Awnings and
Mattress
Factory.

Cor. Princess and Alexander St., Winnipeg

Wholesale Smallwares
and Fancy Goods

J. McLEOD HOLIDAY
173 McDermot Ave. Winnipeg.

DIRECT EXPORTER OF
SENEGAL ROOT.

CRANBERRIES

Cape Cod and Jersey.



Mexican
Oranges
Cal. Lemons
Malaga
Grapes
Fancy Winter
Apples

Fancy Box Apples
WRITE US. WIRE US.

For Evening Wear...

We have put in stock a shipment of Blouse Silks, put up in Blouse ends, trimmed with Parisian Ecru insertions, to retail from 60c to \$2.00 per yard.

Lace Costumes, net ground with flounces, hand-made, trimmed renaissance, Black Sequin Robes, trimmed Black and Steel Sequins.

Orders shipped same day as received.

**THE GAULT
BROS. Co., Limited**

WINNIPEG

JUST OPENING UP
A LARGE SHIPMENT OF

German Flannels

27 and 41 inches wide, in eight different qualities, in new and stylish patterns.

Orders for above can be shipped out without delay.

Samples may be seen with our Travellers,—or send your order direct, and it will receive our best attention.

Homespun

(Scarce Goods.)

A full assortment in different shades of Grey and Black.

REPEAT ORDERS FOR

Ladies' Mantles and Jackets

Will be carefully filled. Although some lines are broken, a good selection may yet be had.

If you want ANYTHING in DRY GOODS—Write Us.

R. J. WHITLA & CO'Y

LIMITED,
Wholesale Dry Goods,
WINNIPEG.

H.B.Co.



Pure
Flavoring
Extracts

HAVE NOT THEIR EQUAL
WHEN A PURE FLAVOR IS
DESIRED.

Special Prices to the Trade.

HUDSON'S BAY COMPANY
Wholesale Grocery & Liquor Dept.



**TENTS, FLAGS AND
ROLLER AWNINGS**

**THE EMERSON-HAGUE
MANUFACTURING CO. LTD.**

WINNIPEG.

Great Trade Makers!

OUR STAPLE LINES

A Full and Complete
Stock of

**Boots and Shoes
Mitts and Gloves**

In all Grades at
Rock Bottom Prices
Immediate attention to letter orders.

THOMAS RYAN & CO
LTD.

WINNIPEG, MAN.

THE ORIGINAL

Violet Wrapping Paper

STILL LEADS.

TRY IT.

For sale in the West only by

McALLISTER & WATTS
43-45 Rennie Street - WINNIPEG.

WINNIPEG Business College

Cor. Portage Ave. and Fort St.

PREPARE

For the active duties of a business life by taking a course at the Winnipeg Business College. Annual catalogue sent free to any address.

G. W. DONALD, Sec'y.

BUTTER

Finest September and October butter is in good demand and merchants will do well to keep their receipts moving this way. We can guarantee as good results as can be obtained elsewhere, besides giving prompt returns and remittances.

EGGS

Fresh stock doing well. Our trade is demanding a large quantity. Don't wait for a large shipment, whenever you have two or more cases, send them along to our address.

CHEESE

We can offer you the selections of our Manitoba factories in September cheese. We have been most careful in selecting fine goods this season. Every box inspected by our own buyer. If you favor us with your orders for your winter requirements, you will certainly be pleased with the goods.

J. Y. GRIFFIN & CO. WHOLESALE COMMISSION MERCHANTS AND PORK PACKERS
WINNIPEG

ONTARIO SNOW APPLES

*We have some very nice
bright stock that we are
selling at \$5.00 per Bbl.*

R. A. ROGERS & COMPANY Ltd.
WINNIPEG

WINDOW GLASS

16 Oz. 21 Oz. 32 Oz.

PLATE GLASS POLISHED AND ROLLED

Sizes in stock up to 108 x 144.

FANCY GLASS

Chipped, Prismatic, Cathedral, Muffed, Tuscan, Corinthian, White and Colors.

TRY OUR PUTTY

G. F. STEPHENS & CO., Ltd. Market St. WINNIPEG

Established 1861.

PORTER & CO.

Direct Importers of

CROCKERY, GLASSWARE, CHINA LAMPS, CUTLERY, SILVER-PLATED WARE, AND FANCY GOODS.

Stock for Fall and Xmas Trade is very complete and prices right.

Our representatives are now on the road with full lines of Samples. It will pay you to wait for them.

Mail Orders will as usual receive Prompt and Careful Attention.

330 Main Street. WINNIPEG.

ALWAYS AT THE TOP

Trade Mark
W. G. P. Clark

SHIRTS COLLARS

and

CUFFS

"Best Made."

MANUFACTURED BY

THE WILLIAMS, GREENE & ROME COMPANY

Limited.

BERLIN, ONTARIO.

ELLIS & GROGAN
WAREHOUSEMEN
COMMISSION AGENTS, ETC.
CALGARY, ALBERTA.

We have made large additions to our warehouse accommodation, and are prepared to buy or sell consignments on commission, and do a general warehouse business. Cars distributed, etc.

HICKS BROS. & CO.

TEA IMPORTERS

And wholesale dealers in

Fancy Groceries, Butter, Eggs, Cheese

Packers of Britannia, Beaver and Buffalo Blends of Packet Teas, and sole Agents for Thos. Lipton's Package Teas for Manitoba, N. W. Territories, and British Columbia.

277 Rupert Street,
274 Pacific Avenue, Winnipeg

Hardware Trade Notes.

Bar Iron has advanced to a \$2.65 basis in Ontario.

Toronto jobbers have put barbed wire down 10c per 100 pounds.

Cleveland dealers have reduced galvanized wire 5c per 100 pounds.

Galvanized eave troughs and conductors are about five per cent cheaper in United States markets owing to changes in the iron market.

A quieter feeling prevails in the United States metal markets. Buyers are deferring further purchases until after the first of the new year and there is a feeling abroad that values will shortly settle down a little.

Negotiations are under way for the erection for a large iron and steel plant at Toronto, to operate on raw material obtained from Sidney, C. B. in the form of billets. The intention is to use the canal for carrying. The company want fifteen acres of land from the city and will guarantee a wage bill of \$50,000 a year.

In connection with the official statistics of pig iron production in Canada for the first six months on the year 1901-2, it is learned that the amount paid out in bounty during the current financial year to date is about \$800,000. There are large stocks of iron and steel and especially the latter, upon which has been no customs and has not yet been claimed, pending decision of the dispute between the producers and the auditor-general.

Thrashing is now completed in the Hartney district, and an immense amount of wheat is being delivered at the elevators. Already this season there has been 150 carloads of wheat shipped from that point.

THE COMMERCIAL

The recognized authority on all matters pertaining to trade and progress in Western Canada, including that part of Ontario west of the boundary of the Provinces of Manitoba and British Columbia and the Territories.

Twenty-First Year of Publication.

ISSUED EVERY SATURDAY.

Subscriptions—Canada and the United States \$1.00 per annum in advance, or \$2.00 when not so paid; other countries \$2.50 in advance.

Changes for advertisements or stops should be in not later than Thursday morning. Advertisements purporting to be news, or which profess to express the opinion of this journal, will not be inserted.

The Commercial certainly enjoys a very much larger circulation among the business community of the vast region lying between Lake Superior and the Pacific coast than any other paper in Canada, daily or weekly. The Commercial also reaches the leading wholesale, commission, manufacturing and financial houses of Eastern Canada.

Office 219 McDermott St. Telephone 224.
D. W. BUCHANAN,
Publisher.

WINNIPEG, NOV. 8, 1902.

PROJECTED RAILWAYS.

Some interest has been thrown into the railway situation in Manitoba by a notice appearing in the official Gazette to the effect that application will be made at the next session of the legislature for an act to authorize the construction of a number of railway lines. A glance at the accompanying map will show the lines which it is proposed to build under this charter. On paper, at least, the enterprise is a vast one, extending its ramifications to all parts of the province. Several connections running southward into the United States will be noticed. C. E. Hamilton, a St. Paul lawyer, is the applicant for the promoters, the latter remaining in the background for the present. The main interest in the matter here centres in the promoters. Who they are is the question. The Great Northern, the Northern Pacific and the Great Trunk are suggested as possible backers of the enterprise, but beyond that of the solicitor, no other name has been definitely associated with the proposed work. Mr. Hamilton says that eastern capitalists are behind the project, that they have abundant funds, and will enter upon the work of construction as soon as a charter is obtained. Further developments in connection with the proposed railway enterprise are awaited with interest. It is to be hoped that promoters of this enterprise are not preparing for a raid on the provincial treasury. Furthermore, if there is any understanding between them and the provincial government, it is to be hoped the people will be given a reasonable time to consider the situation. It has been the fashion in the past in Manitoba to enter into agreements between promoters and the government secret up to the last moment, and then rush them through before the public would have time to realize what was going on, as witness the Dauphin railway deal, and later the Canadian Northern agreement. If this latest scheme is a government measure in any form, the people should be given particulars at once.

There are at present employed over 2000 men on the river front, at Port Williams, which includes work on the coal dock, the sheds, the elevators and the construction of D and E elevators.

GOVERNMENT RAILWAYS.

The idea of government railways seems to be gaining ground in Canada. Recently the contract was let for the first government railway in Ontario. Now we have Hon. A. G. Blair, federal minister of railways and canals, declaring his belief in government ownership of railways. Mr. Blair has recently made a tour of the West, and what he has seen and learned during this trip has evidently developed, or at least strengthened any views he may have held in favor of government railways. On his return to Ottawa he stated that there is "ample room for at least four more trunk lines in the West, right through to the Pacific coast." One of these, he says in effect, should be a government road, for which there would be "a great future." Such a road, it is asserted, is the one thing necessary to bring about the equalization of freight rates, which is necessary for the welfare of the West. Both political parties are evidently keeping the question of government ownership of railways in view, so as to be prepared to gain whatever advantage may be derived from the development of public opinion in favor of government railways.

people on their arrival in Canada, owing probably to the report current about the great persecution which they were subjected to in Russia, on account of their religious beliefs. It is quite possible that these reports of persecution were very much exaggerated. At any rate, if they cut up such antics in Russia as they have recently been displaying here, it is not to be wondered at that they were subjected to official restraint. The belief here that these Russian peasants were akin to our Quakers in their beliefs and mode of living also assisted in creating a favorable impression of them at the outset. They have, however, developed features quite different from the Quakers. It is ascertained that some of these beliefs have been adopted since their settlement in Canada. Certainly they came here from Russia wearing sheepskin coats, after the manner of the peasants of that country. Later they appear to have become extreme vegetarians. They not only refused to eat animal food, but they discarded all articles of clothing made from animal substances, such as leather boots, woolen and fur garments, etc. They even decided that it was a sin to use animals for any purpose, and they accordingly turned their horses, cattle, etc., loose, and began hauling



THE LATEST RAILWAY SCHEME.
Proposed New System of Railways in Manitoba.

THE DOUKHOBOR ARMY.

Western Canada has probably received more newspaper notoriety as a result of the remarkable movement among the people known as Doukhobors, than from any other cause since the Saskatchewan rebellion of 1885. Unfortunately the publicity given in each case is not of the kind calculated to be of much benefit to the country. Many people, however, who know little or nothing about Western Canada will be reading with interest about the peculiar antics of our Doukhobors, and wondering what sort of a people they are and what sort of a country they are in. This movement among the Doukhobors is certainly one of the most remarkable of the kind that has occurred in modern times. It certainly presents a most interesting study of one phase of human nature.

The Doukhobors are about the newest element of our population. Their settlement in this country dates back only a few years. They came here from Russia. In that country they are understood to have isolated themselves from the rest of the population, and to have held views somewhat akin to the English-speaking people known as Quakers. Quite a fuss was made over these

their wagons themselves and doing all labor by hand. From reports received from time to time it appears that these peculiar people have been going from one extreme to another, and this has culminated in the remarkable movement which has now drawn to them the attention of the civilized world. Whole communities of them appear to have become religiously demented, and led by a few men who have acquired a wonderful influence over them, they have deserted their homes in a body and started out on a tramp in a southeasterly direction, without food or proper clothing. This movement has started right in the face of winter. Women and children were taken along, and even the sick were carried with them on stretchers. On arriving at the first town in the course of their march, the women and children were forcibly detained and housed and fed, but the men were allowed to go on. Where they wish to go they do not seem to know.

Altogether it is a most peculiar movement, and it seems almost beyond belief that entire communities of human beings could be led away from all judgment and reason in this fashion. The settlements affected are, mostly in the district about Yorkton,

Assiniboia territory. There are settlements of these people in other parts of the country which are not affected with this mania. So general is the dementia that in the Yorkton district there were only a half dozen or so people left in some of the settlements.

In addition to the peculiarities mentioned, it may be stated that the Doukhobors have refused to enter the lands on which they are located, as they declare that it would be a sin to recognize any human authority or government.

This remarkable situation in connection with the Doukhobors brings the whole question of immigration up for consideration. Evidently a serious blunder was made when these people were induced to come to this country. It was known at least that there were a peculiar people, before they were brought here, and this should have led to a careful investigation of their case before they were induced to come. They certainly would not have come here if they had not been given assistance and offered inducements. People with peculiarities as a general rule are good people to leave alone. The fact that they refuse to bear arms was one of their known peculiarities before they left Russia. Should we encourage people to come here who refuse to take upon themselves the duties of citizenship?

The Ruthenians, or Galicians, who began to come here from Austria about the same time as the Doukhobors arrived, were not received with nearly as much favor as the latter. It is a queer lot yet if the Ruthenians as a body are a desirable class. Certainly they have figured conspicuously in the criminal record of the country, in comparison with their numbers. They will, however, undoubtedly make better settlers than these peculiar Russian peasants. They will in time become assimilated, as they have no special peculiarities as a class to keep them separate. They have more individuality—more ambition than the Doukhobors. If they are not allowed to congregate together in too large numbers, they will undoubtedly become Canadianized in a few generations. Care, however, should be taken to scatter these people in small colonies. Already too many have been allowed to congregate in some settlements.

The community system in which the Doukhobor lives is not calculated to develop much ambition. If these people are lacking in individuality is shown by the way whole communities have been led away by a few fanatical or religiously demented persons. They could never prosper, particularly in a northern climate, unless clinging to the extreme vegetarian doctrines which they profess to believe. If any country is willing to take them, it would be probably the best thing they could do to assist them to get there as early as possible.

This Doukhobor episode should teach us a lesson that greater care is necessary in the direction of our immigration work. It is time that the quality, rather than the quantity, should be the foremost consideration. A little investigation beforehand would probably have shown that the Doukhobors were not the right kind of material to bring to this country. Fortunately, however, our Doukhobor population is not very great.

The announcement made by Sir William Mulock that the postoffice department has fixed the postage rate for the first time in its history, a surplus is gratifying, particularly in view of the reduction in letter postage rates from 5 to 2 cents.

BANK OF MONTREAL

ESTABLISHED 1828.
Capital all Paid-up - \$12,000,000
Reserve Fund - 7,900,000
Prof. Profit and Loss - 876,531.64
HEAD OFFICE, MONTREAL.
BRANCHES: Montreal, Toronto, St. John's, Halifax, St. Lawrence, etc.

IMPERIAL BANK OF CANADA

Capital authorized - \$4,000,000
Capital paid-up - 2,868,932
Reserve - 2,436,596
T.R. Merritt, Pres.; D.R. Wilkie, Vice-Pres.
HEAD OFFICE, TORONTO.
BRANCHES: London, St. John's, Halifax, etc.

THE CANADIAN BANK OF COMMERCE

Head Office, Toronto.
Capital Paid-up - \$5,000,000
Reserve Fund - \$2,000,000
Mon. Geo. A. Cox, President.
H. E. Wiseman, General Manager.
GENERAL BANKING BUSINESS TRANSACTED.
Interest Allowed on Deposits in Savings Bank Department.

BANK OF HAMILTON

Head Office, Hamilton.
Capital (all paid up) - \$2,000,000
Reserve Fund - 1,600,000
J. D. R. Gray, President.
J. T. Wood, Vice-President.
AGENCIES THROUGHOUT CANADA AND THE FOLLOWING POINTS IN ONTARIO AND THE WEST.

DOMINION BANK

Capital Authorized \$3,000,000
Capital Paid Up - \$2,500,000
Reserve Fund - \$2,500,000
President - E. B. Osler, M.P.
Vice-President - Wilmut D. Matthews.
HEAD OFFICE - TORONTO.
WINNIPEG OFFICES: Main Office - Main and McDermott Streets.
F. L. PATTON, Manager.
North End Branch - 709 Main Street.
W. C. ARMSTRONG, Manager.

WINNIPEG BRANCH

Branches in Ontario and Quebec: Essex, Ont.; Port Colborne, Ont.; Hamilton, Ont.; St. Catharines, Ont.; Niagara Falls, Ont.; Woodstock, Ont.; North Bay, Ont.; Welland, Ont.; Ottawa, Ont.
WINNIPEG BRANCH: Savings Bank Department - deposits received and interest allowed.
N. G. LESLIE, Manager.

BANK OF BRITISH NORTH AMERICA

ESTABLISHED 1851.
Incorporated by Royal Charter in 1861.
Capital - \$4,266,666.67
Reserve - \$1,776,333.33
Head Office - 5 Gracechurch Street, London, E.C.
Branches in Canada: London, Hamilton, Toronto, etc.

THE TORONTO GENERAL TRUSTS CORPORATION

ESTABLISHED 1883.
Capital - \$1,000,000
Reserve Fund - \$270,000
Head Office: Toronto.
Branch Office, Bank of Hamilton Building, Winnipeg.
President: JOHN HOSKIN.
Vice-President: Hon. S. C. Wood, W. H. Beatty, Toronto.
J. W. Langmuir, Managing Director.

UNION BANK OF CANADA

Capital Paid-up - \$2,000,000
Reserve - 650,000
HEAD OFFICE - QUEBEC.
Lester Thomas, Esq., Pres.
E. J. Hall, Esq., Vice-Pres.
C. G. Brown, Esq., Cashier.
E. W. Webb, General Manager.
F. W. S. Cropp, Assistant Inspector.
Branches in Manitoba and N. W. T.

BANK OF OTTAWA

Head Office, Ottawa.
Capital Authorized \$2,000,000
Capital Paid Up \$1,990,900
Capital Subscribed \$1,990,900
New York, 11 Wall Street, W. Larned and C. W. Wall, Esq. in U.S.
San Francisco - 129 Sansome St., H. B. McMillan and J. H. Johnson, Agents.
Drafts on South Africa may be obtained at the Bank's Branches.

THE GREAT WEST LIFE ASSURANCE CO.

COMPARATIVE STATEMENT TO 1st MAY
let May, 1901 let May, 1902 Increase Per Cent
Applications Received 912,550 9,314,100 441
Premium Income 105,258 143,957 37.70
Interest Income 11,912 20,549 12.63
Gains and Expenses 68,310 76,562 2.93
Some of our Western folios have forgotten to send in their applications. We still have a supply of forms.

BOLE'S SPICED BLACKBERRY BRANDY

It is the best for dealers to handle. IT SELLS AT 25¢ A BOTTLE. THREE DOSES WILL CURE OR MONEY REFUNDED BY THE BOLE DRUG CO. WINNIPEG.
Established 1874. 29 Years' Experience.
CARRIERS, BROCK, JOHNSTON & DAW.
Insurance, Financial, Real Estate Agents.
Rent Collections a Specialty. Estates Managed. Money Invested.
J. & J. Taylor Sares and Vault Doors.
481 MAIN STREET WINNIPEG

BANK OF NOVA SCOTIA

Incorporated 1822.
Head Office - Halifax. Gen. Manager's Office - Toronto.
JOHN Y. PAYZANT, President. H. C. McLEOD, General Manager.
Capital Paid-up - \$2,000,000.00
Reserve - \$2,500,000.00
A General Banking Business Transacted.
Interest allowed on deposits, including Deposit Receipts and Savings Bank Deposits.
C. A. KENNEDY, Manager, Winnipeg.

W. R. Johnston & Co. Limited

WHOLESALE CLOTHIERS
Our stock is at all times well assorted, and we are, therefore, enabled to execute immediate orders promptly.
TORONTO.

OIL-SMELTER-MINES

DIVIDEND-PAYING STOCKS
Working on the plan of GENERAL AVERAGES, our investments are secure. We guarantee the original investment, and no investor has ever lost a dollar on a stock purchased from us.
DOUGLAS, LACEY & CO., New York
WILSON PATTERSON,
Local Mgr. 89 McIntosh Block,
Phone 188. Winnipeg.

The Grain Movement.

Chief Grain Inspector Horn has issued his monthly returns for October, showing the number of cars graded during last month as follows:

	Cars.
Wheat—	4,971
One hard	2,727
Two northern	858
Three northern	380
Rejected one	94
Rejected two	43
No grade	13
No. 1	3
Condemned	120
Total	9,240
Oats—	
Ex. No. 1	40
No. 1	34
Two white	39
No. 3 white	5
To mixed	11
Feed	4
Rejected	4
Total	147
Barley—	
No. 3 extra	3
No. 3	13
Feed	12
Rejected	1
Total	29
Flaxseed—	
No. 1	197
No. 2	12
Rejected	1
Total	210
Speltz	1
Feed	1

Grand total of all grains 9,656
 Handled by the Canadian Pacific Railway 7,635
 Handled by the Canadian Northern Railway 2,061

For the month of September there were 4,299 cars of wheat, 33 cars of oats, 45 cars of barley, and two cars of flaxseed, or a total of all grains of 4,380 cars, of which the Canadian Pacific Railway handled 3,412, and the Canadian Northern Railway 914 cars. Adding the totals for the first two months of the crop year, we have the following: Wheat, 13,590 cars, or equal to 11,482,650 bushels; oats, 180 cars; barley, 44 cars; flaxseed, 212 cars.

As the inspection returns show practically the entire movement of wheat from Manitoba and the Territories (exclusive of flour) it will be interesting to make a comparison with form-

er years. In September last year 4,793 cars of wheat passed through the hands of the inspectors, or over 500 more cars than were handled in the same month this year. In October last year 7,626 cars were handled, or 1,923 less than for the same month this year. The total for the first two months of the crop year, last year, was 12,419 cars, or 1,060 cars less

New Dairy Machinery Agency.

C. C. Macdonald, formerly dairy commissioner for Manitoba, has withdrawn from the position which he lately held with the Winnipeg Pure Milk Company, and is opening an agency in this country for F. M. Sharples, 28-32 South Canal Street, Chicago, makers of cream separators and dairy

machinery. In the European press, reckoned as German all their compatriots who have left the fatherland within the last sixty years. According to their calculation, the total German population is nearly 30,000,000, of whom 0,920,000 are settled in different parts of the American continent, principally in the United States.



DOUKHOBORS ON THE MARCH.

than has been handled in September and October this year. Of other grains, for the two months of last year there were 294 cars of oats, 55 of barley and 38 cars of flaxseed. This shows a decline in oats and barley but a large increase in flaxseed. The total of all grains and flaxseed for the first two new crop months of last year was 12,800 cars, compared with a total of 12,945 cars for the same period of this year, 2,591 cars in 1910, and 10,251 cars in the like two months of 1886.

machinery. Mr. Macdonald has just returned from a trip to Chicago where he visited the works of this concern. He is well pleased with what he saw and expects to build up a large trade in this country for the goods.

Magrath, Alberta, at present has a population of about eight hundred people. Three hundred of these have been added during the year.

The promoters of the Pan-German idea, of which so much is heard now-

The leading Dutch organs in South Africa are now condemning the scheme of the dissatisfied section of the Boers who contemplate going to Madagascar, South Africa, and other places to settle.

A company of United States parties have purchased the property at the northeast corner of Notre Dame avenue and Arthur street, Winnipeg. They are now negotiating for the erection of an hotel and store and office building on the property.

FURS FOR SORTING

**MEN'S
FUR COATS**

**LADIES'
FUR JACKETS**

Coons, Mongolian Lamb, Mexican Buffalo,
Wallaby, Calf, Wombat

Siberian Otter, Norway Seal, Coons, Electric
Seal, Astrachan, Grey Lamb, Wallabys,
Wool Seal, Alaska Fox, Wombat

Ladies' Storm Collars, Caperines, Muffs, Gauntlets, Ruffs, Capes,
Men's Fur Collars, Gauntlets, Caps, etc.

Send us your orders. Careful Attention. Quick Shipment.

THE REDMOND COMPANY, LTD.

FACTORY: COR. ST. HELEN AND LEMOINE,
MONTREAL.

WINNIPEG BRANCH,
84 PRINCESS STREET.

Any Man will be Proud

To be associated with garments possessing that custom tailored air shown in our spring designs.

Our men are coming your way. See the samples. There is something in handsome effects seldom attained outside of high-tailor made goods.

FINE RANGE SCOTCH SUITINGS.

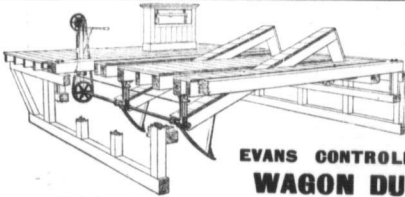
Our Sorting Stock is still large, but the lines are going out daily.

DONALD FRASER & CO.

Manufacturers of Fine Clothing

WHOLESALE

WINNIPEG—125 Princess Street.
MONTREAL—502 St. Paul Street.



GET
THE
BEST

THE EVANS CONTROLLABLE WAGON DUMP

Perfectly safe, fully control table, perfect, self-locking device.
Sole Agents:

Waterous Engine Works Co. WINNIPEG MAN.

"HOWE"

GASOLINE ENGINES

made by the same people who make the celebrated "HOWE" Scales.

They use less Gasoline, Run Cooler, Start Easier, Wear Longer, and give less Trouble than any Engine on the Market.

The Stuart-Arbutnot Machinery Co., Limited
Sole Canadian Agents. WINNIPEG, MAN.

Hodgson, Sumner & Co.

DRY GOODS

SMALLWARES

FANCY GOODS

345, 347 and 349 St. Paul Street,
MONTREAL.

Represented by A. F. Houston, Leland Hotel, Winnipeg.

United Fruit & Produce Co. LIMITED.

245 Main Street. Winnipeg.
Dried Apricots!

2000 Boxes 25 lbs.
CHOICE CAL. APRICOTS

Just Arrived
Write us for Quotations.

The pure food law of Minnesota has been enforced against the lard of the Armour Packing Company within the past few weeks to the extent of \$525.00, comprising seven fines.

J. G. MACKENZIE & CO.

381 & 383 St. Paul Street, Montreal

Are now clearing out at greatly reduced prices such seasonable goods as—

MANTLE BEAVERS, CURL CLOAKINGS, FRIEZES, TWEEDS, BLANKETS, HOSIERY, SHAWLS, UNDERWEAR, FLANNELS, ETC.

Our representative, MR. A. F. HOUSTON, is now out on his regular trip and will be pleased to be communicated with. Care of—

LELAND HOTEL, WINNIPEG.

THE BEST LINE OF

Warm Winter Specialties

IN THE MARKET

Manufactured to meet the peculiar requirements of the Western trade.

OUR SHEEPSKIN LINED, LEAT HER AND DUCK CLOTHING are great sellers and command trade here ever shown.

GLOVES, MITTS, MOCCASINS, SOCKS, ETC.

Full sorting stock carried in Winnipeg.

HUDSON BAY KNITTING CO.

S. D. R. FERNIE, Agent 128 Princess St., Winnipeg

The Brock Company (Limited)

WAREHOUSES:

TORONTO AND MONTREAL

OFFICES: WINNIPEG, VANCOUVER, QUEBEC, HALIFAX AND BRITISH COLUMBIA

1200 Pieces

28 inch Antoinette Flannels
—OR—
Twilled American Wrapperettes

Spots, Stripes, Objects and Scroll effects, in Black and White, Navy and White, Navy Royal, Red, Brown, Salmon, Sky, Green, French Grey, and Lian colors. Can be retailed at 12½c., worth 15c.

REPRESENTATIVES, MANITOBA, NORTHWEST TERRITORIES

T. H. WARDELL, W. T. WALTERS
P. H. DUNHAM, M. A. DAWSON
SANFORD BLOCK, WINNIPEG

A. E. MCNAUGHTON
VANCOUVER

JOHN W. LORD Insurance Broker

Special facilities for placing surplus lines of Insurance.
Automatic sprinkler equipment a specialty.

212 McIntyre Block - WINNIPEG.

IMPORTANT OPEN ALL THE YEAR ROUND

THOS. CLEARHUE'S
GLOVE WAREHOUSE
No. 285 Market St.

P. O. Box 240.

N. B.—A good stock of lined and unlined Gloves and Mitts now on hand. Merchants can assort their stocks quickly by ordering direct from Winnipeg.

JAS. MCCREADY & CO. LIMITED.

WHOLESALE

Boot and Shoe
Manufacturers

MONTREAL, QUEBEC

W. WILLIAMS, Agent

Presbyterian Ladies' College Toronto

Rev. Wm. Evans, D.D.
Principal of Knox College,
Toronto, Visitor and address—
Miss Margaret T. Foot,
Lady Principal,
St. Alexander's
School, Queen's University,
T. Mower Martin, 415
Bloor Street.

For a complete list of
courses, entrance, admission
and other information, consult
the University of Toronto
and the Presbyterian Board of
Christian Education.

The College has been
a success for many years
and is now in a position
to receive a large number
of students and the most
approved methods.

152 BLOOR ST. WEST

TORONTO

For Prospectus and Terms please apply to

MRS. T. M. MACINTYRE.

President.

Dry Goods Trade Notes.

Flannels are meeting with a much better demand in Canadian centres this season.

Staple lines of cotton goods are firmly held in New York, and sellers refuse to shade prices even to a trifling extent.

One review of the New York cotton goods market last week stated that "we believe is growing there that the cotton crop has been underestimated."

It is reported from New York that almost two thirds of the entire spring orders for women's wear already received have been for goods with a plaid or check effect.

Dress velvets continue in good demand, and large eastern houses state that they have booked considerable business in these and corduroys. Some factories in the old country are much overtaxed with orders.

A general advance in the woolen market is looked for in the United States. The amount may possibly be as much as 10 per cent. It will be that much on some lines. Yarns have already gone up.

Some Toronto jobbing houses are now asking slightly higher prices for cottons, especially plain greys. This is due to the fact that goods are coming more at the mills and old stocks bought at low prices are exhausted.

Printed cottons are very firm in price in the Canadian market and it is said that mills would like to advance their figures, but hesitate to do so for fear of United States competition. They think that if the arti-

It is believed that canned ton loes will sell as high as \$2 at factory points very shortly.

Confidence in the future of the market for raw sugar is general, based on the smaller yield from the Euro area crops.

Limited supplies of flax at \$m and a larger demand than usual have combined to sharply advance price. The California flax crop has been remarkably heavy.

Walnuts advanced two cents per pound last week in the United States producing districts. Hides at high figures failed to bring supplies out to any extent. The foreign crop is small.

Large size California prunes are bringing a cent per pound premium in southern markets. Jobbers are advancing prices. The California prune crop runs principally to smaller sizes.

Table advices from Patras quote fine Philliras currants at 12s. The demand on spot has been good and the market is fairly active and steady, with sales of Philliras at 3½c in half-cases, Amalias at 4½c per lb.

Latest advices from Michigan say that the beet sugar crop in that state will be between 225,000 and 275,000 barrels, whereas at the opening of the season 600,000 barrels were expected. Cold, wet weather unfavorably affected the crop.

Farmers of Ontario, who grew to better this year, are well satisfied with the outlook for prices. Prices paid for raw leaf are in excess of former years and the prospects are that buyers will further advance prices. The price




DOUKHOBORS PLOWING.

ful Yankee gets a foothold he will be hard to dislodge.

The dry goods business is marked at present by a decided revival in the ribbon department. All kinds of ribbons are in demand, and they are being worked into use in numerous ways which heretofore have not been thought of. New York, which is the largest dry goods market on this continent, reports a very much larger sale of ribbons for spring than was anticipated.

The strong line of the markets for raw cottons keeps holders of the finished goods very firm. A market report points out that the visible supply in America on September 1, 1902, was 210,000 bales, against 374,000 bales on the corresponding date last year, and that it is evident there was taken out of America during 47 days more than was taken out during the same period last year. These figures, it is claimed, indicate a consumption beyond all previous records. Advices are that receipts have now reached their maximum. Only in the two years out of the past ten has the movement failed to reach its maximum by the third week of October. Thereafter it has declined. In the two years in question, namely 1897 and 1898, the September movement was relatively small, and the crop was late. All advices are that the crop is an early one and may claim that it will be a small one.

Grocery Trade Notes.

Congrua teas have advanced ¼c per pound in New York.

Owing to scarcity of labor in seeded raisin quarters in California, there is a shortage of supplies.

now is 10½c, and it is predicted that buyers will run close to 12c per pound for the crop.

The Brazilian Review of October says of coffee:—Appearance seem to show that the present crop will not exceed probably 65 per cent. of last season's and may be even less. This would give 9,300,000 bags for the current crop, and with 1,400,000 of the last year already received raise the total entries to 10,750,000.

Mail advices from Portland, Ore., say of salmon:—The market continues strong, although business at present is not heavy. The shortage this year is variously estimated at from 1,000,000 to 1,500,000 cases, but no definite statement can be made as the canneries have not yet sent in full reports and the fall run is a matter of guesswork. The demand for salmon has increased more than 100 per cent since 1898, due to the increased consumption in the Orient, Australia, South Africa and the United Kingdom.

Mail advices from London on raw beet sugar, under date of October 18th say:—Owing to the lateness of the beet crop this year there is less sugar coming at present on the market than usual. This, coupled with the fact that Canadian, American and German refiners have recently absorbed all the old crop sugar left on offer, has had the effect of considerably strengthening the position and advancing quotations still further. Licht reports that the beetroot has pretty well matured now, and are of good quality, though rather smaller than usual, but has not at present issued his first estimate.

THE Edwardsburg Brands

STARCH AND SYRUP

Are well known all over the Dominion as a

STANDARD OF QUALITY

Assorted Stocks of all styles of packages now on hand with Winnipeg Wholesale Grocers. Order **CROWN BRAND SYRUP** in 2, 5, 10 and 20 lb. Tins.

BABIES, BLACK AND WHITE, DEMAND



E. NICHOLSON WHOLESALE AGENT
115 Bannatyne St. East, Winnipeg

MILLERS AND GRAIN MERCHANTS

WHEN OPEN TO PURCHASE

**JUTE FLOUR
COTTON "
BRAN
SHORTS
OAT
WHEAT
POTATO
COAL**

BAGS

BAGS of All Kinds. Do you handle the famous "BUFFALO BRAND" Wheat Bag? Samples and Prices furnished on application.

**E. NICHOLSON - WINNIPEG
AGENT FOR**

THE CANADA JUTE COMPANY, LTD., Montreal

**THE W. E. SANFORD
MF'G CO., LTD.**
HAMILTON, ONT.

Wholesale
Clothing Manufacturers

Offices and sample rooms in the Sanford block, Winnipeg, corner of Princess and Bannatyne streets, where a complete set of samples can always be seen.

Western representative—H. Kite, W. Dunlop, Geo. Shaw, A. McAllister.

FRANK LIGHTCAP

DEALER IN

HIDES PELTS, WOOL, SENEGA Etc.

EXPORTER OF

NORTHERN FURS

Highest prices paid for consignments and returns made promptly. Write for circulars containing market reports and full quotations.

172-174 KING ST., WINNIPEG.

P. O. Box 404.

J. L. MEIKLE & CO.

Wholesale Toys

China, Fancy Goods

Cutlery and

Musical Instruments

Travellers now on Fall trip. See their large variety of saleable goods.

PORT ARTHUR, ONT.

Heating Talk!

Now is the proper time to get estimates. Drop us a card for full information about—

GLARE FURNACES

Our line of metal goods embraces Patent "Safe Lock," Shingles, Sidings and Embossed Steel Ceilings.

GLARE & BROCKEST

WINNIPEG, MAN.

ELLIS & GROGAN, Agents.
CALGARY, N. W. T.

CIDER!



Allen's Pure Juice

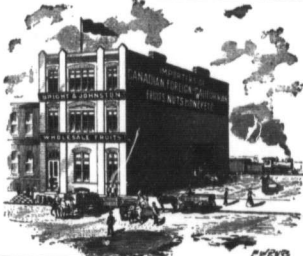
Unloading a car this week in 10-gal., 20-gal., and 31-gal. kegs. Per gallon, 35 cents. \$1.50 for kegs returnable.

You need not be afraid of the License Inspector, as it is absolutely free from alcohol, under Allen's guarantee. Send us your orders.

THE MACPHERSON FRUIT CO.

LIMITED.

493 Main St., Winnipeg



OUR PRICES
...ON...
RELIABLE
AIR-TIGHT HEATERS

ARE RIGHT.
Better get them Now.

MARSHALL-WELLS CO.
WHOLESALE HARDWARE,
WINNIPEG.

Sole Agents
L. G. Smith Famous Guns

THE WESTERN PACKING COMPANY

Our new abattoir on Alexander avenue is now completed and running, and we are ready to supply the trade both in the city and country with fresh killed meat of finest quality. Mail orders given prompt attention.

We are also open to buy live or dressed hogs and all kinds of pro-cue paying highest cash prices for same.

Abattoir and Offices
ALEXANDER AVENUE, - WINNIPEG

S. Greenshields, Son & Co.

Wholesale . . . MONTREAL
DRY GOODS
MEN'S FURNISHINGS
CARPES, ETC.

Wholesale Sample Rooms
412-414 McIntyre Block

Represented by—R. R. GALLAGHER, G. M. NEWTON, A. C. RUSSELL, J. E. WALKER.

+++++
A. C. LESLIE & CO.
HEADQUARTERS FOR
IRON, STEEL and METALS
WHOLESALE BUYERS
ONLY SUPPLIED

509 to 512 Merchants' Bank Building - MONTREAL
E. H. BISSETT, Agent, Winnipeg

+++++

A SQUARE HOUSE

WE WILL GIVE YOU A SQUARE DEAL ON ANY PRODUCE YOU SEND US.

Try us for all kinds of fruit in season. Strict personal supervision given to mail orders, and prompt shipments made. If you are not getting our price list on the 1st and 15th of each month, a post-card will ensure your receiving it.

THE IMPERIAL FRUIT & PRODUCE CO.
WINNIPEG.

Car Fancy Ontario Basket Pears
Just received.

New Honey
In Comb, Tins and Glass.

Cars Winter Apples
Arriving Next Week.

First car Ontario Apple Juice to arrive Nov. 4th

BRIGHT & JOHNSTON
Wholesale Fruits,
WINNIPEG

JOHN W. PECK & CO.
MONTREAL WINNIPEG VANCOUVER

Manufacturers of
Clothing
Furs
Shirts

Dealers in
Men's Furnishings,
Hats, Caps

Warerooms. Factory.
WINNIPEG, MAN. YARMOUTH, N. B.

The Redding Shoe Mfg. Co.

Wholesale Boots and Shoes

Does it pay to handle **SOLID LEATHER SHOES**? This is the question we ask every Merchant who wants to build up a reputation for selling the right class of goods.

Our goods are **ALL SOLID LEATHER**, and every pair **GUARANTEED**. We ask you to give us a trial order, if our travellers have not called on you, write us for price list, terms, etc.

WAREHOUSES:
137 BANNATYNE AVE. WINNIPEG

P. O. Box 755. Telephone 1347.

Maple Leaf Rubbers

Full stock on hand. Send in your sorting up orders. Also Men's Ladies' and Child's Felt Boots, Lumbermen's Sox, Moccasins and Mitts, Oil Tan and Hair Lined Larragans. Letter orders will have our careful attention; and filled promptly.

The Kilgour Rimer Co., Ltd.

BOOTS AND SHOES AND MAPLE LEAF RUBBERS.
87 PRINCESS STREET. WINNIPEG.

SHIP YOUR
RAW FURS
Hides, Deerskins and Seneca

TO
McMILLAN FUR AND WOOL COMPY
200 to 212 First Avenue North,
MINNEAPOLIS, MINN.

We are paying for thoroughly dry Seneca 50c for good quality, and 50c for very coarse or poor, delivered in Minn. capitals. Freight 1 1/2 in Winnipeg. Subject to change without notice.

No duty on raw furs or skins.

Duty of 15 per cent. of Winnipeg wholesale prices, less freight to Winnipeg, on green hides over 25 pounds, and dry hides over 12 pounds. Hides under these weights admitted free.

Wholesale Millinery

NEW HATS
NEW FEATHERS NEW ORNAMENTS

We have on hand a full line of our Celebrated Black Silk Velvets, all prices, also full range in colors. Our Stock of Velvetines, S'pale and Neck Ribbons is well assorted.

Write for samples or send a trial order.

THE D. McCALL COMPANY, Limited
280 NOTRE DAME AVE. WINNIPEG, MAN.
ALSO OTTAWA TORONTO MONTREAL

MANITOBA.

Wm. Riggs is opening a butcher shop at Grand View.

The Portage la Prairie Curling Club, is applying for incorporation.

The Souris Farmers' Elevator Co., of Souris, is applying for incorporation.

W. E. Harrop, harnessmaker, Oak River, has sold out his business to A. H. Blain.

R. A. Sanderson, of Treherne, has opened the confectionery business at Rathwell.

The Standard Weigher Company, Ltd., has been incorporated under the laws of Manitoba.

Owen Burdette is opening in the bakery business at Russell, Man. He has closed his little business.

J. F. Butcher, formerly of Hough & Campbell's office, Winnipeg, is opening a law office at Morris.

The Hoover Manufacturing Company, Winnipeg, has received authority to increase its capital stock from \$10,000 to \$30,000.

Fire damaged a frame building at Brandon, occupied by W. E. Clement, druggist, and R. P. McInnis, dentist, on 4th street last.

The store of T. T. A. Garland Company, at Portage la Prairie, was burglarized on the 4th. The thief has not been arrested.

The Ellis house, Manitow, which has been managed by Messrs. Shore, has been bought by J. W. Emery, of Grenfell, has leased the establishment for a term of years.

The business men of Killarney have formed a board of trade. T. Laddie has been elected president, H. Cross, vice-president, and Geo. B. Monteith, secretary-treasurer.

Letters patent have been issued to The Holman Meat Company, of Winnipeg, which is taking over the retail meat business of Holman Bros. and P. Gallagher & Sons.

The Canadian Thresherman Publishing Company, which is engaged in the business of publishing an implement and agricultural paper at Winnipeg, has received its letters patent. A new building has been erected for this company in which to carry on its business.

Glenmuth, one of the newer towns of Northwestern Manitoba, is experiencing rapid growth as the new railway line that point approaches completion. This town is on the new Neepawa-McCreary branch of the Canadian Northern.

J. A. E. Brown, of Portage la Prairie, have purchased a business site in Winnipeg on which it is reported they will build a large grocery and sale stable next spring. The site is on the corner of Pacific avenue and Princess street.

The Rapid City Power, Light and Woolen Manufacturing Co. is applying for a charter, the business to be carried on is to acquire water power on the Little Saskatchewan river, to build dams, erect poles, string wires and to permit power to light. The capital stock of the company is \$25,000.

The Gallagher Company is now in occupation of its new abattoir building and offices at Winnipeg and is building a business premises capable of turning out a large quantity of fresh meat daily. The Holman Co. has decided to carry the retail business so long carried by the Gallaghers.

The Brandon city council met on Monday night. The terms of the proposed agreement with the C. P. R. for an overhead bridge over its tracks in Brandon were discussed and certain alterations recommended. It was decided to make extensive improvements to the city's waterworks plant. Revenue will be sought to raise \$25,000 for his purpose.

W. E. Binlay, who for some time past has been managing the Winnipeg office of the International Correspondence Schools of Scranton, Pa., has returned and will be in Toronto this week. W. E. Bonner, formerly manager of the Brandon office of the school, has assumed charge of the Winnipeg branch with J. E. Lang, of Montreal, as assistant manager.

Chas. G. Craig, who for the past ten years has been western editor of the Farmer's Advocate, with office in Winnipeg, has been appointed vice in stock

commissioner for Manitoba by the Dominion government. In consequence he has withdrawn from the service of the Advocate. The occasion of his leaving this service was marked by a presentation on behalf of the company of a gold watch and an aim to Mr. Greig.

ASSINIBOIA.

R. Francis is opening a jewelry store at Arcola.

Excavation work for a new flour mill at Medicine Hat has commenced.

The Dundurn Tying Co., of Dundurn, is adding hardware to its stock.

G. H. Brown and T. Higgin are operating in general merchandise at Condes.

W. B. Minihnick is opening in groceries, fruits, drugs and stationery at Churchillburg.

W. E. Lawton and R. H. Scott have purchased A. L. Hopper's implement business at Alameda.

Mrs. R. S. Chapman is opening in fancy goods, millinery and ladies' furnishings at Maple Creek.

J. J. Heaslip has taken over the implement business formerly carried on by the Heaslip-Laird Co. Ltd., at Alameda.

F. O'Neil, hardware merchant, Moose Jaw, has formed a partnership with J. J. Heaslip, and the business is now carried on by O'Neil & Clausen.

A. E. Walker & Son, hardware merchants, Grenfell, have decided to erect a brick block next year in which to carry on their business.

ALBERTA.

H. L. Higgs has bought the drug business of R. C. Ward at Wetaskiwin.

W. H. Sharpe has bought the general furnishings business of L. R. Rix at Wetaskiwin.

Field has bought the grocery business of Wm. Hest at Edmonton, and will carry it on in future.

The Northwest Coal & Coke Company, of Medicine Hat, is applying for incorporation for the purpose of developing Alberta coal lands.

The board of general engineers is advertising for a supply of the best galvanizing iron, lead pipe, fittings, service pipe needed for its proposed waterworks and sewer service.

The board of trade council of Edmonton met a few days ago to consider several important questions. A market for Alberta oats is wanted, and as a result of the discussion on this subject, a letter has been sent to the Dominion government for a resident grain inspector in Alberta. A letter to Mackenzie & Mann urging the extension of the C. N. R. eastward from Edmonton was decided upon.

SASKATCHEWAN.

B. C. DeGeer has decided to open up a butcher shop at Saskatoon.

Wm. Rosthern, general merchant, Rosthern, has sold his stock to Jacob Janzen.

H. Baker, formerly of Stratford, Ont., has decided to open a carriage and blacksmith shop at Saskatoon.

NORTHWESTERN ONTARIO.

It is possible that a mill for cutting railway ties may be erected at Keweenaw.

Business in Rat Portage is brisk. Large quantities of supplies are being shipped to the lumber and mining camps.

Freahel & Abercrombie have purchased the store and business of Fort Frances Drug and Book Company, and have taken possession.

The Minnesota Harvester Company has been incorporated at St. Paul with a capital of \$6,000,000. The incorporators are: A. Severance, Robert E. Olds and Charles W. Withee, who, with E. F. Huggins and Alfred E. Berg, compose the board of directors. These are all St. Paul men, and the identity of the principal investors is not disclosed. Vice-President is not disclosed.

The Grass Twine Company, has issued a statement that the new company will be identical with the old one, and will be a combination of harvester companies.

FINANCIAL

Winnipeg Bank Clearings.

Returns for the Winnipeg clearing house for the six ending Thursday shows as follows: Week ending Nov. 6, 1902, \$5,888,602 Corresponding week, 1901, 4,558,080 Corresponding week, 1900, 2,745,778

Financial Notes.

H. C. Maguire is to be accountant in the new Shoal Lake, Man, branch of the Union Bank.

J. Grisdale, formerly of Winnipeg, has been appointed manager of the new branch of the Dominion Bank, at Selkirk, Man.

The Canadian Bank of Commerce has leased premises at Gilbert Plains, Man, and will open for business there at an early date.

The Dominion Bank has purchased the building and business of C. R. Tryon & Co., bankers at Grenfell, Assa., and will open up about the 17th of November.

Dominion government savings bank transactions for the month ending Oct. 31, 1902, were as follows: \$25,624,044, withdrawals, \$31,368,52; deposits exceeded withdrawals, \$1,256,488.

A. G. Campbell, postmaster of the Colonial Investment & Loan Co., of Toronto, was in Winnipeg this week on his way to the coast on a general inspection of agencies.

H. O'Reilly, who succeeds O. S. Clarke as manager of the Vancouver branch of Bank of Hamilton, arrived there from Niagara Falls a few days ago. Mr. Clarke will leave for Winnipeg.

H. Jemmett, manager of the new Canadian Bank of Commerce, at Grandview, Man, went to Grandview from Winnipeg to view the branch of the bank, where he has spent a year and a half.

A by-law to create a debt of \$20,000 for the purpose of equipping three suburban fire halls received its first and second readings in the Winnipeg city council this week. It will be submitted to the ratepayers at the forthcoming municipal election.

The inland revenue returns at Winnipeg for Oct., 1902, were as follows: Spirits, \$50,583.79; mail, \$2,386.83; tobacco, \$26,012.12; raw leaf (tobacco), \$1,934.46; cigars, \$3,245.94; vinegar, \$143.33; excise, \$123.; other receipts, \$10, total, \$84,001.31. Oct., 1901, \$96,329.18. Increase, \$11,577.18.

The Douglas, Lacey Co. of New York, has just distributed the quarterly dividends from the various investments in southern and western states in which it is interested. The total amount of these dividends is \$45,040, of which a fair percentage falls to investors in Western Canada.

The directors of the Manitoba and Northwest Loan Co., which some time ago determined to close its business met at Toronto on Thursday.

The position of affairs now justifies the directors in paying out to the holders their holdings to the shareholders, and it is confidently expected that the remaining assets will furnish another payment of 70 per cent., or 120 in all.

Bradstreet's: That the bulk of the bonds of the United States are held at home has long been known, but it remains for the last annual report of the registrar of the treasury to show how strikingly accurate this amount is in the hands of foreign investors. It is shown, for instance, that out of a total of \$78,924,350 of bonds only \$10,062,850 is owned by foreigners, and of this latter amount only \$3,444,800 is held by individual foreign holders, because \$12,578,000 is deposited by foreign insurance companies with superintendents of insurance in the various States.

Insurance Notes.

The Mennonites in the settlement east of the Red River in Manitoba, have a mutual fire insurance company which is confined to their own sect. The assessments for this company will be very low, seldom exceeding 1 1/2 mills on the dollar.

Sir Wm. Mulock, postmaster general of Canada, says that the Lloyds Companies have agreed to send a reliable sea captain to inspect the St. Lawrence navigation route with a view to suggesting improvements to the Dominion government which will secure a reduction in insurance rates.

Prices a Year Ago.

Following were Winnipeg prices this date compared with prices a year ago: Wheat—No. 1 hard wheat closed 72c in store Port William. Flour—Jobbing price per sack; Patent, \$2; best bakers, \$1.82. Mutton—\$1.50 per ton; shorts, \$1.50 per ton delivered. Hides—No. 1, \$14.50; No. 2, \$14.00; No. 3, \$13.50. Cattle—Cattle on track, 25 to 34c per pound. Pigs—11c net for fresh stock. Potatoes—New, 10 to 12c per bushel. Dressed Meats—Fresh, 5 to 5 1/2c for city dressed; 4 to 5c for country; 4 to 5c; mutton, fresh, 8 to 10c; mutton, fresh, 8 to 10c; mutton, fresh, 8 to 10c. Poultry—Dressed chickens, 9 to 10c per pound; ducks 16c per pound; turkeys, 12 1/2 to 15c. Hides—No. 1, \$14.50; No. 2, \$14.00; No. 3, \$13.50. Nominal. Seneca Root—11c. Sausages—10c per lb. per ton on cars. Live Stock—Cattle, 2 1/2 to 3 1/2c; sheep, yearlings, \$11 to 16c per head; sheep, 4c; hogs, 6c; packers price.

Drink and Smoke Bill.

Ottawa, Nov. 6.—The annual report of inland revenue department for the year ending June 30 last was issued today. The quantity of spirits produced during the year was 3,254,147 proof gallons, as compared with 2,625,708 proof gallons produced in the previous fiscal year. The revenue for this year was \$113,458,571, compared with \$104,688,708 last year, an increase of \$8,769,863. The raw material used in the production of spirits during the year was 14,287,871 pounds of Indian corn; 9,449,057 pounds of rye, 3,462,966 pounds of malt, 415,965 of oats and 29,470 of wheat.

The people drank more spirits and became less temperate in 1902 than in the previous year. The quantity of spirits consumed was 706, against 705 last year, or 102, compared with 4,737, and 460 wine and 106 in 1901.

The quantities of tobacco was the same as in 1901, the figures being 2,404.

The number of cigars used during the year was 151,780,570, compared with 141,046,889 last year.

The cigarettes were 134,230,614 compared with 121,383,584 last year so that while there was considerable more cigars and cigarettes used during the year, the same quantity of tobacco was consumed.

Railway and Traffic Matters.

D. D. Mann, of the Canadian Northern Railway, was in Winnipeg early this week. He stated while here his company would probably build either a north or station, or station on the corner of Main and Water streets, Winnipeg. Details have not yet been considered.

The first changes in administration of the C. N. R. in connection with A. E. James superintendency is the dividing up the system into four divisional superintendents. J. T. Arundel, of the C. P. R., has been appointed as superintendent of the lines east of Winnipeg, with headquarters here, and A. J. Gorrie, general superintendent of the Winnipeg, goes to Fort William as superintendent of the lines east of Winnipeg.

The Medicine Hat, Assa., News says the rush for land in that district is somewhat slackened since the C. P. R. Cochrans reports about one hundred homestead entries for the month.

The Canadian Pacific Railway Co. has issued notice to the public that its package freight for shipment eastward, lake and rail route, will not be reduced until the first of January.

Jaw and points west thereof, or from points on the Prince Albert branch. Eastward shipments of goods will be received up to Nov. 22. After Nov. 11, car loads must be "red carded."

A FISH WAREHOUSE.

Among the new warehouses erected in Winnipeg this year is the block on Main street, which will hereafter be the headquarters for the business of W. J. Guest, dealer in fish, game, poultry, etc. This building is located on Main street, near Mr. Guest's old stand, and will be known as number 602. It is a three-story brick building, with handsome stone trimmings, making a fine front. The ground floor is 22 1/2 feet wide, and the ground floor front has been fitted up in a handsome style for the retail trade, with marble slab counters and every convenience. The ceiling of the room is a handsome design in steel plates. The window has been attractively built for displaying goods and is inlaid with mantle tiles.

Back of the store is the business and private office, and in the rear of this again is the shipping and stock room for the jobbing trade.

The basement, which is reached by the elevator from the shipping room, is fitted up especially for the fish and poultry trade. In the basement is located a refrigerator which can be kept cool enough to freeze a carcass of beef in midsummer. All surplus stock about the premises will be kept here, so that the warmest weather will have no influence toward deteriorating the stock carried, which is mostly of a very perishable nature. All cleaning and dressing of poultry, etc., will be done in the basement, where the solid cement floor is so arranged that the hose can be turned on at any time and the entire place washed out and into the sewer, thus keeping the premises sweet and clean. The heating, lighting and other appointments are thoroughly modern, and Mr. Guest, who is occupying the building next week, has up-to-date premises, peculiarly adapted to his business.

W. J. Guest is the oldest fish dealer in the trade here. He started in business in Winnipeg in a small retail way in 1880, and his business has steadily grown from that time onward. All this time he has occupied the premises at 602 Main street, which couple of doors north of his new warehouse, except this summer, when he was compelled to move to allow of the construction of new blocks. He had his first freezer here in 1892, and two more have been added since, giving him now three freezers, with a capacity of seven car loads, not including the new freezer in the basement of his new store. The freezers, stables, poultry yard, etc., are located near the Red river, on Alexander street. A large stock of goods is carried in these freezers for the city and country trade. Mr. Guest has built up quite a large jobbing trade in oysters, haddies and other lines of fish, of which he carries everything in season. He is largely interested in the Lake Winnipeg fisheries, being a member of the Northern Fish Co., which was established a couple of years ago for operating on this lake. This company has a large freezer at Selkirk, and a complete fishing plant, which is kept busy during the fishing season. The company does a large export trade in fish direct, while the fish are supplied to the home market through Mr. Guest's Winnipeg house. Mr. Guest also operates a plant during the fishing season on Lake Manitoba, on his own account.

The new premises will give better facilities for the growing wholesale trade, which Mr. Guest is now doing. A large stock of oysters and fish of all kinds in season will be carried, so that orders for the whole and department can be promptly filled. Mr. Guest has been brought up from a boy in the fish business, and has been all his life time handling fish. Before coming to Winnipeg he was engaged in the fish industry on Lake Huron. He is known among his friends here as a strictly honorable business man, and one with whom it is a pleasure to do business. He knows nothing of the so-called little tricks of the trade, and will do business on a straightforward basis or not at all.

One of the most extensive farmers in Manitoba is Charles Thomas, near Hartney. Twenty-five thousand one hundred bushels of No. 1 hard wheat were threshed from eleven hundred acres on his farm this year.

London Fur Sales.

C. M. Lampon & Co. offered at their October sales the following articles, according to the New York Fur Trade Review:

White fox, 1,500; gray fox, 1,100; red fox, 1,000; blue fox, 200; silver fox, 20; Japanese fox, 3,000; skunk, 3,500; marten, 4,000; otter, 700; 1,000; beaver, 1,000; raccoon, 2,000; mink, 8,000; muskrat, 300,000; wild-cat, 500; bear, 1,000; wolf, 1,800; dry hilt seal, 2,500; squirrel, 5,000; Russian sable, 1,500; real chinchilla, 1,500; bastard chinchilla, 35,000; Australian opossum, 300,000; wallaby, 150,000; wombat, 35,000; and 7,000

Gray fox, 10 per cent. higher than March.
Silver fox, 20 per cent. higher than March.
White fox, 10 per cent. higher than March.
Badger, 50 per cent. higher than March.
Lynx, 10 per cent. higher than March.
Wolf, 10 per cent. higher than March.
Japanese mink, 50 per cent. higher than June.
Muskrat, 20 per cent. higher than January.
Black muskrat, same as in January. Same as in March—Raccoon, mink,

coast. Their business in the West, he says, has grown rapidly of late years, and orders now booked for the spring trade show a very large increase over any previous year. They give close attention to the western trade, and with that object in view, in some lines will be carried in Winnipeg. Rooms in the Baldwin block here were recently secured, and will give more space for the storage of the Montreal warehouse of the firm, Mr. Cheesbrough, and they have new premises on St. Patrick street in that city, where they will have two or three times more space than in their old warehouse.

Dairy Trade Notes.

Creamery butter is very scarce in New York and is selling as high as 25c per pound.

A firm cheese market is anticipated along to light stocks in both Britain and Canada. Finest Ontario cheese is now worth 11 1/2c and Quebec 11 1/2c. September cheese is selling at 54s. 6d. in British markets.

1,750,000,000

Taking the number of boxes of "C" brand horse nails we have sold since we commenced their manufacture in 1865, or thirty-seven years ago, we calculate that the total number of nails we have made (taking the average size, No. 8), is to be one billion seven hundred and fifty millions.

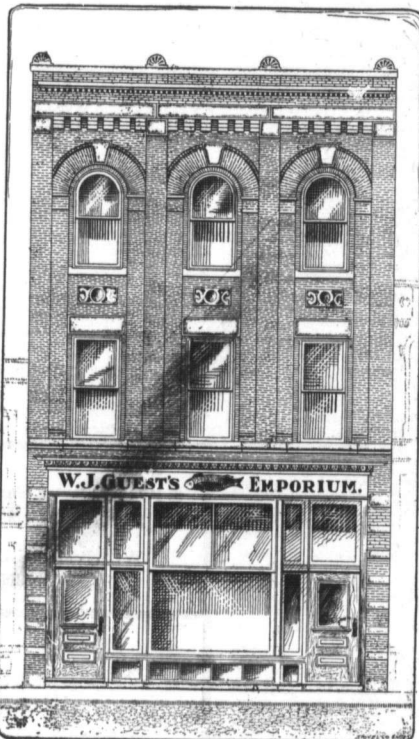
Now that output constitutes a pretty fair experience in the manufacture of horse nails. The buyer of the "C" brand gets the benefit of our experience in purchasing from us. He has the assurance that the nail which has maintained its hold upon the Canadian market for thirty-seven years must have merit to back it up. And it is simply because of their superior merits that they are more largely sold than any other brand of horse nails made or sold in Canada, or for that matter as many as any other two makers in Canada.

All our competitors claim their nails are "just as good," of course. But: there's the supreme test. Why can they not sell their productions on even terms with ours? Why do they have to undersell in the open market? The truth must be told—They don't value their goods as being equal to our "C" brand and so have to sell them for what they are worth, and that is for less money than ours. We sell the best material known or used in the world for making horse nails into our "C" brand. Money cannot purchase in Sweden anything better. We forge our nails from the solid rod while at a white heat, and complete the finishing processes by machinery used nowhere else on this continent. All our nails are finally subjected to a careful hand sorting, and we warrant our "C" brand, as the result, to be absolutely free from imperfections, and shall replace any found otherwise, without cost to the purchaser.

Remember that to effect a saving of one cent on the 32 nails required for a full set of shoes, you and we warrant our "C" brand, as the result, to be absolutely free from imperfections, and shall replace any found otherwise, without cost to the purchaser.

We will appreciate your preference in ordering, to state that you want the "C" brand made by the

CANADA HORSE NAIL CO.
MONTREAL.



NEW WAREHOUSE OF W. J. GUEST.

No. 600 Main St., Winnipeg.

kangaroo, salted fur seals, Cape Horn and Cape of Good Hope, 2,800 skins.

Results by cable: Sifted fox, 20 per cent. lower than March.

Skunk, 15 per cent. lower than March.

Civet cat, 15 per cent. lower than March.

Otter, 10 per cent. lower than March.

Tuscan sable, 10 per cent. lower than March.

Black bear, 20 per cent. lower than March.

Brown bear, 30 per cent. lower than March.

Grizzly bear, 20 per cent. lower than March.

Russian bear, 20 per cent. lower than March.

Beaver, 15 per cent. lower than January.

Chinchilla, real, 10 per cent. lower than June.

Chinchilla, bastard, 10 per cent. lower than June.

blue fox, wildcat, house cat, marten, wolverine an; dry hair seal.

Fur seals, salted—Cape Horn and Cape of Good Hope, same as in June.

Australian Fur—Opossum, 20; kangaroo, 20; wallaby, 50 per cent. higher than in October, 1901; wombat, same as in October, 1901.

Visiting the West.

Among the visitors to Winnipeg this week was Mr. W. A. Cheesbrough, of Kyle, Cheesbrough & Co., wholesale dry goods Montreal. This is Mr. Cheesbrough's first visit to the West, and he was greatly impressed with the future possibilities of this country, from what he has seen and heard since coming west. He visited Portage la Prairie and Neepawa, before returning eastward on Thursday. Mr. Cheesbrough has seen enough of the country to make him anxious to return again during the summer season and make the trip through to the

STATISTICAL WHEAT REPORT.

WHEAT IN CANADA.

Stocks of wheat in Canada at principal points of accumulation are reported as follows:

Montreal	128,000
Toronto	27,000
Lapoint Harbor, Ont.	12,000
Cape Breton	10,000
Kingston	75,000
Port William, Port Arthur and Keswitin	2,255,000
Winnipeg	200,000
Manitoba elevators	8,500,000
Total Oct. 27	11,450,000
Total previous week	10,929,000
Total a year ago	7,982,000

BRAIDSTREET'S REPORT OF STOCKS

Total stocks in the United States and Canada east of the Rocky Mountains, as reported by Braidstreet's Oct. 27, were 58,515,000 bushels, as against 54,528,000 bushels the previous week.

Total stocks in the United States and Canada a year ago were 43,181,000 bushels, according to Braidstreet's report.

Stocks of wheat at Pacific coast ports on Oct. 27 were 2,670,000 bushels.

THE VISIBLE SUPPLY.

The Chicago visible supply statement of stocks in the United States and Canada, east of the Rocky Mountains, for the week ending Oct. 27, was 2,330,000 bushels, being an increase of 1,282,000 from a year ago. The year supply was 49,430,000 bushels, two years ago 49,020,000 bushels, three years ago 41,000,000 bushels, four years ago 17,000,000 bushels, five years ago 29,204,000.

The visible supply of oats in the United States and Canada, east of the Rocky Mountains is 7,255,000 bushels, compared with 6,000,000 bushels a year ago. The visible supply of corn is 2,584,000 bushels, compared with 2,000,000 bushels a year ago, according to the Chicago statement.

WORLD'S WHEAT STOCKS.

Stocks of wheat in America and Europe and abroad for Europe Oct. 1 in each year for a series of years, were as follows—Braidstreet's report:

Year	Bushels
1902	129,000,000
1901	135,000,000
1900	135,000,000
1899	135,000,000
1898	67,000,000
1897	35,000,000
1896	127,000,000

WHEAT MOVEMENT.

The following table gives the receipts of wheat at the four principal United States and foreign markets, from the beginning of the crop movement, Aug. 1, 1902, to date, compared with the same period of last year.

City	1902	1901
Minneapolis	20,618,270	31,161,626
St. Louis	3,428,090	3,726,750
Duluth	19,595,382	18,900,877
Total	33,641,742	53,815,153

This Crop Last Crop.

City	1902	1901
Toledo	8,869,212	5,201,883
St. Louis	19,823,520	12,527,148
Detroit	1,900,343	1,728,983
Kansas City	15,454,360	2,497,520
Total	46,177,435	32,957,534

GRAIN STOCKS AT LAKE PORTS.

Port William.

Stocks of grain in C. P. R. elevators at Port William on Monday, Nov. 3, were as follows:

Wheat—No. 1 hard, 824,652 bushels; No. 1 northern, 425,708 bushels; No. 2 northern, 144,297 bushels; No. 3 northern, 167,335 bushels; other grades, 49,050 bushels, making a total of wheat of 1,634,848 bushels.

Oats—No. 2 white, 80,210 bushels.

Barley—None.

Receipts of wheat at Fort William during the week amounted to 1,430,000 bushels; and shipments to 1,360,000 bushels. Receipts of oats 3,000 bushels and shipments 3,193 bushels.

Port Arthur.

Stocks in store at King's elevator, Port Arthur, on Nov. 3, were:

Wheat—No. 1 hard, 27,914 bushels; No. 1 northern, 15,063 bushels; No. 2 northern, 281 bushels; other grades, 123,093 bushels; total, 172,653 bushels.

Oats—None.

Barley—None.

There were no receipts or shipments from this elevator owing to accident to its machinery.

Stock of grain in store at the Canadian Northern elevator at Port Arthur on Nov. 3, were as follows:

Wheat—No. 1 hard, 261,898 bushels, No. 1 northern, 182,061 bushels; No. 2 northern, 84,147 bushels; No. 3 northern, 14,212 bushels; No. 4, 13,027 bushels; feed, 2,882 bushels; rejected, 2,045 bushels; making a total of 550,964 bushels.

Oats—No. 2 white, 1,512 bushels; feed, 1,055 bushels; total, 3,117 bushels.

Barley—384 bushels.

Receipts of wheat for the week were 456,311 bushels; shipped during the week, 302,192 bushels.

From these figures it will be seen that the three elevator plants received during the week, 1,805,007 bushels of wheat and shipped 1,752,453 bushels. During the previous week receipts amounted to 1,853,201 bushels, and shipments to 1,863,201 bushels.

Manitoba Wheat Stocks.

There were 2,287,445 bushels of wheat in store at Fort William and Port Arthur on Nov. 3. Receipts for the week were 1,850,067 bushels, and shipments 1,752,453 bushels. A year ago stocks in store at Fort William were 224,535 bushels. Stocks in store at Port William, Port Arthur, Keswitin, Winnipeg and interior points are estimated approximately at 1,085,000 bushels, compared with 7,658,000 a year ago; 2,256,000 bushels two years ago, 1,500,000 bushels three years ago, and 3,000,000 bushels four years ago.

Grain and Milling Notes.

The Winnipeg grain exchange now shops a restaurant and also a barber shop.

Innes and Hill, of the Hartney roller mills are preparing to enlarge their mill and increase its capacity.

All of the United States Grain Exchanges were closed on Tuesday, that being the date of the state elections.

L. A. Tully, formerly of Winnipeg, has opened an office in Montreal in the interests of the Independent Grain Company of Winnipeg.

It is expected that the foundation for the new C. P. R. elevator at Port William will be ready for the superstructure about the end of the month.

The first consignment of bonded wheat for the season, left the port of Duluth yesterday, says a Duluth correspondent of the 30th ult. The cargo consisted of 74,000 bushels of the finest grade of Northwest Canadian fall grain.

Chicago board of trade quotations are again being posted regularly at the Winnipeg grain exchange. These quotations have been conspicuous by their absence for some months, owing to the efforts of the Chicago board to keep them out of the hands of bucket shops.

A San Francisco report of the 6th inst. says: "A deal is practically accomplished for the amalgamation of all the extensive flouring interests on the Pacific coast. It will take in the plants of Washington, Oregon and California, and will call into existence one large corporation, with a capital of \$20,000,000."

Beerheims says: "The United Kingdom is beginning to realize that European requirements of wheat are much larger than expected and consumption is larger than usual on account of high prices of provisions. United Kingdom receipts for two weeks have been very heavy, yet very little has been stored, demand having kept up with the supply."

New Coal Company.

The Northwest Coal and Coke Company is the name of a new company formed in Regina. The application for incorporation has been sent to Regina. The company is to have a capital stock of three million dollars. The head office for the company for the present is to be at Mached, Alberta. The company are acquiring extensive areas of coal lands in the Territories, and will engage in operations as coal and petroleum miners and coke manufacturers.

It is understood the Winnipeg Electric Street Railway Company has now on reconsideration agreed that the more than six days in the week, in the event of a Sunday car service being established.

Thompson Sons & Co.

(Licensed and Bonded.)

GRAIN COMMISSION MERCHANTS

We Handle

Wheat, Oats, Barley and Flax

On Commission Only.

Merchants, Millers and country grain dealers having grain to dispose of this season will find it to their advantage to employ us. The prices we obtain and our facilities for doing business are the best. Returns sent promptly. Advances made on bills of Lading up to 90 per cent of their value. We furnish our regular customers with a daily market report free.

We only handle grain shipped or for shipment to terminal elevators, and will not send offers on grain stored in country elevators.

Members / Winnipeg Grain & Produce Exchange.

Members / Winnipeg Grain & Produce Clearing Association.

Bankers—Union Bank of Canada.

Write for Terms, Prices, Etc. GRAIN EXCHANGE, WINNIPEG, MAN.

WINNIPEG GRAIN AND PRODUCE EXCHANGE

C. A. YOUNG, President.
GEO. V. HARTING, CHAS. N. BELL, Vice-President. Sec'y-Treas.

KIRKPATRICK & COOKSON

Montreal.
Consignments of Grain and Country Produce solicited.
F. O. B. Offers of Wheat, Barley, Oats, etc., requested.
Established 1880, Manitoba Grain Code used.

THE WINNIPEG ELEVATOR CO. LIMITED

GRAIN EXPORTERS
OFFICE: GRAIN EXCHANGE, WINNIPEG.

W. GIBBINS & CO.

GRAIN BROKERS AND DEALERS.
Grain Exchange, Winnipeg.

E. O'REILLY

Of Jas. Richardson & Sons.
GRAIN EXPORTERS.
Offices: Kingston, Toronto and Grain Exchange, Winnipeg.
Cans or block lots. Please ask for quotations. Reference, Merchants Bank.

The Northern Elevator Co. LIMITED

GRAIN HEAD OFFICE WINNIPEG.

BRANCH OFFICES:

MONTEAL NEW YORK LONDON, ENGL.

ROBT. MUIR & CO.

GRAIN DEALERS AND MILLERS
SHIPPERS OF WHEAT, OATS, BARLEY, FLAX, FLOUR, RICE, SHORTS, CHOP
Buy or sell on commission. Before buying or selling grain in any lot, write or wire us for quotations. Advances made on consignments. Licensed and bonded.
WINNIPEG, M. N.

ALEX. McFEE & CO.

GRAIN EXPORTERS.
MONTEAL AND WINNIPEG.
C. A. YOUNG, Manager.

THE DOMINION ELEVATOR CO. LIMITED

GRAIN EXPORTERS
OFFICE: GRAIN EXCHANGE WINNIPEG

JAS. CARRUTHERS & CO. LIMITED.

GRAIN EXPORTERS
MONTEAL TORONTO WINNIPEG

H. D. METCALFE

GRAIN EXPORTER
548 GRAIN EXCHANGE 12 STOCK EXCHANGE
WINNIPEG MONTEAL
Direct connection with European markets.



Correspondence Solicited.

The Mutual Life of Canada

(Formerly the ON TARIO MUTUAL LIFE)

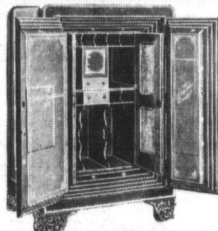
Head Office, - - - - - Waterloo

Expense Rate per cent. to Total Income, 1901:

In 5 oldest Canadian Life Companies, average.....22.05 per cent
 In 12 other Canadian Life Companies, average.....50.39 per cent
 In the **MUTUAL LIFE OF CANADA**.....16.88 per cent
 (Being nearly 2 per cent. lower than the lowest of them.)
 In 1900 this Company **LED** all Canadian Life Companies in the amount of new business written in Canada, and last year (1901) it **LED** them all in the amount of dividends paid to Policy-holders.

P. D. McKINNON, Provincial Manager.

Bank of Hamilton Chambers. - - - - - WINNIPEG.



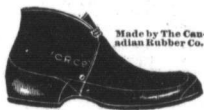
SAFES

Built by the Goldie & McCulloch Co., are thicker in the walls, and are more fire-proof than any other make.

We carry a stock. Write for prices.

BURRIDGE & COOPER,
 124 Princess St., Winnipeg.

WE HAVE PREPARED



Made by The Canadian Rubber Co.

FOR A LARGE SORTING TRADE THIS SEASON

Our heavy stock of RUBBER FOOTWEAR will enable us to ship sorting orders the same day as received.

You will save time by sending your orders direct to

THE CANADIAN RUBBER CO.

OF MONTREAL

WINNIPEG BRANCH, P. O. Box 253.

Harry Leadlay. Allison Leadlay.

H. & A. LEADLAY

Successors To

TORONTO HIDE & WOOL CO.

Dealers In

Hides, Wool, Sheepskins, Tallow, Etc.

298 Ross Ave. - WINNIPEG, MAN.

Consignments Solicited.

The Globe Casket London, Ont. Company

Special to their Manitoba, Northwest and British Columbia Patron.

Our Mr. J. H. Glass and Mr. J. Harry Glass are now in their respective territories, and will call upon you with a most complete range of soon with a most complete range of the best and latest goods known to the trade. The actual date of their visit will be announced by post card.

Try our celebrated "Globe Embalming Fluid."

Kindly reserve your esteemed orders.

THE GLOBE CASKET COMPANY

TOYS, DOLLS, Etc.

Newest Lines

Specially selected for General Store Trade.

Alarm Clocks

Cased Pipes

Playing Cards

Mouth Organs

Pocket Knives

Fancy Perfumes

Wallets and Purses

Fountain Pens

Wrapping Papers, Bags, Stationery, Smallwares

ORDERS BY MAIL ARE CAREFULLY ATTENDED TO

McALLISTER & WATTS, - WINNIPEG

The first snow of the season reached the Red river valley on Tuesday morning of this week, when enough fell to whiten the ground.

Diminished quantity and doubtful quality is the prediction from the wine districts of Europe regarding the vintage of 1902.

Snow fell in the valley of the North Saskatchewan on Sunday, Nov. 2. The fall was light at Edmonton, but heavy at Prince Albert.

Weather Sage Foster predicts that the temperature of the week ending Nov. 10 will average above normal in the Northwest.

PRESIDENT SHAUGHNESSY ON

FREIGHT RATES.

Montreal, Nov. 3.—(By Thomas Shaughnessy, president of the Canadian Pacific, has addressed the following letter to President Russell of the Winnipeg board of trade:

John Russell, Esq.,
President Winnipeg Board of Trade,
Winnipeg, Man.

Dear Sir:—Personally and officially, it is an always a pleasure to desire to actively co-operate with the Winnipeg Board of Trade, and with other similar organizations in Manitoba and the West, in everything calculated to promote the material interests of the country of which the Canadian Pacific Railway company has so much at stake, but I must confess my inability to understand why the Winnipeg Board of Trade should have assumed the initiative in urging upon this company acquiescence in the policy of the Canadian Northern company in the matter of rates for the carriage of wheat. Surely, it might be taken for granted that the company, for selfish reasons, if no others, would meet the lower rate of its competitor just as soon as the maintenance of the higher rate were likely, as stated in your resolution, "to have a very detrimental effect on all traders doing business in Canadian Pacific towns so situated, the effect being to draw the trade away from them and build up the Canadian Northern towns adjacent. If, without regard to other considerations, as a proposition in the abstract, your board has represented to the company that the rates now prevailing for the carriage of wheat to Lake Superior are unduly high and should be reduced, we would have been quite prepared to discuss the subject in detail and to have laid before you our reasons for believing our rates to be not only fair, but exceedingly low, as compared with the rates received by other railway companies in corresponding territory for the carriage of the same traffic.

It is quite true that the company, when negotiating with the government of Manitoba for the lease of the Northern Pacific lines, offered, as a feature of the proposed arrangement, to make a gradual reduction in its wheat rates, year by year, to a basis of 10c per 100-

lbs. in 1906, and to make specific reductions in the rates on some other commodities. The increase in the volume of contributed traffic that would result, and probable immunity from further unfair and unbusinesslike competition of railways constructed almost entirely at the expense of government, was our justification for the proposal.

However, the government apparently thought it in the best interests of the province that a different arrangement should be made, and, as a consequence, the Northern Pacific lines were leased to the Canadian Northern company, the government at the same time assuming an enormous contingent liability in connection with the bonds covering the Canadian Northern property. As a consideration for this and other concessions, the Canadian Northern company, who had everything to gain and nothing to lose by securing a guarantee for its bonds, entered into an undertaking to reduce its grain rates 2c per 100 lbs. the present time and 2c more later on. Surely, no reasonable man will contend that the action of the provincial government imposed upon the Canadian Pacific an obligation to make any similar reduction in its rates as a recognition of favors granted to its competitor.

If, however, the maintenance of the higher rate were injurious to the interests of grain producers along the Canadian Pacific lines by compelling them to accept for their crops a price 2c per 100 lbs. less than was being paid where the lower rate prevailed, there might be just grounds for complaint, but has this been the case? On the contrary, it is not a fact that the farmers along the Canadian Pacific lines, in territory contiguous to the Canadian Northern lines, have been and are receiving just as high prices for their wheat? Indeed, to go a little bit further, is it not a fact that these reductions made in the grain rates from time to time have had but little effect on the prices paid to farmers for their wheat? Two cents per 100 lbs. is equivalent to one and one-fifth cents per bushel. If we take the prices paid yesterday at various stations in the grain-growing districts for the like

quality of wheat, we find that the same prices prevailed at Carberry, Swanburg, Indian Head, Morris, Emerson, Gresham, Melville and Neepawa, although the rate from some of these points to Lake Superior is 40c per 100 lbs. higher than from others. In other words, the farmer at Indian Head, whose rate to Fort William is 19c, receives exactly the same price for his wheat as the farmer at Morris, whose rate is 15c per 100 lbs., and in this connection, let it be observed that Indian Head is a local station on the Canadian Pacific, while Morris is a competitive point with the Canadian Northern. The prices at Oak Lake, Carman and Hartney are alike for the same quality of wheat, although Oak Lake takes the 18c rate while the Carman rate is only 15c, and Carman, too, is a point common to the Canadian Northern as well as the Canadian Pacific. These comparisons, which apply to almost all stations in the grain district, can be followed back, day by day, to the beginning of the grain season. Another striking feature is the fact that the prices paid at stations for wheat since the first of October, in many cases, ranged from 1c to 2c per bushel higher when the Fort William quotations were 68½c per bushel than they did on the days when the Fort William quotations were 72c per bushel, and when the difference in Duluth prices was proportionately the same. In many instances, this represented a margin at grain stations of four or five cents per bushel, or several times the difference in freight rates to which your resolutions have reference.

Now I know that your resolutions were not framed in any spirit of hostility to the company, but with a view to securing for the farmer the increased price for his crops that would be received by the merchant and manufacturers of the country, like the farmer, these resolutions were framed in having the purchasing power of the farmer increased to the highest possible limit, and I am sure, therefore, that your board will, if any feasible plan can be suggested, make every endeavor to have the advantages of reductions in grain rates go to the farmers instead of being absorbed in marketing charges. To this end

you may be assured of our most earnest co-operation.

While it is our determination that settlements along the lines shall not be prejudiced by any disparity in rates, we do not, at the moment, feel that it is necessary to discuss in detail our tariff, for the reasons given in the earlier part of my letter and because our charges are now on a very low basis.

In your resolutions you quote the rates prevailing at Duluth for wheat, Chicago, as a fair basis for the rate between Winnipeg and Fort William. There is no propriety in making such a comparison. The railway companies between the two former points serve an old well-settled district yielding a large amount of local traffic and a revenue per mile of railway very much in excess of any section of the Canadian Pacific. But wheat is not shipped in any quantity from St. Paul to Chicago. Minneapolis is a great milling point, and, with Duluth, constitutes the market for any wheat that might come on St. Paul. Wheat from Minnesota and the Dakotas goes to Minneapolis or Duluth for milling purposes, or to Duluth for shipment by water in bulk, just as wheat from the Canadian Northwest goes to Winnipeg, Keewauwin and other places for milling purposes, or to Fort William for shipment by water to the east. Therefore, in making a comparison of rates we should select grain stations on the lines of the Canadian Northern and Northern Pacific where the wages, cost of supplies and other conditions are similar to our own, and compare the rates from these points on the Canadian Pacific to Fort William. The distance from Neche, on the Great Northern, to Duluth is about 35 miles, and the rate is 15c per 100 pounds, exactly the same as our rate from Emerson to Fort William, a distance of 50 miles. The rate from Minto, North Dakota, to Duluth, a distance of 50 miles, is 15c, exactly the same as the Canadian Pacific rate from Ekhorn to Fort William, a distance of 52, but the Great Northern rate from Des Lacs, the next station west of Minto and 515 miles from Duluth, is 18c, while the Canadian Pacific rate is 15c, and continues westward as far as Brandon, a distance from Fort William of 180 miles.

These comparisons could be multiplied indefinitely, but as the tariff and distance tables are public property, it will make the comparison for his own information.

I merely wish to emphasize the fact that the farmers living along the lines of the Canadian Pacific in Northwestern

Comparison as a merchant of Boeckh's BRUSHES and BROOMS

Compare the flimsily made goods which consumers will not ask for the second time, and which are so much dead and wasted stock to the merchant, with Boeckh's carefully made Brushes and Brooms, and you will find that comparison is a staunch friend of ours.

We know our goods and know that they will satisfy progressive dealers and critical consumers. We boom business by offering business boomers.

UNITED FACTORIES, limited

Head Office: TORONTO

One purchase of a Boeckh Broom makes steady customer.

Operating:

Boeckh's Toronto Factories,
Bryan's London Factories,
Cora's Newmarket Factories



A PICTURE OF COMFORT.

The season of cold, slushy weather is now here, and it behooves every person who values his health to keep his person warmly and comfortably clad. The feet should be the first care. Our **COMFORT HOSIERY** is just the thing for this kind of weather. We have a grand stock of Hosiery to select from.

Then About Underwear

In this department we excel. If you are short in any line, let us hear from you.

MATTHEWS, TOWERS & CO.

Wholesale Men's Furnishings

14 ST. HELEN STREET, - - MONTREAL

WINNIPEG MACHINERY & SUPPLY CO.

J. C. GIBSON, Vice-Pres. and Gen'l Mgr

179 NOTRE DAME AVENUE EAST, WINNIPEG

Wholesale Dealers in

Machinery and "Everything for Power"

GASOLINE ENGINES FOR FARMERS A SPECIALTY

Write us

Canada have a lower schedule of rates for the carriage of their grain than those living in corresponding districts south of the international boundary line, and, at the same time, to express regret that our farmers so frequently fail to get the benefit of these low rates in the sale of their wheat, for reasons quite beyond the control of the railway company.

It is unfortunate that the wording of Mr. MacInnes' letter should have been capable of an interpretation that was not intended. The letter was written after a consultation with me and my decision the question before the movement of another crop at any rate, my conviction being then, as it is now, that our policy should not be forced by special contracts for special considerations between the government and any other railway company. Yours very truly,

T. G. SHAUGHNESSY,
President.

Winnipeg Board of Trade.

A meeting of the council of the board of trade was held Wednesday afternoon. A letter from the Windsor, Ont., board of trade asking for the co-operation of the Winnipeg board in an endeavor to induce the Dominion government to carefully consider the whole matter of establishing closer trade relations with Newfoundland and the British West Indies, was received. The proposal was endorsed by the council, but a further proposition that the Dominion government be urged to arrange a basis for confederation between Canada and Jamaica and Canada and Newfoundland was not concurred in by the council, as it was believed that they had not sufficient data before them to express an intelligent opinion on the merits of the question.

ALEX. CALDER



Successor to A. Hine & Co.

600 Mai St., Winnipeg

Naturalist and Taxidermist

Deer Heads and Bir's Mounted Articles.
Waxen to live—all species of large Deer Head Skins (could be cut to shoulder). White Crane, swans and all rare birds

A letter referred by the board to the council on the subject of making an attempt to secure improved roads leading from outside municipalities into the city was referred to a committee for action.

As Mr. Tarte will evidently not keep his appointment with the council to meet them and discuss the construction of St. Andrew's locks and also to discuss improvements asked in the postoffice building, the council directed the committee having these matters in hand to communicate direct with the new minister of public works.

The freight rates committee reported, submitting correspondence that has passed between them and Sir Thos. Shaughnessy, president of the C.P.R., and also a number of statements from the principal elevator companies of the prices actually paid for grain on the dates and at the places mentioned in Sir Thomas' letter, and these written statements entirely disagree with the figures quoted by Sir Thomas. The whole matter, and incidentally the matter of the shortage in car supply was discussed at length.

When a Cold Water Starch is wanted, it is

CELLULOSE STARCH

that is almost invariably asked for. All merchants handle Cellulose Starch because it gives perfect satisfaction to their customers, and that means that it brings them trade for other things as well.

MADE ONLY BY

The Brantford Starch Works

LIMITED

BRANTFORD, ONT.

and the president was requested to draft a letter in reply to the one from Sir Thomas, embodying the views of the council, expressed at the meeting, this draft to be submitted when prepared, to a meeting to be held for that purpose.

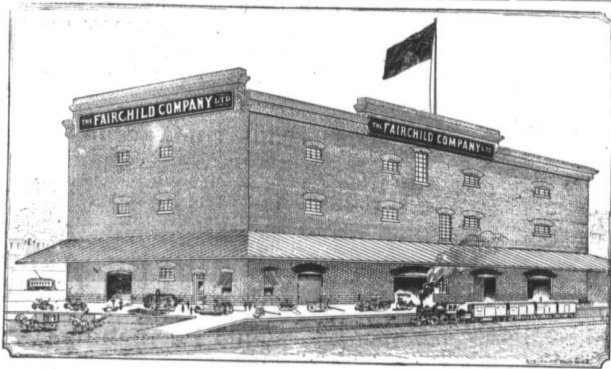
The meeting then adjourned.

Great activity prevails in Australian wine markets in anticipation of a steadily increasing demand for colonial growths. The shipments to England for the first eight months of 1902 were 640,000 gallons, against 483,000 gallons for the corresponding period of 1901.

New Implement Warehouse.
Herdith, we give a view of the new track warehouse of the Fairchild Co., Winnipeg. Some time ago this company acquired a property on the Canadian Pacific Railway track 200 feet in length by 132 in width, upon which they have erected a building 130 feet long, 75 feet wide, four stories high,

trick elevators of large capacity, elevating the goods to the top flats. The basement is 11 feet clear of the joists, ground floor is 13 feet, third floor 12 feet, and fourth floor 9 feet. There is a large canopy around the east side and south end of the building, covering a platform 17 feet in width, for unloading and loading, with four

another building 200 feet in length by 35 feet in width. This gives ample accommodation for the expansion of the business in the future. As the business is growing at a rapid rate, it may not be long before the additional space is required. The new building, which is now occupied, will be used entirely as a track warehouse. The



NEW TRACK WAREHOUSE OF THE FAIRCHILD CO., WINNIPEG.

of solid stone and brick. It is without doubt the largest and finest track warehouse in the west. The dimensions give the company 45,000 feet of floor space under cover, and a total of 475,000 cubic feet storage capacity in which they can store 2000 carloads. The building is well lighted throughout and conveniently arranged; it is equipped with one of the latest elec-

doors for ingress and egress. The company have splendid track facilities, having a private spur running the full length of the property on which they can load five cars at a time. The building is so constructed that in the case of an increased demand additional storeys can be added, and when required, the company can build on the east side of their spur

special feature of the building is the facilities which it affords for rapidly handling goods, not only to and from the cars, but in the building itself, every appliance to facilitate the handling of goods being in use. The downtown offices and show rooms of the company will remain where they have been for some years, on Princess street, opposite the market square.

Railway and Traffic Matters.

Trackage between St. Vincent, Minn., and Emerson, Man., a distance of a quarter mile, will be completed in about ten days. It will connect the Great Northern and Canadian Northern railways. Rails would be laid across the international boundary on Monday.

The Vancouver, Victoria & Eastern Railway & Navigation Company has been granted permission by the railway committee of the Privy Council to construct branch lines to Columbia and Grand Forks, B. C., and to the Granby smelter, near Grand Forks, and to cross the Grand Forks & Kootenai River railway.

Before the railway committee of the privy council the Morden & North-western Railway Company last week applied for approval of the place and mode of crossing by its railway of the Manitoba & Northwestern Railway (C. P. R.) at Neepawa, Man. An order was granted, subject to the installation of an interlocking switch within six weeks from date.

Live Stock Trade Notes.

The failure of Australian fodder crops, owing to drought, has greatly reduced the exportation of frozen meat from that continent to Great Britain. This is expected to result in increased demand for supplies from America.

The statement has been made by the president of the British board of agriculture in the House of Commons that he has no intention of proposing the repeal of the act restricting the importation of cattle. This disposes of the report that Canadian cattle are to be admitted for feeding.

The proposal to run the street cars on Sundays in Winnipeg has met with a hitch. The city council with it understood, before giving permission to run Sunday cars, that the men shall have one day off each week. The men, however, consent, while anxious to run the cars, refuse to give this guarantee. In any event, the question of Sunday cars will be submitted to a vote of the ratepayers before it is authorized by the council.

Canada Furniture Manufacturers Limited

Fancy
Furniture

FOR

Christmas
Presents

WE are now mailing to our customers for distribution, copies of our little Catalogue of articles of furniture suitable for Christmas Presents. The booklet contains sixty-two cuts of various articles likely to attract the Christmas buyer to the Furniture Store. We shall be glad to hear from any one in the Furniture trade who would like some of these Catalogues for distribution. We believe that this is the first booklet descriptive of furniture which has ever been placed in the hands of the trade by a manufacturer in Canada for distribution to the public. A price list with a telegraphic code accompanies each consignment of Catalogues, and by the use of this code customers will be able to order goods by wire. We are doing our best to secure prompt delivery of these goods.

If our customers have not received copies of the new Catalogue of our Woodstock Factories' Case Goods No. 26, we shall be glad to hear from them. We have also recently mailed to the trade a new Catalogue of our American Rattan Factory Reed Chairs. Both these Catalogues should be in the hands of every Furniture Dealer.

WE SELL ONLY TO THE TRADE

Carnefac Stock Food Carnefac Poultry Food Carnefac Worm Powders

For Sale by all the leading
Wholesale Grocers.

Manufactured by

W. G. DOUGLAS, Winnipeg, Man.

W. C. MACDONALD, Actuary. J. K. MACDONALD, Managing Director.

The Confederation Life Association

HEAD OFFICE
TORONTO

There are no conditions as to residence, travel or occupation in the Unconditional Accumulative Policies issued by this Association. They guarantee Extended Insurance, Paid-up Policies and Cash Surrender values.

Manitoba, N. W. T. and B. C.—Winnipeg Office, 467 Main Street.
CHARLES E. KERR, Sec.-Treasurer. DANIEL McDONALD, Manager.
HENRY WORSLEY, City Agent.

Brandon Office - - - - F. W. GILL, Cashier.

P. D. ROE, President & Mgr. R. ABERNETHY, Vice-President. T. F. PATERSON, Sec.-Treas.



Manager.

THE Canadian Pacific Lumber Company

LIMITED

PORT MOODY, B. C.

Manufacturers of and Wholesale
Dealers in All Classes of
British Columbia

**LUMBER, LATH, SHINGLES,
MOULDINGS, Etc.**

Since writing our former "ad" there has been a number of changes around our plant. Our manager is now big enough to wear pants, and everything else has grown in proportion. We have added to our facilities for handling lumber a number of new machines, among them being a planer which will dress a timber 24 in. square.

HENRY BYRNES, Selling Agent, WINNIPEG.

LEADING COMMERCIAL HOTELS

RED DEER, ALTA.

ALBERTA HOTEL.

BEATTY & BRINDLE, Props.

C. and E. dining hall, good sample rooms and every accommodation for commercial travellers and the general public.

EDMONTON

ALBERTA HOTEL.

JACKSON & GRIERSON, Props.

Sample rooms. Free 'bus. Livery in connection.

KAMLOOPS, B. C.

GRAND PACIFIC HOTEL.

P. A. BARNHART, Proprietor.

The best hotel in Kamloops. Ample accommodation.

T & B PLUG AND CUT TOBACCO

Try the new four. They are giving us the satisfaction. Pays the retailer a handsome profit.

THE GEO. E. TUGGERT & SON CO., LTD
HAMILTON.

TEES & PERSSE, Agents, Winnipeg.

A. CARRUTHERS & CO.

Dealers and Exporters of

**Hides, Wool, Sheepskins,
Tallow, Seneca Root
and Raw Furs**

Liberal advances made on shipments against Bill Lading. Wool sacks, Hides and Taps furnished on application.

Office and Warehouse:
120-122 King St., Winnipeg, Man.

ROYAL YEAST CAKES

MOST PERFECT MADE.



E. W. GILLETT COMPANY LIMITED
TORONTO, ONT.

LEITCH BROS.

Oak Lake

"Anchor Brand" Flours

FROM NO. 1 HARD WHEAT.

Bran, Shorts and all kinds of
Chopped Feed and Grain.

ADDRESS

OAK LAKE, MAN.

The Best Made Overall in the West

Mall orders promptly attended to.

THE WINNIPEG SHIRT AND OVERALL MFG. CO.

Corner Main and James Streets.
WINNIPEG.

SADLER & HAWORTH

Tanners and Manufacturers of

Oak Leather Belting

Montreal and Toronto.

J CLEARHUE Commission Merchant

FRUITS AND ALL KINDS OF PRODUCE

Special attention given to consignments of BUTTER and EGGS.
Consignments received in all lines. Correspondence solicited.

VICTORIA, B. C.

P. O. Box 538.

WM. FERGUSON

WHOLESALE

**Wines, Liquors
and Cigars**

814 STREET, BRANDON

Tenders Awarded.

At the meeting of the Winnipeg city council this week the following tenders were recommended:
Archibald Wright, for supply of cloth caps for fire department; \$11.40 per dozen.

Winnipeg Rubber Co., for supply of rubber boots at \$2.06 per pair; for supply of rubber coats at \$4.25 each, the coats to be supplied with pockets and automatic fasteners, and to be stitched around arms.

The Gutta Percha & Rubber Mfg. Co., for supply of 1,000 feet of 2 1/2 inch Paragon hose, at 90c per foot, with couplings complete.

Hudson's Bay Co., for supply of mitts at \$4.50 per dozen pair; sample "Alaska" brand.

The tender for hose was referred back to the committee, as it was claimed that the lowest tender had not been accepted.

Leading the Leaders.

There never was a time when competition in manufactured goods was as keen as at the present. The firm that would secure and retain a strong hold on Canadian trade must not only put skill and money into the manufacture of their goods, but they must put conscience and business integrity into them as well. When they do this they quickly become leaders. In no case have these conditions been more fully incorporated into business than in the case of the United Factories, whose Brushes, Brooms and Woodware stand right in the foremost of the race for recognition on merit by the dealers in high class Canadian manufactured goods.

Crop Estimates.

The Grain Dealers' Association estimates that Manitoba will produce 50,243,000 bushels of wheat, or 24.63 bushels per acre; 85,615,000 bushels of oats, or 16,600 bushels per acre; 12,057,000 bushels of barley, or 35.54 bushels per acre; and 567,436 bushels of flax seed, or 13.59 bushels per acre.

The crop of the Territories, which for commercial purposes goes in with that of Manitoba, is estimated by the same association as follows: Wheat, 14,020,000 bushels, or 24 bushels per acre; oats, 12,280,000 bushels, or 47.1 bushels per acre; barley, 1,000,000 bushels, or 35.20 bushels per acre; flaxseed, 91,257 bushels, or 11.35 bushels per acre.

The grand total for the two divisions, according to this estimate, is as follows:

Wheat—64,263,000 bushels.
Oats—49,514,000 bushels.
Barley—13,108,000 bushels.
Flaxseed—618,000 bushels.

BROWN'S LAND OFFICE AND BUSINESS EXCHANGE.

STRANG BLOCK, 46 MAIN STREET, WINNIPEG, MANITOBA. Telephone 1281.

You can secure partners buy, sell or exchange land, stocks and every kind of business through us.

We advertise largely in the east and west and sales are quickly made when wants are all kind of one place.

We advertise free and do not mention names or prices.

All business matters strictly private. Commission 5 per cent, paid by the seller.

Give full particulars first letter to save time.

FOR SALE.

Men's Furnishing and Clothing Business in town of 150 population, in one of the best districts in Southern Manitoba; good stand, clean stock, well established; ill-health is cause of sale. Address Sale, care Commercial.

FOR SALE.

The Austin Flour Mill and Elevator; capacity of mill 150 barrels per day; of elevator, 40,000 bushels. This is one of the most complete plants in the province, built on the banks of an ever-running stream, with private siding, track scales and large four warehouse. Apply to W. CLIFFORD, Austin, Man.

SAFE FOR SALE.

Size about 15 by 30 inches, 16 inches deep, good as now. Apply at office of The Commercial, where safe can be seen.

PARTNER WANTED.

WANTED-A PARTNER HAVING not less than \$5,000.00, to take a half share in a flour mill and grain elevator in the Northwest Territories. One who could keep the books and attend to the financial part preferred. Address F. R. Office of Commercial.

FOR RENT.

A flat warehouse at Mainbank station, on Canadian Northern railway. Holds about five thousand bushels of grain. Has a large scale in the large amount of grain is shipped from this station. Should be a good chance for a grain buyer. Apply to K. Reimer & Son, Steinbach P. O., Man.

WANTED.

To purchase stock of general merchandise in thriving town in Manitoba or in N. W. T. Cash offer. Address J. F., care of The Commercial.

FINE FARM PROPERTY FOR SALE.

FOR SALE-One of, if not the finest improved farms in the district of Grenfell, Assiniboia, N. W. T., comprising some two sections of choice land, well wooded and watered, some 30 acres under cultivation; good house, granary, and stables, 30 acres fenced for paddock. For particulars apply to O. P. Skirne, Vancouver, B. C. No agents.

FOR SALE.

A good butcher business. Good shop, with living rooms upstairs; good stable, slaughter house, no house and pig pen. Apply A. D. Marshall, Roland, Man.

GOOD OPENING.

Hardware Stock for sale, in one of the best towns in Manitoba. Address Hardware, care The Commercial.



OVERALLS - Send in your fall sorting orders. We have a large stock now on hand.

SHIRTS - Prompt delivery guaranteed.

PANTS - THE HOOPER MANUFACTURING CO. LTD. WINNIPEG.

GROCERIES.

Prices to retail dealers for ordinary lots, with usual discounts for cash or large lots.

Table listing various grocery items such as Apples, Peaches, Raisins, and other produce with their respective prices per case or per bushel.

Table listing various grocery items such as Corn beef, Lard, and other meats with their respective prices per case or per bushel.

Table listing various grocery items such as Potatoes, Onions, and other vegetables with their respective prices per bushel or per ton.

Table listing various grocery items such as Rice, Beans, and other grains with their respective prices per bushel or per ton.

Table listing various grocery items such as Cigarettes, Tea, and other beverages with their respective prices per pack or per tin.

Table listing various grocery items such as Currants, Raisins, and other dried fruits with their respective prices per barrel or per bushel.

Table listing various grocery items such as Dates, Peas, and other legumes with their respective prices per bushel or per ton.

Table listing various grocery items such as Apples, Peaches, and other fruits with their respective prices per bushel or per ton.

Table listing various grocery items such as Apples, Peaches, and other fruits with their respective prices per bushel or per ton.

WINNIPEG PRICES CURRENT

Table listing various grocery items such as Pitted plums, Prunes, and other fruits with their respective prices per bushel or per ton.

Table listing various grocery items such as Nuts, Brazil, and other nuts with their respective prices per bushel or per ton.

Table listing various grocery items such as Extra bright, Medium, and other oils with their respective prices per bushel or per ton.

Table listing various grocery items such as Common, fine, and other flours with their respective prices per bushel or per ton.

Table listing various grocery items such as Assorted herbs, Allspice, and other spices with their respective prices per bushel or per ton.

Table listing various grocery items such as Allspice, white, and other spices with their respective prices per bushel or per ton.

Table listing various grocery items such as China Blacks, Choice, and other teas with their respective prices per bushel or per ton.

Table listing various grocery items such as T. and B. 2c and 3c, and other teas with their respective prices per bushel or per ton.

Table listing various grocery items such as Currants, Raisins, and other dried fruits with their respective prices per barrel or per bushel.

Table listing various grocery items such as Dates, Peas, and other legumes with their respective prices per bushel or per ton.

Table listing various grocery items such as Apples, Peaches, and other fruits with their respective prices per bushel or per ton.

Table listing various grocery items such as Apples, Peaches, and other fruits with their respective prices per bushel or per ton.

Table listing various grocery items such as Pommer, Currant, and other fruits with their respective prices per bushel or per ton.

Table listing various grocery items such as Virgin Gold, Bulla Eye, and other goods with their respective prices per bushel or per ton.

Table listing various grocery items such as Pails, Tubs, and other household goods with their respective prices per bushel or per ton.

Table listing various grocery items such as Pails, Tubs, and other household goods with their respective prices per bushel or per ton.

Table listing various grocery items such as Brooms, Walter Woods, and other household goods with their respective prices per bushel or per ton.

Table listing various grocery items such as Mrs. Stewart's liquid, and other household goods with their respective prices per bushel or per ton.

Table listing various grocery items such as DRUGS, Following are prices for barrel lots, with usual reductions for unbroken packages.

Table listing various grocery items such as Alum, Bleaching powder, and other household goods with their respective prices per bushel or per ton.

Table listing various grocery items such as Borax, Bromide poison, and other household goods with their respective prices per bushel or per ton.

Table listing various grocery items such as Camphor, Castor oil, and other household goods with their respective prices per bushel or per ton.

Table listing various grocery items such as Chilean potash, Copper, and other household goods with their respective prices per bushel or per ton.

Table listing various grocery items such as Extract logwood, Ferriolin, and other household goods with their respective prices per bushel or per ton.

Table listing various grocery items such as Leather, Harness, and other household goods with their respective prices per bushel or per ton.

CANADIAN PACIFIC

CHOICE OF SEVERAL ROUTES TO ...

ALL POINTS EAST

LAKE STEAMERS

Leave Fort William every Tuesday, Friday and Sunday, Connecting Trains from Winnipeg, Monday, Thursday and Saturday.

Through Sleeping Cars

TORONTO, MONTREAL, BOSTON, VANCOUVER, SEATTLE AND THE KOOTENAY

For full information apply at City Office, opposite Post Office, or at Depot.

G. E. McPHERSON
General Passenger Agent.

R. B. HUTCHISON & CO.
80 Bay Street
TORONTO.

Jobbers in Woollens
Canadian and Imported.

Samples furnished on application.
N. N. COLE - 388 Hargrave Street.
WINNIPEG
Manitoba Representative. Tel. 57.

One of the most flourishing Icelandic colonies in Manitoba, is away up on the shores of Lake Winnipeg. The new beet sugar factory at Berlin, Ont., is now in operation. The plant cost \$900,000 and has a capacity of 900 tons of beets per day. Its output of sugar will be 425 barrels per day. The proprietors are The Ontario Sugar Company, Limited.



Office: 391 Main Street.

THROUGH TICKETS TO ALL POINTS EAST, WEST AND SOUTH
California and Florida Winter Resorts Also to European Points, Australia, China and Japan.
Pullman Sleepers.
All Equipment First Class.

For further information apply to H. SWINFORD, General Agent, 391 Main Street, Winnipeg; or CHAS. B. FRETZ, General Passenger and Ticket Agent, St. Paul, Minn.

ATLANTIC STEAMSHIP LINES.

Allan Line-Montreal.	
Preletian	Nov. 15
Theater Line-Montreal.	
Lake Ontario	Nov. 20
Allan Line-Halifax.	
Parisian	Nov. 22
Beaver Line-St. John's.	
Lake Erie	Dec. 3
Dominion Line-Portland.	
Colonial	Nov. 15
Californian	Nov. 29
Dominion Line-Boston.	
Merion	Nov. 12
White Star Line-New York.	
Toutonic	Nov. 12
Cymric	Nov. 18
Cunard Line-New York	
Campania	Nov. 8
Umbria	Nov. 15
Uthonia	Nov. 8
Ivernia	Nov. 22
American Line-New York.	
St. Louis	Nov. 12
Philadelphia	Nov. 19
Red Star Line-New York.	
Kamington	Nov. 8
Friesland	Nov. 15
Anchor Line-New York.	
Columbia	Nov. 15
Astoria	Nov. 29
Allan State Line-New York.	
Mongolian	Nov. 13
Sardinian	Nov. 27
RATES-Cabin, \$6, \$5, \$6, \$7, \$8 and upwards. Second Cabin, \$5, \$7.50, \$9 and upwards. Steerage, \$2.50, \$3.50, \$5.	
Passengers ticketed through to all points in Great Britain and Ireland and at specially low rates to all ports of European continent. Prepaid passage arranged from all points. Apply to the nearest steamship or railway ticket agent or to W. P. Cummings, General Agent, Winnipeg, Man.	

Whats the use of Arguing the Matter?
Our Curling Brooms are the Best, and better than ever.
We want every dealer to try a sample shipment and be convinced, or return them at our expense.

WALTER WOODS & CO.
WHOLESALE
Wooden and Willow Ware, Brooms, Brushes, and Grocers' Sundries.
HAMILTON AND WINNIPEG

PLEASE NOTIFY.
Subscribers to The Commercial are requested to notify the office of any irregularity in the receipt of their paper.

"What has he done, policeman?"
"He won't be on when I told him, so I arrested him."
"But the poor fellow has lost his head."
"Well, mum, he'll get it before the magistrate, so you don't need to worry."—The Moon.



The Famous "T L" Cigar

The standard of what a good Cigar should be: Aromatic, Pure, Mild, Sweet.

Good dealers everywhere sell this good Cigar.

"A DREAM OF HAVANA."

Western Cigar Factory, Winnipeg
THOS. LEE, Proprietor.

PING PONG TABLE TENNIS

720 Sets of this Jolly Game received lately. We have them in Vellum and Wood Racquet. Fifteen styles. Can be sold retail from 25c to \$10.00.

Ping Pong Bats, Ping Pong Balls and Ball Pick-ups. Ping Pong Invitation Cards and Ping Pong Score Cards.

Games of all sorts. Dolls, Toys and Fancy Goods.

THE CONSOLIDATED STATIONERY CO. Limited
WINNIPEG
244 McDermot Ave.

OYSTERS?

We have the best line of OYSTERS in the market. Orders by Mail or Wire filled immediately.

Try a sample box of our HADDIES.

W. J. GUEST Wholesale Fish, Game, Poultry, Etc.
800 Main St., Winnipeg.

CITY BOX FACTORY

Czerwinski & Grant
Manufacturers of all kinds of boxes, crates, butter and egg cases and liners. Look order and printed boxes.
93 and 95 LOMBARD STREET WINNIPEG.

We are now making up our Curling Brooms and have something new in a **ROUND CURLER** Just the thing for curling. Write for quotations.

E. H. BRIGGS & CO.
Broom Manufacturers.
Telephone 1554. WINNIPEG, MAN.

INK**INK****INK**

If we have not yet received your Fall order for Ink we would be much pleased to do so as soon as possible. We have a full stock of

**STEPHENS' INKS
UNDERWOOD'S INKS
PAUL'S INKS**

on hand and can fill all orders promptly.

We would call your attention to **Paul's Ink**. This is the cheapest Ink on the market and is giving the best satisfaction.

CLARK BROS. & CO., Wholesale Stationers
Box 1240 **WINNIPEG, MAN.**

The W. H. Malkin Co.
LIMITED.

**Importers and
Wholesale Grocers**

Packers of the Celebrated
**VICTORIA CROSS Evaporated
Fruits, Teas and Coffees.**

**HEADQUARTERS for Sage, Tapioca,
Rice and all classes of English
Groceries.**

Prompt attention to all letter orders.

137 Water St., - VANCOUVER, B.C.

RAT PORTAGE LUMBER COMPANY

LIMITED

MANUFACTURERS OF ..

**LUMBER,
LATH, SHINGLES,
SASH,
DOORS**

AND ALL KINDS
OF WOODWORK

Head Office and Mills at RAT PORTAGE, ONT.

Branch: Point Douglas Avenue, WINNIPEG

**Lalonde,
Milord & Co.**

WINNIPEG, MAN.

Manufacturers of

**SASH, DOORS,
SHOW CASES,
STORE AND BAR
FITTINGS, Etc.**

Office and Mills corner of King and
Sutherland.

ASK FOR

...Ogilvie Oats...

DELICIOUS FLAVOR FREE FROM HULLS WARRANTED PURE

Put Up in All Sized Packages

Ogilvie's Hungarian

AS NOW MANUFACTURED. THE GREAT FAMILY FLOUR

Insist on getting "OGILVIE'S" as they are better than the BEST

HAVE NO EQUAL

DREWRY'S

"REFINED ALE"

"Which sparkles like Champagne," is the standard by which others are judged. Always the same; purity guaranteed. Flavor most pleasant. As a table ale it cannot be excelled. Bottled in half-pints for family use.

E. L. DREWRY

Manufacturer and Importer.
Winnipeg.

Wholesale

We supply all out of town merchants with a full line of

Jewellery

at wholesale prices. Write for particulars.

D. R. DINGWALL Ltd.

424 and 584 Main St., Winnipeg.

Sign of the Street Clock.

Grain Tickets

AND OTHER STATIONERY.

SEND FOR SAMPLES

THE FRANKLIN PRESS Ltd. Opp. Grain Exchange, Winnipeg

**The Great West
Saddlery Company Ltd.**

Make the best and most perfect fitting

**HORSE COLLARS
AND HARNESS**

In Canada. Our saddles and strap work are gems of perfection of the leather workers' art. Branches and agencies everywhere. Ask for our Horse-Shoe Brand Collars and take no other make if you want the best, or send direct to

519 Main St. Winnipeg