

IMAGE  
TEST TA

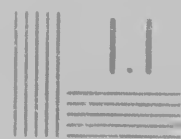
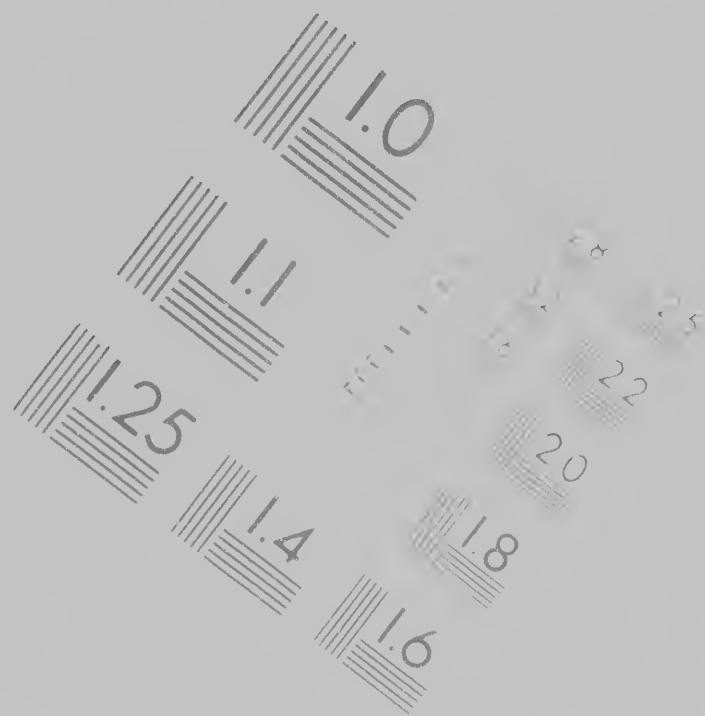


IMAGE EVALUATION  
TEST TARGET (MT-3)



1.0



1.1

2.8

3.2

2.0

1.8

**CIHM/ICMH  
Microfiche  
Series.**

**CIHM/ICMH  
Collection de  
microfiches.**

ICMH  
ion de  
ches.

## Technical and Bibliographic

The Institute has attempted to obtain the best original copy available for filming. Features of a copy which may be bibliographically unique, which may alter any of the images in the reproduction, or which may significantly change the usual method of filming, are checked below.

- Coloured covers/  
 Couverture de couleur
- Covers damaged/  
 Couverture endommagée
- Covers restored and/or laminated/  
 Couverture restaurée et/ou pelliculée
- Cover title missing/  
 Le titre de couverture manque
- Coloured maps/  
 Cartes géographiques en couleur
- Coloured ink (i.e. other than blue or black)  
 Encre de couleur (i.e. autre que bleue ou noire)
- Coloured plates and/or illustrations/  
 Planches et/ou illustrations en couleur
- Bound with other material/  
 Relié avec autre matériel

Technical and Bibliographic Notes/Notes techniques et bibliographiques

To obtain the best  
filming Features of this  
uniquely unique  
images in the  
significantly change  
are checked below

L'Institut a microfilmé le meilleur exemplaire  
qu'il lui a été possible de se procurer. Les détails  
de cet exemplaire qui sont peut être uniques du  
point de vue bibliographique, qui peuvent modifier  
une image reproduite, ou qui peuvent exiger une  
modification dans la méthode normale de filmage  
sont indiqués ci-dessous

ee

laminated/  
ou pelliculée

manque

n couleur

(than blue or black);  
autre que bleu ou noir)

illustrations/  
ons en couleur

ial/

Coloured pages/  
Pages de couleur

Pages damaged/  
Pages endommagées

Pages restored and/or laminated  
Pages restaurées et/ou pelliculées

Pages discoloured, stained or foxed  
Pages décolorées, tachetées ou piquées

Pages detached  
Pages détachées

Showthrough  
Transparence

Quality of print varies/  
Qualité inégale de l'impression

Includes supplementary material

The  
to t

The  
pos  
of t  
film

Ori  
beg  
the  
sio  
otr  
firs  
sio  
or i

Ma  
diff  
ent

The copy filmed here has been reproduced thanks to the generosity of

Library of Congress  
Photoduplication Service

The images appearing here are the best quality possible considering the condition and legibility of the original copy and in keeping with the filming contract specifications.

Original copies in printed paper covers are filmed beginning with the front cover and ending on the last page with a printed or illustrated impression, or the back cover when appropriate. All other original copies are filmed beginning on the first page with a printed or illustrated impression, and ending on the last page with a printed or illustrated impression.

Maps, plates, charts, etc., may be filmed at different reduction ratios. Those too large to be entirely included in one exposure are filmed

L'exemplaire filmé fut reproduit grâce à la générosité de

Library of Congress  
Photoduplication Service

Les images suivantes ont été filmées avec le plus grand soin, compte tenu de la netteté de l'exemplaire et de la conformité avec les conditions du contrat de filmage.

Les exemplaires originaux dont le support est imprimé sont filmés à partir du premier plat et en terminant sur la dernière page qui comporte une impression ou une illustration, ou le dernier plat, selon le cas. Tous les autres exemplaires originaux sont filmés en commençant par la première page qui comporte une impression ou une illustration et en terminant sur la dernière page qui comporte une impression ou une illustration.

Les cartes, planches, tableaux, etc., peuvent être filmés à des taux de réduction différents. Lorsque le document est trop grand pour être entièrement inclus dans une seule exposition, il est filmé

e filmé fut reproduit grâce à la  
de

Library of Congress  
Photoduplication Service

suivantes ont été reproduites avec le  
soin, compte tenu de la condition et  
é de l'exemplaire filmé, et en  
avec les conditions du contrat de

aires originaux dont la couverture en  
mprimée sont filmés en commençant  
ier plat et en terminant soit par la  
ge qui comporte une empreinte  
n ou d'illustration, soit par le second  
le cas. Tous les autres exemplaires  
ont filmés en commençant par la  
age qui comporte une empreinte  
n ou d'illustration et en terminant par  
page qui comporte une telle

planches, tableaux, etc., peuvent être  
s taux de réduction différents  
document est trop grand pour être







STATES of America,  
assembled.

# DECLARATION,

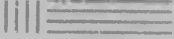
as by Land, agreed upon between the United  
Majesties and enjoining the Observance thereof.

On the Thirtieth Day of November last, between the Ministers Plenipotentiary of the United  
Plenipotentiary of His Britannic Majesty, to be inserted in and to constitute the Treaty of  
of America and His Britannic Majesty, when Terms of Peace should be agreed upon be-  
umina, for restoring Peace between their Most Christian and Britannic Majesties, were  
of their Most Christian and Britannic Majesties: And whereas Preliminaries, for re-  
also signed at A on the same Twentieth Day of January last.

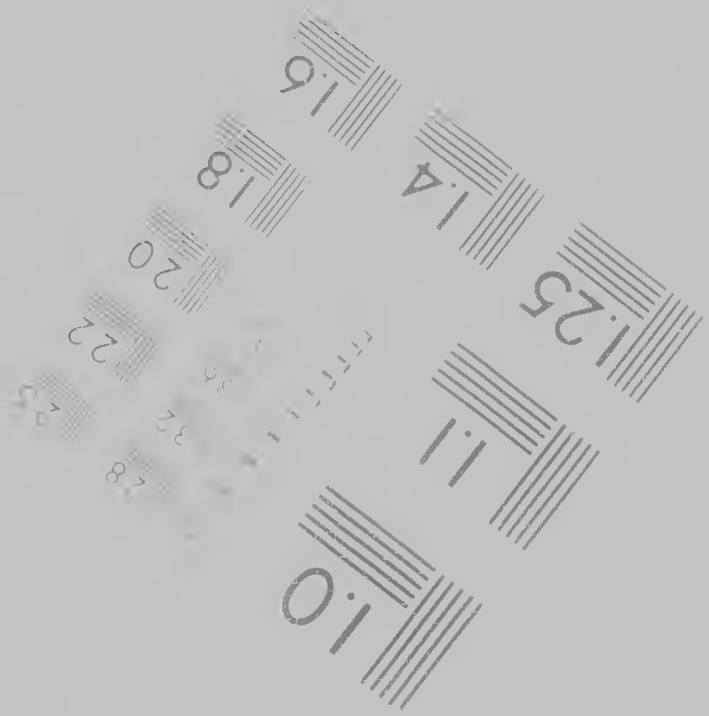
as the same were ratified, Hostilities between the said Kings, their Kingdoms, States and  
ect, That all Vessels and Effects that might be taken in the Channel and in the North Seas,  
ary Angles, should be restored; that the Term should be One Month from the Channel  
ean of the Mediterranean; Two Months from the said Canary Islands as far as the Equino-  
World, without any Exception, or more particular Description of Time or Place: And  
of Great Britain, in the Name and by the express Order of the King his Master, on the said

their Subjects and their Possessions, shall be comprised in the above mentioned Suspension of  
was above mentioned, their Subjects and Possessions respectively: upon Condition that, on

And whereas the Ministers Plenipotentiary of the United States did, on the same



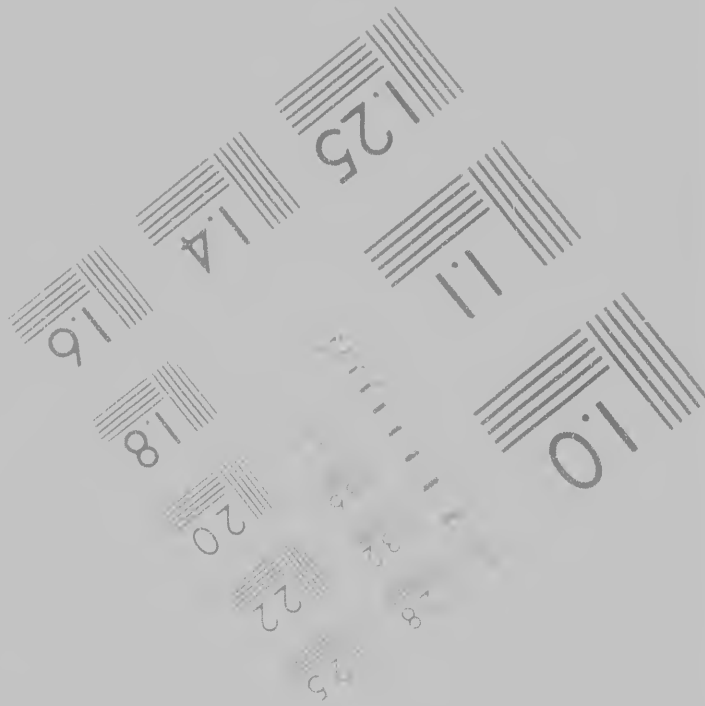
1.25



Photographic  
Sciences  
Corporation



6"



Photographic  
Sciences  
Corporation

23 WEST MAIN STREET  
WEBSTER N Y 14580  
716 872-4503

Canada





Canadian Institute for Historical Microreproductions / Institut canadien de microreproductions

© 1988

reproductions historiques

36

- Bound with other material/  
Relie avec d'autres documents
- Tight binding may cause shadows or distortion  
along interior margin/  
La reliure serrée peut causer de l'ombre ou  
distorsion le long de la marge intérieure
- Blank leaves added during restoration may  
appear within the text. Whenever possible  
have been omitted from filming/  
Il se peut que certaines pages blanches ajoutées  
lors d'une restauration apparaissent dans le  
texte, mais lorsque cela était possible, ces pages  
n'ont pas été filmées
- Additional comments CHM no.
- Commentaires supplémentaires

This item is filmed at the reduction ratio checked  
Ce document est filmé au taux de réduction indiqué

10X	14X	18X
	12X	16X



al/  
ments

shadows or distortion

user de l'ombre ou de la  
charge intérieure

ng restoration may  
Whenever possible these  
filming/

pages blanches ajoutées  
apparaissent dans le texte  
possible, ces pages n'ont

Includes supplementary material.  
Comprend du matériel supplémentaire

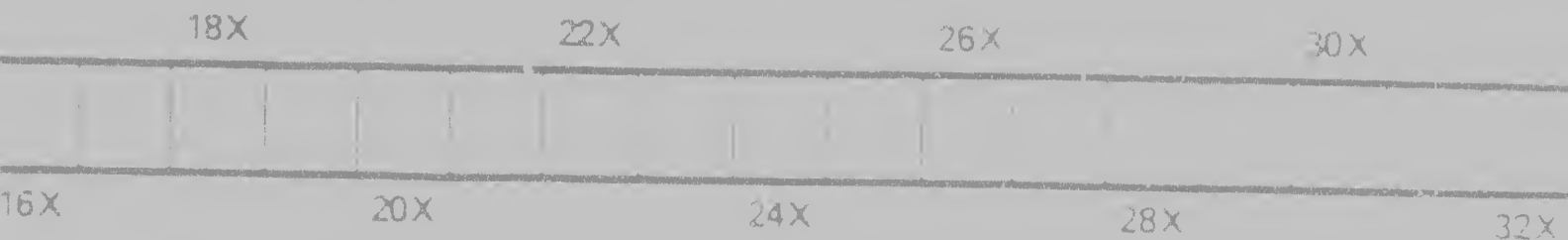
Only edition available/  
Seule édition disponible

Pages wholly or partially obscured by errata  
slips, tissues, etc. have been refilmed to  
ensure the best possible image.  
Les pages totalement ou partiellement  
obscurcies par un feuillet d'errata, une pelure  
etc. ont été filmées à nouveau de façon à  
obtenir la meilleure image possible

CHM no. 60365

ntaires

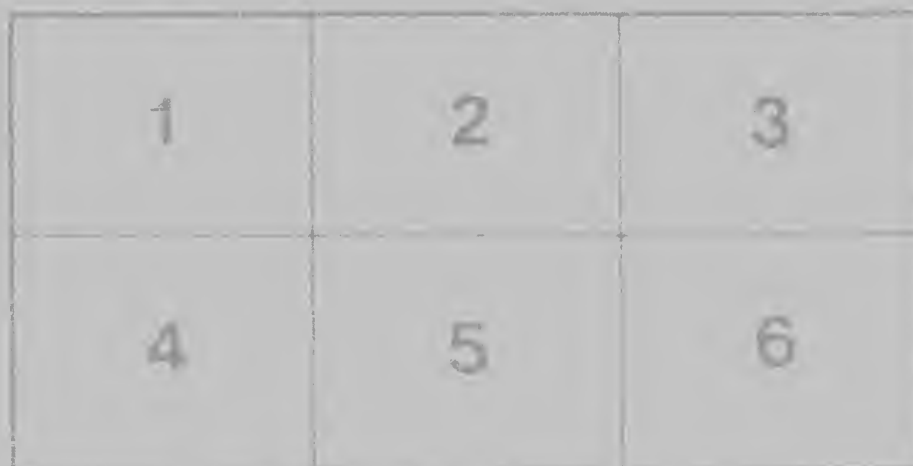
ction ratio checked below  
x de réduction indique ci-dessous



diff  
ent  
beg  
righ  
req  
me

different reduction ratios. Those too large to be entirely included in one exposure are filmed beginning in the upper left hand corner, left to right and top to bottom, as many frames as required. The following diagrams illustrate the method

filmés à des taux de réduction. Lorsque le document est trop reproduit en un seul cliché, il est filmé de l'angle supérieur gauche, de haut en bas, en prenant le nombre d'images nécessaire. Les diagrammes illustrent la méthode



5 taux de réduction différents  
document est trop grand pour être  
en un seul cliché, il est filmé à partir  
supérieur gauche, de gauche à droite  
en bas, en prenant le nombre  
nécessaire. Les diagrammes suivants  
méthode





the Part and in the Name of the United States of America, a similar Declaration shall be delivered  
and containing an Assurance of the most perfect Reciprocity on their Part: And whereas the  
Twentieth Day of January, in the Name and by the Authority of the said United States, accept  
all Hostilities to cease against His Britannic Majesty, his Subjects and his Possessions, or the Territories  
Great-Britain, His Majesty the King of France, and His Majesty the King of Spain, so as  
Three Crowns, and to produce the same Effects: And whereas the Declarations of the said Pro  
cesses were exchanged by their Ministers on the Third Day of February last, and between His  
bruary last: And whereas it is Our Will and Pleasure, that the Cessation of Hostilities  
should be conformable to the Epochs fixed between their Most Christian and Britannic

We have thought fit to make known the same to the Citizens of these States, and We have  
Land, and other Subjects of these United States, to observe all Acts of Hostility, either by  
and after the respective Times agreed upon between their Most Christian and Britannic

And We do further declare, that the said Declaration shall be made public, to the End  
of the said Declaration, and that the same may be seen by all the Citizens of these States

**D O N E** in Congress, at Philadelphia, the 25th Day of  
Seven Hundred and Eighty-eight, and of the Independence of these United States the 4th

Attest. **CHARLES THOMSON**, Secretary

State of **R H O D E I S L A N D**

THE preceding is a true Copy of the Original, which is now deposited in the  
Office by Order of His Excellency the Governor

1788

