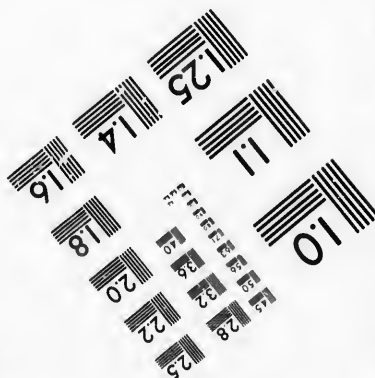
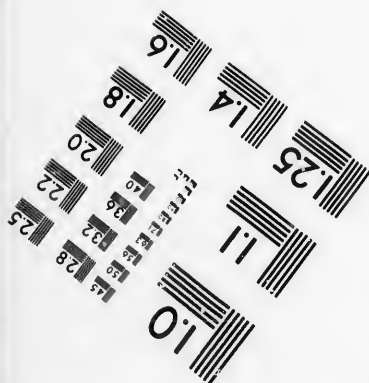
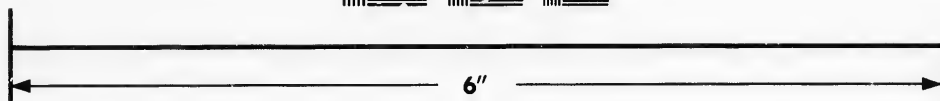
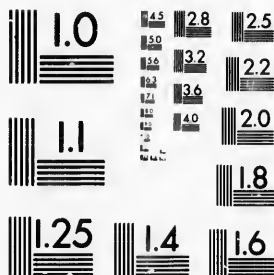


**IMAGE EVALUATION
TEST TARGET (MT-3)**



**Photographic
Sciences
Corporation**

23 WEST MAIN STREET
WEBSTER, N.Y. 14530
(716) 872-4503

**CIHM/ICMH
Microfiche
Series.**

**CIHM/ICMH
Collection de
microfiches.**



Canadian Institute for Historical Microreproductions / Institut canadien de microreproductions historiques

© 1987

Technical and Bibliographic Notes/Notes techniques et bibliographiques

The Institute has attempted to obtain the best original copy available for filming. Features of this copy which may be bibliographically unique, which may alter any of the images in the reproduction, or which may significantly change the usual method of filming, are checked below.

L'Institut a microfilmé le meilleur exemplaire qu'il lui a été possible de se procurer. Les détails de cet exemplaire qui sont peut-être uniques du point de vue bibliographique, qui peuvent modifier une image reproduite, ou qui peuvent exiger une modification dans la méthode normale de filmage sont indiqués ci-dessous.

- Coloured covers/
Couverture de couleur
- Covers damaged/
Couverture endommagée
- Covers restored and/or laminated/
Couverture restaurée et/ou pelliculée
- Cover title missing/
Le titre de couverture manque
- Coloured maps/
Cartes géographiques en couleur
- Coloured ink (i.e. other than blue or black)/
Encre de couleur (i.e. autre que bleue ou noire)
- Coloured plates and/or illustrations/
Planches et/ou illustrations en couleur
- Bound with other material/
Relié avec d'autres documents
- Tight binding may cause shadows or distortion
along interior margin/
La reliure serrée peut causer de l'ombre ou de la
distorsion le long de la marge intérieure
- Blank leaves added during restoration may
appear within the text. Whenever possible, these
have been omitted from filming/
Il se peut que certaines pages blanches ajoutées
lors d'une restauration apparaissent dans le texte,
mais, lorsque cela était possible, ces pages n'ont
pas été filmées.
- Additional comments:/
Commentaires supplémentaires:

- Coloured pages/
Pages de couleur
- Pages damaged/
Pages endommagées
- Pages restored and/or laminated/
Pages restaurées et/ou pelliculées
- Pages discoloured, stained or foxed/
Pages décolorées, tachetées ou piquées
- Pages detached/
Pages détachées
- Showthrough/
Transparence
- Quality of print varies/
Qualité inégale de l'impression
- Includes supplementary material/
Comprend du matériel supplémentaire
- Only edition available/
Seule édition disponible
- Pages wholly or partially obscured by errata
slips, tissues, etc., have been refilmed to
ensure the best possible image/
Les pages totalement ou partiellement
obscurcies par un feuillet d'errata, une pelure,
etc., ont été filmées à nouveau de façon à
obtenir la meilleure image possible.

This item is filmed at the reduction ratio checked below/
Ce document est filmé au taux de réduction indiqué ci-dessous.

10X	14X	18X	22X	26X	30X
<input type="checkbox"/>	<input type="checkbox"/>	<input type="checkbox"/>	<input type="checkbox"/>	<input checked="" type="checkbox"/>	<input type="checkbox"/>
12X	16X	20X	24X	28X	32X

The copy filmed here has been reproduced thanks to the generosity of:

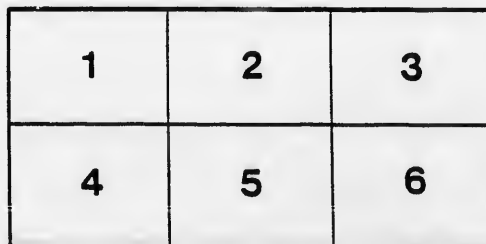
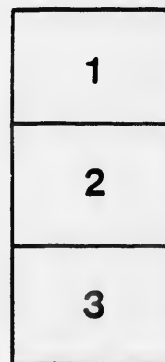
Archives of Ontario
Toronto

The images appearing here are the best quality possible considering the condition and legibility of the original copy and in keeping with the filming contract specifications.

Original copies in printed paper covers are filmed beginning with the front cover and ending on the last page with a printed or illustrated impression, or the back cover when appropriate. All other original copies are filmed beginning on the first page with a printed or illustrated impression, and ending on the last page with a printed or illustrated impression.

The last recorded frame on each microfiche shall contain the symbol \longrightarrow (meaning "CONTINUED"), or the symbol ∇ (meaning "END"), whichever applies.

Maps, plates, charts, etc., may be filmed at different reduction ratios. Those too large to be entirely included in one exposure are filmed beginning in the upper left hand corner, left to right and top to bottom, as many frames as required. The following diagrams illustrate the method:



L'exemplaire filmé fut reproduit grâce à la générosité de:

Archives of Ontario
Toronto

Les images suivantes ont été reproduites avec le plus grand soin, compte tenu de la condition et de la netteté de l'exemplaire filmé, et en conformité avec les conditions du contrat de filmage.

Les exemplaires originaux dont la couverture en papier est imprimée sont filmés en commençant par le premier plat et en terminant soit par la dernière page qui comporte une empreinte d'impression ou d'illustration, soit par le second plat, selon le cas. Tous les autres exemplaires originaux sont filmés en commençant par la première page qui comporte une empreinte d'impression ou d'illustration et en terminant par la dernière page qui comporte une telle empreinte.

Un des symboles suivants apparaîtra sur la dernière image de chaque microfiche, selon le cas: le symbole \longrightarrow signifie "A SUIVRE", le symbole ∇ signifie "FIN".

Les cartes, planches, tableaux, etc., peuvent être filmés à des taux de réduction différents. Lorsque le document est trop grand pour être reproduit en un seul cliché, il est filmé à partir de l'angle supérieur gauche, de gauche à droite, et de haut en bas, en prenant le nombre d'images nécessaire. Les diagrammes suivants illustrent la méthode.



VOTERS' LIST.

1890.

TOWNSHIP OF WEST WAWANOSH.

CLERK'S CERTIFICATE.

I, R. K. MILLER, clerk of the municipality of the township of West Wawanosh, in the county of Huron, do hereby certify that parts 1 and 3 of the within list, constitute a correct list for the year 1890, of all persons appearing by the last revised assessment roll of the said municipality, to be entitled to vote at elections of members of the Legislative Assembly, and that parts 1 and 2 constitute a correct list for the said year of all persons appearing by the said roll, to be entitled to vote at municipal elections in the said municipality, and I hereby call upon the electors to examine the said list, and if any omissions or other errors are perceived therein, to take immediate proceedings and have the said errors corrected according to law.

Dated this day of 1890.

R. K. MILLER,
Township Clerk.

JUDGE'S CERTIFICATE.

R. K. MILLER, clerk of the municipality of the township of West Wawanosh, having certified under his hand, that no complaint respecting the list of Voters for said municipality, for the year 1890, had been received by him within thirty days after the first posting up of the same; and on application of the said clerk, I, ISAAC FRANCIS TOMS, ESQ., Judge of the county court of Huron, in pursuance of the provisions of the "Voters' List Act," certify that the within-printed list of voters, being one of the copies revised by me from the said clerk, under Section 2 of the said Act, is the revised list of voters for the said municipality for the year 1890.

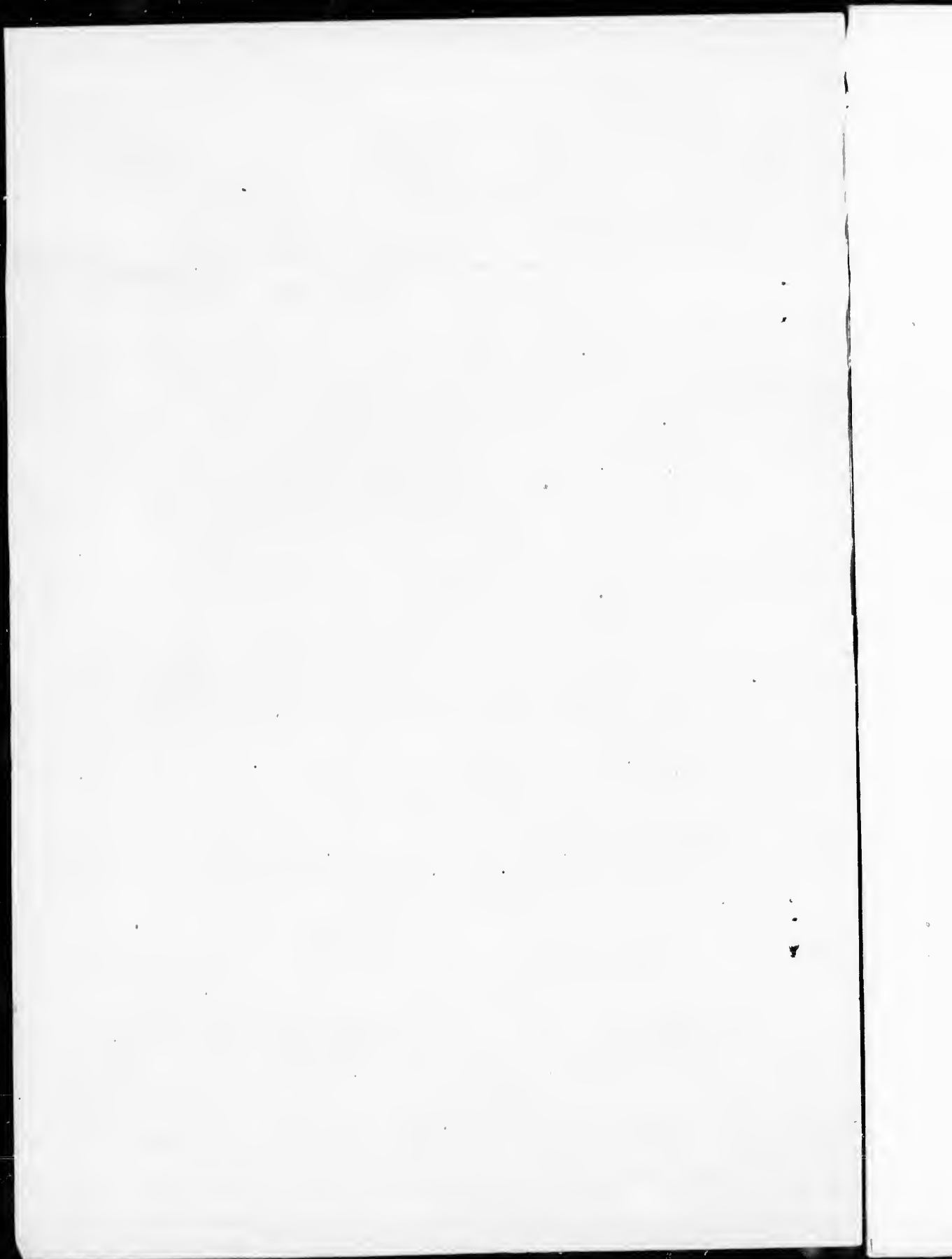
Given under my hand and seal, at Goderich, in the said county, this
. day of 1890.

JUDGE'S CERTIFICATE.

I, ISAAC FRANCIS TOMS, ESQ., Judge of the county court of the county of Huron, pursuant to the 12th Section of "The Voters' List Act," do hereby certify that the within is a correct copy of the list of voters for the year 1890, received by me from the clerk of the municipality of the township of West Wawanosh, according to my revision and correction thereof, pursuant to the provisions of the said Act.

Dated at the day of
in the said county, this day of 1890.

The Sheriff shall, immediately upon receipt of his copies cause one of them to be posted up in a conspicuous place in the Court House; the clerk of the peace, upon receipt of his copies, shall cause one of them to be posted in a conspicuous place in his office; every public or separate school, head master or mistress, shall in like manner put up one on the door of the School House; and every post master shall post up one of his copies in his post office.



1890—VOTERS' LIST—1890

—MUNICIPALITY OF—

WEST WAWANOSH.

SCHEDULE OF POST OFFICES.

No. 1—ST. HELENS.	No. 5—NILE.	No. 9—WHITECHURCH.
2—LUCKNOW.	6—AUBURN.	10—ST. AUGUSTINE
3—BELFAST.	7—WESTFIELD	11—CARLOW.
4—DUNGANNON.	8—FORDYCE.	

PART I.—List of persons entitled to vote at both Municipal Elections and Elections to the Legislative Assembly.

POLLING SUB-DIVISION NO. I—Comprising Concessions 1, 2, 3, 4 and 5 from West Boundary to centre of lot 20, and Concessions 6 and 7 from West Boundary to Side Line between Lots 15 and 16.

No. on Roll. Juror	NAME.	LOT.	Con. or Street.	Owner or Tenant.	P. O Address
15	J Armstrong George n pt n w 1/4 16	1	O M F5
187	J Anderson Thomas n h n h 13.....	5	O M F4
701	J Anderson Thomas G 31 32 86 Dungannon pt 13	5	O M F4
191	Anderson John w 1/4 14.....	3	T F M F4
96	Anderson Wesley pt 13 pt 14.....	3	T M F4
56	J Bailie Wm. e 1/4 14	2	O M F5
60	Bailie John Sr. s h 15 s e 1/4 15.....	2	O M F5
66	Bailie John Jr. e h 17.....	2	O M F5
160	Bell Archib'd w h 18.....	4	O M F4
161	J Bell Robert w h 18.....	4	T M F4
188	J Bowers John e pt 13.....	5	O M F4
193	Brown Charles C e pt 14.....	5	F S M F4
198	Begley Thomas s h w h 16.....	5	O M F4
205	J Bowers Robert pt 18 pt 19.....	5	O M F4
206	Bowers Robert S e pt 19.....	5	O M F4
677	Begley Wm. 44 45	4	T M F4
679	Brown Chancey pt n h 13 etc	4	O M F4
704	Black Anthony 58 59 Dungannon.....	5	O M F4
676	Begley George pt n h 13.....	4	O M F4
597	Bickle Daniel 33 Dungannon.....	5	F M F4
61	Bailie Charles G s h 15 s h e h 14.....	2	F S M F5
62	Bailie James D s h 15 s h e h 14.....	2	F S M F5
189	Berry G W pt s 1/4 13	5	F M F4
63	J Campbell James T s h 16.....	2	O M F5
153	Caldwell George w h 15	4	O M F4
192	J Curwin James e pt 14.....	5	O M F4
700	J Crawford Benjamin 31 32 86 Dungannon pt 13	5	O M F4
671	Case Thomas pt 13 Dungannon	5	T M F4
18	J Dodd Henry 17.....	1	O M F5
113	J Dodd Wm e h 17.....	3	O M F5
101	J Dunkeld Wm e h 14 etc	3	O M F4
102	Dunkeld Alex e h 14.....	3	F S M F4
232	J Durnin Charles w h 15 e h 14.....	6	O M F4
268	J Davidson Thomas w 1/4 14.....	7	O M F4
269	J Davidson Wm e 1/4 14.....	7	O M F4
234	Durnin Robert e h 15 w h 16.....	6	F S M F4
235	Durnin John e h 15 w h 16.....	6	F S M F4
237	Durnin Edward e h 15 w h 16.....	6	F S M F4

1

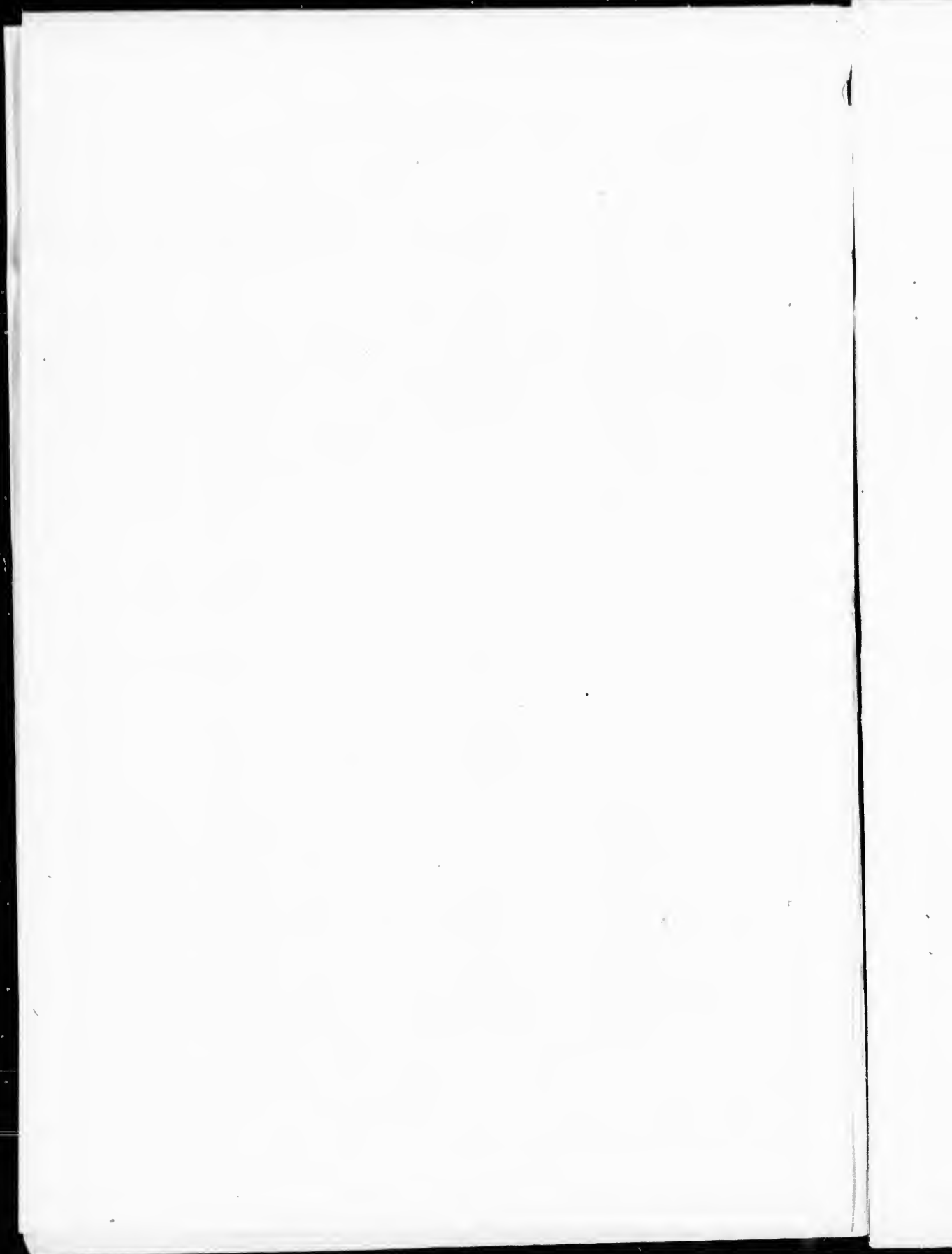
2

3

POLLING SUB-DIVISION NO. I.

2

No. on Roll	Juror	NAME.	LOT.	Con. or Street.	Owner or Tenant.	P. O Address
98	J	Elliott John	... s h n h 13..	5	T M F	...4
271	J	Fowler Daniel	... w h 15..	7	O M F	...4
272	J	Fowler Henry	... w h 15..	7	O M F	...4
682		Fowler Wm	... 78 79 etc Dungannon..	...	O M F	...4
117	J	Finnegan Samuel	... e h 19..	4	O M F	...4
118		Finnegan Wm A	... w h 20..	3	O M F	...4
1	J	Girvin Charles Jr	... n w 1/3 w h 18 con 3	1	O M F	...5
53		Girvin Charles Sr.	... s h 13 pt 14	2	O M F	...5
54	J	Girvin James	... s h 13 pt 14	2	O M F	...5
109	J	Grierson Wm P	... s h 16.	3	O M F	...4
228		Glenn Wm	... pt n h 13	6	O M F	...4
227	J	Glenn Hugh	... pt n h 13	6	O M F	...4
672		Gay John H	... pt 13 Dungannon	4	O M F	...4
230		Glenn David	... pt n h 13..	6	F S M F	...4
231		Glenn Robert	... pt n h 13	6	F S M F	...4
14		Hogan Nicholas	... pt n w 1/4 16	1	T M F	...5
13		Hardy David	... s w 1/4 16..	1	O M F	...5
100	J	Hastie John	... e h w h 14..	3	O M F	...4
159	J	Henderson Robert	... e h 17	4	O M F	...4
698		Hamlin Peter	... 31 36 Dungannon..	...	O M F	...4
114		Hamilton Robert	... s h e h 18..	3	O M F	...4
202	J	Ivers Wm	... 17 e 1/4 16	5	O M F	...4
203	J	Ivers Wilson	... 17 e 1/4 16	5	O M F	...4
2	J	Jackman James W	... s h w h 13	1	O M F	...5
194		Johnston John	... s h 15.	5	O M F	Wingham
207	J	Jones Henry	... pt 19	5	O M F	...4
3		Knight Joseph	... pt s w 1/4 13..	1	O M F	...5
16	J	Kerr Samuel	... w h e h 16..	1	O M F	...5
17	J	Kerr Henry	... e h e h 16	1	O M F	...5
55	J	Kirk Robert J	... n h 13	2	O M F	...5
65		Kirk Andrew	... w h 17	2	O M F	...5
685		Lowrie Robert	... 49 Dungannon	...	O M F	...4
57		Mallough John	... n h 15	2	O M F	...4
58	J	Mallough John H	... n h 15	2	T M F	...4
146	J	Milligan Wm E	... s h 13 e h w h 16..	4	O M F	...4
208	J	Moss Charles	... w pt 20	5	O M F	...4
9		McIlwain David Sr	... pt 15	1	O M F	...5
12	J	McIlwain Andrew	... s h e h 15..	1	O M F	...5
10		McIlwain David Jr	... pt 15..	1	F S M F	...5
11		McIlwain Wm J	... pt 15..	1	F S M F	...5
25	J	McPhee Duncan	... w h 20	1	O M F	...5
116	J	McBrine Moses	... s w q 19..	3	O M F	...4
150		McMath Wm	... pt 13..	4	O M F	...4
147		McMath Hugh	... pt 13	4	O M F	...4
151	J	McLean John	... 14 pt 13 etc	4	O M F	...4
152		McLean John Jr	... 14 pt 13 etc.	4	F S M F	...4
204	J	McCann Peter	... w h 18	5	O M F	...4
194		McArthur Wm	... pt 13..	5	O M F	...4
706		Mallough Joseph	... 60 Dungannon..	...	O M F	...4
64	J	Nivins James	... n h 16 w h 17 cor 3	2	O & T M F	...4
687		Nivins David	... 37 73 74 Dungannon	...	O M F	...1
703		Nivins John	... pt 13..	5	O M F	...4
680		Nichol James	... 68 69 Dungannon	...	O M F	...4



POLLING SUB-DIVISION NO. I.

3

No. on Roll	Juror.	NAME.	LCT.	Con. or Street.	Owner or Tenant.	P. O Address
6	J	Pentland Samuel Gw q 14	1	O M F	...5
7		Pentland Johne q 14	1	O M F	...5
8	J	Pentland Robert Ae q 14	1	O M F	...5
9	J	Pentland John He q 14	1	O M F	...5
227	J	Pentland Alexs h 13 s pt n h 13	6	O M F	...4
272	J	Patton Georgew h 15	7	T M F	...4
190		Proudfoot Wmpt s 13	5	O M F	Goderich
273		Patton Wmw h 15	7	F S M F	...4
154		Redmond Bernarde h 15	4	O M F	...4
155	J	Redmond Jamese h 15	4	O M F	...4
156		Roach Wmw q 16	4	O M F	...4
692	J	Roberts John Ms h 34 35 etc Dungannon		O M F	...4
705		Robinson Charlespt s 13	5	O M F	...4
609		Roach Samuel36 pt 31 Dungannon		O M F	...4
95		Stothesis Stephenn h s h 13 etc	3	O M F	...4
99	J	Sanderson Samuel Ept 14 pt 13	3	O M F	...4
93	J	Stothesis Wms q 13	3	O M F	...4
94	J	Stothers Josephn h s h 12 etc	3	O M F	...4
110	J	Smylie James Dn h 16	3	O M F	...4
197	J	Smith Hamiltons w cor 16	5	O M F	...4
158	J	Stewart Robertw h 17	4	O M F	...4
104	J	Sprout Matthews h 15	3	T M F	...4
199	J	Smith Wmn h w h 16	5	O M F	...4
200		Smith Jamesw h e h 16	5	O M F	...4
201	J	Smith Johnw h e h 16	5	T M F	...4
267	J	Stewart Andrew13	7	O M F	...4
690		Sprout Andrew40 41 42 61 Dungannon		O M F	...4
681		Sprout David66 67 Dungannon		O M F	...4
673	J	Smith Wmpt n h 13 e h 17	4	O M F	...4
111		Smylie James Wn h 16	3	F S M F	...4
195	J	Saunby Georges h 15	5	T M F	...4
702		Stothers Stephenpt 13	5	O M F	...4
691		Sprout Wm61 Dungannon		O M F	...4
105		Sprout Davids h 15	3	F S M F	...4
112		Smylie Samuel Gn h 16	3	F S M F	...4
4	J	Taylor Johnw h e h 13	1	O M F	...5
5	J	Taylor Louise h e h 13	1	O M F	...5
689		Treleaven Richard62 63 Dungannon		O M F	...4
688		Thompson Wm38 39 Dungannon		O M F	...4
684		Trimble James43 pt 47 etc Dungannon		O M F	...4
19	J	Watson Wm19 s h 18	1	O M F	...5
67	J	Wilson Wm Hw h 19 18 pt 20	2	O M F	...4
162	J	Wilson Charlesw h 19	4	O M F	...4
115	J	Wilson John Cpt 18 pt 19	3	O M F	...4
163	J	Wilson Wme h 19	4	O M F	...4
695	J	Whyard Jamesu h 34 54 55 70 Dungannon		O M F	...4
674		Walker Jamespt n h 13	4	O M F	...4
708		Ward Joseph Gpt 13	5	O M F	...4
157	J	West Johne h 16	4	O M F	...2
107		Young Matthewn h 15	3	T M F	...4
108	J	Young R Tn h 15	5	F S M F	...4
678		Young George Spt 13	4	O M F	...4
196		Young Thomass h 15	5	O M F	...4

THE HISTORY OF THE

1791

1791

1791

1791

1791

POLLING SUB-DIVISION NO. I.

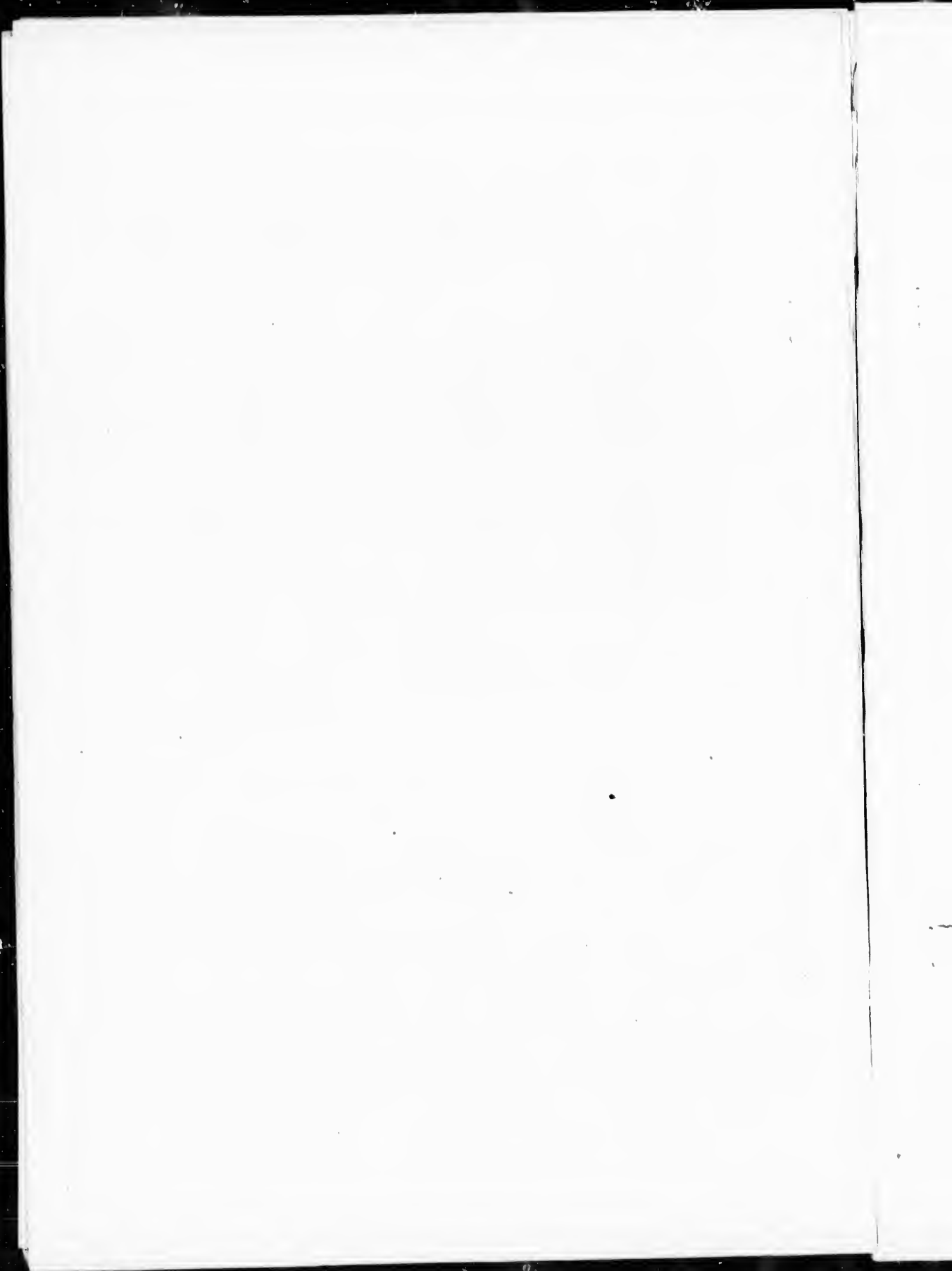
4

PART II --Persons entitled to vote at Municipal Elections only.

No. on Roll Juror	NAME.	LOT.	Con. or Street.	Owner or Tenant.	P. O Address
233	Durnin Wm	...e h 15 etc	6	O	...4
164	Finnigan Mrs M J	...20	4	O	...4
14	Gilmour Margaret	...pt n w 1/4 16	1	O	...5
103	Sproul Margaret	...s h 15	3	O	...4
97	Taylor Eleanor Mrs	...s h n h 13	3	O	...4
20	Watson Mary	...19 and s h 18	1	O	...5
686	Wilson Margaret	...50 Dungannon		O	...4
683	Willis Mrs	...46 s h 47 Dungannon		O	...4
106	Young Mrs	...n h 15	3	O	...4
696	Whyard Mrs	...87 pt 13	5	O	...4

PART I.I--Persons entitled to vote at Elections to the Legislative Assembly only.

236	Durnin Wm	...e h 15	6		M F	...4
149	McMath Hugh Jr.	...pt 13	4		M F	...4
148	McMath James	...pt 13	4		M F	...4
707	McIntyre Wm	...70 Dungannon			O M F	...4
68	Wilson James A	...18 w h 19 w h 20	2		M F	...4
59	Way Cassey	...n h 15	2		M F	...4
675	Walker Thomas H	...pt 13	4		M F	...4
693	Young Samuel	...s h 34 Dungannon			M F	...4

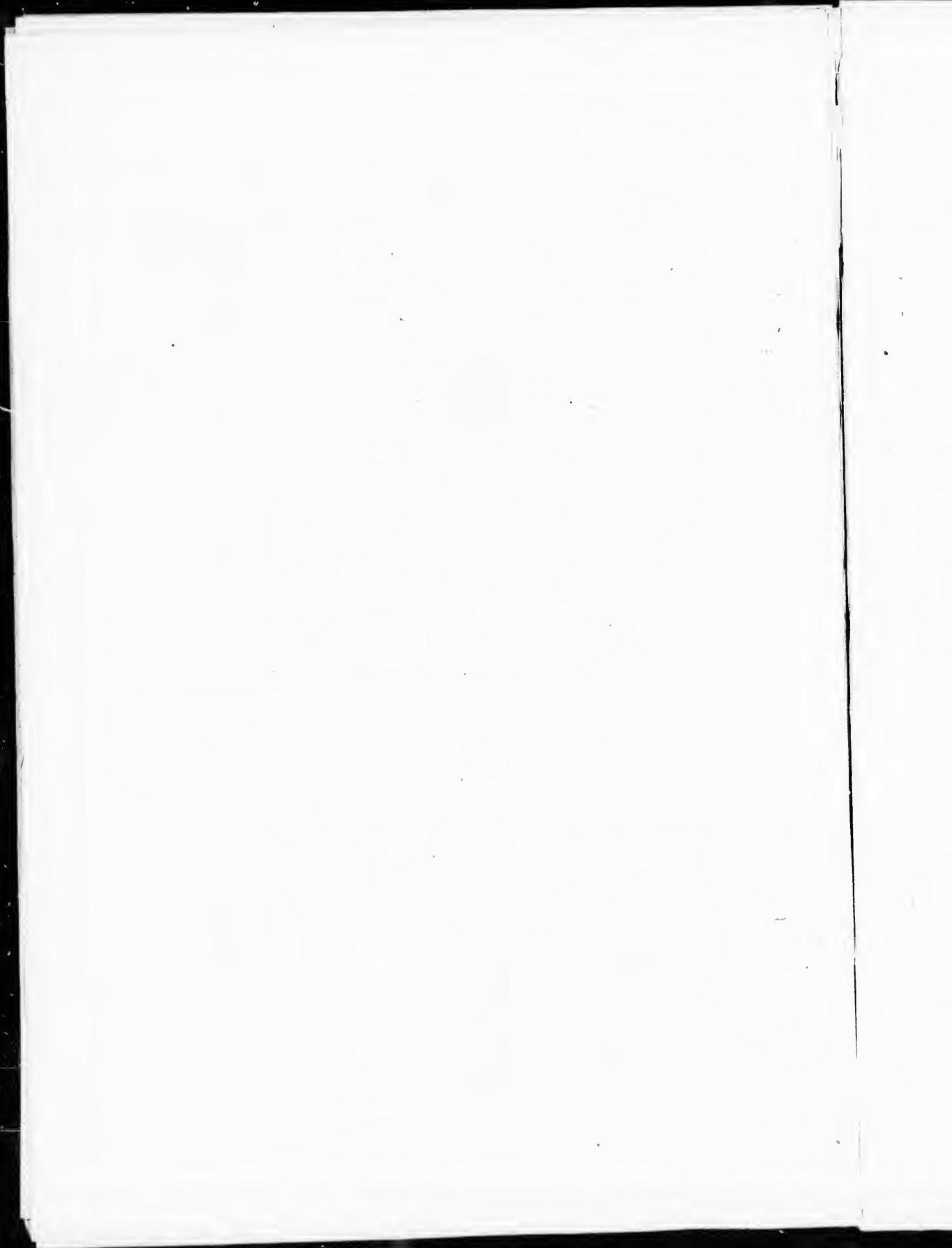


POLLING SUB-DIVISION NO. 2.

5

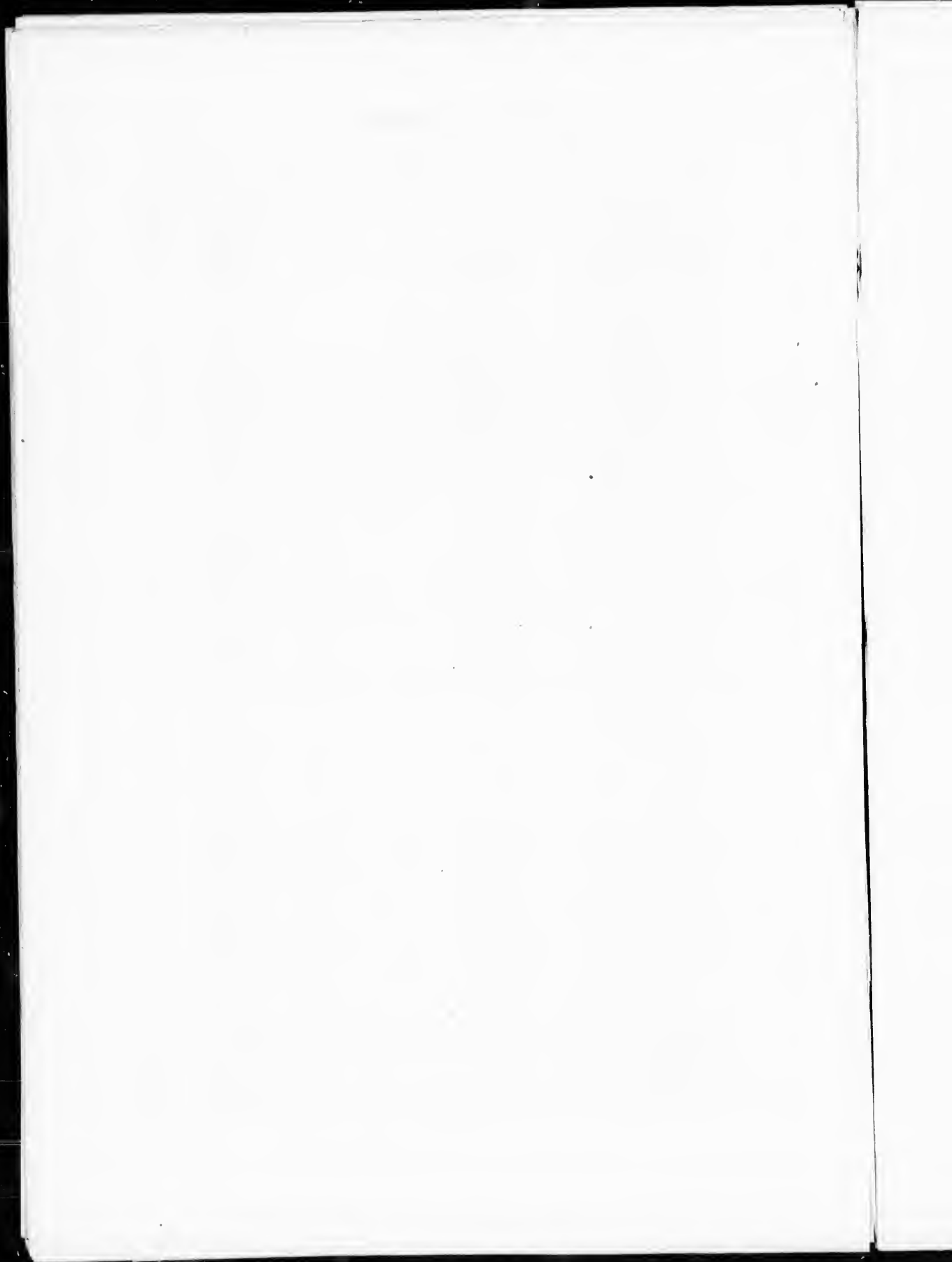
Comprising concessions 1, 2, 3, 4 and 5 from centre of lot 20 to Eastern Boundary.

No. on Roll	Juror	NAME.	LOT.	Con. or Street.	Owner or Tenant.	P. O Address
212	J	Andrews Wm	s h 21	5	O M F	6
659	J	Anderson Thomas	pt 8 pt 9 Manchester	1	O M F	6
42	J	Askworth Thomas	w h 26	1	T H M F	6
133	J	Bruce James	e h 23	3	O M F	6
134	J	Bruce John	e h 23	3	O M F	6
213	J	Boyle Henry	n h 21	5	O M F	10
173	J	Boyle John	w h 23	4	O M F	10
215	J	Boyle Bernard	w h 23	5	O M F	10
216	J	Boyle James	e h 23	5	O M F	10
656	J	Brown Job P	82 Manchester		O M F	6
654	J	Bohn Helmuth	104 105 Manchester		O M F	6
246	J	Beadle George	pt 27 Manchester see S-D 3		O M F	6
637	J	Beadle Henry	100 101 102 Manchester		O M F	6
665	J	Bickle Henry	86 87 Manchester		T M F	6
51	J	Clark Oliver	pt 27	1	O M F	6
44	J	Caldwell Samuel	83 Manchester	1	O M F	6
46	J	Cullis John	pt 26 pt 27	1	O M F	6
75	J	Clark Alex	s 1/2 22 s w 1/2 23	2	T M F	6
171	J	Clifton Joseph	s h 22	4	O M F	4
223	J	Cummings Martin	pt 26	5	O M F	7
650	J	Clark Samuel	128 131 Manchester		O M F	6
47	J	Cullis Albert	pt 26 pt 27	1	O M F	6
91	J	Chester Thomas	s h 27 etc	2	T M F	6
92	J	Chester Matthe v	s h 27 etc	2	T M F	6
172	J	Clifton Joseph Jr	s h 22	4	F S M F	6
38	J	Davidson Wm	pt 25	1	O M F	6
635	J	Downs Wm	86 87 Manchester		O M F	6
657	J	Etling John	pt 27	1	T M F	6
638	J	Elkin Eneas	137 Manchester		O M F	6
141	J	Elleroy John	25	3	T M F	6
77	J	Fluker John	s h 24	2	O M F	6
78	J	Fluker Wm	s h 24	2	O M F	6
142	J	Feagan Joseph	s w q 22 pt 27	3	O M F	6
143	J	Feagan Andrew	s w q 22 pt 27	3	O M F	6
652	J	Ferguson John A	106 107 120 121 Manchester		O M F	6
165	J	Finnigan James	w h 21	4	O M F	4
167	J	Gibson Elijah	pt e h 21	4	O M F	6
166	J	Gibson James	pt e h 21	4	O M F	6
633	J	Gordon D M	83 Manchester		T M F	6
670	J	Gott Robert	pt 6 Manchester		T M F	6
23	J	Hamilton Thomas	s e q 20 s w q 21	1	O M F	4
76	J	Hill Wm	e h 23	2	O M F	6
219	J	Higginbottom John	e h 24 s w h 25 cor 6	5	O M F	6
225	J	Harrison Wm A	27	5	O M F	7
226	J	Harrison John A	27	5	F S M F	7
642	J	Helwig Conard	134 Manchester		O M F	6
35	J	Howitt George D	e h 24	1	T M F	6
646	J	Hoar John	136 Manchester		O M F	6
668	J	Houston Charles	3 Manchester		T M F	6
28	J	Jones Wm	w h e h 22	1	O M F	6
126	J	Johnston James	w h 24 pt 22	3	O M F	6
129	J	Johnston Samuel	pt 22 w h 24	3	O M F	6
29	J	Jones James	w h e h 22	1	O M F	6
127	J	Johnston Marshall	w h 24 e h 22	3	F S M F	6
628	J	Jackson Archibald C	3 Manchester		O M F	6
128	J	Johnston Samuel	w h 24 pt 22	3	F S M F	6



POLLING SUB-DIVISION NO. 2.

No. on Roll.	Juror.	NAME.	LOT.	Con. or Street.	Owner or Tenant.	P. Address	O
43	J	Lawler Thom.s	pt w h 26	1	O M F	...	6
214	J	Leddy Wm Sr	22	5	O M F	...	10
220	J	Leddy Thomas	s h 25	5	O M F	...	10
217	J	Leddy Wm	w h 24	5	O M F	...	10
218	J	Leddy Daniel	w h 24	5	O M F	...	10
643	J	Lemp George	125 Manchester	...	O M F	...	6
630	J	Lockhart Matthew	4 Manchester	...	O M F	...	6
662	J	Lawson Jcseph	part 27	1	O M F	...	6
45		Munroe D E	s pt 26	1	T M F	...	6
648		Murdoch John	129 130 Manchester	...	T M F	...	6
79	J	Medd Robert	s h 25 and other premises	2	O M F	...	6
80		Medd Joseph	s h 25 and other premises	2	F S M F	...	6
81		Medd Stephen	s h 25 and other premises	2	F S M F	...	6
82		Medd Robert Jr	s h 25 and other premises	2	F S M F	...	6
83		Medd John	s h 25 and other premises	2	F S M F	...	6
85	J	Mills Isaac	n w q 25	2	O M F	...	6
86	J	Mills John	w h 26 and other premises	2	O M F	...	6
87		Mills John H	w h 26 and other premises	2	O M F	...	6
119	J	Morland Hugh	e h 20 e h 19	3	O M F	...	4
120		Morland James H	e h 20 e h 19	3	F S M F	...	4
170	J	Moss John	n h 22	4	O M F	...	6
177		Moss John Sr	n h 25	4	O M F	...	6
663		Mole John	n pt 6 Manchester	4	O M F	...	6
73	J	McCabe Alex	n h 22 pt 23	2	O M F	...	6
135	J	McKenzie Thomas	e h 24 etc	3	O M F	...	4
136		McKenzie Robert A	e h 24 etc	3	F S M F	...	4
178		Moss Albert	n h 25	4	F S M F	...	4
221	J	McGuire Patrick	pt 25 pt 26	5	O M F	...	10
222	J	McGuire Edward	pt 25 pt 26	5	O M F	...	10
660		McKenzie Alex	pt 8 Manchester	1	O M F	...	6
669		Maley Henry	pt 27	1	O M F	...	6
84	J	Mills Wm	n w q 25	2	O M F	...	6
121		Moreland Wm J	e h 19 e h 20	3	F S M F	...	4
137		McKenzie Donald	e h 24 etc	3	F S M F	...	6
183	J	Mitchell Thomas	26	4	T M F	...	7
41		Neaves Wm	pt w h 26	1	O M F	...	6
88	J	Nicholson Thomas	n h 27	2	O M F	...	6
124	J	Nugent Patrick	n h w h 22	3	O M F	...	4
651		Nixon James	126 127 132 123 Manchester	...	O M F	...	6
89		Nicholson John	n h 27	2	F S M F	...	6
70	J	Oliver Wellington	w h 21 s e q 20	2	O M F	...	6
71	J	Oliver Francis	w h 21 s e q 20	2	O M F	...	6
37	J	Pierce John	w pt 25	1	O M F	...	6
122	J	Plunkett John	n pt 21	3	O M F	...	6
123	J	Plunkett Wm	s pt 21	3	O M F	...	6
130	J	Phalen Wm	pt w h 23	3	O M F	...	6
131	J	Phalen Daniel	pt w h 23	3	O M F	...	6
132	J	Phalen Patrick	pt w h 23	3	O M F	...	6
209		Pollard Edmund	e pt 20	5	O M F	...	4
211	J	Pollard Anthony	e pt 20	5	T M F	...	4
210	J	Pollard James	e pt 20	5	T M F	...	4
224	J	Phalen Richard	pt 26	5	O M F	...	7
125		Plunkett Robt J	s pt 31	3	F S M F	...	6
48		Quigley James	pt 26	1	T H M F	...	6
24		Rutledge Robert J	s p e h 21	1	F S M F	...	6
25	J	Rutledge George	n pt 21	1	O M F	...	6
27	J	Rose James	w h 22 pt 21 con 2	1	O & T M F	...	6
72	J	Rose Alex	pt 21	2	O M F	...	6
181		Robinson Archibald	w h 27	4	O M F	...	7
145		Radcliffe Thomas	s 27	3	F S M F	...	6
653		Rodgers George W	pt 27	1	T M F	...	6
636		Rae James	86 87 Manchester	...	T M F	...	6



POLLING SUB-DIVISION NO. 2.

7

No. on Roll.	Juror.	NAME.	LOT.	Con. or Street.	Owner or Tenant.	P.	O
69	J	Smith Joseph	e h 18 con 4 s h e h 20	2	O M F	...	4
49		Symington James	n e pt 26	1	O M F	...	6
90	J	Scott Samuel	s h 27 etc	2	O M F	...	6
175	J	Stafford Michael	e h 23 w h 23	4	O M F	...	10
179	J	Scringeur Alex	s h 25	4	O M F	...	6
180		Scringeur Wm	s h 25	4	F S M F	...	6
182	J	Scott Archibald	26	4	O M F	...	7
658		Shoultz Conard	s pt 6 Manchester	4	O M F	...	6
174		Stafford John	e h 23	4	T M F	...	10
661		Shoultz John	7 Manchester	1	O M F	...	6
627		Stitt Joseph	pt 27	1	O M F	...	6
50		Symington John	n e pt 26	1	O M F	...	6
639		Searles Simeon	122 123 Manchester	1	O M F	...	6
644		Stalker Robert	124 Manchester	1	O M F	...	6
649		Symington Wm	129 130 Manchester	1	O M F	...	6
169		Thompson Richard	pt e h 21	4	O M F	...	6
176	J	Taylor Henry G	w h 24	4	O M F	...	9
32		Windmill Oscar	e h 23	1	F S M F	...	6
31	J	Windmill James	e h 23	1	O M F	...	6
40		Willard Jonathan	s pt 26	1	O M F	...	6
52	J	Wilson Wm D	s e pt 27 112 113 114	1	O M F	...	6
33		Wilson James	e h w h 24	1	O M F	...	6
138		Washington John	25	3	O M F	...	6
139	J	Washington Charles	25	3	T M F	...	6
140	J	Washington Joseph	25	3	T M F	...	6
168		Walsh John	n e cor 21	4	O M F	...	6
184		Woods James	pt 27	4	O M F	...	7
185	J	Woods George	pt 27	4	O M F	...	7
186		Woods James Jr	pt 27	4	F S M F	...	7
645	J	Wettlanfer Ludw'g	110 111 116 117 119 Manchester	1	O M F	...	6
653		Wenzel Oswald	108 109 Manchester	1	O M F	...	6
34		Wilson David	e h w h 24	1	T M F	...	6
39		Whitney George	s w cor 26	1	O M F	...	6
754		Wilson William	s h w h 23	2	O M F	...	6
730		Wray Robert	pt 27	1	T M F	...	6
647		Wettlanfer Conard	pt 27	1	H M F	...	6
30		Young Gordon	w h 23 pt 22	1	O M F	...	11
632	J	Youngblut George F	5 and pt 27 Manchester	1	O M F	...	6
666	J	Young James	2 9 1 10 pt 8 Manchester	1	O M F	...	6
667		Young Alex	1 2 10 pt 8 Manchester	1	O M F	...	6
646		Youngblut Eckhart	115 Manchester	1	O M F	...	6

PART II—Persons entitled to vote at Municipal Elections only.

631		Blair Mrs	pt 5 Manchester	1	O	6
74		Duncan Mrs	n h s h 22	2	O	6
641		Heapy Mrs	135 Manchester	1	O	6
22		Howell Mrs Jane	n h e h 20	1	O	11
36		Knight Mrs	e h 24	1	O	6
629		Rowell Mrs	4 Manchester	1	T	6
24		Rutledge Mrs	s pt e h 21	1	O	6
144		Radcliffe Mrs Janet	s 27	3	O	6
664		Thompson Mrs	pt 6 Manchester	1	O	6

PART III—Persons entitled to vote at Elections to the Legislative Assembly only.

635		Downs Albert	86 87 Manchester	1	M F	6
-----	--	--------------	------------------	---	-----	---

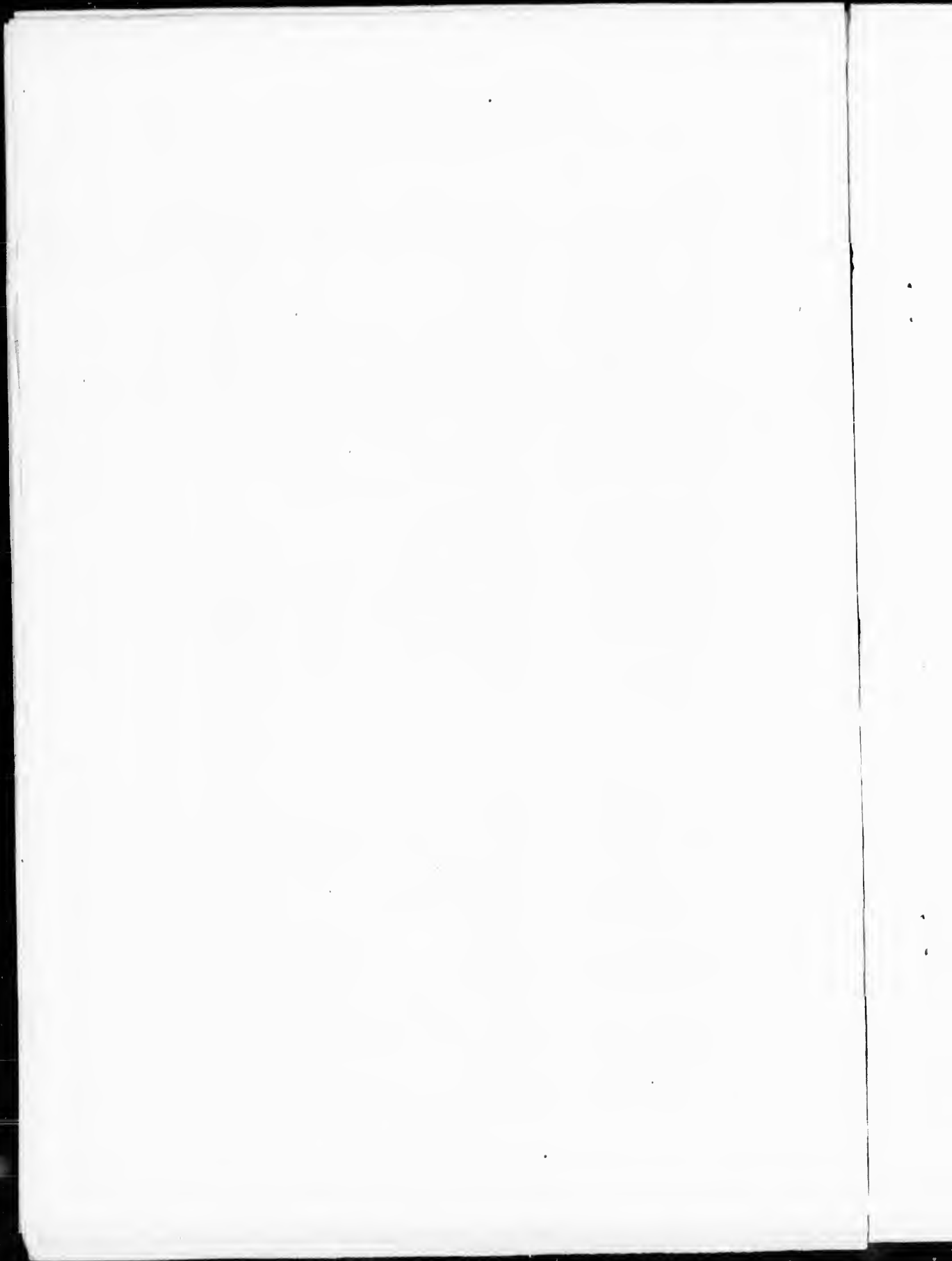
.....

POLLING SUB-DIVISION NO. 3.

8

Comprising concessions 6 and 7, from side line between lots 15 and 16, to east boundary, and concessions 8, 9 and 10.

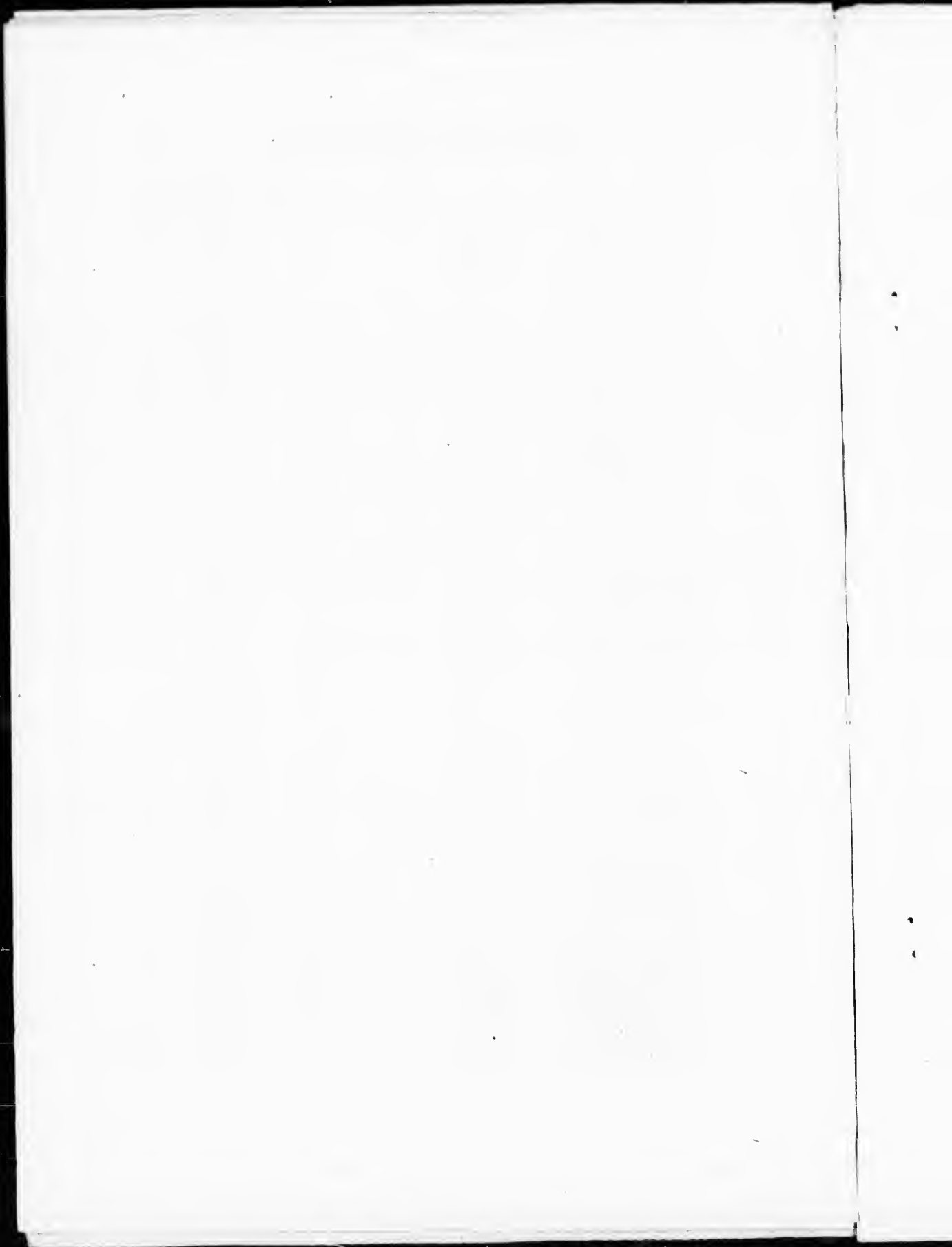
No. on Roll.	Juror	NAME.	LOT.	Con. or Street.	Owner or Tenant.	P. Address
244	J	Agar George	e h 18 and tenant e h 14	6	O M F	1
308		Agar Thomas	n h 13 pt 13 con 10	8	O M F	3
310	J	Alton Daniel	e h 14	8	O M F	3
327		Alexander David	n e cor 21	8	O M F	1
330		Alexander Thomas	23 w h 24	8	O M F	1
331	J	Alexander William	23 w h 24	8	O M F	1
332	J	Alexander George	23 w h 24	8	O M F	1
341	J	Armstrong William	w h 26	8	O M F	8
342	J	Armstrong Wm Jr	w h 26 w h 25	8	T M F	8
349		Alton Jeremiah	pt n h 13	9	O M F	3
383	J	Anderson Richard II	pt 24 pt 25 pt 26	9	O M F	8
384	J	Anderson Wm T	pt 24 pt 25 pt 26	9	O M F	8
385	J	Anderson Alexander	pt 24 pt 25 pt 26	9	O M F	8
386	J	Anderson James	pt 24 pt 25 pt 26	9	O M F	8
395		Alton Samuel	pt 13	10	O M F	3
397		Alton James	pt 13	10	F S M F	3
333	J	Alexander Thomas Jr	w h 24 23	8	O M F	8
343	J	Armstrong John	w h 26 w h 25	8	T M F	8
396		Alton Samuel II	w p and e h 13	10	F S M F	3
366		Anderson R S G Rev	n p e h 18	9	T M F	1
289	J	Brophy George	w h 23	7	O M F	10
290	J	Brophy Edward	e h 23 pt 24	7	O M F	10
346	J	Brophy William	s e 1/4 24 w h 27 con 8	7	O M F	10
400		Brown James	28 29 Belfast	10	O M F	3
403		Bradford Robert	18 19 Belfast	10	T M F	3
427	J	Barbour William	n pt 24 etc see sub-div 4	10	O M F	1
428		Barbour James	n h 21 see sub-div 4	12	O M F	1
430	J	Barbour John	s h 24	10	O M F	1
429	J	Barbour Wm R	w h 24 etc see sub-div 4	10	O M F	1
246	J	Beadle Geo Sr	e h 19 and e h 18 con 7	6	T M F	4
247	J	Beadle George Jr	e h 18 con 7	7	T M F	4
242		Clark John	e h 18	6	T M F	4
243		Clark Robt	e h 18	6	T M F	4
238	J	Campbell William	w h 16	6	O M F	4
265	J	Channey John	e h 27	6	O M F	7
297	J	Craig John	s w 1/4 25 etc	7	O M F	10
309	J	Cook Samuel	w h 14	8	O M F	3
319		Cameron John	s h 18	8	O M F	1
320	J	Cameron William	s h 18	8	O M F	1
387	J	Cummings Thomas	n h 24	9	O M F	1
388	J	Cummings Patrick	n h 25	9	O M F	1
301		Channey Edward	e h 26	7	O M F	10
324		Carson Jason	n e cor 24	8	T M F	10
254		Craig Edward	pt w h 24	6	T M F	10
284		Cameron H D	s h 18	7	O M F	Hamilton
239		Durnin Charles	w h 17	6	O M F	4
357	J	Durnin Thomas	w h 27 e h 16 cor 9	7	O M F	1
329	J	Daveaux Patrick	22	8	H M F	1
359		Durnin William	e h 17 etc	9	O M F	1
358		Durnin John	w h 17	9	O M F	1
367	J	Durnin Edward	19	9	O M F	1
374	J	Donovan Daniel	s h e h 21	9	O M F	1
360		Durnin James	e h 17 etc	9	F S M F	1
304		Donnelly Owen	s pt 27	7	T M F	10
368		Durnin Robert R	19	9	F S M F	1
347	J	Edwards James	s h 13	9	O M F	3
277	J	Ferguson Edward A	w h w h 17	7	O M F	4
278	J	Ferguson James	e h w h 17	7	O M F	4
281	J	Fowler William J	e h 17	7	O M F	4
282	J	Fowler Edward	w h 18	7	O M F	4
313	J	Fitzpatrick John	e h 17	8	O M F	1



POLLING SUB-DIVISION NO. 3.

9

No. on Roll	Juror	NAME.	LOT.	Con. or Street.	Owner or Tenant.	P. Address
314	J	Fitzpatrick Edward	e h 17	8	O M F	1
339		Flynn James	n h 25	8	H M F	8
340		Flynn Joseph	n h 25	8	H M F	8
369	J	Forehen John	w h 20	9	O M F	1
283		Fowler Robert	pt w h 18	7	T H M F	4
375	J	Ford James	n h e h 21	9	O M F	1
391	J	Forehen Jeremiah	s h 27 9	9	T M F	1
376	J	Forehen James	n h w h 22	9	O M F	1
280		Ferguson James Jr	e h w h 17	7	F S M F	4
281		Ferguson Robert	e h w h 17	7	F S M F	4
377		Forehen Andrew	s h w h 22	9	T M F	1
352		Grenache Jehoiacham	e h 15	8	O M F	2
378	J	Glasgow Peter	e h 22	9	O M F	1
389	J	Glasgow Andrew	e h 22	9	O M F	1
245		Handin John	e h 19	6	O M F	4
356	J	Henry George	pt 16	9	O M F	1
394		Haines Arthur	n h 27	9	Householder	M F 8
409	J	Harper Archibald	e h 15	10	O M F	3
438	J	Haines Edward Jr	s h 27	10	O M F	8
439	J	Haines Robt	s h 27	10	O M F	8
348	J	Irwin George	s h n h 13	9	O M F	3
420		Johnston James	w h 20	10	O M F	1
256	J	Kearney Patrick	pt 25 s h 24	6	O M F	10
380	J	Kinahan Wm Jr	w h 23	9	O M F	1
381		Kinahan Wm Sr	e h 23 etc	9	O M F	1
382	J	Kinahan Joseph	e h 23 etc	9	O M F	1
257	J	Leddy John	pt n h 24	6	O M F	10
259	J	Lougheed Wm	w h 26	6	O M F	10
260	J	Lougheed Aron	w h 26	6	F S M F	10
296	J	Leddy Michael	p s h 26	7	O M F	10
404		Lougheed John	n w cor 13	10	O M F	3
431	J	Lockhart Robert	s h 25	10	O M F	3
261		Lougheed Wm Jr	w h 26	6	F S M F	10
298		Miller Charles	e h 25	7	O M F	10
323		Murray Robert	e h 19	8	O M F	1
324	J	Murray David	e h 19	8	O M F	1
389		Murphy Michael	pt s e 1/4 26	9	O M F	8
411		Morton Edward	w h 17	10	O M F	1
729	J	Miller Richard K	n w cor 19	10	O M F	1
251	J	McCabe Michael	s h 21 pt 22 pt 23	6	O M F	10
252	J	McCabe John	s h 21 pt 22 pt 23	6	F S M F	10
285	J	McAllister Robert	w h 21 e 1/4 20	7	O M F	1
286	J	McAllister William	e h 21	7	O M F	1
315	J	McRoberts Thomas	n h 18 etc	8	O M F	1
316	J	McRoberts Edward	n h 18 etc	8	O M F	1
317	J	McRoberts Isaac	n h 18 etc	8	O M F	1
361		McDonald James	w h 18	9	O M F	1
362		McDonald Duncan	w h 18	9	F S M F	1
363		McDonald Angus	w h 18	9	F S M F	1
390		McBurney Hugh	n e 1/4 26	9	O M F	8
414	J	McDonald Hugh	w h 18	10	O M F	1
416	J	McDonald Angus	e h 18	10	O M F	1
255		McGee Rev Chas	u pt 24	6	O M F	10
415		McDonald Duncan	w h 18	10	F S M F	1
305		McEwen John S	s e cor 27	7	O M F	7
294	J	McCabe Michael	n p 24	6	F S M F	10
293		McCabe John D	u pt 24	6	F S M F	10
318		McRoberts Charles	s h 18 etc	8	F S M F	1



PCLLING SUB-DIVISION NO. 3.

10

No. on Roll	Juror.	NAME.	LOT.	Con. or Street.	Owner or Tenant.	P. O. Address
302	J	Nixon Alexander	h 27	7	T M F	7
322	J	Naylor George	w h 19 w 1/2 15	8	T M F	1
263	J	O'Connor Patrick	w h 27	6	O M F	10
264	J	O'Connor John	w h 27	6	O M F	10
250	J	Plowman Edward	n h 21	6	T M F	10
437	J	Phillips John	n e cor 27	10	O M F	8
257	J	Robinson James	e h 25 pt 25 con 7	6	O M F	10
262	J	Robb Charles	e h 26	6	O M F	10
288	J	Redmond John	e h 22	7	O M F	10
351	J	Ritchie Andrew	pt 13 and etc.	9	T M F	3
354	J	Ryan Henry	pt w h 14	9	O M F	3
373	J	Radcliffe John	w h 21	9	T M F	1
406	J	Rutherford Hugh Sr.	14	10	O M F	3
407	J	Rutherford Donald	14	10	F S M F	3
408	J	Rutherford Hugh Jr.	w h 15	10	O M F	3
425	J	Ramage James	n h 22	10	O M F	1
458	J	Robinson James J.	e h 25 pt 25 con 7	6	O M F	10
328	J	Ross A M.	22	9	O M F	Toronto
673	J	Smith Wm J.	e h 17 see sub-div 4	6	O M F	4
241	J	Staples George	e h 17	6	T M F	4
364	J	Stewart Alexander	e h 18	9	O M F	10
311	J	Smith Robert	16	8	O M F	1
370	J	Sturdy Robt.	e h 20	9	O M F	1
371	J	Sturdy Walter	e h 20	9	O M F	1
392	J	Scott Wm W.	n h 27	9	O M F	8
393	J	Scott Frederick S.	n h 27	9	F S M F	8
410	J	Somerville Thomas B.	s h 16	10	O M F	3
419	J	Saunders Thomas	e h 20	10	T M F	1
432	J	Smith Cornelius	e h 20	10	O M F	1
417	J	Sheriff Wm	n w cor s h 19	10	O M F	1
247	J	Smith George	pt 20 pt 20 con 7	6	O M F	10
433	J	Smith William	n h 25	10	F S M F	1
434	J	Smith George	s h 25	10	F S M F	1
446	J	Stalker Joseph	n e cor 27	10	H M F	1
249	J	Thompson William	w 1/2 20 w h 19 n 1/2 22	6	F S M F	6
248	J	Thompson John	n e 1/2 20 w h 19 n 1/2 22	6	O M F	6
303	J	Thompson Samuel	pt e h 27	7	O M F	6
345	J	Tisdale George	pt 26 pt 27	8	O M F	8
436	J	Troy Patrick	n h 27	10	O M F	8
401	J	Thompson James	28 29 Belfast	10	T M F	3
423	J	Todd William J.	e h 21	10	O M F	1
424	J	Todd Thomas Jr.	e h 21	10	O M F	1
240	J	Wilson Joseph Jr.	w h 18	6	O M F	1
274	J	Wilson Joseph Sr.	e h 16 and e h 16	6 & 7	O M F	1
275	J	Wilson Wm	e h 16 and e h 16	6 & 7	O M F	1
299	J	Wallace Thomas	w h 26	7	O M F	10
300	J	Wallace George	w h 26	7	F S M F	10
306	J	Woods Thomas	s h 13	8	O M F	4
307	J	Woods Thomas Jr.	s h 13	8	O M F	1
312	J	White Thomas	w h 17	8	O M F	1
326	J	Woods Thomas	e h 20 pt 21	8	O M F	10
336	J	Walsh Thomas	pe h 24	8	O M F	10
338	J	Walsh William	s h 25	8	O M F	1
350	J	White George	e h 14	9	O M F	3
353	J	Ward George	pt w h 14	9	O M F	3
335	J	Woods Mathew	e h 14	9	O M F	3
402	J	Wilson William	18 and 19 Belfast	10	O M F	3
412	J	Woods John	e h 17 and 23 15 con 9	10	O M F	1
426	J	Woods William	e h 23	10	O M F	1



POLLING SUB-DIVISION NO. 3.

11

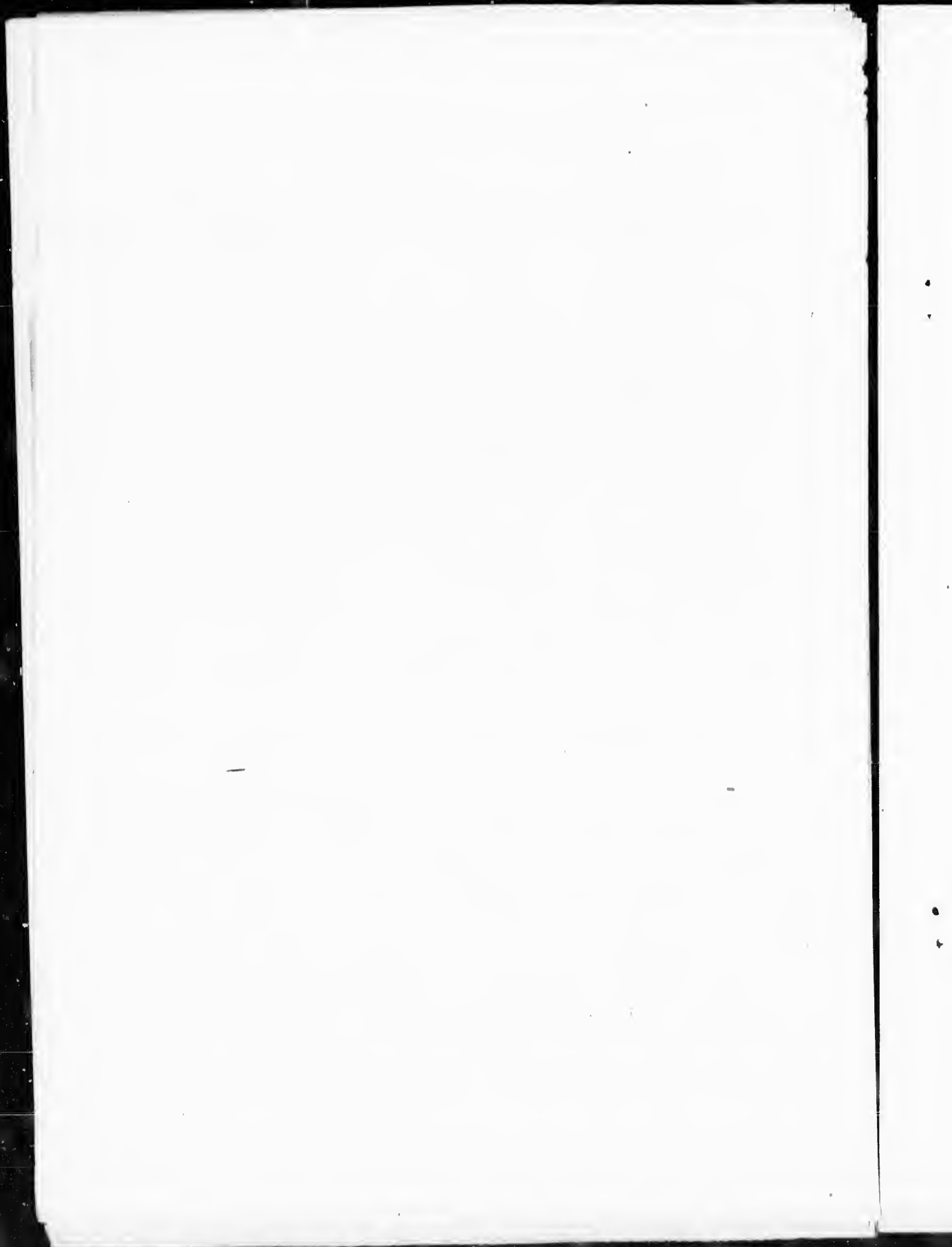
No. on Roll	Juror.	NAME.	LOT.	Con. or Street.	Owner or Tenant.	P. O. Address
418		Wilson James	e h 20	10	O M F	1
435	J	Webster John	26	10	O M F	1
350		White George	pt 13	9	O M F	3
337	J	Walsh Patrick	e pt 24	8	O M F	10
422	J	Woods Alexander	w h 21 e h 14 con 10 (sub-div 4)	10	O M F	1
421	J	Woods Robert	w h 21 e h 14 con 10 (sub-div 4)	10	O M F	1
276		Wilson James	e h 16	7	F S M F	1
295		Walsh Frank	r h 24	7	T M F	10
413		Woods Robinaon	e h 17 w h 23 15 con 9	10	T M F	1

PART II—Persons entitled to vote at Municipal Elections only.

287		Beadle Mrs	w h 22	7	O	10
321		Fowler Mary Ann	w h 19 w 1/4 15	8	O	4
344		Kee Margaret	n e 1/4 26	8	O	8
273		McCabe Mary Ann	n h 21 n h 23	6	O	10
405		Phillips Mrs	pt 14	10	O	3
372		Radcliffe Mary	w h 21	8	O	1
325		Taylor Hannah	n h w h 20	8	O	1
291		Welsh Mrs	s p 24	7	O	10
335		Douglas Mrs	n e cor 24	8	O	Mich

PART III—Persons entitled to vote at Elections to the Legislative Assembly only.

398		Alton Thos H	w h 13	10	M F	3
365		Barkloy David	o h 18	9	M F	1
266		Sillib William	e h 27	6	M F	7

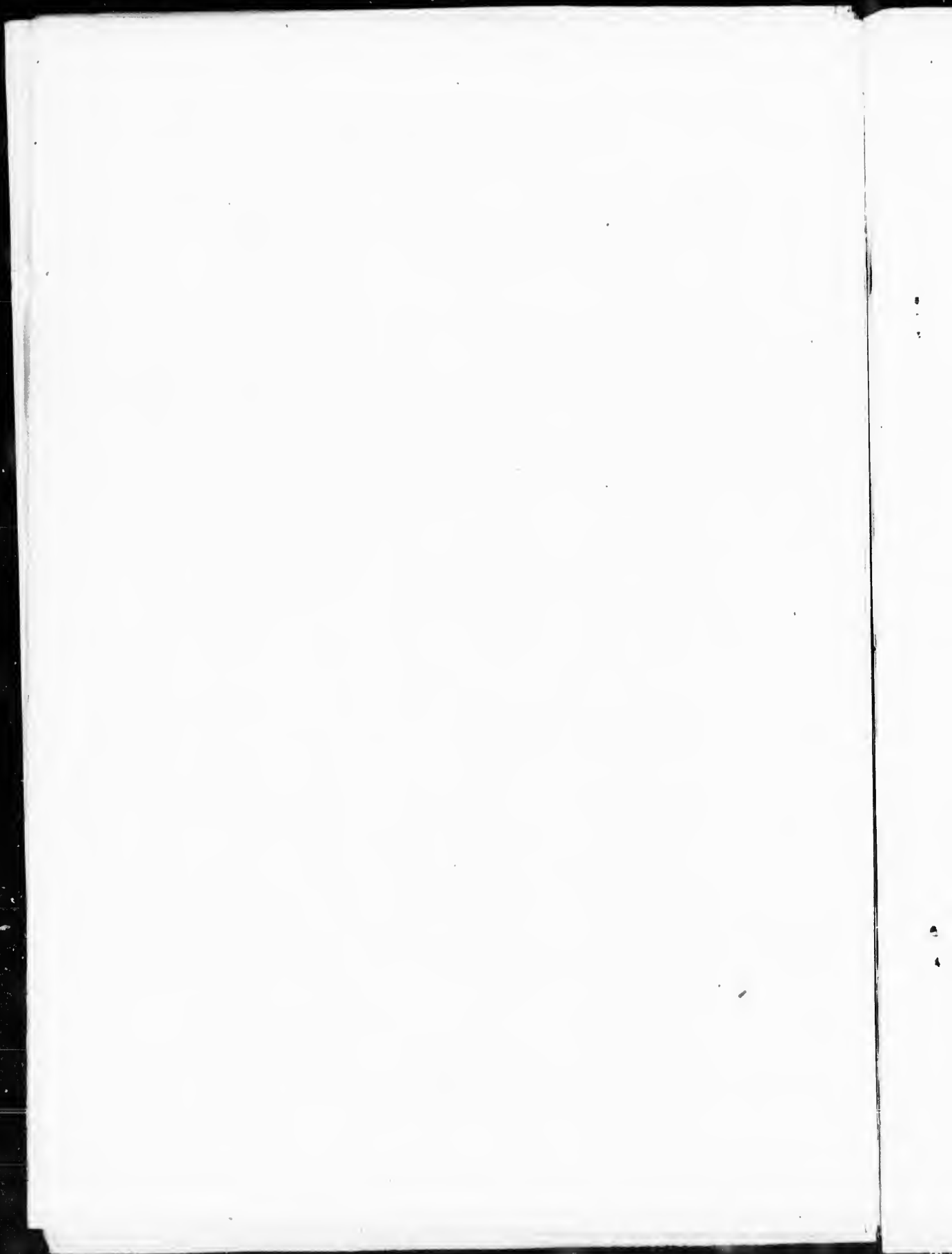


POLLING SUB-DIVISION NO. 4.

12

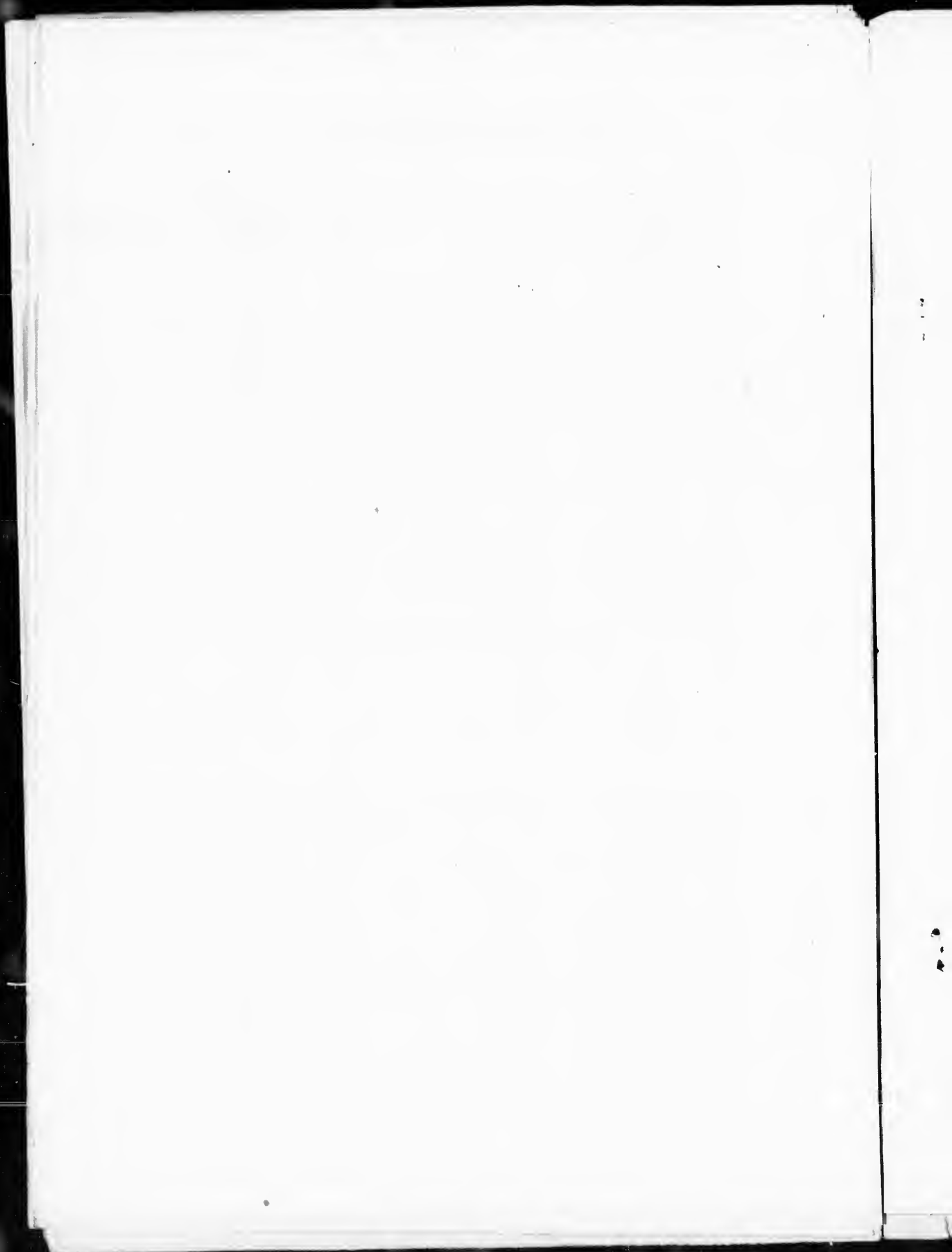
Comprising concessions 11, 12, 13 and 14.

No. on Roll	Juror	NAME.	LOT.	Con. or Street.	Owner or Tenant.	P. O Address
464		Anderson Hugh	n w cor 19	11	O M F	1
550	J	Anderson Archibald	n h 19 and pt s h	13	O M F	1
551	J	Anderson Archibald Jr	n h 19 and pt s h	13	O M F	1
563	J	Addison Robert	s h 24	13	O M F	1
564		Addison Wm	s h 24	13	F S M F	1
603	J	Archer John	n w 1/2 21 etc	14	O M F	9
560	J	Archer David	n h 21	13	O M F	9
717		Asquith George	40 pt 41 St Helens	11	O M F	1
467		Adams Charles	pt 21 St Helens	13	O M F	1
552	J	Anderson George	pt 19	13	O M F	1
489	J	Barbour Wm	e h 13	12	O M F	2
604		Burns John	n e 1/2 21	14	O M F	9
427		Barbour Wm	n h 21 etc. see sub-div	3.12	O M F	10
428	J	Barbour James	n h 21 etc. see sub-div	3.12	O M F	1
429	J	Barbour W R	n h 21 etc. see sub-div	3.12	O M F	1
450		Campbell Peter	n h 15 s h 15 con 12	11	O M F	3
451		Campbell Neil	n h 15 s h 15 con 12	11	F S M F	3
446	J	Campbell John	w h 14	11	O M F	3
469	J	Coulter John	e h 21	11	O M F	1
470	J	Coulter Wm	e h 21	11	O M F	1
526	J	Calaghan Patrick	s 3/4 27 etc	12	O M F	9
529		Calaghan Daniel	s 3/4 27 etc	12	F S M F	9
527		Calaghan George	s 3/4 27 etc	12	F S M F	9
528		Calaghan Wm	1/2 27 etc	12	F S M F	9
539		Carrol Dennis	e h 15 n p 16 con 12	13	O M F	2
540	J	Carril Edward	e h 15 n p 16 con 12	13	O M F	2
541	J	Cameron Alex K	s h 16 e h 22 con 14	13	O M F	2
542		Cameron Kenneth	s h 16 e h 22 con 14	13	F S M F	2
557		Campbell James	s h 21	13	O M F	1
524	J	Campbell Walter J	s h 25	13	F M F	1
601	J	Cameron Alex	e h 20	14	O M F	2
493	J	Cameron Alex D	n h 15	12	O M F	1
709	J	Clark Peter	8 15 etc St Helens	12	O M F	1
511		Coulter Samuel	s h 21	12	T M F	1
543		Cameron Angus	s h 16 e h 22 con 14	13	F S M F	2
558		Cameron Wm R	s h 21	13	F S M F	1
726		Carran Robert	pt 19	11	O M F	1
452		Campbell Alex	e h 15	12	F S M F	3
559		Campbell Joseph A	s h 21	13	F S M F	1
602		Cameron Roderick	e h 20	14	F S M F	2
452		Campbell Alexander	n h 15	11	F S M F	3
544		Cameron John	s h 16	13	F S M F	3
624		Carrick James	n e pt 27	14	T M F	9
517	J	Donnelly Wm	w h 23	12	O M F	1
520	J	Donnelly James	s h 24	12	O M F	1
713		Doyle Patrick	6 24 etc St Helens	11	O M F	1
719		Durnin Charles E	37 St Helens	11	O M F	1
720		Durnin Alex	26 27 28 St Helens	11	T M F	1
721		Durnin Saml	26 27 28 36 St Helens	11	F M F	1
454		Ellis Robert	n h 16	11	O M F	2
523	J	Emerson Alex	n h 25 n 1/2 27	12	O & T M F	2
522		Emerson James	n h 25 n 1/2 27	12	O & T M F	1
578	J	Ellis Wm Sr	pt s h 13	14	O M F	2
579	J	Ellis Wm Jr	pt s h 13	14	T H M F	2
471		Ferrier Wm W	w 1/2 22	11	O M F	1
472	J	Ferrier Johnathan	w 1/2 22	11	O M F	1
475	J	Ferrier John W	pt 23 s h 24	11	O M F	1
476	J	Ferrier David	pt 23 s h 24	11	O M F	1
606	J	Foster Joseph	s h 21 w h 22	14	O M F	9
711		Ferguson James	4 St Helens	11	O M F	1
474	J	Farrer Wm C	w h 24 pt 23	11	O M F	1
607		Foster Saml	s 1/2 21 w h 22	14	F S M F	9



POLLING SUB-DIVISION NO. 4.

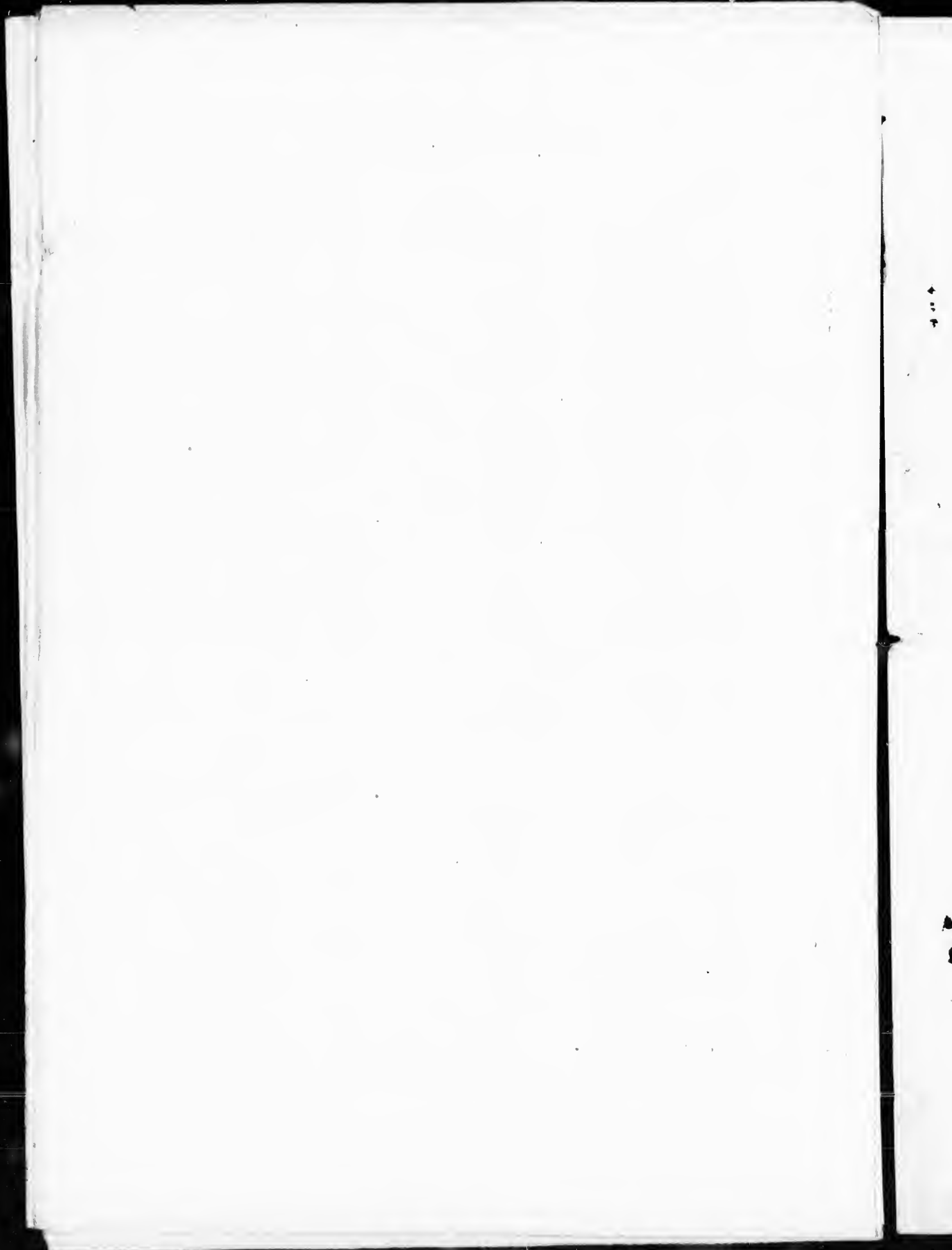
No. on Roll	Juror	NAME.	LOT.	Con. or Str et.	Owner or Tenant.	P. O Address
460	J	Gordon John	n 3 19	11	O M F	1
461		Gordon Wm	n 3 19	11	F S M F	1
462		Gordon Adam	n 3 19	11	F S M F	1
496	J	Gaunt Edwin	n h 17 s h 18	12	O M F	1
497		Gaunt Joseph	n h 17 s h 18	12	F S M F	1
498		Gaunt James	n h 17 h 18	12	F S M F	1
463		Gordon John A	n 3 19	11	F S M F	1
713	J	Gaunt John	10 11 and pt s h 18 St Helens etc		O M F	1
499	J	Gaunt James R	s h 17	12	T M F	1
538	J	Gaynor Cornelius	w h 15	13	O M F	2
585	J	Greer George	15	14	O M F	2
609	J	Gillis John	n e 1 23	14	O M F	9
586		Greer George A	15	14	F S M F	2
590	J	Golden Alex	e h 17	14	O M F	2
610		Gillis David	n e 1 23	14	O M F	9
623		Gaunt James	n e pt 27	14	O M F	9
465	J	Huaphney Wm	w h 20	11	O M F	1
466	J	Haines Edward	e h 20 etc	11	O M F	1
576		Hedley Nicholas	pt s h 13	14	O M F	2
533		H lmes Wm S	n 1 13	13	O M F	2
577		Hedley Alex	pt s h 13	14	O M F	2
567	J	Inglis John	25	13	O M F	9
568		Inglis Robert	25	13	F S M F	9
724	J	Joyant Wm T	33 St Helens		T M F	1
519	J	Jarvis Edwin	n h 24	12	O M F	1
530	J	Jury Francis	s q 13	13	O M F	2
723		James John	31 13 14 St Helens		O M F	1
468	J	Joyant John	pt 21 etc		O M F	1
473	J	Joyant Andrew	pt e h 22	11	O M F	1
611		Kennedy David	n pt 24	14	T M F	9
716		Lott Thomas	pt 18	11	T M F	1
525	J	Laver Thomas	n h 26	12	O M F	9
509		Laidlaw James	26	13	T M F	9
571	J	Laidlaw Joseph	26	13	T M F	9
570		Laidlaw James Sr	26	13	O M F	9
572		Laidlaw John	26	13	F S M F	9
582		Lyons James	s 4 w h	14	T M F	3
442		Mullin Torrance	s w 1 13	11	F S M F	3
441		Mullin James	s h w h 13	11	O M F	3
487	J	Martin James	e h 27	11	O M F	9
502	J	Miller John	n h 19	12	O M F	1
546	J	Miller Wm	w h 17	13	O M F	1
548	J	Miller Thomas	e h 17	13	O M F	1
619	J	Mowbray James	w h 27	14	O M F	9
620	J	Mowbray George	w h 27	14	F M F	9
725	J	Murray Robert	19 St Helens		O M F	1
444		McBride James	n w cor 13	11	O M F	11
447	J	McCrosbie Hugh	e h 14	11	O M F	3
448		McCrosbie John	s h 15	11	O M F	3
505		McPherson Duncan	20	12	O M F	1
506		McPherson John	20	12	F S M F	1
514		McPherson Hugh	s h 22	12	O M F	1
515	J	McPherson John	s h 22	12	O M F	1
513	J	McKenzie Donald	n h 22	12	O M F	1
547		Miller James	w h 17	13	O M F	1
581	J	McCarroll Robert	s w 1 14	14	O M F	2
584	J	McMillan Dougal	pt e h 14	14	O M F	2
587	J	McDonald Malcolm	16	14	O M F	2
588		McDonald Wm	16	14	T M F	2
589		McDonald Frederick	16	14	T M F	2
545	J	McDonald John	n h 16	13	O M F	1
596	J	McQuillan Wm J	pt 17 pt 19	14	O M F	1



POLLING SUB-DIVISION NO. 4.

14

No. on Roll	Juror.	NAME	LOT.	Con. or Street.	Owner or Tenant.	P. O Address
598	J	McQuillan Edward	pt 17 pt 19 pt 20	14	O M F	1
599		McQuillan Wm	pt 17 pt 19 pt 20	14	F S M F	1
712		Martin Wright	6 24 25 pt 18 St Helens		T M F	1
507		McPherson Ebenezer	20	12	F S M F	1
722		McDonald George	29 St Helens		O M F	1
482		McQuillan John	5 20	11	O M F	2
597		McQuillan Richard	pt 17 pt 18	14	F S M F	2
714		McGuire John	7 St Helens		O M F	1
573		McLean E S	pt 13	14	O M F	1
449		McCrostie Wm	s h 15	11	F S M F	3
513		McKenzie Duncan	n h 22	12	F S M F	1
600		McQuillan Edw Jr	e h 19 w h 20	14	F S M F	3
605		Mathers Henry	pt n w 1/4 21	14	T M F	3
495	J	O'Laughlin Bernard	s pt 16	12	O M F	2
518	J	Purdon Robert	e h 23	12	O M F	1
565	J	Patterson David	n h 24 etc	13	O M F	9
566		Patterson Wm H	n h 24 etc	13	F S M F	9
593	J	Purvis Alex	s h 18	14	O M F	1
594		Purvis James	s h 18	14	F S M F	1
718		Phillips Thomas	pt 35 39 St Helens		O M F	1
608	J	Patterson James	w h 23	13	O M F	1
500		Phillips Samuel	s h 17	12	T M F	1
595		Purvis Roderick	s h 18	14	F S M F	2
453	J	Rodgers Edwin	s h 16	11	T M F	1
455	J	Rutherford John B	s h 17	11	O M F	1
456	J	Rutherford John Sr	n h 17	11	O M F	1
485	J	Rintoul John	w h 27	11	O M F	1
486	J	Rintoul Charles	w h 27	11	T M F	1
621	J	Rintoul Henry	pt 27	14	O M F	9
623		Rintoul Charles	s p 27	14	F S M F	9
488	J	Stothers Thomas	w h 13	12	O M F	1
490		Smith James	w h 14	12	O M F	2
492		Smith Peter	w h 14	12	O M F	2
591		Sheriff John	n h 19	14	O M F	2
592		Sheriff John Jr	n h 19	14	F S M F	2
612		Stewart Angus	n e 1/4 s h 24	14	O M F	9
728		Somerville James	n h 1 2 etc St Helens		O M F	2
491		Smith John	w h 14	12	F S M F	2
443	J	Thompson James	pt 13	11	O M F	3
457	J	Todd Thomas	pt s h 18 etc	11	O M F	1
459	J	Todd David	pt s 1/4 18 etc	11	O M F	1
477	J	Taylor John H	e h 24 n h 23	11	O M F	1
478		Taylor Charles W	e h 24 n h 23	11	F S M F	1
480	J	Taylor Thomas	s h 25	11	O M F	1
501	J	Thom Wm	n e 1/4 18	12	O M F	1
615	J	Thom Wm Jr	w h 26	14	O M F	1
614	J	Thom John	25 pt 24	14	O M F	1
562		Thom Charles	pt s h 23	13	T M F	1
479		Taylor Wm A	e h 24 n h 23	11	F S M F	1
586	J	Travers Elliott	pt s h 13	14	O M F	2
616		Thompson Robert Sr	e h 26	14	O M F	9
617	J	Thompson Robert	e h 26	14	O M F	9
614	J	Thom James	pt 24 25	12	O M F	1
617		Thompson Samuel	e h 26	14	F S M F	9
484		Wellwood Robert G	26 s h 26 con 12	11	F S M F	1
483	J	Wellwood Wm	26 s h 26 con 12	11	O M F	1
422	J	Wood Alex	n h 14 etc see sub-div 3	12	O M F	1
426	J	Wood Robert	e h 14 etc see sub-div 3	12	O M F	1
727	J	Weatherhead George	s h 43 B 1 St Helens	12	O M F	1
504		Weatherhead Wm E	s h 19	12	F S M F	1



POLLING SUB-DIVISION NO. 4.

No. on Roll.	Juror.	NAME.	LOT.	Con. or Street.	Owner or Tenant.	P. O Address
532	J	Webster Thomas	s h n h 13	13	O M F	2
534	J	Webster Walter A	w h 14	13	O M F	2
535	J	Wilson Augustus	w h 14	13	O M F	2
536		Wilson Wm Sr	e h 14	13	O M F	2
537		Wilson Wm F	e h 14	13	F S M F	2
554		Webb John	20	13	O M F	1
553	J	Webb Wm C.	s h e h 19	13	O M F	1
555		Webb Walter	20	13	F S M F	1
556		Webb George	20	13	F S M F	1
561	J	Webb Wm	w h 22	13	O M F	1
574		Wilson Wm	pt s h 13	14	O M F	2
521		Walls Edmund	s h 24	12	T M F	1
575		Wilson James	pt s h 13	14	T M F	2
503	J	Weatherhead John B	s h 19	12	O M F	1

PART II—Persons entitled to vote at Municipal Elections only.

516		Donnelly Mrs	w h 23	12	O	1
531		McLean Mrs	pt 13 etc	13	O	2
709		McDonald Mrs	A s h and 1 St H		O	1
494		O'Laughlin Mrs	s h 16	12	C	2
445		Thompson Mrs	pt 13	11	O	3
509		Wilson Mrs	s h 21	12	O	1
549		Orr Mrs	pt e h 18	13	O	1
583		McMillan Mrs		14	O	3

PART III—Persons entitled to vote at Elections to the Legislative Assembly only.

510		Acheson Wm	s h 21	12	M F	1
481		Taylor Souter	pt 26	11	M F	1
459		Walsh Andrew	pt 18 etc	11	M F	1
508		McPherson Donald	20	12	M F	1
625		Carrick Robert	n e pt 27	14	M F	9
626		Carrick Andrew	n e pt 27	14	M F	9

Aggregate number of persons on this list qualified to act as jurors, 249.

