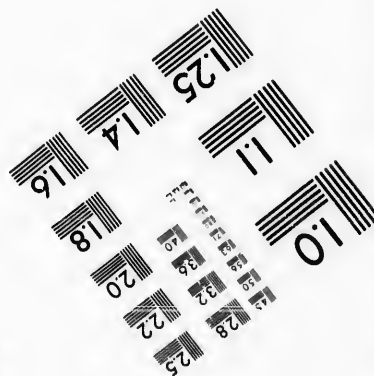
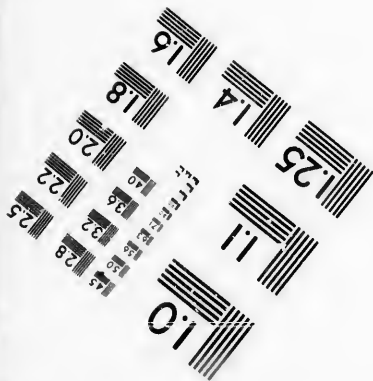
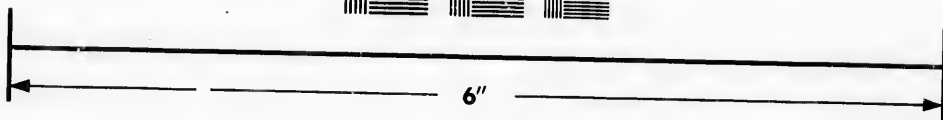
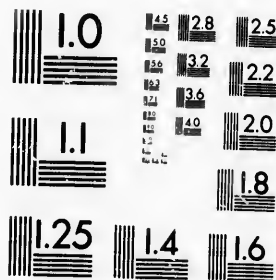


**IMAGE EVALUATION
TEST TARGET (MT-3)**



**Photographic
Sciences
Corporation**

23 WEST MAIN STREET
WEBSTER, N.Y. 14580
(716) 872-4503

**CIHM/ICMH
Microfiche
Series.**

**CIHM/ICMH
Collection de
microfiches.**



Canadian Institute for Historical Microreproductions / Institut canadien de microreproductions historiques

© 1986

Technical and Bibliographic Notes/Notes techniques et bibliographiques

The Institute has attempted to obtain the best original copy available for filming. Features of this copy which may be bibliographically unique, which may alter any of the images in the reproduction, or which may significantly change the usual method of filming, are checked below.

L'Institut a microfilmé le meilleur exemplaire qu'il lui a été possible de se procurer. Les détails de cet exemplaire qui sont peut-être uniques du point de vue bibliographique, qui peuvent modifier une image reproduite, ou qui peuvent exiger une modification dans la méthode normale de filmage sont indiqués ci-dessous.

- | | |
|--|--|
| <input checked="" type="checkbox"/> Coloured covers/ Couverture de couleur | <input type="checkbox"/> Coloured pages/ Pages de couleur |
| <input type="checkbox"/> Covers damaged/ Couverture endommagée | <input type="checkbox"/> Pages damaged/ Pages endommagées |
| <input type="checkbox"/> Covers restored and/or laminated/ Couverture restaurée et/ou pelliculée | <input type="checkbox"/> Pages restored and/or laminated/ Pages restaurées et/ou pelliculées |
| <input type="checkbox"/> Cover title missing/ Le titre de couverture manque | <input checked="" type="checkbox"/> Pages discoloured, stained or foxed/ Pages décolorées, tachetées ou piquées |
| <input type="checkbox"/> Coloured maps/ Cartes géographiques en couleur | <input type="checkbox"/> Pages detached/ Pages détachées |
| <input type="checkbox"/> Coloured ink (i.e. other than blue or black)/ Encre de couleur (i.e. autre que bleue ou noire) | <input checked="" type="checkbox"/> Showthrough/ Transparence |
| <input type="checkbox"/> Coloured plates and/or illustrations/ Planches et/ou illustrations en couleur | <input type="checkbox"/> Quality of print varies/ Qualité inégale de l'impression |
| <input type="checkbox"/> Bound with other material/ Relié avec d'autres documents | <input type="checkbox"/> Includes supplementary material/ Comprend du matériel supplémentaire |
| <input type="checkbox"/> Tight binding may cause shadows or distortion along interior margin/ La reliure serrée peut causer de l'ombre ou de la distorsion le long de la marge intérieure | <input type="checkbox"/> Only edition available/ Seule édition disponible |
| <input type="checkbox"/> Blank leaves added during restoration may appear within the text. Whenever possible, these have been omitted from filming/ Il se peut que certaines pages blanches ajoutées lors d'une restauration apparaissent dans le texte, mais, lorsque cela était possible, ces pages n'ont pas été filmées. | <input type="checkbox"/> Pages wholly or partially obscured by errata slips, tissues, etc., have been refilmed to ensure the best possible image/ Les pages totalement ou partiellement obscurcies par un feuillet d'errata, une pelure, etc., ont été filmées à nouveau de façon à obtenir la meilleure image possible. |
| <input type="checkbox"/> Additional comments: Commentaires supplémentaires: | |

This item is filmed at the reduction ratio checked below/
Ce document est filmé au taux de réduction indiqué ci-dessous.

| | | | | | | | | | | | |
|-----|-----|-----|-----|-----|-----|-----|-----|-----|-----|-----|-----|
| 10X | 12X | 14X | 16X | 18X | 20X | 22X | 24X | 26X | 28X | 30X | 32X |
| | | | | | ✓ | | | | | | |

The copy filmed here has been reproduced thanks to the generosity of:

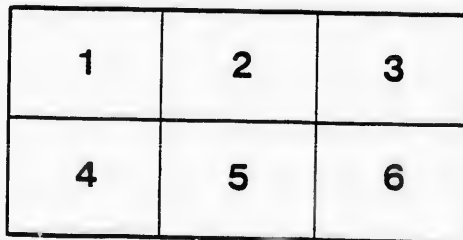
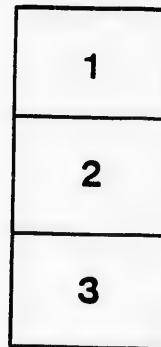
Législature du Québec
Québec

The images appearing here are the best quality possible considering the condition and legibility of the original copy and in keeping with the filming contract specifications.

Original copies in printed paper covers are filmed beginning with the front cover and ending on the last page with a printed or illustrated impression, or the back cover when appropriate. All other original copies are filmed beginning on the first page with a printed or illustrated impression, and ending on the last page with a printed or illustrated impression.

The last recorded frame on each microfiche shall contain the symbol \rightarrow (meaning "CONTINUED"), or the symbol ∇ (meaning "END"), whichever applies.

Maps, plates, charts, etc., may be filmed at different reduction ratios. Those too large to be entirely included in one exposure are filmed beginning in the upper left hand corner, left to right and top to bottom, as many frames as required. The following diagrams illustrate the method:



L'exemplaire filmé fut reproduit grâce à la générosité de:

Législature du Québec
Québec

Les images suivantes ont été reproduites avec le plus grand soin, compte tenu de la condition et de la netteté de l'exemplaire filmé, et en conformité avec les conditions du contrat de filmage.

Les exemplaires originaux dont la couverture en papier est imprimée sont filmés en commençant par le premier plat et en terminant soit par la dernière page qui comporte une empreinte d'impression ou d'illustration, soit par le second plat, selon le cas. Tous les autres exemplaires originaux sont filmés en commençant par la première page qui comporte une empreinte d'impression ou d'illustration et en terminant par la dernière page qui comporte une telle empreinte.

Un des symboles suivants apparaîtra sur la dernière image de chaque microfiche, selon le cas: le symbole \rightarrow signifie "A SUIVRE", le symbole ∇ signifie "FIN".

Les cartes, planches, tableaux, etc., peuvent être filmés à des taux de réduction différents. Lorsque le document est trop grand pour être reproduit en un seul cliché, il est filmé à partir de l'angle supérieur gauche, de gauche à droite, et de haut en bas, en prenant le nombre d'images nécessaire. Les diagrammes suivants illustrent la méthode.

re
détails
es du
modifier
er une
filmage

es

rrata
to

pelure,
n à

32X

Prize List.



Quebec Poultry

And. _____

Pet Stock...

Association.

EXHIBITION.

March 1, 2, 3,
1899.

JACQUES CARTIER HALL

QUEBEC
DAILY TELEGRAPH PRINT

1899.

FRUIT

Ginger Ale,
Soda Water,
Coke,
Cream Soda &c.

IS THE BEST MONEY CAN BUY.



Medals, First Prizes and Diplomas Awarded
for Superior Quality.

QUINCY



ru
in
th
th
r
n



Read This.

Entries close on Saturday, the 25th February. Exhibition opens Wednesday morning, the 1st March, and closes Friday night, the 3rd March. All specimens must be in the Hall by Tuesday night, the 28th February, and may be removed Saturday morning, the 4th March.



the
ion

Intending Exhibitors to this
Show may have their . .
Poultry Carefully . . .
Handled by . . .

O'DONNELL'S City Express...

AND

Baggage Transfer

Outside Exhibitors may drop Postal and their
orders will be attended to promptly.

OFFICE: 26 ANGELE St.,
PHONE 989. QUEBEC.

TELEPHONE 906.

Quebec

News Co.,

31 BUADE STREET,
..QUEBEC.

Circulating Library, Books,
Stationery, Views, Newspapers,
Periodicals, Etc., Etc.

COLVIN & Co.

GRAIN & FEED STORE

Always on Hand ———— ↵

GOOD HAY..
AND GRAIN

— OF ANY KIND. —

213 ST. JOHN STREET,
//// QUEBEC. ////

JAMES :: PERRY

MANUFACTURER ↵

Parlor and Bedroom Suites,
Dining room & Hall Furniture,
BEDDING, ETC.

● ———— ●
WAREROOM :

323 St. Paul Street ↵

FACTORY :

↵ 68 St Valier Street,

TEL 519.

QUEBEC.

Prompt attention given to all correspondence.

BASSE-COUR FORTIER,

SAINTE-THERESE, P. Q.

Victor Fortier, Prop.

Importateur et Eleveur de

VOLAILLES DE QUALITE SUPERIEURE

COMPRENANT TOUTES LES VARIÉTÉS DE

Polonais, Bantams,

Sumatras noirs, Leghorns noirs,

Spanish, Hamburgs noirs et argentes.

Volailles a Vendre en tout temps et Oufs durant la Saison.

Satisfaction Garantie.

A. QUILBAULT,
PROPRIÉTAIRE.

GEO. VAN FELSON,
MANAGER.

V. & B.

..Sporting Goods Store..

//// IMPORTERS ////


Bicycles, Sporting Goods,

— Fishing Tackle, Etc.,

11 ST. JOHN ST., - QUEBEC.

JOSEPH BUSSIERE

WHOLESALE AND RETAIL

 GROCERIES
Wines &
LIQUORS.

Cor. Sutherland & d'Aiguillon Sts.

QUEBEC.

Telephone 289.

TELEPHONE 681.

. PAUL PARENT..

TINSMITH AND

Metal Roofer Galvanized Iron Roofing

A SPECIALTY.

Gas Fitter, Hot Air, Steam and Hot
Water Heating. Contractor.

— CORNER —

ST. JOHN and RACINE St. and D'AIGUILLON St.,

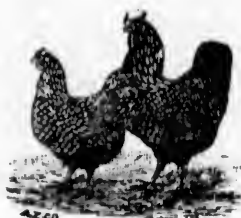
QUEBEC.

*Most Modern Sanitary Plumbing Apparatus
Electric and Acetylene Gas Fitting
and Supplies.*

Your Patronage is Solicited. MY RATES ARE MODERATE.

RE
ES
&
S.
Sts.
b.
T..
fing
Tot
St.,
tus
ATE.

Prize List.



Quebec Poultry

And.

Pet Stock...

Association.

EXHIBITION.

1899.



QUEBEC
DAILY TELEGRAPH PRINT

1899.

OFFICERS
OF THE
THE QUEBEC POULTRY
AND
PET STOCK ASSOCIATION

1899.



PATRON

THE LIEUTENANT-GOVERNOR.

HONORARY PRESIDENT

HONORABLE F. W. ANDREWS.

HONORARY VICE-PRESIDENTS.

HIS WORSHIP THE MAYOR OF QUEBEC.

VICTOR CHATEAUVERT.



PRESIDENT.

WM. LEE.

VICE-PRESIDENTS

T. A. POSTON, C. E. LEVEY.

SECRETARY-TREASURER

R. CAMPBELL.

COMMITTEE

A. SINCLAIR,

JAMES GEGGIE,

W. CRAWFORD,

T. GALE,

C. J. KNIGHT.

RULES AND REGULATIONS.

The Premiums of the Exhibition are Open to the Competition of the World, Under the Following Rules :

- 1.—An exhibitor violating any of these rules shall forfeit all privileges and premiums.
- 2.—The committee reserve the right to reject any entry.
- 3.—All specimens must be entered in the name of the actual owner. Any attempt to evade this rule, as in borrowing birds or buying with the understanding that the birds shall be returned after the exhibition or upon any other conditions will exclude all entries of the offending party and all premiums shall be withheld. Exhibitors shall, if deemed necessary, make a statutory declaration that the specimens exhibited by them are in accordance with this rule. In case any exhibitor refuses to make such declaration on being requested, all premiums awarded him shall be withheld.
- 4.—All specimens shall be at the owner's risk ; it will not be necessary for exhibitors to accompany their birds, but direct them to the hall where the Superintendent will receive them and properly care for them and at the close of the Exhibition will promptly deliver them to the exhibitor or to his order. All coops must have name painted on for return journey. The association will use every effort for care and safety of the birds.

5.—All specimens shall be exhibited in their natural condition. Games and game Bantams being an exception so far as to render ordinary dubbing and trimming admissible. Pulling false feathers and similar practices are prohibited. All birds must be marked or banded.

6. No specimens shall be allowed in the hall except those that the entry fee has been paid for.

7. No person shall be allowed to handle any of the birds or take them out of their coops without the consent of their owners except the judge and superintendent.

8.—The American Standard of perfection as last revised shall be the guide of the judge on all varieties mentioned therein.

9.—During the exhibition all specimens are under the control of the association.

10.—No person shall be allowed to interfere with the judges by letter or otherwise or give them any information as to the identity of any specimens.

11.—The only appeal from the decision of the judges shall be to the Committee of Management and shall be in writing and delivered to the president or secretary within 24 hours of cause of such action and must state plainly the cause of complaint or appeal.

12.—All entries must be made according to the prize list.

Entrance fees shall be as follows :

To members of the association, twenty entries free and over that number 10 cents.

To all others Single Birds, 25c. each entry.

Breeding pen..... 50c.

Pigeons or any other class 15c.

13.—The birds in breeding pens may compete for all regular prizes by paying the entrance fee for single birds in addition to fee for breeding pen.

14.—All fees must accompany the entry which ought to be made on the blanks furnished by the secretary.

15.—Food will be provided for the specimens during the exhibition by the association, who also furnish coops for fowls and pigeons.



PRIZE LIST

1st Prize, 75 cts.

2nd Prize, 50 cts.

SECTION.

- 1 Brahmas, dark, cock.
- 2 " " hen.
- 3 " " cockerel.
- 4 " " pullet.
- 5 Brahmas, light, cock.
- 6 " " hen.
- 7 " " cockerel.
- 8 " " pullet.
- 9 Cochins, buff, cock.
- 10 " " hen.
- 11 " " cockerel.
- 12 " " pullet.
- 13 Cochins, partridge, cock.
- 14 " " hen.
- 15 " " cockerel.
- 16 " " pullet.
- 17 Cochins, white, cock.
- 18 " " hen.
- 19 " " cockerel.
- 20 " " pullet.
- 21 Cochins, black, cock.
- 22 " " hen.
- 23 " " cockerel.
- 24 " " pullet.
- 25 Langshans, cock.
- 26 " hen.
- 27 " cockerel.
- 28 " pullet.
- 29 Dorkings, coloured, cock.
- 30 " " hen.
- 31 " " cockerel.
- 32 " " pullet.

SECTION.

| | | |
|----|---------------------------|-----------|
| 33 | Dorkings, silver grey, | cock. |
| 34 | " " " | hen. |
| 35 | " " " | cockerel. |
| 36 | " " " | pullet. |
| 37 | Dorkings, white, | cock. |
| 38 | " " " | hen. |
| 39 | " " " | cockerel. |
| 40 | " " " | pullet. |
| 41 | Houdans, | cock. |
| 42 | " " | hen. |
| 43 | " " | cockerel. |
| 44 | " " | pullet. |
| 45 | Lafleches, | cock. |
| 46 | " " | hen. |
| 47 | " " | cockerel. |
| 48 | " " | pullet. |
| 49 | Crève-cœurs, | cock. |
| 50 | " " | hen. |
| 51 | " " | cockerel. |
| 52 | " " | pullet. |
| 53 | Wyandottes, white, | cock. |
| 54 | " " " | hen. |
| 55 | " " " | cockerel. |
| 56 | " " " | pullet. |
| 57 | Wyandottes, golden laced, | cock. |
| 58 | " " " | hen. |
| 59 | " " " | cockerel. |
| 60 | " " " | pullet. |
| 61 | Wyandottes, silver laced, | cock. |
| 62 | " " " | hen. |
| 63 | " " " | cockerel. |
| 64 | " " " | pullet. |
| 65 | Plymouth Rocks, barred, | cock. |
| 66 | " " " | hen. |
| 67 | " " " | cockerel. |
| 68 | " " " | pullet. |
| 69 | Plymouth Rocks, buff, | cock. |
| 70 | " " " | hen. |
| 71 | " " " | cockerel. |
| 72 | " " " | pullet. |
| 73 | Plymouth Rocks, white, | cock. |
| 74 | " " " | hen. |

SECTION.

| | | |
|-----|-------------------------|-----------|
| 75 | Plymouth Rocks, white, | cockerel. |
| 76 | " " " | pullet. |
| 77 | Dominiques, | cock. |
| 78 | " | hen. |
| 79 | " | cockerel. |
| 80 | " | pullet. |
| 81 | Games, black red, | cock. |
| 82 | " " | hen. |
| 83 | " " | cockerel. |
| 84 | " " | pullet. |
| 85 | Games, brown red, | cock. |
| 86 | " " | hen. |
| 87 | " " | cockerel. |
| 88 | " " | pullet. |
| 89 | Games, duckwing, | cock. |
| 90 | " " | hen. |
| 91 | " " | cockerel. |
| 92 | " " | pullet. |
| 93 | Games, pile, | cock. |
| 94 | " " | hen. |
| 95 | " " | cockerel. |
| 96 | " " | pullet. |
| 97 | Games, Indian Cornish, | cock. |
| 98 | " " | hen. |
| 99 | " " | cockerel. |
| 100 | " " | pullet. |
| 101 | Games, Indian White, | cock. |
| 102 | " " | hen. |
| 103 | " " | cockerel. |
| 104 | " " | pullet. |
| 105 | Games, B. B. red Malay, | cock. |
| 106 | " " | hen. |
| 107 | " " | cockerel. |
| 108 | " " | pullet. |
| 109 | Games, black Sumatras, | cock. |
| 110 | " " | hen. |
| 111 | " " | cockerel. |
| 112 | " " | pullet. |
| 113 | Orpington, | cock. |
| 114 | " | hen. |
| 115 | " | cockerel. |
| 116 | " | pullet. |

SECTION.

| | | |
|-----|-----------------------------|-----------|
| 117 | Hamburgs, black, | cock. |
| 118 | " | hen |
| 119 | " | cockerel. |
| 120 | " | pullet. |
| 121 | Hamburgs, golden pencilled, | cock. |
| 122 | " | hen. |
| 123 | " | cockerel. |
| 124 | " | pullet. |
| 125 | Hamburgs, silver pencilled, | cock. |
| 126 | " | hen. |
| 127 | " | cockerel. |
| 128 | " | pullet. |
| 129 | Hamburgs, golden spangled, | cock |
| 130 | " | hen.. |
| 131 | " | cockerel. |
| 132 | " | pullet. |
| 133 | Hamburgs, silver spangled, | cock. |
| 134 | " | hen. |
| 135 | " | cockerel. |
| 136 | " | pullet. |
| 137 | Red Caps, | cock. |
| 138 | " | hen. |
| 139 | " | cockerel. |
| 140 | " | pullet. |
| 141 | Javas, black, | cock. |
| 142 | " | hen. |
| 143 | " | cockerel. |
| 144 | " | pullet. |
| 145 | Leghorns, white, | cock. |
| 146 | " | hen. |
| 147 | " | cockerel. |
| 149 | " | pullet. |
| 150 | Leghorns, brown, | cock. |
| 151 | " | hen. |
| 152 | " | cockerel. |
| 153 | " | pullet. |
| 154 | Leghorns, buff, | cock. |
| 155 | " | hen. |
| 156 | " | cockerel. |
| 157 | " | pullet. |
| 158 | Leghorns, rose comb, brown, | cock. |
| 159 | " | hen. |

SECTION.

| | | |
|-----|-------------------------------|-----------|
| 160 | Leghorns, rose comb, brown, | cockerel. |
| 161 | “ “ “ | pullet. |
| 162 | Leghorns, rose comb, white, | cock. |
| 163 | “ “ “ | hen. |
| 164 | “ “ “ | cockerel. |
| 165 | “ “ “ | pullet. |
| 166 | Leghorns, black, cock. | |
| 167 | “ “ hen. | |
| 168 | “ “ cockerel. | |
| 169 | “ “ pullet. | |
| 170 | Spanish, cock. | |
| 171 | “ hen. | |
| 172 | “ cockerel. | |
| 173 | “ pullet. | |
| 174 | Andalusians, cock. | |
| 175 | “ hen. | |
| 176 | “ cockerel. | |
| 177 | “ pullet. | |
| 178 | Minorcas, black, cock. | |
| 179 | “ “ hen. | |
| 180 | “ “ cockerel. | |
| 181 | “ “ pullet. | |
| 182 | Minorcas, white, cock. | |
| 183 | “ “ hen. | |
| 184 | “ “ cockerel. | |
| 185 | “ “ pullet. | |
| 186 | Polands, white crested black, | cock. |
| 187 | “ “ “ hen. | |
| 188 | “ “ “ cockerel. | |
| 189 | “ “ “ pullet. | |
| 190 | Polands, white, cock. | |
| 191 | “ “ hen. | |
| 192 | “ “ cockerel. | |
| 193 | “ “ pullet. | |
| 194 | Polands, silver, cock. | |
| 195 | “ “ hen. | |
| 196 | “ “ cockerel. | |
| 197 | “ “ pullet. | |
| 198 | Polands, golden, cock. | |
| 199 | “ “ hen. | |
| 200 | “ “ cockerel. | |
| 201 | “ “ pullet. | |

SECTION.

| | |
|-----|----------------------------------|
| 202 | Polands, buff laced, cock. |
| 203 | " " " hen. |
| 204 | " " " cockerel. |
| 205 | " " " pullet. |
| 206 | Game Bantams, black red, cock. |
| 207 | " " " hen. |
| 208 | " " " cockerel. |
| 209 | " " " pullet. |
| 210 | Game Bantams, brown red, cock. |
| 211 | " " " hen. |
| 212 | " " " cockerel. |
| 213 | " " " pullet. |
| 214 | Game Bantams, duck wing, cock. |
| 215 | " " " hen. |
| 216 | " " " cockerel. |
| 217 | " " " pullet. |
| 218 | Game Bantams, pile, cock. |
| 219 | " " " hen. |
| 220 | " " " cockerel. |
| 221 | " " " pullet. |
| 222 | Bantams, rose comb, black, cock. |
| 223 | " " " hen. |
| 224 | " " " cockerel. |
| 225 | " " " pullet. |
| 226 | Bantams, rose comb, white, cock. |
| 227 | " " " hen. |
| 228 | " " " cockerel. |
| 229 | " " " pullet. |
| 230 | Bantams, golden Sebright, cock. |
| 231 | " " " hen. |
| 232 | " " " cockerel. |
| 233 | " " " pullet. |
| 234 | Bantams, silver Sebright, cock. |
| 235 | " " " hen. |
| 236 | " " " cockerel. |
| 237 | " " " pullet. |
| 238 | Bantams, Japanese, cock. |
| 239 | " " " hen. |
| 240 | " " " cockerel. |
| 241 | " " " pullet. |
| 242 | Bantams, Pekin, cock. |
| 243 | " " " hen. |

SECTION.

- 244 Bantams, Pekin, cockerel.
245 " " pullet.
246 Bantams, Polish, cock.
247 " " hen.
248 " " cockerel.
249 " " pullet.
-

- 250 Eggs, 1 doz. white shelled, 1st prize. \$1.00
251 " " " 2nd " 0.50
252 " " " 3rd " 0.25
253 Eggs, 1 doz. brown shelled, 1st prize. \$1.00
254 " " " 2nd " 0.50
255 " " " 3rd " 0.25
-

BREEDING PENS

Consisting of 1 Cock and 3 Hens.

1st Prize, . . . \$ 1.00

2nd Prize, . . . 0.50

- 256 Brahmas.
257 Cochins.
258 Langshans.
259 Dorkings.
260 Plymouth Rocks.
261 Games,
262 Hamburgs,
263 Leghorns.
264 Houdans.
265 Spanish,
266 Polands.
267 Andalusians.
268 Minorcas.
269 Wyandottes.
270 Javas.
271 Bantams.
272 Orpington.

SECTION.

TURKEY.

1st Prize, . . . \$1.00
 2nd Prize, . . . 0.50

273 Turkeys, bronze, cock.
 274 " " hen.
 275 " white, cock.
 276 " " hen.

GEESE.

1st Prize, . . . \$1.00
 2nd Prize, . . . 0.50

277 Geese, Bremen or Embden, male.
 278 " " " female.
 279 " Toulouse, male.
 280 " " female.
 281 " China, male.
 282 " " female.

DUCKS

1st Prize, . . . \$1.00
 2nd Prize, . . . 0.50

283 Ducks, Rouen, male.
 284 " " female.
 285 Ducks, Aylesbury, male.
 286 " " female.
 287 " Gayuga, male.
 288 " " female.
 289 " Pekin, male.
 290 " " female.
 291 Ducks, Wild, male.
 292 " " female.

PIGEONS

1st Prize, . . . 50 Cts.
 2nd Prize, . . . 25 "

293 Pouters, any colour, cock.
 294 " " " hen.

\$1.00
 0.50
 0.25
 \$1.00
 0.50
 0.25

SECTION.

- 295 Carriers, any colour, cock.
 296 " " " hen.
 297 Priests, cock.
 298 " hen.
 299 Magpies, cock.
 300 " hen.
 301 Dragoons, any colour, cock.
 302 " " " hen.
 303 Barbs, any colour, cock.
 304 " " " hen.
 305 Tumblers, shortfaced, any standard
 colour, cock.
 306 Tumblers, shortfaced, any standard
 colour, hen.
 307 Tumblers, longfaced, standard colour,
 cock.
 308 Tumblers, longfaced, standard colour,
 hen.
 309 Fantails, any standard colour, cock.
 310 " " " " hen.
 311 Jacobins, any colour, cock.
 312 " " " hen.
 313 Antwerps, shortfaced, any colour, cock.
 314 " " " " " hen.
 315 Antwerps, any colour, cock.
 316 " " " hen.
 317 Trumpeters, Russian, cock.
 318 " " " hen.
 319 Turbits, any colour, cock.
 320 " " " hen.
 321 Blondinettes, cock.
 322 " hen.
 323 Satinettes, cock.
 324 " hen.
 325 Archangels, cock.
 326 " hen.
 327 Swallows, any colour, cock.
 328 " " " hen.
 329 Nuns, any colour, cock.
 330 " " " hen.
 331 Owls, English, any colour, cock.
 332 " " " " hen.

SECTION.

- 333 Owls, African, any colour, cock.
334 " " " " hen
335 Homers, cock.
336 " hen.

FANCY BIRDS

For best Single Bird, - 50 Cents.

- 337 Guinea fowls.
338 White Pea fowls.
339 Common Pea fowls.
340 White Swan.
341 Black Swan.
342 Canaries, Belgian.
343 " Glasgow.
344 " German.
345 Parrot.
346 Cockatoo.
347 Pheasant, golden, cock.
348 " " hen.

FANCY ANIMALS

For Best Pair, - - 50 Cents.

- 349 Ferrets.
350 Guinea-pigs.
351 Abyssinian guinea-pigs.
352 White rats.
353 White mice.
354 White squirrels.
355 Grey squirrel
356 Red squirrel.
357 Flying squirrel.
358 Rabbit, lop-eared.
359 " angora.
360 " Russian.
361 " common.

DUQUET CUP.

For highest scoring Game Cock in the show.

CONDITIONS.

- 1st. Competition open to all.
- 2nd. To be won three times in five competitions before becoming the property of any competitor.
- 3rd. Cup to remain in possession of the winner each time won, till the date of the next competition.
- 4th. Security to the full value to be given to the Association.

BREAKEY CUP.

For the highest scoring cock and hen in the exhibition both being of same class.

CONDITIONS.

- 1st. Competition open to all.
- 2nd. To be won three times in five competitions before becoming the property of any competitor.
- 3rd. Cup to remain in possession of winner each time won till the date of the next competition.
- 4th. Security to the full value to be given to Association.

PAQUET CUP.

For the highest scoring breeding pen of
Plymouth Rocks.

CONDITIONS.

- 1st. Competition open to any one in the
District of Quebec (judicial district.)
- 2nd. To be won three times in five competi-
tions before becoming the permanent
property of any competitor.
- 3rd. Cup to remain in possession of winner
each time won, till the date of the
next competition.
- 4th. Security to the full value to be given
to the Association.

The Association Perpetual Challenge Medal.

For highest scoring breeding pen in section
145 to 185 inclusive.

CONDITIONS.

- 1st. Competition open to all members.
- 2nd. Medal may remain in possession of
winner each time won till the date
of the next competition.
- 3rd. Security to the full value to be given
to the Association.

SPECIAL PRIZE LIST.

1. For highest scoring game hen.—Box of cigars presented by R. Campbell.
2. For highest scoring pair of bantams owned by a boy under 14 years of age.—Penknife presented by R. Campbell.
3. For highest scoring hen in sections 1 to 28 inclusive.—Prize presented by G. Seifert.
4. For highest scoring Turkey cock.—1 setting of brown Leghorn eggs, presented by R. Campbell.



..M. HOGAN..

MONTOALM MARKET,

TEL. 191.

— QUEBEC.

Foreign and Domestic Fruit

● Early Southern Vegetables. ● All kinds of Fresh Fish in Season. ●



MALPECQUE OYSTERS, LOBSTERS, &c.

— Your Patronage Solicited.

Samuel Bussièrès



Flour,
Grains

And. —————

Provisions

MERCHANT.

WHOLESALE AND RETAIL.

— CORNER —

40, d'Aiguillon and Sutherland Sts

For h
or Ham

1st. C

2nd. T

3rd. C

4th.

“V

R

I

!

BREAKEY CUP.

For highest scoring pair of Wyandottes
or Hamburgs.

CONDITIONS.

- 1st. Competition open to all.
- 2nd. To be won three times in five competi-
tions before becoming the property of
any competitor.
- 3rd. Cup to remain in possession of winner
each time till the date of the next
competition.
- 4th. Security to the full value to be given
to Association.

ERRATA.

For Breakey Cup on page 20, read
"Vallerand" Cup,

Under Paquet Cup read "Barred Plymouth
Rocks" instead of Plymouth Rocks, page 21.

Add the following to the Special Prize
List, page 22 :—

5. For the highest scoring pair of Ducks.—
Prize presented by W. LaRoche & Co.
 6. For the best pair of pigeons at the show.—
Prize presented by P. F. Rinfret.
-



