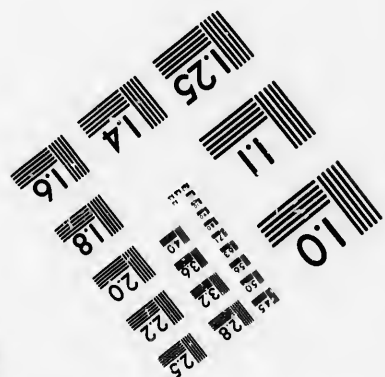
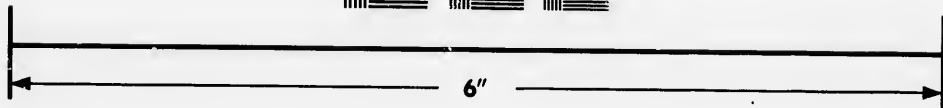
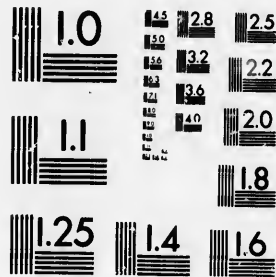


**IMAGE EVALUATION
TEST TARGET (MT-3)**



**Photographic
Sciences
Corporation**

23 WEST MAIN STREET
WEBSTER, N.Y. 14580
(716) 872-4503

**CIHM/ICMH
Microfiche
Series.**

**CIHM/ICMH
Collection de
microfiches.**



Canadian Institute for Historical Microreproductions / Institut canadien de microreproductions historiques

© 1986

Technical and Bibliographic Notes/Notes techniques et bibliographiques

The institute has attempted to obtain the best original copy available for filming. Features of this copy which may be bibliographically unique, which may alter any of the images in the reproduction, or which may significantly change the usual method of filming, are checked below.

L'Institut a microfilmé le meilleur exemplaire qu'il lui a été possible de se procurer. Les détails de cet exemplaire qui sont peut-être uniques du point de vue bibliographique, qui peuvent modifier une image reproduite, ou qui peuvent exiger une modification dans la méthode normale de filmage sont indiqués ci-dessous.

- | | |
|---|---|
| <input type="checkbox"/> Coloured covers/
Couverture de couleur | <input type="checkbox"/> Coloured pages/
Pages de couleur |
| <input type="checkbox"/> Covers damaged/
Couverture endommagée | <input type="checkbox"/> Pages damaged/
Pages endommagées |
| <input type="checkbox"/> Covers restored and/or laminated/
Couverture restaurée et/ou pelliculée | <input type="checkbox"/> Pages restored and/or laminated/
Pages restaurées et/ou pelliculées |
| <input type="checkbox"/> Cover title missing/
Le titre de couverture manquant | <input checked="" type="checkbox"/> Pages discoloured, stained or foxed/
Pages décolorées, tachetées ou piquées |
| <input type="checkbox"/> Coloured maps/
Cartes géographiques en couleur | <input type="checkbox"/> Pages detached/
Pages détachées |
| <input type="checkbox"/> Coloured ink (i.e. other than blue or black)/
Encre de couleur (i.e. autre que bleue ou noire) | <input checked="" type="checkbox"/> Showthrough/
Transparence |
| <input type="checkbox"/> Coloured plates and/or illustrations/
Planches et/ou illustrations en couleur | <input type="checkbox"/> Quality of print varies/
Qualité inégale de l'impression |
| <input type="checkbox"/> Bound with other material/
Relié avec d'autres documents | <input type="checkbox"/> Includes supplementary material/
Comprend du matériel supplémentaire |
| <input type="checkbox"/> Tight binding may cause shadows or distortion along interior margin/
La reliure serrée peut causer de l'ombre ou de la distorsion le long de la marge intérieure | <input type="checkbox"/> Only edition available/
Seule édition disponible |
| <input type="checkbox"/> Blank leaves added during restoration may appear within the text. Whenever possible, these have been omitted from filming/
Il se peut que certaines pages blanches ajoutées lors d'une restauration apparaissent dans le texte, mais, lorsque cela était possible, ces pages n'ont pas été filmées. | <input type="checkbox"/> Pages wholly or partially obscured by errata slips, tissues, etc., have been refilmed to ensure the best possible image/
Les pages totalement ou partiellement obscurcies par un feuillet d'errata, une pelure, etc., ont été filmées à nouveau de façon à obtenir la meilleure image possible. |
- Additional comments: [Printed ephemera] 1 sheet (verso blank)
Commentaires supplémentaires:

This item is filmed at the reduction ratio checked below/
Ce document est filmé au taux de réduction indiqué ci-dessous.

10X	14X	18X	22X	26X	30X
<input type="checkbox"/>	<input type="checkbox"/>	<input type="checkbox"/>	<input type="checkbox"/>	<input checked="" type="checkbox"/>	<input type="checkbox"/>
12X	16X	20X	24X	28X	32X

The copy filmed here has been reproduced thanks to the generosity of:

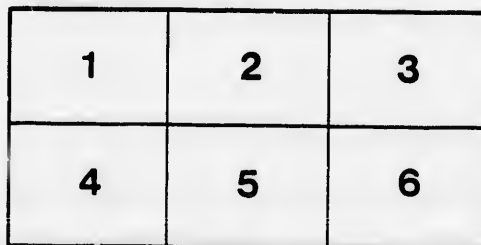
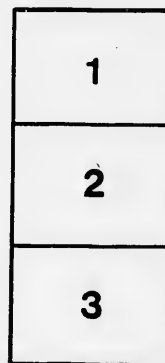
Manuscript Division
Public Archives of Canada

The images appearing here are the best quality possible considering the condition and legibility of the original copy and in keeping with the filming contract specifications.

Original copies in printed paper covers are filmed beginning with the front cover and ending on the last page with a printed or illustrated impression, or the back cover when appropriate. All other original copies are filmed beginning on the first page with a printed or illustrated impression, and ending on the last page with a printed or illustrated impression.

The last recorded frame on each microfiche shall contain the symbol \rightarrow (meaning "CONTINUED"), or the symbol ∇ (meaning "END"), whichever applies.

Maps, plates, charts, etc., may be filmed at different reduction ratios. Those too large to be entirely included in one exposure are filmed beginning in the upper left hand corner, left to right and top to bottom, as many frames as required. The following diagrams illustrate the method:



L'exemplaire filmé fut reproduit grâce à la générosité de:

Division des manuscrits
Archives publiques du Canada

Les images suivantes ont été reproduites avec le plus grand soin, compte tenu de la condition et de la netteté de l'exemplaire filmé, et en conformité avec les conditions du contrat de filmage.

Les exemplaires originaux dont la couverture en papier est imprimée sont filmés en commençant par le premier plat et en terminant soit par la dernière page qui comporte une empreinte d'impression ou d'illustration, soit par le second plat, selon le cas. Tous les autres exemplaires originaux sont filmés en commençant par la première page qui comporte une empreinte d'impression ou d'illustration et en terminant par la dernière page qui comporte une telle empreinte.

Un des symboles suivants apparaîtra sur la dernière image de chaque microfiche, selon le cas: le symbole \rightarrow signifie "A SUIVRE", le symbole ∇ signifie "FIN".

Les cartes, planches, tableaux, etc., peuvent être filmés à des taux de réduction différents. Lorsque le document est trop grand pour être reproduit en un seul cliché, il est filmé à partir de l'angle supérieur gauche, de gauche à droite, et de haut en bas, en prenant le nombre d'images nécessaire. Les diagrammes suivants illustrent la méthode.

PROCLAMATION

CITY OF TORONTO

TO WHOM IT MAY COME

PUBLIC NOTICE is hereby given to the Electors of the said City of Toronto that in obedience to Her Majesty's Writ to the said City of Toronto bearing date the Sixth day of August, One Thousand Eight Hundred and Eighty and One, I require the presence of the said Electors of the said City of Toronto on the Sixth day of August instant, at the hour of Twelve o'clock noon, for the purpose of Electing a fit and proper person to represent the said City of Toronto in the House of Commons of this Province, and in case a Poll shall be taken in the said City of Toronto in any manner by law prescribed, such Poll will

~~Electing a fit and proper person to represent~~

AMMATION.

01647

TORONTO

WIT.

given to the Electors of the City of Toronto,
Writ to me directed, and bearing date the
nd Eight Hundred and Fifty Eight, (1858),
Electors at the City Hall, in the Ward of
of Toronto, on Friday, the Twentieth day
of Twelve o'clock Noon, for the purpose of
represent them in the Legislative Assembly
Poll shall be demanded and allowed in the
Poll will be opened on the Twenty-Seventh

to represent them in the Legislative Assembly

...and proper person to represent
of this Province, and in case a Poll shall
manner by law prescribed, such Poll will
day of the month of August instant. in each
at the following places respectively, that is

For the Ward of **ST. GEORGE**, at the V

For the Ward of **ST. LAWRENCE**, at th

For the Ward of **ST. DAVID**, at the Eng
South side of Duchess Street.

For the Ward of **ST. JAMES**, at the Mec

For the Ward of **ST. ANDREW**, at the
Temperance Streets.

For the Ward of **ST. PATRICK**, at the S
thereof.

For the Ward of **ST. JOHN**, at the Engine
and Agnes Streets.

Of all which every person is hereby require
themselves accordingly.

Given under my hand, at the City of T
month of August in the year of our Lord C
Fifty-Eight.

FREDERICK WILLI

GOD SAVE THE

The Honorable George Brown was declared to be

Representatives in the Legislative Assembly
Poll shall be demanded and allowed in the
Poll will be opened on the Twenty-Seventh
t. in each of the several Wards of the City,
y, that is to say:

at the Victoria Hall, Melinda Street.

ICE, at the Police Court, City Hall.

t the Engine House, No. 5, Berkeley Street,

t the Mechanics' Institute, Court Street.

7, at the Fireman's Hall, corner of Bay and

, at the St. Patrick's Market, in the rear

the Engine house, near the corner of Elizabeth

by required to take notice, and to govern

City of Toronto, this Eleventh day of the
our Lord One Thousand Eight Hundred and

**WILLIAM JARVIS, SHERIFF,
RETURNING OFFICER.**

THE QUEEN.

made on Wednesday the 1st September 1855

