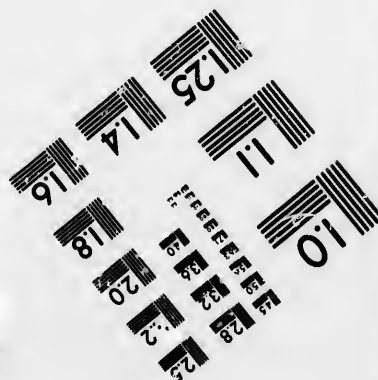
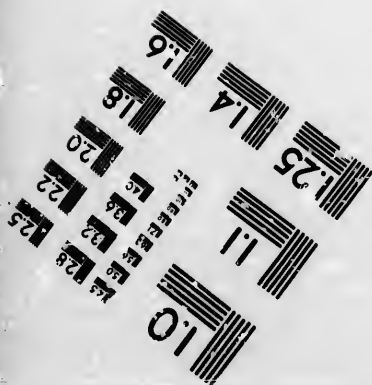
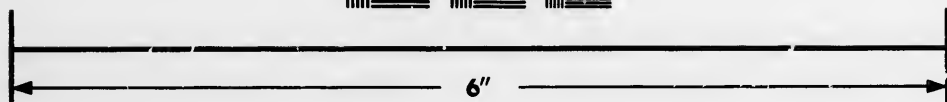
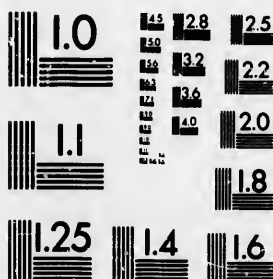


**IMAGE EVALUATION
TEST TARGET (MT-3)**



**Photographic
Sciences
Corporation**

23 WEST MAIN STREET
WEBSTER, N.Y. 14580
(716) 872-4503

1.8
2.0
2.2
2.5
2.8
3.2
3.6
4.0

**CIHM/ICMH
Microfiche
Series.**

**CIHM/ICMH
Collection de
microfiches.**



Canadian Institute for Historical Microreproductions / Institut canadien de microreproductions historiques

10
01

© 1987

Technical and Bibliographic Notes/Notes techniques et bibliographiques

The Institute has attempted to obtain the best original copy available for filming. Features of this copy which may be bibliographically unique, which may alter any of the images in the reproduction, or which may significantly change the usual method of filming, are checked below.

L'Institut a microfilmé le meilleur exemplaire qu'il lui a été possible de se procurer. Les détails de cet exemplaire qui sont peut-être uniques du point de vue bibliographique, qui peuvent modifier une image reproduite, ou qui peuvent exiger une modification dans la méthode normale de filmage sont indiqués ci-dessous.

- | | |
|--|--|
| <input type="checkbox"/> Coloured covers/
Couverture de couleur | <input type="checkbox"/> Coloured pages/
Pages de couleur |
| <input type="checkbox"/> Covers damaged/
Couverture endommagée | <input type="checkbox"/> Pages damaged/
Pages endommagées |
| <input type="checkbox"/> Covers restored and/or laminated/
Couverture restaurée et/ou pelliculée | <input type="checkbox"/> Pages restored and/or laminated/
Pages restaurées et/ou pelliculées |
| <input type="checkbox"/> Cover title missing/
Le titre de couverture manque | <input checked="" type="checkbox"/> Pages discoloured, stained or foxed/
Pages décolorées, tachetées ou piquées |
| <input type="checkbox"/> Coloured maps/
Cartes géographiques en couleur | <input type="checkbox"/> Pages detached/
Pages détachées |
| <input type="checkbox"/> Coloured ink (i.e. other than blue or black)/
Encre de couleur (i.e. autre que bleue ou noire) | <input checked="" type="checkbox"/> Showthrough/
Transparence |
| <input type="checkbox"/> Coloured plates and/or illustrations/
Planches et/ou illustrations en couleur | <input type="checkbox"/> Quality of print varies/
Qualité inégale de l'impression |
| <input type="checkbox"/> Bound with other material/
Relié avec d'autres documents | <input type="checkbox"/> Includes supplementary material/
Comprend du matériel supplémentaire |
| <input type="checkbox"/> Tight binding may cause shadows or distortion
along interior margin/
La reliure serrée peut causer de l'ombre ou de la
distorsion le long de la marge intérieure | <input type="checkbox"/> Only edition available/
Seule édition disponible |
| <input type="checkbox"/> Blank leaves added during restoration may
appear within the text. Whenever possible, these
have been omitted from filming/
Il se peut que certaines pages blanches ajoutées
lors d'une restauration apparaissent dans le texte,
mais, lorsque cela était possible, ces pages n'ont
pas été filmées. | <input type="checkbox"/> Pages wholly or partially obscured by errata
slips, tissues, etc., have been refilmed to
ensure the best possible image/
Les pages totalement ou partiellement
obscurcies par un feuillet d'errata, une pelure,
etc., ont été filmées à nouveau de façon à
obtenir la meilleure image possible. |
- Additional comments:/
Commentaires supplémentaires:
[Printed ephemera] 1 sheet, [4] p.

This item is filmed at the reduction ratio checked below/
Ce document est filmé au taux de réduction indiqué ci-dessous.

10X	12X	14X	15X	16X	18X	20X	22X	24X	26X	28X	30X	32X
						<input checked="" type="checkbox"/>						

The copy filmed here has been reproduced thanks to the generosity of:

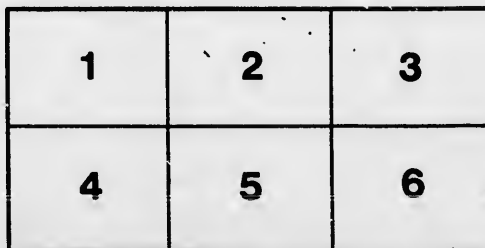
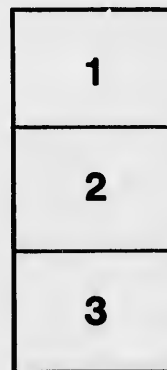
Metropolitan Toronto Library
Canadian History Department

The images appearing here are the best quality possible considering the condition and legibility of the original copy and in keeping with the filming contract specifications.

Original copies in printed paper covers are filmed beginning with the front cover and ending on the last page with a printed or illustrated impression, or the back cover when appropriate. All other original copies are filmed beginning on the first page with a printed or illustrated impression, and ending on the last page with a printed or illustrated impression.

The last recorded frame on each microfiche shall contain the symbol \rightarrow (meaning "CONTINUED"), or the symbol ∇ (meaning "END"), whichever applies.

Maps, plates, charts, etc., may be filmed at different reduction ratios. Those too large to be entirely included in one exposure are filmed beginning in the upper left hand corner, left to right and top to bottom, as many frames as required. The following diagrams illustrate the method:



L'exemplaire filmé fut reproduit grâce à la générosité de:

Metropolitan Toronto Library
Canadian History Department

Les images suivantes ont été reproduites avec le plus grand soin, compte tenu de la condition et de la netteté de l'exemplaire filmé, et en conformité avec les conditions du contrat de filmage.

Les exemplaires originaux dont la couverture en papier est imprimée sont filmés en commençant par le premier plat et en terminant soit par la dernière page qui comporte une empreinte d'impression ou d'illustration, soit par le second plat, selon le cas. Tous les autres exemplaires originaux sont filmés en commençant par la première page qui comporte une empreinte d'impression ou d'illustration et en terminent par la dernière page qui comporte une telle empreinte.

Un des symboles suivants apparaîtra sur la dernière image de chaque microfiche, selon le cas: le symbole \rightarrow signifie "A SUIVRE", le symbole ∇ signifie "FIN".

Les cartes, planches, tableaux, etc., peuvent être filmés à des taux de réduction différents. Lorsque le document est trop grand pour être reproduit en un seul cliché, il est filmé à partir de l'angle supérieur gauche, de gauche à droite, et de haut en bas, en prenant le nombre d'images nécessaire. Les diagrammes suivants illustrent la méthode.

THE
Mechanics' Institute,

OF WINDERMERE, MUSKOKA, ONT.



WINDERMERE, *June 1st, 1885.*

To the friends of Literature and Mental Culture and Recreation, who frequent the Muskoka Lakes in Summer.

LADIES AND GENTLEMEN,

We respectfully submit for your consideration the following particulars of a Literary Institution, about to be established at Windermere :

Windermere is pleasantly situated on the eastern shore of Lake Rosseau, four miles from Port Carling, and nine miles from Rosseau Village.

Its fishing and bathing facilities are not surpassed by any other place on the lakes ; the surrounding scenery is beautiful and delightful, and the locality is pre-eminently healthful.

One of its peculiar advantages is a never-failing spring which, even in the hottest days of summer, gushes forth cold as iced water, and beautifully clear.

It has not been analysed, but has the credit of possessing medicinal qualities of a high order, which however do not disqualify it for ordinary domestic use, and as a refreshing and palatable draught.

During the past year Windermere has been considerably enlarged. Among the buildings recently erected are Cottages for the use of visitors ; a large and commodious boarding house for long or short term visitors and tourists ; a good sized general store and a Methodist Church.

Services are held in the church every Sabbath throughout the year. At Deebank, two miles to the east, a Presbyterian congregation meets every Sabbath in the school-house.

In the immediate vicinity of Windermere, and for a considerable distance around are excellent farms, from which can be had an abundance of butter, milk, eggs, mutton, beef, etc. ; also fruit and other garden produce.

The origin of the project which we especially desire to bring before your notice, was as follows : For some time past we have had in our neighborhood a literary society. Its primary objects were—the acquisition of knowledge, and the mental improvement of its members ; the culture and study of literature, and the adoption and furtherance of measures, tending to the intellectual and moral advancement of the inhabitants of the neighborhood and district.

A want, in the shape of a library, soon made itself pressingly felt. As the circumstances were such as would not justify an outlay sufficiently large to supply the necessity, the Minister of Education was appealed to for assistance. This the Minister very generously consented to give, provided we changed our institution to a Mechanics Institute, and became incorporated under Chap. 168, R. S. O. The members of the Society gladly embraced the offer, and steps have been taken towards incorporation. It has been resolved, also, to extend the original idea, and construct a building, suitable for a reading room and library. Building operations will commence at once, and, it is hoped, will be completed by the end of June. The site which the building will occupy, is prettily situated about 150 yards from Windermere Wharf, on the base of the angle formed by Harcourt Point, with Paton Bay on the one hand and Windermere Bay on the other ; each of which possesses a splendid sandy beach. The library will

contain volumes on Philosophy, Mechanics, Science, Arts, History, Poetry, Biography, and general literature. A complete Sportsman's Library, including literature relating to hunting, angling, and camping out in Muskoka, will be procured for the benefit of those of sporting proclivities, who may visit us in Summer. The reading room will be furnished with chess, draughts, dominoes, periodicals, standard magazines, the daily Toronto newspapers, and one or two of the New York and Chicago dailies. Provision will be made for the giving of lectures and other literary entertainments.

It is not intended that the undertaking shall be, in any sense, a speculative enterprise. The aim of the promoters is to provide good sound reading for the people of this region; to elevate the general standard of intelligence, and by the pursuance of the objects heretofore mentioned, make the institution wield an influence for good, which shall be *felt* throughout the length and breadth of the district. In order to make the project a greater success than it otherwise could be, the co-operation of every lover of literature and literary institutions, who is interested in these parts, is respectfully solicited.

As help is urgently needed, in placing the Institute upon a firm foundation, we hope your encouragement and material assistance will be extended to us, believing, as we do, that our endeavour will meet with your hearty approbation. Contributions, however small, in money, books, or material for the adornment or furnishing of the Institute, will be thankfully received, and contributors shall be entitled to the privileges of the Institute for a definite period, to be hereafter determined by the Board of Directors; or something tangible will be done to commemorate their generosity.

Contributions in Toronto may be left with—

Messrs. WILLIAMSON & Co., No. 5 King St. West ;

Mr. C. MACKENZIE (The Shedden Co.), No. 10 Front
Street East ;

Mr. JOHN PATON (London & Ont. Investment Co.), No.
84 King St. East ;

or they may be sent to any of the members of the Provisional
Committee at Windermere, who have the honor to be,

Ladies and Gentlemen,

Your obedient Servants,

GEORGE PATON, *President.*

R. MCGREGOR, *Sec. Treas.*

J. R. BOYD.

DAVID FIFE.

THOS. AITKIN. -

*Provisional Committee of The Mechanics'
Institute of Windermere, Muskoka, Ont.*

