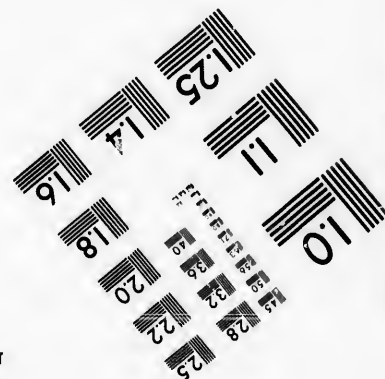
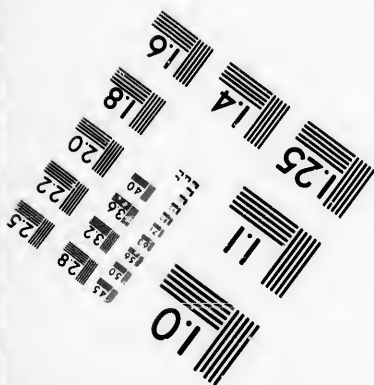
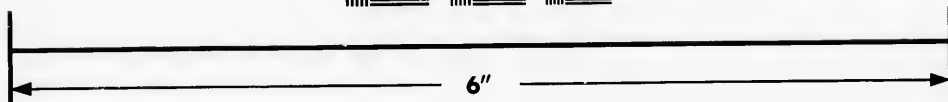
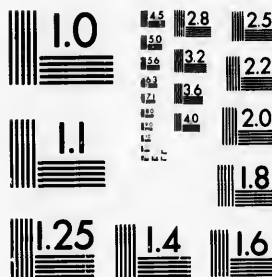


**IMAGE EVALUATION
TEST TARGET (MT-3)**



**Photographic
Sciences
Corporation**

23 WEST MAIN STREET
WESTER, N.Y. 14580
(716) 872-4503



**CIHM/ICMH
Microfiche
Series.**

**CIHM/ICMH
Collection de
microfiches.**



Canadian Institute for Historical Microreproductions / Institut canadien de microreproductions historiques



© 1985

Technical and Bibliographic Notes/Notes techniques et bibliographiques

The Institute has attempted to obtain the best original copy available for filming. Features of this copy which may be bibliographically unique, which may alter any of the images in the reproduction, or which may significantly change the usual method of filming, are checked below.

L'Institut a microfilmé le meilleur exemplaire qu'il lui a été possible de se procurer. Les détails de cet exemplaire qui sont peut-être uniques du point de vue bibliographique, qui peuvent modifier une image reproduite, ou qui peuvent exiger une modification dans la méthode normale de filmage sont indiqués ci-dessous.

- | | |
|--|--|
| <input type="checkbox"/> Coloured covers/
Couverture de couleur | <input type="checkbox"/> Coloured pages/
Pages de couleur |
| <input type="checkbox"/> Covers damaged/
Couverture endommagée | <input type="checkbox"/> Pages damaged/
Pages endommagées |
| <input type="checkbox"/> Covers restored and/or laminated/
Couverture restaurée et/ou pelliculée | <input type="checkbox"/> Pages restored and/or laminated/
Pages restaurées et/ou pelliculées |
| <input type="checkbox"/> Cover title missing/
Le titre de couverture manque | <input checked="" type="checkbox"/> Pages discoloured, stained or foxed/
Pages décolorées, tachetées ou piquées |
| <input checked="" type="checkbox"/> Coloured maps/
Cartes géographiques en couleur | <input type="checkbox"/> Pages detached/
Pages détachées |
| <input type="checkbox"/> Coloured ink (i.e. other than blue or black)/
Encre de couleur (i.e. autre que bleue ou noire) | <input checked="" type="checkbox"/> Showthrough/
Transparence |
| <input type="checkbox"/> Coloured plates and/or illustrations/
Planches et/ou illustrations en couleur | <input type="checkbox"/> Quality of print varies/
Qualité inégale de l'impression |
| <input type="checkbox"/> Bound with other material/
Relié avec d'autres documents | <input type="checkbox"/> Includes supplementary material/
Comprend du matériel supplémentaire |
| <input type="checkbox"/> Tight binding may cause shadows or distortion
along interior margin/
La reliure serrée peut causer de l'ombre ou de la
distortion le long de la marge intérieure | <input type="checkbox"/> Only edition available/
Seule édition disponible |
| <input type="checkbox"/> Blank leaves added during restoration may
appear within the text. Whenever possible, these
have been omitted from filming/
Il se peut que certaines pages blanches ajoutées
lors d'une restauration apparaissent dans le texte,
mais, lorsque cela était possible, ces pages n'ont
pas été filmées. | <input type="checkbox"/> Pages wholly or partially obscured by errata
slips, tissues, etc., have been refilmed to
ensure the best possible image/
Les pages totalement ou partiellement
obscurcies par un feuillet d'errata, une pelure,
etc., ont été filmées à nouveau de façon à
obtenir la meilleure image possible. |
| <input type="checkbox"/> Additional comments:/
Commentaires supplémentaires: | |

This item is filmed at the reduction ratio checked below/
Ce document est filmé au taux de réduction indiqué ci-dessous.

10X	14X	18X	22X	26X	30X
<input type="checkbox"/>	<input type="checkbox"/>	<input checked="" type="checkbox"/>	<input type="checkbox"/>	<input type="checkbox"/>	<input type="checkbox"/>
12X	16X	20X	24X	28X	32X

The copy filmed here has been reproduced thanks to the generosity of:

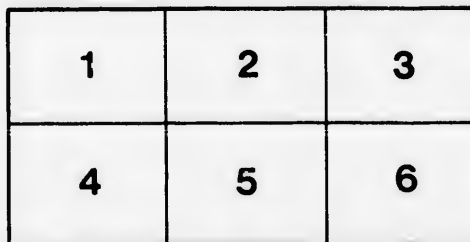
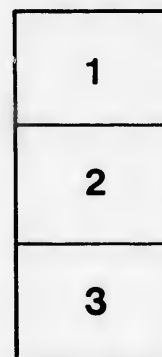
Seminary of Quebec
Library

The images appearing here are the best quality possible considering the condition and legibility of the original copy and in keeping with the filming contract specifications.

Original copies in printed paper covers are filmed beginning with the front cover and ending on the last page with a printed or illustrated impression, or the back cover when appropriate. All other original copies are filmed beginning on the first page with a printed or illustrated impression, and ending on the last page with a printed or illustrated impression.

The last recorded frame on each microfiche shell contains the symbol \rightarrow (meaning "CONTINUED"), or the symbol ∇ (meaning "END"), whichever applies.

Maps, plates, charts, etc., may be filmed at different reduction ratios. Those too large to be entirely included in one exposure are filmed beginning in the upper left hand corner, left to right and top to bottom, as many frames as required. The following diagrams illustrate the method:



L'exemplaire filmé fut reproduit grâce à la générosité de:

Séminaire de Québec
Bibliothèque

Les images suivantes ont été reproduites avec le plus grand soin, compte tenu de la condition et de la netteté de l'exemplaire filmé, et en conformité avec les conditions du contrat de filmage.

Les exemplaires originaux dont la couverture en papier est imprimée sont filmés en commençant par le premier plat et en terminant soit par la dernière page qui comporte une empreinte d'impression ou d'illustration, soit par le second plat, selon le cas. Tous les autres exemplaires originaux sont filmés en commençant par la première page qui comporte une empreinte d'impression ou d'illustration et en terminant par la dernière page qui comporte une telle empreinte.

Un des symboles suivants apparaîtra sur la dernière image de chaque microfiche, selon le cas: le symbole \rightarrow signifie "A SUIVRE", le symbole ∇ signifie "FIN".

Les cartes, planches, tableaux, etc., peuvent être filmés à des taux de réduction différents. Lorsque le document est trop grand pour être reproduit en un seul cliché, il est filmé à partir de l'angle supérieur gauche, de gauche à droite, et de haut en bas, en prenant le nombre d'images nécessaire. Les diagrammes suivants illustrent la méthode.

errata
to
t
e pelure.
on à



32X

A

27-

MAP OF THE CANADAS,

EXHIBITING THE

SITUATION OF EVERY TOWNSHIP,

WITH THE

NAVIGABLE RIVERS, LAKES, AND CANALS, CON-
SPICUOUSLY LAID DOWN;

TOGETHER WITH

AN ACCOUNT OF THE CLIMATE, SOIL, AND PRODUC-
TIONS, AND OTHER INFORMATION

INTERESTING TO EMIGRANTS.

BY

FRANCIS FAIRPLAY



LONDON:

PRINTED FOR THE AUTHOR,

AND PUBLISHED BY ALL BOOKSELLERS.

MDCCGXXXIV.

B 2

LONDON :
Printed by WILLIAM CLOWES,
Duke-street, Lambeth.

MAP OF THE CANADAS.

THAT a correct knowledge of the geographical position and formation of a country is of the first importance to the inhabitants of that country, is an assertion that few or none will be found to dispute; but this knowledge, except to the statesman and merchant, is of little consequence to the inhabitants of Europe, compared to the vast influence which a thorough acquaintance with the face of the country exercises over the ultimate prosperity of individuals in a region so thinly peopled as America, where the situation, or, as the Americans term it, the locality of the land, constitutes the greatest part of its value.

For want of a tolerably accurate idea of the course of the navigable waters, and the means of reaching a market, a man may set himself down in the face of difficulties which he may not discover for years; and then the chances are, that his life will not last long enough to

correct his error, and he must content himself with his lot in the best manner he may: at any rate, his past labour is lost, or nearly so.

This matter is so well understood and appreciated in the United States, that the greatest attention is paid to mapping, and the study of maps. The rivers and canals are laid down most conspicuously, with all the canals and rail-roads that are only projected; and even situations, where facilities present themselves for their construction, are pointed out. Scarcely any person is met on a journey without a map of the state in which he is travelling; and the cheap rate at which they are got up, and the portability of their bindings, speak forcibly of the universal estimation in which such knowledge is held.

It is not every American custom which is worth copying, but this one is founded in such good sense, and has so evidently arisen from the necessity of the case, that it would be unpardonable not to follow it.

~ In looking over the best maps of Canada, the inexperienced eye is bewildered by the multiplicity of water-courses over the face of the whole country. The great majority of these,

however valuable they may be for irrigation and for milling purposes, are not at present navigable, though many are capable of being made so, whenever the increased settlement will warrant the expense. It has, therefore, been thought best to leave these out in the map accompanying the present sketch, because they draw off the attention from the main streams, and also because all who have land to dispose of, whether individuals or large proprietors, have maps whereon their lands are described on a larger scale.

Roads are comparatively of small importance in Canada, and do not engage a large share of attention, except in the neighbourhood of the larger towns; and for obvious reasons: any one will imagine the great labour in making a road through a forest, and, when made, of keeping it in tolerable plight to bear heavy loads in the spring and autumn; besides, the frost and snow convert the worst roads into the best, for the rapid and easy conveyance of heavy loads on sledges. Most of the streams, though not navigable in summer, are converted into excellent roads in the winter; and, therefore, all the heavy work upon a farm, the conveyance of produce to

market, and the receiving heavy goods from the nearest port, is reserved to that time; and hence the necessity for good roads is not felt so greatly as it would be if the winters did not so conveniently and delightfully supply the defect.

It would be quite superfluous to reiterate arguments to an American, in proof of the advantages of being seated on or near a navigable water; nor should it be further noticed here, but that some persons, from interested motives, have contended that the small settler is not so much interested in this question, because he can find a purchaser in the nearest storekeeper. It is true that he may find it his best interest to dispose of his crop to him; but as the latter purchases with the sole intent of sending it to the great ports, *the cost of transport, be it more or less, must be paid out of the produce, and nothing else.* To this consideration is to be superadded, that the cost of every article consumed on the farm must be enhanced from the same cause.

It is also true that land near the great lakes and rivers is not to be obtained except at a high price, compared with the inland tracts, (what need of greater proof of the value of water-com-

munication?) and that fine land on Lake Huron or Lake Erie may be had at a much less price than land near Lake Ontario; but the *real* value of each is pretty accurately measured. The small expense of reaching a market compensates for an increased outlay in the land.

But as it is quite impossible for every emigrant (especially those of small means) to get land near the St. Lawrence and Lake Ontario, it becomes consequently a point of importance that he should set himself down as near them as possible. For this purpose it is presumed that the map will afford valuable information, exhibiting in the plainest manner the relative situation of every one of the 446 townships into which the provinces are divided; and as it is the custom, in speaking of land, to say that it is situate in such a township and district (not naming the county), there can be no difficulty, by the alphabetical arrangement of their names, in at once discovering whether the description given of any township by the seller is generally correct.

There are three modes of obtaining land in either of the Canadas: first, from Government, to whom application may be made at Quebec

for land in the Lower Province; and at the Government Office at York, for land in the Upper Province. Mr. Buchanan of Quebec is, however, authorized to treat for and dispose of the Crown lands in both provinces, and will explain their situation, and the terms on which they will be granted.

The second mode of purchasing land is from the Land Companies. The British-American Land Association is not yet prepared for business; it is understood that they will confine themselves to the Lower Province, and principally to the townships in the district of St. Francis.

The Canada Land Company have not any land in the Lower Province; they have some in almost all the townships of the Upper Province, besides the Huron tract of 1,100,000 acres, and the township of Guelph, which are entirely theirs. In the summer, the Company's agent, resides at Quebec, and is well qualified to give every information as to their lands, and the best mode of reaching York, where their office is, and where only bargains can be concluded.

The third mode of obtaining land, either in its wild state, or partially cleared and culti-

vated, is by purchase from individual proprietors; at the sheriff's sales; or at the annual sales of land which has been granted, and where the grantees have failed in performing the conditions of the grant or to pay the assessment.

There is some risk in purchasing land in the Lower Province from individuals; and great caution should be exercised, part only being subject to registry; but in the Upper Province there is little danger of getting a bad title, as every part is subject to registry, and common prudence is sufficient to guard against that risk.

It may here be allowed to call the attention of the intended settler to the *situation* of the Canada Company's large tracts, viz., Guelph, and the Huron tract.

Individuals of small means, and not connected with others going out with the like intentions, may perhaps not do amiss by taking up land at Guelph, which is within thirty miles of a port on Lake Ontario, to which there is a road called *good* in American phrase, but which will not be estimated at that rate by an Englishman, until he has lost all recollection of those which he has been in the habit of calling *bad*. The land bears an excellent character; and the Company

have erected mills and stores, which are, doubtless, very essential establishments to be within reasonable distance of a settler.

Goderich, in the Huron tract, it will be seen by the Map, is removed from Lake Ontario between 400 and 500 miles by water communication. The 80 or 90 miles of road from Goderich to Port Talbot on Lake Erie would reduce the distance; but such a route is not to be looked to for the advantageous conveyance of produce to a market, in such a country as America. There is surely no need of argument to prove that a bushel of wheat is of less value, by something very considerable, in the Huron tract, than it is on the shores of Lake Ontario, and at the same time that any article of British manufacture or West Indian produce must be dearer in the first than in the last-named situation; and, therefore, till land situate some hundreds of miles nearer the great markets of consumption and supply has become more scarce than it at present is, or is likely to be for many years to come, it certainly appears very questionable policy for any individual to fix himself at so remote a distance. But if these points deserve the attention of persons with scanty means, still more

do they press themselves on those who are possessed of some capital, and whose lives have been spent in a well-peopled land, and in the interchange of the charities and civilities of life, the worth of which is not fully discovered till their loss is felt. By a little inquiry and perseverance, plenty of land may be found near the shores of the St. Lawrence and Lake Ontario, either wild or partially cleared, and possessing all the advantages of Guelph or the Huron tract, besides being within a reasonable distance of the large towns and markets, and wearing altogether an aspect not so repulsive to an old country man (as the Europeans are called) as the interminable wilds of Guelph or Lake Huron.

The Lower Province, although possessing the advantage over the Upper, in respect to the markets for grain and other exportable produce, including beef and pork, and also possessing the large cities of Montreal and Quebec, at which many of the smaller productions of a farm will bring a good price, yet, from the length and severity of the winters, is undoubtedly calculated rather for the Scotch and north of England farmer, than for any other class of agriculturists.

Quebec, January, 1834.

CLIMATE, SOIL, AND PRODUCTIONS OF UPPER
CANADA.

From an Official Report of an Agent of His Majesty's Government, laid before a Select Committee of the House of Commons, in 1823, by his Majesty's Under Secretary of State for the Colonial Department.

THE climate of Upper Canada is considerably milder than that of the Lower Province, and the winter shorter in the same proportion. In both these respects it improves as you proceed to the westward; so much so, that although the frost generally sets in in November, at its eastern extremity, and continues in that neighbourhood till the middle of April, it rarely commences on the shores of Lake Erie before Christmas, and it usually disappears between the 25th of March and the 1st of April.

On a comparison with the climate of Great Britain, the heat in the summer months is somewhat greater, but never oppressive, as it is always accompanied with light breezes. There is less rain than in England, but it falls at more regular periods, generally in the spring and autumn. The winter cold, though it exceeds that of the British isles, is the less sensibly felt, in consequence of its dryness, and seldom continues intense for more than three days together, owing to the regular fluctuation of the wind between the north-west and south-west points. It may be observed, that the winter season is the most favourable to land-carriage, as the roads then admit of sledging in all directions, which is a very expeditious mode of conveyance, and attended with but little draught, so that one horse or ox can, in this manner, easily draw

double what he can upon wheels. It is hardly necessary to state, that, in a country so overspread with timber, there can never be a deficiency of fuel. As the forests disappear, the climate improves.

Soil.—Upper Canada is blessed with as productive a soil as any in the world, and it is easily brought into cultivation. The nature of the soil may be invariably discovered by the description of timber it bears. Thus, on what is called hard-timbered land, where the maple, beech, black birch, ash, cherry, lime, elm, oak, black walnut, butter-nut, hickory, plane, and tulip-tree, &c., are found, the soil consists of a deep black loam. Where the fir and hemlock pine are intermixed in any considerable proportion with other trees, clay predominates; but where they grow alone, which is generally on elevated situations, sand prevails. This also happens where the oak and chestnut are the only trees. These sandy soils, though naturally unfavourable to meadow and pasture, are found to produce the brightest and heaviest wheats, and can, with the assistance of gypsum, which abounds in many parts of the province, be made to bear the finest possible crops of clover and Indian corn. In moist seasons the clay furnish the greatest burden of grass. Perhaps there does not exist, in any quarter of the globe, a country of the extent of Upper Canada, containing so small a quantity of waste land, either of marsh or mountain, yet there is not any deficiency of water; for, independently of the numerous rivers and streams which flow through the country on every side, good springs are universally found either on the surface or by digging for them.

Natural Productions.—The timber most esteemed in Upper Canada for building and farming purposes is the

white oak (very similar to the English), and the yellow pine, a sort of deal which cuts up into excellent boards, as does also the tulip tree, which there grows to an immense size. This latter timber is by many considered the best for weather boarding, from its superior facility in taking paint, and being of the poplar tribe, it is less liable than most other woods to accidents from fire, as it never blazes; the oak and hickory are principally used for ploughs, cart-wheels, &c.

The black walnut, cherry, and curled maple, work up into durable and beautiful furniture of all sorts. From the maple, the settlers, by a very simple and easy process of tapping, obtain in a few days a sufficient quantity of sugar to supply their families for a year; many, indeed, manufacture a considerable surplus for sale. Soap may be made in any quantities from the wood-ashes, with the addition of a certain proportion of tallow or grease of any kind. Plums, cherries, crab-apples (which latter yield an excellent preserve), gooseberries, currants, strawberries, raspberries, grapes, cranberries, walnuts, chestnuts, and filberts, grow wild in the woods, where game is sufficiently abundant; consisting of red-deer, hares, pheasants, woodcocks, snipes, and quails, with many other birds, good for the table; in which enumeration should not be omitted the wild pigeon, which, at certain periods of the year, migrate from the westward in flocks of such magnitude as surpasses all description, and are excellent eating.

Grain, &c.—The grain grown in Upper Canada consists of spring and winter wheat, oats, barley, rye, buck-wheat, and Indian corn, the last of which is a most important article of consumption. Peas are the only field pulse cultivated there; the summer heats being considerably too great for beans. There are potatoes, tur-

nips, pumpkins, clover (red and white), and timothy grass. Both flax and hemp grow remarkably well.

Fruit and Vegetables.—All the fruits and herbs common to the English kitchen-garden thrive well in this province; and several of the former, which cannot in all seasons be had in perfection, in England, without forcing, succeed there in the open air; melons in particular, which are excellent. There is also a great variety of apples, pears, plums, &c., of the finest quality which are known to European orchards. The stone-fruit is also raised on standards.

Agriculture.—Course of crops. The soil being of such a nature as not to need manure, the same attention is not there paid to the regular succession of crops as in Great Britain. After wheat, which is generally harvested in the month of July and beginning of August, rye can be sown on the same ground in the autumn to advantage; the rye crop is frequently laid down with clover or grass seed, which, unless the farmer is pressed for ground, will continue to furnish good meadow and pasture for four or five years, otherwise it is ploughed up before winter, and in the spring put into pease, spring wheat, Indian corn, barley, oats, or buck-wheat, all of which answer very well; the two first rather benefiting than impoverishing the land. The leaves and tops of the Indian corn are likewise excellent winter food for cattle, particularly milch cows. After any of these latter crops, wheat may be sown again; potatoes and turnips succeed well upon newly-cleared land, as a first crop; potatoes being put into the ground with a hand-hoe, from the beginning of May to the middle of June; turnips are sown about the first week in August, after the greatest heat has subsided, and at which time the fly

has disappeared, simply requiring the harrow. It is to be understood that the new land is never ploughed for the first crop. Timothy is the grass most cultivated, as it affords a large burden of the best hay, besides good after-grass; however, it is best mixed with clover, to which it serves as a support, and prevents matting.

To this may be added the following general rules, extracted from 'Stuart's Emigrant's Guide,' published in 1820. The oak and chestnut generally grow on dry ground; the latter more especially on ridges. The black oak and chestnut grow on a sandy and poor soil, as do the various species of pine, including the hemlock. White and red oak, blended with other woods, bespeak a strong and lasting soil. Beech and white oak lands seem most favourable for wheat. The maples and black walnut—particularly the latter, where it grows in large clusters—point out the richest soils; generally low and somewhat damp, in a state of nature, but only requiring clearance to become abundantly dry. Amongst the underwood, the prickly ash and spice wood promise the best.

REFERENCES TO THE SITUATION OF
THE TOWNSHIPS ON THE MAP.

LOWER PROVINCE.

QUEBEC DISTRICT.

Adstock	10	Leeds	5
Armagh	23	Marlow	19
Ashford	28	Nelson	3
Broughton	8	Olney	14
Buckland	21	Risborough	18
Bungay	31	Spalding	17
Coleraine	9	Standon	25
Cranbourn	24	Shenly	13
Dorset	15	Somerset	*
Frampton	22	Stoneham	1
Gayhurst	16	Tewkesbury	2
Halifax.—See it in ‘District of St. Francis.’		Thetford	7
Inverness	4	Tring	11
Ireland	6	Ware	27
Ixworth	29	Watford	26
Jersey	20	Winslow	12
		Woodbridge	30

DISTRICT OF THREE RIVERS.

Arthabaska	14	Caxton	2
Aston	5	Grantham	3
Blandford	7	Horton	10
Bulstrode	8	Hunterstown	1

Maddington	6	Warwick	13
Simpson	12	Wendover	4
Stamford	9	Wickham	11

DISTRICT OF ST. FRANCIS.

Adstock	25	Hampden	24
Ascot	13	Hartwell	29
Auckland	36	Hereford	41
Barford	40	Kingsey	2
Brompton	8	Lingwick	20
Bury	19	Marston	27
Chesham	31	Melbourne	3
Chester	6	Newport	23
Clifton	35	Shipton	4
Clinton	32	Stanhope	39
Compton	24	Stratford	21
Croydon	38	Stoke	14
Ditchfield	28	Tingwick	5
Ditton	30	Upton.—See 'Montreal District.'	
Drayton	42	Weedon	16
Dudswell	15	Westbury	18
Durham	1	Whitton	26
Eaton	22	Windsor	9
Emberton	37	Wolfestown	12
Garthby	17	Wooburn	33
Halifax	6	Wooten	10
Ham	11		

DISTRICT OF MONTREAL.

Abercrombie	39	Amherst	28
Aberford	2	Arundel	29
Acton	50	Barford.—See 'District of St. Francis.'	
Aldfield	12		

LOWER PROVINCE.

19

Barnston	67	Kilkenny	40
Beresford	36	Kirby	1
Bolton	60	Lochaber	27
Brandon	42	Lichfield	14
Bristol	16	Mansfield	13
Brome	59	Marsham	18
Buckingham	26	Milton	51
Caenwood	9	Onslow	17
Chatham	34	Orford	57
Chertsey	38	Ponsonby	44
Chichester	6	Pontefract	8
Clarendon	15	Portland	20
Derry	21	Potton	65
Durham	53	Rawdon	41
Eardley	23	Rippon	22
Ely	53	Roxton	52
Esher	4	Sheen	5
Farnham	58	Shefford	55
Godmanchester	45	Sherrington	48
Granby	54	Stanbridge	62
Grandison	35	Stanstead	66
Grenville	33	Stukely	56
Harrington	31	Sutton	64
Hastings	3	Templeton	25
Hatley	61	Thorne	10
Hemmingford	47	Upton	49
Hinchinbrook	46	Wakefield	19
Howard	30	Waltham	7
Huddersfield	11	Wentworth	32
Hull	24	Wexford	37
Kildare	43		

EASTERN DISTRICT.

Charlottenburg	. 11	Matilda	. . 7
Cornwall	. . 10	Mountain	. . 1
Finch	. . . 3	Osnaburg	. . . 9
Kenyon	. . . 5	Roxborough	. . . 4
Lancaster	. . . 12	Williamsburgh	. . . 8
Lochiel	. . . 6	Winchester	. . . 2

JOHNSTOWN DISTRICT.

Augusta	. . 17	Gower (South)	. 12
Bastard	. . . 8	Kitley	. . . 9
Burgess	. . . 2	Lansdown	. . . 14
Crosby (North)	. . 1	Leeds	. . . 13
Crosby (South)	. . 7	Marlborough	. . . 5
Edwardsburg	. . 18	Montague	. . . 4
Elizabeth Town	. 16	Oxford	. . . 11
Elmsley	. . . 3	Wolford	. . . 10
Gower (North)	. . 6	Yonges	. . . 15

OTTAWA DISTRICT.

Alfred	. . . 5	Hawkesbury (East)	7
Caledonia	. . . 8	Hawkesbury (West)	6
Cambridge	. . . 9	Osgood	. . . 11
Clarence	. . . 3	Plantagenet	. . . 4
Cumberland	. . . 2	Russel	. . . 10
Gloucester	. . . 1		

BATHURST DISTRICT.

Bathurst	. . . 15	Goulburn	. . . 18
Beckwith	. . . 17	Horton	. . . 1
Dalhousie	. . . 12	Huntley	. . . 9
Darling	. . . 4	Lanark	. . . 11
Drummond	. . 16	Lovat	. . . 3
Fitzroy	. . . 6	M'Nab	. . . 2

UPPER PROVINCE.

21

March	8	Sherbrook (North)	13
Nepean	19	Sherbrook (South)	14
Pakenham	5	Torbottom	7
Ramsey	10		

MIDLAND DISTRICT.

Adolphustown	37	Lake	1
Ameliasburg	32	Loughborough	27
Anglesea	4	Madox	9
Barie	5	Marmora	8
Bedford	20	Marysburg	36
Camden	25	Olden	13
Clarendon	6	Oro	14
Elzevir	10	Pittsburg	31
Ernest Town	29	Palmerston	7
Fredericksburg	28	Portland	26
Grimsthorp	3	Rawdon	15
Hallowell	35	Richmond	24
Hillier	33	Sheffield	18
Hinchinbrook	19	Sidney	21
Huntingdon	16	Sophiasburg	34
Hungerford	17	Thurlow	22
Kalador	11	Tudor	2
Kenebec	12	Tyendingo, or Mo-	
Kingston	30	hawk	23

NEWCASTLE DISTRICT.

Alnwick	20	Darlington	23
Asphodel	19	Duro	10
Belmont	13	Dummer	11
Burleigh	5	Eldon	1
Cartwright	14	Emilly	8
Cavan	16	Fenelon	2
Clark	24	Haldimand	27
Cramah	28	Hamilton	26

Harvey	4	Ops	7
Hope	25	Otanabee	18
Manvers	15	Percy	21
Mariposa	6	Seymour	22
Methune	12	Smith	9
Monaghan	17	Verulam	3
Murray	29		

HOME DISTRICT.

Adjala	31	Mulmur	27
Albion	39	Newmarket	35
Alta	2	Orillia	10
Amaranth	29	Oro	12
Artemesia	15	Osprey	16
Brock	38	Pickering	47
Essa	19	Proton	25
Etobikoke	a	Rama	13
Euphrasia	14	Reach	43
Flos	8	Scarborough	46
Georgiana	22	Scotts	37
Guilliamsburg (East)	34	Sunnidale	4
Guilliamsburg (West)	33	Tay	6
Guilliamsburg (North)	21	Tecumseth	32
Innisfall	20	Thora	23
Java	3	Tiney	5
King	40	Toronto, Gore of	b
Luther	28	Tossorondio	18
Mara	24	Uxbridge	42
Markham	41	Vaughan	44
Matchadash	7	Vespra	11
Medonto	9	Whitby	48
Melanethon	26	Whitchurch	36
Mona	30	York	45
Merlin	17	Zoro	1

GORE DISTRICT.

Ancaster 20	Glanford a
Barton b	Guelph 4
Beverley 15	Nassagiveya 11
Binbrook c	Nelson 17
Caledon 7	Nichol 1
Chinguacoucy 13	Puslinch 10
Dumfries 14	Saltfleet d
Eramosa 5	Toronto 19
Erin 6	Trafalgar 18
Esquesing 12	Waterloo 9
Flamorough 16	Wilmot 8
Garafraxa 2	Woolwich 3

NIAGARA DISTRICT.

Bertie 17	Louth 3
Caistor 6	Moulton 14
Canborough 11	Niagara 5
Clinton 2	Pelham 8
Crowland 12	Stamford 10
Gainsborough 7	Thorold 9
Grantham 4	Wainfleet 15
Grimsby 1	Willoughby 13
Humberston 16	

LONDON DISTRICT.

Aldborough 19	Delaware 4
Bayham 24	Dorchester 12
Blandford 9	Dunwich 20
Blenheim 10	Ekfrid 2
Burford 15	Houghton 30
Caradoc 3	Lobo 5
Charlotteville 26	London 6
Dereham 13	Malahide 23

UPPER PROVINCE.

Middleton	25	Townsend	18
Mesa	1	Walpole	28
Nissouri	7	Walsingham	31
Norwich	14	Westminster	11
Oakland	16	Windham	17
Oxford	32	Woodhouse	27
Rainham	29	Yarmouth	22
Southwold	21	Zora	8

WESTERN DISTRICT.

Baldon	22	Mersey	21
Bosanquet	1	Orford	17
Camden	7	Raleigh	14
Chatham	4	Rochester	11
Colchester	19	Romney	12
Dawn	5	St. Clair	2
Gosfield	20	Sandwich	9
Harwich	15	Sombra	3
Howard	16	Tilbury (East)	13
Maidstone	10	Tilbury (West)	8
Maldon	18	Zone	6

HURON TRACT.

Biddulph	c	Hallett	h
Blanchard	o	Hibbert	n
Colborne	a	Logan	p
Downie	s	M'Gillivray	f
Easthope (North)	t	M'Killop	m
Easthope (South)	u	Stanley	c
Ellice	r	Stephen	e
Fullarton	q	Tucker Smith	i
Goderich	b	Usborne	k
Hay	d	Williams	g

18
28
31
11
17
27
22
8

21
17
14
11
2
2
9
3
3
8
6

h
n
p
f
n
c
e
i
k
g



3 4 83 82

48

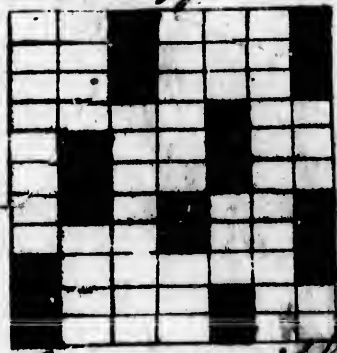
47

46

45



*Diagram of a Township, showing
the brown & grey Reserves*



Lake

Huron

In

Town

82

81

80

79

Thundering

UP

S. Schuyler

Ottawa

French R.

Georgian

Living

CAN

Bay

R

P

Lower R.

UPP

uron

Indian

Territory

					5	6	7		
					8	9	10	13	
					11	12			
1	2	3	4		18	20			24
14	76	17			19	21	22		23
15					26	27	28		
					32	33	34	37	28
									14
									15
									16

Upper

78

77

76

Map of

UPPER & LOWER CANADA

Map of
LO

with the

DISTRICTS & TOWNSHIPS

into which the Provinces are divided.

ICT
ch the



77

76

75

Map of

DA LOWER CANADA,

with the

ICTS & TOWNSHIPS

ch the Provinces are divided.

Three

W e M o n L o w e r E a R

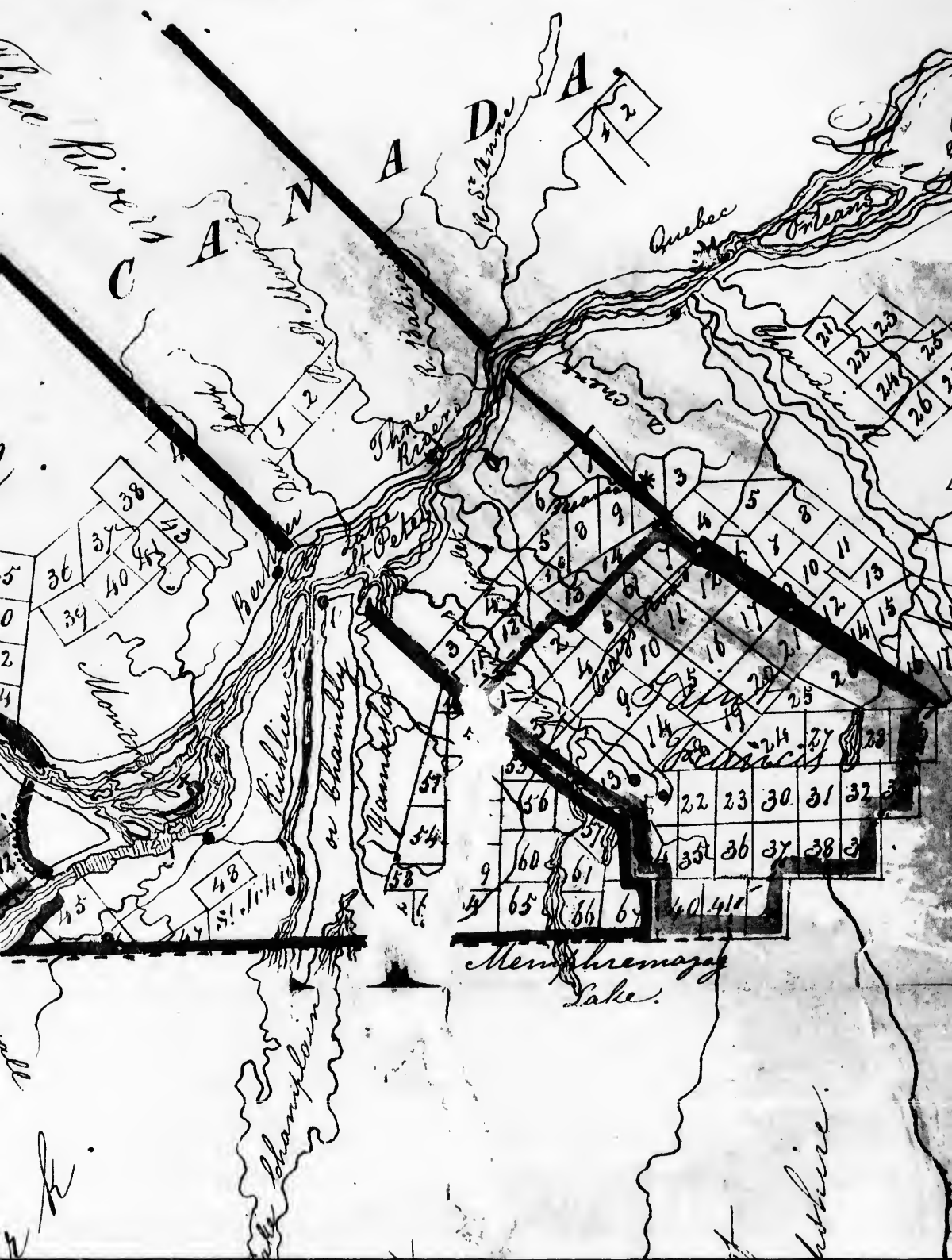


74

73

72

71



Memphremagog Lake.

where.





44

43

42

84

83

82





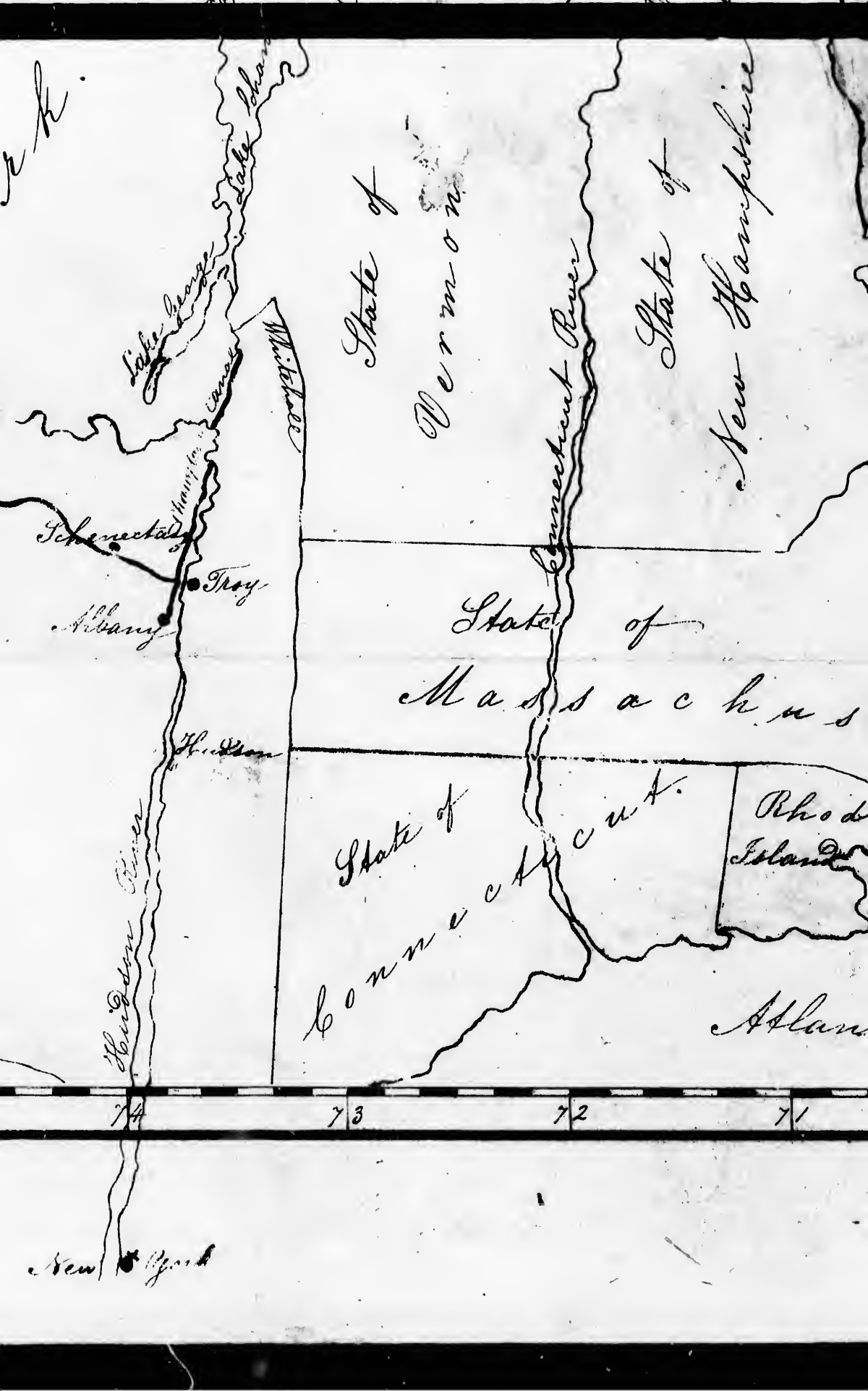
State of
New York

78

77

76





State of

Vermont

State of

New Hampshire

State of
Massachusetts

State of
Connecticut

Rhode
Island

Atlantic

Lake Champlain
Canal

Hudson River

Schenectady

Albany

Troy

Hudson

New York

74

73

72

71

