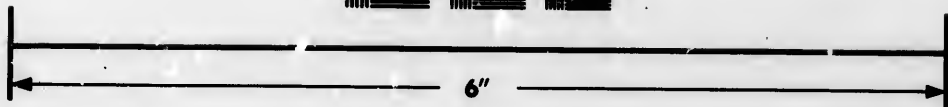
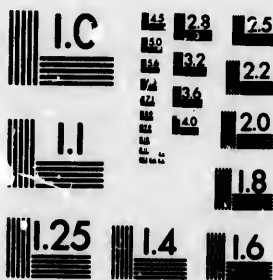


**IMAGE EVALUATION  
TEST TARGET (MT-3)**



**Photographic  
Sciences  
Corporation**

23 WEST MAIN STREET  
WEBSTER, N.Y. 14580  
(716) 872-4503

**CIHM/ICMH  
Microfiche  
Series.**

**CIHM/ICMH  
Collection de  
microfiches.**



**Canadian Institute for Historical Microreproductions / Institut canadien de microreproductions historiques**

**© 1983**

Technical and Bibliographic Notes/Notes techniques et bibliographiques

The Institute has attempted to obtain the best original copy available for filming. Features of this copy which may be bibliographically unique, which may alter any of the images in the reproduction, or which may significantly change the usual method of filming, are checked below.

L'Institut a microfilmé le meilleur exemplaire qu'il lui a été possible de se procurer. Les détails de cet exemplaire qui sont peut-être uniques du point de vue bibliographique, qui peuvent modifier une image reproduite, ou qui peuvent exiger une modification dans la méthode normale de filmage sont indiqués ci-dessous.

- Coloured covers/  
Couverture de couleur
- Covers damaged/  
Couverture endommagée
- Covers restored and/or laminated/  
Couverture restaurée et/ou pelliculée
- Cover title missing/  
Le titre de couverture manque
- Coloured maps/  
Cartes géographiques en couleur
- Coloured ink (i.e. other than blue or black)/  
Encre de couleur (i.e. autre que bleue ou noire)
- Coloured plates and/or illustrations/  
Planches et/ou illustrations en couleur
- Bound with other material/  
Relié avec d'autres documents
- Tight binding may cause shadows or distortion along interior margin/  
La reliure serrée peut causer de l'ombre ou de la distortion le long de la marge intérieure
- Blank leaves added during restoration may appear within the text. Whenever possible, these have been omitted from filming/  
Il se peut que certaines pages blanches ajoutées lors d'une restauration apparaissent dans le texte, mais, lorsque cela était possible, ces pages n'ont pas été filmées.
- Additional comments:/  
Commentaires supplémentaires:

- Coloured pages/  
Pages de couleur
- Pages damaged/  
Pages endommagées
- Pages restored and/or laminated/  
Pages restaurées et/ou pelliculées
- Pages discoloured, stained or foxed/  
Pages décolorées, tachetées ou piquées
- Pages detached/  
Pages détachées
- Showthrough/  
Transparence
- Quality of print varies/  
Qualité inégale de l'impression
- Includes supplementary material/  
Comprend du matériel supplémentaire
- Only edition available/  
Seule édition disponible
- Pages wholly or partially obscured by errata slips, tissues, etc., have been refilmed to ensure the best possible image/  
Les pages totalement ou partiellement obscurcies par un feuillet d'errata, une pelure, etc., ont été filmées à nouveau de façon à obtenir la meilleure image possible.

This item is filmed at the reduction ratio checked below/  
Ce document est filmé au taux de réduction indiqué ci-dessous.

|     |     |     |     |     |     |     |     |     |     |     |     |
|-----|-----|-----|-----|-----|-----|-----|-----|-----|-----|-----|-----|
| 10X | 12X | 14X | 16X | 18X | 20X | 22X | 24X | 26X | 28X | 30X | 32X |
|     |     |     |     |     |     |     |     | ✓   |     |     |     |

The copy filmed here has been reproduced thanks to the generosity of:

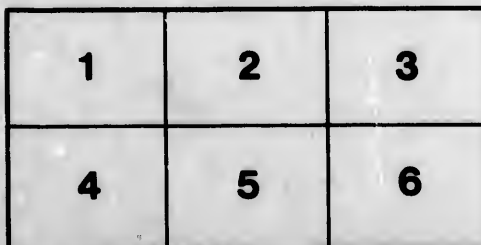
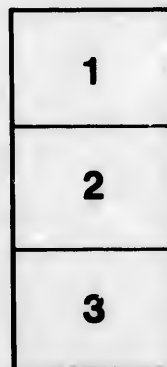
National Library of Canada

The images appearing here are the best quality possible considering the condition and legibility of the original copy and in keeping with the filming contract specifications.

Original copies in printed paper covers are filmed beginning with the front cover and ending on the last page with a printed or illustrated impression, or the back cover when appropriate. All other original copies are filmed beginning on the first page with a printed or illustrated impression, and ending on the last page with a printed or illustrated impression.

The last recorded frame on each microfiche shall contain the symbol  $\rightarrow$  (meaning "CONTINUED"), or the symbol  $\nabla$  (meaning "END"), whichever applies.

Maps, plates, charts, etc., may be filmed at different reduction ratios. Those too large to be entirely included in one exposure are filmed beginning in the upper left hand corner, left to right and top to bottom, as many frames as required. The following diagrams illustrate the method:



L'exemplaire filmé fut reproduit grâce à la générosité de:

Bibliothèque nationale du Canada

Les images suivantes ont été reproduites avec le plus grand soin, compte tenu de la condition et de la netteté de l'exemplaire filmé, et en conformité avec les conditions du contrat de filmage.

Les exemplaires originaux dont la couverture en papier est imprimée sont filmés en commençant par le premier plat et en terminant soit par la dernière page qui comporte une empreinte d'impression ou d'illustration, soit par le second plat, selon le cas. Tous les autres exemplaires originaux sont filmés en commençant par la première page qui comporte une empreinte d'impression ou d'illustration et en terminant par la dernière page qui comporte une telle empreinte.

Un des symboles suivants apparaîtra sur la dernière image de chaque microfiche, selon le cas: le symbole  $\rightarrow$  signifie "A SUIVRE", le symbole  $\nabla$  signifie "FIN".

Les cartes, planches, tableaux, etc., peuvent être filmés à des taux de réduction différents. Lorsque le document est trop grand pour être reproduit en un seul cliché, il est filmé à partir de l'angle supérieur gauche, de gauche à droite, et de haut en bas, en prenant le nombre d'images nécessaire. Les diagrammes suivants illustrent la méthode.

X.—*Results of Experiments in Tree-planting on the Northwest Plains.*

By WM. SAUNDERS, F.L.S., F.C.S., Director Experimental Farms.

(Read May 25, 1894.)

Six years ago the testing of trees and shrubs suitable for planting on the Northwest plains was begun at the experimental farms at Brandon, Manitoba, and at Indian Head, N.W.T. In no other part of the Dominion do the inhabitants manifest so much interest in tree-planting, and in order that the fullest information might be available to guide the settlers in their efforts in tree-growing, a large number of varieties from the eastern provinces and from Europe were included in the tests. It was expected that many of these would prove tender, and the expectations in this particular have been fully realized. The tests in most cases have been very thorough, and by disseminating information regarding these failures much good has been done in deterring lovers of trees from wasting their money in useless attempts to grow tender things.

In 1889, 12,000 forest trees and shrubs were sent from the central experimental farm at Ottawa to each of the branch farms in the west. These consisted of 118 varieties, of which about 60 per cent died before the following spring. In 1890 another consignment of about 21,000 was sent, of which a considerable number proved tender. Further supplies have been forwarded each year since, and by persevering effort the failures in the shelter-belts and plantations have gradually been made good by replanting with hardier sorts.

A very large number of native trees have been grown both on the branch farms and at the central farm from seed, especially of the box-elder (*Negundo aceroides*), elm (*Ulmus Americana*), ash (*Fraxinus viridis*), and oak (*Quercus macrocarpa*), and these are succeeding admirably. Several varieties of Russian poplars and willows have also done remarkably well, particularly *P. bereolensis*, *P. certinensis* and the Voronesh willow. These have proven quite as hardy as any of the natives and more rapid in their growth, and as they root readily from cuttings they have been much multiplied in that way, not only on the experimental farms but also among the settlers in different parts of the country. The success which has attended the growth of trees on the experimental farms has awakened increased interest in this subject and created a demand for trees which is increasing every year. As the result of the work of from five to six years there are now growing on the branch farm at Indian Head about 120,000 trees and shrubs, and about 75,000 on the branch farm at Brandon. These are planted so as to form avenues, clumps, shelter-belts and hedges. A belt 100 feet wide, with trees five feet apart each way, has been planted on the farm at Brandon along the west boundary for about a mile, and on the Indian Head farm a belt of similar width along both the west and north boundaries for about one and three-quarter miles.

Early in 1890 it was announced in several of the Northwest newspapers that packages

of young seedling forest trees containing 100 in each package would be sent from the central experimental farm at Ottawa as long as the supply lasted to any farmer or settler applying for them. Material had been secured sufficient for 1,000 packages, which it was supposed would be ample to meet the demand, but within a month after the announcement was made 2,600 applications had been received. As it was not possible then to meet the wishes of all, 1,000 packages were sent out to those who had applied earliest, and the names of the others were held over until the following year, when a more liberal provision was made and all were supplied, including applications subsequently received, altogether about 2,000. Ninety-five larger bundles were also sent by express to the Canadian Pacific Railway test gardens at different points along the line, to the agents on the Indian reserves, the Mounted Police stations, and other public institutions. A similar distribution of about 1,000 packages each was also made in 1892 and 1893. As the material for distribution has greatly increased on the branch farms, it has been thought best to encourage the settlers to apply there instead of sending to Ottawa. No announcement has been made during the past season of any distribution at Ottawa, but it has been found necessary to put up about 600 mail packages in order to meet the pressing requests received.

During the past four years a large quantity of tree seeds have also been distributed free by mail, mainly of such native varieties as could be obtained in the Northwest. Within this period more than five tons of such seeds have been collected and sent out in small bags, each containing from 3,000 to 5,000 seeds. These seeds have been accompanied by instructions for sowing and subsequent care. In 1891 tree seeds were thus sent to about 5,000 settlers. A large proportion of those who have received them have been successful in growing them, and from the seedling-beds the young trees have been planted in groves around the houses and buildings on a large number of farms. Many of these in four or five years will bear seed and become additional centres of distribution, which in a few years more will produce marked and gratifying results.

The planting of hardy young trees closely for shelter-hedges has been found most advantageous and beneficial, forming excellent protection for the growing of small fruits, vegetables and other tender or succulent crops. These hedges have been made chiefly of Russian poplars, box-elder, elm, ash and willow, planted in double rows at different distances, 1 ft. by 2, 2 by 2, 2 by 3, 3 by 3, and 4 by 4 ft. The Russian poplars have thus far made the most rapid and desirable growth. A Russian variety of *Artemisia*, *Artemisia Abrotanum* var. *Tobolskianum*, has also been found useful for this purpose on account of its ready and rapid growth from cuttings. The *Caragana arborescens*, or Siberian pea-tree, which can be readily grown from seed, also makes a very good hedge. In addition to the shelter which these hedges afford, they are beneficial in collecting and retaining the snow in winter, and thus producing favourable conditions of moisture in the spring. The tests which have been made on the western experimental farms have shown that there are now about 100 varieties of trees and shrubs which are hardy enough to endure the climate there and thrive well, and further tests are adding to this number from year to year. The example shown, the information given, and the facilities afforded for obtaining and disseminating cuttings and seeds from the large groves planted, will undoubtedly be the means of bringing about a rapid extension of this desirable work.

