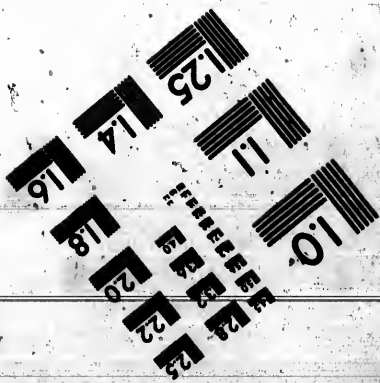
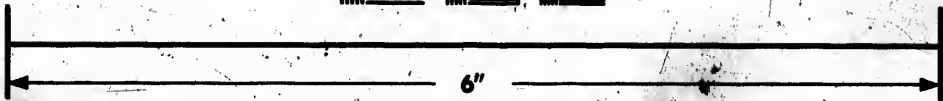
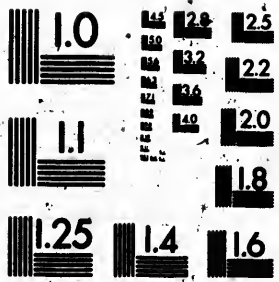


**IMAGE EVALUATION
TEST TARGET (MT-3)**



**Photographic
Sciences
Corporation**

23 WEST MAIN STREET
WEBSTER, N.Y. 14580
(716) 873-4503

Can

**CIHM
Microfiche
Series
(Monographs)**

**ICMH
Collection de
microfiches
(monographies)**



Canadian Institute for Historical Microreproductions / Institut canadien de microreproductions historiques

© 1991

Technical and Bibliographic Notes / Notes techniques et bibliographiques

The Institute has attempted to obtain the best original copy available for filming. Features of this copy which may be bibliographically unique, which may alter any of the images in the reproduction, or which may significantly change the usual method of filming, are checked below.

L'Institut a microfilmé le meilleur exemplaire qu'il lui a été possible de se procurer. Les détails de cet exemplaire qui sont peut-être uniques du point de vue bibliographique, qui peuvent modifier une image reproduite, ou qui peuvent exiger une modification dans la méthode normale de filmage sont indiqués ci-dessous.

- Coloured covers/
Couverture de couleur
- Covers damaged/
Couverture endommagée
- Covers restored and/or laminated/
Couverture restaurée et/ou pelliculée
- Cover title missing/
Le titre de couverture manque
- Coloured maps/
Cartes géographiques en couleur
- Coloured ink (i.e. other than blue or black)/
Encre de couleur (i.e. autre que bleue ou noire)
- Coloured plates and/or illustrations/
Planches et/ou illustrations en couleur
- Bound with other material/
Relié avec d'autres documents
- Tight binding may cause shadows or distortion along interior margin/
La reliure serrée peut causer de l'ombre ou de la distorsion le long de la marge intérieure
- Blank leaves added during restoration may appear within the text. Whenever possible, these have been omitted from filming/
Il se peut que certaines pages blanches ajoutées lors d'une restauration apparaissent dans le texte, mais, lorsque cela était possible, ces pages n'ont pas été filmées.
- Additional comments:
Commentaires supplémentaires:

- Coloured pages/
Pages de couleur
- Pages damaged/
Pages endommagées
- Pages restored and/or laminated/
Pages restaurées et/ou pelliculées
- Pages discoloured, stained or foxed/
Pages décolorées, tachetées ou piquées
- Pages detached/
Pages détachées
- Showthrough/
Transparence
- Quality of print varies/
Qualité inégale de l'impression
- Continuous pagination/
Pagination continue
- Includes index(es)/
Comprend un (des) index
- Title on header taken from:
Le titre de l'en-tête provient:
- Title page of issue/
Page de titre de la livraison
- Caption of issue/
Titre de départ de la livraison
- Masthead/
Générique (périodiques) de la livraison

This item is filmed at the reduction ratio checked below/
Ce document est filmé au taux de réduction indiqué ci-dessous.

10X	12X	14X	16X	18X	20X	22X	24X	26X	28X	30X	32X
<input type="checkbox"/>	<input type="checkbox"/>	<input type="checkbox"/>	<input type="checkbox"/>	<input type="checkbox"/>	<input type="checkbox"/>	<input type="checkbox"/>	<input type="checkbox"/>	<input type="checkbox"/>	<input type="checkbox"/>	<input checked="" type="checkbox"/>	<input type="checkbox"/>

The copy filmed here has been reproduced thanks to the generosity of:

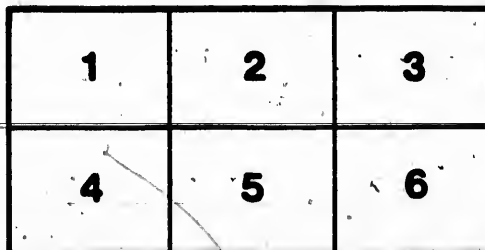
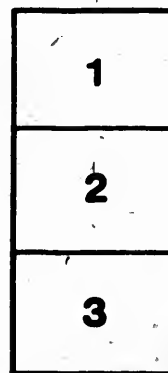
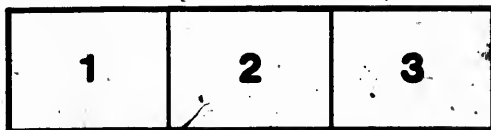
Library of the National Archives of Canada

The images appearing here are the best quality possible considering the condition and legibility of the original copy and in keeping with the filming contract specifications.

Original copies in printed paper covers are filmed beginning with the front cover and ending on the last page with a printed or illustrated impression, or the back cover when appropriate. All other original copies are filmed beginning on the first page with a printed or illustrated impression, and ending on the last page with a printed or illustrated impression.

The last recorded frame on each microfiche shall contain the symbol \rightarrow (meaning "CONTINUED"), or the symbol ∇ (meaning "END"), whichever applies.

Maps, plates, charts, etc., may be filmed at different reduction ratios. Those too large to be entirely included in one exposure are filmed beginning in the upper left hand corner, left to right and top to bottom, as many frames as required. The following diagrams illustrate the method:



L'exemplaire filmé fut reproduit grâce à la générosité de:

Le bibliothèque des Archives nationales du Canada

Les images suivantes ont été reproduites avec le plus grand soin, compte tenu de la condition et de la netteté de l'exemplaire filmé, et en conformité avec les conditions du contrat de filmage.

Les exemplaires originaux dont la couverture en papier est imprimée sont filmés en commençant par le premier plat et en terminant soit par la dernière page qui comporte une empreinte d'impression ou d'illustration, soit par le second plat, selon le cas. Tous les autres exemplaires originaux sont filmés en commençant par la première page qui comporte une empreinte d'impression ou d'illustration et en terminant par la dernière page qui comporte une telle empreinte.

Un des symboles suivants apparaîtra sur la dernière image de chaque microfiche, selon le cas: le symbole \rightarrow signifie "A SUIVRE", le symbole ∇ signifie "FIN".

Les cartes, planches, tableaux, etc., peuvent être filmés à des taux de réduction différents. Lorsque le document est trop grand pour être reproduit en un seul cliché, il est filmé à partir de l'angle supérieur gauche, de gauche à droite, et de haut en bas, en prenant le nombre d'images nécessaire. Les diagrammes suivants illustrent la méthode.

GRAND TRUNK RAILWAY OF CANADA.

SPECIFICATION AND CONDITIONS OF CONTRACT

FOR THE

SUPPLY OF NEW WHEELS, AND THE PURCHASE OF OLD OR SCRAP WHEELS.

1.—The Contractor to supply all the Cast Iron Chilled Wheels for Engines and Cars required for use at Montreal during the term of three years, commencing 1st of January 1879, and to deliver same on the Company's premises at Point St. Charles from time to time in such numbers as may be required.

2.—The Wheels are to be subject to the approval of the Mechanical Superintendent of the Company, and must be made of cold blast charcoal iron, of Salisbury or equal and approved quality, to the tracings furnished by the Company.

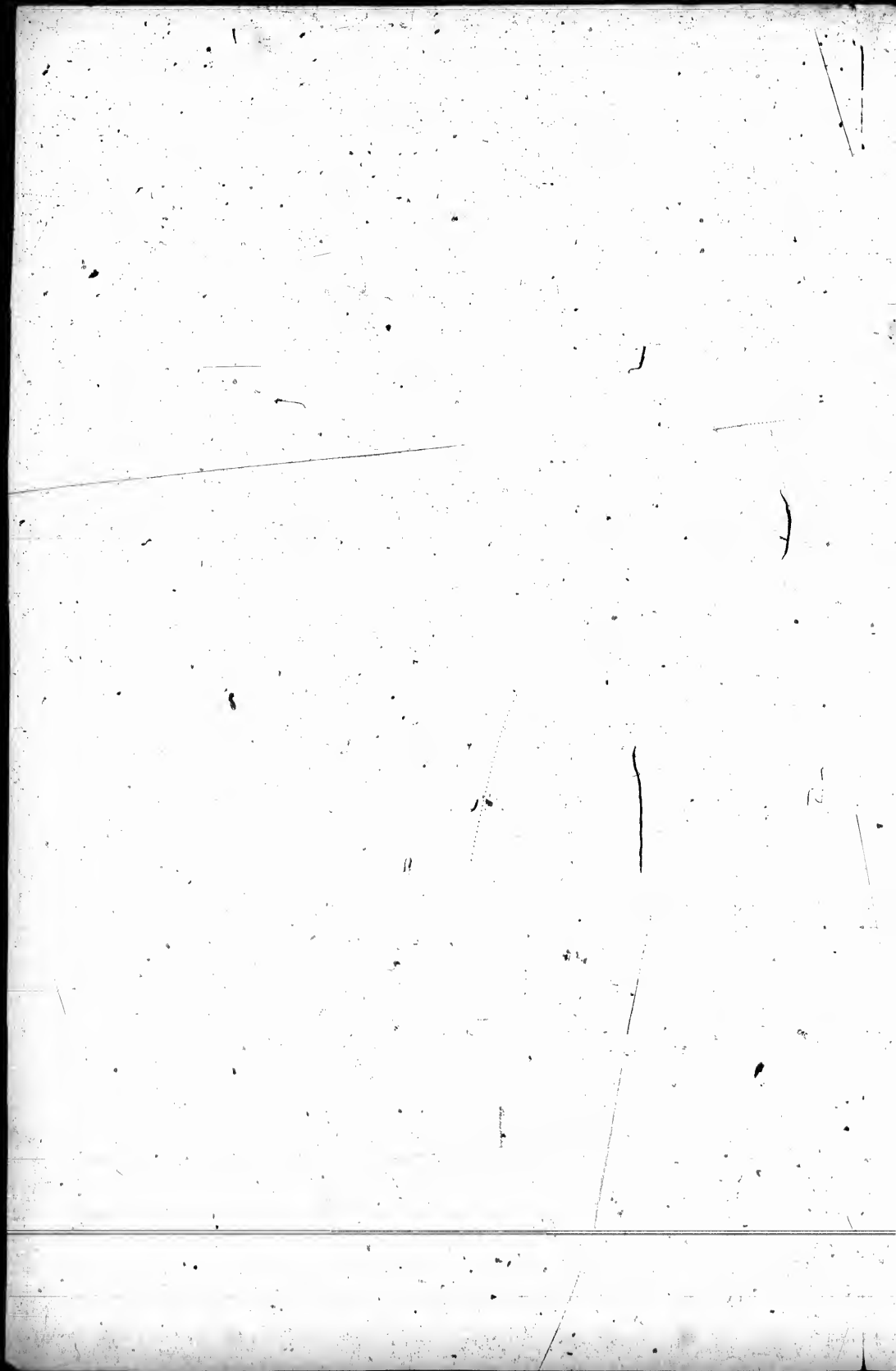
3.—The Mechanical Superintendent of the Company, or his Agent, shall have the right to examine the Wheels during their construction, and also the invoices of materials used in their manufacture, for the purpose of verifying the quality of the same.

4.—The Wheels to be guaranteed to run one year in good order. The Contractor to remove and replace defective Wheels with new Wheels, subject to a like guarantee, and without charge to the Company.

5.—The Contractor to take all the old Wheels which the Company may wish to dispose of during the term of the Contract at the price of twenty-two dollars and forty cents (\$22.40) per ton of 2,240 lbs., not exceeding in weight that of the new Wheels supplied. The old Wheels to be taken by the Contractor at his expense from the Company's premises at Point St. Charles.

6.—Terms of payment :—four months.

7.—The Contractor to give such security as shall be acceptable for the fulfilment of the Contract.



hereby tender to supply the Grand Trunk Railway Company with all the Cast Iron Chilled Wheels for Engines and Cars which they may require to use in Montreal, in accordance with the foregoing specification and conditions of contract, at the following prices per Wheel: The Wheels to be made of iron from

Diam.		Weight, (about) lbs.	Price.
28 inches.	Narrow Tread.	450	
30	" "	490	
33	" "	530	
33	Broad Tread,	550	
36	Narrow "	600	
36	Broad "	635	
42	Narrow "	800	
42	Broad "	840	

The Wheels to be made with the various projections or recesses on the face or back of hub as may be called for.

And I agree to supply any other sizes or description of Wheels, at the average price per lb. of the above.

And I offer the following security for the fulfilment of the Contract, viz:--

To

JOSEPH HICKSON, ESQ.,

General Manager.

