

**CIHM
Microfiche
Series
(Monographs)**

**ICMH
Collection de
microfiches
(monographies)**



Canadian Institute for Historical Microreproductions / Institut canadien de microreproductions historiques

© 1997

Technical and Bibliographic Notes / Notes techniques et bibliographiques

The Institute has attempted to obtain the best original copy available for filming. Features of this copy which may be bibliographically unique, which may alter any of the images in the reproduction, or which may significantly change the usual method of filming are checked below.

- Coloured covers / Couverture de couleur
- Covers damaged / Couverture endommagée
- Covers restored and/or laminated / Couverture restaurée et/ou pelliculée
- Cover title missing / Le titre de couverture manque
- Coloured maps / Cartes géographiques en couleur
- Coloured ink (i.e. other than blue or black) / Encre de couleur (i.e. autre que bleue ou noire)
- Coloured plates and/or illustrations / Planches et/ou illustrations en couleur
- Bound with other material / Relié avec d'autres documents
- Only edition available / Seule édition disponible
- Tight binding may cause shadows or distortion along interior margin / La reliure serrée peut causer de l'ombre ou de la distorsion le long de la marge intérieure.
- Blank leaves added during restorations may appear within the text. Whenever possible, these have been omitted from filming / Il se peut que certaines pages blanches ajoutées lors d'une restauration apparaissent dans le texte, mais, lorsque cela était possible, ces pages n'ont pas été filmées.
- Additional comments / Commentaires supplémentaires:

L'Institut a microfilmé le meilleur exemplaire qu'il lui a été possible de se procurer. Les détails de cet exemplaire qui sont peut-être uniques du point de vue bibliographique, qui peuvent modifier une image reproduite, ou qui peuvent exiger une modification dans la méthode normale de filmage sont indiqués ci-dessous.

- Coloured pages / Pages de couleur
- Pages damaged / Pages endommagées
- Pages restored and/or laminated / Pages restaurées et/ou pelliculées
- Pages discoloured, stained or foxed / Pages décolorées, tachetées ou piquées
- Pages detached / Pages détachées
- Showthrough / Transparence
- Quality of print varies / Qualité inégale de l'impression
- Includes supplementary material / Comprend du matériel supplémentaire
- Pages wholly or partially obscured by errata slips, tissues, etc., have been refilmed to ensure the best possible image / Les pages totalement ou partiellement obscurcies par un feuillet d'errata, une pelure, etc., ont été filmées à nouveau de façon à obtenir la meilleure image possible.
- Opposing pages with varying colouration or discolourations are filmed twice to ensure the best possible image / Les pages s'opposant ayant des colorations variables ou des décolorations sont filmées deux fois afin d'obtenir la meilleure image possible.

This item is filmed at the reduction ratio checked below /
Ce document est filmé au taux de réduction indiqué ci-dessous.

10x		14x		18x		22x		26x		30x	
<input type="checkbox"/>	<input type="checkbox"/>	<input type="checkbox"/>	<input type="checkbox"/>	<input type="checkbox"/>	<input type="checkbox"/>	<input type="checkbox"/>	<input type="checkbox"/>	<input checked="" type="checkbox"/>	<input type="checkbox"/>	<input type="checkbox"/>	<input type="checkbox"/>
	12x		16x		20x		24x		28x		32x

The copy filmed here has been reproduced thanks to the generosity of:

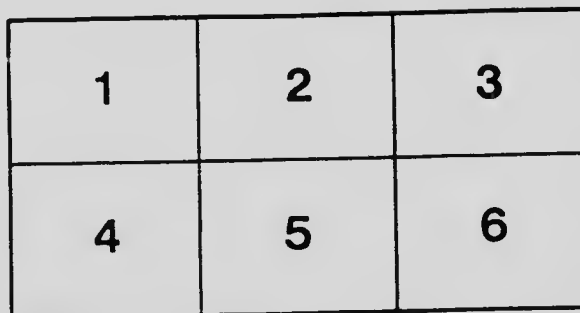
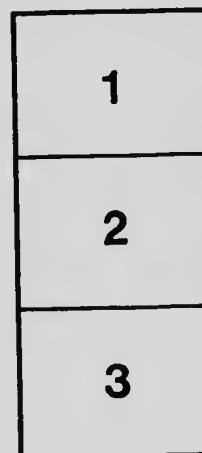
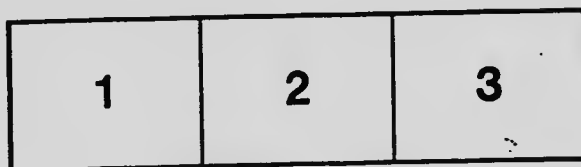
Library
Agriculture Canada

The images appearing here are the best quality possible considering the condition and legibility of the original copy and in keeping with the filming contract specifications.

Original copies in printed paper covers are filmed beginning with the front cover and ending on the last page with a printed or illustrated impression, or the back cover when appropriate. All other original copies are filmed beginning on the first page with a printed or illustrated impression, and ending on the last page with a printed or illustrated impression.

The last recorded frame on each microfiche shall contain the symbol \rightarrow (meaning "CONTINUED"), or the symbol ∇ (meaning "END"), whichever applies.

Maps, plates, charts, etc., may be filmed at different reduction ratios. Those too large to be entirely included in one exposure are filmed beginning in the upper left hand corner, left to right and top to bottom, as many frames as required. The following diagrams illustrate the method:



L'exemplaire filmé fut reproduit grâce à la générosité de:

Bibliothèque
Agriculture Canada

Les images suivantes ont été reproduites avec le plus grand soin, compte tenu de la condition et de la netteté de l'exemplaire filmé, et en conformité avec les conditions du contrat de filmage.

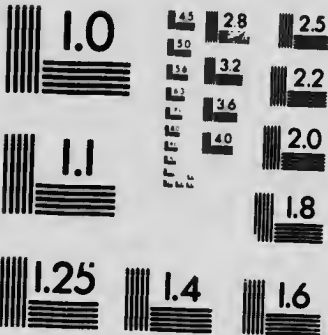
Les exemplaires originaux dont la couverture en papier est imprimée sont filmés en commençant par le premier plat et en terminant soit par la dernière page qui comporte une empreinte d'impression ou d'illustration, soit par le second plat, selon la cas. Tous les autres exemplaires originaux sont filmés en commençant par la première page qui comporte une empreinte d'impression ou d'illustration et en terminant par la dernière page qui comporte une telle empreinte.

Un des symboles suivants apparaîtra sur la dernière image de chaque microfiche, selon le cas: le symbole \rightarrow signifie "A SUIVRE", le symbole ∇ signifie "FIN".

Les cartes, planches, tableaux, etc., peuvent être filmés à des taux de réduction différents. Lorsque le document est trop grand pour être reproduit en un seul cliché, il est filmé à partir de l'angle supérieur gauche, de gauche à droite, et de haut en bas, en prenant le nombre d'images nécessaire. Les diagrammes suivants illustrent la méthode.

MICROCOPY RESOLUTION TEST CHART

(ANSI and ISO TEST CHART No. 2)



APPLIED IMAGE Inc

1653 East Main Street
Rochester, New York 14609 USA
(716) 482 - 0300 - Phone
(716) 288 - 5989 - Fax

PROVINCE OF BRITISH COLUMBIA

DEPARTMENT OF AGRICULTURE
(STATISTICS BRANCH)

AGRICULTURAL STATISTICS, 1919

BULLETIN No. 84



PRINTED BY
AUTHORITY OF THE LEGISLATIVE ASSEMBLY.

VICTORIA, B.C.:
Printed by WILLIAM H. CULLIN, Printer to the King's Most Excellent Majesty,
1920.

DEPARTMENT OF AGRICULTURE,

VICTORIA, B.C., May 3rd, 1920.

To Colonel the Honourable EDWARD GAWLER PRIOR,

A Member of the King's Privy Council for Canada,

Lieutenant-Governor of the Province of British Columbia.

MAY IT PLEASE YOUR HONOUR:

I have the honour to submit herewith Bulletin No. 84, entitled "Agricultural Statistics, 1919," which has been compiled by G. H. Stewart, Statistician, Department of Agriculture, under the direction of Dr. D. Warnock, O.B.E., Deputy Minister.

I have the honour to be,

Sir,

Your obedient servant,

E. D. BARROW,

Minister of Agriculture.

DEPARTMENT OF AGRICULTURE,
VICTORIA, B.C., May 3rd, 1920.

Hon. E. D. Barrow.

Minister of Agriculture, Victoria, B.C.

SIR,—I have the honour to submit herewith for your approval Bulletin No. 84, entitled "Agricultural Statistics, 1919," which has been compiled by G. H. Stewart, Statistician, Department of Agriculture.

I have the honour to be,

Sir,

Your obedient servant,

D. WARNOCK, O.B.E.,

Deputy Minister of Agriculture.

TABLE OF CONTENTS.

	Page.
Introduction	0
Synopsis of Agricultural Production, Reports, etc.	7
Production—	
Table No. 1—Agricultural Production (Quantities and Values), Years 1918-19	9
Table No. 2—Production and Imports (Values only), Years 1918-19	10
Table No. 3—Production and Imports (Total Value), Years 1900-19	10
Table No. 4—Crop Areas, Yields, and Values, Years 1914-18-19	11
Table No. 5—Cans of Fruit produced, Years 1917-18-19	12
Table No. 6—Average Net Weights, Fruits and Vegetables	13
Table No. 7—Fruit Production, Various Districts (Packages and Value), Years 1916-17-18-19	14
Table No. 8—Fruit Production (Tons and Value), Years 1917-18-19	21
Table No. 9—Apiaries and Honey-crop, Year 1919	22
Express Shipments—	
Table No. 10—Express Shipments, Fruits and Vegetables (Total Packages and Weights), Years 1911-19	23
Table No. 11—Express Shipments, Fruits and Vegetables, by Districts (Weights only), Years 1915-19	23
Live Stock—	
Table No. 12—Numbers of Farm Live Stock, Years 1917-18-19	25
Imports—	
Table No. 13—Imports from other Provinces in Canada, Years 1917-18-19	26
Table No. 14—Imports from Foreign Ports, Years 1917-18-19	27
Table No. 15—Imported Fruit and Vegetables Inspected and Condemned, Years 1917-18-19	28
Table No. 16—Imported Nursery Stock Inspected and Condemned, Years 1917-18-19	29
Meteorological—	
Table No. 17—Precipitation, Years 1918-19 (In Inches)	31
Table No. 18—Precipitation (Rainfall and Snowfall), Years 1918-19	34
Table No. 19—Highest and Lowest Temperatures, Years 1918-19	35
Farm Tractors—	
Table No. 20—Numbers of Farm Tractors in 1919	35

ACKNOWLEDGMENTS.

Grateful acknowledgments are tendered to the following for valuable co-operation in supplying data contained in this bulletin: Various produce merchants for data relating to imports from other Provinces in Canada; Dominion Express Company and Canadian National Express Company for data showing express movements of fruits and vegetables; F. Napier Denison, Superintendent, Meteorological Observatory, British Columbia for meteorological data; and Department of Customs, Ottawa, for statements relating to imports from foreign points.

INTRODUCTION.



THIS bulletin contains statistics of the agricultural industries of the Province of British Columbia. These statistics relate to areas of land under crop and under cultivation; production of the various crops; animals, animal products, and climate as affecting agriculture. Included also are statements relating to express movements of fruits and vegetables and imports of all agricultural food products.

The data shown for 1917, 1918, and 1919 relating to the areas of field crops and numbers of live stock were determined by means of a postal census in June, taken through the joint efforts of the Dominion and Provincial Governments.

The total number of farmers, or separate farms, in the Province, according to a registration taken in 1918 by the Dominion Registration Board, was 15,146. This total does not include farmers' sons. Of the total farmers, 58 per cent. responded to the inquiries sent out. The percentage of returns received this year stands higher than from any other Province in the Dominion and the highest on record in British Columbia.

It appears from the returns received that the farmers of this Province are beginning to realize the importance of rendering full and accurate returns to this office, and it is only a matter of a short time until this work will bear the desired results in the Province of British Columbia.

AGRICULTURAL STATISTICS, 1919.

SYNOPSIS OF AGRICULTURAL CONDITIONS IN BRITISH COLUMBIA, YEAR 1919.

As far as the agricultural industry in the Province of British Columbia is concerned, the year 1919 was the most successful year on record. The total agricultural production was \$45,384,550, as against \$40,444,308 for the year 1918, representing an increase in the total value of 32.23 per cent. over the previous year and 717.30 per cent. over the year 1900, when statistics were first collected in British Columbia.

This large increase may to some extent be attributed to the prevailing high prices, yet a general increase may be noted in practically all branches of agriculture, more particularly as it relates to meats, poultry, fruits, fodders, and grains.

Although total imports of food products into British Columbia show an increase of 3.78 per cent. in 1919, this increase is due to the increased prices, as the actual quantity imported shows considerable reduction over the previous year.

While figures are not available showing exports, the total value is estimated to have been \$7,000,000, as against \$5,000,000 in 1918, or an increase for the year of 40 per cent. The exports consisted chiefly of fruits and vegetables.

FRUITS.

The fruit-crop was the largest on record. Apples and other tree-fruits produced well, while returns were most satisfactory. The production of apples alone was 94.37 per cent. greater than in 1918, while the increase in other tree-fruits was 5.23 per cent. greater. The greatest increases are to be noted in cherries, apricots, plums, and prunes. The peach-crop shows considerable reduction, through loss occasioned by early frost.

Small fruits showed a gain of 34.45 per cent. for the year. The outstanding increases occurred in strawberries, raspberries, and blackberries. The total production of all fruits exceeded the production in 1918 by 67.81 per cent.

VEGETABLES.

The acreage of potatoes increased 19.80 per cent. over the year 1918. The yield, however, was 11.86 per cent. less, caused chiefly through drought during the summer. A further loss was occasioned by frosts after the crop was harvested.

A marked decrease occurred in the yield of tomatoes, especially in the Okanagan Valley; this loss was due to early frosts. Greenhouse tomatoes, however, showed a large increase in production, which, together with the high prices received, increased the value of production from \$52.11 per ton in 1918 to \$113.76 per ton in 1919.

The area in root-crops shows an increase of 10.92 per cent. over 1918.

GRAINS.

The area of grain for threshing in 1919 increased 27.92 per cent. over the year 1918, whilst the total yield increased 38.68 per cent. Owing to unfavourable weather during the summer a larger percentage than usual was cut green or turned into hay, thus reducing the quantity of grain for threshing considerably. The area of fall wheat and oats shows a large increase over 1918. The prices for all grains averaged much higher than in 1918, resulting in an increase of 48.63 per cent. in total value.

FODDERS.

The area sown to fodders increased 24.61 per cent. over 1918. Unfavourable weather again accounted for a marked decrease in the yield of clover and timothy.

The area of grain-hay increased 14.40 per cent. over 1918; this was due largely to so much grain being cut green or turned into hay to relieve the shortage resulting from the failure of the clover and timothy crops.

Fodder corn, while still comprising a small percentage of the total acreage of fodders, also showed considerable increase, both in acreage and yield. Clover and timothy averaged \$35.25, as against \$33.25 in 1918.

LIVE STOCK.

Horses decreased in numbers 414, due chiefly to the increased use of motors in the Province.

Beef and dairy cattle showed but a slight increase over the year 1918.

Owing to the large number of sheep marketed during the year the numbers decreased slightly below the year 1918.

Swine increased in numbers 12.95 per cent. during the year.

Poultry and eggs show a most satisfactory increase, both as regards quantity and value. The numbers of poultry increased 17.88 per cent. The quantity of eggs produced shows an increase of 26.44 per cent. over 1918.

MEATS.

The total quantity of all meats marketed during the year increased 8.99 per cent. The total value shows an increase of 18.43 per cent. over 1918. Pork and pork products showed the greatest gain, while mutton also showed a considerable increase.

DAIRY PRODUCTS.

The total quantity of butter manufactured increased 2.56 per cent. for the year.

The total quantity of cheese manufactured in the Province shows a steady increase. The total quantity manufactured during 1919 was 304,502 lb., as against 250,674 lb. in 1918, an increase of 21.47 per cent.

The total increase in the value of all dairy products for the year was 23.31 per cent.

G. H. STEWART,
Statistician.

May 3rd, 1920.

PRODUCTION.

TABLE No. 1.—AGRICULTURAL PRODUCTION, BRITISH COLUMBIA, YEARS 1918-19.

Description.	1918.		1919.	
	Quantity.	Value.	Quantity.	Value.
Horses No.	\$ 1,651,069	\$ 2,214,850
Beef cattle "	6,532,540	8,318,820
Dairy cattle "	679,365	719,760
Sheep "	835,905	1,034,080
Swine "	150,000
Goats "
Total live stock	\$ 9,608,879	\$12,437,510
Beef and veal..... lb.	16,250,000	\$ 2,625,000	16,500,000	\$ 2,937,000
Pork and pork products	1,680,000	450,000	2,000,000	700,350
Mutton	255,000	75,000	420,000	93,450
Total meats	18,185,000	\$ 3,150,000	19,820,000	\$ 3,730,800
Poultry lb.	3,030,772	\$ 971,447	4,133,573	\$ 1,446,750
Eggs doz.	3,155,691	1,672,516	3,990,075	2,394,045
Total poultry products	\$ 2,643,963	\$ 3,840,795
Butter lb.	2,260,386	\$ 1,114,997	2,318,290	\$ 1,376,497
Cheese	250,674	67,682	304,502	88,305
Milk (as fresh) gals.	10,516,354	4,335,863	9,470,377	3,977,558
Milk (evaporated and sterilized), cases	243,215	1,362,004
Total dairy products.....	\$ 5,518,042	\$ 6,804,364
Apples lb.	57,775,490	\$ 2,415,887	112,303,700	\$ 4,861,302
Other tree-fruits	21,407,967	1,172,411	22,528,200	1,440,192
Small fruits	5,846,064	826,862	7,860,500	1,471,070
Total fruits	85,029,521	\$ 4,415,160	142,692,400	\$ 7,772,474
Potatoes tons	102,690	\$ 3,320,300	91,800	\$ 3,061,530
Other vegetables	103,732	3,255,553	110,211	4,340,665
Total vegetables	206,422	\$ 6,575,853	202,011	\$ 7,411,195
Hay (clover and timothy)..... tons	217,400	\$ 7,228,600	180,376	\$ 6,675,504
Other fodders	178,684	4,235,074	336,026	8,336,729
Total fodders	396,084	\$11,463,674	525,402	\$15,012,233
Grains hu.	2,778,904	\$ 4,096,686	3,853,909	\$ 6,088,913
Honey lb.	450,000	\$ 126,000	344,580	\$ 103,374
Wool	300,000	180,000	310,000	186,000
Hops	337,440	202,464
Tobacco	93,000	18,600
Goats' milk gals.	75,000	45,000
Rabbits	76,051	80,834
Total miscellaneous	\$ 382,051	\$ 636,272
Indian products	\$ 1,500,000	\$ 1,650,000
Grand totals	\$49,444,308	\$65,384,556

BRITISH COLUMBIA.

TABLE No. 2.—BRITISH COLUMBIA AGRICULTURAL PRODUCTION AND IMPORTS, YEARS 1918-19 (VALUES ONLY).

Description.	Year.	Production.	Imports from other Canadian Provinces.	Imports from Foreign Points.	Total Imports.
Live stock	1918	\$ 9,698,879	\$ 2,486,802	\$ 27,300	\$ 2,514,111
Live stock	1919	12,437,510	3,418,966	52,784	3,471,750
Meats	1918	3,150,000	3,837,609	938,778	4,776,887
Meats	1919	3,730,800	2,290,527	1,180,655	3,471,182
Poultry products	1918	2,043,963	1,064,211	178,617	1,242,828
Poultry products	1919	3,840,795	834,298	428,387	1,262,683
Dairy products	1918	5,518,042	3,853,798	283,424	4,187,222
Dairy products	1919	6,804,364	3,828,728	446,500	3,775,818
Fruits	1918	4,415,190	100,313	519,315	619,628
Fruits	1919	7,772,474	43,675	701,767	745,442
Vegetables	1918	6,675,853	154,200	513,706	667,906
Vegetables	1919	7,411,195	81,495	500,123	581,618
Fodders	1918	11,463,674	742,282	168,150	910,432
Fodders	1919	16,012,233	737,248	326,977	1,064,225
Grains	1918	4,096,686	6,167,589	819,539	6,987,129
Grains	1919	6,988,013	7,676,876	597,593	8,274,469
Miscellaneous	1918	382,031	3,031	46,762	49,793
Miscellaneous	1919	636,272	8,024	79,437	87,461
Indian products	1918	1,500,000
Indian products	1919	1,650,000
Totals	1918	\$49,444,308	\$18,409,835	\$3,495,611	\$21,905,446
Totals	1919	\$65,384,356	\$18,419,837	\$4,314,313	\$22,734,150

TABLE No. 3.—BRITISH COLUMBIA AGRICULTURAL PRODUCTION AND IMPORTS (VALUES ONLY), YEARS 1909-19.

Year.	Home Production.	Imports.	Year.	Home Production.	Imports.
1909	\$ 8,000,000	\$11,110,237	1915	\$31,127,801	\$16,434,970
1910	14,398,990	15,187,227	1916	32,182,915	17,199,062
1911	21,641,928	14,699,834	1917	37,661,850	19,786,296
1912	22,269,768	15,252,022	1918	49,444,308	21,905,446
1913	26,222,033	20,070,757	1919	65,384,356	22,734,150
1914	30,184,100	25,199,125			

AGRICULTURAL STATISTICS.

TABLE No. 4.—CROP AREAS, YIELDS, AND VALUES, BRITISH COLUMBIA, YEARS 1917-18-19.

Crop.	Year.	Aeres.	Average Yield.	Total Yield.	Price.	Value.
			Bu.	Bu.		
Fall wheat	1917	3,236	31.75	102,743	\$ 1 92	\$ 197,267
	1918	7,200	24.75	178,200	2 15	383,130
	1919	12,099	24.75	314,300	2 40	754,320
Spring wheat	1917	18,101	28.50	515,878	2 00	1,031,756
	1918	29,060	22.00	638,000	2 08	1,327,040
	1919	31,202	22.00	686,444	2 31	1,585,685
All wheat	1917	21,337	29.00	618,773	1 99	1,231,358
	1918	36,260	22.55	816,200	2 10	1,710,170
	1919	43,901	22.75	1,000,744	2 34	2,340,005
Oats	1917	60,234	53.75	3,237,377	90	2,913,819
	1918	39,000	39.75	1,550,250	1 00	1,550,250
	1919	45,021	47.25	2,127,242	1 07	2,276,148
Barley	1917	5,524	29.25	161,577	1 28	206,819
	1918	7,927	26.50	210,065	1 47	308,795
	1919	10,497	28.00	346,401	1 82	630,449
Rye	1917	911	28.00	25,609	1 75	45,691
	1918	820	30.00	24,600	2 07	50,922
	1919	4,911	22.50	110,497	2 46	220,833
Peas	1917	1,338	23.75	31,777	2 46	83,933
	1918	2,193	21.50	47,149	3 00	141,447
	1919	2,251	23.00	51,773	2 63	136,162
Beans	1917	2,117	15.00	31,757	6 60	209,583
	1918	2,748	18.50	50,838	4 20	213,520
	1919	1,677	17.25	28,928	3 75	108,480
Corn for husking	1917	222	35.00	7,770	3 92	30,478
	1918	325	32.00	10,400	4 35	45,240
	1919	857	35.00	29,995	4 50	134,977
Buckwheat	1917	185	20.00	3,700	1 46	5,492
	1918	80
	1919	317	21.00	6,657	1 60	10,651
Other grain-crops	1917	260
	1918	250
	1919	4,911
Flax	1917	54	6.50	351	2 65	930
	1918	325
	1919	857	6.00	5,142	4 15	21,339
Mixed grains	1917	1,850	42.50	78,625	70	55,037
	1918	3,228	21.50	69,402	1 10	76,342
	1919	4,017	36.50	146,629	1 37	200,869
Total grains ..	1917	94,032	4,198,014	\$ 4,783,030
	1918	93,196	2,778,904	4,096,686
	1919	119,217	3,853,999	6,088,913
Grain-hay	1917	18,800	2.00	37,580	\$ 15 00	\$ 568,368
	1918	25,016	2.22	55,536	26 60	1,477,258
	1919	60,900	2.50	150,975	29 00	4,378,275
Clover and timothy	1917	129,254	2.00	258,508	17 60	4,549,741
	1918	114,414	1.90	217,400	33 25	7,228,600
	1919	126,251	1.50	189,376	35 25	6,675,504
Alfalfa	1917	8,681	3.00	26,043	19 25	501,329
	1918	12,268	3.25	39,900	32 25	1,286,800
	1919	13,331	3.00	39,993	37 00	1,479,741
Wild hay	1917	32,445	1.20	38,934	15 00	584,010
	1918	43,950	1.43	62,848	20 16	1,267,016
	1919	40,528	1.66	67,276	22 97	1,545,329
Fodder corn	1917	2,239	7.00	15,673	15 00	235,095
	1918	2,016	10.10	20,400	10 00	204,000
	1919	4,368	11.50	50,232	12 00	602,784
Kale and rape	1917	1,810	20.00	36,200	8 00	289,600
	1918
	1919	1,450	19.00	27,550	12 00	330,600
Total fodders..	1917	193,310	413,138	\$ 6,749,142
	1918	197,604	396,084	11,463,674
	1919	246,318	525,402	15,012,233

BRITISH COLUMBIA.

TABLE No. 4.—CROP AREAS, YIELDS, AND VALUES, BRITISH COLUMBIA, YEARS 1917-19—Continued.

Crop.	Year.	Acres.	Average	Total Yield.	Price.	Value.
			Yield.			
Potatoes	1917	15,264	Tons.	Tons.		
	1918	15,013	5.00	76,320	\$ 23 00	\$ 1,755,360
	1919	18,000	6.84	122,888	32 33	3,320,300
Roots	1917	4,500	5.10	23,000	33 33	3,061,530
	1918	5,738	10.34	57,461	21 33	1,012,343
	1919	7,387	11.56	80,562	21 00	1,457,000
Market vegetables	1917	2,392	9.12	21,860	30 00	2,021,070
	1918	3,810	10.07	24,083	36 33	875,417
	1919	6,348	5.99	22,833	46 00	1,050,318
Rhubarb	1917	0.20	39,358	40 35	1,942,317
	1918	329	31 05	10,425
	1919	410	52 08	21,590
Tomatoes	1917	410	80 22	36,580
	1918	4,737	45 00	210,007
	1919	13,927	52 11	725,730
Total vegetables	1917	3,074	113 70	340,698
	1918	153,130	\$ 3,875,552
	1919	200,420	6,575,853
Hops	1917	333	Lb.	Lb.	\$ 0 50	\$ 134,865
	1918	810	260,730
	1919	444	760	337,440	60	202,464
Pasture meadow	1917
	1918	45,000
	1919	61,220
Fallow	1917	9,268
	1918	11,880
	1919	17,845
Total miscellaneous	1917	260,730	\$ 0 50	\$ 134,865
	1918
	1919	337,440	60	202,464

TABLE No. 5.—CARS OF FRUIT PRODUCED IN BRITISH COLUMBIA, YEARS 1917-19. (Basis.—1917-18, minimum weight per car: Apples, crab-apples, and pears, 12 tons; balance, 10 tons. 1919, minimum weight per car: Apples, crab-apples, and pears, 15 tons; balance 12 tons.)

Kind.	Year.	Islands.	Lower Mainland.	Thompson Watershed.	Okanagan and Boundary.	Kootenay.	Total Cars.
Crab-apples	1918	84.8	83.2	162.9	1,761.2	202.7	2,294.8
	1919	84.0	62.0	239.0	2,749.0	314.7	3,449.6
	1917	1.6	23.3	236.6	3.5	265.0
Pears	1918	2.7	1.3	13.1	90.7	4.3	112.1
	1919	0.7	1.3	24.7	261.8	5.1	293.8
	1917	12.4	12.8	1.8	44.3	2.2	74.0
Peaches	1918	14.3	32.2	1.9	94.2	6.5	149.3
	1919	11.5	16.3	1.0	76.8	4.8	110.4
	1917	0.3	84.3	2.1	86.7
Plums and prunes	1918	0.3	192.9	4.0	197.2
	1919	0.2	129.1	6.0	135.3
	1917	17.3	41.2	2.1	153.1	8.8	222.5
Apricots	1918	14.3	17.8	2.8	163.3	12.1	210.3
	1919	5.6	20.9	3.4	102.5	14.9	236.7
	1917	37.5	1.1	38.6
Cherries	1918	51.5	51.1
	1919	53.8	0.7	54.5
	1917	7.1	1.3	0.4	33.2	5.3	47.3
Total tree-fruits	1918	7.9	13.9	1.0	32.3	7.7	62.8
	1919	7.5	8.4	1.6	36.8	7.0	61.3
	1917	143.6	119.7	140.5	2,942.2	81.4	3,427.4
1918	124.5	148.4	181.7	2,385.7	237.3	3,077.6	
1919	100.3	110.0	269.7	3,496.8	352.6	4,341.6	

TABLE No. 5.—CARS OF FRUIT PRODUCED IN BRITISH COLUMBIA, YEARS 1917-18-19
—Continued.

Kind.	Year.	Islands.	Lower Mainland.	Thompson Watershed.	Okanagan and Boundary.	Kootenay.	Total Cars.
Strawberries	1917	34.3	33.0	1.0	16.8	86.0
	1918	32.3	33.6	1.9	1.8	17.9	107.5
	1919	33.3	48.3	1.5	2.2	29.4	115.7
Raspberries	1917	1.4	52.1	2.0	6.1	61.6
	1918	1.2	113.0	2.9	1.6	8.0	126.7
	1919	0.9	135.5	2.7	2.9	6.7	148.7
Blackberries	1917	0.3	13.1	0.2	13.6
	1918	0.4	16.7	0.3	0.7	18.1
	1919	0.4	24.3	0.2	0.3	1.0	26.2
Loganberries	1917	3.1	9.8	0.5	4.4
	1918	2.2	6.5	1.7	10.4
	1919	3.8	2.5	1.7	0.1	8.1
Bush-fruits	1917	4.4	5.3	0.7	0.9	5.5	19.8
	1918	4.3	11.1	1.3	1.8	9.5	28.0
	1919	2.5	11.9	1.9	3.2	9.0	28.5
Total small fruits...	1917	43.5	168.2	4.2	0.9	28.6	185.4
	1918	40.4	290.9	7.8	5.5	36.1	290.7
	1919	50.9	222.5	8.0	8.0	37.2	327.2
Total all fruits.....	1917	187.1	227.9	114.7	2,043.1	110.0	3,612.8
	1918	164.9	349.3	189.5	2,391.2	273.4	3,368.3
	1919	166.4	332.5	277.7	3,508.4	389.8	4,668.8

For 1918 there must be added approximately 350 car-loads of tree-fruits other than apples not otherwise provided, making a total for the Province of 3,718.3 cars.

For 1919 there must be added approximately 310 car-loads of tree-fruits other than apples not otherwise provided, making a total for the Province of 4,978.3 cars.

TABLE No. 6.—AVERAGE NET WEIGHTS PER PACKAGE, FRESH FRUITS AND VEGETABLES, YEARS 1916-17-18-19.

Description.	Package.	1916.	1917.	1918.	1919.
		Lb.	Lb.	Lb.	Lb.
Apples	Box	43	43	41	41
Crab-apples	"	45	45	40	37
Pears	"	45	45	44	42
Plums	Crate	20	20	..	17
Prunes	"	18	18	..	16
Peaches	"	18	18	19	19
Apricots	"	21	21	20	20
Cherries	"	16	16	16	16
Strawberries (pints)	"	18	18	17	16
Raspberries (pints)	"	18	18	15	15
Raspberries (2/3 quarts)	"	14	14	15	15
Blackberries (pints)	"	18	18	16	16
Blackberries (2/3 quarts)	"	14	14	16	16
Loganberries (pints)	"	16	16	16	16
Loganberries (2/3 quarts)	"	12	12	16	16
Bush-fruits	"	18	18	17	17
Grapes	"	18	18	..	16
Rhubarb	"	40	40	40	40
Tomatoes	"	25	25	..	17

AVERAGE TONS PER CAR-LOAD, YEARS 1916-17-18-19.

Potatoes	18
Field roots	20
Market-garden	12
Other vegetables	15
Rhubarb	15
Tomatoes	12

BRITISH COLUMBIA.

TABLE No. 7.—FRUIT PRODUCTION, VARIOUS DISTRICTS, BRITISH COLUMBIA,
YEARS 1916-19.

APPLES.

District.	Year.	Packages.	Value.
Islands	1916	69,813	\$ 62,882
	1917	58,564	85,846
	1918	49,080	79,488
	1919	61,467	109,510
Lower Mainland	1916	31,833	30,241
	1917	35,971	59,359
	1918	48,704	73,054
	1919	46,050	53,293
Thompson	1916	24,000	28,800
	1917	63,000	78,750
	1918	65,377	155,264
	1919	174,878	293,700
Okanagan and Boundary	1916	1,103,118	1,139,475
	1917	1,312,804	1,627,877
	1918	1,030,986	1,826,350
	1919	2,011,451	3,092,912
East and West Kootensy	1916	61,216	52,034
	1917	32,582	42,082
	1918	118,703	185,069
	1919	230,286	407,038
Totals.....	1916	1,289,080	\$1,313,382
	1917	1,502,921	1,887,514
	1918	1,343,450	2,319,227
	1919	2,524,132	4,550,453

CRAB-APPLES.

Islands	1916
	1917	914	\$ 1,097
	1918	823	1,317
	1919	539	1,325
Lower Mainland	1916
	1917
	1918	815	1,222
	1919	1,200	2,400
Thompson	1916
	1917	13,000	13,000
	1918	7,863	9,236
	1919	20,000	21,400
Okanagan and Boundary	1916	101,207	100,104
	1917	132,008	132,008
	1918	54,422	81,632
	1919	212,308	281,018
East and West Kootenay	1916	1,410	1,354
	1917	1,964	2,121
	1918	2,605	3,253
	1919	4,177	4,706
Totals.....	1916	102,617	\$ 101,458
	1917	147,886	148,226
	1918	66,528	66,660
	1919	233,224	310,549

TABLE No. 7.—FRUIT PRODUCTION, VARIOUS DISTRICTS, BRITISH COLUMBIA,
YEARS 1916-19—Continued.

PEARS,

District.	Year.	Packages.	Value.
Islands	1916	7,633	\$ 9,541
	1917	6,870	11,335
	1918	7,090	14,613
	1919	8,223	17,841
Lower Mainland	1916	7,360	8,839
	1917	7,145	10,717
	1918	17,561	31,096
	1919	11,017	21,581
Thompson	1916	311	420
	1917	1,000	2,090
	1918	1,017	2,252
	1919	750	1,688
Okanagan and Boundary	1916	24,235	42,263
	1917	24,771	43,845
	1918	51,332	109,100
	1919	54,328	141,142
East and West Kootenay	1916	2,213	3,342
	1917	1,215	2,369
	1918	3,552	7,480
	1919	3,444	7,650
Totals.....	1916	41,758	\$ 64,407
	1917	41,901	70,266
	1918	81,362	165,633
	1919	78,864	189,002

PLUMS AND PRUNES.

Islands	1916	16,788	\$ 9,233
	1917	17,292	11,246
	1918	14,270	14,270
	1919	7,962	10,040
Lower Mainland	1916	42,023	23,112
	1917	41,183	26,769
	1918	17,851	16,066
	1919	20,535	24,345
Thompson	1916	400	320
	1917	2,100	840
	1918	2,813	3,258
	1919	4,800	4,800
Okanagan and Boundary	1916	197,568	139,373
	1917	153,104	113,297
	1918	163,292	158,225
	1919	271,771	306,587
East and West Kootenay	1916	10,311	7,115
	1917	8,782	7,026
	1918	12,066	8,827
	1919	20,215	15,332
Totals.....	1916	267,030	\$ 179,153
	1917	222,401	159,172
	1918	219,292	209,646
	1919	334,283	361,704

BRITISH COLUMBIA.

TABLE No. 7.—FRUIT PRODUCTION, VARIOUS DISTRICTS, BRITISH COLUMBIA,
YEARS 1916-19—Continued.

PEACHES.

District.	Year.	Packages.	Value.
Islands	1916	281	\$ 281
	1917	300	300
	1918	281	281
	1919	300	450
Lower Mainland	1916
	1917
	1918
	1919
Thompson	1916
	1917
	1918
	1919
Okanagan and Boundary	1916
	1917	119,848	74,983
	1918	98,617	65,332
	1919	203,000	207,530
East and West Kootenay	1916	103,123	104,502
	1917	1,393	1,255
	1918	2,333	2,833
	1919	4,185	4,485
Totals.....	1916	7,582	7,042
	1917	121,524	\$ 76,519
	1918	86,250	68,165
	1919	207,505	212,306
	1919	171,007	171,004

APRICOTS.

Islands	1916
	1917
	1918
	1919
Lower Mainland	1916
	1917
	1918
	1919
Thompson	1916
	1917
	1918
	1919
Okanagan and Boundary	1916
	1917	21,841	\$ 14,145
	1918	35,700	33,700
	1919	51,150	60,864
East and West Kootenay	1916	64,575	113,387
	1917	128	153
	1918	1,023	1,279
	1919	6	14
Totals.....	1916	929	1,165
	1917	21,060	\$ 14,298
	1918	36,723	36,979
	1919	51,156	66,878
	1919	65,504	114,532

TABLE No. 7.—FRUIT PRODUCTION, VARIOUS DISTRICTS, BRITISH COLUMBIA,
YEARS 1916-19—Continued.

CHERRIES.

District.	Year.	Packages.	Value.
Islands	1916	8,166	\$ 8,166
	1917	8,982	15,718
	1918	9,889	17,290
	1919	11,276	24,020
Lower Mainland	1916	1,482	1,778
	1917	1,639	2,832
	1918	17,355	31,410
	1919	12,080	26,758
Thompson	1916
	1917	500	750
	1918	1,208	2,565
	1919	2,400	5,100
Okanagan and Boundary	1916	26,892	39,298
	1917	41,553	41,553
	1918	40,360	73,425
	1919	53,244	108,191
East and West Kootenay	1916	8,227	9,120
	1917	6,609	8,003
	1918	9,975	16,430
	1919	19,500	23,381
Totals.....	1916	42,067	\$ 57,272
	1917	59,334	69,976
	1918	78,584	141,129
	1919	92,118	187,450

STRAWBERRIES.

Islands	1916	42,374	\$ 81,358
	1917	38,137	76,274
	1918	37,977	88,712
	1919	64,957	191,607
Lower Mainland	1916	33,261	56,211
	1917	37,666	75,332
	1918	62,986	153,317
	1919	72,560	250,434
Thompson	1916	500	990
	1917	1,100	2,475
	1918	2,253	8,098
	1919	2,200	9,350
Okanagan and Boundary	1916	6,704	14,655
	1917
	1918	2,158	6,456
	1919	3,382	16,910
East and West Kootenay	1916	35,154	47,588
	1917	18,797	35,556
	1918	21,004	48,765
	1919	39,596	91,764
Totals.....	1916	115,083	\$ 209,502
	1917	95,610	189,437
	1918	126,438	305,268
	1919	173,695	560,155

BRITISH COLUMBIA.

TABLE No. 7.—FRUIT PRODUCTION VARIOUS DISTRICTS, BRITISH COLUMBIA,
YEARS 1916-19—Continued.

RASPBERRIES.

District.	Year.	Packages.	Value.
Islands	1916		
	1917	1,767	\$ 3,200
	1918	1,714	3,257
	1919	1,501	4,773
Lower Mainland	1916	1,446	5,040
	1917	56,049	63,017
	1918	61,079	143,174
	1919	151,040	325,322
Thompson	1916	210,803	612,500
	1917
	1918	2,500	6,250
	1919	3,900	12,913
Okanagan and Boundary	1916	4,300	15,910
	1917	10,423	16,633
	1918
	1919	2,102	6,010
East and West Kootenay	1916	4,619	18,014
	1917	7,934	12,774
	1918	7,569	17,237
	1919	10,632	30,571
Totals.....	1916	10,712	33,067
	1917	76,178	\$ 97,716
	1918	76,862	169,938
	1919	199,894	379,591
		237,982	687,537

BLACKBERRIES.

Islands	1916		
	1917	474	\$ 364
	1918	423	744
	1919	474	829
Lower Mainland	1916	537	1,680
	1917	16,419	31,190
	1918	16,419	32,830
	1919	20,883	53,540
Thompson	1916	39,574	94,319
	1917
	1918
	1919	250	825
Okanagan and Boundary	1916	143	176
	1917
	1918	305	1,120
	1919	497	1,980
East and West Kootenay	1916	500	830
	1917	109	537
	1918	858	2,628
	1919	1,401	4,598
Tot.	1916	17,536	\$ 32,800
	1917	17,043	34,139
	1918	22,610	58,120
	1919	39,340	103,402

TABLE No. 7.—FRUIT PRODUCTION, VARIOUS DISTRICTS, BRITISH COLUMBIA, YEARS 1916-19—Continued.

LOGANBERRIES.

District.	Year.	Packages.	Value.
Islands	1916	4,645	\$ 5,342
	1917	4,413	7,723
	1918	3,804	9,440
	1919	5,739	13,874
Lower Mainland	1916	1,001	1,802
	1917	1,100	2,000
	1918	2,000	5,001
	1919	3,8	11,010
Thompson	1916
	1917	700	1,375
	1918	2,134	6,100
	1919	2,300	7,080
Okanagan and Boundary	1916
	1917
	1918
	1919
East and West Kootenay	1916	300	735
	1917
	1918
	1919	125	301
Totals.....	1916	5,046	\$ 7,879
	1917	6,213	12,388
	1918	8,800	18,597
	1919	12,266	34,953

RED CURRANTS.

Islands	1916	610	\$ 928
	1917	610	1,083
	1918	610	1,238
	1919	832	1,072
Lower Mainland	1916
	1917	000	1,080
	1918	2,732	4,038
	1919	4,800	9,825
Thompson	1916
	1917
	1918
	1919	240	540
Okanagan and Boundary	1916	648	810
	1917	78	70
	1918
	1919	800	2,225
East and West Kootenay	1916	496	471
	1917	1,171	1,651
	1918	3,480	4,131
	1919	3,093	4,403
Totals.....	1916	1,763	\$ 2,209
	1917	2,858	4,784
	1918	6,831	10,007
	1919	9,924	15,758

TABLE No. 7.—FRUIT PRODUCTION, VARIOUS DISTRICTS, BRITISH COLUMBIA,
YEARS 1916-19—Continued.

BLACK CURRBANTS.

District.	Year.	Packages.	Value.
Islands	1916	889	\$ 1,680
	1917	977	1,954
	1918	977	2,031
	1919	981	3,385
Lower Mainland	1916	4,274	9,408
	1917	4,744	10,074
	1918	6,008	13,727
	1919	5,042	13,748
Thompson	1916
	1917
	1918
	1919
Okanagan and Boundary	1916	1,240	3,410
	1917	1,416	1,770
	1918	880	1,440
	1919	24	44
East and West Kootenay	1916	1,583	5,793
	1917	800	1,873
	1918	2,770	5,608
	1919	4,111	8,941
Totals.....	1916	4,753	10,122
	1917	7,448	\$ 14,235
	1918	9,396	19,676
	1919	11,720	27,043
		14,505	34,460

GOOSEBERRIES.

Islands	1916	3,043	\$ 4,808
	1917	3,347	6,350
	1918	3,492	5,725
	1919	1,691	3,130
Lower Mainland	1916	3,142	6,284
	1917	3,542	7,084
	1918	4,365	6,335
	1919	6,354	11,400
Thompson	1916
	1917
	1918
	1919
Okanagan and Boundary	1916	1,200	1,308
	1917	594	2,460
	1918	796
	1919
East and West Kootenay	1916	760	1,520
	1917	511	1,297
	1918	723	1,087
	1919	2,154	2,981
Totals.....	1916	3,568	6,000
	1917	4,943	7,452
	1918	7,502	\$ 13,032
	1919
		8,043	16,394
		12,781	19,888
		14,690	25,908

TABLE No. 7.—FRUIT PRODUCTION, VARIOUS DISTRICTS, BRITISH COLUMBIA, YEARS 1916-19—(continued).

BUSH-FRUIT (RED AND BLACK CURRANTS AND GOOSEBERRIES).

District.	Year.	Packages.	Value.
Islands	1916
	1917
	1918
Lower Mainland	1919
	1917
	1918	315	\$ 1,023
Thompson	1919
	1917	550	1,350
	1918	901	2,912
Okanagan and Boundary	1919
	1917
	1918	1,300	4,107
East and West Kootenay	1919	1,302	3,995
	1917
	1918
Totals.....	1919
	1917	750	\$ 1,350
	1918	2,588	7,742
	1919	1,302	3,995

TABLE No. 8.—FRUIT PRODUCTION, BRITISH COLUMBIA (TONS AND VALUE), YEARS 1917-19-19.

Description.	Year.	Quantity.	Value.
Apples	1917	Tons.	
		32,312	\$ 1,887,314
		27,541	2,319,227
		31,744	4,550,453
Crab-apples	1917	3,180	148,220
		1,347	96,690
		4,407	316,845
		923	79,296
Pears	1917	1,790	163,653
		1,656	180,902
		2,225	119,172
		2,193	200,440
Peaches	1917	2,841	301,704
		860	68,165
		1,972	212,305
		1,624	171,904
Apricots	1917	380	36,979
		512	66,878
		655	114,552
		475	68,876
Cherries	1917	620	141,120
		750	187,450
		860	186,437
		1,075	305,268
Raspberries	1917	1,380	560,155
		615	100,938
		1,274	379,591
		1,784	687,537
Blackberries	1917	136	34,130
		181	58,126
		314	103,402
		43	11,388
Loganberries	1917	71	18,597
		98	34,953
		153	32,204
		288	65,280
Bush-fruits	1917	343	85,021
		3,090	380,400
		3,750	414,500
	
Tree-fruits other than apples, not otherwise provided..	1917	42,219	\$2,890,304
		42,482	4,415,180
		71,341	7,772,474
	
Totals.....	1917
	
	
	

TABLE No. 9.—APIARIES AND HONEY-CROP, BRITISH COLUMBIA, YEAR 1919.

District.	Aparies.	Hives.	Crop.	Average Honey per Hive.
<i>Vancouver Island and Gulf Islands.</i>				
			Lb.	Lb.
Comox	40	186	9,300	50.0
Duncan	70	280	8,000	28.5
Gulf Islands	40	145	3,000	20.6
Howe Sound	32	64	1,200	18.7
Nanaimo	120	480	12,000	25.0
Victoria	163	560	15,000	30.0
Totals.....	465	1,655	48,500	29.3
<i>Greater Vancouver.</i>				
Burnaby	83	413	8,600	19.3
Coquitlam	16	75	1,200	14.9
Kerrisdale	24	88	2,080	23.6
South Vancouver	59	358	4,320	12.0
Marpole	18	68	1,520	22.2
North Vancouver	46	230	4,240	18.4
Point Grey	13	58	1,120	19.3
New Westminster	30	120	2,400	20.0
Vancouver	93	404	7,120	17.6
Totals.....	382	1,814	31,920	17.5
<i>Lower Fraser.</i>				
Delta	71	439	21,180	48.2
Surrey	94	592	19,060	37.9
Langley	70	453	17,920	39.5
Matsqui	120	596	39,420	66.1
Maple Ridge	47	276	16,140	58.4
Richmond	47	298	4,160	20.0
Totals.....	449	2,474	117,880	47.6
<i>Upper Fraser and Chilliwack.</i>				
Chilliwack	80	365	7,300	20.0
Kent	18	93	1,305	15.0
Dewdney	19	131	5,240	40.0
Mission	59	223	7,136	32.0
Sumas	45	289	11,849	41.0
Totals.....	221	1,101	32,920	29.9
<i>Okanagan.</i>				
Okanagan	223	1,338	66,900	50.0
<i>Kootenays.</i>				
Slocan Valley	12	50	6,100	122.0
Kootenay Lake and West Arm	24	72	3,845	53.4
Nelson	20	88	6,600	75.0
Arrow Lakes	21	168	10,820	64.4
Castlegar	0	74	2,825	38.1
East Kootenay	5	86	1,200	13.9
Boundary	11	207	6,620	31.9
Creston Valley	26	169	8,450	50.0
Totals.....	125	914	46,460	50.8
<i>Summary.</i>				
Vancouver Island and Gulf Islands.....	465	1,655	48,500	29.3
Greater Vancouver	382	1,814	31,920	17.5
Lower Fraser	449	2,474	117,880	47.6
Upper Fraser and Chilliwack	221	1,101	32,920	29.9
Okanagan	223	1,338	66,900	50.0
Kootenays	125	914	46,460	50.8
Totals.....	1,865	9,296	344,580	37.0

Total honey-crop, 172.29 tons.

EXPRESS SHIPMENTS.

TABLE No. 10.—EXPRESS SHIPMENTS, FRUITS AND VEGETABLES, BRITISH COLUMBIA, YEARS 1911-19.

Year.	CASCADE AND THOMPSON SECTIONS, INCLUDING VANCOUVER ISLAND.		SHIRWAP AND OKANAGAN AND OKANAGAN LAKE POINTS.		KOOTENAY SECTION.		TOTALS.		
	Packages.	Weight.	Packages.	Weight.	Packages.	Weight.	Total Packages.	Total Weight.	Increase in Weight or Decrease from Previous Year.
		Lb.		Lb.		Lb.		Lb.	Per Cent
1911	65,424	1,750,910	22,974	620,290	16,307	413,577	104,705	2,784,777
1912	64,704	1,801,967	82,814	2,036,863	18,882	491,463	106,400	4,330,233	+55.5
1913	69,235	1,839,710	107,561	2,581,215	31,466	783,021	208,262	5,233,946	+29.1
1914	94,020	2,332,022	121,136	2,958,026	43,714	1,036,855	259,470	6,326,903	+29.2
1915	103,833	2,538,715	158,931	3,829,797	53,988	1,239,485	318,752	7,598,997	+20.1
1916	123,716	2,859,177	123,014	3,139,783	65,892	1,497,191	312,622	7,490,151	- 1.4
1917	169,137	3,063,193	209,196	5,391,850	59,980	1,131,741	429,319	10,526,794	+40.42
1918	179,077	3,194,824	281,008	7,092,838	72,084	1,815,158	562,250	14,072,820	+33.68
1919	214,261	3,288,778	340,325	9,013,589	103,223	2,622,187	637,809	16,954,554	+20.47

Weight increase since 1911, 598.8 per cent.

TABLE No. 11.—RELATING TO QUANTITY OF FRUITS AND VEGETABLES FORWARDED BY EXPRESS, YEARS 1915-19.

Cascade and Thompson Sections, including Vancouver Island.

	1915.	1916.	1917.	1918.	1919.
	Lb.	Lb.	Lb.	Lb.	Lb.
Abbotsford	6,833	12,465	7,270	8,598	18,360
Agassiz	4,603	1,129	10,505	13,470	20,837
Chenailnus	3,490	4,496	2,509	2,509	7,897
Chilliwack	112,489	88,563	239,915	543,432	347,406
Clayburn	123	3,495	1,865	830	792
Cobble Hill	26,760	13,204	21,004	30,262	8,405
Cowichan	229	940	1,195	2,055	3,471
Ducks	730	220	4,010	5,278	6,093
Denon	29,661	22,837	19,653	31,273	37,322
Hammond	335,390	411,476	454,313	553,206	401,897
Haney	167,010	297,822	139,933	343,654	375,741
Harrison	29,070	17,533	12,846	6,345	4,855
Intze	596,991	608,474	1,047,822	1,247,692	1,019,272
Hope	3,060	1,615
Kamloops	14,564	10,014	16,274	81,221	98,415
Langham	25,125
Langley	3,094	15,465
Lytton	15,092	3,256	9,923	36,539	16,499
Matsqui	2,060	262	625	24,429	20,650
Mission Junction	393,402	417,881	603,825	666,831	909,553
Nanaimo	3,563	6,697	5,448	10,813
New Westminster	89,529	107,722	119,181	107,881	37,023
Parksville	317	799	793	8,062	3,222
Rosedale	38,207	36,831
Ruskin	3,773	7,060	3,614	9,669	6,968
Savona	897	691	5,125	1,877	4,450
Spences Bridge	9,382	7,374	5,171	20,539	21,029
Vancouver	288,642	316,880	416,736	444,229	850,122
Victoria	220,686	331,409	637,221	637,924	430,281
Walhuchin	11,279	15,457	74,982	78,310
Whonnoek	59,911	50,058	51,952	88,899	152,868
Yale	4,954	6,061	9,954	16,525	16,634
<i>Routes.</i>					
Calgary and Vancouver	52,845	44,207	28,763	48,065	82,576
Nicola Branch	1,690	6,350	7,498
Vancouver and Agassiz	51,840	6,590
Vancouver and Pentton	19,594
Vancouver and Nelson	24,763	35,953	53,055
Vancouver and Ruby Creek	31,655
Vancouver and Sumas	5,974	5,265
Mission and Sumas	200	255
Victoria and Courtenay	5,345	4,571	4,169	7,160	8,601
Victoria and Alberni	3,709	2,093	60	908
Victoria and Wellington	5,335	4,603	11,983	12,835	15,144
Totals	2,538,715	2,859,177	4,003,193	5,194,824	5,288,778

TABLE No. 11.—RELATING TO QUANTITY OF FRUITS AND VEGETABLES FORWARDED BY EXPRESS, YEARS 1915-19—Continued.

	1915.	1916.	1917.	1918.	1919.
	Lb.	Lb.	Lb.	Lb.	Lb.
Arimatrong	632,57	590,003	863,819	934,517	1,440,267
Ashcroft			2,530	3,863	6,620
Blue River			90		522
Enderby	9,9	11,684	16,747	6,727	23,435
Golden	1,005	531	2,913	3,049	3,785
Kelowna	605,525	350,475	757,595	1,354,563	1,629,692
Malakwa	6,336				
Naramata			250,971	340,161	324,204
Notch Hill	29,682	42,966	24,353	45,447	59,334
Okanagan Centre	76,639	60,545	62,668	154,232	165,724
Okanagan Landing	4,292	2,489	3,264	4,679	5,286
Peachland	140,334	96,963	179,253	265,127	213,744
Penticton	594,012	459,442	804,411	897,278	1,122,123
Revelstoke	18,395	21,017	17,545	35,745	37,382
Salmon Arm	203,895	170,038	197,640	345,985	506,710
Shuswap	1,893	873	1,093	2,997	
Summerland	811,247	791,355	1,245,551	1,608,846	2,204,840
Vernon	368,676	182,983	250,074	526,524	607,217
West Summerland		109,568	494,502	283,142	379,401
<i>Routes.</i>					
Okanagan Landing and Naramata					60,139
Okanagan Landing and Penticton	320,250	237,555	227,711	248,165	251,794
Scamouss and Okanagan Landing		2,063	3,120	1,801	1,370
Scamouss and Penticton	4,812				
Totals	3,829,797	3,139,783	5,391,850	7,062,838	9,043,589

Kootenay Section.

Arrowhead	1,077	5,048	3,507	3,295	2,189
Atholmer	1,902	4,582	2,224	5,410	4,018
Brilliant			1,064		
Castlegar Junction	9,329	6,235	2,145	8,722	14,024
Cranbrook	7,445	7,716	5,332	17,904	17,163
Creston	330,719	389,079	241,770	354,776	494,418
Edgewood	639	1,045	1,701	2,061	3,211
Erickson					
Grand Forks	36,670	39,683	80,390	99,156	290,432
Kaslo	17,141	22,669	14,585	59,232	152,804
Nakusp	30,376	19,927	7,460	24,231	74,160
Nelson	31,294	53,208	42,321	107,419	20,006
Procter	4,773	3,289	6,165	11,782	186,997
Renata	17,513	47,982	37,325	22,212	39,610
Robson					
Rock Creek				38,485	50,060
Rosebery	1,035	2,355	1,277	1,204	835
Rossland	646	318	437	1,386	
Sirdar	13,800	18,060	24,020	9,476	
Slocan City	1,102	430	1,948	43,040	48,760
South Slocan	1,737	4,205	11,938	2,952	1,987
Smelter Junction	715			16,124	18,550
Yahk	6,704	8,124	1,334		
<i>Routes.</i>					
Cranbrook and Kimberley	2,173	827	708	60	720
Golden and Cranbrook				1,702	2,365
Golden and Waldo	2,470	2,152	2,418		
Kettle Valley	13,559				
Lard-au and Gerrard					
Nakusp and Sandon					
Nelson and Lardau	76,051	60,039	50,853	62,913	88,419
Nelson and Medicine Hat	351,985	493,373	346,854	513,793	659,130
Nelson and Midway	6,283	604			
Nelson and Penticton		665			
Nelson and Rossland	141,962	168,570	135,760	182,016	189,030
Nelson and Slocan	17,129	22,018	12,219	16,030	17,151
Revelstoke and Robson	103,732	119,911	64,864	235,069	335,030
Totals	1,230,485	1,497,191	1,131,741	1,815,138	2,622,187
Grand totals	7,598,997	7,496,151	10,526,784	14,072,820	16,954,554
Total packages	318,752	312,622	426,039	532,259	657,509

LIVE STOCK.

TABLE No. 12.—NUMBERS OF FARM LIVE STOCK IN BRITISH COLUMBIA, YEARS 1917-19.

Description.	1917.	1918.	1919.
Horses—			
Stallions, 2 years old and over	984	838	828
Mares, 2 years old and over	20,220	18,687	18,734
Geldings, 2 years old and over	18,319	17,145	17,154
Colts and fillies under 2 years	8,408	7,118	7,001
Other horses not classified	7,193	343
Total horses	55,124	44,131	43,717
Mules	156	194	580
Cattle—			
Bulls for breeding	5,144	5,247
Milch cows	49,005	50,965
Calves under 1 year	47,188	48,132
Steers, 2 years old and over	17,195
All other cattle	130,000	124,591
Beef cattle—			
Bulls for breeding	1,677
Cows, 2 years old and over	89,034
Yearlings	23,734
Calves	24,854
All other beef cattle	16,771
Dairy cattle—			
Bulls for breeding	2,480
Milch cows, 2 years old and over	51,594
Yearlings	17,880
Calves	10,737
All other dairy cattle	4,477
Total cattle	240,343	246,130	246,238
Sheep	558	45,291	44,985
Swine	688	39,865	44,960
Goats	3,500
Poultry—			
Hens	600,229	430,592	443,491
Chickens	735,440	538,571	695,874
Turkeys	7,632	5,610	7,717
Geese	8,322	6,111	11,962
Ducks	16,368	11,922	21,977
Total poultry	1,368,000	1,001,806	1,181,021
Rabbits	83,050

IMPORTS.

TABLE No. 13.—AGRICULTURAL PRODUCTS IMPORTED FROM OTHER PROVINCES IN CANADA INTO BRITISH COLUMBIA, YEARS 1917-18-19.

Description.	1919.		1918.		1917.	
	Quantity.	Value.	Quantity.	Value.	Quantity.	Value.
Horses..... No.	109	\$ 18,774				
Beef cattle..... "	14,770	1,616,774	14,782	\$ 1,306,983	13,128	\$ 913,973
Sheep..... "	11,710	193,215	7,276	252,354	26,269	269,397
Swine..... "	46,376	1,590,293	32,287	927,400	56,644	1,179,974
Total live stock.....		\$ 3,418,066		\$ 2,486,802		\$ 2,383,349
Beef and veal..... lb.	2,542,001	\$ 432,140	2,757,121	\$ 490,078	4,287,902	\$ 687,340
Pork and pork products..... "	6,009,211	1,759,210	8,046,235	3,271,498	7,190,559	1,858,806
Mutton..... "	110,350	27,572	159,423	35,988	583,966	134,786
Lard..... "	629,104	18,983	724,508	20,546	1,979,530	419,301
Meats (canned)..... "	181,454	52,622	128,038	19,490	128,550	20,678
Total meats.....	9,472,129	\$ 2,290,527	11,815,323	\$ 3,837,609	14,170,507	\$ 3,120,917
Poultry..... lh.	894,020	\$ 250,325	1,438,243	\$ 166,249	1,170,255	\$ 192,641
Eggs..... doz.	1,041,202	583,973	1,269,514	897,962	1,289,140	827,615
Total poultry products.....		\$ 834,298		\$ 1,064,211		\$ 1,020,256
Butter..... lb.	4,563,212	\$ 2,441,318	5,980,183	\$ 2,648,353	7,560,736	\$ 2,814,403
Ch. se..... "	1,402,501	437,580	1,533,979	599,290	1,871,892	579,555
M. (condensed and evaporated)..... cases	80,041	449,830		606,195		213,596
Total dairy products.....		\$ 3,328,728		\$ 3,853,798		\$ 3,607,554
Whole grains..... bu.	2,049,161	\$ 3,073,741	2,668,387	\$ 1,890,834	2,595,707	\$ 1,701,966
Mill stock-feed..... tons	12,405	553,283	18,511	755,742	25,358	731,599
Flour..... bbls.	365,745	3,877,022	390,880	3,520,963	402,140	3,603,852
Malt..... bu.	70,833	172,850				
Total grains, etc.....		\$ 7,676,876		\$ 6,167,569		\$ 6,037,417
Hay..... tons	21,905	\$ 737,248	20,354	\$ 742,282	14,528	\$ 344,127
Canned vegetables..... lb.	831,050	\$ 81,495	1,334,304	\$ 254,513	401,580	\$ 109,468
Canned fruits..... "	399,026	43,675				
Honey..... "	25,609	3,024	23,016	3,031	1,772	400
Total miscellaneous.....		\$ 133,194		\$ 257,544		\$ 109,877
Grand totals.....		\$18,419,837		\$ 18,409,835		\$ 16,623,497

TABLE No. 14.—AGRICULTURAL PRODUCTS IMPORTED FROM FOREIGN POINTS INTO BRITISH COLUMBIA, YEARS 1917-19.

Description.	1919.		1918.		1917.	
	Quantity.	Value.	Quantity.	Value.	Quantity.	Value.
Horses.....No.	463	\$ 37,955	233	\$ 24,625	391	\$ 34,350
Cattle....."	22	886	37	2,159	342	13,206
Sheep....."	1,658	13,944	70	525	6,075	38,658
Total live stock.....		\$ 52,784		\$ 27,309		\$ 86,213
Beef and veal.....lb.	36,209	\$ 6,986	3,917	\$ 474	157,918	\$ 16,735
Pork and pork products....."	990,317	276,070	131,023	33,667	415,145	91,331
Mutton....."	3,735,733	645,080	5,092,905	787,688	1,839,045	349,786
Lard....."	156,662	40,565	41,360	10,579	5,003	1,196
Meats (canned)....."	194,657	58,141	161,034	33,906		79,450
Other meats....."		153,313		72,473		
Total meats.....		\$ 1,180,655		\$ 938,778	2,417,111	\$ 528,498
Poultry.....lb.		\$ 28,179		\$ 15,959		\$ 12,812
Eggs.....doz.	939,988	400,208	452,008	162,658	733,359	230,396
Total poultry products.....		\$ 428,387		\$ 178,617		\$ 249,207
Butter.....lb.	978,546	\$ 425,850	754,240	\$ 266,591	253,390	\$ 98,254
Cheese....."	49,937	20,740	44,960	16,833	113,760	32,547
Total dairy products.....		\$ 440,590		\$ 283,424		\$ 128,801
Apples.....lb.	1,006,400	\$ 45,366	3,823,721	\$ 125,657	3,633,295	\$ 91,696
Other tree-fruits....."	4,301,694	225,564	2,032,987	141,690	3,097,060	114,833
Small fruits....."	1,257,840	142,423	1,033,670	194,169	1,110,622	86,624
Canned fruits....."	2,679,751	288,414	1,712,517	147,799	2,131,393	161,008
Total fruits.....	9,304,625	\$ 701,767	9,562,845	\$ 519,315	9,972,350	\$ 454,213
Potatoes.....tons	842	\$ 34,761	6,160	\$ 116,591	957	\$ 34,970
Other vegetables....."		282,142		258,636		394,115
Canned vegetables.....lb.	1,623,122	183,220	1,319,593	138,479	2,089,000	159,062
Total vegetables.....		\$ 500,123		\$ 513,706		\$ 588,147
Hay.....tons.	13,572	\$ 326,977	5,845	\$ 168,150	1,577	\$ 27,020
Grains.....hu.	179,436	\$ 594,963	199,164	\$ 619,005	328,356	\$ 1,059,755
Malt....."	28	2,611	365	545	553,340	19,481
Total grains and malt.....		\$ 597,593		\$ 619,550		\$ 1,079,236
Honey.....lb.	98,043	\$ 19,197	151,782	\$ 27,175	59,949	\$ 9,571
Hops....."	88,138	24,396	42,042	3,087	15,523	2,577
Nursery stock....."		35,844		16,550		12,226
Total miscellaneous.....		\$ 79,437		\$ 46,762		\$ 24,374
Grand totals.....		\$ 4,314,313		\$ 3,405,611		\$ 3,162,709

TABLE No. 15.—IMPORTED FRUIT, POTATOES, ETC., INSPECTED AND CONDEMNED, ALL PORTS OF ENTRY, BRITISH COLUMBIA, YEARS 1917-18-19.

(By W. H. LYNE, INSPECTOR OF IMPORTED FRUIT, NURSERY STOCK, ETC.)

Kind.	Year.	Inspected.	Condemned
Apples	boxes 1917	92,288	6,804
Apples	boxes 1918	100,213	10,512
Apples	boxes 1919	24,710	2,804
Apples	boxes 1917	146	1
Apples	boxes 1918	467	25
Apples	boxes 1919	450	46
Apples	bbls. 1917	2	1
Apples	bbls. 1918	2
Apples	bbls. 1919	8
Apricots	boxes 1917	7,981	3
Apricots	boxes 1918	29,296	5
Apricots	boxes 1919	26,176	227
Cherries	boxes 1917	8,940	27
Cherries	boxes 1918	6,621	5
Cherries	boxes 1919	8,140	166
Crab-apples	boxes 1917	98	6
Crab-apples	boxes 1918	39	24
Crab-apples	boxes 1919	70	1
Crab-apples	boxes 1917	142
Crab-apples	boxes 1918
Crab-apples	boxes 1919
Nectarines	boxes 1917	25
Nectarines	boxes 1918
Nectarines	boxes 1919	16
Peaches	boxes 1917	76,594	79
Peaches	boxes 1918	53,863	42
Peaches	boxes 1919	60,107	1,400
Pears	boxes 1917	18,091	717
Pears	boxes 1918	18,007	7,173
Pears	boxes 1919	32,076	2,613
Pears	boxes 1917	17
Pears	boxes 1918	220
Pears	boxes 1919	51
Plums	boxes 1917	15,846	145
Plums	boxes 1918	11,090
Plums	boxes 1919	10,965	92
Prunes	boxes 1917	2,427
Prunes	boxes 1918	515
Prunes	boxes 1919	3,290
Quince	boxes 1917
Quince	boxes 1918	1
Quince	boxes 1919	47
Grapefruit	boxes 1917	6,302	21
Grapefruit	boxes 1918	10,652
Grapefruit	boxes 1919	10,987	41
Lemons	boxes 1917	20,291
Lemons	boxes 1918	19,719
Lemons	boxes 1919	23,601
Limes	boxes 1917	8
Limes	boxes 1918	2
Limes	boxes 1919
Oranges, California	boxes 1917	144,962	94
Oranges, California	boxes 1918	65,234
Oranges, California	boxes 1919	136,382	670
Oranges, Chinese	boxes 1917	199
Oranges, Chinese	boxes 1918	169
Oranges, Chinese	boxes 1919	364
Oranges, Japanese	boxes 1917	80,931	2,000
Oranges, Japanese	boxes 1918	99,364	6
Oranges, Japanese	boxes 1919	138,141
Persimmons	boxes 1917	210
Persimmons	boxes 1918
Persimmons	boxes 1919	269
Pineapples	boxes 1917	234
Pineapples	boxes 1918	247
Pineapples	boxes 1919	816
Pomegranates	boxes 1917	226
Pomegranates	boxes 1918	25
Pomegranates	boxes 1919	248
Pomelos	boxes 1917	408
Pomelos	boxes 1918	20
Pomelos	boxes 1919	79
Tangerines	boxes 1917	30
Tangerines	boxes 1918	65
Tangerines	boxes 1919	5
Egg-plants	boxes 1917	330
Egg-plants	boxes 1918	15
Egg-plants	boxes 1919	152
Peppers	boxes 1917	3,333
Peppers	boxes 1918	241

TABLE No. 15.—IMPORTED FRUIT, POTATOES, ETC., INSPECTED AND CONDEMNED, ALL PORTS OF ENTRY, BRITISH COLUMBIA, YEARS 1917-18-19—Continued.

Kind.	Year.	Inspected.	Condemned
Peppers	boxes 1919	1,072
Potatoes, white	pkgs. 1917	42,116*	13,043
Potatoes, white	pkgs. 1918	163,325	1
Potatoes, white	pkgs. 1919	79,696	2,283
Potatoes, sweet	pkgs. 1917	4,023	3
Potatoes, sweet	pkgs. 1918	3,561	1
Potatoes, sweet	pkgs. 1919	5,202	355
Tomatoes	boxes 1917	5,847	61
Tomatoes	boxes 1918	3,630	12
Tomatoes	boxes 1919	5,955	30
Yakimlines	boxes 1917	89
Yakimlines	boxes 1918
Yakimlines	boxes 1919
Yams	crates 1917	120	20
Yams	crates 1918	548
Yams	crates 1919	940
Mango	crates 1917
Mango	crates 1918
Mango	crates 1919	2
Taro	crates 1917
Taro	crates 1918	909
Taro	crates 1919	1,800

* Australian (shrinkage from decay).

TABLE No. 16.—IMPORTED NURSERY STOCK INSPECTED AND CONDEMNED AT VANCOUVER, B.C., YEARS 1917-18-19.

(By W. H. LYNE, INSPECTOR OF IMPORTED FRUIT, NURSERY STOCK, ETC.)

Kind.	Year.	Inspected.	Condemned
Apples	trees 1917	37,665	1,601
Apples	trees 1918	33,642	1,739
Apples	trees 1919	25,968	246
Apricots	trees 1917	6,922	723
Apricots	trees 1918	5,311	21
Apricots	trees 1919	10,480	249
Cherries	trees 1917	4,798	35
Cherries	trees 1918	7,922	56
Cherries	trees 1919	6,478	169
Crab-apples	trees 1917	693	100
Crab-apples	trees 1918	1,042	100
Crab-apples	trees 1919	465	22
Nectarines	trees 1917	190
Nectarines	trees 1918	73	1
Nectarines	trees 1919	53	2
Peaches	trees 1917	3,204	49
Peaches	trees 1918	2,498	7
Peaches	trees 1919	4,703	1,020
Pears	trees 1917	6,032	692
Pears	trees 1918	6,347	238
Pears	trees 1919	9,605	272
Plums	trees 1917	2,783	40
Plums	trees 1918	4,011	25
Plums	trees 1919	3,652	42
Prunes	trees 1917	3,797	18
Prunes	trees 1918	2,420	37
Prunes	trees 1919	4,669	13
Mulberries	trees 1917	89	7
Mulberries	trees 1918	123	19
Mulberries	trees 1919	59
Figs	trees 1917	78
Figs	trees 1918	31
Figs	trees 1919	5
Quinces	trees 1917	182	13
Quinces	trees 1918	227	5
Quinces	trees 1919	153	3
Total standard	1917	65,569	3,368
Total standard	1918	63,647	2,248
Total standard	1919	66,209	2,044
Almonds	trees 1917	33
Almonds	trees 1918	13
Almonds	trees 1919	14
Chestnuts	trees 1917	186	75
Chestnuts	trees 1918	75	1
Chestnuts	trees 1919	11

TABLE No. 16.—IMPORTED NURSERY STOCK INSPECTED AND CONDEMNED AT VANCOUVER, B.C., YEARS 1917-18-19—Continued.

Kind.		Year.	Inspected.	Condemned
Elberts	trees	1917	276	1
Elberts	trees	1918	101	2
Elberts	trees	1919	48	2
Walnuts	trees	1917	800	4
Walnuts	trees	1918	451
Walnuts	trees	1919	277
Total nuts		1917	1,391	80
Total nuts		1918	640	3
Total nuts		1919	350	2
Grafts	units	1917	21,418	600
Grafts	units	1918	41,116
Grafts	units	1919	66,270	1,947
Seedlings	units	1917	169,456	2,505
Seedlings	units	1918	228,596	131
Seedlings	units	1919	238,769	604
Total grafts and seedlings		1917	190,874	3,105
Total grafts and seedlings		1918	294,682	131
Total grafts and seedlings		1919	305,030	2,531
Blackberries	bushes	1917	9,411	262
Blackberries	bushes	1918	19,796	231
Blackberries	bushes	1919	10,482	223
Currants	bushes	1917	4,820	47
Currants	bushes	1918	1,247	36
Currants	bushes	1919	2,044	61
Gooseberries	bushes	1917	5,580	175
Gooseberries	bushes	1918	4,416	421
Gooseberries	bushes	1919	6,776	18
Grapes	vines	1917	3,063	352
Grapes	vines	1918	3,381	614
Grapes	vines	1919	1,400	86
Raspberries	canes	1917	10,010	2,175
Raspberries	canes	1918	3,293	33
Raspberries	canes	1919	13,956	83
Strawberries	plants	1917	122,212
Strawberries	plants	1918	56,674
Strawberries	plants	1919	173,346
Total vines and bushes		1917	155,996	3,011
Total vines and bushes		1918	89,007	1,335
Total vines and bushes		1919	216,883	471
Bulbs and roots	units	1917	386,394	7
Bulbs and roots	units	1918	507,936
Bulbs and roots	units	1919	375,807	2,509
Ornamentals, trees, and shrubs	units	1917	21,944	211
Ornamentals, trees, and shrubs	units	1918	237,837	204
Ornamentals, trees, and shrubs	units	1919	20,826	163
Plants	units	1917	17,438	138
Plants	units	1918	64,404	1
Plants	units	1919	26,289
Rosebushes	units	1917	26,215	44
Rosebushes	units	1918	44,332	1,223*
Rosebushes	units	1919	34,969	107
Total ornamentals		1917	452,011	400
Total ornamentals		1918	874,509	1,428
Total ornamentals		1919	457,891	2,674

* 1,110 dead.

METEOROLOGICAL.

TABLE No. 17.—SHOWING PRECIPITATION, YEARS 1918-19 (IN INCHES).

Station.	Year.	Jan.	Feb.	March.	April.	May.	June.	July.	Aug.	Sept.	Oct.	Nov.	Dec.	Total.
<i>East Kootenay.</i>														
Cranbrook	1918	1.30	1.38	1.44	0.12	0.66	0.56	2.31	1.70	1.15	1.62	1.06	0.63	13.92
Cranbrook	1919	3.20	4.35	2.34	0.92	0.79	0.75	0.00	1.17	0.18	0.45	0.60	1.77	14.47
Creston	1918	0.92	2.42	2.34	0.46	1.77	0.88	1.80	1.80	0.89	2.86	3.04	1.73	10.91
Creston	1919	3.39	2.67	0.89	1.56	1.38	0.51	0.34	1.35	0.36	1.46	1.46	1.97	16.37
Golden	1918	3.18	0.87	0.99	0.16	1.38	2.30	1.42	0.95	0.78	1.79	0.72	4.65	20.75
Golden	1919	2.80	1.40	0.00	0.23	0.60	0.21	0.75	1.05	0.69	0.10	1.90	2.60	12.33
Wilmer	1918	1.14	1.64	0.65	0.22	1.14	0.43	1.15	2.28	1.61	1.31	0.53	1.60	13.68
Wilmer	1919	1.52	0.95	0.32	0.25	0.72	0.68	0.53	2.56	0.48	0.85	1.16	1.05	11.07
<i>West Kootenay.</i>														
Glacier	1918	12.53	14.22	6.50	0.93	3.74	2.88	1.46	5.83	1.24	5.89	6.00	12.56	74.37
Glacier	1919	3.76	3.19	4.63	1.89	3.51	1.42	2.43	2.44	2.50	3.61	3.69	6.31	54.78
Nakusp	1918	2.31	2.78	3.09	0.25	3.32	0.82	0.39	0.30	0.13	3.97	2.43	3.31	25.93
Nakusp	1919	2.15	2.60	2.50	0.48	3.27	0.91	1.96	1.23	2.46	1.84	3.74	3.38	27.34
Nelson	1918	4.25	2.75	2.04	1.63	1.86	1.11	0.37	2.45	1.41	1.69	2.76	2.72	29.08
Nelson	1919	7.60	6.50	4.46	0.92	1.86	1.14	1.90	2.42	0.24	5.74	5.46	2.94	74.39
Revelstoke	1918	3.37	3.95	3.05	1.82	2.70	1.79	0.48	2.52	2.65	2.71	5.92	4.59	43.39
Revelstoke	1919	3.13	3.33	2.93	0.79	2.20	1.62	1.93	1.78	1.54	4.61	3.76	2.54	39.52
Rossland	1918	5.01	3.68	2.76	2.56	2.83	0.28	0.31	0.86	2.07	1.10	2.96	2.60	26.92
<i>Boundary.</i>														
Grand Forks	1918	2.51	1.31	1.56	0.43	1.10	1.37	1.23	2.63	0.74	1.75	1.52	1.28	17.43
Grand Forks	1919	1.45	2.50	1.11	0.87	1.36	0.18	0.43	0.71	1.03	1.03	1.32	0.53	12.52
Hedley	1918	2.81	0.65	0.36	0.24	0.83	0.45	1.38	1.92	0.13	1.08	0.81	1.72	12.38
Hedley	1919	2.60	3.56	0.69	0.27	0.71	1.09	0.42	0.59	1.49	0.83	1.90	0.65	13.79
<i>Okanagan Valley.</i>														
Armstrong	1918	2.65	1.22	0.70	0.34	1.07	1.46	1.28	2.68	0.49	2.23	1.70	1.87	17.70
Armstrong	1919	1.35	0.71	0.83	0.83	0.90	0.75	0.37	0.76	1.21	2.04	2.18	1.33	14.14
Enderyby	1918	2.51	2.51	1.32	0.28	0.98	1.17	0.94	2.76	0.23	2.04	1.67	2.03	19.98
Enderyby	1919	1.46	2.51	1.74	0.75	0.23	0.89	1.21	0.71	1.49	1.88	1.87	1.63	16.28
Kelowna	1918	0.95	0.80	0.79	0.23	0.51	0.38	0.38	1.15	0.18	1.26	2.60	2.48	13.26
Kelowna	1919	0.65	1.76	1.79	0.27	0.51	0.38	0.21	0.87	0.53	0.84	2.58	1.21	10.57
Penticton	1918	1.24	0.23	0.39	0.22	0.80	0.36	0.70	0.68	0.34	0.64	1.04	0.63	9.11
Penticton	1919	1.14	1.62	0.67	0.62	0.30	0.36	0.18	0.41	0.97	0.73	1.03	0.79	9.11
Summerland	1918	1.37	0.64	0.79	0.13	0.58	0.33	1.17	0.85	0.16	0.52	0.93	0.79	9.46
Summerland	1919	1.02	1.36	0.91	0.23	0.42	0.68	0.27	0.53	0.84	0.80	2.18	0.08	9.14

TABLE NO. 17.—SHOWING PRECIPITATION, YEARS 1918-19 (IN INCHES)—Continued.

Station.	Year.	Jan.	Feb.	March.	April.	May.	June.	July.	Aug.	Sept.	Oct.	Nov.	Dec.	Total.
<i>Okanagan Valley—Continued.</i>														
Vernon	1918	1.99	0.85	0.98	0.34	0.77	1.03	2.41	2.34	0.35	1.29	1.02	1.16	14.53
Vernon	1919	0.74	1.59	1.21	0.18	0.86	0.92	0.65	0.35	1.15	2.03	2.08	1.62	14.18
<i>Thompson Watershed.</i>														
Kamloops	1918	1.87	0.43	0.23	0.09	1.12	0.67	1.23	2.17	0.28	0.64	0.63	0.91	11.03
Kamloops	1919	0.53	0.98	1.10	0.46	0.06	0.67	1.27	0.71	0.29	1.23	1.92	0.34	9.96
Nicola Lake	1918	1.05	0.00	0.76	0.94	0.85	0.98
Nicola Lake	1919
Salmon Lake	1918	6.50	1.85	0.44	0.35	0.02	1.46	0.79	2.81	0.21	2.56	2.07	1.80	21.46
Salmon Arm	1919	2.05	2.30	1.70	0.85	1.06	0.64	0.70	0.47	1.25	1.55	2.11	2.81	18.75
Tranquille	1918	0.33	0.05	0.10	0.10	0.55	0.18	0.72	M.	0.45	0.25	0.40	0.90	...
Tranquille	1919	0.28	0.70	0.30	0.18	0.46	0.40	1.26	0.04	0.50	0.76	1.03	0.10	6.63
<i>Lower Mainland.</i>														
Agassiz	1918	9.76	7.02	10.69	1.98	4.64	1.74	2.28	7.94	0.26	14.65	9.06	13.29	82.96
Agassiz	1919	11.01	6.98	2.67	6.26	4.71	2.68	0.66	0.45	6.70	6.17	15.71	9.63	76.93
Chilliwack	1918	8.61	6.33	4.02	1.17	3.09	0.73	1.96	2.70	0.33	10.18	6.64	12.05	65.44
Chilliwack	1919	8.65	5.75	9.57	1.45	3.29	1.17	4.40	0.37	2.43	3.64	11.09	10.59	61.69
Coquitlam	1918	13.52	10.31	8.98	4.20	1.14	1.28	3.96	7.27	0.71	11.91	8.74	11.16	81.97
Coquitlam	1919	8.25	6.81	8.98	4.20	0.45	0.60	0.86	0.39	2.13	2.85	13.77	11.47	67.60
Ladner	1918	7.30	5.70	3.25	0.20	0.45	0.53	1.15	2.29	0.25	4.80	6.50	5.45	54.50
Ladner	1919	4.50	5.40	4.45	3.50	2.56	0.55	0.25	1.12	1.12	2.75	8.50	3.89	41.91
North Nicomen	1918	10.95	9.38	9.87	1.41	3.96	1.74	2.59	0.24	0.27	12.71	9.34	13.37	79.75
North Nicomen	1919	7.78	7.80	7.78	1.19	6.68	1.54	2.59	0.54	3.23	2.38	12.92	10.16	73.50
Vancouver	1918	11.04	10.50	7.47	1.50	1.15	1.00	2.20	0.70	0.20	1.46	7.03	8.07	62.71
Vancouver	1919	7.37	7.35	6.61	4.47	3.00	1.62	0.15	1.15	1.14	3.14	11.25	9.74	57.21
<i>Islands.</i>														
Alberni	1918	8.15	14.80	17.61	1.80	1.13	2.14	2.26	2.50	0.10	7.54	12.54	10.94	82.00
Alberni	1919	17.47	8.39	8.93	7.90	4.95	2.00	0.06	0.18	1.24	1.94	16.40	12.65	124.85
Clayoquot	1918	18.82	20.09	23.43	4.89	3.06	3.20	1.70	6.36	0.31	17.27	17.83	14.83	135.03
Clayoquot	1919	20.92	10.32	12.69	9.75	8.61	2.78	1.05	1.22	2.44	6.31	14.97	16.07	184.97
Cowichan	1918	4.54	6.31	3.83	0.96	0.62	0.36	1.05	0.25	0.17	4.31	6.23	8.02	104.09
Cowichan	1919	8.29	6.43	3.27	3.30	2.20	0.92	0.09	0.49	1.52	7.01	7.61	8.02	42.11
Goldstream	1918	3.40	0.68	1.04	1.22	2.20	1.20	0.84	2.00	0.08	8.69	8.45	13.40	62.53
Goldstream	1919	12.07	7.11	1.45	3.47	2.09	0.08	0.08	0.18	1.29	1.80	10.98	9.47	58.72
Ladysmith	1918	2.97	3.16	4.73	0.09	0.25	1.01	1.65	1.01	0.10	4.57	7.22	7.86	44.52
Ladysmith	1919	9.58	6.30	4.41	4.23	2.23	1.05	0.37	1.04	1.72	1.95	10.34	7.58	51.70

TABLE No. 17.—SHOWING PRECIPITATION, YEARS 1918-19 (IN INCHES)—Continued.

Station.	Year.	Jan.	Feb.	March.	April.	May.	June.	July.	Aug.	Sept.	Oct.	Nov.	Dec.	Total.
<i>Islands—Continued.</i>														
Nanaimo	1918	5.83	6.06	4.96	0.89	0.26	0.24	1.32	1.49	0.05	2.86	4.54	6.68	35.18
Nanaimo	1919	3.52	4.92	2.62	2.92	1.16	0.80	0.31	0.19	1.11	1.37	6.07	7.36	34.33
Saltspring Island	1918	6.33	6.33	3.94	0.69	0.34	0.64	1.32	1.11	0.12	3.35	6.31	7.23	42.31
Saltspring Island	1919	7.38	12.68	3.09	3.09	1.34	1.01	0.09	0.35	1.29	1.28	7.15	6.14	32.09
Sandwich	1918	11.96	16.78	6.07	4.09	1.72	1.63	2.09	2.39	0.66	4.11	5.69	7.20	51.35
Skook	1918	5.48	6.44	5.40	1.09	1.16	0.37	0.79	1.42	2.72	4.11	5.69	8.75	32.49
Skook	1919	13.48	4.24	7.48	0.78	1.14	0.27	0.19	1.42	1.65	2.41	11.11	10.44	43.51
Victoria	1918	12.70	8.23	8.48	5.71	2.44	0.60	0.41	1.78	0.16	4.13	3.73	7.15	39.79
Victoria	1919	4.05	3.87	2.79	0.55	0.70	0.33	0.48	0.18	1.35	1.30	3.53	4.79	28.33
Victoria	1919	5.81	2.75	2.22	2.90	1.79	0.53	0.02	0.34	1.35	1.30	3.53	4.79	28.33
<i>Northvea.</i>														
Alkali Lake	1918	1.75	0.50	0.34	0.63	1.60	0.42	0.95	1.44	T.	0.24	0.15	0.58	7.17
Alkali Lake	1919	M.	M.	M.	M.	M.	2.77	1.57	0.99	0.99	0.80	1.32	0.70	5.60
Bella Coola	1918	7.24	6.96	7.25	0.63	1.78	1.87	4.88	3.78	0.23	1.46	5.82	10.01	38.60
Bella Coola	1919	8.10	2.79	4.20	2.33	3.53	2.69	0.41	1.07	3.86	4.86	14.29	7.12	33.25
Chart Lake (Fort St. James)	1918	2.61	1.22	0.59	0.15	0.41	0.96	1.68	1.58	0.86	2.07	0.84	0.96	13.16
Chart Lake (Fort St. James)	1919	0.64	0.69	1.38	0.87	0.87	1.98	1.44	1.11	0.86	2.33	3.58	1.69	17.24
New Hazelton	1918	1.95	0.88	1.18	0.49	1.42	2.22	1.83	2.24	0.71	2.03	1.49	1.17	18.41
New Hazelton	1919	0.63	0.10	0.50	0.35	1.69	2.69	1.32	1.62	1.24	3.26	3.72	0.82	16.76
Prince George	1918	3.86	0.35	1.74	0.91	0.38	2.03	0.52	3.03	0.04	2.05	0.09	1.39	15.96
Prince George	1919	10.92	5.65	9.13	4.86	2.12	4.75	3.09	8.28	2.20	14.84	10.29	10.61	64.76
Prince Rupert	1918	0.75	0.60	0.0	0.38	1.27	2.94	1.18	1.11	1.94	3.74	5.00	2.16	24.38
Prince Rupert	1919	4.17	3.49	2.53	1.24	2.49	3.24	3.72	3.55	1.36	2.61	3.71	10.35	43.19
Terrace	1918	0.51	1.77	1.68	0.90	2.44	0.99	0.93	1.29	1.28	3.11	6.20	10.35	12.51
Terrace	1919	3.52	1.79	1.50	0.26	0.30	2.01	1.16	0.41	0.18	1.53	3.16	0.35	16.60
Vanderhoof	1918	0.64	0.60	1.15	0.35	0.30	2.01	1.16	0.41	0.18	1.53	3.16	0.35	16.60
Vanderhoof	1919	0.64	0.60	1.15	0.35	0.30	2.01	1.16	0.41	0.18	1.53	3.16	0.35	16.60

TABLE No. 18.—SHOWING PRECIPITATION, YEARS 1918-19.

Station.	1918.		1919.	
	Rainfall	Snowfall.	Rainfall.	Snowfall.
<i>East Kootenay.</i>				
	Inches.	Inches.	Inches.	Inches.
Cranbrook	10.84	20.75	7.02	68.50
Creston	15.80	40.50	10.24	91.25
Garden	12.45	43.00	4.50	77.50
Wilmer	9.43	42.50	7.00	33.75
<i>West Kootenay.</i>				
Glacier	18.01	550.00	16.00	378.00
Nakusp	13.88	121.00	15.41	119.25
Nelson	23.03	60.50	15.75	92.00
Revelstoke	26.85	214.50	16.25	174.00
Rossland	21.43	80.75	15.00	118.55
<i>Boundary.</i>				
Grand Forks	12.88	45.50	7.51	50.10
Hedley	8.73	30.45	9.02	41.70
<i>Okanagan Valley.</i>				
Armstrong	13.05	37.50	8.70	53.50
Enderby	13.05	60.25	0.35	60.25
Kelowna	10.65	26.05	5.00	54.80
Penticton	8.40	7.10	7.40	17.70
Summerland	6.54	23.20	4.10	40.45
Vernon	10.05	35.80	8.05	53.30
<i>Thompson Watershed.</i>				
Kamloops	8.13	29.00	5.88	40.75
Salmon Arm	10.81	100.50	9.75	60.00
Tranquille	4.20	23.55
<i>Lower Mainland.</i>				
Agassiz	77.83	51.50	70.03	60.00
Chilliwack	62.30	30.50	55.64	62.50
Coquitlam	78.40	26.10	64.00	21.00
Ladner	37.45	5.50	41.10	7.50
North Nicomen	78.15	16.00	68.30	51.40
Vancouver	58.51	42.00	54.01	32.00
<i>Islands.</i>				
Alberni	80.10	10.00	73.46	15.65
Clayoquot	133.37	6.00	100.00	..
Cowichan	40.86	15.50	41.83	3.00
Goldstream	60.95	88.50	58.27	54.50
Ladysmith	42.93	16.25	50.37	13.25
Nanaimo	54.68	5.00	34.01	3.40
Salt Spring Island	40.61	17.00	38.82	7.75
Sandwich	56.05	10.00	50.20	23.00
Sooke	38.83	7.75	62.24	15.50
Victoria	28.83	1.80	28.20	0.40
<i>Northern.</i>				
Alkali Lake	4.14	30.25
Bella Coola	51.00	64.00	50.52	47.25
Stuart Lake (Fort St. James)	7.70	53.60	10.14	71.00
New Hazelton	14.52	38.00	12.77	30.85
Prince George	0.80	61.00	11.00	135.00
Prince Rupert	86.00	76.75	82.14	44.40
Terrace	38.70	64.00	34.03	68.75
Vanderhoof	8.05	56.50	3.33	70.50

TABLE No. 19.—SHOWING HIGHEST AND LOWEST TEMPERATURES, YEARS 1918-19.

Station.	1918.		1919.	
	Highest.	Lowest.	Highest.	Lowest.
Agassiz	91.0	15.0	92.0	8.0
Alberni	94.0	10.0	101.0	0.0
Armstrong	101.0	-23.0	100.5	-20.0
Bella Coola	89.0	5.0	86.0	1.0
Chilliwack	90.0	15.0	88.0	2.0
Clayoquot	70.0	25.0	71.0	15.0
Cowichan	91.4	15.5	84.0	0.5
Cranbrook	89.0	-28.0	88.0	-34.0
Creton	91.0	-10.0	100.0	-1.0
Enderby	99.0	-21.0	100.0	-24.0
Glacier	80.0	-20.0	81.0	-22.0
Golden	104.0	-20.0	95.0	-32.0
Grand Forks	103.0	-13.0	102.0	-20.0
Hedley	102.0	-11.0	102.0	-15.0
Kamloops	102.0	-14.5	102.1	-21.0
Kelowna	94.0	-5.0	100.0	-10.0
Ladner	82.0	17.0	79.0	0.0
Ladysmith	98.0	12.0	85.0	9.0
Nakusp	95.5	-0.0	91.0	-8.0
Nanaimo	90.0	18.0	83.2	10.5
Nelson	95.0	-3.0	98.4	-11.2
New Hazelton	93.0	-21.0	85.0	-34.0
North Nicomen	93.0	13.0	90.0	4.0
Pentlcton	90.0	2.0	104.0	-3.0
Prince George	83.5	-54.0	88.0	-98.0
Prince Rupert	81.0	11.0	77.0	6.0
Revelstoke	95.0	-15.0	101.0	-22.0
Rossland	101.5	-4.5	89.5	-11.0
Salmon Arm	100.0	-14.0	101.0	-17.0
Salispring Island	100.0	20.0	85.0	14.0
Sooke	85.0	22.0
Stuart Lake (Fort St. James)	12.0	-48.5	88.5	-40.0
Summerland	117.0	-7.0	108.0	-12.0
Terrace	90.0	-2.0	85.0	-0.0
Tranquille	100.0	-12.0	101.0	-18.0
Vancouver	83.4	17.4	81.3	11.2
Vanderhoof	94.0	-50.0	84.0	-41.0
Vernon	97.0	-13.0	102.0	-21.0
Victoria	82.8	23.2	84.5	15.5
Wilmer	95.0	-23.0	105.0	-28.0

TABLE No. 20.—NUMBERS OF FARM TRACTORS IN BRITISH COLUMBIA, YEAR 1919.

District.	No.
Islands	44
Lower Mainland	78
Thompson	31
Okanagan and Boundary	54
East and West Kootenay	40
Northern	76
Total	322

VICTORIA, B.C.:

Printed by WILLIAM H. CULLIN, Printer to the King's Most Excellent Majesty,
1020.

