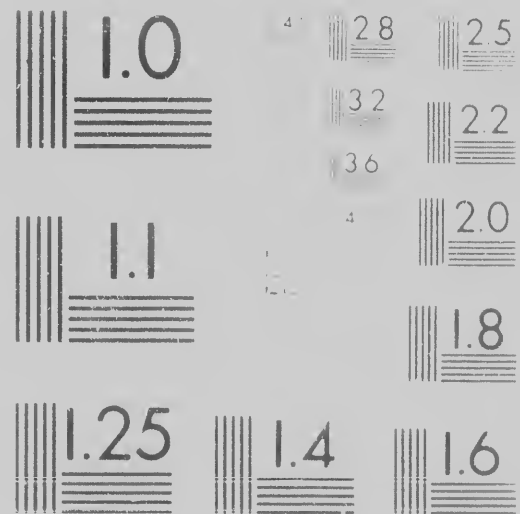
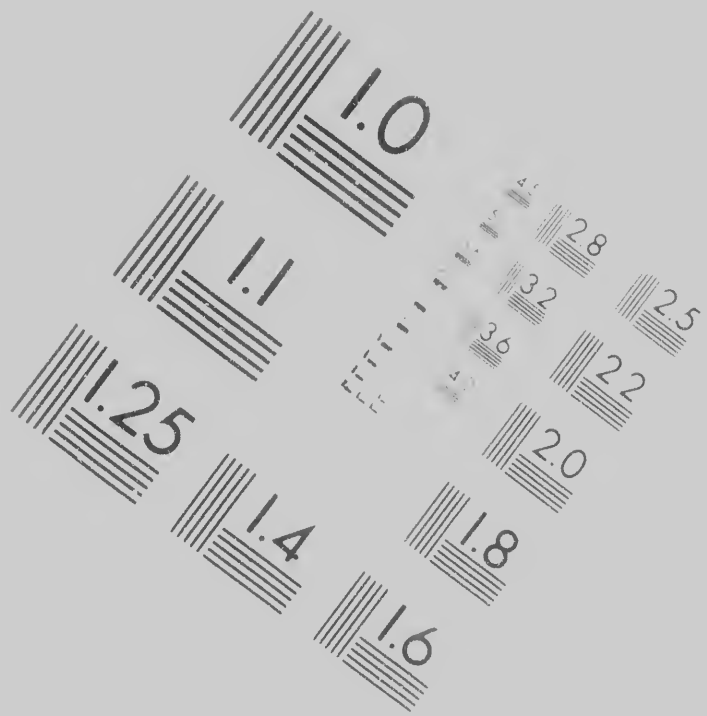


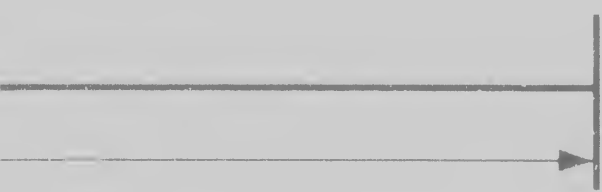
# IMAGE EVALUATION TEST TARGET (MT-3)





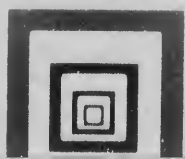
**CIHM/ICMH  
Microfiche  
Series.**

2  
3)



ICMH  
fiche  
s.

CIHM/ICMH  
Collection de  
microfiches.



T  
c  
o  
v  
r  
r  
t



Technical and Bibliographic Notes/Notes techniques et bibliographiques

The Institute has attempted to obtain the best original copy available for filming. Features of this copy which may be bibliographically unique, which may alter any of the images in the reproduction, or which may significantly change the usual method of filming, are checked below.

L'Institut a microfilmé le meilleur qu'il lui a été possible de se procurer de cet exemplaire qui sont peut-être de ce point de vue bibliographique, ou qui peuvent modifier une image reproduite, ou qui peuvent nécessiter une modification dans la méthode normale de microfilmage, sont indiqués ci-dessous.

Coloured covers/  
Couverture de couleur

Coloured pages/  
Pages de couleur

Covers damaged/  
Couverture endommagée

Pages damaged/  
Pages endommagées

Covers restored and/or laminated/  
Couverture restaurée et/ou pelliculée

Pages restored and/or laminated/  
Pages restaurées et/ou pelliculées

Cover title missing/  
Le titre de couverture manque

Pages discoloured, stained, foxed/  
Pages décolorées, tachetées, jaunies

Coloured maps/  
Cartes géographiques en couleur

Pages detached/  
Pages détachées

Coloured ink (i.e. other than blue or black)/  
Encre de couleur (i.e. autre que bleue ou noire)

Showthrough/  
Transparence

Coloured plates and/or illustrations/  
Planches et/ou illustrations en couleur

Quality of print varies/  
Qualité inégale de l'impression

Bound with other material/  
Relié avec d'autres documents

Includes supplementary material/  
Comprend du matériel supplémentaire

Tight binding may cause shadows or distortion along interior margin/  
La reliure serrée peut causer de l'ombre ou de la distorsion le long de la marge intérieure

Only edition available/  
Seule édition disponible

Pages wholly or partially obscured by binding, etc.

bibliographiques

rofilmé le meilleur exemplaire  
ossible de se procurer. Les détails  
aire qui sont peut-être uniques du  
bliographique, qui peuvent modifier  
oduite, ou qui peuvent exiger une  
ans la méthode normale de filmage  
i-dessous.

pages/  
couleur

amaged/  
dommagées

tored and/or laminated/  
taurées et/ou pelliculées

coloured, stained or foxed/  
colorées, tachetées ou piquées

ached/  
achées

ugh/  
nce

print varies/  
égale de l'impression

upplementary material/  
du matériel supplémentaire

on available/  
on disponible

olly or partially obscured by errata

The copy filmed here has been reproduced thanks to the generosity of:

Library of Congress  
Photoduplication Service

The images appearing here are the best quality possible considering the condition and legibility of the original copy and in keeping with the filming contract specifications.

Original copies in printed paper covers are filmed beginning with the front cover and ending on the last page with a printed or illustrated impression, or the back cover when appropriate. All other original copies are filmed beginning on the first page with a printed or illustrated impression, and ending on the last page with a printed or illustrated impression.

Maps, plates, charts, etc., may be filmed at different reduction ratios. Those too large to be entirely included in one exposure are filmed beginning in the upper left hand corner, left to right and top to bottom, as many frames as required. The following diagrams illustrate the method:



reproduced thanks

L'exemplaire filmé fut reproduit grâce à la  
générosité de:

ss  
Service

Library of Congress  
Photoduplication Service

the best quality  
on and legibility  
ing with the

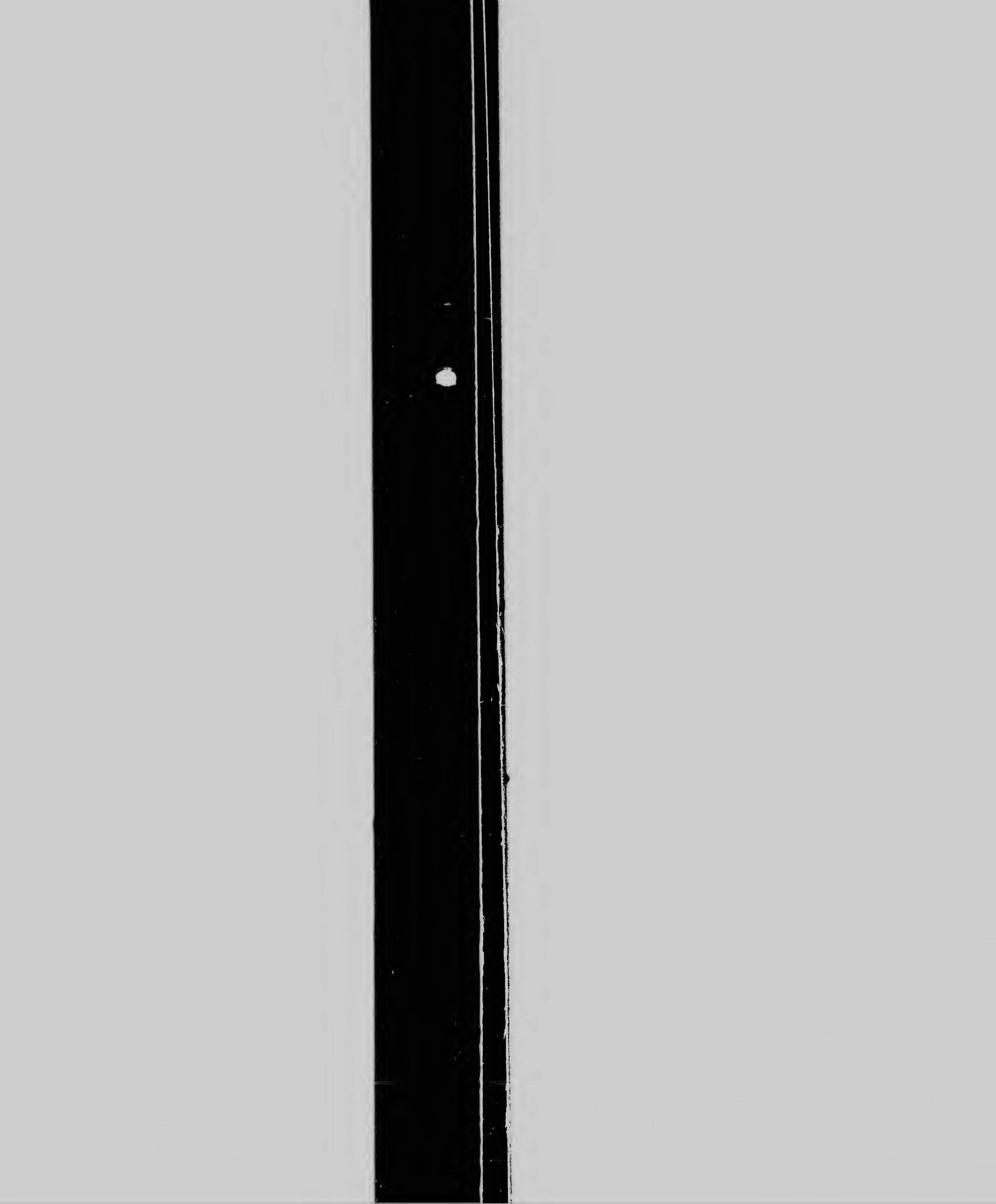
Les images suivantes ont été reproduites avec le  
plus grand soin, compte tenu de la condition et  
de la netteté de l'exemplaire filmé, et en  
conformité avec les conditions du contrat de  
filimage.

covers are filmed  
nd ending on  
ustrated impres-  
ropriate. All  
beginning on the  
rated impres-  
e with a printed

Les exemplaires originaux dont la couverture en  
papier est imprimée sont filmés en commençant  
par le premier plat et en terminant soit par la  
dernière page qui comporte une empreinte  
d'impression ou d'illustration, soit par le second  
plat, selon le cas. Tous les autres exemplaires  
originaux sont filmés en commençant par la  
première page qui comporte une empreinte  
d'impression ou d'illustration et en terminant par  
la dernière page qui comporte une telle  
empreinte.

be filmed at  
too large to be  
e are filmed  
corner, left to  
y frames as  
s illustrate the

Les cartes, planches, tableaux, etc., peuvent être  
filmés à des taux de réduction différents.  
Lorsque le document est trop grand pour être  
reproduit en un seul cliché, il est filmé à partir  
de l'angle supérieur gauche, de gauche à droite,  
et de haut en bas, en prenant le nombre  
d'images nécessaire. Les diagrammes suivants  
illustrent la méthode.





# Buffalo

BETWEEN

Buffalo, Brantford

Intermediate Stations

FROM BUFFALO TO

FORT ERDRE ..... 100

RIDGEWAY ..... 100

FORT COLBOURN ..... 100

WAINFLEET CENTRAL ..... 100

W. CANAL FIELD ..... 100

DUNVILLE ..... 100

CAYUGA ROAD ..... 100

CALEDONIA ..... 100

ONONDAGO ..... 100

UPPER CAYUGA ..... 100

BRANTFORD ..... 100

Includes the following:

Apples.

Alc. in casks or bbls,  
weather.

Alcohol in wood.

Beer in casks or bbls,  
weather.

Boiler Plate.

Bul. Hoop and Rod.

Bacon and Hams.

Butter.

Beef, fresh, in casks or  
bbls, salted.

Canned.

Corn.

Cattle.

Coal.

Flour.

Grain.

Horses in lot

per mile, single 4 cent  
round in the bush of 10

1854.

# Buffalo, Brantford & Goderich Railway

## FREIGHT TARIFF.

BE TWEEN	Price per 100 lbs.			Special Class			
	1st Class	2d Class	Wheat, Corn, Rye & Barley, in Bags, per bush.	Flour, Potatoes, & Hard Barley, per bush.	Lard, Fat Lard & Whiskey, per 100 lbs.	Bacon, Butter, Pickled Cabbages, per 100 lbs.	Stocks, per 100 lbs.
Buffalo, Brantford.							
Intermediate Stations.							
FROM BUFFALO TO	Cts.	Cts.	Cts.	Cts.	Cts.	Cts.	Cts.
FORT ERDEN	3	8	6		10	17	10
RIDGEWAY	11	11	8		17	24	18
PORT COLBOURN	21	15	10		26	33	26
WAINFLEET CENTRE	27	18	12		33	40	33
W. CANAL FIELDS	34	20	14	7	40	47	40
DUNVILLE	40	22	15	7	48	55	48
CAYUGA ROAD	49	26	17	8	56	63	56
CALEDONIA	60	30	20	8	64	71	64
ONONDAGA	67	35	21	9	72	79	72
UPPER CAYUGA	74	38	26	9	80	87	80
BRANTFORD	77	40	27	10	88	95	88

### FIRST CLASS.

The following and all other articles not enumerated will be rated in this Class.

- Articles, at owner's risk of breakage.
- Bags.
- Articles, at owner's risk of damage.
- Iron and Steel.
- Carriage and Coach, at owner's risk of breakage.
- Coals.
- Drum Casks.
- Iron Stoves.
- Fire Woods in bales and bbls.
- Carriage Tools.
- Fruit, dried.
- Furniture, at owner's risk of breakage.
- Fish in bark, salted.
- Groceries.
- Hardware.
- Rugs.
- Seeds.
- Stationery.
- Wool.

### SECOND CLASS,

Includes the following articles:

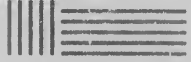
- Apples.
- Ale in casks or bbls, at owner's risk of weather.
- Alcohol in wood.
- Bee, in casks or bbls, at owner's risk of weather.
- Boiler Plates.
- Bar, Hoop and Rod Iron.
- Bacon and Hams.
- Butter.
- Beef, fresh, at owner's risk of weather.
- Beef, salted.
- Chests.

- Cheese, at owner's risk of weather.
- Crockery in crates or bbls.
- Eggs in packages, at owner's risk of breakage.
- Earthen Ware.
- Flour in bags.
- Fish in bbls and boxes.
- Hops.
- Hemp at owner's risk of damage.
- Hoofs and Horns.
- Lard.
- Liquors in casks.
- Lead Pipe.

- Nails, Spikes and Rivets.
- Oils.
- Oysters and Clams.
- Okum in bales.
- Pork in the box.
- Paint.
- Ploughs.
- Pitch.
- Put and Pearl Ashes.
- Resin.
- Sugar.
- Tallow.
- Ten.

Carriage, Wagons and Sleighs double, 6 cents per mile, single, 4 cents per mile. Cows, 10 cents per mile. They must be secured against Chating or Fire, and will only be carried at the risk of owners.

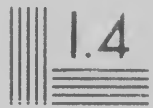




1.8



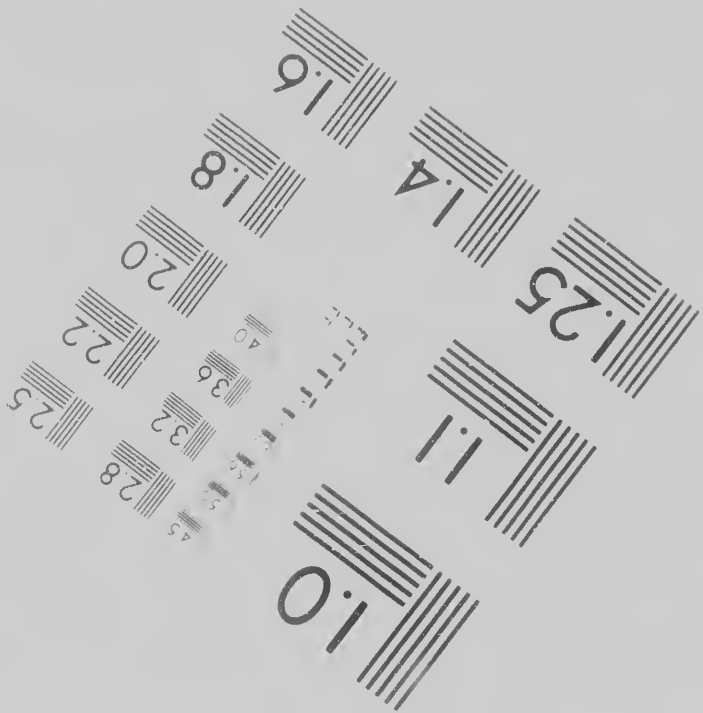
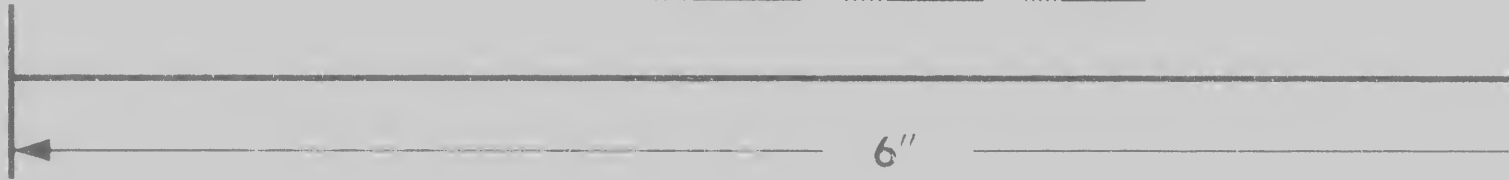
1.25



1.4

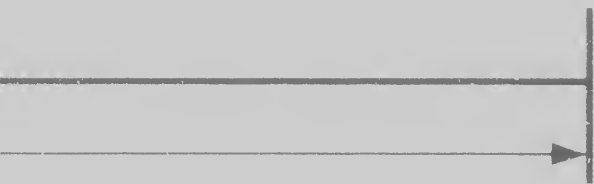


1.6

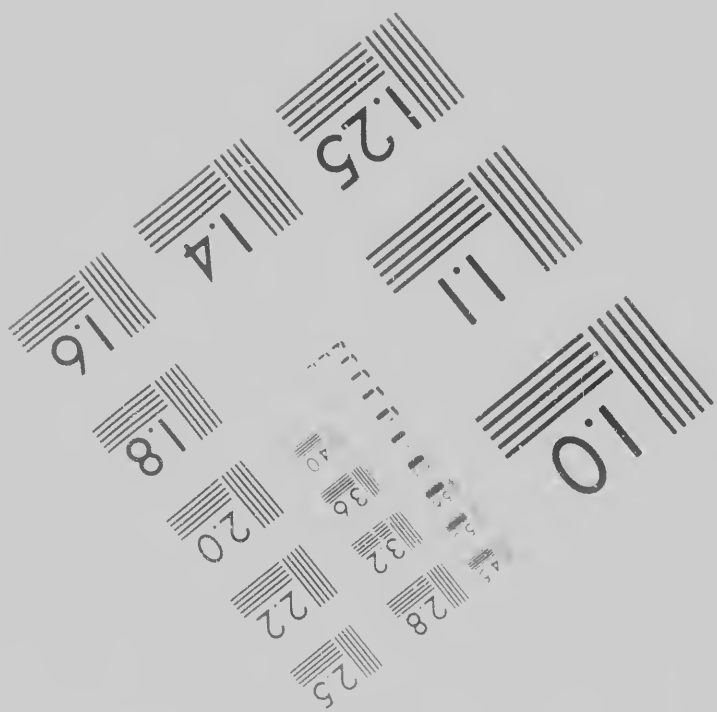


# Photographic Sciences Corporation

23 WEST MAIN STREET  
WEBSTER, N.Y. 14580  
(716) 872-4503



Canadian Institute for Historical Microrepro



MAIN STREET  
N.Y. 14580  
872-4503





ical Microreproductions / Institut canadien de microreproductions historiques

1986



TH  
Ce

1



Planches et/ou illustrations en couleur

Qualité inégale de l'impression

Bound with other material/  
Relié avec d'autres documents

Includes supplementary material  
Comprend du matériel supplémentaire

Tight binding may cause shadows or distortion  
along interior margin/  
La reliure serrée peut causer de l'ombre ou de la  
distorsion le long de la marge intérieure

Only edition available/  
Seule édition disponible

Blank leaves added during restoration may  
appear within the text. Whenever possible, these  
have been omitted from filming/  
Il se peut que certaines pages blanches ajoutées  
lors d'une restauration apparaissent dans le texte,  
mais, lorsque cela était possible, ces pages n'ont  
pas été filmées.

Pages wholly or partially  
obscured by slips, tissues, etc., have been  
refilmed to ensure the best possible image.  
Les pages totalement ou partiellement  
obscurcies par un feuillet de papier,  
etc., ont été filmées à nouveau pour  
obtenir la meilleure image possible.

Additional comments: / CIHM no. 60406  
Commentaires supplémentaires.

This item is filmed at the reduction ratio checked below /  
Ce document est filmé au taux de réduction indiqué ci-dessous.

10X		14X		18X		22X		26X	
			<input checked="" type="checkbox"/>						
	12X			16X		20X		24X	28X

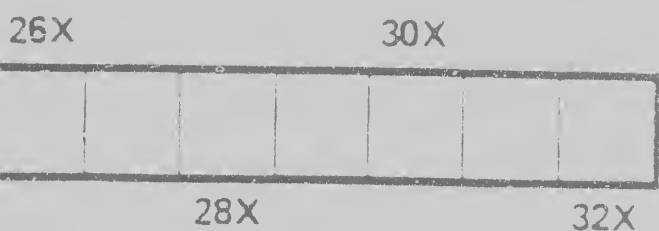


égale de l'impression

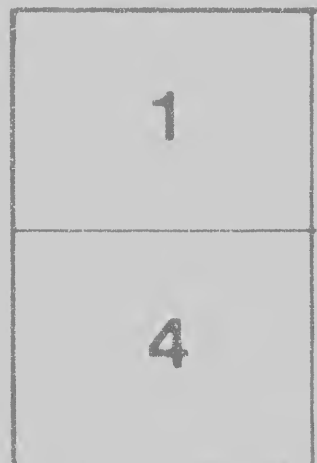
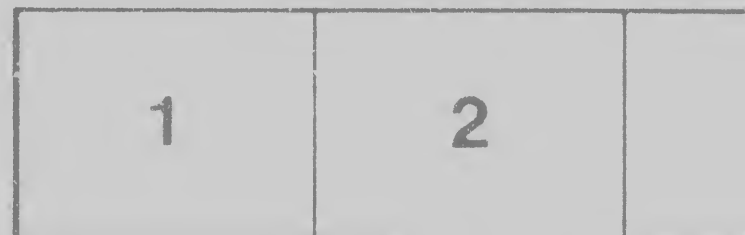
Supplementary material/  
du matériel supplémentaire

on available/  
on disponible

olly or partially obscured by errata  
es, etc., have been refilmed to  
best possible image/  
totalement ou partiellement  
par un feuillet d'errata, une pelure  
é filmées à nouveau de façon à  
meilleure image possible.



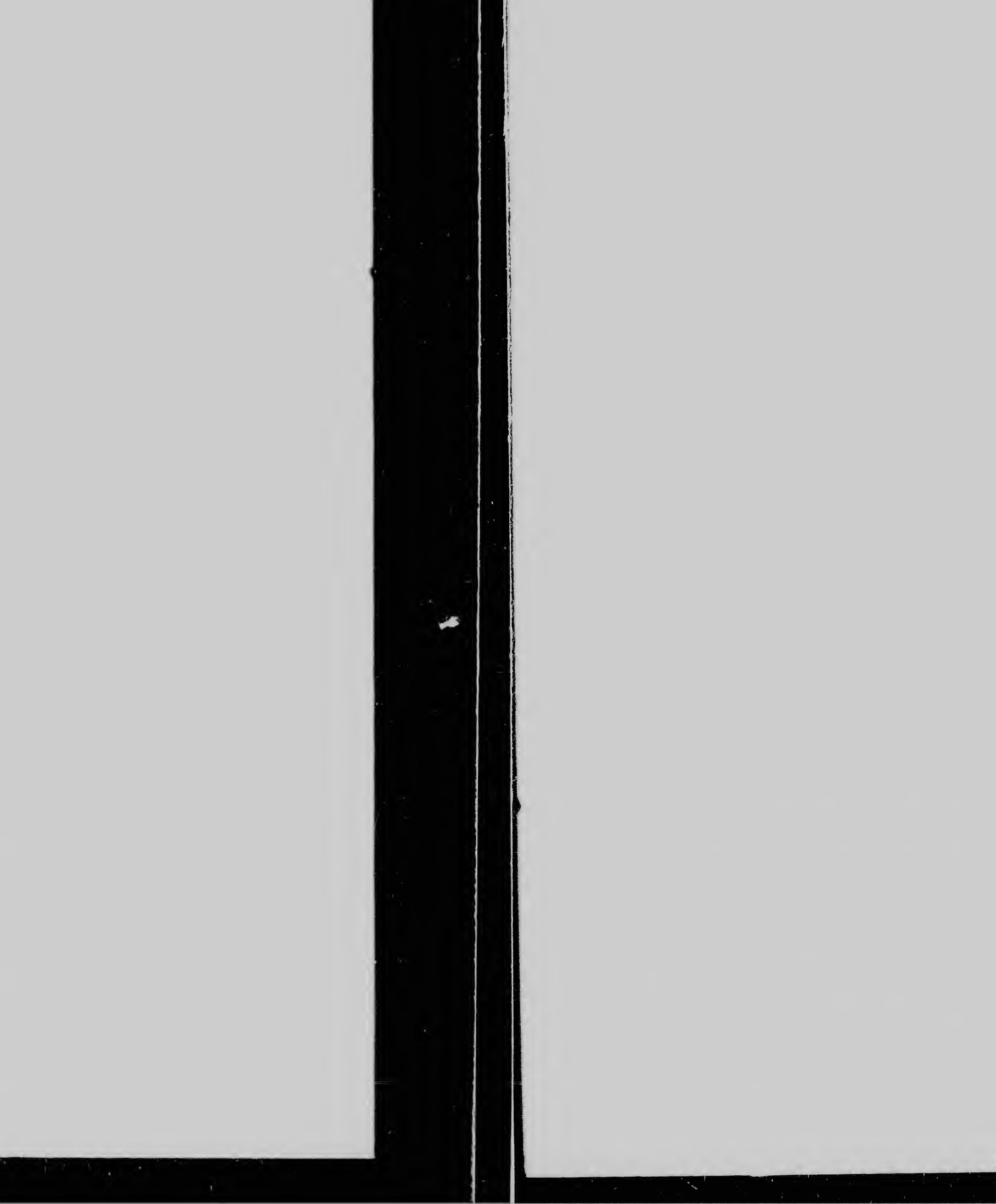
different reduction ratios. Those too large to be  
entirely included in one exposure are filmed  
beginning in the upper left hand corner, left to  
right and top to bottom, as many frames as  
required. The following diagrams illustrate the  
method:



too large to be  
are filmed  
corner, left to  
y frames as  
illustrate the

filmés à des taux de réduction différents.  
Lorsque le document est trop grand pour être  
reproduit en un seul cliché, il est filmé à partir  
de l'angle supérieur gauche, de gauche à droite,  
et de haut en bas, en prenant le nombre  
d'images nécessaire. Les diagrammes suivants  
illustrent la méthode.







...  
...  
...  
...  
...  
...  
...  
...  
...  
...  
...  
...

L...  
...  
...  
...  
...  
...  
...  
...  
...  
...  
...  
...

...  
...  
...  
...  
...  
...  
...  
...  
...  
...  
...  
...

...  
...  
...  
...  
...  
...  
...  
...  
...  
...  
...

# **CONDITIONS AND RULES.**

12. The Company will not take charge of any Bank Notes, Drafts, Certificates, or other writings, or be responsible for their loss.

21. No Commissions or Agents of the company is authorized to take charge of Bank Notes, Money, or other valuable papers.  
22. No Gold or Silver Coins, or Bullion, or manufactured articles of Gold or Silver, Jewels, Watches, Plated articles, Silk or Lace, will be carried by the company, unless a memorandum be delivered with such articles, stating their kind and value, and a proper extra price for the carriage or, and responsibility for, the same, be paid.

23. Gun Powder, Matches, and the like combustible articles, will not be taken on any of our boats if found stored on among other goods, they will be forfeited, and the consignor will be held liable for any damage caused thereby.

24. Articles will not be received for transportation unless properly packed in suitable packages, on which the consigner's name and destination of the goods are clearly and distinctly marked. These packages should be stamped on the outside with "Freight" and "Black Rock."

25. The company will not be held responsible for loss or damage to goods by fire, theft, or any other cause, if such articles are properly packed and properly secured on board.

26. The company will not be responsible for damage to goods caused by any leak or other defect in the vessel, or by any fault in the stowage or packing of the goods, or by any fault in the handling of the goods on board, or by any fault in the stowage or packing of the goods on shore.

27. The company will not be held responsible for any loss or damage to goods by fire, theft, or any other cause, if such articles are properly packed and properly secured on board.

28. Casks containing live stock will be charged for and goods not taken on any of our boats if found stored on among other goods, they will be forfeited, and the consignor will be held liable for any damage caused thereby.

29. No cargo of less than 100 lbs. will be made for any of our boats.

30. The company will not be responsible for the breakage or loss of goods, or for any loss of National Stores, unless it is shown that the contents of packages, not for breakage or loss, were properly packed, and that the loss or National Stores, was not caused by any fault in the stowage or packing of the goods, or by any fault in the handling of the goods on board, or by any fault in the stowage or packing of the goods on shore.

31. Cans for Live Stock, Lumber, Staves, or other articles, shall be secured and properly packed, and the company will not be held responsible for any loss or damage to goods by fire, theft, or any other cause, if such articles are properly packed and properly secured on board.

32. One day only will be allowed for loading and unloading goods, unless a special agreement be made with the owner of the cargo, and the company will not be held responsible for any loss or damage to goods by fire, theft, or any other cause, if such articles are properly packed and properly secured on board.

33. Charges for goods must be paid in advance of the goods, and the company will not be held responsible for any loss or damage to goods by fire, theft, or any other cause, if such articles are properly packed and properly secured on board.

## **JOHN BANNERMAN, Freight Agent.**

Goods for this Line going West will be received at the Freight Depot of the B. & N. Falls R. R., on Sixth St. or on board the Company's Propellor at Black Rock.

### **WM. WALLACE, Sup't.**

Black Rock, 12th January

