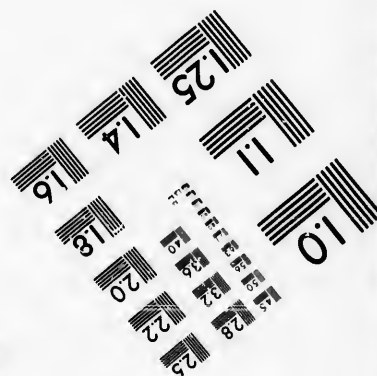
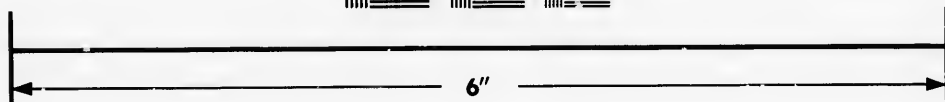
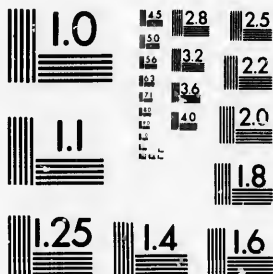


**IMAGE EVALUATION  
TEST TARGET (MT-3)**



**Photographic  
Sciences  
Corporation**

23 WEST MAIN STREET  
WEBSTER, N.Y. 14580  
(716) 872-4503

18 20 22 25  
15 16 18 20 22 25  
12 14 16 18 20 22 25

**CIHM/ICMH  
Microfiche  
Series.**

**CIHM/ICMH  
Collection de  
microfiches.**



Canadian Institute for Historical Microreproductions / Institut canadien de microreproductions historiques

01  
02  
03  
04  
05  
06  
07  
08  
09  
10

**© 1987**

Technical and Bibliographic Notes/Notes techniques et bibliographiques

The Institute has attempted to obtain the best original copy available for filming. Features of this copy which may be bibliographically unique, which may alter any of the images in the reproduction, or which may significantly change the usual method of filming, are checked below.

L'Institut a microfilmé le meilleur exemplaire qu'il lui a été possible de se procurer. Les détails de cet exemplaire qui sont peut-être uniques du point de vue bibliographique, qui peuvent modifier une image reproduite, ou qui peuvent exiger une modification dans la méthode normale de filmage sont indiqués ci-dessous.

- Coloured covers/  
Couverture de couleur
- Covers damaged/  
Couverture endommagée
- Covers restored and/or laminated/  
Couverture restaurée et/ou pelliculée
- Cover title missing/  
Le titre de couverture manque
- Coloured maps/  
Cartes géographiques en couleur
- Coloured ink (i.e. other than blue or black)/  
Encre de couleur (i.e. autre que bleue ou noire)
- Coloured plates and/or illustrations/  
Planches et/ou illustrations en couleur
- Bound with other material/  
Relié avec d'autres documents
- Tight binding may cause shadows or distortion  
along interior margin/  
La reliure serrée peut causer de l'ombre ou de la  
distorsion le long de la marge intérieure
- Blank leaves added during restoration may  
appear within the text. Whenever possible, these  
have been omitted from filming/  
Il se peut que certaines pages blanches ajoutées  
lors d'une restauration apparaissent dans le texte,  
mais, lorsque cela était possible, ces pages n'ont  
pas été filmées.
- Additional comments:/  
Commentaires supplémentaires:

- Coloured pages/  
Pages de couleur
- Pages damaged/  
Pages endommagées
- Pages restored and/or laminated/  
Pages restaurées et/ou pelliculées
- Pages discoloured, stained or foxed/  
Pages décolorées, tachetées ou piquées
- Pages detached/  
Pages détachées
- Showthrough/  
Transparence
- Quality of print varies/  
Qualité inégale de l'impression
- Includes supplementary material/  
Comprend du matériel supplémentaire
- Only edition available/  
Seule édition disponible
- Pages wholly or partially obscured by errata  
slips, tissues, etc., have been refilmed to  
ensure the best possible image/  
Les pages totalement ou partiellement  
obscurcies par un feuillet d'errata, une pelure,  
etc., ont été filmées à nouveau de façon à  
obtenir la meilleure image possible.

This item is filmed at the reduction ratio checked below/  
Ce document est filmé au taux de réduction indiqué ci-dessous.

10X	12X	14X	16X	18X	20X	22X	24X	26X	28X	30X	32X
						✓					

tails  
du  
odifier  
une  
image

The copy filmed here has been reproduced thanks to the generosity of:

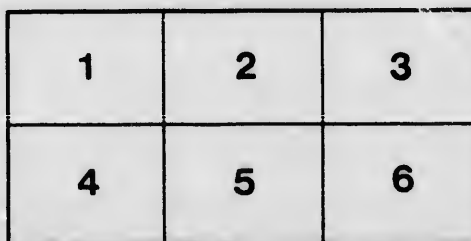
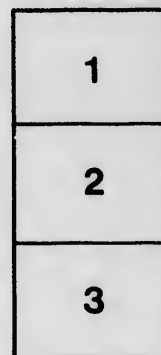
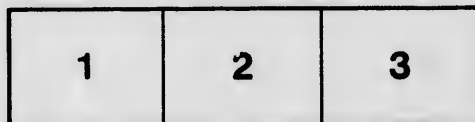
Seminary of Quebec  
Library

The images appearing here are the best quality possible considering the condition and legibility of the original copy and in keeping with the filming contract specifications.

Original copies in printed paper covers are filmed beginning with the front cover and ending on the last page with a printed or illustrated impression, or the back cover when appropriate. All other original copies are filmed beginning on the first page with a printed or illustrated impression, and ending on the last page with a printed or illustrated impression.

The last recorded frame on each microfiche shall contain the symbol → (meaning "CONTINUED"), or the symbol ∇ (meaning "END"), whichever applies.

Maps, plates, charts, etc., may be filmed at different reduction ratios. Those too large to be entirely included in one exposure are filmed beginning in the upper left hand corner, left to right and top to bottom, as many frames as required. The following diagrams illustrate the method:



L'exemplaire filmé fut reproduit grâce à la générosité de:

Séminaire de Québec  
Bibliothèque

Les images suivantes ont été reproduites avec le plus grand soin, compte tenu de la condition et de la netteté de l'exemplaire filmé, et en conformité avec les conditions du contrat de filmage.

Les exemplaires originaux dont la couverture en papier est imprimée sont filmés en commençant par le premier feuillet et en terminant soit par le dernier page qui comporte une empreinte d'impression ou d'illustration, soit par le second feuillet, selon le cas. Tous les autres exemplaires originaux sont filmés en commençant par la première page qui comporte une empreinte d'impression ou d'illustration et en terminant par la dernière page qui comporte une telle empreinte.

Un des symboles suivants apparaîtra sur la dernière image de chaque microfiche, selon le cas: le symbole → signifie "A SUIVRE", le symbole ∇ signifie "FIN".

Les cartes, planches, tableaux, etc., peuvent être filmés à des taux de réduction différents. Lorsque le document est trop grand pour être reproduit en un seul cliché, il est filmé à partir de l'angle supérieur gauche, de gauche à droite, et de haut en bas, en prenant le nombre d'images nécessaire. Les diagrammes suivants illustrent la méthode.

rrata  
o

belure,  
n à

284 Hist du can N° 11



Bibliothèque  
Le Séminaire  
3, rue de l'Univ  
Québec 4, QUB



D. BATTERSBY,  
Agent.

178 St. James St. Montreal,  
1000, Temple Bldg

**LINDSAY-NORDHEIMER CO.**

**Steinway  
Nordheimer Pianos**

2366 St. Catherine Street,  
**MONTREAL.**

---

This firm supplies a beautiful HEINTZMAN & CO.  
Upright Piano for the steamer "SOVEREIGN." We take  
pleasure in referring our patrons to the firm.

---

**Copley,**

132 Sparks St.

Ottawa.



Portraits. Views.

**Kodaks.**

Photo. Supplies.

---

**Tourists**

AND OTHERS, WILL FIND  
ALL THEY REQUIRE IN

**Medicines, Toilet Articles, &c.**

... AT ...

**R. A. McCORMICK'S**

**... DRUG STORE ...**

75 Sparks St.

... OTTAWA.

---

**PRESCRIPTIONS A SPECIALTY.**

---

Telephone 159.

D. BATTERSBY,  
Agent,  
178 St. James St. Montreal,  
opp. Temple Bld'g.

...THE...

OTTAWA RIVER NAVIGATION CO.



# SNAP SHOTS

ON THE

OTTAWA RIVER

AND

RIDEAU LAKES

WITH MANY

ILLUSTRATIONS OF INTERESTING PLACES AND SCENES

ALSO, A SHORT DESCRIPTION OF THE OTTAWA  
RIVER & POINTS OF INTEREST TO THE TOURIST  
WHO MAY MAKE THE TRIP VIA THE GRAND  
RIVER AND RIDEAU LAKES THROUGH THE - - -

MOST CHARMING SCENERY IN AMERICA

BETWEEN

MONTREAL, OTTAWA AND KINGSTON.



MONTREAL :

DESBARATS & CO., ENGRAVERS AND PRINTERS.

1899



Steamer "Sovereign" shooting Lachine Rapids.



nu  
ar  
to  
en  
ga

fr  
La  
an  
fo  
ar

tiv  
a  
aw  
an  
th  
ad

ex  
fr  
an  
as  
CH  
vo  
th  
tw  
dif  
In  
an  
hi  
rea  
sh  
as  
ret  
an



## THE OTTAWA.



HIS noble river, known to the old *voyageurs* and early settlers as the "Grand River," is upwards of six hundred miles long, and has twenty tributaries of large size, besides numerous smaller ones. Beautiful, wonderful, lovely, are not extravagant or ridiculous adjectives when used to express the delight of those who, for the first time, enjoy a trip on the steamers of the Ottawa River Navigation Company.

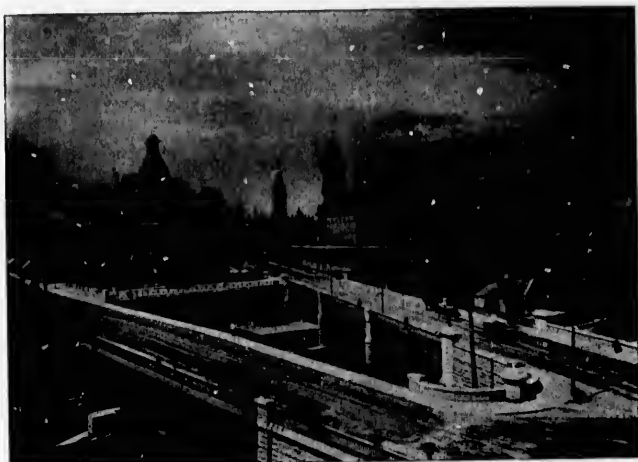
The Ottawa is broader two hundred and eighty miles from its mouth than it is between Ottawa city and the Lake of Two Mountains, and flows with such a strong and deep flood that the green waters of the St. Lawrence, for many miles below the confluence of the two rivers, are pressed against the southern shores.

Coming from the Far North, from regions comparatively little known, even at the present day, there is a certain mystery about this "Grand" river which awakens our curiosity and engenders a spirit of romance, and, as we ascend its current, the beautiful islands and the picturesque scenery of its banks command our admiration.

The Ottawa was the highway of the early French explorers, missionaries and fur-traders in their journeys from Montreal to the great lakes Huron and Superior, and the Far West. It was traversed by the red man as well as the *coureurs des bois*. It was ascended by Champlain, in 1613—who was the first explorer,—on his voyage to discover what he had been led to suppose was the North Sea. During this voyage up the Ottawa, with two canoes, he experienced much hardship and many difficulties; continually menaced by wandering bands of Indians, he was at last forced to abandon his provisions and to trust entirely to hunting and fishing to provide him with the necessaries of life. Champlain finally reached the country of the Nipissing nation, on the shores of Lake Nipissing, and, finding that the Ottawa as a route to the North Sea was a mistake, he resolved to return to Quebec, which he reached, after great hardships and privations, and he soon afterwards sailed for France.

## OTTAWA.

Ottawa, the Capital City of British America, dates its origin from the commencement of the Rideau Canal, under Lieut.-Col. By, Royal Engineers, in the year 1826. Following the troops that accompanied By to the scene of operations came first the cluster of laborers' shanties which formed around the canal's eastern terminus at Entrance Bay, with the somewhat better dwellings in which the traders who furnished the necessaries of life were accommodated. Situated at the confluence of the



Glimpse at the Parliament Buildings; Post-Office and Custom House to the left.

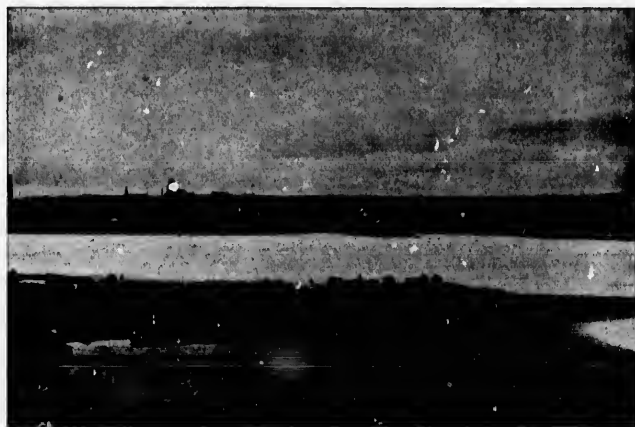
Rideau and Gatineau with the Grand River (now called the Ottawa), each of them draining districts rich in agricultural and timber resources, and just at the point where it became necessary to rearrange the rafts brought down from the immense timber regions of the Upper Ottawa on account of the impossibility of carrying them unbroken over the Chaudière Falls, the village grew rapidly to be a town of importance. In 1854 a population of 10,000 being attained, the town was transformed by Parliament into a city under the name it has since borne, the change taking place 1st of January, 1855.

In 1857, Her Majesty fixed upon it to be the permanent seat of government of United Canada, a decision

ratified and confirmed by Parliament. In 1859 the public buildings required for the accommodation of Parliament and the Civil Service were commenced, and were completed in 1865, causing the removal to Ottawa of an army of public officials, with their families.

With the addition thereto of the population of Hull, which is practically a suburb of the political metropolis, of 11,265, the population of Ottawa stands at the present moment at 65,265. No other city east of Winnipeg has shown such a marvellous rate of growth, and warrants the belief that, at the same rate of increase, it will not be long before Ottawa will take third place among the cities of the Dominion. She now ranks second in Ontario. In point of wealth and commercial expansion and importance the development and increase go hand in hand.

The front portions of the city of Ottawa stand on a succession of bluffs, and when viewed from the river are seen to great advantage. From the high cliffs, on which its noblest buildings have been erected, can be witnessed scenes of natural beauty unsurpassed by any on the continent; rich in all the varied charms of mountain, river and forest, and enhanced by the surrounding triumphs of architectural skill. To the east the river can be seen for many miles wending its way through field and forest towards the ocean. Close at hand are the timber slides by which the square timber from the Upper Ottawa



Rafting up Timber on the Ottawa.

passes down without damage into the navigable water below. To go down these slides on a crib of timber, as almost every visitor to the capital—from the Prince of Wales, the Princess Louise, Prince Leopold (Duke of Albany), and the Grand Duke Alexis of Russia, down to the humblest individual—has done, is as exhilarating as it is exciting.

Ottawa is divided by the Rideau Canal running through it, and is laid out in wide, regular and uniform



The Chaudiere Falls, Ottawa.

streets, which are planted with shade-trees and provided with drinking-fountains. Its geographical location, when compared with other cities, makes Ottawa one of the most easily accessible cities from all points of Canada, and, with its seven railroads and many steamboat facilities, possesses more and better forwarding capabilities than any of its inland sister cities.

**Aylmer**, nine miles from Ottawa, is, on account of its delightful situation, an ideal place to spend a summer vacation. The Ottawa River, expanding into what is called Lake Deschênes at Aylmer, affords good fishing, and there is ample room on the broad face of the lake for boating of all kinds. The accompanying cuts of "One Tree Point" and Hotel Victoria will give those seeking "pastures new" an idea of what there is at and around Aylmer, Quebec, in the way of hotel accommodation and scenery. Queen's Park, which is about one

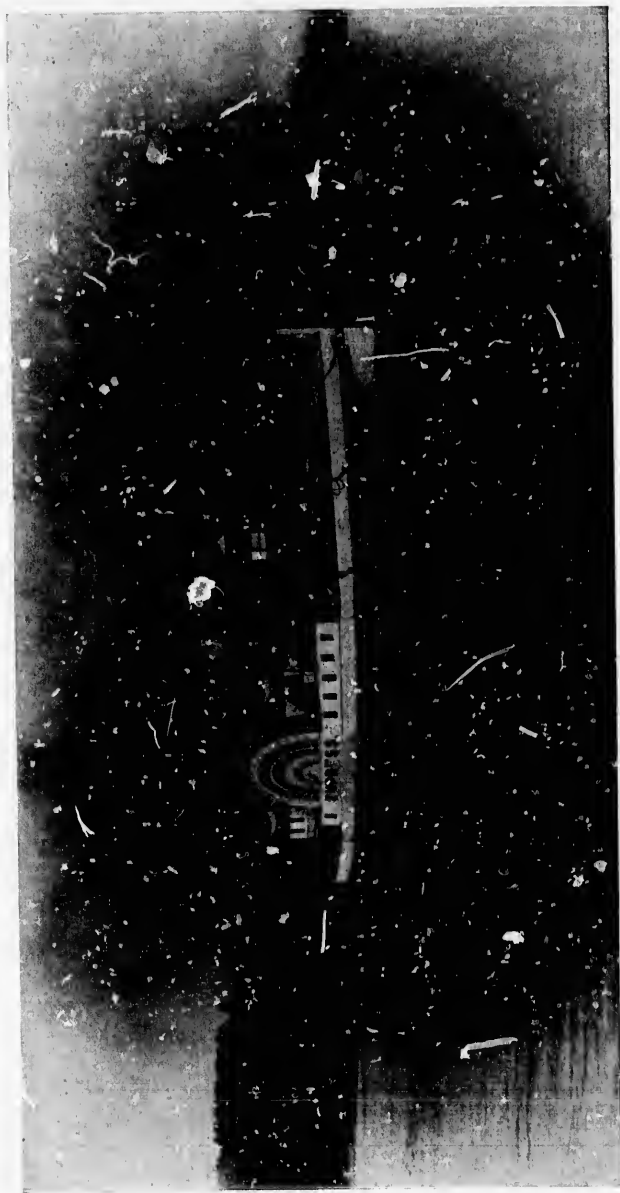


One Tree Point, Aylmer.

and one-half miles above Aylmer, is a most beautiful spot, and is well provided with means to while away many a pleasant hour; among its attractions being the forest, promenade pier, water chute and floating promenade, the maze, fine boats and bath-houses. The Hull Electric Company's cars run through to the park, passing Aylmer and Hotel Victoria *en route*. Steamboat excursions are run twice a week—Wednesdays and Saturdays—from Queen's Park to the beautiful Chats Rapids, passing through some of the loveliest scenery in Canada, the route being part of that of the proposed Ottawa and Georgian Bay Canal. See the Hull Electric Company's advertisement at the end of this book.



Hotel Victoria, Aylmer, Que.



An Excursion Party. leaving Ottawa.

## THE TRIP BY STEAMER.



The trip by steamer, either "up the Ottawa" to the capital of the Dominion, or "down the river" to Montreal, is one of the most beautiful and charming trips in Canada. The steamers are modern steel vessels, very fleet, and well adapted for day tourist travel; commodious and comfortably furnished, and the meals are well prepared and nicely served; the officers of the Company are experienced and renowned for their politeness and attention to passengers.

Leaving the capital of the Dominion behind, the tourist will see on the north side the mouth of the Gatineau, a large and important lumbering stream, which has been surveyed for three hundred miles from its junction. The steamer touches at Templeton, on the Quebec shore, thence proceeds to

**Besserer's Wharf**, in Ontario. Here there is a very comfortable and commodious hotel, the Jubilee House, which is a new summer resort within easy access of the city of Ottawa; the special attractions being cool shades and breezes among the pine-trees on the river bank, excellent fishing and boating, and perfectly safe, agreeable bathing on the fine beach. The guests at Jubilee House no doubt thoroughly enjoy themselves at this popular resort.

Eighteen miles further, the Lièvre River, after a course of two hundred and eighty miles, falls into the Ottawa. Upon this river, four miles from the steamboat landing, is the village of Buckingham.

**Cumberland** is passed about 9.00 a.m., and the scenery here is very beautiful, the village being picturesquely situated on the rising bank of the river on the Ontario shore—*i. e.*, the right hand side.

**Rockland** is a flourishing town, having two or three large saw-mills and many fine residences; that of W. C. Edwards, M.P., the member for the county of Russell in the Dominion Parliament, and the principal proprietor of the Rockland Mills, being one of the most complete on the river.

**Churso**, a village on the Quebec shore, is soon passed, and just below this point the steamer glides between very

beautifully wooded islands. These islands being so profusely wooded with very tall elm and basswood trees of luxuriant growth of branches, give to them, when the trees are in full leaf, at a slight distance, the extraordinary forms and outlines of animals or of such things as



A few of the Thurso Islands.

our imagination may portray. The Thurso islands are favorite resorts for picnics, camps and hunting parties.

The steamer stops at the small village of Wendover for a moment, and then speeds along to Treadwell, five miles below.

The North Nation River is the next large tributary on the Quebec side, and the South Nation on the Ontario or south shore. These two streams have each a course of nearly one hundred miles.



Chateau Montebello.



**Papineauville**, on the North Nation, is a thriving little town, with lumber and grist mills, and water power in abundance.

**Montebello** is five miles from Papineauville, where the seigneur of Petite-Nation, the late Hon. Louis Joseph Papineau, resided. His name fills many pages of Canadian history. After his pardon and return from banishment he mingled very little in politics, but lived to see many of the dreams of his turbulent youth and manhood realized by other hands. The Château Montebello is one of the very few old French seignorial establishments existing at the present time—and that only in the Province of Quebec. The château is charmingly situated on



Grand Hotel, Caledonia Springs.

the bold bank of the river, among grand old pine and hemlock trees, monarchs of the primeval forest, which, no doubt, could they speak, would tell a tale of baronial splendor and of the magnificent entertainments which have taken place within the walls of the old château in days gone by. The scenery in this vicinity can hardly be surpassed in any portion of the country, blending the boldness of hills with the placid beauty of quiet waters and well-tilled plains.

Eighteen miles from Papineauville the boat stops at L'Original, the county town of the united counties of Prescott and Russell. Here travellers for

**Caledonia Springs** disembark. The springs have a great efficacy in rheumatic and gouty diseases. There is

a good hotel there. The springs are four in number—saline, sulphur, gas, and intermittent.

It was about 1840 or 1841 that the first hotel of any importance was erected at the Springs. The first owner of the hotel was Mr. William Parker, an American, of great energy and push, who succeeded in making the Caledonia Springs celebrated, not only for the curative properties of its waters, but also as a fashionable resort for the *élite* of Montreal and the towns of northern New York State. Horse-racing, which attracted noted sporting men both from the United States and Canada, was indulged in with much *éclat*. This was the age before there were railways to take the citizens of Montreal and



A Glimpse from the Carillon and Grenville Train.

other towns to the seaside summer resorts, and, as the Springs were within easy access by steamboat or by driving in carriages, it can readily be understood how the place became, at that time, a fashionable resort.

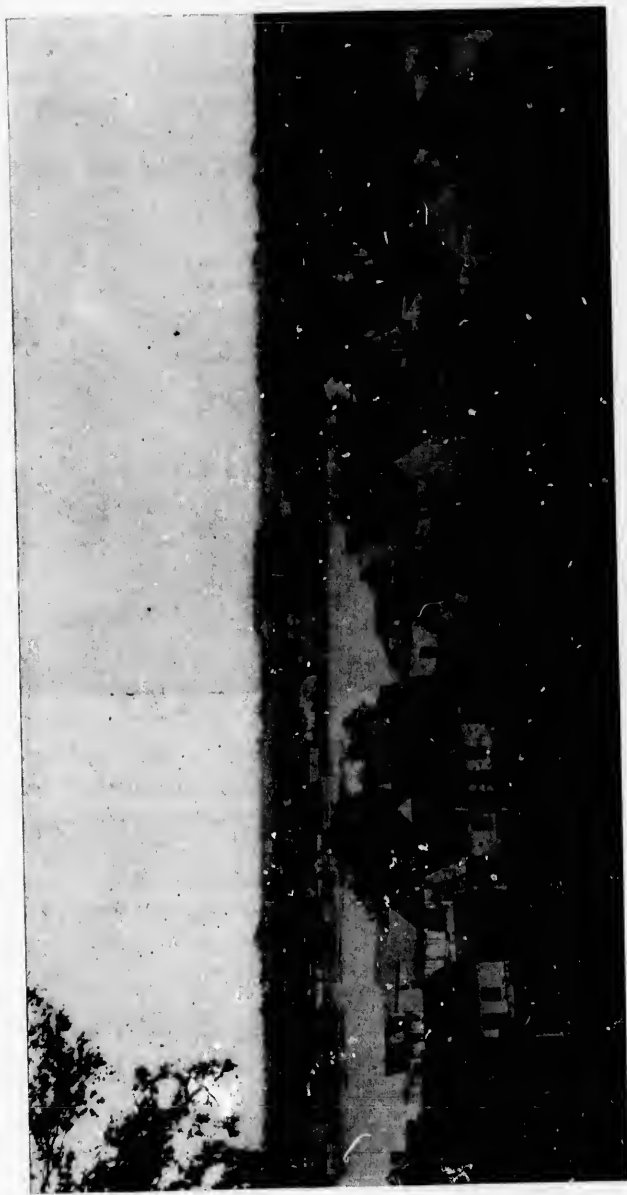
Mr. Parker established a printing house, and a weekly paper was issued at the Springs; and, as there was no lack of literary talent among the visitors, it became an interesting feature of the place. The original Canada House was destroyed by fire after it had been standing for twenty-five years, and a new hotel, also the Canada House, but built of stone, was erected about 1868, and was a very fine, substantial building. The present hotel, the "Grand," erected on the site of the old, is a fine building, capable of accommodating a large number of guests.

number—

of any  
owner  
can, of  
ing the  
narrative  
e resort  
rn New  
l sport-  
la, was  
before  
eal and

, as the  
t or by  
ood how  
ort.

weekly  
was no  
came an  
Canada  
standing  
Canada  
368, and  
nt hotel,  
is a fine  
mber of



A Snap Shot of Point Fortune and Carillon villages, on the Ottawa.

**Grenville** is a few miles lower down on the north shore. The river here passes close to the Laurentian Mountains, and, narrowed also by islands, flows swiftly down the Long Sault Rapids, or "Chute-à-Blondeau," in a foaming and impetuous torrent, which stops all navigation except that of downward-bound lumber rafts.



The Old "Carillon."  
Carillon and Grenville Railway Locomotive.

The sportsman will find Grenville the most convenient point of departure for the wild and romantic lake country of the Laurentian hills. This tract resembles the Adirondack region of New York in its geological formation, as well as in its abundant lakes and streams. The whole country is dotted over with lakes, and, with short "portages" from stream to stream, the sportsman can go great distances in a canoe.

On the islands and south shore is the village of Hawkesbury; and the mills built upon the islands are some of the largest upon the Ottawa River.

The Grenville Canal was built to overcome the rapids of the Long Sault. The old canal was designed and commenced by the Royal Engineers, for the Imperial Government, in 1829, but this canal was greatly enlarged by the Dominion Government a few years ago; the work,

however, has never been completed sufficiently to allow the free passage of large river steamers with any degree of regularity; therefore passengers from the steamer "Empress" are transported to Carillon in twenty minutes by the

**Carillon & Grenville Railway.** This railway, operated exclusively in connection with the passenger steamers of the Ottawa River Navigation Company, is to-day, perhaps, the only broad gauge road in the Dominion (*i. e.*, a gauge of 5 feet 6 inches), and is, therefore, unique and interesting.

Upon the Quebec side, opposite the half-way station on the Carillon & Grenville Railway, is the Thermopylæ of Canada, where a deed of "derring-do" was performed than which no greater is recorded in history. In 1660 the colony was on the eve of destruction. The full force of the Iroquois tribes was in arms to sweep the French into the St. Lawrence. Dollard des Ormeaux and sixteen young Montrealers resolved upon a deed which should teach the Indians a lesson. They bound themselves by an oath neither to give nor take quarter. They made their wills, and took the sacrament in the little church at Montreal. They then started up Lake St. Louis and the Ottawa to this point, where they built a palisaded fort. Some Indians had joined them, but during the fight which ensued only three or four Algonquins remained faithful. Soon the Iroquois canoes came dancing down the rapids.



The Big Dam at Carillon, on the Ottawa.

A war party of three hundred warriors had been up the river. They speedily discovered the fort and rushed to attack it. Day after day they met with a bloody repulse. Sullen with rage, they sent for reinforcements, until more than eight hundred warriors surrounded the palisades.

The story of the "Heroes of the Long Sault" has been admirably told by Mr. George Murray, B.A., F.R.S.C., in his celebrated poem, "How Canada was Saved."

Daulac, the captain of the fort, in manhood's fiery prime,  
Hath sworn by some immortal deed to make his name sublime ;  
And sixteen soldiers of the Cross, his comrades true and tried,  
Have pledged their faith for life and death, all kneeling side by side.  
And this their oath, on flood or field, to challenge face to face  
The ruthless hordes of Iroquois—the scourges of their race—  
No quarter to accept or grant, and, loyal to the grave,  
To die, like martyrs, for the land they had shed their blood to save.

Soft was the breath of balmy Spring in that fair month of May.  
The wild flower bloomed—the Spring bird sang on many a budding spray—

When, loud and high, a thrilling cry dispelled the magic charm,  
And scouts came hurrying from the woods to bid their comrades arm,  
And bark canoes skimmed lightly down the torrent of the Sault,  
Manned by three hundred dusky forms—the long expected foe.

Eight days of varied horrors passed ; what boots it now to tell  
How the pale tenants of the fort heroically fell ?  
Hunger and thirst, and sleeplessness, Death's ghastly aids, at length  
Marred and defaced their comely forms, and quelled their giant strength.

The ends draws nigh—they yearn to die—one glorious rally more  
For the sake of Ville-Marie, and all will soon be o'er ;  
Sure of the martyr's golden crown, they shrink not from the cross,  
Life yielded for the land they love, they scorn to reckon loss.

The fort is fired, and through the flame, with slippery, splashing tread,  
The Redmen stumble to the camp, o'er ramparts of the dead ;  
There, with set teeth and nostrils wide, Daulac, the dauntless, stood,  
And dealt his foes remorseless blows, 'mid blinding smoke and blood.  
'Till, hacked and hewn, he reel'd to earth, with proud, unconquered glance,  
Dead—but immortalized by death—Leonidas of France !  
True to their oath, his comrade knights no quarter basely craved—  
So died the peerless twenty-two—so Canada was saved.

Soon we approach Carillon, and from the train have a full view of the great Carillon Dam. This dam, built across the river to increase the depth of water in the Carillon Canal, is one of the greatest triumphs of engineering skill in the Dominion. It was constructed by the Dominion Government at a total cost of \$1,350,000 ; it is two thousand four hundred feet long and twelve feet high, and was completed in 1881.

**Carillon** (chime of bells) has become a favorite resort, in summer, for visitors both from Ottawa and Montreal.



Approaching a Landing—Lake of Two Mountains.

There are two hotels (the Queen's and Kelly's), and the first-class boarding-house "Bellevue," which, under Madame Gaherty's able management, is one of the best summer boarding-houses on the river. The view of the river and rapids of Carillon, the magnificent stretch of country to the south, from Bellevue House, on the top of Carillon Hill, is grand in the extreme; and the park-like



The Devil's Den—Rigaud Mountain.

pine groves in rear of the house, which are always accessible to the guests, make the situation of Bellevue delightfully agreeable. Bellevue has a history; it was built by the late Commissary-General Chas. John Forbes about 1827. The old residence in its day has been the scene of many festivities, many people of distinction constantly coming there to stay—Sir John Colborne, the Earl of Dalhousie, Sir John Kempt, Sir Charles Bagot, Sir Charles Metcalfe, and Lord Sydenham, all governors of Canada, besides numerous military and civil grandees, have been entertained there in days gone by. Carillon is a favorite place for excursionists, who, leaving the city of Montreal by steamer "Sovereign" for a day's outing—arriving about noon and leaving for the return trip about half-past one—spend the time in driving to the picturesque village of St. Andrews; a visit to the great dam; or strolling through the pine groves of Bellevue; and on the return they are quite ready for the excellent dinner which is served on board the steamer "Sovereign" immediately after the vessel starts from Carillon.

Soon after leaving Carillon the steamer passes the mouth of one of the great tributaries of the Ottawa—the North River (Rivière-du-Nord). And now a beautiful scene meets our view as we approach the landing for Rigaud. The large, thickly-wooded island immediately in front of our course is called Carillon Island (Jones'), and beyond it we see the first glimpse of the Lake of Two Mountains, with Mounts Brûlé and Calvaire in the distance, and Rigaud Mountain on our right hand. The whole is a panorama of scenic beauty which cannot be surpassed.

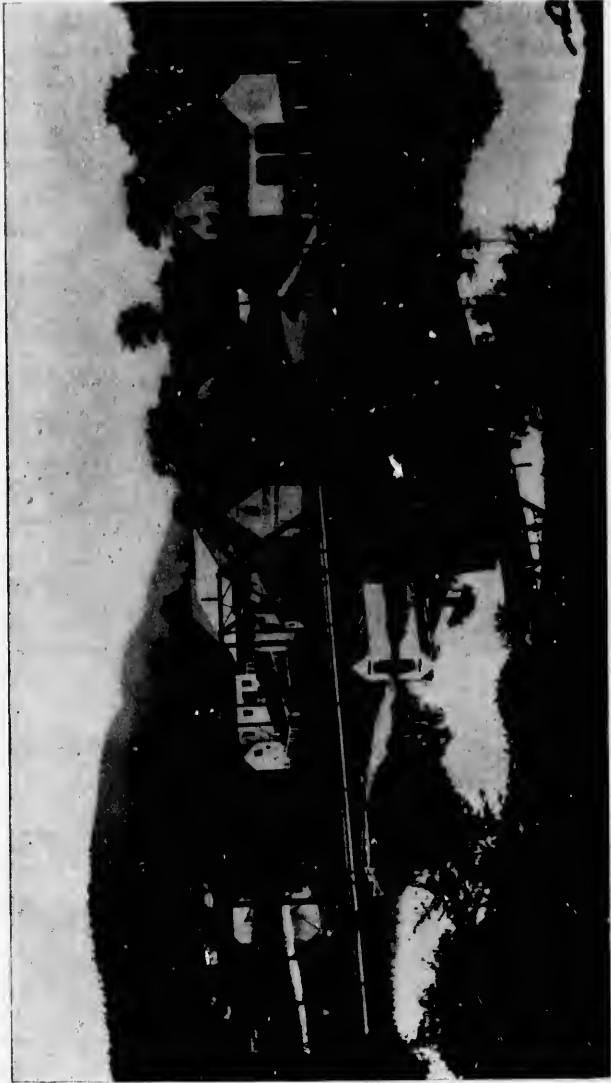
**Rigaud Mountain** stands out a bold and square mountain, surmounted by a cross, and belonging to the same family of igneous mountains with those which start up from the prairie land round Montreal. Upon the summit of this mountain is a very singular plateau, covered to a great depth with rounded boulder-stones each about the size of a man's head. These stones consist mainly of different rock from the mass of the mountain, and they lie in long ridges as if turned up with a plough. The natives here styled this place very appropriately the "Devil's Garden." The Geological Report of 1863 classified it under the heading of "Moraines."



s acces-  
delight-  
uilt by  
s about  
scene of  
stantly  
Earl of  
Charles  
Canada,  
ve been  
favorite  
Montreal  
arriving  
half-past  
e village  
strolling  
e return  
which is  
mediately

asses the  
wa—the  
beautiful  
ding for  
mediately  
(Jones'),  
Lake of  
re in the  
nd. The  
cannot be

re moun-  
the same  
start up  
e summit  
vered to a  
about the  
mainly of  
and they  
gh. The  
ately the  
of 1863



Rigaud Village, on a Tributary of the Ottawa River.

At the foot of the mountain is the pretty town of Rigand, on the Rivière-à-la-Graisse, thriving and clean and bright, with its tin roofs. There is a large French college here. The town is one mile from the steam-boat landing.

Steaming down the lake, the boat passes St. Placide, and makes a short stop at Pointe-aux-Anglais (English-



Residence of the President of the Ottawa River Navigation Co., Como.

man's Point). History fails to tell us who this Englishman was, and, seemingly, none of his descendants can be found at this sequestered spot at the present time. We cross the lake to the south shore, passing the fine summer residences of many Montrealers on Hudson Heights, and soon arrive at

**Hudson**, which is a picturesque spot, and much frequented as a summer resort.

Just below Hudson the lake narrows to a half mile in width, and as soon as the steamer rounds the long wooded point on our right, we come in sight of

**Como.** This is a beautiful and charming summer resort, perhaps the most picturesque of all the many delightful spots on the Lake of Two Mountains, where there are several fine substantial summer residences.

own of  
d clean  
French  
steam-

Placide,  
English-



English-  
s can be  
ne. We  
summer  
hts, and  
d much  
half mile  
the long  
summer  
ne many  
s, where  
sidences.

Como is renowned for its grand shade trees of oak and elm, which completely overshadow the highroad. There is a first-class boarding-house here, "Willow Place" (Madame Brasseur's), which is celebrated for its excellent table and comfortable accommodation, and is patronized by Americans as well as Canadians.

H. R. H. the Duke of Connaught, while on a duck-hunting expedition, late in the fall of 1869, when an officer of the Rifle Brigade, stayed at Riversmead, Como, the guest of the late R. W. Shepherd (President of the Ottawa River Navigation Company); and it was then that His Royal Highness enjoyed his first sleigh drive in Canada, going from Como to Vaudreuil, on the Grand Trunk line, seven miles distant.

There are some fine apple orchards at Como, where the choicest Canadian apples are cultivated for the English market.

**Oka.** Leaving Como, the steamer crosses the lake to Oka, the mission of the "Lac-des-Deux Montagnes." This is an Indian village of the Iroquois and Algonquin tribes. The mission was established in 1721, the Indians having been transferred from Sault-au-Récollet, north of the city of Montreal, where they had been previously stationed.



One of the "Royal Oaks," Como.

The mountain behind the village is called "Calvaire." Four chapels are built at intervals on the road to the top of the mountain, and on its summit three other chapels are visible from the deck of the steamer. These chapels (the stations of the Cross) were built by Rev. Father



The Oka Church and Seminary.

François Picquet, who came from France to Canada in 1733, and was in charge of the mission of the Lake of Two Mountains. The chapels were built about 1740; and in each of the seven there is an extraordinary carving of wood, representing the mysteries of the Passion of our Lord. It is recorded that these wonderful carvings were made by a Canadian, who, in the words of a well-known priest, "had more good-will than capacity"—but it is uncertain when the carvings were placed in the chapels, probably about the middle of the last century.

Old oil paintings, which were first placed in the largest chapel on the summit of Calvaire by Father Picquet, works of art and copies of the great European masters, were removed, many years ago, to the church at Oka, to save them from destruction, where they may be seen to-day.

Every year, on the 14th of September, a pilgrimage takes place to the summit of Calvaire. The "Fête du Calvaire" pilgrimage is religiously attended by all French Canadians within a radius of thirty miles from Oka. Many steamers are employed in carrying the pilgrims to

vaire."  
the top  
chapels  
chapels  
Father



nada in  
Lake of  
at 1740;  
carving  
n of our  
ags were  
l-known  
out it is  
chapels,

in the  
Father  
European  
e church  
they may

grimage  
Fête du  
l French  
on Oka.  
grims to

this fête, and the wonderful order and decorum observed by the thousands of visitors on that day is really a matter of astonishment to those who have seen large crowds assembled in other places.

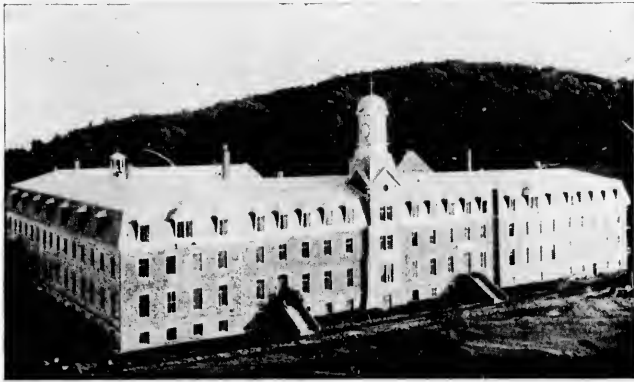
**Les Trappistes.** The smaller elevation to the east of Mont Calvaire is the site of the first Trappist monastery—this building is now used as an agricultural college—but in the valley beyond the hill, hidden from view, is the new monastery of La Trappe, which was built in 1892. This is a fine substantial stone building, and has ample accommodation for a large number of visitors. The Trappists are agriculturists, and a visit to their large farm, orchards and vineyards is the most convincing proof that they are successful and scientific farmers. The fine thoroughbred stock of cattle, horses, sheep and swine of many breeds delight the eye of the stock-raiser. The Trappists' cheese, Port-du-Salut, has a world-wide reputation, and sells as high as imported Swiss cheese; and as fabricators of wine and cider they keep up their old world reputation.

The rules of the order of La Trappe monks are very strict, and only male visitors are admitted into the monastery—ladies are politely stopped at the threshold; no conversation between the members of the order is permitted, except by special permission of the abbot, and then as few words as possible must be used. The monks are compelled to rise at 2 a.m. for prayer and



The Road on Pine Bluff, Oka.

meditation. One meal a day only, as a general rule, is permitted, and there is entire abstinence from meat, fish, eggs or butter, a spare quantity of bread, vegetables and milk only being allowed. It is most interesting to watch the monks in the field performing their silent labor, in the garb of their order, and the sombre brown costume of the novice brother forming a striking contrast to the bright dress of the brother in full orders. How strange all this active life going on without a sound being uttered; to see them fall suddenly on their knees while the father, whose duty it is, performs "the office." Everything is done by rule, and whatever the occupation it must be suspended when the bell sounds for the religious exercises.



The Trappist Monastery, Oka.

A day or two may be spent most pleasantly at the monastery, where the comforts of man are well attended to by the polite and gentlemanly monks of La Trappe.

Stages are always in readiness at the steamboat wharf at Oka to meet the steamer every day to convey visitors to the monastery for a trifling fare. Parties may leave Montreal in the morning, reach Oka at 10.30 o'clock, and return same day by the same steamer, "Sovereign," at 3.25 p.m., thus having ample time to spend at the monastery and as well to drive to the top of Mount Calvaire, visiting *en route* the seven stations of the cross, and enjoy the most magnificent panorama of the lake and surrounding country from the summit.

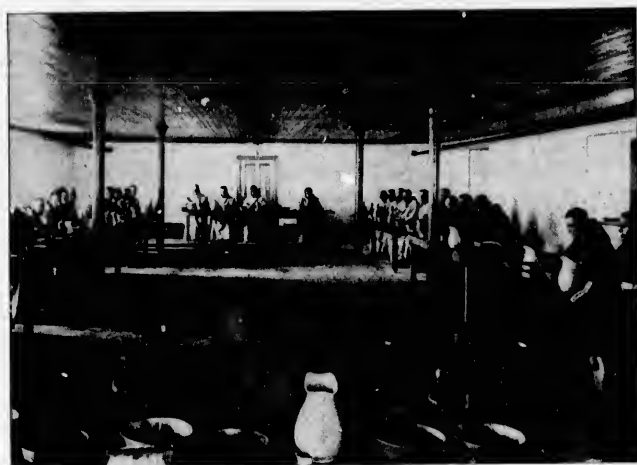
**The Lake of Two Mountains** now widens out, below Oka, to its greatest width, about fifteen miles, and far

rule, is  
at, fish,  
bles and  
o watch  
labor, in  
costume  
to the  
strange  
attered;  
father,  
thing is  
be sus-  
rcises.



at the  
attended  
appe.  
at wharf  
visitors  
y leave  
ock, and  
gn," at  
te mon-  
alvaire,  
d enjoy  
rround-

, below  
and far



The Trappists at Dinner.

on the right we see the tinned spire of the parish church of Vaudreuil gleaming in the level rays of the declining sun. On the left extend the two northern branches of the *embouchure* of the river, which, after passing in the rear of the Island of Montreal and enclosing the Ile Jésus, unite with the St. Lawrence below.

Immediately ahead is seen the point of the Island of Montreal (Bout-de-l'Isle). This is, perhaps, the most interesting and historical portion of the river.



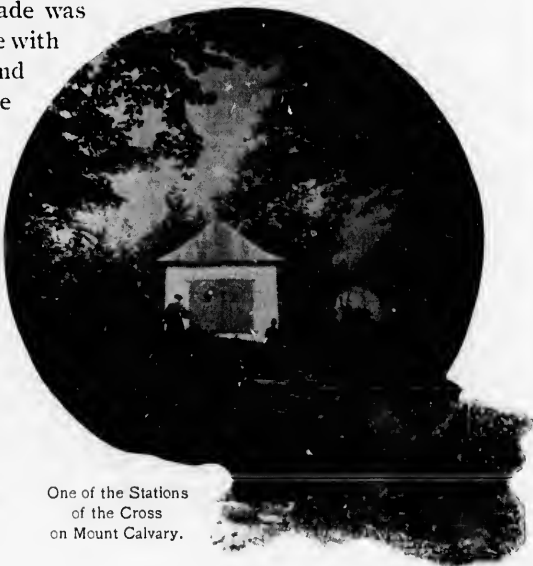
The Trappists in Meditation.

Boisbriant, the residence of the late Sir J. J. C. Abbott, recently purchased by Mr. L. C. Clouston, general manager Bank of Montreal, stands out prominently, and around the end of the island, towards the east, the palatial summer residences of R. B. Angus, Esq., Hon. L. J. Forget and others of prominent citizens of the metropolis of Canada are visible through the trees.

When the whole Bout-de-l'Isle was thick forest, the domain of Boisbriant—a fief noble—was granted by the King of France, in 1672, to Sidrac du Gué, sieur de Boisbriant, and the first house was erected in that year. Du Gué sold this fief, in 1679, to Charles Le Moyne de Longueuil and Jacques Le Ber, merchant princes and fur traders. The tower on the top of the hill is the ruin of an old windmill erected by Le Ber in 1688. This mill was loopholed for musketry as a protection against the Indians. The Iroquois succeeded in burning this mill in 1691, after a very gallant defence made by Le Ber and his people.

**Fort Senneville**, the ruins of which are situated on the shore of the lake, immediately below the fortified windmill, may easily be discerned from the deck of the steamer. This fort was built by Le Ber's son, it is supposed, about 1693. The fort consisted of a manor house, courtyard, and four towers or bastions, which commanded all approaches either from the land or the water.

A large trade was carried on here with the Indians, and several hostile attacks were made on the fort at different times by the Iroquois and Mohawks. But the fort was finally burnt by a detachment of American troops, during the American



One of the Stations  
of the Cross  
on Mount Calvary.



War of Independence, in the summer of 1776, under General Arnold, on their march to Montreal. The ruins of the old fort have, for some years, been carefully preserved, and, being now covered with vines and creepers, form an interesting feature in the land-



Near Vaudreuil, on the Lake of Two Mountains.

scape. Truly, if we do overcome Nature, she has her revenge, for when the ugliness of our handiwork falls into ruin, she works them up into picturesqueness, and, festooning them with verdure, smothers their hard and ungraceful outlines. Tourists should not omit to visit this old relic, which recalls the heroic times of our country's history. We pass quite close to Dr. Girdwood's island, disclosing the extensive green-houses and forcing-houses on it, and shortly afterwards we arrive at St. Anne-de-Bellevue. The steamer goes through a lock there, thence under the two iron bridges of the Grand Trunk and the Canadian Pacific lines between Montreal and Toronto. These fine structures demonstrate two different styles of iron bridges, viz., the former that of seven and thirty years ago, and the latter that of the present cantilever style of bridge; and it is remarkable that these two samples of great engineering skill should be placed within fifty-five feet of each other.

**St. Ann-de-Bellevue** is a thriving village, and was formerly the point of landing of the old French *roya-gours*, who, in canoes, traversed the waters of the Upper

Ottawa to secure in northern forests the furs which were at one time the staple product of Canada.

The little stone building near the locks (used since 1860 as a village school) was the first stone church of St. Anne's, and also the last church on the route in which the old *voyageurs* stopped to pray to their titular "Sainte-Anne," putting themselves under her protection when they set out on their perilous voyages to the great North-West. The voyage was really only supposed to have begun in earnest when St. Anne was left behind. This little old church was built in 1703. It was at St. Anne that Tom Moore, while passing down the Ottawa in canoes, saw something of the fur-trading life, and was



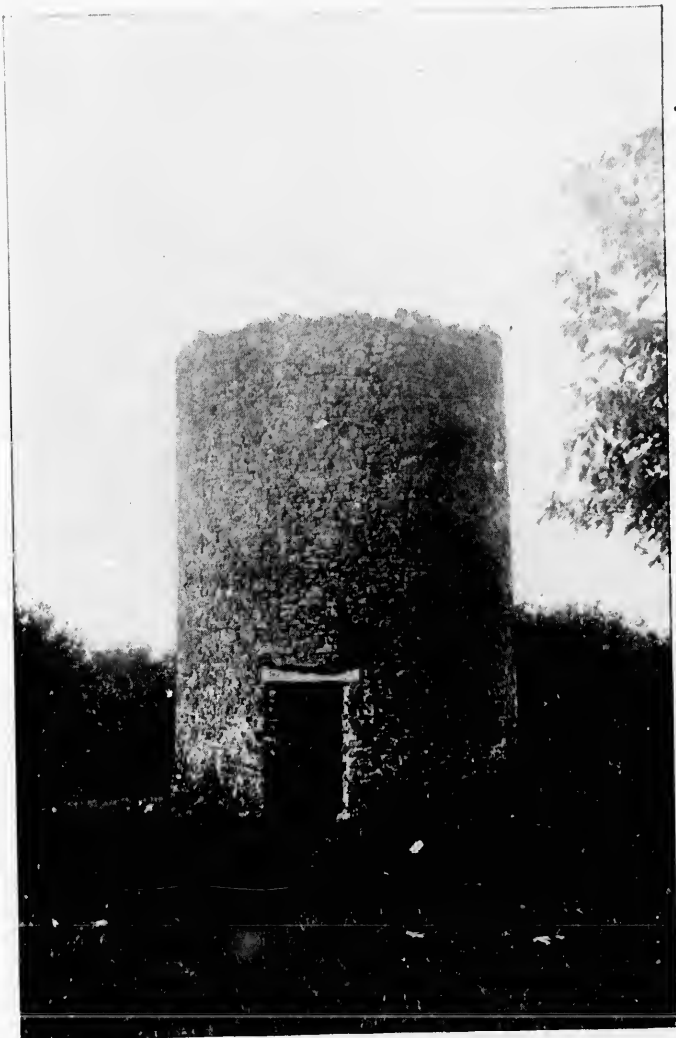
Fort Senneville, near Boisbriant.

inspired to write his musical "Canadian Boat Song," which has made the locality famous.

Leaving St. Anne, the steamer crosses over to the south shore and skirts along for some distance the northern shore of Ile Perrot. This island takes its name from Monsieur Perrot, a great fur-trader, who established a trading-post on the island in 1670.

The steamer passes quite near to Sherringham Park, a delightful picnic ground on Ile Perrot, and the resort of pleasure-seekers (brought there by steamer specially chartered for the occasion), who find here all the necessary conveniences, combined with fresh air, fine shade trees, excellent boating and fishing, for a day's outing. Some fine summer residences of Montrealers are seen

very distinctly, on the Island of Montreal, from the deck of the steamer as we pass. Bay View, Beaufort, and the village of Pointe-Claire, with the quaint old-fashioned windmill and handsome church, stand out prominently. The first church at Pointe-Claire (built on the site of the present substantial edifice) was erected in 1713.



Le Ber's Mill, St. Anne-de-Bellevue, West End Montreal Island.

The stone windmill on Pointe-du-Moulin was erected in 1700—thirteen years before the first church, and it, too, was intended, like that at Bout-de-l'Isle, for protection against the Indians, being loopholed for musketry.

We pass the summer resorts of Lakeside, Valois, and, on the point below Valois, the splendid club-house of the Forest and Stream Club can be distinctly seen from the steamer as she glides swiftly along.

We are now well into the Lake of St. Louis, which is the confluence of the Ottawa and St. Lawrence rivers. The waters of these two rivers do not seem to mix at all, but run side by side the whole length of the lake, and showing clearly and distinctly their respective colors until



Tom Moore's House, St. Anne.

they are rudely tossed about in the great rapids below Lachine. Just above Lachine we pass the beautifully wooded Island of Dorval, formerly the residence of Sir George Simpson, governor of the Honorable Hudson's Bay Company. It was at his fine residence on Dorval Island that Sir George entertained H. R. H. the Prince of Wales on his memorable visit to Canada in 1860.

**Lachine** is famous for its historical incidents. The origin of the name *La-Chine* is said to have been given derisively to the place in consequence of the failure of de La Salle's search of the route to China and Japan in the year 1669.

The great massacre of Lachine occurred on the 5th of August, 1689, when fifteen hundred Iroquois traversed Lake St. Louis and silently landed at Lachine that dark

ected  
and it,  
rotec-  
etry.  
s, and,  
of the  
om the

hich is  
rivers.  
at all,  
e, and  
s until

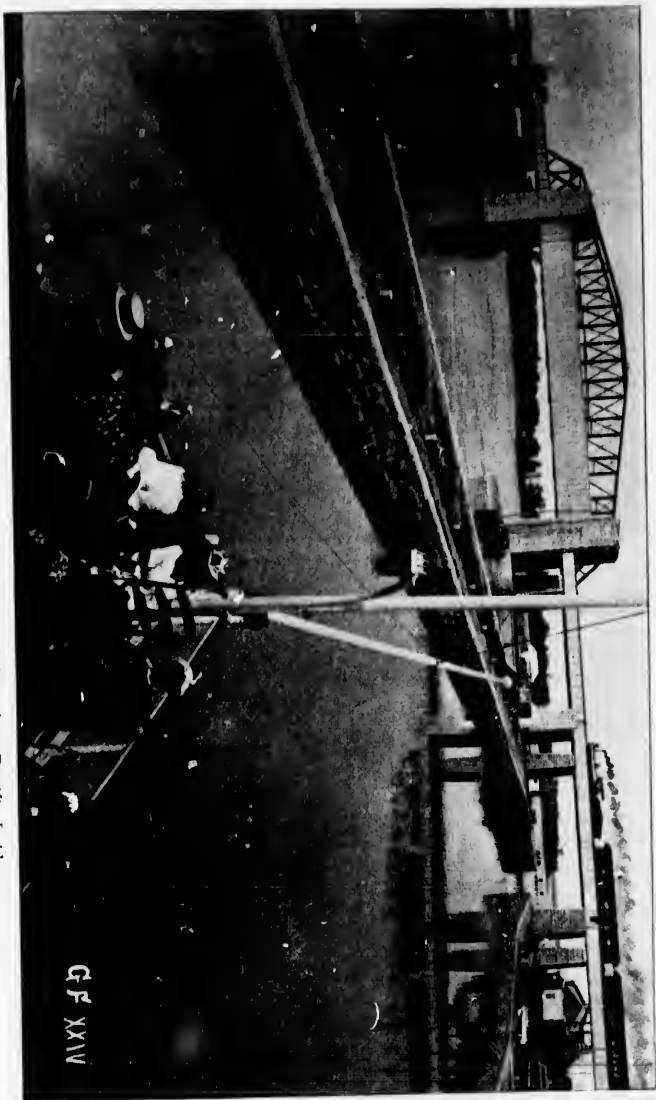


below  
ntifully  
of Sir  
dson's  
Dorval  
Prince  
o.

The  
given  
ure of  
pan in

5th of  
versed  
at dark

Entrance to St. Anne's Locks. Grand Trunk and Canadian Pacific Locks.



stormy night, massacring over two hundred men, women and children with great barbarity, and carrying off over one hundred and twenty prisoners, who, it is said, were cruelly burnt and sacrificed to satisfy the vengeance of the redman.

It was at Lachine that the British General Amherst landed September 6th, 1760, with ten thousand troops,



Among the Islands, St. Anne-de-Bellevue.

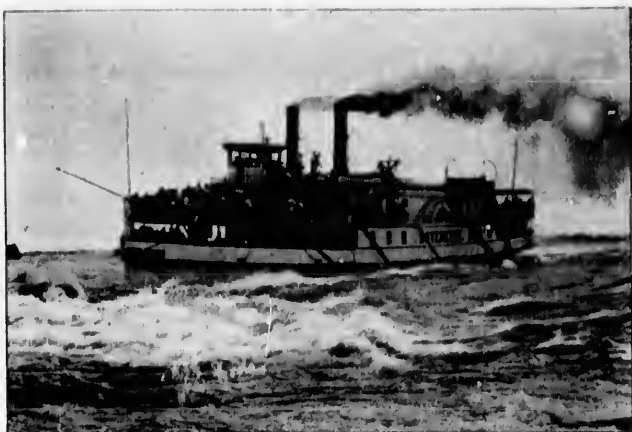
after having "shot" all the rapids of the St. Lawrence; and marched on to Montreal the same day, camping before the city, which capitulated on the following day.

Lachine is now almost a suburb of the city of Montreal, and is quite a manufacturing centre. There is direct connection by rail with the city every hour, and electric trolley cars run every half hour during the day and night.

At Lachine the passenger list is always increased by a number of persons who have come out from Montreal to take a trip down the Rapids, which lie between Lachine and the city; and the running of these rapids forms a thrilling termination to the very charming trip.

A short distance from Lachine the steamer passes under the great cantilever bridge of the Canadian Pacific Railway, lately completed, and which forms a new feature of engineering skill. The

**Lachine Rapids** are the most perilous in the whole devious channel of the St. Lawrence, for the dangerous rocks which lie just below the surface would deceive any but a skilful navigator. The swarthy pilot who takes



Entering the Lachine Rapids.

the wheel at this point pays little attention to anything but the duty in hand, which certainly demands all his energies. Casting alternate glances at him and the rushing waters ahead of us, we involuntarily breathe words of the hymn—

“Steady, O Pilot, stand firm at the wheel.”

Right in our path lies a ragged rock which threatens us with instant destruction ; but a turn of the wheel at just the right moment sends our good craft a little to the left



Old Windmill, near Montreal.



John M. Garland Son & Co.'s Store.  
Ottawa.

of it, and the apparent danger is past. With bated breath we watch for the next peril that looms ahead of us, to find it, like its predecessor, vanquished by the strong arm and steady nerve of the man to whom every inch of the channel is as familiar as a beaten path.

**Montreal.** Entering once more into quiet waters, we steam on our way to Montreal. The first sight that meets our view is the new great Victoria Jubilee Bridge of the Grand Trunk Railway, one of the greatest wonders of the age among modern cantilever bridges. The bridge is nearly two miles long and rests on twenty-four piers. It will be completed in the summer of 1899. After passing under the bridge, through the centre span, the city of Montreal comes into sight. A view of the commercial metropolis is presented which is unequalled from any other point, not excepting the magnificent scene from the summit of the Mountain Park.



O

MIL  
7  
20  
21  
22  
23  
24  
25  
26  
27  
28  
29  
30  
31  
32  
33  
34  
35  
36  
37  
38  
39  
40  
41  
42  
43  
44  
45  
46  
47  
48  
49  
50  
51  
52  
53  
54  
55  
56  
57  
58  
59  
60  
61  
62  
63  
64  
65  
66  
67  
68  
69  
70  
71  
72  
73  
74  
75  
76  
77  
78  
79  
80  
81  
82  
83  
84  
85  
86  
87  
88  
89  
90  
91  
92  
93  
94  
95  
96  
97  
98  
99  
100  
101  
102  
103  
104  
105  
106  
107  
108  
109  
110  
111  
112  
113  
114  
115  
116  
117  
118  
119  
120  
121  
122  
123  
124  
125  
126  
127  
128  
129  
130  
131  
132  
133  
134  
135  
136  
137  
138  
139  
140  
141  
142  
143  
144  
145  
146  
147  
148  
149  
150  
151  
152  
153  
154  
155  
156  
157  
158  
159  
160  
161  
162  
163  
164  
165  
166  
167  
168  
169  
170  
171  
172  
173  
174  
175  
176  
177  
178  
179  
180  
181  
182  
183  
184  
185  
186  
187  
188  
189  
190  
191  
192  
193  
194  
195  
196  
197  
198  
199  
200

\* Ste

MIL

2  
3  
4  
5  
6  
7  
8  
9  
10  
11  
12  
13  
14  
15  
16  
17  
18  
19  
20  
21  
22  
23  
24  
25  
26  
27  
28  
29  
30  
31  
32  
33  
34  
35  
36  
37  
38  
39  
40  
41  
42  
43  
44  
45  
46  
47  
48  
49  
50  
51  
52  
53  
54  
55  
56  
57  
58  
59  
60  
61  
62  
63  
64  
65  
66  
67  
68  
69  
70  
71  
72  
73  
74  
75  
76  
77  
78  
79  
80  
81  
82  
83  
84  
85  
86  
87  
88  
89  
90  
91  
92  
93  
94  
95  
96  
97  
98  
99  
100  
101  
102  
103  
104  
105  
106  
107  
108  
109  
110  
111  
112  
113  
114  
115  
116  
117  
118  
119  
120  
121  
122  
123  
124  
125  
126  
127  
128  
129  
130  
131  
132  
133  
134  
135  
136  
137  
138  
139  
140  
141  
142  
143  
144  
145  
146  
147  
148  
149  
150  
151  
152  
153  
154  
155  
156  
157  
158  
159  
160  
161  
162  
163  
164  
165  
166  
167  
168  
169  
170  
171  
172  
173  
174  
175  
176  
177  
178  
179  
180  
181  
182  
183  
184  
185  
186  
187  
188  
189  
190  
191  
192  
193  
194  
195  
196  
197  
198  
199  
200

\* Pa

GRA

STR  
CA  
CA

RIC



## Ottawa River Navigation Co.

### OTTAWA TO MONTREAL TIME-TABLE.

Miles	OTTAWA	Leave	8 30 A. M.	STEAMER.
8	East Templeton	about	8 00 Brkfast.	
20	Cumberland	"	8 45	
21	Buckingham, Prince's Wharf*	"	8 50	
25	Rockland	"	9 05	
29	Thurso	"	9 25	
33	Wendover	"	9 55	
39	Brown's Wharf	"	10 25	
41	Papineauville	"	10 40	
46	Montebello	"	11 05	
59	L'Original (for Caledonia Springs)	"	12 05 NOON.	
64	Grenville	Arrive	12 50 P. M.	
64	Grenville	Leave	1 05	C. & G.
77	Carillon	Arrive	1 30	R. R.
77	Carillon	Leave	1 35 Dinner.	STEAMER.
82	Rigaud	"	2 40	
88	Pointe aux Anglais (Flag)	"	2 30	
92	Hudson	"	3 05	
93	Como	"	3 15	
94	Oka	"	3 25	
103	St. Anne's	"	4 05	
121	Lachine	Arrive	5 20	
121	Lachine	Leave	5 30	
130	MONTREAL via Rapids	Arrive	6 30	

\* Steamer will leave Carillon immediately after train arrives from Grenville. Excursionists should be on board steamer by 1.30 p m.

### MONTREAL TO OTTAWA TIME-TABLE.

Miles	MONTREAL	Leave	8 00 A. M.	G. T. R.	
	Lachine	Arrive	8 20		
9	Lachine, Steamer leaves		8 22 Brkfast.	STEAMER.	
27	St. Anne's	about	9 40		
56	Oka	"	10 30		
37	Como	"	10 40		
38	Hudson	"	10 50		
42	Pointe aux Anglais (Flag)	"	11 10		
48	Rigaud	"	11 45		
53	Carillon	Arrive	12 20 NOON.		
53	Carillon	Leave	12 25 P. M.		C. & G.
66	Grenville	Arrive	12 55		R. R.
66	Grenville	Leave	1 05	STEAMER.	
71	L'Original (for Caledonia Springs)*	"	1 30 Dinner.		
84	Montebello	"	2 45		
89	Papineauville	"	3 00		
90	Brown's Wharf	"	3 15		
95	Wendover	"	3 35		
101	Thurso	"	4 00		
105	Rockland	"	4 30		
100	Buckingham, Prince's Wharf	"	4 55		
110	Cumberland	"	5 00		
122	East Templeton	"	5 55		
130	OTTAWA	Arrive	6 35		

\* Passengers for Caledonia Springs may dine on Steamer after leaving Grenville.

**COMFORTABLE MEALS SERVED ON BOARD STEAMERS.  
BAGGAGE CHECKED.**

#### CONNECTIONS WITH

GRAND TRUNK RAILWAY at Lachine, or trips "Up the River," or at Lachine or St. Anne's for "Down the Rapids." All Passengers from Montreal taking Grand Trunk train for Lachine to connect with Steamer for Ottawa and intermediate ports.

STR. "JAMES SWIFT" at Ottawa, for Rideau River and Lakes to Kingston.

CANADA ATLANTIC RAILWAY at Ottawa, for Parry Sound.

CANADIAN PACIFIC RAILWAY, connecting with this Line at St. Anne's, Hudson and Ottawa or Montreal *via Rapids*, or at Ottawa for points West of Ottawa.

RICHELIEU & ONTARIO NAVIGATION COMPANY'S Steamer at Montreal, for Quebec and Intercolonial Railway—Steamers of this Line going alongside to transfer passengers.

# Montreal to Ottawa.

"Up the Ottawa."

The steamer "Sovereign" leaves Lachine wharf for Ottawa and intermediate ports daily (Sundays excepted), on arrival of train leaving Montreal at 8 a. m. from the Grand Trunk Depot.

**THIS IS THE ONLY DIRECT RIVER ROUTE TO OTTAWA.**

Passengers arrive at Ottawa at 6.30 p. m.

## The Most Beautiful Ten Hours Sail on the Continent.

First-class fare to Ottawa . . . . .	\$2 50
Return " " . . . . .	4.00
Round trip (boat and return rail, or <i>vice versa</i> ) .	5.00
Second-class fare . . . . .	1.75

Excellent meals served on board steamer.  
Baggage checked.

Tickets may be procured in Montreal at the following offices :  
**WINDSOR HOTEL,** GRAND TRUNK STATIONS,  
**BALMORAL HOTEL,** (Bonaventure and St. Henri.)  
**ST. JAMES ST. OFFICES,** { 128 HEAD OFFICE O. R. N. Co.  
                                   { 137 161 to 165 Common St.,  
                                   { 138 Canal Basin.  
                                   { 178

**I. J. GIBB,**  
President.

**R. W. SHEPHERD,**  
Managing Director.

# Ottawa to Montreal.

The splendid new iron steamer "Empress" leaves Queen's Wharf, foot of Sussex Street, Ottawa, daily (except Sunday) at 7.30 a. m.

**Electric Car Service** from all the hotels in Ottawa direct to Queen's Wharf.

The trip between **Ottawa**, the political capital, and **Montreal** the commercial capital of Canada, by the river, is one of

**The Most Charming Excursions in America,** combined with every comfort modern luxury commands.

The steamers pass magnificent scenery the whole way.

## Shooting Lachine Rapids,

and arriving at Montreal at 6-30 p. m.

**Going alongside P. & Ont. Nav. Co. Steamer** for Quebec at Montreal to transfer passengers and baggage.

First-class fare to Montreal . . . . .	\$2.50
Return " " . . . . .	4.00
Second class fare " " . . . . .	1.75
Round trip tickets (boat and return rail, or <i>vice versa</i> )	5.00

Excellent meals (50 cts.) served on board steamer.

TICKET OFFICES, Ottawa : { **ED. KING,** Sparks Street, No. 27.  
                                   { **E. C. ARNOLDI,**  
                                   Cor. Sparks and Metcalf Streets.

COMPANY'S FREIGHT AND INFORMATION OFFICE :  
 QUEEN'S WHARF, OTTAWA.

awa.

For Ottawa and  
arrival of train  
Depot.

OTTAWA.

e Continent.

... \$2 50  
... 4.00  
... 5.00  
... 1.75  
er.

owing offices :  
ATIONS,  
and St. Henri.)  
O. R. N. Co.  
Common St.,  
Canal Basin.

ERD,  
ing Director.

treal.

leaves Queen's  
cept Sunday) at

Ottawa direct to

l, and Montreal  
one of

America,

mands.

hole way.

le,

ner for Quebec at

... \$2.50  
... 4.00  
... 1.75  
ice versa) 5.00  
d steamer.

Street, No. 27.

nd Metcalf Streets.

N OFFICE :

... THE ...

## Str. "Sovereign,"

a late addition to the Company's fleet, is a copy of the most modern American river steamers.

### DELIGHTFUL DAY EXCURSIONS.

Str. "SOVEREIGN"

To CARILLON passing Lake St. Louis, St. Anne's and picturesque Lake of Two Mountains, Indian village of Oka, Mount Calvary, with its seven famous old French chapels, Como, etc., allowing parties about one hour at Carillon before steamer leaves to return. A pleasant park at the landing. Take 8.00 a.m. train for Lachine to connect with steamer—the mileage of this trip being about 110 miles; arriving home *via* Rapids at 6.30 p.m.

Fare for Round Trip from Montreal, - \$1.00  
Children under 12 years, Half Fare.

SATURDAY TO MONDAY, tickets, \$1.50

Tickets for these excursions at the Grand Trunk Railway offices, Windsor or Balmoral hotels, and at the offices 143 and 184 St. James Street, and are optional to return from Lachine by train or down the Rapids by boat.

### AFTERNOON TRIPS (STR. "SOVEREIGN").

Returning down the Rapids in the cool of the evening.

To LACHINE by Grand Trunk Railway, 5.00 p.m. train to connect with steamer to SHOOT THE RAPIDS. Fare for Round Trip, 50 cents (or Electric Cars to Lachine).

To ST. ANNE'S (hallowed by memories of Tom Moore), per Grand Trunk; leave daily (except Sunday) 1.30 p.m., to connect with Str. "SOVEREIGN," which leaves there for Rapids about 4 p.m. Fare for Round Trip, 80 cents.

### SATURDAY AFTERNOON TRIPS.

Returning home by the Rapids.

To LACHINE—5.00 p.m. train from Bonaventure Depot. Round Trip, 50 cents.

To ST. ANNE'S—From Bonaventure Depot at 2.15 p.m., and from Windsor Station 1.30 p.m. Boat leaves St. Anne's at about 4 p.m. Round Trip, 80 cents.

To HUDSON, on LAKE OF TWO MOUNTAINS—Take train at Windsor Station at 1.30 p.m.; arrive Hudson 2.45 p.m. Steamer leaves at 3 p.m. sharp for Montreal, passing through Lake of Two Mountains, Lake St. Louis and Rapids. Round Trip, \$1.00.

. . . THE . . .

**Str. "Empress"**

is a splendid large iron steamer of a beautiful model, and considered one of the fastest river boats in Canada. She is a modern boat, with every convenience. Her dining-room, on the main deck aft, is a nice, light, airy room, capable of seating over seventy persons at one time.

The "Empress" has accommodation for 800 passengers.

**DELIGHTFUL DAY TRIP.**

Take Steamer "Empress" at 7.30 a.m. for Grenville or any of the beautiful stopping places. The most favorite points for picnics are—Besserer's Grove, about eleven miles below Ottawa (there is a fine summer hotel there, the "JUBILEE HOUSE"), Cumberland, Thurso and Montebello. The sail through the islands below Thurso, and the extraordinary beauty and picturesque scenery in the vicinity of Montebello, together with the fine old Manor House and park-like grounds, makes Montebello the most favorite resort for picnic parties. The proprietor of the Manor House is always ready to give visitors an opportunity of viewing the place when possible.

**Day Excursion Fares per Str. "Empress."**

Ottawa to Grenville and Back,	- -	\$1.00
Except Mondays, Wednesdays, and Saturdays.		MEALS EXTRA.
Monday, Wednesday and Saturday Excursions,	- -	50c.
		MEALS EXTRA.

—————  
 ◆◆◆◆◆  
 NEW LOCAL PALACE STEAMER

**"VICTORIA,"****BETWEEN THURSO AND OTTAWA,**

arriving at Ottawa about 9 a.m., leaving Ottawa at 5 p.m., every week day. This steamer has been built specially for the local traffic, and is first-class and modern in every respect.

AVAILABLE FOR EXCURSION CHARTER.

TICKET OFFICES, OTTAWA :

QUEEN'S WHARF : { ED. KING, 27 Sparks Street,  
 E. C. ARNOLDI,  
 91 Sparks Street, corner Metcalf.

N.B.—The principal hotels at Ottawa are :

**Russell House, Grand Union, Windsor, the Gilmour House,  
 The Brunswick and Hotel Cecil.**

# STEAMERS

SUITABLE FOR

## Excursions or Pic-Nics

may be chartered on reasonable terms on applying at the  
HEAD OFFICE, MONTREAL, or to the AGENT  
at OTTAWA (Queen's Wharf).

---

## CALEDONIA SPRINGS, THE SARATOGA OF CANADA.

Passengers for the celebrated CALEDONIA SPRINGS will  
be landed at L'Original, where they take stages for Springs. This  
is the river route to the Springs.

**RETURN TICKETS, INCLUDING STAGE, AT LOW RATES,  
GOOD FOR THE SEASON.**

From Montreal, return, both ways by boat	- - - -	\$3.70
" " round trip, C. P. R., and return by boat,	- - - -	
or vice versa	- - - -	4.00
" Ottawa, return (boat)	- - - -	3.00

---

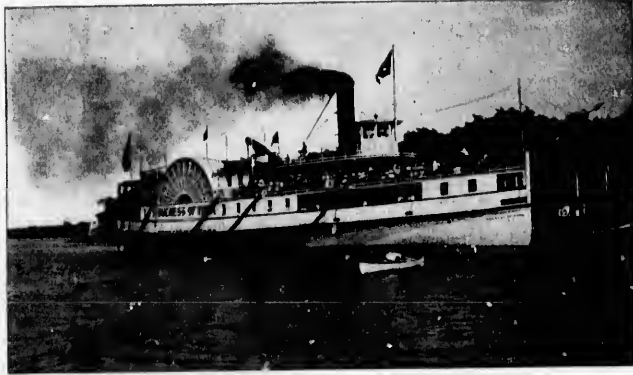
## Summer Hotels and Boarding-houses.

- ST. ANNE'S—Clareudon Hotel.
- OKA—Two Hotels and several Boarding-houses.
- COMO—Mme Brasseur's first-class Boarding-house.
- HUDSON—Hudson Hotel and Hodgson Bros.' Boarding-house.
- RIGAUD—Hotels and Boarding-houses.
- CARILLON—Sovereign Hotel, Kelly's Hotel, and the **Bellevue Boarding-house** (Mrs. Gaherty's). N.B.—The Bellevue Boarding-house has lately come under new management. Visitors and guests will find there most excellent accommodation and board.
- ST. ANDREWS—Sauvé Hotel and several Boarding-houses.
- GRENVILLE—Mrs. McIntyre, Hotel, etc.
- L'ORIGINAL—Ottawa Hotel and L'Original Hotel.
- CALEDONIA SPRINGS—THE GRAND HOTEL and Lake View House.
- MONTEBELLO—Hotel and Boarding-houses.
- THURSO—"Ottawa Beach House," Mr. Gaunt, proprietor, (late of the Inch Arran House). Excellent table and accommodation. House is near steambot landing.
- BESSERER'S—"Jubilee House," Summer Hotel.

N.B.—All the above places are reached by DAILY LINE STEAMERS.

COMMUTATION TICKETS AT REDUCED RATES ISSUED.

## MOONLIGHTS. PILGRIMAGES. PIC-NICS.



THE "DUCHESS OF YORK" AT SHERRINGHAM PARK.

. . . THE . . .

### Steamer "Duchess of York"

is a new steel steamer built especially for carrying a large number of passengers, with all modern conveniences, and fitted with electric lights. This steamer is open for charter: *Lachine Rapids, Day Excursions or Moonlights.*

### SHERRINGHAM PARK

is on Isle Perrot, a secluded spot, and a charming place for pic-nics.

The Park is furnished with cottage and other conveniences, covered platform for dancing, swings, tables, seats and playground.

There is splendid fishing and perfectly safe boating, and row-boats may be hired at reasonable rates.

The steamer "DUCHESS OF YORK" may be chartered for Sherringham Park *or elsewhere.* Apply at

**165 COMMON STREET.**

R. W. SHEPHERD,

*Managing Director O. R. N. Co.*

TEL. 1029.

## MARKET LINES.

The Steamer **PRINCESS** leaves Montreal at 6 a.m. every WEDNESDAY and SATURDAY for

**St. Anne's, Oka, Como, Hudson, Pt. Anglais,  
St. Placide, Rigaud, St. Andrews,  
Carillon, Pt. Fortune,**

with passengers and freight, arriving at Montreal every MONDAY and THURSDAY about 1.30 p.m.

The Steamer **MAUDE** leaves Montreal on TUESDAYS and FRIDAYS at 6.30 p.m. for

**Chute Blondeau, Grenville, Hawkesbury, L'Original,  
Montebello, Papineauville, Brown's Wharf,  
Kain's Wharf, Ottawa, etc.**

Arrives at Montreal every MONDAY, about 2 p.m., and THURSDAY, about 11.30 a.m.

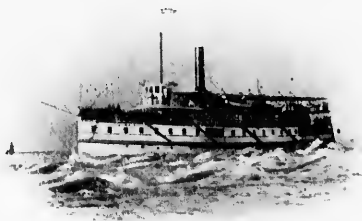
**Head Office: 161 to 165 Common St., Canal Basin,  
MONTREAL.**

---

## Richelieu and Ontario Navigation Co.

**"NIAGARA TO THE SEA."**

The Finest Inland Water Trip in the World.



Steamers leave TORONTO, calling at CHARLOTTE (Port of Rochester), KINGSTON, CLAYTON, N.Y., ALEXANDRIA BAY, N.Y., through the THOUSAND ISLANDS and down all the RAPIDS OF THE ST. LAWRENCE, to MONTREAL, QUEBEC, the Summer Resorts of the Lower St. Lawrence and the far-famed SAGUENAY.

The splendid new steamer "TORONTO" goes into commission June 13th.

Write for our Illustrated Guide Book "NIAGARA TO THE SEA."

**C. F. GILDERSLEEVE,**  
General Manager.

**G. A. BROWNE,**  
Traffic Manager.

General Offices: 228 St. Paul Street, Montreal, P. Q.

# New Boat and Rail Tour,

COMPRISING

**The Ottawa River,  
The Georgian Bay,  
The St. Lawrence River.**

---

## ROUTE.

**MONTREAL TO OTTAWA**, by Ottawa River Navigation Co. Steamers.

**OTTAWA TO PARRY SOUND**, by Ottawa, Arnprior & Parry Sound Railway.

**PARRY SOUND TO PENETANG**, through the grand scenery of the Georgian Bay, by N. S. Nav. Co. Steamers.

**PENETANG TO TORONTO**, by Grand Trunk Railway.

**TORONTO TO KINGSTON**, by Grand Trunk Railway.

**KINGSTON TO MONTREAL**, by Richelieu & Ontario Navigation Company Steamers, *via* the Thousand Islands and St. Lawrence Rapids.

The above tour is one of the **FINEST IN AMERICA**, taking in, without doubt, the most picturesque river and lake scenery; and this trip has only been possible since the opening of the Ottawa & Parry Sound Railway.

---

Tickets may be procured from any Grand Trunk Agent at the above mentioned starting points.

At Montreal, tickets may be procured from the

**OTTAWA RIVER NAVIGATION CO.'S OFFICES,**

ALSO,

**GRAND TRUNK RAILWAY OFFICES.**



# A Grand All-Boat Trip, NEW AND CHARMING,

. . . VIA . . .

The Picturesque Ottawa River to Ottawa ;

. . . THENCE . . .

Through the Surpassingly Beautiful Scenery of the  
Rideau River and Lakes ;

. . . AND . . .

Down the St. Lawrence from Kingston to Montreal by  
Boat, through the famous Thousand Islands  
and Rapids of the St. Lawrence.



This trip occupies four days and three nights, starting from Montreal, and all by boat.

Mr. J. W. Burdick, the well-known General Passenger Agent of the Delaware & Hudson Canal Company's Railway, who made the trip up the Ottawa and through the Rideau Lakes, in 1894, says :

"It is one of the finest boat trips on the Continent.  
*Much too fine to be buried in oblivion.*"

Every year this ALL-BOAT TRIP is becoming more popular. The beautiful picturesqueness of the Ottawa River and the charming and entrancing panorama of the Rideau Lakes cannot be surpassed anywhere.

The Round Trip Ticket costs \$11, including meals and berths on the Rideau boat. The trip can be done easily, including all meals on the other lines as well as hotel charges at Ottawa and Kingston, for about sixteen dollars.

The Tourist may leave Montreal on a Monday or Thursday, at 8 a.m., *via* Ottawa River steamer to Ottawa, arriving there at 6.30 p.m. Spend the night at Ottawa. As the steamer "James Swift" does not leave Ottawa until 3 p.m., the tourist has a whole half day to see the many sights of the capital of Canada. The steamer "James Swift" arrives at Kingston the following evening about 6 p.m. The night is spent at Kingston, either at the Frontenac or some other hotel, and an early start is made by R. & O. N. Co. steamer the next morning for Montreal, from the dock opposite the Frontenac, arriving at Montreal *via* the Rapids about 6.30 p.m.

**Undoubtedly this is one of the Jolliest Trips in America.**

If the tourist has the time, it would be worth while to stop over at Kingston a day in order to make an excursion up the beautiful Bay of Quinte, by one of the numerous excursion steamers that ply on the bay.

Str. "James Swift" leaves Ottawa 3 p.m. Tuesdays and Fridays.  
Do leaves Kingston 6 a.m. Mondays and Thursdays.

# Spend your Summer at Aylmer, Quebec,

and Shoot the Chute at Queen's Park.

ONLY 30 MINUTES RIDE FROM OTTAWA  
OVER THE FINEST EQUIPPED ELECTRIC  
RAILWAY IN CANADA.

**T**HE HULL ELECTRIC COMPANY'S CARS leave  
Hull, from the Ottawa Electric Railway terminus,  
every 15 minutes in Summer, running through to  
Aylmer, Hotel Victoria, and Queen's Park.

## LAKE DESCHENES affords Splendid Boating, Good Fishing and Bathing.

STEAMBOAT EXCURSIONS on Wednesdays and  
Saturdays to CHATS RAPIDS and QUVOX, part of the  
route of Ottawa and Georgian Bay Canal.

**HOTEL VICTORIA**, delightfully situated on the  
shore of Lake Deschenes.

For rates apply to

F. X. ST. JACQUES,

Proprietor (The Russell, Ottawa, Ont.  
( Hotel Victoria, Aylmer, Que.

For further particulars write

**W. R. TAYLOR,**

Sec.-Treas. The Hull Electric Co.

Aylmer, Quebec.

ESTABLISHED 1842.

# A. RAMSAY & SON,

## ...Paint Makers...

Office and  
Warehouse :

37, 39 & 41  
Recollet Street.



TRADE MARK.

Factories :

16 to 22  
Inspector St.  
106 William St.

... WE MANUFACTURE ...

*Ramsay's Pure Mixed Paints,*  
*Ramsay's Pure White Lead,*  
*Ramsay's Exterior White Lead,*  
*Ramsay's Pure Colors in Oil,*  
*Ramsay's Superfine Coach Colors,*  
*Ramsay's Coach and Carriage Varnishes,*  
*Ramsay's House Varnishes,*  
*Dry Colors, Kalsomines, Etc., Etc.*

WE ARE HEADQUARTERS FOR

*Window Glass, Picture Glass,*  
*Ornamental Glass, Paint Brushes,*  
*Glaziers' Diamonds, Glues,*  
*Chamois Skins, Etc., Etc.*

WE ARE SOLE AGENTS FOR

**MURALO**, *the Latest, Best and Improved*  
*Sanitary Cold Water Wall Tint.*

**WINSOR & NEWTON**, *Fine Artists' Colors.*

**MONTREAL.**



A few of the Islands on Lake Opinicon.



S  
o  
m  
m  
is  
s  
  
a  
h  
S  
v  
o  
  
t  
t  
  
c

## KINGSTON AND OTTAWA

VIA

### RIDEAU RIVER AND LAKES.



PROBABLY no trip is attracting more of the attention of tourists just now than that between Kingston and Ottawa *via* the Rideau Canal. The distance is 126½ miles, and the journey is made by the steamer "James Swift" in twenty-six hours. The Rideau is not an ordinary canal. It is a waterway between the two cities mentioned, made by connecting a large number of the most beautiful lakes on the continent. The actual canal is comparatively short, while the lakes afford delightful sails and scenery, and invigorating air.

The canal was constructed by the British Government as a military work, at a cost of five million dollars, as far back as 1830. If, in time of war, the navigation of the St. Lawrence was interrupted, this canal, in conjunction with the Ottawa River, would furnish direct communication between Montreal and the great lakes.

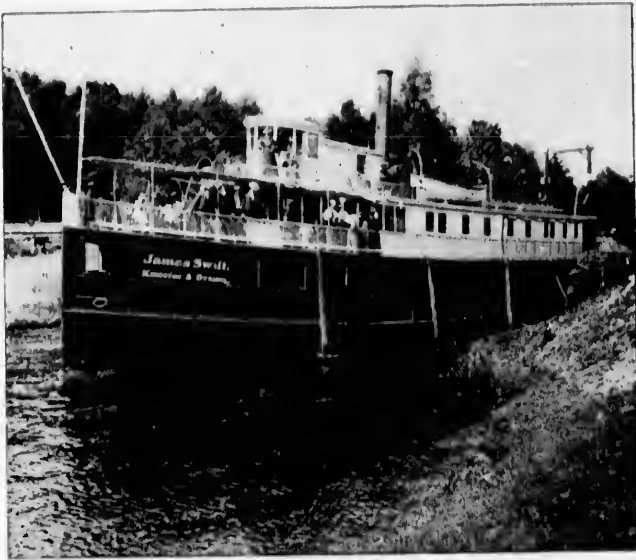
Cranberry Lake is a large expanse of water, and contains many islands of considerable extent. Connected to the north are several lakes in which there is superb fishing.

**Jones' Falls** is one of the most beautiful spots in Ontario. It is not only beautiful, but interesting and historic. The dam at the falls is a stupendous piece of



The "Quarters," near Jones' Falls, on the Rideau.

work, and at the time it was built was the largest structure of the kind in the world. Read the size of it: four hundred feet long, three hundred and one feet thick at the base and ninety feet high. It is horseshoe in shape, and the mason work is most enduring. The locks, four in number, were cut through the solid rock, and each one lifts the boat twenty-two feet. At the top is simply fairy-land. There are many nooks, bays and inlets, and pretty places which are taken advantage of by camping



parties. No better fishing exists anywhere than there is in this locality. An empty string on a fishing journey is an unknown thing here.

Leaving Jones' Falls, "The Quarters" are entered. Here is where the headquarters of the construction staff were established. Sand Lake is next entered.

The next lake is Opinicon or Wild Potatoe Lake. It is six miles long and two wide, and is literally covered with islands.

Passing through Chaffey's Locks, Indian Lake is reached. Its shores are high and rugged and the scenery wild. The steamer glides through a little isthmus and into Clear Lake, and later through Fiddler's Elbow, a mystifying place, into Newboro Lake, which is dotted with beautiful islands of different sizes.

Touching at Newboro, a pretty village of one thousand inhabitants, the boat is lifted by the last lock



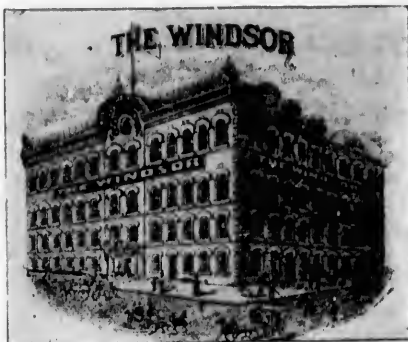
The Russell, Ottawa.

on the up-grade, and then passes through a cut, a mile long, and into Little Rideau Lake, which is the summit level.

The next body of water is Big Rideau, which is twenty-one miles

long, and varies in width from one to eight miles. There are fully two hundred islands in this lake.

The last lock is Hartwell's, about two miles from Ottawa. Passing through it the steamer enters Mutchmore's Cut, the shores of which are lined with cedars and summer residences. The deep cut, about a mile in length, is navigated, and the steamer drops into the basin at Ottawa.



The Windsor, Ottawa.

The hotel accommodation in

Ottawa is excellent; the Rusell is the largest and best known, the Windsor, the Grand Union and the Brunswick are comfortable home-like hotels, all centrally situated and offering good accommodation to travellers.

The "James Swift" leaves Ottawa for Kingston every Tuesday and Friday at 3 p.m. Write to D. NOONAN, Kingston, for Guide-Book.



Canoe manufactured by Dey Bros., Ottawa.

**TIME-TABLE FROM OTTAWA TO KINGSTON.****Steamer "James Swift"**

will leave the Ottawa Forwarding Co. Wharf, Canal Basin, Ottawa,  
every Tuesday and Friday, at 3 p.m., calling at

Manotick . . . . .	6.30 p.m.
Lindsay's Wharf . . . . .	7.30 "
Beckett's Bridge . . . . .	8.30 "
Burrill's Rapids . . . . .	9.30 "
Merrickville . . . . .	11.15 "
Smith's Falls, Wednesday and Saturday . . . . .	5.00 a.m.
Oliver's Ferry . . . . .	6.45 "
Portland . . . . .	8.00 "
Westport . . . . .	9.45 "
Newboro . . . . .	10.30 "
Jones' Falls . . . . .	1.00 p.m.
Seeley's Bay . . . . .	1.45 "
Kingston Mills . . . . .	5.00 "
Kingston . . . . .	7.00 "

**Fare—Ottawa to Kingston, \$5.00; Return, \$9.00.**

**TIME-TABLE FROM KINGSTON TO OTTAWA.****Steamer "James Swift"**

will leave Swift's Wharf, Kingston, every Monday and Thursday  
at 6 a.m., calling at

Kingston Mills . . . . .	7.00 a.m.
Seeley's Bay . . . . .	10.30 "
Jones' Falls . . . . .	11.30 "
Newboro . . . . .	2.30 p.m.
Westport . . . . .	3.30 "
Portland . . . . .	5.00 "
Oliver's Ferry . . . . .	6.15 "
Smith's Falls . . . . .	8.00 "
Merrickville . . . . .	11.00 "
Burrill's Rapids . . . . .	1.00 a.m.
Beckett's Bridge, Tuesday and Friday . . . . .	2.15 "
Lindsay's Wharf . . . . .	3.15 "
Manotick . . . . .	4.30 "
Ottawa . . . . .	8.00 "

*Right reserved to alter above time-table without notice.*

**Fare—Kingston to Ottawa, \$5.00; Return, \$9.00.**

Children over five years and under twelve, half fare; twelve and over, full fare. Children occupying a chair at the table will be charged full fare for meals.

Write for Guide-Book to

**CAPT. D. NOONAN, PROPRIETOR,  
KINGSTON, ONT.**



When Visiting Ottawa, call on \_\_\_\_\_

# McMILLAN'S

for **SOUVENIR SPOONS, BELT BUCKLES, PINS, BROOCHES,**  
and other Sterling Silver Novelties.

Best value in Canada in

**DIAMONDS** All Sizes. Only Fine Quality kept in Stock, at

**A. McMILLAN, Jeweller & Optician,**

Telephone 1145.

82 SPARKS STREET.

EYES EXAMINED FREE OF CHARGE BY A GRADUATE OPTICIAN.

# The Brunswick,

JOHN HUCKELL,  
PROPRIETOR.

122, 124 & 126 SPARKS STREET,

OTTAWA, ONT.

*Best \$1.00 & \$1.50 a day  
House in Canada.*

*First Class in all its  
Appointments.*

IMPORTED LIQUORS AND CIGARS.

ALL ELECTRIC CARS PASS THE DOOR.

TELEPHONE 196.



The...

# Windsor,

OTTAWA,  
CANADA.

Further Enlargement of 40 Rooms.

RATES GRADUATED ACCORDING TO LOCATION  
OF ROOMS.

DN.

ttawa,

p.m.

"

"

"

"

a.m.

"

"

"

"

"

p.m.

"

"

"

"

"

WA.

ursday

00 a.m.

30 "

30 "

30 p.m.

"

"

"

15 "

00 "

00 "

00 a.m.

15 "

15 "

30 "

00 "

00.

; twelve

ble will

N, ONT.

## • Balmoral Castle Hotel, • MONTREAL.

One of the most centrally located  
Hotels in the City.  
Accommodation for 400 Guests.

A. ARCH. WELSH,  
PROPRIETOR.

This favorably known hotel has recently been refitted at a cost of \$40,000. It is conducted on the American and European plans; and is palatial in appointment, yet home-like. Elegant lofty Dining Hall, Ball Room and Café. The improvements include new plumbing and modern sanitary arrangements; new carpets and furniture; also, the conduit system of electric lighting—the safest in the world.

FINE CUISINE UNDER AN EXPERIENCED FRENCH CHEF  
AND PERSONAL SUPERVISION. TABLE D'HOTE. MUSIC, 5 TO 8 P.M.  
FREE BUSES MEET ALL TRAINS AND BOATS.

Street cars to all parts of the City pass  
the door every two minutes.

TERMS:  
American Plan, \$2.00 to \$4.00  
European, \$1.00 and upwards.

## R. ANDERSON,

*Electrical*  
—♦—  
*Contractor,*

158 CANAL ST.,

OTTAWA, ONT.

TELEPHONE 958.

ESTABLISHED 1860.

## Dey Bros. Canoe & Boat Works,

CANAL BASIN, OTTAWA, ONT.



Canoes, Skiffs, Yachts,  
Lumbermen's Batteaux  
(Sail or Steam), Racing  
Craft, Oars, Paddles,  
Sails, Nickel Goods,  
in Stock or Furnished to  
Order.

OUR TANDEM RACING CANOES  
ARE THE FASTEST IN CANADA.

# The "Russell"



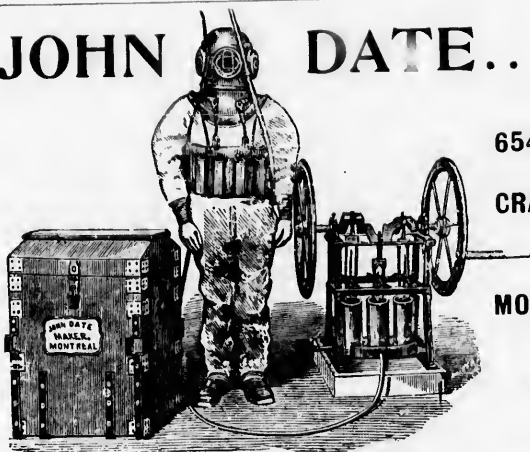
## Ottawa, Canada.



F. X. St-Jacques,

.... Proprietor.

# JOHN DATE...




654 &amp; 656

CRAIG ST.

MONTREAL.



## Brass Founder <sup>AND</sup> Goppersmith.


 Diving Apparatus —————  
 Patent Dry-Earth Closet Commodes.

Plumber, Gas and Steamfitter.

ELECTRIC BELLS AND WIRING.

## JAMES M. AIRD,

MANUFACTURER OF

## Bread, Cakes & Candies

Factory & Office: 99 & 103 St. Urbain Street.

RETAIL STORES:

1859 Notre-Dame Street,  
2721 St. Catherine Street,

469½ St. Lawrence Street,  
103 St. Urbain Street,

Telephones, Main 1025, Main 1340, Up 1182, East 488, Montreal.

## Quick Work.

We Make a Specialty  
of Quick Work for  
Travellers.

WHEN IN OTTAWA TRY THE

## STAR LAUNDRY CO.

... 48 Queen Street.

PHONE 577.

## FRASER, VIGER & Co. Italian Warehouse,

The Leading House in Canada for 207, 209 & 211 St. James St.  
Fine Groceries, Provisions,  
Wines, Liquors & Fine Havana Cigars. MONTREAL.

## VACUUM OIL COMPANY. High-Grade Cylinder & Engine Oils.

Main Office: Rochester, N.Y., U.S.A.  
Montreal Office and Warehouse: 487 St. Paul Street.  
H. MOONEY, AGENT.

ESTABLISHED 1869.

## ...J. H. WILSON...

IMPORTER AND DEALER IN

*Shelf and Heavy Hardware,  
Bar and Hoop Iron,  
Paints, Oils, Varnishes,  
Carriage Wood and Trimmings,  
Stoves and Tinware,  
Drain Pipe, Cement, &c., &c.*



1874 NOTRE-DAME STREET, .... MONTREAL.  
BRANCH IN VALLEYFIELD.

## J. P. & F. W. ESMONDE General House Furnishers,

Manufacturers of Baskets and Willowware, Tin and Copper Workers.  
38 RIDEAU STREET, OTTAWA, ONT.

The Capital, Palace, Excelsior and Windsor Market Meat Shops.

## SLATTERY & TERRANCE ...Butchers...

Purveyors to His Excellency the Governor-General.  
Hotels, Steamboats and Private Families  
supplied with the Best of Meats  
on the shortest notice

Importers and Manufacturers of  
Fine Table Delicacies.

...The...

# McKAY MILLING CO.'S

ROYAL AND DUPLEX PATENTS.

**Strong Bakers  
and Family Flours.**

**KY** ROLLED OATS  
ROLLED WHEAT.

**Golden Crown Cornmeal.**

*Best in the World.*

*Just Try Them.*

OTTAWA, Ont.

W. G. CHARLESON,

Everything in

Hardware,

79, 81 & 83 Rideau Street,

Telephone 1403.

(Workman's Old Stand)

OTTAWA, Ont

**JAMES A. OGILVY & SONS,**

**The Largest Exclusive  
Dry Goods Store in Canada.**

CORNER ST. CATHERINE AND  
MOUNTAIN STREETS,

... MONTREAL.

**J. HOPE & SONS,**

**Manufacturing Stationers,**

... **Booksellers, Bookbinders and Printers...**

**ARTISTS' MATERIALS.**

DEPOSITORY:

45, 47, 49 Sparks & 26 Elgin St.,

OTTAWA AUXILIARY BIBLE SOCIETY.

OTTAWA, CAN.

MOTTO: "THE BEST."

On the boat, and at all stopping places, ask for

**GURD'S** { *GINGER ALE,  
SODA WATER,  
CREAM SODA,  
APPLE NECTAR,  
KOLA, Etc., Etc.*

Also, note that Caledonia leads all  
Natural Mineral Waters.

**CHARLES GURD & Co. MONTREAL.**

---

**THOMAS LIGGET,**

IMPORTER OF

**Carpets, Curtains, Floor Cloths,**

175 to 179 Sparks Street, OTTAWA,

Glenora Buildings, MONTREAL.

---

...The...

**Imperial Oil Company,  
Limited.**

**LUBRICATING OILS ILLUMINATING**

**GREASES, NAPHTHA.**

---

124, 126 & 128 Board of Trade Building,  
MONTREAL.

---

BELL TELEPHONE, MAIN 552 & 899.

MERCHANTS TELEPHONE, 926.



**JOHN M. GARLAND SON & CO.,**  
**Wholesale Dry Goods,**

146, 148, 150 & 152 Queen Street,  
 45, 47, 49 & 51 O'Connor Street,

... OTTAWA, Ont.

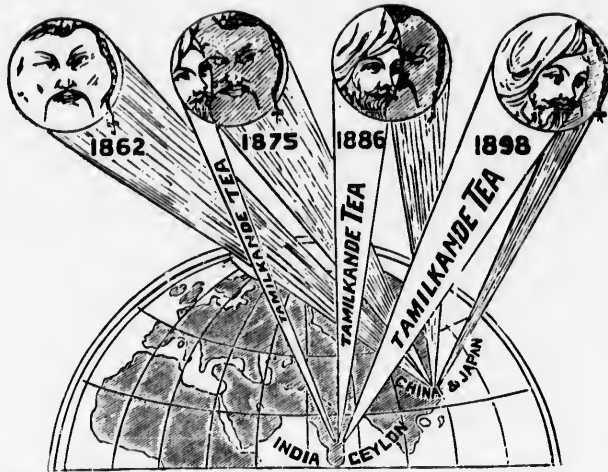
*Departments :*

- A*—Staples.
- B*—Colored Cottons, Prints and Linens.
- C*—Cloths, Tweeds and Tailors' Trimmings.
- D*—Dry Goods and Linings.
- G*—Men's Furnishings.
- H*—Small Wares and Ribbons.
- T*—Carpets and House Furnishings.

**Large Stock, Up-to-date Goods, Right Prices, Liberal Terms.**  
 See our Stock, either in the House  
 or with our Travellers.

Letter Orders received before 3 p.m., filled same day.





**ALMOST A TOTALITY...**

Your father will remember when the ECLIPSE was in its penumbral stage only. Nowadays TAMILKANDE teas—British grown teas remember—are in the ASCENDANT the world over—just like other things British.

Sealed Lead Packets only, 25c., 30c., 40c., 50c., 60c.

TAMILKANDE TEA CO., IMPORTERS,  
18 ST. MAURICE ST., MONTREAL.

DIRECT IMPORTERS OF ASSAM AND CEYLON TEAS.  
WRITE FOR SAMPLE ORDER.

**The Foremost Pianos of the Day, and  
Largest Selection in Canada.**



STEINWAY,  
KNABE,  
NORDHEIMER,  
MASON & RISCH,  
GERHARD HEINTZMAN.

**Pianos of Noble Tone and Exquisite Finish.**

SOLE AGENTS:

**J. L. ORME & SON,**

189 SPARKS STREET,

....OTTAWA.

**Grand Union Hotel,** Corner Chain and Queen Sts.  
Ottawa. H. A. SANDERSON

## Birkett's Sporting Emporium

HEADQUARTERS FOR  
SPORTING GOODS OF ALL KINDS.

Guns, Rifles, Ammunition,  
Shells Loaded to Order,  
Hunting Outfits,  
Camping Outfits,



Fishing Tackle,  
Shelf & General Hardware.  
Opera and Field Glasses,  
Cutlery of all kinds,

... AGENTS FOR ...

Winchester Arms and Ammunition,  
Marlin Sporting Rifles and Savage Rifles.

**MILES BIRKETT,**

TELEPHONE 882.

334 Wellington St., OTTAWA.

CORKS,  
COFFEES,  
SPICES.

**S. H. EWING & SONS,**

IMPORTERS AND  
MANUFACTURERS.

Factory: 100 to 104 King St.

**MONTREAL.**

BELL TELEPHONE, MAIN 65.  
MERCHANTS' TELEPHONE, 522.

**Green Mountains**

OF VERMONT  
TO

**Georgian Bay**

LAKE HURON  
BY THE

**Canada Atlantic and  
Ottawa, Arnprior and  
Parry Sound Railways.**

These lines open a country of great  
interest to the Tourist and Sportsman.  
Ask nearest Agent for folder and full  
information, or write to

C. J. SMITH,  
GEN. TRAFFIC MANAGER.  
J. E. WALSH,  
ASS. GEN. PASS. AGENT.

General Offices: OTTAWA, Ont.

**Grand Union Hotel,** Ottawa.

