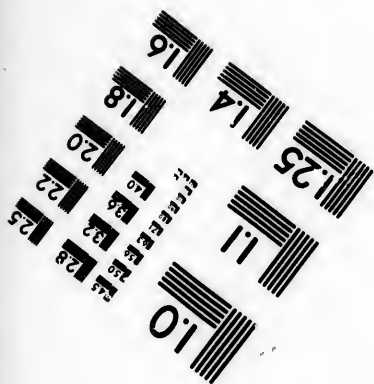
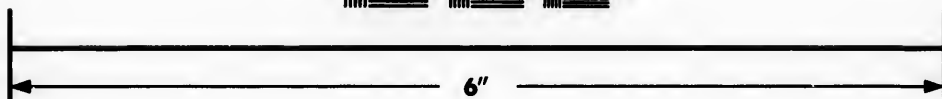
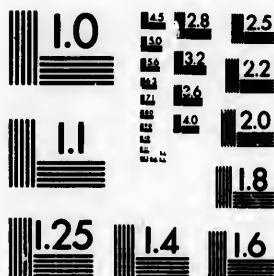


**IMAGE EVALUATION
TEST TARGET (MT-3)**



**Photographic
Sciences
Corporation**

23 WEST MAIN STREET
WEBSTER, N.Y. 14580
(716) 872-4503



**CIHM/ICMH
Microfiche
Series.**

**CIHM/ICMH
Collection de
microfiches.**



Canadian Institute for Historical Microreproductions / Institut canadien de microreproductions historiques



© 1986

Technical and Bibliographic Notes/Notes techniques et bibliographiques

The Institute has attempted to obtain the best original copy available for filming. Features of this copy which may be bibliographically unique, which may alter any of the images in the reproduction, or which may significantly change the usual method of filming, are checked below.

L'Institut a microfilmé le meilleur exemplaire qu'il lui a été possible de se procurer. Les détails de cet exemplaire qui sont peut-être uniques du point de vue bibliographique, qui peuvent modifier une image reproduite, ou qui peuvent exiger une modification dans la méthode normale de filmage sont indiqués ci-dessous.

- Coloured covers/
Couverture de couleur
- Covers damaged/
Couverture endommagée
- Covers restored and/or laminated/
Couverture restaurée et/ou pelliculée
- Cover title missing/
Le titre de couverture manque
- Coloured maps/
Cartes géographiques en couleur
- Coloured ink (i.e. other than blue or black)/
Encre de couleur (i.e. autre que bleue ou noire)
- Coloured plates and/or illustrations/
Planches et/ou illustrations en couleur
- Bound with other material/
Relié avec d'autres documents
- Tight binding may cause shadows or distortion
along interior margin/
La reliure serrée peut causer de l'ombre ou de la
distorsion le long de la marge intérieure
- Blank leaves added during restoration may
appear within the text. Whenever possible, these
have been omitted from filming/
Il se peut que certaines pages blanches ajoutées
lors d'une restauration apparaissent dans le texte,
mais, lorsque cela était possible, ces pages n'ont
pas été filmées.
- Additional comments:/
Commentaires supplémentaires:

- Coloured pages/
Pages de couleur
- Pages damaged/
Pages endommagées
- Pages restored and/or laminated/
Pages restaurées et/ou pelliculées
- Pages discoloured, stained or foxed/
Pages décolorées, tachetées ou piquées
- Pages detached/
Pages détachées
- Showthrough/
Transparence
- Quality of print varies/
Qualité inégale de l'impression
- Includes supplementary material/
Comprend du matériel supplémentaire
- Only edition available/
Seule édition disponible
- Pages wholly or partially obscured by errata
slips, tissues, etc., have been refilmed to
ensure the best possible image/
Les pages totalement ou partiellement
obscurcies par un feuillet d'errata, une pelure,
etc., ont été filmées à nouveau de façon à
obtenir la meilleure image possible.

This item is filmed at the reduction ratio checked below/
Ce document est filmé au taux de réduction indiqué ci-dessous.

10X	14X	18X	22X	26X	30X
<input type="checkbox"/>	<input type="checkbox"/>	<input type="checkbox"/>	<input type="checkbox"/>	<input checked="" type="checkbox"/>	<input type="checkbox"/>
12X	16X	20X	24X	28X	32X

The co
to the p

TI
L

The im
possibl
of the
filming

Original
beginn
the last
sion, o
other o
first pa
sion, a
or illus

The las
shall c
TINUED
whiche

Maps,
differ
entirely
beginn
right a
require
metho

The copy filmed here has been reproduced thanks to the generosity of:

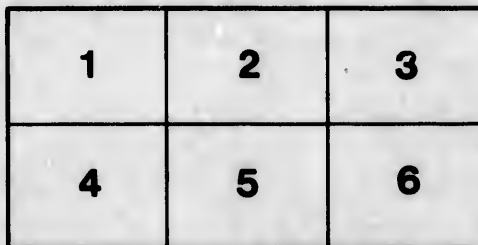
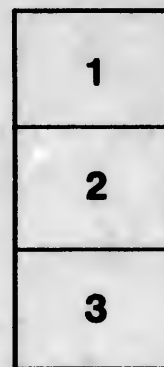
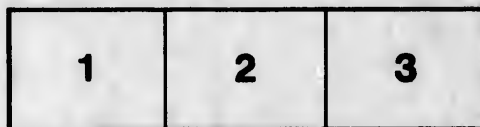
The Nova Scotia
Legislative Library

The images appearing here are the best quality possible considering the condition and legibility of the original copy and in keeping with the filming contract specifications.

Original copies in printed paper covers are filmed beginning with the front cover and ending on the last page with a printed or illustrated impression, or the back cover when appropriate. All other original copies are filmed beginning on the first page with a printed or illustrated impression, and ending on the last page with a printed or illustrated impression.

The last recorded frame on each microfiche shall contain the symbol \rightarrow (meaning "CONTINUED"), or the symbol ∇ (meaning "END"), whichever applies.

Maps, plates, charts, etc., may be filmed at different reduction ratios. Those too large to be entirely included in one exposure are filmed beginning in the upper left hand corner, left to right and top to bottom, as many frames as required. The following diagrams illustrate the method:



L'exemplaire filmé fut reproduit grâce à la générosité de:

The Nova Scotia
Legislative Library

Les images suivantes ont été reproduites avec le plus grand soin, compte tenu de la condition et de la netteté de l'exemplaire filmé, et en conformité avec les conditions du contrat de filmage.

Les exemplaires originaux dont la couverture en papier est imprimée sont filmés en commençant par le premier plat et en terminant soit par la dernière page qui comporte une empreinte d'impression ou d'illustration, soit par le second plat, selon le cas. Tous les autres exemplaires originaux sont filmés en commençant par la première page qui comporte une empreinte d'impression ou d'illustration et en terminant par la dernière page qui comporte une telle empreinte.

Un des symboles suivants apparaîtra sur la dernière image de chaque microfiche, selon le cas: le symbole \rightarrow signifie "A SUIVRE", le symbole ∇ signifie "FIN".

Les cartes, planches, tableaux, etc., peuvent être filmés à des taux de réduction différents. Lorsque le document est trop grand pour être reproduit en un seul cliché, il est filmé à partir de l'angle supérieur gauche, de gauche à droite, et de haut en bas, en prenant le nombre d'images nécessaire. Les diagrammes suivants illustrent la méthode.

ire
détails
es du
modifier
er une
filmage

es

y errata
d to
at
e pelure,
çon à



32X

7
9
1
+

750



Halifax

The Garrison City

ONE OF THE STRONGEST FORTRESSES IN THE WORLD ; IT IS THE HEADQUARTERS OF BRITAIN'S NAVAL AND MILITARY POWER ON THIS CONTINENT. ITS MIGHTY BULWARKS AND MAGNIFICENT HARBOR, ITS DELIGHTFUL PUBLIC GARDEN AND PARK, CITADEL, DOCKYARD AND FORTS. ILLUSTRATED IN OVER SEVENTY TYPICAL VIEWS.

W. G. MACFARLANE
Publisher *Scenic Canada Photo Album Series*
Toronto

NS
917.1622
H

HALIFAX

THE GARRISON CITY



THE world still loves the heroic, and the visible emblems of war always interest the sightseer. Halifax is essentially a Garrison City, and divides honors with Quebec in its interest to Americans, the latter being a typical old-world Continental city, while Halifax is thoroughly English. The Americans who visit these two cities are entering foreign lands. They are seeing the old world transplanted into the new.

Halifax is English in everything, in its business habits, its social customs, its mode of dress, its amusements. And well it might be, it is nurtured by the treasury of the Navy and War Departments of the mother country. The best regiments of the line have been in garrison here, the finest cruisers have ridden at anchor at the dockyard. England's bravest soldiers and sailors have led Halifax society, thousands of Tommies and Jack Tars have daily gone about their avocations at the port.

Halifax has a great importance in the eyes of England, and is one of the strongest links in the chain of Britain's Empire around the world. Here are the headquarters of the officer commanding the forces in British North America, and of the admiral commanding the North Atlantic Squadron. Halifax was founded a century and a half ago by Hon. Edward Cornwallis, and was named after the Earl of Halifax, a statesman of the time. Its magnificent harbor made it the natural military capital of Great Britain in the New World. Millions have been expended upon fortifications which bristle on every hand. The navies of the world could ride at anchor upon its spacious harbor. The approaches are guarded by a number of forts on either side. First are York Redoubt and Spion Kop; then at either end of McNab's Island, which lies directly across the harbor mouth, are Ive's Point Battery and Fort McNab. Next comes George's Island with Fort Charlotte. To the left is

*Antiquary
May 103 30 2996
87 30*

Point Pleasant Battery at the extreme southern extremity of the peninsula upon which Halifax is situated. On the city side of the harbor are also Fort Ogilvie and Fort Cambrige, while Fort Clarence is across on the Dartmouth shore.

High over the city rise the frowning battlements of the Citadel, Fort George, a gigantic work of engineering, full of mysterious passages, concealed batteries and secret arsenals. Other objects of interest are the dockyards, where the men-of-war of this station are outfitted; the flagship and cruisers of the North Atlantic Squadron, as they lie at their anchorage; the massive dry dock where the Indiana and other of Uncle Sam's warships have been repaired.

What with reviews, march outs, sham battles, bombardments, parades to garrison chapel and such like, the Tommies and Jack Tars make things very interesting for Halifax people and their guests during the summer months.

But the military features do not exhaust the list of attractions which Halifax offers. There is the beautiful public garden, one of the very finest on the continent; Point Pleasant Park, with its delightful drive ways cooled by Atlantic breezes; Bedford Basin, a broad expanse of water at the head of the harbor, delightful for boating, yachting, bathing and excursioning.

First-class hotels, excellent theatres, handsome public buildings, an efficient street car service, and good stores are other features that recommend Halifax as a place of residence or sojourn.

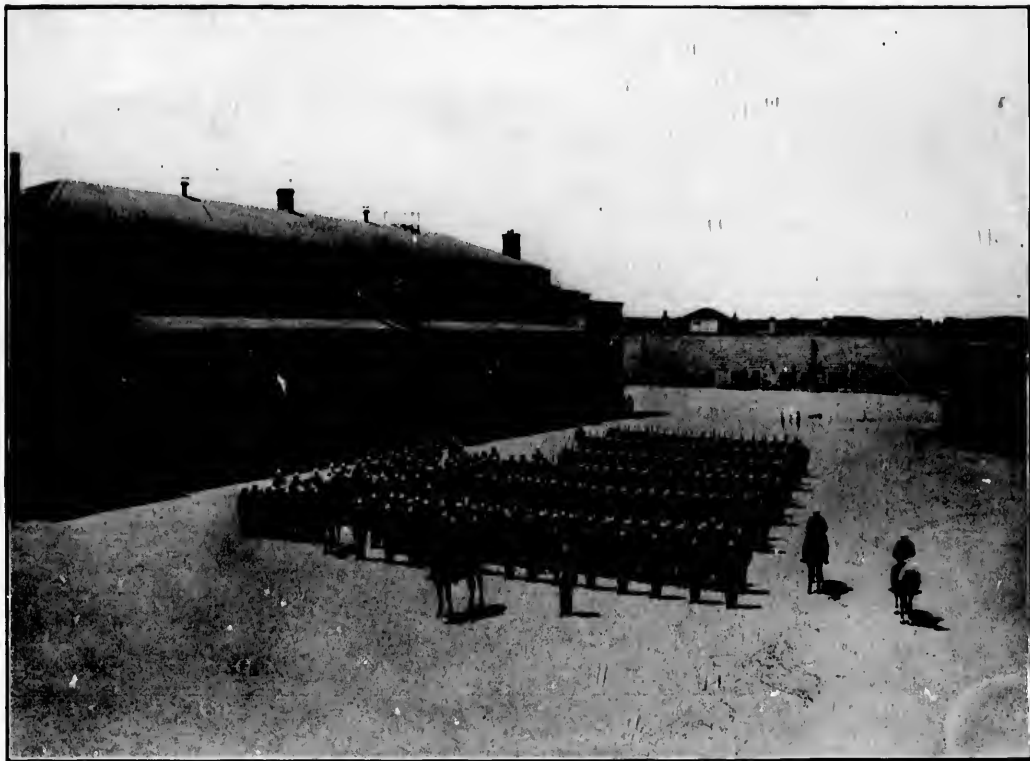




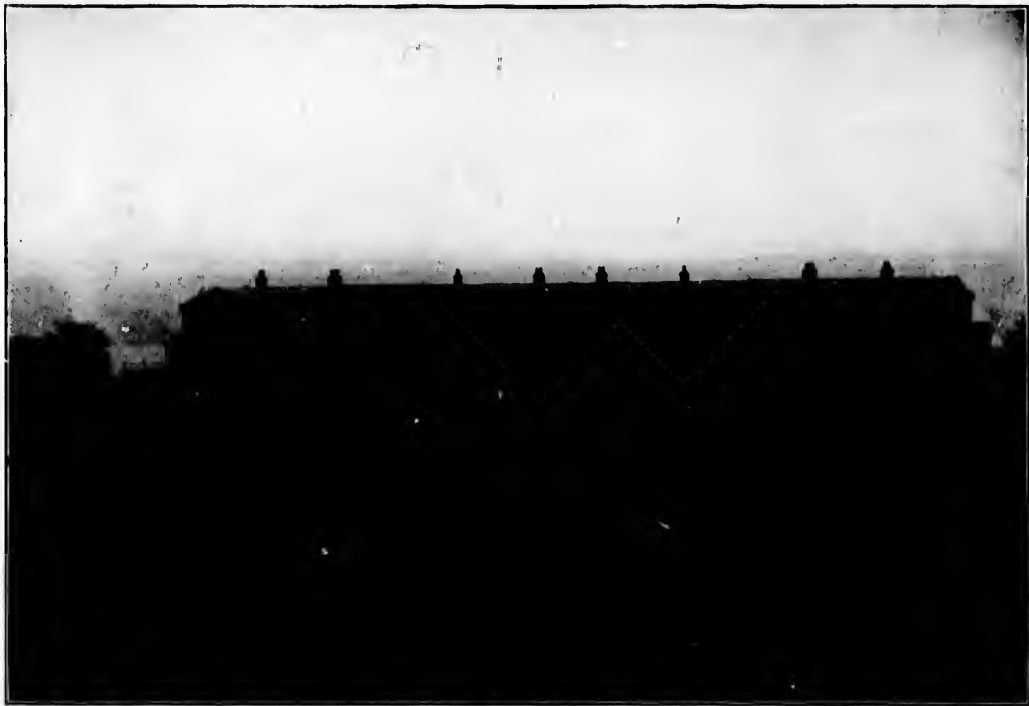
BARRINGTON STREET, HALIFAX



GATEWAY TO THE CITADEL



SQUADRON DRAWN UP INSIDE THE CITADEL



THE REGIMENT ON PARADE



RELIEVING GUARD IN WELLINGTON BARRACKS





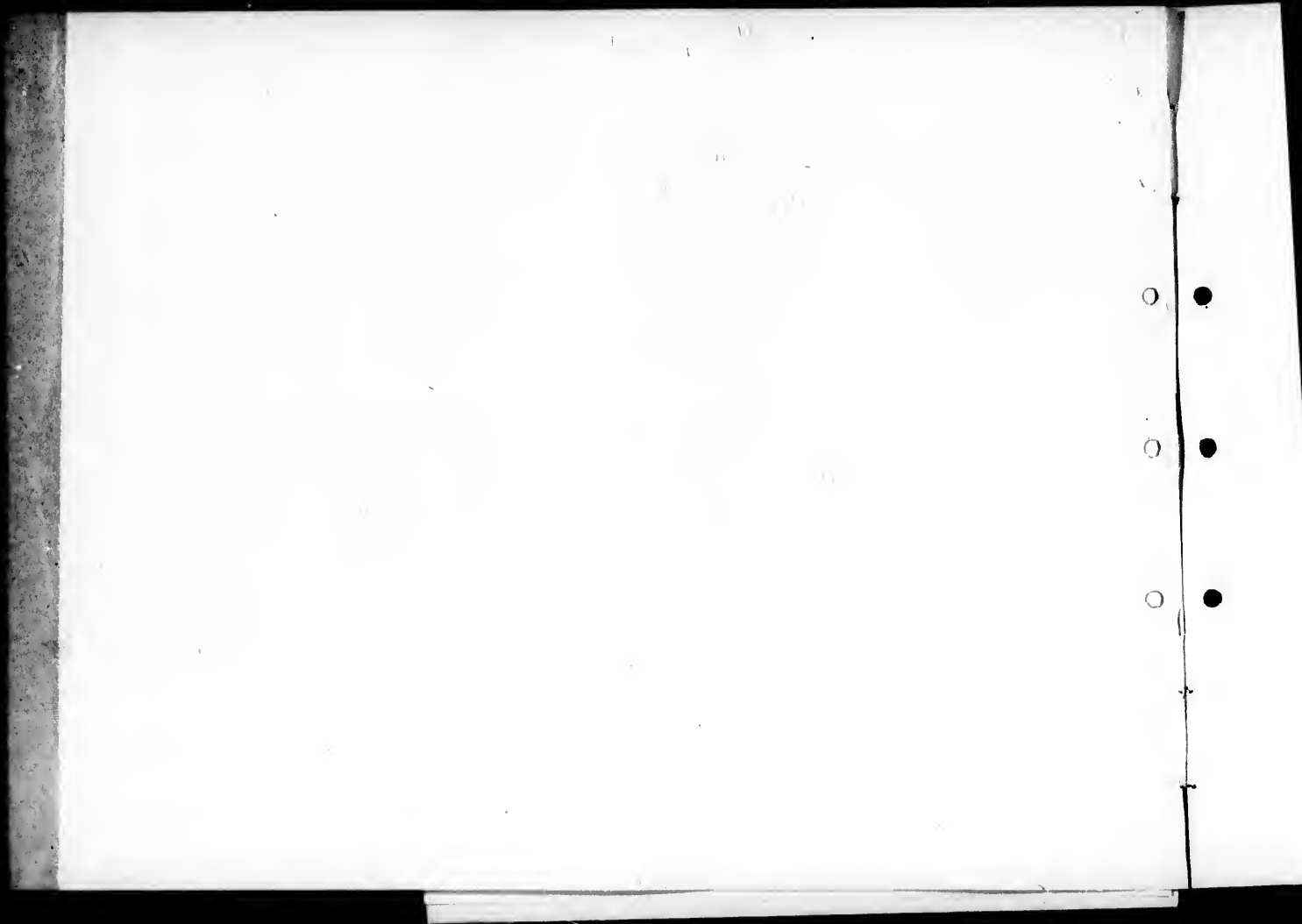
PANORAMIC VIEW OF HALIFAX

From the ramparts of the citadel the tourist obtains a comprehensive view of the City, and the magnificent proportions of the harbor crowning guns of the citadel and the fortifications on George's and McNab's Islands—guardians of the harbor's mouth. the anchorage of the North Atlantic Squadron, the harbor broadens into Bedford Basin, a beautiful s



PANORAMIC VIEW OF HALIFAX FROM THE CITADEL

The magnificent proportions of the harbor appear to excellent advantage. Here the freighters of a nation's commerce might ride in safety, protected by the islands—guardians of the harbor's mouth. Away to the right, at the entrance to the harbor, is Point Pleasant Park; while to the left, beyond the harbor, the water widens into Bedford Basin, a beautiful sheet of water. On the opposite side of the harbor is the suburban town of Dartmouth.



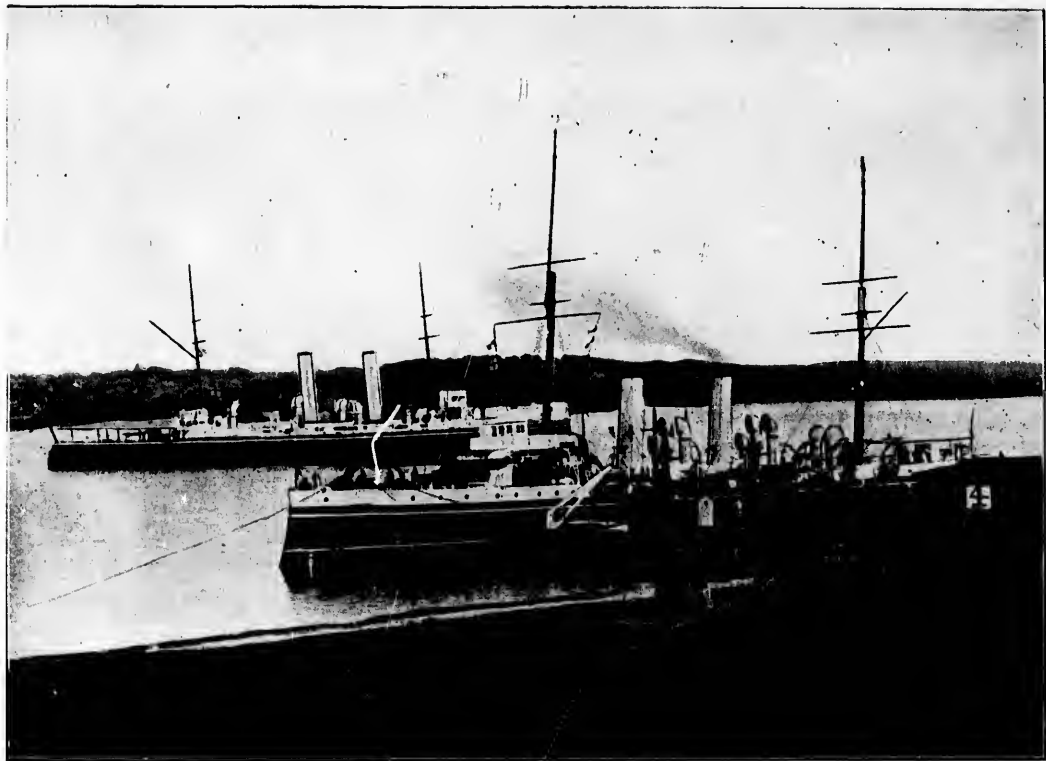


THE TOWN CLOCK AND CITADEL HILL



VOLUNTEER MONUMENT

Newly erected in honor of the Heroes who fell in South Africa.



MEN-OF-WAR AT THE DOCKYARD

...honor of the heroes who fell in South Africa.



Royal Yacht Ophir.

H.M.S. Pallas.

A PANORAMIC VIEW OF
Showing Yacht of His Royal Highness, the Duke of York,
H.M.S. Crescent

HA
an



VIEW OF
Lake of York,

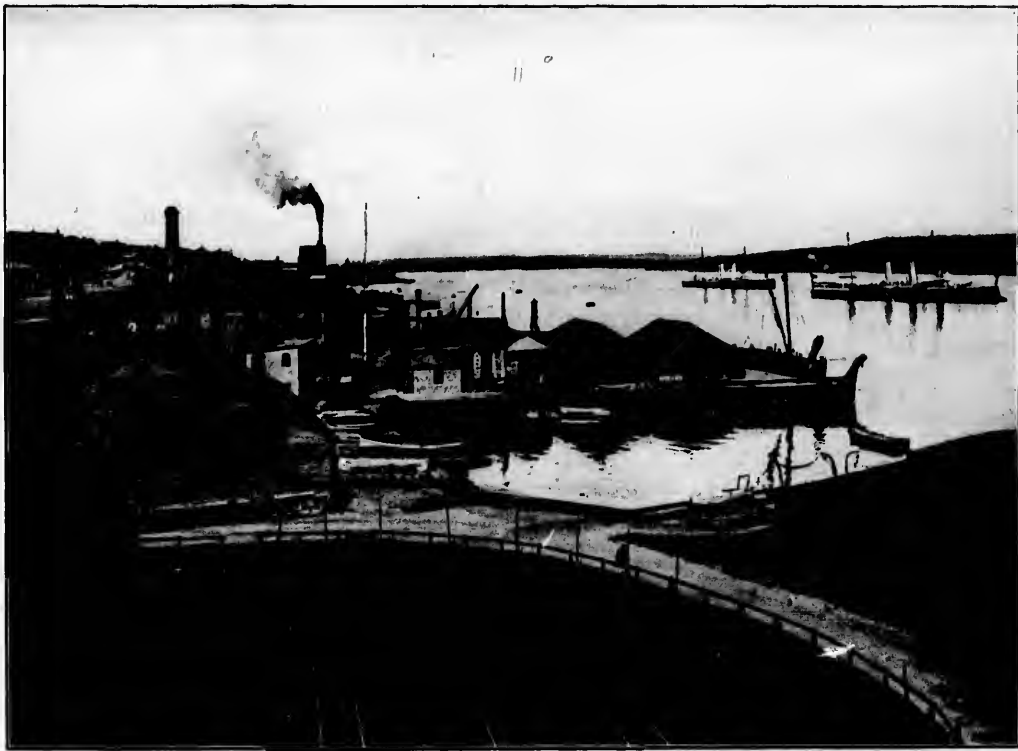
HALIFAX HARBOR
and the North Atlantic Squadron.
H.M.S. Diadem.
H.M.S. Tribune.
H.M.S. Indefatigable!

H.M.S. Psyche
H.M.S. Proserpine.

H.M.S. Niobe.



TROOPS DRILLING ON THE COMMON



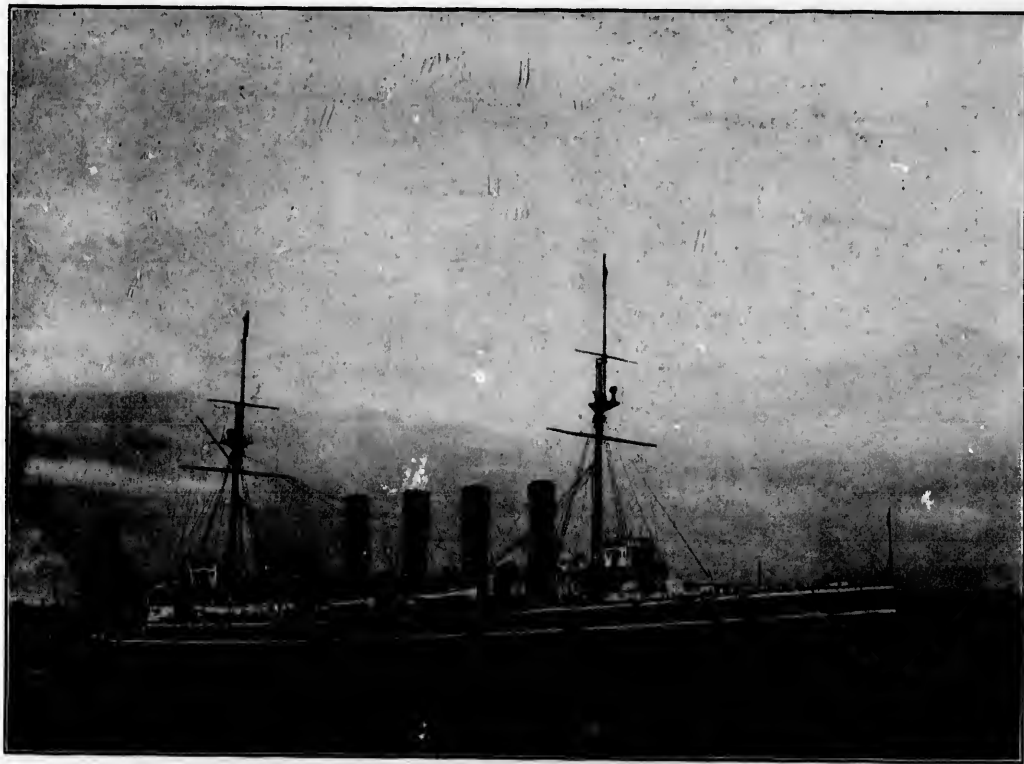
HIS MAJESTY'S DOCKYARD



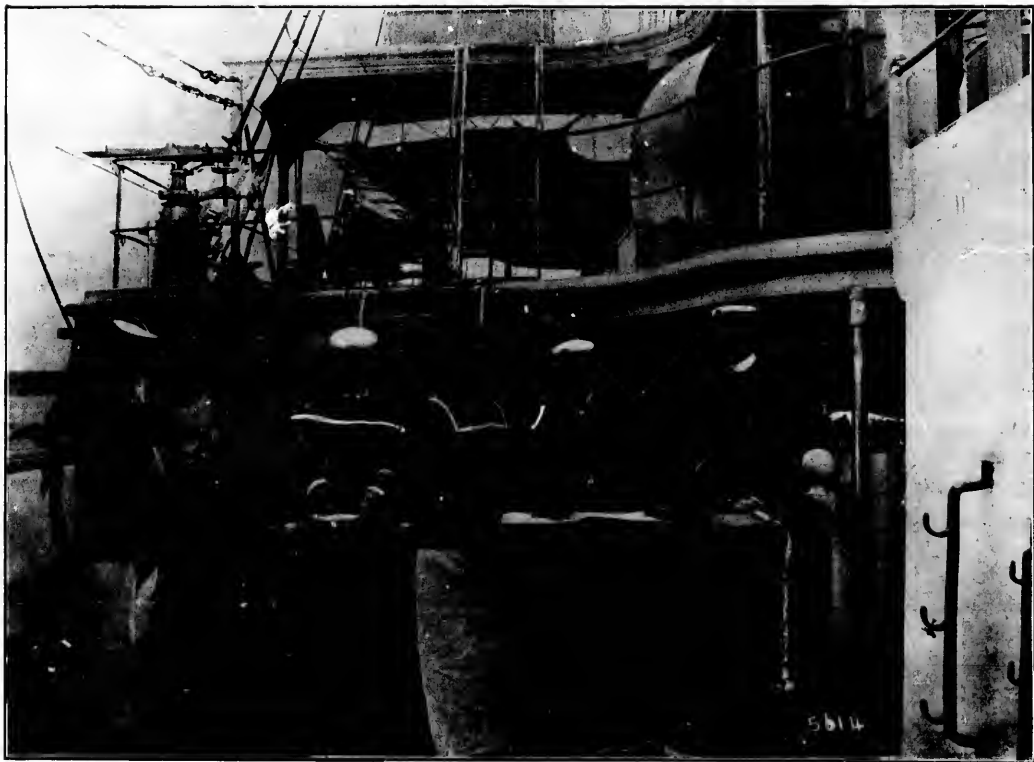
MILITARY PARADE ON THE COMMON



EMBARKATION OF TROOPS



THE FLAGSHIP ARIADNE



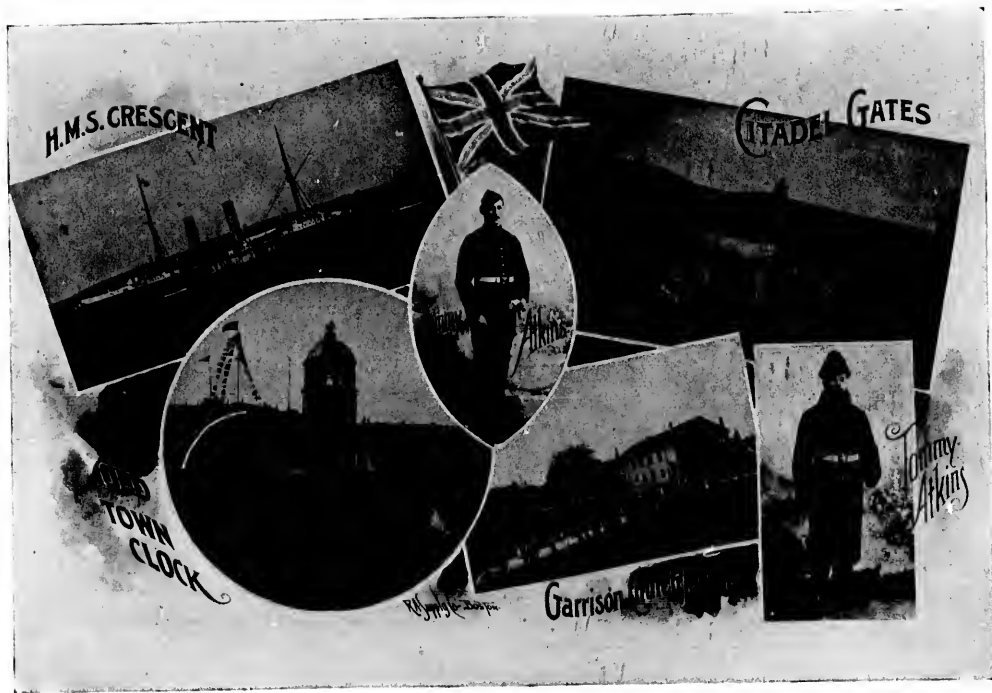
PAY DAY ON THE WAR SHIPS



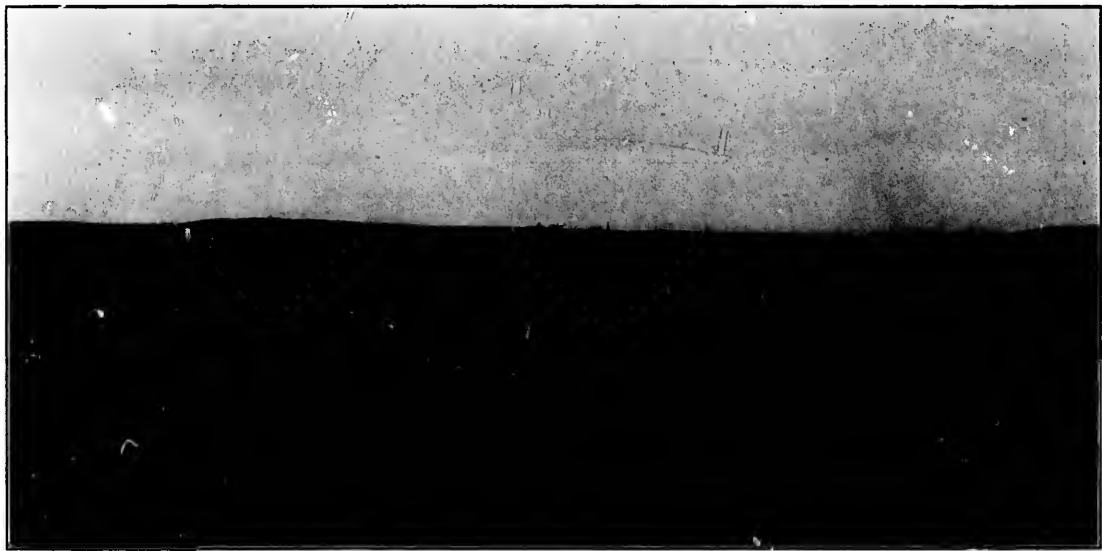
HALIFAX-CITY AND HARBOR-FROM DARTMOUTH



MELVILLE ISLAND, NORTHWEST ARM



GLIMPSES OF MILITARY LIFE IN HALIFAX

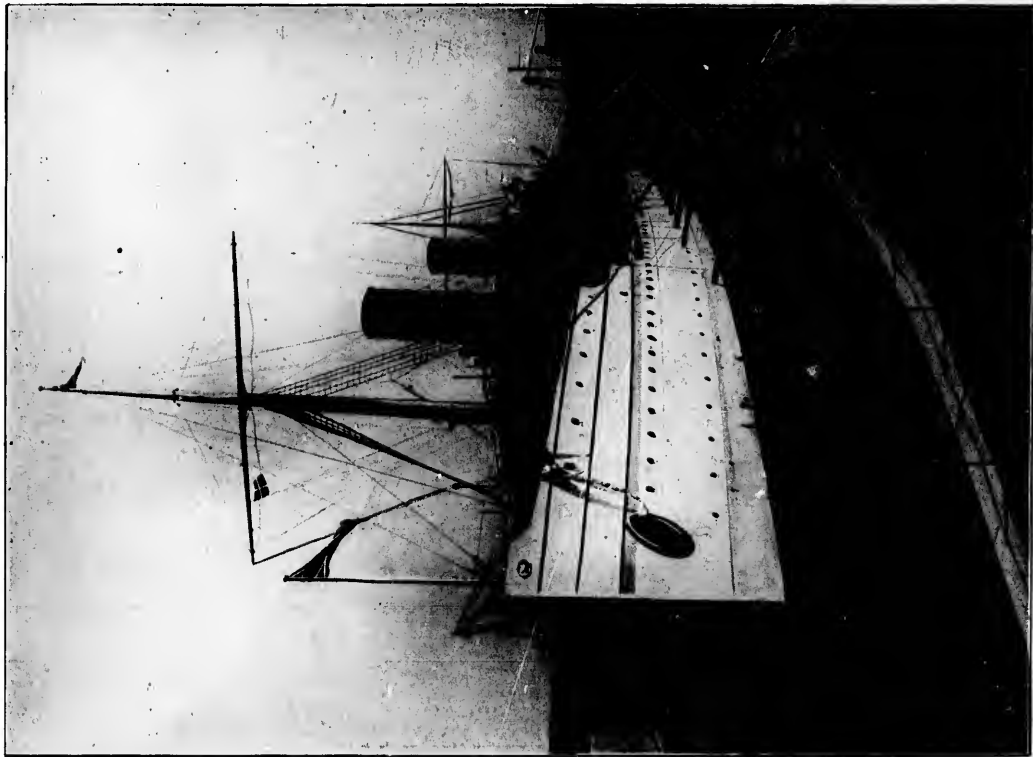


THE FLEET AT ANCHOR

Showing all the magnificent proportions of Halifax Harbor.



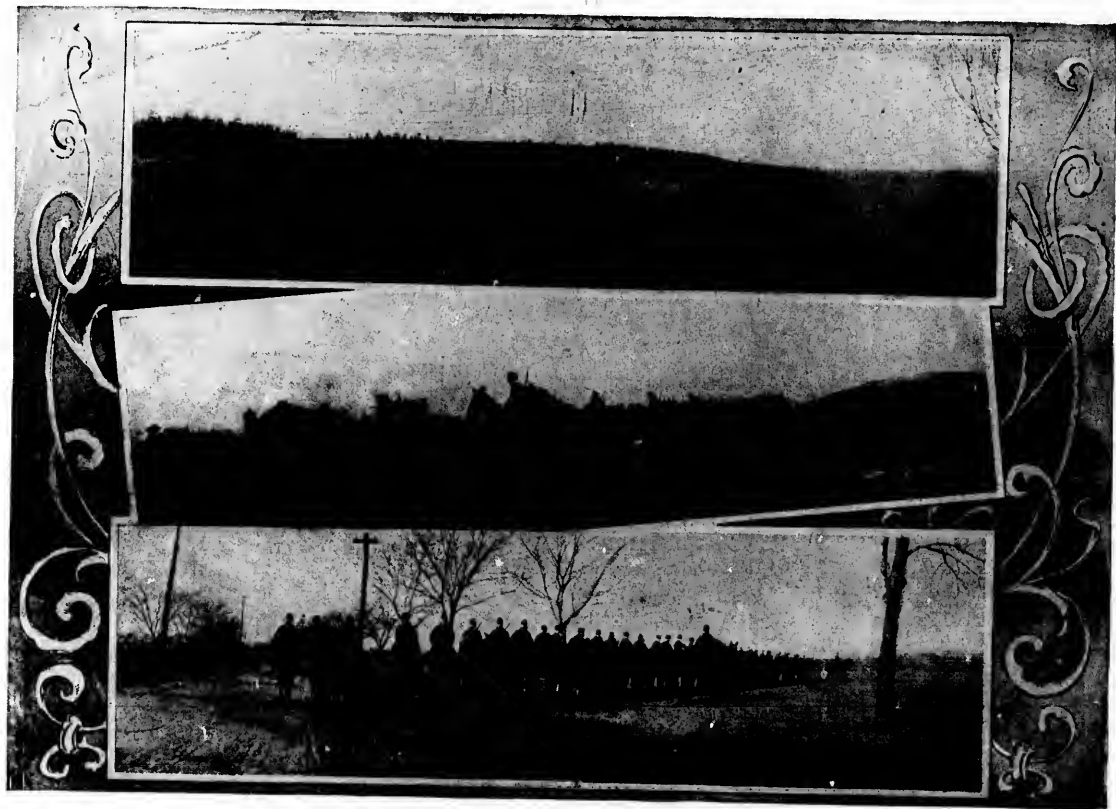
ADMIRALTY HOUSE AND GROUNDS



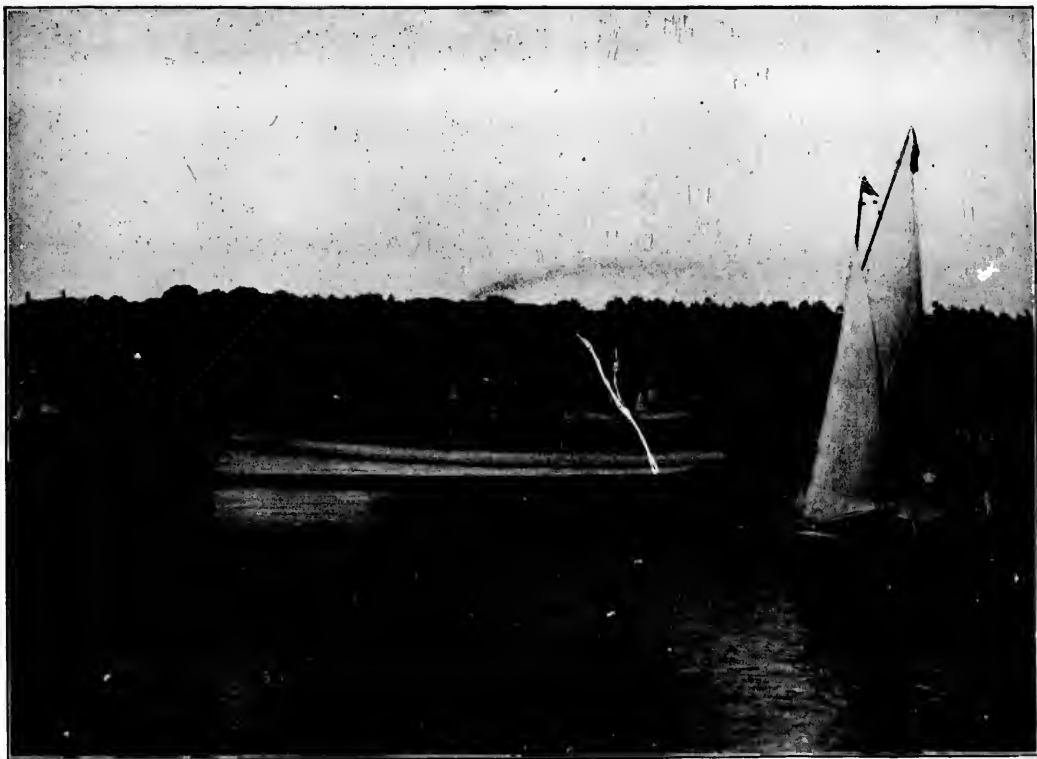
IN THE DRY DOCK AT HALIFAX



THE ARMORY OF THE HALIFAX MILITIA



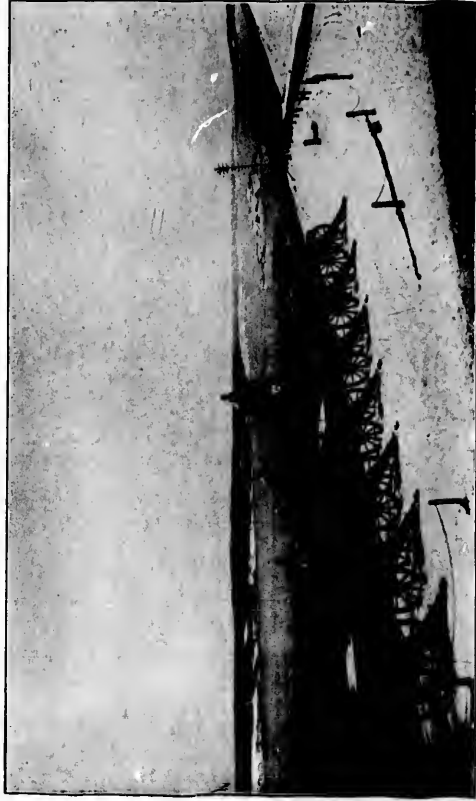
TROOPS DRILLING ON HALIFAX COMMON



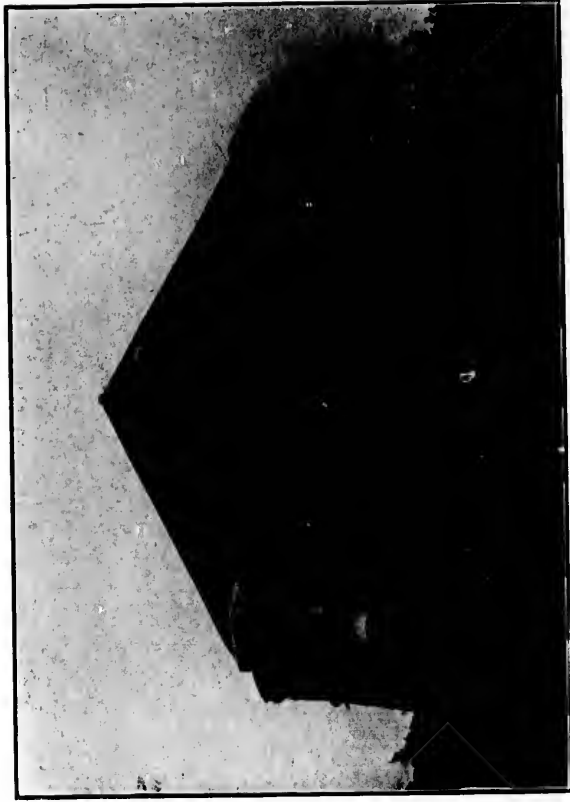
ON THE NORTH WEST ARM



VIEW FROM CITADEL AT HALIFAX, LOOKING OUT TO SEA



VIEW FROM CITADEL IN WINTER, SHOWING THE SALUTING BATTERY



THE MARTELLO TOWER



THE LIGHTHOUSE

THE LIGHTHOUSE



HERRING COVE, HALIFAX HARBOR



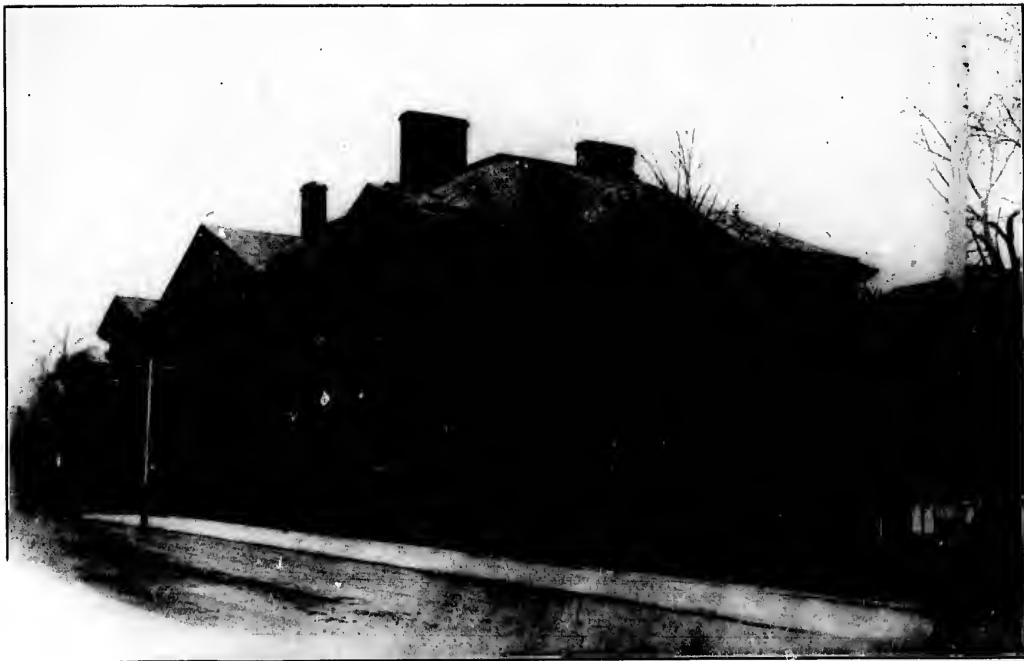
WALK IN THE GARDEN



HALIFAX, LOOKING NORTH FROM THE CITADEL, SHOWING DOCKYARD AND ANCHORAGE OF
NORTH ATLANTIC SQUADRON.



HOLLIS STREET



THE PROVINCIAL BUILDING



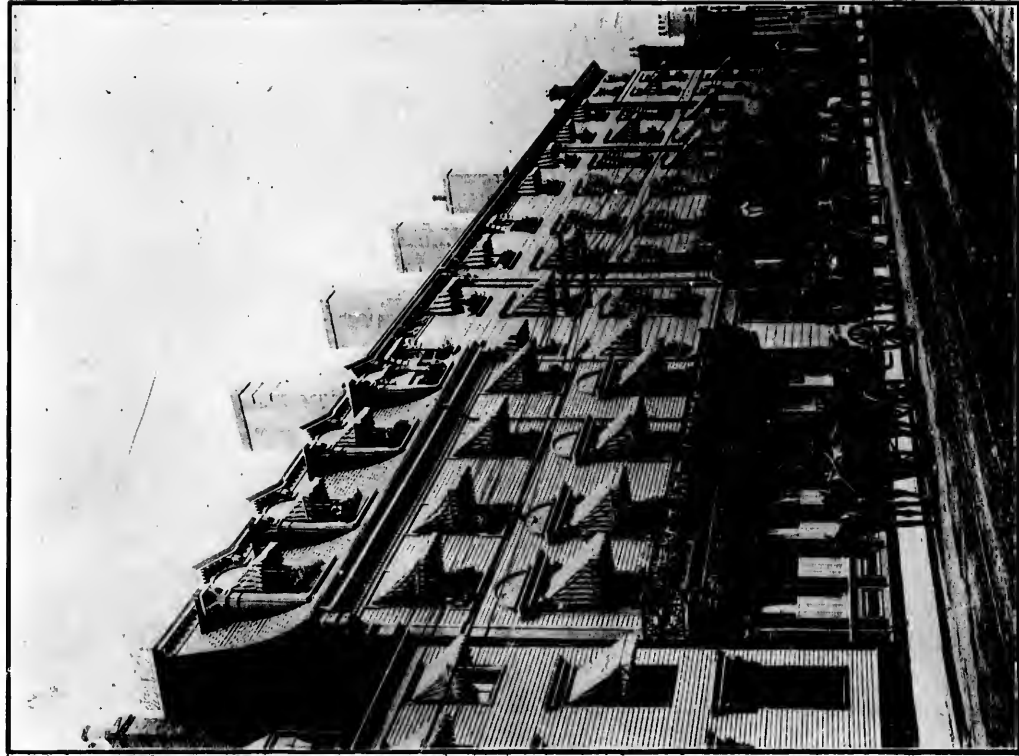
GOVERNMENT HOUSE



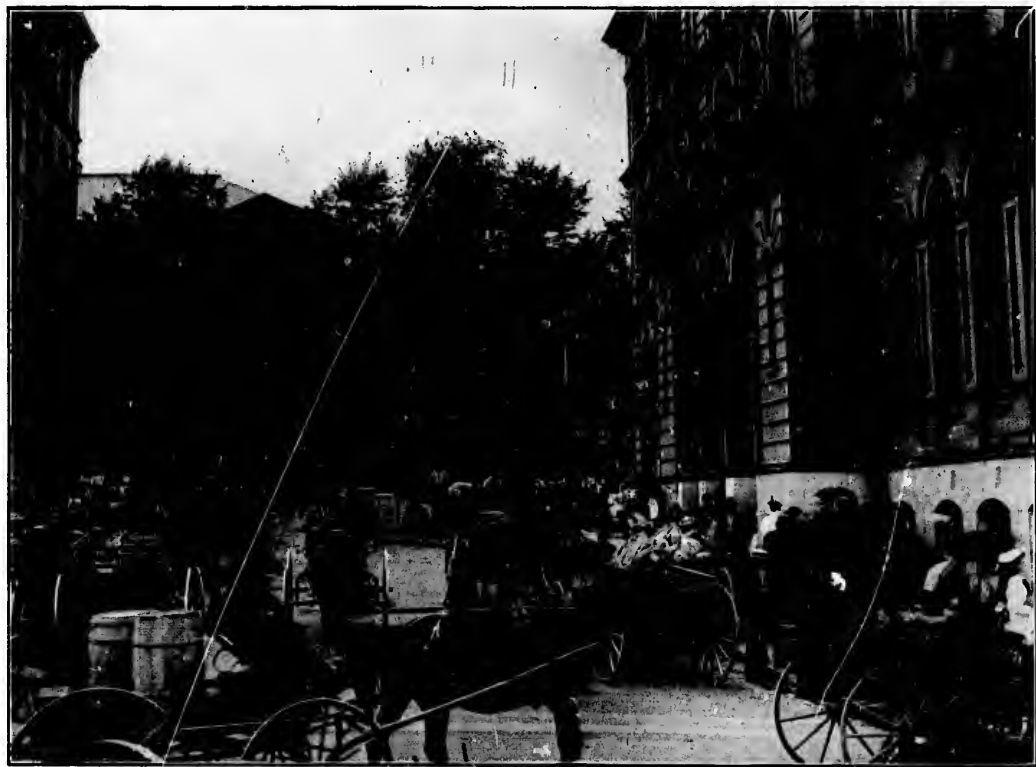
SCENE IN POINT PLEASANT PARK



THE NORTH WEST ARM ROWING CLUB



HALIFAX HOTEL



POST OFFICE AND PUBLIC MARKET



ONE OF THE MOST BEAUTIFUL PUBLIC GARDENS ON THE CONTINENT



AMID A LUXURIANCE OF FRAGRANCE AND FOLIAGE

WILSON, N. J.



A FLORAL TRIBUTE



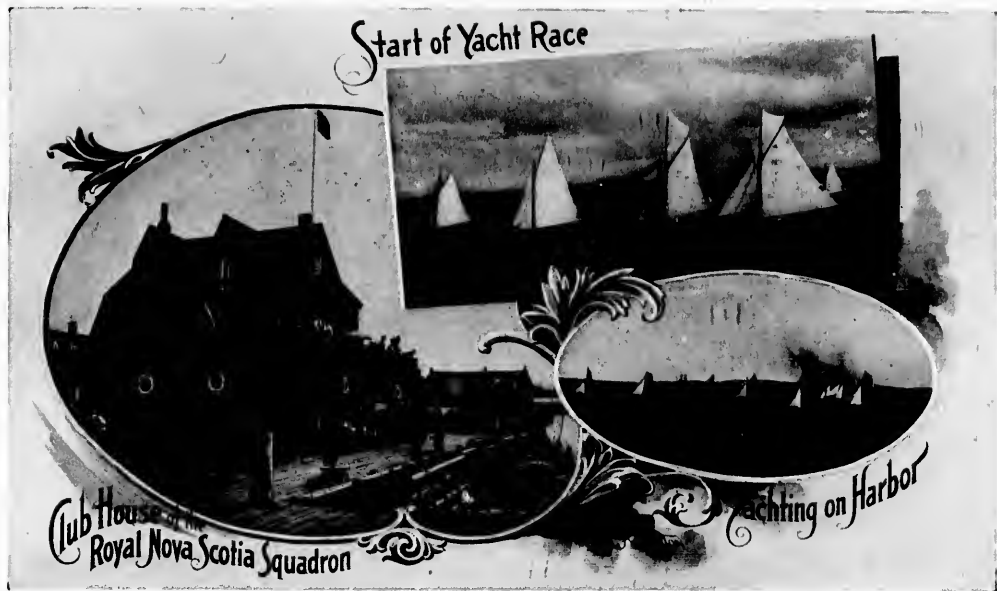
THE PRINCE'S LODGE



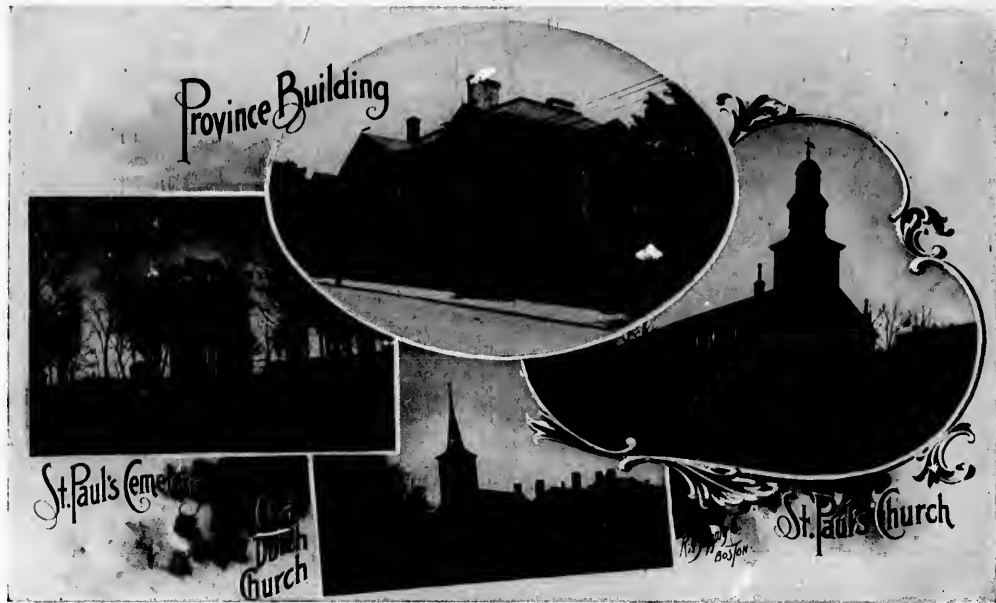
CITY HALL AND SQUARE



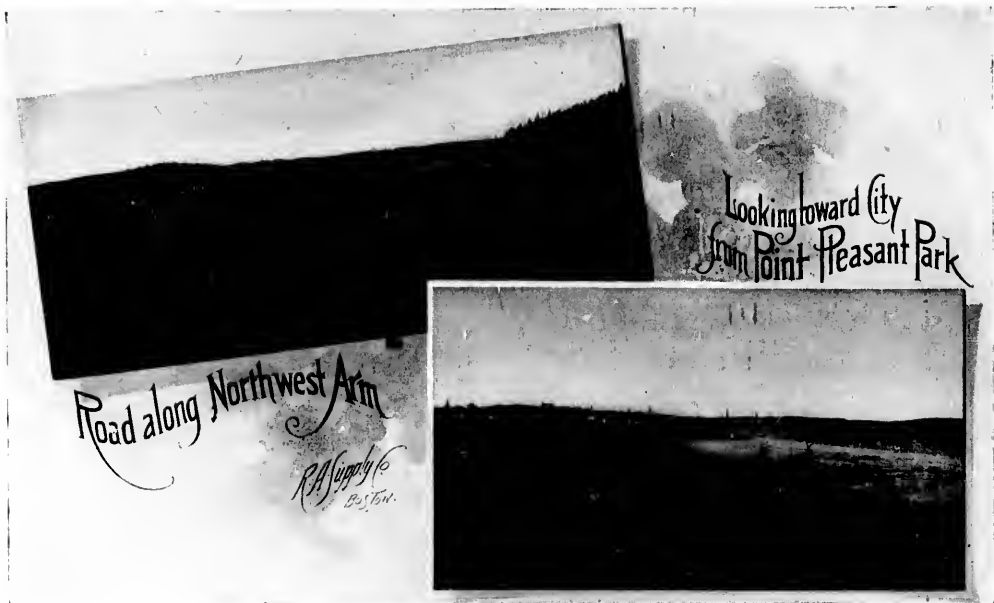
ST. MARY'S R.C. CATHEDRAL



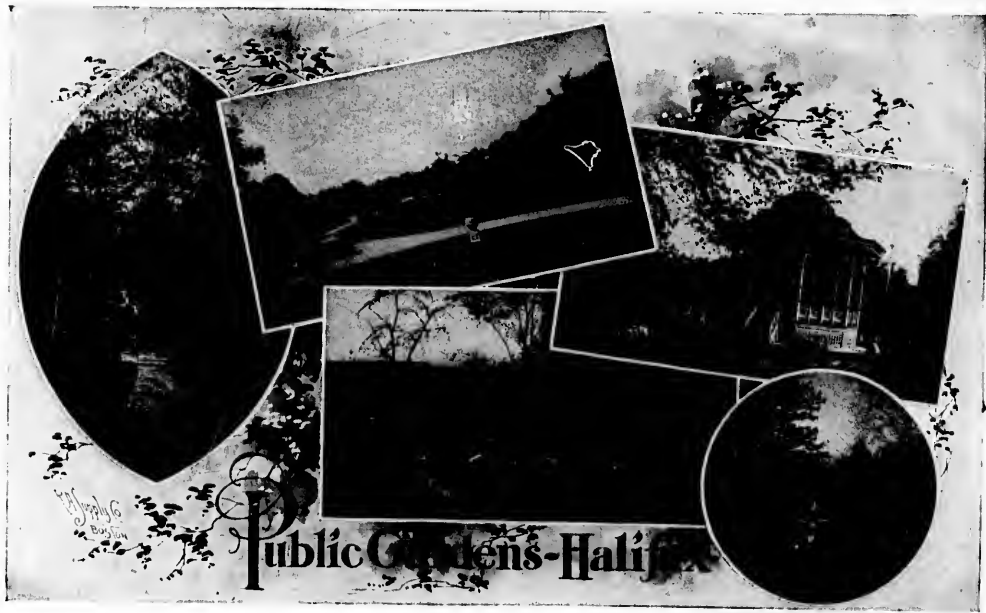
YACHTING ON HALIFAX HARBOR



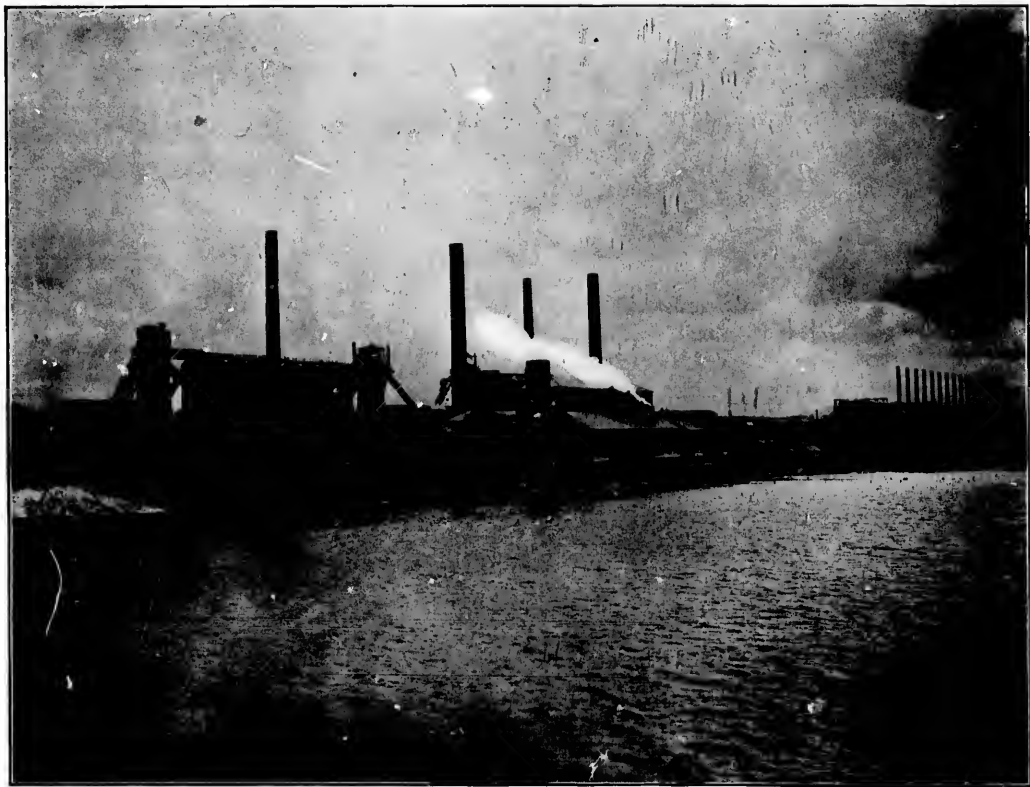
HISTORIC BUILDINGS IN HALIFAX



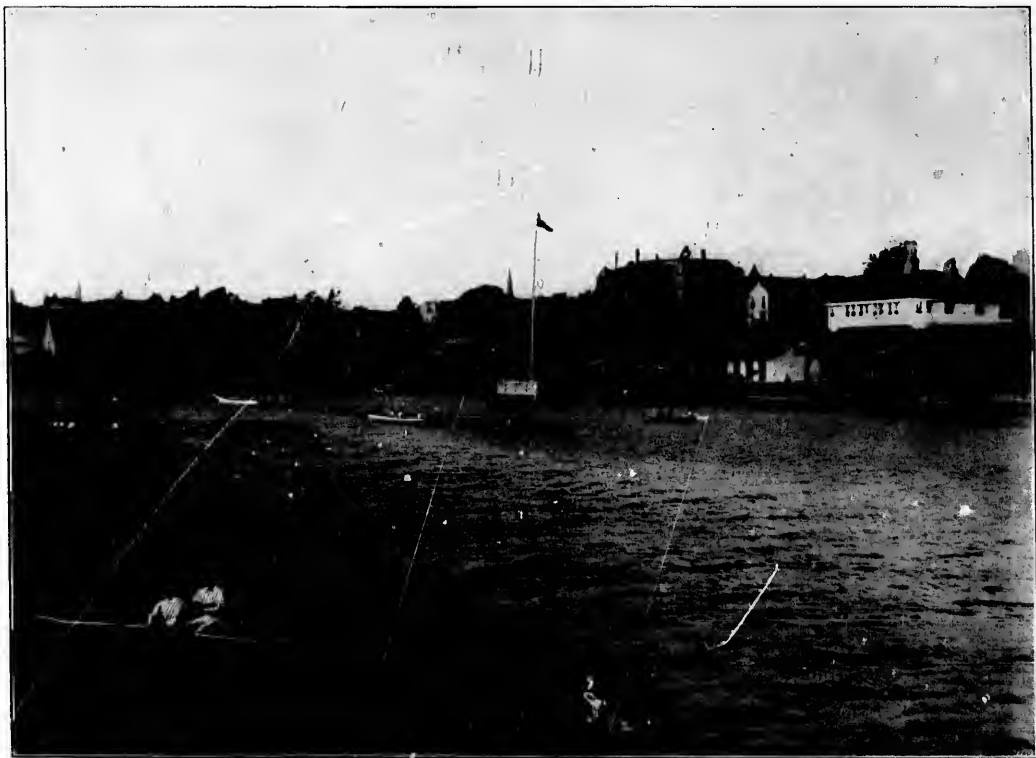
BREEZY SPOTS AT HALIFAX



Public Gardens - Halifax



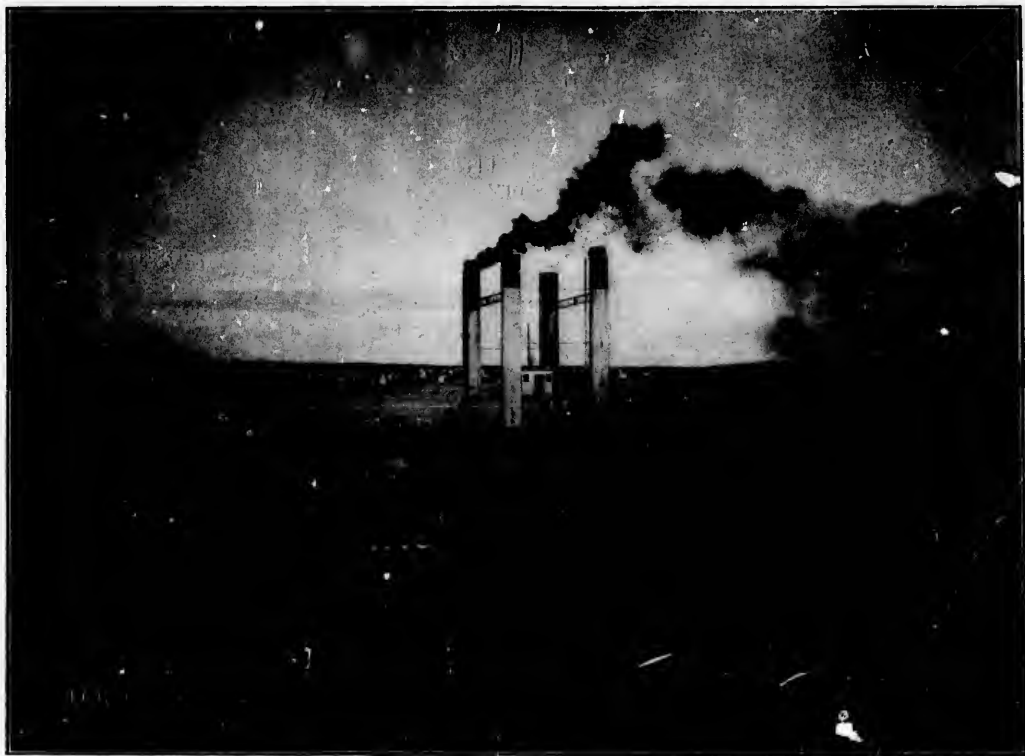
D. I. & S. CO.'S BLAST FURNACES, SYDNEY, C.B.



HARBOR FRONT, SYDNEY, CAPE BRETON.



THE MARCONI WIRELESS TELEGRAPH STATION, GLACE BAY, C.B.



INTERCOLONIAL RAILWAY CAR FERRY THAT CROSSES THE STRAITS OF CANSO

