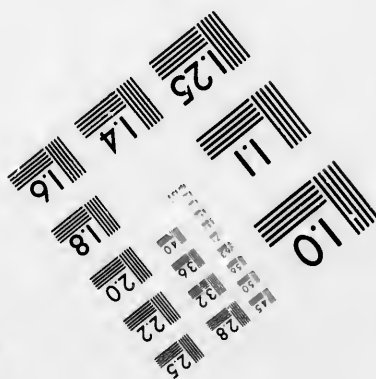
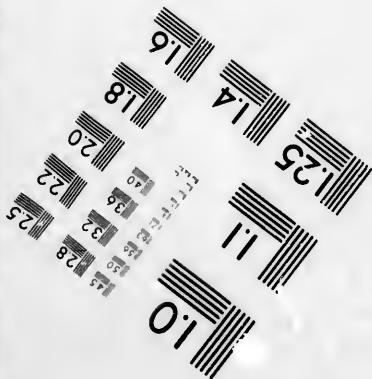
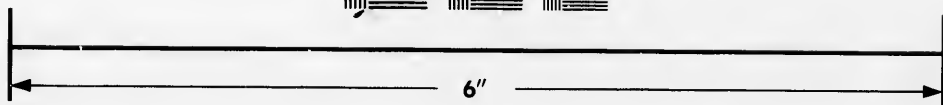
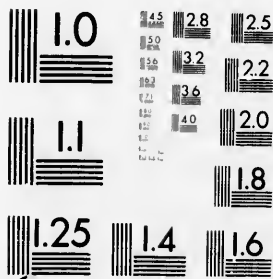


**IMAGE EVALUATION
TEST TARGET (MT-3)**



**Photographic
Sciences
Corporation**

23 WEST MAIN STREET
WEBSTER, N.Y. 14580
(716) 872-4503

15 28 25
16 32 22
18 20

**CIHM/ICMH
Microfiche
Series.**

**CIHM/ICMH
Collection de
microfiches.**

10



Canadian Institute for Historical Microreproductions

Institut canadien de microreproductions historiques

1980

Technical and Bibliographic Notes/Notes techniques et bibliographiques

The Institute has attempted to obtain the best original copy available for filming. Features of this copy which may be bibliographically unique, which may alter any of the images in the reproduction, or which may significantly change the usual method of filming, are checked below.

L'Institut a microfilmé le meilleur exemplaire qu'il lui a été possible de se procurer. Les détails de cet exemplaire qui sont peut-être uniques du point de vue bibliographique, qui peuvent modifier une image reproduite, ou qui peuvent exiger une modification dans la méthode normale de filmage sont indiqués ci-dessous.

- Coloured covers/
Couverture de couleur
- Covers damaged/
Couverture endommagée
- Covers restored and/or laminated/
Couverture restaurée et/ou pelliculée
- Cover title missing/
Le titre de couverture manque
- Coloured maps/
Cartes géographiques en couleur
- Coloured ink (i.e. other than blue or black)/
Encre de couleur (i.e. autre que bleue ou noire)
- Coloured plates and/or illustrations/
Planches et/ou illustrations en couleur
- Bound with other material/
Relié avec d'autres documents
- Tight binding may cause shadows or distortion
along interior margin/
La reliure serrée peut causer de l'ombre ou de la
distortion le long de la marge intérieure
- Blank leaves added during restoration may
appear within the text. Whenever possible, these
have been omitted from filming/
Il se peut que certaines pages blanches ajoutées
lors d'une restauration apparaissent dans le texte,
mais, lorsque cela était possible, ces pages n'ont
pas été filmées.
- Additional comments:/
Commentaires supplémentaires:

- Coloured pages/
Pages de couleur
- Pages damaged/
Pages endommagées
- Pages restored and/or laminated/
Pages restaurées et/ou pelliculées
- Pages discoloured, stained or foxed/
Pages décolorées, tachetées ou piquées
- Pages detached/
Pages détachées
- Showthrough/
Transparence
- Quality of print varies/
Qualité inégale de l'impression
- Includes supplementary material/
Comprend du matériel supplémentaire
- Only edition available/
Seule édition disponible
- Pages wholly or partially obscured by errata
slips, tissues, etc., have been refilmed to
ensure the best possible image/
Les pages totalement ou partiellement
obscurcies par un feuillet d'errata, une pelure,
etc., ont été filmées à nouveau de façon à
obtenir la meilleure image possible.

This item is filmed at the reduction ratio checked below/
Ce document est filmé au taux de réduction indiqué ci-dessous.

10X	14X	18X	22X	26X	30X
<input type="checkbox"/>	<input type="checkbox"/>	<input checked="" type="checkbox"/>	<input type="checkbox"/>	<input type="checkbox"/>	<input type="checkbox"/>
12X	16X	20X	24X	28X	32X

The copy filmed here has been reproduced thanks to the generosity of:

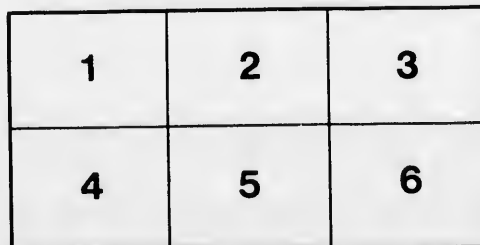
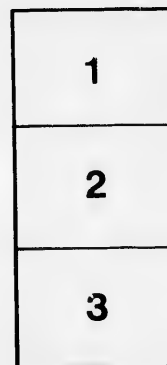
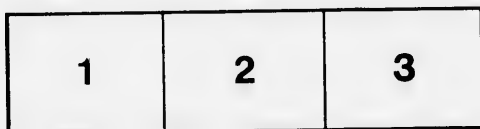
National Library of Canada

The images appearing here are the best quality possible considering the condition and legibility of the original copy and in keeping with the filming contract specifications.

Original copies in printed paper covers are filmed beginning with the front cover and ending on the last page with a printed or illustrated impression, or the back cover when appropriate. All other original copies are filmed beginning on the first page with a printed or illustrated impression, and ending on the last page with a printed or illustrated impression.

The last recorded frame on each microfiche shall contain the symbol \rightarrow (meaning "CONTINUED"), or the symbol ∇ (meaning "END"), whichever applies.

Maps, plates, charts, etc., may be filmed at different reduction ratios. Those too large to be entirely included in one exposure are filmed beginning in the upper left hand corner, left to right and top to bottom, as many frames as required. The following diagrams illustrate the method:



L'exemplaire filmé fut reproduit grâce à la générosité de:

Bibliothèque nationale du Canada

Les images suivantes ont été reproduites avec le plus grand soin, compte tenu de la condition et de la netteté de l'exemplaire filmé, et en conformité avec les conditions du contrat de filmage.

Les exemplaires originaux dont la couverture en papier est imprimée sont filmés en commençant par le premier plat et en terminant soit par la dernière page qui comporte une empreinte d'impression ou d'illustration, soit par le second plat, selon le cas. Tous les autres exemplaires originaux sont filmés en commençant par la première page qui comporte une empreinte d'impression ou d'illustration et en terminant par la dernière page qui comporte une telle empreinte.

Un des symboles suivants apparaîtra sur la dernière image de chaque microfiche, selon le cas: le symbole \rightarrow signifie "A SUIVRE", le symbole ∇ signifie "FIN".

Les cartes, planches, tableaux, etc., peuvent être filmés à des taux de réduction différents. Lorsque le document est trop grand pour être reproduit en un seul cliché, il est filmé à partir de l'angle supérieur gauche, de gauche à droite, et de haut en bas, en prenant le nombre d'images nécessaire. Les diagrammes suivants illustrent la méthode.

errata
to

pelure,
on à



Can.

Pam.

The Huntingdon
Peat Co.

7

THE
HUNTINGDON PEAT COMPANY,
(LIMITED.)

HEAD OFFICE, MONTREAL.

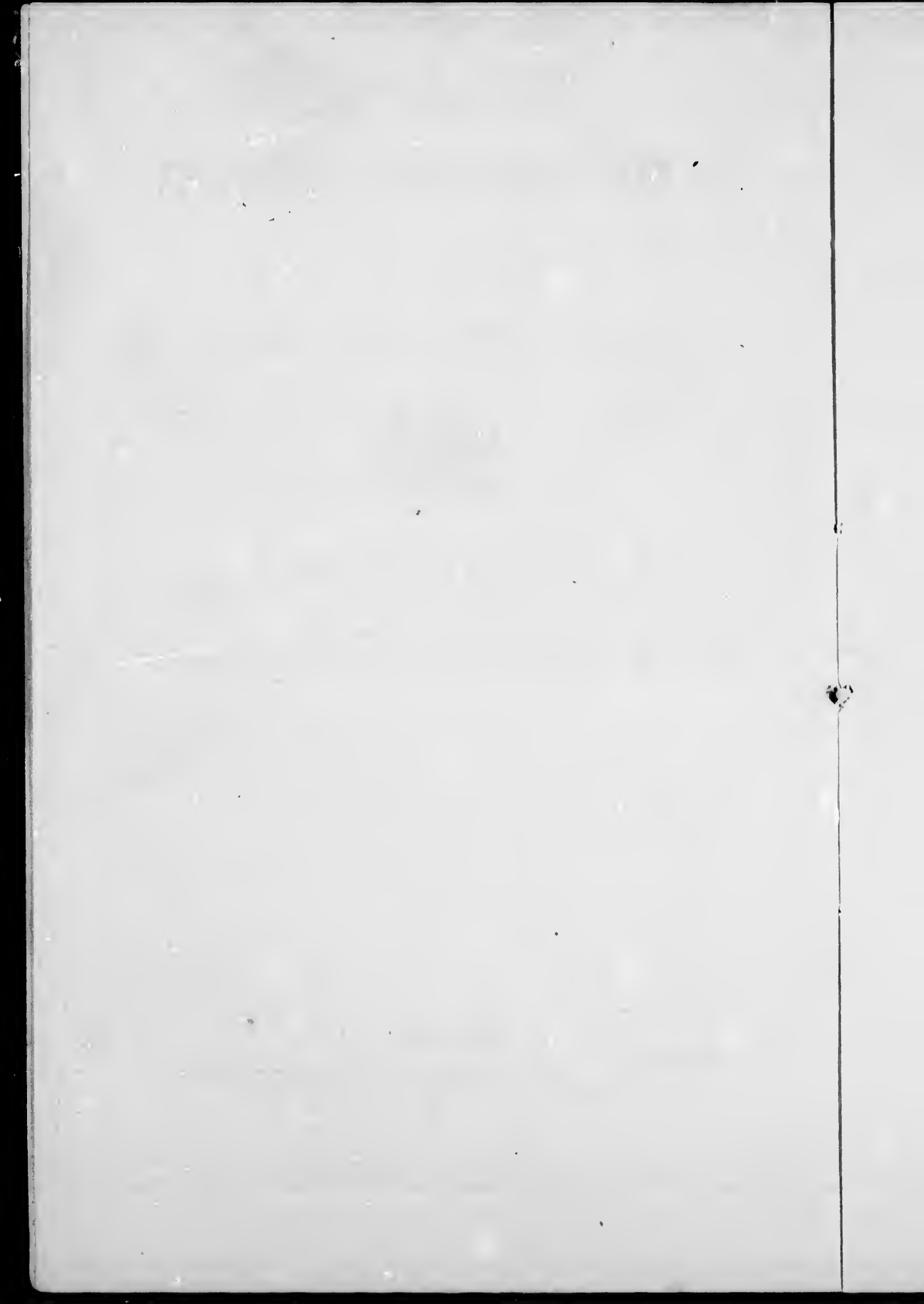


(To be incorporated under the Canada Statute.)

THE ONLY TRUE METHOD OF CURING AND DRYING PEAT

Montreal :

PRINTED BY JOHN LOVELL, ST. NICHOLAS STREET.
1871.



THE HUNTINGDON PEAT COMPANY,

(LIMITED.)

HEAD OFFICE, MONTREAL.



(To be incorporated under the Canada Statute.)

Peat, as an article of fuel in this country, comparatively speaking, very little is really known, though large beds are continually being discovered and evidently must sooner or later take the place of wood and coal, the former of which is fast becoming scarce—Peat properly manufactured is preferred to any other fuel for steam purposes, and highly prized by the forges generally.

The Huntingdon Peat Company claim superior

advantages in the manufacturing of the article by adopting the invention of Mr. Robert Arthur Griffin, which has been highly recommended by competent engineers, and as to his method of curing and drying the same after receiving it from the machinery in its pulp state an inspection of the various tests is sufficient to warrant the Company in stating that they stand second to none in the Dominion of Canada and the United States.

The following are some of the results to be obtained in making peat upon the improved method, by the "Griffin Patent."

- 1st. The present mode of drying peat by partial evaporation injures the quality of the peat and takes away more than $\frac{1}{4}$ of its specific gravity, whereas by drainage the whole of the weight is obtained and the substance becomes dense and solid.
- 2nd. The peat can be prepared of the same size as the cordwood now used in the Locomotive Engines, and has that weight in itself that secures its consumption in the furnace, instead of being carried off half consumed to the chimney.
- 3rd. The expense of curing the peat can be considerably lessened by the proposed plan.

- 4th. The peat when cured on the improved plan is free entirely from dust, and so hard that it can be readily sawn like wood, and can be handled with as little care as coal.
- 5th. The fuel obtained by this process is worth in the market twenty-five per cent. more to the consumer than the present value, and will be to the manufacturers the same saving both as to quality and weight.

The results of numerous experiments, practical as well as scientific, go to show that peat in its rudely prepared state, goes far towards answering these requirements, and when solidified, it is for all purposes superior.

The number and variety of machines and devices which have been invented, patented, or attempted to be used for these purposes are astonishing; and although all have agreed that such results were practicable, few have actually arrived at anything like a satisfactory method of preparing it; and none, until recently, so far as we are aware, have arrived at that complete success which is essential to the profitable and universal introduction of an article of this character.

A process has, however, recently been discovered by which peat may be converted into a solid dry fuel

in good shape and at moderate cost, and has been demonstrated to be beyond a question a success.

By this process the Company will be enabled to turn out at least one hundred tons of dry peat per day, and ready for shipment in three weeks.

The enormous expense of all machinery hitherto used in utilizing peat has been the chief or sole cause of the article not being produced at sufficient low cost to compete favorably with wood and coal.

This Company is formed for the purpose of manufacturing peat in the township of Godmanchester in the county of Huntingdon, distance from Montreal 47 miles, being four miles from Port Lewis, on the St. Lawrence, affording every facility for shipping purposes.

The peat bed is of a superior quality, being equal to any as yet discovered, and comprises 500 acres or thereabout, averaging from 10 to 18 feet in depth of pure vegetable matter, capable of yielding 3000 tons of dry peat to the acre, and can be manufactured at a cost of one dollar per ton, allowing ample for contingencies.

The inventor of the machinery for both purposes is secured by letters patent for the United States and the Dominion of Canada.

The capital stock of the Company has been fixed at

\$50,000 in 5000 shares of ten dollars each, and they purpose disposing of sufficient number of shares in order to have the works in full operation early in the coming spring.

The inventor and originator of this Company gives the use within the township of Godmanchester of his patent right to the Huntingdon Peat Company for the Royalty of thirty cents per ton, of 2000 pounds each for the first year, being lower than any other shall be allowed to use the same—and for the following years the Royalty to be 50 cents per ton, and the said inventor to have two hundred and fifty paid up shares in the said Huntingdon Peat Company.

