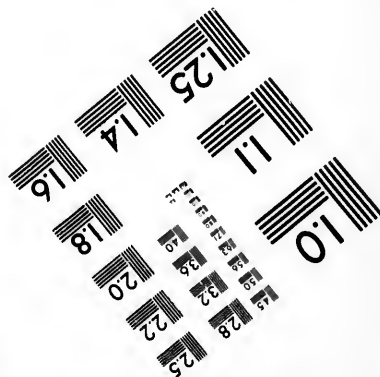
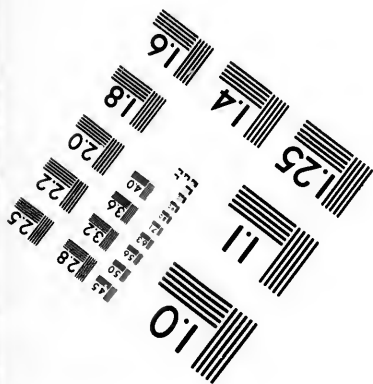
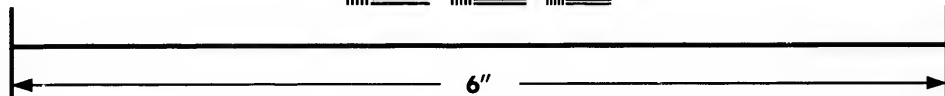
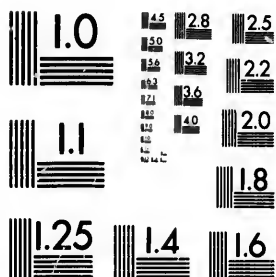


**IMAGE EVALUATION
TEST TARGET (MT-3)**



**Photographic
Sciences
Corporation**

23 WEST MAIN STREET
WEBSTER, N. Y. 14530
(716) 872-4503

28
25
22
20

**CIHM/ICMH
Microfiche
Series.**

**CIHM/ICMH
Collection de
microfiches.**



Canadian Institute for Historical Microreproductions / Institut canadien de microreproductions historiques

10

© 1985

Technical and Bibliographic Notes/Notes techniques et bibliographiques

The Institute has attempted to obtain the best original copy available for filming. Features of this copy which may be bibliographically unique, which may alter any of the images in the reproduction, or which may significantly change the usual method of filming, are checked below.

L'Institut a microfilmé le meilleur exemplaire qu'il lui a été possible de se procurer. Les détails de cet exemplaire qui sont peut-être uniques du point de vue bibliographique, qui peuvent modifier une image reproduite, ou qui peuvent exiger une modification dans la méthode normale de filmage sont indiqués ci-dessous.

- Coloured covers/
Couverture de couleur
- Covers damaged/
Couverture endommagée
- Covers restored and/or laminated/
Couverture restaurée et/ou pelliculée
- Cover title missing/
Le titre de couverture manque
- Coloured maps/
Cartes géographiques en couleur
- Coloured ink (i.e. other than blue or black)/
Encre de couleur (i.e. autre que bleue ou noire)
- Coloured plates and/or illustrations/
Planches et/ou illustrations en couleur
- Bound with other material/
Relié avec d'autres documents
- Tight binding may cause shadows or distortion
along interior margin/
La reliure serrée peut causer de l'ombre ou de la
distorsion le long de la marge intérieure
- Blank leaves added during restoration may
appear within the text. Whenever possible, these
have been omitted from filming/
Il se peut que certaines pages blanches ajoutées
lors d'une restauration apparaissent dans le texte,
mais, lorsque cela était possible, ces pages n'ont
pas été filmées.
- Additional comments:/
Commentaires supplémentaires:

- Coloured pages/
Pages de couleur
- Pages damaged/
Pages endommagées
- Pages restored and/or laminated/
Pages restaurées et/ou pelliculées
- Pages discoloured, stained or foxed/
Pages décolorées, tachetées ou piquées
- Pages detached/
Pages détachées
- Showthrough/
Transparence
- Quality of print varies/
Qualité inégale de l'impression
- Includes supplementary material/
Comprend du matériel supplémentaire
- Only edition available/
Seule édition disponible
- Pages wholly or partially obscured by errata
slips, tissues, etc., have been refilmed to
ensure the best possible image/
Les pages totalement ou partiellement
obscurcies par un feuillet d'errata, une pelure,
etc., ont été filmées à nouveau de façon à
obtenir la meilleure image possible.

This item is filmed at the reduction ratio checked below/
Ce document est filmé au taux de réduction indiqué ci-dessous.

10X	12X	14X	16X	18X	20X	22X	24X	26X	28X	30X	32X
<input type="checkbox"/>	<input type="checkbox"/>	<input type="checkbox"/>	<input type="checkbox"/>	<input type="checkbox"/>	<input type="checkbox"/>	<input checked="" type="checkbox"/>	<input type="checkbox"/>	<input type="checkbox"/>	<input type="checkbox"/>	<input type="checkbox"/>	<input type="checkbox"/>

The copy filmed here has been reproduced thanks to the generosity of:

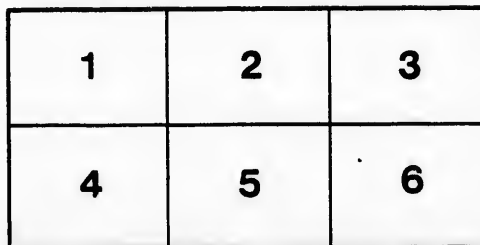
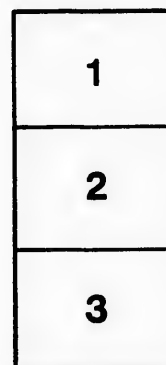
Medical Library
McGill University
Montreal

The images appearing here are the best quality possible considering the condition and legibility of the original copy and in keeping with the filming contract specifications.

Original copies in printed paper covers are filmed beginning with the front cover and ending on the last page with a printed or illustrated impression, or the back cover when appropriate. All other original copies are filmed beginning on the first page with a printed or illustrated impression, and ending on the last page with a printed or illustrated impression.

The last recorded frame on each microfiche shall contain the symbol \rightarrow (meaning "CONTINUED"), or the symbol ∇ (meaning "END"), whichever applies.

Maps, plates, charts, etc., may be filmed at different reduction ratios. Those too large to be entirely included in one exposure are filmed beginning in the upper left hand corner, left to right and top to bottom, as many frames as required. The following diagrams illustrate the method:



L'exemplaire filmé fut reproduit grâce à la générosité de:

Medical Library
McGill University
Montreal

Les images suivantes ont été reproduites avec le plus grand soin, compte tenu de la condition et de la netteté de l'exemplaire filmé, et en conformité avec les conditions du contrat de filmage.

Les exemplaires originaux dont la couverture en papier est imprimée sont filmés en commençant par le premier plat et en terminant soit par la dernière page qui comporte une empreinte d'impression ou d'illustration, soit par le second plat, selon le cas. Tous les autres exemplaires originaux sont filmés en commençant par la première page qui comporte une empreinte d'impression ou d'illustration et en terminant par la dernière page qui comporte une telle empreinte.

Un des symboles suivants apparaîtra sur la dernière image de chaque microfiche, selon le cas: le symbole \rightarrow signifie "A SUIVRE", le symbole ∇ signifie "FIN".

Les cartes, planches, tableaux, etc., peuvent être filmés à des taux de réduction différents. Lorsque le document est trop grand pour être reproduit en un seul cliché, il est filmé à partir de l'angle supérieur gauche, de gauche à droite, et de haut en bas, en prenant le nombre d'images nécessaire. Les diagrammes suivants illustrent la méthode.

MONTREAL, *March 21st, 1878.*

SIR,

Having just learned that Dr. Drake intends resigning, in May next, his position as Attending Physician to the Montreal General Hospital, I take this method of informing you, as early as possible, that I intend to be a candidate for that position, should it thus become vacant, and of soliciting the favour of your support and influence in my candidature. As you may desire to know some of my qualifications for the office, permit me to mention that I hold the Bachelor and Master of Arts Degrees, and that of Doctor of Medicine, of Queen's University, Kingston, together with the degree of M.D., C.M. of McGill University. The professional experience, necessary for a Hospital Physician, has been derived from my connection with several such institutions in Canada and the United States, and from ten years of private practice in this city since I resigned the post of Apothecary, or Assistant House Surgeon, in the Montreal General Hospital. The record of my residence in this institution is given in the accompanying extract from the minutes of the Committee of Management. To this may be added the result of a number of years of regular attendance, as Physician to the Protestant Infants' Home, Montreal Dispensary, and other Societies requiring medical and surgical services. During these years I have endeavoured to show my interest in the progress of the profession, by occasional contributions to the medical and scientific periodicals. It would perhaps be superfluous to append any testimonials from the eminent practitioners of this city, who have been my esteemed teachers, but as evidence of the nature of my relationship with those with whom I have been associated before coming to Montreal (13 years ago), I append the following three letters, that were received some time ago.

Yours respectfully,

JOHN BELL, A.M., M.D.

Montreal General Hospital.

MONTREAL, 18 Jany, 1868.

EXTRACT OF MINUTES.

MONTREAL GENERAL HOSPITAL,

18th Jany, 1868.

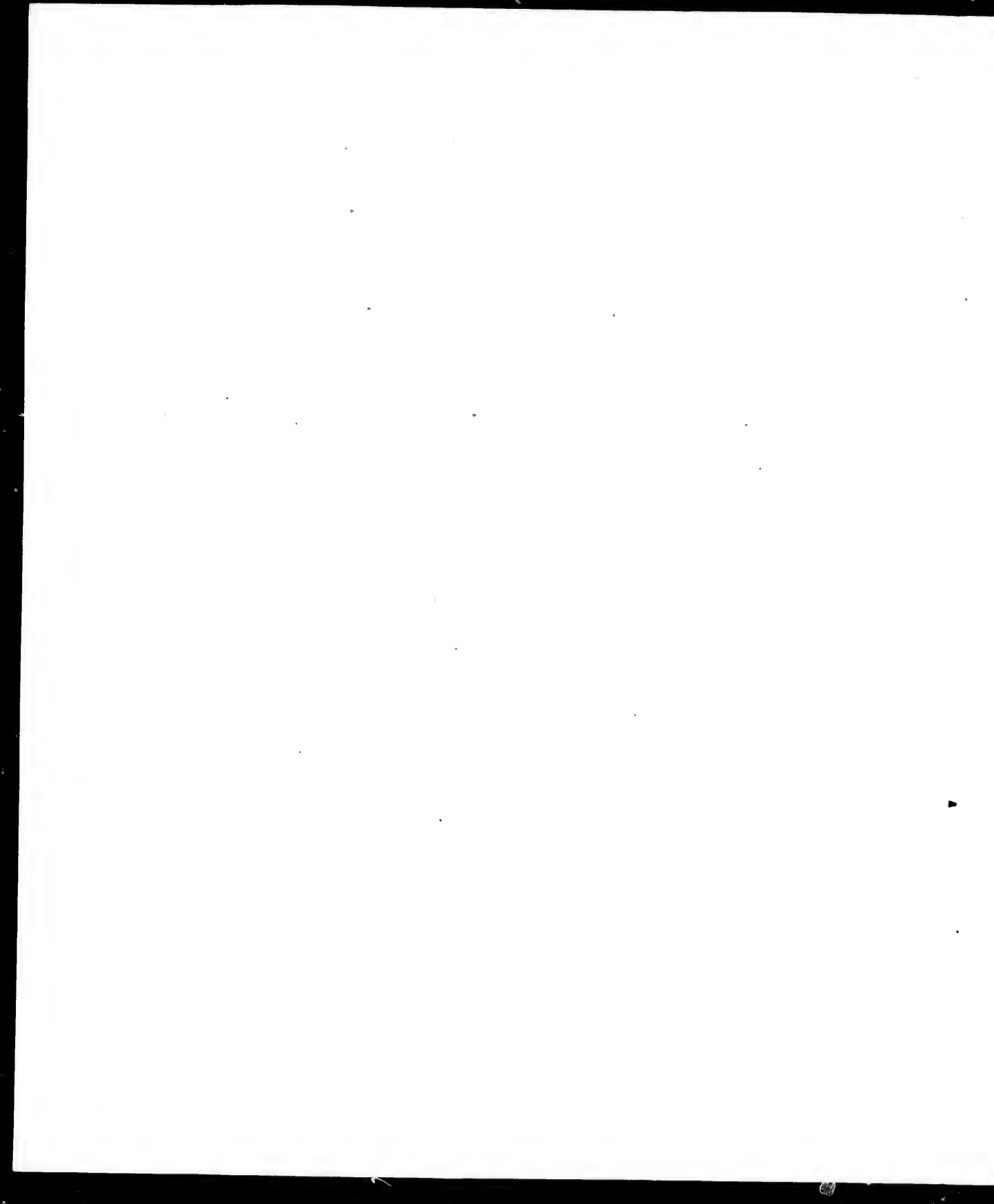
A letter was received from Dr. Bell resigning his post as Apothecary in the Hospital, a post which he had held for more than three (3) years.

It was resolved to accept the resignation, with regret, of Dr. Bell, and to place on record the Committee's sense of the ability, fidelity and assiduity with which Dr. Bell attended to his duties while resident in the Hospital.

To DR. J. BELL.

(Signed) EDWD. RUSSELL,
House Steward, M. G. Hospital.

[PLEASE TURN OVER.]



From DONALD MACLEAN, M.D., Ed., *Professor of Surgery, University of Michigan.*

ANN ARBOR, Jan. 29th, 1875.

Having known Dr. John Bell intimately during the whole of his professional career, I have the utmost confidence and much pleasure in recommending him for the appointment of Hospital Physician. His fine abilities, high moral character, and the unusually good opportunities he has enjoyed for acquiring professional knowledge, skill and experience, peculiarly fit him for the position.

(Signed) DONALD MACLEAN, M.D., ED.

From JOHN R. DICKSON, M.D., M. R. C. P. L., M. R. C. S. E., and F. R. C. S. ED., *President Royal College Physicians and Surgeons, Kingston, and formerly Dean of the Med. Faculty, Queen's College.*

Having been informed that Dr. John Bell of Montreal is an applicant for the appointment of Attending (Junior) Physician to the Montreal General Hospital, I have much pleasure in bearing testimony to his ability to discharge the duties of that important office.

Dr. Bell was a most diligent, painstaking student, and his opportunities of acquiring a practical knowledge of his profession, both during his student life and since he obtained his degree, were very great. I therefore think he is well qualified to discharge the duties of such an office.

(Signed) JOHN R. DICKSON,
F. R. C. S. E.

KINGSTON, 23rd Nov., 1874.

From JOHN A. OCTERLONY, M.D., *Professor Materia Medica and Therapeutics, and Clin. Medicine in the Louisville Med. Coll.; Physician to the Louisville City Hospital; Late Physician and Pathologist to the Brown U. S. A. Gen. Hosp., and to the U. S. A. Gen. Hosp., 'Ohio.'*

LOUISVILLE, KY, Nov. 30th, 1874.

I am informed that Dr. John Bell of Montreal, is at present a candidate for the position of (Junior) Attending Physician to the Montreal General Hospital. It is with great pleasure I embrace this opportunity to express my appreciation of Dr. Bell, as a gentleman, and of his professional attainments. In simple justice, I ought also to state the numerous and extensive opportunities enjoyed by Dr. Bell while serving under me in the United States Army Hospitals in the vicinity of Louisville, Ky, during the late civil war, and the industry, ability and effectiveness displayed by him in the performance of his duties. Dr. Bell availed himself in the most creditable and successful manner of the Clinical and Pathological field open to him at this time. As Physician and Pathologist and as his instructor I came in close and constant contact with him, and while serving together in the Brown U. S. Gen. Hospital, and in the U. S. Gen. Hosp., "Ohio," he gave me the most constant and perfect satisfaction. In these Hospitals he had extensive opportunities of assisting in numerous and varied capital operations, and to perform many operations for himself. He saw daily large numbers of varied and complex medical diseases, and was called upon to study the cases closely and critically, and received daily, clinical instruction in physical diagnosis. His duties also demanded the daily performance of post mortem examinations (some days 5 or 6), with the writing of the records, and careful microscopical examinations of the viscera. I believe but few young men have enjoyed such opportunities to fit themselves for hospital and private practice, and but few have so conscientiously availed themselves of these opportunities as Dr. Bell did when with me.

(Signed) JOHN A. OCTERLONY, M.D.

