

**PAGES**

**MISSING**

INDEX TO ADVERTISEMENTS

In the "Canadian Architect and Builder."

Architectural Sculptors..

Modellers  
Wood Carvers  
etc...

Dealers in  
Maw & Co.'s  
and Minton &  
Co.'s Artistic and  
Plain Tiles for Cabinet  
Hearths, Floors, Etc

**Holbrook & Mollington**

No. 206 King St. West  
**TORONTO**  
TELEPHONE MAIN 1240

Established 1880

GREATEST DURABILITY  
SMALLEST COST  
SUPERIOR EFFECT

**MUIRHEAD'S METAL WHITE**

This article, as its name implies, is a White Metallic Paint, ground in Pure Linseed Oil.

IT DOES NOT injure the Linseed Oil as all grades of White Lead do.  
IT WILL NOT chalk nor flake off.  
IT WILL NOT blacken in an impure atmosphere.  
IT HAS greater spreading capacity than White Lead.  
IT IS non-poisonous, being a perfect sanitary paint.  
IT IS more easily applied than White Lead.  
IT IS unrivalled for painting the inside and outside of houses, farm implements, boats, greenhouses, or any thing requiring paint.  
BY ACTUAL TEST it has worn six times as long as pure White Lead on a floor; it is equally good for door steps and decks of vessels.  
IT MAY be tinted to any shade.  
IT IS the most important article introduced for painting in recent years.

MANUFACTURED BY  
**Andrew Muirhead**

Office, No. 82 Bay Street  
Warehouse, Winning Lane  
Factory, St. Lawrence St. **TORONTO**

Please Mention the CANADIAN ARCHITECT AND BUILDER when corresponding with Advertisers.

**Architects.**  
Ontario Directory... 111  
Quebec Directory... 111

**Architectural Sculptors.**  
Holbrook & Mollington... i.

**Architectural Iron Work.**  
Canada Foundry Co. ix  
Dominion Bridge Co. i

**Architects' Tools.**  
Thornton & Co. A. G. xiv

**Blue Print Paper.**  
Hughes Owens Co. IV

**Bells and Clocks.**  
Menely & Co. xv  
Warner & Sons, John xiii

**Bridges.**  
Canadian Bridge Co. 151  
Dominion Bridge Co. i

**Builders' Supplies.**  
Luxfer Prism Co. x  
Ontario Lime Assoc. xvi  
Rice Lewis & Co. v  
Robertson & Co. D. vi  
Roman Stone Co. xv  
Silex Stone Quarries Co. vi  
Sackville Free Stone Co. vi

**Builders' Hardware.**  
Batty Stove & Hardware Co. iv  
Rice Lewis & Son. iv

**Bricks.**  
American Enamelled Brick & Tile Co. i  
Beausville Brick & Terra Cotta Co. ii  
Dun Valley Brick Works... 150  
Toronto Pressed Brick & Terra Cotta Co. iii  
Milton Brick Co. 152

**Constructors' Plant and Machinery.**  
Rice Lewis & Son. iv

**Cements.**  
Owen Sound Portland Cement Co. iii  
The Rathburn Co. 152  
Sun Portland Cement Co. x

**Croquet Stains.**  
Cabot, Samuel... xv  
Canada Paint Co. iv

**Door Spring.**  
Colledge & Bridges. xii

**Drawing Inks.**  
Wagner, Gonther... xii

**Elevators.**  
Fenson, John... i  
Ode Elevator Co. i  
Parkin Elevator Co. i  
Turnbull & Russell Col V

**Engravers.**  
Can. Photo-Eng. Bureau... ii

**Fire-Proof Doors, Etc.**  
Smith-Warren Co. i

**Folding Partitions.**  
Springer, O. T. ii

**Grilles and Railings.**  
Dennis Wire & Iron Co. viii

**Granite.**  
Brunet, Jas. vi

**Insulating.**  
Cautley, Tilden Co. iv  
I. E. Slantz... ii  
Irves & Co. H. R. ii  
James Smart Mfg. Co. xvi

**Interior Decoration.**  
Elliott & Son Co. xiii  
Geo. Jackson & Sons. xiii  
Richter Mfg. Co. iv

**Landscape Architecture.**  
Frederick G. Todd... 111

**Lime.**  
Ontario Lime Assoc. xvi  
Robertson & Co. vi

**Legal.**  
Quinn & Morrison... II

**Laundry Machinery.**  
Troy Laundry Machinery Co. iv  
Sombing, Wm. H. 111

**Lumber.**  
Canada Wood Specialty Co. iii  
Wilson Bros. 111

**Mantels, Grates, and Tiles.**  
Holbrook & Mollington i  
Rice Lewis & Son. iv

**Mail Chutes.**  
The Cutler Mfg. Co. i

**Mouldings.**  
Decorators' Supply Co. iv  
Det. Int. Decorative Supply Co. xv

**Mortar Colors and Shingle Stains.**  
Cabot, Samuel... xv  
Muirhead, Andrew... i

**Ornamental Iron Work.**  
Canada Foundry Co. ix  
Dennis Wire & Iron Co. viii

**Ornamental Plaster.**  
Hynes, W. J. iv  
Freck Walton... xii

**Painters.**  
Montreal Directory... xv  
Toronto Directory... xvi

**Patent Store Fronts.**  
J. W. C. Ulton & Co. iii

**Pyxias.**  
Toronto Plate Glass Co. viii

**Paints & Varnishes.**  
Bridgeport Wood Finishing Co. viii  
Canada Paint Co. iv  
Japanol Paint Co. vi  
Muirhead, Andrew... i

**Panquestry Floors.**  
Elliott & Son Co. viii

**Plate Glass.**  
The Consolidated Plate Glass Co. ii  
Toronto Plate Glass Co. viii

**Plumbers.**  
Montreal Directory... xvi  
Toronto Directory... xvi

**Roofers.**  
Duthie & Sons, G. xv  
Douglas Bros. xv  
Forbes Roofing Co. xv  
Hutton & Sons, W. D. xv  
Nicholson & C. D. xv  
Rennie & Son, R. xv  
Ormsby & Co. A. B. i  
Kingham, George... xv  
Stewart & Co. W. T. xv  
Williams & Co. H. xv

**Rubber Tinting.**  
Gutta Percha Rubber Co. iv

**Reflectors.**  
Frink, I. P. 111

**Roofing Material.**  
Ormsby & Co. A. B. i  
Ormsby & Co. C. i  
Roofers Supply Co. ii

**Rubber Stamps.**  
Young Co. C. G. xv

**Sash Cord.**  
Samson Cordage Works... iv

**Stained and Decorative Glass.**  
Bloomfield & Son. Henry... v  
Camm, Thos. Wm. xv  
Herwood & Sons, H. v  
Hubbs Mfg. Co. xi  
Mackay Stained Glass Co. v  
McKenzie's Stained Glass Works... v  
St. George, H. E. v  
Robert McCausland v  
Stained Glass Co. v

**Sanitary Supplies.**  
James Morrison Brass Mfg. Co. 152  
Johns & Co, Edward xli

**Shingles and Siding.**  
Ormsby & Co. A. B. i  
Roofers Supply Co. ii

**Roll Pipe.**  
Toronto Foundry Co. ii

**Tubing and Fittings.**  
Richmond Conduit Co. ii

**Tiles.**  
American Enamelled Brick & Tile Co. i  
Craven, Daniel & Co. i  
Holbrook & Mollington i  
Mallein Tile Works... xiii  
Permanent Decorative Glass Co. xiii  
Richards Tile Co. H. xii  
Stanley Bros. xiii  
Toronto Plate Glass Co. viii  
W. H. Herd & Son... xii

**School and Church Furniture.**  
Globe Furniture Company... v  
Can. Office & School Furniture Co. 111

**Wall Plaster.**  
Albert Mfg. Co. II  
Geo. Jackson & Sons xiii

**Wire Lathing.**  
The B. Greening Wire Company... xv

**Window Cord.**  
Samson Cordage Works... iv

ENAMELED BRICK

List of Contracts Furnished in Canada:

**PUBLIC BUILDINGS:**

Bank of Montreal	150,000
Royal Victoria Hospital	20,000
Banque de Hochelaga	3,000
<b>POWER HOUSE:</b>	
Montreal Street Railway Power House	17,000

**PRIVATE STABLES:**

F. W. Moleson	8,000
C. R. Hosmer	10,000
<b>OFFICE BUILDING:</b>	
Henry Berk's Jewelry Store	11,000 and quality

ONE YEAR'S BUSINESS

Local Agents in Montreal, Toronto and Ottawa

ENAMELED INTERLOCKING TILE (Substitute for Brick)

**American Enamelled Brick & Tile Co.**  
1 Madison Avenue, - - NEW YORK.

J. D. MACDONELL & CO.,  
Toronto Agents, Toronto.

(SEND FOR CATALOGUES)

HUGH CAMERON,  
Montreal Agent, Canada Life Building, Montreal.

Please mention this paper when corresponding with advertisers.

For Information About  
**MAIL CHUTES**

WHICH ARE

A Necessity in Office Buildings and Hotels,  
Write to the sole makers

THE CUTLER MFG. CO., ROCHESTER, N. Y.,  
PATENTED AUTHORIZED U. S. A.

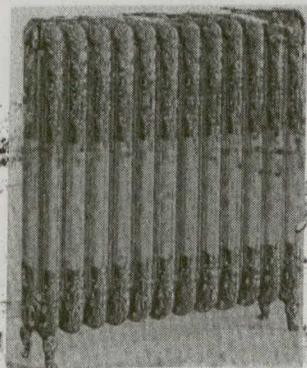
Reduce Insurance by Using  
**Smith's Patents**

Automatic Closing, Sliding and Revolving Sashes

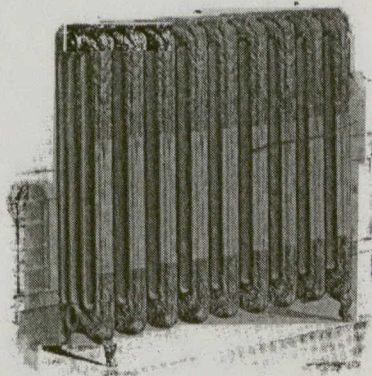
**Fireproof Metal Wire Glass Windows**

**SMITH-WARREN CO.,**  
253 Broadway, New York.

# Hamilton Radiators



★  
For  
Hot Water  
and  
Steam



*Are the production of the best mechanical skill to be procured.*

*Unexcelled in QUALITY, DURABILITY, and EFFICIENCY.*

*Made with all iron to iron joints—no packing of any kind.*

*Used in hundreds of the best and most expensive buildings in Canada*

Manufactured by ...

Correspond with us before deciding on your method of heating.

**THE GURNEY, GILDEN COMPANY**  
Hamilton, - Canada. LIMITED

TORONTO OFFICE: 134 Bay Street.

EASTERN AGENTS: H. R. Ives, Montreal, Que., and The Star Iron Co., Montreal.

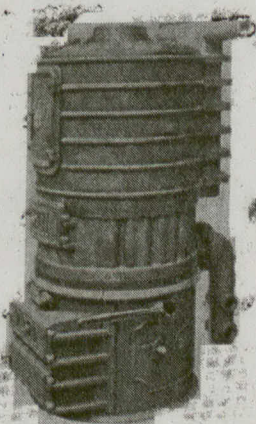
WESTERN AGENTS: The Gurney Stove & Range Co., Limited, Winnipeg, Man.

CATALOGUE FOR THE ASKING

## H. R. IVES & CO.

MONTREAL, QUE.

General  
Founders  
and  
Manufacturers



Architectural  
Iron Work  
Stable Fittings  
etc., etc.

**THE ROYAL-BUFFALO HOT WATER HEATER**

write for Catalogues

ARCHITECTS IN FURNISHING PLANS

For all kinds of Steam Heating and Power

MAY RECEIVE ADVICE OF OUR CONSULTING ENGINEERS

WRITE US FOR INFORMATION.

The Canadian Casualty and Boiler Insurance Co.

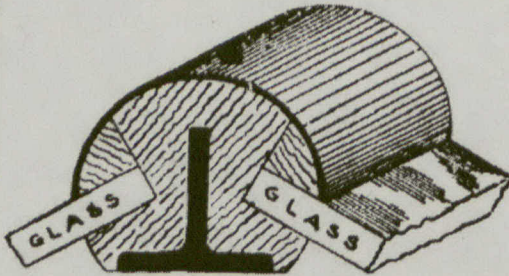
Head Office: N. E. Cor. Adelaide and Victoria Streets, TORONTO.

Authorized Capital  
Subscribed Capital

\$1,000,000.  
\$500,000.

President, ALEXANDER SUTHERLAND, D. D.  
Managing Director, A. G. C. DINNICK.

Vice-presidents, H. N. BATE and W. S. DINNICK.  
Chief Engineer, A. M. WICKENS.



The above is a correct representation of our full size No. 13 corner.

Patent Store Fronts

Coulson Patent Corner Posts  
and Transom Bars

for new or remodelled store fronts.

Greatest strength for holding costly glass safely.

Strongly recommended by the Plate Glass Insurance Companies and all architects.

J. W. GOULSON & CO.,

96-98 N. 3rd Street,

Columbus, Ohio.

When corresponding with advertisers please mention the CANADIAN ARCHITECT AND BUILDER.



ROCK FACE BLOCK.



DUCK BILL TOOLING

STONE

Manufacturers of all kinds of Concrete Stone or Concrete Terra Cotta for building purposes such as Moulded Courses, Sills, Ornament, Monolithic Foundations, Hollow Blocks, or anything for building purposes, and will substitute Natural Stone or Terra Cotta, and can be made to resemble either.

We also Sell Machines for Making this Stone

JARVIS CONCRETE COMPANY, LIMITED

McKINNON BUILDING

TORONTO



CROSS TOOTH CHISELED



TOOLED FACE BLOCK

## The Canadian Portland Cement Company, Limited

Manufacture "RATHBUN'S STAR" Brand

The Leading Canadian Portland Cement.

Capacity of Works: 500,000 Barrels per Year.

SALES AGENTS

The RATHBUN CO.  
310-312 Front Street West, TORONTO, ONT.

St. Lawrence Portland Cement Co.  
101-102 Board of Trade Building, Montreal, Que.

**Richter Mfg. Co.**  
Manufactured of Tapestry and Treatment of **BURLAP**  
CANYASES, ETC.  
A VARIETY OF TEXTILES FOR ARTISTIC DECORATIVE PURPOSES.  
N.Y. WAREHOUSE 20 E 21ST STREET  
TENAFLY, N. J.

Architects and Decorators are invited to send for our book of samples.

## THE BATTY STOVE & HARDWARE CO.



Wholesale Only.

—DEALERS IN—

Mantels, Grates, and Tiles,  
Gas Grates, Gas Logs, Andirons, etc.

ALSO A COMPLETE LINE OF

THE JEWEL STOVES AND RANGES,  
Hot Air Furnaces, Registers, Etc.

76 York Street   TORONTO.

## CAPITALS



Copyright, 1899, Decorators' Supply Co.

The Decorators'  
Supply Co.

209-215 South Clinton St.,  
CHICAGO, ILL.

Manufacturers of . .

Composition Capitals  
For Interior and Exterior.  
Interior Plastic Relief,  
Exterior and Interior  
Composition Orna-  
ments,  
Fine Grille Work.

Send for Catalogues.

## GRILLES

J. D. MACDONELL & CO.  
Ontario Agents  
19 Yonge St. Arcade, Toronto



Please mention this paper when corresponding with advertisers.

## PATENT INTERLOCKING RUBBER TILING



### THE IDEAL FLOOR COVERING

NOISELESS      NON SLIPPERY      WATERPROOF      SANITARY.

The interlocking feature unites the Tiles into a smooth unbroken sheet of Rubber unlimited in area. The Tiles do not pull apart or come up, and each being distinct any color scheme can be secured. The most durable floor that can be laid.

Manufactured solely by

The **GUTTA PERGHA and RUBBER MFG. CO.** of Toronto, Limited

Branches Montreal and  
Winnipeg.

Head Office and Warerooms  
45-47-49 West Front St.

TORONTO, CANADA

...Glass Painting...  
 Memorial Windows  
**McKENZIE'S STAINED GLASS WORKS**  
 8 AND 10 MAIN STREET EAST  
 Church and Domestic  
 Ornamental Glass. Hamilton, Ont.  
 Original Designs made to suit all classes of work.

**ROBERT McCausland, Limited**  
 86 Wellington St. W., TORONTO  
*Memorial Stained Glass*  
*Decorative Leaded Glass*  
*Superior Metallic Glazing*

**ART GLASS WORKS**  
 ESTABLISHED 1876.  
 Memorial Church Windows,  
 Geometrical and Quarrie Windows,  
 Art Glass for Residences, etc.  
 Send for designs and prices to

**H. HORWOOD & SONS** PRESCOTT, O NT  
 400 and 402 Bank Street, - OTTAWA.



**HENRY  
 BLOOMFIELD  
 & SONS**  
 ARTISTS IN  
 STAINED  
 and LEADED  
 GLASS  
 Mount Pleasant,  
 Vancouver, B. C.  
 SKETCHES AND  
 PRICES ON APPLI-  
 CATION.

HIGH-CLASS  
**FIGURE  
 WINDOWS**  
*Original  
 Designs.*  
**H. E. St. George**  
 150 Dundas St.  
 LONDON, ONT.

Please mention this paper when correspond-  
 ing with advertisers.

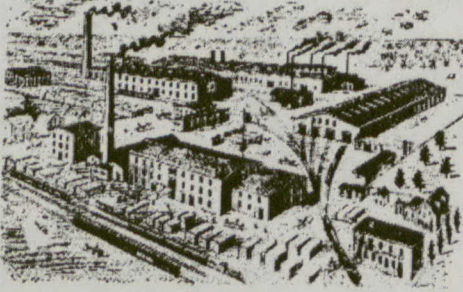


**The Globe Furniture Co., Limited**  
 MANUFACTURERS OF . . .

**OFFICE FITTINGS**

Church and School Furniture  
**WALKERVILLE, ONTARIO**

**RHODES, CURRY & COMPANY, LIMITED**



**BANK AND OFFICE FITTINGS  
 SCHOOL DESKS A SPECIALTY**

We manufacture all kinds  
 of building materials, includ-  
 ing cast iron columns, creat-  
 ing, sash weights, etc.  
 In addition to our large  
 stock of native lumber we are  
 now carrying about one mil-  
 lion feet of foreign lumber,  
 including oak, walnut, ebony,  
 whitewood, basswood, red ce-  
 dar, douglas fir, mahogany, &c.

**RHODES, CURRY & CO.**  
 Amherst, N. S.  
 BRANCH AT  
 HALIFAX SYDNEY

**THE  
 BUILDING NEWS**

FOURPENCE WEEKLY.

For Fifty Years the leading Architectural and Building Trades' Journal.  
**LARGEST CIRCULATION. BEST ILLUSTRATIONS.**

Annual Subscription to Canada, } \$6.25 or £1 6s,  
 including Postage . . . }

Best Medium for Advertisers.

SPECIMEN COPY FREE ON RECEIPT OF POSTCARD.

STRAND NEWSPAPER COMPANY, LIMITED, CLEMENT'S HOUSE, STRAND,  
 LONDON, W. C., ENGLAND.

**NOW READY**

Third Edition  
**Canadian Contractor's Hand-Book  
 AND ESTIMATOR**

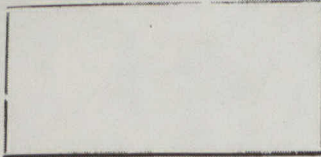
The third edition of the Canadian Contractor's Hand-Book has been published and is now on sale. The book has been revised and enlarged to upwards of two hundred pages, and the title changed to the Canadian Contractor's Hand-Book and Estimator, considerable matter bearing upon the cost of performing various kinds of work having been added.

The price of the third edition, mailed free, is \$1.00 to subscribers of the CANADIAN ARCHITECT AND BUILDER, and \$1.50 to non-subscribers. Order from the publishers,

**The G. H. Mortimer Publishing Co., of Toronto, Limited**  
 Confederation Life Bldg., Toronto.

Branch: Imperial Building, Montreal.

DIRECTORY OF LEADING STONE AND GRANITE DEALERS



**LIGHT BROWN  
or RED STONE**

*Sackville Freestone Co., Limited*  
Sackville, New Brunswick.

—LARGE BLOCK, DIMENSION, SHODDY.—

State your requirements and ask for prices before contracting.  
C. PICKARD, Managing Director.

**Amherst Red Stone Quarry Co.**  
AMHERST, N. S.  
**Amherst Red Stone**  
Samples Sent Free Hardens with Age  
Correspondence Requested

**STONE.**

Contractors can be supplied with all kinds of stones—Rubble, Coursers, all thicknesses, Footing Stone, Flagging, Crushed Stone, a d Grey lime, at Horse shoe quarry, St. Marys, Ont., at reasonable prices, in quarry or L.O.B. cuts at St. Marys, or destination. Also an analysis of their stone for refining purposes or a Dux. GEO. D. LAWRIE, Sec.-Treas. ALEX. DOUGLAS, Pres.

**JOHN KLINE**

—DEALER IN—

**ROUGH AND DRESSED GRANITE**

Heavy blocks a specialty. Street paving and curbing. Also granite for monumental and building purposes. Estimates and samples on application. JOHN KLINE, Granite Dealer, HALIFAX, N.S.

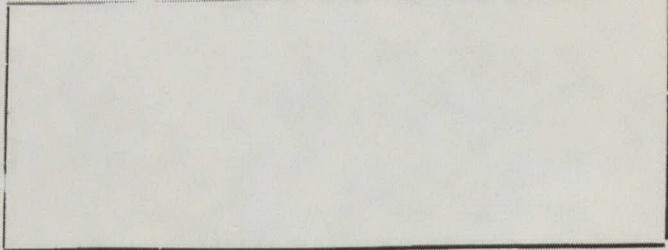
**GRANITE**

Red and Rose Pink

Fine Rich Colours for . . . . .  
BUILDING and MONUMENTAL PURPOSES  
and GRANITE PAVING  
can be had at low figures from the  
St. Philippe d'Argenteuil Quarries.

Send for quotations and samples to

**JOS. BRUNET**  
Cote des Neiges, Montreal, Que.



**JAMES BRODIE & CO.**  
Quarries and Manufacturers of . . .  
*Canadian Quinsy, Ebony  
and Stanstead Granite*  
Monumental Building, Curbing, Paving, etc. - Rough stock a Specialty.  
Mount Johnston, Que.



BROWN AND OLIVE

**FREE STONE**

Any dimensions and finest quality,  
for BUILDING PURPOSES, from  
our New Brunswick quarries.

**Pulp Stones**

SAMPLES ON APPLICATION

**WM. HOOD & SON**  
10 Richmond Sq., MONTREAL

**D. ROBERTSON & CO.**  
**LIME AND STONE**

Credit Valley Sandstone, Sills, Heads, Coursing and Dimension Stone our specialties, either dressed or in the rough.  
Lime Works at Milton.  
Offices, Toronto and Milton.

**THE AMHERSTBURG STONE QUARRY**

T. W. BELLHOUTSE, MANAGER.

AMHERSTBURG, . . . ONT.

Apply for prices on

**BUILDING STONE**

COURSING. FOOTING CRUSHED.

**TO CONTRACTORS  
AND BUILDERS**

Cheapest and best stone on the market for footing, bridge work, dimension of all sizes, sawed blocks, slabs and kerbing

**Silex Stone Quarries Co.**  
SHELburne, ONT.

**CROOKSTON QUARRIES,**

Crookston, Hastings Co., Ontario.

**LIMESTONE** adapted for all kinds of heavy Masonry.

Also Sills, Monument Bases, Rubble and Stone for crushing purposes.

Grand Trunk & C.P.R. Sidings.

**QUINLAN & ROBERTSON.**

**CREDIT FORKS STONE CO.**

23 Toronto Street

TORONTO

**Brown Stone Quarries,**

Supply the Best . . .

✠ ✠ ✠ **Credit Forks, Ont**

**BROWN STONE** IN . . . CANADA

DIMENSION COURSING  
RANDOM SHODDY  
HEADS, SILLS RUBBLE

**BRIDGE  
STONE**

OFFICE:  
23 Toronto street  
TORONTO  
Telephone Main 208

## TERRA COTTA FIREPROOF BUILDING MATERIAL

**POROUS TERRA COTTA** among underwriters is classed as preferred risk, and the schedule of rates now enforced in the city of New York shows a difference, often great, which, computed means an annuity on large sums of money.

This indisputable fact appeals to architects as representing clients who may soon be exposed to the same classification in Canada. An apparent saving in selecting cheaper fireproof material may be more than lost through increased insurance cost.

**POROUS TERRA COTTA FIREPROOFING** is a credit to the buildings in which it is used and increases their selling value.

The **Montreal Terra Cotta Lumber Company, Limited,**  
N. T. Gagnon, Selling Agent, 204 St. James St., Montreal, Canada.

# JAPANOL

An Enamel Paint  
A Flat Paint

A Paint of Unsurpassed Durability.

Will Stand Any Climate and is Suitable for Every Purpose.

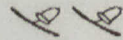
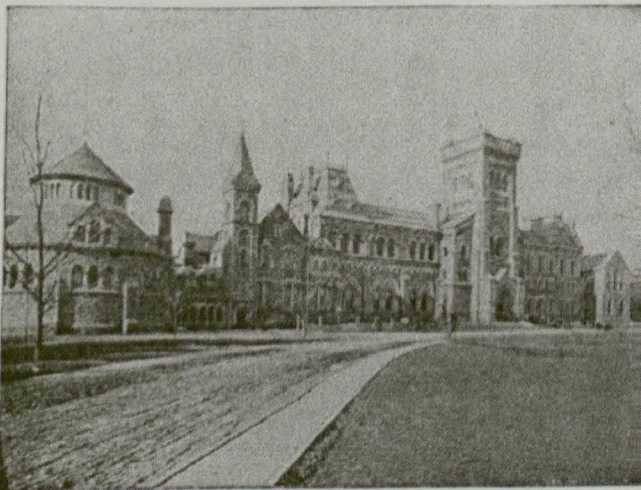
Made in over 100 Shades of Colour.

No Paint Equal in Quality or Value to Japanol.

## The JAPANOL PAINT COMPANY

Agents: Geo. Rogers, Son & Co., 22 Great St. Helen's, London, E. C.

### DO YOU USE ENGRAVINGS?



The leading  
Newspapers and  
the leading  
Advertisers in  
Canada use those  
made by

## THE ALEXANDER ENGRAVING CO.,

*Successors to Moore & Alexander*

Engravers, Designers and Commercial Photographers

Write for Prices....

16 Adelaide St. West, TORONTO.



# WOOD DYES AND STAINS

Golden Oak, Flemish Oak, Weathered Oak, Forest Green, Mahogany, Walnut, Cherry, &c. Write for information

## OLD DUTCH FINISH

If after first filling with Wheeler's Patent Wood filler the work is given an application of Old Dutch Finish you will get that dead result which is now so popular for furniture and interior trim.

### THE BRIDGEPORT WOOD FINISHING CO.

NEW YORK, 55 FULTON ST. CHICAGO, 70 W. LAKE ST. PHILADELPHIA, 231 DOCK ST. NEW MILFORD, CT  
McARTHUR & CO., MONTREAL. STEWART & WOOD, TORONTO.

## BENT GLASS

MANUFACTURERS

FOR { Shop Fronts  
House Windows  
Show Cases

FINE BENT GLASS FOR CABINETS AND ART FURNITURE.

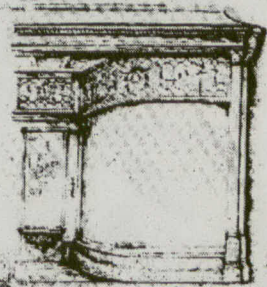
### Toronto Plate Glass Importing Co.

ALL KINDS OF WINDOW GLASS.

135 to 143 Victoria St.

TORONTO

Retractory Glass TRANSBONS for Light Diffusion.



LONDON, ONT.

SEND FOR CATALOGUE.



## OUR WOOD FLOORS

are made in our own factory and are now to be found all over Canada from Halifax to Vancouver. They are superior to the cheap American floors imported here and carry with them our guarantee. In addition to our catalogue design (free on request) we make any other design required at low prices.

The ELLIOTT & SON CO., Limited  
79 KING ST. WEST, TORONTO

# Use Rock Wall Plaster



## "WE WILL BOND YOU"

The United States Fidelity & Guaranty Co.

HOME OFFICE - BALTIMORE, MD.  
Head Office for Canada, TORONTO. Kirkpatrick & Kennard, Managers.  
6 COLBORNE STREET.

Capital	-	\$1,650,000 00
Total Cash Resources, over	-	3,000,000 00
Deposited with Canadian Government	-	95,000 00

ISSUES—Fidelity, Official, Fraternal Order, Contract, Judicial, or Court Bonds

Makes a speciality of issuing contract bonds. A business proposition. Responsible contractors should use us and avoid putting themselves under personal obligations. Consult our local representative

# The Canadian Architect and Builder

VOL. XVI.—No. 189.

SEPTEMBER, 1903.

## ILLUSTRATIONS ON SHEETS.

Golf Club House, near Montreal, Que.—A. F. Dunlop, Architect.  
Summer House at St. James, near Winnipeg.  
Houses, Nos. 348 and 350 Elgin Avenue, Toronto.—Chadwick & Beckett, Architect.

## ADDITIONAL ILLUSTRATIONS IN ARCHITECTS' EDITION.

Entrance, No. 3 Berkeley Square, London, Eng.  
Bishop's Chair, Trinity College, Toronto.—Eden Smith, Architect.

## ILLUSTRATIONS IN TEXT.

Views of the Guild of Handicraft, London.

## CONTENTS

Editorial	143-144	The Scientific Basis and Commercial Feasibility of Heat Radiators, using Air Instead of Water or Steam	151-152-153
Notes of Travel.—IV, (The Guild of Handicraft)	145-146	Northwest Letter	154
Bridge for the Canadian Niagara Power Company	147	A Departure in Hot Air Heating	155
Details of Modern Hospital Design	148	Wiring Methods and Materials	155
Fire Retarding Windows	149	By the Way	156
A Novel Suggestion	150		
Ancient Lights	150		

## SPECIAL CONTRIBUTORS.

MR. W. A. LANGTON, Architect, Toronto.  
EDMUND BURKE, " "  
S. H. TOWNSEND, " "  
FREDERICK G. TODD, Landscape Architect, Montreal  
W. H. ELLIOTT, Toronto.  
J. C. B. HORWOOD, Architect, Toronto.  
A. F. DUNLOP, R.C.A., Architect, Montreal.  
FRED. T. HODGSON, Architect, Collingwood, Ont.

### Grand Stands.

The return of the football season should act as a reminder to architects and builders as well as municipal authorities, that the lives of many hundreds of spectators will depend on the knowledge of those who design grand stands and the honesty of those who build them. Following the disaster on the football field at Glasgow last year, comes news of the recent collapse of one of these grand stands at Perth, Scotland, resulting in serious injury to thirty persons.

### Plainness in Design.

Less than two years ago we took occasion in these columns to deplore the cheap and meaningless ornament with which most of the furniture manufactured in the United States and Canada was being overloaded, and the consequent perversion of the public taste. It is gratifying to observe that in the short period that has since elapsed, there has taken place a radical change in furniture design, with the result that plainness is now the leading characteristic. The change is a most agreeable and wholesome one, and will be certain to have a beneficial effect on architectural design and furnishings. It would be interest-

ing to learn what have been the principal causes which have brought about within so short a time so complete a revolution in popular taste.

### The Commercial Congress.

The important bearing of commercial interests on national affairs and policy was well illustrated by the keen interest manifested throughout the Empire in the deliberations of the Commercial Congress held last month in Montreal. There is evinced a strong desire on the part of the various colonies and some of the leading British statesmen that the various parts of the Empire should be more firmly welded together. It is realized that one of the best means to this end is by promoting closer trade relations. A step in this direction was taken by the Commercial Congress in adopting a resolution affirming the desirability of this object and recommending the Imperial government to appoint a special commission to make thorough enquiry into the matter and make such recommendations as in its judgment might seem wise and feasible. The subject is of the highest possible importance to each constituent part of the Empire as well as to the nation as a whole. The

British government should lose no time in appointing a Commission capable and willing to give it prompt and careful consideration. The national life of the people of Canada, in all its varied relations and aspects must necessarily be largely influenced by those with whom we have most intimate trade relations. Therefore should not this question of our future trade relations possess an interest for architects, builders, and indeed citizens of every class?

Several years ago one of the few slate quarries then in operation in Canada, was closed down because a profitable market could not be found for the output. The Canadian market had been made a dumping ground for the product of United States quarries, for which there was not sufficient home demand, and prices were cut so close that there was no money in the business for anybody. Now the conditions are very different. The United States market largely absorbs the output of the quarries, and British importers who formerly got their supplies from that source are trying to buy in Canada. This would therefore seem to be a favourable time to revive the manufacture of slates on a larger scale in this country and especially in view of the assured increase in the home demand arising from the rapid growth of our population.

#### The Dominion Exhibition.

The extensive and interesting display of natural and manufactured products of all kinds shown at the Exhibition which has just closed in Toronto, taken in conjunction with the great improvements made to the buildings and grounds fully warranted the more ambitious title of Dominion Exhibition employed by the management this year. From an architectural standpoint the Exhibition has been rendered much more satisfactory by the erection in permanent material of a number of well designed buildings, such as the Art Gallery, Manufacturers' Building, Stove Building, etc., and the removal of many small structures which gave to the grounds a crowded appearance. With these out of the way the grounds convey an impression of spaciousness which greatly enhances the appearance of the principal buildings and satisfies the eye. The Stove Building, a substantial brick structure, has already proved inadequate for its purpose. While there was an exceptionally good display of heating apparatus by the various Canadian manufacturers, the exhibit would have been still more representative had the necessary space been available. It seems unfortunate that in planning this building provision was not made for the larger requirements of the future.

In keeping with the permanent character of the new buildings, the exhibits were on a larger and more varied scale than ever before, and received greater attention from visitors. The exemplification of manufacturing processes was a new and instructive feature, and the high quality of the finished products marked "made in Canada," should tend to dispel the too largely prevalent notion that for goods of the highest quality one must purchase from foreign makers. The expense and care bestowed on the

arrangement of the exhibits is deserving of praise and gave to this year's Exhibition a refinement in pleasing contrast to the crude results of earlier efforts. In this respect we have no doubt learned profitable lessons from the larger exhibitions in the United States. It is gratifying to know that we have reached a point in our national development where there is demand for beauty as well as utility. This demand is likely to be stimulated by a sight of the many beautiful examples of artistic workmanship comprising the collection of Jubilee presents, the loving tribute to Queen Victoria from her subjects in all parts of the Empire. The Canadian people are under a debt of gratitude to King Edward for the kind consideration which prompted him to allow this valuable treasure to be brought to Canada and placed on public exhibition. The enterprise of the exhibition management in securing such an interesting feature is also deserving of recognition.

The recently published statement showing the value of building operations in Toronto for the first half of the present year to be considerably in excess of the corresponding months of last year, came as a surprise even to persons most closely identified with the building industry. The opinion prevailed that owing to the long continued strikes the showing would be a bad one. The great scarcity of houses for rent in Toronto has compelled many persons to build, notwithstanding the high cost, and has induced a considerable amount of speculative building of houses of a fairly substantial character. It is in this direction that the greatest volume of building has been done this year. Apart from a number of new factories very few important buildings of a commercial or public character are in process of construction. The high prices of materials and labor coupled with unsettled labor conditions in Toronto led to the abandonment for the present of several costly undertakings. One regrettable feature of the situation is that owing to changed conditions some of these projects may never be carried out. In Montreal as in Toronto the demand for houses is very active, with corresponding activity in building. The suburban real estate sold during the month of July amounted in value to \$180,989 and in the city proper to \$732,838. The value of building permits for the month named was \$533,247. Reports from Winnipeg and other cities indicate that the building operations will probably exceed those of any previous year. Satisfactory as are the existing conditions, reflecting a high state of prosperity, they would have been much more so, had it not been for the uncertainty and delay caused by labor troubles.

It has been estimated that the aggregate cost of large buildings in South Africa now in process of construction or under consideration is about \$100,000,000, one half of this amount being for government work. The general tendency is not to be sparing as to the additional expense necessary to insure stability and comfort by the adoption of the most approved modern systems. A suggestion has been made for the establishment by English manufacturers of central depots at Cape Town and Durban, where stocks of heavy building materials would be carried. In the present state of affairs in South Africa there is a marked preference for constructional supplies available for immediate delivery. The results of similar arrangements in other branches of trade seem favorable to the development of this new project.

NOTES OF TRAVEL.—IV.

THE GUILD OF HANDICRAFT.

An actual, practical, going concern, devoted to handicraft as opposed to machine workmanship is worth visiting, and, as the new home of the Guild of Handicraft came by my way, I turned aside for a couple of days to visit it.

The Guild of Handicraft originated in an educational effort in East London. It began with classes for the study of design and the reading of Ruskin, carried on by the Guild's present head, Mr. C. R. Ashbee, at Toynbee Hall, the University settlement in East London. This was in the years 1886 and 1887. Reading led to designing, and designing to its application in practice, all in a small way at first. From this gradually grew a school in connection with a workshop, with the men in the workshop teachers in the school and the pupils in the school becoming gradually drafted into the workshop. When the Guild of three members had a school of fifty members, the indefatigable English benevolent subscribers stepped in—and here the story ends as an example of anything that would be possible in Canada. Funds were provided to carry the school through two trial years, on the top floor of a warehouse which became the school and workshop combined.

The school continued for nine years before it was extinguished by the State-aided competition of the London County Council Technical Schools. In the meantime it had not only had 700 pupils pass through its hands but had strengthened the Guild by the addition of a dozen or so of members, and their work was in demand. Beginning with wood and sheet metal work, they had added other works; they established themselves at Essex House, an old house in the East End, and became an established company of co-operative, autonomous workmen. Organization was in the hands of a committee; the committee elected a manager, who had a free hand in workshop discipline, but the individual guildsman had a right to lay his case before the committee. Such a thing as a real labor dispute is said to have never happened, and the value of the committee as a means of education, in the way of a sense of responsibility, steady and good work—in fact in the cultivation of a corporate conscience—is said to have been immense. The bonus at the end of the year is said to far outweigh, in the added sense of responsibility it gives, its actual cash value: Mr. Ashbee says "we have never found that the actual bonus made much difference; it is always the theoretical bonus that does the work."

Wages are paid on the basis of the Trade Union rate, wherever there is one, and the principle of inequality in human values is added. If, as sometimes happens, the Trade Union rate, in any individual case, is found to be in excess of the man's market value, the matter is settled by the manager and the Guild Committee in consultation.

It only remains, to complete the history of the Guild, to say that they are now a limited liability company, retaining as far as possible the good points of their original constitution. The workshop committee is still there, and the right of appeal from it to the manager; the committee does not, however, now elect the manager, which is done by the board of directors, but it sends a labor director to the board that does so.

A year and a half ago the Guild, finding itself enlarging to the point when expansion was inevitable, and as

London is not an easy place to expand in, made what to an onlooker seems its happiest move, in establishing itself in the country. Having found in Campden, in Gloucestershire, a decayed town, with houses to be got for the workmen, it moved there about a year and a half ago.



High Street, Campden.

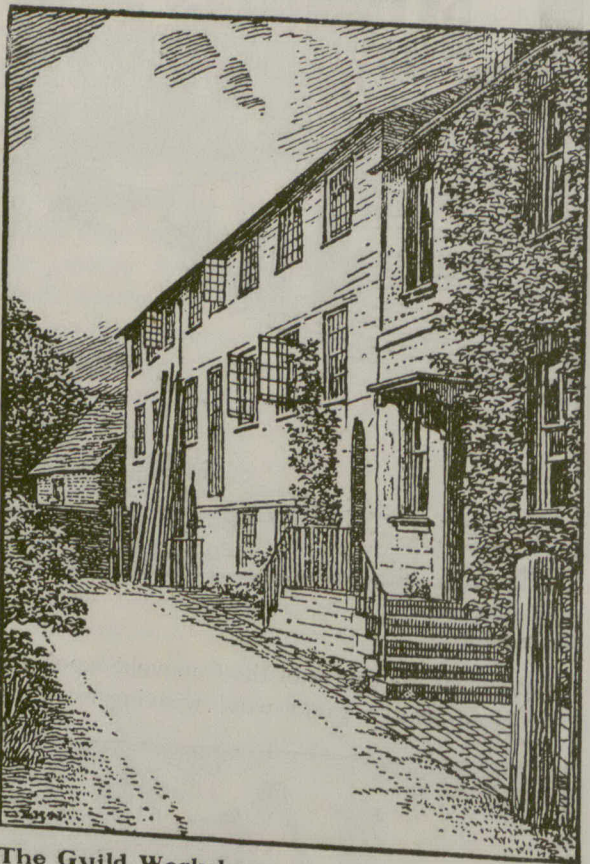
Campden, at the centre of the Cotswold wool growing district, was a great wool weaving town in the



A House in Campden.

fifteenth century and later. The old buildings remain—a fine church, some gothic houses, and some of

Renaissance periods; all of stone. Mr. Ashbee himself possesses a house which contained the old wool merchants' hall, and he thus has a sitting room with a black timbered roof. The Guild workshop is an old stone silk mill in a garden—mill and residence one building, as was the happy way in those days. They have built a machine house with a gas engine and dynamos, for electric lighting and what machinery they use for preparing their wood; the smithy is also out of doors; for the rest the three floors of the woolen mill suffice for their several works which comprise, besides the blacksmithing: joinery, wood carving, metal work in silver and brass, jewel making, enamel working, printing and bookbinding. The clink of hammer and



The Guild Workshops,  
Campden,

As to the work:—the blacksmithing is of course exactly what blacksmithing should be; a set of Guild fire irons (which, by the way, showed no loving marks of the hammer, but had a sort of lovingness in the soft section of the twist and in a certain whitey blackness of color) would be a pleasure to see—and to use. The smiths are also making electric fixtures which promise to be elegant, though iron. The snakey tendrils of the “pine apple pattern” come in well here. The trail of this serpent is over the work of the Guild. They have also come under the influence of Burne Jones' sinuous female with the high navel. In fact there is a school mark upon their work that seems to be conscious, and intended to suit a market that asks for the kind of thing. In their silver vessels—all of which are beaten out of the sheet metal—the hammer marks remain, because they say people like them so. Their silver work is certainly fine and is more substantial than spun silver. The hammer marks are very slight; not made for effect, but merely left, when the form is perfected, without further work; and the result is a sort of richness of surface; nevertheless, as these marks could be removed by further hammering, the dignity of a silver chalice seems to require that they should be removed. There is no particular virtue in the marks of the workman's hand, except as a trademark of the school that does handwork in an age when machine work is the rule.

Of the same kind is the square edged joinery of this school, which, I confess, bores me. If our rude forefathers did not know enough to mould, we do. There is something tiresome about this inability to adopt the method of good old work without adopting its manner too.

There is the same snare evident in the work of the hand printers. William Morris was not really a reformer in this respect. The Kelmscott Press was only an expression of discontent with the present; expressed by reverting to the past. But that sort of past is past. There is a clear field yet for any one who has been infected with the discontent and would allay it by creating a type with the beauty of usefulness. It is not necessary to create; the earliest printing, earlier than the period Morris preferred, has all the qualities of design combined with perfect legibility. Some of the publications of the Guild of Handicraft are printed in this type, making a perfect book. It is to be hoped that the Guild will be content to shine by this simple excellence. But the market for fine books is the market of the connoisseur and collector, perverted beings who from seeking the peculiarity of goodness have come to seek peculiarity as in itself goodness. The hand printer therefore finds it wise to make sure of his market by designing a special type which will mark the work of his own press; but to design a type that will have special peculiarities, and yet be as simple as the best type—which is the simplest—is a feat which will task even such an accomplished designer as Mr. Ashbee.

The Guild seems to have secured a field to itself in jewelry of modern design. There is a staff of men constantly employed supplying the Guild shop in Bond street, where the jewelry which is displayed makes a very attractive window.

They do also some good enamelling—a seductive looking work as applied to decorative landscape. It is simply glass dust floated on metal and fused in a furnace. Here is the principal difficulty, as the colour, without which the work is nothing, depends upon judgment as to the length of exposure in the furnace.

The great satisfaction in working in the Guild workshop, must after all be that designing and execution are, if not always by the same hand, at any rate in such close contact and communication, and standing upon such equal ground, that the designer is really in touch with his material, and this makes designing a pleasure because it makes good design possible.

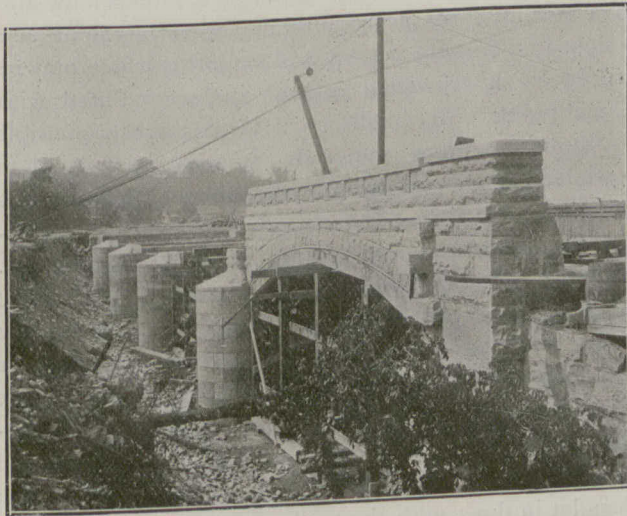
W. A. LANGTON.

metal, which one hears in approaching, strikes an ear, which is accustomed to the sound of machinery in such a building, with a sort of quaintness, analogous to the small scale of old buildings beside the new. Inside there is also a noticeable difference. Instead of a number of mechanics doing the same thing over and over again, and that only a step on the way to something they never know what, every man is here doing a piece of work which is usually his own from beginning to end; if not, it is only, as in the case of the carver, that his work finds its application in work that is done by other hands, and he is at any rate in touch with the work to which it is applied. This is a happy condition and it is no affectation to say that this workshop affects one's spirits pleasantly, whereas a machine shop suggests nothing but working between whistles; a terrible treadmill to which men have doomed themselves, as a consequence of mating. Here the Guild of Handicraft decidedly scores. The cant phrase, that art is the “expression of the workman's joy in his work,” has here a chance of exemplification; a man may be interested in his work as well as in his wife. By so much more also that the work is done in a garden, and the air is fresh.

BRIDGE FOR THE CANADIAN NIAGARA  
POWER COMPANY.

BY ORRIN E. DUNLAP.

A bridge that is being built by the Queenston Quarry Company for the Canadian Niagara Power Company has several interesting features. The site of the bridge is in Queen Victoria Niagara Falls Free Park, and it is to span the canal inlet leading to the forebay in front of the power station of the Canadian Niagara Power Company. When completed it will be one of the links in a beautiful driveway along the upper Niagara



NEW BRIDGE FOR CANADIAN NIAGARA POWER COMPANY.

River on the Canadian side, a locality that is just at present undergoing numerous changes as a result of the extensive power development now taking place there. These changes call for many new features, and this bridge is one of them.

The bridge is to be a concrete-steel structure with stone facing, and in general appearance will resemble somewhat the new bridge erected some months ago between the mainland and Goat Island on the New York side of the river. The length of the bridge to end of posts will be 298 feet. There will be five spans, each of 50 feet, and they will have rises of five feet. The piers will be eight feet wide on the face of the bridge and 66 feet  $3\frac{3}{4}$  inches long to outside of cutwaters. The piers are set on bedrock, necessitating four or five feet of excavation. The stone used in the bridge is from Queenston, Ont. The piers below the springing line are pointed. The belts, washes and the coping are all of fine dressed work. Steel ribs spaced three-foot centers will be imbedded in the concrete of the arches. Portland cement is being used exclusively on the work.

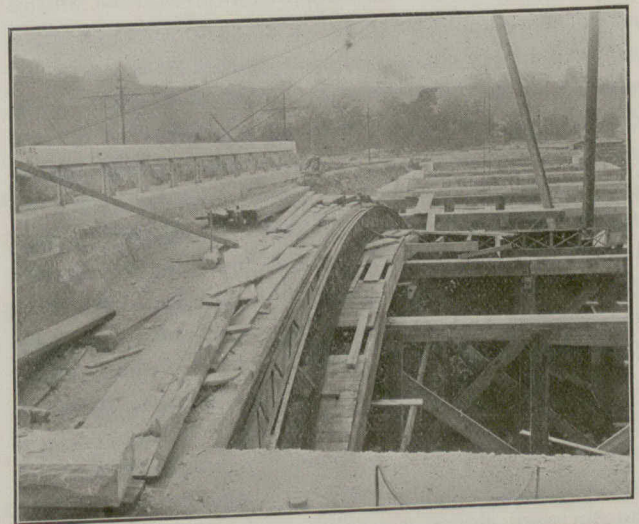
The width of the bridge is to be 55 feet over copings, except at the piers, where there is a projection of about a foot, making the width of the bridge at the widest part about 57 feet. Inside of the copings the width is 52 feet, and of this 26 feet is to be devoted to double tracks of the Niagara Falls Park & River Railway, an electric line that skirts the river on the Canadian side, 20 feet to the driveway, and six feet on one side to a granolithic walk. The roadway is likely to be of porous gravel or cinders finished with macadam. The grade of the roadway will be practically level, the gutters being graded from the center of each arch to the piers, catch-basins being placed over each pier. Drainage is provided to be carried off in cast iron pipes that will discharge at about the springing line of the arch. It

may be pointed out that the arches were made of such small rise in order to avoid raising the railway tracks, which will be on a fill approaching the bridge. The abutments of the structure are built of concrete in which large stones are imbedded. A conduit having four compartments has been built in the sidewalk for carrying electric wires for lighting the bridge, a pipe being inserted in each of the main posts. The specifications call for a loading of 5,000 lbs. per lineal foot on one track of the railway, and 100 lbs. per square foot on the driveway.

The arches and backing of the spandrel walls and the piers above springing line, are to be built of Portland cement concrete, the proportions of which are to be one part cement, two parts sand and four parts broken stone. In the piers below the springing line the proportions of the concrete are to be one part cement, three parts sand and six parts broken stone. In the construction of the bridge the contractor is required to trowel two inches of mortar onto the lagging in order to give a smooth surface on the concrete of the soffit of the arch. In building, the contractor is required to start the concrete simultaneously from the ends of the arch and lay it in longitudinal sections. While being built, timber forms hold the sections in place. The tops of the arches and backs of the spandrel walls are to be given two coats of pure Portland cement grout applied with brushes and then covered with two thicknesses of felt. This is in order that the arches may be made waterproof so that the dampness will not come through and stain the masonry.

Before the construction of the bridge a coffer-dam was built between the site and the waters of the river. The water that will pass beneath the bridge will flow to the turbines in the wheel-pit of the Canadian Niagara Power Company. High water will be 1.37 ft. above the springing line of the arch, which will be a depth of 17 9-10 ft. of water in the inlet canal. Low water will be 3.93 ft. below the springing line of the arch, or a depth of 12 6-10 ft. of water in the canal, while the mean stage of water will be 1.83 ft. below the springing line, or a depth of 14 7-10 ft. in the canal.

This beautiful bridge was designed by William A.



NEW BRIDGE FOR CANADIAN NIAGARA POWER COMPANY.

Brackenridge, one of the consulting engineers of the Canadian Niagara Power Company, and the structure is being built under the direction of Cecil B. Smith, resident engineer of the Canadian Niagara Power Company. It is without doubt to be one of the most beautiful bridges on the Canadian side at Niagara, and will be a material factor in adding to the new beauty of Victoria Park. Its magnificent lines and fine appearance will go well toward showing that even though industry has invaded the Canadian pleasure ground at Niagara, it is the intention of the park commissioners, and also of the Canadian Niagara Power Company, so far as it is concerned, to do nothing that will mar the natural beauty of the surroundings of the falls.

## DETAILS OF MODERN HOSPITAL DESIGN.\*

BY A. SAXON SNELL, F.R.I.R.A.

Under the title of "Details of a Hospital Ward," Mr. Snell spoke of some old principles of ward construction which ought not to be forgotten. There is a tendency to consult new ideas at the cost of neglecting certain important sanitary principles. The author refers to several instances of new wards constructed upon the latest principles which have proved unsuccessful. As he says: "The old wards were known to be dangerously unclean, and special precautions were therefore taken to counteract their condition. The new wards were so very bright and clean that anything but perfunctory cleaning was scarcely thought necessary. In the old wards (which were dangerously unclean) the windows were kept open, and the very walls, innocent of plaster, were porous enough to be an assistance to ventilation. In their view it appeared that the provision of air inlets was thought to obviate the necessity of opening the windows." Another example of the neglect of well-worn principles is given. "The drainage of a certain building was relaid upon modern principles with manholes at every branch and change of direction. The old drains were always flushed periodically, and thus kept fairly clean. The new drains were supposed to act for ever without such assistance." The author says, five years after they were laid he made an examination of the system, "and was compelled to use a crowbar to open the covers of the manholes, which had never been touched since the drains were first laid." These are instances of the adoption of new methods of inspection which are never properly utilized. In another case the inlet ventilators of a ward were expensively constructed with glazed pipes. On visiting the hospital a year afterwards he found those flues black with dirt. They were never cleaned. Everyone knows it is an accepted principle of ward construction that all angles and corners should be rounded, so as to avoid all sharp angles and deep-cut mouldings where dust and dirt can lodge, and yet this principle is often subverted by the adoption of methods of flooring which harbor disease germs. The insistence of floors of smooth and impervious materials free from holes or crevices is one that cannot be exaggerated. Therefore, the author says plain-jointed soft wood floors are objectionable, as such wood shrinks, and thus leave joints for the secretion of dust and dirt, and are, moreover, absorbent. Speaking of hard wood floors, Mr. Snell has been in the habit of adopting kiln-dried maple in narrow widths, which is an "exceedingly hard and unwearable floor, its light color showing up dust more readily than dark woods." Oak and teak are commonly used, and the author says the terrazzo floors are advocated on account of their impermeability, though this is questionable, he thinks, when the high polish is worn off the cement. Asphalt is also useful, but its dark color is against it. As for finishing wooden floors beeswax and turpentine are recommended. The author speaks also of the importance of well rounding the angle between floor and skirting, a radius of  $2\frac{1}{2}$  in. to 3 in. being used; but Mr. Snell thinks  $1\frac{1}{4}$  in. radius enough, and this hollow or rounding must be formed of the same material as the floor. Sometimes hollow bricks are used for the hollowing, but the joints are numerous. On the question of wall surfaces the author does not discuss the advan-

tages of either the porous or impermeable wall. Hygienically, we should prefer for hospital walls the cavity principle of construction, with materials sufficiently permeable to allow a degree of transpiration; but modern hospital practice has adopted the impervious walls, and the object aimed at is to make the interior wall surfaces as smooth and hard as possible, so as not to retain dust, and to be capable of easy cleaning. The germ theory is accountable for this view as well as for other modern ideas of construction, such as the rounded corners and angles. The hospital ward is often lined with tiles which make an impervious and clean surface; but practically the numerous joints are against it. A more perfect and smooth surface may be insured by a trowelled cement surface painted with enamel paint. Mr. Snell says: "It is scarcely possible to obtain a more generally smooth surface than trowelled cement—Keene's or Sirapite. These can be brought to a polished surface. It is difficult, if not impossible, however, to obtain a really even color. Although enamel paint can be used with decorative effect, pictures would still be required to decorate the walls, and the ordinary framed picture is a veritable dust trap. Therein tiled surfaces have the advantage of painted walls, as they can be decorated with permanent pictures painted on the surface. . . . It would be possible to cover permanent wall paintings with glass let in flush with the wall surface, and I am not sure that this has not been done." There is an important suggestion here. We believe that for ordinary wards, painted tiled pictures of a quiet character and tone could be one of the best substitutes; a better would be panels high up or introduced in a deep frieze painted in distemper. We believe pictures can be fixed to the cement surface, and then covered as suggested by glass or enamelled, so as not to harbor dust, and be washable. A bare blank wall surface, even if colored a nice grey or in quiet tones of green, is monotonous if not relieved by pictures or prints, which appear to be necessary for the eyes of patients of an artistic temperament. The question is one that may well be considered by hygienists and architects engaged in hospital building. Ceilings are suggested to be best painted and non-porous; there are several kinds of paints in the market that may be used; and other appliances, like thin enamelled metal that can be bent easily, have been used. Touching the important question of windows, little definite information is given. The ordinary sash window, with a hopper and spandrel sides to prevent down-draught, is perhaps the simplest mode, and the author thinks that casement windows with solid frames are not open to the objection of angles, crevices, etc., involved in the sash window. At Willesden Parish Infirmary the author has used casement windows brought down to within 12 in. of the floor, and with hopper next the ceiling. The casements open inwards, and form a protection for the bed, and by opening them the wards can be flooded with air. At the Charing-Cross Hospital Mr. Snell is adopting the "Middlesex" windows, which include five sashes of equal size in the height, all of which, excepting the lowest, are hung on centres and controlled by one rod or lever. The sashes close one upon another, and there are no transoms. The lowest sash is hung on the bottom rail. The advantage of this form of window is that it can be opened to a larger extent than the ordinary sash window. All ex-

\*Abstract of Paper read before the British Sanitary Institute Congress, Bradford, England.

cepting the controlling lever is fixed on the outside of window, and if the glass can be fixed flush with the inner surface of sashes, it is desirable. For doors, hardwood, of course, is adopted, oiled or polished. Enamel paint is also a good substitute. Architects engaged in this class of building are naturally looking for doors without panels, which give a lodgment for dust and dirt. The flush panel doors are a step in the right direction, but the joints open and become crevices for dust. The author then refers to Canadian doors made up of small sections of solid soft wood, very closely fitted together and sheathed with hard wood, dovetailed on the whole, and pressed by hydraulic machinery. A flush-panelled soft-wood door, veneered with thin oak, seems to be all that is desirable, or a thin metal-cased door. In the fittings and furniture of wards the observance of the principles of smoothness, freedom from crevices, and projecting parts is quite as important. The author mentions some improvements in bedside lockers. The tops are now made of glass or marmorite, which is a valuable substitute for glass, and there are no unnecessary joints or crevices, and the whole can be cleaned. As for cupboards, they are certainly objectionable in wards, as they foster concealment of various things. A closed cupboard is used for holding surgical and medical appliances, medicines, &c.; but these should be placed, we certainly agree, not against the wall but in the centre of ward, and the cupboard should be made of hard wood framed and glazed all round, and have glass shelves. Heavy tables and chairs, so charming to the artistic instinct, are shunned by the hospital expert. Stoves are numerous, those made of iron plates and grills and moulded are not recommended; those built up with firebrick and tiles are preferred, as they are cleaner and better radiators. As to the important questions of heating and ventilation, nothing is suggested except that all pipes and fittings should be arranged so as to be easily kept clean; that controlling valves, etc., be kept out of ward; and that all flues with movable gratings in floors or walls, should be made easy of access for disinfection and cleaning. Mr. Snell refers to the deceptive and objectionable character of many sinks and basins on the market designed for hospitals which are made with glazed surfaces and rounded angles on the top and sides, but are death-traps underneath, full of pockets never likely to be cleaned.

#### FIRE RETARDING WINDOWS.

The introduction to the report of the British Fire Prevention Committee on fire tests with prism glass reads as follows: "We have for a considerable time been applying various forms of 'fire resisting' construction, and various materials for the separation of fire risks, but we have somehow neglected the very necessary precaution of protecting such openings as have to admit light, and through which the spread of fire may involve an entire building.

"In the case of houses facing one another, in respect to buildings overlooking mutual areas, dormers overlooking adjoining roofs, and in many other instances where the separation of adjoining risks is all-important, protection of shutters and blinds had frequently been advocated, but the counter-argument has always been that shutters will not work in an emergency, or that

their presence is entirely forgotten in the hour of need. As far as internal glass partitions, fanlights, glass panels to doors, etc., are concerned, nothing has practically been suggested, and hence there have been no arguments one way or the other on these points.

"It has been discovered by sheer accident, I believe, that, by adopting special methods of glazing glass, plain, plate or prismatic, will withstand a high temperature, and the application of water, and it is urged that by adopting such methods of glazing there will be no necessity for the shutter or the blind, inasmuch as the window or skylight will in itself afford considerable protection.

"The report which we now publish, and which gives particulars of the committee's official test with some glazing of this description, speaks for itself. The glass in this case was prismatic glass, but similar investigations will yet be held with plain glass and with plate glass, where this method of glazing is adopted.

"With plain glass and plate glass light, will, of course, be introduced in the ordinary manner, but with the prisms, light can be reflected into special directions and the lightness of a room enhanced.

"It is indeed interesting to have to consider a form of glazing which, besides being fire-retardant, is intended to enhance the lightness of a room, and the executive fully appreciate the importance and significance of their tests with this method of construction, inasmuch as the facts obtained should materially influence the reduction of the fire risk of the metropolis in a direction that has not yet been tried."

In the report of the National Fire Protection Committee of America the last paragraph in regard to glass fire retardants reads as follows:

"Your committee would recommend that the investigation as to the fire-retarding qualities of electro-glazed windows, and especially of luxfer prisms in electro-glazed frames, be continued, as results of fire tests, so far as noted, would indicate that in good fire-proof window frames, and possibly with glass units reduced in size, electro-glazed windows may be useful under certain conditions as fire retardants. A fire-retarding window which at the same time is useful for proper distribution of light would be of value in a great number of instances."

Mr. E. U. Crosby, in his report to the National Fire Protection Association on the subject of light wells and other vertical hazards, includes the following among his conclusions:

(a) There should be no light wells; the loss of illumination due to abandonment of the light well can be more than made up by proper use of luxfer prism glass in wall windows, helped out in especially deep or angular buildings by the modern artificial white lights.

(b) Where such a well is allowed to exist it should be cut off from connection with each story with prism glass partitions set in non combustible frames, permanently secured in position. First story to be shut off from wall by a similar horizontal partition at ceiling level.

The right place for a fire escape is not right in line with window fronts, but on a blind wall, with connecting approaches or bridges.—Fireproof.

Messrs. D. H. Burnam & Co., the well-known firm of architects of Chicago, are said to have employed a staff of ninety men and are only prevented from employing a greater number by lack of office accommodation.



## A NOVEL SUGGESTION.

We have heard a great deal in recent years about the smoke nuisance, as relating to industrial works. Some cities, including Montreal, have passed by-laws providing for the compulsory use of smoke consumers, which, if of doubtful value to the citizens at large, have been a source of profit to inventors and manufacturers of devices intended to burn or otherwise get rid of the smoke which constitutes a nuisance and a detriment to health when emitted into the atmosphere via the factory chimney. It remains for an associate member of the British Institute of Civil Engineers, Mr. G. T. Beilby, in a recent paper, to direct public attention to a new phase of this subject, viz., smoke abatement as applied to houses. Mr. Beilby estimates that in Great Britain 36,000,000 tons of coal are consumed annually in about 8,000,000 inhabited houses, and calls attention to the fact which probably nobody would dispute, that the domestic grate is at the mercy of a larger and more varied selection of incompetent stokers than any other coal-consuming appliance. As the only feasible means for abating this phase of the smoke nuisance, this author suggests that a chimney tax might be so applied as to stimulate and bring about the widest and most radical improvement in domestic heating. His plan would be to tax every chimney which is sufficiently wide to vent the products from the burning of raw coal, and leave free all those which are too small to do this. "This would at once place a premium on the use of smokeless fuel, as gas and coke can be satisfactorily burnt with very narrow chimneys. The production of these forms of fuel would be enormously stimulated, and the devising of appliances for their combustion would be encouraged. The architect and the engineer would have a new and fruitful field for their ingenuity and skill, and their trained efforts would in a short time greatly advance our practical knowledge of the subject."

"At present," remarked Mr. Beilby, "the 9 in. chimney holds absolute sway, and a house built without its full complement of these chimneys is looked on as abnormal and outside of the ordinary practice of those who buy and sell or who lend money on house property. The builder, therefore, declines to build houses which are really adapted for smokeless firing by gas or coke, with the result that these fuels have never had a chance of showing at their best." It is estimated that a tax of one shilling per chimney would yield a revenue of £800,000. Mr. Beilby's suggestion is an ingenious one, but it may safely be predicted that no attempt is likely to be made to put his ideas into practice. In Canada the general use of bituminous coal and the most approved devices for cooking and heating reduces to a minimum the amount of smoke discharged into the atmosphere. Here the necessity for ample size flues in chimneys must be urged, the tendency of builders being to make the area of the chimney too small, with the object in some cases, no doubt, of saving a little material.

The death is announced in Switzerland of Mr. Geo. F. Shepley, the well known American architect. Mr. Shepley was born in St. Louis in 1860, and received his professional education in Boston, being a graduate of the Massachusetts Institute of Technology. He entered the office of H. H. Richardson and on the death of the latter continued the business in partnership with Mr. Coolidge and Mr. Rutan who has been for many years connected with the office. The firm gained a distinguished place among the leading architects of the United States and carried out many important works.

## ANCIENT LIGHTS.

The Ancient Lights Bill, the result of the labours of a joint committee of the Royal Institute of British Architects and the Surveyors' Institution, has been introduced by Mr. Fletcher Moulton, K.C., Mr. Robson, Mr. H. D. Greene, and Mr. Herbert Robertson, and was read a first time in the House of Commons on June 22; but, unfortunately in the present congested state of business, says *The Building News*, so useful and practical a reform has no chance of becoming law. The measure has as its full title, "An Act for Amending the Law Relating to Easements of Light," and it consists of eight parts and some twenty-seven clauses. Part I. provides that its operation is to be restricted to England and Wales, and Part II. consists of half a dozen definitions. Part III. deals with the limitations of the amount of light of a dominant owner, and Part IV. provides for the obstruction of an accruing light easement by notice in place of the existing clumsy mode of physical obstruction. Part V. provides that no title by presumption shall be acquired to light passing over a tenement on the opposite side of a street. Part VI. makes elaborate provisions for certificated plans of buildings about to be taken down, which will be a great interest to "official surveyors," by which term are described district surveyors in London, and county or borough surveyors elsewhere. Part VII. regulates the statement of claims arising out of rights to light, and is the most verbose of all, and Part IX. provides for the construction of a tribunal of appeal, consisting of nine members, to be appointed in equal proportions by the Secretary of State, the R.I.B.A. Council, and the Surveyors' Institution Council.

## NOTES.

The fire-escape, as ordinary built, is the ladder of flame.—Fireproof.

"None of the best headwork in art, literature or science, is ever paid for."—Ruskin.

"All good architecture is the expression of national life and character."—Ruskin.

"They say every man is the architect of his own fortune."

"That may be so, but usually he can't get intelligent contractors to carry out his ideas."

There is said to be a good demand in South Africa for good draughtsmen and architects' assistants, but not for architects wishing to engage in practice. Of these there are said to be many men already on the spot who are familiar with all local conditions, having been in practice before the war, and who therefore have much advantage above outsiders.

In answer to a correspondent who asks "what would be a safe load on solid concrete columns (composed of broken brick and cement) 13 ft. high and of 14 in. average diameter?" the *London Builders' Record* gives the following: If composed of 1 part of good Portland cement, 4 of hard-burnt brick, and 1 of clean sand, a safe load would be 10 tons, though concrete columns of the size stated ought to sustain 40 tons before they failed.

There was recently unveiled in Paris by the Minister of Public Instruction, a marble monument to Charles Garnier, architect of the Grand Opera House in that city. The monument is placed in an outer angle of the Opera House, and is, as it were, a signature upon the building. Upon the pedestal is traced a plan of the Opera. This is surmounted by the bust of the great architect, flanked by figures in bronze symbolical of Fame and the Graphic Arts. Charles Garnier was the son of a blacksmith. He was born in Paris in 1825, and at an early age showed an aptitude for drawing. When a young and obscure architect, he easily won first place in the competition for designs for the Paris Opera House, which is his best monument.

THE SCIENTIFIC BASIS AND COMMERCIAL FEASIBILITY OF HEAT RADIATORS, USING AIR INSTEAD OF WATER OR STEAM.\*

BY GEORGE M. AYLSWORTH M.D., COLLINGWOOD, CANADA.

In the past many have thought that air could be used in radiators instead of water for the distribution of heat, and about twenty years ago a U.S. patent was issued covering the point.

The scheme, however, proved a complete failure owing to the radiator being simply a square box many times the capacity of the conducting pipes. The current of air was so rapid that it passed through this box radiator in a straight line and an enormously large proportion of the air in the box was not changed in temperature at all. As a consequence the hot air parted with but a small percentage of its heat, while passing through this box form of radiator. The general appearance and construction of the radiator is shown in Figure 1. The scientific reasons for the adoption of its peculiar form and the use of thin sheet metal in its construction are as follows:

The conditions requiring to be met were a distributing agent that would make the circuit of the furnace and radiators many times while water was making a similar circuit once. At the same time, the rapidly moving air would absorb much less heat from the furnace, bulk for bulk, than the slower moving water.

The problem therefore was to evolve a radiator that would compel the air passing through it to part with all or nearly all of its heat to the air of a room without diminishing the rapidity of the travel of the confined air.

The problem has been solved by the adoption of four devices.

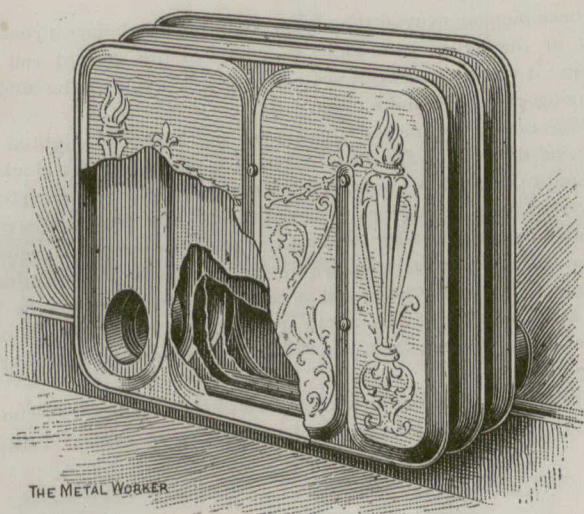


FIG. 1.

First, by increasing the distance the air has to travel within a short space.

This was accomplished by the up and down or to and fro course the air is compelled to take in passing through the radiator. The distance from the centre of the inflow pipe to the centre of the outflow pipe is 2 feet, while the air travels in the radiator four and a half times as far, or an average of 9 feet.

Second, by offering the least possible obstruction to the passage of the heat from the air within the radiator to the air outside the radiator, but within the room.

This was accomplished by using sheet metal as thin as is consistent with rigidity.

Third, by compelling the volume of air to spread out into thin sheets so that all of it while passing through a radiator, should be kept as nearly as possible in contact with the enclosing metal.

This is accomplished by having the conduit through each section of the radiator, 1 x 7 inches rectangular in form, instead of round or square. The method of piping consists in having the area of the conducting pipe equal to the areas of the conduit or conduits in the radiator or radiators served by it. Also in having the volume of air necessary to serve a radiator, whether it have one or more sections, conveyed to the radiator in a single round or square column.

It will be noted that this method causes the difference between the circumference of the supply pipe and the conduits in the radiator to increase with each section that is added to it. The conduit in a single section has nearly double the circumference

of its round supply pipe, while the conduits in a four-section radiator have three and one-half times the circumference of its round supply pipe.

The conducting pipes of a single section are round 3-inch pipes having a circumference of 9 inches and an area of 7 square inches, while the conduit through the section has a circumference

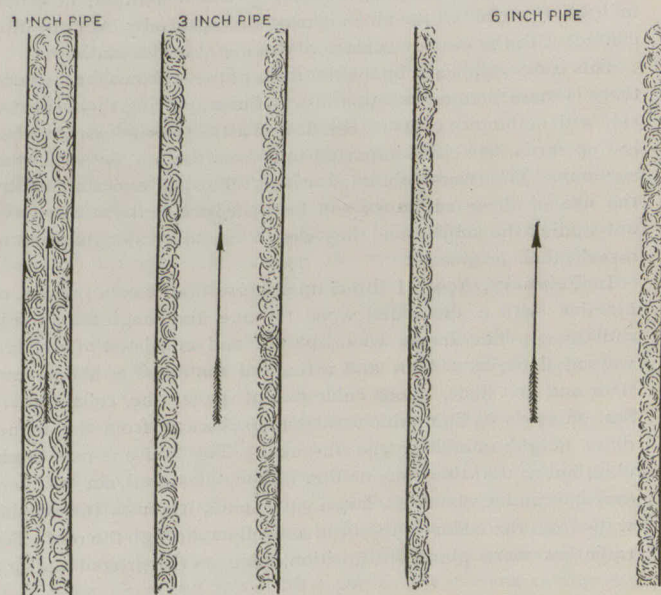


FIG. 2.

of 16 inches and an area of 7 square inches, or the same area as its supply pipe.

A four-section radiator is served by a 6-inch round conducting pipe, having a circumference of 18 inches and an area of 28 square inches, while the sum of the circumferences of the four conduits is 64 inches and the sum of their areas is 28 square inches, or the same as their 6-inch conducting pipes.

The extremely flat shape of the conduit through a radiator also prevents any part of the air it contains getting more than half an inch from the enclosing metal, while the centre of the air current through a 3-inch round pipe is 1 1/2 inches away from the containing metal or three times the distance, and in a 6-inch round pipe, 3 inches or six times as far from the metal, and so with each change in the number of the sections in a radiator.

It is a well-known fact, which can be confirmed by observation

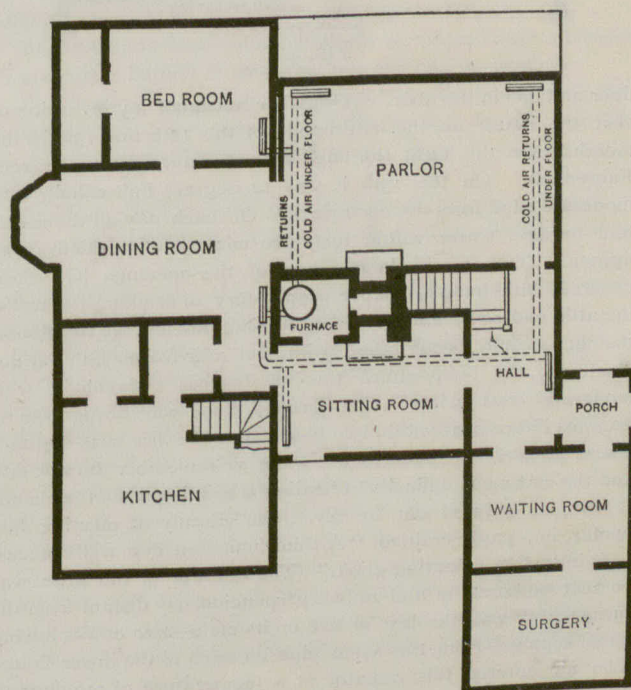


FIG. 3.

of any stream of water, that fluid in contact with the wall of a pipe, on account of the friction, takes on a revolving motion while passing through it, but the whole area of the current does not partake of this revolving motion unless the pipe is extremely small. The part of the area of the current that is unaffected by this motion increases in proportion to the whole area of the pipe, provided the rapidity of the current remains the same. (See cut.)

\*(Presented by request at the Summer Meeting of the American Society of Heating and Ventilating Engineers, Niagara Falls, N.Y., 1903.)

this fact in connection with the other facts—that air cannot possibly get more than one-half inch from the confining metal when passing through one of these radiators, and can get from three to six times that distance from the metal in the pipes conducting the air to them—suggests the vast importance of the flattened conduit through the radiator.

Fourth, by facilitating convection; by which method, in order to heat a room, all the air in it must be repeatedly brought into contact with the outside surface of the metal in the radiator.

This is accomplished by the flat form of the sections, and where there is more than one section in a radiator, placing them side by side with nothing to obstruct the flow of air between them from below upwards, as heat is imparted to it from the hot air within the sections. The results obtained in the following experiments by the use of these radiators will be a surprise to those who have not studied the subject and they were a cause for astonishment to myself, their originator.

In February, 1902, I fitted up a house that was in process of erection with a discarded wood furnace and rough hand-made radiators. The house was isolated and consisted of a cellar, ground floor, first floor and attic, and contained on the ground floor and first floor, 18,000 cubic feet of space; the cellar had a foot of ice on its floor which was chopped away from the immediate neighborhood of the furnace. The house is now brick-clad, but at that time was neither lathed, plastered nor bricked, and had many openings, large and small, through the outside walls from the cellar to the attic as well as through the roof. Ten radiators were placed in position, nine on the ground and first

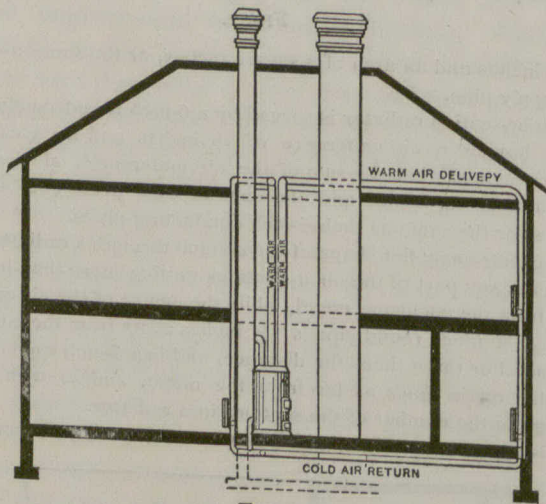


FIG. 4.

floor and one in the attic. A number accepted my invitation to visit the house on the afternoons of the 12th and 13th of the month. On the 12th, the outside temperature was 22 degrees Fahrenheit. On the 13th it was 12 degrees Fahrenheit, with moderate wind from the northwest. On each day all the radiators became warm within forty-five minutes after the fire was lighted. Two weeks later many of the openings had been covered with building paper preparatory to bricking the walls, the attic and cellar had been roughly shut off from the two floors, the house had been lathed with wet and frozen lath but not plastered, the temperature was 18 degrees Fahrenheit, with moderate west wind. The ground floor was brought to 63 degrees Fahrenheit within two hours after the fire was lighted. These results are phenomenal when we remember the wet lath and the enormous difficulty of heating a building when the plaster is wet, as pointed out by Mr. John Gormly at meeting last winter, in a paper entitled, "A time limit and dry walls necessary in testing a heating plant." The radiator in the attic was 20 feet horizontally and 20 feet perpendicularly distant from the furnace; it was the last of five on its main—two others having been supplied from the same pipe on each of the lower floors. The air entered this radiator at a temperature of 213 degrees Fahrenheit, and left it at 122 degrees Fahrenheit. Some of the heating experts present at this test believed, or at least said, while admitting the results, that the system would not stand a practical test of the many turns in the piping needed to place radiators at the points needed or preferred by house owners, nor would it succeed with the slower fire, as from anthracite coal.

To meet these objections, and having in the mean time had the radiators made in a presentable form, I fitted up my own house with them in 1903.

The house was an old-fashioned frame of two stories, the part served with radiators containing 17,000 cubic feet divided into ten rooms and two halls. There being no basement nor cellar, the furnace was set upon the ground floor and burned anthracite coal. It had never been repaired nor had its location been changed, although it had been in use for thirteen seasons. The ten radiators installed were supplied from three main pipes, two

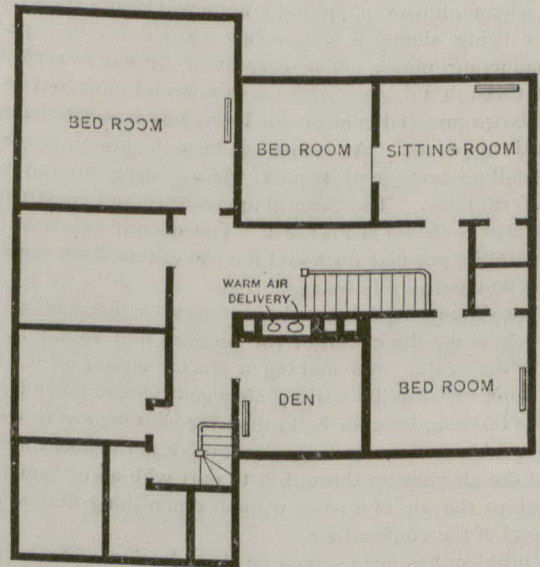


FIG. 5.

of these pipes conveyed the air through the attic before it reached any of the seven radiators; they served the ground and first floors; it was an overhead system, which it is hoped the accompanying plans will make clear.

The tinsmiths finished their work and a fire was lighted at 2 p.m. on the 19th of February. The next morning at 8 o'clock the temperature outdoors was 6 degrees Fahrenheit, and in the house it varied from 44 degrees to 60 degrees. The house was never as cold again, and after the first few days the system was better balanced and the variation within the house seldom exceeded 10 degrees, and only once did it reach 16 degrees, when the temperature outdoors was about 11 degrees, with a gale blowing from the northwest, the temperature within varied from 54 degrees to 70 degrees.

In passing from the furnace to two of the radiators, the hot air travels a distance of 62 and 71 feet, passing through the attic to

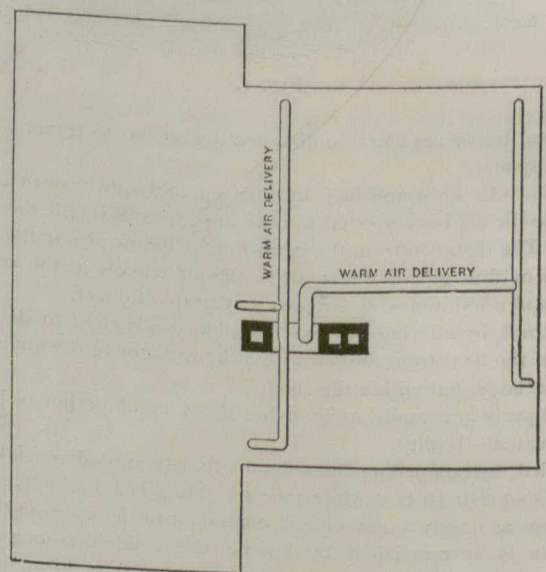


FIG. 6.

do so. In making the circuit from the furnace to these two radiators and back to the furnace, the air travels 107 feet and makes 13 turns, exclusive of the radiators, which if counted would make the air travel 116 feet with 21 turns, showing conclusively that turns in the piping have little or no effect upon the flow of air when it is confined and used in this way, and demonstrating how easily any probable conditions in any medium-sized building can be met with this system.

The foregoing results are much better than could be obtained with this furnace under the old system, for before the installation

of the radiators it had been found necessary, in order to get the same comfort, to supplement the furnace with two stoves and a large drum on the first floor. The latter utilized the heat from the smoke pipe of the furnace and it and the two stoves were done away with after the radiators were put in. Over and above this a very large percentage of the heat generated by the furnace is wasted, while the hot air is passing through the pipes in the attic before reaching the radiators. For the large amount of piping in the attic kept it at a higher temperature, notwithstanding attempts at insulation, than either of the lower floors, which of course was not the case before the radiators were used.

As to the consumption of fuel, it is impossible to be exact in connection with these experiments, but the quantity consumed during the two and one-half months the radiators were used would indicate that the present arrangement will not require more than the old one has done.

One of the reasons for uncertainty in estimating the consumption of fuel, in addition to the removal of the two stoves and heating drum aforementioned, is its rapid diminution, as the best method of running the furnace under the changed conditions was learned—for instance, two tons of coal were consumed in the first 18 days, a third ton in 11 days, or (omitting fractions) a ton every 11 days. A fourth ton was burned in 23 days, and a fifth in 18 days, or a ton every 20 days. That is an average per day of twice as much burned during the first 29 days than was burned

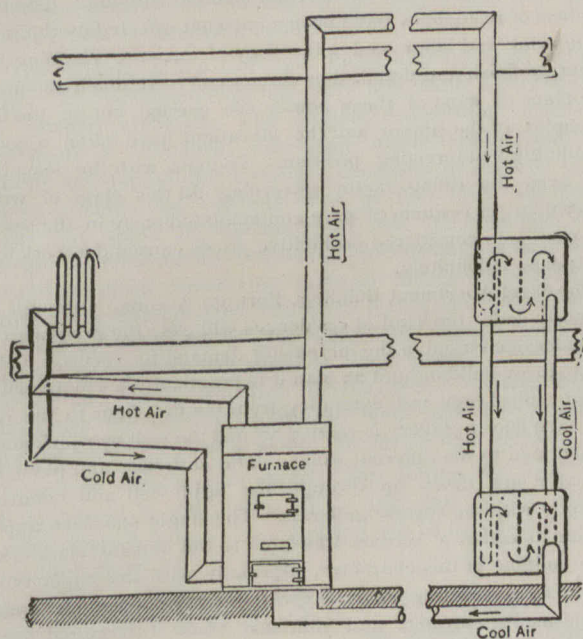


FIG. 7.

during the last 41 days, though the average was within a degree of being the same in each of the two periods with increased comfort during the latter. The rate at which the coal was consumed during the 41 days is almost identical with the rate of consumption in the past when registers were used.

The diameter of the fire pot in this instance is 18 inches, because the builders of the furnace claimed that that size pot was plenty large enough to heat 18,000 cubic feet. But this, as was not unusual in those days, was an overestimate, and at the present time it is unusual to find a reliable hot air furnace-maker making such a claim even when the familiar instructions—"Locate the furnace so that all hot air pipes shall be as short as possible" and "Place registers as close as possible to the furnace" are closely followed.

In this test of hot air radiators these rules have been purposely violated, and the departure from them is so wide that it is believed that 50 per cent. of the heat from the furnace is lost in transmission to and through the attic.

It is not anticipated that any one in his senses will adopt such an overhead system except under compulsion, neither can it be expected that the results under the conditions of this test should be ideal, yet they are the basis of the confidence felt that the proper installation of these hot air radiators will demonstrate beyond all question, during the coming winter, a decided economy in the consumption of fuel through their use.

#### DISCUSSION.

Secretary Mackay: Before starting a discussion I move a vote of thanks to Dr. Aylsworth for his courtesy in preparing

this paper and presenting it to our Society. The motion was carried.

Prof. Kent: I notice that the rate of coal consumption is said to be the same as when registers were used, and would like to ask what is the advantage of this system?

Dr. Aylesworth: A large proportion of the heat was wasted—I estimate 50 per cent.—by passing through the attic, so that there was really more heat produced from the fuel.

Another advantage is that the air does not pass over the excessively hot surfaces of the furnace and then into the rooms, which is one of the points raised by steam and hot water advocates as an objection to the use of furnaces.

Mr. Switzer: Had you any supply of outside air?

Dr. Aylesworth: None whatever. My house has a large ventilating shaft, but there is no ventilation in connection with this air that passed through the radiators. The shaft passes between the two chimneys, up through the roof, forming a continual exhaust from the rooms; there are also two fireplaces on the ground floor.

Prof. Kent: How serious is the objection to having the air pass over the furnace in the usual way and be discharged into rooms?

Mr. Cobey: There is more or less objection to burning out certain elements of the air before we breathe it.

President Crane: The temperature given for the air passing into the radiator is 213 degrees, and that at the exit 123 degrees—a little hotter at the entrance and cooler at the exit than in a well balanced hot water apparatus, which is not commonly more than about 180 at the flow, with a diminution of about 15 degrees at the return.

Prof. Kent: This strikes me as a very well designed system for the results sought to be accomplished. Reducing the temperature from 213 to 123 shows an excellent design of the radiator, and the piping system must also be very well designed in order to avoid short-circuiting the air. In larger houses, with more branch pipes, I should expect more difficulty in circulating the air uniformly.

I do not see that pure air is hurt by passing over surfaces at 300 or 400 degrees. If it contains bacteria you may cook them and have a bad smell, but I think that is unimportant in practice.

A disadvantage of this system is that it does not ventilate as do other furnace systems, which is a strong argument in their favor.

This system would circulate just the same if the radiators were left out. The air would be discharged into the room, be breathed and returned to the furnace to be reheated. A disadvantage would be the possible leaks in the furnace.

Mr. Feldman: Dust contained in the air passed over a furnace is sometimes burned in cold weather, and can be smelled.

Mr. Roys: In an ordinary furnace-heated house the wind forces the heat to the other side of the house. In this case the circulation is not affected by the wind, which is a very great advantage.

Mr. Allen: In Fig. 4 the two circuits of pipe are shown as very unequal in length. I would ask if they are of the same size?

Dr. Aylesworth: No; the size of a pipe is governed by the amount of radiating surface it supplies.

Mr. Oldacre: How is the radiating surface proportioned to the contents and exposure of the rooms?

Dr. Aylesworth: The same as with steam or water.

Mr. Switzer: What is your source of air supply? If some of it escapes and the supply is insufficient to carry away the heat from the furnace, fuel would be wasted.

Moreover, it would shorten the life of the furnace to reduce the quantity of heat taken away from its surfaces.

Dr. Aylesworth: The system is not absolutely air tight any more than an ordinary furnace is. In practice, the furnace was used for two or three months and there was no perceptible loss of power, either by diminution of the volume of air or deterioration of its quality.

Mr. Oldacre: If in a furnace heated house one side is colder than the other the work is not properly done.

Secretary Mackay: I do not agree with Mr. Oldacre. I think that in 90 out of 100 cases the furnaces on the cold side of a building act as a cold air supply. I take it that the doctor heats his house more satisfactorily with the present system than he was able to before with the same furnace.

Mr. Chew: An ordinary furnace is to some extent preserved by the constant flow of cold air over its surfaces. In this case the

surfaces are exposed to what is comparatively a hot blast. The question is, how long will the furnace stand such treatment?

Mr. Cobey: I do not think a fire pot is more likely to be destroyed by passing 120 degree air over it than by air at zero, which is likely to disturb the iron by unequal contraction.

Mr. Chew: Moreover, to raise air from zero to 200 degrees the fire pot would have to be white hot, which would not be necessary if the return air is at 100.

Mr. Oldacre: I have never observed any deteriorating effect from cold air—even 10 below zero. The highest temperature of air discharged from a register, in very cold weather, was 190, which I consider too high, and that more air, at a lower temperature should be used—not above 150. The larger the volume of air the more nearly it approaches the quality of outside air.

Mr. Roys: I think Mr. Oldacre is speaking of an ideal system, while the Doctor is speaking of common practice. In my experience I find the air coming from registers as high as 400 degrees, and only getting down to 150 in mild weather.

Mr. Oldacre: Would not the casing of this furnace be so hot as to lose much heat in the cellar? When air is taken from outside the casing is so cool that you can put your hand on it. When I have found a hot casing it has indicated poor circulation, or some other trouble.

Mr. Roys: As a furnace is commonly installed it would often be impossible to even touch your hand to the top of the casing. I believe the fire underwriters say there are more fires caused by hot flues than any other cause.

Mr. Oldacre: I would like to have pointed out to me a single case where a house was set on fire by a hot pipe—I do not mean the chimney.

Mr. Roys: Mr. Sims, of the board of underwriters, claims that there are hundreds of such cases.

Mr. Switzer: I know of such a case. The wall pipe was not protected in any way and the pipe was air bound, so that it did not circulate. It was in 10 below zero weather, with a 30 mile gale forcing the air into the lower rooms, which grew colder, and this pipe to the second storey got hot enough to ignite the wood work

One of the objects of this society is to educate men to put in furnaces as perfectly as those Mr. Oldacre describes, which it is entirely possible to do.

Secretary Mackay: Dr. Aylesworth does not mention any valves or dampers to shut off the heat from a radiator. What effect would it have on the furnace to shut off one room or more?

Mr. Cobey: The system is in a primitive state, and the controlling appliances can easily be added. I think we shall some time adopt the direct radiation with separate provision for ventilation. I do not think it desirable to introduce the heat and the air for breathing through the same duct as it often gives a bad odor.

Mr. Schaffer: Answering a question of Mr. Chew, I will say that a furnace supplied with air from inside will last longer than if supplied with air from outside.

Prof. Kent: I would ask the size of these radiators.

Dr. Aylesworth: My present idea is to limit the radiators to four sections, of about 14 square feet of surface to the section.

In regard to heating the cold side of the house with these radiators, the colder the exposure the more rapid the circulation in the exposed radiator.

In regard to dampers, the instructions to the manufacturer who shipped this radiator here, were that he should put the damper in place, in the inflow pipe of the radiator, at the bottom. The effect of closing a damper would be the same as closing the register on any furnace, or any steam or water radiator.

For special ventilation it is planned to place another pipe outside of the exhaust pipe of the radiator, and connect it with the outdoor air.

Prof. Kent: I would ask how the Doctor gets a loss of half the heat in the attic?

Dr. Aylesworth: The attic covers the whole building, has roof exposure, and was kept warmer than the rooms below; there was a good deal of piping in it—the pipe, which is 10 in. at the start, runs 34 feet.

Prof. Kent: How would you change that in another building?

Dr. Aylesworth: Put the horizontal pipe below the floor.

Mr. Chew: I notice in Fig. 7 two systems of piping are shown; that at the right going up through the attic and that at the left being a direct flow pipe along the cellar ceiling, with a pipe up to the radiator and coming directly back. I would ask the Doctor's preference.

Dr. Aylesworth: It is decidedly preferable to carry the pipes through the cellar.

Mr. Oldacre: What are the advantages of this system over hot water or steam?

Dr. Aylesworth: It is cheaper to install and the expense of repairs is slight.

#### NORTHWEST LETTER.

(Special Correspondence of the CANADIAN ARCHITECT AND BUILDER.)

WINNIPEG, Sept. 9, 1903.

Although the building season here is not by any means closing in, yet all important work that is to be roofed before the hard frost comes is now well under way. The season has been a most satisfactory one from a builder's point of view and the amount of work that has been carried out is almost incredible compared with that done in former years. The great advance in prices both of material and labor this year would, it was expected, cause buildings to be cancelled to such an extent as to possibly retard the progress of the city, but contrary to expectation the quantity of work proceeded with has been so great that only by the united efforts of the contractors has it been successfully coped with.

Apart from the business blocks, warehouses, etc., the number of residences in course of construction is enormous, and although most of these are not of a very high order of architecture yet the relief they will give in this direction is most edifying. The better class of residences have been somewhat affected by the price of material and labor and in the way of intricate planning and elaborate finish and detail, they do not call for much comment. The plans of most of these houses are carried out on the first principles of the square and the elevations have taken a correspondingly uninteresting position. To build with the least cost has been the ruling factor governing all this class of work. Several larger residences were contemplated early in the season but what was considered prohibitive prices caused the work to be postponed indefinitely.

The Steel Apartment Building, Portage Avenue, although not properly under the head of residences will ease the pressure to a considerable extent in the increasing demand for rooms. This is a six-storey building and on plan it is practically a square with a large central light well extending from the first floor to the roof. On each floor a gallery is carried around the well by which access is obtained to the different suites. The staircase and passenger elevator are taken up through the light well and connected directly with the several galleries. The single staircase appeals to one as rather a serious drawback to the satisfactory working of a building of this character, especially with the capacity this has of accommodating such a large number of people. A separate tradesmen's entrance and staircase would if arranged greatly facilitate matters and solve the problem of efficient service to the different floors. Each floor is divided into eight suites, each containing from three to five rooms with a bath room to every suite. A rather doubtful arrangement has, I think, been planned for the bath rooms and kitchens. These rooms are all lighted from the central light well, this light well itself being covered in with a skylight and rendered practically a closed area. In elevation the building is extremely simple; the material is buff pressed brick (Lac Du Bonnet) and Tyndall stone bands.

Apropos of residences, I am sending you for this issue of the CANADIAN ARCHITECT AND BUILDER a photograph of a summer house for Mr. R. Wilson. This house is beautifully situated on the bank of the Assiniboine river at St. James, about four miles west of the city. In plan it is rather interesting, and I enclose a rough line drawing of same. The front of the living room opens by means of glass doors, the full width and height of room, so that in warm weather this room becomes practically a large verandah. The kitchen arrangement is most satisfactory as it is really quite detached from the remainder of the house and all heat and odor emanating therefrom is kept absolutely clear of the living rooms.

In taking up the larger work the banks call for the most attention. The completion of the Bank of British North America has been somewhat hampered on account of the delay experienced in waiting for stone and progress for this reason has been much slower than was anticipated. The work will, however, be ready for the roof towards the end of the month.

The contract for the Union Bank's eleven story steel frame building has been awarded to the Fuller Construction Company, of New York. It is needless to give a dissertation on the status

of a company which has reached such unprecedented records both in the amount of building continually under its supervision and in the remarkably short space of time in numerous instances required for the erection of same. The company is commonly known as the pioneers of steel frame buildings and their name is synonymous with "sky-scraper." The receiving of this contract has caused a new departure in the business of the Fuller Construction Company as it opens up a field in Canadian work which up to now had not been entered upon. Although the granting of the contract for such a large work would perhaps have been more satisfactory if it could have been given to a Canadian firm, yet in the present instance it can hardly be looked upon with disfavor. The methods employed by such a company, who are habitually used to command material and labor in any proportions, will be most interesting to follow in this western country where the supply of material of all description is chronically infinitesimal. To push a work of this category in Winnipeg with anything like the marvelous rapidity with which it is consummated in the States would from our present mode of building be nothing short of a miracle, and the entry of such builders amongst us cannot help but accelerate the movement of material in all quarters, and the benefit accruing from such cannot fail to eventually benefit the community at large.

The undertaking of a building of this description by the Union Bank cannot but be an incentive for other institutions of like calibre to follow and we may in the near future anticipate a series of like structures to be erected.

The building of the Carnegie Public Library is at last under way. The commission for this work was finally awarded to Mr. S. Hooper, architect. The original competition, open to all architects in Winnipeg, was after much turmoil and many stormy and unprofitable meetings, cancelled by the City Council on the grounds that the tenders on the first three selected designs were above the stipulated cost, and the remainder of the designs (five) not meritorious enough (presumably) in their opinion to warrant them considering same for tender. A second competition was subsequently held when Mr. S. Hooper and Mr. F. S. Griffiths were invited (the remaining original competitors ignored) to again submit plans in competition. Mr. S. Hooper was the successful competitor in the duel. Messrs. Smith & Sharpe are the contractors for the work and they expect to have the building closed in before the severe frost arrives.

Augustine Presbyterian church, Fort Rouge, Mr. J. H. Russell, architect, is well under way. The cost of the work is roughly about \$40,000. The building will be faced with Tyndal stone throughout.

The Land Titles large new building on Broadway is progressing, but sufficient work has not yet loomed up to judge of anything relating to design.

The vote on the City By-law asking for an additional \$60,000 for the addition to the Winnipeg General Hospital resulted in rather a peculiar manner. The total vote polled was somewhere about 2,000, and out of this number less than 100 voted against. As the law governing a poll of this nature stipulates that 2/3 of the total number of names on the voter's list must be cast the measure was at first thought to be lost on these grounds. The matter has, however, been taken up by the City, and legislation is now being sought whereby the poll can be legalized, as the vote showed that it was only through apathy on the part of the citizens that the by-law was not carried through. The passing of this measure by the Government is now practically settled and work is being proceeded with accordingly.

Nothing definite has yet been decided upon by the Canadian Pacific Railway regarding the projected new Subway, Station Hotel, etc., although work may commence here at any date.

W. PERCY OVER.

THE CANADIAN BUILDING AT THE ST. LOUIS EXPOSITION.

The contract for the erection of Canada's Pavilion has been awarded to John J. Dunnivant & Co., the contract price being \$28,000. The building will be 100 feet square, two stories, and surrounded by porticos. The architect is L. Fewings Taylor, of Ottawa, Canada.

The building must be completed by December 1. A permit for its erection has been issued, and Mr. Dunnivant says he will commence work at once.

The Canadian reservation is about half way between the Agricultural Building and the Forestry, Fish and Game Building. The handsome pavilion which is to be Commissioner-General Hutchinson's official home on the World's Fair Grounds next year and which will serve as a club house for Canadian visitors to the Exposition, will stand southwest of and close to the big floral clock on the northern slope of Agricultural Hill. The building will face the avenue which runs north and south in front of the Administration Building and extends to the Agricultural Building.

The National Fire-Proofing Company, of New York, have published a leather bound Catalogue containing many useful tables giving safe loads and illustrating methods of fire-proof construction. The price of the book is \$3.00.

Attention is called to the advertisement in this number of the Canadian Casualty & Boiler Insurance Company, whose head office is in Toronto. The managing director of this company, Mr. A. G. C. Dinnick, is a gentleman of ability and large business experience. He has associated with him men having the high standard of technical knowledge requisite for the proper inspection and insurance of boilers, &c.

DR. ROBERTSON, PRESIDENT.

J. S. McCANNEL, MANAGING DIRECTOR

# Milton

## ARCHITECTURAL TERRA COTTA

We make a Speciality of Ornamental Brick and Terra Cotta Mantels

High-Grade Pressed and Ornamental Bricks in red, buff, yellow, salmon, brown, and Special shades. : : :

# Pressed

Our products have a wide reputation and are specified by leading architects

## THE MILTON PRESSED BRICK CO., LIMITED

# Bricks

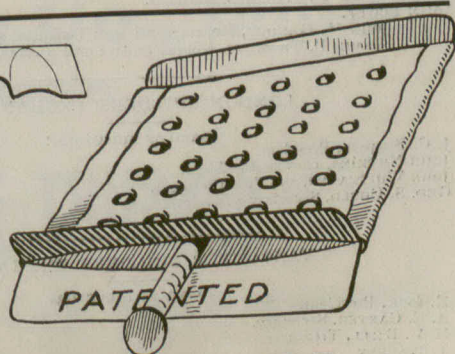
Works and Head Office: MILTON, ONT.

Montreal Agents: T. A. MORRISON & CO., 204 St. James Street.



(Steel) WALL TIE (Galvanized)

TWO well-known articles approved and specified by all architects. Wall Plugs, used instead of bond timber to nail strapping or furring strips to Wall Ties, used in hollow and solid walls to tie the bricks. Cheaper than the old method. Give them a trial and we feel sure you will be pleased with their cheapness and usefulness. Further particulars will be gladly given. Write us. Be sure and ask for "Empire" Wall Plugs and Ties.



Empire Machine & Metal Stamping Company, Limited  
For Sale at all Hardware Stores. 1012 Yonge Street, TORONTO

(Steel) WALL PLUG (Japanned)

—THE—

CANADIAN ARCHITECT AND BUILDER

A Monthly Journal of Modern Constructive Methods,

(With a Weekly Intermediate Edition—The CANADIAN CONTRACT RECORD).

PUBLISHED ON THE THIRD WEDNESDAY IN EACH MONTH IN THE INTEREST OF ARCHITECTS, CIVIL AND SANITARY ENGINEERS, PLUMBERS DECORATORS, BUILDERS, CONTRACTORS, MANUFACTURERS OF AND DEALERS IN BUILDING MATERIALS AND APPLIANCES.

The C. H. MORTIMER PUBLISHING CO. of Toronto, Limited.

Publishers,

Confederation Life Building, - TORONTO, CANADA.

Telephone Main, 2362.

Branch Offices:

IMPERIAL LIFE INSURANCE BUILDING, MONTREAL.  
Bell Telephone 2299.

22 GREAT ST. HELEN'S, LONDON, E.C.

SUBSCRIPTIONS.

THE CANADIAN ARCHITECT AND BUILDER will be mailed to any address in Canada or the United States on the following terms: Architects' Edition, \$3.00 per year; Regular Edition, \$2.00 per year. The price to foreign subscribers is: Architects' Edition, 16 shillings; Regular Edition, 12 shillings. Subscriptions are payable in advance. The Journal will be discontinued at expiration of term paid for, if so stipulated by the subscriber; but where no such understanding exists, will be continued until instructions to discontinue are received and all arrears of subscription paid.

ADVERTISEMENTS.

Prices for advertisements sent promptly on application. Orders for advertisements should reach the office of publication not later than the 12th, and changes of advertisements not later than the 5th day of the month.

EDITOR'S ANNOUNCEMENTS.

Contributions of value to the persons in whose interest this journal is published are cordially invited. Subscribers are also requested to forward newspaper clippings or written items of interest from their respective localities.

Subscribers who may change their address should give prompt notice of same. In doing so, give both old and new address. Notify the publishers of any irregularity in delivery.

ONTARIO ASSOCIATION OF ARCHITECTS.

OFFICERS FOR 1903.

PRESIDENT - W. L. SYMONS, Toronto  
1ST VICE-PRESIDENT - GEO. W. GOINLOCK, Toronto  
2ND VICE-PRESIDENT - PROF. C. H. C. WRIGHT, "  
TREASURER - A. R. DENISON, "  
REGISTRAR - W. R. GREGG, 94 King St., Toronto.

COUNCIL:

EDMUND BURKE - Toronto  
LAWRENCE MUNRO - Hamilton  
JOHN GEMMELL - Toronto  
HENRY SIMPSON - "  
J. W. SIDDALL - "

PROVINCE OF QUEBEC ASSOCIATION OF ARCHITECTS.

OFFICERS FOR 1903.

PRESIDENT - W. E. DORAN, Montreal.  
1ST VICE-PRESIDENT - J. P. OUELLET, Quebec.  
2ND VICE-PRESIDENT - J. S. ARCHIBALD, Montreal.  
SECRETARY - PROF. S. H. CAPPER, Montreal.  
TREASURER - A. H. LAPIERRE, Montreal.

COUNCIL.

JOS. VENNE - Montreal.  
H. STAVELY - Quebec.  
A. RAZA - Montreal.  
D. R. BROWN - Montreal.  
J. W. CARMICHAEL - Montreal.  
J. E. VANIER - Montreal.

AUDITORS—L. A. AMOS AND JOS. SAWYER.

TORONTO BUILDERS' EXCHANGE.

BOARD OF DIRECTORS:

JOSEPH RUSSELL, President.  
R. G. KIRBY, 1st Vice-President.  
JOHN HOIDGE, 2nd Vice-President.  
DAVID WILLIAMS, Treasurer.  
MESSRS. CLAY AND HOLMES, Auditors.  
JOHN SCOTT.  
JOHN M. GANDER, Representative on Technical School Board.  
JAMES B. THOMSON, Representative on Exhibition Board.

MESSRS. NELSON  
WELLER.  
CRANG.  
MARTIN  
SMALLWOOD.  
LOGAN.

LONDON BUILDERS' EXCHANGE

BOARD OF DIRECTORS:

J. C. SIMPSON, President.  
JOHN NUTKINS, 1st Vice-President.  
JOHN WHITTAKER, 2nd Vice-President.  
GEO. S. GOULD, Secretary-Treasurer.

WM. TYTLER.  
THOS. JONES.  
ED. MARTYN.  
GEO. YOUNG  
S. STEVELY.

VANCOUVER BUILDERS' EXCHANGE.

BOARD OF DIRECTORS

E. COOK, President.  
A. E. CARTER, Secretary.  
H. A. BELL, Treasurer.  
T. BRADREV

C. P. SHINDLER  
K. M. FRASER.  
E. G. BAYNES.  
D. SAULT.

WINNIPEG MASTER CARPENTERS' ASSOCIATION

BOARD OF DIRECTORS

A. MacDONALD, President.  
A. G. AKIN, 1st Vice-President.  
A. SUTHERLAND, 2nd Vice-President.  
A. McCORMICK, Secretary.  
J. G. LATIMER, Treasurer.

MASON BUILDERS' EXCHANGE.

BOARD OF DIRECTORS:

D. D. WOOD, President.  
W. F. LEE, 2nd Vice-President.  
EDWARD CASS, Treasurer  
D. T. JACKSON.  
J. MALCOM.  
A. N. McCUTCHEON, 1st Vice-President.  
A. T. DAVIDSON, Secretary.  
WILLIAM ALSIP.  
ANGUS BROWN.

MONTREAL BUILDERS' EXCHANGE.

BOARD OF DIRECTORS:

C. T. WILLIAMS, President.  
W. F. HUGHES, Vice-President.  
G. J. SHEPARD, Secretary-Treasurer.  
JOHN WIGHTON.  
H. R. IVES.  
JAMES PATON.  
N. T. GAGNON.  
JOSEPH LAMARCHE

CHAMBRE SYNDICATE DE LA CONSTRUCTION.  
(French Builders' Exchange.)

8 St. James Street, Montreal.

BOARD OF DIRECTORS:

J. B. GRATTON, President.  
G. MENARD, 1st Vice-President.  
T. CHARPENTIER, JR., 2nd Vice-President.  
ALCIDE CHAUSSE, Treasurer.  
N. T. GAGNON, Secretary.  
FELIX SAURAGEAU.  
L. Z. MATHIEU.  
H. CONTANT.  
E. Z. COTE.  
LOUIS PAYETTE.

VICTORIA BUILDERS' EXCHANGE, VICTORIA, B. C.

BOARD OF DIRECTORS:

W. D. MCKILLICAN - Chairman  
E. W. WHITTINGTON - Secretary  
THOS. CATTERALL - Treasurer

NOTES.

The price of bricks in Vancouver has recently been advanced by \$2.00 per thousand, the price now being \$11.00.

At the Dominion Fair and in fairs throughout the country the Dunlop exhibit of rubber mats, rubber tiling and rubber flooring, was a particularly interesting display for house owners and house builders. The company have introduced many new features both in designs and material. Their new catalogues are now out and are worth investigating.

**DON VALLEY BRICK WORKS**  
TORONTO

**ROBERT DAVIES, PROP.**  
MANUFACTURER OF  
FINE GRADE PRESSED BRICKS,  
IN ALL COLORS & DESIGNS.  
ENAMELLED BRICKS.  
VITRIFIED PAVING BRICKS.  
ARCHITECTURAL & POROUS TERRA-COTTA.

## A DEPARTURE IN HOT AIR HEATING.

Our readers will no doubt be interested in the paper printed in this issue by Dr. George M. Aylsworth, of Collingwood, describing a new method of heating, of which he is the inventor. In Dr. Aylsworth's system hot air is circulated through pipes and specially constructed radiators in the same manner as hot water is employed in hot water heating systems. The system is a distinct departure from the methods at present in use, and on that account alone is interesting. It remains to be seen whether in actual every day practice, it will fulfil the expectations of the inventor. In some rather severe tests which have already been made of the system by the inventor, it is said to have proved satisfactory. We would be pleased to publish the opinions of any of our readers with regard to this system.

## WIRING METHODS AND MATERIAL.

We have previously had occasion to call attention to the crying need for improvement in the way in which electrical machinery and wiring is often installed, but the frequency with which cases of criminally careless work come to light, let alone those which at the best are but botchwork, would seem to indicate that the matter is in many cases being entirely lost sight of. As an example we would cite an installation which recently came under our notice in which a 2200 volt line was carried into the basement of a building, no lighter and no dryer than basements usually are, with ordinary weatherproof wire, run on knobs. At several points it had been necessary to insert connectors, parts of which extended to within two or three inches of each other and were not even taped over, notwithstanding that they were within easy reach of anybody passing, being but four or five feet from the floor. Further than this, ordinary lead composition fuse wire, bare, was in use. Compare the above with a proper equipment of rubber wire and enclosed fuses, the former run in conduit and the latter with their necessary connectors and mountings boxed in cabinets, and you will have some idea of its shortcomings. At another installation, a woollen mill, with its usual contents of highly inflammable material occupying all parts of the building, to say nothing of the lint and dust which invariably accompany such processes, there was found the old familiar open lead fuse, some in cutouts with porcelain covers and some without even this slight protection. This meant that the blowing of one of them was almost certain to ignite the pile of material immediately below it, with ultimate results which can easily be imagined. Proper enclosed fuses, installed in cabinets, would have cost but a trifle more and would have made a fire of

electrical origin a remote possibility, instead of a large probability. Is it any wonder that when work such as found in the above instances is allowed to be put in, that the uninformed public, and for that matter, many who claim to be well posted, look askance at the proposal to introduce electric power. In the former of these cases the installation was a positive menace to life, and both offered every chance for a severe fire.

## NOTES.

Under the direction of the Montreal Industrial Exhibition Association arrangements are being made to hold an important exhibition and fair in the city of Montreal in 1904.

An exhibit of Canadian building stone from the collection of the Geological Survey of Canada, was one of the interesting features of the recent Dominion Exhibition in Toronto.

The Allith Manufacturing Company have leased the building formerly occupied by Leitch & Turnbull at Hamilton, Ont., and will engage in the manufacture of track door hangers and other kinds of hardware.

With the aid of a ginpole, instead of derricks or travellers, for hoisting materials, Chas. T. Caldwell, of Columbus, Ind., is said to have made a record for rapid construction on the St. Louis Fair Grounds. Within fifty days he is said to have completed the Agricultural Building, 1800 feet long by 600 feet wide.



The most artistic and durable color effects on shingles are produced with Shingletint, which is a scientific combination of linseed oil, coloring matter, creosote, and the necessary drying agents.

Among the many shingle stains offered Shingletint is conspicuous not only for its superiority but because it can be called for by its distinctive name, thus offering the consumer protection against inferior goods offered for the same purpose.

When buying Shingle Stains it will be worth while to ignore the "just as good" argument and insist upon Shingletint.

Stained woods and descriptive literature sent free upon request.

Most saleable and profitable line for the dealer. Write for our prices.

**Berry Brothers, Limited**  
WALKERVILLE, ONT.

Manufacturers of every grade of Varnish and Japan for every use known.

# The Canadian Bridge Co., Limited

## Walkerville, Ontario.

... MANUFACTURERS OF

## STEEL BUILDINGS, ROOF TRUSSES

Railway and Highway Bridges and Structural Steel and Iron Work of all descriptions

Estimates furnished upon application.



BY THE WAY.

The theory that lightning never strikes twice in the same place has again been disproved. The new municipal buildings, Toronto, the tower of which was partially destroyed by lightning last year, was again struck last month. The damage was but slight, however, only one stone being displaced.

x x x

Notwithstanding loss of commissions as the result of building projects being blocked by recent strikes, some architects whose offices had for months been crowded with work, and who had consequently been compelled to work early and late were disposed to welcome the interruption as affording them opportunity for needed rest. However, a shorter period than three months would have sufficed for this purpose.

x x x

Before the Court of Revision in Toronto the other day an appeal was made by the owners of two of the

largest office buildings in the city for a reduction of assessment. One of the reasons urged in behalf of this appeal was that the revenue from these buildings netted the owners only two and one half per cent. on their investment. If this statement be accurate, it must tend to discourage investment in real estate of this character.

x x x

Bow church, to the Rectory of which Mr. Hutton, the late librarian of the National Liberal Club, is being instituted, possesses what Darwinists would call a "survival," says the Westminster Gazette. This is the curious balcony beneath the clock, which represents the medieval tower from which the Court witnessed the tournaments in Cheapside. It was originally a wooden structure, which on one occasion collapsed, so that Queen Philippa and all her ladies "fell with great shame" on the heads of the assembled knights. Jerry building was discouraged in those brave days, and the careless carpenters were ordered to be executed. The royal balcony was last used by Queen Anne in the first year of her reign at a "pageant" devised by the "City Poet," Elkanah Settle.

Of the 5,000 Sets Purchased by us 60 Days Ago  
**ONLY 980 SETS ARE LEFT.. ORDER AT ONCE**

IF YOU WANT THEM AT OUR SPECIAL INTRODUCTORY PRICE. We have sold just 4020 Sets of this Valuable Work in LESS THAN SIXTY DAYS.

Carpenters, Builders, Machine Wood Workers, Stair Builders, Planing Mill Men or Apprentices, can you afford to be without these books and remain behind the times in performing your work? We don't believe you will or can. The

**Carpenters' and Builders' Standard Library**

BY FRED T. HODGSON

Each volume a veritable gold mine of up-to-date information for the architect, contractor, carpenter, mechanic and apprentice, or anyone who would work with wood. These volumes have been published since September, 1922, and must not be mistaken for Mr. Hodgson's former works which were published some twenty years ago.

Near y 1200 Pages and 1200 Fine Illustrations Showing Every Working Example



HALF MOROCCO STYLE  
TITLES

**MODERN CARPENTRY AND JOINERY**

280 Pages  
Over 300 Illustrations  
Cloth, Retail Price \$1.00  
Half Morocco \$1.50

**CO-MON SENSE HAND-RAILING**

280 Pages  
250 Illustrations  
Cloth, Retail Price \$1.00  
Half Morocco \$1.50

TITLES  
**PRACTICAL USES OF THE STEEL SQUARE**

**PART 1** Over 280 Pages  
300 Illustrations  
Cloth, Retail Price \$1.00  
Half Morocco \$1.50

**PRACTICAL USES OF THE STEEL SQUARE**

**PART 2** Over 280 Pages  
300 Illustrations  
Cloth, Retail Price \$1.00  
Half Morocco \$1.50



CLOTH STYLE

**SPECIAL OFFER TO THE READERS OF THE CANADIAN ARCHITECT AND BUILDER**

**SPECIAL** Introductory Price, Complete, Set of Four Volumes, Cloth, only \$2.40  
Price, Complete, Set of Four Volumes, Half Morocco, only 3.75  
Introductory Price, Single Volumes, Cloth, each .65  
Introductory Price, Half Morocco, each 1.00

We recommend the Half Morocco Edition for durability.  
Postage Extra, per Volume, 10c.

Postage Extra, per set, 40c.

All Sent to Any Address upon Receipt of Price and Extra Postage

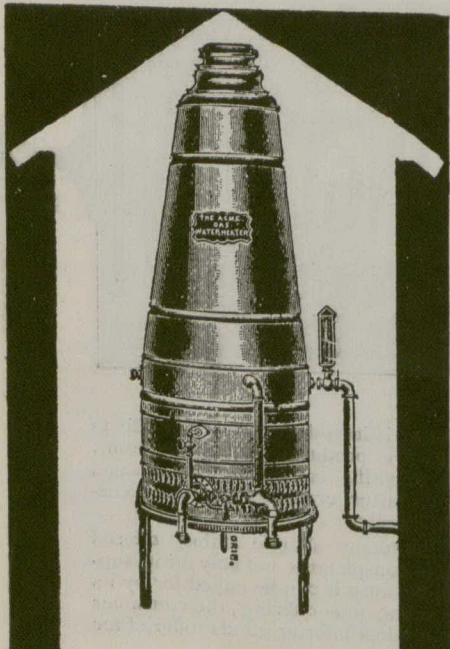
This series of Fred T. Hodgson's new works are to-day the approved and most helpful set of practical builders' "educators" published. They have been tried and found by architects, contract ors, carpenters and builders to be efficient "aids" for advancement and thoroughly reliable for daily consultation as books of reference, covering as they do thousands of "self-help-points" necessary for all workers of wood.

The books are positively up-to-date and we most heartily recommend them to everyone as the most valuable series of books for self-instruction published in the world on the subjects treated.

**THIS OFFER WILL EXPIRE WHEN THE 5,000 SETS ARE SOLD. AFTER THAT, THE BOOKS CAN ONLY BE HAD AT THE RETAIL PRICES.**

If you want a prospectus which gives the full contents of this valuable work write us for it. Sent Free. Send Post Office or Express Money Order to avoid delay. Your money will be cheerfully refunded if the books are not as represented. Address all orders to

**The HODGSON BOOK COMPANY**  
211 EAST MADISON STREET CHICAGO  
The Hodgson Book Co. are reliable.—The Editor.



Every house should be fitted with one of our instantaneous water heaters.

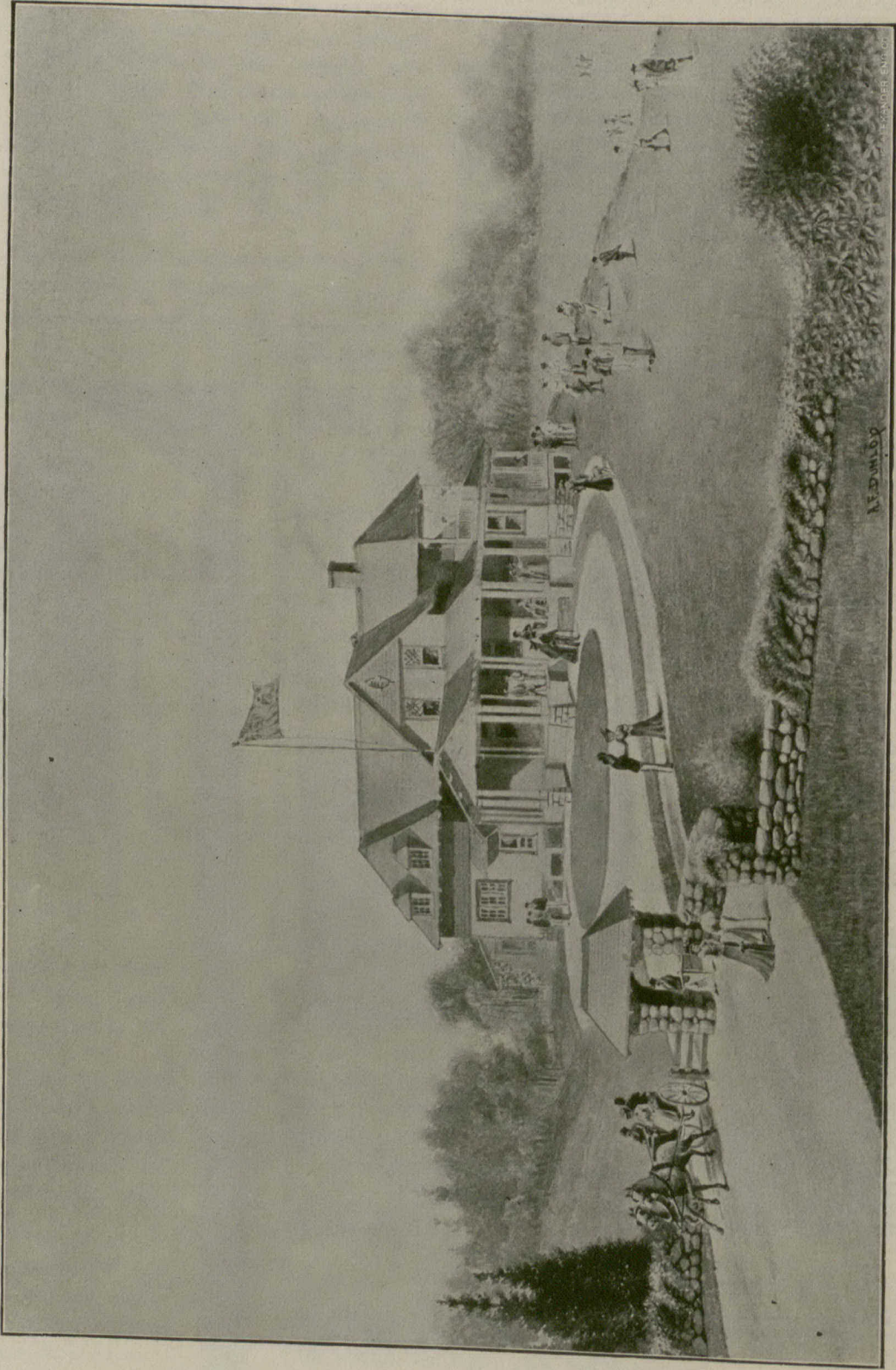
These heaters are practically indispensable as they provide hot water as wanted on an instant's notice, and are free from soot, smoke and smell.

They cost but a trifle to run and are so neat and compact that they add to the finished appearance of any house.

Send for catalogue to-day.

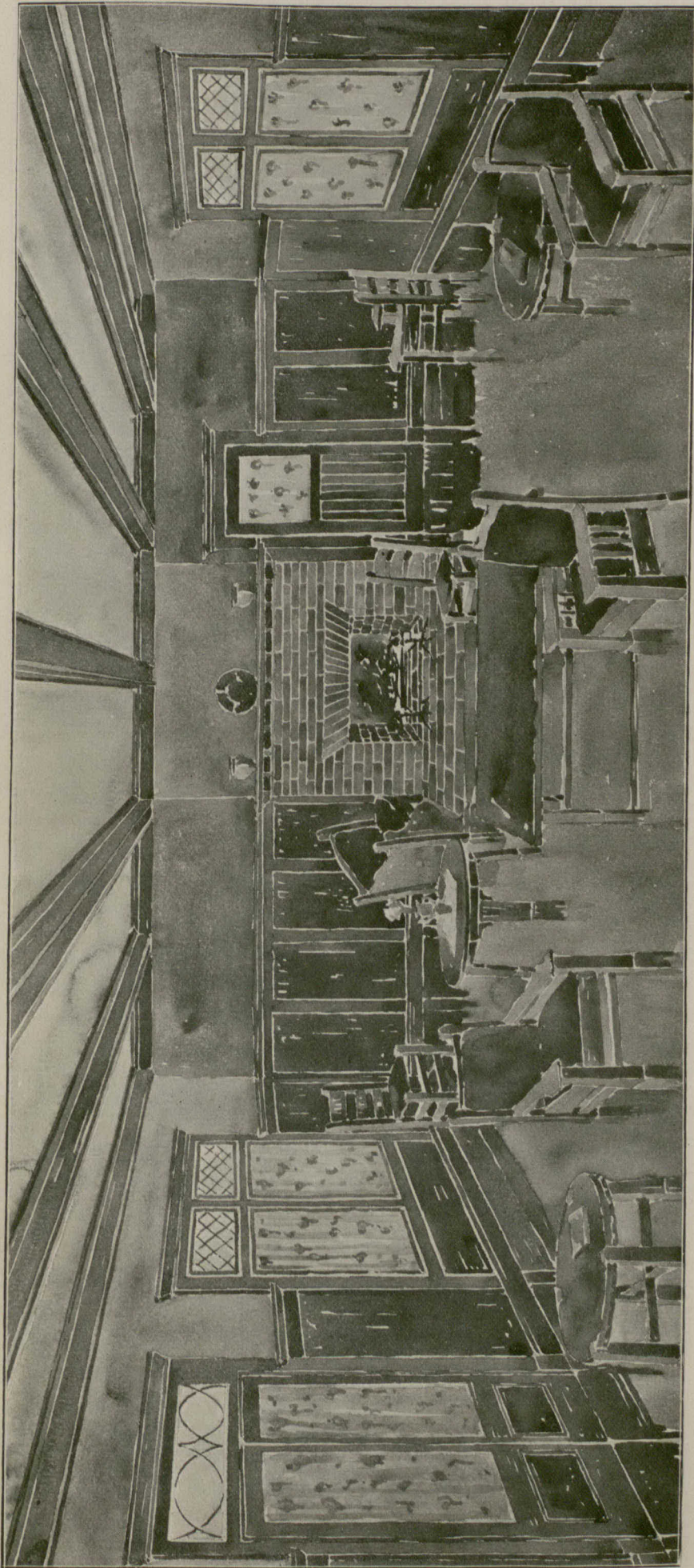
**The Jas. Morrison Brass Mfg. Company, Limited**  
Toronto, Ont.

J.M.T



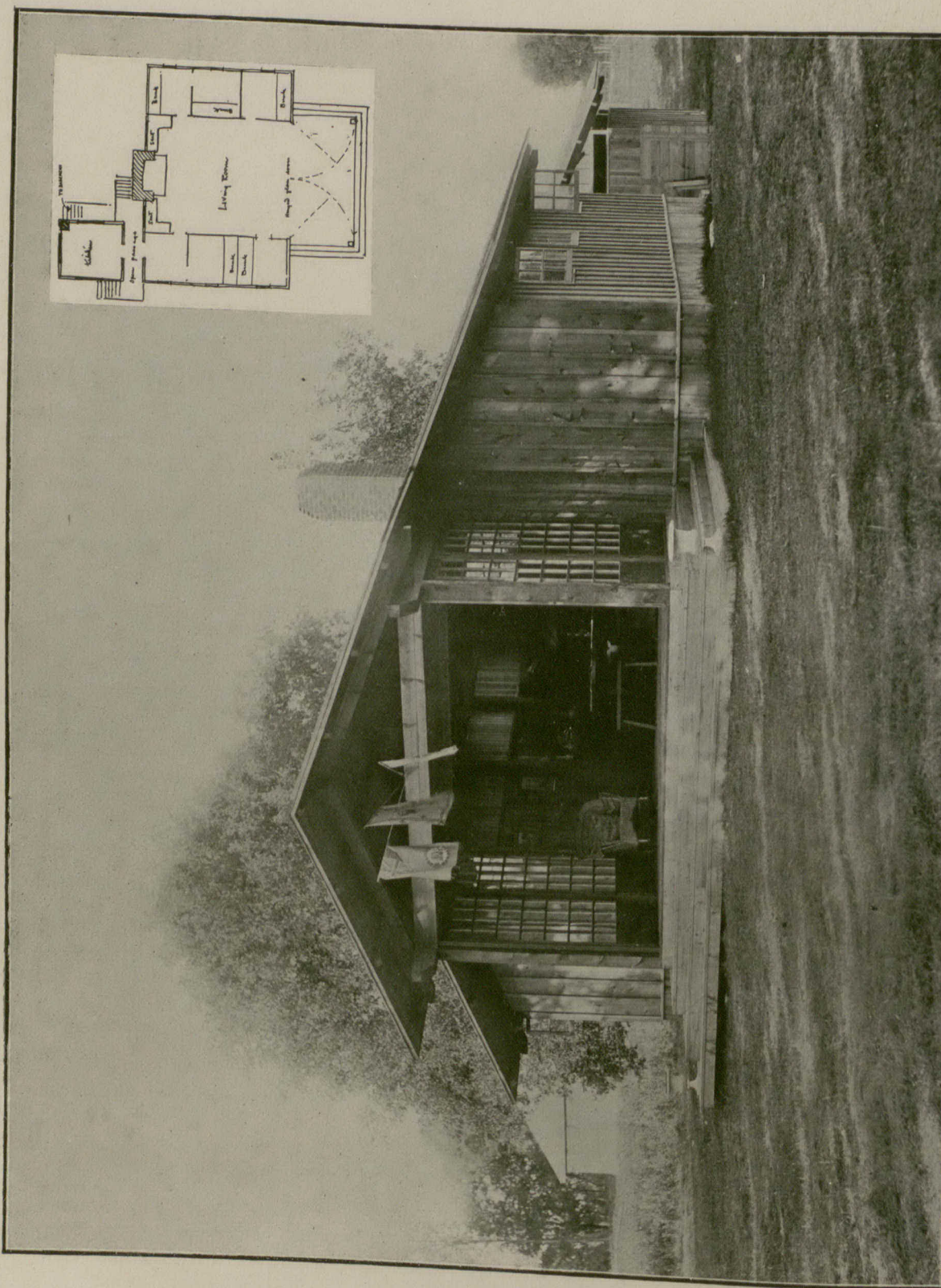
GOLF CLUB HOUSE, NEAR MONTREAL, QUE.

A. F. DUNLOP, ARCHITECT.



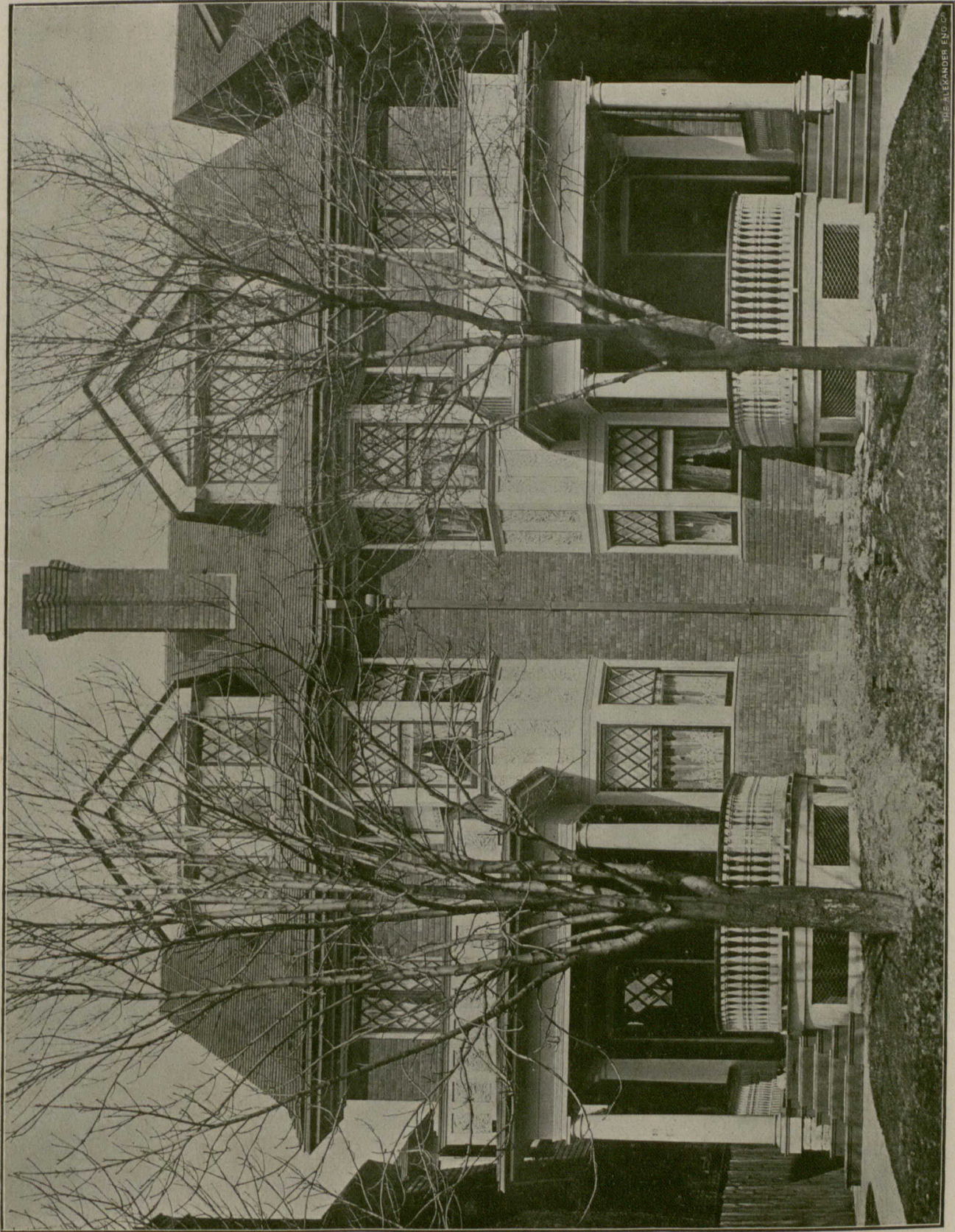
INTERIOR OF GOLF CLUB HOUSE, NEAR MONTREAL, QUE.

A. F. DUNLOP, ARCHITECT.



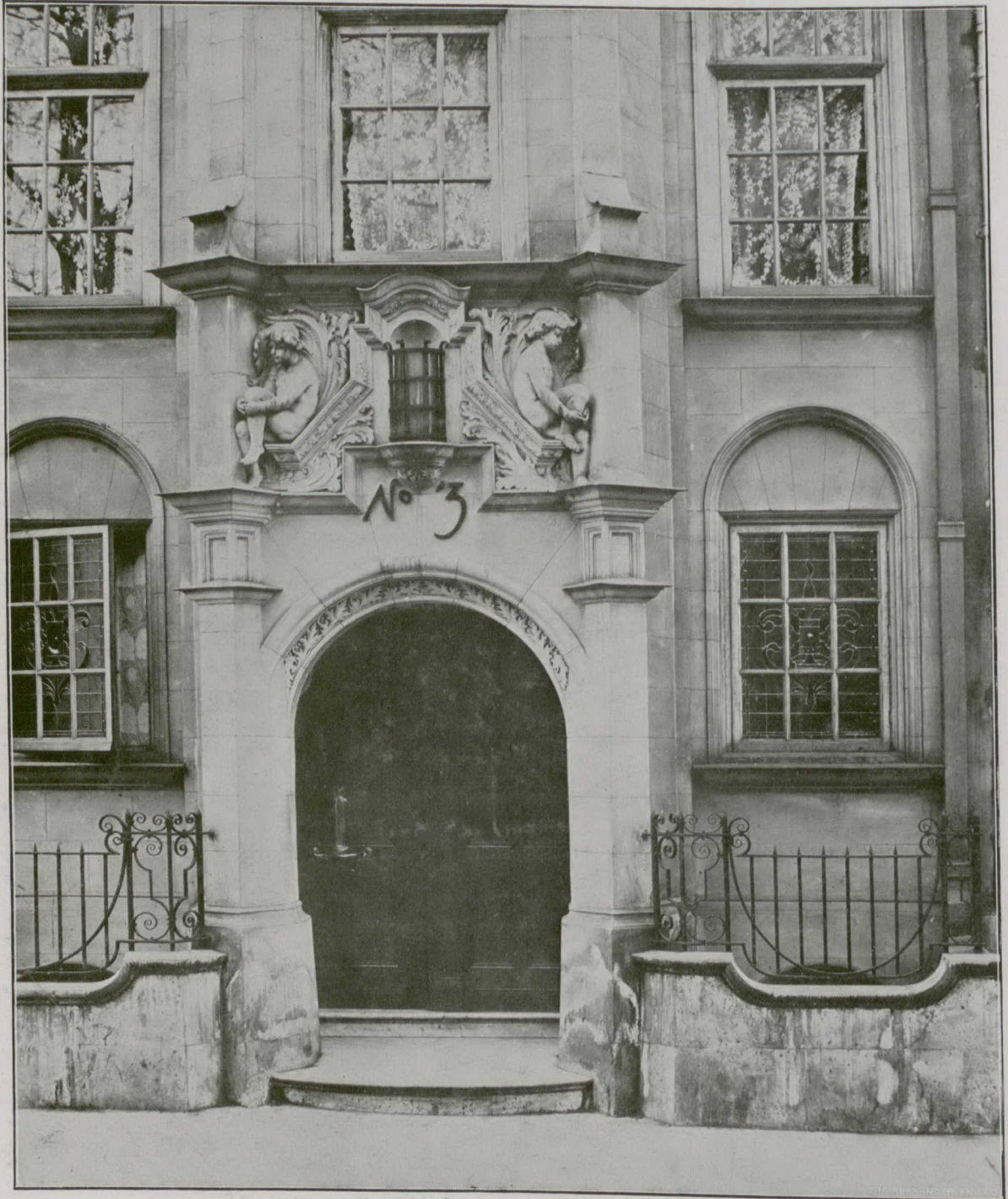
SUMMER HOUSE AT ST. JAMES, NEAR WINNIPEG.

(For description see North-West letter in this Number.)

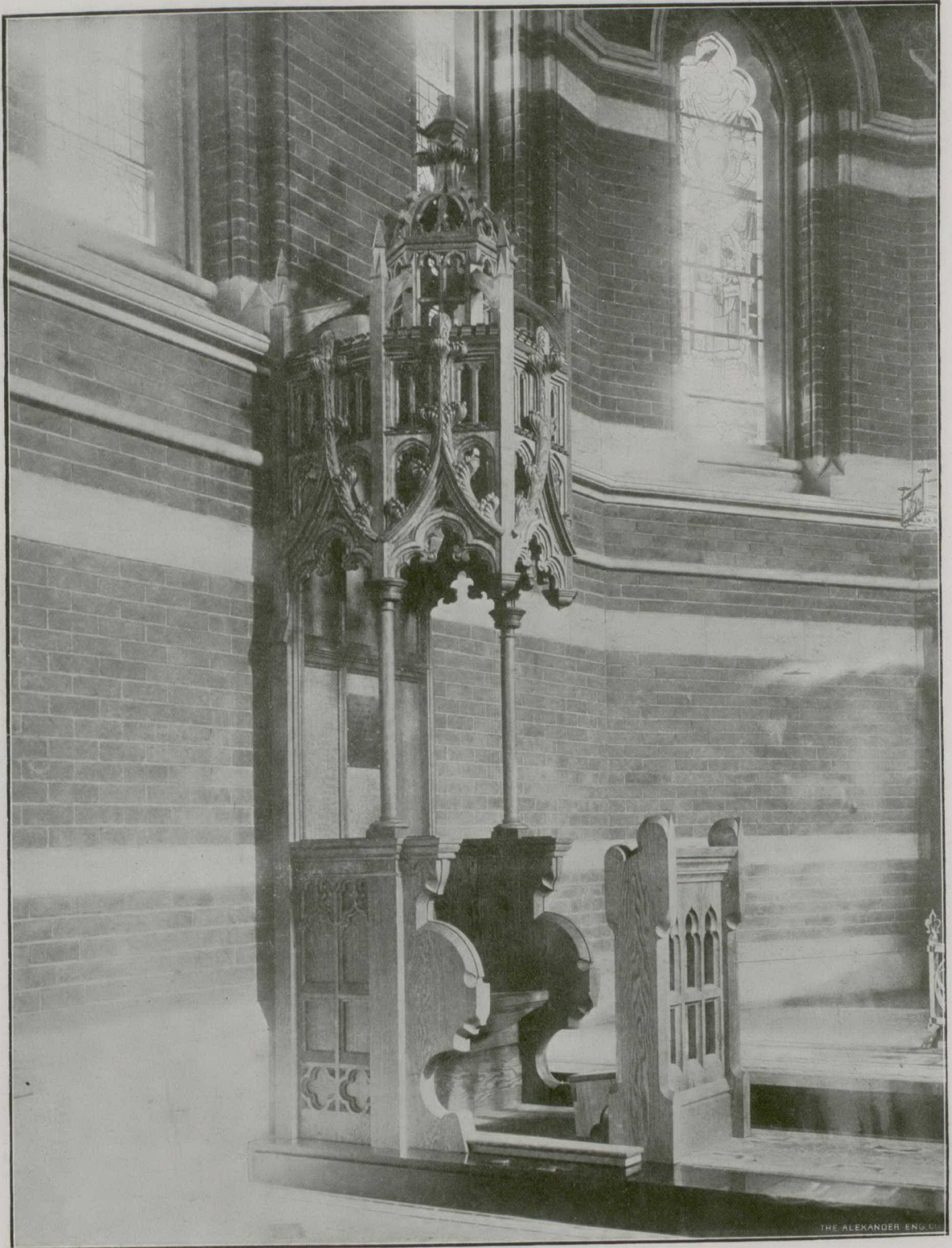


HOUSES, NOS. 348 AND 350 ELGIN AVENUE, TORONTO.  
CHADWICK & BECKETT, ARCHITECTS.

THE ALEXANDER EGG CO.



ENTRANCE, No. 3 BERKELEY SQUARE, LONDON, ENG.



BISHOP'S CHAIR, TRINITY COLLEGE, TORONTO.

EDEN SMITH, ARCHITECT.

PERSONAL.

A pioneer builder of Toronto passed away last month in the person of Mr. William Carlyle. The late Mr. Carlyle was a native of Dumfriesshire, Scotland, and had been a resident of Toronto since 1849. He retired from the building business about 20 years ago. He was for many years a member of the city council, and for six years chairman of the board of works.

Professor S. H. Capper, formerly at the head of the Architectural Department of McGill University, is about to commence his duties as Professor of Archaeology and Architecture at Owen's College, Manchester. He was tendered a farewell reception by the officers and members of the Montreal 3rd Field Battery, in which he holds the rank of captain. It is learned that Professor Percy R. Nobbs, of London, England, has been appointed Professor in Architecture at McGill University, in succession to Prof. Capper, and is expected to arrive from England shortly.

NOTES.

A company to be known as the Cement Building Block Company has been organized at Winnipeg to manufacture hollow concrete building blocks.

The new Board of Trade building in Montreal was formally opened last month by Lord Strathcona in the presence of a large gathering of business men. The building was artistically decorated for the occasion.

Mr. J. B. Duffy, of Chicago, recently interviewed the Minister of Customs at Ottawa with the object of endeavoring to have the duty on roofing tile made to correspond with the duty on roofing slate. The existing duty on roofing tile is 35 per cent. ad valorem and on roofing slate 75 cents per 100 square feet.

Canada's annual trade with Belgium amounts to \$1,600,000. Among our principal imports from that country are Portland cement to the value of \$119,000, window and plate glass, value \$586,000, and metal goods \$286,270. Our exports include lead, ore, asbestos, lime and other mineral substances to the value of \$371,000.

Mr. T. Stirling Lee, a well-known English sculptor, has been

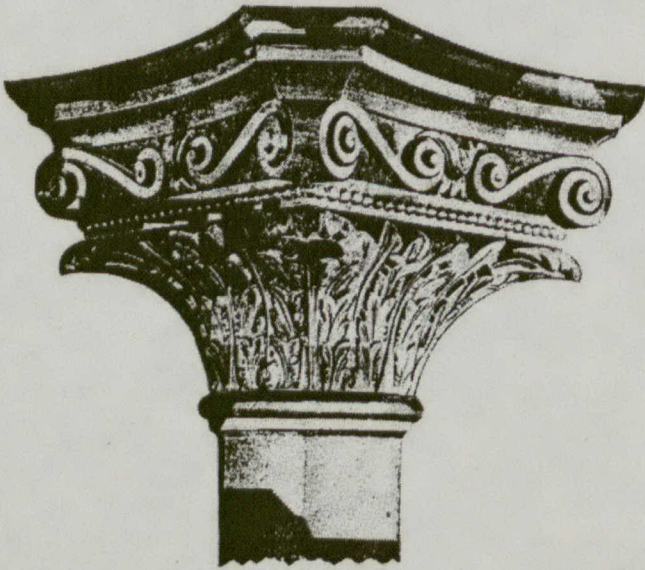
engaged to execute twelve figures to be placed above the panels on the principal facade of St. George's Hall, Liverpool. This commission has been given as a step in the direction of the completion of the building. Mr. Lee in a letter to the English architectural journals points out that when this important building was erected, the designer contemplated the use of a number of sculptured symbolical figures, for which places were provided, but the figures have never been supplied. The sculptor urges the gradual completion of the building according to the ideas of the designer, thereby making this the grandest modern building in Europe.

At the recent Fire Protection Congress, held in London, England, the following resolution was adopted: The Congress considers that having regard to the neglect of precautions against damage caused by lightning, the subject should have the serious consideration of the government and local authorities, the technical professions and the fire service. The owners of a building known as Westminster Chambers erected in Copley Square, Boston, Mass., carried the building to a height exceeding the limit prescribed by law for buildings in this locality. After a lengthy legal fight the city has succeeded in getting a verdict against the owners of the building compelling them to reduce the height of the building to the legal limit.

A proposal is before the city council of Montreal for the appointment of a city architect. The argument is advanced in favor of the proposal that by its adoption the city would save money and secure uniformity in the style of its public buildings. The opinions of local architects differ with regard to the matter. Some hold the view that there might be some advantage if the appointment were based on merit alone, and the salary made sufficient to secure the services of a first-class architect. Doubt prevails, however, as to whether either of these essentials would be realized. The reason why better results are not obtained under the present system is said to be that the work does not go to the best architects but to those having the greatest "pull." The suggestion is made that it would pay the city to engage a first-class advisory architect to pass upon all plans for city buildings.

# ORNAMENTAL CAST IRON DETAILS

NOTHING TO TARNISH—ALWAYS AS GOOD AS NEW



DESIGN NO. 728

Ornamental Capitals for Round and Square Pillars of numerous designs.

Name Tablets, False Hinges, Seat Ends, Cast Iron Ornaments for decoration purposes.

ALSO

Hand Hammered Iron Work of every description.

Send for Bulletin No. 21

## Canada Foundry Company, Limited

Head Office and Works: Toronto, Ont.

District Offices: Montreal Halifax Ottawa Winnipeg Vancouver Victoria Rossland



NOTES.

A City Improvement Society has been organized at London, Ont., with the object of improving the appearance of the streets.

A charter has been granted by the Ontario Legislature to the Belleville Portland Cement Company, Limited, capital \$2,500,000, to manufacture and deal in Portland cement, bricks, lime, drain tiles, stone and gravel, artificial stone, etc.

Mr. Harry McIntosh, of Point Edward, Ont., has recently invented and patented a machine which is said to be capable of producing the finest quality of pressed brick at the rate of 2,000 per hour. The machine is said to be in operation at Point Edward and Warton, Ont.

The new Metropolitan Bank building at corner of Dundas and Arthur streets, Toronto, is attracting attention. The stone used is that manufactured by the Roman Stone Co., Mariborough Avenue, under their patented process, and is certainly all that the company claim for their material.

An artistically gotten up brochure treating of the history, manufacture and characteristics of stained glass, and containing twenty plates showing examples of important works in this line, has been published by Thomas William Camm, The Studio, near Manchester, England. The author is in the front rank of designers and manufacturers of stained glass in England.

A shipment of Canadian clay was recently made from Toronto to England to determine its suitability for the manufacture of pottery. The experiments made with brown clay by experts in the pottery district in England are said to have demonstrated its peculiar value for sanitary ware, owing to the extreme closeness of the grain and its non-absorbent qualities. From another variety of clay vitrified bricks were produced of a durability superior to those made from English clay.

Canadian manufacturers of heating apparatus are finding in the Northwest a profitable market for a large amount of apparatus in this line. The climate is such that more than ordinary attention must be given to heating methods and appliances, while the rapid increase in population is widening the market every year. The prosperous conditions which have prevailed in the Northwest, as well as in every part of Canada, for several years past, have put the people in possession of means with which to make themselves comfortable, and large expenditures are being made for this object. The manufacturers of heating apparatus claim that better prices are obtainable in the Northwest than in Eastern Canada. They also state that, notwithstanding the mildness of the climate in British Columbia, there is a considerable demand for heating appliances in that province. In view of the rapidly widening market, several manufacturing firms are increasing their facilities for the production of this line of goods.

The Sun Portland Cement Company, Limited, Owen Sound

MANUFACTURERS OF

The Sun Brand A High Grade Portland Cement

Suitable For All Purposes

ASK US FOR QUOTATIONS

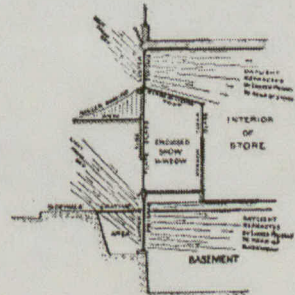
JAS. A. CLINE, Managing Director



Genuine Luxfer Prisms

ARE SUCCESSFUL—  
Imitations Are Failures.

For Scientific Lighting of dark premises, write to us for expert work.



Luxfer Prism Company, Limited,  
100 King Street West, Toronto

# The Hobbs Manufacturing Co., Limited

LONDON, - CANADA.

IMPORTERS

Sheet Window Glass, Muffled and Cathedral Tints. Ornamental Figured Glass,  
Polished British Plate, Rolled Plate Glass, Prismatic Sheet Glass.

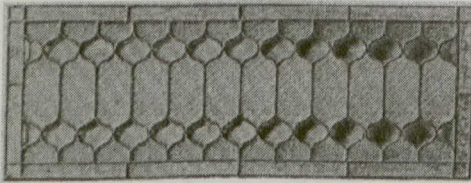
MANUFACTURERS

Church and Cathedral Leaded Windows, Domestic Art Stained Glass,

Bevelled Plate and Mirrors, Ceiling and Finer Plates, Memorial and Portrait Windows,  
Chipped, Obscured and Enamelled, Mitred and Sand Cut, Paper Weights and  
Advertising Signs, Electro Glazed Art Glass and Ornamental Prismatic Glass.

## Electro Glazed Art Glass

Not a cheap imitation of copper plate, not a dull flat finish, but Electro Glazed with a solid deposit of copper and a bright clear polished copper finish.



No. 632



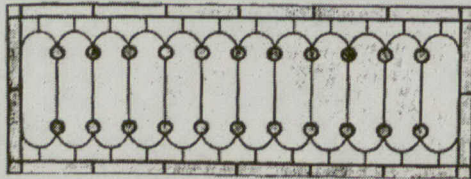
No. 521



No. 635



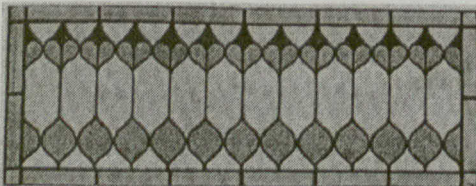
No. 522



No. 630



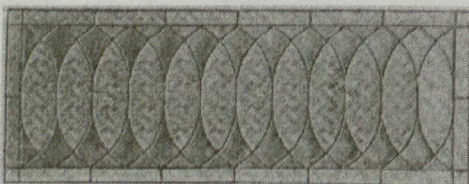
No. 523



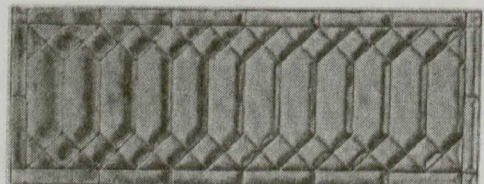
No. 631



No. 520



No. 633



No. 623

WE CARRY A LARGE STOCK OF WINDOW GLASS QUALITY THE BEST. PRICES ARE RIGHT.  
WE MANUFACTURE AND IMPORT EVERYTHING IN GLASS REQUIRED FOR BUILDINGS.

*Write for Catalogue and Prices.*

## British Trade Supplement

The Publishers of "The Canadian Architect and Builder" have arranged to furnish information respecting British Exporters of Building Materials and their goods advertised in this paper, and will keep on file at their Offices, Imperial Building, Montreal, and Confederation Life Building, Toronto, Catalogues, Price Lists, Etc.

Catalogues will be forwarded to Architects and Building Supply Houses in Canada on application.

British Office: 22 Great St. Helen's, LONDON, E. C.



### Colledge & Bridgen

Midland Lock Works,  
Wolverhampton, England.

Sole Makers of the

## "PERFECT"

Patent Door Spring

Over 10,000 in Use.



## GÜNTHER WAGNER'S CHIN-CHIN AND PELICAN WATERPROOF DRAWING INKS

FOR SALE BY ALL DEALERS.

Inventor and Manufacturer:

### Günther Wagner

10 LONDON WALL

LONDON, E. C., ENG.

**THE MALKIN TILE WORKS CO. LTD**  
ESTABLISHED 1866 **BURSLEM ENGLAND**  
SPECIALITIES IN FLOOR WALL & HEARTH TILES  
ARCHITECTS & BUILDERS PLEASE WRITE FOR NEW CATALOGUE

For Prices for Advertisements  
in this Supplement write  
The G. H. Mortimer Publishing  
Co., of Toronto, Limited  
22 Great St. Helens,  
London, E.C., Eng.

### GEORGE WOOLLISCROFT & SON, LIMITED

Hanley, Staffs, England

Will be pleased to receive enquiries from Canadian friends for their numerous manu-  
factures, which include:

Tiling Mosalcs Faience and Terra Gotta

Roof, Floor and Wall. Floor and Wall. For Internal or External Decoration

Faience and Briquette Fireplaces. Sanitary Goods.

Red and Blue Staffordshire Goods of Every Description

**CHURCH DECORATION** done in all its branches. Stained Glass, Wood Carv-  
ing, Marble and Iron Work, Fresco Painting, Della Robbia, &c. Venetian and  
Ceramic Mosaics for Walls or Floors.

Write for Catalogue. While waiting for catalogues from England  
friends may inspect same at the office of this paper, viz: The G. H. Mor-  
timer Publishing Co., Imperial Building, Montreal, and Confederation  
Life Building, Toronto.

Our London Office and Showrooms are at  
76a Great Portland Street Oxford Circus W.



## FLORITE · OPAL · TILING

### THE PERMANENT DECORATIVE GLASS CO. LTD

LONDON · MANCHESTER & LANCASTER.

THE NEW ENAMEL WALL DECORATION SUPERSEDING ORDINARY TILES AND OTHER GLAZED SURFACES

**SANITARY · WASHABLE · PERMANENT · MODERATE COST**

Wall Decorations · DADOS · FRIEZES · BORDERS · PATTERN TILES · PANELS · PICTURES

PLAIN WHITE & COLORS · MARBLE · GRANITE · MOTTLED LACE & OTHER PATTERNS

EASILY FIXED WITH PLASTER ON ANY ORDINARY WALL SURFACE

CABLE - FLORITE · LANCASTER · ENGLAND

POSTAL ADDRESS - LANCASTER · ENGLAND

**British Trade Supplement**

**JOHN WARNER & SONS, Limited**

BELL AND BRASS FOUNDERS TO HIS MAJESTY THE KING, BY SPECIAL APPOINTMENT.  
2 JEWIN GRESGENT, GRIPPLEGATE, LONDON, ENGLAND

CHURCH BELLS, SINGLY OR IN RINGS  
WESTMINSTER CHIMES  
TURRET CLOCKS  
CHAPEL  
SCHOOL  
COLLEGE BELLS

TELEGRAPHIC ADDRESS



BIG BEN, LONDON.

CLOCK, RAILWAY AND  
LIGHTHOUSE BELLS  
CONTRACTORS TO THE ADMIRALTY  
AND WAR OFFICE  
THE INDIAN, JAPANESE, SPANISH,  
RUSSIAN, SOUTH AUSTRALIAN  
AND OTHER GOVERNMENTS

Illustrated Catalogue, POST FREE.

**MARMOR LIMITED**

Owners of the Ancient Marble Quarries of Greece, at the Pentelikon near Athens,  
at Euboea, Laconia, the Islands of Paros, Skyros, Tinos, Naxos, etc.

**WHITE AND COLORED MARBLES**

of renowned excellence and beauty in great variety.

Depots at Athens, Antwerp, Leghorn, Hamburg, Berlin, Trieste, London, New York, U. S.

CHIEF OFFICE, 18 FINSBURY SQUARE

LONDON, E.C., ENGLAND.

**THE HENRY RICHARDS TILE CO.**  
LONGPORT STAFFS, ENGLAND.

Manufacturers  
of all kinds of

Manufacturers of all kinds of White Glazed, Painted,  
Coloured and Majolica Tiles for Walls, Hearths,  
Stoves, Etc., also all kinds of Flooring and  
Mosaic Tiles.

SANITARY EARTHENWARE,  
CLOSETS, LAVATORIES,  
URINALS, ETC., ETC.

10-10-1

Write for Prices  
Etc.

**EDWARD JOHNS & CO.**

ARMITAGE, NEAR RUGELEY STAFFS, ENGLAND.

**STANLEY BROS., LIMITED**  
NUNEATON, ENG.

Manufacturers of...

White and Colored Glazed Bricks  
Brown and Cane Glazed Sinks

Patent Tiles for Drying Pulp

Quarries, Roofing and Ridge Tiles

Patent Malt Kiln Tiles, Etc.

Illustrated Lists on Application

Enriched Ceilings, Cornices,  
Friezes, Box Fronts, Capitals,  
Columns, Trusses, Mouldings  
and Centre Flowers for Ceilings

—MADE IN—

**FIBROUS PLASTER AND GARTON PIERRE**

Drawings made and estimates given for every  
style of relief decoration for Theatres, Public  
Buildings, Private Houses, etc.

**Geo. Jackson & Sons,**

49 Rathbone Place, LONDON W, ENGLAND

**Lincrusta Walton**

(The Sunbury Wall Decoration)

Solid in Relief.

Solid in Color

Artistic Decorations for Walls and Ceilings. Will  
stand any climate and never wear out.

For Price Lists, Illustrations, Samples, Etc., write to

**Fred<sup>k</sup> Walton & Co., Limited,**

1 NEWMAN STREET, LONDON, W.

Sole Manufacturers and  
Patentees.



New high relief material for Ceilings<sup>s</sup>  
and Friezes, is Firm in Relief and  
Light in Weight.

Beautiful as Plaster at much less cost.  
A large assortment of cheap patterns in  
low relief.

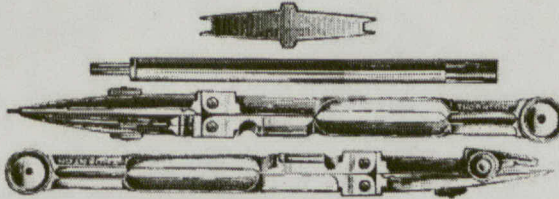
Canadian Agents:

ARTHUR LAURENT, 59 Sous-le-Fort St., Quebec.  
Agent for Ontario and Quebec.  
F. T. BAGSHAVE, Assiniboine Block, Winnipeg.

## British Trade Supplement

# THORNTON'S Improved English Drawing Instruments

6 in. Pen and Pencil  
Compasses, either  
with or without  
Lengthening Bar,  
as  
Illustrated ;



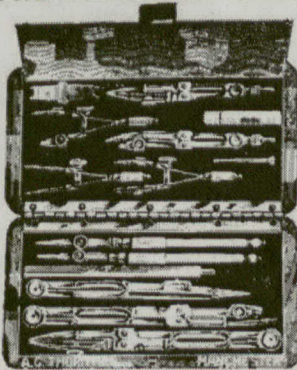
fitted with Thornton's  
Patent Combo Needle  
Points allowed to be  
the best and most  
satisfactory  
yet introduced.

Half Sets from 3s.  
Bows - - 2s.  
Spring Bows 5s. 6d.; set of 3.

Dividers from - - 2s.  
Drawing Pens - 1s.  
Beam Compasses from 9s.

Proportionals, Napiers, Pillars, etc., etc., in great variety.  
Repairs Done Neatly, Expeditiously and at Moderate Rates.

## THE BEAUFORT CASE



The above is my latest ; it comprises a fully complete set of Best Extra Quality English Electrum Instruments, with all most recent additions and improvements, in a flat Real Morocco Pocket Case, and the case when closed only measures 5½ inches long by 3 inches wide. The bulk of my cases are all quite special and entirely different to what are usually sold. For particulars and prices see Illustrated Catalogue—post free.

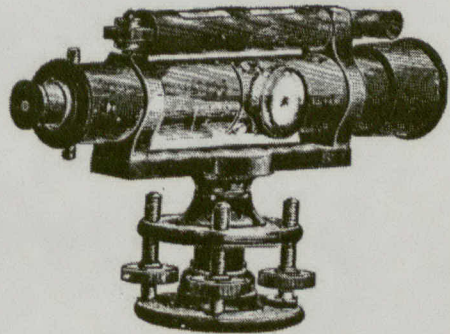
## SPECIAL SURVEYING INSTRUMENTS

ENGLISH MAKE.

THORNTON'S IMPROVED LEVELLING STAVES



With either Reverse or Upright Reading.



LEVELS with Case, Tripod and Fittings Complete from 70s.

THEODOLITES, STAVES, CHAINS, TAPES, RODS, ETC., in large variety.

TRACING PAPERS AND CLOTHS of every kind and quality, also PHOTO PAPERS for copying tracings. Samples post free.

NEW DRAWING BOARDS and T SQUARES.

LIQUID WATERPROOF COLOURS, PENCILS, RULES, SCALES, ETC., ETC.

Just Published—Enlarged Edition of Catalogue (A 1903) Demy 8vo 240 Pages, over 500 Illustrations and 13 full Page Coloured Illustrations. Post free.

Thornton's Specialties are the Latest, Best and Cheapest

SEE LIST POST FREE

CONTRACTOR TO  
HIS MAJESTY'S  
GOVERNMENT

**A. G. THORNTON**  
PRACTICAL MANUFACTURER  
Paragon Works : King Street West, MANCHESTER

Telegrams :



"Drawing, Manchester."

AGENTS FOR CANADA :

THE C. H. MORTIMER PUBLISHING COMPANY, Limited, Imperial Building, Montreal, and Confederation Life Building, Toronto

FAVORABLY KNOWN SINCE 1826. **BELLS**  
 HAVE FURNISHED 25,000 CHURCH SCHOOLS & OTHER  
 GENUINE WEST-TROY N.Y. BELL-METAL  
 CHIMES, ETC. CATALOGUE & PRICES FREE.  
 Bells Mounted in any Style.

**GREAT CLOCK BELLS FOR CITY HALLS;  
 FIRE ALARM AND TOWER CLOCK BELLS.**  
 Westminster & Cambridge Clock Chimes.  
 Inquiries from Architects solicited.

## Wire Door Mats

The most durable, cleanest and perfect sanitary Mat made.  
 Has been on the market for 20 years.  
 All sizes and shapes made to order.  
 For stock sizes, see catalogue.

## THE B. GREENING WIRE CO., (LIMITED)

Hamilton, Ont. - Montreal, Que.

### Now Ready—Third Edition CANADIAN CONTRACTOR'S HAND-BOOK AND ESTIMATOR.

The third edition of the Canadian Contractor's Hand-Book has been published and is now on sale. The book has been revised and enlarged to upwards of two hundred pages, and the title changed to the Canadian Contractor's Hand-Book and Estimator, considerable matter bearing upon the cost of performing various kinds of work having been added.

The price of the third edition, mailed free, is \$1.00 to subscribers of the CANADIAN ARCHITECT AND BUILDER, and \$1.50 to non-subscribers. Order from the publishers,

The C. H. Mortimer Publishing Co., of Toronto, Limited  
 Confederation Life Bldg., Toronto.  
 Imperial Building, Montreal.

## Rubber House Mats



Write for Catalogue and Price List.

**The Dunlop Tire Co., Limited, Toronto**  
 MANUFACTURERS OF RUBBER GOODS.

Rubber Mats for all descriptions of buildings—made in artistic designs of the most serviceable of material. The mat with the trade mark of the "Two hands" is known the Dominion over as the best of all.

THE **C. G. Young Co.**  
 Manufacturers  
**RUBBER STAMPS**  
 Cor. Yonge and Adelaide Streets,  
**TORONTO**  
 Send for Quotations.



### CABOT'S CREOSOTE SHINGLE STAINS

The Original and Standard Shingle Stains are made only by **SAMUEL CABOT**, of Boston, Mass. Every package bears his trade mark, and every gallon is guaranteed. Used and proved in every climate for nearly twenty years. Also

### CABOT'S

#### Sheathing and Deafening "Quilt"

the most perfect insulator of heat and deadener of sound on the market. Decay moth and vermin-proof, and uninflamable

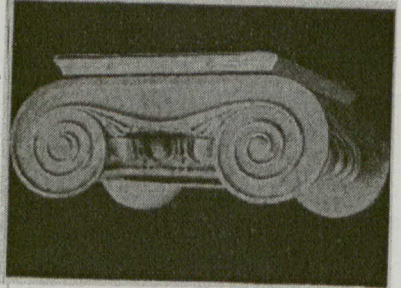
Samples, Catalogue and full information upon application to the manufacturer or his

#### CANADIAN AGENTS:

ANDREW MUIRHEAD, 33 Bay St., Toronto.  
 SEYMOUR & CO., Montreal.  
 C. G. HENSHAW, Vancouver.  
 F. H. BRYDGES, Winnipeg.  
 W. H. THORNE & CO., St. John  
 E. D. ADAMS, Halifax.

Please mention the CANADIAN ARCHITECT AND BUILDER when corresponding with advertisers.

# CAPITALS



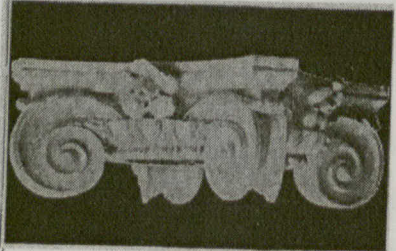
## DETROIT DECORATIVE SUPPLY COMPANY

MANUFACTURERS OF

Relief Ornamentation  
 Staff Work  
 Architectural Carving  
 and Modelling

## Composition Capitals

Exterior and Interior  
 Composition Ornaments



SEND FOR CATALOG  
 812 14th Ave., Detroit, Mich.

# ROMAN

## THE PERFECT BUILDING STONE

Manufactured by the most modern process from select building stone.

### STRENGTH AND BEAUTY

Cheaper than natural Stone.  
 Absolutely fire proof material.  
 No limit to its possibilities of application.

Has the exact appearance of natural Stone and is stronger and more durable.

Made in any color or texture for exterior or interior finish.

Contracts executed for anything in Stone or Concrete.  
 Correspondence and Inspection of our plant solicited.

# STONE

THE ROMAN STONE CO., LIMITED, MARLBOROUGH AVE., TORONTO.

**Classified Directory of Montreal Contractors and Dealers in Builders' Supplies**

**BUILDING MATERIALS**

**E. F. DARTNELL.**

Stone Pressed and Common Bricks, Mineral Wool, etc. Telephone 2382. 180 St. James Street.

**T. A. MORRISON & CO.,**

Milton Pressed Bricks, Limestone and Sandstones, Contractors' Plant, Crushed Stone for Concrete, etc. 204 St. James St., Montreal

**JAS. W. PYKE & CO.**  
Importers Structural Material—Iron and Steel  
Telephone 372. Merchants Bank Bldg.

Subscribe for the ARCHITECT AND BUILDER.

**ROOFERS**

**D. NICHOLSON & CO.,** Roofers, 679 St. Paul Street, Montreal. Gravel Roofing a Specialty. Repairs of all kinds promptly attended to. Bell Telephone 1669.

Advertise in the ARCHITECT AND BUILDER

**Classified Directory of Toronto Contractors and Dealers in Builders' Supplies**

**BUILDING MATERIALS**

**GEORGE RATHBONE,** 2 Northcote Ave. Pine, Hemlock and Hardwood Lumber; Lath, Shingles and Cedar Posts; Sawn Veneers. Re-sawing up to 30 inches wide a specialty.

**GEORGE OAKLEY & SON**  
Dealers in Cut Stone  
126 Richmond St. W. - TORONTO.  
Telephone Main 4468.

**Ontario Lime Association**  
Manufacturers and Dealers in  
Grey Lime, Guelph White Lime,  
Ontario Cement, Portland Cements  
Plaster Paris, Hair, Fire Brick,  
Fire Clay, Sewer Pipe, etc.  
Telephone 920. 118 Esplanade St. E., Toronto

**BUILDERS and CONTRACTORS**

**FREDERIC HOLMES, Contractor**  
Telephone North 663. 1111 Yonge St., Toronto.  
Estimates given for Cut Stone, Brickwork, Etc.

**MANTELS, GRATES and TILES**

**Toronto Hardware Mfg. Co.**  
1100 Queen St. W.  
ALSO PLUMBERS' SUPPLIES.

**ROOFERS**

**ROBT. RENNIE & SON,**  
Terra Cotta Tile.  
**SLATE AND GRAVEL ROOFERS, &C.**  
Every description of Roofing Slate always on hand. Galvanized Iron Kidges, Valleys and Flashings supplied. Telephone 2344. 378 Berkeley St., TORONTO.

**H. WILLIAMS & CO.,** TORONTO.  
23 Toronto St.  
**ROOFERS**  
With Slate, Felt and Gravel; also Williams' Flat Slate Roof—the best. We lay ROCK ASPHALT on cellar bottoms, floors and walks—the best material for this work. Telephone No. 571.

**W. T. STEWART & CO.**  
**Felt and Slate Roofers,**  
Dealers in Felt, Pitch, Tar, Sheathing Paper, Carpet Paper, and all kinds of Building Paper.  
Office: Cor. Adelaide and Bay Sts., TORONTO.  
Estimates furnished. Telephone No. 698.

**G. DUTHIE & SONS,**  
**Terra Cotta Tile, Slate and Felt Roofers,**  
Cor. Widmer and Adelaide Sts., - TORONTO.  
GALVANIZED IRON FURNISHINGS SUPPLIED.  
Telephone 1936.

**ESTABLISHED 1856**  
Slate and Felt Roofing.  
**FORBES ROOFING CO.** 133 Bay St

**DOUGLAS BROS.**

**SLATE, TILE AND METAL ROOFERS.**  
Sheet Metal Work, Metallic Ceilings, Skylights, etc.  
24 Adelaide Street West, TORONTO.  
Telephone Main 300.

**PIONEER GALVANIZED IRON WORKS**  
ESTABLISHED 1855.  
**GEORGE RINGHAM**  
TORONTO  
23 and 25 Edward Street,  
Copper and Galvanized Iron Cornices,  
Skylights, Etc., Metal Ceilings  
Felt and Slate Roofing. Phone Main 2572.

**MOVERS**

**I. WARDELL & SON**  
450 Spadina Avenue,  
Move Frame and Brick Houses and Machinery.

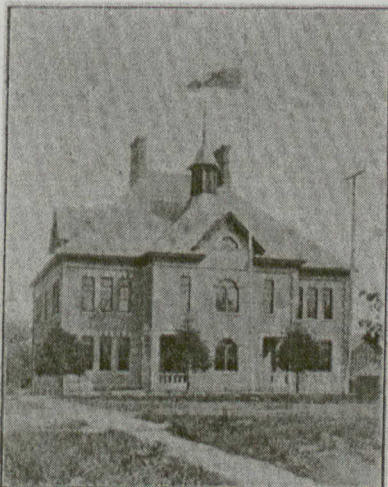
Send for 3rd edition of the Canadian Contractors' Handbook. Price \$1.50; \$1.00 to subscribers of the Canadian Architect and Builder.

**THE C. H. MORTIMER PUBLISHING CO. OF TORONTO, LIMITED.**

**SCHOOLS PROPERLY WARMED**

and VENTILATED

With **KELSEY** CORRUGATED WARM AIR GENERATORS (PATENTED)



**BLENHIM PUBLIC SCHOOL,**  
Warmed and Ventilated with two No. 30 Kelsey Warm Air Generators.

**THE JAMES SMART MFG. CO.,** Brockville, Ont.  
Blenheim, Ont., April 30th, 1902.  
DEAR SIRS,—We take pleasure in testifying to our complete satisfaction with the two No. 30 "Kelsey Warm Air Generators" you placed in our School about a year ago. Our building consists of eight large class rooms, four cloak rooms, four teachers' rooms and two large halls, in all measuring about 725,000 cubic feet, and we have perfectly warmed this whole building with two of your No. 30 "Kelsey" Warm Air Generators despite the fact we have neither storm windows or doors. The amount of coal used is, under the circumstances, surprisingly small, and the furnaces though so powerful in heat radiation are yet so easy to manage, and without so clean and tidy that it is a pleasure to attend to them. The ventilation of the building is simply perfect. We feel that the "Kelsey" Warm Air Generators are at once the most powerful, cleanest, most economical, and all things considered, the cheapest on the market to-day.  
I must not neglect to state that when putting in the heaters we had tenders from all the leading manufacturers in the province, and no other would undertake to do the work required with less than four furnaces. Yours respectfully,  
Geo. J. Gibbs, Secretary School Board.

**KELSEY GENERATORS** are particularly adapted to the PROPER and ECONOMICAL warming of churches, schools, and other public buildings.

WE TAKE DIRECT CONTRACTS AND GUARANTEE RESULTS.

We will have pleasure in sending our Catalogue on request.

**THE JAMES SMART MFG. CO., Limited**

Exclusive Makers for Canada

BROCKVILLE, ONT

WINNIPEG, MAN

**PAGES**

**MISSING**