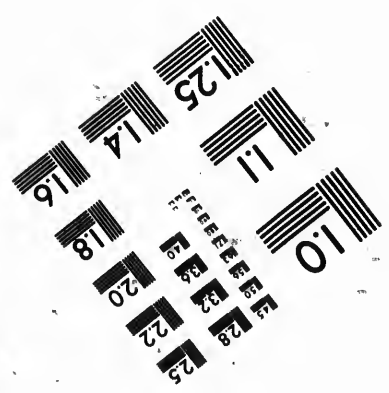
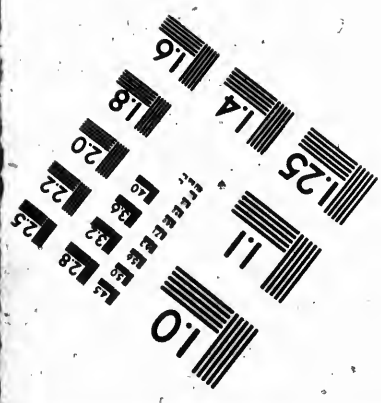
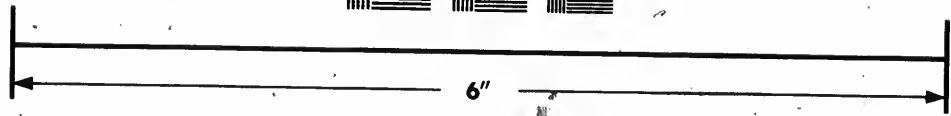
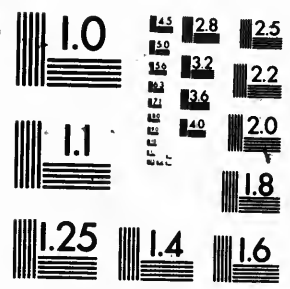


# IMAGE EVALUATION TEST TARGET (MT-3)



Photographic  
Sciences  
Corporation

23 WEST MAIN STREET  
WEBSTER, N.Y. 14580  
(716) 872-4503

**CIHM  
Microfiche  
Series  
(Monographs)**

**ICMH  
Collection de  
microfiches  
(monographies)**



**Canadian Institute for Historical Microreproductions / Institut canadien de microreproductions historiques**

**© 1992**

Technical and Bibliographic Notes / Notes techniques et bibliographiques

The Institute has attempted to obtain the best original copy available for filming. Features of this copy which may be bibliographically unique, which may alter any of the images in the reproduction, or which may significantly change the usual method of filming, are checked below.

L'Institut a microfilmé le meilleur exemplaire qu'il lui a été possible de se procurer. Les détails de cet exemplaire qui sont peut-être uniques du point de vue bibliographique, qui peuvent modifier une image reproduite, ou qui peuvent exiger une modification dans la méthode normale de filmage sont indiqués ci-dessous.

- Coloured covers/  
Couverture de couleur
- Covers damaged/  
Couverture endommagée
- Covers restored and/or laminated/  
Couverture restaurée et/ou pelliculée
- Cover title missing/  
Le titre de couverture manque
- Coloured maps/  
Cartes géographiques en couleur
- Coloured ink (i.e. other than blue or black)/  
Encre de couleur (i.e. autre que bleue ou noire)
- Coloured plates and/or illustrations/  
Planches et/ou illustrations en couleur
- Bound with other material/  
Relié avec d'autres documents
- Tight binding may cause shadows or distortion along interior margin/  
La reliure serrée peut causer de l'ombre ou de la distorsion le long de la marge intérieure
- Blank leaves added during restoration may appear within the text. Whenever possible, these have been omitted from filming/  
Il se peut que certaines pages blanches ajoutées lors d'une restauration apparaissent dans le texte, mais, lorsque cela était possible, ces pages n'ont pas été filmées.

- Coloured pages/  
Pages de couleur
  - Pages damaged/  
Pages endommagées
  - Pages restored and/or laminated/  
Pages restaurées et/ou pelliculées
  - Pages discoloured, stained or foxed/  
Pages décolorées, tachetées ou piquées
  - Pages detached/  
Pages détachées
  - Showthrough/  
Transparence
  - Quality of print varies/  
Qualité inégale de l'impression
  - Continuous pagination/  
Pagination continue
  - Includes index(es)/  
Comprend un (des) index
- Title on header taken from: /  
Le titre de l'en-tête provient:
- Title page of issue/  
Page de titre de la livraison
  - Caption of issue/  
Titre de départ de la livraison
  - Masthead/  
Générique (périodiques) de la livraison

Additional comments: /  
Commentaires supplémentaires:

There are some creases in the middle of the pages.

This item is filmed at the reduction ratio checked below.  
Ce document est filmé au taux de réduction indiqué ci-dessous.

10X	12X	14X	16X	18X	20X	22X	24X	26X	28X	30X	32X
<input type="checkbox"/>	<input type="checkbox"/>	<input type="checkbox"/>	<input type="checkbox"/>	<input type="checkbox"/>	<input type="checkbox"/>	<input type="checkbox"/>	<input checked="" type="checkbox"/>	<input type="checkbox"/>	<input type="checkbox"/>	<input type="checkbox"/>	<input type="checkbox"/>

The copy filmed here has been reproduced thanks to the generosity of:

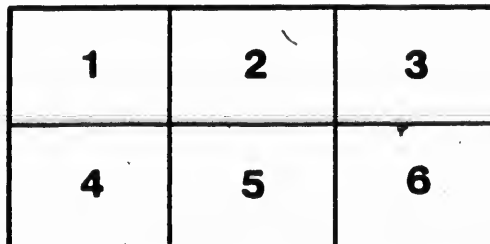
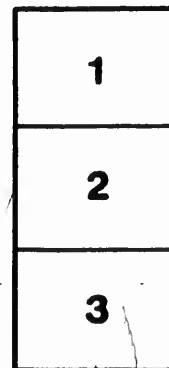
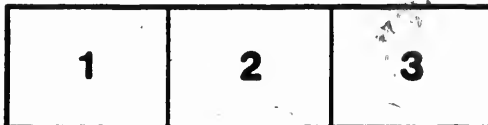
Manuscript Division,  
National Archives of Canada

The images appearing here are the best quality possible considering the condition and legibility of the original copy and in keeping with the filming contract specifications.

Original copies in printed paper covers are filmed beginning with the front cover and ending on the last page with a printed or illustrated impression, or the back cover when appropriate. All other original copies are filmed beginning on the first page with a printed or illustrated impression, and ending on the last page with a printed or illustrated impression.

The last recorded frame on each microfiche shall contain the symbol  $\rightarrow$  (meaning "CONTINUED"), or the symbol  $\nabla$  (meaning "END"), whichever applies.

Maps, plates, charts, etc., may be filmed at different reduction ratios. Those too large to be entirely included in one exposure are filmed beginning in the upper left hand corner, left to right and top to bottom, as many frames as required. The following diagrams illustrate the method:



L'exemplaire filmé fut reproduit grâce à la générosité de:

Division des manuscrits,  
Archives nationales du Canada

Les images suivantes ont été reproduites avec le plus grand soin, compte tenu de la condition et de la netteté de l'exemplaire filmé, et en conformité avec les conditions du contrat de filmage.

Les exemplaires originaux dont la couverture en papier est imprimée sont filmés en commençant par le premier plat et en terminant soit par la dernière page qui comporte une empreinte d'impression ou d'illustration, soit par le second plat, selon le cas. Tous les autres exemplaires originaux sont filmés en commençant par la première page qui comporte une empreinte d'impression ou d'illustration et en terminant par la dernière page qui comporte une telle empreinte.

Un des symboles suivants apparaîtra sur la dernière image de chaque microfiche, selon le cas: le symbole  $\rightarrow$  signifie "A SUIVRE", le symbole  $\nabla$  signifie "FIN".

Les cartes, planches, tableaux, etc., peuvent être filmés à des taux de réduction différents. Lorsque le document est trop grand pour être reproduit en un seul cliché, il est filmé à partir de l'angle supérieur gauche, de gauche à droite, et de haut en bas, en prenant le nombre d'images nécessaire. Les diagrammes suivants illustrent la méthode.

SHERBROOKE, June 23, 1834.

REVD. SIR,

The following memorial to Mr STANLEY, has been prepared for the signatures of the Clergy of this Diocese. And as it is desirable that there should be no needless delay, in the transmission of this memorial, I beg you to inform the Archdeacon of Quebec, whether you will authorise him to attach your name to it. Make your letter single, and direct it to "the Venerable, the Archdeacon of Quebec. Civil Secretary's Office, Quebec."

Your faithful Servant,  
C. J. QUEBEC.

---

**To the Right Honorable E. G. STANLEY, His Majesty's Principal Secretary of State for the Colonies, &c. &c. &c.**

The memorial of the undersigned, Ministers of the Church of England in the Canadas, and Missionaries of the Incorporated Society for the Propagation of the Gospel in Foreign Parts, Most respectfully sheweth:

That towards the close of the month of September last, your memorialists received from the Lord Bishop of Quebec a Circular bearing the date of the 1st of July, 1833, signed by the Secretary of the Society above mentioned, in which Circular his Lordship was requested to inform your memorialists, that from and after the date of the said letter, the salaries paid to them up to that date, should undergo a reduction of thirty per cent., and that a farther diminution should periodically take place until July, 1835, at which time their salaries are to be reduced to one half of the amount originally stipulated:

That although in the Province of Upper Canada arrangements have been made for paying from the Clergy Reserves, which are now available therein to that extent, the sum of £100 yearly to such of your memorialists as are resident within that Province, their allowance from the Society is to be altogether withdrawn, leaving them upon the same reduced footing with their brethren in the Lower Province:

This reduction is the consequence of the diminution already effected, and the cessation which is about to take place of the Parliamentary Grant heretofore made annually in aid of the desigms of that Venerable Society:

That from the whole tenor of the proceedings of Government since the conquest of the Country; from the allotment of lands under the 31st Geo. III. c. 31st for the endowment of Rectories or Parsonages according to the establishment of the Church of England, which may be expected ultimately to afford a considerable revenue; from the erection of the Provinces into a Diocese, and the appointment of a Bishop in 1793; from the reservation to itself on the part of the Crown, of the presentation to ecclesiastical Preferments; from the establishment of a Cathedral Church at Quebec, the formation of Archdeaconries and Parishes, and the constitution of Corporations of the Clergy of the Church of England in each Province for the management of the Reserves, the impression was created and maintained of an intention on the part of His Majesty's Government to provide in a permanent manner for the institutions of the Church of England thus formed within the country, and the Society and its Missionaries were induced to enter mutually into engagements from which they must have abstained, if they could have anticipated the failure of the expectations so raised:

That in the faith of continued countenance, and support from His Majesty's Government, the Bishops of Quebec, in concert with the Society, have from time to time, done their utmost to provide for the progressive demands of a still increasing population of the Church of England, (which of late years has received vast accessions from the influx of emigration,) by promoting the erection of Churches, and the formation of Missions, and by encouraging respectable and zealous Clergymen to forego their views and expectations at home, and to remove themselves and their families to Canada:

That your memorialists entered accordingly upon the charges respectively assigned to them, with a full conviction that their services were engaged for life, at the stipulated salary which was then allotted to them and specified upon the face of the forms which gave them authority to execute their sacred office:

That the removal of many of your memorialists from their own country was attended with sacrifices, which they will not now regret, because they trust that their ministry has not been wholly without fruit in the field where they have been called to labour by the Providence of God; but of the extent of which sacrifices, as now made to appear, they were totally unaware at the time, and which, had such an issue been foreseen, it would have been regarded, with reference to worldly interests, as the very height of imprudence to make:

That your memorialists, in most instances, found their emoluments, even before they were diminished by one half, to be no more than sufficient, with the strictest economy and management, to afford them a suitable maintenance according to their station in society, and to meet the demands arising from their relation to their people, especially in a climate where the severity of the winter imposes additional expenses upon themselves, and causes additional hardship to the poor; that even then they saw themselves surrounded, although they saw it without repining, by many in other professions or pursuits, who with similar original prospects and pretensions in life, and with a much less expensive education, had risen to far ampler means of providing for their families; but that with the slender allowance now assigned to them, they feel their respectability to be lowered, and their usefulness abridged; their credit impaired in quarters from which they were in the habit of receiving their supplies, and the field of their exertions necessarily narrowed on account of expenses attending their circuits of duty:

That other circumstances, which it might be considered a needless minuteness to particularize, have in different parts of the Diocese, deprived many of your memorialists of certain small emoluments, which constituted an addition to their incomes, and have thus conspired with the reduction which the Society for the Propagation of the Gospel have felt themselves necessitated to make, to bring them into a situation of positive and severe embarrassment and distress; so that humiliating examples might be here produced of their inability to meet their engagements, contracted under no apprehension of so adverse a change, or of their want of means to retain a single servant, male or female, in the family, to perform the menial offices of the house:

That it is impossible, under the circumstances of this country, to remedy the evils here represented, unless to a very inconsiderable extent, by means of the voluntary contributions of the people (~~which~~ at best, apt to create an objectionable kind of dependence,) however well affected towards the Church or personally towards their ministers, not only because the congregations have been long habituated to consider the main support of their Clergy as a thing provided for from other and permanent sources, but because ~~the members of such congregations themselves~~ in the great majority of settlements, are actually unable, from the scarcity of money and the struggles which they are making to establish their own families, to provide what is necessary ~~for~~ for such a purpose ~~themselves~~:

That therefore your memorialists most respectfully pray that you would be pleased to take the hardship of their case into your most serious and favorable consideration; and to devise such means, ~~from any funds which may be at the disposal of Government,~~ as to your wisdom shall suggest themselves, not only for their personal relief, but for the preservation of those high interests of which they are in charge, and which must unavoidably suffer if the present depressed condition of the Clergy should continue:

That with reference particularly to this last object, which far transcends the other in their estimation, your memorialists cannot forbear from taking this opportunity most respectfully but most earnestly to represent the importance of directing endowments to be made every where from the Clergy Reserves with the smallest possible delay, in order that matters may at length be put in train for making a permanent and suitable provision for the Church, and that the many evils may be remedied which arise from the precarious and unsettled condition of her establishment in the country.

And your memorialists as in duty bound, &c. &c.

# from any funds  
which may be at  
the disposal  
of Government,

