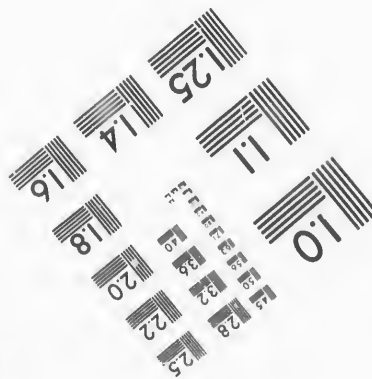
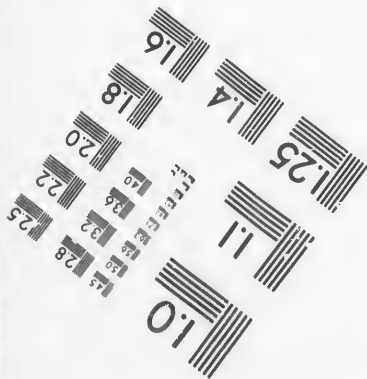
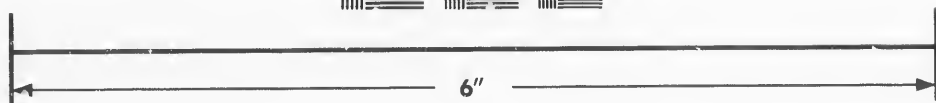
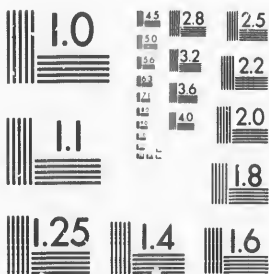


**IMAGE EVALUATION  
TEST TARGET (MT-3)**



**Photographic  
Sciences  
Corporation**

23 WEST MAIN STREET  
WEBSTER, N.Y. 14580  
(716) 872-4503

Can

**CIHM/ICMH  
Microfiche  
Series.**

**CIHM/ICMH  
Collection de  
microfiches.**



Canadian Institute for Historical Microreproductions / Institut canadien de microreproductions historiques

**© 1987**

Technical and Bibliographic Notes/Notes techniques et bibliographiques

The institute has attempted to obtain the best original copy available for filming. Features of this copy which may be bibliographically unique, which may alter any of the images in the reproduction, or which may significantly change the usual method of filming, are checked below.

L'Institut a microfilmé le meilleur exemplaire qu'il lui a été possible de se procurer. Les détails de cet exemplaire qui sont peut-être uniques du point de vue bibliographique, qui peuvent modifier une image reproduite, ou qui peuvent exiger une modification dans la méthode normale de filmage sont indiqués ci-dessous.

- |  |  |
|--|--|
| <input type="checkbox"/> Coloured covers/<br>Couverture de couleur   | <input type="checkbox"/> Coloured pages/<br>Pages de couleur   |
| <input type="checkbox"/> Covers damaged/<br>Couverture endommagée  | <input type="checkbox"/> Pages damaged/<br>Pages endommagées   |
| <input type="checkbox"/> Covers restored and/or laminated/<br>Couverture restaurée et/ou pelliculée  | <input type="checkbox"/> Pages restored and/or laminated/<br>Pages restaurées et/ou pelliculées  |
| <input type="checkbox"/> Cover title missing/<br>Le titre de couverture manque   | <input checked="" type="checkbox"/> Pages discoloured, stained or foxed/<br>Pages décolorées, tachetées ou piquées   |
| <input type="checkbox"/> Coloured maps/<br>Cartes géographiques en couleur   | <input type="checkbox"/> Pages detached/<br>Pages détachées  |
| <input type="checkbox"/> Coloured ink (i.e. other than blue or black)/<br>Encre de couleur (i.e. autre que bleue ou noire)   | <input checked="" type="checkbox"/> Showthrough/<br>Transparence   |
| <input type="checkbox"/> Coloured plates and/or illustrations/<br>Planches et/ou illustrations en couleur  | <input type="checkbox"/> Quality of print varies/<br>Qualité inégale de l'impression   |
| <input type="checkbox"/> Bound with other material/<br>Relié avec d'autres documents   | <input type="checkbox"/> Includes supplementary material/<br>Comprend du matériel supplémentaire   |
| <input type="checkbox"/> Tight binding may cause shadows or distortion<br>along interior margin/<br>La reliure serrée peut causer de l'ombre ou de la<br>distortion le long de la marge intérieure   | <input type="checkbox"/> Only edition available/<br>Seule édition disponible   |
| <input type="checkbox"/> Blank leaves added during restoration may<br>appear within the text. Whenever possible, these<br>have been omitted from filming/<br>Il se peut que certaines pages blanches ajoutées<br>lors d'une restauration apparaissent dans le texte,<br>mais, lorsque cela était possible, ces pages n'ont<br>pas été filmées. | <input type="checkbox"/> Pages wholly or partially obscured by errata<br>slips, tissues, etc., have been refilmed to<br>ensure the best possible image/<br>Les pages totalement ou partiellement<br>obscurcies par un feuillet d'errata, une pelure,<br>etc., ont été filmées à nouveau de façon à<br>obtenir la meilleure image possible. |
| <input checked="" type="checkbox"/> Additional comments:/<br>Commentaires supplémentaires:   |  |

Docket title is bound as last page but filmed as first page on fiche.

This item is filmed at the reduction ratio checked below/  
Ce document est filmé au taux de réduction indiqué ci-dessous.

10X	14X	18X	22X	26X	30X
<input type="checkbox"/>	<input type="checkbox"/>	<input type="checkbox"/>	<input type="checkbox"/>	<input type="checkbox"/>	<input checked="" type="checkbox"/>
12X	16X	20X	24X	28X	32X

The copy filmed here has been reproduced thanks to the generosity of:

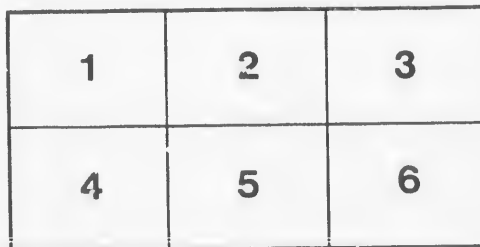
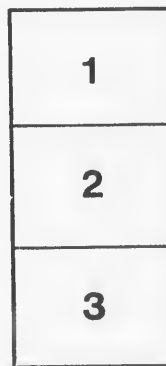
Metropolitan Toronto Library  
Canadian History Department

The images appearing here are the best quality possible considering the condition and legibility of the original copy and in keeping with the filming contract specifications.

Original copies in printed paper covers are filmed beginning with the front cover and ending on the last page with a printed or illustrated impression, or the back cover when appropriate. All other original copies are filmed beginning on the first page with a printed or illustrated impression, and ending on the last page with a printed or illustrated impression.

The last recorded frame on each microfiche shall contain the symbol  $\rightarrow$  (meaning "CONTINUED"), or the symbol  $\nabla$  (meaning "END"), whichever applies.

Maps, plates, charts, etc., may be filmed at different reduction ratios. Those too large to be entirely included in one exposure are filmed beginning in the upper left hand corner, left to right and top to bottom, as many frames as required. The following diagrams illustrate the method:



L'exemplaire filmé fut reproduit grâce à la générosité de:

Metropolitan Toronto Library  
Canadian History Department

Les images suivantes ont été reproduites avec le plus grand soin, compte tenu de la condition et de la netteté de l'exemplaire filmé, et en conformité avec les conditions du contrat de filmage.

Les exemplaires originaux dont la couverture en papier est imprimée sont filmés en commençant par le premier plat et en terminant soit par la dernière page qui comporte une empreinte d'impression ou d'illustration, soit par le second plat, selon le cas. Tous les autres exemplaires originaux sont filmés en commençant par la première page qui comporte une empreinte d'impression ou d'illustration et en terminant par la dernière page qui comporte une telle empreinte.

Un des symboles suivants apparaîtra sur la dernière image de chaque microfiche, selon le cas: le symbole  $\rightarrow$  signifie "A SUIVRE", le symbole  $\nabla$  signifie "FIN".

Les cartes, planches, tableaux, etc., peuvent être filmés à des taux de réduction différents. Lorsque le document est trop grand pour être reproduit en un seul cliché, il est filmé à partir de l'angle supérieur gauche, de gauche à droite, et de haut en bas, en prenant le nombre d'images nécessaire. Les diagrammes suivants illustrent la méthode.

rata  
o

pelure,  
à

COMPARATIVE LISTS  
OF THE CIVIL ESTABLISHMENTS

Of the several Colonies in the West Indies, North America,  
New South Wales, and Sierra Leone,

In the Years 1792, 1800, and 1818: viz.—

Bahama, Bermuda, Dominica, Upper Canada, New  
Brunswick, Nova Scotia, Cape Breton, Prince Edward  
Island, Newfoundland, New South Wales, and Sierra  
Leone.

HENRY GOLDBURN.

---

*Ordered, by The House of Commons, to be Printed*  
*25 February 1820.*

---





003505



x

Oct. 1, 1877

COMPARATIVE LISTS  
 OF THE CIVIL ESTABLISHMENTS OF THE SEVERAL COLONIES  
 IN THE WEST INDIES,  
 NORTH AMERICA, NEW SOUTH WALES, AND SIERRA LEONE,  
 IN THE YEARS  
 1792, 1800, AND 1818 :

*VIZ.*

BAHAMAS,	NEW BRUNSWICK,	NEWFOUNDLAND,
BERMUDA,	NOVA SCOTIA,	NEW SOUTH WALES,
DOMINICA,	CAPE BRETON,	AND
UPPER CANADA,	PRINCE EDWARD ISLAND,	SIERRA LEONE.

HENRY GOULBURN.

---

*Ordered, by The House of Commons, to be Printed,*  
*25 February 1820.*

---



BAHAMAS:	1792:		1800:		1818:	
	£	s. d.	£	s. d.	£	s. d.
Additional Salary to the Governor -	800	— —	800	— —	800	— —
Chief Justice - - - - -	500	— —	500	— —	500	— —
Two Assistant Judges - - - each	200	— —	200	each	200	each.
Secretary, &c. - - - - -	150	— —	150	— —	150	— —
Provost Marshal - - - - -	150	— —	150	— —	150	— —
Attorney General - - - - -	150	— —	150	— —	150	— —
Naval Officer - - - - -	150	— —	150	— —	150	— —
Minister - - - - -	70	— —	70	— —	70	— —
D <sup>o</sup> at Harbour Island and Eleuthera	70	— —	70	— —	70	— —
* To two D <sup>o</sup> at the other Islands, } each £.70 }	140	— —	140	— —	Nil.	
Surveyor General of Lands - - -	150	— —	150	— —	150	— —
Agent - - - - -	150	— —	150	— —	150	— —

\* Discontinued in 1813; no Missionaries having been in those Islands for a considerable time.

BERMUDA:	1792:	1800:	1818:		
* Salary of the Chief Justice - -	500	— —	500	— —	Nil.

\* This Estimate was discontinued in the year 1817.

DOMINICA:	1792:	1800:	1818:			
Chief Justice - - - - -	600	— —	600	— —	600	— —

\* To cease, when a Salary shall be provided by the Legislature.

UPPER CANADA:	1792:	1800:	1818:			
Lieut. Governor - - - - -	2,000	— —	2,000	— —	2,000	— —
Chief Justice * - - - - -	1,000	— —	1,100	— —	1,100	— —
Attorney Gen <sup>l</sup> - - - - -	300	— —	300	— —	300	— —
Solicitor Gen <sup>l</sup> - - - - -	100	— —	100	— —	100	— —
Two Judges † - - - - - each £. 500	1,000	— —	1,500	— —	1,500	— —
Clerk of the Crown and Pleas -	100	— —	100	— —	100	— —
Two Sheriffs - - - - - each £. 100	200	— —	200	— —	200	— —
Secretary and Register - - - -	300	— —	300	— —	300	— —
Clerk of the Council - - - - -	100	— —	100	— —	100	— —
‡ Surveyor of Lands - - - - -	Nil.	— —	300	— —	300	— —
Receiver Gen <sup>l</sup> of the Revenues -	200	— —	200	— —	200	— —
Five Executive Councillors - -	500	— —	500	— —	500	— —
Naval Officer - - - - -	100	— —	100	— —	100	— —
Agent - - - - -	200	— —	200	— —	200	— —
Bishop's Commissary § - - - -	Nil.	— —	— —	— —	150	— —

\* An increase of £. 100 per annum was made to the Salary of the Chief Justice in 1793, as stipulated previous to his departure for the Province.

† In the year 1799, the Salaries of the two Assistant Judges were increased £. 250 per annum each, their former Salaries being absolutely insufficient for their support.

‡ A Salary of £. 300 per annum was granted to the Surveyor General of Lands in 1800, who previous to that period was paid by Lower Canada.

§ The Bishop's Commissary was first appointed in 1793, in consequence of the increased Population of the Province requiring an additional supply of Ministers.

NEW BRUNSWICK:	1792:	1800:	1818:
	£. s. d.	£. s. d.	£. s. d.
Lieut. Governor - - - -	1,000 — —	1,000 — —	1,300 — —*
Chief Justice - - - -	500 — —	500 — —	750 — —†
Assistant Judges - - - - each	300 — —	500 each	200 each †
Attorney General - - - -	130 — —	150 — —	150 — —
Secretary, &c. - - - -	250 — —	250 — —	230 — —
Naval Officer - - - -	100 — —	100 — —	100 — —
Surveyor General - - - -	150 — —	150 — —	150 — —
Agent - - - -	150 — —	150 — —	150 — —
Bishop of N. Scotia's Commissary -	Nil.	150 — —	150 — —‡
Minister of the Church of Scotland, (at St. John's) - - - -	Nil.	Nil.	50 — —§

\* An addition of £. 300 per annum was made to the Salary of the Lieut. Governor in 1818, in lieu of a similar sum formerly granted from the Army Extraordinaries.

† An addition of £. 250 per annum to the Salary of the Chief Justice; and £. 200 per annum to the Salaries of the Assistant Judges, was made in 1808.

‡ First added to the Establishment in 1795, on account of the increased Population of the Province.

§ Continued in the year 1817, at the recommendation of the Lieut. Governor.

NOVA SCOTIA:	1792:	1800:	1818:
Lieut. Governor * - - - -	1,000 — —	1,000 — —	2,000 — —
Chief Justice - - - -	850 — —	850 — —	850 — —
Attorney General - - - -	150 — —	150 — —	150 — —
Secretary, Register and Clerk - - -	250 — —	250 — —	250 — —
Naval Officer - - - -	100 — —	100 — —	100 — —
Surveyor General - - - -	150 — —	150 — —	150 — —
Treasurer - - - -	50 — —	50 — —	50 — —
Agent - - - -	200 — —	200 — —	200 — —
Bishop - - - -	700 — —	700 — —	1,000 — —
Superintendent of Fishery - - - -	200 — —	200 — —	200 — —
Bishop's Commissary † - - - -	- - - -	- - - -	150 — —
Prothonotary ‡ - - - -	- - - -	100 — —	100 — —
Minister of the Scotch Church - - -	Nil.	75 — —	75 — —
D <sup>o</sup> of the German D <sup>o</sup> , who have joined the Church of England § - - -	75 — —	75 — —	Nil.

\* The Lieut. Governor's Salary was increased in 1810.

† First added to the Establishment in 1800, on account of the increased Population of the Province, which required an additional Supply of Ministers to assist the Bishop.

‡ This was introduced into the Parliamentary Estimate in 1795, in consequence of the Assembly declining to vote the Salary of £. 100, which had, up to that time, been regularly voted by them for that Officer.

§ Discontinued in 1814, in consequence of it appearing unnecessary to continue a separate Minister for this portion of the Established Church.

CAPE BRETON:	1792:	1800:	1818:
Lieut. Governor - - - -	500 — —	500 — —	500 — —
Chief Justice * - - - -	300 — —	300 — —	500 — —
Attorney General - - - -	100 — —	100 — —	100 — —
Secretary, &c. - - - -	150 — —	150 — —	150 — —
Naval Officer - - - -	100 — —	100 — —	100 — —
Provost Marshal - - - -	100 — —	100 — —	100 — —
Minister - - - -	100 — —	100 — —	100 — —
Surveyor General - - - -	100 — —	100 — —	100 — —
Agent - - - -	150 — —	150 — —	150 — —

\* The Salary of the Chief Justice was augmented to £. 500 per annum, in 1804.

	1792 :	1800 :	1818 :
	£. s. d.	£. s. d.	£. s. d.
PRINCE EDWARD ISLAND :			
Lieut. Governor * - - - -	500 — —	500 — —	800 — —
Chief Justice † - - - -	300 — —	300 — —	700 — —
Attorney Gen <sup>l</sup> - - - -	100 — —	100 — —	200 — —
Secretary, &c. - - - -	150 — —	150 — —	150 — —
Naval Officer - - - -	100 — —	100 — —	100 — —
Provost Marshal - - - -	100 — —	100 — —	100 — —
Minister - - - -	70 — —	70 — —	70 — —
Surveyor Gen <sup>l</sup> - - - -	100 — —	100 — —	200 — —
Agent - - - -	100 — —	100 — —	100 — —
Clerk of the Crown and Coroner -	Nil.	Nil.	90 — —

\* An addition of £.300 was made to the Salary of the Lieut. Governor in 1805.

† The Chief Justice's salary was increased £.100 per annum in 1803, £.100 per annum in 1804, and £.200 per annum in 1813.

NEWFOUNDLAND :			
* Governor - - - -	500 — —	500 — —	1,000 — —
Governor's Secy - - - -	182 10 —	182 10 —	182 10 —
† Chief Justice - - - -	- - - -	- - - -	1,000 — —
Judge of the Adm <sup>ty</sup> - - - -	200 — —	200 — —	500 — —
Naval Officer - - - -	100 — —	100 — —	100 — —
Agent - - - -	100 — —	100 — —	100 — —
Sheriff - - - -	Nil.	182 10 —	252 10 —
Missionary at St. John's - - - -	Nil.	50 — —	Nil.
Two add <sup>l</sup> Missionaries - - - -	Nil.	100 — —	Nil.
Clerk of the Supreme Court † -	Nil.	Nil.	70 — —
Marshal † - - - -	- - - -	- - - -	50 — —
Gaoler † - - - -	- - - -	- - - -	36 — —
Supreme Surrogate † - - - -	- - - -	- - - -	100 — —
Seven Surrogates † at £.60 each -	- - - -	- - - -	420 — —
Surveyor of Lands - - - -	- - - -	- - - -	25 — —
Schoolmaster - - - -	- - - -	- - - -	25 — —
Clerk to the Secretary - - - -	- - - -	- - - -	60 — —

\* The Governor's Salary was increased £.300 per annum in 1810, and £.200 per annum in 1817, on Newfoundland being made a permanent Government.

† Officers of the Supreme Court, who were formerly paid by the Treasury, but placed on the estimate of the Colony in 1810.

NEW SOUTH WALES

PORT JACKSON :	1792 :	1800 :	1818 :
	£. s. d.	£. s. d.	£. s. d.
Governor (1) - - - -	1,000 — —	1,000 — —	2,000 — —
Lieutenant Governor - - -	250 — —	— - -	200 — —
Judge Advocate (2) - - -	182 10 —	182 10 —	1,200 — —
Judge of the Supreme Court (3) - - -	— - -	— - -	800 — —
Provost Marshal - - - -	91 — —	91 — —	91 — —
Secretary to the Governor (4) - - -	— - -	91 5 —	282 10 —
Chaplain (5) - - - -	182 10 —	182 10 —	250 — —
Assistant Chaplains (6) - - -	— - -	106 — —	850 — —
Surveyor of Lands (7) - - -	182 10 —	182 10 —	275 15 —
Surgeon (8) - - - -	182 10 —	182 10 —	365 — —
Assistant Surgeons (9) - - -	293 15 —	323 15 —	638 15 —
Schoolmaster of the Orphan School (10) - - -	— - -	— - -	100 — —
Matron of the Orphan School (11) - - -	— - -	— - -	40 — —
Schoolmaster (12) - - - -	— - -	— - -	60 — —
Boatbuilder (13) - - - -	— - -	91 5 —	91 5 —
Clerk to the Judge Advocate (14) - - -	— - -	— - -	80 — —
Superintendents of Convicts (15) - - -	400 — —	450 — —	550 — —
Commissary (16) - - - -	182 10 —	365 — —	—
Six Officers of the Commissariat Establishment (17) - - - -	— - -	102 10 —	—
Agent - - - -	150 — —	150 — —	150 — —

(1) £. 1,000 per annum ; Salary added in 1805.  
 (2) Increased in 1805 to £. 355 per annum ; increased again in 1809 to £. 800 ; and in the year 1813 to £. 1,200 per annum.  
 (3) First appointed in 1813.  
 (4) Appointed in 1792 ; increased in 1809 to £. 182. 10 s. per annum ; and again increased in 1812 to £. 282. 10 s.  
 (5) Appointed in 1786 at a Salary of £. 182. 10 s. and increased in the year 1803 to £. 350 per annum - These Salaries were men used to the same amount as those of Officers holding corresponding rank in the Army.  
 (6) One Chaplain appointed in 1786, another in 1808, another in 1815, and the fourth in 1817 -  
 (7) Appointed in 1786 ; increased in 1803.  
 (8) D<sup>o</sup> - - - - d<sup>o</sup> - - - - d<sup>o</sup> - - - - } D<sup>o</sup> - - - - d<sup>o</sup> - - - - d<sup>o</sup>  
 (9) Three Assistants appointed in 1756, one added in 1793, and another in 1813 -  
 (10) Appointed in 1808.  
 (11) D<sup>o</sup> - - - - d<sup>o</sup>.  
 (12) D<sup>o</sup> - - - - d<sup>o</sup>.  
 (13) D<sup>o</sup> - - - - 1795.  
 (14) D<sup>o</sup> - - - - 1809.  
 (15) D<sup>o</sup> - - - - 1790.  
 (16) D<sup>o</sup> - - - - 1786 ; the Salary was increased in 1799 to £. 365 - - - - } Salaries of Commissariat Officers increased to be paid as the Estimate in 1813.  
 (17) D<sup>o</sup> - - - - 1798 - - - -

NEW SOUTH WALES *continued*

NORFOLK ISLAND.	1792:			1800:			1818:		
	£	s.	d.	£	s.	d.	£	s.	d.
Lieutenant Governor (1)	2	0	—	4	0	—	—	—	—
Chaplain (2)	1	0	—	5	8	—	—	—	—
Deputy Commissary (3)	9	5	—	9	5	—	—	—	—
Deputy Surveyor of Lands (4)	—	—	—	9	7	—	—	—	—
Surgeon (5)	—	—	—	1	0	—	—	—	—
Storekeeper (6)	—	—	—	5	0	—	—	—	—
Three Superintendents of Convicts (7)	—	—	—	1	0	—	—	—	—
Carpenter (8)	—	—	—	1	0	—	—	—	—
Beach Master and Pilot (9)	—	—	—	8	0	—	—	—	—
Deputy Judge Advocate (10)	—	—	—	1	0	—	—	—	—
Provost Marshal (11)	—	—	—	7	0	—	—	—	—

(1) Appointed in 1791; Salary increased to £. 450, in 1795.

(2) D<sup>o</sup> - - - d<sup>o</sup> - - - the decrease of the Salary in 1805, was in consequence of a Junior Assistant Chaplain being appointed to this Station.

(3) D<sup>o</sup> - - - d<sup>o</sup>

(4) D<sup>o</sup> - - - d<sup>o</sup>

(5) D<sup>o</sup> - - - 1798.

(6) D<sup>o</sup> - - - 1793.

(7) D<sup>o</sup> - - - 1798. This Settlement was abandoned in the Year 1812.

(8) D<sup>o</sup> - - - d<sup>o</sup>

(9) D<sup>o</sup> - - - d<sup>o</sup>

(10) D<sup>o</sup> - - - d<sup>o</sup>

(11) D<sup>o</sup> - - - d<sup>o</sup>

## HOBART TOWN

Lieut. Governor of Van Diemen's Land (1)	—	—	—	8	0	—
Deputy Judge Advocate (2)	—	—	—	6	0	—
Chaplain (3)	—	—	—	2	6	0
Surgeon (4)	—	—	—	1	8	10
First Assistant (5)	—	—	—	1	3	6
Second D <sup>o</sup> (6)	—	—	—	9	5	—
Deputy Surveyor of Lands (7)	—	—	—	9	5	—
Two Superintendents of Convicts, at £. 50 each (8)	—	—	—	1	0	—

(1) Appointed in 1806, at £. 450 per annum, being at that period only Lieutenant Governor of the Settlement at Hobart Town; the Salary was increased in 1812; the appointment of Lieutenant Governor of Van Diemen's Land, taking date from that time.

(2) Appointed in 1806, at a Salary of £. 182. 10s.; increased in 1815 to £. 600, as Deputy Judge Advocate of Van Diemen's Land.

(3) D<sup>o</sup> - - - d<sup>o</sup> - - - £. 260.

(4) D<sup>o</sup> - - - d<sup>o</sup>

(5) D<sup>o</sup> - - - d<sup>o</sup>

(6) D<sup>o</sup> - - - d<sup>o</sup>

(7) D<sup>o</sup> - - - d<sup>o</sup>

(8) D<sup>o</sup> - - - d<sup>o</sup>

NEW SOUTH WALES

PORT DAURYMOUTH	1799			1800			1812		
	£	s.	d.	£	s.	d.	£	s.	d.
Officer in command of the Ship							182	10	—
Chaplain (*)							182	10	—
Surgeon (†)							182	10	—
Assistant d <sup>o</sup> (‡)							136	17	0
Two Superintendents of Convicts at £. 50 per annum each (§)							100	—	—

(\*) Appointed in 1806 at £. 450 per annum; Salary reduced in 1812 to £. 182 10s. under the command of the Lieut. Governor of Van Diemen's Land.

(†) Appointed in 1806.

(‡) D<sup>o</sup> . . . . d<sup>o</sup>

(§) D<sup>o</sup> . . . . d<sup>o</sup>

(§) D<sup>o</sup> . . . . d<sup>o</sup>

SIERRA LEONE:

Governor	Nil.	Nil.	2,000	—	—
Chief Justice and Judge of the Vice Admiralty Court			1,500	—	—
Secretary			500	—	—
Collector of Duties			500	—	—
Chaplain			300	—	—
Another Chaplain			450	—	—
Engineer			100	—	—
Assistant ditto			500	—	—
First Surgeon			300	—	—
Second ditto, and Apothecary			50	—	—
Assistant Apothecary			250	—	—
Mason			250	—	—
Carpenter			500	—	—
Surveyor of Lands			150	—	—
Printer			50	—	—
Assistant Printer			500	—	—
King's Advocate			50	—	—
Clerk of the Recorder's Court			450	—	—
First Writer and Registrar of Grants			500	—	—
Second ditto			250	—	—
Third ditto			250	—	—
Fourth ditto			150	—	—
Fifth ditto			150	—	—
Sixth ditto			200	—	—
Agent				—	—

N. B.—This Colony was transferred to the Crown by the Sierra Leone Company in 1807, and an Estimate for its Civil Establishment first submitted to Parliament in 1808.

HENRY GOULD PURN.

