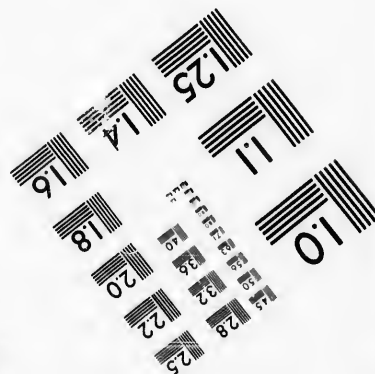
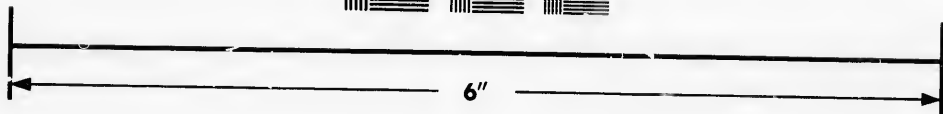
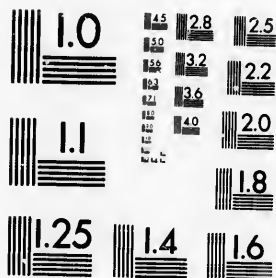


**IMAGE EVALUATION
TEST TARGET (MT-3)**



**Photographic
Sciences
Corporation**

23 WEST MAIN STREET
WEBSTER, N.Y. 14580
(716) 872-4503

**CIHM/ICMH
Microfiche
Series.**

**CIHM/ICMH
Collection de
microfiches.**



Canadian Institute for Historical Microreproductions / Institut canadien de microreproductions historiques

© 1986

Technical and Bibliographic Notes/Notes techniques et bibliographiques

The Institute has attempted to obtain the best original copy available for filming. Features of this copy which may be bibliographically unique, which may alter any of the images in the reproduction, or which may significantly change the usual method of filming, are checked below.

L'Institut a microfilmé le meilleur exemplaire qu'il lui a été possible de se procurer. Les détails de cet exemplaire qui sont peut-être uniques du point de vue bibliographique, qui peuvent modifier une image reproduite, ou qui peuvent exiger une modification dans la méthode normale de filmage sont indiqués ci-dessous.

- | | |
|--|--|
| <input type="checkbox"/> Coloured covers/
Couverture de couleur | <input type="checkbox"/> Coloured pages/
Pages de couleur |
| <input type="checkbox"/> Covers damaged/
Couverture endommagée | <input type="checkbox"/> Pages damaged/
Pages endommagées |
| <input type="checkbox"/> Covers restored and/or laminated/
Couverture restaurée et/ou pelliculée | <input type="checkbox"/> Pages restored and/or laminated/
Pages restaurées et/ou pelliculées |
| <input type="checkbox"/> Cover title missing/
Le titre de couverture manque | <input checked="" type="checkbox"/> Pages discoloured, stained or foxed/
Pages décolorées, tachetées ou piquées |
| <input type="checkbox"/> Coloured maps/
Cartes géographiques en couleur | <input type="checkbox"/> Pages detached/
Pages détachées |
| <input type="checkbox"/> Coloured ink (i.e. other than blue or black)/
Encre de couleur (i.e. autre que bleue ou noire) | <input checked="" type="checkbox"/> Showthrough/
Transparence |
| <input type="checkbox"/> Coloured plates and/or illustrations/
Planches et/ou illustrations en couleur | <input type="checkbox"/> Quality of print varies/
Qualité inégale de l'impression |
| <input type="checkbox"/> Bound with other material/
Relié avec d'autres documents | <input type="checkbox"/> Includes supplementary material/
Comprend du matériel supplémentaire |
| <input type="checkbox"/> Tight binding may cause shadows or distortion
along interior margin/
La reliure serrée peut causer de l'ombre ou de la
distorsion le long de la marge intérieure | <input type="checkbox"/> Only edition available/
Seule édition disponible |
| <input type="checkbox"/> Blank leaves added during restoration may
appear within the text. Whenever possible, these
have been omitted from filming/
Il se peut que certaines pages blanches ajoutées
lors d'une restauration apparaissent dans le texte,
mais, lorsque cela était possible, ces pages n'ont
pas été filmées. | <input type="checkbox"/> Pages wholly or partially obscured by errata
slips, tissues, etc., have been refilmed to
ensure the best possible image/
Les pages totalement ou partiellement
obscurcies par un feuillet d'errata, une pelure,
etc., ont été filmées à nouveau de façon à
obtenir la meilleure image possible. |
| <input checked="" type="checkbox"/> Additional comments: [Printed ephemera] [4] p.
Commentaires supplémentaires: | |

This item is filmed at the reduction ratio checked below/
Ce document est filmé au taux de réduction indiqué ci-dessous.

10X	14X	18X	22X	26X	30X
<input type="checkbox"/>	<input type="checkbox"/>	<input type="checkbox"/>	<input type="checkbox"/>	<input checked="" type="checkbox"/>	<input type="checkbox"/>
12X	16X	20X	24X	28X	32X

The copy filmed here has been reproduced thanks to the generosity of:

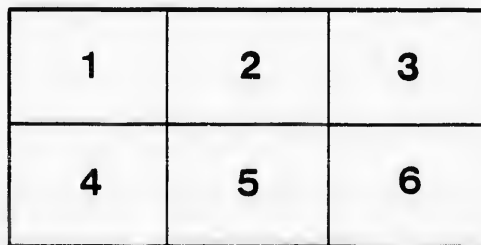
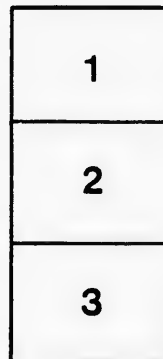
D. B. Weldon Library
University of Western Ontario
(Regional History Room)

The images appearing here are the best quality possible considering the condition and legibility of the original copy and in keeping with the filming contract specifications.

Original copies in printed paper covers are filmed beginning with the front cover and ending on the last page with a printed or illustrated impression, or the back cover when appropriate. All other original copies are filmed beginning on the first page with a printed or illustrated impression, and ending on the last page with a printed or illustrated impression.

The last recorded frame on each microfiche shall contain the symbol \rightarrow (meaning "CONTINUED"), or the symbol ∇ (meaning "END"), whichever applies.

Maps, plates, charts, etc., may be filmed at different reduction ratios. Those too large to be entirely included in one exposure are filmed beginning in the upper left hand corner, left to right and top to bottom, as many frames as required. The following diagrams illustrate the method:



L'exemplaire filmé fut reproduit grâce à la générosité de:

D. B. Weldon Library
University of Western Ontario
(Regional History Room)

Les images suivantes ont été reproduites avec le plus grand soin, compte tenu de la condition et de la netteté de l'exemplaire filmé, et en conformité avec les conditions du contrat de filmage.

Les exemplaires originaux dont la couverture en papier est imprimée sont filmés en commençant par le premier plat et en terminant soit par la dernière page qui comporte une empreinte d'impression ou d'illustration, soit par le second plat, selon le cas. Tous les autres exemplaires originaux sont filmés en commençant par la première page qui comporte une empreinte d'impression ou d'illustration et en terminant par la dernière page qui comporte une telle empreinte.

Un des symboles suivants apparaîtra sur la dernière image de chaque microfiche, selon le cas: le symbole \rightarrow signifie "A SUIVRE", le symbole ∇ signifie "FIN".

Les cartes, planches, tableaux, etc., peuvent être filmés à des taux de réduction différents. Lorsque le document est trop grand pour être reproduit en un seul cliché, il est filmé à partir de l'angle supérieur gauche, de gauche à droite, et de haut en bas, en prenant le nombre d'images nécessaire. Les diagrammes suivants illustrent la méthode.

errata
to

pelure,
on à

March 31, 1894

MICHIGAN, OHIO
CANADIAN CIRCUIT

EIGHTEEN
THEATRES

CLEVELAND, CINCINNATI, BUFFALO,
DETROIT, TORONTO,
TOLEDO, LONDON, HAMILTON,
WOODSTOCK, SAGINAW,
GRAND RAPIDS, BAY CITY AND
JACKSON.

Grand OPERA HOUSE London.

C. J. WHITNEY.
LESSEE.

A. E. ROOTE.
MANAGER

ONTARIO.



W. SMITH.

E. HOLLAND.

W. S. PARTRIDGE.

SMITH & BROS.

THE
LEADING
SANITARY
PLUMBERS
AND
HEATING
ENGINEERS
OF
WESTERN
ONTARIO.

376
RICHMOND STREET,

LONDON.

OPPOSITE GRAND OPERA HOUSE BUILDING.

A full stock of Supplies always on hand.

TELEPHONE 538.

LADIES! THE ONLY WAY TO GET HELP IS THROUGH THE "FREE PRESS" WANT COLUMN.



**Parisian
Steam
Laundry**

73 & 75 DUNDAS STREET.

BRANCH OFFICES;

226 Dundas St. 752 Waterloo. 410 Hamilton Rd.
28 " " 572 Fall Mall. 251 Wellington.
310 " " 380 Richmond. 335 Ridout.
032 " " 485

J. K. SPRY, Manager.

HUESTON'S

**LIVERY,
Goupe & Gab Stables**
WELLINGTON STREET.

Finest Horses and Carriages in the City.
OPEN DAY AND NIGHT. TELEPHONE 441.

ROBT. HUESTON,
Proprietor.

H. MCKENNA,
—FOR—

**Choice Cigars, Tobaccos
AND PIPES.**

ALWAYS OPEN
..... AFTER THE OPERA.

225 DUNDAS STREET.

SPRING



1894.

WE have just received the finest assortment of Spring Hats ever shown in the city. We are leaders for correct shapes, try us. A pleasure to show goods.

Rivard

LONDON'S
FASHIONABLE
HATTER AND
FURRIER

400 RICHMOND
STREET.

WILLIAMS' Pianos CANADA'S FAVORITE

Cannot be excelled for touch, singing quality, delicacy and great power of tone, with highest excellence of workmanship.

ALL THE LATEST VOCAL AND INSTRUMENTAL
MUSIC RECEIVED AS PUBLISHED.

Musical Instruments of all kinds, Strings and Fittings
AT LOWEST PRICES.

R. S. WILLIAMS & SON, 171 DUNDAS STREET,
LONDON, ONT.
J. A. CRODEN, Manager.

PROGRAMME

MATINEE, SATURDAY, MARCH 31.

THE FAVORITE ACTRESS, 1894

Ida Van Cortland

And the Magnificent Organization
of Players known as
Tavernier's Stock Company.

THE MIGHTY DOLLAR.

CAST OF CHARACTERS.

MRS. GEN'L GILFLORY, - - - ICA VAN CORTLAND
Libby Ray, her niece Silence Vyse
Blanche Mossthorne Nellie Morgan
Clara Dart Margaret Crofton
An Old Maid Nellie Morgan
Hon. Bardwell Slate Albert Tavernier
Lemaitre Howard Hall
Roland Vance John E. Miles
Col. Dart Geo. H. Hawson
Charley Brood M. B. Streeter
George Washington F. A. Millis
Lord Cairngorn Lew A. Warner

SYNOPSIS.

ACT I.—Grabmore. A Fete. The Committee of the Whole.
ACT II.—A Picnic on the Potomac. The House divided.
ACT III.—Carried by a large Majority.

NOTE.—Incidental to this play Specialties will be introduced in Act I. and Act II., and Little Cosy will appear between Acts I. and II.

(Programme continued on next page.)

SOMETHING NEW.

Opera English & Canadian
Caramels. Chocolate Creams.
VERY FINEST Olives in Bulk.
French Crystalized .. Fresh Roquefort Cheese..
FRUITS.

FITZGERALD, SCANDRETT & CO.
169 Dundas Street.

ESTABLISHED 1831.

**H. DAVIS & SON,
WATCHMAKERS
AND
JEWELLERS**

DEALERS IN
Watches, Clocks, Jewellery, Spectacles,
Silver Plated Ware, &c.

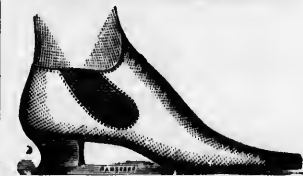
170 DUNDAS ST., LONDON, ONT.

W. T. STRONG

Dispensing
Chemist,

184 Dundas Street,
LONDON, - ONTARIO.

BROWN,



145 Dundas Street.

OUR aim has been to steadily increase our business by the excellence of our goods and the low price at which we sell them; and we are pleased to tell our patrons that we have succeeded beyond our highest expectations. The reputation enjoyed by Brown's Shoe Store as the leader in

First-Class, Stylish, Fine Footwear
..... has been well earned.

Our 1894 Spring and Summer Stock will contain all the Latest Designs from the leading American and Canadian Houses, and will combine the Street with the Serviceable.

THE FOLLOWING ARE SOME OF OUR NEWEST —
FOR LADIES:
"The Prince Edna," "Lapelle," "Eugene"
"Jacquette," "Eulalia," "Summer" (six large buttons), "Blucrerette,"
"White Stitched Oxford, with French Heel" (very pretty).

FOR GENTLEMEN:
"New York Razor Toe Wing Tip,"
IN PATENT AND TAN.
"Abington," Furned Sole Bal.
(A VERY NICE DRESS SHOE.)
"Harvard," Calf Bal.,
IN TAN AND SLACK.
"Opera," "Bon-Ton," "Old London."

We have also full lines of staple goods of the highest grade, and in our Heavy Foot Department we sell ten per cent. cheaper than similar goods can be bought for elsewhere. In Boys', Girls' and Babies' Shoes, we carry a great variety in all grades, calculated to meet every requirement for school, play and dress.

See our Windows. Inspect our Goods. Ascertain our Prices.

BROWN.
TELEPHONE 881.

IF YOU WANT THE BEST TAKE THE "FREE PRESS." ALL THE NEWS!

— TRY —
SOUTHCOTTS
 FOR Nice Suit
 Fancy Vest 
 ..OR Trousers
 NEAT LINE OF LIGHT-WEIGHT OVERCOATINGS IN STOCK.
 Satisfaction Assured. Prices Right.
 361 RICHMOND STREET.

Gentlemen:
 SEE OUR LEADING
SPRING HAT
For \$2.00.
 In Colored and Black.
GRAHAM BROS.,
 LEADING HATTERS
 AND FURNISHERS, / 159 DUNDAS ST.

Wm. Stevely & Son,
 — THE LEADING DEALERS IN —
 STOVES, RANGES,
 .. AND ..
HOUSE FURNISHING GOODS.
 OUR STOCK IS THE LARGEST.
 OUR PRICES THE LOWEST.
 362 RICHMOND STREET.
 'PHONE 452.

I-I-I-I-I-I-I-I-I-I

PRINTERS
 LITHOGRAPHERS
 ENGRAVERS

The _____
London
Printing and
Lithographing
Co'y, SUCCESSORS TO FREE PRESS PRINTING AND LITHO. DEPARTMENTS.

"OFFICE,
 "FREE PRESS"
 BUILDING.

BEST WORK
 AT MODERATE
 PRICES.

I-I-I-I-I-I-I-I-I-I

TEGUMSEH HOUSE
 LONDON.



Directly opposite G.T.R. depot; street railway past the doors; convenient to all the wholesale and retail business houses of city, making it the most desirable hotel in the city; elevator, and heated throughout with steam.

Porter in attendance on arrival of all trains.

RATES, \$2.00 AND \$2.50 PER DAY,

ACCORDING TO LOCATION.

No Extra Charge For Baggage.

C. W. DAVIS, PROP.

«Programme Continued.»

SATURDAY EVENING, MARCH 31,

Joaquin Miller's great picture of life on the plains, made famous by the Rankins throughout the world, entitled

"THE DANITES"

NOTE.—After the death of the Mormon Prophet, Joseph Smith, a band of Mormons called "Danites," or destroying angels, were commissioned by the Elders of their Church to destroy all who participated in the death of their Prophet, together with all members of their families, wives, mothers and children. This interesting drama is a faithful chronicle of that organization.

CAST OF CHARACTERS.

Nanney Williams,) The last of the doomed family,	IDA VAN CORTLAND
Billy Piper,) Hulda Brown, christened by the miners "The Widow".....	MAURET CROFTON
Silly Sloan, known as "Cap Tommy".....	NELLIE MORGAN
Betsy Hicks, called "Bunker Hill" by the boys,.....	SILENCE VYSE
Alexander Magee, "a poet," this man "Sandy," a painter, sculptor, a mighty moralist, a man who could not write his own name.....	HOWARD HALL
Charles Godfrey, a sailor from Boston, called "Parsons".....	ALBERT TAVERNIER
William Wise, elected "Judge" because he was fit for nothing else in this glorious climate of California.....	LEW A. WARNER
Thomas Adolphus Grosvenor, the miners called him "Lumber Tin" because he looked it.....	Geo. H. Howson
Grasshopper Jake, the cinnamon-haired keeper of the howling wilderness.....	F. A. MILLIS
Bill Hickman.....	Geo. H. Howson
Hezekiah Carter) The Danites	John E. Miles
Washee-Washee, a Chinaman.....	M. B. Streeter

SYNOPSIS.

ACT I—The dawn of day among the mountains, Sunday November 1857.
 ACT II—The "Howling Wilderness" Saloon.—An interval of a year supposed to have elapsed.
 ACT III—The Widow's Cabin of the Sierras, six months after.
 ACT IV—Sandy's Cabin. Home life among the mines. Second year of married life.
 ACT V—Billy Piper's log cabin among the great trees of the Golden Gulch on the following day.

NOTE.—Incidental to this play, specialties will be introduced in Act II by Mr. L. A. Warner, the I. V. C. Quartette and Mr. M. B. Streeter, and Miss Vyse will appear between Acts II and III.

EXECUTIVE STAFF FOR IDA VAN CORTLAND.

Tavernier Bros... Proprietors | M. B. Streeter, Stage Manager
 Albert Tavernier... Manager | F. Jmerson... Musical Director
 Frank L. Miles, Representative | Jas T. Myers... Calcium Lights
 F. A. Millis... Properties.

(Programme continued on last page.)

McLEAN'S HARDWARE

— FOR —

Bissell's Carpet Sweepers.

WE CAN SHOW YOU TWELVE DIFFERENT STYLES SAME AS ARE NOW DISPLAYED BY THE BISSELL COMPANY AT THE WORLD'S FAIR.

CALL AND SEE THESE GOODS

— AT —

McLEAN'S HARDWARE,
 151 Dundas Street.

A WONDER-WORKING

Quarter!

— IS A —
 25 CENT PIECE
 INVESTED IN **3** Elegant

GROTTO
BOUQUET

CIGARS

OF QUALITY AND AROMA, MADE OF EXCELLENT

HABANA FILLER,
 Very Mild and Delicious.

BRENER BROS.

