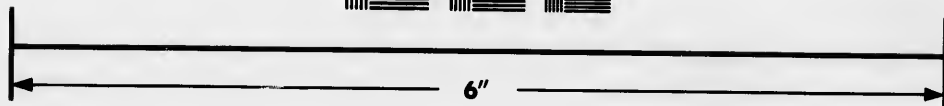
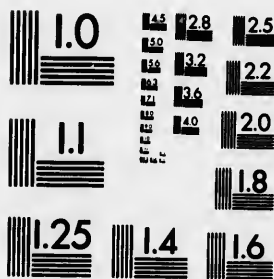


**IMAGE EVALUATION
TEST TARGET (MT-3)**



**Photographic
Sciences
Corporation**

23 WEST MAIN STREET
WEBSTER, N.Y. 14580
(716) 872-4503

**CIHM
Microfiche
Series
(Monographs)**

**ICMH
Collection de
microfiches
(monographies)**



Canadian Institute for Historical Microreproductions / Institut canadien de microreproductions historiques

© 1993

Technical and Bibliographic Notes / Notes techniques et bibliographiques

The Institute has attempted to obtain the best original copy available for filming. Features of this copy which may be bibliographically unique, which may alter any of the images in the reproduction, or which may significantly change the usual method of filming, are checked below.

L'Institut a microfilmé le meilleur exemplaire qu'il lui a été possible de se procurer. Les détails de cet exemplaire qui sont peut-être uniques du point de vue bibliographique, qui peuvent modifier une image reproduite, ou qui peuvent exiger une modification dans la méthode normale de filmage sont indiqués ci-dessous.

Coloured covers/
Couverture de couleur

Coloured pages/
Pages de couleur

Covers damaged/
Couverture endommagée

Pages damaged/
Pages endommagées

Covers restored and/or laminated/
Couverture restaurée et/ou pelliculée

Pages restored and/or laminated/
Pages restaurées et/ou pelliculées

Cover title missing/
Le titre de couverture manque

Pages discoloured, stained or foxed/
Pages décolorées, tachetées ou piquées

Coloured maps/
Cartes géographiques en couleur

Pages detached/
Pages détachées

Coloured ink (i.e. other than blue or black)/
Encre de couleur (i.e. autre que bleue ou noire)

Showthrough/
Transparence

Coloured plates and/or illustrations/
Planches et/ou illustrations en couleur

Quality of print varies/
Qualité inégale de l'impression

Bound with other material/
Relié avec d'autres documents

Continuous pagination/
Pagination continue

Tight binding may cause shadows or distortion along interior margin/
La reliure serrée peut causer de l'ombre ou de la distorsion le long de la marge intérieure

Includes index(es)/
Comprend un (des) index

Title on header taken from: /
Le titre de l'en-tête provient:

Blank leaves added during restoration may appear within the text. Whenever possible, these have been omitted from filming/
Il se peut que certaines pages blanches ajoutées lors d'une restauration apparaissent dans le texte, mais, lorsque cela était possible, ces pages n'ont pas été filmées.

Title page of issue/
Page de titre de la livraison

Caption of issue/
Titre de départ de la livraison

Masthead/
Générique (périodiques) de la livraison

Additional comments: /
Commentaires supplémentaires:

This item is filmed at the reduction ratio checked below /
Ce document est filmé au taux de réduction indiqué ci-dessous.

10X	14X	18X	22X	26X	30X
<input type="checkbox"/>	<input checked="" type="checkbox"/>	<input type="checkbox"/>	<input type="checkbox"/>	<input type="checkbox"/>	<input type="checkbox"/>
12X	16X	20X	24X	28X	32X

The copy filmed here has been reproduced thanks to the generosity of:

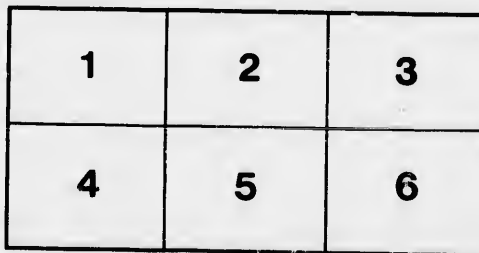
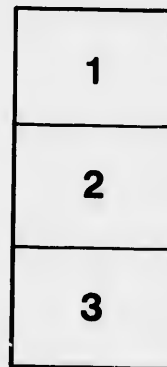
Harold Campbell Vaughan Memorial Library
Acadia University

The images appearing here are the best quality possible considering the condition and legibility of the original copy and in keeping with the filming contract specifications.

Original copies in printed paper covers are filmed beginning with the front cover and ending on the last page with a printed or illustrated impression, or the back cover when appropriate. All other original copies are filmed beginning on the first page with a printed or illustrated impression, and ending on the last page with a printed or illustrated impression.

The last recorded frame on each microfiche shall contain the symbol \rightarrow (meaning "CONTINUED"), or the symbol ∇ (meaning "END"), whichever applies.

Maps, plates, charts, etc., may be filmed at different reduction ratios. Those too large to be entirely included in one exposure are filmed beginning in the upper left hand corner, left to right and top to bottom, as many frames as required. The following diagrams illustrate the method:



L'exemplaire filmé fut reproduit grâce à la générosité de:

Harold Campbell Vaughan Memorial Library
Acadia University

Les images suivantes ont été reproduites avec le plus grand soin, compte tenu de la condition et de la netteté de l'exemplaire filmé, et en conformité avec les conditions du contrat de filmage.

Les exemplaires originaux dont la couverture en papier est imprimée sont filmés en commençant par le premier plat et en terminant soit par la dernière page qui comporte une empreinte d'impression ou d'illustration, soit par le second plat, selon le cas. Tous les autres exemplaires originaux sont filmés en commençant par la première page qui comporte une empreinte d'impression ou d'illustration et en terminant par la dernière page qui comporte une telle empreinte.

Un des symboles suivants apparaîtra sur la dernière image de chaque microfiche, selon le cas: le symbole \rightarrow signifie "A SUIVRE", le symbole ∇ signifie "FIN".

Les cartes, planches, tableaux, etc., peuvent être filmés à des taux de réduction différents. Lorsque le document est trop grand pour être reproduit en un seul cliché, il est filmé à partir de l'angle supérieur gauche, de gauche à droite, et de haut en bas, en prenant le nombre d'images nécessaire. Les diagrammes suivants illustrent la méthode.

qu'il
cet
de vue
ge
ation
ués



799
M76

RULES AND REGULATIONS

OF THE

MONTREAL

Engineer Rifle Association.



Montreal :

PRINTED BY S. C. KYTE, 663 CRAIG STREET.

1878.

A
GV 1163
.M632
1878

RU

No
as the
and s
Domi

No
encou
amon
of thi

No
two c

No
bersh
for th

No
ginee

RULES AND REGULATIONS.

—:o:—

No. 1.—This Association shall be known as the “Montreal Engineer Rifle Association,” and shall be affiliated with the Provincial or Dominion Associations.

No. 2.—It is formed for the purpose of encouraging and perfecting Rifle Shooting among the members of the Engineer Corps of this city.

No. 3.—This Association shall consist of two classes of members, Honorary and Active.

No. 4.—All applications for Honorary Membership shall come up before the Committee for their consideration and approval.

No. 5.—All members of the Montreal Engineers are eligible for membership, and shall

109132

be considered elected on payment of their subscription. A member of the Engineers shall mean a man who has been sworn in and signed the Service Roll.

No. 6.—No member of the Association shall be allowed to transfer his right of membership.

No. 7.—Members withdrawing from the Corps of Montreal Engineers shall cease to belong to the Rifle Association.

No. 8.—The Officers of the Association shall consist of a President, Vice-President, Secretary, Treasurer, and a Committee of eight, one-third of whom must be Commissioned Officers.

No. 9.—The Committee (the President, the Secretary, and Treasurer being *ex-officio* members) will be entrusted with the entire arrangement of the Annual Matches, &c., and all business of the Association.

No. 10.—At Committee Meetings five shall form a quorum, one of whom must be a Commissioned Officer.

No. 11.—Meetings of the Committee shall be called together by the Secretary, authorized by the President.

No. 12.—Meetings of the Association shall be called at the direction of the Committee, or on the requisition of seven members; at these meetings fifteen to form a quorum.

No. 13.—The Association shall hold a Prize Meeting in June or July, to be governed by the Wimbledon Regulations.

No. 14.—No man can fire in any match unless he has been a member of the Corps of Engineers for three months. Any man having joined the Corps of Engineers previous to the Annual Drill, must have attended, at least, one-half of the Drills, in order to be allowed

to fire in the ensuing Matches of the Association.

No. 15.—The Annual Meeting for the election of Officers, &c., shall be held on the first week in December.

No. 16.—The Annual Subscriptions of the members of the Association shall be due and payable on receipt of the Annual Drill Pay, and shall be on the following scale :

Lieut.-Colonel,	\$10.00
Major,	8.00
Captains,	6.00
Lieutenants,	5.00
2nd "	4.00
Sergeants,	0.75
Corporals and Sappers,	0.50
Honorary Members,	10.00

No. 17.—Honorary Members shall not be entitled to hold office, or to vote at any regular meeting ; and shall not be allowed to com-

pete at the Prize Meeting, except in the Association Match.

No. 18.—The weekly practice for members of the Association shall be free.

No. 19.—Any member may be expelled from the Association by a motion made to that effect and supported by a two-third vote, by ballot, of the members present at a general meeting. Notice of such motion to be given by the mover at the general meeting previous to that at which he intends to move it; and the Secretary shall immediately notify the member whom it is proposed to expel, that such notice of motion has been given.

No. 20.—At the Annual Matches no coaching shall be allowed.

No. 21.—In the event of no Annual Meeting taking place at the time fixed, such meeting shall be held as soon after as convenient; and the officers and members of the Manage-

ment Committee appointed at the last annual meeting shall hold office until their successors are elected. The Treasurer shall not hand over his books to the new Treasurer until they have been certified as correct by the Committee and President.

No. 22.—Members who do not pay their Annual Subscription within one month after the same becomes due, shall cease to belong to the Association.

No. 23.—The Secretary shall give due notice of Special and General Meetings.

No. 24.—The expense incurred for notifying members shall be paid out of the funds of the Association.

No. 25.—The only Rifles allowed shall be Snider, Government issue.

No. 26.—The foregoing Rules and Regulations shall not be altered, except by a two-third vote of a General Meeting.

FIELD RULES.

1. All parties firing must select one of their number to act as Captain, who will be responsible for, and have the power to enforce, the due observance of order and the correct keeping of the score, which he will certify and hand to the Secretary for registration. All members firing will be subject to his orders.

2. To prevent accidents, Captains of Squads will not allow any member to load till he goes forward to the firing-point to shoot.

