

**CIHM
Microfiche
Series
(Monographs)**

**ICMH
Collection de
microfiches
(monographies)**



Canadian Institute for Historical Microreproductions / Institut canadien de microreproductions historiques

© 2000

Technical and Bibliographic Notes / Notes techniques et bibliographiques

The Institute has attempted to obtain the best original copy available for filming. Features of this copy which may be bibliographically unique, which may alter any of the images in the reproduction, or which may significantly change the usual method of filming are checked below.

- Coloured covers / Couverture de couleur
- Covers damaged / Couverture endommagée
- Covers restored and/or laminated / Couverture restaurée et/ou pelliculée
- Cover title missing / Le titre de couverture manque
- Coloured maps / Cartes géographiques en couleur
- Coloured ink (i.e. other than blue or black) / Encre de couleur (i.e. autre que bleue ou noire)
- Coloured plates and/or illustrations / Planches et/ou illustrations en couleur
- Bound with other material / Relié avec d'autres documents
- Only edition available / Seule édition disponible
- Tight binding may cause shadows or distortion along interior margin / La reliure serrée peut causer de l'ombre ou de la distorsion le long de la marge intérieure.
- Blank leaves added during restorations may appear within the text. Whenever possible, these have been omitted from filming / Il se peut que certaines pages blanches ajoutées lors d'une restauration apparaissent dans le texte, mais, lorsque cela était possible, ces pages n'ont pas été filmées.
- Additional comments / Commentaires supplémentaires:

L'Institut a microfilmé le meilleur exemplaire qu'il lui a été possible de se procurer. Les détails de cet exemplaire qui sont peut-être uniques du point de vue bibliographique, qui peuvent modifier une image reproduite, ou qui peuvent exiger une modification dans la méthode normale de filmage sont indiqués ci-dessous.

- Coloured pages / Pages de couleur
- Pages damaged / Pages endommagées
- Pages restored and/or laminated / Pages restaurées et/ou pelliculées
- Pages discoloured, stained or foxed / Pages décolorées, tachetées ou piquées
- Pages detached / Pages détachées
- Showthrough / Transparence
- Quality of print varies / Qualité inégale de l'impression
- Includes supplementary material / Comprend du matériel supplémentaire
- Pages wholly or partially obscured by errata slips, tissues, etc., have been refilmed to ensure the best possible image / Les pages totalement ou partiellement obscurcies par un feuillet d'errata, une pelure, etc., ont été filmées à nouveau de façon à obtenir la meilleure image possible.
- Opposing pages with varying colouration or discolourations are filmed twice to ensure the best possible image / Les pages s'opposant ayant des colorations variables ou des décolorations sont filmées deux fois afin d'obtenir la meilleure image possible.

This item is filmed at the reduction ratio checked below /
Ce document est filmé au taux de réduction indiqué ci-dessous.

	10x		14x		18x		22x		26x		30x	
							✓					
	12x		16x		20x		24x		28x		32x	

The copy filmed here has been reproduced thanks to the generosity of:

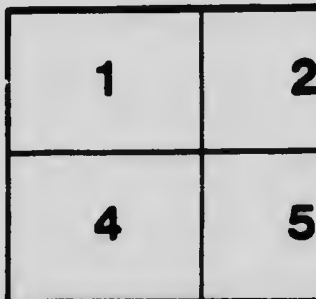
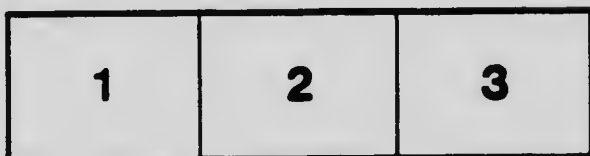
Archives of Ontario
Toronto

The images appearing here are the best quality possible considering the condition and legibility of the original copy and in keeping with the filming contract specifications.

Original copies in printed paper covers are filmed beginning with the front cover and ending on the last page with a printed or illustrated impression, or the back cover when appropriate. All other original copies are filmed beginning on the first page with a printed or illustrated impression, and ending on the last page with a printed or illustrated impression.

The last recorded frame on each microfiche shall contain the symbol \rightarrow (meaning "CONTINUED"), or the symbol ∇ (meaning "END"), whichever applies.

Maps, plates, charts, etc., may be filmed at different reduction ratios. Those too large to be entirely included in one exposure are filmed beginning in the upper left hand corner, left to right and top to bottom, as many frames as required. The following diagrams illustrate the method:



L'exemplaire filmé fut reproduit grâce à la générosité de:

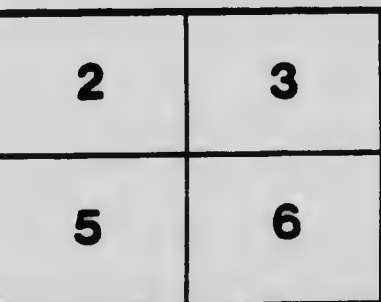
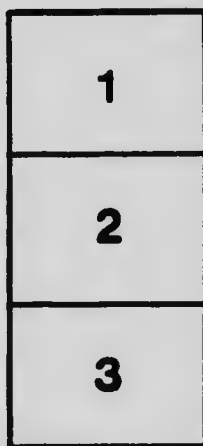
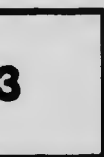
Archives publiques de l'Ontario
Toronto

Les images suivantes ont été reproduites avec le plus grand soin, compte tenu de la condition et de la netteté de l'exemplaire filmé, et en conformité avec les conditions du contrat de filmage.

Les exemplaires originaux dont la couverture en papier est imprimée sont filmés en commençant par le premier plat et en terminant soit par la dernière page qui comporte une empreinte d'impression ou d'illustration, soit par le second plat, selon le cas. Tous les autres exemplaires originaux sont filmés en commençant par la première page qui comporte une empreinte d'impression ou d'illustration et en terminant par la dernière page qui comporte une telle empreinte.

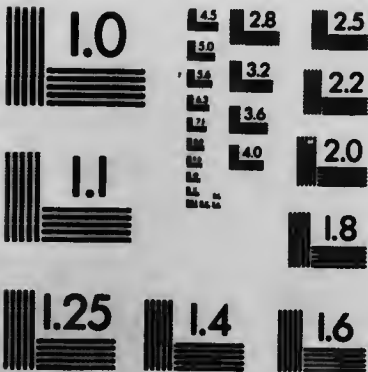
Un des symboles suivants apparaîtra sur la dernière image de chaque microfiche, selon le cas: le symbole \rightarrow signifie "A SUIVRE", le symbole ∇ signifie "FIN".

Les cartes, planches, tableaux, etc., peuvent être filmés à des taux de réduction différents. Lorsque le document est trop grand pour être reproduit en un seul cliché, il est filmé à partir de l'angle supérieur gauche, de gauche à droite, et de haut en bas, en prenant le nombre d'images nécessaire. Les diagrammes suivants illustrent la méthode.



MICROCOPY RESOLUTION TEST CHART

(ANSI and ISO TEST CHART No. 2)



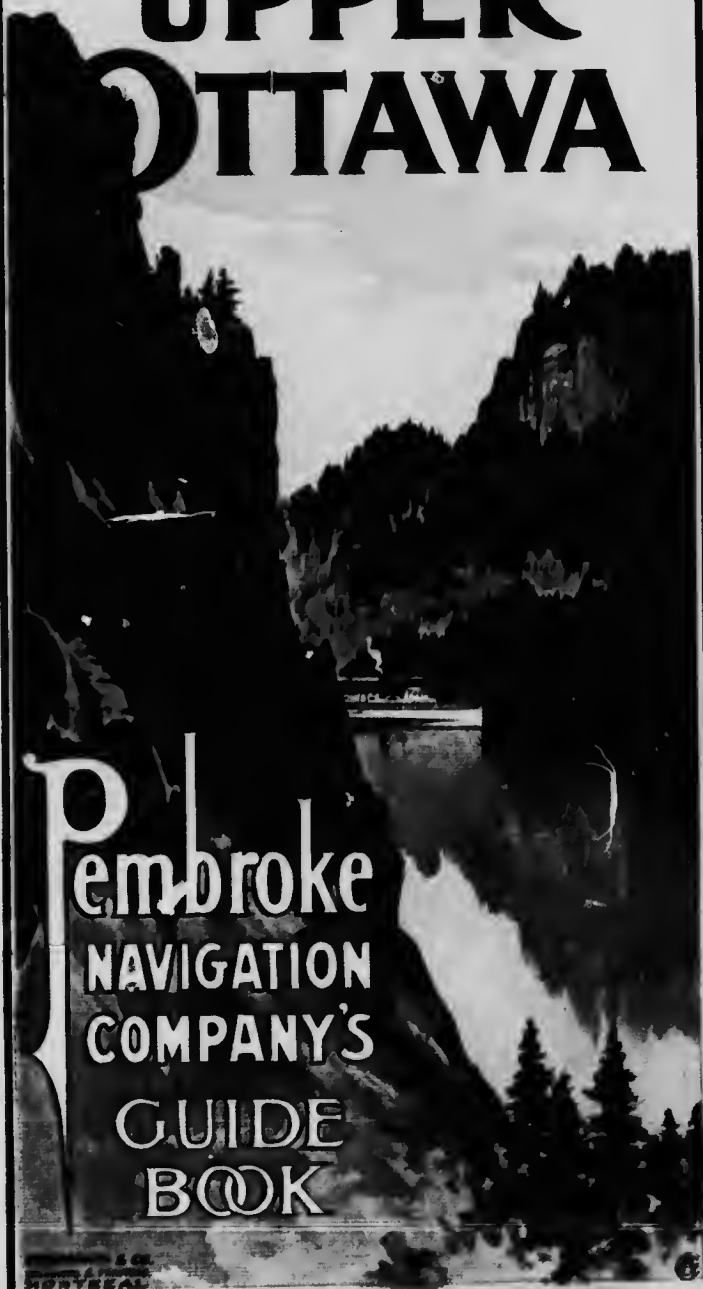
APPLIED IMAGE Inc

1653 East Main Street
Rochester, New York 14609 USA
(716) 482 - 0300 - Phone
(716) 298 - 5009 - Fax



THE LAKES AND
MOUNTAINS OF

THE UPPER OTTAWA



Pembroke
NAVIGATION
COMPANY'S
GUIDE
BOOK

MONTEAL



CHOCOLATES

For people who want the best, Original sealed packages. Quality and weight guaranteed. Sold everywhere.

The Harry Webb Co., Limited
TORONTO

By appointment purveyors to His Excellency
the Governor-General.

The Peterborough Canoe Co.



CANOES

OF ALL SORTS
DESIGNED
AND BUILT

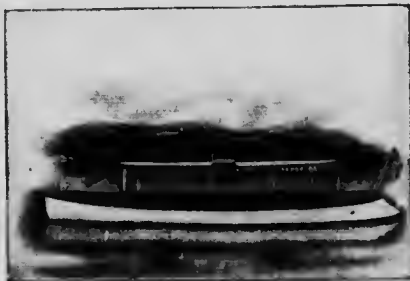


Our record is of the highest

BOATS AND SKIFFS

Peterborough - Ontario

The Defiance Gasoline Engine



The newest and most up-to-date motor on the market. It stands without a peer—Engines that will run at any and at all times.

ECONOMY
SIMPLICITY
DURABILITY

We can furnish you with Launches of almost any description. COMPLETE outfits of the best makers.

Full details will be furnished on application

The Defiance Iron Works Company, Limited
CHATHAM, ONT.

THE LAKES AND
MOUNTAINS OF

The Upper Ottawa

Reached by the
Pembroke Navigation Co.



DIRECTORS OF THE
PEMBROKE
NAVIGATION CO.

W. R. WHITE, K.C., President
J. COCKBURN, Vice-President
J. CHAPMAN & T. PINK
GEO. SCHMIDT, Managing-
Director and Secretary - Treasurer

FOR SPECIAL RATES
FOR TOURISTS AND
EXCURSIONS
APPLY TO MANAGER



Pamph
n.d.
P
no. 12



Pembroke on the Ottawa River.

The Upper Ottawa

A more beautiful summer trip cannot be found in America to compare with the route of the Upper Ottawa River between Pembroke and Des Joachims—a run of forty-five miles through unrivalled scenery, combining the loveliness of the famous Thousand Islands with the grandeur of the celebrated Saguenay. The magnificent steel steamer "Victoria," operated by the Pembroke Navigation Company, Limited, makes regular trips between the two points mentioned.



Rapides des Joachims.

The tired and overworked denizen of the city and the man who has that "tired feeling" can find rest, health and happiness in this beautiful district. The pine-clad hills of the Laurentians permeate the air with health-giving ozone, and renewed vigour is given to all who visit the region. No gorgeous palaces are in evidence to sully the view, and nothing mars the natural beauty and grandeur of the scenery. Capital boating and fishing can be had all along the route. The shores along the river are bold and rocky, and rise to quite a height on both sides, crowned with immense pines, many of which throw their branches far over the water.

affording shelter alike from sun and sudden shower. Pebbly beaches furnish excellent landing-places for row-boats. The surface of the river is broken up with hundreds of islands, scattered irregularly, so as to present to the tourist who may be drifting over it an ever-varying series of enchanting views. Now the boat glides safely along under some rocky shore, so near that you may seize the down-stooping



On Indian River, Pembroke.

forest branches. Anon some tranquil inlet opens, revealing the primitive fisherman's snug cottage and his trimly-painted skiff curtesying to the waves in some protecting nook. Again the scene assumes more wild and primitive features—craggy ledges grown green, opposing the gale, bold promontories surmounted by trees of gigantic proportions, long reaches of glimmering sand-beach; and then there are forests, embowered coves and grassy openings that have known no changes save such as Nature



Indian Point Hunt Club, Ottawa River.

has wrought for ages, inviting them to their cool retreats. In short, the tourist may sail through this labyrinth of scenic grandeur amidst ever varying but always interesting surroundings.

The Hotel Pontiac, at Fort William, has been enlarged and improved, and will be open early in the season. At this point there are miles of beautiful sand-beach where children can bathe with perfect safety. Magnificent pine-groves and all that is calculated to give rest to the weary, are found here.

There is equally good fishing and boating, and pleasant drives on shady avenues cut through the forest. In close contiguity, the river is dotted with islands, and the scene is one that attracts the eye of the



Georgian Bay Canal Route, Upper Ottawa.



Main Street, Pembroke.

artist and the lover of Nature. There is always a breeze blowing off the river in the daytime, and in the evening the air is cool and pleasant, the odor of the pines giving that quietive and health-giving feeling that makes one satisfied with the world and himself.

The fifty mile stretch of the Ottawa River between Pembroke and Des Joachims has long been known as one of the grandest and most beautiful sheets of water in North America. For twenty-two miles after leaving Pembroke, the river expands into a magnificent sheet of water, over a mile in width, known as Lac-des-Allumettes, studded with innumerable islands, through which the steamer



The Copeland House, Pembroke.



A Day's Sport.

"Victoria" threads her way, disclosing new beauties at every turn, with the background of the blue Laurentian mountains in the distance, forming a scene of natural beauty as yet unspoiled by the hand of man, and that cannot be found in the older tourist routes in Canada.

At the upper end of the lake, Deep River begins, and for over twenty-five miles the mighty current of the Ottawa sweeps between the grand Laurentides on the Quebec side and the almost equally bold and rugged Ontario shore. A succession of mighty masses of primitive rocks covered with primeval forest shut out the busy world and bring the traveller in closest touch with all the grandeur and sublimity of Nature in her wildest form. The management have added another steamer to their fleet. This boat will be open for charter, special trips, excursions, etc.



Black River Falls.

Points of Interest.

PETEWAWA.—Ten miles from Pembroke, the Petewawa River debouches into the Ottawa—here studded with hundreds of lovely islands. The "Hotel Petewawa" has been erected by Teevans and Hill in one of the most beautiful pine groves on the Ottawa, and good bass and doré fishing is to be had among the countless channels of rapid water rushing between the rocky islets.

MILITARY CAMP.—The New Military Camp, established last season by the Dominion Government, at Petewawa, gives a new attraction and adds life and interest to the scene. No more magnificent site for a military training camp exists in the whole



Artillery Park, Petewawa.

Dominion. The camp ground is an ideal spot and, with the artillery range, extends for 10 miles along the bluffs overlooking the broad Ottawa. The military authorities intend to have several thousand men of all branches of the service trained here during next summer. The view from the artillery range is simply magnificent. A bird's-eye view is had of the Ottawa here between three and four miles wide and each island and tiny islet can be distinctly seen for ten miles east and west. The blue Laurentian hills to the north forming a background to a scenic picture unsurpassed in the Dominion.

FORT WILLIAM, thirteen miles from Pembroke,



Pay-day at Pettewawa Camp.

is an old Hudson Bay Company post, where for many years the annual gatherings of the Algonquin tribes were held.

At CHALK RIVER, immediately opposite, and among the numerous islets to the east of the fort, black bass, pickerel and maskinongé are caught in great numbers, and every brook, streamlet and inland lake swarm with speckled trout.

Just after entering Deep River, the OISEAU ROCK is seen—a bold mass of solid rock presenting a perpendicular face of over five hundred feet in height to the waters of the Ottawa, which lave its mighty base. An easy trail has been cut whereby tourists can ascend to the top of this rock and enjoy a view of lake, river and woodland scenery unsurpassed anywhere. A pavilion has been erected



A Few of the Guns at Pettewawa Camp.

near Oiseau Rock, which is at the disposal of excursionists.

The SCHYAN RIVER debouches into Deep River a few miles further up, and here may be found grand bass and trout fishing. At Point Alexander,



Part of Black River Chute.
Seat of Power of Pembroke Electric Light Co.

picnic parties have a beautiful grove at their disposal, where a few hours can be spent pleasantly between the up and down trips of the steamer. Rapides-des-Joachims is at the end of the steamboat route. Here is a quite a village, with good hotels, stores, etc., and an old Hudson Bay Company post. The Ottawa cleaves its way through the Laurantian hills, and, over a succession of falls of remarkable beauty, enters the Deep River stretch at right angles and rushes straight across, striking the base of a mighty hill on the north-bank.

This trip is beyond question one of the finest in the world for the lover of what is beautiful and grand in Nature. The air is pure and invigorating, and a few days spent along this route will amply repay the tourist who is wearied of the monotony and sameness of nearly all the "popular" tourist routes of travel. Over these same waters, nearly four hundred years ago, paddled the great French explorer Champlain, searching for the way to China and the Golden East, and the region is full of the historicity of these times.

Connection with the Pembroke Navigation Company's steamer is made with the Canadian Pacific Railway or Grand Trunk Railway at Pembroke.

Pembroke is a flourishing town of over 5,000 inhabitants, a wide-awake place, and capital headquarters for the tourist and sportsman.

The Munro Blocks (two) are the finest in Pembroke. The Bank of Ottawa occupies commodious quarters in one of these blocks. This bank is progressive and is prepared to give every facility, consistent with good banking, to the stranger.

The Copeland House, of which we give an illustration, is well equipped to handle tourist business. It has been completely refurnished, is heated by steam and has modern sanitary arrangements. It is lighted by electricity, has a good table and comfortable rooms, and is situated within a short distance of the Grand Trunk Railway and the Canadian Pacific Railway depots. The hotel accommodates about one hundred persons. For further information write F. Burke, manager.

Cecile's Hotel (The Windsor) is also comfortable, it is near the Canadian Pacific Railway and the Grand Trunk Railway stations, and close to the Ottawa river. It has superior facilities, and will be found a satisfactory residence.

The Adelphi Café is a restaurant of a superior order. Private dining-rooms may be had for parties, in fact the general arrangement is of a character rarely met with outside the large cities; the cuisine will surprise the visitor in its excellence. Every encouragement should be given to enterprises of this class.

Richelieu & Ontario Navigation Co.

"Niagara to the Sea"

Palatial Steamers between Toronto, Rochester, Kingston, Thousand Islands, Montreal, Quebec, Murray Bay, Tadoussac and points on the Far-famed Saguenay. :: :: :: :: ::

For particulars, apply to

THOS. HENRY,

Traffic Manager, MONTREAL, Can.

General Information.

PENETANGUISHENE.—Lovers of yachts may here devote with great pleasure a visit to the large manu-



facturing establishment of H. E. Gilday & Co., where a complete plant turns out yachts, skiffs and canoes of an exceptionally high order. In connection is a large machine shop

where they make the gasoline engines—these two bear a very high reputation. The extent and completeness of this whole factory is exceptional, and a visit will well repay anyone fond of a good yacht.

BUFFALO.—

When in Buffalo, tourists will find the Iroquois one of the finest hotels on the continent. It caters to the best class of travellers, and every comfort and convenience will there be found. The illustration gives a faint idea of this splendid edifice.



The Iroquois, at Buffalo.

NEW YORK.—The Broadway Central is situated in the heart of New York. The location is unequalled for sight-seeing or business; it is a well



The Broadway Central, New York.

managed and well appointed hotel. Rates, American plan, \$2.50 and upwards; European plan, \$1.00 and over. Address the management, 666 to 677 Broadway.

THE
Magnificent Upper Ottawa

IS REACHED BY

Canadian
Pacific
Railway

From Ottawa and Montreal

Direct without change.

**From Quebec, Boston,
and New York**

Close connections via Montreal. (Additional routes from New York are via Prescott and Ottawa, or Brockville and Carleton Junction.)

**From Toronto, Hamilton,
Niagara Falls, Buffalo, Etc.**

Via Sharbot Lake, Kingston & Pembroke Ry. and Renfrew.

FOR FULL INFORMATION WRITE

A. M. ACHESON,
Station Agent.

A. JOHNSTON,
Town Agent, Pembroke.

C. E. E. USSHER,
General Passenger Agent,
Montreal.

Henry J. Sims & Co.

MAKERS OF

Fine Furs

A complete stock of made-up furs of newest designs
always on view in our showrooms.
Special prices to tourists.

110 Sparks Street - OTTAWA

HURD & McBRIDE

FISHING TACKLE,
SPORTING GOODS,
TALKING
MACHINES,
ATHLETIC GOODS



'PHONE 3397

191 Sparks Street, OTTAWA

Jewellery or Watch Repairs

Left with the captain or our representative on
steamer will receive prompt and
careful attention.

Souvenirs of Pembroke, Petawawa, Fort William and the Upper
Ottawa may be obtained on SS. Victoria or at our store.

R. B. HARRISON - - Jeweller

Main St. West, PEMBROKE, Ont.

M. HOWE

Groceries & Supplies

Correspondence
carefully attended
to. No details
overlooked.

CHOICEST WINES,
WHISKIES, ETC.

CIGARS—Imported and Domestic.

PEMBROKE, - - ONTARIO

IF YOU NEED A GOOD BEVERAGE

ASK FOR
Labatt's
 (LONDON)

13 Gold,
 Silver and
 Bronze
 Medals

14
 Diplomas

ALE OR PORTER

Pure Wholesome Canadian Beverages.
 For sale at all Wine Merchants, Clubs and Hotels.



Notice to Tourists
 WHEN IN OTTAWA

FOR

**Souvenir
 Goods and
 Diamonds**

GO TO

McMILLAN'S
 82 Sparks Street
Jeweller & Optician

**Tuckett's
 Club Special Cigars**

Just a little larger, a little better and a
 little dearer than TUCKETT'S MAR-
 GUERITE CIGARS, the sales of
 which exceed a "million a month."

W. A. Hunter & Sons
CHOICE GROCERIES
PROVISIONS, ETC. . .

Clubs, Campers and Cottagers supplied. Careful attention
 to shipments; prompt and accurate. We supply nearly
 all the Fishing and Game Clubs in this district.

Pembroke, Ont.

J. B. LALIBERTE

Largest
Manufacturer
of

Fine Furs

QUEBEC,
Canada

I N C A N A D A

Uniform excellence
of finish and
workmanship
throughout

Tourists visiting Quebec are cordially
invited to visit our vast establishment

FINEST FUR PARLORS IN AMERICA

High-Grade Furs our Specialty

INDIAN CURIOSITIES

Stop at our stores on your way to the Falls of
Montmorency and St. Anne de Beaupré



THE WONDERFUL

"AUTO-MAKE MOTOR"

\$37.50

Engine only

Weight 37½ lbs.
Height 11½ in.

Convert
Your Row
Boat into
a Launch

*Licensed under Joseph Day's Patent,
August 6th, 1895.
Other patents pending.*

Rated at 1½ h.p. Has shown nearly 2 h.p. No valves, gears, springs or
cams. Jump spark. Reversible. Speed control. Only three moving
parts. Could not be made better if it cost five times as much. **ORDER
NOW**—they are selling so fast you may be disappointed later.

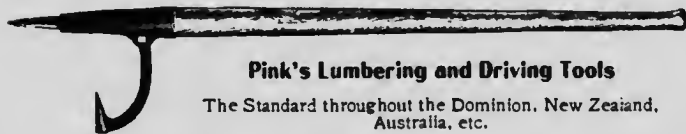
Auto-Marine Motors from 1 to 20 h.p.

DETROIT AUTO-MARINE CO.

39 E. Congress Street - - - DETROIT, Mich.

Thomas Pink FOUNDER, BLACKSMITH,
PEMBROKE, ONT. MACHINIST

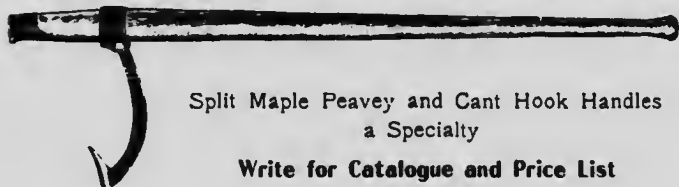
Steamboat and Mill Repairs, full line of Steamfittings in Stock, at lowest prices



Pink's Lumbering and Driving Tools

The Standard throughout the Dominion. New Zealand,
Australia, etc.

Peaveys, Cant Hooks, Boom Chains, Boat Winches, Capstans, Pike Poles



Split Maple Peavey and Cant Hook Handles
a Specialty

Write for Catalogue and Price List

J. B. Gordon



THE DRUG STORE

One of the best in Northern Canada

High-Class
Confectionery,
Cigars, Etc.

KODAKS AND SUPPLIES,
TOILET ARTICLES, . . .

Pembroke, Ontario

ANDREW JOHNSTON

Represents the Leading Fire
Insurance Companies.

Standard Life Assurance
Company of Edinburgh, also
Accident, Plate Glass, Marine
and Employers' Liability
Insurance.
Agent Dominion Express Co.



TOWN TICKET OFFICE

Canadian Pacific Ry. Co.
Pembroke Navigation Co
Canadian Pacific Railway
Line Steamships,
Allan Line Steamships,
Dominion Line Steamships.

Tickets to all parts of the World

Freeman Block, PEMBROKE, Ontario.

M. J. O'Callaghan

 TEL. 179

CHEMIST AND DRUGGIST

Toilet Articles,
High-Class Confectionery,
G. & B. Chocolates.

Cigars, Tobacco, Pipes and Smokers' sundries.
Prescriptions accurately compounded.

West End,
PEMBROKE

WALTER BEATTY

All kinds of Mouldings
and Builders' Supplies.
Estimates Furnished
on application.

Builder and Contractor

Sash, Door, and Blind Manufacturer

PEMBROKE, - - - - ONTARIO





