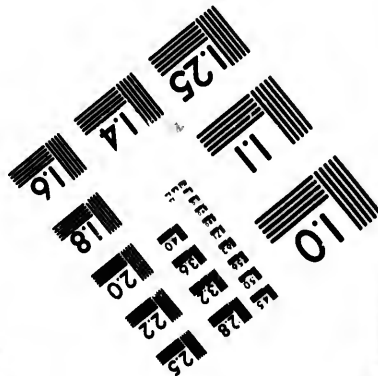
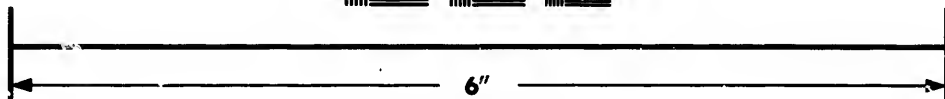
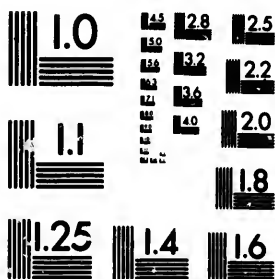


# IMAGE EVALUATION TEST TARGET (MT-3)



Photographic  
Sciences  
Corporation

23 WEST MAIN STREET  
WEBSTER, N.Y. 14580  
(716) 872-4503

**CIHM/ICMH  
Microfiche  
Series.**

**CIHM/ICMH  
Collection de  
microfiches.**



**Canadian Institute for Historical Microreproductions / Institut canadien de microreproductions historiques**

**© 1985**

# Technical and Bibliographic Notes/Notes techniques et bibliographiques

The Institute has attempted to obtain the best original copy available for filming. Features of this copy which may be bibliographically unique, which may alter any of the images in the reproduction, or which may significantly change the usual method of filming, are checked below.

- ☐ Coloured covers/  
Couverture de couleur
- ☐ Covers damaged/  
Couverture endommagée
- ☐ Covers restored and/or laminated/  
Couverture restaurée et/ou pelliculée
- ☐ Cover title missing/  
Le titre de couverture manque
- ☐ Coloured maps/  
Cartes géographiques en couleur
- ☐ Coloured ink (i.e. other than blue or black)/  
Encre de couleur (i.e. autre que bleue ou noire)
- ☐ Coloured plates and/or illustrations/  
Planches et/ou illustrations en couleur
- ☐ Bound with other material/  
Relié avec d'autres documents
- ☐ Tight binding may cause shadows or distortion  
along interior margin/  
La reliure serrée peut causer de l'ombre ou de la  
distortion le long de la marge intérieure
- ☐ Blank leaves added during restoration may  
appear within the text. Whenever possible, these  
have been omitted from filming/  
Il se peut que certaines pages blanches ajoutées  
lors d'une restauration apparaissent dans le texte,  
mais, lorsque cela était possible, ces pages n'ont  
pas été filmées.
- ☐ Additional comments:/  
Commentaires supplémentaires:

L'Institut a microfilmé le meilleur exemplaire qu'il lui a été possible de se procurer. Les détails de cet exemplaire qui sont peut-être uniques du point de vue bibliographique, qui peuvent modifier une image reproduite, ou qui peuvent exiger une modification dans la méthode normale de filmage sont indiqués ci-dessous.

- ☐ Coloured pages/  
Pages de couleur
- ☐ Pages damaged/  
Pages endommagées
- ☐ Pages restored and/or laminated/  
Pages restaurées et/ou pelliculées
- ☒ Pages discoloured, stained or foxed/  
Pages décolorées, tachetées ou piquées
- ☐ Pages detached/  
Pages détachées
- ☒ Showthrough/  
Transparence
- ☐ Quality of print varies/  
Qualité inégale de l'impression
- ☐ Includes supplementary material/  
Comprend du matériel supplémentaire
- ☐ Only edition available/  
Seule édition disponible
- ☐ Pages wholly or partially obscured by errata  
slips, tissues, etc., have been refilmed to  
ensure the best possible image/  
Les pages totalement ou partiellement  
obscurcies par un feuillet d'errata, une pelure,  
etc., ont été filmées à nouveau de façon à  
obtenir la meilleure image possible.

This item is filmed at the reduction ratio checked below/  
Ce document est filmé au taux de réduction indiqué ci-dessous.

10X	12X	14X	16X	18X	20X	22X	24X	26X	28X	30X	32X
				✓							

The copy filmed here has been reproduced thanks to the generosity of:

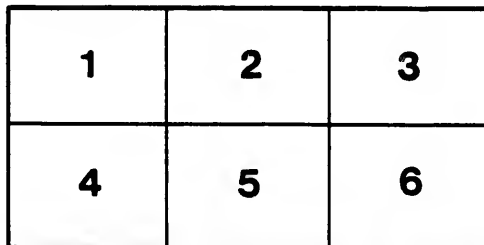
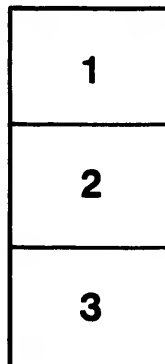
Seminary of Quebec  
Library

The images appearing here are the best quality possible considering the condition and legibility of the original copy and in keeping with the filming contract specifications.

Original copies in printed paper covers are filmed beginning with the front cover and ending on the last page with a printed or illustrated impression, or the back cover when appropriate. All other original copies are filmed beginning on the first page with a printed or illustrated impression, and ending on the last page with a printed or illustrated impression.

The last recorded frame on each microfiche shall contain the symbol ➡ (meaning "CONTINUED"), or the symbol ▼ (meaning "END"), whichever applies.

Maps, plates, charts, etc., may be filmed at different reduction ratios. Those too large to be entirely included in one exposure are filmed beginning in the upper left hand corner, left to right and top to bottom, as many frames as required. The following diagrams illustrate the method:



L'exemplaire filmé fut reproduit grâce à la générosité de:

Séminaire de Québec  
Bibliothèque

Les images suivantes ont été reproduites avec le plus grand soin, compte tenu de la condition et de la netteté de l'exemplaire filmé, et en conformité avec les conditions du contrat de filmage.

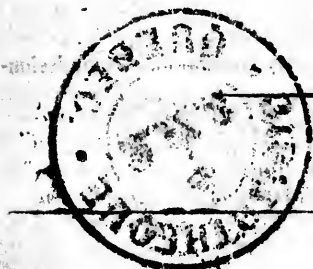
Les exemplaires originaux dont la couverture en papier est imprimée sont filmés en commençant par le premier plat et en terminant soit par la dernière page qui comporte une empreinte d'impression ou d'illustration, soit par le second plat, selon le cas. Tous les autres exemplaires originaux sont filmés en commençant par la première page qui comporte une empreinte d'impression ou d'illustration et en terminant par la dernière page qui comporte une telle empreinte.

Un des symboles suivants apparaîtra sur la dernière image de chaque microfiche, selon le cas: le symbole ➡ signifie "A SUIVRE", le symbole ▼ signifie "FIN".

Les cartes, planches, tableaux, etc., peuvent être filmés à des taux de réduction différents. Lorsque le document est trop grand pour être reproduit en un seul cliché, il est filmé à partir de l'angle supérieur gauche, de gauche à droite, et de haut en bas, en prenant le nombre d'images nécessaire. Les diagrammes suivants illustrent la méthode.

211 113 Arts & Manufactures No 1

**THE CELEBRATED**  
**PATENT**  
**FIRE-PROOF PAINT,**  
**CALLED**  
**ROSS' PATENT**  
**ARTIFICIAL SLATE;**  
**AND**  
**METALLIC PAINTS,**  
**BLACK, PURPLE, AND RED.**



Agent.

**HALIFAX:**  
**PRINTED BY JAMES BOWES & SON, 6 BARRINGTON ST.**  
**1854.**

# THE CELEBRATED Patent Fire - Proof Paint,

CALLED

**ROSS' PATENT ARTIFICIAL SLATE;**

AND

## METALLIC PAINTS, BLACK, PURPLE, AND RED.

THE above Manufactures have received the HIGHEST TESTIMONIALS ever offered to the Public in favour of any Colonial Manufacture. Among the numerous and highly respectable Certificates, voluntarily given, we refer to the following:—

Professor A. A. HAYS, State Assayer, Massachusetts.  
W. & R. WRIGHT, Ship Builders and Owners, St. John, N. B.  
ROBERT G. MORAN, do do do.  
G. F. THOMPSON, Painter, do do.  
WM. PARKS & SON, Owners, "Maid of Erin," do do.  
THOMAS PARKS, do do do.  
STEWART & NEIL, Fredericton, N. B.  
GEORGE BUIST, Manager of Gas Works, Halifax, N. S.  
The Hon. JAMES B. UNIACKE, Attorney General and Commissioner of Public Buildings, Halifax, N. S.  
JAMES H. MOSHER, Painter, Novelty Works, New York.  
JONATHAN G. HARDING, Fredericton, New Brunswick.  
THOMAS H. SEGEE, do do do.  
THOMAS M. CROW AND OTHERS, Truro.  
ARCHIBALD SCOTT, Insurance Office, Halifax.  
DAVID PAGE, Truro.  
DANIEL LEPSON, Painter, Baltimore,  
J. B. JORDAN, " " "  
WILLIAM GRAHAM, " " "  
BENJAMIN HUGER, Col. U. S. A., Baltimore,  
JAMES B. McNUTT, Onslow.

### OPINIONS OF THE PRESS.

*British North American*, Halifax; *Sun*, Halifax; *Recorder*, Halifax;  
*New Brunswick*, St. John, N. B.; *Gazette*, Montreal.

PATENT ARTIFICIAL SLATE,  
AND  
UNCHANGEABLE METALLIC PAINTS.

PROOF AGAINST FIRE AND WATER.

Manufactured by the Proprietor, in Colchester, Nova Scotia.

THE above Manufactures have been upwards of three years generally used in the British Provinces and the United States, and in no instance is the Patentee aware that they fail to give entire satisfaction; and he has every reason to believe they excel all other pigments for protecting Iron, Wood, and Masonry from the decaying and corroding influences of the atmosphere; whilst the "Artificial Slate" has been submitted to the severest tests in cases of fire, and in every instance has resisted the devouring element, until such portions of the building *as were not covered with the Slate*, were totally consumed. An instance of this nature was very recently communicated to the Manufacturer by J. W. M. Irish, Esquire, of St. John, N. B.—his letter bears date 30th June, 1852. The following is an extract:—

"I have just seen Thomas Stewart, the Agent at Fredericton for the Slate and Paint; he states that a Mr. Segee, about five miles below that place got a quantity of the Slate from him last year, and covered the roof of his house himself, and that his barns, standing not more than 30 yards from the house, took fire from the woods a short time since. Both barns were burnt; although the roof of the house was covered with sheets of fire, and the ends also ignited, *the roof did not*; and he is satisfied the house must have burnt, if the Slate had not been on. This Mr. Segee stated in Mr. Stewart's shop, before a number of respectable individuals, and he is one himself.—Mr. Stewart has promised to get a certificate to this effect."

With such gratifying proof of the security afforded by the "Artificial Slate" against the devouring element, the Manufacturer, with entire confidence, rests the patronage which he thinks he has established, upon the merits of his discovery against every spurious article, purporting by fraudulent puffs to possess the qualities of his manufacture.

The *Black Metallic Paint* is now for the first time offered as an article of *surpassing excellence*. The accompanying Certificates from practical Painters, who must necessarily use the best of paints for Carriages, testify to this important fact.

## PROSPECTUS.

THE *ARTIFICIAL SLATE* is the product of a mixture of mineral substances known to be the best *non-conductors* of heat, as well as the most indestructible, the chemical affinity of which converts the surfaces of materials covered into a *coating of actual slate*—proof against *FIRE* and *WATER*. Thus the laws of Nature are made to accomplish results as surprising as they are useful, by rendering Wooden fabrics as durable as Brick or Stone, and less pervious to moisture; and consequently preventing decay and destruction from corroding influences, hitherto supposed unattainable.

The *METALLIC PAINTS*, *Purple* and *Red*, are offered as *Weather* and *Water proof solely*. Their base being Iron, secures them from galvanic action, so fatal to lead, and other paints on *Iron* work; and their chemical combination makes it impossible that any change should take place from atmospheric influence, or the action of salt water and sulphuretted hydrogen, so prevalent in sea-ports and tidal harbours. They surpass all paints yet discovered in *Cheapness* and *Durability*, which render them pre-eminently adapted to the covering of all kinds of Iron Work, such as *Shipping, Mills, Bridges, Steam Machinery, Railway Cars, and Iron Railways*. The *METALLIC PAINTS* have been analysed by Prof. Hays of Boston. The following is an extract from his Certificate:—

“As a permanent pigment, this mineral must rank with the most *indestructible* and *unchangeable* bases. For covering Metallic Ware, its composition shews that it is eminently fitted.

(Signed) “AUGT. A. HAYS, *State Assayer*.

## DIRECTIONS.

*ARTIFICIAL SLATE*: Mix the powder with pure Boiled or Raw Linseed Oil and a little Spirits of Turpentine, to the consistency of very thick paint, and apply with a common brush, being careful to keep the mixture well stirred while putting it on. One pound will cover ten square feet with two coats.

If Shingles have been on for years, it will be necessary to weeps off the moss and lint with a stiff broom. Two or three coats of this material will make a perfect Slate Roof, proof against Fire and Water.

☞ The Metallic Paints are mixed and put on like ordinary paint.

JOHN ROSS, Patentee.



CERTIFICATES.

CERTIFICATES.

Truro, Nov. 5, 1853.

To John Ross, Esquire, Patentee of Artificial Slate & Metallic Paints.

Sir,—We the Subscribers, House Joiners and Painters, by trade, having been using your "Artificial Slate" for upwards of three years deem it a pleasing duty to express our opinion, that this composition far exceeds any other paint for covering the Roofs of Houses,—apart from its *fire proof* quality its value for protecting wood from the decaying influence of the weather is exceedingly important. We know of many buildings covered with *sawed* shingles painted with Artificial Slate, which have stood the test of summer heat and winter cold, which are now as smooth, as when first laid—the whole roof appears to be *cemented* together, impervious to moisture and consequently not subject to decay.

We regard the application of "Artificial Slate" to *sawed* shingles as a matter of great economic value, and feel desirous that it should be generally known that *sawed* shingles so covered are superior in point of finish and durability, to those split and shaved—We are sir, yours, &c.

GEORGE COOK,  
SAMUEL J. BLAIR,  
RICHARD UPHAM,  
FRANCIS LAYTON,  
GEORGE GUNN,

THOS. M. CROW,  
D. B. FLETCHER,  
SYDNEY S. CROW,  
DAVID C. WILSON.

Onslow, 28th July, 1851.

Sir,—I have tried your *Black* Metallic Paint, and have much pleasure in stating that it is an excellent article, having all the qualities of a good paint except being a little coarse,—this fault can be easily remedied.

John Ross, Esq., Truro. Yours, &c., JAS. B. McNUTT, Painter.

Mr. Ross.

Truro, Aug. 2d, 1852.

Sir,—Having tried your *Black* Paint, I find it good; and if properly ground, will not only answer well for Ships' use, but will answer well for Carriage painting. Your Brown I regard as a superior article,—both well worthy of public patronage.

Yours, &c. DAVID PAGE, Car. Painter.

J. W. M. Irish, Agent.

St. John, June 24, 1850.

Dear Sir,—We have much pleasure in saying, agreeably to your request—and we hope it will assist you in bringing the "Patent Metallic Iron Paint" favourably under the notice of Shipowners generally—that we have had several new vessels painted with the Purple, and found it all that it is represented by the Patentee's printed circular. One of our vessels was painted with it in October last; she went from here to Liverpool, from Liverpool to Mobile; and in April last saw her in the latter port, looking more like having come out of the painter's hand than having performed the voyages just mentioned.—Yours, &c.,

WM. & R. WRIGHT, Shipbuilders and Owners.

St John, N. B., June 26, 1850.

John Ross, Esq., Patentee of the Purple Metallic Iron Paint.

Sir,—I have just painted a new ship with your Metallic Iron Paint, and I have much pleasure in stating, that I never painted a ship with so small a quantity of paint and oil, and look so well. From its adhesive qualities, and the manner it covers the wood, I have no doubt but it will be more durable, and much cheaper, than any other paint used for such purposes; and would recommend it to the public generally.

Yours, &c.,

ROBERT G. MORAN,

John Ross, Esq.

St. John, N. B., July 20, 1850.

Sir—I have lately painted a new Brig with your Purple Metallic Iron Paint: and have much pleasure in stating, that I never painted a vessel to look so well at so small a cost; I am fully persuaded it is the best article in use for Ship or Iron Work, and would recommend it to the public generally. It only wants to be tried, to prove its cheapness and durability.

Yours, &c.,

JOHN KIRK.

John Ross, Esq.

St. John, N. B., July 28, 1850.

Sir,—I have used your Patent Metallic Paint, and find it has given perfect satisfaction; I think it is a superior article for any work exposed to the action of salt water, as it stands and wears well in any climate. I do highly recommend it for Ship Work, Iron-covered Buildings, &c.

The Artificial Slate Paint, if it was more generally used, we would have less fires in our city than we have had; it also preserves the shingles from rot. The cheapness of your Paints is highly in their favor, if nothing else.

G. F. THOMPSON, Painter.

John Ross, Esq.

Sir,—We have much pleasure in bearing testimony to the superior qualities of your Metallic Paint. We tried it on the Steamer *Maid of Erin*, in March, and since on our new ship the *Lady Blaney*. We consider it cheaper and more durable than any other paint we have ever used.

WM. PARKS & SON, } Owners *Maid of Erin*.  
THOMAS PARKS, }

Mr. J. W. M. Irish.

Frederickton, N. B., Nov. 13, 1850.

Dear Sir—Please send us two more barrels of your Artificial Slate. We have seen some of the good effects of it at the last fire. Some of the roofs covered with it did not catch at all; and when the walls were burnt, some of the roof came down in one piece, and others were the means of saving the building,—especially one roof, alongside of the Bank B. N. A., which also was the means of saving the Bank.

Please see that it is on board the first boat, as it might be neglected and stored.—Your obedient Servants,

STEWART & NEIL.

John Ross, Esq.

Gas Works, Halifax, N. S., November 12, 1850.

Dear Sir,—It affords me much pleasure to bear testimony to the great superiority which I consider your Patent Metallic Paint possesses over lead. I have painted our gasholders, with red lead paint regularly every spring, for the last three years; and no sooner were they immersed in the water contained in the tanks, than I observed thee fleets of the ammonia, marking the depth to which it had been in the water. This continued until spring again, by which time it almost became white. I painted them this last spring with your Metallic Paint, and cannot yet observe any difference of color. The part which goes among the water remains the same color as that which does not. From its adhesive quality, as well as clearness, I consider it superior to any thing I have ever seen for Iron Work. I have also used the Artificial Slate Paint, and have no hesitation in saying that (if used as directed by your circular,) it is destined to be THE Paint for Wooden Buildings.

GEORGE BUIST, Manager.

Mr. John Ross.

Novelty Works, New York, Dec. 6, 1850.

Sir.—I take pleasure in certifying that I have used your Patent Purple Metallic Paints for upwards of eighteen months, chiefly upon our boilers for steamships; and find that it will dry quicker, last longer, get harder, and stand fire or heat better than any other paint I have used.

JAMES H. MOSHER, Painter.

Mr. John W. M. Irish.

Fredericton.

Dear Sir,—Understanding that you are an agent for Ross' Fire-proof Paint, and having myself witnessed its efficacy as a preservative against fire, I beg leave, for the benefit of the public generally, to state a case relating to it, which came under my notice during the great fire in Fredericton, in the autumn of 1850. I had a house destroyed, the roof of which had, about three months previous, been twice coated with Ross' Fire Proof Paint. In consequence of the high wind which prevailed at the time, the roof was covered with sheets of burning shingles. The house was surrounded with fire on all sides; it penetrated into every part of the interior, and I noticed the fire working its way inside between the edges of the boards on the roof, where is usually in this country left a space of two or three inches. These spaces the fire occupied and burnt through the shingles from underneath. This was the appearance of the roofs taking fire. I did not at any time observe the fire take effect on the surface of the roof. I have frequently thought of addressing you on this subject, but have deferred doing so from time to time.—I am, Dear Sir, most respectfully, your obedient servant,

JONATHAN G. HARDING.

Halifax, 10th Aug., 1852.

At the instance of His Excellency Sir John Harvey, Lieutenant Governor of Nova Scotia, I applied Ross' "Artificial Slate," of the consistency of paint to a wall built against and retaining a bank, to prevent moisture oozing through and destroying the masonry, and found it fully answer that purpose. I applied it in the spring of 1851.

JAMES B. UNIACKE,

Attorney General, and Commissioner of Public Buildings.

Mr. Thomas Stewart, Fredericton.

Agent for Ross' Patent Artificial Slate Paint.

Dear Sir,—Having purchased a quantity of Ross' Patent Fire-proof Paint from you last season, and covered the roof of my house with it, I deem it a duty to acquaint the public that my barns took fire from the woods, in the month of June, and stood within thirty yards of the house. The barns were burnt; the house took fire at each end, where I could put it out from the windows in the end, while the roof was covered with sheets of live embers, which had no effect on the shingles whatever; and I attribute the safety of the house solely to being covered with the above Fire-proof Paint; and I should recommend every person to cover all wooden buildings with that material, as a preventive of fire and preservative of wood.

THOMAS H. SEGEE.

## IMPORTANT ECONOMY.

Archibald Scott, Esq.

Halifax, 12th July, 1853.

Dear Sir,—As the Agent of various "Fire Insurance Companies," I beg to bring under your notice my "PATENT ARTIFICIAL SLATE." This composition has been upwards of three years extensively used in New Brunswick, Newfoundland, Prince Edward's Island, the Canadas, and Nova Scotia, principally for covering shingled roofs, as you will perceive by the accompanying circulars of certificates. It has been severely tested, and proved, most successfully, fire proof qualities under most extraordinary circumstances; so much so, that I am of opinion that Fire Insurance Companies should encourage its general application to all kinds of wood building (where the color would be no objection to its being used, such as the back walls of dwellings in the city, outhouses, ware-houses, &c., as well as the roofs) by lowering the premium of insurance on such buildings as are covered.

I have the honor to be, sir,

Your obedient servant,

J. W. Ross, Patentee and Manufacturer.

Halifax, 14th July, 1853.

Sir,—In answer to your note of the 12th inst., I consider the use of your "Artificial Slate Paint" on shingled Roofs, as greatly diminishing the risk against Fire—I have frequently reduced the premiums on Buildings in the Country, upon its application,

I am, sir, your ob'dt serv't,

ARCHIBALD SCOTT,

Insurance Agent.

John Ross, Esq., Halifax.

## NEW AND IMPORTANT TO RAILROAD PROPRIETORS.

MESSE<sup>RS</sup>. THOMPSON & OUDESLUYS—*Gentlemen*: It affords me great pleasure to testify to the excellency of Ross's Colchester Metallic Paint, supplied by you for this Company's use. I have used the purple and tried it extensively for twelve months on the cars, iron roofs and bridges of the Baltimore and Ohio Railroad Company, and can safely recommend it for that kind of work to be as good as any I ever used. I have never tried it fairly on wood, but have every reason to believe it will suit any kind of work, and for body and durability it cannot be surpassed.

DANIEL LEPSON: Foreman Paint Shop, Balt. & Ohio R. R. Co.  
Mount Clare Depot, Baltimore, Oct. 14, 1853.

MR. J. B. JORDAN, who has used this Paint largely on the line of the Baltimore and Ohio Railroad, says it is the *best* of the kind he has ever met with, and he has tested a number of kinds.

Baltimore, October 11th, 1853.

MESSE<sup>RS</sup>. THOMPSON & OUDESLUYS—*Gentlemen*: I have used the Ross Colchester Purple Metallic Paint, purchased from you, on the decks of the ships Powhatan, and Isabella, belonging to this port, and after a trial of twelve months, find it the best article of the kind for the decks of vessels I have ever met with.

Yours, respectfully,

WILLIAM GRAHAM.

Harper's Ferry Armory, October 18th, 1853.

MESSE<sup>RS</sup>. THOMPSON & OUDESLUYS—*Gentlemen*: I procured from you some years since "Ross' Colchester Metallic Paint," and used it on a metallic roof at Fort Monroe. I found it to answer well, and during the year it was under my observation it bore exposure to the weather in that climate. From this favourable result I was induced to try it on the metallic roofs of the large workshops at this place, in the fall of 1851 and spring of 1852. These roofs are now well covered, and the workmen report it superior to any similar paint heretofore used.

I have also used it extensively in painting the exterior walls of brick buildings, for which purpose it seems to answer very well. A longer period of time would of course test its durability more fully. With my present experience (about two years) of it, I am of opinion that it is economical and useful.

Very respectfully, your ob'dt servant,

BENJ. HUGER, Col. U. S. A. Com'g.

## OPINIONS OF THE PRESS.

**HOME PRODUCTION.—Hurrah for Nova Scotia!**—See the communication to Mr. Ross, in another column. It is to such men as Mr. Ross this country will owe a lasting debt of gratitude, for developing her hidden treasures. We wish we had more like him. Colchester may well be proud of her wealth and her men.—*British North American*.

**ROSS' METALLIC PAINTS.**—We have already called public attention to the high estimation in which the Metallic Paints manufactured by John Ross, Esq., Truro, are held by those who have occasion to use them. Certificates of a highly satisfactory character, in praise of these articles of Provincial manufacture, appear elsewhere, in this issue; and from information afforded by parties who have similarly applied them, we can safely endorse the opinions therein contained.—*Halifax Sun*.

**PATENT ARTIFICIAL SLATE AND UNCHANGEABLE METALLIC PAINTS.**—We have much pleasure in directing the attention of our readers to an advertisement, in another column, of J. Ross, Esq., of Truro, Nova Scotia, the Patentee of the above excellent material for the preservation of both wood and metals. Mr. Ross has expended large sums of money in developing the mineral resources of Colchester, and we are heartily glad that this discovery promises to prove alike valuable and remunerating. To shipowners, in particular, the Metallic Paints are destined to be of prime value. The certificates of parties who have experimented with these Paints afford ample ground for the strongest recommendation of so valuable an ingredient as the Patentee advertises. We hope to have some certificates from the shipowners of our port soon, to add to the growing celebrity of this newly discovered compound. Of its value as a fire-proof ingredient, we learn that too much cannot be said; and so soon as its virtues have been a little more tested and generally known, its effects will be to reduce premiums wherever it is used. It has lately been proposed in England to erect a species of cheap tombstone for the poorer classes, to be composed of a plaistic earth called "terra cotta." Upon these erections, it is further proposed, by moveable types, to effect cheap inscriptions previously to the clay being baked. The idea has struck us that a juniper slab, well coated with this slate, to be colored as required, might constitute a monument of a most durable character; and inscriptions might be effected upon the slating in the way above intimated, by moveable types. Why not?—*Halifax Recorder*.

**PATENT ARTIFICIAL SLATE AND UNCHANGEABLE METALLIC PAINTS.**—A short time ago we called attention to the Patent Artificial Slate and Unchangeable Metallic Paints, proof against Fire and Water, manufactured by John Ross, Esq., in Colchester, Nova Scotia. Since then these valuable articles have been extensively used in this city; and it will be seen by advertisement in our columns to-day, that they have received the approbation of a number of our merchants and most practical men. The discovery is certainly entitled to our warm approbation, and cannot fail to be attended with the most important advantages to the community. The extreme cheapness and durability of these articles, their easy application to the purpose intended, and the excellence of the materials, all conspire to render the Artificial Slate and the Metallic Paints invaluable for covering houses and ships. We would direct attention to the certificates in favour of these articles, and every information can be had on application to J. W. M. Irish, Esq., General Agent for New Brunswick.—*New Brunswick*.

We would direct the attention of our readers to the notice in this day's issue, of Messrs. G. B. Symes & Co., with reference to the Metallic Paints and Artificial Slate, manufactured by the Patentee, in Colchester, Nova Scotia. The value of these commodities cannot be over-rated, if they possess the properties which they are said to produce with reference to the protection

they afford from the devouring ravages of fire; and we have every reason to believe, from the testimonials we have seen, that it has done good-service in Fredericton during the great fire of 1850.

The government has pursued a wise policy in admitting, *duty free*, an article of such economical value into this wooden colony; and we are pleased to see that the consumers reap the benefit of that concession, as it will be perceived that the Patentee and manufacturer has at once reduced the price of the article to the extent of the duty heretofore imposed. The opinions of the press in Nova Scotia and New Brunswick are exceedingly favourable. Space will only permit us to copy one extract, from the *British North American*.

"It is to such men as Mr. Ross this country will owe a lasting debt of gratitude, for developing her hidden treasures. Colchester may well be proud of her wealth and her men."—*Quebec Chronicle*.

THE patentee and manufacturer of the Fire-proof Composition called "Artificial Slate," John Ross, Esq. of Colchester, Nova Scotia, has placed on our table a small pamphlet, giving a brief statement of the nature of this composition. The constituents seem well selected to attain the object in view, viz: To prevent decay and destruction from the corroding influences of the atmosphere and from fire. Thus wooden buildings may be rendered about as durable as brick or stone, and less pervious to moisture.

The testimony of a host of highly respectable merchants in St. John, Fredericton, and Halifax, together with what we know of the constituents of this commodity, as non-conductors of heat and their imperishable nature, and the adhesive qualities of the oxides of iron, to bind them to the material covered, induce us to recommend it to the public, in Montreal, particularly, to give Mr. Ross' Composition a fair trial.

The policy of admitting such an article *from the Sister Colony free of duty*, is worthy of all praise. We trust that during the present Session of Parliament, further encouragement will be given to Colonial Manufactures, by a revision of our tariff based upon that policy.

Iron roof covering expands when exposed to heat, the consequence is, that it curls up, and gives the fire opportunity to ignite the boards underneath. Tin roofs, too, if covered with two or three coats of Mr. Ross' Composition, would not heat so suddenly and similar consequences would be avoided. It cannot cost much to make a trial; we should like to see some one try the experiment.

The certificates, which will be found in another column, but more particularly the one from the "Novelty Works," New York, after a trial of 18 months upon *Ocean Steam Boilers*, are conclusive evidence of the value of this compound, in resisting the action of fire.—*Montreal Gazette*.

## HIGHLY IMPORTANT.

### Colonial Manufacture—A Chemical Compound

CALLED

### ROSS' PATENT ARTIFICIAL SLATE, AND UNCHANGEABLE METALLIC PAINTS.

**Proof against Fire and Water!**

MANUFACTURED IN COLCHESTER, NOVA SCOTIA.

**A** FRESH SUPPLY of the above celebrated *FIRE-PROOF PAINTS* will arrive by the Steamer *Albatross*, on her return from Halifax, and in consequence of these articles being in future admitted **FREE** of Duty, a deduction equal to the Duties formerly imposed will be made to parties purchasing not less than a ton.

Certificates from gentlemen of well known respectability in Nova Scotia and New Brunswick, among which is that of the Hon. J. B. Uniacke, Attorney General and Commissioner of Public Buildings in Nova Scotia, have induced His Excellency the Governor General of Canada, in Council, to admit these important productions from Nova Scotia into this Province duty free, as will appear by the following communication, received by the manufacturer, now in this city, from the Hon. R. S. M. Bouchette, Comptroller of Customs.

*DEALERS IN PAINTS* will alike consult their own interest, and promote the generous policy of the Government, by keeping on hand a constant supply of the **GENUINE** article, which can be had **ONLY** from Messrs. G. B. Symes & Co., at as low a price as those spurious articles, wrongfully said to possess similar qualities.

G. B. SYMES & Co.

Quebec, Aug. 28, 1852.

[Copy.]—No. 1.

{ J. G. O. CUSTOMS DEPARTMENT,  
Quebec, 27th Aug., 1852.

Sir.—Your Communication to His Honor the Administrator of the Government of Nova Scotia, on the subject of the introduction into Canada, duty free, of Metallic Paints and Artificial Slate, by you, having been transmitted to the Governor General of this Province, by the Hon. Joseph Howe, Provincial Secretary of Nova Scotia, on the 26th ult., I have the honour by command, to inform you, that, the Inspector General having submitted your application to the favourable consideration of His Excellency in Council, it has appeared to His Excellency, that the important purposes to which it seems the articles in question may be applied, render it desirable that those articles should be admitted into this Province duty free.

A notice will appear in the next issue of the *Official Gazette*, declaring Metallic Paints, and Artificial Slate, being the products or manufacture of Nova Scotia, admissible into this Province free of duty.

I have the honour to be,

Sir,

Yours, &c.,

[Signed] R. S. M. BOUCHETTE.

John Ross, Esq.



Bibliothèque,  
Le Séminaire de Québec.  
3, rue de l'Université.

Quebec & QUEBEC  
BROSSE & BROSSE,  
KENNETH M'KENZIE,  
GEO. T. HASZARD,  
GEORGE SYMES,  
BURNS & CO.,  
GEORGE F. BOWN,

And may be obtained in the Country from the following gentlemen:—

W. & E. W. DIMOCK,  
MAYHEW BECKWITH, Esq., M.P.P.  
AVERY B. PIPER,  
GEORGE RUNCIMAN & SON,  
JAMES CROWLEY,  
WILLIAM H. MOODY,  
WILLIAM GORDON,  
J. W. DELANEY, Esq.,  
ARCHIBALD M'DONALD,  
BENJAMIN H. CALKIN,  
J. CHASE,  
JAMES FRASER, Esq.,  
H. R. & D. M'KENZIE,  
J. J. MARSHALL, Esq., M.P.P.  
JAS. A. LONG,  
A. N. WHITMAN,  
WM. CORBET, Esq.,  
JOHN CAMPBELL, Esq., M.P.P.  
JOHN HECKMAN, Esq.,  
STEPHEN FULTON, Esq., M.P.P.  
FRANCIS BOURNEUF, Esq., M.P.P.  
LEVI BORDEN,  
J. B. DICKIE,  
— LOGAN,  
JAS. G. M'KEEN,



Halifax.  
Charlottetown, P. E. Island.  
Quebec, Canada.  
St. John's, N. F.

Windsor.  
Cornwallis.  
Bridgetown.  
Annapolis.  
Digby.  
Yarmouth.  
Pictou  
Amherst.  
Arichat, C. B.  
Kentville.  
Wolfville.  
New Glasgow.  
Pigonish.  
Manchester.  
Guysborough.  
Cape Canso.  
Sydney, C. B.  
Liverpool, N. S.  
Lunenburg.  
Wallace.  
Clare.  
Pugwash.  
Upper Stewiacke.  
Tatamagouche.  
Plaister Cove, C. B.

J. W. M. IRISH,

St. John,  
Sole Agent for New Brunswick.)

And may be had from the following Gentlemen:—

THOMAS STEWART,  
W. F. BONNELL,  
JUSTUS WETMORE,  
DIMOCK & WILSON,  
ZACHARIAH CHIPMAN,  
JOHN ALEXANDER,  
JOSEPH SALTER,  
JOSEPH HICKMAN,  
JOSEPH ALLISON,

Fredericton.  
Gagetown.  
St. George's.  
St. Andrew's.  
St. Stephen's.  
Campobello.  
Bend of Petitcodiac.  
Dorchester.  
Sackville.



