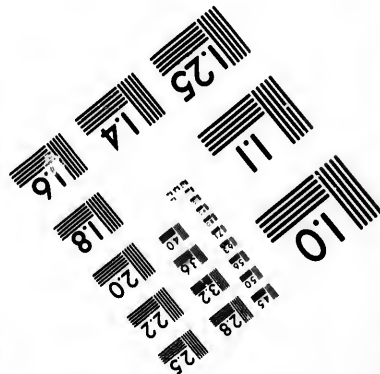
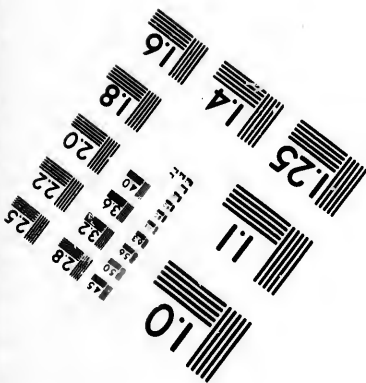
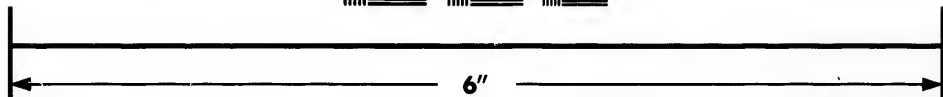
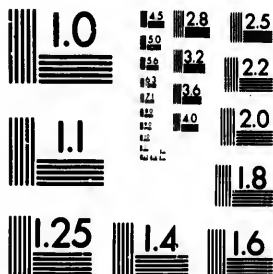


**IMAGE EVALUATION
TEST TARGET (MT-3)**



**Photographic
Sciences
Corporation**

23 WEST MAIN STREET
WEBSTER, N.Y. 14580
(716) 872-4503

**CIHM/ICMH
Microfiche
Series.**

**CIHM/ICMH
Collection de
microfiches.**



Canadian Institute for Historical Microreproductions / Institut canadien de microreproductions historiques

© 1985

Technical and Bibliographic Notes/Notes techniques et bibliographiques

The Institute has attempted to obtain the best original copy available for filming. Features of this copy which may be bibliographically unique, which may alter any of the images in the reproduction, or which may significantly change the usual method of filming, are checked below.

L'Institut a microfilmé le meilleur exemplaire qu'il lui a été possible de se procurer. Les détails de cet exemplaire qui sont peut-être uniques du point de vue bibliographique, qui peuvent modifier une image reproduite, ou qui peuvent exiger une modification dans la méthode normale de filmage sont indiqués ci-dessous.

- | | |
|--|--|
| <input type="checkbox"/> Coloured covers/
Couverture de couleur | <input type="checkbox"/> Coloured pages/
Pages de couleur |
| <input type="checkbox"/> Covers damaged/
Couverture endommagée | <input type="checkbox"/> Pages damaged/
Pages endommagées |
| <input type="checkbox"/> Covers restored and/or laminated/
Couverture restaurée et/ou pelliculée | <input type="checkbox"/> Pages restored and/or laminated/
Pages restaurées et/ou pelliculées |
| <input type="checkbox"/> Cover title missing/
Le titre de couverture manque | <input checked="" type="checkbox"/> Pages discoloured, stained or foxed/
Pages décolorées, tachetées ou piquées |
| <input type="checkbox"/> Coloured maps/
Cartes géographiques en couleur | <input type="checkbox"/> Pages detached/
Pages détachées |
| <input type="checkbox"/> Coloured ink (i.e. other than blue or black)/
Encre de couleur (i.e. autre que bleue ou noire) | <input checked="" type="checkbox"/> Showthrough/
Transparence |
| <input type="checkbox"/> Coloured plates and/or illustrations/
Planches et/ou illustrations en couleur | <input type="checkbox"/> Quality of print varies/
Qualité inégale de l'impression |
| <input checked="" type="checkbox"/> Bound with other material/
Relié avec d'autres documents | <input type="checkbox"/> Includes supplementary material/
Comprend du matériel supplémentaire |
| <input type="checkbox"/> Tight binding may cause shadows or distortion
along interior margin/
La reliure serrée peut causer de l'ombre ou de la
distorsion le long de la marge intérieure | <input type="checkbox"/> Only edition available/
Seule édition disponible |
| <input type="checkbox"/> Blank leaves added during restoration may
appear within the text. Whenever possible, these
have been omitted from filming/
Il se peut que certaines pages blanches ajoutées
lors d'une restauration apparaissent dans le texte,
mais, lorsque cela était possible, ces pages n'ont
pas été filmées. | <input type="checkbox"/> Pages wholly or partially obscured by errata
slips, tissues, etc., have been refilmed to
ensure the best possible image/
Les pages totalement ou partiellement
obscurcies par un feuillet d'errata, une pelure,
etc., ont été filmées à nouveau de façon à
obtenir la meilleure image possible. |
| <input checked="" type="checkbox"/> Additional comments: /
Commentaires supplémentaires: | Title page is a photoreproduction. |

This item is filmed at the reduction ratio checked below/
Ce document est filmé au taux de réduction indiqué ci-dessous.

10X	12X	14X	16X	18X	20X	22X	24X	26X	28X	30X	32X
						✓					

The copy filmed here has been reproduced thanks to the generosity of:

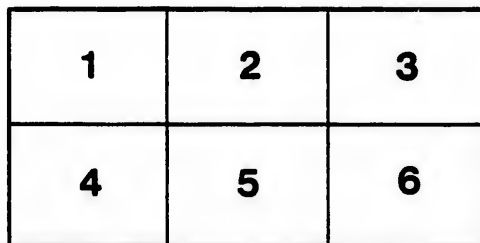
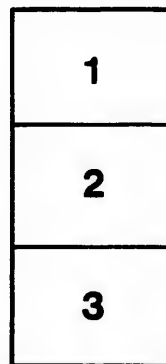
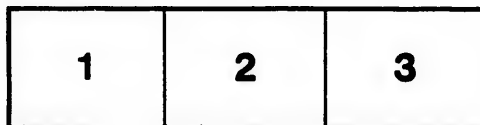
Medical Library
McGill University
Montreal

The images appearing here are the best quality possible considering the condition and legibility of the original copy and in keeping with the filming contract specifications.

Original copies in printed paper covers are filmed beginning with the front cover and ending on the last page with a printed or illustrated impression, or the back cover when appropriate. All other original copies are filmed beginning on the first page with a printed or illustrated impression, and ending on the last page with a printed or illustrated impression.

The last recorded frame on each microfiche shall contain the symbol \rightarrow (meaning "CONTINUED"), or the symbol ∇ (meaning "END"), whichever applies.

Maps, plates, charts, etc., may be filmed at different reduction ratios. Those too large to be entirely included in one exposure are filmed beginning in the upper left hand corner, left to right and top to bottom, as many frames as required. The following diagrams illustrate the method:



L'exemplaire filmé fut reproduit grâce à la générosité de:

Medical Library
McGill University
Montreal

Les images suivantes ont été reproduites avec le plus grand soin, compte tenu de la condition et de la netteté de l'exemplaire filmé, et en conformité avec les conditions du contrat de filmage.

Les exemplaires originaux dont la couverture en papier est imprimée sont filmés en commençant par le premier plat et en terminant soit par la dernière page qui comporte une empreinte d'impression ou d'illustration, soit par le second plat, selon le cas. Tous les autres exemplaires originaux sont filmés en commençant par la première page qui comporte une empreinte d'impression ou d'illustration et en terminant par la dernière page qui comporte une telle empreinte.

Un des symboles suivants apparaîtra sur la dernière image de chaque microfiche, selon le cas: le symbole \rightarrow signifie "A SUIVRE", le symbole ∇ signifie "FIN".

Les cartes, planches, tableaux, etc., peuvent être filmés à des taux de réduction différents. Lorsque le document est trop grand pour être reproduit en un seul cliché, il est filmé à partir de l'angle supérieur gauche, de gauche à droite, et de haut en bas, en prenant le nombre d'images nécessaire. Les diagrammes suivants illustrent la méthode.

ails
du
odifier
une
mage

rata
o

elure,
à

32X

Ca

Martin, C. F.
Keenan, C. B.

A CASE OF TYPHOIDAL CHOLECYSTITIS WITH
CHOLELITHIASIS.

BY

C. F. MARTIN, B.A., M.D.,

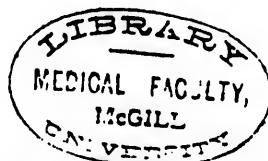
Lecturer on Medicine, McGill University; Assistant Physician, Royal Victoria
Hospital.

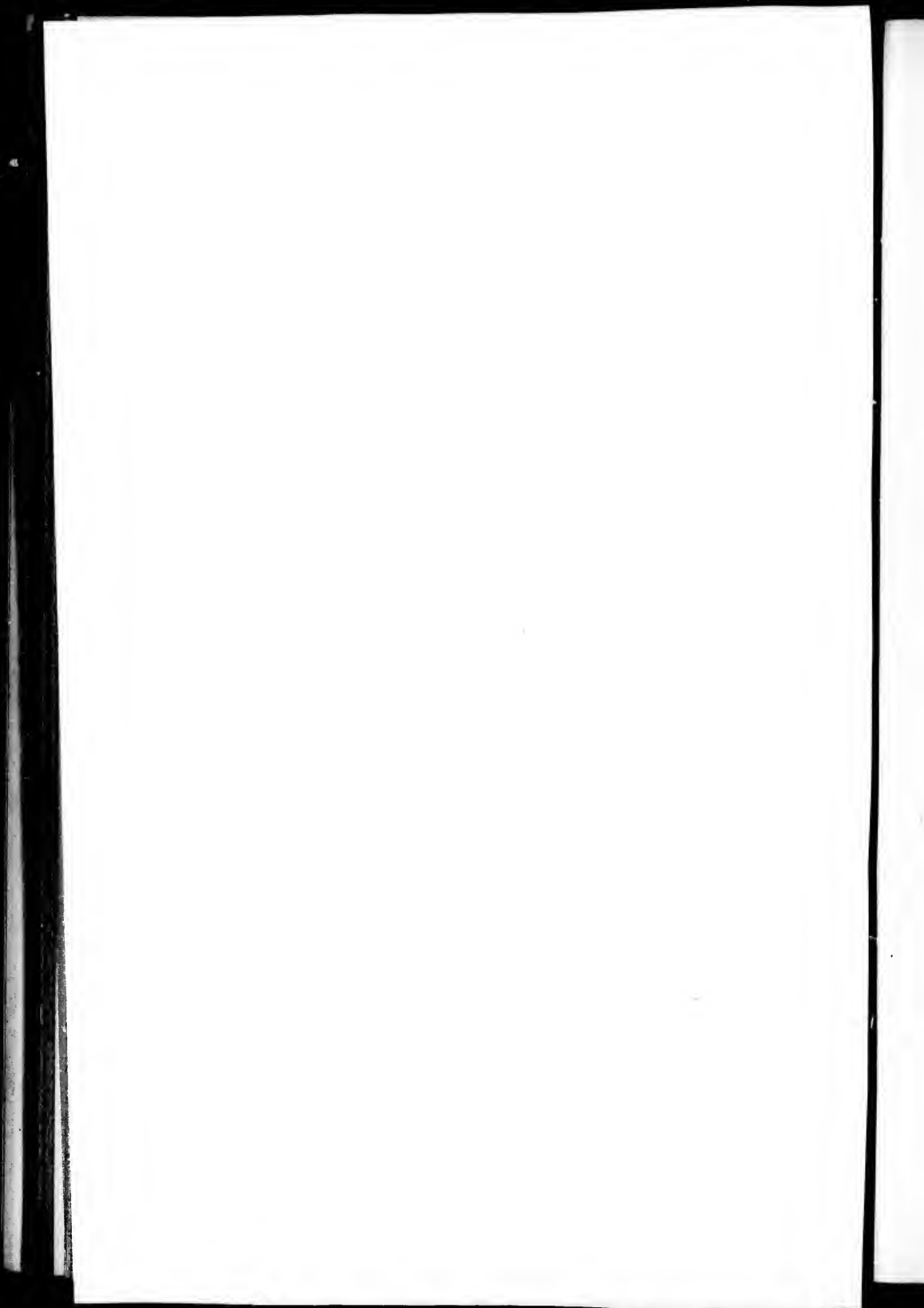
AND

C. B. KEENAN, M.D.,

Resident Surgeon, Royal Victoria Hospital.

(Reprinted from the Montreal Medical Journal, December, 1897.)





15

A CASE OF TYPHOIDAL CHOLECYSTITIS WITH CHOLELITHIASIS.¹

BY

C. F. MARTIN, B.A., M.D.,

Lecturer on Medicine, McGill University; Assistant Physician, Royal Victoria
Hospital,

AND

C. B. KEENAN, M.D.,

Resident Surgeon, Royal Victoria Hospital.

Cases of typhoidal infection of the gall-bladder are, on the whole, not so very uncommon, and during the present year not a little attention has been paid to them in the recent papers of Dr. Osler and Dr. Mason at the last annual meeting of the Association of American Physicians. So far as we are aware, however, no cases of the kind have been brought to the notice of this Society, and the present communication is presented, inasmuch as its clinical interest is certainly worthy of some attention. The following are the notable features:

1. A suppurative cholecystitis in the course of typhoid fever and originating from the presence of typhoid bacilli in pure culture in the gall-bladder.

3. The difficulties and special features of diagnosis of an infected gall-bladder complicating typhoid fever.

3. The mode in which the complication affects the course of the malady.

4. The means of treatment and the effects of the complication.

The patient concerned was a female, aged 35, a typewriter by occupation. She was admitted to the Royal Victoria Hospital on the 21st of September, having been treated previously for nearly three weeks by Dr. Deeks. Her symptoms during that time had been not unlike those of enteric fever, viz., general malaise, insomnia, remittent fever, enlarged spleen and gastro-intestinal disturbances.

On the day previous to admission, however, diarrhœa set in with clay-coloured stools. There was severe pain in the abdomen, referred to the right side near the umbilicus, the temperature within a very few hours dropped from 102° to 98°, and the pinched facies expressed great anxiety. The pulse, however, was good and not notably increased in rapidity.

¹ The present case occurred while the Retrospect on similar conditions which appears in this number was being written.

Professor Stewart, who saw the case in consultation, advised her removal to the hospital, and described the condition then somewhat as follows :

The temperature was $98\frac{1}{2}^{\circ}$, pulse 90, and the respirations 24 per minute. She was poorly nourished, evidently suffered intermittent pain, had a grayish coated tongue, anorexia, and the diarrhoea above described. There was no jaundice. Examination of the abdomen revealed slight redness over the right hypochondrium and a scarcely perceptible œdema. Pressure on the ribs induced tenderness, but no friction rub could be felt on palpation. Immediately below the ribs, a large mass was detected continuous with the liver and extending down as far as 2 to 3 cm. below the umbilicus, situated towards the median line and its right border slightly external to the right rectus muscle. Percussion over this area produced a modified dullness with some slight tympany. From above downwards the hepatic dullness began at the 6th rib. Pressure behind gave slight tenderness in the right line, but elsewhere there was no evidence of disease. The urine showed a trace of albumen, but no bile. The blood on examination for the Pfeiffer test, both at the laboratory of the Royal Victoria Hospital and at the General Hospital gave a positive reaction for typhoid. For the next three days the condition remained comparatively unaltered, except slightly increased rigidity and distension : surgical interference being deemed advisable. Doctors Garrow, Bell and Roddick were consulted, and the questions of diagnosis and treatment considered. While it was comparatively easy to exclude impaction of fœces, affections of the kidney and perforation from typhoid, the question of subcutaneous phlegmon, appendicitis and infection of the bile passages gave rise to considerable hesitation in the diagnosis. That cellulitis was present seemed more than likely from the marked œdema which had gradually developed in the abdominal wall ; while, at the same time, some more deeply-seated condition was also judged to be present. The mass itself, apart from the presence of what seemed a tongue of liver tissue coming down in the right hypochondrium, could not be definitely defined, and no distinct fluctuation was apparent. The symptoms, with the clinical history, pointed rather to some infection of the gall bladder than to appendicitis. The ultimate diagnosis was that of cholecystitis and cholelithiasis and operation was urged.

An incision was made in the right semi-lunar line, and the distended gall-bladder exposed lying amid a quantity of lymph due to a local plastic peritonitis. Adhesions of the gall-bladder were observed on all sides, but as yet no perforation of the organ had taken place.

Upon tapping, turbid grayish-green fluid was removed, and subsequently the gall-bladder itself was incised, and 150 small faceted cholesterin calculi were removed. The margin of the artificial opening in the gall-bladder was next stitched to the peritoneum and the usual surgical toilet performed.

The patient, however, failed to recover well from the operation, and at the end of the second day succumbed to the disease. Only a partial autopsy was permitted, but sufficient to show the typical lesions of typhoid fever in the intestines and the subacute inflammation of the gall-bladder itself with the more or less subacute pericholecystitis.

Cultures were obtained at operation from the gall-bladder and micro-organisms obtained which responded to all the tests for the *B. typhosus*. The fluid itself when examined in the fresh state revealed actively motile bacilli which agglutinated and became stationary when brought into contact with the blood serum of a patient affected with typhoid fever. The bacilli when later cultivated gave the same reaction of Pfeiffer, thus establishing beyond a doubt the identity of the microbe present in the gall-bladder. In addition to our own investigations, Dr. J. G. Macdougall made entirely independent tests and likewise identified the bacteria as those of enteric fever in pure culture.

In orienting ourselves again as to the special features in the diagnosis, there are several which in a way were seemingly characteristic.

The sudden alteration in the course of the disease, with development of a subnormal temperature, and sudden pain in the abdomen might have suggested perforation of the intestine, but the pulse remaining quiet and strong this was practically excluded. The symptoms, too, were intermittent, with periods of comparative freedom from pain and anxiety, which too has been a feature prominent in many similar cases of typhoidal cholecystitis. Add to this the tongue of liver pulled down by the gall-bladder, as first shown by Riedl, and we have a series of suggestive symptoms for the diagnosis. Jaundice was, of course, not to be expected as the bile passages elsewhere remained free.

The question of operation, while always a grave matter in cases of typhoid fever, was here a positive necessity, and from the thinned condition of the gall-bladder wall had undoubtedly anticipated an impending perforation. While the case recorded by Mason of successful tapping of the gall-bladder in a somewhat similar instance is of remarkable interest, yet the presence of calculi in our own case necessitated a more radical means of treatment.

