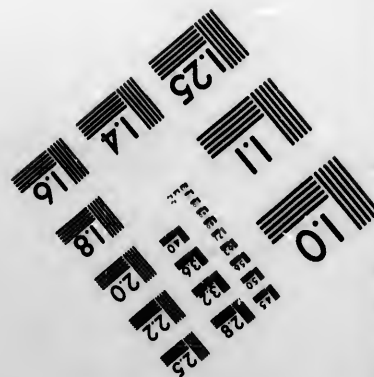
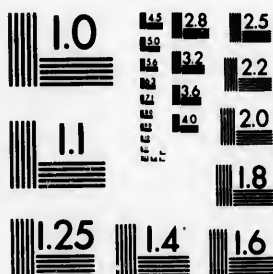


**IMAGE EVALUATION
TEST TARGET (MT-3)**



**CIHM/ICMH
Microfiche
Series.**

**CIHM/ICMH
Collection de
microfiches.**



Canadian Institute for Historical Microreproductions

Institut canadien de microreproductions historiques

1980

Technical Notes / Notes techniques

The Institute has attempted to obtain the best original copy available for filming. Physical features of this copy which may alter any of the images in the reproduction are checked below.

L'Institut a microfilmé le meilleur exemplaire qu'il lui a été possible de se procurer. Certains défauts susceptibles de nuire à la qualité de la reproduction sont notés ci-dessous.

Coloured covers/
Couvertures de couleur

Coloured pages/
Pages de couleur

Coloured maps/
Cartes géographiques en couleur

Coloured plates/
Planches en couleur

Pages discoloured, stained or foxed/
Pages décolorées, tachetées ou piquées

Show through/
Transparence

Tight binding (may cause shadows or distortion along interior margin)/
Reliure serré (peut causer de l'ombre ou de la distortion le long de la marge intérieure)

Pages damaged/
Pages endommagées

Additional comments/
Commentaires supplémentaires

Original copy restored and laminated.

Bibliographic Notes / Notes bibliographiques

Only edition available/
Seule édition disponible

Pagination incorrect/
Erreurs de pagination

Bound with other material/
Relié avec d'autres documents

Pages missing/
Des pages manquent

Cover title missing/
Le titre de couverture manque

Maps missing/
Des cartes géographiques manquent

Plates missing/
Des planches manquent

Additional comments/
Commentaires supplémentaires

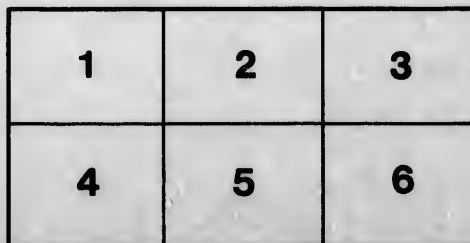
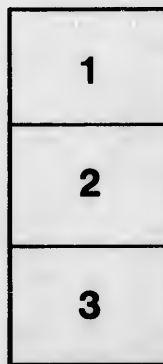
The images appearing here are the best quality possible considering the condition and legibility of the original copy and in keeping with the filming contract specifications.

The last recorded frame on each microfiche shall contain the symbol \rightarrow (meaning "CONTINUED"), or the symbol ∇ (meaning "END"), whichever applies.

The original copy was borrowed from, and filmed with, the kind consent of the following institution:

Library of the Public
Archives of Canada

Maps or plates too large to be entirely included in one exposure are filmed beginning in the upper left hand corner, left to right and top to bottom, as many frames as required. The following diagrams illustrate the method:



Les images suivantes ont été reproduites avec le plus grand soin, compte tenu de la condition et de la netteté de l'exemplaire filmé, et en conformité avec les conditions du contrat de filmage.

Un des symboles suivants apparaîtra sur la dernière image de chaque microfiche, selon le cas: le symbole \rightarrow signifie "A SUIVRE", le symbole ∇ signifie "FIN".

L'exemplaire filmé fut reproduit grâce à la générosité de l'établissement prêteur suivant :

La bibliothèque des Archives
publiques du Canada

Les cartes ou les planches trop grandes pour être reproduites en un seul cliché sont filmées à partir de l'angle supérieure gauche, de gauche à droite et de haut en bas, en prenant le nombre d'images nécessaire. Le diagramme suivant illustre la méthode :

Dr

ma
co

pr
pr
sh
84
re

Tr
on
be
su
to
po
la
th

sh
so
tic

tic
yo
sh
im
th

17
TORONTO, 21ST MARCH, 1882.

DEAR SIR.—

As one of your fellow Commuters and founders of the Temporalities' Fund, may I call your attention to its present state, as shown by the last report issued, a copy of which you have doubtless received.

In that report it is stated "that the revenues of the Board are not more at present than to meet the payments hitherto made to the Commuting Ministers, the privileged Ministers, and the annual grant to Queen's College,"—a statement which shows the serious nature of the deterioration of a Fund, originally sufficient to pay 84 Commuting and privileged Ministers, besides non-privileged Ministers, the present revenues apparently sufficing for payments to only about 37 beneficiaries.

I need scarcely point out to you that, contrary to the compact on which the Trust was founded, no less than 119 Ministers, Missionaries, and probationers were, on the 14th June, 1875, declared by the majority of the Synod to be entitled to the benefits of this Fund, equally with ourselves, no matter whether the revenue was sufficient or not to meet such payments; that Queen's College was declared entitled to \$2,000 a year, which could be capitalized at any time out of the Fund; and that power was taken to encroach on the capital of the Fund to meet the deficit. By the last report, you will find that the Fund now amounts to only \$332,192.98, instead of the original sum of \$508,000, and that that amount is rapidly lessening.

May I ask your serious attention to the report to which I have referred, which shows that not only has the Fund not been husbanded, but that it has been and is being so rapidly diminished as inevitably to lead to its speedy extinction, and the deprivation of the annuity originally guaranteed to you.

I have learned that out of the 28 surviving Commuters 12 have already petitioned Parliament praying that no encroachment on the Capital be permitted. If you have not also petitioned to that effect, is it not of vital importance that you should do so at once? There seems every reason to believe that if a strong and *immediate* remonstrance be not made by the Commuters by petition to Parliament the Fund will be completely destroyed.

I am,

Dear Sir,

Yours sincerely,

JOHN BARCLAY, D.D.

