

**CIHM
Microfiche
Series
(Monographs)**

**ICMH
Collection de
microfiches
(monographies)**



Canadian Institute for Historical Microreproductions / Institut canadien de microreproductions historiques

© 1997

Technical and Bibliographic Notes / Notes techniques et bibliographiques

The Institute has attempted to obtain the best original copy available for filming. Features of this copy which may be bibliographically unique, which may alter any of the images in the reproduction, or which may significantly change the usual method of filming are checked below.

- Coloured covers / Couverture de couleur
- Covers damaged / Couverture endommagée
- Covers restored and/or laminated / Couverture restaurée et/ou pelliculée
- Cover title missing / Le titre de couverture manque
- Coloured maps / Cartes géographiques en couleur
- Coloured ink (i.e. other than blue or black) / Encre de couleur (i.e. autre que bleue ou noire)
- Coloured plates and/or illustrations / Planches et/ou illustrations en couleur
- Bound with other material / Relié avec d'autres documents
- Only edition available / Seule édition disponible
- Tight binding may cause shadows or distortion along interior margin / La reliure serrée peut causer de l'ombre ou de la distorsion le long de la marge intérieure.
- Blank leaves added during restorations may appear within the text. Whenever possible, these have been omitted from filming / Il se peut que certaines pages blanches ajoutées lors d'une restauration apparaissent dans le texte, mais, lorsque cela était possible, ces pages n'ont pas été filmées.
- Additional comments / Commentaires supplémentaires:

L'Institut a microfilmé le meilleur exemplaire qu'il lui a été possible de se procurer. Les détails de cet exemplaire qui sont peut-être uniques du point de vue bibliographique, qui peuvent modifier une image reproduite, ou qui peuvent exiger une modification dans la méthode normale de filmage sont indiqués ci-dessous.

- Coloured pages / Pages de couleur
- Pages damaged / Pages endommagées
- Pages restored and/or laminated / Pages restaurées et/ou pelliculées
- Pages discoloured, stained or foxed / Pages décolorées, tachetées ou piquées
- Pages detached / Pages détachées
- Showthrough / Transparence
- Quality of print varies / Qualité inégale de l'impression
- Includes supplementary material / Comprend du matériel supplémentaire
- Pages wholly or partially obscured by errata slips, tissues, etc., have been refilmed to ensure the best possible image / Les pages totalement ou partiellement obscurcies par un feuillet d'errata, une pelure, etc., ont été filmées à nouveau de façon à obtenir la meilleure image possible.
- Opposing pages with varying colouration or discolourations are filmed twice to ensure the best possible image / Les pages s'opposant ayant des colorations variables ou des décolorations sont filmées deux fois afin d'obtenir la meilleure image possible.

This item is filmed at the reduction ratio checked below /
Ce document est filmé au taux de réduction indiqué ci-dessous.

	10x		14x		18x		22x		26x		30x	
					✓							
	12x		16x		20x		24x		28x		32x	

The copy filmed here has been reproduced thanks to the generosity of:

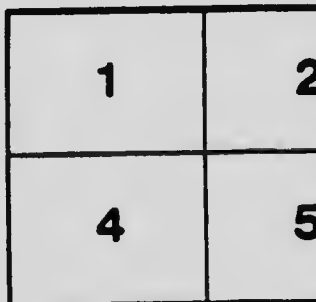
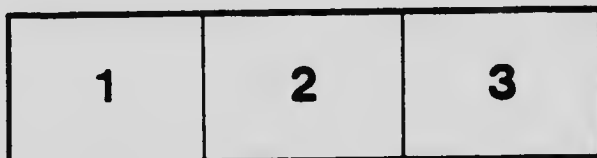
National Library of Canada

The images appearing here are the best quality possible considering the condition and legibility of the original copy and in keeping with the filming contract specifications.

Original copies in printed paper covers are filmed beginning with the front cover and ending on the last page with a printed or illustrated impression, or the back cover when appropriate. All other original copies are filmed beginning on the first page with a printed or illustrated impression, and ending on the last page with a printed or illustrated impression.

The last recorded frame on each microfiche shell contains the symbol \rightarrow (meaning "CONTINUED"), or the symbol ∇ (meaning "END"), whichever applies.

Maps, plates, charts, etc., may be filmed at different reduction ratios. Those too large to be entirely included in one exposure are filmed beginning in the upper left hand corner, left to right and top to bottom, as many frames as required. The following diagrams illustrate the method:



L'exemplaire filmé fut reproduit grâce à la générosité de:

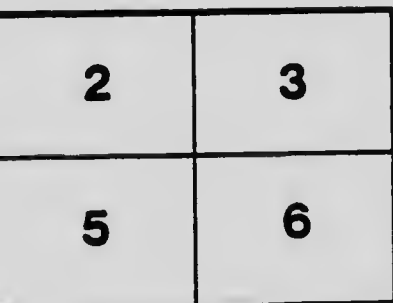
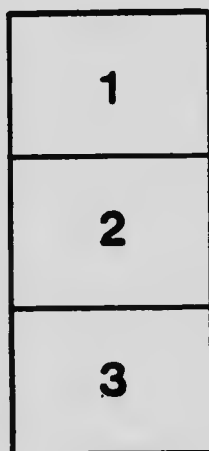
Bibliothèque nationale du Canada

Les images suivantes ont été reproduites avec le plus grand soin, compte tenu de la condition et de la netteté de l'exemplaire filmé, et en conformité avec les conditions du contrat de filmage.

Les exemplaires originaux dont la couverture en papier est imprimée sont filmés en commençant par la première page et en terminant soit par la dernière page qui comporte une empreinte d'impression ou d'illustration, soit par la seconde page, selon le cas. Tous les autres exemplaires originaux sont filmés en commençant par la première page qui comporte une empreinte d'impression ou d'illustration et en terminant par la dernière page qui comporte une telle empreinte.

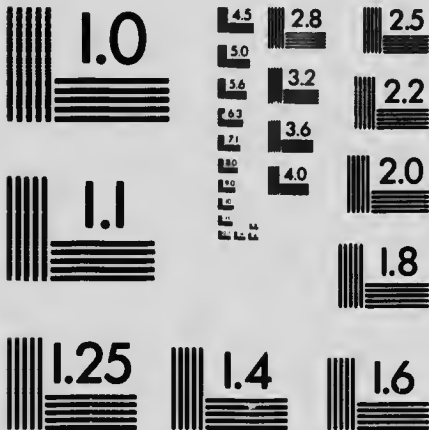
Un des symboles suivants apparaîtra sur la dernière image de chaque microfiche, selon le cas: le symbole \rightarrow signifie "A SUIVRE", le symbole ∇ signifie "FIN".

Les cartes, planches, tableaux, etc., peuvent être filmés à des taux de réduction différents. Lorsque le document est trop grand pour être reproduit en un seul cliché, il est filmé à partir de l'angle supérieur gauche, de gauche à droite, et de haut en bas, en prenant le nombre d'images nécessaire. Les diagrammes suivants illustrent la méthode.



MICROCOPY RESOLUTION TEST CHART

(ANSI and ISO TEST CHART No. 2)



APPLIED IMAGE Inc

1653 East Main Street
Rochester, New York 14609 USA
(716) 482 - 0300 - Phone
(716) 288 - 5989 - Fax



HOTEL
LAKE
ST. JOSEPH

H O T E L
L A K E
S T. J O S E P H



CANADIAN NORTHERN
RAILWAY SYSTEM
○○○○○○○○ QUEBEC ○○○○○○○○

THE HERALD PRESS
of MONTREAL



L O C A T I O N

THE loveliest sheet of water in Eastern Quebec is Lake St. Joseph. The Algonquin and Huron Indians who hunted all around it, called it "Ontaritzi," but the early French settlers, impressed by its restful charm, named it after their Patron Saint.

Write to the Manager, Hotel Lake St. Joseph, Que., for rates. (Prior to June 24, address care of C. N. Ry., Quebec City.)

FC 2945

L29145

H67

19002

P#7#



THE ROTUNDA

THE LAKE & ITS HOTEL

HERE the old world conspires with the new, and where both have employed magnificent Nature for their servant, to minister to every attribute of travel and of happiness—that is Quebec; superb, matchless, lovable Quebec.

Every time you come back to the dear, aged city, you love her the more. The grim nobility of the Citadel; the imperishable glory of the Plains; the majestic sweep of the waters that were gathered into Superior and Huron, and Erie and Ontario, and then into themselves from uncounted hills and unmeasured valleys; the swelling

vistas of rugged scenery north and south of the St. Lawrence; the accent which Champlain knew; the bright suavity of character, the blessed optimism, the rare grace of content that distinguish French Canada, and seem to make the Union Jack flutter more gaily in the breeze—these are some of the things which help to give the old city its abiding renown. You *must* come to Quebec, and coming, you must stay awhile and breathe an atmosphere that is like none other in this spacious world.

To appreciate Quebec you must be near enough at hand to get the right perspective, and far enough away to enjoy afresh the sensation that belongs to approach to an incomparable city by a strange path. There is an ideal method of utilizing the exchange of business for pleasure—it is by staying an hour's distance from Quebec city and so securing the perfect balance between careless rest and the somewhat strenuous historical exploration which residence in the city itself is sure to involve.

With fine understanding of the art and practice of holidaying the Lake St. Joseph hotel was built on the lake of that name, twenty-two miles from Quebec, and so close to the Quebec & Lake St. John Railway (C. N. Ry. System) that a station was placed in the hotel grounds. The



THE BALL ROOM

hotel was built in 1905 on the best plan that experience and architectural skill could devise; and if this writing fails to carry a peculiarly strong impression of the excellence of the location and the means adopted to take advantage of it, the fault is wholly in the writing. The subject is without blemish.

Imagine a lake with a shore line of twenty-one miles, amid hills, dressed in all the panoply of the richest, most variegated foliage that the abundant sunlight of mid-summer can produce. Throw into the waters that are replenished from the Riviere aux Pins, and through the perfect filter of the fragrant woods, a fascinating stock of bass, lake trout, speckled trout and whitefish.

Break the shore line into a thousand curves and frame them in overhanging trees and easy slopes of sand with here and there a rock that tells of the time when Mother Earth played ducks and drakes with her fortune and turned out something new.

Lift the waters five hundred feet above the level of the tides whose lapping you can almost hear in the distance. Waft over it, day and night, the balmiest air that finely complexioned women could wish to breathe. Furnish it with a place of luxurious repose. Supply it with a dozen adjuncts of youthful pleasure and mature ease—boats, rods, nets, courts, guns, links, drives, music that maketh the feet to dance; and indeed with the things men and women most desire; and you have summertime the ideal; you have Lake St. Joseph and its ministers of comfortable peace.

The hotel speaks for itself. It is as good as it looks—which is sometimes not true of hotels. Outside, it is exactly what the camera tells you. Inside, it is all that, and more. There is plenty of room, as becomes a summer residence purposely prepared. Oppressive July and August nights are unknown on this side the St. Lawrence. If they were, the Lake St. Joseph Hotel would make refreshment out of affliction. If you happen to be around



RIVIERE AUX PINS

when the season opens, or nears its cheerful, mellow close, you may discern a little bite in the evening air. For such a time there are big, open hearths and blazing logs. But, whatever the weather, there is something to meet changing needs. Orchestra and ball room are effective defences against the unkindest skies; and tennis on the dryest courts, is a royal game, except when rain descends.

There is a feature of Lake St. Joseph that experienced travellers appreciate. Around the lake are many summer homes of Quebec families, for whom the hotel has become a much-liked social headquarters. Quebec society reflects the charm of Quebec city—in truth it intensifies it. You cannot find a more delight-

ful commingling of freedom and restraint than there is on and around Lake St. Joseph. Boating and canoeing club regattas supply an animation that enriches the landscape, and gives to social intercourse an even more engaging aspect of vivacity and beauty. Quebec people come for the whole summer. Some of the visitors who have leisure, and some who are beset by the temptation to make leisure, decide, on two weeks' acquaintance with Lake St. Joseph, that they must stay the summer through.

And no wonder. With telegraph and telephone in the hotel, a railway station in the grounds, the best, in service, that money can buy and ingenuity improve; and the newness of life that comes to those who dwell much out of doors, people ask one another, not "When do you go," but "How long can you stay."

Finally, and crucially, there is the question of management, lack of which may make the best appointments, the rarest scenery, the widest range of attractions, the most exhilarating air, a mere collection of weariness.

The Quebec & Lake St. John Railway have selected a manager of international experience in the conduct of hotels, and guests will find that every provision has been made for their comfort.



THE DIN

THE VERY EXCELL

THE Quebec and Lake St. John Railway trains run to and from Quebec will be admirable, averaging and day visitors. The only Gas-Electric Moto

DIRECT SERVICE FROM NEW YO

LL roads lead to Quebec, but for travellers from New Y commercial metropolis of Canada before coming to Quebec Boston, Buffalo or Toronto in the evening and changing a



THE HOT

INTERESTING FEATURES

FIFTY MINUTES RIDE FROM QUEBEC • RAILWAY SERVICE • ON A LAKE SEVEN MILES LONG • IN T
UP-TO-DATE APPLIANCES, INCLUDING TELEPHONE •
ORCHESTRA AND PERFECT BALLROOM • COMFORT
REGATTAS • TWO LARGE MOTOR LAUNCHES •
FIRST-CLASS TENNIS COURTS • CROQUET LAWNS
RESIDENCES • MAGNIFICENT SCENERY • FREEDO



HOTEL

RES ABOUT THE HOTEL

RAILWAY STATION IN GROUNDS • EXCELLENT TRAIN
• IN THE MIDST OF THE LAURENTIAN MOUNTAINS
• SPACIOUS HALLS, CORRIDORS AND ROOMS
COMFORT • UNLIMITED BOATING AND FREQUENT
• SANDY BEACHES • ABUNDANT FISHING
• GOLF LINKS • CENTRE OF CHARMING
FREEDOM FROM HAY FEVER • MODERATE RATES



THE DINING

THE VERY EXCELLEN

THE Quebec and Lake St. John Railway trains run into and from Quebec will be admirable, averaging six and Sunday visitors. The only Gas-Electric Motor Ca

DIRECT SERVICE FROM NEW YORK

ALL roads lead to Quebec, but for travellers from New York, commercial metropolis of Canada before coming to Quebec, the Boston, Buffalo or Toronto in the evening and changing at Mo



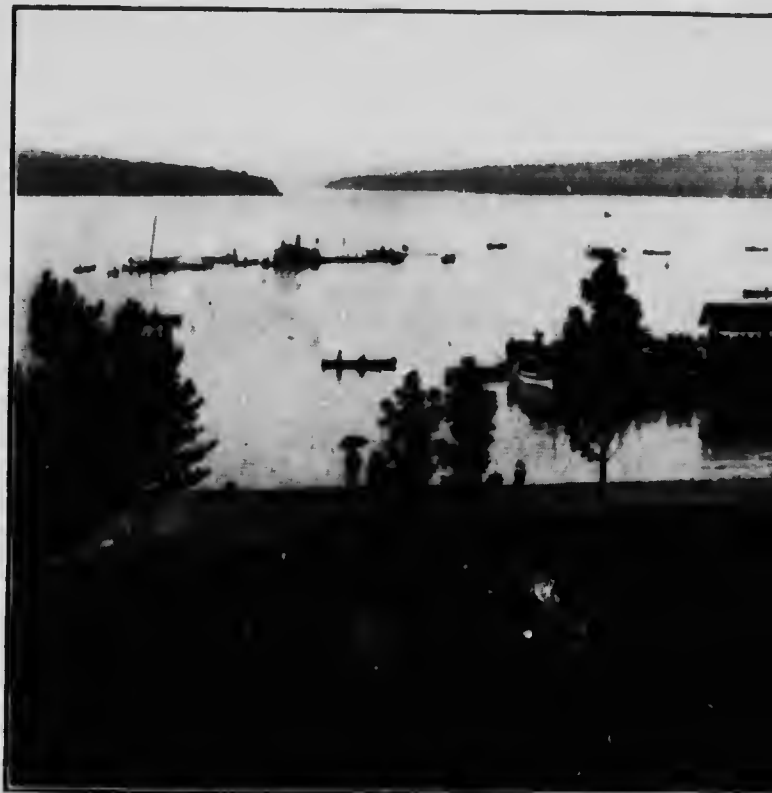
DINING-ROOM

LENT TRAIN SERVICE

run into the Hotel Station during the summer. The service
giving six trains daily each way, with specials for week end
Motor Car Service in Canada.

YORK AND BOSTON, VIA MONTREAL

w York, Boston, and cities west of Montreal, who wish to see the
Quebec, there is an uniquely picturesque route. Leaving New York,
ng at Montreal next morning, to the Canadian Northern Quebec



DURING ONE OF THE NUME

Railway, the trip can be made via Maskinongé Falls, Shawinig
shores of the historic St. Lawrence to Quebec, a "boat ride by
inhabitant villages on one hand, and the mighty St. Lawrence on the

By special arrangement beforehand, intending guests may ma
C. N. R. palatial ocean liners, Royal Edward or Royal George, a

The hotel can be made the headquarters for visits to the ancient
St. John and the matchless Saguenay.

Further Information may

R. L. FAIRBAIRN,
C. N. R. Bldg., Toronto

GUY TOM
226 St. James Street



NUMEROUS HOTEL REGATTAS

Shawinigan Falls, Grand Mère, and the new direct line along the
ride by rail." This new line is one continuous panorama of quaint
e on the other, and saves a transfer between stations in Quebec City.

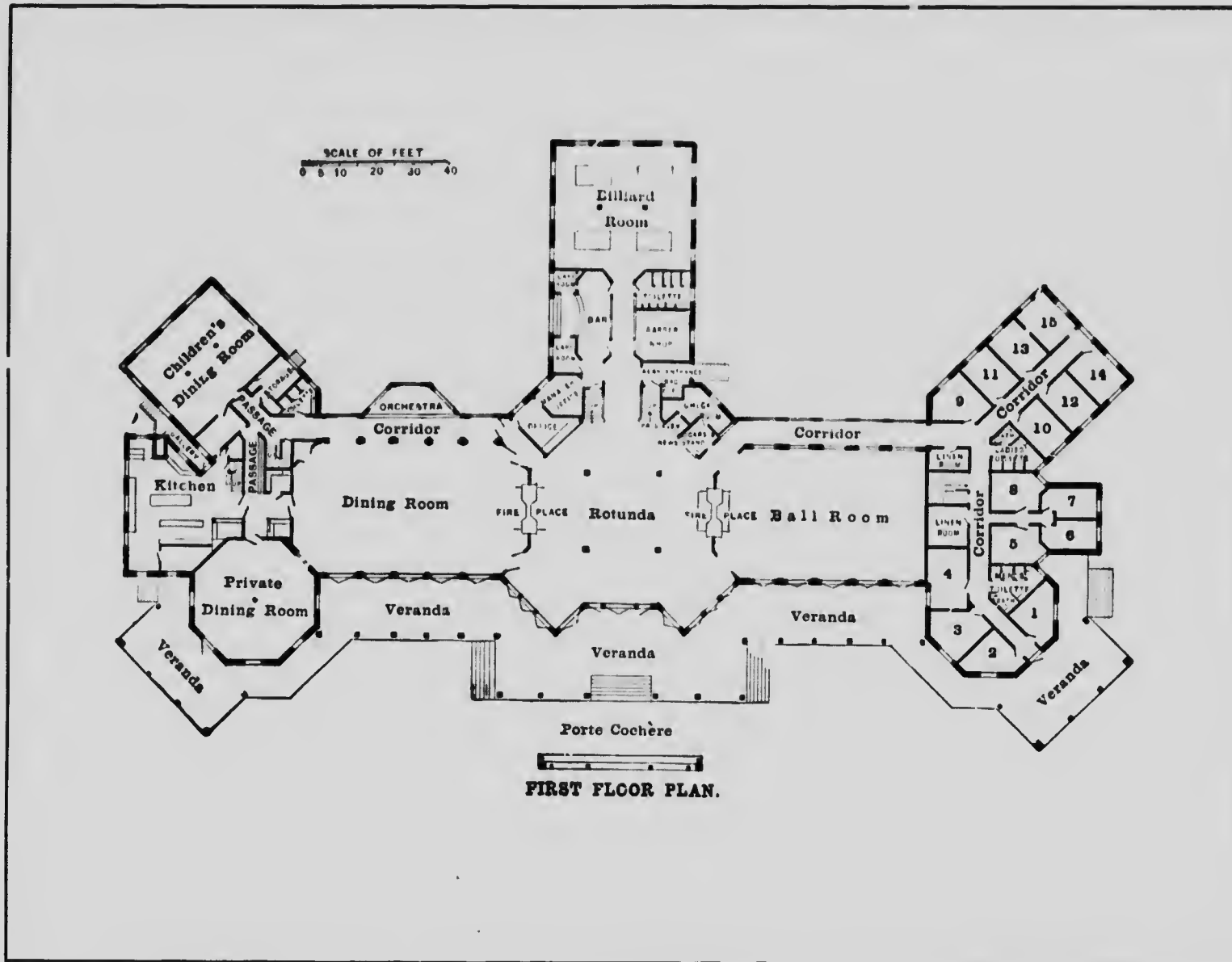
may make the trip between Montreal and Quebec on one of the
George, and see the mighty river by daylight.

e ancient city, and to the upper St. Maurice, Lake Edward, Lake

ation may be secured from

Y TOMBS,
ames Street, Montreal

W. W. JOHNSTON,
C. N. R. Depot, Quebec



FIRST FLOOR PLAN.

SOME INTERESTING SIDE TRIPS

HERE is a compelling charm about the immediate neighborhood of the Lake St. Joseph Hotel and the visitor may find something new to do or sense within walking or boating distance of the hotel at any time. There is an infinite variety of amusement and recreation pleasures to be had without leaving the hotel grounds. But added to this the visitor has the great advantage offered by the close proximity of many places of historic and romantic interest which provide objective points for many pleasant "outing" days.

A convenient train service is run from the hotel grounds to Quebec, Ste. Anne de Beaupre, Cap Tourmente, Montmorency Falls, Indian Lorette, Lake Edward, La Tuque, Lake St. John, etc., about which places full information will be gladly furnished by the manager.

SOME OF THE ATTRACTIONS

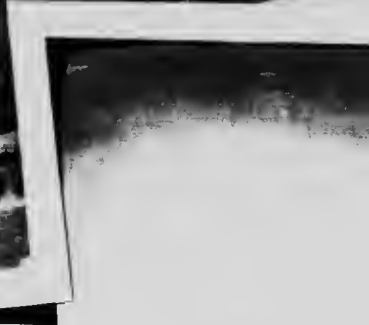
MONT-
MORENCY
FALLS



GRAND
CHIEF
OF THE
HURONS



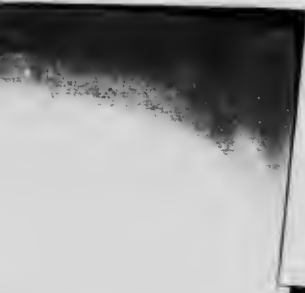
SIL. ANNE DE BEA



CTIONS WITHIN EASY REACH



BATISCAN
RIVER



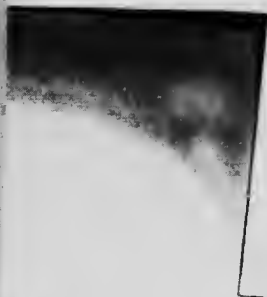
LORETTE
INDIAN
CHAPEL—
200 YEARS
OLD

NE DE BEAUPRE

ONS WITHIN EASY REACH



BATISCAN
RIVER



DE BEAUPRE



LORETTE
INDIAN
CHAPEL—
200 YEARS
OLD



Best in Six Provinces

THE Canadian Northern Quebec Railway is one of the lines of the Canadian Northern System, which traverse over 6,500 miles of the best country in the six provinces of Nova Scotia, Quebec, Ontario, Manitoba, Saskatchewan and Alberta, is now building through British Columbia, and operates Hotels, also the fast Trans-Atlantic Royal Line.

FOR fisherman and hunter there is nothing to beat the variety and abundance of sport that is available nearby Canadian Northern Railways from the Ocean Shore of Nova Scotia to the Rocky Mountains. The growth of the Canadian Northern System, from nothing in 1896 to over 6,500 in 1912, is the most characteristic feature of the development of modern Canada.

WHETHER your interest in Canada is recreative or commercial, or both, the Information Bureau of the Canadian Northern System Head Office, Toronto, will gladly deal with any inquiry you address to it.



