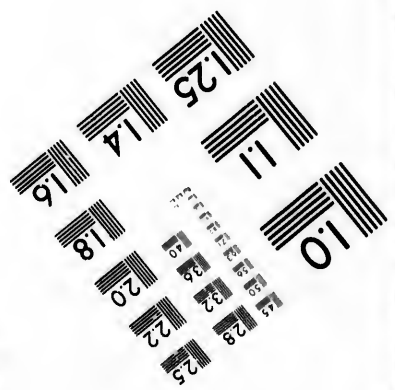
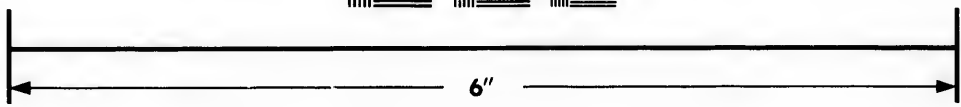
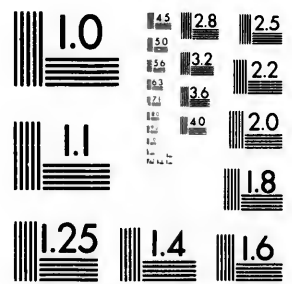


**IMAGE EVALUATION
TEST TARGET (MT-3)**



**Photographic
Sciences
Corporation**

23 WEST MAIN STREET
WEBSTER, N.Y. 14580
(716) 872-4503

15 28
32 25
22
20
8

**CIHM/ICMH
Microfiche
Series.**

**CIHM/ICMH
Collection de
microfiches.**



Canadian Institute for Historical Microreproductions / Institut canadien de microreproductions historiques

10

© 1981

Technical and Bibliographic Notes/Notes techniques et bibliographiques

The Institute has attempted to obtain the best original copy available for filming. Features of this copy which may be bibliographically unique, which may alter any of the images in the reproduction, or which may significantly change the usual method of filming, are checked below.

L'Institut a microfilmé le meilleur exemplaire qu'il lui a été possible de se procurer. Les détails de cet exemplaire qui sont peut-être uniques du point de vue bibliographique, qui peuvent modifier une image reproduite, ou qui peuvent exiger une modification dans la méthode normale de filmage sont indiqués ci-dessous.

- Coloured covers/
Couverture de couleur
- Covers damaged/
Couverture endommagée
- Covers restored and/or laminated/
Couverture restaurée et/ou pelliculée
- Cover title missing/
Le titre de couverture manque
- Coloured maps/
Cartes géographiques en couleur
- Coloured ink (i.e. other than blue or black)/
Encre de couleur (i.e. autre que bleue ou noire)
- Coloured plates and/or illustrations/
Planches et/ou illustrations en couleur
- Bound with other material/
Relié avec d'autres documents
- Tight binding may cause shadows or distortion
along interior margin/
La reliure serrée peut causer de l'ombre ou de la
distortion le long de la marge intérieure
- Blank leaves added during restoration may
appear within the text. Whenever possible, these
have been omitted from filming/
Il se peut que certaines pages blanches ajoutées
lors d'une restauration apparaissent dans le texte,
mais, lorsque cela était possible, ces pages n'ont
pas été filmées.
- Additional comments:/
Commentaires supplémentaires:

- Coloured pages/
Pages de couleur
- Pages damaged/
Pages endommagées
- Pages restored and/or laminated/
Pages restaurées et/ou pelliculées
- Pages discoloured, stained or foxed/
Pages décolorées, tachetées ou piquées
- Pages detached/
Pages détachées
- Showthrough/
Transparence
- Quality of print varies/
Qualité inégale de l'impression
- Includes supplementary material/
Comprend du matériel supplémentaire
- Only edition available/
Seule édition disponible
- Pages wholly or partially obscured by errata
slips, tissues, etc., have been refilmed to
ensure the best possible image/
Les pages totalement ou partiellement
obscurcies par un feuillet d'errata, une pelure,
etc., ont été filmées à nouveau de façon à
obtenir la meilleure image possible.

This item is filmed at the reduction ratio checked below/
Ce document est filmé au taux de réduction indiqué ci-dessous.

10X	14X	18X	22X	26X	30X
<input type="checkbox"/>	<input type="checkbox"/>	<input type="checkbox"/>	<input checked="" type="checkbox"/>	<input type="checkbox"/>	<input type="checkbox"/>
12X	16X	20X	24X	28X	32X

The copy filmed here has been reproduced thanks to the generosity of:

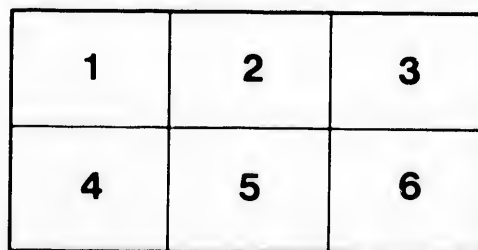
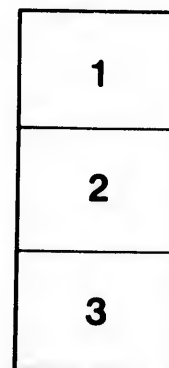
Library Division
Provincial Archives of British Columbia

The images appearing here are the best quality possible considering the condition and legibility of the original copy and in keeping with the filming contract specifications.

Original copies in printed paper covers are filmed beginning with the front cover and ending on the last page with a printed or illustrated impression, or the back cover when appropriate. All other original copies are filmed beginning on the first page with a printed or illustrated impression, and ending on the last page with a printed or illustrated impression.

The last recorded frame on each microfiche shall contain the symbol \rightarrow (meaning "CONTINUED"), or the symbol ∇ (meaning "END"), whichever applies.

Maps, plates, charts, etc., may be filmed at different reduction ratios. Those too large to be entirely included in one exposure are filmed beginning in the upper left hand corner, left to right and top to bottom, as many frames as required. The following diagrams illustrate the method:



L'exemplaire filmé fut reproduit grâce à la générosité de:

Library Division
Provincial Archives of British Columbia

Les images suivantes ont été reproduites avec le plus grand soin, compte tenu de la condition et de la netteté de l'exemplaire filmé, et en conformité avec les conditions du contrat de filmage.

Les exemplaires originaux dont la couverture en papier est imprimée sont filmés en commençant par le premier plat et en terminant soit par la dernière page qui comporte une empreinte d'impression ou d'illustration, soit par le second plat, selon le cas. Tous les autres exemplaires originaux sont filmés en commençant par la première page qui comporte une empreinte d'impression ou d'illustration et en terminant par la dernière page qui comporte une telle empreinte.

Un des symboles suivants apparaîtra sur la dernière image de chaque microfiche, selon le cas: le symbole \rightarrow signifie "A SUIVRE", le symbole ∇ signifie "FIN".

Les cartes, planches, tableaux, etc., peuvent être filmés à des taux de réduction différents. Lorsque le document est trop grand pour être reproduit en un seul cliché, il est filmé à partir de l'angle supérieur gauche, de gauche à droite, et de haut en bas, en prenant le nombre d'images nécessaire. Les diagrammes suivants illustrent la méthode.

ails
du
odifier
une
mage

trata
o

elure,
à

Nwp
971.61
P469c

PROVINCIAL



Royal Jubilee Hospital, CADBORO BAY ROAD.

The Corner Stone
will be laid by
Mrs. Nelson
wife of the Honorable Hugh Nelson,
Lieut-Governor of British Columbia,
on Easter Monday 22nd April 1889.
at 2.30 P. M.

The Committee request the pleasure of
..... *attendance*

Victoria, B.C.
April 15th 1889.

William M. Audley.
Honorary Secretary.

IT IS ABSOLUTELY NECESSARY that VISITORS be in THEIR SEATS PUNCTUALLY AT 2:15 P. M.

PROGRAMME.

—:O:—

RECEPTION OF LIEUT.-GOVERNOR AND MRS. NELSON.

PERFORMANCE BY H. M. S. "SWIFTSURE" BAND.

SINGING BY 500 CHILDREN,

From the Public Schools, under the joint direction of PROFESSOR SHARPE and MR. R. OFFERHAUS.

"THE HEAVENS ARE TELLING."—*Hayden.*

The spacious firmament on high,
With all the blue ethereal sky,
And spangled heavens, a shining frame,
Their great Original proclaim.

The unweared sun, from day to day,
Docs his Creator's power display,
And publishes to every land
The work of an Almighty hand.

Soon as the evening shades prevail,
The moon takes up the wondrous tale:
And nightly to the listening earth
Repeats the story of her birth;

While all the stars that round her burn,
And all the planets in their turn,
Confirm the tidings as they roll,
And spread the truth from pole to pole.

What though in solemn silence all
Move round the dark terrestrial ball?
What though no real voice, nor sound,
Amidst their radiant orbs be found?

In reason's ear they all rejoice,
And utter forth a glorious voice;
For ever singing, as they shine,
"The hand that made us is divine."

PROGRAMME---Continued.

Address by the President, - - - THOS. R. SMITH, ESQ.

And Presentation of a Silver Trowel to - - MRS. NELSON

Depositing Case with Coins, Newspapers, Map of the City,
List of the Committee, &c.

LAYING OF THE CORNER STONE.

VEN. ARCHDEACON SCRIVEN, - - Prayer of Dedication

PERFORMANCE BY H. M. S. "SWIFTSURE" BAND.

HOSPITAL HYMN, - - - BY THE CHILDREN

"THINE ARM O' LORD."

Thine Arm O Lord in days of old,
Was strong to heal and save ;
It triumphed o'er disease and death,
O'er darkness and the grave ;
To Thee they went, the blind, the dumb,
The palsied and the lame,
The leper with his tainted life,
The sick with fevered frame.

And lo, Thy touch brought life and health,
Gave speech, and strength, and sight ;
And youth renewed and frenzy calmed
Owned Thee, the Lord of Light ;
And now, O Lord, be near to bless
Almighty as of yore,
In crowded street, by restless couch,
As by Gennesareth's shore.

Be Thou our great Deliverer still,
Thou Lord of life and death ;
Restore and quicken, soothe and bless,
With Thine almighty breath ;
To hands that work and eyes that see
Give wisdom's heavenly lore,
That whole and sick, and weak and strong,
May praise Thee evermore. Amen.

PROGRAMME---Continued.

GOD SAVE THE QUEEN—JUBILEE VERSION.

Solo by Mrs. Schwengers.

Chorus by Children and the Band of H. M. S. "Swiftsure."

"NATIONAL ANTHEM."

God save our gracious Queen,
Long live our noble Queen,
God save the Queen:
Send Her victorious,
Happy and glorious,
Long to reign over us:
God save the Queen.

Through all these fifty years;
Through all her joys and tears;
Through peace and war;
Thou hast upheld her throne,
While round it love has grown,
Binding vast realms in one
All the world o'er.

Thy choicest gifts in store
On her be pleased to pour;
Long may she reign:
May she defend our laws
And ever give us cause
To sing with heart and voice,
God save the Queen.



THE CHORAL SOCIETY will perform the Cantata, "THE ANCIENT MARINER," at the Victoria Theatre THIS EVENING at 8 o'clock, in aid of the Funds of the present Royal Hospital.

Tickets at Lombard & Co., Government Street.

