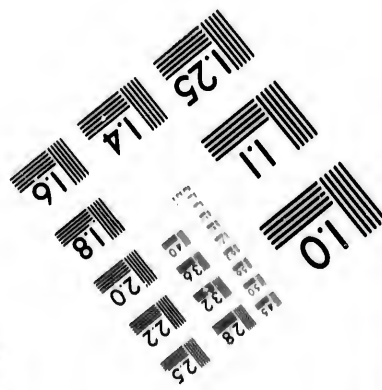
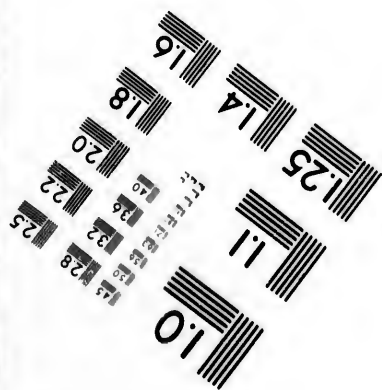
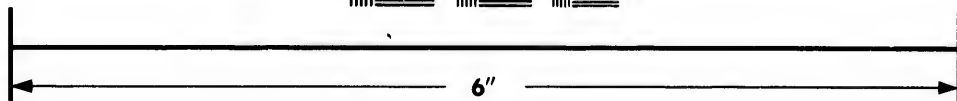
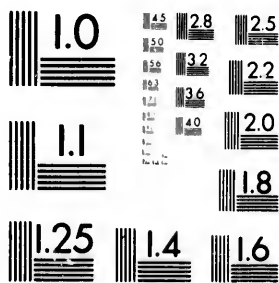


**IMAGE EVALUATION  
TEST TARGET (MT-3)**



**Photographic  
Sciences  
Corporation**

23 WEST MAIN STREET  
WEBSTER, N.Y. 14580  
(716) 872-4503

24  
28  
32  
25  
22  
20  
18

**CIHM/ICMH  
Microfiche  
Series.**

**CIHM/ICMH  
Collection de  
microfiches.**



Canadian Institute for Historical Microreproductions / Institut canadien de microreproductions historiques

10

**© 1981**

Technical and Bibliographic Notes/Notes techniques et bibliographiques

The Institute has attempted to obtain the best original copy available for filming. Features of this copy which may be bibliographically unique, which may alter any of the images in the reproduction, or which may significantly change the usual method of filming, are checked below.

L'Institut a microfilmé le meilleur exemplaire qu'il lui a été possible de se procurer. Les détails de cet exemplaire qui sont peut-être uniques du point de vue bibliographique, qui peuvent modifier une image reproduite, ou qui peuvent exiger une modification dans la méthode normale de filmage sont indiqués ci-dessous.

- Coloured covers/  
Couverture de couleur
- Covers damaged/  
Couverture endommagée
- Covers restored and/or laminated/  
Couverture restaurée et/ou pelliculée
- Cover title missing/  
Le titre de couverture manque
- Coloured maps/  
Cartes géographiques en couleur
- Coloured ink (i.e. other than blue or black)/  
Encre de couleur (i.e. autre que bleue ou noire)
- Coloured plates and/or illustrations/  
Planches et/ou illustrations en couleur
- Bound with other material/  
Relié avec d'autres documents
- Tight binding may cause shadows or distortion along interior margin/  
La reliure serrée peut causer de l'ombre ou de la distortion le long de la marge intérieure
- Blank leaves added during restoration may appear within the text. Whenever possible, these have been omitted from filming/  
Il se peut que certaines pages blanches ajoutées lors d'une restauration apparaissent dans le texte, mais, lorsque cela était possible, ces pages n'ont pas été filmées.
- Additional comments:/  
Commentaires supplémentaires:

- Coloured pages/  
Pages de couleur
- Pages damaged/  
Pages endommagées
- Pages restored and/or laminated/  
Pages restaurées et/ou pelliculées
- Pages discoloured, stained or foxed/  
Pages décolorées, tachetées ou piquées
- Pages detached/  
Pages détachées
- Showthrough/  
Transparence
- Quality of print varies/  
Qualité inégale de l'impression
- Includes supplementary material/  
Comprend du matériel supplémentaire
- Only edition available/  
Seule édition disponible
- Pages wholly or partially obscured by errata slips, tissues, etc., have been refilmed to ensure the best possible image/  
Les pages totalement ou partiellement obscurcies par un feuillet d'errata, une pelure, etc., ont été filmées à nouveau de façon à obtenir la meilleure image possible.

This item is filmed at the reduction ratio checked below/  
Ce document est filmé au taux de réduction indiqué ci-dessous.

10X	14X	18X	22X	26X	30X
<input type="checkbox"/>	<input type="checkbox"/>	<input checked="" type="checkbox"/>	<input type="checkbox"/>	<input type="checkbox"/>	<input type="checkbox"/>
12X	16X	20X	24X	28X	32X

The copy filmed here has been reproduced thanks to the generosity of:

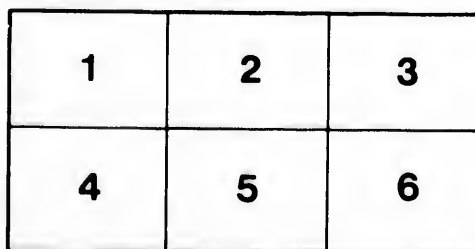
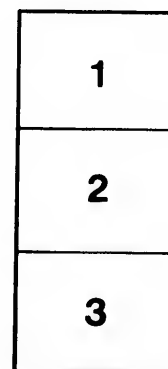
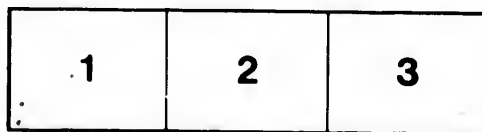
Library Division  
Provincial Archives of British Columbia

The images appearing here are the best quality possible considering the condition and legibility of the original copy and in keeping with the filming contract specifications.

Original copies in printed paper covers are filmed beginning with the front cover and ending on the last page with a printed or illustrated impression, or the back cover when appropriate. All other original copies are filmed beginning on the first page with a printed or illustrated impression, and ending on the last page with a printed or illustrated impression.

The last recorded frame on each microfiche shell contain the symbol → (meaning "CONTINUED"), or the symbol ▼ (meaning "END"), whichever applies.

Maps, plates, charts, etc., may be filmed at different reduction ratios. Those too large to be entirely included in one exposure are filmed beginning in the upper left hand corner, left to right and top to bottom, as many frames as required. The following diagrams illustrate the method:



L'exemplaire filmé fut reproduit grâce à la générosité de:

Library Division  
Provincial Archives of British Columbia

Les images suivantes ont été reproduites avec le plus grand soin, compte tenu de la condition et de la netteté de l'exemplaire filmé, et en conformité avec les conditions du contrat de filmage.

Les exemplaires originaux dont la couverture en papier est imprimée sont filmés en commençant par le premier plat et en terminant soit par la dernière page qui comporte une empreinte d'impression ou d'illustration, soit par le second plat, selon le cas. Tous les autres exemplaires originaux sont filmés en commençant par la première page qui comporte une empreinte d'impression ou d'illustration et en terminant par la dernière page qui comporte une telle empreinte.

Un des symboles suivants apparaîtra sur la dernière image de chaque microfiche, selon le cas: le symbole → signifie "A SUIVRE", le symbole ▼ signifie "FIN".

Les cartes, planches, tableaux, etc., peuvent être filmés à des taux de réduction différents. Lorsque le document est trop grand pour être reproduit en un seul cliché, il est filmé à partir de l'angle supérieur gauche, de gauche à droite, et de haut en bas, en prenant le nombre d'images nécessaire. Les diagrammes suivants illustrent la méthode.

tails  
du  
odifier  
une  
mage

trata  
o

elure,  
à

NWp  
971.95  
T951a

**Comer Beeton & Co's**

**ALMANACK**  
AND

• **PRICE LIST** •

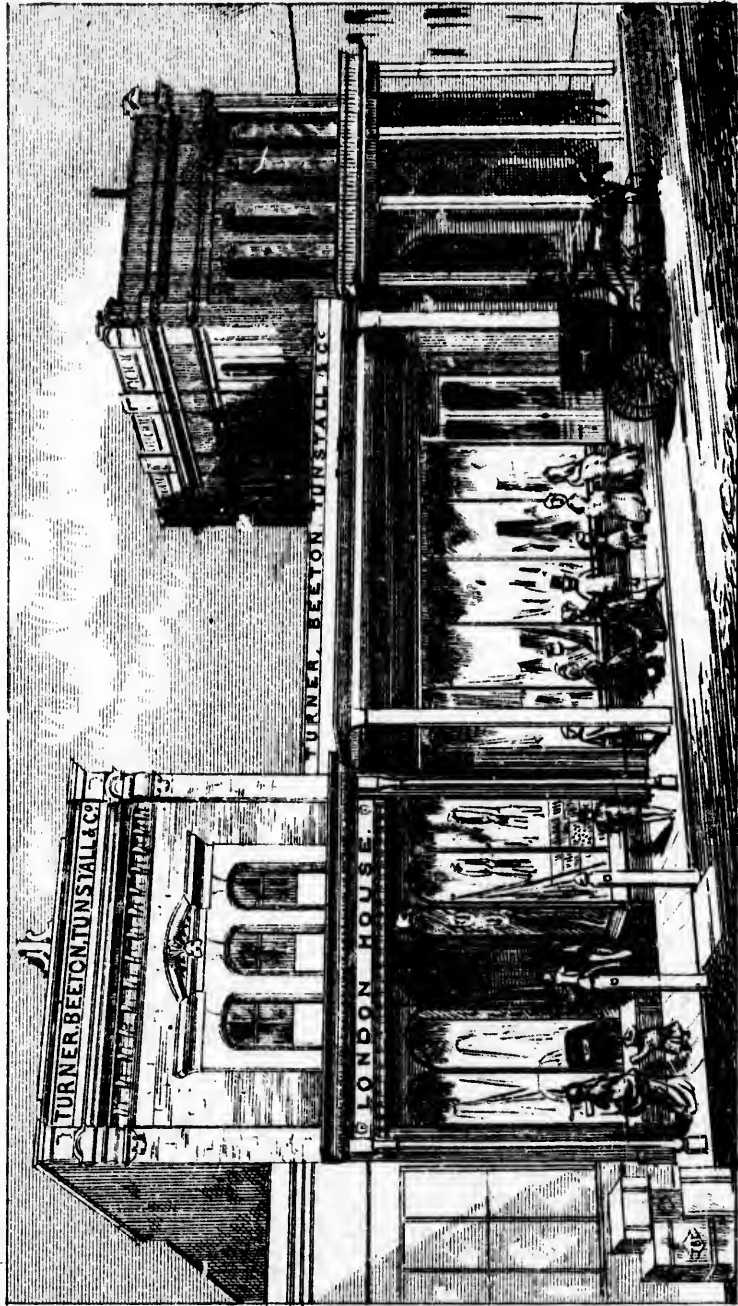
**1874**

• Wholesale •  
**WHARF STREET**

RETAIL  
**LONDON HOUSE**

GOVERNMENT ST.  
**VICTORIA B.C**

**J.P. TUNSTALL & Co** BOW CHURCH Y<sup>o</sup> LONDON E.C.



LONDON HOUSE. GOVERNMENT STREET. VICTORIA. B.C.



London House.

TURNER, BEETON

AND

TUNSTALL,

WHARF ST. AND GOVERNMENT ST.,

VICTORIA, B.C.

Almanack and List

FOR

1874.

IMPORTERS

OF ALL DESCRIPTIONS OF

DRY GOODS.

J. P. TUNSTALL & Co.,

8, BOW CHURCH YARD, LONDON, E.C.

LONDON:  
PRINTED BY RIDDLE AND COUCHMAN,  
10, WATLING STREET, CITY, E.C.





A decorative border with intricate floral and scrollwork patterns surrounds the text. The border is composed of repeating motifs of leaves, flowers, and scrolls, creating a classic, ornate frame.

## TURNER, BEETON & TUNSTALL,

HAVE again the pleasure, with the advent of the new year, 1874, of handing their Almanack to their Friends.

The interesting feature of the Moon's Changes and the Sun's Risings and Settings, for the Colony, specially calculated for their Calendar, is still continued.

The Retail Stock at London House is regularly supplied by Express with the latest Novelties from Paris and London.

Their Wholesale House in Wharf Street, under Mr. Rout Harvey's management, is also regularly supplied by Steam and sailing Vessels with direct importations from the Market of Europe.

A good supply of Alexandre's Gloves always on hand. T. B. & T. are the Sole Agents in British Columbia for this Glove.

J. P. TUNSTALL & Co.,

S, BOW CHURCH YARD.

LONDON. E.C.

TURNER, BEETON

AND TUNSTALL,

WHARF ST., VICTORIA,

BRITISH COLUMBIA.

WHOLESALE

DRY GOODS

AND

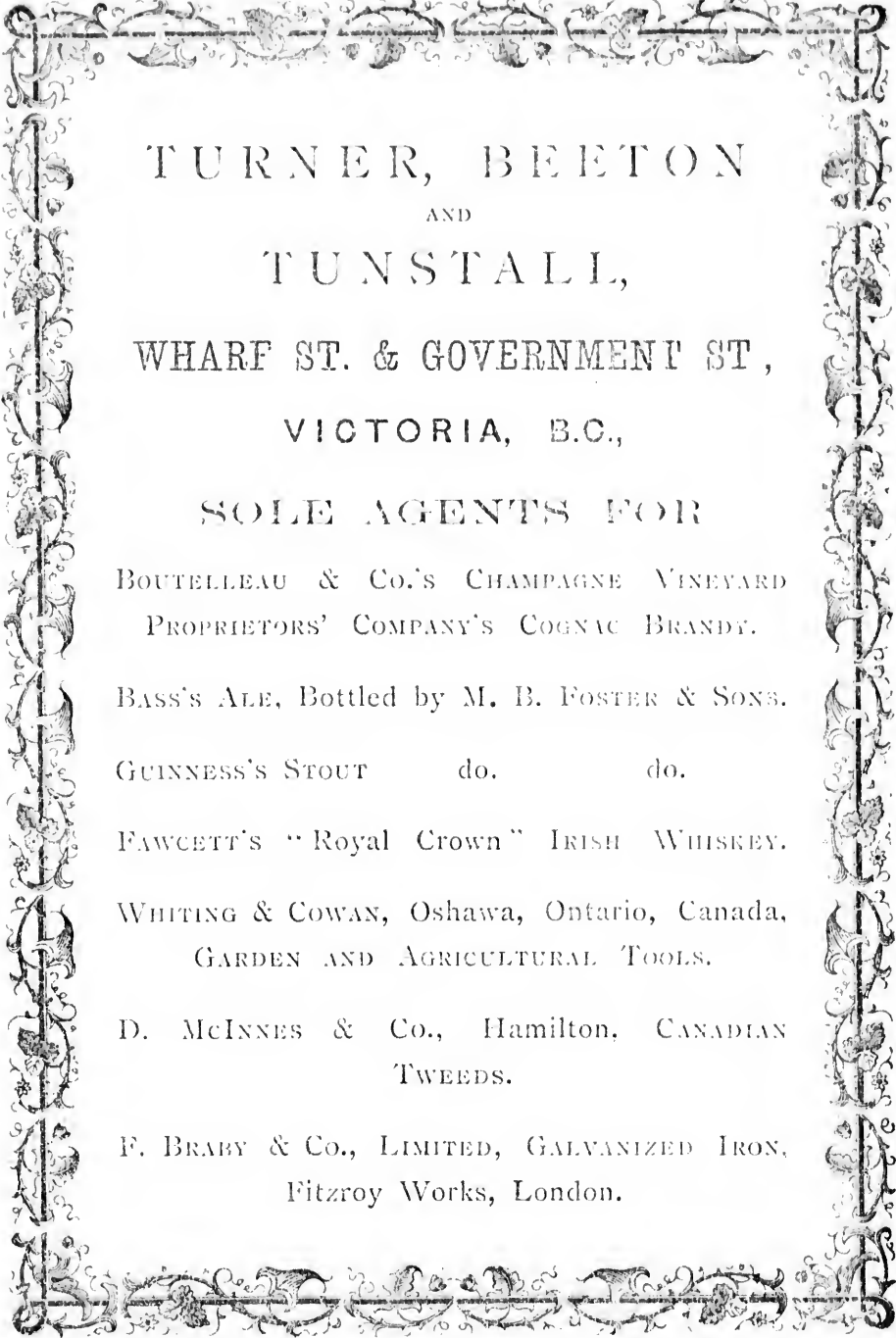
COMMISSION

MERCHANTS.

---

References in British Columbia and throughout  
the Dominion:—

BANK OF BRITISH NORTH AMERICA.



TURNER, BEETON  
AND  
TUNSTALL,  
WHARF ST. & GOVERNMENT ST,  
VICTORIA, B.C.,

SOLE AGENTS FOR

BOUTELLEAU & Co.'s CHAMPAGNE VINEYARD  
PROPRIETORS' COMPANY'S COGNAC BRANDY.

BASS'S ALE, Bottled by M. B. FOSTER & SONS.

GUINNESS'S STOUT      do.      do.

FAWCETT'S "Royal Crown" IRISH WHISKEY.

WHITING & COWAN, Oshawa, Ontario, Canada,  
GARDEN AND AGRICULTURAL TOOLS.

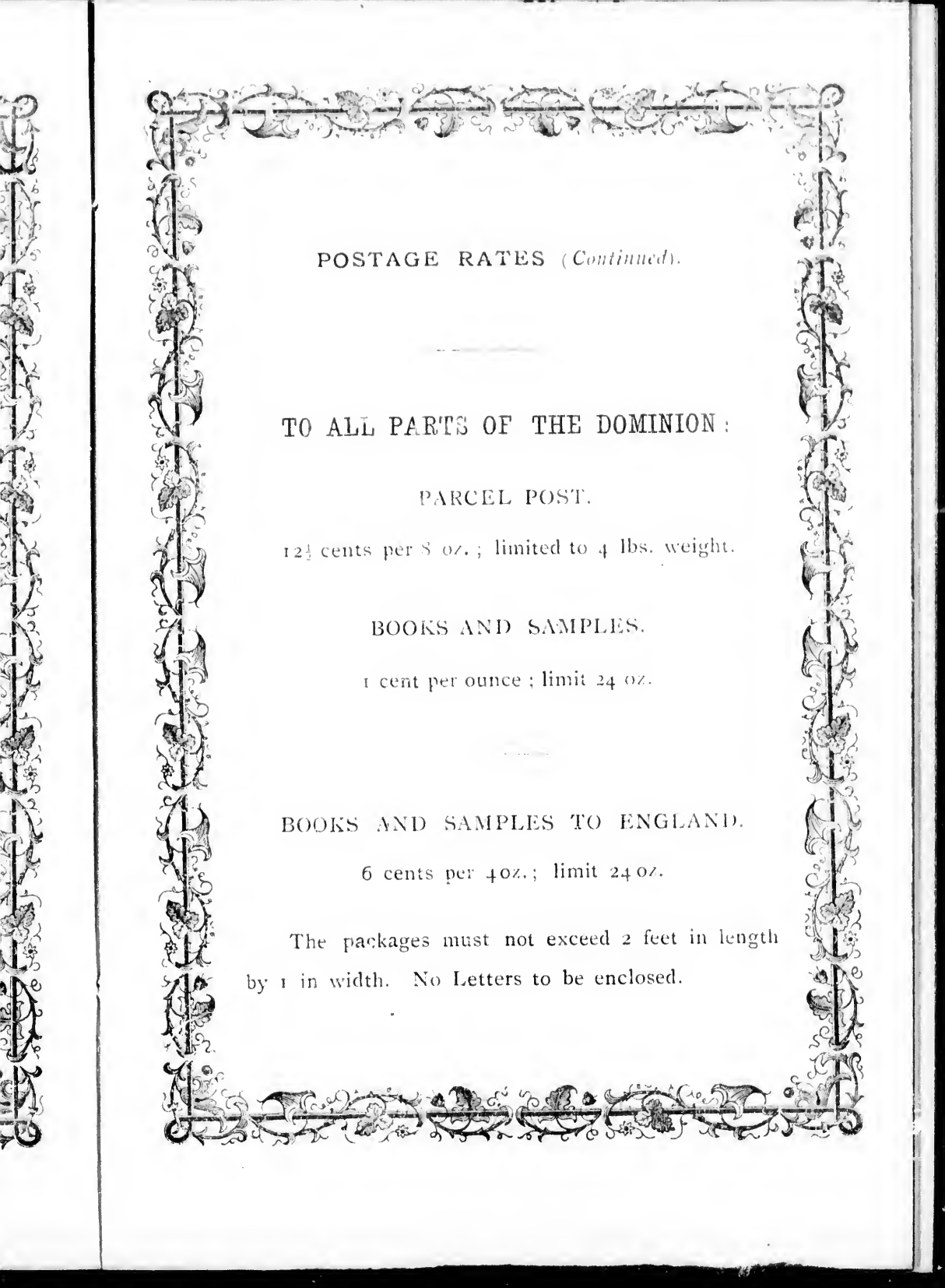
D. McINNES & Co., Hamilton, CANADIAN  
TWEEDS.

F. BRABY & Co., LIMITED, GALVANIZED IRON,  
Fitzroy Works, London.

# DOMINION OF CANADA.

## Postage Rates, 1874.

Registering Fee.	Letters $\frac{1}{2}$ oz.	Papers each.	Book Post.	
8 cents each	England	6 cts.	2 cts.	6 cts. per 4oz.
2 „ „	Canada	3 „	2 „	1 „ 1
16 „ „	Germany	10 „	8 „	8 „ 2
	Franc.	16 „	4 „	4 „ 2
50 cents	Australia	16 „	6 „	6 „ 4
per $\frac{1}{2}$ oz.	New Zealand			
	China			
16 cts. each	Italy	14 „	8 „	8 „ 2
16 „ „	Belgium	10 „	6 „	6 „ 2
64 „ „	(Switzerland)	10 „	8 „	8 „ 2
	via Belgium			
16 „ „	Austria	16 „	8 „	8 „ 2
16 „ „	Denmark	12 „	8 „	8 „ 2
16 cts.	Sierra Leone	16 „	4 „	10 „ 2
each	Brit. W. Indies	28 „	4 „	10 „ 2
	Bermuda	12 „	2 „	6 „ 4
	Baden	28 „	6 „	6 „ 2
16 cts.	Sweden and	16 „	8 „	8 „ 2
each	Norway			
5 cts. each	United States	6 „	2 „	1 „ 1

A decorative border with intricate floral and scrollwork patterns surrounds the text.

POSTAGE RATES (*Continued*).

TO ALL PARTS OF THE DOMINION :

PARCEL POST.

12½ cents per 8 oz. ; limited to 4 lbs. weight.

BOOKS AND SAMPLES.

1 cent per ounce ; limit 24 oz.

BOOKS AND SAMPLES TO ENGLAND.

6 cents per 4oz. ; limit 24 oz.

The packages must not exceed 2 feet in length  
by 1 in width. No Letters to be enclosed.

**SILKS.**

French Silks of all descriptions.  
Moiré Antiques.  
Satins.  
Black Gros Grains and Glacés, from 22 to 40 in.  
Irish Poplins.  
Silk Velvets, black and coloured.  
Black ditto, in extra widths.  
Mantle Velvet.  
Patent ditto, black and coloured.  
Foulard Silks.  
Velours d'Orleans.  
Gros Grain Silks in all the newest shades and  
colours of the season, with Trimmings in  
stock to match.

**S H A W L S .**

French Broché.  
Plaid and Fancy Wool.  
Black Lace, real and imitation.  
Plain Cashmere and Embroidered.  
Travelling Wraps and Rugs.  
Scarf Palliums.

*IMPORTERS OF DRY GOODS,*

## FURS.

*A good assortment of Choice Real and Imitation Furs in the newest shapes.*

Real Fur Sets—Muff, Cuffs, and Collar.  
The new Ermine, Sable, and Seal Ties, as now worn.  
Sealskin Paletots and Turbans.  
Astrachan ditto.  
Fur Trimmings.  
Foot Muffs.  
Elegant Carriage Wrappers.

## DRESS GOODS.

SILK AND WOOLLEN.

French Materials, as selling in Paris, for Costumes combining the Skirt and Polonoise.  
Merinoes, Repps, Serges, Linseys.  
De Laines, Alpacas, Cobourgs.  
Diagonal Cloths in the fashionable colours of the season, with Trimmings in stock to match.  
Camlets, French Prints, Brilliantes, Marsala, Cretannes.  
Muslins, Jaconets, and Organdies.  
Tartatans and Grenadines, and newest Ball Dresses.

*And all the New Fabrics as brought out.*

## WOOLLEN CLOTHS.

Broad Cloths, black and coloured.	Vestings. Italian Cloths.
Beavers.	Cashans.
Witneys.	Dandy Canvas.
Black Doeskins.	'Tailors' Trimmings.
Fancy Trouserings.	

WHOLESALE AND RETAIL.

**MILLINERY.**

The new Felt Hats and Bonnets.  
Millinery and Straw Bonnets and Hats.  
Ladies' Riding Hats.  
Boys' Hats and Caps.  
Fancy Combs.  
Chignons and Hair Plaits.  
French Flowers, Wreaths and Bouquets.  
Ostrich Feathers and Plumes.  
Bridal Veils, Wreaths and Bouquets.  
Opera Hoods and Fans.  
Bonnet and Sash Ribbons.  
Hat and Bonnet Shapes.

**LACES.**

Black and White Flouncings.  
Real and Imitation Laces and Edgings, black  
and white.  
Trimmed Handkerchiefs.  
Lace Jackets and Tunics.  
Lace Mantles and Shawls.  
Lace and Muslin Ball Dresses.  
Lace Sets, both in real and imitation.  
Fashionable Lace Ruffles.  
Real Brussels Lace Sets.  
CLUNY LACE, coloured and white.  
Danish Lace.  
Black Mohair Laces.  
Real Crotchet Edgings. Collars, D'Oyleys, &c.

*IMPORTERS OF DRY GOODS,*



## MANTLES.

The newest styles in Cloth, Velvet, Silk, and other fashionable materials, for Ladies and Children.

Velvet and Cloth Polonaises.

Ditto ditto Jackets, trimmed Fur.

Handsome Real Maltese Mantles.

Opera Cloaks.

Riding Jackets and Habits.

Walking Costumes, lately from Paris.

Waterproof Cloaks.

## UNDERCLOTHING.

LADIES & CHILDREN'S. IN LINEN & COTTON.

Corsets and Riding Belts.

Nursing and Patent Corsets.

Dressing Wrappers in all materials.

The New Steel Skirt, for Train and Walking Dresses.

Handsome Quilted Skirts, &c.

Dress Improvers, of newest styles.

A large stock of Cash's and other Frillings.

Toilet Jackets.

McLintock's Eider Dressing Gowns and Jackets.

---

WHOLESALE AND RETAIL.

**B A B Y   L I N E N .**

Handsome Cloaks.  
Quilted Silk and Satin Bonnets and Hats.  
Cashmere Silk and Satin Hoods.  
Embroidered Robes and Frocks.  
Nursing Aprons.  
Trimmed Baskets, furnished.  
Perambulator Covers.  
Bassinette ditto.

**H O S I E R Y .**

Balbriggan Hosiery.  
Men's, Women's, and Children's.  
Hose and Half Hose, for summer or winter.  
Fancy           ditto           ditto.  
Scotch Knit Half Hose.  
Fleecy Hosiery.  
Knit Goods.  
Nubias and Breakfast Shawls.  
Merino and Cotton Vests and Drawers.  
Pantaloons de Chasse.  
Crimean Shirts.  
Nagazaki Handkerchiefs.  
Gents' Ties and Scarfs.  
Cotton and Linen Shirts.  
Collars and Cuffs.

*IMPORTERS OF DRY GOODS.*

VICTORIA, B.C.

23

## TRIMMINGS.

Fringes in the new Colours.  
Ribbon Velvets ditto  
Steel and Fancy Buttons, Oxydized.  
Rouches in Silk and Satin Tulle.  
Cambric Frilling.  
Passementeries, and all the newest Paris styles  
of Trimmings.  
Brétonne Braid.

## FANCY GOODS.

Steel & Jet Earrings, Brooches, Bracelets, Clasps, &c.  
Oxidized, Silver, Vulcanite, Tortoiseshell, and  
Pearl ditto, just purchased in Paris.  
Fancy Wool Needlework.

A BEAUTIFUL STOCK JUST TO HAND OF  
French and other Fancy Boxes, Ornaments, &c..  
*Suitable for Christmas and New Year's Presents.*

LADIES AND GENTLEMEN'S TRAVELLING BAGS.

Umbrellas, Sunshades, and Parasols.

*Wedding Outfits & Mourning Orders*  
EXECUTED UPON THE SHORTEST NOTICE.

LADIES' WHITE KID AND SATIN BOOTS.

WHOLESALE AND RETAIL.

GLOVES.

Alexandre's Gentlemen's and Ladies'.  
Mousquetaire " "  
Also, Kid Gloves in other makes.  
Gauntlet Kid.  
Calf, Cloth, Silk, and Thread Gloves.  
Children's Gloves.  
Riding Gloves.  
Kidd Mitts.

CAMBRIC HANDKERCHIEFS.

SCOTCH AND MANCHESTER GOODS.

HORROCKSES LONG CLOTH.

CANTON FLANNELS,

COTTON TICKS,

WELSH AND OTHER FLANNELS,

DIRECT FROM THE MANUFACTURERS.

HABERDASHERY.

MACHINE COTTON, SILK & NEEDLES.

IMPORTERS OF DRY GOODS,

FURNISHING DEPARTMENT.

Handsome Brocaded Silk and Wool Damasks.

All Wool Rich Striped Peckinades.

„ Repps and Damasks.

Tamboured Net Curtains.

Lace and Muslin „

Longstitch Swiss „

Cornice Fringes.

Curtain Holders.

The latest styles in Furniture Trimmings.

Chintz Furnitures.

Velvet Pile Table Covers.

The new Tapestry Covers.

Cloth and Victoria Covers.

Blankets.

Fine Blankets, bound with Silk.

Bed Ticks.

Cotton and Linen Sheetings.

Counterpanes.

Eider Down Quilts.

Carpets.

Best Brussels and Tapestry.

Stair Carpets.

American Cloths.

WHOLESALE AND RETAIL.

16 TURNER, BEETON & TUNSTALL.



MASONIC GOODS.

ENGLISH & SCOTCH MASTER MASONS'  
APRONS.

ROYAL ARCH APRONS & SASHES.

ROYAL ARCH & MARK JEWELS.

GAUNTLETS, COLLARS. &c.

*Any other description imported to order.*



VICTORIA, B.C.



## WHOLESALE LIST.

CARPETS—Tapestry and Brussels.

HUDSON'S BAY BLANKETS—White and  
Coloured—2½ and 3 points.

WOOL DAMASKS.

TABLE COVERS—Victoria and others.

AMERICAN LEATHER CLOTH AND OIL  
BAIZE.

ALHAMBRA QUILTS.

WHITE TOILET QUILTS.

BED TICKS.

CARPET BAGS—Brussels and Venetian, and  
Leather Cloth.

LACE AND LENO CURTAINS.

SHIRTS—Regatta, Hickory and Linsey.

SHIRTS—Florentine, Crimean, Long Cloth,  
and Spun.

OVER SHIRTS—Drabbett and Dark Tweed.

PAPER COLLARS AND CUFFS.

HOSIERY—

Men's Half Hose.

Women's and Children's.

Vests and Pants.

Fleecy and all other descriptions.

## WHOLESALE LIST *Continued.*

SCOTCH AND MANCHESTER GOODS  
OF EVERY DESCRIPTION.

AMERICAN DRILLING.

COLOURED AND FANCY FLANNELS.

BLUE DENNIN.

IRISH LINENS.

TOWELS.

LADIES' AND CHILDREN'S UNDER-  
CLOTHING.

CORSETS.

STEEL SKIRTS.

DRESS GOODS IN EVERY VARIETY.

WOOLLEN AND GALA PLAIDS—Cheaper  
than ever produced.

FRENCH MERINOES.

ALPACAS.

COBURGS.

PRINTS FOR INDIAN TRADE.

PRINTS AND MUSLINS.

BALMORAL SKIRTS.

WINSEY AND OTHER SKIRTINGS.



## WHOLESALE LIST *Continued.*

CAMBRIC HANDKERCHIEFS, 1, 2, 3.

PRINTED BORDER, Ditto.

COLOURED COTTON POCKETS.

CORAHS.

BLACK DUCAPE HANDKERCHIEFS.

UNION BANDANNAS.

MEN'S TIES AND SCARFS.

GLOVES—Cape Lined Lamb.

MITTS—Ditto ditto

WOOLLEN CLOTHS.

TROUSERINGS AND VESTINGS.

SHAWLS—Tasmania or Antola, Cashmere and  
Indiana, Queensland and all other varieties.

MANTLES—Cloth and Silk.

STRAW AND MILLINERY HATS AND  
BONNETS TRIMMED & UNTRIMMED.

DRESS TRIMMINGS OF EVERY DE-  
SCRIPTION.

RIBBONS—Cord Edge, Satin and Grosgrain.

RIBBON VELVETS.

## WHOLESALE LIST *Continued.*

BELT RIBBON.

LADIES' BELTS.

HABERDASHERY OF EVERY DESCRIPTION.

MACHINE SILK AND COTTON.

BRACES.

LACES OF EVERY DESCRIPTION.

LACE FALLS.

GOSSAMER AND WOVE BAREGE.

MADEIRA AND SCOTCH EMBROIDERIES.

OIL CLOTHS.

### MEN'S CLOTHING—

Brown Linen Sack Coats.

Blue Serge ditto

Black Alpaca ditto

Tweed ditto

Blue Serge Suits.

White & Drab Moleskin Trousers,	} with fly fronts and American pockets.
White and Drab Cord Trousers,	

Fancy Cotton Trousers.

Rastrick Tweed ditto

Blue Pilot ditto

Fancy Tweed ditto

Cotton Canvas ditto

# TURNER, BEETON & TUNSTALL, January.

M D	W D	Remarkable Events, &c.	Sun rises	Sun sets
			h m	h m
1	Th	Union of Gt. Britain & Ireland, 1801	7 55	+ 13
2	F	General Wolfe b. 1727	7 54	+ 14
3	S	Battle of Martinique, 1807	7 54	+ 15
4	S	Battle of Nancy, 1477	7 54	+ 16
5	M	Duke of York d. 1827	7 54	+ 18
6	Tu	<i>Epiphany.</i> Twelfth Day	7 54	+ 19
7	W	Calais re-taken, 1558	7 53	+ 20
8	Th	Lieut. Waghorn d. 1850	7 53	+ 21
9	F	Napoleon III. d. 1873	7 53	+ 22
10	S	Lavater d. 1801	7 52	+ 23
11	S	1 Sunday after Epiphany	7 52	+ 25
12	M		7 51	+ 26
13	Tu		7 51	+ 27
14	W		7 50	+ 29
15	Th	Orsini Plot, 1851	7 49	+ 30
16	F	Battle of Corunna	7 49	+ 31
17	S	Swan River Settlement, 1824	7 48	+ 33
18	S	2 Sunday after Epiphany	7 47	+ 35
19	M		7 46	+ 36
20	Tu	Address to the Queen, praying for Confederation, passed	7 45	+ 38
21	W	Legislative Council, 1871	7 44	+ 39
22	Th	Royal Exchange opened, 1571	7 43	+ 40
23	F	Opening of First Legislative Council after receiving the Colonies'	7 42	+ 42
24	S	Act at New Westminster, by Gov. Seymour, 1867	7 41	+ 44
25	S	Battle of Aliwal, 1846	7 40	+ 45
26	M	Napoleon III. m. 1853	7 39	+ 47
27	Tu	Charles I. beh. 1619	7 38	+ 49
28	W	Marquis of Lansdowne d. 1863	7 36	+ 50
29	Th		7 35	+ 52
30	F		7 34	+ 53
31	S		7 32	+ 55

### *Phases of the Moon.*

○	Full moon	2d.	10h.	50m.	morning.
☾	Last quarter	10	11	42	morning.
☽	New moon	17	11	46	afternoon.
☾	First quarter	24	4	29	afternoon.

In apogee, 8d. 7h. aftn.    In perigee, 20d. 1h. aftn.

SOLE AGENTS FOR  
**ALEXANDRE'S GLOVES.**

# TURNER, BEETON & TUNSTALL,

## February.

M D	W D	Remarkable Events, &c.	Sun rises	Sun sets
			h m	h m
1	S	Septuagesima Sunday	7 31	4 57
2	M		7 30	4 58
3	Tu	Sebastopol Docks destroyed, 1856	7 28	5 0
4	W		7 27	5 2
5	Th	Battle of Plassey, 1757	7 25	5 3
6	F	Charles II. d. 1685	7 24	5 5
7	S	Charles Dickens b. 1812	7 22	5 6
8	S	Sexagesima Sunday	7 21	5 8
9	M		7 19	5 10
10	Tu	Queen Victoria mar. 1840	7 18	5 12
11	W	Assembly at Bordeaux, 1871	7 16	5 13
12	Th		7 14	5 15
13	F	Insurrection in Vienna, 1848	7 12	5 16
14	S	<i>St. Valentine's Day</i>	7 11	5 18
15	S	Opening of Legislative Council	7 9	5 20
16	M	on Confederation Debate, by	7 7	5 21
17	Tu	Governor Musgrave, 1870.	7 5	5 23
18	W	First Provincial Parl. after	7 4	5 24
19	Th	Confederation, opened by	7 2	5 26
20	F	Lieut. Gov. Trutch, 1872.	7 0	5 27
21	S	Peace Negotiations opened, 1871	6 58	5 29
22	S	First Sunday in Lent	6 57	5 30
23	M		6 55	5 32
24	Tu	<i>St. Matthias</i>	6 53	5 34
25	W	Sir Christopher Wren d. 1723	6 51	5 35
26	Th		6 49	5 37
27	F	Alfred Waddington d. 1872	6 47	5 38
28	S	Corn Laws repealed, 1849	6 45	5 40

### *Phases of the Moon.*

○	Full moon	.....	1d.	3h.	22m.	morning.
☾	Last quarter	.....	9	8	15	morning.
●	New moon	.....	16	11	1	morning.
☽	First quarter	.....	23	2	32	morning.

In apogee, 5d. 5h. aftn.    In perigee, 17d. 5h. aftn.

FOR  
BEAVERS, DOESKINS, BROADCLOTHS,  
&c., &c.

# TURNER, BEETON & TUNSTALL, March.

M D	W D	Remarkable Events, &c.	Sun rises	Sun sets
			h m	h m
1	S	Hon. M. Rudolph, M.L.C. Nova Scotia, d. 1872	6 43	5 42
2	M		6 41	5 43
3	Tu		6 39	5 45
4	W	Menai Bridge opened, 1840	6 37	5 46
5	Th	Dr. Arne d. 1778	6 35	5 48
6	F		6 33	5 50
7	S	Entry Princess Alexandra into City, 1863	6 31	5 51
8	S	3rd Sunday in Lent	6 29	5 53
9	M		6 27	5 54
10	Tu	Prince of Wales mar. 1863	6 25	5 56
11	W	Wm. Huskisson b. 1770	6 23	5 57
12	Th	Sheffield Reservoir burst, 1864	6 21	5 58
13	F	Sir T. M. Talfourd d. 1851	6 19	6 0
14	S		6 17	6 1
15	S	4th Sunday in Lent	6 15	6 3
16	M	Duchess of Kent d. 1851	6 13	6 4
17	Tu	<i>St. Patrick</i>	6 11	6 6
18	W	Princess Louise born 1848	6 9	6 7
19	Th		6 7	6 9
20	F	Sir I. Newton d. 1726	6 5	6 10
21	S	Princess Louise mar. 1871	6 3	6 12
22	S	5th Sunday in Lent	6 1	6 13
23	M		5 59	6 15
24	Tu	Queen Elizabeth d. 1603	5 57	6 16
25	W	<i>Lady Day</i>	5 54	6 18
26	Th	Sir J. Vanbrugh d. 1726	5 52	6 19
27	F	Gen. Abercrombie d. 1801	5 50	6 21
28	S	Legislative Council, the last pro-rogued by Gov. Musgrave, 1870	5 48	6 22
29	S		5 46	6 24
30	M		5 44	6 25
31	Tu	Beethoven d. 1827	5 42	6 27

### Phases of the Moon.

- Full moon ..... 2d. 9h. 3m. afternoon.
- ◐ Last quarter ..... 11 1 20 morning.
- New moon ..... 17 8 18 afternoon.
- ◑ First quarter ..... 24 2 18 afternoon.

In apogee, 4d. 12h. mid. In perigee, 18d. 5h. morn.

LARGEST ASSORTMENT OF  
Dress Goods in British Columbia.

# TURNER, BEETON & TUNSTALL,

## April.

M D	W D	Remarkable Events,*&c.	Sun rises	Sun sets
			h m	h m
1	W	William Harvey b. 1578	5 40	6 28
2	Th	At N. Westminster, Vict., voted	5 38	6 29
3	F	the Capita, by 14 to 5, 1868	5 36	6 31
4	S	Public Meeting on liberty of the	5 34	6 32
5	S	Easter Sunday. [Press, Vict., 1859]	5 32	6 33
6	M		5 30	6 35
7	Tu	Prince Leopold b. 1853	5 28	6 36
8	W	Gov. Kennedy arr. about 8th, 1865	5 26	6 38
9	Th	Gen. Lee surrounded 1865	5 24	6 39
10	F	Battle of Toulouse, 1814	5 22	6 40
11	S	Opening of Session of Parliament	5 20	6 42
12	S	at Ottawa, 1872	5 18	6 43
13	M	Laying corner stone of St. John's	5 16	6 45
14	Tu	Church, 1860	5 14	6 46
15	W		5 12	6 48
16	Th	Battle of Culloden, 1746	5 9	6 50
17	F	Benj. Franklin d. 1790	5 7	6 52
18	S	Judge Jeffries d. 1689	5 5	6 54
19	S	2nd Sunday after Easter	5 3	6 55
20	M	Napoleon III. b. 1808	5 2	6 56
21	Tu	Omar Pasha d. 1871	5 0	6 58
22	W	Oceana bombarded, 1854	4 58	6 59
23	Th	St. George's Day	4 57	7 0
24	F	Daniel Defoe d. 1731	4 55	7 1
25	S	Princess Alice b. 1843	4 53	7 3
26	S	3rd Sunday after Easter	4 51	7 4
27	M		4 49	7 6
28	Tu	Siege of Paris, 1871	4 48	7 7
29	W	Admiral Ruyter d. 1676	4 46	7 9
30	Th	Duchess of Gloucester d. 1857	4 44	7 10

### Phases of the Moon.

○ Full moon	.....	1d.	3h.	6m.	afternoon.
☾ Last quarter	.....	9	2	6	afternoon.
● New moon	.....	16	5	39	morning.
☽ First quarter	.....	24	3	50	morning.
In apogee, 1d. 1h. morn. In perigee, 15d. 3h. morn.					
In apogee, 28d. 8h. morn.					

For, the Perfect Fitting

## FRENCH CORSET.

# TURNER, BEETON & TUNSTALL,

## May.

M D	W D	Remarkable Events, &c.	Sun rises	Sun sets
			h m	h m
1	F	Open. of Sisters of St. Ann School	4 44	7 11
2	S	Building, 1872	4 42	7 12
3	S	4th Sunday after Easter	4 40	7 13
4	M		4 38	7 15
5	Tu	Buonaparte d. 1821	4 37	7 16
6	W	Earl Ferrers executed, 1760	4 35	7 18
7	Th	Sir J. Suckling d. 1641	4 33	7 20
8	F		4 31	7 21
9	S	Schiller d. 1805	4 30	7 22
10	M	Rogation Sunday	4 29	7 24
11	S		4 27	7 25
12	Tu	Dublin Exhibition opened, 1853	4 26	7 27
13	W	Dep. of B.C. delegates to Ottawa, '70	4 24	7 28
14	Th	Laying found. stone Holy Trinity	4 23	7 29
15	F	Church, N. Westminster, 1868.	4 22	7 31
16	S	Launch of steamer "Col.	4 20	7 32
17	S	Moody," 1859	4 19	7 33
18	M		4 18	7 35
19	Tu	Anne Boleyn executed, 1536	4 16	7 36
20	W	Duke of Cambridge b. 1819	4 15	7 37
21	Th	Earthquake in Kent, 1382	4 14	7 39
22	F		4 13	7 40
23	S	Sir J. Franklin sailed 1854	4 12	7 41
24	S	End of H.B.C.'s sole right to trade	4 11	7 43
25	M	Vancouver Island, 1859	4 10	7 44
26	Tu	[& 63 others, 1871	4 9	7 45
27	W	Communist mur. Archb. of Paris	4 8	7 46
28	Th	Paris Insurrection supp., 1871	4 7	7 47
29	F	Restoration of Charles II. 1660	4 6	7 48
30	S	Pope d. 1741	4 5	7 49
31	S	Trinity Sunday	4 4	7 50

### *Phases of the Moon.*

☾	Full moon	.....	1d.	7h.	56m.	morning.
☾	Last quarter	.....	8	10	59	afternoon.
☾	New moon	.....	15	2	3	afternoon.
☾	First quarter	.....	22	7	5	afternoon.
☾	Full moon	.....	30	10	33	afternoon.

In perigee, 13d. 10h. aftn. In apogee, 25d. 11h. aftn.

FOR

## BALBRIGGAN HOSIERY.

# TURNER, BEETON & TUNSTALL,

## June.

M D	W D	Remarkable Events, &c.	Sun rises	Sun sets
			h m	h m
1	M	Lord Howe's victory, 1794	4 4	7 51
2	Tu	Gordon riots, 1780	4 3	7 52
3	W	Cobden born, 1804	4 3	7 53
4	Th	George III. b. 1738	4 2	7 54
5	F	Socrates b. 468	4 2	7 55
6	S	Count Cavour d. 1861	4 1	7 55
7	S	1st Sunday after Trinity	4 1	7 56
8	M		4 0	7 57
9	Tu	Charles Dickens d. 1870	4 0	7 58
10	W	Gov. Seymour d. 1869	4 0	7 58
11	Th	<i>St. Barnabas</i>	4 0	7 59
12	F		4 0	7 59
13	S	Agricola d. A.D. 40	3 59	8 0
14	S	Custom-house removed to New Westminster, 1859	3 59	8 0
15	M		3 59	8 1
16	Tu	Earl Canning d. 1862	3 59	8 1
17	W	<i>St. Alban</i>	3 59	8 2
18	Th	Exp. of gunpowder & loss of life on board "Forwood," 1860	3 59	8 2
19	F		3 59	8 2
20	S	19th—Wreck of steamer "Active," Humbold & Co., 1870	3 59	8 2
21	S		3 59	8 3
22	M	20th—Gov. Musgrave marr., S. Francisco, 1870	4 0	8 3
23	Tu		4 0	8 3
24	W	22nd—Two shocks earthquake exp. at Vancouver Island, 1860	4 0	8 4
25	Th		4 1	8 4
26	F	Louis Buonaparte d. 1846	4 1	8 4
27	S	Dr. Dodd executed 1777	4 1	8 4
28	S	Collegiate School, Victoria, open. under Rev. A. C. Garratt, 1860	4 2	8 4
29	M		4 2	8 4
30	Tu	Argyll beheaded 1685	4 2	8 4

### Phases of the Moon.

☾	Last quarter	.....	7d.	5h.	4m.	morning.
●	New moon	.....	13	16	39	afternoon.
☽	First quarter	.....	21	11	47	morning.
☾	Full moon	.....	29	10	34	morning.

In perigee, 1cd. 6h. aftn. In apogee, 22d. 4h. aftn.

FOR

## Best British Hosiery.



# TURNER, BEETON & TUNSTALL,

## July.

M D	W D	Remarkable Events, &c.	Sun rises	Sun sets
			h m	h m
1	W	Dominion Day. Jas. Bay Bridge	+ 3	8 4
2	Th	first open to public, 1859	+ 4	8 3
3	F	Battle of Sadowa, 1866	+ 5	8 3
4	S	Declaratn. of American Indep., 1776	+ 5	8 3
5	S	5th Sunday after Trinity	+ 6	8 2
6	M		+ 7	8 2
7	Tu	First arrival of st. "Ferwood" from	+ 8	8 2
8	W	England and S. Francisco	+ 9	8 1
9	Th	Holland united to France, 1810	+ 10	8 0
10	F	John Calvin b. 1509	+ 11	7 59
11	S	Erasmus d. 1536	+ 12	7 59
12	S	6th Sunday after Trinity	+ 13	7 58
13	M		+ 14	7 57
14	Tu	Bastile destroyed, 1789	+ 15	7 56
15	W	St. Swithin's Day	+ 16	7 56
16	Th	[and Prussia, 1870	+ 17	7 55
17	F	Declaration of War bet. France	+ 18	7 54
18	S	Hampden killed, 1643	+ 19	7 53
19	S	Union of B. C. with Canada, 1871	+ 20	7 52
20	M	Confed. with Dominion accom., 1871	+ 21	7 51
21	Tu		+ 23	7 50
22	W	Gibraltar taken 1701	+ 24	7 49
23	Th	1st English newspaper pub. 1588	+ 25	7 48
24	F	First concesson of pre-empton	+ 26	7 46
25	S	rights to settlers, 1859	+ 27	7 45
26	S	8th Sunday after Trinity	+ 28	7 44
27	M		+ 30	7 43
28	Tu	Landing of three Comp. American	+ 31	7 42
29	W	troops, San Juan, 1859	+ 32	7 40
30	Th	Wm. Penn (quaker) d. 1718	+ 33	7 39
31	F	Cook's first voyage, 1768	: 35	7 38

### Phases of the Moon.

☾	Last quarter	6d.	gh.	48m.	morning.
●	New moon	13	8	24	morning.
☽	First quarter	21	5	18	morning.
○	Full moon	28	8	29	afternoon.

In perigee, 6d. gh. aftn. In apogee, 19d 10h. morn.

FOR  
HORROCKSES LONG CLOTHS.

# TURNER, BEETON & TUNSTALL,

## August.

M D	W D	· Remarkable Events, &c.	Sun rises	Sun sets
			h m	h m
1	S	<i>Lammas Day</i>	4 36	7 36
2	S	9th Sunday after Trinity	4 37	7 35
3	M		4 39	7 33
4	Tu	Admiral Duncan d. 1804	4 40	7 31
5	W	Lord Howe d. 1799	4 42	7 30
6	Th	Anne Shakespeare d. 1623	4 43	7 28
7	F	Queen Caroline d. 1821	4 44	7 27
8	S	Canning d. 1827	4 46	7 25
9	S	10th Sunday after Trinity	4 48	7 24
10	M		4 50	7 22
11	Tu	Rt. Hon. J. Wilson d. 1860	4 51	7 20
12	W	Rev. Rowland Hill b. 1744	4 52	7 19
13	Th	Battle of Blenheim, 1744	4 53	7 17
14	F	Lieut.-Gov. Trutch arr., 1871. Exp.	4 54	7 15
15	S	on board "Emily Harris," 3	4 55	7 13
16	S	lives lost, 1871	4 56	7 12
17	M	15th—Laying found. st. Wesleyan	4 58	7 10
18	Tu	Chap., Vic. by Geo. Douglas, '59	4 59	7 8
19	W	Hon. H. L. Langevin arr. Victoria,	5 0	7 7
20	Th	Robert Herrick d. 1591 1871	5 2	7 5
21	F	James Crichton b. 1561	5 3	7 3
22	S		5 4	7 1
23	S	Gov. Musgrave arr. 9 a.m., 1869	5 6	6 59
24	M		5 7	6 57
25	Tu	Public meeting to discuss San Juan	5 9	6 55
26	W	Question, 1859	5 10	6 53
27	Th	W. India Docks opened, 1802	5 12	6 51
28	F	Divorce Bill passed, 1857	5 13	6 49
29	S	Queen visited Ireland, 1853	5 15	6 47
30	S	13th Sunday after Trinity	5 16	6 45
31	M		5 17	6 43

### Phases of the Moon.

☾	Last quarter	.....	4d.	2h.	33m.	afternoon.
☾	New moon	.....	11	7	46	afternoon.
☽	First quarter	.....	19	10	39	afternoon.
☽	Full moon	.....	27	5	15	morning.
	In perigee,	1d.	12h.	mid.	In apogee,	17d. 5h. morn.
					In perigee,	29d. 4h. morn.

FOR

## LACE AND MUSLIN CURTAINS.

# TURNER, BEETON & TUNSTALL, September.

M D	W D	Remarkable Events, &c.	Sun	
			rises	sets
			h m	h m
1	Tu	Partridge shooting commences	5 19	6 41
2	W	Surrender of Napoleon at Sedan, '70	5 20	6 39
3	Th	Treaty of Peace bet. Great Britain	5 22	6 37
4	F	and America, 1783	5 23	6 35
5	S	French Republic proclaimed, 1870	5 24	6 33
6	S	14th Sunday after Trinity	5 25	6 31
7	M	"Captain" founded 1870	5 26	6 29
8	Tu	Sebastopol taken, 1855	5 28	6 27
9	W		5 29	6 25
10	Th	Sheridan d. 1738	5 31	6 23
11	F	Thompson b. 1700	5 32	6 20
12	S	Prince Louis of Hesse b. 1837	5 34	6 18
13	S	15th Sunday after Trinity	5 35	6 16
14	M	Mission school-house for Indians	5 37	6 14
15	Tu	opened, 1860	5 38	6 12
16	W		5 40	6 10
17	Th	College school, Victoria, re-opened	5 41	6 8
18	F	under Rev. C. T. Woods, 1860	5 43	6 6
19	S	Humboldt b. 1769	5 44	6 4
20	S	16th Sunday after Trinity	5 45	6 1
21	M	<i>St. Matthee</i>	5 47	5 59
22	Tu		5 48	5 57
23	W	Battle of Assaye, 1803	5 49	5 55
24	Th	Visct. Hardinge d. 1856	5 51	5 53
25	F	Relief of Lucknow, 1857	5 52	5 51
26	S	Balaclava taken, 1854	5 54	5 49
27	S	17th Sunday after Trinity	5 55	5 47
28	M		5 57	5 44
29	Tu	Michaelmas Day	5 58	5 42
30	W		6 0	5 40

### *Phases of the Moon.*

☾ Last quarter	.....	2d.	Sh. 40m.	afternoon.
☽ New moon	.....	10	3 57	morning.
☽ First quarter	.....	8	2 51	afternoon.
☽ Full moon	.....	25	1 53	afternoon.

In apogee, 13d. 10h. aftn.    In perigee, 26d. 10h. morn.

FOR

## CURTAIN DAMASKS AND REPS.

# TURNER, BEETON & TUNSTALL,

## October.

M	W	Remarkable Events, &c.	Sun	Sun
D	D		rises	sets
			h m	h m
1	Th	Destruction of Christ Church	6 1	5 38
2	F	Cathedral by Fire, 1869	6 3	5 36
3	S	Bishop Heber d. 1833	6 4	5 34
4	S	18th Sunday after Trinity	6 6	5 31
5	M		6 8	5 29
6	Tu	Peace with America, 1782	6 9	5 27
7	W	Edgar Allen Poe d. 1849	6 11	5 25
8	Th	Victory at Agra, 1857	6 12	5 24
9	F	Michael Cervantes b. 1517	6 14	5 22
10	S		6 15	5 20
11	S	19th Sunday after Trinity	6 17	5 18
12	M		6 18	5 16
13	Tu	Gold discov. on Germansen Creek,	6 19	5 14
14	W	Omin. a. 1870	6 21	5 12
15	Th	Latimer burnt, 1555	6 22	5 10
16	F	Soissons surrendered. 1870	6 24	5 8
17	S	Houses of Parliament burnt. 1834	6 27	5 6
18	S	20th Sunday after Trinity	6 27	5 4
19	M		6 28	5 2
20	Tu	Battle of Navarino, 1827	6 30	5 0
21	W	Battle of Trafalgar, 1805	6 31	+ 58
22	Th	Coleridge born, 1772	6 33	+ 57
23	F	Departure of Gov. Kennedy, 1866	6 34	+ 55
24	S	Part explosion of st. "Caledonia,"	6 36	+ 53
25	S	one person killed, 1859	6 37	+ 51
26	M		6 39	+ 50
27	Tu	Capt. Cook b., 1728	6 40	+ 48
28	W	St. Simon and St. Jude	6 41	+ 47
29	Th	Sir W. Raleigh beheaded, 1618	6 42	+ 45
30	F	Fire at Tower of London, 1841	6 44	+ 44
31	S	Allhallow Eve	6 45	+ 43

### Phases of the Moon.

☾	Last quarter	.....	2d.	5h.	24m.	morning.		
☾	New moon	.....	10	2	48	morning.		
☽	First quarter	.....	18	5	16	morning.		
☽	Full moon	.....	24	11	7	afternoon.		
☾	Last quarter	.....	31	5	46	afternoon.		
	In apogee,	11d.	6h.	morn.	In perigee,	24d.	6h.	afn.

FOR  
LADIES' & CHILDREN'S UNDERCLOTHING.

# TURNER, BEETON & TUNSTALL,

## November.

M D	W D	Remarkable Events, &c.	Sun rises	Sun sets
			h m	h m
1	S	22nd Sunday after Trinity	6 47	+ 41
2	M		6 48	+ 39
3	Tu	Fall of Acre, 1840	6 50	+ 37
4	W	George Peabody d. 1869	6 52	+ 36
5	Th	E. S. Evans, Treas. Clerk, drowned	6 53	+ 34
6	F	Princess Charlotte d. 1817 1860	6 55	+ 32
7	S	Gov. Seymour arr. Victoria. 1866	6 57	+ 31
8	S	23rd Sunday after Trinity	6 59	+ 29
9	M	U. H. & I. Company organized	7 0	+ 28
10	Tu	against fires, 1859	7 2	+ 26
11	W	Lord Fairfax d. 1671	7 4	+ 25
12	Th	Colonies of B. Columbia and Van-	7 6	+ 23
13	F	couver first proclaimed, 1858	7 7	+ 22
14	S		7 9	+ 21
15	S	Victoria proclaimed capital of	7 10	+ 20
16	M	United Colonies, 1868	7 11	+ 19
17	Tu		7 13	+ 18
18	W	Sir D. Wilkie b. 1785	7 14	+ 17
19	Th	Proclamation of Union of Colonies	7 16	+ 16
20	F	at N. Westminster, by Gov.	7 17	+ 15
21	S	Seymour, 1866	7 19	+ 14
22	S	First Newspaper publ. in	7 20	+ 13
23	M	Victoria, "Victoria Gazette"	7 22	+ 12
24	Tu	Lord Lyons d. 1858	7 23	+ 11
25	W	Sir F. Chantrey d. 1841	7 25	+ 10
26	Th	J. I. Macadam d. 1830	7 26	+ 9
27	F	Kars surrendered, 1855	7 27	+ 8
28	S	Cardinal Wolsey d. 1530	7 29	+ 8
29	S	1st Sunday in Advent	7 30	+ 7
30	M	St. Andrew	7 32	+ 6

### Phases of the Moon.

☾	New moon	.....	8d.	9h.	20m.	afternoon.
☽	First quarter	.....	16	5	40	afternoon.
☾	Full moon	.....	23	9	31	morning.
☽	Last quarter	.....	30	10	15	morning.

In apogee, 7d. 7h. morn. In perigee, 22d. 10h. morn.

FOR  
FLANNELS AND BLANKETS.

# TURNER, BEETON & TUNSTALL,

## December.

M D	W D	Remarkable Events, &c.	Sun	
			rises	sets
			h m	h m
1	Tu	Princess of Wales b. 1844	7 33	+ 6
2	W	Opening of St. Ann's Sisters School,	7 34	+ 5
3	Th	John Flaxman d. 1826 [1860]	7 35	+ 5
4	F		7 37	+ 4
5	S	Mozart d. 1791	7 38	+ 4
6	S	2nd Sunday in Advent	7 39	+ 4
7	M	Marshal Ney shot, 1815	7 40	+ 3
8	Tu	Miss Zoe Musgrave, 1870	7 41	+ 3
9	W	Joseph Bramah d. 1814	7 42	+ 3
10	Th		7 43	+ 3
11	F	Sir D. Brewster b. 1781	7 44	+ 3
12	S	Cromwell declared Protector, 1653	7 45	+ 3
13	S	3rd Sunday in Advent	7 46	+ 3
14	M	Prince Consort d., 1851	7 47	+ 3
15	Tu	Bolingbroke d. 1751	7 48	+ 3
16	W		7 48	+ 3
17	Th	First Legislative Council opened in	7 49	+ 4
18	F	Victoria, under Gov. Seymour,	7 49	+ 4
19	S	Twofold Bay disc. 1797 [1868]	7 50	+ 5
20	S	4th Sunday in Advent	7 50	+ 5
21	M	St. Thomas. Shortest day	7 51	+ 5
22	Tu	Battle of Ismael, 1790	7 51	+ 6
23	W	General Root d. 1846	7 52	+ 7
24	Th	Peace with America, 1814	7 52	+ 7
25	F	Col. Moody, Lieut.-Gov., arr. 1869	7 53	+ 8
26	S	[Christmas Day.	7 53	+ 8
27	S	1st Sunday after Christmas	7 53	+ 9
28	M	Innocents Day	7 54	+ 10
29	Tu		7 54	+ 11
30	W	Fire at Crystal Palace, 1866	7 54	+ 12
31	Th	Battle of Wakefield, 1460	7 54	+ 13

### Phases of the Moon.

- New moon ..... 8d. 3h. 52m. morning.
  - ☽ First quarter ..... 16 4 11 morning.
  - Full moon ..... 22 8 43 afternoon.
  - ☾ Last quarter ..... 30 6 22 morning.
- In apogee, 4d. 5h. aftn. In perigee, 20d. 4h. aftn.

FOR  
**CHRISTMAS PRESENTS.**

GALVANIZED  
CORRUGATED IRON.

“CASTLE BRAND.”

IRON HOUSES, CHURCHES,  
AND  
Railway Buildings

OF ALL DESCRIPTIONS.

Wrought Iron Tanks, Galvanized and Painted  
Buckets, and Galvanized Vessels of every kind.  
Sheet and Perforated Zinc.  
Galvanized Machine-made Wire Netting.

MANUFACTURED BY

FREDK. BRABY & CO.,  
LIMITED,

Fitzroy Works, Euston Road,  
LONDON.

Estimates and Illustrated Catalogues  
FORWARDED ON APPLICATION.

TURNER, BEETON & TUNSTALL,  
AGENTS.

BRANDY.

THE CHAMPAGNE  
VINEYARD PROPRIETORS' COMPANY,  
OF  
COGNAC.

—  
ESTABLISHED 1849.  
—

Samples and Prices of this Company's  
celebrated COGNAC BRANDIES, in bulk or in  
case, can be obtained of the undersigned, who  
are in receipt of regular consignments.

~~~~~  
TURNER, BEETON & TUNSTALL,

SOLE AGENTS FOR  
BRITISH COLUMBIA.



BEER.

MESSRS.

M. B. FOSTER & SONS,

Bottled Beer Merchants,

BOND STREET,

LONDON.

---

TURNER, BEETON & TUNSTALL,

SOLE AGENTS FOR

BRITISH COLUMBIA.

# ABSTRACT OF METEOROLOGICAL REPORTS

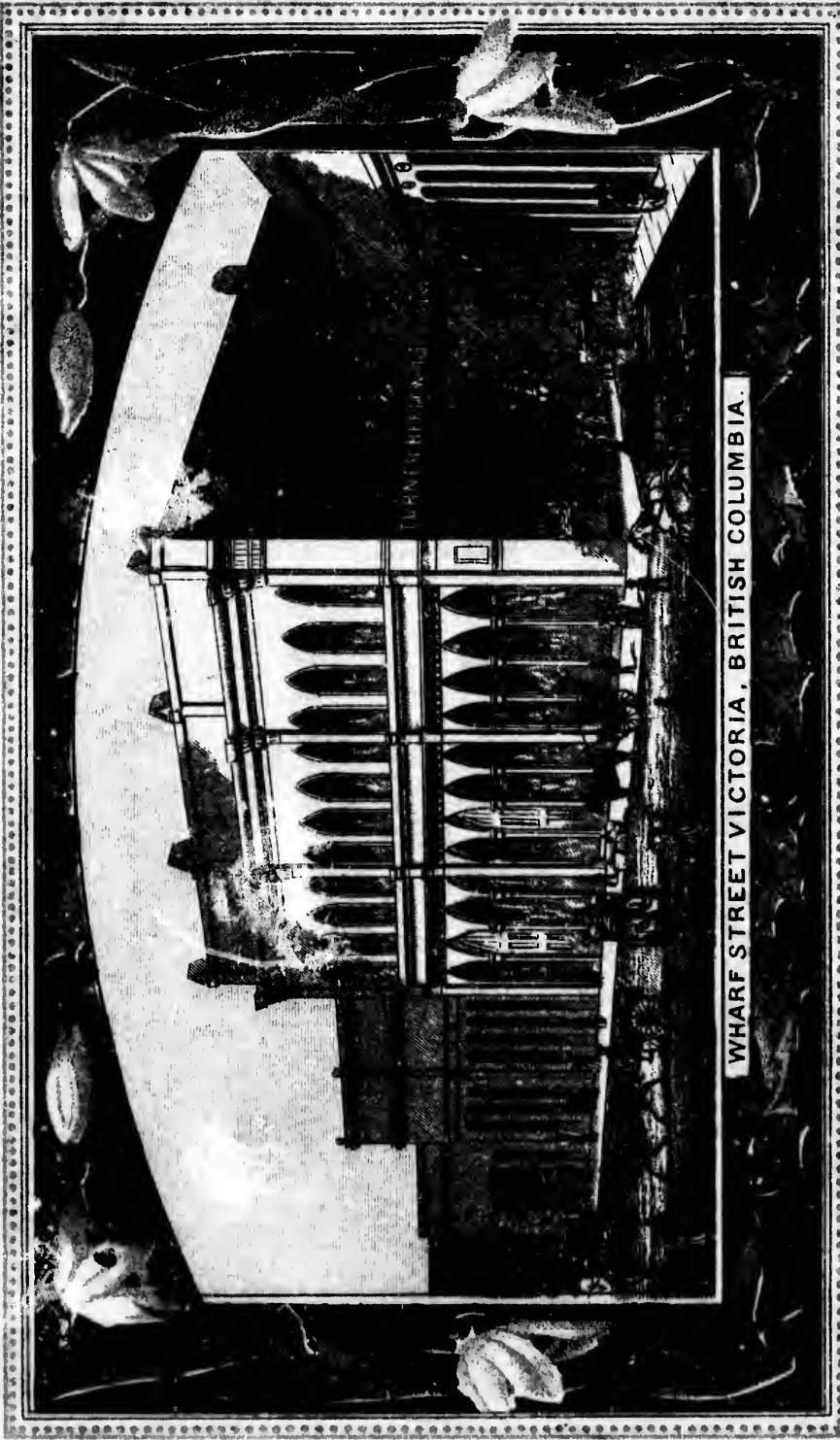
KEPT AT FISGARD LIGHTHOUSE DURING THE YEAR 1872.

| Months of the Year. | Max. min. Barometer. | Minimum of Thermometer. | Minimum of Thermometer. | Maximum of Thermometer. | Average of Maximum Thermometer. | Average of Minimum Thermometer. | Prevailing Winds in this Harbour during each Month. | Average at 9.30 a.m. of |       |       | Average at 3.30 p.m. of |      |       | No. of dry fall each Month. | No. of dry fall each Month. | No. of days (comp. winds) each Month. | Average Temperature of the Season. |
|---------------------|----------------------|-------------------------|-------------------------|-------------------------|---------------------------------|---------------------------------|-----------------------------------------------------|-------------------------|-------|-------|-------------------------|------|-------|-----------------------------|-----------------------------|---------------------------------------|------------------------------------|
|                     |                      |                         |                         |                         |                                 |                                 |                                                     | Bar.                    | Ther. | Fat.  | Ther.                   | Fat. | Ther. |                             |                             |                                       |                                    |
| January . . .       | 30.56                | 29.40                   | 22                      | 78                      | 72                              | 78                              | N.E. and S.W.                                       | 30.32                   | 39    | 29.58 | 42                      | 1.84 | 8     | 1.84                        | 8                           | Winter, 1871-2                        |                                    |
| February . . .      | 30.10                | 29.06                   | 26                      | 75                      | 65                              | 75                              | N.E. and W.                                         | 29.56                   | 42    | 29.97 | 43                      | 5.53 | 11    | 5.53                        | 11                          | Do. 23, N. 1825.                      |                                    |
| March . . .         | 30.35                | 29.45                   | 31                      | 87                      | 68                              | 87                              | S.S.E. W. and S.W.                                  | 29.56                   | 38    | 29.63 | 49                      | 4.29 | 11    | 4.06                        | 10                          | Spring, 70.                           |                                    |
| April . . .         | 30.37                | 29.58                   | 31                      | 97                      | 69                              | 98                              | S.E. to W.                                          | 29.56                   | 40    | 30.00 | 49                      | 2.38 | 11    | 3.19                        | 21                          | Do. 70.                               |                                    |
| May . . .           | 30.24                | 29.68                   | 32                      | 97                      | 73                              | 92                              | S.S.E. to S.S.W.                                    | 30.02                   | 40    | 29.58 | 57                      | 4.48 | 8     | 2.35                        | 27                          | Night, 39.                            |                                    |
| June . . .          | 30.25                | 29.65                   | 33                      | 105                     | 78                              | 97                              | S.E. to W.                                          | 29.96                   | 45    | 29.66 | 61                      | 1.22 | 4     | 2.39                        | 26                          | Summer.                               |                                    |
| July . . .          | 30.28                | 29.84                   | 33                      | 91                      | 70                              | 90                              | S.E. to W.                                          | 29.60                   | 70    | 29.59 | 63                      | 3.55 | 4     | 3.75                        | 27                          | Day, 79.                              |                                    |
| August . . .        | 30.16                | 29.76                   | 32                      | 75                      | 71                              | 79                              | S.E. to W.                                          | 29.61                   | 63    | 29.94 | 63                      | 3.66 | 4     | 2.29                        | 23                          | Night, 49.                            |                                    |
| September . . .     | 30.35                | 29.92                   | 30                      | 100                     | 71                              | 99                              | N. and E.S.E. to W.                                 | 29.79                   | 57    | 28.95 | 56                      | 4.72 | 5     | 3.17                        | 17                          | Autumn.                               |                                    |
| October . . .       | 30.23                | 29.61                   | 28                      | 83                      | 72                              | 87                              | N.E. and E. to W.                                   | 29.59                   | 52    | 29.58 | 51                      | 2.05 | 11    | 2.05                        | 11                          | Day, 67.                              |                                    |
| November . . .      | 30.48                | 29.25                   | 11                      | 80                      | 59                              | 81                              | S.W. to N.E.                                        | 30.04                   | 41    | 30.02 | 42                      | 3.14 | 10    | 3.14                        | 10                          | Night, 36.                            |                                    |
| December . . .      | 30.52                | 28.70                   | 15                      | 90                      | 60                              | 89                              | N.W. to N.E.                                        | 29.53                   | 39    | 29.42 | 40                      | 4.45 | 12    | 4.45                        | 12                          |                                       |                                    |

MEM.—Total fall of Rain this year, 25' 40", against 23' 47" in 1871.

FISGARD LIGHTHOUSE, Esquimaux Harbour,  
 In the Province of British Columbia,  
 W.M. H. BEVIS,  
 Meteorologist.  
 1st January, 1873.





WHARF STREET VICTORIA, BRITISH COLUMBIA.

