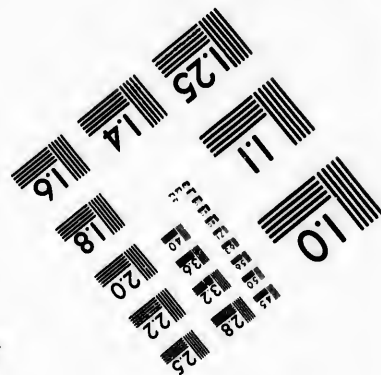
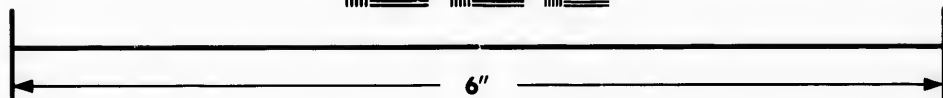
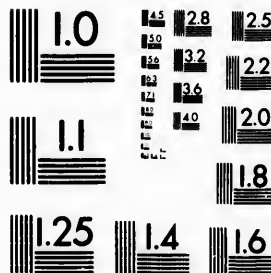


**IMAGE EVALUATION  
TEST TARGET (MT-3)**



**Photographic  
Sciences  
Corporation**

23 WEST MAIN STREET  
WEBSTER, N.Y. 14580  
(716) 672-4503



**CIHM/ICMH  
Microfiche  
Series.**

**CIHM/ICMH  
Collection de  
microfiches.**



Canadian Institute for Historical Microreproductions / Institut canadien de microreproductions historiques



**© 1982**

Technical and Bibliographic Notes/Notes techniques et bibliographiques

The Institute has attempted to obtain the best original copy available for filming. Features of this copy which may be bibliographically unique, which may alter any of the images in the reproduction, or which may significantly change the usual method of filming, are checked below.

L'Institut a microfilmé le meilleur exemplaire qu'il lui a été possible de se procurer. Les détails de cet exemplaire qui sont peut-être uniques du point de vue bibliographique, qui peuvent modifier une image reproduite, ou qui peuvent exiger une modification dans la méthode normale de filmage sont indiqués ci-dessous.

- Coloured covers/  
Couverture de couleur
- Covers damaged/  
Couverture endommagée
- Covers restored and/or laminated/  
Couverture restaurée et/ou pelliculée
- Cover title missing/  
Le titre de couverture manque
- Coloured maps/  
Cartes géographiques en couleur
- Coloured ink (i.e. other than blue or black)/  
Encre de couleur (i.e. autre que bleue ou noire)
- Coloured plates and/or illustrations/  
Planches et/ou illustrations en couleur
- Bound with other material/  
Relié avec d'autres documents
- Tight binding may cause shadows or distortion along interior margin/  
La reliure serrée peut causer de l'ombre ou de la distortion le long de la marge intérieure
- Blank leaves added during restoration may appear within the text. Whenever possible, these have been omitted from filming/  
Il se peut que certaines pages blanches ajoutées lors d'une restauration apparaissent dans le texte, mais, lorsque cela était possible, ces pages n'ont pas été filmées.
- Additional comments:  
Commentaires supplémentaires:

- Coloured pages/  
Pages de couleur
- Pages damaged/  
Pages endommagées
- Pages restored and/or laminated/  
Pages restaurées et/ou pelliculées
- Pages discoloured, stained or foxed/  
Pages décolorées, tachetées ou piquées
- Pages detached/  
Pages détachées
- Showthrough/  
Transparence
- Quality of print varies/  
Qualité inégale de l'impression
- Includes supplementary material/  
Comprend du matériel supplémentaire
- Only edition available/  
Seule édition disponible
- Pages wholly or partially obscured by errata slips, tissues, etc., have been refilmed to ensure the best possible image/  
Les pages totalement ou partiellement obscurcies par un feuillet d'errata, une pelure, etc., ont été filmées à nouveau de façon à obtenir la meilleure image possible.

This item is filmed at the reduction ratio checked below/  
Ce document est filmé au taux de réduction indiqué ci-dessous.

10X	14X	18X	22X	26X	30X
<input type="checkbox"/>	<input type="checkbox"/>	<input type="checkbox"/>	<input type="checkbox"/>	<input checked="" type="checkbox"/>	<input type="checkbox"/>
12X	16X	20X	24X	28X	32X

The copy filmed here has been reproduced thanks to the generosity of:

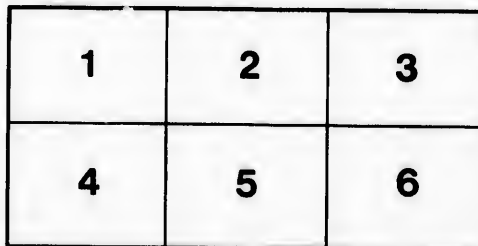
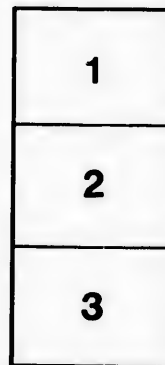
Harold Campbell Vaughan Memorial Library  
Acadia University

The images appearing here are the best quality possible considering the condition and legibility of the original copy and in keeping with the filming contract specifications.

Original copies in printed paper covers are filmed beginning with the front cover and ending on the last page with a printed or illustrated impression, or the back cover when appropriate. All other original copies are filmed beginning on the first page with a printed or illustrated impression, and ending on the last page with a printed or illustrated impression.

The last recorded frame on each microfiche shall contain the symbol  $\rightarrow$  (meaning "CONTINUED"), or the symbol  $\nabla$  (meaning "END"), whichever applies.

Maps, plates, charts, etc., may be filmed at different reduction ratios. Those too large to be entirely included in one exposure are filmed beginning in the upper left hand corner, left to right and top to bottom, as many frames as required. The following diagrams illustrate the method:



L'exemplaire filmé fut reproduit grâce à la générosité de:

Harold Campbell Vaughan Memorial Library  
Acadia University

Les images suivantes ont été reproduites avec le plus grand soin, compte tenu de la condition et de la netteté de l'exemplaire filmé, et en conformité avec les conditions du contrat de filmage.

Les exemplaires originaux dont la couverture en papier est imprimée sont filmés en commençant par le premier plat et en terminant soit par la dernière page qui comporte une empreinte d'impression ou d'illustration, soit par le second plat, selon le cas. Tous les autres exemplaires originaux sont filmés en commençant par la première page qui comporte une empreinte d'impression ou d'illustration et en terminant par la dernière page qui comporte une telle empreinte.

Un des symboles suivants apparaîtra sur la dernière image de chaque microfiche, selon le cas: le symbole  $\rightarrow$  signifie "A SUIVRE", le symbole  $\nabla$  signifie "FIN".

Les cartes, planches, tableaux, etc., peuvent être filmés à des taux de réduction différents. Lorsque le document est trop grand pour être reproduit en un seul cliché, il est filmé à partir de l'angle supérieur gauche, de gauche à droite, et de haut en bas, en prenant le nombre d'images nécessaire. Les diagrammes suivants illustrent la méthode.

ire  
détails  
es du  
modifier  
er une  
filmage

es

errate  
l to

la pelure,  
on à

32X

**MANCHESTER**  
**ROBERTSON &**  
**ALLISON.**

THE  
 LARGEST  
 DRY GOODS HOUSE  
 IN THE MARITIME PROVINCES.

**PICTORIAL & HISTORICAL**  
**A SOUVENIR**  
**ILLUSTRATING EVENTS IN SAINT JOHN. N.B.**

1893  
 /894

DEPARTMENTS  
 MANCHESTER  
 ROBERTSON &  
 ALLISON

- DEPARTMENTS { SILKS VELVETS }
- { MANTELS FURS }
- { CLOTHS FOR LADIES }
- AND GENTLEMEN }
- CARPETS <sup>and</sup> FURNISHINGS
- MILLINERY <sup>and</sup> UNDERWEAR
- DRESS GOODS. <sup>LADIES</sup>
- COTTON, LINEN & FLANNELS.
- LACES, TRIMMINGS & <sup>SMALL WARES</sup>
- TAILORS TRIMMINGS.
- FANCY GOODS <sup>in</sup> GREAT VARIETY.
- GLOVES, HOSIERY, & RIBBONS.
- GENTLEMENS FURNISHINGS.
- BOYS READY MADE CLOTHING.
- TRUNKS, VALISES, & HAND BAGS.
- RUGS, & WATERPROOF COATS

**MANCHESTER, ROBERTSON & ALLISON**

A  
 971.5  
 X

SALES  
OVER  
100  
1/2  
CHESTS  
EVERY  
WEEK

SOLD  
IN  
EVERY  
PROVINCE  
OF  
CANADA  
AND  
STATE  
OF  
MAINE

THE EXPERIENCE OF AN OLD TEA-ROX  
In an old fashioned Teapot as you plainly see,  
I have brewed in a century all kinds of Tea  
Suchong, Oulong, Formosa, Pekoe, and Bohea,  
Congou, Ceylon, Gunpowder of every degree,  
The Boquet I love best and to you recommend,  
Is that wonderful Tea they call UNION BLEND.

UNION BLEND



UNION BLEND

UNION BLEND

UNION BLEND

UNION BLEND

GEO. S. DE FOREST & SONS

Sole Distributors  
13 SOUTH MARKET WHARF  
ST JOHN N.B.

B



A 913  
X

HAWKER & SON

REQUEST YOUR ATTENTION  
ADVERTISEMENTS  
ON THIS  
PAGE.



FROM DEC 1  
18 93

OUR PERFUMERY

IS UNSURPASSED IN  
VARIETY & EXCELLENCE.  
ALL THE LEADING NAMES



MAY BE FOUND  
HANDS



AN  
ILLUSTRATED  
RECORD OF EVENTS  
AND  
SOUVENIR  
PORTRAIT GALLERY  
OF

SAINT JOHN N.B.  
TO  
DEC 1

18 94

TOILET  
BOTTLES, and  
TOILET SETTS, HAIR  
BRUSHES OF ALL KINDS,  
SHAVING SETTS, ETC.

HAWKER & SON

A FULL  
ASSORTMENT  
OF VERY CHOICE  
GOODS FOR PRESENTATION  
BULK PERFUMES &  
SACHET POWDERS AT  
25 CENTS PER OZ

104 Prince William St



HIS HONOR THE LATE LIEUT. GOVERNOR BOYD.



HIS HONOR LIEUT. GOVERNOR FRASER.





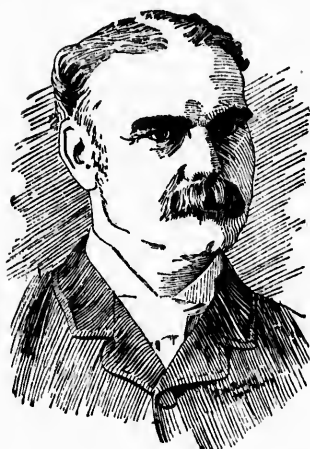
The late JOHN VEATS



The late D. TAPLEY.



The late A.D. F. BLACKADAR



The late GEO. F. SMITH



The late D. McEELLAN,  
Ex-Provincial Secretary.



The late W. MAGEE.



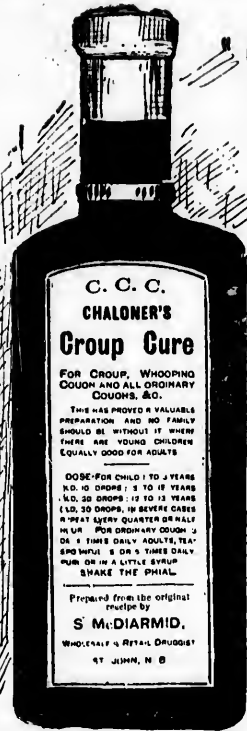
The late J. E. TURNBULL.



The late THOS. F. RAYMOND.



The late THOS. MILL



CHALONER'S COUGH CURE HELPS  
OUR BABY AT ONCE



XMAS 1894

— TRY —

PELEE ISLAND  
WINES.

And you will use no other.

62 UNION ST. NEAR L.C. CK  
St. John, N. B.

ENGLISH **T** BRAKFAST

CHATEAU PELEE MEDOC (CLARET) \$4.50 per doz  
CANADIAN BRANDY Distilled from Pelee I<sup>st</sup> WINES  
Four Crown Scotch Whisky, Old Jamaica Rum  
All kinds of WINES, LIQUORS and Teas.  
E.G. Scovil

FIRE INSURANCE  
CALEDONIAN INSURANCE CO  
EDINBURGH SCOTLAND

THE OLDEST SCOTTISH OFFICE  
Established 1805

COWIE & EDWARDS  
General Agents  
For NEW BRUNSWICK

90 Prince William St  
St. John NB



FRED. HEATHFIELD



FRED PRIEST.



HENRY BARTLETT.

---

PORTRAITS OF CITIZENS LOST

---

---

IN "PRIMROSE" DISASTER.

---



SAMUEL HUTTON



WILLIAM RUSSELL.



JAMES HURLEY.



HARRY HOYT.



THE LATE R. R. BARNES.



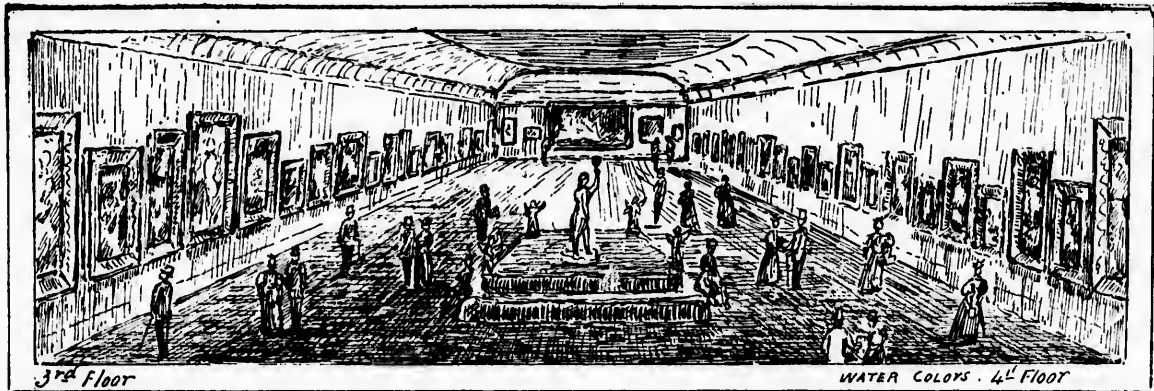
THE LATE GILBERT MURDOCH.



THE EARL OF ABERDEEN.

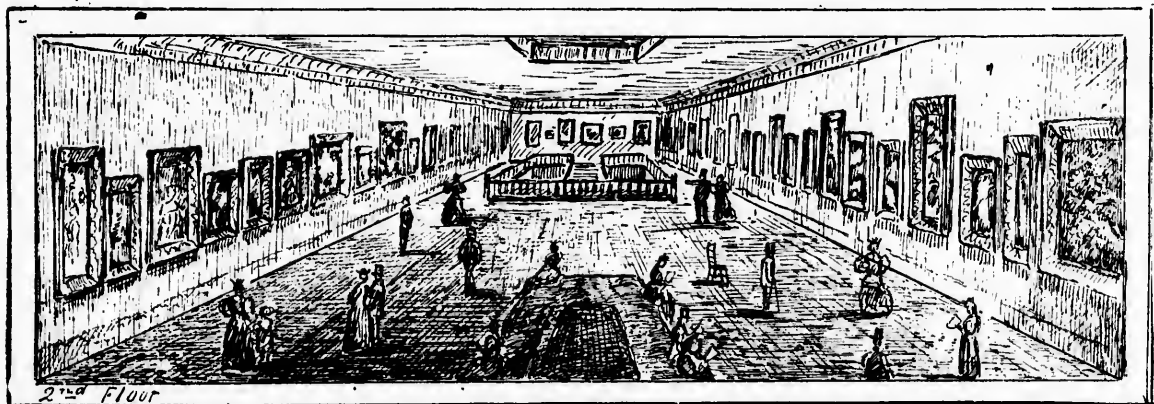


THE COUNTESS OF ABERDEEN.



3<sup>rd</sup> Floor

WATER COLOURS - 4<sup>th</sup> FLOOR



2<sup>nd</sup> Floor



Ground Floor

THE NEW BRUNSWICK ROYAL ART UNION. Incorporated by the Legislature, is organized to promote a wider interest in Art Education. The Gallery exhibits over 200 Paintings by Celebrated Artists, Open free to the Public on Monday, Wednesday & Friday afternoons. Tickets can be obtained at the Gallery Office 140 & 142 Prince William St or by Mail. Enclose stamp for return Postage.

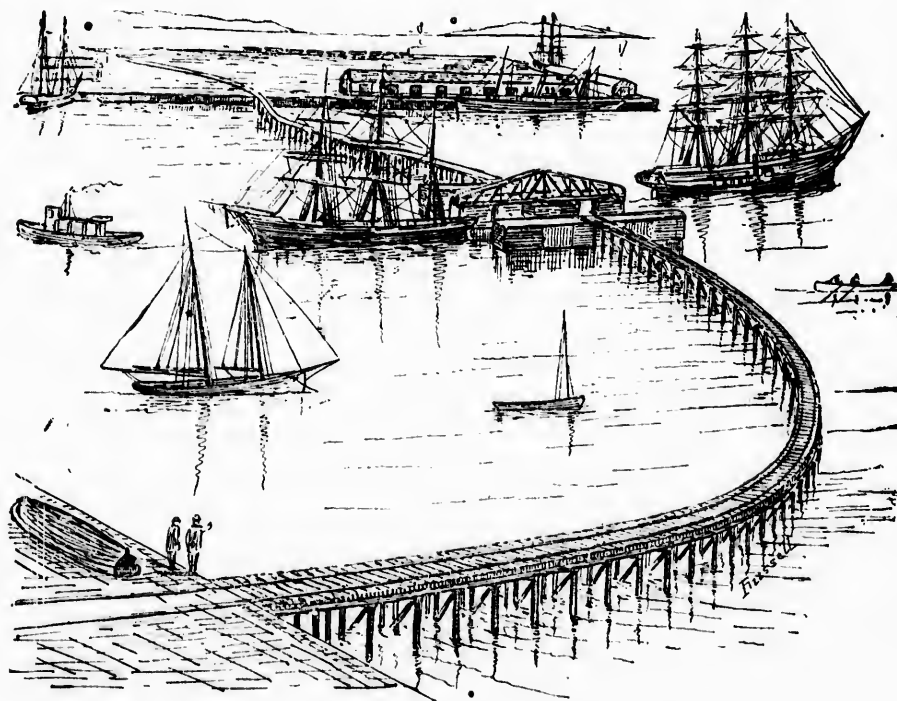




THE LATE JAMES HUMPHREY.



THE LATE EX-ALDERMAN T. NISBET ROBERTSON.



NEW HARBOR EXTENSION OF INTERCOLONIAL R. R.



WARRANTED  
THE BEST

SOAP  
FOR GENERAL  
HOUSEHOLD  
PURPOSES  
IN THE MARKET.



THE

DRY  
TRY IT.

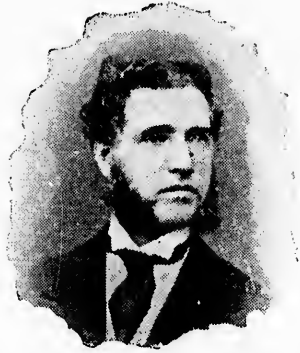
MANUFACTURED

BY



ST JOHN. N. B.

ALL GROCERS SELL IT.



His Honor the late B. F. PETERS



The late JOHN LIVINGSTONE,  
Founder of St. John "Telegraph."



The late CHAS. E. FAIRWEATHER.



The late ERNEST RUEL.



The late GEO. Y. CRUIKSHANK.



The late W. STARKEY.



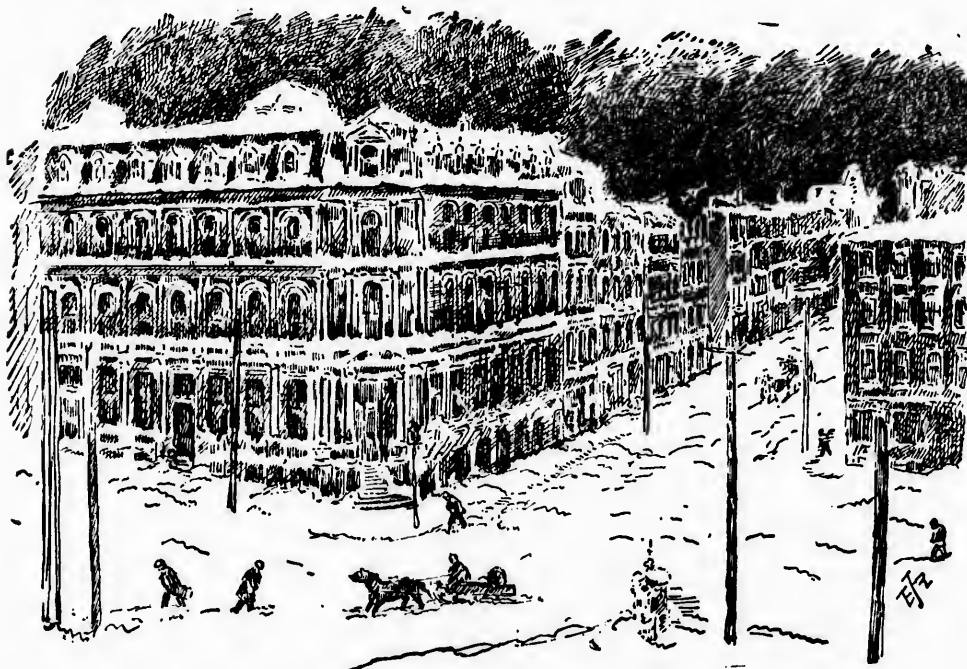
HIS LORDSHIP BISHOP SWEENEY



HIS WORSHIP MAYOR ROBERTSON.



THE GREAT APRIL SNOW STORM (North Side Market Square).

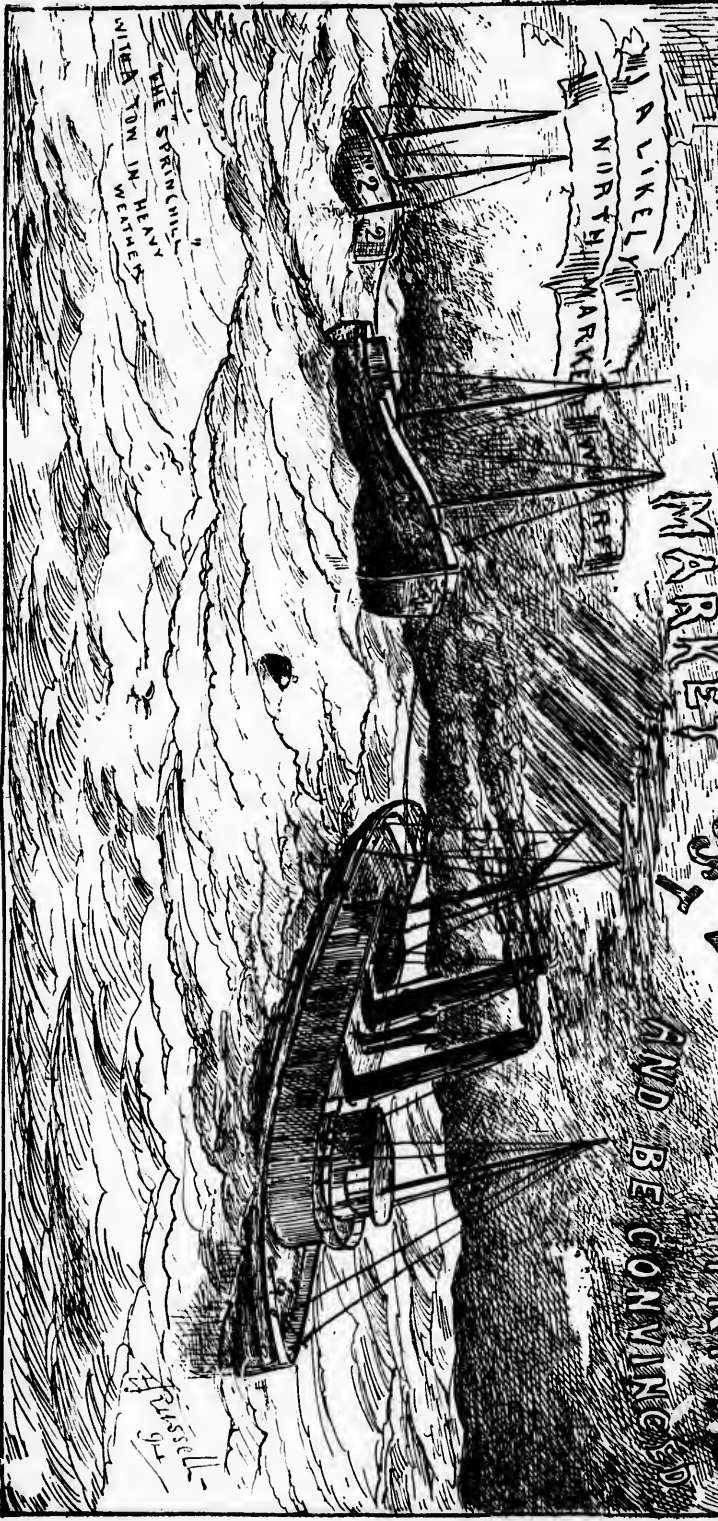


THE GREAT APRIL SNOW STORM (South East Corner Market Square).

# SPRINGHILL COAL

THE CLEANEST AND MOST ECONOMICAL COAL

IN THE MARKET MOST ECONOMICAL  
LADIES TRY IT  
AND BE CONVINCED



W. Russell  
1874





JOHN MOWRY.

PORTRAITS OF CITIZENS

LOST



JUSTUS MOWRY.

Always . . .

BUY THE

“Telegraph”

When there is an important happening. It gives the most complete report. . . .

ALL THE PLATES AND CUTS

used in the SOUVENIR, were made by the TELEGRAPH ILLUSTRATING BUREAU, St. John, N. B.



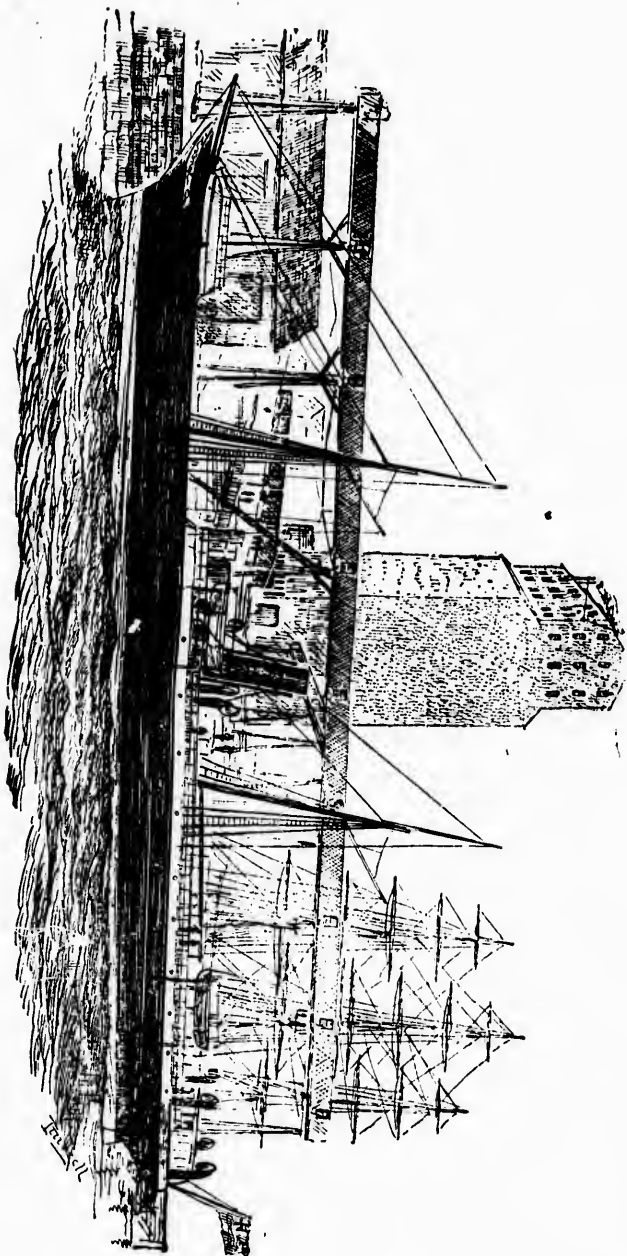
CAPT. PITMAN.

IN THE  
ST. MARTIN'S DISASTER.

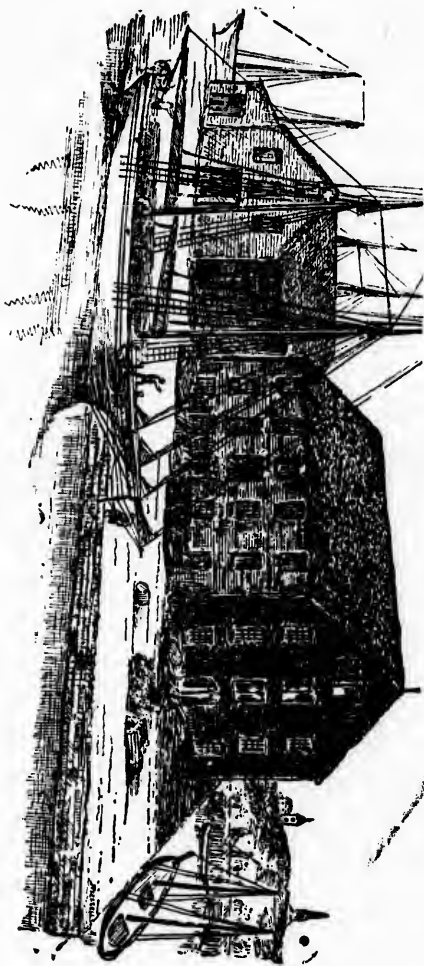


HERBERT MOWRY.

"CITY OF LINCOLN," RECEIVING HER FIRST CARGO FROM ELEVATOR.



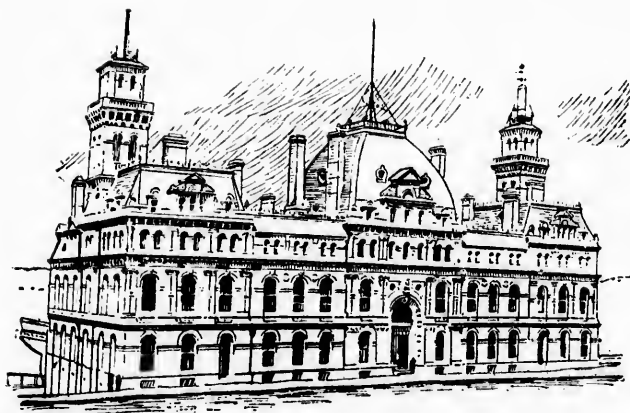
OLD WAREHOUSES, RANNEY'S WHARF.



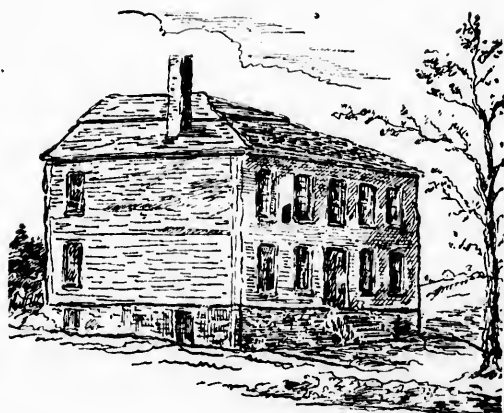




THE MARKET SQUARE FIRE



THE NEW CUSTOM HOUSE.



THE OLD CRUIKSHANK RESIDENCE.

Built in 1784. Razed in 1894.

NEW YORK

BROOKLYN

HAWKERS TONIC

HAWKERS CURE

# HAWKERS MEDICINE

HOPE  
WELL HEALING HEALTH  
ON THEIR WINGS  
HAWKERS TONIC



HAWKERS  
LIVER  
PILLS

## FOR ALL NATIONS

HAWKERS TONIC

HAWKERS TONIC

CAIRO

HAWKERS TONIC



TOLU

W. H. RUSSELL

