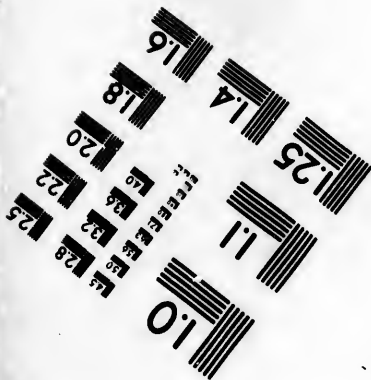
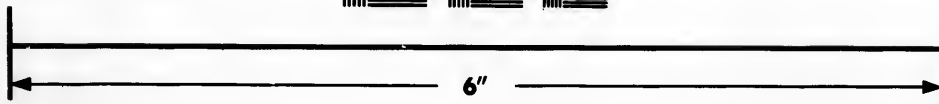
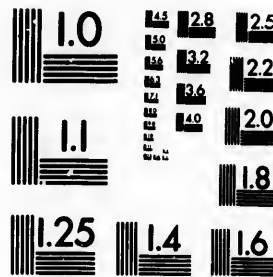


**IMAGE EVALUATION
TEST TARGET (MT-3)**



**Photographic
Sciences
Corporation**

23 WEST MAIN STREET
WEBSTER, N.Y. 14580
(716) 872-4503

128
125
122
120
118

**CIHM/ICMH
Microfiche
Series.**

**CIHM/ICMH
Collection de
microfiches.**



Canadian Institute for Historical Microreproductions / Institut canadien de microreproductions historiques

11
01

© 1984

Technical and Bibliographic Notes/Notes techniques et bibliographiques

The Institute has attempted to obtain the best original copy available for filming. Features of this copy which may be bibliographically unique, which may alter any of the images in the reproduction, or which may significantly change the usual method of filming, are checked below.

L'Institut a microfilmé le meilleur exemplaire qu'il lui a été possible de se procurer. Les détails de cet exemplaire qui sont peut-être uniques du point de vue bibliographique, qui peuvent modifier une image reproduite, ou qui peuvent exiger une modification dans la méthode normale de filmage sont indiqués ci-dessous.

- Coloured covers/
Couverture de couleur
- Covers damaged/
Couverture endommagée
- Covers restored and/or laminated/
Couverture restaurée et/ou pelliculée
- Cover title missing/
Le titre de couverture manque
- Coloured maps/
Cartes géographiques en couleur
- Coloured ink (i.e. other than blue or black)/
Encre de couleur (i.e. autre que bleue ou noire)
- Coloured plates and/or illustrations/
Planches et/ou illustrations en couleur
- Bound with other material/
Relié avec d'autres documents
- Tight binding may cause shadows or distortion along interior margin/
La reliure serrée peut causer de l'ombre ou de la distortion le long de la marge intérieure
- Blank leaves added during restoration may appear within the text. Whenever possible, these have been omitted from filming/
Il se peut que certaines pages blanches ajoutées lors d'une restauration apparaissent dans le texte, mais, lorsque cela était possible, ces pages n'ont pas été filmées.
- Additional comments:/
Commentaires supplémentaires:

- Coloured pages/
Pages de couleur
- Pages damaged/
Pages endommagées
- Pages restored and/or laminated/
Pages restaurées et/ou pelliculées
- Pages discoloured, stained or foxed/
Pages décolorées, tachetées ou piquées
- Pages detached/
Pages détachées
- Showthrough/
Transparence
- Quality of print varies/
Qualité inégale de l'impression
- Includes supplementary material/
Comprend du matériel supplémentaire
- Only edition available/
Seule édition disponible
- Pages wholly or partially obscured by errata slips, tissues, etc., have been refilmed to ensure the best possible image/
Les pages totalement ou partiellement obscurcies par un feuillet d'errata, une pelure, etc., ont été filmées à nouveau de façon à obtenir la meilleure image possible.

This item is filmed at the reduction ratio checked below/
Ce document est filmé au taux de réduction indiqué ci-dessous.

10X	12X	14X	16X	18X	20X	22X	24X	26X	28X	30X	32X
<input type="checkbox"/>	<input type="checkbox"/>	<input type="checkbox"/>	<input type="checkbox"/>	<input type="checkbox"/>	<input type="checkbox"/>	<input checked="" type="checkbox"/>	<input type="checkbox"/>	<input type="checkbox"/>	<input type="checkbox"/>	<input type="checkbox"/>	<input type="checkbox"/>

The copy filmed here has been reproduced thanks to the generosity of:

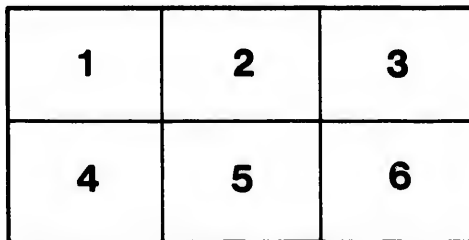
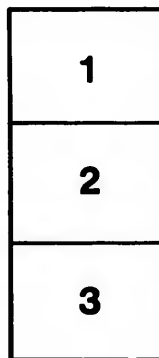
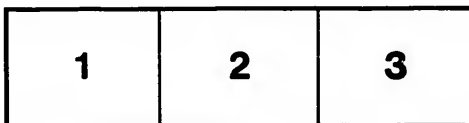
Seminary of Quebec
Library

The images appearing here are the best quality possible considering the condition and legibility of the original copy and in keeping with the filming contract specifications.

Original copies in printed paper covers are filmed beginning with the front cover and ending on the last page with a printed or illustrated impression, or the back cover when appropriate. All other original copies are filmed beginning on the first page with a printed or illustrated impression, and ending on the last page with a printed or illustrated impression.

The last recorded frame on each microfiche shall contain the symbol \rightarrow (meaning "CONTINUED"), or the symbol ∇ (meaning "END"), whichever applies.

Maps, plates, charts, etc., may be filmed at different reduction ratios. Those too large to be entirely included in one exposure are filmed beginning in the upper left hand corner, left to right and top to bottom, as many frames as required. The following diagrams illustrate the method:



L'exemplaire filmé fut reproduit grâce à la générosité de:

Séminaire de Québec
Bibliothèque

Les images suivantes ont été reproduites avec le plus grand soin, compte tenu de la condition et de la netteté de l'exemplaire filmé, et en conformité avec les conditions du contrat de filmage.

Les exemplaires originaux dont la couverture en papier est imprimée sont filmés en commençant par le premier plat et en terminant soit par la dernière page qui comporte une empreinte d'impression ou d'illustration, soit par le second plat, selon le cas. Tous les autres exemplaires originaux sont filmés en commençant par la première page qui comporte une empreinte d'impression ou d'illustration et en terminant par la dernière page qui comporte une telle empreinte.

Un des symboles suivants apparaîtra sur la dernière image de chaque microfiche, selon le cas: le symbole \rightarrow signifie "A SUIVRE", le symbole ∇ signifie "FIN".

Les cartes, planches, tableaux, etc., peuvent être filmés à des taux de réduction différents. Lorsque le document est trop grand pour être reproduit en un seul cliché, il est filmé à partir de l'angle supérieur gauche, de gauche à droite, et de haut en bas, en prenant le nombre d'images nécessaire. Les diagrammes suivants illustrent la méthode.

ire
détails
es du
modifier
er une
filmage

es

errata
to

pelure,
on à

CATALOGUE
OF THE
PROVINCIAL EXHIBITION

AT
MONTREAL,

SEPTEMBER, 1865.

*Bibliothèque
Le Séminaire de Québec,
3, rue de l'Université,
Québec 4, QUE.*



AUTHORIZED by the LOCAL COMMITTEE.

COMPILED AND PUBLISHED BY
JOHN M. GATEHOUSE,

AT THE EXHIBITION.

JOHN LOVELL, PRINTER.

PRICE, TWENTY-FIVE CENTS.

The Liverpool & London & Globe Insurance Co.

Capital, \$10,000,000 | Estimated Annual Revenue, 1865, 5,000,000
Invested Funds, 18,350,000 | Funds Invested in Canada, 300,000

HEAD OFFICES:

LIVERPOOL, - LONDON, - MONTREAL.

Insurance business in all branches transacted upon liberal terms. Particular attention is drawn to the moderate charges on farm properties. Life Tables adapted to the requirements of all classes of Assurers, may be had of the Company's Agents throughout Canada, or on application to

G. F. C. SMITH, Resident Secretary,
Corner of Great St. James St. and Place d'Armes, Montreal.

BONUS YEAR.

UNCONDITIONAL LIFE ASSURANCE

(CLASS B) OF THE

Life Association of Scotland.

ADVANTAGES OF SYSTEM:-

OMISSION to pay a Premium by Oversight does not affect the Assurance, and after a time, payment may be intentionally Postponed for a Year.

NO RESTRICTION is imposed as to Occupation or Residence.

NO EXTRA PREMIUMS can be payable after the Policy has been issued.

The ASSURANCE is virtually Non-Forfeitable and Unquestionable.

The varying wants of Policy-holders are met, also, by special new arrangements for securing

LARGE REDUCTION of the usual OUTLAY for a Policy, and, if desired.

INCREASE of the Sums Assured, as the duration of the Policy increases, irrespective of Bonus Additions, as well as by Bonus Additions from the Profits.

These material Improvements on the ordinary system of Life Assurance, give the Policies an *Extraordinary Value and Importance*. Premiums charged are not greater than for ordinary Policies.

Attention is particularly called to recent Act of Provincial Parliament by which Policies may be secured for Wives and Children entirely free from claims of creditors.

On 5th DECEMBER NEXT, 1865, the List will be closed for a Division of Five Years' Profits. All previous Entrants only will participate.

DIRECTORS:

David Torrance, Esq., of Messrs D. Torrance & Co. | The Hon. G. E. Cartier, M.P.P., Advocate.
G. Moffatt, Esq., of Messrs Gilchrist, Moffatt & Co. | T. Kirby, Esq., Manager Commer'l Bk of Canada
Alex. Morris, Esq., M.P.P., Barrister, Perth. | Peter Redpath, Esq., of Messrs J. Redpath & Son

Medical Officer: R. PALMER HOWARD, Esq., M.D.

MONTREAL, PLACE D'ARMES,

P. WARDLAW, Secretary.

C. W. WILLIAMS & CO.,

MANUFACTURERS OF

SEWING MACHINES

For Family and Manufacturing purposes.

We would respectfully inform the public that we are building, in addition to the several kinds of our own invention, FOUR of the most popular and useful SEWING MACHINES yet known. All of which we SELL at Low Prices, and keep them in order one year free of charge.

Send for a circular, or call and examine them at our

SALES ROOMS: 65 GREAT ST. JAMES STREET,
MONTREAL.

CATALOGUE
OF THE
Agricultural and Industrial Exhibition
AT THE
CITY OF MONTREAL,
ON
TUESDAY, WEDNESDAY, THURSDAY, & FRIDAY,
26TH, 27TH, 28TH, AND 29TH SEPTEMBER, 1865,
IN THE
EXHIBITION BUILDING,
ST. CATHERINE STREET,
AND UPON THE GROUNDS KNOWN AS
THE PRIEST'S FARM,
FRONTING ON
GUY AND ST. CATHERINE STREETS.

OPEN TO ALL THE PROVINCE.

PUBLISHED BY JOHN M. GATEHOUSE, AT THE EXHIBITION, AUTHORIZED
LOCAL COMMITTEE.

Montreal:
PRINTED BY JOHN LOVELL, ST. NICHOLAS STREET.

BIBLIOTHEQUE

— DE —

M. L'ABBÉ VERREAU

No.

Classe.....

Division *Agriculture*

Série *N^o 45*

*Détaché P. M. L'abbé Verreau
à l'usage de la Bibliothèque
de la Société d'Agriculture
de la Ville de Montréal*

Provincial Agricultural Association.

OFFICERS FOR 1865.

PRESIDENT.....O. DUVAL, THREE RIVERS.
FIRST VICE-PRESIDENT.....W. BOA, ST. LAURENT.
SECOND VICE-PRESIDENT.....A. C. FORTIER, BELLECHASSE.

SECRETARIES.

G. LECLERE, MONTREAL,
Secretary of the Board of Agriculture.

A. MURRAY, MONTREAL,
Secretary of the Board of Arts and Manufactures.

Board of Agriculture for Lower Canada.

MAJ. T. E. CAMPBELL, St. Hilaire, <i>President.</i>	HON. L. V. SICOTTE, St. Hyacinthe.
DR. J. O. BEAUBIEN, Montmagny, <i>Vice-President.</i>	J. C. TACHE, Esq., Quebec.
THE HON. THE MINISTER OF AGRICULTURE.	HON. U. TESSIER, Quebec.
HON. U. ARCHAMBAULT, l'Assomption.	REV. J. LANGEVIN, Quebec, Professor of Agriculture.
HON. P. CHAUVEAU, Sup. of Education.	REV. F. PILOTE, St. Anne, Professor of Agriculture.
B. POMROY, Esq., Compton.	G. LECLERE, Esq., M.D., <i>Secretary and Treasurer.</i>

Board of Arts and Manufactures for L. C.

B. CHAMBERLIN, <i>President.</i>	A. MURRAY, <i>Secretary.</i>
H. BULMER, <i>Vice-President.</i>	N. B. CORSE, <i>Treasurer.</i>

Sub-Committee.

D. BROWN.	W. REID.
A. RAMSAY.	G. W. WEAVER.
W. RODDEN.	J. W. DAWSON, LL.D., Principal McGill College.
DUNBAR BROWNE.	

Local Committee.

HIS WORSHIP THE MAYOR.

GEORGE W. WEAVER, Esq., *Chairman.*

Agricultural Department.

J. LANOUILLE, *Chairman.*
H. BRODIE.
J. PERRAULT, M.P.P.
L. J. B. BEAUBIEN.
J. SMITH, N.P., Montreal.
J. SMITH, President of the Jacques Cartier Agricultural Society.

Industrial Department.

DAVID BROWN, *Chairman.*
A. A. STEVENSON.
D. PELLETIER.
N. VALOIS.
B. CHAMBERLIN.
H. BUTNER.
A. MURRAY.

LOWER CANADA AGRICULTURIST—J. PERRAULT, *Editor.*

Official Journal of the Board of Agriculture.

PROGRAMME FOR THE WEEK.

Monday, Sept. 25th,

Will be devoted to the receiving of articles for exhibition, and their proper arrangement.

Tuesday, Sept. 26th,

The Judges will meet in the Committee Room at 10 a.m., and will commence their duties as soon as possible afterwards. As soon as they have made their awards, they will report to the Secretary. Admission, 50c.

Wednesday, Sept. 27th,

The Judges of the various Classes will complete their awards, and will place all the Prize Tickets if possible. Admission, 25c.

Thursday, Sept. 28th,

The Public will be admitted this day on payment of 25 cents by each person, each time of entering.

Friday, Sept. 29th,

The Annual Meeting of the Directors of the Association will take place at 10 a.m., in the Committee Room.

Saturday, Sept. 30th,

The Treasurer will commence paying the Premiums at 9 a.m.

All Protests must be sent to the Secretary before 10 a.m. on Thursday, the 28th September.

BANDS OF MUSIC

Will perform at the Exhibition Grounds, on the Afternoons of Wednesday and Thursday.

MEDALS.

In all cases, the winner of a first prize of \$40 in the Agricultural Department will be entitled to the Association's Gold Medal, value \$40, instead, if he prefer it; and the winner of a first prize of \$20, or upwards, will be entitled to the Silver Medal, at \$10, if he prefer it, with the difference in money; and winners of first prizes of \$5 or upwards, in the Industrial Department, may receive, in place of money, Prize Medals, at their option.

The Judges will wear *white* rosettes; the members of the Local Committee, *white and blue*; the officers and members of the Agricultural Association, of the Board of Agriculture, and of the Board of Arts, *red, white, and blue*.

All Animals taking prizes will be distinguished by ribbons of the following colors:—First Prize, *red*; Second Prize, *blue*; Third Prize, *white*; Fourth Prize, *yellow*.

CLASSIFICATION OF THE EXHIBITION.

INDUSTRIAL DEPARTMENT.

- CLASS I.**—Sections 1 to 16—Horses.
- CLASS II.**—Sections 1 to 65—Horned Cattle.
- CLASS III.**—Sections 1 to 38—Sheep.
- CLASS IV.**—Sections 1 to 24—Swine.
- CLASS V.**—Sections 1 to 32—Poultry, &c.
- CLASS VI.**—Sections 1 to 30—Agricultural Productions, embracing Grains, Seeds, &c.
- CLASS VII.**—Sections 1 to 26—Roots and other Field Crops.
- CLASS VIII.**—Sections 1 to 8—Dairy Products, &c.
- CLASS IX.**—Sections 1 to 48—Agricultural Implements; embracing Implements for the Pulverization of the Soil, for Cleansing the Soil, for Harvesting, for the preparation of Agricultural Products, and other Implements not mentioned.
- CLASS X.**—Stallions, pure Canadian breed.

AGRICULTURAL DEPARTMENT.

- CLASS I.**—Raw Products, and Objects of Natural History.
- CLASS II.**—Manufactures of Wood, including Wood and Metal, except Material prepared for Builders.
- CLASS III.**—Manufactures of Metals, including Machinery.
- CLASS IV.**—Building Material prepared, Pottery, Tile, &c.
- CLASS V.**—Chemical Products, and Manufacture from Animal and Vegetable Substances used for Food.
- CLASS VI.**—Textile Manufactures, and Manufactures from Animal and Vegetable Substances not used as Food.
- CLASS VII.**—Fine Arts, Photography, and Manufactures for Decorative purposes.
- CLASS VIII.**—Ladies' Work and Domestic Manufactures.
- CLASS IX.**—Miscellaneous, including Indian Work, Musical Instruments, Books, Bookbinding, and Printing.

AGRICULTURAL DEPARTMENT.

HORSES.

1	Thoroughbred Stallion.	W. Bennett, Montreal.
2	Do do	J. S. Brigham, Phillipsburg.
3	Do do	H. Brodie, Montreal.
4	Do do	O. Arkland, Oshawa.
5	Do do	S. Beaty, Markham.
5½	Do do	City of Quebec Agricultural Society.
6	Three-year-old Stallion.	S. Beaty, Markham.
7	Heavy Draught Horse.	X. Lacroix, St. Scholastique.
8	Do do	C. Crawford, Petite Côte.
9	Do do	P. U. Archambault, L'Assomption.
10	Do do	E. H. Bisson, St. Louis de Gonzague.
11	Do do	H. McDonald, Lower Lachine.
12	Do do	City of Quebec Agricultural Society.
13	Do do	J. Logan, Montreal.
14	Do do	E. Sadler, Ormstown.
15	Do do	H. Higgins, Mile End.
16	Do do	S. Johnson, Montreal.
17	Do do	S. Beaty, Markham.
18	Do do	C. Pierce, Stanstead.
19	Do do	D. Wing, St. Luc.
20	Light Draught Horse.	W. Lawson, St. Constant.
21	Do do	J. Monteith, Rivière St. Pierre.
22	Do do	R. Kimpton, South Roxton.
23	Do do	L. McLelland, Lacolle.
24	Do do	J. Sheehan, Montreal.
25	Do do	E. J. Price, Quebec.
26	Do do	O. Trudeau, Longue Pointe.
27, 28	Do do	James Hughes, Côte St. Louis.
29	Do do	Thomas Harland, St. Laurent.
30	Do do	J. B. St. Aubin, St. Laurent.
31	Do do	F. Scullion, Ste. Foye.
32	Do do	W. Gordon, St. Hermas.
33	Do do	Charles Perrault, Chambly.
34	Do do	Joseph Hétu, Repentigny.
35	Do do	And. Ten Eyck, Dunham.
36	Do do	J. Drummond, Petite Côte.
37	Do do	J. F. Harvey Hatley.
38	Do do	A. Cunningham, Godmanchester.
39	Do do	J. Harkness, Sherbrooke.

40 ^o	Stallion, Canadian Breed.	F. X. Charbonneau, St. Augustin.
41	Do do	M. Vincent, St. Hubert.
42	Do do	L. Jetté, St. Paul l'Ermité.
44	Do do	H. McDonald, Lower Lachine.
45	Do do	M. Hébert, Montreal.
46	Do do	G. N. Dufresne, Pointe du Lac.
47	Do do	J. Lespérance, Longueuil.
48	Do do	L. Verdon, St. Laurent.
49	Do do	D. Larivée, Côte St. Louis.
50	Do do	N. Lyons, Shipton.
51	Do do	M. Deneau, St. Luc.
52	Do do	John Carr, Godmanchester.
53	Do do	G. Lefebvre, Lachine.
54	Do do	P. N. Lefebvre, St. Remi.
55	Do do	P. Lachance, Laprairie.
56	Do do	H. Brodie, Montreal.
57	Do do	J. F. Harvey, Hatley.
58	Do do	J. Fillon, Terrebonne.
59	Do do	L. Brouseau, St. Hubert.
60	Do do	L. Lalancet, St. Aimé.
61	Three-year-old Stallion, other Breed.	D. Benning, St. Louis de Gonzague.
62	Do do do	J. Monteith, Rivière St. Pierre.
63	Do do do	C. Robinson, Lacolle.
64	Do do do	J. Logan, Montreal.
65	Do do do	A. Galbraith, St. Clément.
66	Do do do	Pierre Robert, St. Philippe.
67	Do do do	Moise Longtin, St. Constant.
68	Do do do	J. Jackson, Cote St. Paul.
69	Do do do	C. Pleros, Stanstead.
70	Do do do	L. Drolet, Ancienne Lorette.
71	Two-year-old Stallion.	X. Laeroix, Ste. Schoiastique.
72	Do do do	T. Robinson, Mascouche.
73	Do do do	J. B. St. Aubin, St. Laurent.
74	Do do do	A. Corsoo, Ste. Julienne.
75	Do do do	M. Dubreuil, Pointe aux Trembles.
76	Do do do	E. Poulin, Ste. Marie.
77	Do do do	J. Meloche, Ste. Geneviève.
78, 79	Brood Mare and Foal, Heavy Draught.	C. Crawford, Petite Côte.
80	Do do do	H. McDonald, Lower Lachine.
81	Do do do	J. Shedden, Montreal.
82	Do do do	J. Logan, Montreal.
83	Do do do	N. Tremblay, St. Bruno.
84	Do do do	James McNey, Longue Pointe.
85	Do do do	F. Oulmet, Ste. Rose.
86	Do do do	D. Brims, Athelstane.
87	Do do do	T. Meloche, Ste. Geneviève.
88	Do do do	E. Poulin, Ste. Marie.
89	Brood Mare and Foal, Light Draught.	C. A. Globensky, St. Eustache.
90	Do do do	Thomas Robinson, Mascouche.
91, 92	Do do do	H. McDonald, Lower Lachine.
93	Do do do	J. Monteith, Rivière St. Pierre.

* NOTE.—All Entries, from 40 to 60 inclusive, are competitors for the Prince of Wales Prize of \$60, for the best Stallion of pure Canadian Breed.

HORSES.

7

94	Brood Mare and Foal, Light Draught	L. Verdon, St. Laurent.
95	Do do do	James Allen, Pointe aux Trembles.
96	Do do do	D. Laird, Laprairie.
97	Do do do	E. Roy, St. Pie.
98	Do do do	M. Raymond, Longue Pointe.
99	Do do do	James Snowdon, Cote St. Luc.
100	Do do do	A. Williams, Longueuil.
101	Do do do	W. H. Vaughan, St. Johns.
102	Do do do	J. Scott, Montreal.
103	Do do do	Jac. Leonard, Pointe aux Trembles.
104	Do do do	J. Scott, St. Michel.
105	Do do do	S. E. Molson, Petite Côte.
106	Do do do	J. P. & T. A. Dawes, Lachine
107	Do do do	J. Kimpton, Ste. Thérèse.
108	Do do do	J. Longtin, St. Constant.
109	Do do do	L. Ste. Marie, Laprairie.
110	Do do do	J. Lamothe, Montreal.
111	Do do do	F. Ouimet, Ste. Rose.
112	Do do do	H. Brodie, Montreal.
113	Do do do	W. Sangster, St. Louis de Gonzague.
114	Do do do	J. Jackson, Cote St. Paul.
115	Do do do	L. Brousseau, St. Hubert.
116	Do do do	P. A. Krans, Frelighsburg.
116½	Do do do	Felix Pepin, Côte St. Michel.
117	Three-year-old Filly.	X. Lacroix, Ste. Scholastique.
118	Do do do	C. A. Globensky, St. Eustache.
119	Do do do	D. Malr, St. Louis de Gonzague.
120	Do do do	J. Montelth, Rivière St. Pierre.
121	Do do do	L. McLelland, Lacolle.
122	Do do do	J. Buchanan, St. Michel.
123	Do do do	Geo. Kidd, Petite Cote.
124	Do do do	J. Logan, Montreal.
125	Do do do	M. Raymond, Longue Pointe.
126	Do do do	J. Scott, St. Michel.
127	Do do do	J. P. & T. A. Dawes, Lachine.
128	Do do do	Revd. L. Vanderburg, Lachute.
129	Do do do	J. B. Dagenais, Ste. Rose.
130	Do do do	J. Drummond, Petite Côte.
131	Do do do	F. X. Bruneau, St. Philippe.
132	Do do do	Jos. Bernard, St. Pie.
133	Do do do	C. McAvoy, Montreal.
134	Two-year-old Filly.	X. Lacroix, Ste. Scholastique.
135	Do do do	C. Crawford, Petite Cote.
136	Do do do	D. Malr, St. Louis de Gonzague.
137, 138	Do do do	H. McDonald, Lower Lachine.
139	Do do do	J. Logan, Montreal.
140	Do do do	J. Scott, St. Michel.
141	Do do do	J. P. & T. A. Dawes, Lachine.
143	Do do do	F. Ouimet, St. Rose.
144	Do do do	S. Johnson, Montreal.
145	Do do do	E. Poulin, Ste. Marie.
146	Do do do	P. H. Krans, Frelighsburg.
147-148	Pair Draught Horses.	C. Crawford, Petite Côte.

EXHIBITION CATALOGUE.

149-150	Pair Draught Horses.	J. Sheddon, Montreal.
151-152	Do do	do do
153-154	Do do	J. Logan, Montreal.
155-156	Do do	M. Raymond, Longue Pointe.
157-158	Do do	J. Snowdon, Côte St. Luc.
159-160	Do do	M. Deneau, St. Luc.
161-162	Do do	C. Holdsworth, Petite Cote.
163-164	Do do	P. Doré, Laprairie.
165-166	Do do	H. Brodie, Montreal.
167-168	Pair matched Carriage Horses.	G. L. Dickinson, Montreal.
169-170	Do do	Jos. Lamothe, Montreal.
171-172	Do do	Adolphe Roy, Montreal.
173	Saddle Horses.	X. Lacroix, Ste. Scholastique.
174	Do	A. Gravel, St. Martin.
175	Do	R. T. Raynes, Montreal.
176	Do	do do
177	Do	J. P. & T. A. Dawes, Lachine.
178	Do	H. Brodie, Montreal.
179	Do	R. H. Moore & Son, Moore Station.
180	Do	P. H. Krauss, Frelighsburg.
181	Do	H. D. Moore, Moore Station.
182-183	Do	C. A. M. Globensky, St. Eustache.
184 $\frac{1}{2}$	Do	Molse Vincent, St. Hubert.
184	Mare and Foal.	C. Crawford, Petite Côte.
185	Do do	J. Sheddon, Montreal,
186	Do do	E. Arkland, Oshawa.

HORNED CATTLE.

187	Durham Bull, four years old and upward.	W. Edwards, Thurso.
188	Do do	J. McLachlan, Bolton.
189	Do do	J. Snell, Edmonstown.
190	Do do	C. S. Baker, Dunham.
191	Do do	Freeman Nye, Lacolle.
192	Do do	Thos. B. Odell, Sherbrooke.
193	Do do	E. Longley, Waterloo.
194	Do do	G. Miller, Markham.
194 $\frac{1}{2}$	Do do	W. Morrice, St. Eustache.
195	Do do	C. Pierce, Stanstead.
196	Hereford Bull, four years old, and upward.	R. Kimpton, South Roxton.
197	Devon Bull, four years old, and upwards.	C. Courtice, Darlington.
198	Do do	G. Mann, Bowmanville.
199	Do do	J. Hamilton, Aylwin, Prescott, C. W.
200	Do do	E. Longley, Waterloo.
201	Ayrshire Bull, four years old, and upward.	J. Craig, Charlottenburg.
202	Do do	E. H. Besson, St. Louis de Gonzague.
203	Do do	J. Logan, Montreal.
204	Do do	A. McColl, St. Joseph du Lac.
205	Do do	W. Bennett, Montreal.
206	Do do	J. Jackson, Cote St. Paul.
207	Galloway Bull, four years old, and upwards.	J. Morris, Ste. Thérèse.
208	Do do	J. Snell, Edmonstown.

HORNED CATTLE.

9

209	Bull (Grade Cattle), four years old, and upwards.	W. Lawson, St. Constant.
210	Do do do do	F. Girouard, St. Ours.
211	Do do do do	J. McLachlan, Bolton.
212	Do do do do	J. Ouimette, Iberville.
213	Do do do do	F. Nye, Lacolle.
214	Do do do do	E. Longley, Warterloo.
215	Do do do do	J. B. Dagenais, Ste. Rose.
216	Do do do do	J. H. Cooke, Eaton.
217	Durham Bull, three years old.	W. Crawford, Quebec.
218	Do do do	J. B. Lawford, Sherbrooke.
219	Do do do	A. Ste. Marie, Laprairie.
220	Do do do	P. H. Moore and Son, Moore Station.
220½	Do do do	W. Dunn, St. Rémi.
221	Hereford Bull, three years old.	R. Kimpton, South Roxton.
223	Devon Bull, three years old.	C. Courtice, Darlington.
224	Ayrshire Bull, three years old.	C. A. M. Globensky, St. Eustache.
225	Do do	M. Vincent, St. Hubert.
226	Do do	H. McDonald, Lower Lachine.
227	Do do	J. B. St. Aubin, St. Laurent.
228	Do do	D. A. Bétanc, Ste. Rose.
229	Do do	A. West, St. Foye.
230	Do do	J. Drummond, Montreal.
231	Do do	G. Lefebvre, Lachine.
232	Do do	J. Gadebois, Terrebonne.
233	Do do	D. Drummond, Petite Côte.
234	Do do	H. Brodie, Montreal.
235	Do do	H. McGill, St. Rémi.
236	Galloway Bull, three years old.	J. Morris, St. Thérèse
237	Bull (Grade Cattle), three years old.	P. Sansfaçon, St. Rémi.
238	Do do do	N. Gravel St. Martin.
239	Do do do	J. Snowdon, Cote St. Luc.
240	Do do do	Léon Laporte, Pointe aux Trembles.
241	Do do do	F. Nye, Lacolle.
242	Do do do	J. Hamilton, Aylwin, Prescott, C. W.
243	Do do do	W. Taylor, Ste. Foye.
244	Do do do	P. H. Moore and Son, Moore Station.
245	Do do do	W. P. Krans, Frelighsburg.
246	Do do do	F. E. Wadleigh, Hatley.
253	Durham Bull, two years old.	O. Robinson, Lacolle.
254	Do do do	J. B. Lawford, Sherbrooke.
255-256-257	Hereford Bull, two years old.	R. Kimpton, South Roxton.
258	Do do do	J. H. Keep, Granby.
259-260	Devon Bull, two years old.	C. Courtice, Darlington.
261	Ayrshire Bull, two years old.	A. Somerville, Lachine.
262	Do do	Thomas Harland, St. Laurent.
263	Do do	G. West, Ste. Foye.
264	Do do	J. P. & T. A. Dawes, Lachine.
265	Bull (Grade Cattle), two years old.	J. Sangster, Ormstown,
266	Do do do	R. Standish, Rougemont.
267	Do do do	M. McNaughton, Huntingdon,
268	Do do do	A. McNaughton, Godmanchester.
269	Do do do	Léon Laporte, Pointe aux Trembles.
270	Do do do	F. Nye, Lacolle.
271	Do do do	O. Cameron, Sherbrooke.

W.

gue.

272	Bull (Grade Cattle), two years old.	A. Hamel, Ste. Foye.
273	Do do do	J. Meloche, Ste. Geneviève.
274	Do do do	F. E. Wadleigh, Hatley.
275	Durham Bull, one year old.	J. Ashworth, Quebec.
276	Do do do	D. McKinnon, Somerset.
277	Do do do	J. Miller, Pickering.
278	Do do do	C. Pierce, Stanstead.
279-280	Hereford Bull, one year old.	R. Kimpton, South Roxton.
281	Devon Bull, one year old.	C. Courtice, Darlington.
282	Do do do	H. Spencer, Whitby, C. W.
283	Ayrshire Bull, one year old.	C. A. M. Globensky, St. Eustache.
283½	Do do do	C. A. N. Globensky, St. Eustache.
284-285	Do do do	J. Logan, Montreal.
286	Do do do	F. L. Genand, St. Jacques.
287	Do do do	George Smith, Lachine.
288	Do do do	J. B. Dagenais, Ste. Rose.
289	Do do do	J. Miller, Pickering.
290	Do do do	M. Molson, Lennoxville.
290½	Do do do	Thos. Harland, St. Laurent.
291	Bull (Grade Cattle), one year old.	F. X. Charbonneau, St. Augustin.
292	Do do do	F. G. Marchand, St. Jean.
293	Do do do	G. Winterbottom, Lacolle.
294	Do do do	W. Crawford, Quebec.
295	Do do do	R. Walker, St. Joseph du Lac.
296	Do do do	F. Nye, Lacolle.
297	Do do do	J. Kimpton, Ste. Thérèse.
298	Do do do	H. O'Donnell, Gros-Pin.
299	Do do do	J. B. Dagenais, Ste. Rose.
300	Do do do	P. Bowen, Compton.
301	Do do do	J. Dobie, St. Augustin.
302	Do do do	W. Taylor, Ste. Foye.
303	Do do do	L. Brousseau, St. Hubert.
304	Do do do	Michel Fréjeau, St. Cesaire.
305	Durham Bull Calf, under one year.	J. Ashworth, Quebec.
306 to 310	Do do do	J. Snell, Edmonston.
311	Do do do	C. Robinson, Lacolle.
312-313	Do do do	J. A. Sewell, Quebec.
314-315	Do do do	Frémant Nye, Lacolle.
316	Do do do	E. Longley, Waterloo.
317	Do do do	P. H. Moore & Son, Moore Station.
318	Do do do	John Miller, Pickering.
319	Do do do	G. Miller, Markham.
319½, 319¾	Do do do	C. Pierce, Stanstead.
320-321	Hereford Bull Calf, under one year.	R. Kimpton, South Roxton.
322-325	Devon Bull Calf, under one year.	C. Courtice, Darlington.
326-327	Do do do	G. Mann, Bowmanville.
328	Do do do	T. Guy, Oshawa.
329-330	Ayrshire Bull Calf, under one year.	C. A. M. Globensky, St. Eustache.
331	Do do do	James Hughes, Côte St. Louis.
332-333	Do do do	J. Logan, Montreal.
334	Do do do	J. Parke, Ste. Marthe.
335-336	Do do do	J. P. and T. A. Dawes, Lachine.
337	Galloway Bull Calf, under one year.	J. Morris, Ste. Thérèse.
338	Bull Calf (Grade Cattle), under one year.	P. Sansfaçon, St. Bruno.

HORNED CATTLE.

11

339	Bull Calf (Grade Cattle)	under one year.	N. Gravel, St. Martin.
340	Do	do	C. Robinson, Lacolle.
341	Do	do	E. Roy, St. Pie.
342	Do	do	A. Burwash, St. André.
343	Do	do	F. Nye, Lacolle.
344	Do	do	O. Brousseau, Laprairie.
345	Do	do	A. Ste. Marie, Laprairie.
3	Do	do	E. Longley, Waterloo.
347	Do	do	O. Cameron, Sherbrooke.
348	Do	do	J. Hamilton, Ste. Thérèse.
349	Do	do	P. H. Moore and Son, Moore Station.
350	Durham Heifer Calf,	under one year.	W. Edwards, Thurso.
351	Do	do	C. S. Baker, Dunham.
352-353	Do	do	F. Nye, Lacolle.
354	Do	do	P. H. Moore & Son, Moore Station.
355	Do	do	G. Miller, Markham.
356	Do	do	F. E. Wadleigh, Hatley.
357-358	Do	do	C. Pierce, Stanstead.
359-360	Hereford Heifer Calf,	under one year.	R. Kimpton, South Roxton.
361	Do	do	Peter Bowen, Compton.
362	Devon Heifer Calf,	under one year.	C. Courtice, Darlington.
363	Do	do	G. Mann, Bowmanville.
364	Do	do	S. Toms, Whitby.
365-366	Ayrshire Heifer Calf,	under one year.	O. A. M. Globensky, St. Enstache.
367	Do	do	C. Crawford, Petite Cote.
368	Do	do	J. Hughes, Cote St. Louis.
369-370	Do	do	J. Logan, Montreal.
371	Do	do	J. Snowdon, Côte St. Luc.
372	Do	do	J. Parke, Ste. Marthe.
373	Do	do	C. Holdsworth, Petite Cote.
374	Galloway Heifer Calf,	under one year.	J. Morris, Ste. Thérèse.
375	Heifer Calf (Grade Cattle),	under one year.	J. Craig, Charlottenburgh.
376	Do	do	J. Ashworth, Quebec.
377	Do	do	C. Robinson, jr., Lacolle.
378	Do	do	C. Robinson, Lacolle.
379	Do	do	D. Larivée, Cote St. Louis.
380	Do	do	D. Laird, Laprairie.
381	Do	do	D. A. Belaire, Ste Rose.
382	Do	do	M. Raymond, Longue Pointe.
383	Do	do	J. Snowdon, Cote St. Luc.
384	Do	do	W. H. Vaughan, St. Johns.
385	Do	do	Peter Bowen, Compton.
386	Do	do	P. H. Moore & Son, Moore Station.
387	Do	do	Michel Fréjeau, St. Césaire.
388	Do	do	F. E. Wadleigh, Hatley.
389	Do	do	C. Pierce, Stanstead.
390	Do	do	F. Nye, Lacolle.
391	Do	do	A. Ste. Marie, Laprairie.
395-396	Durham Cow,	four years old, and upwards.	J. Ashworth, Quebec.
397-398	Do	do	W. Edwards, Thurso.
399	Do	do	J. Snowdon, Cote St. Luc.
400	Do	do	C. S. Baker, Dunham.
401-402-403	Do	do	F. Nye, Lacolle.
404	Do	do	E. Longley, Waterloo.

405	Durham Cow, four years old, and upwards.	P. H. Moore & Son, Moore Station.
406-407	Do do do	G. Miller, Markham.
408-409	Do do do	F. E. Wadleigh, Hatley.
410-411	Do do do	C. Pierce, Staastead.
412	Durham Cow, three years old.	C. Robinson, Lacolle.
413	Do do	J. A. Sewell, Quebec.
414-415	Do do	Freeman Nye, Lacolle.
416	Do do	E. Longley, Waterloo.
417	Do do	G. Miller, Markham.
418	Do do	H. D. Moore, Moore Station.
419-420	Do do	C. Pierce Stanstead.
421	Durham Heifer, two years old.	J. A. Sewell, Quebec.
422-423	Do do	O. S. Baker, Dunham.
424	Do do	F. Nye, Lacolle.
425-426-427	Do do do	G. Miller, Markham.
428	Do do	F. E. Wadleigh, Hatley.
429	Do do	C. Pierce, Stanstead.
430	Durham Heifer one year old.	J. Ashworth, Quebec.
431	Do do	F. Nye, Lacolle.
432	Do do	P. H. Moore & Son, Moore Station.
433	Do do	G. Miller, Markham.
434	Do do	F. E. Wadleigh, Hatley,
435-436	Hereford Cow, four years old, and upwards.	R. Kimpton, South Roxton.
437	Do do do	F. E. Wadleigh, Hatley.
438-439-440	Hereford Cow, three years old.	R. Kimpton, South Roxton.
441-442	Hereford Heifer, two years old.	R. Kimpton, South Roxton.
443	Do do	D. Laird, Laprairie.
444-445	Hereford Heifer, one year old.	R. Kimpton, South Roxton.
446	Do do	Peter Bowen, Compton.
447-448-449	Devon Cow, four years old, and upwards.	C. Courtice, Darlington.
450	Do do do	G. Mann, Bowmanville.
451	Do do do	A. Spencer, Whitby, C. W.
452	Do do do	T. Guy, Oshawa.
453	Do do do	S. Toms, Whitby.
454-455-456	Do do do	E. Longley, Waterloo.
457-458	Do do do	Daniel Brims, Athelstane.
459-462	Devon Cow, three years old.	C. Courtice, Darlington.
463	Do do	T. Guy, Oshawa.
463½	Do do	T. Guy, Oshawa.
464	Do do	S. Toms, Whitby.
465-466	Do do	E. Longley, Waterloo.
467-470	Devon Heifer, two years old.	C. Courtice, Darlington.
471	Do do	T. Guy, Oshawa.
472-473	Do do	E. Longley, Waterloo.
474	Do do	Peter Bowen, Compton.
475-476	Do do	Daniel Brims, Athelstane.
477-478	Devon Heifer, one year old.	C. Courtice, Darlington.
479-480	Do do	G. Mann, Bowmanville.
481	Do do	T. Guy, Oshawa.
482-483	Do do	S. Toms, Whitby.
484	Do do	D. Brims, Athelstane.
485-486	Ayrshire Cow, four years old and upwards.	C. A. M. Globensky, St. Eustache.
487-488-489	Do do do	G. Crawford, Petite Cote.
490	Do do do	A. Somerville, Lachine.

HORNED CATTLE.

491-492	Ayrshire Cow, four years old, and upwards.	J. Logan, Montreal.
493	Do do do	D. A. Bélaire, Ste. Rose.
494	Do do do	F. U. Genand, St. Jacques.
495	Do do do	J. Snowdon, Cote St. Luc.
496	Do do do	G. West, Ste. Foye.
497	Do do do	J. Drummond, Montreal.
498	Do do do	O. Daunais, fils, Terrebonne.
499-500	Do do do	J. P. & T. A. Dawes, Lachine.
501	Do do do	W. Kimpton, Ste. Thérèse.
502	Do do do	J. B. Dagenais, Ste. Rose.
503	Ayrshire Cow, two years old.	C. Globensky, St. Eustache.
503½	Do do	C. Globensky, St. Eustache.
504	Do do	C. Crawford, Petite Cote.
505-506	Do do	J. Logan, Montreal.
507	Do do	A. Ogilvie, Montreal.
508	Do do	T. Guy, Oshawa.
509-510	Do do	J. P. & T. A. Dawes, Lachine.
511, 511½	Ayrshire Heifer, two years old.	C. A. M. Globensky, St. Eustache.
512	Do do	C. Crawford, Petite Cote.
513-514	Do do	H. McDonald, Lower Lachine.
515-516	Do do	A. Somerville, Lachine.
517	Do do	Thomas Harland, St. Laurent.
518-519-520	Do do	J. Logan, Montreal.
521	Do do	T. Guy, Oshawa.
522-523-524	Do do	Thos. Harland, St. Laurent.
525-526-527	Do do	J. P. & T. A. Dawes, Lachine.
528	Do do	Thos. Kimpton, Ste. Thérèse.
529	Do do	W. Kimpton, do
530	Do do	J. Jackson, Cote St. Paul.
531	Do do	A. Moss, Ste. Foye.
532-533	Do do	J. Jackson, Cote St. Paul.
534	Ayrshire Heifer, one year old.	C. Globensky, St. Eustache.
535	Do do	C. Crawford, Petite Cote.
536	Do do	H. McDonald, Lower Lachine.
537	Do do	Thos. Harland, St. Laurent.
538-539-540	Do do	J. Logan Montreal.
541	Do do	J. Moffatt, Petite Cote.
542	Do do	J. Drummond, Montreal.
543-544-545	Do do	J. P. & T. A. Dawes, Lachine.
546	Do do	Frederic Kimpton, St. Thérèse.
547	Galloway Cow, four years old, and upwards.	J. Morris, Ste. Thérèse.
548	Do do do	G. Miller, Markham.
549	Galloway Cow, three years old.	J. Morris, Ste. Thérèse.
550	Galloway Heifer, two years old.	J. Morris, Ste. Thérèse.
551-552	Do do	G. Miller, Markham.
553	Galloway Heifer, one year old.	J. Morris, Ste. Thérèse.
554	Cow (Grade Cattle), four years old, and upwards.	M. Vincent, St. Hubert.
555	Do do do	C. Crawford, Petite Cote.
556-557	do do do	J. Craig, Charlottenburg.
558	Do do do	N. Gravel, St. Martin.
559	Do do do	B. A. Haskell, Waterloo.
560-561	do do do	C. Robinson, Lacolle.
562	Do do do	B. Pepin, Longue Pointe.
563	Do do do	J. Hughes, Cote St. Louis.

564	Cow (Grade Cattle), four years old, and upwards.	J. Allen, Pointe aux Trembles.
565	Do do do do	D. Laird, Laprairie.
566	Do do do do	E. Roy, St. Pie.
567	Do do do do	D. A. Bélaire, Ste. Rose.
568	Do do do do	M. Raymond, Longue Pointe.
569, 570, 571	do do do do	J. Snowdon, Cote St. Luc.
572	Do do do do	M. Raymond, fils, Long Point.
573	Do do do do	A. West, Ste. Foye.
574, 575	do do do do	R. T. Raynes, Montreal.
576	Do do do do	A. Ogilvie, do.
576½	Do do do do	J. Drummond, do.
577, 578	do do do do	Freeman Nye, Lacolle.
579, 580	do do do do	S. E. Molson, Petite Cote.
581, 582	do do do do	Chs. Daunais, fils, Terrebonne.
583	Do do do do	C. Brousseau, Laprairie.
584	Do do do do	A. Ste. Marie, do.
585	Do do do do	O. Cameron, Sherbrooke.
586	Do do do do	J. B. Dagenais, Ste. Rose.
587	Do do do do	P. Bowen, Compton.
588	Do do do do	P. Doré, Laprairie.
589	Do do do do	M. Poissart, Laprairie. [tion.
590	Do do do do	P. H. Moore & Son, Moore Sta-
591	Do do do do	Jos. Meloche, Ste. Geneviève.
592	Do do do do	G. Miller, Markham.
593, 594, 595	do do do do	F. E. Wadleigh, Hatley.
596	Do do do do	H. D. Moore, Moore Station.
596½	Do do do do	C. Pierce, Stanstead.
597	Cow (Grade Cattle), three years old.	P. Sansfaçon, St. Bruno.
598	Do do do do	B. A. Haskell, Waterloo.
599	Do do do do	G. Winterbottom, Lacolle.
600	Do do do do	C. Robinson, jun., Lacolle.
601	Do do do do	J. Allen, Pointe aux Trembles.
602	Do do do do	D. Laird, Laprairie.
603	Do do do do	J. Snowdon, Cote St. Luc.
604	Do do do do	P. Walker, St. Joseph du Lac.
605	Do do do do	R. T. Raynes, Montreal.
606, 607	do do do do	F. Nye, Lacolle.
608	Do do do do	J. Hamilton, Aylwin, Prescott, C. W.
609	Do do do do	E. Longley, Waterloo.
610	Do do do do	P. Bowen, Compton.
611	Do do do do	M. Fréjeau, Ste. Césaire.
612	Do do do do	F. E. Wadleigh, Hatley.
613, 614	do do do do	H. D. Moore, Moore Station.
615	Do do do do	H. Moss, Ste. Foye.
616	Do do do do	C. Pierce, Stanstead.
617	Heifer (Grade Cattle), two years old.	W. Lawson, St. Constant.
618	Do do do do	J. Craig, Charlottenburg.
619	Do do do do	N. Gravel, St. Martin.
620	Do do do do	C. Robinson, Lacolle.
621	Do do do do	G. Winterbottom, Lacolle.
622	Do do do do	C. Robinson, Lacolle.
623, 624	do do do do	Robt. Standish, Rougemont.
625, 626	do do do do	Richard Standish, Rougemont.
627	Do do do do	M. Raymond, fils, Longue Pointe.

628	Heifer (Grade Cattle), two years old.	Leon Laporte, Pointe aux Trembles.
629	Do do do	F. Nye, Lacolle.
630, 630½	do do do	S. E. Molson, Petite Cote.
631	Do do do	Thos. Shea, Montreal.
632,	do do do	Thos. Kingston, Ste. Thérèse.
632½, 633, 633½	do do do	A. Ste. Marie, Laprairie.
634	Do do do	J. Gadebois, Terrebonne.
635	Do do do	J. B. Dagenais, Ste. Rose.
636	Do do do	P. Bowen, Compton.
637	Do do do	J. Fillion, Terrebonne.
638	Do do do	J. Meloche, Ste. Geneviève.
639	Do do do	F. E. Wadleigh, Hatley.
640	Do do do	H. Moss, Ste. Foye.
640½	Do do do	C. Pierce, Stanstead.
641	Heifer (Grade Cattle), one year old.	C. Crawford, Petite Cote.
642	Do do do	J. Craig, Charlottenburg.
643	Do do do	B. A. Haskell, Waterloo.
644	Do do do	C. Robinson, jun., Lacolle.
645	Do do do	C. Robinson, Lacolle.
646	Do do do	Robert Standish, Rougemont.
647	Do do do	Richard Standish, Rougemont.
648	Do do do	J. Allen, Pointe aux Trembles.
649	Do do do	D. Laird, Laprairie.
650	Do do do	D. Belaire, Ste. Rose.
651	Do do do	J. Snowdon, Cote St. Luc.
652	Do do do	A. West, Ste. Foye.
653	Do do do	R. T. Raynes, Montreal.
654, 655	do do do	Léon Laporte, Pointe aux Trembles.
656	Do do do	F. Nye, Lacolle.
657	Do do do	W. Lawson, St. Constant,
658	Do do do	Thos. Kimpton, Ste. Thérèse.
659	Do do do	W. Kimpton, Ste. Thérèse.
660, 661	do do do	A. Ste. Marie, Laprairie.
662, 663	do do do	L. Ste. Marie, Laprairie.
664	Do do do	A. Hamel, Ste. Foye.
665	Do do do	J. Drummond, Petite Cote.
666	Do do do	P. H. Moore & Son, Moore Station.
667	Do do do	G. Ouellette, Terrebonne.
668	Do do do	J. Meloche, Ste. Geneviève.
669	Do do do	G. Miller, Markham.
670	Do do do	F. E. Wadleigh, Hatley.
670½	Do do do	G. Ouellette, Terrebonne.
671	Do do do	C. Pierce, Stanstead.
671½	Do do do	Moise Vincent, St. Hubert.
672	Fat Steer.	P. H. Krans, Frelighsburg.
673	Do	C. Pierce, Stanstead.
674	Fat Cow.	J. Ashworth, Quebec.
675, 675½	do do do	C. S. Baker, Dunham.
676, 677	Do do do	F. Nye, Lacolle.
678	Do do do	E. Longley, Waterloo.
679	Do do do	G. Miller, Markham.
680	Do do do	C. Pierce, Stanstead.
681, 681½	Do do do	G. Miller, Markham.

682-683	Yoke Three-year-old Steers.	P. H. Moore & Son, Moore Station
684-685	Do do	P. H. Krans, Frelighsburg.
686-687	Do do do	C. Pierce, Stanstead.
688-689	Yoke Working Oxen.	C. S. Baker, Dunham.
690-691	Do do	P. H. Krans, Frelighsburg.
692-693	Dutch Helfers.	C. Pierce, Stanstead.
694	Dutch Cow.	Do do.
695	Dutch Calf.	Do do.
696	Dutch Bull.	Do do.

SHEEP.

697	Leicester Ram, two shears, and over.	D. Benning, St. Louis de Gonzague.
698	Do do	A. Sommerville, Lachine.
699	Do do	F. Perrault, L'Assomption.
700	Do do	J. Snell, Edmonstown.
701	Do do	C. Robinson, jr., Lacolle.
702	Do do	G. Polner, Ste. Esprit.
703	Do do	Thomas Guy, Oshawa.
704	Do do	D. McKinnon, Somerset.
705-706	Do do	Geo. Smith, Lachine.
707	Do do	Chs. Daunais, fils, Terrebonne.
708	Do do	A. Ste. Marie, Laprairie.
709	Do do	E. Longley, Waterloo.
710	Do do	R. Crozier, Lachine.
711	Do do	J. B. Dagenais, Ste. Rose.
712	Do do	Daniel Brims, Athelstane.
713	Do do	A. Brousseau, Laprairie.
714	Do do	J. Miller, Pickering.
715-716	Do do	G. Miller, Markham.
716½	Do do	P. E. Roy, St. Pie.
717	Leicester Shearling Ram.	F. G. Marchand, St. Jean.
718-719	Do do	J. Snell, Edmonstown.
720	Do do	P. Robinson, Lacolle.
721	Do do	G. Winterbottom, Lacolle.
722	Do do	G. Kidd, Petite Cote.
723	Do do	L. Bisette, St. Mathias.
724	Do do	Thos. Guy, Oshawa.
725	Do do	A. Ste. Marie, Laprairie.
726	Do do	J. B. Dagenais, Ste. Rose.
727-728	Do do	J. Miller, Pickering.
729-730	Do do	G. Miller, Markham.
731	Leicester Ram Lamb.	F. G. Marchand, St. Jean.
732	Do do	P. Robinson, Lacolle.
733	Do do	G. Winterbottom, Lacolle.
734	Do do	C. Robinson, jr., Lacolle.
735	Do do	G. Kidd, Petite Cote.
736	Do do	D. Martin, Ste. Esprit.
737	Do do	S. Besette, St. Mathias.
738	Do do	Thos. Guy, Oshawa.
739	Do do	E. Roy, St. Pie.
740	Do do	D. McKinnon, Somerset.
741	Do do	Chs. Daunais, fils, Terrebonne.

742	Leicester	Ram Lamb.	A. Ste. Marie, Laprairie.
743	Do	do	J. Gadebois, Terrebonne.
744	Do	do	E. Longley, Waterloo.
745	Do	do	J. B. Dagenais, St. Rose
746	Do	do	John Miller Pickering.
747-748	Do	do	G. Miller, Markham.
749	Leicester	Ewes, two shears and over.	A. Somerville, Lachine.
750	Do	do	P. Robinson, Lacolle.
751	Do	do	G. Kidd, Petite Cote.
752	Do	do	S. Bessette, St. Mathias.
753	Do	do	Léon Laporte, Pointe aux Trembles.
754	Do	do	D. McKinnon, Somerset.
755	Do	do	Chs. Daunais, fils, Terrebonne.
756	Do	do	G. Lefebvre, Lachine.
757-758	Do	do	A. Ste. Marie, Laprairie.
759½	Do	do	E. Longley, Waterloo.
760	Do	do	J. B. Dagenais, Ste. Rose.
760½	Do	do	Joseph Poissant, St. Philippe.
761	Do	do	John Miller, Pickering.
761½	Do	do	G. Miller, Markham.
762	Do	do	F. E. Wadleigh, Hatley.
762½	Leicester	Shearling Ewes.	A. Somerville, Lachine.
763	Do	do	J. Snell, Edmonstown.
763½	Do	do	C. Robinson, jr., Lacolle.
764	Do	do	S. Bessette, St. Mathias.
764½	Do	do	Geo. Smith, Lachine.
765	Do	do	A. Ste. Marie, Laprairie.
765½	Do	do	E. Longley, Waterloo.
766	Do	do	J. B. Dagenais, Ste. Rose
767	Do	do	Joseph Poissant, Laprairie.
768	Do	do	J. Miller, Pickering.
769	Do	do	G. Miller, Markham.
770	Do	do	F. E. Wadleigh, Hatley.
770½	Leicester	Ewe Lambs.	D. Benning, St. Louis de Gonzague.
771	Do	do	C. Robinson, jr., Lacolle.
772	Do	do	G. Kidd, Petite Cote.
773	Do	do	S. Bessette, St. Mathias.
774	Do	do	Chs. Daunais, fils, Terrebonne.
775-776	Do	do	A. Ste. Marie, Laprairie.
777	Do	do	E. Longley, Waterloo.
778	Do	do	J. B. Dagenais, Ste. Rose.
779	Do	do	J. Miller, Pickering.
780	Do	do	G. Miller, Markham.
781	Do	do	G. Winterbottom, Lacolle.
781½	Do	do	P. E. Roy, St. Pie.
782	Cotswold	Ram, two shears and over.	J. Snell, Edmonstown.
783	Do	do	G. Winterbottom, Lacolle.
784	Do	do	C. Robinson, Lacolle.
785	Do	do	E. Roy, St. Pie.
786-787	Do	do	G. Miller, Markham.
788-789	Cotswold	Shearling Ram.	J. Snell, Edmonstown.
790	Do	do	G. Winterbottom, Lacolle.
791	Do	do	A. Ste. Marie, Laprairie.

792	Cotswold Shearling Ram.	G. Miller, Markham.
793	Cotswold Ram Lamb.	G. Winterbottom, Lacolle.
794	Do do	C. Robinson, Lacolle.
795	Do do	E. Longley, Waterloo.
796	Do do	G. Miller, Markham.
797	Cotswold Ewes, two shears, and over.	C. Robinson, Lacolle.
798	Do do	S. Bessette, St. Mathias.
799	Do do	E. Longley, Waterloo.
800	Do do	G. Miller, Markham.
801-802	Cotswold Shearling Ewes.	A. Ste. Marie, Laprairie.
803-804	Do do	E. Longley, Waterloo.
805	Do do	G. Miller, Markham.
806	Do do	F. E. Wadleigh, Hatley.
807	Cotswold Ewe Lambs.	C. Robinson, Lacolle.
808-809	Do do	E. Longley, Waterloo.
810	Do do	G. Miller, Markham.
811	Do do	G. Winterbottom, Lacolle.
812	Long-Wool Ram, two shears and over.	F. Pepin, Cote St. Michel.
813	Do do do	J. Snell, Edmonstown.
814	Do do do	P. Robinson, Lacolle.
815	Do do do	A. Williams, Longueuil.
816	Do do do	D. Martin, St. Esprit.
817	Do do do	G. Poirier, do
818	Do do do	J. Scott, Montreal.
819	Do do do	Thomas Guy, Oshawa.
820	Do do do	J. B. Dagenais, Ste. Rose.
821	Do do do	J. Poissant, Laprairie.
822	Do do do	M. Bruneau, St. Constant.
823	Do do do	J. Miller, Pickering.
824-825	Do do do	G. Miller, Markham.
826	Do do do	Charles Daunais, fils, Terrebonne.
827-828	Long-Wool Shearling Ram	J. Snell, Edmonstown.
829	Do do	C. Robinson, jr., Lacolle.
830	Do do	D. Martin, St. Esprit.
831	Do do	J. Scott, Montreal.
832	Do do	Thomas Guy, Oshawa.
833	Do do	J. B. Dagenais, Ste. Rose.
834-835	Do do	John Miller, Pickering.
836	Do do	G. Miller, Markham.
837	Do do	F. E. Wadleigh, Hatley.
838	Do do	N. Grenier, St. Grégoire.
839	Do do	S. Bessette, St. Mathias.
840	Long-Wool Ram Lamb.	Joseph Craig, Charlottenburgh, C. W.
841	Do do	C. Robinson, jr., Lacolle.
842	Do do	D. Laird, Laprairie.
843	Do do	E. Roy, Ste. Pie.
844	Do do	A. West, Ste. Foye.
845	Do do	A. Williams, Longueuil.
846	Do do	D. Martin, St. Esprit.
847	Do do	Thomas Guy, Oshawa.
848	Do do	E. Longley, Waterloo.
849	Do do	J. B. Dagenais, Ste. Rose.
850	Do do	J. Poissant, Laprairie.

851	Long-Wool Ram Lamb.	G. Ouellette, Terrebonne.
852	Do do	L. Brousseau, St. Hubert.
853	Do do	J. Miller, Pickering.
854	Do do	G. Miller, Markham.
855	Do do	N. Grenier, St. Grégoire.
856	Do do	S. Bessette, St. Mathias.
857	Do do	J. Gadebols, Terrebonne.
858	Do do	G. Ouellette, do
859	Long-Wool Ewes, two shears and over.	Jas. Craig, Charlottenburg.
860	Do do	F. Pepin, Côte St. Michel.
861	Do do	J. Snell, Edmonstown.
862	Do do	P. Robinson, Lacolle.
863	Do do	G. Winterbottom, Lacolle.
864	Do do	C. Robinson, Jr., do
865	Do do	C. Robinson, do
866	Do do	D. Martin, St. Esprit.
867	Do do	S. Bessette, St. Mathias.
868	Do do	J. Gadebols, Terrebonne.
869	Do do	J. B. Dagenais, Ste. Rose.
870	Do do	Joseph Poissant, Laprairie.
871	Do do	L. Brousseau, St. Hubert.
872	Do do	J. Miller, Pickering.
873	Do do	G. Miller, Markham.
874	Do do	F. E. Wadleigh, Hatley.
875	Do do	N. Grenier, St. Grégoire.
876	Long-Wool Shearling Ewes.	Jas. Craig, Charlottenburg, C. W.
877	Do do	G. Winterbottom, Lacolle.
878	Do do	C. Robinson, Lacolle.
879	Do do	E. Roy, St. Pie.
880	Do do	S. Bessette, S. Mathias.
881	Do do	J. Gadebols, Terrebonne.
882	Do do	J. B. Dagenais, Ste. Rose.
883	Do do	J. Poissant, Laprairie.
884	Do do	J. Miller, Pickering.
885	Do do	G. Miller, Markham.
886	Do do	F. E. Wadleigh, Hatley.
887	Do do	N. Grenier, St. Grégoire.
888	Long-Wool Ewe Lambs.	Toussaint Verdon, St. Laurent.
889	Do do	Jas. Craig, Charlottenburgh, C. W.
890	Do do	F. Pepin, Côte St. Michel.
891	Do do	D. Laird, Laprairie.
892	Do do	E. Roy, St. Pie.
893	Do do	A. West, Ste. Foye.
894	Do do	A. Williams, Longueuil.
895	Do do	D. Martin, St. Esprit.
896	Do do	G. Poirier, St. Esprit.
897	Do do	E. Longley, Waterloo.
898	Do do	J. B. Dagenais, Ste. Rose.
899	Do do	P. Doré, Laprairie.
900	Do do	Joseph Poissant, Laprairie.
901	Do do	L. Brousseau, St. Hubert.
902	Do do	J. Miller, Pickering.
903	Do do	G. Miller, Markham.

904	Long-Wool Ewe Lambs.	F. E. Wadleigh, Hatley.
950	Do do	N. Grenier, St. Grégoire.
900	Do do	G. Winterbottom, Lacolle.
907	Do do	S. Bessette, St. Mathias.
908	South-Down Ram, two shears and over.	F. Walker, Chambly.
909, 910	Do do	H. Spencer, Whitby, C. W.
911	Do do	Samuel Toms, Whitby.
912	Do do	G. Miller, Markham.
913	Do do	A. Stevens, Ascot.
914, 915	Do do	C. Pierce, Stanstead.
916, 917	South-Down, Shearling Ram.	H. Spencer, Whitby, C. W.
918	Do do	Samuel Toms, Whitby, C. W.
919, 920, 921	Do do	G. Miller, Markham.
922	Do do	C. Pierce, Stanstead.
923	South-Down Ram Lamb.	F. Walker, Chambly.
924, 925	Do do	H. Spencer, Whitby, C. W.
926	Do do	Samuel Toms, Whitby, C. W.
927, 928	Do do	G. Miller, Markham.
929	Do do	C. Pierce, Stanstead.
930	South-Down Ewes, two shears and over.	F. Walker, Chambly.
931, 932	Do do	H. Spencer, Whitby, C. W.
933, 934	Do do	Samuel Toms, Whitby, C. W.
935, 936	Do do	E. Longley, Waterloo.
937, 938	Do do	G. Miller, Markham.
939	Do do	C. Pierce, Stanstead.
939½, 940	South-Down Shearling Ewes.	H. Spencer, Whitby, C. W.
941	Do do	Samuel Toms, Whitby, C. W.
942, 943	Do do	E. Longley, Waterloo.
944	Do do	G. Miller, Markham.
945	Do do	C. Pierce, Stanstead.
946	South-Down Ewe Lamba.	F. Walker, Chambly.
947, 948	Do do	H. Spencer, Whitby, C. W.
949	Do do	Samuel Toms, Whitby, C. W.
950, 951	Do do	G. Miller, Markham.
952	Do do	C. Pierce, Stanstead.
953	Cheviot Ram, two shears, and over.	Thos. Guy, Oshawa.
954, 954½, 955, 955½, 956, 956½	Do do	D. Elliot, Grafton.
957	Do do	E. Longley, Waterloo.
958	Cheviot Shearling Ram.	Thos. Guy, Oshawa.
959, 960, 961	Do do	D. Elliot, Grafton.
962	Do do	Etienne Poulin, Ste. Marie.
963	Cheviot Ram Lamb.	Thos. Guy, Oshawa.
964	Do do	D. Elliot, Grafton.
965	Do do	E. Longley, Waterloo.
966	Do do	J. B. Dagenais, Ste. Rose.
967	Do do	E. Poulin, Ste. Marie.
966½	Do do	F. E. Wadleigh, Hatley.
968	Cheviot Ewes, two shears, and over.	Thos. Guy, Oshawa.
969, 970	Do do	D. Elliot, Grafton.
971	Do do	E. Longley, Waterloo.
972	Do do	F. E. Wadleigh, Hatley.
973	Cheviot Shearling Ewes.	Thos. Guy, Oshawa.
974-975-976	do do	D. Elliott, Grafton.
977	Do do	E. Longley, Waterloo.

SHEEP.

21

977	Cheviot Shearling Ewes.	D. Elliot, Grafton.
978	Cheviot Ewe Lambs.	Thos. Guy, Oshawa.
979	Do do	D. Elliot, Grafton.
980	Do do	E. Longley, Waterloo.
981	Do do	E. Poulin, St. Made
982	Do do	D. Elliot, Grafton.
983	Ram (Merinos and Saxons), two shears, and over.	C. S. Baker, Dunham.
984	Do do	do D. Martin, St. Esprit.
985	Do do	do F. Lecavallier, St. Laurent.
986	Do do	do E. Longley, Waterloo. (Station)
987	Do do	do Hon. P. H. Moore & Son, Moore
988	Do do	do H. D. Moore, Moore Station.
989, 990	do do	do C. Pierce, Stanstead.
991	Shearling Ram (M. and S.)	E. Longley, Waterloo.
992	Do do	do P. H. Moore & Son, Moore Station.
993	Do do	do H. D. Moore, Moore Station.
994	Do do	do C. Pierce, Stanstead.
995	Ram Lamb (M. and S.)	A. West, St. Foye.
996	Do do	do C. S. Baker, Dunham.
997	Do do	do D. Martin, St. Esprit.
998	Do do	do E. Longley, Waterloo.
999, 1000	do do	do C. Pierce, Stanstead.
1001	Ewes (M. and S.), two shears and over.	C. S. Baker, Dunham.
1002	Do do	do D. Martin, St. Esprit.
1003, 1004	do do	do E. Longley, Waterloo.
1005	Do do	do P. H. Moore & Son, Moore Station
1006	Do do	do H. D. Moore, do
1007	Do do	do C. Pierce Stanstead.
1008	Shearling Ewes (M. and S.)	C. S. Baker, Dunham.
1009, 1010	Do do	do E. Longley, Waterloo.
1011	Do do	do P. H. Moore & Son, Moore Station.
1012	Do do	do H. D. Moore, do
1013	Do do	do C. Pierce, Stanstead.
1014	Ewe Lambs (M. and S.)	A. West, St. Foy.
1015	Do do	do C. S. Baker, Dunham.
1016	Do do	do E. Longley, Waterloo.
1017	Do do	do C. Pierce, Stanstead.
1018	Two Wethers (Fat Sheep).	D. Laird, Laprairie.
1019	Do do	do J. Scott, Montreal.
1020	Do do	do E. Longley, Waterloo.
1021	Two Ewes (Fat Sheep).	J. Scott, Montreal.
1022	Do do	do Geo. Smith, Lachine.
1023	Hampshire-Down Ewes.	J. Ashworth, Quebec.
1024	Do Shearling Ewes.	Do do
1025	Do Ewe Lambs.	Do do
1026	Do Ram Lambs.	Do do
1026½	Do Shearling Ewes.	M. Raymond, Longue Pointe.

SWINE.

1027	Yorkshire Boar (Large Breed),	one year, and over.	J. Logan, Montreal.
1028	Yorkshire Boar (Large Breed),	do	G. West, Ste. Foye.
1029	Do	do	under one year. J. Logan, Montreal.
1030	Do	do	do J. Leimer, Montreal.
1031	Do	do	do J. Scott, Montreal.
1031½	Do	do	do J. Nicholson, Montreal.
1032	Yorkshire Breeding Sow (Large Breed),	one year, and over.	F. X. Charbonneau, [St. Augustin.]
1033, 1034	Do	do	do J. Logan, Montreal.
1035	Do	do	do W. H. Vaughan, St. Johns.
1036	Yorkshire Sow (Large Breed),	under one year.	J. Logan, Montreal,
1037	Do	do	do W. H. Vaughan, St. Johns.
1038	Do	do	do J. Moffatt, Petite Cote.
1039	Do	do	do J. Leimer, Montreal.
1040	Do	do	do J. Scott, Montreal.
1041	Do	do	do J. F. Armand, [Riv. des Prairies.]
1041½	Do	do	do J. Nicholson, Montreal.
1044	Large Berkshire Boar, under one year.	J. Parke, Ste. Marthe.	
1046	Do	do	W. Bennett, do
1047	Do	do	C. A. M. Globensky, St. Eustache.
1048	Large Berkshire Breeding Sow, one year and over.	C. Crawford, Petite Cote.	
1049	Do	do	do C. Pierce, Stanstead.
1051	Large Berkshire Sow, under one year.	C. Crawford, Petite Cote.	
1052	Do	do	do J. Parke, Ste. Marthe.
1053	Do	do	do C. A. M. Globensky, St. Eustache.
1054	Large-Breed Boar, one year and over.	F. X. Charbonneau, St. Augustin.	
1055-1055½	Do	do	do P. N. Archambault, L'Assomption.
1056	Do	do	do J. Jackson, Cote St. Paul.
1057	Do	do	do J. Reinhardt, Montreal.
1058	Do	do	do H. McGaffee, Stanstead.
1059	Do	do	do H. Moss, St. Foy.
1060	Do	do	do J. F. Armand, Rivière des Prairies.
1061-1062	Large-Breed Boar, under one year.	C. A. M. Globensky, St. Eustache.	
1063	Do	do	do J. Logan, Montreal.
1064	Do	do	do M. Raymond, Long Point.
1065	Do	do	do J. Parke, Ste. Marthe.
1066	Do	do	do L. Laporte, Pointe aux Trembles.
1067	Do	do	do W. Bennett, Montreal.
1068	Do	do	do E. Bouchard, Laprairie.
1069	Do	do	do M. Brunenau, St. Constant.
1070	Do	do	do H. Moss, St. Foy. [St. Eustache.]
1071	Large-Breed Breeding Sow, one year, and over.	C. A. M. Globensky,	
1072	Do	do	do P. U. Archambault, L'Assomption.
1073	Do	do	do J. Craig, Charlottenburgh,
1074	Large-Breed Sow, under one year.	F. X. Charbonneau, St. Augustin. [C. W.]	
1075	Do	do	do C. A. Globensky, St. Eustache.
1076	Do	do	do C. Crawford, Petite Cote.
1077	Do	do	do M. Raymond, Longue Pointe.
1078	Do	do	do A. McColl, St. Jos. du Lac.

1079	Large-Breed Sow, under one year.	J. Parke, Ste. Marthe
1080	Do do do	L. Laporte, Point aux Trembles.
1081	Do do do	C. Holdsworth, Petite Cote.
1082	Do do do	E. Bouchard, Laprairie.
1083	Suffolk Boar (small breed), one year, and over.	J. P. & T. A. Dawes, Lachine.
1084	Suffolk Boar (small breed), under one year.	C. A. Globensky, St. Eustache.
1085	Do do do	J. Buchanan, St. Michel.
1086	Do do do	J. Drummond, Petite Cote.
1087	Do do do	W. Collins, St. Eustache.
1088	Suffolk Breeding Sow (small breed), one year, and over.	C. A. Globensky, St. Eustache.
1089	Do do do	J. Buchanan, St. Michel.
1090	Do do do	J. Snowdon, Cote St. Luc.
1091	Do do do	J. Logan, Montreal.
1092-1093	Do do do	J. P. & T. A. Dawes, Lachine.
1094	Do do do	J. Drummond, Petite Cote.
1095	Suffolk Sow (small breed), under one year.	C. A. Globensky, St. Eustache.
1096	Do do do	J. Buchanan, St. Michel.
1097	Do do do	D. Laird, Laprairie.
1098	Do do do	C. Holdsworth, Petite Cote.
1099	Do do do	J. Drummond, do
1100	Do do do	W. Collins, St. Eustache.
1101	Improved Berkshire Boar, one year, and over.	J. Ashworth, Quebec.
1102	Do do do	L. Verdon, St. Laurent.
1103	Do do do	Bte. Pepin, Longue Pointe.
1104, 1105	Improved Berkshire Boar, under one year.	L. Verdon, St. Laurent.
1106	Do do do	D. Laird, Laprairie.
1107	Do do do	D. A. Bélaire, Ste. Rose.
1108	Do do do	A. West, St. Foy.
1109	Do do do	J. Parke, Ste. Marthe.
1110	Do do do	F. Perrault, L'Assomption.
1111	Do do do	J. Ashworth, Quebec.
1112	Improved Berkshire Breeding Sow, one year, and over.	J. Ashworth, Quebec.
1113, 1114	Do do do do	L. Verdon, St. Laurent.
1115	Do do do	Bte. Pepin, Long Point.
1116, 1117	Improved Berkshire Sow, under one year.	L. Verdon, St. Laurent.
1118	Do do do	Bte. Pepin, Longue Pointe.
1119	Do do do	D. Laird, Laprairie.
1120	Do do do	D. A. Bélaire, Ste. Rose.
1121	Do do do	M. Raymond, fils, Longue Point.
1122	Do do do	A. West, St. Foy.
1123	Do do do	J. Parke, Ste. Marthe.
1124	Do do do	F. Perrault, L'Assomption.
1125, 1126	Do do do	J. Ashworth, Quebec.
1127	Small-Breed Boar, one year and over.	C. A. Globensky, St. Eustache.
1128	Do do do	F. G. Marchand, St. Jean.
1129	Do do do	L. Laporte, Point-aux-Trembles.
1130	Small-Breed Boar, under one year.	C. A. Globensky, St. Eustache.
1132, 1133	Do do do	F. G. Marchand, St. Jean.
1134	Do do do	N. Gravel, St. Martin.
1135	Do do do	J. Allen, Point-aux-Trembles.
1136	Do do do	W. H. Vaughan, St. Johns.

1137	Small-Breed Boar, under one year.	L. Laporte, Point-aux-Trembles.	[tin.
1138	Small-Breed Breeding Sow, one year and over.	F. X. Charbonneau, St. Auguste.	
1139, 1140	Do do do	C. Globensky, St. Eustache.	
1141	Do do do	F. G. Marchand, St. Jean.	
1142	Do do do	H. Brodie, Montreal.	
1143	Do do do	C. Pierce, Stanstead.	
1144	Small-Breed Sow, under one year.	F. G. Marchand, St. Jean.	
1145	Do do do	N. Gravel, St. Martin.	
1146	Do do do	J. Allen, Pointe-aux-Trembles.	
1147	Do do do	J. Snowdon, Cote St. Luc.	
1148	Do do do	A. West, St. Foy.	
1149	Do do do	L. Laporte, Pointe-aux-Trembles.	
1149½, 1149¾	do do do	C. A. M. Globensky, St. Eustache.	

POULTRY.

1150	Pair White Dorkings.	L. H. Batchelder, Rougemont.
1151	Do do	Geo. Smith, Lachine.
1152	Do do	Jas. Creighton, Montreal.
1153	Pair Spangled Dorkings.	C. Crawford, Petite Côte.
1154-1155	Do do	J. Logan, Montreal.
1156	Do do	Thos. Collinson, Montreal.
1157	Do do	J. Leimer, do.
1158	Do do	Hy. Smith, do.
1159	Pair Black Polands.	F. L. Génand, St. Jacques.
1160	Do do	Thos. Collinson, Montreal.
1161	Do do	P. Martin, St. Laurent.
1162	Do do	Hy. Smith, Montreal.
1163	Do do	James Creighton, Montreal.
1164	Do do	Mrs. Casey, do.
1165	Pair White Polands.	Thos. Collinson, do.
1166	Do do	Jas. Creighton, do.
1167	Pair Golden Polands.	L. Verdon, St. Laurent.
1168, 1169	Do do	Thos. Collinson, Montreal.
1170	Do do	Hy. Smith, do.
1171	Do do	D. Smith, Point St. Charles.
1172	Do do	J. Héty, Repentigny.
1172½	Do do	T. C. Tinsley, Montreal.
1173	Pair Silver Polands.	J. Prairie, Iberville.
1174	Do do	F. L. Génand, St. Jacques.
1175-1176	Do do	Thos. Collinson, Montreal.
1176½	Do do	Chas. Tinsley, Montreal.
1177	Do do	J. Leimer, do.
1178	Do do	Hy. Smith, do.
1179	Do do	Jas. Creighton, do.
1180	Pair Game Fowls.	Thos. Collinson, Montreal.
1181	Do do	Jas. Moffatt, Petite Cote.
1182	Do do	Hy. Smith, Montreal.
1183	Do do	Jas. Creighton, do.
1184	Do do	D. Smith, Point St. Charles.
1185	Pair of Jersey Blues.	Jas. Creighton, Montreal.
1186	Pair of Cochín-China, Shanghaï, &c.	T. Verdon, St. Laurent.
1187	Do do do	B. Campbell, St. Hilaire.
1188	Do do do	J. Logan, Montreal.
1189	Do do do	P. N. Archambault, L'Assomption.

1190	Pair of Cochín-China, Shanghai, &c.	L. B. Lawford, Sherbrooke.
1192-95	Do do do	F. C. Hossard, Quebec.
1196	Do do do	H. Moss, St. Foy.
1197	Do do do	W. Faris, Sorel.
1197½	Do do do	Moise Vincent, St. Hubert.
1198	Black Spanish Fowls.	C. Crawford, Petite Cote.
1199	Do do do	F. Perrault, L'Assomption.
1200	Do do do	G. Kidd, Petite Cote.
1201, 1202	Do do do	J. Logan, Montreal.
1203	Do do do	M. Raymond, Longue Pointe.
1204, 1205	Do do do	Thos. Collinson, Montreal.
1206, 1206½	Do do do	W. Boyd, do.
1207	Do do do	D. Smith, Point St. Charles.
1208	Do do do	J. Jackson, Cote St. Paul.
1109	Do do do	H. Moss, St. Foy.
1210	Black Java Fowls.	Jas. Logan, Montreal.
1211	Bolton Bays.	Thos. Collinson, Montreal.
1212, 1213	Pair Hamburg Fowls.	Thos. Collinson, Montreal.
1214	Do do do	J. Leimer, do.
1215	Do do do	Jas. Creighton, do.
1216	Dominique Fowls.	Jas Creighton, do.
1217	Feather-Legged Bantams.	N. Gravel, St. Martin.
1218	Do do do	J. Snowdon, Cote St. Luc.
1219	Do do do	Thos. Collinson, Montreal.
1220	Do do do	Hy. Smith, do.
1221	Do do do	J. Jackson, Cote St. Paul.
1222	Do do do	E. Cameron, St. Andrew.
1223	Smooth-legged Bantams.	F. Perrault, L'Assomption.
1224	Do do do	J. Snowdon, Côte St. Luc.
1225	Do do do	Thos. Collinson, Montreal.
1226	Do do do	C. Viau, Montreal.
1227, 1228	Do do do	C. T. Tinsley, Montreal.
1229	Do do do	Jas. Creighton, Montreal.
1230	Do do do	R. Brodie, Côte St. Pierre.
1231	Pair White Turkeys.	J. Ouimette, Iberville.
1232	Do do do	F. L. Génand, St. Jacques.
1233	Pair Turkeys, colored.	F. L. Génand, St. Jacques.
1234	Pair Wild Turkeys.	B. Campbell, St. Hilaire.
1236	Pair Large Geese.	James Hughes, Côte St. Louis.
1237	Do do do	F. L. Génand, St. Jacques.
1238	Do do do	A. McColl, St. Joseph du Lac.
1239	Do do do	Thos. Collinson, Montreal.
1240	Do do do	Jacques Léonard, Pointe aux Trembles.
1241	Do do do	Geo. Smith, Lachine.
1242	Do do do	C. Brousseau, Laprairie.
1243	Do do do	R. Brodie, Côte St. Pierre.
1244	Do do do	J. F. Armand, Rivière des Prairies.
1245	Do do do	Joseph Hétu, Repentigny.
1246	Do do do	J. Gadebois, Terrebonne.
1247	Do do do	D. Ryan, Côte St. Louis.
1248	Do do do	A. Hamel, St. Foy.
1249	Do do do	A. Brodie, Montreal.
1250	Do do do	M. Bruneau, St. Constant.
1251	Do do do	J. Jackson, Cote St. Paul.

1252	Pair Large Geese.	J. Shields, Lachine.
1253	Pair Bremen Geese.	J. Logan, Montreal.
1254	Do	D. Ryan, Côte St. Louis.
1255	Do	A. Hamel, St. Foy.
1255½	Do	J. F. Armand, Rivière des Prairies.
1256	Pair Chinese Geese.	J. Ouimette, Iberville.
1257	Do	J. Héту, Repentigny.
1258	Pair Muscovy Ducks.	Thos. Collinson, Montreal.
1259	Do	J. F. Armand, Rivière des Prairies.
1260	Do	Joseph Héту, Repentigny.
1261	Do	E. Bouchard, Laprairie.
1262	Pair Common Ducks.	J. Snowdon, Cote St. Luc.
1263	Do	T. Collinson, Montreal.
1264	Do	Jacques Léonard, Pointe aux Trembles.
1265	Do	C. Brousseau, Laprairie.
1266	Do	H. McDonald, Lower Lachine.
1267	Do	J. Héту, Repentigny.
1268	Do	D. Ryan, Cote St. Louis.
1269	Do	J. Jackson, Côte St. Paul.
1270	Do	R. Brodie, Côte St. Pierre.
1271	Pair Aylesbury Ducks.	C. Crawford, Petite Côte.
1272, 1273	Do	H. McDonald, Lower Lachine.
1274	Do	J. Logan, Montreal.
1275	Do	F. L. Génand, St. Jacques.
1276	Do	Thos. Collinson, Montreal.
1277	Do	H. Higgins, Mile End.
1278	Do	Jos. Lamothe, Montreal.
1279	Do	F. C. Hussard, Quebec.
1280	Pair Poland Ducks.	W. Crawford, Quebec.
1281	Do	Jas. Creighton, Montreal.
1282	Do	D. Ryan, Côte St. Louis.
1283	Pair Guinea Fowls.	W. H. Vaughan, St. Johns.
1284	Do	Jas. Creighton, Montreal.
1235	Pair of Pea Fowls.	B. Campbell, St. Hilaire.
1286	Do do	H. D. Moore, Moore Station.
1287	Collection of Pigeons.	C. T. Tinsley, Montreal.
1288	Do do	Robt. Taylor, Montreal.
1289	Do do	F. C. Hussard, Quebec.
1290	Pair of Rabbits.	J. Shields, Lachine.
1291	English Pheasants.	Thos. Collinson, Montreal.
1292	Irish Thrush.	Mde. Casey, Montreal.
1293	Yellow Dorking.	Mde. Casey, Montreal.
1294	Silver Phensants.	Mde. Casey, Montreal.
1294½	Grey Dorkings.	Jas. Logan, Montreal.

GRAINS AND SEEDS.

1295	White Winter Wheat (4 minots).	F. Perrault, L'Assomption.
1296	Do	do J. Logan, Montreal.
1297	Do	do Joseph Charretier, Pointe aux Trembles.
1298	Do	do J. P. & T. A. Dawes, Lachine.
1299	Do	do E. Caron, Rivière du Loup.
1300	Red Winter Wheat.	F. Perrault, L'Assomption.

GRAIN AND SEEDS.

27

1301	Red Winter Wheat.	W. H. Vaughan, St. Johns.
1302	Do do	E. Caron, Rivière du Loup.
1303	White Spring Wheat.	A. Somerville, Lachine.
1304	Do do	J. Logan, Montreal.
1304½	Do do	J. B. Laberge, St. Louis de Gonzague.
1305	Do do	A. Burwash, St. André.
1306	Do do	Léon Laporte, Pointe aux Trembles.
1307	Do do	D. McKinnon, Somerset.
1308	Do do	G. Lefebvre, Lachine.
1309	Do do	R. Brodie, Cote St. Pierre.
1310	Do do	Arthur Webster, Meadow Bank.
1311	Red Spring Wheat.	N. Gravel, St. Martin.
1312	Do do	A. Somerville, Lachine.
1313	Do do	F. Perrault, L'Assomption.
1314	Do do	J. Yule, Chambly.
1315	Do do	J. Logan, Montreal.
1316	Do do	M. Raymond, fils, Longue Pointe.
1317	Do do	J. B. Laberge, St. Louis de Gonzague.
1318	Do do	W. H. Vaughan, St. Johns.
1319	Do do	D. Graham, Ormstown.
1320	Do do	A. Burwash, St. André.
1321	Do do	G. Poirier, St. Esprit.
1322	Do do	J. Muir, Hinchinbrooke,
1323	Do do	J. Drummond, Montreal.
1324	Do do	Jacques Léonard, Pointe aux Trembles.
1325	Do do	Paul Desjardins, Ste. Rose.
1326	Do do	J. Charretier, Pointe aux Trembles.
1327	Do do	C. Letaug, Pointe Claire.
1328	Do do	A. Hamel, St. Foy.
1329	Do do	J. Smith, Pointe Claire.
1330	Do do	J. B. Dagenais, Ste. Rose.
1331	Do do	P. Doré, Lapralrie.
1332	Do do	F. X. Bonneau, St. Philippe.
1333	Do do	A. McNaughton, Hinchinbrooke.
1334	Do do	J. Fillion, Terrebonne.
1335	Do do	N. Grenier, St. Grégoire.
1336	Do do	A. Webster, Meadow Bank.
1337	Do do	Léon Laporte, Pointe aux Trembles.
1338	Do do	F. Monette, do
1339	Do do	W. Boa, St. Laurent.
1340	Do do	N. Laporte, St. Bruno.
1341	Do do	Luc Dubuc, Longueuil.
1342	Do do	P. Robidoux.
1342½	Do do	L. Laporte, Pointe aux Trembles.
1343	Barley, two-rowed.	C. Crawford, Petite Cote.
1344	Do do	N. Préfontaine, St. Bruno.
1345	Do do	J. H. Marshall, St. Eustache.
1346	Do do	J. Yule, Chambly.
1347	Do do	Jas. Allan, Pointe aux Trembles.
1348	Do do	G. Kidd, Petite Cote.
1349	Do do	J. Logan, Montreal.
1350	Do do	M. Raymond, Longue Pointe.
1351	Do do	M. Raymond, fils, do

1352	Barley, two-rowed.	A. West, St. Foy.
1353	Do do	G. West, do
1354	Do do	W. H. Vaughan, St. Johns.
1355	Do do	D. Graham, Ormstown.
1356	Do do	D. Martin, St. Esprit.
1357	Do do	M. Moody, Terrebonne.
1358	Do do	H. Higgins, Mile End.
1359	Do do	J. Scott, Montreal.
1360	Do do	J. Muir, Hinchinbrooke.
1361	Do do	M. McColl, St. Jos. du Lac.
1362	Do do	J. Drummond, Montreal.
1363	Do do	P. Desjardins, Ste. Rose.
1364	Do do	C. Charretier, Pointe aux Trembles.
1365	Do do	Chs. Daunais, fils, Terrebonne.
1366	Do do	C. Letang, Pointe Claire.
1367	Do do	D. Ryan, Cote St. Louis.
1368	Do do	D. Drummond, Petite Cote.
1369	Do do	J. Smith, Pointe Claire.
1370	Do do	J. Doble, St. Augustin.
1371	Do do	S. Johnson, Montreal.
1372	Do do	W. Taylor, St. Foy.
1373	Do do	J. Jackson, Cote St. Paul.
1374	Do do	A. Préfontaine, Longueuil.
1375	Do do	G. Ouellette, Terrebonne.
1376, 1377	do do	A. Webster, Meadow Bank.
1378	Do do	W. Boa, St. Laurent.
1379	Do do	R. T. Raynes, Montreal.
1380	Do do	Thos. Swall, Cote des Neiges.
1381	Do do	N Laporte, St. Bruno.
1382	Do do	E. Caron, Rivière du Loup.
1383	Do do	E. Cameron, St. Andrew.
1384	Do do	G. Ouellette, Terrebonne.
1384½	Do do	L. Legault, Pointe Claire.
1385	Do do	T. Robidoux, St. Philippe.
1385½	Do do	Luc Dubuc, Longueuil.
1385¾	Do do	Jas. Buchanan, St. Michel.
1386	Barley, four-rowed.	C. Crawford, Petite Côte.
1387	Do do	M. Raymond, Longue Pointe.
1388	Do do	A. McColl, St. Joseph du Lac.
1389	Do do	W. H. Vaughan, St. Johns.
1390	Do do	D. Graham, Ormstown.
1391	Do do	G. Poirier, St. Esprit.
1392	Do do	A. Galbraith, St Clément.
1393	Do do	J. Charretier, Pointe aux Trembles.
1394	Do do	J. B. Dagenais, Ste. Rose.
1395	Do do	S. Johnson, Montreal.
1396	Do do	G. Fittimore, St. Jacques le Mineur.
1397	Do do	F. X. Bonneau, St. Philippe.
1398	Do do	R. Simard, L'Assomption.
1399	Do do	F. Monette, Pointe aux Trembles.
1400	Do do	J. Buchanan, St. Michel.
1401	Do do	L. Legault, Pointe Claire.
1402	Do do	E. Caron, Rivière du Loup.
1403	Rye (4 minots).	F. Perrault, L'Assomption.

GRAINS AND SEEDS.

29

1404	Rye (4 minots).	W. Evans, Montreal.
1405	Do	J. Parke, Ste. Marthe.
1406	Do	J. Shields, Lachine.
1407, 1407½	Oats, White.	O. Crawford, Petite Cote.
1408	Do	N. Prefontaine, St. Bruno.
1409	Do	H. McDonald, Lower Lachine.
1410	Do	F. Perrault, L'Assomption.
1411	Do	J. Marshall, St. Eustace.
1412	Do	J. Yule, Chambly.
1413	Do	L. H. Bachelder, Rougemont.
1414	Do	Jas. Allen, Pointe aux Trembles.
1415	Do	N. Bachelder, Rougemont.
1416	Do	G. Kidd, Petite Cote.
1417	Do	J. Logan, Montreal.
1418	Do	M. Raymond, Longue Pointe.
1419	Do	M. Raymond, fils, Longue Pointe.
1420	Do	A. West, St. Foy.
1421	Do	G. West, St. Foy.
1422	Do	W. H. Vaughan, St. Johns.
1423	Do	D. Martin, St. Esprit.
1424	Do	G. Poirier, St. Esprit.
1425	Do	M. Moody, Terrebonne.
1426	Do	Jacques Léonard, Pointe aux Trembles.
1427	Do	Paul Desjardins, Ste. Rose.
1428	Do	J. Charretier, Pointe aux Trembles.
1429	Do	Chas. Daunais, fils, Terrebonne.
1430	Do	J. Gadebois, Terrebonne.
1431	Do	Robt. Crozier, Lachute.
1432	Do	J. Dobie, St. Augustin.
1433	Do	J. Drummond, Petite Cote.
1434	Do	F. X. Bonneau, St. Philippe.
1435	Do	A. McNaughton, Hinchinbrooke.
1436	Do	W. Taylor, St. Foy.
1437	Do	J. Jackson, Cote St. Paul.
1438	Do	G. Ouellette, Terrebonne.
1439	Do	R. Brodie, Cote St. Pierre.
1440	Do	J. Fillion, Terrebonne.
1441-1442	Do	W. Faris, Sorel.
1443	Do	N. Grenier, St. Grégoire.
1444	Do	R. Simard, L'Assomption.
1445	Do	Leon Laporte, Pointe aux Trembles.
1446	Do	F. Monette, do
1447	Do	R. Lecallier, St. Laurent.
1448	Do	L. Legault, Pointe Claire.
1449	Do	D. Dubuc, Longueuil.
1450	Do	F. Lecavallier, St. Laurent.
1451	Do	G. Ouellette, Terrebonne.
1452	Do	T. Robidoux, St. Philippe.
1452½	Do	M. Vincent, St. Hubert.
1453	Oats, Black.	G. West, St. Foy.
1454	Do	D. Graham, Ormstown.
1455	Do	W. Evans, Montreal.
1456	Do	J. Charretier, Pointe aux Trembles.

1457	Oats, Black.	F. X. Bonneau, St. Philippe.	
1458	Do	T. Robidoux, St. Philippe.	
1459	Field Peas (four minots).	O. Letang, Pointe Claire.	
1460	Do	A. Ste. Marie, Laprairie.	
1461	Do	J. Gadebols, Terrebonne.	
1462	Do	D. Drummond, Petite Cote.	
1463	Do	J. B. Dagenais, Ste. Rose.	
1464	Do	J. Drummond, Petite Cote.	
1465	Do	E. Bouchard, Laprairie.	
1466	Do	A. Brousseau, do	
1467	Do	F. X. Bonneau, St. Philippe.	
1468	Do	A. McNaughton, Hinchinbrooke.	
1469	Do	J. Jackson, Côte St. Paul.	
1470	Do	G. Ouellette, Terrebonne.	
1471	Do	R. Brodie, Côte St. Pierre.	
1472	Do	T. Fillion, Terrebonne.	
1473	Do	J. Meloche, St. Geneviève.	
1474	Do	T. Meloche, do	
1475	Do	J. Shields, Lachine.	
1476	Do	J. Charretier, Pointe aux Trembles.	
1477	Do	P. Dagenais, Ste. Rose.	
1478	Do	G. Kidd, Petite Cote.	
1479	Do	J. Parke, Ste. Marthe.	
1480	Do	D. Graham, Ormstown.	
1481	Do	W. H. Vaughan, St. Johns.	
1482	Do	M. Raymond, fils, Longue Pointe.	
1483	Do	J. Snowdon, Cote St. Luc.	
1484	Do	M. Raymond, Longue Pointe.	
1485	Do	D. Laird, Laprairie.	
1486	Do	N. Batchelder, Rougemont.	
1487	Do	J. Allen, Pointe aux Trembles.	
1488	Do	L. H. Batchelder, Rougemont.	
1489	Do	F. Perrault, L'Assomption.	
1490	Do	N. Gravel, St. Martin.	
1491	Do	N. Préfontaine, St. Bruno.	
1492	Do	O. Crawford, Petite Cote.	
1493	Do	R. Simard, L'Assomption.	
1494	Do	F. Monnette, Pointe aux Trembles.	
1495	Do	N. Laporte, St. Bruno.	
1496	Do	R. Lecavallier, St. Laurent.	
1497	Do	L. Legault, Pointe Claire.	
1498	Do	G. Ouellette, Terrebonne.	
1499	Do	J. Scott, Montreal.	
1500	Do	T. Robidoux, St. Philippe.	
1501	Marrowfat Peas (two minots).	T. Verdon, St. Laurent.	
1502	Do	do	L. H. Batchelder, Rougemont.
1503	Do	do	Jas. Allen, Pointe aux Trembles.
1504	Do	do	N. Batchelder, Rougemont.
1505	Do	do	A. West, St. Foy.
1506	Do	do	G. West, do
1507	Do	do	W. H. Vaughan, St. Johns.
1508	Do	do	R. Brodie, Côte St. Paul.
1509	Do	do	Col. D. Batchelder, Rougemont.

1510	Marrowfat Peas.	J. Shields, Lachine.
1511	Do do	A. Webster, Meadow Bank.
1512	Do do	W. Boa, St. Laurent.
1513	Do do	R. T. Raynes, Montreal.
1514	Do do	Thomas Swail, Cote des Neiges.
1515	Do do	R. Lecavallier, St. Laurent.
1515½	Do do	J. Snowdon, Côte St. Luc.
1516	Tares (two minots).	O. Crawford, Petite Cote.
1517	Do	T. Verdon, St. Laurent.
1518	Do	N. Batchelder, Rougemont.
1519	Do	J. Logan, Montreal.
1520	Do	J. B. Laberge, St. Louis de Gonzague.
1521	Do	D. Graham, Ormstown.
1522	Do	W. Evans, Montreal.
1523	Do	F. Perrault, L'Assomption.
1524	Do	Jacques Léonard, Pointe aux Trembles.
1525	Do	T. Charretier. do.
1526	Do	A. Brons. ou, Laprairie.
1527	Do	F. X. Bonneau, St. Philippe.
1528, 1529	Do	J. Shields, Lachine.
1530	Do	J. Charretier, St. Clément.
1531	Do	R. Lecavallier, St. Laurent.
1532	Do	E. Caron, Rivière du Loup.
1533	Do	T. Robidoux, St. Philippe.
1534	White Field Beans (two minots).	J. Marshall, St. Eustache.
1535	Do do	J. Yule, Chambly.
1536	Do do	L. H. Batchelder, Rougemont.
1537	Do do	N. Batchelder, do.
1538	Do do	J. B. Laberge, St. Louis de Gonzague.
1539, 1540	Do do	W. H. Vaughan, St. Johns.
1541	Do do	J. Parke, Ste. Marthe.
1542	Do do	Paul Desjardins, Ste. Rose.
1543	Do do	J. Charretier, Pointe aux Trembles.
1544	Do do	T. Préfontaine, Longueuil.
1545	Do do	J. Dobie, St. Augustin.
1546	Do do	J. Jackson, Côte St. Paul.
1547	Do do	R. Brodie, Côte St. Pierre.
1548	Do do	Michel Fréjeau, St. Césaire.
1549	Do do	Col. D. Bachelder, Rougemont.
1550	Do do	W. Faris, Sorel.
1551	Do do	R. Lecavallier, St. Laurent.
1552	Do do	E. Cameron, St. Andrew.
1553	Do do	F. Lecavallier, St. Laurent.
1554	Do do	J. Scott, Montreal.
1555	Indian Corn, in the ear (White).	J. Logan, Montreal.
1556	Do do	F. Scullion, St. Foy.
1557	Do do	M. Raymond, Longue Pointe.
1558	Do do	J. Snowdon, Côte St. Luc.
1559	Do do	A. West, St. Foy.
1560, 1561	Do do	W. H. Vaughan, St. Johns.
1562	Do do	D. Graham, Ormstown.
1563	Do do	P. Martin, St. Laurent.
1564	Do do	J. Charretier, Pointe aux Trembles.
1565	Do do	F. X. Bonneau, St. Philippe.

1566	Indian Corn, in the ear (White).	R. Brodie, Cote St. Pierre.
1567	Do do	W. Faris, Sorel.
1568	Do do	L. Laporte, Pointe aux Trembles.
1569	Do do	F. Monette, do
1570	Do do	R. T. Raynes, Montreal.
1571	Do do	R. Lecavallier, St. Laurent.
1572	Do do	J. B. St. Aubin, do
1574	Do do	E. Cameron, St. Andrews.
1574½	Do do	L. Dubuc, Longueuil.
1573	Do do	L. Legault, Pointe Claire.
1575½	Do do	N. Gravel, St. Martin.
1576	Do do	H. Brodie, Montreal.
1576½	Do do	A. Préfontaine, St. Bruno.
1577	Indian Corn, in the ear (Yellow).	L. H. Batchelder, Rougemont.
1578	Do do	A. Batchelder, do
1579	Do do	J. Logan, Montreal.
1580	Do do	F. Scullion, St. Foy.
1581	Do do	M. Raymond, Longue Pointe.
1582	Do do	W. H. Vaughan, St. Johns.
1583	Do do	D. Graham, Ormstown.
1584	Do do	J. Parke, Ste. Marthe.
1585	Do do	Jacques Léonard, Pointe aux Trembles.
1586	Do do	J. Campbell, Noyan.
1587	Do do	G. Fittemose, St. Jacques le Miney,
1588	Do do	J. Jackson, Cote St. Paul.
1589	Do do	G. Ouellette, Terrebonne.
1590	Do do	R. Brodie, Côte St. Pierre.
1591	Do do	Col. D. Batchelder, Rougemont.
1592	Do do	F. E. Wadleigh, Hatley.
1593	Do do	W. Faris, Sorel.
1594	Do do	J. W. Toof, St. Armand.
1595	Do do	W. Boa, St. Laurent.
1596	Do do	J. B. St. Aubin, St. Laurent.
1597	Do do	L. Legault, Pointe Claire.
1598	Do do	J. Gadebois, Terrebonne.
1599	Timothy Seed, (two minots).	N. Préfontaine, St. Bruno.
1600	Do do	J. B. Marshall, St. Eustache.
1601	Do do	M. Raymond, Longue Pointe.
1602	Do do	A. West, Ste. Foy.
1603	Do do	J. A. Laberge, St. Louis de Gonzague.
1604	Do do	A. Williams, Longueuil.
1605	Do do	W. H. Vaughan, St. Johns.
1606	Do do	E. Sadler, Ormstown.
1607	Do do	D. Graham, do
1608	Do do	D. Martin, St. Esprit.
1609	Do do	G. Poirier, do
1610	Do do	W. Evans, Montreal.
1611	Do do	P. Martin, St. Laurent.
1612	Do do	J. Charretier, Pointe aux Trembles.
1613	Do do	F. Ouimet, Ste Rose.
1614	Do do	J. B. Dagenais, do
1615	Do do	P. N. Lefebvre, St. Rémi.
1616	Do do	A. Brosseau, Laprairie.
1617	Do do	A. McNaughton, Hinchinbrooke.

GRAINS AND SEEDS.

33

1618	Timothy Seed (two minots).	Col. D. Bachelder, Rougemont.
1619	Do do	N. Laporte, St. Bruno.
1620	Do do	J. Curry, River Baudet.
1621	Do do	E. Caron, Rivière du Loup.
1621½	Do do	N. Préfontaine, St. Bruno.
1622	Do do	E. Cameron, St. Andrew.
1622½	Do do	Robert Brodie, Cote St. Pierre.
1623	Do do	T. Robidoux, St. Philippe.
1623½	Do do	M. Vincent, St. Hubert.
1624	Clover Seed.	W. Evans, Montreal.
1625	Do	F. E. Wadleigh, Hatley.
1626	Do	A. Bernard, Belœil.
1627	Alsike Clover Seed (one minot).	W. Evans, Montreal.
1628	Hemp Seed (two minots)	B. Magnan, St. Alexis.
1629	Do do	W. Bea, St. Laurent.
1630	Flax Seed (two minots).	N. Préfontaine, St. Bruno.
1631	Do do	F. Perrault, L'Assomption.
1632	Do do	L. Verdon, St. Laurent.
1633	Do do	N. Batchelder, Rougemont.
1634	Do do	J. Logan, Montreal.
1635	Do do	M. Raymond, Longue Pointe.
1636	Do do	A. McColl, St. Joseph du Lac.
1637	Do do	J. B. Laberge, St. Louis de Gonzague.
1638	Do do	A. Williams, Longueuil.
1639	Do do	W. H. Vaughan, St. Johns.
1640	Do do	D. Graham, Ormstown.
1641	Do do	D. Martin, St. Esprit.
1642	Do do	G. Poirier, do.
1643	Do do	M. Moody, Terrebonne.
1644	Do do	B. Magnan, St. Alexis.
1645	Do do	Jacques Léonard, Pointe aux Trembles.
1646	Do do	Paul Desjardins, Ste. Rose.
1647	Do do	A. Bernard, Belœil.
1648	Do do	Chs. Daunals, fils, Terrebonne.
1649	Do do	J. Gadebois, do.
1650	Do do	A. Hamel, St. Foy.
1651	Do do	L. Genand, St. Jacques.
1652	Do do	F. Ouimet, Ste. Rose.
1653	Do do	J. B. Dagenais, Ste. Rose.
1654	Do do	P. N. Lefebvre, St. Remi.
1655	Do do	A. Brossenu, Laprairie.
1656	Do do	F. X. Bonneau, St. Philippe.
1657	Do do	A. McNaughton, Hinchinbrooke.
1658	Do do	N. Grenier, Ste. Gregoire.
1659	Do do	M. B. Southwick, St. Hilaire.
1660	Do do	L. Lalancette, St. Aimé.
1661	Do do	F. Monette, Pointe aux Trembles.
1662	Do do	W. Bea, St. Laurent.
1663	Do do	P. Pepin, Longue Pointe.
1664	Do do	N. Laporte, St. Bruno.
1665	Do do	J. Curry, River Beauvette.
1666	Do do	R. Lecavallier, St. Laurent.
1667	Do do	L. Legault, Pointe Claire.
1668	Do do	Jos. Fortier, Rivière du Loup.

les.

1669	Flax Seed (two minots).	E. Caron, Rivière du Loup.
1670	Do do	L. Dubuc, Longueuil.
1671	Do do	G. Onelette, Terrebonne.
1672	Do do	T. Robidoux, St. Philippe.
1672½	Do do	M. Vincent, St. Hubert.
1673	Mustard Seed (one minot)	W. Evans, Montreal.
1674	Swedish Turnip Seed (20 lbs.)	W. Evans, Montreal.
1675	White Belgian Carrot Seed (14 lbs.)	J. Logan, Montreal.
1676	Do do do	W. Evans, do.
1677	Long Mangold Wurzel Seed (12 lbs.)	N. Batchelder, Rougemont.
1678	Do do do	J. Logan, Montreal.
1679	Do do do	D. Martin, St. Esprit.
1680	Do do do	W. Evans, Montreal.
1681	Yellow Globe Mangold Wurzel Seed (12 lbs.)	J. Logan, Montreal.
1682	Do do do	W. Evans, do.
1682	Do do do	M. Moody, Terrebonne.
1684	Bale of Hops (112 lbs.)	J. P. & T. A. Dawes, Lachine.
1685	Do do	H. McGaffee, Stanstead.
1686	Do do	A. Wyman, Barnston.
1687	Do do	R. Wyman, do.
1688	Do do	N. Laporte, St. Bruno.
1689	Do do	C. A. Fisher, Ascot.
1690	Do do	G. Pomroy, Stanstead.
1691	Do do	F. G. Bodwell, Stanstead.
1692	Do do	S. Ball, do.
1693	Do do	B. Smith, Barnston.
1694	Horse Beans (two minots).	C. Crawford, Petite Cote.
1695	Do do	L. Verdor, St. Laurent.
1696	Do do	G. Kidd, Petite Cote.
1697	Do do	J. Logan, Montreal.
1698	Do do	M. Raymond, Longue Pointe.
1699	Do do	A. McColl, St. Joseph du Lac.
1700	Do do	W. H. Vaughan, St. Johns.
1701	Do do	Léon Laporte, Pointe aux Trembles.
1702	Do do	D. Drummond, Petite Cote.
1703	Do do	J. Dobie, St. Augustin.
1704	Do do	R. Brodie, Côte St. Pierre.
1705	Do do	Thos. Swail, Côte des Neiges.
1706	Do do	J. Scott, St. Michel.
1707	Do do	J. Buchanan, St. Michel.
1708	Barley (four minots).	N. Préfontaine, St. Bruno.
1709	Do do	F. Perrault, L'Assomption.
1710	Do do	N. Batchelder, Rougemont.
1711	Do do	G. Kidd, Petite Cote.
1712	Do do	M. Raymond, Longue Pointe.
1713	Do do	A. West, St. Foy.
1714	Do do	W. H. Vaughan, St. Johns.
1715	Do do	D. Martin, St. Esprit.
1716	Do do	G. Poirier, do.
1717	Do do	B. Magnan, St. Alexis.
1718	Do do	Jacques Léonard, Pointe aux Trembles.
1719	Do do	P. Desjardins, Ste. Rose.
1720	Do do	J. Gadebois, Terrebonne.

1721	Buckwheat (four minots).	J. Dobie, St. Augustin.
1722	Do do	E. Bouchard, Laprairie.
1723	Do do	A. Brosseau, do.
1724	Do do	F. X. Bonneau, St. Philippe.
1725	Do do	N. Grenier, St. Grégoire.
1726	Do do	F. Monette, Pointe aux Trembles.
1727	Do do	T. Robidoux, St. Philippe.
1728	Millet Seed (two minots).	W. Evans, Montreal.
1729	Hungarian Grass Seed (two minots).	W. Evans, Montreal.
1730	Black-Eyed Field Peas (two minots).	Jas. Shields, Lachine.

ROOTS AND FIELD CROPS.

[All Articles entered under the heads "Roots and Field Crops," "Dairy Products," &c., and the smaller Agricultural Implements, are placed in the Exhibition Building, St. Catherine Street.]

1731	Pink-Eyed Potatoes.	C. Crawford, Petite Côte.
1732	Do do	L. H. Batchelder, Rougemont.
1733	Do do	N. Batchelder, do.
1734	Do do	F. Scullion, St. Foy.
1735	Do do	A. West, do.
1736	Do do	G. West, do.
1737	Do do	J. Parker, Ste. Marthe.
1738	Do do	W. Taylor, St. Foy.
1739	Do do	R. Brodle, Côte St. Pierre.
1740	Do do	Michel Fréjeau, St. Césaire.
1741	Do do	H. Moss, St. Foy.
1742	Do do	R. T. Raynes, Montreal.
1743	Cup Potatoes.	N. Batchelder, Rougemont.
1744	Do	F. Scullion, St. Foy.
1745	Do	A. West, do.
1746	Do	G. West, do.
1747	Do	W. H. Vaughan, St. Johns.
1748	Do	A. Hamel, St. Foy.
1749	Do	W. Taylor, do.
1750	Do	H. Moss, do.
1751	Do	R. T. Raynes, Montreal.
1752	Garnet Chili Potatoes.	J. Logan, Montreal.
1753	Do do	F. Scullion, St. Foy.
1754	Do do	J. Snowdon, Côte St. Luc.
1755	Do do	A. West, St. Foy.
1756	Do do	G. West, do.
1757	Do do	L. B. Lawford, Sherbrooke.
1758	Do do	R. Brodle, Côte St. Paul.
1759	Do do	W. Boa, St. Laurent.
1760	Do do	R. T. Raynes, Montreal,
1761	White Potatoes.	C. Crawford, Petite Côte.
1762, 1763	Do	T. Harland, St. Laurent.
1764	Do	L. H. Batchelder, Rougemont.
1765	Do	N. Batchelder, do
1766	Do	G. Kidd, Petite Côte.
1767	Do	N. Gravel, St. Martin.
1768	Do	J. Logan, Montreal.
1769	Do	A. F. Scullion, St. Foy.
1770	Do	J. Snowdon, Côte St. Luc.
1771	Do	A. West, St. Foy.

1772	White Potatoes.	G. West, St. Foy.
1773	Do	P. Martin, St. Laurent.
1774	Do	H. Higgins, Mile End.
1775	Do	Jacques Léonard, Pointe aux Trembles.
1776	Do	L. B. Lawford, Sherbrooke.
1777	Do	T. Charretier, Pointe aux Trembles.
1778	Do	A. Ste Marie, Laprairie.
1779	Do	D. Ryan, Côte St. Louis.
1780	Do	O. Holdsworth, Petite Côte.
1781	Do	A. Hamel, St. Foy.
1782	Do	J. Dobie, St. Augustin.
1783	Do	S. Johnson, Montreal.
1784	Do	W. Taylor, St. Foy.
1785	Do	G. Ouellette, Terrebonne.
1786	Do	R. Brodie, Côte St. Pierre.
1787	Do	J. R. Bernard, Shipton.
1788	Do	A. Montgomery, do
1789	Do	W. B. Davidson, Côte St. Paul.
1790	Do	J. Davidson, Tannery West.
1791	Do	H. Moss, St. Foy.
1792	Do	R. Simard, L'Assomption.
1793	Do	F. Monette, Pointe aux Trembles.
1794	Do	W. Boa, St. Laurent.
1795	Do	R. T. Raynes, Montreal.
1796	Do	Thos. Swail, Côte des Neiges.
1797	Do	R. Lecavallier, St. Laurent.
1798	Do	J. Gadebois, Terrebonne.
1799	Do	T. Robidoux, St. Philippe.
1799½	Do	J. Hughes, Cote St. Louis.
1800	Red Potatoes.	N. Préfontaine, St. Bruno.
1801	Do	Thos. Harland, St. Laurent.
1802	Do	L. H. Batchelder, Rougemont.
1803	Do	N. Batchelder, do
1804	Do	N. Gravel, St. Martin.
1805	Do	F. Scullion, St. Foy.
1806	Do	J. Snowdon, Côte St. Luc.
1807	Do	G. West, St. Foy.
1808	Do	D. Graham, Ormstown.
1809	Do	H. Higgins, Mile End.
1810	Do	A. West, St. Foy.
1811	Do	Jacques Léonard, Pointe aux Trembles.
1812	Do	J. Charretier, do
1813	Do	J. Campbell, Noyan, C. E.
1814	Do	A. Hamel, St. Foy.
1815	Do	J. Dobie, St. Augustin.
1816	Do	S. Johnson, Montreal.
1817	Do	W. Taylor, St. Foy.
1818	Do	G. Ouellette, Terrebonne.
1819	Do	J. R. Bernard, Shipton.
1820	Do	A. Montgomery, do
1821	Do	J. Davidson, Tannery West.
1822	Do	H. Moss, St. Foy.
1823	Do	D. Ryan, Côte St. Louis.
1824	Do	R. T. Raynes, Montreal.

1825	Red Potatoes.	S. Swail, Côte des Neiges.
1826	Do	R. Lecavallier, St. Laurent.
1827	Do	J. B. Bouchard, St. Athanase.
1828	Do	J. Gadebois, Terrebonne.
1829	Do	T. Robidoux, St. Philippe.
1830	Blue Potatoes.	L. H. Batchelder, Rougemont.
1831	Do	J. Logan, Montreal.
1832	Do	F. Scullion, St. Foy.
1833	Do	J. Snowdon, Côte St. Luc.
1834	Do	A. West, St. Foy.
1835	Do	G. West, do
1836	Do	S. Johnson, Montreal.
1837	Do	F. R. Bernard, Shipton.
1838	Do	Col. D. Bachelder, Rougemont.
1839	Do	D. Ryan, Côte St. Louis.
1840	Do	R. T. Raynes, Montreal.
1841	Potatoes, other sorts.	N. Gravel, St. Martin.
1842	Do	do F. Scullion, St. Foy.
1843	Do	do J. Snowdon, Côte St. Luc.
1844	Do	do G. West, St. Foy.
1845	Do	do W. H. Vaughan, St. Johns.
1846	Do	do N. Batchelder, Rougemont.
1847	Do	do L. H. Batchelder, do
1848, 1849	Do	do A. West, St. Foy.
1850	Do	do J. Campbell, Noyan.
1851-1853	Do	do D. Ryan, Côte St. Louis.
1853 $\frac{1}{2}$, 1853 $\frac{1}{2}$, 1853 $\frac{3}{4}$	Do	do J. Hughes, Côte St. Louis.
1854	Do	do J. Dobie, St. Augustin.
1855	Do	do S. Johnson, Montreal.
1856	Do	do W. Taylor, St. Foy.
1857	Do	do R. Brodie, Côte St. Pierre.
1858	Do	do Col. D. Bachelder, Rougemont.
1859	Do	do Michel Fréjean, St. Césaire.
1860	Do	do F. E. Wadleigh, Hatley.
1861	Do	do H. Moss, St. Foy.
1862	Do	do W. Boa, St. Laurent.
1863	Do	do R. T. Raynes, Montreal.
1864	Do	do Thos. Swail, Côte des Neiges.
1865	Collection of Field Potatoes.	L. H. Batchelder, Rougemont.
1866	Do	do J. Logan, Montreal.
1867	Do	do F. Scullion, St. Foy.
1868	Do	do J. Snowdon, Côte St. Luc.
1869	Do	do A. West, St. Foy.
1870	Do	do G. West, do
1871	Do	do J. Parke, Ste. Marthe.
1872	Do	do J. Dobie, St. Augustin.
1873	Do	do R. T. Raynes, Montreal.
1874	Do	do W. Taylor, St. Foy.
1874 $\frac{1}{2}$	Do	do N. Batchelder, Rougemont.
1875	Swede Turnips.	C. Crawford, Petite Côte.
1876	Do	do J. Hernan, do
1877	Do	do G. Kidl, do
1878	Do	do Jas. Logan, Montreal.

1879	Swede Turnips.	F. Scullion, St. Foy.	
1880	Do	J. Snowdon, Côte St. Luc.	
1881	Do	A. West, St. Foy.	
1882	Do	W. H. Vaughan, St. Johns.	
1883	Do	D. Graham, Ormstown.	
1884	Do	W. Kimpton, Ste. Thérèse.	
1885	Do	W. Taylor, St. Foy.	
1886	Do	R. Brodie, Côte St. Pierre.	
1887	Do	F. E. Wadleigh, Hatley.	
1888	Do	W. B. Davidson, Côte St. Paul.	
1889	Do	J. Davidson, Tannery West.	
1890	Do	H. Moss, St. Foy.	
1891	Do	A. Kay, Granby.	
1892	Do	W. Boa, St. Laurent.	
1893	Do	R. T. Raynes, Montreal.	
1894	Do	H. Brodie, do	
1895	White Globe Turnips.	G. Kidd, Petite Côte.	
1896	Do	do	J. Logan, Montreal.
1897	Do	do	F. Scullion, St. Foy.
1898	Do	do	A. West, do
1899	Do	do	D. Graham, Ormstown.
1900	Do	do	W. Taylor, St. Foy.
1901	Do	do	R. Brodie, Côte St. Pierre.
1902	Do	do	W. D. Davidson, Côte St. Paul.
1903	Do	do	J. Davidson, Tannery West.
1904	Do	do	H. Moss, St. Foy.
1905	Do	do	W. Boa, St. Laurent.
1906	Do	do	E. Cameron, St. Andrew.
1906½	Do	do	T. Verdon, St. Laurent.
1907	Aberdeen Yellow Turnips.	C. Crawford, Petite Côte.	
1908	Do	do	T. Verdon, St. Laurent.
1909	Do	do	J. Logan, Montreal.
1910	Do	do	F. Scullion, St. Foy.
1911	Do	do	A. West, St. Foy.
1912	Do	do	W. H. Vaughan, St. Johns.
1913	Do	do	W. Kimpton, Ste. Thérèse.
1914	Do	do	W. Taylor, St. Foy.
1915	Do	do	R. Brodie, Côte St. Pierre.
1916	Do	do	W. B. Davidson, Côte St. Paul.
1917	Do	do	H. Moss, St. Foy.
1918	Do	do	J. Davidson, Tannery West.
1919	Do	do	R. T. Raynes, Montreal.
1920	Red Carrots (twenty roots).	F. G. Marchand, St. Jean.	
1921	Do	do	C. Crawford, Petite Côte.
1922	Do	do	J. Kernan, do
1923	Do	do	N. Batchelder, Rougemont.
1924	Do	do	J. Logan, Montreal.
1925	Do	do	F. Scullion, St. Foy.
1926	Do	do	J. Snowdon, Côte St. Luc.
1927	Do	do	D. Martin, St. Esprit.
1928	Do	do	G. Poirier, do
1929	Do	do	J. Drummond, Montreal.
1930	Do	do	R. Brodie, Côte St. Pierre.
1931	Do	do	W. B. Davidson, Côte St. Paul.

1932	Red Carrots (twenty roots).		J. Davidson, Tannery West.
1933	Do		R. T. Davidson, Montreal.
1933½	Do		R. T. Raynes, Montreal.
1934	Do		E. Caron, Rivière du Loup.
1934½	Do		W. H. Vaughan, St. Johns.
1935	White Carrots (twenty roots).		F. G. Marchand, St. Jean.
1936	Do		C. Crawford, Petite Côte.
1937	Do		T. Verdon, St. Laurent.
1938	Do		L. Verdon, St. Laurent.
1939	Do		J. Kernan, Petite Côte.
1940	Do		L. H. Batchelder, Rougemont.
1941	Do		N. Batchelder, do
1942	Do		J. Logan, Montreal.
1943	Do		J. Snowdon, Côte St. Luc.
1944	Do		D. Graham, Ormstown.
1945	Do		D. Martin, St. Esprit.
1946	Do		G. Poirier, St. Esprit.
1947	Do		J. Charretier, Pointe aux Trembles.
1948	Do		A. Ste. Marie, Montreal.
1949	Do		E. Bouchard, Laprairie.
1950	Do		W. Sangster, St. Louis de Gonzague.
1951	Do		R. Brodie, Côte St. Paul.
1952	Do		J. Davidson, Tannery West.
1953	Do		R. T. Raynes, Montreal.
1954	Do		Thos. Swail, Côte des Neiges.
1955	Do		A. Bernard, Belœil.
1956	Do		J. B. St. Aubin, St. Laurent.
1957	Do		E. Caron, Rivière du Loup.
1958	Long Red Mangel Wurzel.		F. G. Marchand, St. Jean.
1959	Do	do	C. Crawford, Petite Côte.
1960	Do	do	L. H. Batchelder, Rougemont.
1961	Do	do	N. Batchelder, do
1962	Do	do	J. Logan, Montreal.
1963	Do	do	J. Snowdon, Côte St. Luc.
1964	Do	do	W. H. Vaughan, St. Johns.
1965	Do	do	D. Martin, St. Esprit.
1966	Do	do	G. Poirier, do
1967	Do	do	A. T. Drummond, Montreal.
1968	Do	do	A. Ste. Marie, Laprairie.
1969	Do	do	E. Bouchard, do
1970	Do	do	F. X. Bonneau, St. Philippe.
1971	Do	do	J. Meloche, Ste. Geneviève.
1972	Do	do	R. Simard, L'Assomption.
1973	Do	do	R. T. Raynes, Montreal.
1974	Do	do	E. Caron, Rivière du Loup.
1975	Do	do	E. Cameron, St. Andrew.
1976	Do	do	H. Brodie, Montreal.
1977	Red Globe Mangel Wurzel.		J. Logan, do
1978	Do	do	W. H. Vaughan, St. John.
1979	Do	do	A. Ste. Marie, Laprairie.
1980	Yellow Globe Mangel Wurzel.		F. G. Marchand, St. Jean.
1981	Do	do	C. Crawford, Petite Côte.
1982	Do	do	J. Kernon, do

1983	Yellow Globe Mangel Wurzel.	J. Logan, Montreal.
1984	Do do	J. Snowdon, Côte St. Luc.
1985	Do do	W. H. Vaughan, St. Johns.
1986	Do do	A. Ste. Marie, Laprairie.
1987	Do do	D. Drummond, Petite Côte.
1988	Do do	W. Sangster, St. Louis de Gonzague.
1989	Do do	R. T. Raynes, Montreal.
1990	Long Yellow Mangel Wurzel.	J. Logan, Montreal.
1991	Do do	W. H. Vaughan, St. Johns.
1992	Do do	D. Martin, St. Esprit.
1993	Do do	G. Peirier, do
1994	Do do	T. Drummond, Montreal.
1995	Do do	A. Ste. Marie, Laprairie.
1966	Do do	E. Bouchard, do
1997	Kohl Rabi.	T. Verdon, St. Laurent.
1998	Do	J. Logan, Montreal.
1999	Do	W. H. Vaughan, St. Johns.
2000	Do	R. Brodie, Côte St. Pierre.
2001	Do	R. T. Raynes, Montreal.
2002	Sugar Beet.	F. G. Marchand, St. Jean.
2003	Do	T. Verdon, St. Laurent.
2004	Do	J. Kernan, Petite Côte.
2005	Do	J. Logan, Montreal.
2006	Do	F. Scullion, St. Foy.
2007	Do	W. H. Vaughan, St. Johns.
2008	Do	A. Ste. Marie, Laprairie.
2009	Do	W. Sangster, St. Louis de Gonzague.
2010	Do	R. T. Raynes, Montreal.
2011	Do	Thos. Swail, Côte des Neiges.
2012	Do	E. Cameron, St. Andrew.
2013	Parsnips.	C. Crawford Petite Côte.
2014	Do	T. Verdon, St. Laurent.
2015	Do	J. Kernan, Petite Côte.
2015	Do	G. Kidd, do
2017	Do	F. Scullion, St. Foy.
2018	Do	W. H. Vaughan, St. Johns.
2019	Do	R. Brodie, Côte St. Pierre.
2020	Do	W. B. Davidson, Côte St. Paul.
2021	Do	J. Davidson, Tannery West.
2022	Do	R. T. Raynes, Montreal.
2023	Large Squashes, for Cattle.	J. Nicholson, Montreal.
2024	Do do	N. Batchelder, Rougemont.
2025	Do do	W. B. Davidson, Côte St. Paul.
2026	Do do	J. Davidson, Tannery West.
2027	Do do	R. T. Raynes, Montreal.
2028	Do do	G. Pomroy, Stanstead.
2028½, 2028¼, 2028¾	Do	J. Hughes, Côte St. Louis.
2029	Mammoth Field Pumpkins.	W. H. Vaughan, St. Johns.
2030	Do do	W. B. Davidson, Côte St. Paul.
2031	Do do	J. Davidson, Tannery West.
2032	Do do	R. T. Raynes, Montreal.
2033	Leaf Tobacco (20 lbs).	F. G. Marchand, St. Johns.
2034	Do do	F. Perrault, L'Assomption.
2035	Do do	F. L. Genand, St. Jacques.

DAIRY PRODUCTS, ETC.

2036	Leaf Tobacco (20 lbs.)	F. X. Bonneau, St. Philippe.
2037	Do do	A. Pinsonneault, La Tortue.
2038	Do do	A. Bondy, Lavaltrie.
2039	Do do	J. Fortin, Rivière du Loup.
2040	Do do	A. Kierzkowski, St. Charles.
2040½	Do do	T. Robidoux, St. Philippe.
2041	Scutched Flax (112 lbs.)	F. Perrault, L'Assomption.
2042	Do do	J. Logan, Montreal.
2043	Do do	B. Magnan, St. Alexis.
2044	Do do	M. Moody, Terrebonne.
2045	Do do	C. Daunais, fils, do.
2046	Do do	J. B. Dagenais, Ste. Rose.
2047	Do do	M. B. Southwick, St. Hilaire.
2048	Do do	B. Girard, fils, St. Pie.
2049	Do do	W. Boa, St. Laurent.
2050	Hemp (112 lbs)	B. Magnan, St. Alexis.
2051	Do do	W. Boa, St. Laurent.
2051½	Peach-Blossom Potatoes.	L. H. Batchelder, Rougemont.
2050½	Do do	N. Batchelder, do.

DAIRY PRODUCTS, &C.

2052	Keg of Butter (56 lbs.)	C. Crawford, Petite Cote.
2053	Do do	J. Trenholm, Trenholmville.
2054	Do do	Mrs. E. M. Campbell, Noyan, (Missisquoi.)
2055	Do do	W. Logan, South Georgetown.
2056	Do do	John Logan, Montreal.
2057	Do do	F. L. Gévand, St. Jacques.
2058	Do do	A. West, St. Foye.
2059	Do do	W. H. Vaughan, St. John's.
2060	Do do	A. Burwash, St. André.
2061	Do do	G. Poirier, St. Esprit.
2062, 63	Do do	H. Muir, Huntingdon.
2064	Do do	J. Parke, St. Marthe.
2065	Do do	J. Muir, Hinchinbrooke.
2066	Do do	R. Crozier, Lachute.
2067	Do do	D. Drummond, Petite Côte.
2068	Do do	J. B. Dagenais, Ste. Rose.
2069	Do do	J. Drummond, Petite Côte.
2070	Do do	A. McNaughton, Hinchinbrooke.
2071	Do do	T. Kraus, Frelighsburg.
2072	Do do	H. McGaffee, Stanstead.
2073	Do do	F. R. Bernard, Shipton.
2074	Do do	A. Montgomery, do.
2075	Do do	Col. D. Batchelder, Rougemont.
2076	Do do	J. W. Foot, St. Armand.
2077	Do do	B. Stevenson, St. Luc.
2078	Do do	W. Boa, St. Laurent.
2079	Do do	T. Jefferson, St. Andrew.
2080	Do do	J. Smith, do.
2081	Do do	J. B. Bouchard, St. Athanase.
2082	Do do	J. McGregor, St. Andrew.
2083	Do do	T. Robidoux, St. Philippe.

2084	Firkin of Butter, (28 lbs.)	C. Crawford, Petite Côte.
2085	Do do	J. Trenholm, Trenholmvile.
2086, 2087	Do do	J. Marshall, St. Eustache.
2088	Do do	J. Yule, Chambly.
2089	Firkin of Butter, (28 lbs.)	Thos. Harland, St. Laurent.
2090	Do do	G. Kidd, Petite Cote.
2091	Do do	D. Laird, Laprairie.
2092	Do do	W. Logan, South Georgetown.
2093	Do do	J. Logan, Montreal.
2094	Do do	F. L. Genand, St. Jacques.
2095	Do do	N. Raymond, Longue Pointe.
2096	Do do	S. Snowdon, Côte St. Luc.
2097	Do do	A. West, St. Foy.
2098	Do do	W. H. Vaughan, St. Johns.
2099	Do do	D. Graham, Ormstown.
2100	Do do	N. Burwash, St. André.
2101, 2102	Do do	M. Muir, Huntingdon.
2103	Do do	J. Parke, St. Marthe.
2104	Do do	T. Drummond, Montreal.
2105	Do do	W. Dunn, St. Rémi.
2106	Do do	J. Mulr, Hinchinbrooke.
2107	Do do	J. Campbell, Noyan.
2108	Do do	E. Holder, St. Luc.
2109	Do do	R. Crozier, Lachute.
2110	Do do	D. Drummond, Petite Côte.
2111	Do do	J. Drummond, Petite Côte.
2112	Do do	G. Filtemore, St. Jacques le Mineur.
2113	Do do	A. McNaughton, Hinchinbrooke.
2114	Do do	A. Prefontaine, Longueuil.
2115	Do do	P. H. Krans, Frelighsburg.
2116	Do do	H. McGaffee, Stanstead.
2117	Do do	F. R. Bernard, Sbipton.
2118	Do do	A. Montgomery, Sbipton.
2119	Do do	Colonel D. Batchelder, Rougemont.
2120	Do do	J. M. Fisk, Abbottsford.
2121	Do do	J. C. Wadleigh, Hatley.
2122	Do do	J. S. Osgood, Eaton.
2123	Do do	J. W. Toof, St. Armand.
2124	Do do	B. Stevenson, St. Luc.
2125	Do do	W. Boa, St. Laurent.
2126	Do do	B. Daignault, St. Bruno.
2127	Do do	B. Brodie, Côte St. Pierre.
2128	Do do	T. Jefferson, St. Andrew.
2129	Do do	G. Pomroy, Stanstead.
2130	Do do	Seth Ball, Stanstead.
2131	Do do	G. Larocque, Chambly.
2132	Do do	J. Smith, St. Andrew.
2133	Do do	T. B. Bouchard, St. Athanase.
2134	Do do	J. McGregor, St. Andrew.
2135	Do do	Luc Dubuc, Longueuil.
2136	Do do	T. Robidoux, St. Philippe.
2137	Cheese (30 lbs.)	J. Allan, Pointe aux Trembles.
2138	Do	J. Logan, Montreal.

2139	Cheese (30 lbs.)	W. H. Vaughan, St. Johns.
2140, 2141	Do	M. Muir, Huntingdon.
2142, 2143	Do	J. Muir, Hinchinbrooke.
2144	Do	E. E. Hill, Dunham.
2145	Do	T. Drummond, Montreal.
2146	Do	J. Parke, St. Marthe.
2147	Do	J. H. Keep, Granby.
2148	Do	R. Crozier, Lachute.
2149	Do	D. Drummond, Petite Côte.
2150	Do	L. C. Lefebvre, St. Rémi.
2151	Do	J. Drummond, Petite Cote.
2152	Do	A. Prefontaine, Longueuil.
2153	Do	R. Brodie, Côte St. Pierre.
2154, 2155	Do	H. McGaffee, Stanstead.
2156	Do	J. F. Osgood, Eaton.
2157	Do	J. W. Toof, St. Armand.
2158	Do	W. Vallance, Huntingdon.
2159	Stilton Cheese (14 lbs.)	J. H. Keep, Granby.
2160	Do do	A. Vallance, Huntingdon.
2161	Honey in the Comb (10 lbs.)	N. Gravel, Rougemont.
2162	Do do	L. H. Batchelder, Rougemont.
2163	Do do	J. Logan, Montreal.
2164	Do do	D. Graham, Ormstown.
2165	Do do	B. Magnan, St. Alexis.
2166	Do do	D. Drummond, Petite Côte.
2167	Do do	F. X. Bonneau, St. Philippe.
2168	Do do	J. F. Harvey, Hatley.
2169	Do do	J. J. Higgins, Côte St. Paul.
2170	Do do	J. Scott, St. Michel.
2171	Do do	Hill Gaffee, Stanstead.
2172	Do do	F. R. Bernard, Shipton.
2173	Do do	A. Montgomery, do
2174	Do do	Col. D. Batchelder, Rougemont.
2175	Do do	W. Farris, Sorel.
2176	Do do	B. Stevenson, St. Luc.
2177	Do do	S. T. Draper, Natfield.
2178	Do do	C. A. Fisher, Ascott.
2179	Do do	R. N. Webber, Richmond.
2180	Do do	J. Curry, River Baudett.
2181	Do do	G. Pomroy, Stanstead.
2182	Do do	L. Dubuc, Longueuil.
2183, 2184	do	A. N. Henry, Oshawa.
2185	Do do	T. Robidoux, St. Philippe.
2185½	Do do	S. Norris, Milton.
2186	Jar of Clear Honey.	N. Gravel, St. Martin.
2187	Do do	Thomas Marland, St. Laurent.
2188	Do do	L. H. Batchelder, Rougemont.
2189	Do do	N. Batchelder, do
2190	Do do	J. Logan, Montreal.
2191	Do do	D. Graham, Ormstown.
2192	Do do	B. Magnan, St. Alexis.
2193	Do do	J. Charretier, Pointe aux Trembles.
2194	Do do	J. Campbell, Noyau.
2195	Do do	D. Drummond, Petite Côte.

2196	Jar of Clear Honey.	F. X. Bonneau, St. Philippe.
2197	Do do	J. F. Harvey, Hatley.
2198	Do do	H. McGaffee, Stanstead.
2199	Do do	F. R. Bernard, Shipton.
2200	Do do	A. Montgomery, do
2201	Do do	Col. D. Batchelder, Rougemont.
2202	Do do	W. Farris, Sorel.
2203	Do do	B. Stevenson, St. Luc.
2204	Do do	Thomas Swail, Côte des Neiges.
2205	Do do	S. T. Draper, Natfield.
2206	Do do	C. A. Fisher, Ascot.
2207	Do do	Rit Webber, Richmond.
2208	Do do	J. Scott, St. Michel.
2209	Do do	G. Pomroy, Stanstead.
2210	Do do	J. McGregor, St. Andrew.
2211	Do do	L. Dubuc, Longueuil.
2212	Do do	A. N. Henry, Oshawa.
2213	Do do	T. Robidoux, St. Philippe.
2213½	Do do	L. Brousseau, St. Hubert.
2214	Maple Sugar (30 lbs).	F. L. Genand, St. Jacques.
2215	Do do	J. Muir, Hinchinbrooke.
2216	Do do	A. Cunningham, Godmanchester.
2217	Do do	H. McGaffee, Stanstead.
2218	Do do	A. Lyman, Barnston.
2219	Do do	Col. D. Batchelder, Rougemont.
2220	Do do	J. W. Toof, St. Armand.
2221	Do do	R. Simard, L'Assomption.
2222	Do do	C. A. Fisher, Ascot.
2223	Do do	J. F. Harvey, Hatley.
2224	Do do	Seth Ball, Stanstead.
2225	Ham (cured).	D. Graham, Ormstown.

AGRICULTURAL IMPLEMENTS.

2226, 2227	Iron Plough.	W. Evans, Montreal.
2228	Do do	J. Moffatt, Petite Côte.
2229	Do do	T. Vanvliet & Sons, Lacolle.
2229½	Do do	J. B. Grenier, Beauharnois.
2230, 2231	Wooden Plough.	W. Evans, Montreal.
2232-2234	Do do	C. Brooks, Ascot.
2235	Do do	Leclero & Nelson, Laprairie.
2236	Do do	J. Beauvais, do
2237, 2238	French Plough.	W. Evans, Montreal.
2239, 2340	Subsoil Plough.	W. Evans, Montreal.
2241, 2242	Do do	C. Brooks, Ascot.
2243, 2244	Heavy Harrows.	W. Evans, Montreal.
2245	Do do	J. Moffatt, Petite Côte.
2246	Do do	J. Curry, River Baudet.
2247	Do do	M. Beaudry, Montreal.
2247½	Do do	J. B. Grenier, Beauharnois.
2248, 2249	Light Harrows.	W. Evans, Montreal.
2250	Do do	J. Moffatt, Petite Côte.
2251	Do do	M. Bruneau, St. Constant.
2252	Do do	M. Frejeau, St. Césaire.
2252½, 2253½	Do do	J. B. Grenier, Beauharnois.

2253, 2254	Drill Harrows.	W. Evans, Montreal.	
2255	Iron Roller.	Do do.	
2256	Wooden Roller.	W. Logan, South Georgetown.	
2257	Do do	J. Scott, Montreal.	
2258	Do do	J. Drummond, Petite Côte.	
2259	Do do	M. Bruneau, St. Constant.	
2260	Do do	W. Evans, Montreal.	[treal.
2261	Collection of Hand Implements (for pulverization of the Soil).	W. Evans, Mon-	
2262, 2262½, 2263½	Cultivator, or Scarifier.	W. Evans, Montreal.	
2263	Do do	J. Curry, River Baudet.	
2263½, 2263½	Do do	J. B. Grenier, Beauharnois.	
2264	Do do	J. Smith, Montreal.	
2265	Do do	T. Vanvliet & Sons, Lacolle.	
2266	Do do	H. Collard, Gananoque.	
2267, 2268	Double Mould Board Plough.	W. Evans, Montreal.	
2269	Do do	J. Moffatt, Petite Côte.	
2270	Do do	C. Brooks, Ascot.	
2271	Do do	C. Daunais, fils, Terrebonne.	
2272, 2273, 2274	Horse Shoes.	W. Evans, Montreal.	
2275	Do	C. Brooks, Ascot.	
2276	Do	H. Collard, Gananoque.	
2276½	Do	J. B. Grenier, Beauharnois.	
2277	Collection of Hand Implements (for cleansing the Soil).	W. Evans, Montreal.	
2278	Do do do do	Frothingham & Workman, Montreal.	
2279	Grain Sowing Machine.	C. Crawford, Petite Côte.	
2280	Do do	W. Evans, Montreal.	
2281	Grain Sowing Machine.	J. Curry, River Baudett.	
2282, 2283	Beet and Carrot Sowing Machine.	W. Evans, Montreal.	
2284	Do do do	J. Curry, River Baudet.	
2285, 2286	Grass Seed Sowing Machine.	W. Evans, Montreal.	
2287	Do do	J. Curry, River Baudet.	
2288	Do do	E. Caron, Rivière du Loup.	
2289	Compost Sowing Machine.	W. Evans, Montreal.	
2290	Mowers.	W. Evans, Montreal.	
2291	Do	Frost & Wood, Smith's Falls.	
2292	Do	Bangs & Sleeper, Coaticook.	
2293	Do	J. Smith, Montreal.	
2294	Reapers.	W. Evans, do	
2295	Do	Frost & Wood, Smith's Falls.	
2296	Do	J. Smith, Montreal.	
2297	Mower and Reaper combined.	C. Crawford, Petite Côte.	
2298	Do do	W. Evans, Montreal.	
2299	Do do	Frost & Wood, Smith's Falls.	
2300	Do do	Frothingham & Workman, Montreal.	
2301	Collection of Hand Implements (for harvesting).	W. Evans, Montreal.	
2302	Do do	Frothingham & Workman, do	
2303	Horse Tedder.	W. Evans, do	
2304, 2305	Horse Rakes.	W. Evans, do	
2306	Do	S. G. Bush, Coaticook.	
2307	Do	J. St. Germain, St. Hyacinthe.	
2308	Do	C. F. Painchaud, Varennes.	
2309	Potato Digger.	W. Evans, Montreal.	
2310	Waggon.	J. Buchanan, St. Michel.	
2311	Do	M. Moody, Terrebonne.	

- 2312 Waggon. F. X. Nedeau, North Georgetown.
 2313 Scotch Cart. John Moffatt, Petite Côte.
 2314 Cart. L. S. Brousseau, St. Hubert.
 2315 One-Horse Threshing Machine. J. Smith, Montreal.
 2316 Two-Horse do do M. Moody, Terrebonne.
 2317 Do do do J. Smith, Montreal.
 2318 Do do do W. Johnson, do.
 2319 Clover Threshing Machine. W. Evans, do.
 2320 Clover Threshing Machine. M. Moody, Terrebonne.
 2321, 2322 do do J. St. Germain, St. Hyacinthe.
 2323 Corn Hulling Machine. W. Evans, Montreal.
 2324 Hay Scutching Machine. M. Moody, Terrebonne.
 2325 Do do C. F. Palnchaud, Varennes.
 2326, 2327 Separators. W. Evans, Montreal.
 2328, 2329 Fanning Mills. Do do
 2330 Do do T. Lyons, L'Acadie.
 2331 Do do F. Douce, do.
 2332 Do do C. Brooks, Ascott.
 2333 Potato Washers. W. Evans, Montreal.
 2334 Do do J. Curry, River Baudet.
 2335 Cooking Apparatus. W. Evans, Montreal.
 2336, 2337, 2338 Root Cutter. Do do
 2339, 2340, 2341 Straw Cutter Do do
 2342 Do do J. Smith, Montreal.
 2343 Do do J. St. Germain, St. Hyacinthe.
 2344 Corn Crusher. W. Evans, Montreal.
 2345 Churns. E. Bevier, Hamilton.
 2346, 2347 Churns. W. Evans, Montreal.
 2348 Do C. Brooks, Ascot.
 2349 Do J. Carruther, St. Clement.
 2350 Do J. Curry, River Baudet.
 2351 Do J. St. Germain, St. Hyacinthe.
 2352, 2353 Cheese Press. W. Evans, Montreal.
 2354 Do do J. Carruthers, St. Clement.
 2355 Do do J. Curry, River Baudet.
 2356 Cider Press. W. Evans, Montreal.
 2357 Gates. E. Caron, Rivière du Loup.
 2358-2365 Do R. Lewis, Melbourne.
 2366 Bee Hives. P. Roberge, St. Dominique.
 2367 Do W. Evans, Montreal.
 2368 Do J. J. Higgins, Côte St. Paul.
 2369 Do F. R. Bernard, Shipton.
 2370 Do S. T. Draper, Natfield.
 2371 Do R. V. Webber, Richmond.
 2372 Do J. Curry, River Baudet.
 2373 Do G. Pomroy, Stanstead.
 2374, 2375 Do A. N. Henry, Oshawa.
 2375½ Do S. Norris, Milton.
 2376 Cheese Curd Cutter. M. Moody, Terrebonne.
 2377 Clod Crusher. Do do
 2378 Pea Harvester. H. Collard, Gananoque.
 2379 Turnip-sowing Machine. E. Caron, Maskinongé.
 2380, 2381 Hive and Bees. A. N. Henry, Oshawa.
 2382 Pea Harvester. H. Collard, Gananoque.

INDUSTRIAL DEPARTMENT.

- 1 Cooking, Parlor, and Hall Stoves, &c. Crevier & Poltras, Montreal.
- 2 Collection of Etoffe du Pays, Woollen Yarn, &c. Thos. Robinson, Mascouche.
- 3 Etoffe du Pays, Woollen Blankets, &c. Nazaire Prefontaine, St. Bruno. [C. W.]
- 4 Patchwork Quilt, Counterpane, Horse Blankets, &c. James Craig, Charlottenburgh,
- 5 Case of Hair Jewellery. E. G. Mellor, Montreal.
- 6 Two samples Roofing Felt. Sidey & Crawford, agents, Montreal.
- 7 Water-Color Painting of Canadian Scenery. Washington Friend, Montreal.
- 8 Five One-bushel bags of Shoe Pegs. J. A. Leclerc, Montreal.
- 9 Lovell's Series of School Books. John Lovell, Printer and Publisher, Montreal.
(See Advertisement, p. 59.)
- 10 Powdered Drugs and Medicinal Substances, &c. Lymans, Clare & Co., Montreal.
- 11 Specimen Bookbinding, Chas. C. Dagg, Montreal.
- 12 Patchwork Quilt, Hearth Rug, &c. N. Bachelder, Rougemont.
- 13 Etoffe du Pays and White Flannel. G. Winterbottom, Lacolle.
- 14 Sideboard. Andrew Molinelli, Montreal. (See Card, p. 58.)
- 15 Three Patchwork Quilts. Francis Vallière, Mile End, Montreal.
- 16 Twelve yards Linen and Specimen of Linen Thread. L. H. Bachelder, Rougemont.
- 17 Embroidered Screen, and Portrait (Pastel). Mrs. James Spaulding, Montreal.
- 18 Large Hay Scale and Counter Scales. A. Gordon & Co., Montreal. [treal.]
- 19 Pharmaceutical Preparations, Powdered Drugs, &c. Kerry Bros. & Crathern, Mon-
- 20 Piece White Flannel. G. Poirier, St. Esprit.
- 21 Piece White Flannel and Woollen Blankets. David Martin, St. Esprit.
- 22 Etoffe du Pays, Woollen Flannel, Counterpane, &c., and home-made Wine, Vinegar,
&c. Dr. F. L. Genand, St. Jacques. [Côte St. Paul.]
- 23 Collection of Axes, Edge Tools, and an Improved Bee-hive. J. J. Higgins & Co.,
- 24 Pair of Woollen Blankets, Woollen Shawl, &c. Henry Bennie, English River, C. E.
- 25 Pair of Woollen Blankets, Crotchet Table-cloth, &c. W. Wylie, Norton Creek, C. E.
- 26 An Assortment of Envelopes. P. B. Martin & Bros., Montreal.
- 27 Fire-Screen of "Decalcomanie" Work on White Silk. Miss Emily Bagg, Montreal.
- 28 Piece of Woollen Flannel and Fine Etoffe, J. Bte. Racine, St. Pie.
- 29 Woollen Blankets. J. A. Allan, Pointe aux Trembles.
- 30 Etoffe du Pays. Narcisse Gravel, St. Martin.
- 31 One Centre Table. Pierre Roy, Quebec.
- 32 Three Deer Skins. J. Leimer, Montreal.
- 33 Braided Table Cloth and Lady's Work-Bag. Chs. Vieau, Montreal.
- 34 Three Deer Skins. John Scott, Montreal.
- 35 Model of Automatic Safety Car Coupling. A. B. Taft & Co., Montreal.
- 36 Various Manufactures of Glass. Canada Glass Co., Montreal.
- 37 New Invention for marking Music Time. F. Benoit, Montreal.
- 38 Case of Plumes and Feathers. A. C. Amary, Montreal.
- 39 Magic Liquid Blue. L. W. Scott, Montreal. [McCulloch, Montreal]
- 40 Samples of Pottery and Glass, Mosaic Pavements, Papier Machie, &c. Smith &
- 41 Rosewood Drawing-Room Set, Fancy Inlaid Boudoir Set, &c. J. & W. Hilton,
Montreal. (See Advertisement, page 62.)

- 42 Grass, Grain, and Brass Scythes, Shovels, &c. Frothingham & Workman.
 43 Sewing Machines. C. W. Williams & Co., Montreal.
 44 Gold and Silver Ware, Watches, &c. Savage & Lyman, Montreal. (*See Adv.*, p. 57.)
 45 Variety of Copper Ores, Iron Ore, and Roofing Slate. T. Mackie, Melbourne, C.E.
 46 Specimens of Lithographic Printing, Stones, &c. Roberts & Reinhold, Montreal.
 47 Mathematical and Philosophical Instruments. C. Hearn, Montreal. (*See Card*, p. 57.)
 48 Collection of Untouched Photographic Portraits, &c. A. Bolseau, Montreal.
 49 One Pleasure Boat, collection of Oars and Paddles. M. D. Gorman, Kingston, C. W.
 50 Collection of Splints, &c., for Surgical Appliances. D. Larichellere, Laprairie.
 51 Specimens of Sawed and Dressed Plank. Chas. Esplin, Montreal.
 52 Samples of Corn Starch and Flour. W. T. Benson, Montreal.
 53 One Turret Clock, Philosophical Instruments, &c. H. Grant, Montreal.
 54 Fine-cut Isinglass, Hand-made Turf, &c. R. G. H. Dillon, Longue Pointe.
 55 Model of Brook's Self-acting carriage Brake, Morticing Machine, &c. Chas. Brooks, Lennoxville, C. E.
 56 One piece of Linen, Flannel and Etoffe du Pays. P. Desjardins, Ste. Rose. [Alexis.
 57 Quilts in Crotchet-work, Counterpane, Woollen Shawl, &c. Benjamin M. Gnan, St.
 58 Etoffe du Pays. J. Charretier, Pointe aux Trembles.
 59 One Woollen Shawl, &c. E. Holden, St. Johns.
 60 One Diamond, found on a farm. John Carr, Godmanchester.
 61 Chenille Frame and Picture, Table Cloth, &c. P. Doré, Laprairie.
 62 Piece Etoffe du Pays and Linen Check. J. Gadebois, Terrebonne.
 63 One Counterpane, Woollen, Flannel, &c. Edwd. Sadler, Ormstown.
 64 Two Pairs Woollen Socks, &c. Thos. Guy, Oshawa, C. W.
 65 Three Family Sewing Machines. Chas. Irwin, Belleville, C. W.
 66 One Four-pull Beer Engine, set Ship Stanchions, &c. A. Mulholland, Quebec.
 67 Tweeds and Flannels. A. Robertson & Co., Montreal.
 68 Collection of Lace Braid Work. Mrs. H. Bartlott, Montreal.
 69 Oil Painting. Joseph Leveille, Montreal. [Rivière du Laup.
 70 One Embroidered Piano Cover, Slippers, Lady's Reticule, &c. L. D. Grenier,
 71 Specimens of Book-binding. G. E. Desbarats, Quebec.
 72 Julien's Addressing Press. Henri Julien, Quebec.
 73 The Victoria Washing Machine. W. McMaster & Co., Montreal.
 74 One Barrel Wheat, Flour, and Corn Meal. Parkyn & Brodie, Cote St. Paul.
 75 Collection Trunks, Valises, and Smiths' Bellows. G. Barrington, Montreal.
 76 Collection of Fancy Soap. J. G. Healy, Montreal.
 77 Embroidery in Silk and Muslin. Mrs. H. McVittie, Montreal.
 78 Specimens of Fancy Printing. Louis Perrault, jr., Montreal.
 79 One piece of Linen, Etoffe, Flannel, &c. J. B. Bouchard, St. Athanase.
 80 Collection of Cast-Steel Saws. Morland, Watson & Co., Montreal Saw Works.
 81 Home-made Bread, and Embroidery in Wood. Miss Maggie Brodie.
 82 Cinderella Coal-Sifting Machine. Paul Ceredc, Montreal.
 83 Single and Double Thread Family Sewing Machines. John Cary, River Baudet.
 84 One Counterpane, Piece Linen, &c. B. Daignault, St. Bruno.
 85 Piece Linen, Woollen, Flannel, &c. Wm. Bon, St. Laurent.
 86 Home-made Bread and Quilt. Mrs. J. W. Toof, St. Armand, C.E.
 87 Corn Meal (1 cwt.), Farina Entière, &c. A. Henderson, Huntingdon. [town.
 88 Pair Blankets, Counterpane, and Home-made Bread. Dougall Graham, Dennis-
 89 Model of Pontoon Bridge. Daniel Klein, Montreal.
 90 Barrel of Flour, Corn Meal, Pearl Barley, &c. A. W. Ogilvie & Co., Montreal.
 91 Pair Blacksmiths' Bellows and Portable Forge. S. S. Barlow, Montreal.
 92 Woollen, Flannel, Etoffe, &c. James Shields, Lachine.
 93 Calico Patchwork Quilt. Miss Malvina Demers, Montreal.

- 94 Blankets, Counterpane, Quilt, Fancy Knitting Work, &c. B. Gerard, St. Hyacinthe.
 95 Embroidery, collection of Straw Work, Quilts, &c. B. A. R. Simard, L'Assomption.
 96 Sash (arrow-head pattern), Etoffe, &c. N. Grenier, St. Grégoire.
 97 Rosewood Bureau. Isidore Heribel, St. Hyacinthe.
 98 Etoffe, Horse Blankets, &c. L. Brosseau, St. Hubert.
 99 Pair Slippers, &c. Andw. Cunningham, Godmanchester.
 100 Home-made Bread and Biscuit, Woollen Mittens, &c. J. M. Flak, Abbotsford.
 101 One Woollen Plaid. R. Wyam, Barnston.
 102 Etoffe and Flannel. Joseph Meloche, Ste. Geneviève.
 103 One Bee-Hive. A. Montgomery, Shipton.
 104 Sweet Pickled Tomatoes and Plums. Mrs. Campbell, Noyan.
 105 Coloured Flannel, Mittens, Etoffe, &c. A. McNaughton, Hinchinbrooke.
 106 Manufactured Tobacco and Snuff. Starke, Smith & Co., Montreal.
 107 Two Calico Patchwork Quilts and two Hand-wove Coverlets. Mrs. J. J. Higgins, Côte St. Paul.
 108 Axe, Pick, Hammer and other Tool Handles. John Higgins, Cote St. Paul.
 109 Piece Embroidery in Wool, and Frame in Leather Work. Miss Phiomene De-
 110 Architectural Design. W. H. Hodson, Montreal. [caric, Montreal.
 111 Washing Machine, &c. Johnson Taylor, Coaticooke.
 112 Collection of Leather. Thomas Ecroyd, Montreal. [Montreal.
 113 Specimens of Decorative Sign Writing and Ornamental Japanning. Chas. Storer,
 114 Model of Water Wheel, &c. A. D. Cole, Montreal.
 115 One Sugar Ornament. James Griffin, Montreal.
 116 Fire and Burglary Detective. S. H. Barnett, Montreal.
 117 Embroidering in Wool, in Frame, Table Cover, &c. Janvier Desmarais, St. Marc.
 118 Pair Woollen Blankets, &c. Joseph Geoffrion, Varennes.
 119 Pickles. Wm. McNaughton, Montreal. [C. W.
 120 Woollen Stockings, Shawl, Counterpane, &c. Mrs. Mary Langrick, Brockville,
 121 Carved Oak Bracket. Steven Preble, Montreal.
 122 Worsted Work, raised and ornamental. Miss Sarah Smith, Montreal.
 123 Embroidery in Wool, in frame. Miss Charlotte Fisher.
 124 Seven Jars Pickles. Miss Jane C. Isaacson, Montreal.
 125 Two Sets Carriage Harness. J. B. Senecal, Montreal.
 126 Small Carriage, driven by hand. F. Barbeau, St. Laurent.
 127 Three Drawings in Water Color and Crayon. E. Kilner, Hochelaga.
 128 Water Color Drawing and Steel Plate Engraving. A. W. Graham, Montreal.
 129 Glass Box, Painted Oriental. Mrs. F. Dutriyac, Sault au Recollet.
 130 Basket of Seaweed, in frame. Miss P. Thompson, Montreal.
 131 Frame containing Hair Flowers. Miss Mary F. Muncy, Quebec.
 132 Fancy Toilet Soaps. John Butler, Quebec.
 133 Cricket Bats and Wickets. Wm. Peacock, Montreal.
 134 Carriages and Sleighs. N. & A. C. Larivière, Montreal.
 135 Sewing Machine, with operator at work. Thos. Milner, Montreal.
 136 Founders' Facings and Supplies. Lamb & Davidge, Montreal.
 137 Crochet Table Cover, Foot Stool, &c. Peter Gardner, Dundee.
 138 Window and Door Fastenings and Locks. J. Gordon, Montreal.
 139 Two Oil Paintings, two Water Color Paintings, and one frame of Original Litho-
 graphic Drawings. W. R. Snow, Montreal.
 140 Fishing Tackle. Chas. Dunbar, Montreal. [St. Antoine.
 141 Calico Patchwork Quilt, containing 7756 pieces, &c. Miss Marion Martin, Cote
 142 Kindling Fire Wood. Deacon & Pink, Montreal.
 143 Improved Moulded Collars. Rice & Brothers, Montreal.
 144 Sheet-iron, Nails, Spikes, Zinc Springs, &c. J. T. Bigelow & Co., Montreal.

- 145 Upper Leather, Sheep, and Calf Skins. P. Blondin, Montreal.
- 146 Set of Bedroom Furniture, Etageres, &c. James Thompson, Montreal. [Toronto.
- 147 Gold and Silver English Lever Watches and Chronometers. Arthur W. Russell,
- 148 One White Knit Quilt, and two Braided Rugs. John M. Orcock, Shefford.
- 149 Tea Caddy. John Johnstone, Phillipsburg. [ville.
- 150 Plan of House for Labor, Woollen Mittens, &c. Mrs. Betsey C. Fisher, Lennox-
- 151 Spinning Wheel. Joseph Choquette, St. Hyacinthe.
- 152 Piece of White Woollen, &c. Peter McFarlane, Elgin.
- 153 Boxes and Fancy Tins Ground Spice. S. H. & A. S. Ewing, Montreal.
- 154 Watson's Patent Washing Machine. Clarke Watson, Coaticook.
- 155 Specimens of Book Binding. John Parolow, Montreal.
- 156 One Steam Gauge, &c. J. C. Collins, Toronto. [Montreal.
- 157 Design of Church, two Carved Groups, Crayon Drawing, &c. Albert Munro,
- 158 Three Sets Harness, Saddles, &c. D. W. Lawrie, Montreal.
- 159 Embroidery in Wool, &c. N. Daigneau, St. Hubert.
- 160 One Hearth Rug. S. Dubuc, St. Arsène.
- 161 Set of Splints. F. X. Desrivieres, Laprairie.
- 162 Wrought-Iron Gate, with Pillars. M. Cannon, Montreal.
- 163 Upper Leather and Calf Skins. Donovan, Moran & Co.
- 164 One Cot. N. Le Marchand, Montreal.
- 165 Four Sets Morticed Hubs. Evans & Sons, Montreal.
- 166 Fifty feet of Hose. Wm. Ferguson, Craig Street Hose Station.
- 167 Collection of Turning for Cabinet-making, &c. J. A. Craig, St Gabriel Locks.
- 168 Electro-Plated Ware, &c. Archer & Lymburner, Montreal. [Montreal,
- 199 Bits for cutting Plugs for Cabinet or Coachmakers' use, &c. Eugene Dupres.
- 170 One Case of Peach Stone Carving, and Gutta Percha. E. Charles Lionais, Mon-
- 171 Four Crayon Drawings. Miss Celia Jouette, Montreal. [treal.
- 172 Netting and Silk Embroidery. Miss Julia Lemon, Montreal.
- 173 Three Pillow Cases, embroidered in Silk, &c. Miss Young, Montreal.
- 174 One Express Waggon, and Baker's Waggon. Wm. Perry, do.
- 175 Cotton Cloth, Wadding, Batting, &c. Peter H. Wood, St. Gabriel Locks.
- 176 Four Oil Paintings. W. Sawyer, Kingston, C. W.
- 177 Ornamental Gold Frame, and Painting. W. Scott, Montreal.
- 178 One White and one Flannel Shirt. Edmond Sait, Quebec.
- 179 One Case Silver Ware, &c. R. Hendery, Montreal.
- 180 "Odous-Kallunterious" (Dentifrice). Peter L. Selley, Montreal.
- 181 Specimen of Braiding, Counterpane, Woollen Shawl, &c. J. Park, Vaudreuil.
- 182 Extract of Hemlock Bark, for tanning, and Sample of Leather. J. Miller & Co.,
Montreal.
- 183 Fancy Quilt Knitting, and Patchwork Calico, &c. Mrs. A. J. Reay, Russeltown
- 184 Two Mercurial Barometers. J. H. Dorwin, Montreal. [Flats.
- 185 Machine for manufacturing Boots and Shoes, &c. R. Gordon, Montreal.
- 186 One Pincushion in Beadwork. Mrs. Robinson, St. Hyacinthe.
- 187 Models of River Steamer, Steam Yacht, Steam Tug. &c. Wm. Powers, Montreal.
- 188 Canadian Superphosphate. E. L. Snow, Montreal.
- 189 Specimens of Light Forgings. W. H. Sarwick, Montreal.
- 190 Six Boxes of Machine-made Horse Nails. P. & G. Dunn, Côte St. Paul.
- 191 Carved Chess Table. Chas. Dauphin, Montreal.
- 192 Model of Safety Yacht. W. J. N. Turner, Montreal.
- 193 Coffins, Iron and Wood. M. Jannard, Montreal.
- 194 Paper Frame Passe-Partouts. Pollock & Calvert, Montreal.
- 195 One Set Double Carriage Harness. P. Kinsela, Montreal.
- 196 Four Oil Paintings, &c. J. T. Dutton, Montreal.

- 197 Collection of Plane-maker's Work. John Dawson, Montreal.
- 198 Three Crayon Drawings and Pencil Sketch. Miss Dutton, Montreal.
- 199 Portable 16-horse Power Steam Engine, &c. E. E. Gilbert, Montreal. (See *Adv.* p. 80.)
- 200 Collection of Photographs, and Photograph colored in Oil. J. Inglis, Montreal.
- 201 Marbleized Slate Mantles, Slate and Metal Roofing, Boot and Shoe Lasts, &c. G. W. Reed, Montreal. (See *Card*, p. 58.)
- 202 Specimens of Printing, Blotting, and Wrapping Papers. Angus & Logan, Montreal.
- 203 Samples of Manilla Bolt-Rope, Twine, &c. Taschereau, Onslow & Ryan, Quebec.
- 204 Set Silver and Brass Plated Harness. W. McCulloch, Brockville, C. W.
- 205 Safes and Safe Locks. Kershaw & Edwards, Montreal.
- 206 Express Waggon and Baker's Waggon. W. Perry, Montreal.
- 207 Collection of Photographs, &c. N. J. Mitchell, Montreal.
- 208 Britannia-Metal Spoons, Tin Ware, &c. T. Davidson, Montreal.
- 209 Specimen of Tatting. Miss Annesley, Montreal.
- 210 Four Marble Busts of "The Seasons," (original), and Marble Chimney Piece. J. Mavor, Montreal.
- 211 Specimens of Leather, Tallow, &c. Wm. Dickson & Son, Richmond, C. E.
- 212 Pair of Blankets, Etoffe, &c. John Doig, Lachute.
- 213 Pair Blankets, Flannel, Home-made Bread, &c. J. McGregor, St. Andrews.
- 214 Blankets. Edward Jones, St. Andrews.
- 215 Whitty's Solid-eye Mining Pick. Phillip Whitty, Quebec.
- 216 One Barrel White Wheat Flour. George Wheeler, Uxbridge, Ontario.
- 217 Hemp Rope, Manilla Rope, &c. James Coyle, Montreal.
- 218 One Covered Carriage. Treffley Goyette, Montreal.
- 219 Case of Stuffed Birds of Canada. J. P. Cowan, M.D., Montreal.
- 220 Collection of Carriages and Waggons. E. D. Gingras & Co., Quebec.
- 221 Etoffe du Pays, Flannel, &c. Edward Cavan, Rivière du Loup.
- 222 Model Steam Engine. E. Brazeau, Montreal.
- 223 Painting in Oil (by an Amateur). C. E. Gagnon, Montreal.
- 224 Specimens of Quilts in Patchwork Calico. Mrs. S. E. Molson, Petite Côte.
- 225 Collection of Brandies. Jules Fournier, Montreal.
- 226 White Flannel, &c. O. Brousseau, Laprairie.
- 227 Etoffe du Pays, Flannel, &c. F. X. Boqueau, St. Philippe.
- 228 Pair Woollen Tweed Blankets. Felix Brunet, St. Genevieve.
- 229 Etoffe du Pays. E. Bouchard, Laprairie.
- 230 Etoffe du Pays. Joseph Meloche.
- 231 Cooking, Albanian, and Fancy Stoves. John Findlay, Chambly.
- 232 Coal-Oil Cooking Stove (three sizes). R. Kerr, Montreal. [Montreal.]
- 233 Specimen of Illuminated Penmanship, "The Lord's Prayer." Alfred Sandham, [Toronto].
- 234 Collection of Insects and Frogs. C. Foley, Montreal. [Toronto].
- 235 Set of Double Harness, Horse Collars, Composition Horse, &c. R. Malcolm.
- 236 Embroidery in Muslin and Smoking Cap. Mrs. N. Limoges, Montreal. [Toronto].
- 237 Organs, Melodeons, Specimens of Carving, Fancy Sawing, &c. R. S. Williams.
- 238 Water Meter, and Model of Safety Runner to prevent sidewise sliding of winter vehicles on ice or snow. N. Aubin, Belœil.
- 239 Specimens of Penmanship, in frame, &c. Bryant, Stratton & Co., Montreal.
- 240 Oil Painting (Market View from River). Wm. Raphael, Montreal.
- 241 Six Transparent Window Shades. J. F. Stoneham, Montreal.
- 242 Perfumery, Chemicals, &c. J. A. Harte, Montreal.
- 243 Specimens of Curled Hair. P. & E. Wisdom, Hochelaga, ville.
- 244 Specimens of Fancy Frames for small pictures. Miss Edith Hemming, Drummond-
- 245 Patent Beehive. Samuel Norris, Milton, E. T.
- 246 One Knitted Quilt. Mrs. Bigelow, Montreal.

- 247 Patent Well Pump. C. Parham, & Co., Beauharnois.
- 248 Specimens of Bookbinding. Robert Miller, Montreal.
- 249 Victoria Phaeton, Waggonette, Sleigh, &c. Phrayne & Cote, Montreal.
- 250 Specimens of Wood Engraving, &c. J. H. Walker, Montreal.
- 251 Embroidery in Muslin. Mrs. Thompson, Montreal.
- 252 Photographic Scenes and Studies (Canada). A. Henderson, Montreal.
- 253 Water-Color Drawings, (Canadian Scenery). James Duncan, Montreal.
- 254 Collection of Brushmaker's Work. John Boyd, Montreal.
- 255 One Iron Pump. John Martin, Montreal.
- 256 Set of Croquet, Lawn Billiards, Wood Turning. Thos. Miller, Toronto.
- 258 An Atmospheric Bell. W. Sweet, Montreal.
- 259 Collection of Office Furniture, &c. D. & J. Tees, Montreal. (*See Adv.*, p. 63.)
- 260 Unbleached Cotton Yarn and Seamless Bags. Jos. Wright & Son, Dundas, U.W.
- 261 Three Piano-Fortes. T. D. Hood, Montreal.
- 262 Cooking Range, Cast Iron Railings and Posts. Rogers & King, Montreal.
- 263 Specimens of Paper Bags. T. Keevil, Montreal. (*See Advertisement*, p. 63.)
- 264 Samples of Liqueurs and Bitters. A. M. F. Gianelli, Montreal.
- 265 Gentlemen's Boots and Shoes. W. Douglass, Montreal.
- 266 Specimens of Lithographic and Copper Plate Engravings, &c. Burland, Lafreicain
- 267 Specimens of Magnetic Iron Ore. T. Watson, Montreal. [*& Co.*, Montreal.]
- 268 Woollen Stockings, Socks, Gloves, &c. S. B. Lawford, Sherbrooke.
- 269 3 Models of Gates. Richard Lewis, Melbourne, C. E.
- 270 Etoffe du Pays, Flannel Shawls, &c. S. Bisette, St. Mathias.
- 271 One Bird Cage. C. N. Peloquin, St. Jules.
- 272 Model of Double Gate. Richard Lewis, Melbourne, C. E. [Huntingdon.
- 273 Counterpane, Woollen Socks, Fancy Work in Hair, &c. Miss Sarah M. Wallis,
- 274 Etoffe du Pays. Léon LeGault, Pointe Claire.
- 275 Railway, Shp and Boot Spikes. R. Millard & Co., Montreal.
- 276 Sofa Cushion embroidered with Bead work. Miss Angelda Morier, St. Bruneau.
- 277 Patent Enamelled Leather. F. DePatti, Montreal.
- 278 Plated Chandelier and Specimens of Brass work. E. Chanteloupe, Montreal.
- 279 3 Carriages. Dwyer & Tolland, Montreal.
- 280 Embroidered Petticoat and Child's Robe. Madame Louis Dumas, Montreal.
- 281 Woollen Flannel, Counterpane, &c. A. Burwash, St. Andrews.
- 282 Corn Meal, Oatmeal &c., Dougal Graham, Ormstown.
- 283 Etoffe du Pays. W. Gordon, East Settlement..
- 284 Flannel and Etoffe du Pays. F. Monette, Pointe de Trembles.
- 285 Quilt in Patchwork Calico. J. Carruthers, St. Clement.
- 286 Stained Glass, &c. J. W. Bell, Montreal.
- 287 Wax Fruit, Flowers, &c. Mrs. J. M. Bell, Montreal.
- 288 Patch Work Coverlid, Fancy Needlework. L. Lancelotte, St. Aimé.
- 289 Samples Hard Soap. Christie & Bellis, Hochelaga.
- 290 Pair Railway Car Wheels. J. Macdougall & Co., Montreal.
- 291 Embroidery in Wool. Miss A. Derome.
- 292 Case of Feather Flowers, Ladies' Bonnets, &c. Price & Foiet, Montreal.
- 293 Woollen White Flannel. — Walbright, St. Andrews.
- 294 Spanish Mahogany What Not, Wash Stand, &c. T. Bates, Montreal.
- 295 Specimens of Embroidery. Demoiselle Réne Cotret, Montreal.
- 296 Chenille Shawl. Miss Sedley, Montreal.
- 297 Specimen Book of Printing Types. C. T. Palsgrave, Montreal.
- 298 3 Cases Stuffed Birds, &c. W. Hunter, Montreal.
- 299 1 Case Artificial Teeth. Dr. Nelson Edwards, Montreal.

- 300 Specimen of Gold, worked on Silk. Miss Bower, Montreal.
- 301 Medley Picture. Mrs. M. Simpson, Montreal.
- 302 Woollen Shawl, &c. E. Holden, St. Luc.
- 303 Three Oil Paintings. Mrs. Cook, Montreal.
- 304 Paper and Envelopes. A. Buntin, & Co., Montreal.
- 305 Collection of Cut Nails and Wrought Iron. M. Holland & Son, Montreal.
- 306 Buckwheat Flower. R. Frazer, Fontenoy.
- 307 Specimens of Hodge's Patent Peat Fuel. Jas. Hodges, Bulstrode, Arthabaska.
- 308 Collection of Harnesses. J. & R. Irvin, Montreal.
- 309 Carriage Spokes, Fellos, &c. McKinley Saunders, St. Catharines.
- 310 One Carriage for two Horses, and Sleigh. F. X. Roy, Montreal.
- 311 One Wrought-Iron Mirror Frame, &c. Wm. Midford, Ottawa.
- 312 Screw Jacks, Copying Press, &c. Thomas Abel, Montreal.
- 313 Hall Stove, Coal-Oil Stoves, and Refrigerator. C. Ryan, Montreal.
- 314 Case of Augers, Bits, and Pump Augers. F. Gilmore, Cote St. Paul.
- 315 Collection of Sea Flowers, in frame. Miss E. J. Childs, Montreal.
- 316 One Mercurial Steam Gauge. W. L. Kinmond, agent, Montreal.
- 317 One Quilt in Crochet Work. Miss Rodden, Montreal.
- 318 One Wringing Machine. James Myers, Toronto.
- 319 One Case Men's Stogas (Boots). Mathewson & Co., Montreal.
- 320 Collection of Table Legs, Alley Balls and Pins, &c; also Model of a Man for Artist Study. Jas. McGauvran, Montreal.
- 321 Specimen of Penmanship and Drawing in Ink. J. P. Ashton, Montreal.
- 322 Specimen of Lead. Gaspé Lead Mining Co., Montreal.
- 323 Specimen of Work in Wood. Mlle. Frechette.
- 324 Two Indians (Chick and Squaw), Specimens of Embroidery, &c. Mrs. Frances McKay, Montreal.
- 325 Specimen of Embroidery in Beads on Parasol, Silk, &c. Miss Adolphus Hartt, Montreal.
- 326 Collection of Ladies' and Gentlemen's Boots, &c. Chas. Tonville, Montreal.
- 327 An Improved Mechanical Fire-Alarm. C. Dion, Montreal.
- 328 One Arrow-pattern Sash, &c. N. Grenier.
- 329 Colored Flannel, Etoffe du Pays, &c. J. B. Bouchard, St. Athanase.
- 330 Pair Woollen Blankets. James Allan, Pointe aux Trembles.
- 331 Collection of Leather, &c. N. Valois, Montreal.
- 332 Specimen of Embroidery in Muslin. Miss Louise McDonnell, Port Lewis.
- 333 One Soap-Stone Stove. V. B. DesRochers, agent, Parkinsville, Vt., U. S.
- 334 One Harmonium and Square Miniature Piano. Labelle & Rodier, Montreal.
- 335 Sides of Buff Upper Leather, &c. F. Lindley, Montreal.
- 336 Coverlid, Shawl, Etoffe du Pays, &c. T. Robidoux, St. Philippe.
- 337 Farmers' Wreath, and Shell-work Basket. Miss E. M. Hervey, agent.
- 338 Assortment of Confectionery, Jams, &c. O. D. Miller & Co., Montreal.
- 339 Calico Patchwork Quilt. Mrs. J. McCree, Dundee.
- 340 Parian Marble Vases, Statuette, &c. J. Watson & Co., Montreal.
- 341 Landscape (Painting.) W. L. Kinmond, Montreal.
- 342 Collection of Stoves, Coppersmiths' Work, &c. J. G. Beard & Co., Montreal.
- 343 Three Hand Bellows. F. Raymond, Montreal.
- 344 Marble Sun-dial on Corinthian Pillar, and Flower Stand. L. Menard, Montreal.
- 345 Improved Grecian Caoutchouc Oil Polish. Benedict & Wightman, Philadelphia, U.S.
- 346 Specimen of Tatting. Mrs. W. D. Smith, Montreal.
- 347 One Silk Fire Screen In Frame. Mrs. W. Weir, Montreal.
- 348 Universal Clothes Wringer. J. F. Gladstone, Montreal.

- 349 Picture in Berlin Wool, "Moses Receiving the Commandments." Mrs. A. Hart,
 350 One Bushel Coffee. F. X. Beaudry, Montreal. [Montreal.]
 351 One Calico Patchwork Quilt. Margaret Desmairais.
 352 Six pieces of Embroidery. A. A. Dufort, St. Genevieve.
 353 Two Iron Coffins. Richard Seale, Montreal.
 354 Composition Roofing. J. L. Bangs & Co., Montreal.
 355 Ornamental Church Glazing. H. Millan, do
 356 Samples of Square, Bevelled, and Moulded, Bricks. Bulmer & Shepard, Montreal.
 357 Patchwork Calico Quilt, Berlin Wool Sofa Cushion. Mrs. Irwin, Hemmingsford.
 358 Specimens of Stained Glass, Memorial Window for Church of St. James the
 Apostle. J. C. Spence, Montreal.
 359 Ladies and Gentlemen's Furs. M. Mahler, Montreal.
 360 Three Jars Tomato and Peach Preserves. Mrs. L. O. Thayer, Montreal.
 361 Two cases of Artificial Eyes and Surgeon's Eye Instruments. Dr. L. O. Thayer,
 Montreal. (See Advertisement, page 64.)
 362 Specimen of Embroidery in Wool, Ottoman, &c. Malvina Berthouin, Montreal.
 363 Box made of small pieces of Wood. L. Gagnon, St. Lin.
 364 Hand and Pressed Turf, Clay and Shell, Marl, &c. R. Dillon, Longue Point.
 365 Model of St. Patrick's Church, in Wood. H. Johnson, Montreal.
 366 Three Bonnets in Glass Case. Mrs. Bains, Montreal.
 367 Vinegar. M. Lefebvre, Montreal.
 368 Dressed Burkskins, Gloves, Mitts, &c. J. Dewitt, Montreal.
 369 One Canada Robe, Dressed Cowskin, &c. A. Beaune, Montreal.
 370 Barrel of Pine Pitch Roofing Composition, Northern Pitch, &c. J. B. Cowan,
 Montreal. (See Advertisement, page 63.)
 371 Specimen of Embroidery in Muslin. Miss C. Guilbeault, Montreal.
 372 Quilt Embroidered on Cloth in Wool. Mrs. Graham, Montreal.
 373 Six Models of Life Boats, Steamboats and Ocean Steamers. Jasper Allo, Montreal.
 374 One Patchwork Quilt in Cloth. B. McGuire, Montreal.
 375 One dozen Leather Collars, Indian, &c. Eusébe Lauzon, Côte des Neiges.
 376 Machine for cutting Lining Hoops for Flour Barrels. J. Desrue, Montreal.
 377 One Grecian Oil Painting and Crayon Drawing. Miss Burroughs, Montreal.
 378 Three Moss Shell-Baskets and Case of Shells. Mrs. McDonald, Montreal.
 379 Two dozen Brooms. Nelson & Wood, Montreal.
 380 Three Model Steam Tugs. P. G. Waters, Montreal.
 381 Assortment of Ground Spices, &c. S. H. & A. E. Ewing, Montreal.
 382 New Cast Iron Radiator. Thomas McKenna, Montreal.
 383 Specimen of Plain Sewing by Machine. Mrs. J. B. Ferguson, Montreal.
 384 One Knitted Counterpane worked by a Lady 66 years of age. Jas. Norris, Montreal
 385 One Woollen Night-Cap, Cross-Barred Flannei, &c. G. Magneau.
 386 Collection of Cooking and Double Stoves, Founders' Castings, &c. Wm.
 Rodden & Co., Montreal.
 387 One Woollen Blanket. Mrs. Amable Campeau, Rigaud.
 Catalogue of the Provincial Agricultural and Industrial Exhibition at Montreal,
 September, 1865. John M. Gatehouse, Montreal.

W. DALTON,
Bookseller, Stationer, and News Dealer,
CORNER CRAIG & ST. LAWRENCE STREETS,
MONTREAL.

A choice assortment of Stationery and all the popular Literature of the day for sale at the lowest prices. Postage Stamps for sale. Fancy Goods, Newspapers, Periodicals, School Materials, Magazines, Novels, Stationery.

Mackinnon's Fancy Biscuits

N. J.

B

T

1865 PROVINCIAL EXHIBITION. 1865

BAIRD & CRAWFORD,

WHOLESALE AND RETAIL

TEA DEALERS, GROCERS,

Wine and Spirit Merchants,

AND

**FOREIGN WAREHOUSEMEN,
MONTREAL.**

BAIRD & CRAWFORD'S stock consists of the choicest Groceries and Wines to be found in the City, having been selected with unusual care for themselves, at FOREIGN and HOME Markets, viz :

MacKinnon's Fancy Biscuits.

Teas,
Coffees,
Sugars,
Rice,
Barley,
Oatmeal,
Hams,
Bacon,
Tongues,
Stilton Cheese,
Bologna Sausages,

New Fruits,
Spices,
Chocolate,
Cocoa,
Pickles,
Sauces,
Potted Meats,
Truffles,
Mushrooms,
Green Peas,
Sardines,

Brandy,
Port,
Sherry,
Clare',
Moselle,
Champagne,
Rum,
Gin,
"Allan's" Old Rye,
Ginger Wine,
Dublin Porter,
Bass's Ale.

Dow's Ale and Porter at Brewery Prices.

**FINNAN HADDIES!
BALTIMORE OYSTERS!!**

N. B.—All Parcels of Goods, (excepting Sugar), amounting in value to \$20 and upwards, sent

CARRIAGE FREE,

TO ANY RAILROAD STATION.

By this liberal arrangement, we extend all the advantages of the

Montreal and other Markets

To those Living at a Distance,

By enabling them to purchase as advantageously as though they resided in the city.

BAIRD & CRAWFORD,

123 Great St. James St.

1865 PROVINCIAL EXHIBITION. 1865.

W. B. BOWIE & CO.,

IMPORTERS OF

STAPLE AND FANCY DRY GOODS,

Would invite the special attention of Exhibitors and Visitors to the Exhibition, to their splendid and newly imported Stock of Fall and Winter DRY GOODS:

Special Inducements offered during Exhibition Week.

433 NOTRE DAME ST., opposite Recollet Church.

Montreal, September, 1865.

**J. P. & T. A. DAWES,
BREWERS,
LACHINE, CANADA EAST.**

MONTREAL OFFICE AND VAULTS, 61 Great St. James Street,

Have on hand a large stock of Ales and Porter of the best qualities, both in wood and bottle, at the following prices:—

Mild Ale.....	qrts 2s 9d p. doz.	1s 0d p. gal.	No. 1 Strong Ale, qrts 5s 0d p. doz.	1s 4d p. gal.
Pale Ale.....	" 3s 6d "	1s 1d "	Porter.....	4s 6d " 1s 2d "
India Pale Ale....	" 4s 6d "	1s 2d "		

FENNER'S CIDER, in bot. , always in stock. Price:

Pints, 6s 3d per dozen. Quarts, 12s 0d per dozen. Per gallon, 2s 6d per dozen:

Orders promptly attended to.

J. P. & T. A. DAWES,

Office, 61 Great St. James St. Montreal.



GALBRAITH & BROWN,

Tailors and Clothiers,

Mechanics' Institute Building:

GREAT ST. JAMES ST.,

Have constantly on hand a new and well selected Stock of Goods, suitable for Gentlemen's wear, and are prepared to supply all orders at lowest possible prices.

LIFE ASSURANCE.

ESTABLISHED 1825.

SCOTTISH PROVINCIAL ASSURANCE CO.,

INCORPORATED BY ACT OF PARLIAMENT.

Capital, One Million Stg. - - Invested in Canada, \$500,000.

CANADA HEAD OFFICE, MONTREAL.

DIRECTORS:

Honorable JOHN YOUNG, Chairman. | Honorable CHAS. WILSON, M. L. C.
HUGH TAYLOR, Esq., Advocate. | WILLIAM SACHE, Esq., Banker.

Secretary—A. DAVIDSON PARKER.

VISITORS TO THE EXHIBITION

Are respectfully invited to inspect the beautiful collection of

REAL & IMITATION LACES,

Embroideries, Muslin Goods, Ladies' Underclothing, Hair Nets, Head Dresses, Berthes, Capes, Garibaldis, &c., &c.,
Being the **LARGEST, CHEAPEST, and BEST STOCK** of the above in Canada, including the **LATEST NOVELTIES** in this line, at

Established 1849.

J. PARKIN'S,
250 (late 168) Notre Dame Street.

ESTABLISHED 1918.

SAVAGE & LYMAN,

CATHEDRAL BLOCK, NOTRE DAME STREET, MONTREAL,

Have constantly in stock a very Large Assortment of

GOLD & SILVER WATCHES,
JEWELLERY,

Of all kinds, and of the best Description and Latest Styles.

Electro-Plated Ware, Papier-Mache Ware, Marble, Mantel, and other Clocks,
Opera and Marine Glasses, Microscopes, and Barometers,

GOLD, STEEL, AND SILVER SPECTACLES,

Leather Bags & Dressing Cases for Ladies & Gentlemen.

SILVER TEA & COFFEE SETS,

Pitchers, Jugs, Cups, Goblets, Inkstands, Spoons, Forks, &c.,

OF THEIR OWN MANUFACTURE.

SAVAGE & LYMAN,
271 NOTRE DAME STREET, MONTREAL.

Singer's Celebrated Sewing Machines,

N.B.—The only place in Montreal where you can get a

GENUINE SINGER

Sewing Machine,

Is at No. 65 St. Sulpice Street, (opposite the French Cathedral.)

J. D. LAWLOR,
Agent.



CHARLES HEARN,

OPTICIAN,

242, Notre Dame Street, Montreal.

Spectacles, Eye Glasses, Microscopes, Telescopes, Opera and Marine Glasses, Barometers, Thermometers, Drawing Instruments, Scales, Rules, Surveying and Nautical Instruments, Optical and Philosophical Goods, in great variety.

Particular attention given to the adjustment of **SPECTACLES.**

Repairs promptly executed & on Reasonable Terms

GEORGE W. REED,**SLATE AND METAL ROOFER,**

And Dealer in Slate Mantels, Table Tops, Sawed Slate Slabs for Shelves, Fire Walls, &c., Manufacturer and Wholesale Dealer in Coal Hods, Coal Sifters, Slop Pails, and all description of Tinware.

541 Craig Street, Montreal, C. E.

MONTREAL LAST FACTORY

GEORGE W. REED,

No. 192 Ann Street, Griffintown,

Conducted by S. S. HALL,

Manufacturers of every style of Lasts, Boot Trees, Crimps, Stretchers, Cleaners, &c. Spokes and Hubs on hand and manufactured to order.

A. MOLINELLI,**Cabinetmaker and Upholsterer,**

89 St. Lawrence Main St., Montreal.

(Exhibitor of the Large Walnut Sideboard.)

Drawing, Dining and Bedroom Furniture made to order, from entirely new and original designs. Window Cornices, Glass Frames, and Fancy Inlaid Work of every Coloured Wood.

All work Warranted to be of superior quality.

Montreal Brass Foundry.**ROBERT MITCHELL & Co.,**

Plumbers, Gas Fitters, Copper Smiths, Steam Fitters,

BRASS FOUNDERS AND FINISHERS,

MANUFACTURERS & IMPORTERS OF GASALIERS, &C.

Importers of Malleable Iron Pipes & Fittings,

Manufacturers of GOLD'S Low Pressure Steam Heating Apparatus for Residences, Green Houses, &c.

AGENTS FOR

Harrison's European Range for Hotels and Families.

Corner of Craig and St. Peter Sts.,

MONTREAL.

ESTABLISHED 1859.

HENRY R. GRAY,

Dispensing & Family Chemist,

144 St. Lawrence Main Street,

MONTREAL.

Physicians' Prescriptions accurately compounded with carefully selected Drugs.

SOLE PROPRIETOR OF

GRAY'S WILD FLOWERS OF ERIN,

the celebrated Perfume for the Handkerchief.

WALTER MARRIAGE,

30 Lemoine Street,

MONTREAL.

—
SOLE AGENT FOR

Walls & Drysdale's Mustard, Blue, and Chicory. Harper Twelvetees' Soap Powders, Ink, Black Lead, &c.

Wilton's Baking, Egg, and Custard Powders. Scott's Magic Liquid Blue.

IMPORTER OF

J. S. Fry & Son's Cocos and Chocolate.

Reckitt & Son's Diamond Black Lead, &c.

Bowden's Fancy Soaps.

Lazenby's Sauces and Pickles.

The adapted Manufact Plain and eleven S Machines all in the short not

Country (

Montre

BOOK AND JOB PRINTING.

Book Work,
Pamphlets,
Periodicals,
Prices Current,
Prospectuses,
Circulars,

Bank Forms,
Insurance Forms,
Railway Forms,
Legal Forms,
Bills of Lading,
Way Bills,

Receipts,
Catalogues,
Cards,
Funeral Letters,
Hand Bills,
Posting Bills.

And every other description of PLAIN and FANCY PRINTING executed with the utmost despatch and at the

VERY LOWEST PRICES.

BLANK ACCOUNT BOOKS, Ledgers, Journals, Cash Books, Day Books,

OF THE FOLLOWING, AND ALL OTHER SIZES, MADE TO ORDER:

Imperial, 14½ × 21 inch.	Royal, 11 × 18 inch.	Demy, 9½ × 14½ inch.
Super Royal, 12 × 13 inch.	Medium, 10½ × 16½ inch.	Foolscap, 7½ × 12½ inch.

BOUND IN CALF, (with or without Russia Bands,) VELLUM, OR BASK,

RULING TO ANY PATTERN REQUIRED.
BOOKS PAGED BY MACHINERY.

Indices Bound with the Books, or furnished loose, as may be required.

Bill Books, Letter Books, (500 and 1000 pages,) Invoice Books, Guard Books, Policy Books, Account Current Books, Sales Books, Contract Books, Bankers' Pass Books, Merchants' Memorandum Books, &c., &c., made to any Pattern.

BOOKBINDING.—Owing to the difficulty of procuring first class Bookbinders, and the high wages they demand not being warranted by the amount of support accorded, together with the heavy duty (20 per cent. on binding material, while the bound book is admitted free, the undersigned is under the necessity of declining to execute further orders in this branch, and will heresafter confine himself to binding connected with his own business, and the manufacture of Blank Account Books.

ENLARGEMENT OF PREMISES.

The undersigned has greatly enlarged, and otherwise improved his premises, which he has adapted, in every respect, for carrying on an extensive Book and Job Printing and Blank Book Manufacturing business. The Compositors' Rooms are well stocked with a large variety of Plain and Fancy Types, embracing the newest designs. The Establishment is furnished with eleven Steam Printing Presses, nine Steam Smashing, Sawing, Cutting, Stamping and Holsting Machines, six Hydraulic and Hand Presses, together with Ruling, Backing and Paging Machines, all in thorough working order, which enables him to turn out large quantities of work at very short notice. 140 persons are employed in this Establishment.

Country Orders for Printing and Blank Books carefully attended to, and work dispatched by the safest and cheapest modes of conveyance.

JOHN LOVELL,

BOOK AND JOB PRINTER, AND BLANK BOOK MANUFACTURER.

Montreal, September, 1866.

E. E. GILBERT,**Canada Engine Works,**

Is prepared to execute orders for

OIL-BORING AND PUMPING MACHINERY,
Portable and Stationary Engines,
 Boiler-Work, Smith-Work, and Heavy Furnace Forgings, Hoisting
 Machines, Hydraulic Presses, etc.

ALSO ON HAND several SECOND HAND ENGINES and BOILERS, for sale
 low.

E. E. GILBERT,**CANADA ENGINE WORKS,**

OFFICE, 738 ST. JOSEPH, STREET WEST,
MONTREAL.

PORTABLE ENGINES

Constantly on hand

OF

12 Horse Power.....	Price, \$ 850
15 do do	do 1000
22 do do	do 1500

Each engine is on a strong cast iron frame, firmly attached to a

LOCOMOTIVE BOILER, WITH LARGE FURNACE,

And water space bottom—the whole firmly secured by cast iron brackets to wooden bed pieces.

Each engine is supplied with—

**An Iron Chimney—Fly Wheel—Driving Pulley—Feed
 Heater—Excellent Governor—Three Gauge Cocks—
 Glass Water Gauge—Dial Steam Gauge—Feed
 Pump with Rubber Suction Hose, etc.**

In fact, everything requisite to put an engine in complete working order, ready to be placed in position and set at work without an hour's delay or a dollar's expense.

To avoid all risk of imperfections or oversight in workmanship, each engine is run several hours with steam before being permitted to leave the shop.

THE COLONIAL LIFE ASSURANCE CO'Y.

HEAD OFFICES:
EDINBURGH AND MONTREAL.

Manager for Canada,..... W. M. RAMSAY.

Inspector of Agencies..... RICHARD BULL.

CAPITAL,..... ONE MILLION POUNDS, STERLING.

REVENUE..... £150,000 Stg.

ACCUMULATED FUND.... £560,000 Stg.

The attention of the public is directed to the Act recently passed by the Legislature, under which Policies of Assurance in favor of Wives or Children, or assigned to them, cannot be seized by Creditors of the Assured. Policies of Assurance now, therefore, form a perfectly sure provision for Widows or Children.

EXAMPLES OF PREMIUMS TO SECURE £100 STERLING, OR \$486.67, PAYABLE AT DEATH:			
Age,—25 with profits	\$10.52	Age,—25 without profits	\$ 9.65
30	\$12.00	30	\$10.09
35	\$13.76	35	\$12.61
40	\$15.01	40	\$14.60
45	\$18.80	45	\$17.21
50	\$22.63	50	\$20.75

Every information as to Life Assurance, and copies of the Act above referred to, will be given by the Manager or any of the Agents.

These may be paid half-yearly or quarterly.

Montreal, 21st September, 1895.

W. M. RAMSAY, Manager for Canada,
47 Great St. James Street.

LIFE AND GUARANTEE ASSURANCE.

SPECIAL NOTICE.

THE EUROPEAN ASSURANCE SOCIETY.

EMPOWERED BY ACTS OF BRITISH AND CANADIAN PARLIAMENTS.

CAPITAL, - ONE MILLION STERLING.

Of which £750,000 Sterling is Subscribed for by over Twelve Hundred Shareholders.

ANNUAL PREMIUM REVENUE exceeds £300,000 STERLING.

Head Office in Canada--71 Gt. St. James St., Montreal.

DIRECTORS:

HUGH ALLAN, Esq., Montreal.
CHAS. JNO. BRYDGES, Esq., Montreal.
ROBT. CASSELS, Esq., Toronto.

HENRY THOMAS, Esq., Montreal, *Chairman*.

THOMAS CRAMP, Esq., Montreal.
WILLIAM WORKMAN, Esq., Montreal.
Hon. CHAS. ALLEYN, Q.C., M.P.P., Quebec

THE Directors have much pleasure in drawing the notice of the public to the recent Act passed by the Legislature providing for the Security of Policies of Assurance to WIDOWS AND CHILDREN from the seizure of Creditors, and would direct the attention of intending Assurers to the eminent advantages afforded by this Society for making provision for their Wives and Families.

A person may Assure his Life with participation in Profits, and obtain a Bond of Security from this Society, available for either himself—or his Son—or Brother, at a Premium in most cases less than that charged by other first-class Offices for LIFE ASSURANCE ALONE.

Full information will be given at the Head Office, Montreal, or by any of the Society's Agents.

EDWARD RAWLINGS, Secretary.

J. & W. HILTON,
Cabinet-Makers and Upholsterers, Carvers and Gilders,
 IMPORTERS AND SILVERERS OF PLATE GLASS;

—ALSO,—

Importers of Brocatelles, De Laines, Reps, Pekin and Reptara Cloths, Embroidered Reps and Terry Curtains, Nottingham Lace Curtains, Embroidered Piano and Table Covers, Gimp, and every description of Curtain Trimmings and Upholsterers' Goods.

Rosewood, Mahogany and Walnut Veneers and Mouldings, Gilt Mouldings and Cornices, Mantel and Pier Glasses.

WAREHOUSES: 61 GREAT ST. JAMES STREET. FACTORY: 26, 28, & 30 ST. GERMAIN ST.,

MONTREAL.

CHARLEY'S TOILET ROOM,
 43 St. John Street,
 Between Notre Dame and Great St. James Sts.,
MONTREAL.

GENTLEMEN'S TOILET.

HAIR CUTTING VERY CAREFULLY ATTENDED TO,
 SHAMPOOING.

Particular attention to Children's Hair Cutting. A clean brush is used each time of dressing the hair.

RAZORS GROUND AND SET.

PROVINCIAL EXHIBITION.

INVITATION TO VISITORS.

Merchants from Upper Canada, &c., &c., will find time well spent by allotting half an hour to inspect the IMMENSE IMPORTATION now exhibiting at

T H E M A R T ,

JOHN A. RAFTER'S,

31 ST. LAWRENCE MAIN STREET,

There are several lines fully 15 per cent. under the usual wholesale market, viz:

**In White and Coloured Blankets, Rich Fancy Flannels, Cloths,
 Seal Skins, Tweeds, French Merinos, Delaines, Prints,
 Steam Looms and Factory Cottons, &c.**

Ladies out shopping can purchase their Winter Merinos for 2s. 10d.; Splendid Delaines at 9d.; Poplinettes 1s. 2d.; Blankets, \$3½ the pair, and all of equally good value.

Gentlemen's first class style of Pants made to order, \$2½, \$3½, \$4½, and \$5½ the pair.

Full Suits of Halifax, \$12 to \$14. Full Suits Tweed or Black Cloth, \$14 to \$20. The New British Columbia Suits, \$20 to \$25.

ONLY ONE PRICE ASKED.

D. & J. TEES,
Cabinetmakers and Undertakers,
 166 and 160 GREAT, ST. JAMES ST., Factory, St. Gabriel Lock,
MONTREAL.

Funerals furnished in the best possible style. First-class Hearses, Crape, Gloves, &c. Patent Metallic, Mahogany, and other Coffins; Marble Tombstones. Patent Coolers supplied, when necessary.
 Stores and Offices fitted up on the shortest notice. Office Desks and Furniture Chamber Sets in variety.

JAMES B. COWAN,
ROOFER,
 AND MANUFACTURER OF
IMPERIAL VARNISH, PITCH,
COAL TAR,
ROOFING CEMENT,
 Prepared Felt, &c.
 Office, 7 St. Maurice St.;
 WORKS: St. Gabriel Square,
MONTREAL.

HIGHT
 Has a **GRIDIRON** in Montreal.
 COME AND SEE IT,
AND EAT AND DRINK,
 CORNER OF
 Place d'Armes and Craig St.

CANADA BRASS WORKS.

COCKBURN, BROWN & NAPIER,
Brass Founders and Finishers,

MANUFACTURERS OF
 Plumbers', Gas Fitters', Engineers', and Steam Fitters' Brass Work,
 Gasaliers, Pendants and Brackets;

AND IMPORTERS OF
GLASS SHADES FOR GASALIERS.
 Office, Warehouse, and Works: Corner Craig and St. Antoine St., Montreal.

The Celebrated **T. K. Bags.**

THOMAS
PAPER BAG
 29 & 30 Place d'Armes Chambers



KEEVIL,
 Manufacturer,
MONTREAL.

PRICE PER THOUSAND:

Manilla— $\frac{1}{2}$ lbs. Bags,	\$0.90	Manilla—3 lbs. Bags,	\$1.75
1 " "	1.10	4 " "	2.00
2 " "	1.35	5 " "	2.75

Any Size Bag can be made at prices **EQUALLY LOW.**

Dr. L. O. THAYER,
OCULIST   **Licensed Physician**
 AND **SURGEON**
 OF
AURIST, *Mc Gill College University,*
MONTREAL.

CURES EFFECTED BY Dr. THAYER.

Case of Traumatic Cataract. Daniel Costello, lance corporal of the 47th Regiment, entirely blind from a blow of a rocket ball, completely cured and can see to read and shoot.—Joseph Lymor, employe of Mr. J. Scott, butcher, St. Ann's Market, stone blind from Amaurosis; can now see to read and write, and is quite cured.—W. Kilgellin, convergent squint, cured instantaneously by an easy operation; and D. Laframboise, Esq., deaf of both ears, being completely restored.

Consulting office, surgery, and residence, No. 235 Notre Dame St. Hours of attendance: 9 a.m. to 6 p.m.

"Home and Colonial Insurance Company Limited."

Authorized Capital:—Two Million Pounds Sterling.

SUBSCRIBED £1,000,000 STERLING.

CANADA BRANCH:

HEAD OFFICE, MONTREAL:—Nos. 13 and 15 Merchants' Exchange.

All kinds of Fire and Life Insurance effected at the lowest rates. Losses promptly and liberally adjusted without reference to England.

TAYLOR BROS., General Managers in Canada.

TAYLOR BROTHERS,
 Brokers and Commission Merchants.

 199

A. BRAHADI,
 FIRST PREMIUM
FUR ESTABLISHMENT,
 No. 199

NOTRE DAME STREET, MONTREAL.

Parties who may be desirous to purchase CHOICE FURS, are respectfully invited to call and examine the Extensive STOCK of

Ladies' and Gentlemen's Manufactured Furs.

A. B. was awarded four first class Medals at the Provincial Industrial Exhibition at the City of Montreal, in 1860, during the visit of H. R. H. the Prince of Wales.

CONTENTS.

	PAGE.
List of Officers for 1865	2
Classification of Exhibition	3
Programme for Week	4
Entries in Agricultural Department	5-46
Entries in Industrial Department.....	47-54

BUSINESS INDEX.

Liverpool and London and Globe Insurance Co.....	Cover, page	2
Gibb & Co.....	Merchant Tailors	4
Life Association of Scotland	“ “	2
C. W. Williams & Co	Sewing Machines	2
Dr. Colby's Anti-Costive and Tonic Pills.....	“ “	4
John Henry.....	Portrait Photographer	4
Baird & Crawford.....	Family Grocers	55
Savage & Lyman.....	Gold and Silver Watches, Jewellery, &c	57
Scottish Provincial Assurance Co.....		56
John Lovell.....	Book and Job Printer	59
J. Parkin.....	Laces, Embroideries, &c.	57
Charles Hearn.....	Optician	57
J. P. & T. A. Dawes.....	Brewers	56
E. E. Gilbert.....	Canada Engine Works	60
J. & W. Hilton.....	Cabinet-Makers and Upholsterers	62
European Assurance Co		61
Robert Mitchell & Co.....	Plumbers, Gasfitters, &c.	58
G. W. Reed.....	Slate & Metal Roofer	58
J. D. Lawlor.....	Sewing Machines	57
Galbraith & Brown.....	Merchant Tailors	56
W. B. Bowie & Co.....	Staple and Fancy Dry Goods	56
Colonial Life Assurance Co.....		61
Charley's Toilet Room.	Gentlemen's Toilet	62
D. & J. Tees	Cabinet-Makers and Undertakers	63
James B. Cowan.....	Roofing Cement, &c.	63
John A. Rafter.....	Dry Goods, Cloths, &c.	62
Dr. L. O. Thayer.....	Oculist and Aurist	64
Cockburn, Brown & Napier.....	Brass Founders and Finishers	63
A. Brahadi.....	Hatter and Furrier	64
W. Dalton.....	Stationer and Newsvendor	54
Hight.....	Gridiron	63
Thomas Keevil.....	Paper Bags	63
Walter Marriage	Cocoa, Chocolate, Fancy Soaps, Mustard, &c.	53
Henry R. Gray.....	Dispensing Chemist	58
A. Molinelli.....	Cabinet Maker, &c.	58
Home and Colonial Insurance Company Limited.....		64

GIBB & CO.,

ESTABLISHED 1773.

Merchant  **Tailors,**

AND

GENTLEMEN'S HABERDASHERS,

50 GREAT ST. JAMES STREET,
MONTREAL.

• **DR. COLBY'S**
ANTI-COSTIVE AND TONIC PILLS,
SUGAR COATED,

Present a most happy combination of therapeutical agents, uniting a mild but *certain cathartic*, with valuable *Tonic* and *Anodyne* properties, rendering them the most desirable Medicine for all classes possible.

Unlike any other advertised Medicine, they have received the unqualified approbation of almost every medical man to whom the formula has been submitted.

He has presented a happy combination of therapeutical agents, which is valuable as a cathartic and tonic. Having tried it myself, and knowing the ingredients, I can earnestly recommend it for its excellent qualities.

WINSLOW LEWIS, M.D.

We have prescribed them frequently, and believe they are worthy the character you claim for them. *Anti-costive and Anodyne*, at the same time imparting tone and vigor to the digestive organs.

J. C. BUTLER, M.D.
JOHN ERSKINE, M.D.

SOLD BY ALL DRUGGISTS.

J. F. HENRY & CO., MONTREAL,
Wholesale Agents.

S. J. FOSS & CO., SHERBROOKE,
Sole Proprietors.

JOHN HENRY,
Landscape and Portrait Photographer,
No. 1 BLEURY STREET,
MONTREAL.

Rates during the Exhibition Week for Carte Photographs, Vignettes, or otherwise, is \$3.00 per dozen, or forty for \$6.00.

Visitors to Montreal are respectfully invited to inspect this Studio previous to leaving the city.

See advertisement in Montreal Free Press

