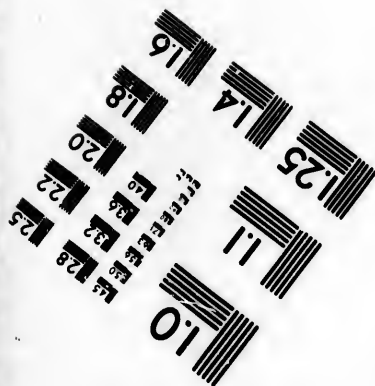
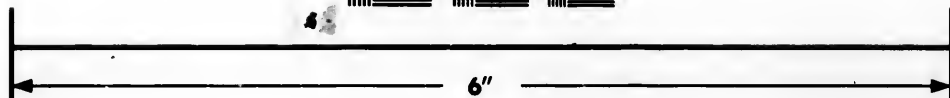
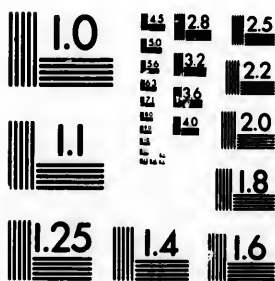


**IMAGE EVALUATION
TEST TARGET (MT-3)**



**Photographic
Sciences
Corporation**

23 WEST MAIN STREET
WEBSTER, N.Y. 14580
(716) 872-4503

Technical and Bibliographic Notes/Notes techniques et bibliographiques

The Institute has attempted to obtain the best original copy available for filming. Features of this copy which may be bibliographically unique, which may alter any of the images in the reproduction, or which may significantly change the usual method of filming, are checked below.

L'Institut a microfilmé le meilleur exemplaire qu'il lui a été possible de se procurer. Les détails de cet exemplaire qui sont peut-être uniques du point de vue bibliographique, qui peuvent modifier une image reproduite, ou qui peuvent exiger une modification dans la méthode normale de filmage sont indiqués ci-dessous.

- Coloured covers/
Couverture de couleur
- Covers damaged/
Couverture endommagée
- Covers restored and/or laminated/
Couverture restaurée et/ou pelliculée
- Cover title missing/
Le titre de couverture manque
- Coloured maps/
Cartes géographiques en couleur
- Coloured ink (i.e. other than blue or black)/
Encre de couleur (i.e. autre que bleue ou noire)
- Coloured plates and/or illustrations/
Planches et/ou illustrations en couleur
- Bound with other material/
Relié avec d'autres documents
- Tight binding may cause shadows or distortion along interior margin/
La reliure serrée peut causer de l'ombre ou de la distortion le long de la marge intérieure
- Blank leaves added during restoration may appear within the text. Whenever possible, these have been omitted from filming/
Il se peut que certaines pages blanches ajoutées lors d'une restauration apparaissent dans le texte, mais, lorsque cela était possible, ces pages n'ont pas été filmées.
- Additional comments:/
Commentaires supplémentaires:

- Coloured pages/
Pages de couleur
- Pages damaged/
Pages endommagées
- Pages restored and/or laminated/
Pages restaurées et/ou pelliculées
- Pages discoloured, stained or foxed/
Pages décolorées, tachetées ou piquées
- Pages detached/
Pages détachées
- Showthrough/
Transparence
- Quality of print varies/
Qualité inégale de l'impression
- Includes supplementary material/
Comprend du matériel supplémentaire
- Only edition available/
Seule édition disponible
- Pages wholly or partially obscured by errata slips, tissues, etc., have been refilmed to ensure the best possible image/
Les pages totalement ou partiellement obscurcies par un feuillet d'errata, une pelure, etc., ont été filmées à nouveau de façon à obtenir la meilleure image possible.

This item is filmed at the reduction ratio checked below/
Ce document est filmé au taux de réduction indiqué ci-dessous.

10X	14X	18X	22X	26X	30X
<input type="checkbox"/>	<input checked="" type="checkbox"/>	<input type="checkbox"/>	<input type="checkbox"/>	<input type="checkbox"/>	<input type="checkbox"/>
12X	16X	20X	24X	28X	32X

The copy filmed here has been reproduced thanks to the generosity of:

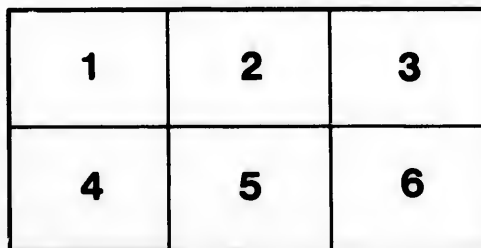
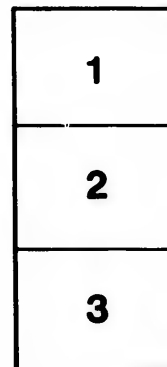
Library of the Public
Archives of Canada

The images appearing here are the best quality possible considering the condition and legibility of the original copy and in keeping with the filming contract specifications.

Original copies in printed paper covers are filmed beginning with the front cover and ending on the last page with a printed or illustrated impression, or the back cover when appropriate. All other original copies are filmed beginning on the first page with a printed or illustrated impression, and ending on the last page with a printed or illustrated impression.

The last recorded frame on each microfiche shall contain the symbol \rightarrow (meaning "CONTINUED"), or the symbol ∇ (meaning "END"), whichever applies.

Maps, plates, charts, etc., may be filmed at different reduction ratios. Those too large to be entirely included in one exposure are filmed beginning in the upper left hand corner, left to right and top to bottom, as many frames as required. The following diagrams illustrate the method:



L'exemplaire filmé fut reproduit grâce à la générosité de:

La bibliothèque des Archives
publiques du Canada

Les images suivantes ont été reproduites avec le plus grand soin, compte tenu de la condition et de la netteté de l'exemplaire filmé, et en conformité avec les conditions du contrat de filmage.

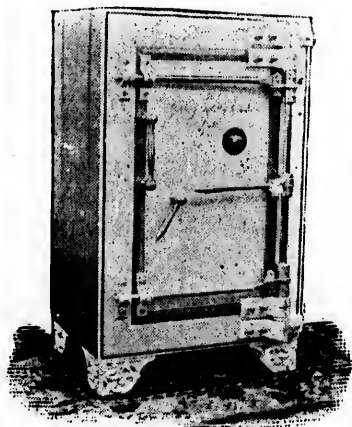
Les exemplaires originaux dont la couverture en papier est imprimée sont filmés en commençant par le premier plat et en terminant soit par la dernière page qui comporte une empreinte d'impression ou d'illustration, soit par le second plat, selon le cas. Tous les autres exemplaires originaux sont filmés en commençant par la première page qui comporte une empreinte d'impression ou d'illustration et en terminant par la dernière page qui comporte une telle empreinte.

Un des symboles suivants apparaîtra sur la dernière image de chaque microfiche, selon le cas: le symbole \rightarrow signifie "A SUIVRE", le symbole ∇ signifie "FIN".

Les cartes, planches, tableaux, etc., peuvent être filmés à des taux de réduction différents. Lorsque le document est trop grand pour être reproduit en un seul cliché, il est filmé à partir de l'angle supérieur gauche, de gauche à droite, et de haut en bas, en prenant le nombre d'images nécessaire. Les diagrammes suivants illustrent la méthode.

BANKER'S SAFES.

The
Goldie &
McCulloch
Co., Limited,
Ottawa,
Ont.



upby

Vol. 19, cat. 6.

BANKERS' SAFES.....

THE keeping of treasure has always been a perplexing problem to mankind. From the crude 'strong box' of years ago, to the modern safe has been a long stride the greater part of which has been covered in the last twenty years.

The object of this little booklet is to give you some idea of the wonderful progress that has been made in Safes, Vaults and Vault Doors, which we manufacture, designed especially to meet the requirements of Bankers. These Safes are made of the very best hardened five ply chrome steel and iron made by **The Chrome Steel Works of Brooklyn, New York**, and are all equipped with the very latest improvements, eccentric or crane hinges, lever bars, ball bearings, tongued and grooved doors packed with non-absorbing packing. All spindles have enlarged centres. The plates are all screwed separately from the inside with countersunk chrome steel screws. Safes can be made any desired thick-



THE BURGLAR WE ONCE
FEARED

Bankers' Safes

ness and can be fitted with double, triple or quadruple time locks.

For rich effect in artistic designs our safes are not surpassed. In the decorations, done on highly polished surfaces with intricate weavings of delicate hues, even the art critic finds beauty worthy of admiration. The deep warm reds and vermilions edged in bold relief with graceful patterns in gold and with a careful modulation of color from dark to light, give a dash of beauty not unlike marquetry work. Couple with this the massive construction of the Safe proper, with its ponderous weight of iron and steel and you have an extraordinary combination of modern mechanism and art surpassed to-day by no other line of manufacture. We shall be pleased to furnish prices on application.



THE BURGLAR WE FEAR
TO-DAY

The Goldie & McCulloch Co'y Limited,
Galt, Ontario.



Bankers' Safe No. 45

NO. 45 designs are handsomely decorated, well made, Fireproof Safes with Banker's Chests. Interior view is shown on next page.



No. 45 Safe

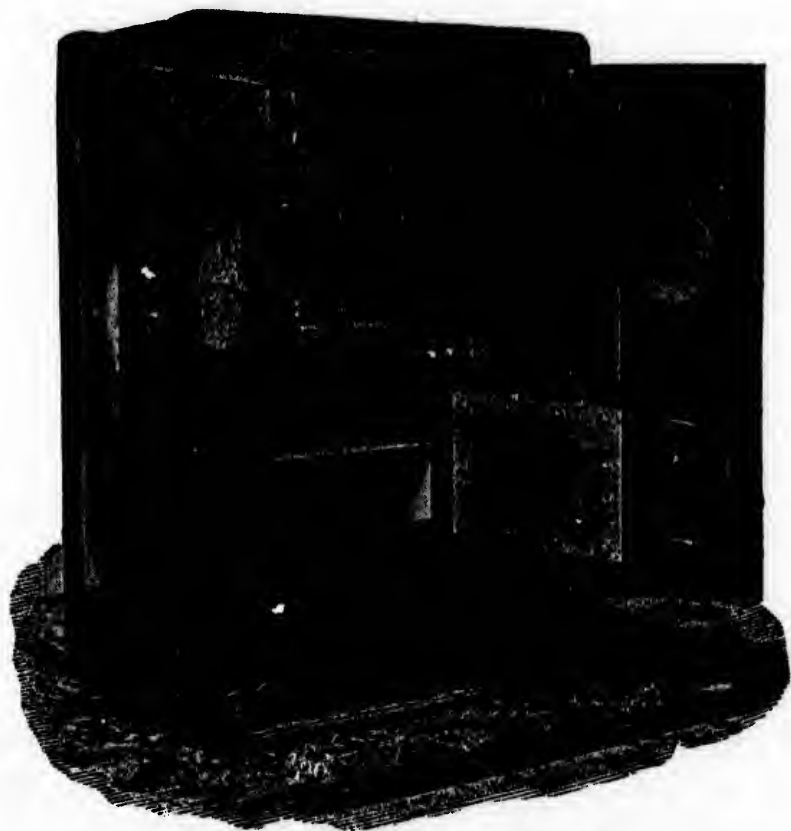
Interior View

THIS picture shows to good advantage the interior of our No. 45 safe. The book spacing may be arranged to suit purchaser. The bankers chest can be made any thickness or size desired and time locks may be fitted to same. This view shows two combination locks and one time lock. The chest door has lever bar and crane hinges, all polished and nickel plated. This safe is 6 ft. 2 inches high by 4 ft. 1 inch wide and 3 ft. $\frac{1}{2}$ inch deep.



The Goldie
& McCulloch
Co'y
Limited.
Galt, Ontario.

e
k
r.
ss
to
n
as
d
h



Interior View No. 45

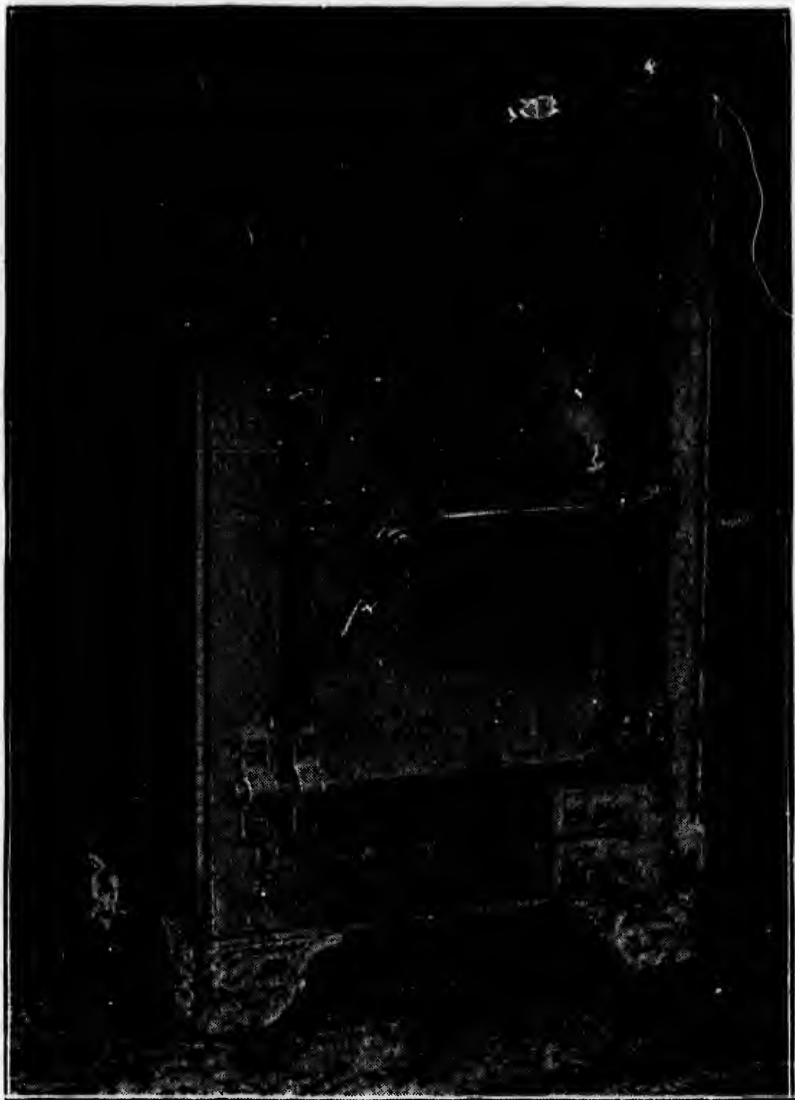
Bankers
Safe
No. 64

THESSE safes are made with either two or three inner compartments. They also have heavy barred doors and as with other safes have all bolts, bars and lock work highly polished and nickel plated. They are handsomely finished in aluminum and decorated in harmonizing tints, resulting in a most pleasing effect. Time locks may be fitted if desired.



The Goldie
& McCulloch
Co'y,
Limited,
Galt Ontario

or
so
th
rk
re
r-
st
if



Banker's Safe No. 64



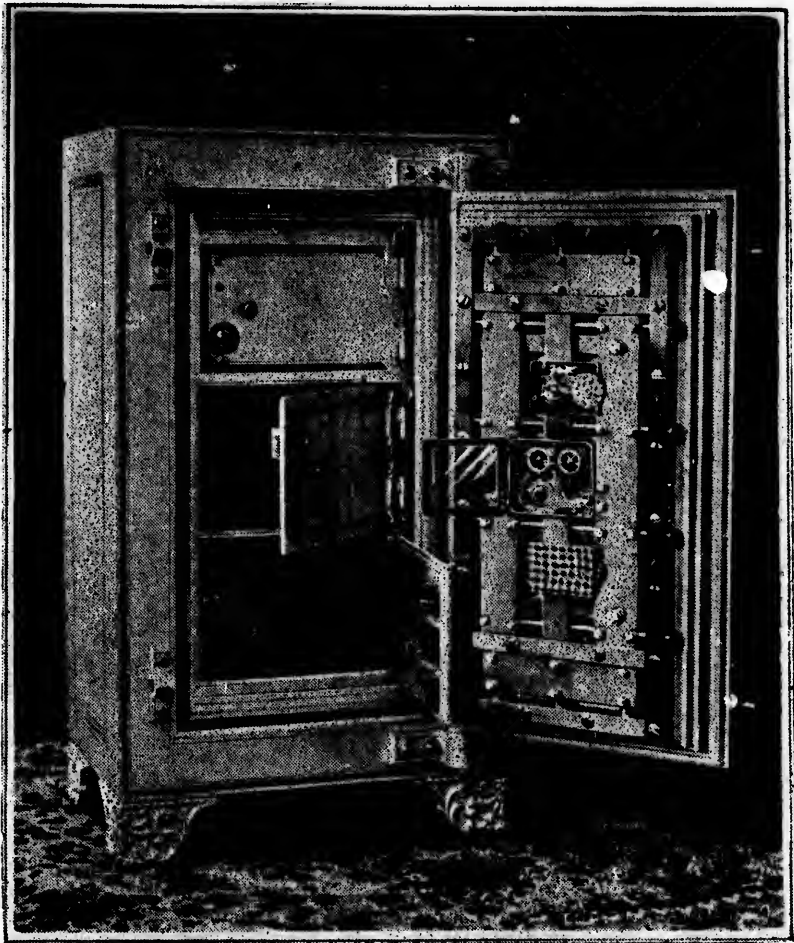
**Bankers'
Safe
No. 64**

THIS view gives interior of No. 64 Safe showing compartments and lock work. There are two four wheel combination locks and one double time lock on outer door. Inner compartments may be fitted with one or two key locks and combination lock, or one or two combination locks and one key lock.



**The Goldie
& McCulloch
Co'y
Limited,
Galt, Ontario.**

afe
rk.
on
or.
ne
or
ey




Interior View No. 64



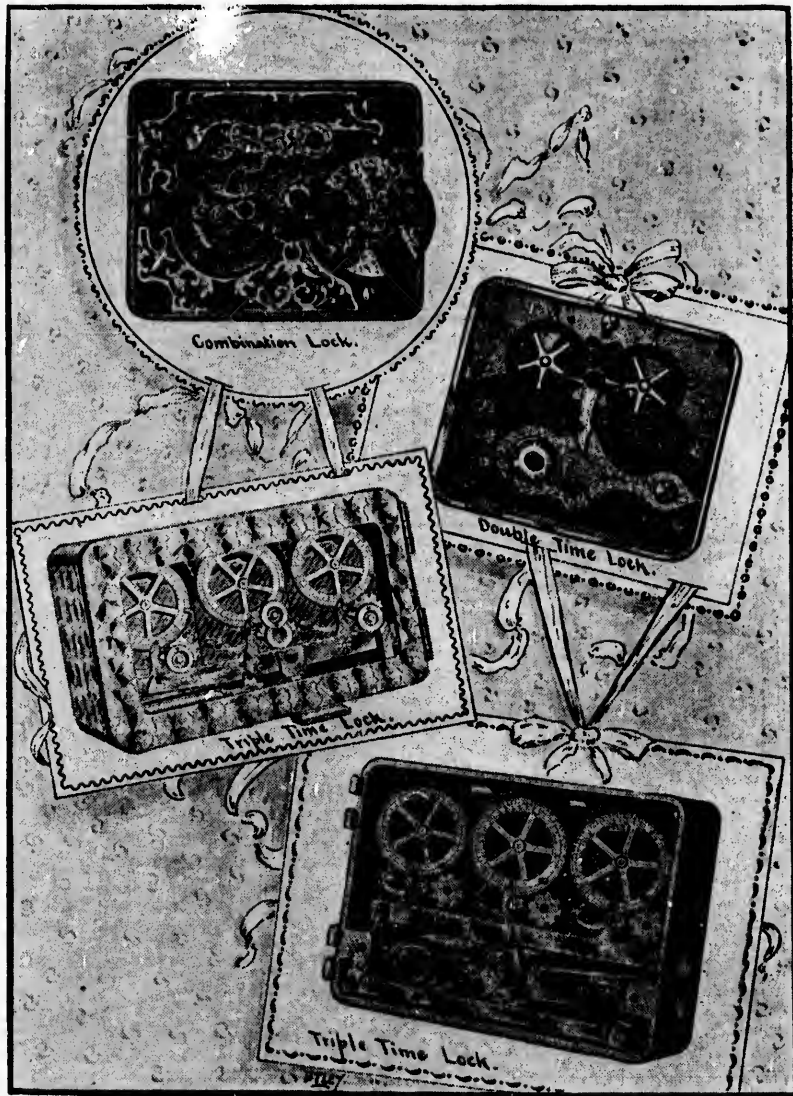
Time Locks

WHAT time locks give an emphasis to the security of a Safe is being more and more recognized by the Banks in this and other countries. There can be no danger of their violation of trust in furnishing protection to the treasure they guard. "Built like a Watch" does not begin to state the delicate nicety of their scientific construction. They may be set to unlock at any time from half an hour to three days from time of winding but they cannot be re-set or in any way effected to unlock SOONER than the time set. Not even the operator himself is able to shorten the time. The importance of this will at once be obvious to those most interested. We fit Safes with these locks when desired.



The Goldie
& McCulloch
Co'y,
Limited,
Galt, Ontario

he
re
er
ir
he
"l"
of
et
to
n-
ck
or
m-
to
th



Sargent & Greenleaf Time Locks



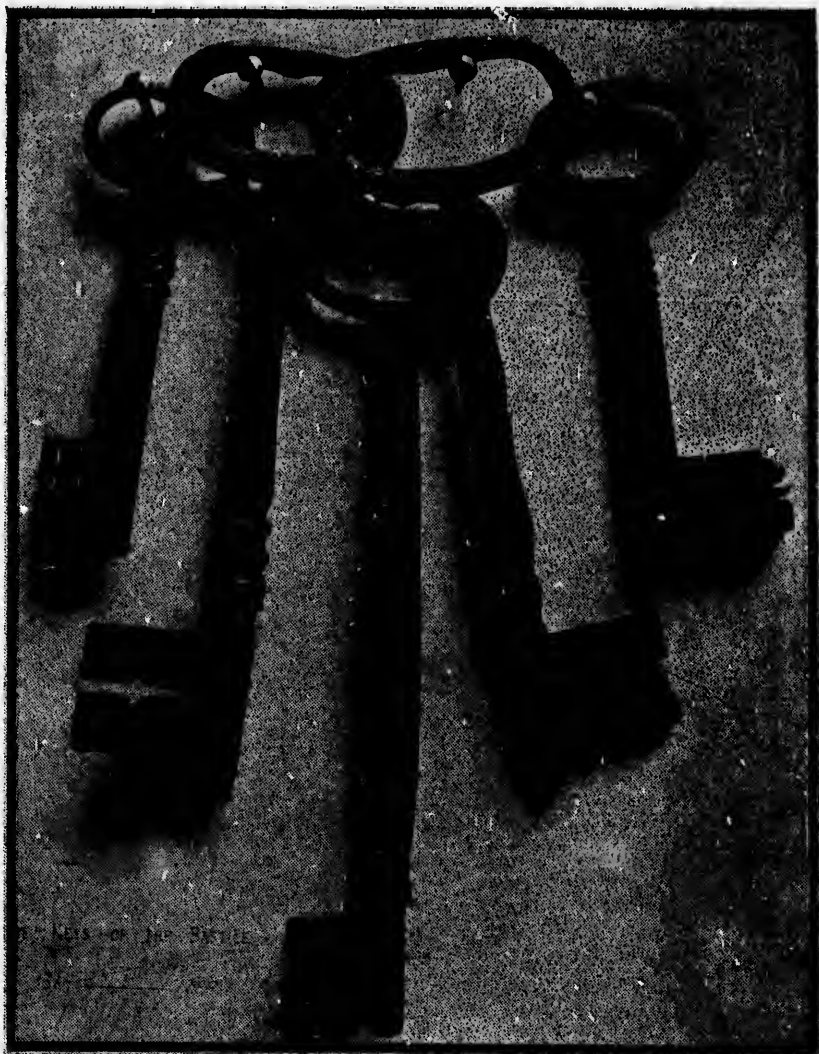
Keys
of the
Bastille

THESE old French guards doubtless did their work well in past centuries. We present them here that you may contrast security devices of the past with those of to-day. The largest key measures 11 inches. It is but a few years since similar keys were used to secure vault doors. These keys of the Bastille are in the possession of Mr. H. Spencer Howell, Galt, Ont.



The Goldie
& McCulloch
Co'y
Limited,
Galt, Ontario.

did
We
ast
to-
It
ere
of
H.



The Keys of the Bastille



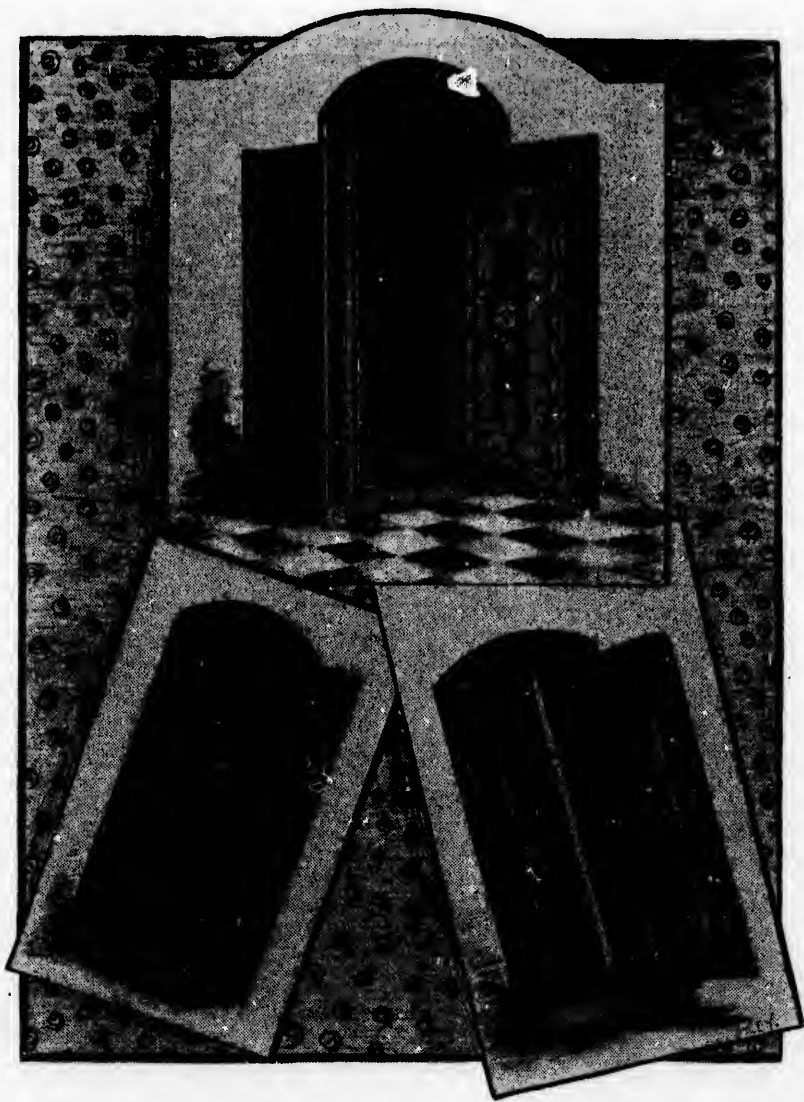
Bank
Vault
Doors

THESE doors are made similar to our Banker's Safes. The same material is used and doors may be made any desired thickness. Vestibules are lined throughout. Polished and plated bolt and lock work. Arranged for time lock if wanted.



The Goldie
& McCulloch
Co'y
Limited.
Galt, Ontario.

our
al is
ired
out.
ork.



Vault Doors

h
to.



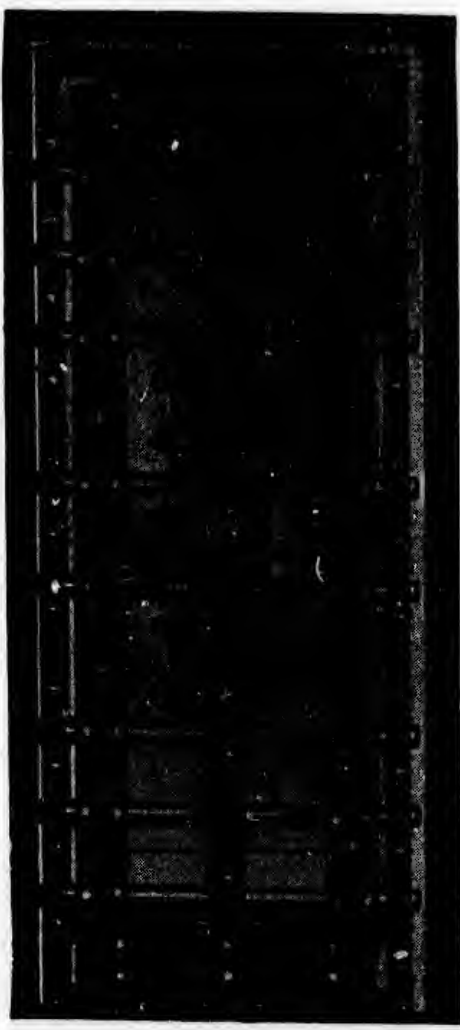
Vault
Door
Lock Work

HEREWITH is shown a pretty piece of lock work on a bank vault door. There are four 4-wheel combination locks and one triple time lock. It requires one lock of the upper set and one of the lower set to open the door. In case one lock should get out of order the door may be opened with the other. The massive bars and bolts are all highly polished and nickle plated.



The Goldie
& McCulloch
Co'y,
Limited,
Galt, Ontario.

lock
are
one
the
the
of
her.
ghly



A Pretty Piece of Lock Work

h
lo.



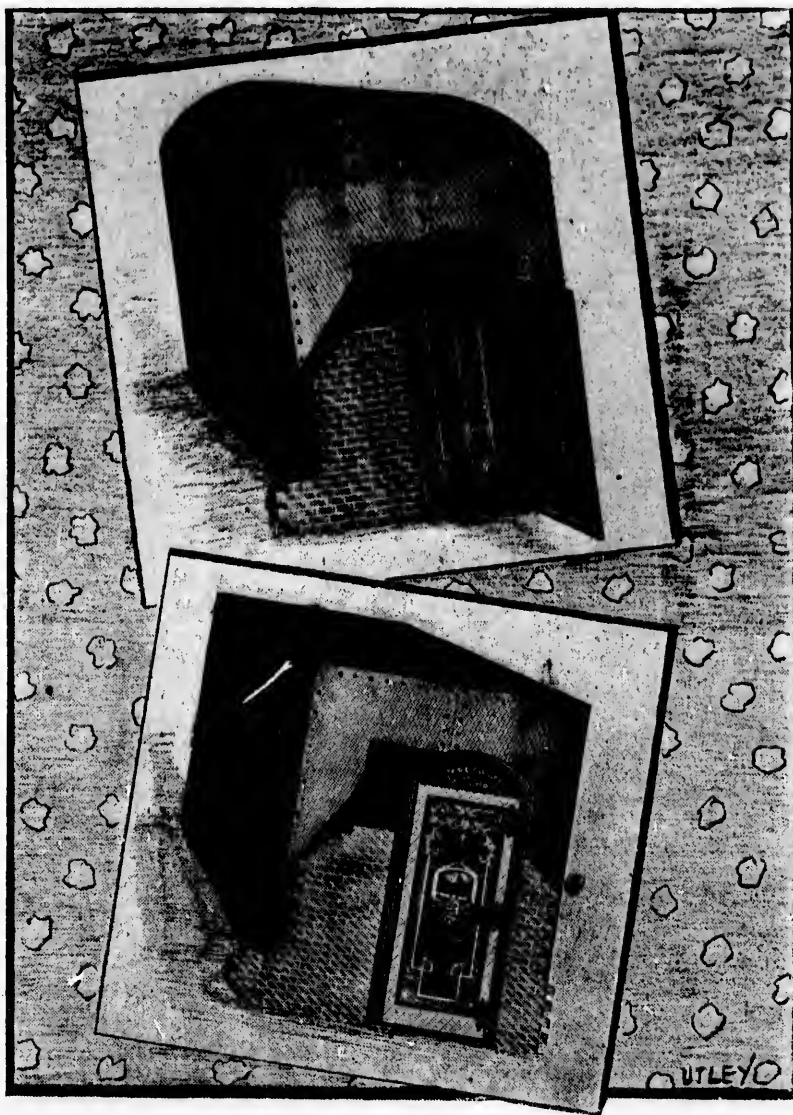
Vaults

WE make Bessemer & Chrome Steel Vaults any desired size and thickness. These Vaults may be secured with any style of door fitted with combination and time locks when desired. Estimates on work of this character cheerfully furnished.



The Goldie
& McCulloch
Co'y
Limited.
Galt, Ontario.

alts
ese
yle
me
of



Steel Vaults



Special
Deposit
Safe

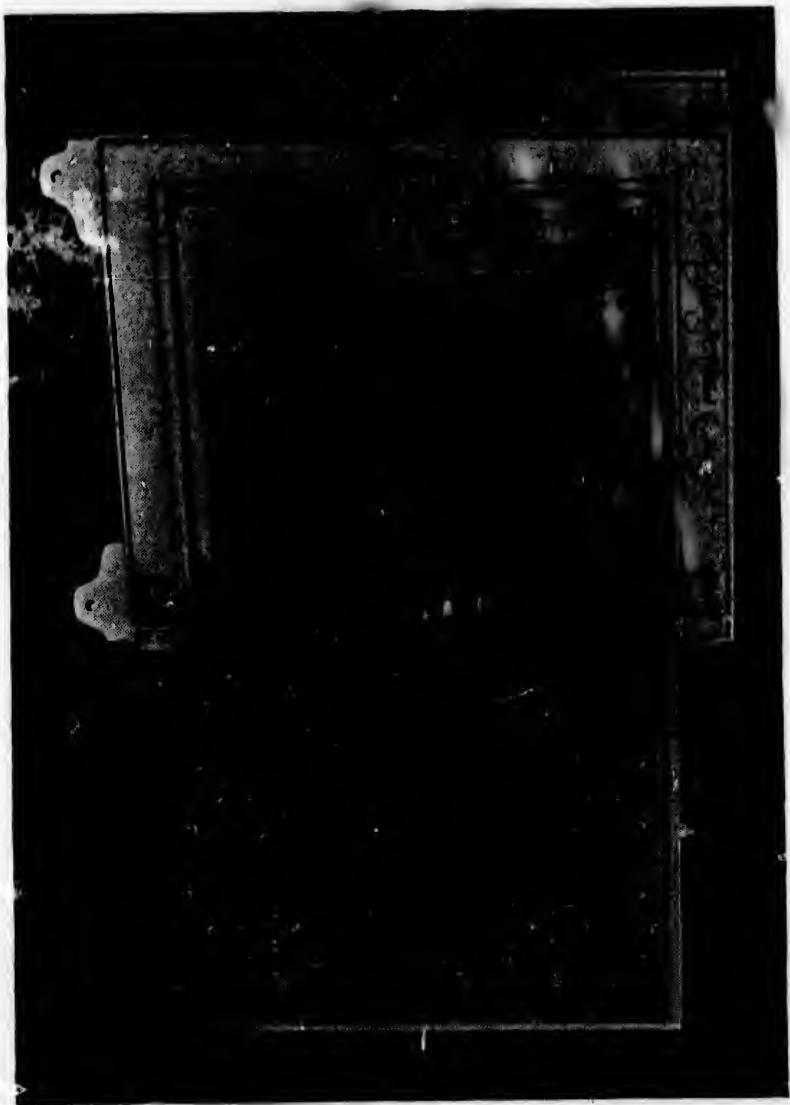
THIS design is a group of Safety Deposit Boxes arranged in a safe. The boxes have double locking safe deposit locks. Two keys required to open each. We make these safes to order any size and time locks can be attached.



The Goldie
& McCulloch
Co'y,
Limited
Galt Ontario

osit
boxes
cks.
ake
cks

Deposit Safe





Safety
Deposit
Boxes

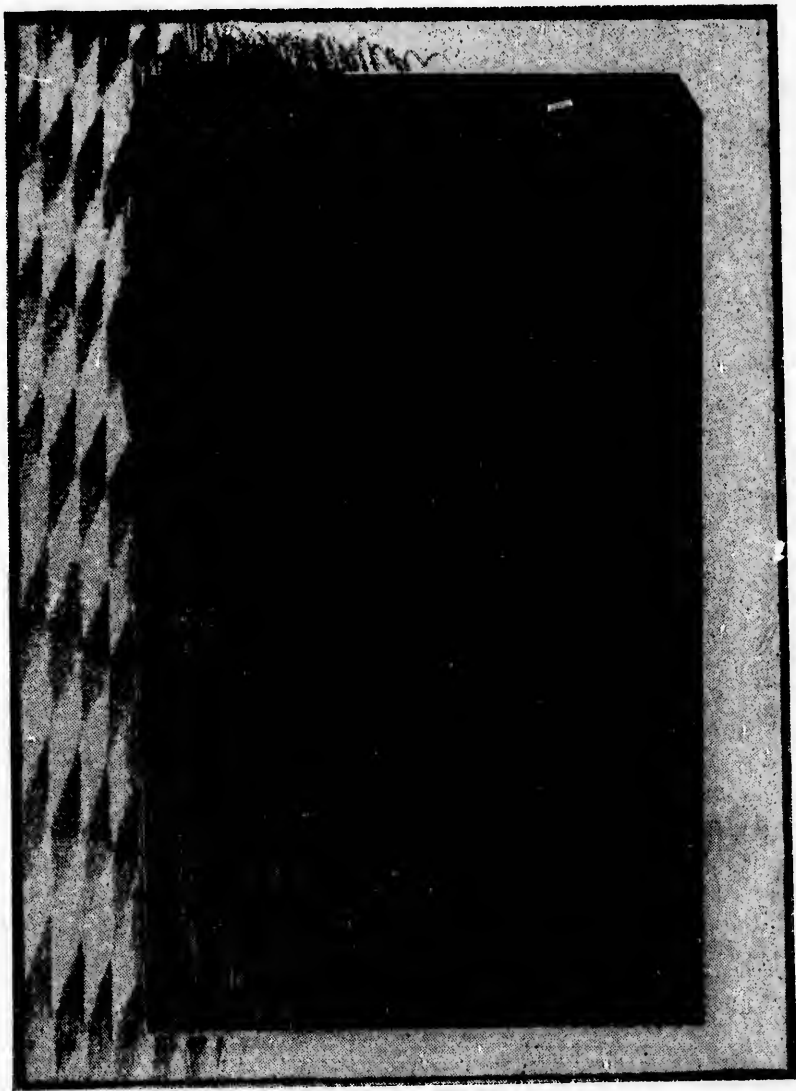
THESE boxes are designed for use by Safety Deposit Companies, Trust Companies and Banks. These we make to order any desired size. The doors are secured with double locking safe deposit box locks requiring two keys to open or with combination locks if preferred.



The Goldie
& McCulloch
Co'y
Limited.
Galt, Ontario.

fety
and
any
with
re-
tion

Safety Deposit Boxes



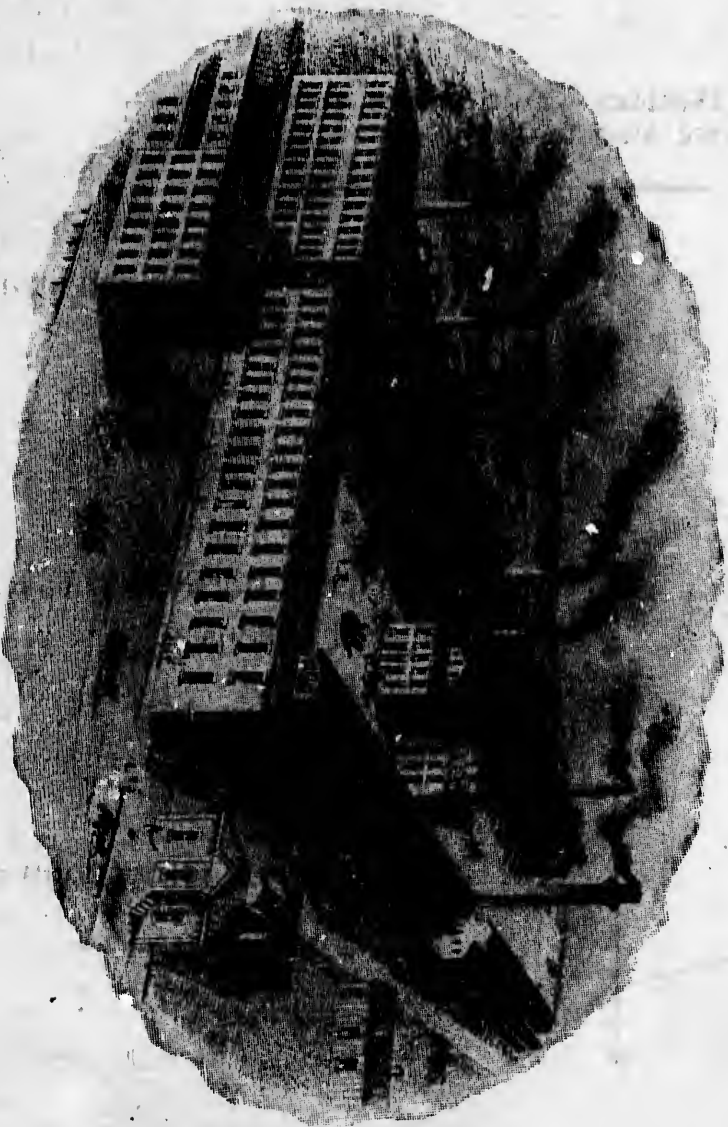


**Besides Vault Doors and Safes
we also make :**

Steam Engines (Wheelock and Ideal),
Gas and Gasoline Engines,
Bollers, Pumps, Water Wheels,
Flour Mill Machinery,
Oatmeal Mill Machinery,
Woodworking Machinery,
Stave Heading and Barrel Machinery,
Wood Rim Split Pulleys,
Friction Clutch Pulleys,
Iron Pulleys,
Shafting, Hangers, Gearing.

**THE GOLDIE & McCULLOCH CO'Y,
LIMITED,
GALT, ONTARIO.**

WRITE FOR CATALOGUE.



WORKS AND GENERAL OFFICES, GALT, ONTARIO.

JAFFRAY BROS., PRINTERS, GALT.

