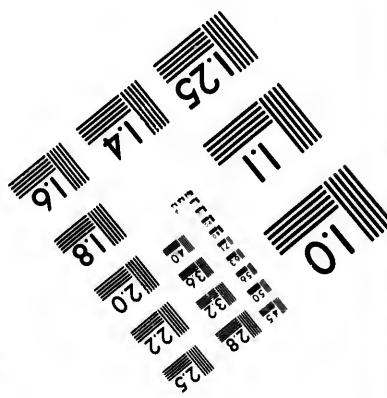
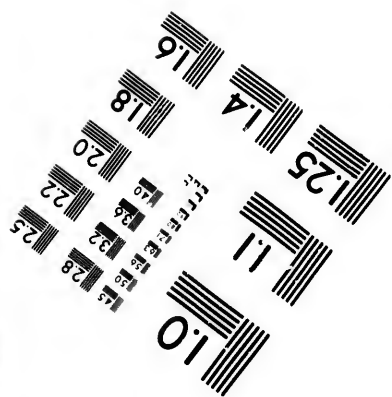
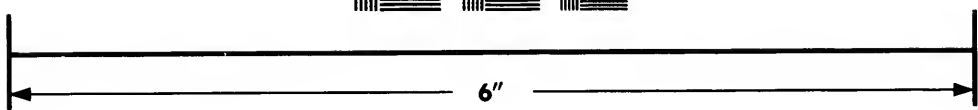
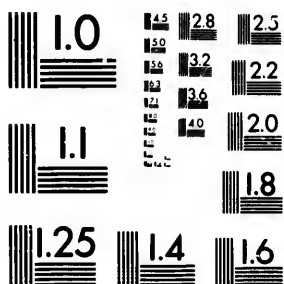


**IMAGE EVALUATION
TEST TARGET (MT-3)**



**Photographic
Sciences
Corporation**

23 WEST MAIN STREET
WEBSTER, N.Y. 14580
(716) 872-4503

15 28 2.5
32 22
20
18

**CIHM/ICMH
Microfiche
Series.**

**CIHM/ICMH
Collection de
microfiches.**



Canadian Institute for Historical Microreproductions / Institut canadien de microreproductions historiques

110
01

© 1983

Technical and Bibliographic Notes/Notes techniques et bibliographiques

The Institute has attempted to obtain the best original copy available for filming. Features of this copy which may be bibliographically unique, which may alter any of the images in the reproduction, or which may significantly change the usual method of filming, are checked below.

L'Institut a microfilmé le meilleur exemplaire qu'il lui a été possible de se procurer. Les détails de cet exemplaire qui sont peut-être uniques du point de vue bibliographique, qui peuvent modifier une image reproduite, ou qui peuvent exiger une modification dans la méthode normale de filmage sont indiqués ci-dessous.

- | | |
|--|--|
| <input type="checkbox"/> Coloured covers/
Couverture de couleur | <input type="checkbox"/> Coloured pages/
Pages de couleur |
| <input type="checkbox"/> Covers damaged/
Couverture endommagée | <input type="checkbox"/> Pages damaged/
Pages endommagées |
| <input type="checkbox"/> Covers restored and/or laminated/
Couverture restaurée et/ou pelliculée | <input type="checkbox"/> Pages restored and/or laminated/
Pages restaurées et/ou pelliculées |
| <input checked="" type="checkbox"/> Cover title missing/
Le titre de couverture manque | <input type="checkbox"/> Pages discoloured, stained or foxed/
Pages décolorées, tachetées ou piquées |
| <input type="checkbox"/> Coloured maps/
Cartes géographiques en couleur | <input type="checkbox"/> Pages detached/
Pages détachées |
| <input type="checkbox"/> Coloured ink (i.e. other than blue or black)/
Encre de couleur (i.e. autre que bleue ou noire) | <input type="checkbox"/> Showthrough/
Transparence |
| <input type="checkbox"/> Coloured plates and/or illustrations/
Planches et/ou illustrations en couleur | <input type="checkbox"/> Quality of print varies/
Qualité inégale de l'impression |
| <input type="checkbox"/> Bound with other material/
Relié avec d'autres documents | <input type="checkbox"/> Includes supplementary material/
Comprend du matériel supplémentaire |
| <input type="checkbox"/> Tight binding may cause shadows or distortion
along interior margin/
La reliure serrée peut causer de l'ombre ou de la
distortion le long de la marge intérieure | <input type="checkbox"/> Only edition available/
Seule édition disponible |
| <input type="checkbox"/> Blank leaves added during restoration may
appear within the text. Whenever possible, these
have been omitted from filming/
Il se peut que certaines pages blanches ajoutées
lors d'une restauration apparaissent dans le texte,
mais, lorsque cela était possible, ces pages n'ont
pas été filmées. | <input type="checkbox"/> Pages wholly or partially obscured by errata
slips, tissues, etc., have been refilmed to
ensure the best possible image/
Les pages totalement ou partiellement
obscurcies par un feuillet d'errata, une pelure,
etc., ont été filmées à nouveau de façon à
obtenir la meilleure image possible. |
| <input type="checkbox"/> Additional comments:/
Commentaires supplémentaires: | |

This item is filmed at the reduction ratio checked below/
Ce document est filmé au taux de réduction indiqué ci-dessous.

10X	12X	14X	16X	18X	20X	22X	24X	26X	28X	30X	32X
							<input checked="" type="checkbox"/>				

The copy filmed here has been reproduced thanks to the generosity of:

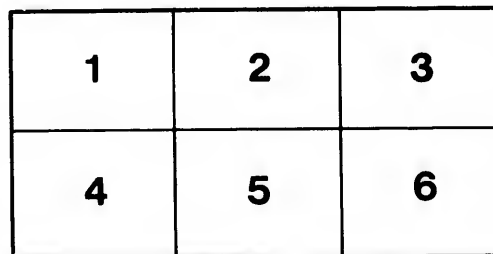
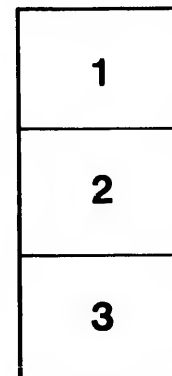
Library of Congress
Photoduplication Service

The images appearing here are the best quality possible considering the condition and legibility of the original copy and in keeping with the filming contract specifications.

Original copies in printed paper covers are filmed beginning with the front cover and ending on the last page with a printed or illustrated impression, or the back cover when appropriate. All other original copies are filmed beginning on the first page with a printed or illustrated impression, and ending on the last page with a printed or illustrated impression.

The last recorded frame on each microfiche shall contain the symbol \rightarrow (meaning "CONTINUED"), or the symbol ∇ (meaning "END"), whichever applies.

Maps, plates, charts, etc., may be filmed at different reduction ratios. Those too large to be entirely included in one exposure are filmed beginning in the upper left hand corner, left to right and top to bottom, as many frames as required. The following diagrams illustrate the method:



L'exemplaire filmé fut reproduit grâce à la générosité de:

Library of Congress
Photoduplication Service

Les images suivantes ont été reproduites avec le plus grand soin, compte tenu de la condition et de la netteté de l'exemplaire filmé, et en conformité avec les conditions du contrat de filmage.

Les exemplaires originaux dont la couverture en papier est imprimée sont filmés en commençant par le premier plat et en terminant soit par la dernière page qui comporte une empreinte d'impression ou d'illustration, soit par le second plat, selon le cas. Tous les autres exemplaires originaux sont filmés en commençant par la première page qui comporte une empreinte d'impression ou d'illustration et en terminant par la dernière page qui comporte une telle empreinte.

Un des symboles suivants apparaîtra sur la dernière image de chaque microfiche, selon le cas: le symbole \rightarrow signifie "A SUIVRE", le symbole ∇ signifie "FIN".

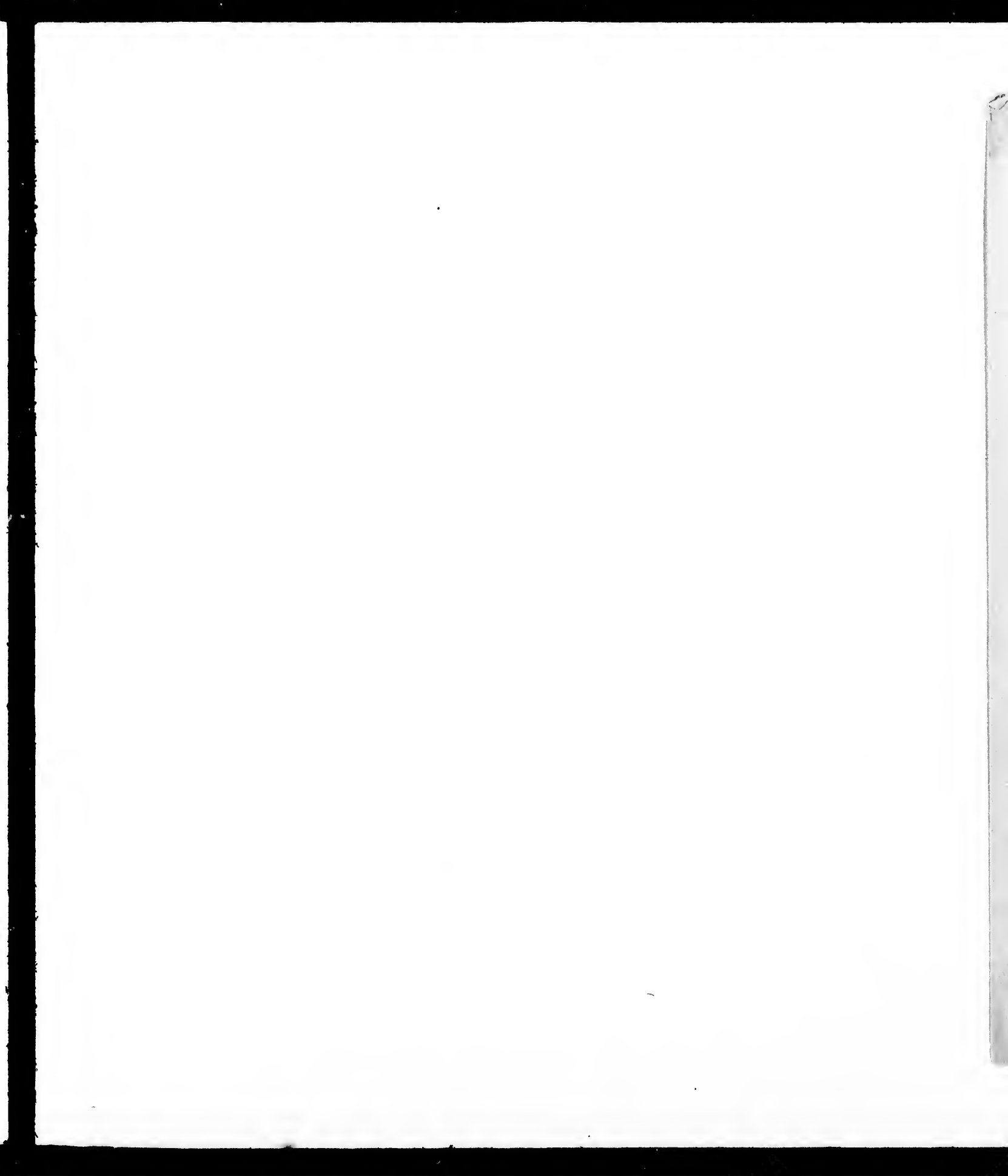
Les cartes, planches, tableaux, etc., peuvent être filmés à des taux de réduction différents. Lorsque le document est trop grand pour être reproduit en un seul cliché, il est filmé à partir de l'angle supérieur gauche, de gauche à droite, et de haut en bas, en prenant le nombre d'images nécessaire. Les diagrammes suivants illustrent la méthode.

ails
du
ndifier
une
nage

rrata
o

elure,
à

32X



U. S. Nautical Almanac office.

CORRECTIONS

TO

HANSEN'S TABLES OF THE MOON.

PREPARED AND PRINTED

FOR THE USE OF THE

AMERICAN EPHEMERIS AND NAUTICAL ALMANAC.

WASHINGTON:
GOVERNMENT PRINTING OFFICE.
1878.

In the *Researches on the Motion of the Moon*,* to be presented in Appendix II of the Washington Observations for 1875, it is shown that the large deviations of Hansen's lunar tables from observations will almost entirely disappear by substituting for the empirical term an empirical alteration of the other term due to the action of Venus, and by making suitable alterations in the elements of mean motion. The entire secular and long period corrections may be formulated as follows: Put

$$V_2 = 21''.47 \sin (8 V - 13 E + 274^\circ 14').$$

(The empirical term.)

$$A = 18 V - 16 E - g.$$

T = time after 1800.0, counted in centuries.

QB 399
.H27

Then the sum of the corrections in question is:

$$- V_2 - 1''.14 - 29''.17 T - 3''.76 T^2 - 15''.5 \cos A.$$

For the present purposes, the most convenient way of applying these corrections is to omit Table XLI, Arg. 30, which contains V_2 , and to replace it by the sum of the above terms, omitting the first; this sum being tabulated as a function of the time. Table XLI, however, contains the constant $21''.49$, which will be omitted with the table, and must therefore be applied in the new table. The quantity by which table XLI must be replaced is therefore

$$20''.35 - 29''.17 T - 3''.76 T^2 - 15''.5 \cos A.$$

this is to be reduced to Hansen's units by being multiplied by the factor 212.6. The result is shown for the beginning of each tenth year of the present century, and interpolated to every year from 1880 to 1900 in the first of the following tables.

This is followed by a corrected table XXXIV, in which the term

$$0''.335 \sin (2g - 4g' + 2w - 4w'),$$

is removed and replaced by

$$- 0''.285 \sin (2g - 4g' + 2w - 4w'),$$

conformably to the results given on p. 439 of Hansen's *Darlegung*. Reducing the correction to Hansen's units, it is

$$- 131 \sin (2g - 4g' + 2w - 4w').$$

This quantity being tabulated and applied to Hansen's Table XXXIV, we have the corrected table here given.

No further corrections than these are now proposed, because they would of necessity, in the present state of the lunar theory, be purely provisional, and would prove a source of trouble in revising the theory.

With these corrections it is intended to employ Hansen's Tables in the American Ephemeris for 1883.

SIMON NEWCOMB.

* Abstract in Silliman's Journal for November, 1877.

Observations for
 tirely disappear
 Venus, and by
 rections may be

A. F. 3. X. 68

XLI, Arg. 30,
 g tabulated as a
 h the table, and
 erefore

r the beginning
 t of the follow-

sen's units, it is

re given.
 ent state of the

883.

7COMB.

TABLE XLI.

Argument. The year of the Christian era.

Year.	Ineq.	Year.	Ineq.
1800	+7603	1880	-2235
1810	6835	1881	-2381
1820	5889	1882	-2526
1830	4779	1883	-2671
1840	3523	1884	-2815
1850	2160	1885	-2959
1860	+714	1886	-3102
1870	-759	1887	-3245
1880	-2235	1888	-3387
1890	-3668	1889	-3528
1900	-5024	1890	-3668

