

**CIHM
Microfiche
Series
(Monographs)**

**ICMH
Collection de
microfiches
(monographies)**



Canadian Institute for Historical Microreproductions / Institut canadien de microreproductions historiques

© 1994

The Institu
copy avail
may be bib
of the imag
significant
checked be

Color
Cover

Cover
Cover

Cover
Cover

Cover
Le ti

Color
Carte

Color
Encl

Color
Plan

Bou
Reli

Tigh
alon

La r
diste

Blan
with
beer

Il se
lors
mais
pas

Add
Con

This item
Ce docum

10X

Technical and Bibliographic Notes / Notes techniques et bibliographiques

Institute has attempted to obtain the best original available for filming. Features of this copy which are bibliographically unique, which may alter any pages in the reproduction, or which may materially change the usual method of filming, are listed below.

L'Institut a microfilmé le meilleur exemplaire qu'il lui a été possible de se procurer. Les détails de cet exemplaire qui sont peut-être uniques du point de vue bibliographique, qui peuvent modifier une image reproduite, ou qui peuvent exiger une modification dans la méthode normale de filmage sont indiqués ci-dessous.

Coloured covers/
Couverture de couleur

Coloured pages/
Pages de couleur

Covers damaged/
Couverture endommagée

Pages damaged/
Pages endommagées

Covers restored and/or laminated/
Couverture restaurée et/ou pelliculée

Pages restored and/or laminated/
Pages restaurées et/ou pelliculées

Cover title missing/
Le titre de couverture manque

Pages discoloured, stained or foxed/
Pages décolorées, tachetées ou piquées

Coloured maps/
Cartes géographiques en couleur

Pages detached/
Pages détachées

Coloured ink (i.e. other than blue or black)/
Encre de couleur (i.e. autre que bleue ou noire)

Showthrough/
Transparence

Coloured plates and/or illustrations/
Planches et/ou illustrations en couleur

Quality of print varies/
Qualité inégale de l'impression

Bound with other material/
Relié avec d'autres documents

Continuous pagination/
Pagination continue

Tight binding may cause shadows or distortion along interior margin/
La reliure serrée peut causer de l'ombre ou de la distorsion le long de la marge intérieure

Includes index(es)/
Comprend un (des) index

Title on header taken from:/
Le titre de l'en-tête provient:

Blank leaves added during restoration may appear within the text. Whenever possible, these have been omitted from filming/
Il se peut que certaines pages blanches ajoutées lors d'une restauration apparaissent dans le texte, mais, lorsque cela était possible, ces pages n'ont pas été filmées.

Title page of issue/
Page de titre de la livraison

Caption of issue/
Titre de départ de la livraison.

Masthead/
Générique (périodiques) de la livraison

Part of leaf [23] is missing.
There are some creases in the middle of pages.
Pagination is unnumbered.

Additional comments: /

Commentaires supplémentaires:

Item is filmed at the reduction ratio checked below/
Document est filmé au taux de réduction indiqué ci-dessous.

14X

18X

22X

26X

30X

12X

16X

20X

24X

28X

32X



The copy filmed here has been reproduced thanks to the generosity of:

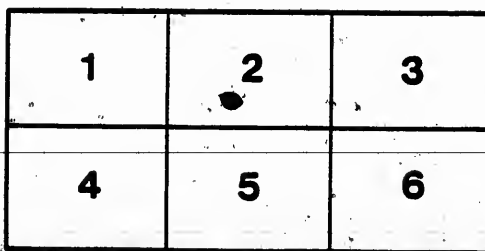
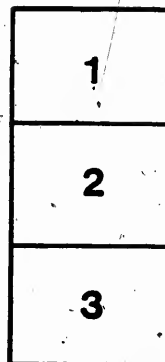
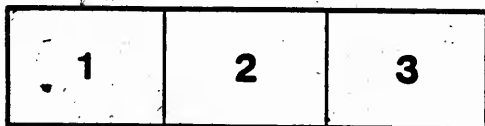
Archives of Ontario
Toronto

The images appearing here are the best quality possible considering the condition and legibility of the original copy and in keeping with the filming contract specifications.

Original copies in printed paper covers are filmed beginning with the front cover and ending on the last page with a printed or illustrated impression, or the back cover when appropriate. All other original copies are filmed beginning on the first page with a printed or illustrated impression, and ending on the last page with a printed or illustrated impression.

The last recorded frame on each microfiche shall contain the symbol \rightarrow (meaning "CONTINUED"), or the symbol ∇ (meaning "END"), whichever applies.

Maps, plates, charts, etc., may be filmed at different reduction ratios. Those too large to be entirely included in one exposure are filmed beginning in the upper left hand corner, left to right and top to bottom, as many frames as required. The following diagrams illustrate the method:



L'exemplaire filmé fut reproduit grâce à la générosité de:

Archives of Ontario
Toronto

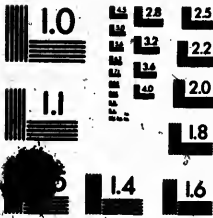
Les images suivantes ont été reproduites avec le plus grand soin, compte tenu de la condition et de la netteté de l'exemplaire filmé, et en conformité avec les conditions du contrat de filmage.

Les exemplaires originaux dont la couverture en papier est imprimée sont filmés en commençant par le premier plat et en terminant soit par la dernière page qui comporte une empreinte d'impression ou d'illustration, soit par le second plat, selon le cas. Tous les autres exemplaires originaux sont filmés en commençant par la première page qui comporte une empreinte d'impression ou d'illustration et en terminant par la dernière page qui comporte une telle empreinte.

Un des symboles suivants apparaîtra sur la dernière image de chaque microfiche, selon le cas: le symbole \rightarrow signifie "A SUIVRE", le symbole ∇ signifie "FIN".

Les cartes, planches, tableaux, etc., peuvent être filmés à des taux de réduction différents. Lorsque le document est trop grand pour être reproduit en un seul cliché, il est filmé à partir de l'angle supérieur gauche, de gauche à droite, et de haut en bas, en prenant le nombre d'images nécessaire. Les diagrammes suivants illustrent la méthode.

MICROCOPY RESOLUTION TEST CHART
(ANSI and ISO TEST CHART No. 2)



APPLIED IMAGE Inc
1853 East 91st Street
Rochester, New York 14609 USA
(716) 462-5000 - Phone
(716) 265-5800 - Fax



VOTERS' LIST, 1887.

TOWNSHIP OF STEPHEN.

CLERK'S CERTIFICATE.

I, CHESTER FROUTT, Clerk of the Municipality of the Township of Stephen, in the County of Huron, do hereby certify that parts One and Three of the within List contains a correct List for the year 1887, of all persons appearing by the last revised Assessment Roll of the said Municipality to be entitled to vote at Elections for members of the Legislative Assembly, and that parts One and Two constitute a correct List for said year, of all persons appearing by the said Roll to be entitled to vote at Municipal Elections, in said Municipality.

And I hereby call upon all persons to examine the said Lists, and if any omission or other error or irregularity therein, to take immediate proceedings to have the said errors corrected according to law.

Dated this 6th day of August 1887.

CHESTER FROUTT, Township Clerk, Stephen.

JUDGE'S CERTIFICATE.

CHESTER FROUTT, Clerk of the Municipality of Stephen, having certified under his hand that no material exception to the List of Voters for said Municipality for the year 1887 had been received by him within thirty days after the first putting up of the same, and on application of the said Clerk, I, ISAAC FRANKS TORR, Esq., Judge of the County Court of Huron, in pursuance of the provisions of the Voters' List Act, certify that the within printed List of Voters, being one of the copies reserved by me from the said Clerk, under Section 2 of the said Act, is the Revised List of Voters for the said Municipality for the year 1887.

Given under my hand and seal, at Godwin, in the said County, this day of 1887.

I, ISAAC FRANKS TORR, Esq., Judge of the County Court of the County of Huron, pursuant to the 10th Section of the Voters' List Act, do hereby certify that the within is a correct copy of the List of Voters for the year 1887, received by me from the Clerk of the Municipality of Stephen Township, according to my return and certification thereof, pursuant to the provisions of the said Act.

..... day of 1887
in the said County, this

This document shall immediately upon receipt of his copies, cause one of them to be put up in a suitable place in the Court House, the Clerk of the Peace, upon receipt of his copies, shall cause one of them to be put up in a suitable place in his office, every Justice of the Peace, every Justice of the Peace or Magistrate shall cause one of them to be put up in a suitable place on the door of the Peace Office, and every Peace Officer shall put up one of his copies in his Peace Office.

EDWARD GIBSON, CLERK.

VOTING LIST 1917.

MUNICIPALITY OF WASHINGTON

COMMISSIONERS OF POLLING DIVISIONS: 1. William S. ... 2. ... 3. ... 4. ... 5. ... 6. ... 7. ... 8. ... 9. ...

POLLING DIVISION NO. 1

Containing Precincts 1, 2, 3, and 4, and Precincts 5 and 6.

PART I - List of Persons entitled to Vote at the Election to the Legislative Assembly and Municipal Council

PRECINCT	NAME	RESIDENCE	AGE	SEX	STATUS
1	Abner Thomas	208 E.	Owner
	Alfred	Owner
	Alma	Owner
	Andrew	Owner
2	John	Owner
	Owner
	Owner
	Owner
3	Owner
	Owner
	Owner
	Owner
4	Owner
	Owner
	Owner
	Owner
5	Owner
	Owner
	Owner
	Owner
6	Owner
	Owner
	Owner
	Owner

1	1	1	1
2	2	2	2
3	3	3	3

4	4	4	4



POLLING DISTRICT NO. 2.
Containing Sections 2 and 3, and lots 22 and 23, Con. 1, and Boundary Lots 1 and 2, inclusive.

PART I.—List of Persons entitled to Vote at Elections in the Legislative Assembly and Municipal Elections.

No.	Surname	Given Name	Residence	Sex	Age
1	Anderson	Olaf	M
2	M
3	M
4	M
5	M
6	M
7	M
8	M
9	M
10	M
11	M
12	M
13	M
14	M
15	M
16	M
17	M
18	M
19	M
20	M
21	M
22	M
23	M
24	M
25	M
26	M
27	M
28	M
29	M
30	M
31	M
32	M
33	M
34	M
35	M
36	M
37	M
38	M
39	M
40	M
41	M
42	M
43	M
44	M
45	M
46	M
47	M
48	M
49	M
50	M

REGISTRATION LIST

NO.	NAME	RES.	DATE	STATUS
1	John Smith	123 Main St	1890	Registered
2	Jane Doe	456 Elm St	1890	Registered
3	Robert Brown	789 Oak St	1890	Registered
4	Elizabeth White	101 Pine St	1890	Registered
5	William Green	202 Cedar St	1890	Registered
6	Mary Black	303 Birch St	1890	Registered
7	James Gray	404 Walnut St	1890	Registered
8	Sarah King	505 Spruce St	1890	Registered
9	George Lee	606 Ash St	1890	Registered
10	Anna Hall	707 Hickory St	1890	Registered
11	Thomas Young	808 Sycamore St	1890	Registered
12	Elizabeth Scott	909 Chestnut St	1890	Registered
13	John Adams	1010 Maple St	1890	Registered
14	Mary Taylor	1111 Poplar St	1890	Registered
15	Robert Wilson	1212 Willow St	1890	Registered
16	Elizabeth Moore	1313 Dogwood St	1890	Registered
17	William Evans	1414 Magnolia St	1890	Registered
18	Mary Clark	1515 Camellia St	1890	Registered
19	George Baker	1616 Hibiscus St	1890	Registered
20	Anna Miller	1717 Zinnia St	1890	Registered
21	Thomas Hall	1818 Petunia St	1890	Registered
22	Elizabeth King	1919 Marigold St	1890	Registered
23	John Lee	2020 Sunflower St	1890	Registered
24	Mary White	2121 Gladiolus St	1890	Registered
25	Robert Green	2222 Iris St	1890	Registered
26	Elizabeth Black	2323 Daffodil St	1890	Registered
27	William Gray	2424 Tulip St	1890	Registered
28	Mary Brown	2525 Rose St	1890	Registered
29	George White	2626 Lily St	1890	Registered
30	Anna Black	2727 Violet St	1890	Registered
31	Thomas Green	2828 Orchid St	1890	Registered
32	Elizabeth Gray	2929 Begonia St	1890	Registered
33	John White	3030 Fuchsia St	1890	Registered
34	Mary Black	3131 Geranium St	1890	Registered
35	Robert Green	3232 Impatiens St	1890	Registered
36	Elizabeth White	3333 Ranunculus St	1890	Registered
37	William Black	3434 Delphinium St	1890	Registered
38	Mary Gray	3535 Aster St	1890	Registered
39	George Brown	3636 Camellia St	1890	Registered
40	Anna White	3737 Hibiscus St	1890	Registered
41	Thomas Black	3838 Zinnia St	1890	Registered
42	Elizabeth Gray	3939 Petunia St	1890	Registered
43	John White	4040 Marigold St	1890	Registered
44	Mary Black	4141 Sunflower St	1890	Registered
45	Robert Green	4242 Gladiolus St	1890	Registered
46	Elizabeth White	4343 Iris St	1890	Registered
47	William Black	4444 Daffodil St	1890	Registered
48	Mary Gray	4545 Tulip St	1890	Registered
49	George Brown	4646 Rose St	1890	Registered
50	Anna White	4747 Lily St	1890	Registered
51	Thomas Black	4848 Violet St	1890	Registered
52	Elizabeth Gray	4949 Orchid St	1890	Registered
53	John White	5050 Begonia St	1890	Registered
54	Mary Black	5151 Fuchsia St	1890	Registered
55	Robert Green	5252 Geranium St	1890	Registered
56	Elizabeth White	5353 Impatiens St	1890	Registered
57	William Black	5454 Ranunculus St	1890	Registered
58	Mary Gray	5555 Delphinium St	1890	Registered
59	George Brown	5656 Aster St	1890	Registered
60	Anna White	5757 Camellia St	1890	Registered
61	Thomas Black	5858 Hibiscus St	1890	Registered
62	Elizabeth Gray	5959 Zinnia St	1890	Registered
63	John White	6060 Petunia St	1890	Registered
64	Mary Black	6161 Marigold St	1890	Registered
65	Robert Green	6262 Sunflower St	1890	Registered
66	Elizabeth White	6363 Gladiolus St	1890	Registered
67	William Black	6464 Iris St	1890	Registered
68	Mary Gray	6565 Daffodil St	1890	Registered
69	George Brown	6666 Tulip St	1890	Registered
70	Anna White	6767 Rose St	1890	Registered
71	Thomas Black	6868 Lily St	1890	Registered
72	Elizabeth Gray	6969 Violet St	1890	Registered
73	John White	7070 Orchid St	1890	Registered
74	Mary Black	7171 Begonia St	1890	Registered
75	Robert Green	7272 Fuchsia St	1890	Registered
76	Elizabeth White	7373 Geranium St	1890	Registered
77	William Black	7474 Impatiens St	1890	Registered
78	Mary Gray	7575 Ranunculus St	1890	Registered
79	George Brown	7676 Delphinium St	1890	Registered
80	Anna White	7777 Aster St	1890	Registered
81	Thomas Black	7878 Camellia St	1890	Registered
82	Elizabeth Gray	7979 Hibiscus St	1890	Registered
83	John White	8080 Zinnia St	1890	Registered
84	Mary Black	8181 Petunia St	1890	Registered
85	Robert Green	8282 Marigold St	1890	Registered
86	Elizabeth White	8383 Sunflower St	1890	Registered
87	William Black	8484 Gladiolus St	1890	Registered
88	Mary Gray	8585 Iris St	1890	Registered
89	George Brown	8686 Daffodil St	1890	Registered
90	Anna White	8787 Tulip St	1890	Registered
91	Thomas Black	8888 Rose St	1890	Registered
92	Elizabeth Gray	8989 Lily St	1890	Registered
93	John White	9090 Violet St	1890	Registered
94	Mary Black	9191 Orchid St	1890	Registered
95	Robert Green	9292 Begonia St	1890	Registered
96	Elizabeth White	9393 Fuchsia St	1890	Registered
97	William Black	9494 Geranium St	1890	Registered
98	Mary Gray	9595 Impatiens St	1890	Registered
99	George Brown	9696 Ranunculus St	1890	Registered
100	Anna White	9797 Delphinium St	1890	Registered

RECORD OF THE ...

No.	Name	Rank	Company	Regiment	Service
1
2
3
4
5
6
7
8
9
10
11
12
13
14
15
16
17
18
19
20
21
22
23
24
25
26
27
28
29
30
31
32
33
34
35
36
37
38
39
40
41
42
43
44
45
46
47
48
49
50

POLLING SUB-DIVISION NO. 3

NAME	RESIDENCE	DATE	STATUS
John Doe	123 Main St.	Oct 11	Qualified

PART 2.—Persons entitled to vote at Municipal Elections only

NAME	RESIDENCE	DATE	STATUS
Arthur Clark	456 Elm St.	Oct 11	Qualified
John Brown	789 Oak St.	Oct 11	Qualified
John Green	101 Pine St.	Oct 11	Qualified
John White	202 Cedar St.	Oct 11	Qualified
John Black	303 Birch St.	Oct 11	Qualified
John Gray	404 Spruce St.	Oct 11	Qualified
John Blue	505 Willow St.	Oct 11	Qualified
John Red	606 Ash St.	Oct 11	Qualified
John Purple	707 Hickory St.	Oct 11	Qualified

PART 3.—Persons entitled to vote at Elections for the Legislative Assembly only.

NAME	RESIDENCE	DATE	STATUS
Samuel Clark	101 Main St.	Oct 11	Qualified
Samuel Brown	202 Elm St.	Oct 11	Qualified
Samuel Green	303 Oak St.	Oct 11	Qualified
Samuel White	404 Pine St.	Oct 11	Qualified
Samuel Black	505 Cedar St.	Oct 11	Qualified
Samuel Gray	606 Birch St.	Oct 11	Qualified
Samuel Blue	707 Spruce St.	Oct 11	Qualified
Samuel Red	808 Willow St.	Oct 11	Qualified
Samuel Purple	909 Ash St.	Oct 11	Qualified
Samuel Yellow	1010 Hickory St.	Oct 11	Qualified
Samuel Orange	1111 Maple St.	Oct 11	Qualified
Samuel Silver	1212 Poplar St.	Oct 11	Qualified
Samuel Gold	1313 Sycamore St.	Oct 11	Qualified
Samuel Iron	1414 Chestnut St.	Oct 11	Qualified
Samuel Lead	1515 Walnut St.	Oct 11	Qualified
Samuel Tin	1616 Olive St.	Oct 11	Qualified
Samuel Zinc	1717 Pear St.	Oct 11	Qualified
Samuel Nickel	1818 Peach St.	Oct 11	Qualified
Samuel Cobalt	1919 Plum St.	Oct 11	Qualified
Samuel Manganese	2020 Cherry St.	Oct 11	Qualified
Samuel Magnesium	2121 Apple St.	Oct 11	Qualified
Samuel Silicon	2222 Banana St.	Oct 11	Qualified
Samuel Sulfur	2323 Orange St.	Oct 11	Qualified
Samuel Chlorine	2424 Lemon St.	Oct 11	Qualified
Samuel Nitrogen	2525 Lime St.	Oct 11	Qualified
Samuel Oxygen	2626 Grape St.	Oct 11	Qualified
Samuel Hydrogen	2727 Strawberry St.	Oct 11	Qualified
Samuel Carbon	2828 Raspberry St.	Oct 11	Qualified
Samuel Calcium	2929 Blueberry St.	Oct 11	Qualified
Samuel Potassium	3030 Blackberry St.	Oct 11	Qualified
Samuel Sodium	3131 Elderberry St.	Oct 11	Qualified
Samuel Magnesium	3232 Mulberry St.	Oct 11	Qualified
Samuel Silicon	3333 Currant St.	Oct 11	Qualified
Samuel Sulfur	3434 Raspberry St.	Oct 11	Qualified
Samuel Chlorine	3535 Strawberry St.	Oct 11	Qualified
Samuel Nitrogen	3636 Blackberry St.	Oct 11	Qualified
Samuel Oxygen	3737 Elderberry St.	Oct 11	Qualified
Samuel Hydrogen	3838 Mulberry St.	Oct 11	Qualified
Samuel Carbon	3939 Currant St.	Oct 11	Qualified
Samuel Calcium	4040 Raspberry St.	Oct 11	Qualified
Samuel Potassium	4141 Strawberry St.	Oct 11	Qualified
Samuel Sodium	4242 Blackberry St.	Oct 11	Qualified
Samuel Magnesium	4343 Elderberry St.	Oct 11	Qualified
Samuel Silicon	4444 Mulberry St.	Oct 11	Qualified
Samuel Sulfur	4545 Currant St.	Oct 11	Qualified
Samuel Chlorine	4646 Raspberry St.	Oct 11	Qualified
Samuel Nitrogen	4747 Strawberry St.	Oct 11	Qualified
Samuel Oxygen	4848 Blackberry St.	Oct 11	Qualified
Samuel Hydrogen	4949 Elderberry St.	Oct 11	Qualified
Samuel Carbon	5050 Mulberry St.	Oct 11	Qualified
Samuel Calcium	5151 Currant St.	Oct 11	Qualified
Samuel Potassium	5252 Raspberry St.	Oct 11	Qualified
Samuel Sodium	5353 Strawberry St.	Oct 11	Qualified
Samuel Magnesium	5454 Blackberry St.	Oct 11	Qualified
Samuel Silicon	5555 Elderberry St.	Oct 11	Qualified
Samuel Sulfur	5656 Mulberry St.	Oct 11	Qualified
Samuel Chlorine	5757 Currant St.	Oct 11	Qualified
Samuel Nitrogen	5858 Raspberry St.	Oct 11	Qualified
Samuel Oxygen	5959 Strawberry St.	Oct 11	Qualified
Samuel Hydrogen	6060 Blackberry St.	Oct 11	Qualified
Samuel Carbon	6161 Elderberry St.	Oct 11	Qualified
Samuel Calcium	6262 Mulberry St.	Oct 11	Qualified
Samuel Potassium	6363 Currant St.	Oct 11	Qualified
Samuel Sodium	6464 Raspberry St.	Oct 11	Qualified
Samuel Magnesium	6565 Strawberry St.	Oct 11	Qualified
Samuel Silicon	6666 Blackberry St.	Oct 11	Qualified
Samuel Sulfur	6767 Elderberry St.	Oct 11	Qualified
Samuel Chlorine	6868 Mulberry St.	Oct 11	Qualified
Samuel Nitrogen	6969 Currant St.	Oct 11	Qualified
Samuel Oxygen	7070 Raspberry St.	Oct 11	Qualified
Samuel Hydrogen	7171 Strawberry St.	Oct 11	Qualified
Samuel Carbon	7272 Blackberry St.	Oct 11	Qualified
Samuel Calcium	7373 Elderberry St.	Oct 11	Qualified
Samuel Potassium	7474 Mulberry St.	Oct 11	Qualified
Samuel Sodium	7575 Currant St.	Oct 11	Qualified
Samuel Magnesium	7676 Raspberry St.	Oct 11	Qualified
Samuel Silicon	7777 Strawberry St.	Oct 11	Qualified
Samuel Sulfur	7878 Blackberry St.	Oct 11	Qualified
Samuel Chlorine	7979 Elderberry St.	Oct 11	Qualified
Samuel Nitrogen	8080 Mulberry St.	Oct 11	Qualified
Samuel Oxygen	8181 Currant St.	Oct 11	Qualified
Samuel Hydrogen	8282 Raspberry St.	Oct 11	Qualified
Samuel Carbon	8383 Strawberry St.	Oct 11	Qualified
Samuel Calcium	8484 Blackberry St.	Oct 11	Qualified
Samuel Potassium	8585 Elderberry St.	Oct 11	Qualified
Samuel Sodium	8686 Mulberry St.	Oct 11	Qualified
Samuel Magnesium	8787 Currant St.	Oct 11	Qualified
Samuel Silicon	8888 Raspberry St.	Oct 11	Qualified
Samuel Sulfur	8989 Strawberry St.	Oct 11	Qualified
Samuel Chlorine	9090 Blackberry St.	Oct 11	Qualified
Samuel Nitrogen	9191 Elderberry St.	Oct 11	Qualified
Samuel Oxygen	9292 Mulberry St.	Oct 11	Qualified
Samuel Hydrogen	9393 Currant St.	Oct 11	Qualified
Samuel Carbon	9494 Raspberry St.	Oct 11	Qualified
Samuel Calcium	9595 Strawberry St.	Oct 11	Qualified
Samuel Potassium	9696 Blackberry St.	Oct 11	Qualified
Samuel Sodium	9797 Elderberry St.	Oct 11	Qualified
Samuel Magnesium	9898 Mulberry St.	Oct 11	Qualified
Samuel Silicon	9999 Currant St.	Oct 11	Qualified

POLLING SUB-DIVISION NO. 3

Comprising Sections 7, 8 and 9, and 12 to 14, Sec. 4, and Boundary Lots 10 to 17, inclusive.

PART 1.—List of Persons entitled to Vote at Elections to the Legislative Assembly and Municipal Elections.

NAME	RESIDENCE	DATE	STATUS
Amey W. G.	101 Main St.	Oct 11	Qualified
Amey W. G.	202 Elm St.	Oct 11	Qualified
Amey W. G.	303 Oak St.	Oct 11	Qualified
Amey W. G.	404 Pine St.	Oct 11	Qualified
Amey W. G.	505 Cedar St.	Oct 11	Qualified
Amey W. G.	606 Birch St.	Oct 11	Qualified
Amey W. G.	707 Spruce St.	Oct 11	Qualified
Amey W. G.	808 Willow St.	Oct 11	Qualified
Amey W. G.	909 Ash St.	Oct 11	Qualified
Amey W. G.	1010 Hickory St.	Oct 11	Qualified
Amey W. G.	1111 Maple St.	Oct 11	Qualified
Amey W. G.	1212 Poplar St.	Oct 11	Qualified
Amey W. G.	1313 Sycamore St.	Oct 11	Qualified
Amey W. G.	1414 Chestnut St.	Oct 11	Qualified
Amey W. G.	1515 Walnut St.	Oct 11	Qualified
Amey W. G.	1616 Olive St.	Oct 11	Qualified
Amey W. G.	1717 Pear St.	Oct 11	Qualified
Amey W. G.	1818 Peach St.	Oct 11	Qualified
Amey W. G.	1919 Plum St.	Oct 11	Qualified
Amey W. G.	2020 Cherry St.	Oct 11	Qualified
Amey W. G.	2121 Apple St.	Oct 11	Qualified
Amey W. G.	2222 Banana St.	Oct 11	Qualified
Amey W. G.	2323 Orange St.	Oct 11	Qualified
Amey W. G.	2424 Lemon St.	Oct 11	Qualified
Amey W. G.	2525 Lime St.	Oct 11	Qualified
Amey W. G.	2626 Grape St.	Oct 11	Qualified
Amey W. G.	2727 Strawberry St.	Oct 11	Qualified
Amey W. G.	2828 Raspberry St.	Oct 11	Qualified
Amey W. G.	2929 Blueberry St.	Oct 11	Qualified
Amey W. G.	3030 Blackberry St.	Oct 11	Qualified
Amey W. G.	3131 Elderberry St.	Oct 11	Qualified
Amey W. G.	3232 Mulberry St.	Oct 11	Qualified
Amey W. G.	3333 Currant St.	Oct 11	Qualified
Amey W. G.	3434 Raspberry St.	Oct 11	Qualified
Amey W. G.	3535 Strawberry St.	Oct 11	Qualified
Amey W. G.	3636 Blackberry St.	Oct 11	Qualified
Amey W. G.	3737 Elderberry St.	Oct 11	Qualified
Amey W. G.	3838 Mulberry St.	Oct 11	Qualified
Amey W. G.	3939 Currant St.	Oct 11	Qualified
Amey W. G.	4040 Raspberry St.	Oct 11	Qualified
Amey W. G.	4141 Strawberry St.	Oct 11	Qualified
Amey W. G.	4242 Blackberry St.	Oct 11	Qualified
Amey W. G.	4343 Elderberry St.	Oct 11	Qualified
Amey W. G.	4444 Mulberry St.	Oct 11	Qualified
Amey W. G.	4545 Currant St.	Oct 11	Qualified
Amey W. G.	4646 Raspberry St.	Oct 11	Qualified
Amey W. G.	4747 Strawberry St.	Oct 11	Qualified
Amey W. G.	4848 Blackberry St.	Oct 11	Qualified
Amey W. G.	4949 Elderberry St.	Oct 11	Qualified
Amey W. G.	5050 Mulberry St.	Oct 11	Qualified
Amey W. G.	5151 Currant St.	Oct 11	Qualified
Amey W. G.	5252 Raspberry St.	Oct 11	Qualified
Amey W. G.	5353 Strawberry St.	Oct 11	Qualified
Amey W. G.	5454 Blackberry St.	Oct 11	Qualified
Amey W. G.	5555 Elderberry St.	Oct 11	Qualified
Amey W. G.	5656 Mulberry St.	Oct 11	Qualified
Amey W. G.	5757 Currant St.	Oct 11	Qualified
Amey W. G.	5858 Raspberry St.	Oct 11	Qualified
Amey W. G.	5959 Strawberry St.	Oct 11	Qualified
Amey W. G.	6060 Blackberry St.	Oct 11	Qualified
Amey W. G.	6161 Elderberry St.	Oct 11	Qualified
Amey W. G.	6262 Mulberry St.	Oct 11	Qualified
Amey W. G.	6363 Currant St.	Oct 11	Qualified
Amey W. G.	6464 Raspberry St.	Oct 11	Qualified
Amey W. G.	6565 Strawberry St.	Oct 11	Qualified
Amey W. G.	6666 Blackberry St.	Oct 11	Qualified
Amey W. G.	6767 Elderberry St.	Oct 11	Qualified
Amey W. G.	6868 Mulberry St.	Oct 11	Qualified
Amey W. G.	6969 Currant St.	Oct 11	Qualified
Amey W. G.	7070 Raspberry St.	Oct 11	Qualified
Amey W. G.	7171 Strawberry St.	Oct 11	Qualified
Amey W. G.	7272 Blackberry St.	Oct 11	Qualified
Amey W. G.	7373 Elderberry St.	Oct 11	Qualified
Amey W. G.	7474 Mulberry St.	Oct 11	Qualified
Amey W. G.	7575 Currant St.	Oct 11	Qualified
Amey W. G.	7676 Raspberry St.	Oct 11	Qualified
Amey W. G.	7777 Strawberry St.	Oct 11	Qualified
Amey W. G.	7878 Blackberry St.	Oct 11	Qualified
Amey W. G.	7979 Elderberry St.	Oct 11	Qualified
Amey W. G.	8080 Mulberry St.	Oct 11	Qualified
Amey W. G.	8181 Currant St.	Oct 11	Qualified
Amey W. G.	8282 Raspberry St.	Oct 11	Qualified
Amey W. G.	8383 Strawberry St.	Oct 11	Qualified
Amey W. G.	8484 Blackberry St.	Oct 11	Qualified
Amey W. G.	8585 Elderberry St.	Oct 11	Qualified
Amey W. G.	8686 Mulberry St.	Oct 11	Qualified
Amey W. G.	8787 Currant St.	Oct 11	Qualified
Amey W. G.	8888 Raspberry St.	Oct 11	Qualified
Amey W. G.	8989 Strawberry St.	Oct 11	Qualified
Amey W. G.	9090 Blackberry St.	Oct 11	Qualified
Amey W. G.	9191 Elderberry St.	Oct 11	Qualified
Amey W. G.	9292 Mulberry St.	Oct 11	Qualified
Amey W. G.	9393 Currant St.	Oct 11	Qualified
Amey W. G.	9494 Raspberry St.	Oct 11	Qualified
Amey W. G.	9595 Strawberry St.	Oct 11	Qualified
Amey W. G.	9696 Blackberry St.	Oct 11	Qualified
Amey W. G.	9797 Elderberry St.	Oct 11	Qualified
Amey W. G.	9898 Mulberry St.	Oct 11	Qualified
Amey W. G.	9999 Currant St.	Oct 11	Qualified

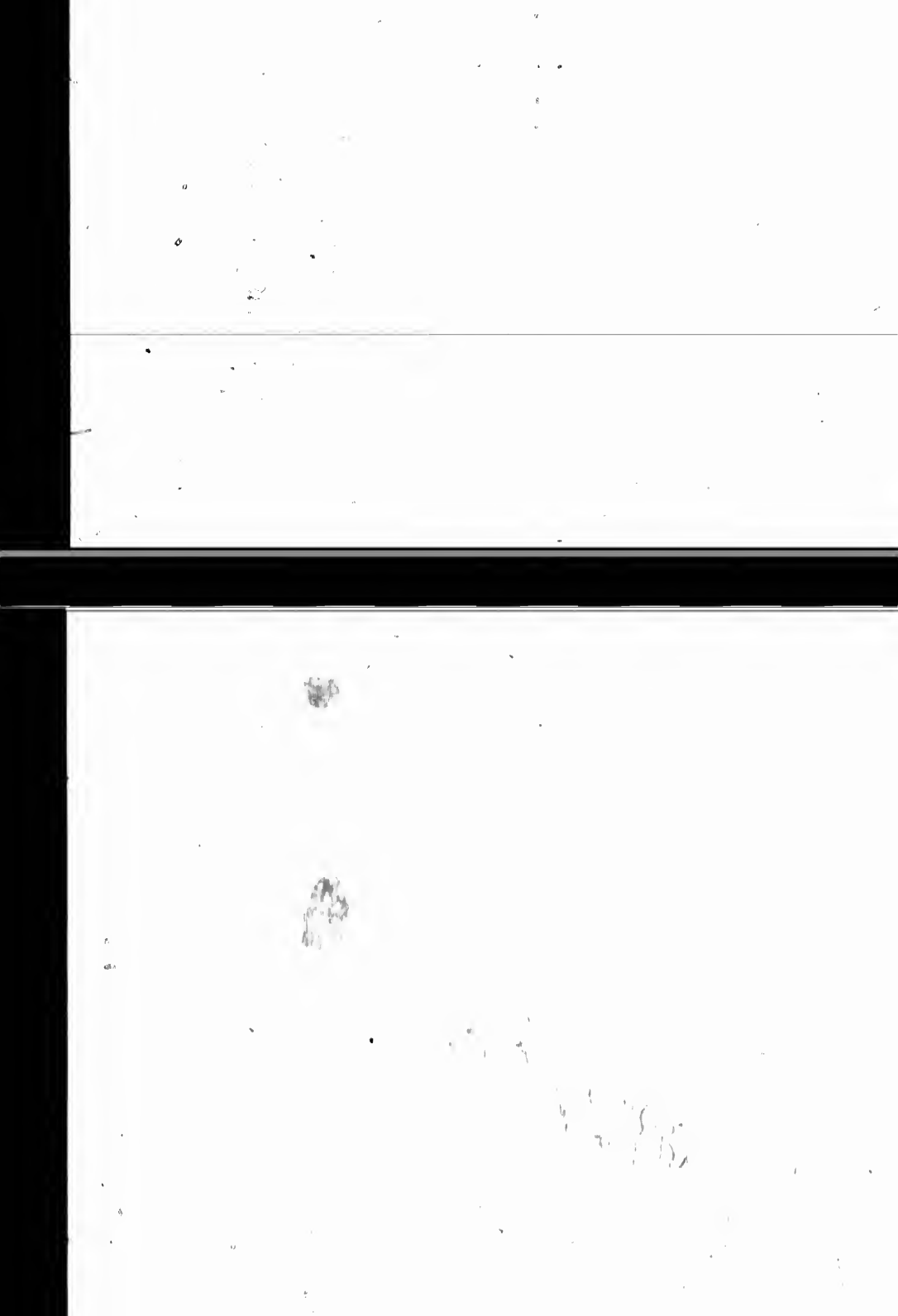
No.	Name	Address	City	State	Zip
1	John Doe	123 Main St	New York	NY	10001
2	Jane Smith	456 Elm St	Los Angeles	CA	90001
3	Robert Johnson	789 Oak St	Chicago	IL	60601
4	Mary White	101 Pine St	Houston	TX	77001
5	David Brown	202 Cedar St	Phoenix	AZ	85001
6	Susan Green	303 Birch St	Philadelphia	PA	19101
7	Michael Black	404 Spruce St	San Antonio	TX	78101
8	Elizabeth Taylor	505 Willow St	Dallas	TX	75201
9	James Wilson	606 Ash St	San Diego	CA	92101
10	Patricia Moore	707 Hickory St	Austin	TX	78701
11	Christopher Lee	808 Magnolia St	Jacksonville	FL	32201

The image shows a table with approximately 6 columns and 10 rows. The content is almost entirely obscured by noise and low contrast. Some faint, illegible markings are visible within the cells, but no text or data can be reliably extracted.

	1	2	3	4
1				
2				
3				
4				
5				
6				
7				
8				
9				
10				
11				
12				
13				
14				
15				
16				
17				
18				
19				
20				
21				
22				
23				
24				
25				
26				
27				
28				
29				
30				
31				
32				
33				
34				
35				
36				
37				
38				
39				
40				
41				
42				
43				
44				
45				
46				
47				
48				
49				
50				

TABLE 1. SUMMARY OF DATA FOR THE 50 OBSERVATIONS.











Date	Description	Debit	Credit
1880			
Jan 1	Balance		100.00
Jan 15	Wages	50.00	
Jan 30	Expenses	20.00	
Feb 15	Income		75.00
Feb 28	Expenses	15.00	
Mar 15	Wages	60.00	
Mar 31	Income		80.00
Apr 15	Expenses	30.00	
Apr 30	Wages	40.00	
May 15	Income		90.00
May 31	Expenses	25.00	
Jun 15	Wages	55.00	
Jun 30	Income		70.00
Jul 15	Expenses	18.00	
Jul 31	Wages	45.00	
Aug 15	Income		85.00
Aug 31	Expenses	22.00	
Sep 15	Wages	50.00	
Sep 30	Income		78.00
Oct 15	Expenses	16.00	
Oct 31	Wages	48.00	
Nov 15	Income		82.00
Nov 30	Expenses	20.00	
Dec 15	Wages	52.00	
Dec 31	Income		76.00
Total		600.00	600.00



