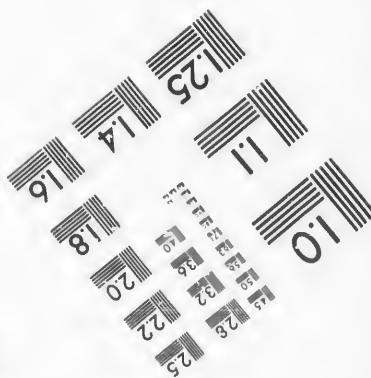
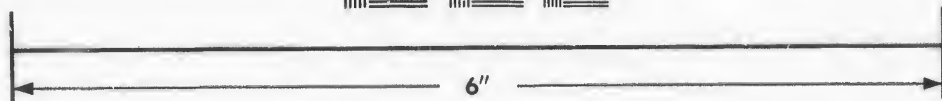
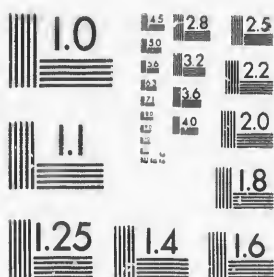


IMAGE EVALUATION TEST TARGET (MT-3)



Photographic
Sciences
Corporation

23 WEST MAIN STREET
WEBSTER, N.Y. 14580
(716) 872-4503

**CIHM/ICMH
Microfiche
Series.**

**CIHM/ICMH
Collection de
microfiches.**



Canadian Institute for Historical Microreproductions / Institut canadien de microreproductions historiques

© 1987

Technical and Bibliographic Notes/Notes techniques et bibliographiques

The Institute has attempted to obtain the best original copy available for filming. Features of this copy which may be bibliographically unique, which may alter any of the images in the reproduction, or which may significantly change the usual method of filming, are checked below.

- ☐ Coloured covers/
Couverture de couleur
- ☐ Covers damaged/
Couverture endommagée
- ☐ Covers restored and/or laminated/
Couverture restaurée et/ou pelliculée
- ☐ Cover title missing/
Le titre de couverture manque
- ☐ Coloured maps/
Cartes géographiques en couleur
- ☐ Coloured ink (i.e. other than blue or black)/
Encre de couleur (i.e. autre que bleue ou noire)
- ☐ Coloured plates and/or illustrations/
Planches et/ou illustrations en couleur
- ☐ Bound with other material/
Relié avec d'autres documents
- ☐ Tight binding may cause shadows or distortion
along interior margin/
La reliure serrée peut causer de l'ombre ou de la
distorsion le long de la marge intérieure
- ☐ Blank leaves added during restoration may
appear within the text. Whenever possible, these
have been omitted from filming/
Il se peut que certaines pages blanches ajoutées
lors d'une restauration apparaissent dans le texte,
mais, lorsque cela était possible, ces pages n'ont
pas été filmées.

☒ Additional comments:/
Commentaires supplémentaires:

[Printed ephemera] 1 sheet (verso blank)

L'Institut a microfilmé le meilleur exemplaire qu'il lui a été possible de se procurer. Les détails de cet exemplaire qui sont peut-être uniques du point de vue bibliographique, qui peuvent modifier une image reproduite, ou qui peuvent exiger une modification dans la méthode normale de filmage sont indiqués ci-dessous.

- ☐ Coloured pages/
Pages de couleur
- ☐ Pages damaged/
Pages endommagées
- ☐ Pages restored and/or laminated/
Pages restaurées et/ou pelliculées
- ☒ Pages discoloured, stained or foxed/
Pages décolorées, tachetées ou piquées
- ☐ Pages detached/
Pages détachées
- ☒ Showthrough/
Transparence
- ☐ Quality of print varies/
Qualité inégale de l'impression
- ☐ Includes supplementary material/
Comprend du matériel supplémentaire
- ☐ Only edition available/
Seule édition disponible
- ☐ Pages wholly or partially obscured by errata
slips, tissues, etc., have been refilmed to
ensure the best possible image/
Les pages totalement ou partiellement
obscurcies par un feuillet d'errata, une pelure,
etc., ont été filmées à nouveau de façon à
obtenir la meilleure image possible.

This item is filmed at the reduction ratio checked below/
Ce document est filmé au taux de réduction indiqué ci-dessous.

10X	14X	18X	22X	26X	30X
<input type="checkbox"/>	<input type="checkbox"/>	<input type="checkbox"/>	<input type="checkbox"/>	<input checked="" type="checkbox"/>	<input type="checkbox"/>
12X	16X	20X	24X	28X	32X

The copy filmed here has been reproduced thanks to the generosity of:

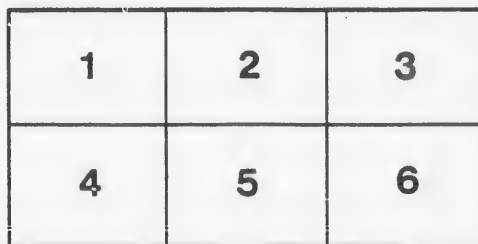
D. B. Weldon Library
University of Western Ontario
(Regional History Room)

The images appearing here are the best quality possible considering the condition and legibility of the original copy and in keeping with the filming contract specifications.

Original copies in printed paper covers are filmed beginning with the front cover and ending on the last page with a printed or illustrated impression, or the back cover when appropriate. All other original copies are filmed beginning on the first page with a printed or illustrated impression, and ending on the last page with a printed or illustrated impression.

The last recorded frame on each microfiche shall contain the symbol → (meaning "CONTINUED"), or the symbol ∇ (meaning "END"), whichever applies.

Maps, plates, charts, etc., may be filmed at different reduction ratios. Those too large to be entirely included in one exposure are filmed beginning in the upper left hand corner, left to right and top to bottom, as many frames as required. The following diagrams illustrate the method:



L'exemplaire filmé fut reproduit grâce à la générosité de:

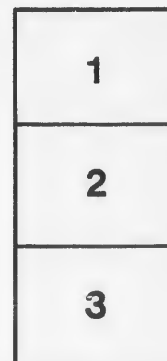
D. B. Weldon Library
University of Western Ontario
(Regional History Room)

Les images suivantes ont été reproduites avec le plus grand soin, compte tenu de la condition et de la netteté de l'exemplaire filmé, et en conformité avec les conditions du contrat de filmage.

Les exemplaires originaux dont la couverture en papier est imprimée sont filmés en commençant par le premier plat et en terminant soit par la dernière page qui comporte une empreinte d'impression ou d'illustration, soit par le second plat, selon le cas. Tous les autres exemplaires originaux sont filmés en commençant par la première page qui comporte une empreinte d'impression ou d'illustration et en terminant par la dernière page qui comporte une telle empreinte.

Un des symboles suivants apparaîtra sur la dernière image de chaque microfiche, selon le cas: le symbole → signifie "A SUIVRE", le symbole ∇ signifie "FIN".

Les cartes, planches, tableaux, etc., peuvent être filmés à des taux de réduction différents. Lorsque le document est trop grand pour être reproduit en un seul cliché, il est filmé à partir de l'angle supérieur gauche, de gauche à droite, et de haut en bas, en prenant le nombre d'images nécessaire. Les diagrammes suivants illustrent la méthode.



Proclam

Electoral District of Cen

Public Notice is hereby given to the Electors of the Electoral D
Writ to me directed, and bearing date the Seventeenth Day of August

TOWN HALL, in SEAFORTH, on the Tenth

From Noon until two of the clock in the Afternoon, for the purpose of
Commons of Canada; and that in case a poll be demanded and allowe
opened on the SEVNTTEENTH day of the month of SEPTEMBER,
till Five of the clock in the Afternoon, in each of the Polling Districts,

TUCKERS

For Polling District No. 1, Tuckersmith—Consisting of Lots One to Fifteen inclusive, in the First,
Second, Third and Fourth Concessions, Huron Road Survey; at School House No. 8, Egmondville.

For Polling District No. 2, Tuckersmith—Consisting of that part of the Township west of side line
between the Fifteenth and Sixteenth Lots, and north of the Mill Road; at School House No. 6, Con.
2, H. R. S.

For
L. R. S.
H. R. S.
For
Tenth a
Concess

SEAFOR

For Polling District No. 1, Seaforth—Consisting of all west of Main street and south of St. John
street; at the Town Hall.

For Polling District No. 2, Seaforth—Consisting of all west of Main street and north of St. John

street;
Fo
at Sam

GODERICH

For Polling District No. 1, Goderich Town—Consisting of that part on east side of South street to
the square, thence to Kingston street, along the west of Kingston street to Huron Road, along Huron
Road to Town Boundary; at house on Lot 174, Kingston street.

For Polling District No. 2, Goderich Town—Along Huron Road and Kingston street to square,
thence to East street, along south side of East street to Boundary; at Council Chamber, East street.

For Polling District No. 3, Goderich Town—Consisting of that part on north side of East street to
square, east side of North street to Nelson street, south side of Nelson street to Boundary; at Fire-
men's Hall, East street.

For
street t
Fo
street a
Fo
square
Road to
Fo
the we

COLBOF

For Polling District No. 1, Colborne—Consisting of Maitland concession, Ben Miller village, Fall's

thence to East street, along south side of East street to Boundary; at Council Chamber, East street.

For
and te
squa

Information!

of Centre Huron, to wit:

The Electoral District aforesaid that, in obedience to Her Majesty's
th Day of August, 1878, I require the presence of the said Electors at the

the Tenth Day of the Month of September,

for the purpose of nominating a person to represent them in the House of
unded and allowed in the manner by law prescribed, such poll will be
SEPTEMBER, in the year 1878, from the hour of Nine in the morning
Polling Districts, that is to say:

TUCKERSMITH.

in the First,
mondville.

t of side line
No. 6, Con.

For Polling District No. 3, Tuckersmith—Consisting of the First, Second and Third Concessions,
L. R. S., south of the Mill Road, and the Twelfth, Thirteenth, Fourteenth and Fifteenth Concessions,
H. R. S.; at School House No. 2, Con. 3, L. R. S.

For Polling District No. 4, Tuckersmith—consisting of the Fifth, Sixth, Seventh, Eighth, Ninth,
Tenth and Eleventh Concessions, H. R. S., and that part of the Fourth, Fifth, Sixth and Seventh
Concessions, L. R. S., south of the Mill Road; at School House No. 9, Con. 9, H. R. S.

SEAFORTH.

of St. John

of St. John

street; at E. Cash's store.

For Polling District No. 3, Seaforth—Consisting of all that portion of Seaforth east of Main street;
at Samuel Stark's store.

GODERICH TOWN.

nth street to
along Huron

et to square,
East street.

East street to
ry; at Fire-

For Polling District No. 4, Goderich Town—South side Nelson street to North street, along North
street to Boundary; at S. Pollock's office, Victoria street.

For Polling District No. 5, Goderich Town—West side of North street to square, thence to West
street along the square, north side of West street to Boundary; at D. Gordon's shop, West street.

For Polling District No. 6, Goderich Town—Along south side of West street to square, along
square to the west side of South street, thence to Britannia Road, along the north side of Britannia
Road to Boundary; at Gordon & McBrien's shop, Waterloo street.

For Polling District No. 7, Goderich Town—South side of Britannia road to South street, along
the west side of South street to Boundary; at Luke Ellard's shop, Britannia road.

COLBORNE.

illage, Fall's
x seven and

East street.

For Polling District No. 3, Colborne—Consisting of block F, the fifth, sixth, seventh, eighth, ninth
and tenth concessions, in the eastern and western divisions, also lot one on the eleventh concession,

For Polling District No. 6, Goderich Town—Along south side of West street to square, along
square to the west side of South street, thence to Britannia Road, along the north side of Britannia

thence to East street, along south side of East street to Boundary; at Council Chamber, East street.

For Polling District No. 3, Goderich Town—Consisting of that part on north side of East street to square, east side of North street to Nelson street, south side of Nelson street to Boundary; at Firemen's Hall, East street.

COLBORNE

For Polling District No. 1, Colborne—Consisting of Maitland concession, Ben Miller village, Full's Reserve, concessions one, two, three and four in the eastern division, and lots five, six, seven and eight on the first, second, third and fourth concessions in the western division, and Lot 9, Con. 3; at Headle's shop, Ben Miller Village.

For Polling District No. 2, Colborne—Consisting of blocks A, B, C, D, E and G, also Lots one, two, three and four in the first, second, third and fourth concessions, western division; at Temperance Hall, Maitlandville.

HULLETT

For Polling District No. 1, Hullett—Bounded on the south by the Town Line of Hullett and Tuckersmith, on the east by the Town Line of Hullett and McKillop, on the north by the Blind Line between concessions seven and eight, and on the west by side line fifteen and sixteen; at Temperance Hall, Kinburn.

For Polling District No. 2, Hullett—Bounded on the south by the Blind Line between concessions seven and eight, on the east by the Town Line of Hullett and McKillop, on the north by the Town Line of Hullett and Morris, and on the west by side line fifteen and sixteen; at School House, Section No. 6.

For Polling District No. 3, Hullett—Bounded on the south by the town line of Hullett and Tuckersmith, on the east by side line Fifteen and Sixteen, on the north by the blind line between Concessions Seven and Eight, on the west by side line Twenty-five and Twenty-six, and on the south west by the town of Clinton; at School House, Section No. 2.

McKILLOP

For Polling District No. 1, McKillop—From lot One to lot Nine, inclusive, from the first concession to the Fourteenth, inclusive; at Roderick McRae's House, lot 1, concession 7.

For Polling District No. 2, McKillop—From lot Ten to Seventeen, inclusive, from concession one to Fourteen, inclusive; at School House, Section No. 6.

For Polling District No. 3, McKillop—From lot Eighteen to Twenty-six, inclusive, from concession one to eight, inclusive; at School House, Section No. 4.

GREY

For Polling District No. 1, Grey—Consisting of lots one to forty, inclusive, in concession one; and lots One to Twenty inclusive, in concessions two to six, inclusive; at School House, Section No. 4.

For Polling District No. 2, Grey—Consisting of lots One to Twenty, inclusive, in concessions seven to twelve, inclusive; at School House, Section No. 7.

For Polling District No. 3, Grey—Consisting of lots One to Twenty, inclusive, in concessions thirteen to eighteen, inclusive; at School House, Section No. 2.

BRUSSELS

For Polling District No 1, Brussels—Consisting of all that part of said village East of Turnberry Street and

And further that on the Twenty-first day of September, at 11 A. M. sum up the votes given for the several Candidates, and return as electors. Of which all persons are hereby required to take Notice, and give their votes. Given under my hand, at Goderich, this Twenty-third day of August.

JAMES

HURON EXPOSITOR PRINT,

East street.
 East street to
 ay; at Fire-
 For Polling District No. 6, Goderich Town—Along south side of West street to square, along
 square to the west side of South street, thence to Britannia Road, along the north side of Britannia
 Road to Boundary; at Gordon & McBrien's shop, Waterloo street.
 For Polling District No. 7, Goderich Town—South side of Britannia road to South street, along
 the west side of South street to Boundary; at Luke Ellard's shop, Britannia road.

COLBORNE.

For Polling District No. 3, Colborne—Consisting of block F, the fifth, sixth, seventh, eighth, ninth
 and tenth concessions, in the eastern and western divisions, also lot one on the eleventh concession,
 eastern division; at Town Hall, Smith's Hill.
 For Polling District No. 4, Colborne—Consisting of the Lake Road, east and west, and Lake Shore
 from lot one to Boundary Line, also the eleventh, twelfth, thirteenth and fourteenth concessions in the
 western division; at Temperance Hall, Lebnun.

HULLETT.

For Polling District No. 4, Hullett—Bounded on the south by the blind line between concessions
 Seven and Eight, on the east by side line Fifteen and Sixteen, on the north by the town line of Hullett
 and Morris, and Hullett and East Wawanosh, and on the west by side line Twenty-five and Twenty-
 six; at Brunsdon's carriage shop, Londesborough.
 For Polling District No. 5, Hullett—Bounded on the south-west by the town line of Hullett and
 Goderich township, on the east by side line Twenty-five and Twenty-six, on the north by the town
 line of Hullett and East Wawanosh, and on the west by side line Thirty-five and Thirty-six; at
 Temperance Hall, Londesborough.
 For Polling District No. 6, Hullett—Bounded on the south by the Maitland River, and the town
 line of Hullett and Goderich Township, on the east by side road Thirty-five and Thirty-six, and on
 the north by the town line of Hullett and East Wawanosh; at School House, Section No. 9.

McKILLOP.

For Polling District No. 4, McKillop—From lot Eighteen to twenty six, inclusive, in concessions
 nine to fourteen, inclusive; at School House, Section No. 10.
 For Polling District No. 5, McKillop—From lot twenty-seven to thirty-five, inclusive, from con-
 cession one to seven, inclusive; at School House, Section No. 2.
 For Polling District No. 6, McKillop—From lot twenty-seven to lot thirty-five, inclusive, from
 concession eight to concession fourteen, inclusive; at John Scarlet's house, lot 27. concession 13.

GREY.

For Polling District No. 4, Grey—Consisting of lots Twenty-one to Thirty-five, inclusive in conces-
 sions nine to eighteen, inclusive; at School House, Section No. 10.
 For Polling District No. 5, Grey—Consisting of lots Forty-one to Seventy, inclusive, in conces-
 sion one; and lots Twenty-one to Thirty-five, inclusive, in concessions two to eight, inclusive; at School
 House, Section No. 11.

BRUSSELS.

Turnberry Street and formerly in the township of Grey; at the office of the Brussels Post.

number, at 11 A. M., at my office, Goderich, I shall open the ballot boxes,
 and return as elected the one having the majority of votes.
 Notice, and govern themselves accordingly.
 third day of August, in the year 1878.

JAMES DICKSON, Returning Officer.

