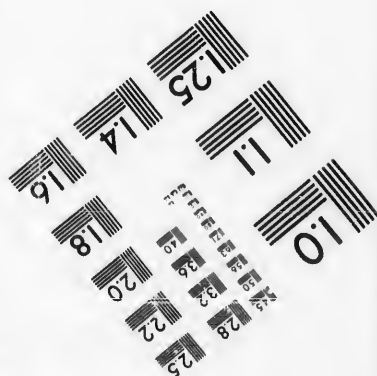
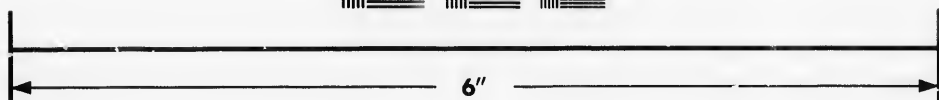
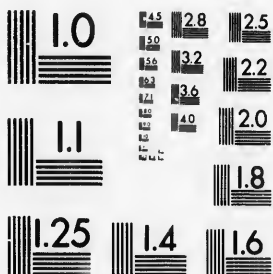


**IMAGE EVALUATION
TEST TARGET (MT-3)**



**Photographic
Sciences
Corporation**

23 WEST MAIN STREET
WEBSTER, N.Y. 14580
(716) 672-4503

15
12
13
16
18
20
22
25
28

**CIHM/ICMH
Microfiche
Series.**

**CIHM/ICMH
Collection de
microfiches.**



Canadian Institute for Historical Microreproductions / Institut canadien de microreproductions historiques

10
11
12
13
14

© 1986

Technical and Bibliographic Notes/Notes techniques et bibliographiques

The Institute has attempted to obtain the best original copy available for filming. Features of this copy which may be bibliographically unique, which may alter any of the images in the reproduction, or which may significantly change the usual method of filming, are checked below.

L'Institut a microfilmé le meilleur exemplaire qu'il lui a été possible de se procurer. Les détails de cet exemplaire qui sont peut-être uniques du point de vue bibliographique, qui peuvent modifier une image reproduite, ou qui peuvent exiger une modification dans la méthode normale de filmage sont indiqués ci-dessous.

- Coloured covers/
Couverture de couleur
- Covers damaged/
Couverture endommagée
- Covers restored and/or laminated/
Couverture restaurée et/ou pelliculée
- Cover title missing/
Le titre de couverture manque
- Coloured maps/
Cartes géographiques en couleur
- Coloured ink (i.e. other than blue or black)/
Encre de couleur (i.e. autre que bleue ou noire)
- Coloured plates and/or illustrations/
Planches et/ou illustrations en couleur
- Bound with other material/
Relié avec d'autres documents
- Tight binding may cause shadows or distortion along interior margin/
La reliure serrée peut causer de l'ombre ou de la distorsion le long de la marge intérieure
- Blank leaves added during restoration may appear within the text. Whenever possible, these have been omitted from filming.
Il se peut que certaines pages blanches ajoutées lors d'une restauration apparaissent dans le texte, mais, lorsque cela était possible, ces pages n'ont pas été filmées.
- Additional comments:/
Commentaires supplémentaires:

- Coloured pages/
Pages de couleur
- Pages damaged/
Pages endommagées
- Pages restored and/or laminated/
Pages restaurées et/ou pelliculées
- Pages discoloured, stained or foxed/
Pages décolorées, tachetées ou piquées
- Pages detached/
Pages détachées
- Showthrough/
Transparence
- Quality of print varies/
Qualité inégale de l'impression
- Includes supplementary material/
Comprend du matériel supplémentaire
- Only edition available/
Seule édition disponible
- Pages wholly or partially obscured by errata slips, tissues, etc., have been refilmed to ensure the best possible image/
Les pages totalement ou partiellement obscurcies par un feuillet d'errata, une pelure, etc., ont été filmées à nouveau de façon à obtenir la meilleure image possible.

This item is filmed at the reduction ratio checked below/
Ce document est filmé au taux de réduction indiqué ci-dessous.

10X	14X	18X	22X	26X	30X
<input type="checkbox"/>	<input type="checkbox"/>	<input type="checkbox"/>	<input checked="" type="checkbox"/>	<input type="checkbox"/>	<input type="checkbox"/>
12X	16X	20X	24X	28X	32X

The copy filmed here has been reproduced thanks to the generosity of:

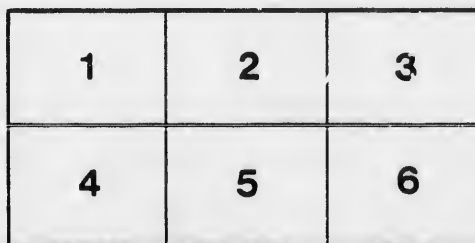
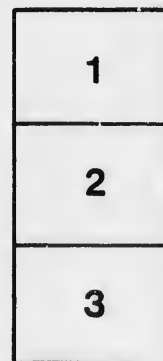
Manuscript Division
Public Archives of Canada

The images appearing here are the best quality possible considering the condition and legibility of the original copy and in keeping with the filming contract specifications.

Original copies in printed paper covers are filmed beginning with the front cover and ending on the last page with a printed or illustrated impression, or the back cover when appropriate. All other original copies are filmed beginning on the first page with a printed or illustrated impression, and ending on the last page with a printed or illustrated impression.

The last recorded frame on each microfiche shall contain the symbol \rightarrow (meaning "CONTINUED"), or the symbol ∇ (meaning "END"), whichever applies.

Maps, plates, charts, etc., may be filmed at different reduction ratios. Those too large to be entirely included in one exposure are filmed beginning in the upper left hand corner, left to right and top to bottom, as many frames as required. The following diagrams illustrate the method:



L'exemplaire filmé fut reproduit grâce à la générosité de:

Division des manuscrits
Archives publiques du Canada

Les images suivantes ont été reproduites avec le plus grand soin, compte tenu de la condition et de la netteté de l'exemplaire filmé, et en conformité avec les conditions du contrat de filmage.

Les exemplaires originaux dont la couverture en papier est imprimée sont filmés en commençant par le premier plat et en terminant soit par la dernière page qui comporte une empreinte d'impression ou d'illustration, soit par le second plat, selon le cas. Tous les autres exemplaires originaux sont filmés en commençant par la première page qui comporte une empreinte d'impression ou d'illustration et en terminant par la dernière page qui comporte une telle empreinte.

Un des symboles suivants apparaîtra sur la dernière image de chaque microfiche, selon le cas: le symbole \rightarrow signifie "A SUIVRE", le symbole ∇ signifie "FIN".

Les cartes, planches, tableaux, etc., peuvent être filmés à des taux de réduction différents. Lorsque le document est trop grand pour être reproduit en un seul cliché, il est filmé à partir de l'angle supérieur gauche, de gauche à droite, et de haut en bas, en prenant le nombre d'images nécessaire. Les diagrammes suivants illustrent la méthode.

Department of State,

Washington, March 28, 1856.

To Charles M. Pease, Esq.,
Collector of the Customs, Boston.

Sir :

It is understood that there are certain acts of the British North American Colonial Legislatures, and also, perhaps, Executive regulations, intended to prevent the wanton destruction of the fish which frequent the coasts of the Colonies, and injuries to the fishing thereon. It is deemed reasonable and desirable that both United States and British fishermen should pay a like respect to such laws and regulations, which are designed to preserve and increase the productiveness of the fisheries on those coasts. Such being the object of these laws and regulations, the observance of them is enjoined upon the citizens of the United States in like manner as they are observed by British subjects. By granting the mutual use of the inshore fisheries neither party has yielded its right to civil jurisdiction over a marine league along its coast. Its laws are as obligatory upon the citizens or subjects of the other as upon its own. The laws of the British Provinces not in conflict with the provisions of the reciprocity treaty would be as binding upon citizens of the United States within that jurisdiction as upon British subjects.

Should they be so framed or executed as to make any discrimination in favor of the British fishermen, or to impair the rights secured to American fishermen by that treaty, those injuriously affected by them will appeal to this Government for redress. In prosecuting complaints of this kind, should there be cause for doing so, they are requested to furnish the Department of State with a copy of the law or regulation which is alleged injuriously to affect their rights or to make an unfair discrimination between the fishermen of the respective countries, or with a statement of any supposed grievance in the execution of such law or regulation, in order that the matter may be arranged by the two Governments. You will make this direction known to the masters of such fishing vessels as belong to your port, in such manner as you may deem most advisable.

I am, sir, respectfully,

Your obedient servant,

W. L. MARCY.

It is believed that the principal regulations referred to above are the following, from the Revised Statutes of New Brunswick, vol. 1, title 22, chapter 101:

49

"7. The wardens of any county shall, when necessary, mark out and designate, in proper positions, 'gurry grounds,' putting up notices thereof, describing their limits and position, in the several school houses, and other most public places in the parish where the said gurry grounds are marked out, publishing the like notice in the Royal Gazette; and no person, after such posting and publication, shall cast overboard from any boat or vessel the offal of fish into the water at or near the said parish at any place except the said gurry grounds."

"12. Within the parishes of Grand Manan, West Isles, Camps Bello, Pennfield, and Saint George, in the county of Charlotte, no seine or net shall be set across the mouth of any haven, river, creek, or harbor, nor in such place extending more than one-third the distance across the same, or be within forty fathoms of each other, nor shall they be set within twenty fathoms of the shore at low-water mark."

"15. No herrings shall be taken between the 15th day of July and the 15th of October in any year, on the spawning ground at the head of Grand Manan, to commence at the eastern part of Seal Cove, at a place known as Red Point, thence extending westerly along the coast and around the southern head of Bradford's Cove, about five miles, and extending one mile from the shore; all nets or engines used for catching herring on the said ground within that period shall be seized and forfeited, and every person engaged in using the same shall be guilty of a misdemeanor, and punished accordingly."

