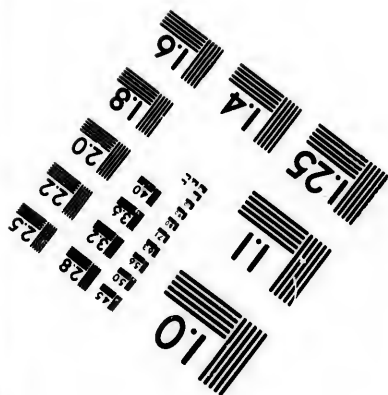
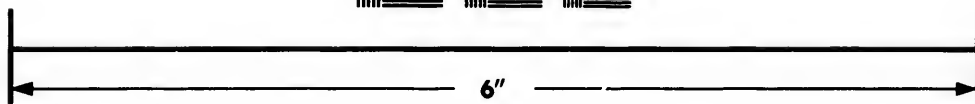
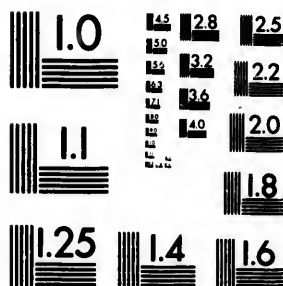


**IMAGE EVALUATION
TEST TARGET (MT-3)**



**Photographic
Sciences
Corporation**

23 WEST MAIN STREET
WEBSTER, N.Y. 14580
(716) 872-4503

**CIHM/ICMH
Microfiche
Series.**

**CIHM/ICMH
Collection de
microfiches.**



Canadian Institute for Historical Microreproductions / Institut canadien de microreproductions historiques

© 1983

Technical and Bibliographic Notes/Notes techniques et bibliographiques

The Institute has attempted to obtain the best original copy available for filming. Features of this copy which may be bibliographically unique, which may alter any of the images in the reproduction, or which may significantly change the usual method of filming, are checked below.

L'Institut a microfilmé le meilleur exemplaire qu'il lui a été possible de se procurer. Les détails de cet exemplaire qui sont peut-être uniques du point de vue bibliographique, qui peuvent modifier une image reproduite, ou qui peuvent exiger une modification dans la méthode normale de filmage sont indiqués ci-dessous.

- Coloured covers/
Couverture de couleur
- Covers damaged/
Couverture endommagée
- Covers restored and/or laminated/
Couverture restaurée et/ou pelliculée
- Cover title missing/
Le titre de couverture manque
- Coloured maps/
Cartes géographiques en couleur
- Coloured ink (i.e. other than blue or black)/
Encre de couleur (i.e. autre que bleue ou noire)
- Coloured plates and/or illustrations/
Planches et/ou illustrations en couleur
- Bound with other material/
Relié avec d'autres documents
- Tight binding may cause shadows or distortion along interior margin/
La reliure serrée peut causer de l'ombre ou de la distorsion le long de la marge intérieure
- Blank leaves added during restoration may appear within the text. Whenever possible, these have been omitted from filming/
Il se peut que certaines pages blanches ajoutées lors d'une restauration apparaissent dans le texte, mais, lorsque cela était possible, ces pages n'ont pas été filmées.
- Additional comments:/
Commentaires supplémentaires:

- Coloured pages/
Pages de couleur
- Pages damaged/
Pages endommagées
- Pages restored and/or laminated/
Pages restaurées et/ou pelliculées
- Pages discoloured, stained or foxed/
Pages décolorées, tachetées ou piquées
- Pages detached/
Pages détachées
- Showthrough/
Transparence
- Quality of print varies/
Qualité inégale de l'impression
- Includes supplementary material/
Comprend du matériel supplémentaire
- Only edition available/
Seule édition disponible
- Pages wholly or partially obscured by errata slips, tissues, etc., have been refilmed to ensure the best possible image/
Les pages totalement ou partiellement obscurcies par un feuillet d'errata, une pelure, etc., ont été filmées à nouveau de façon à obtenir la meilleure image possible.

This item is filmed at the reduction ratio checked below/
Ce document est filmé au taux de réduction indiqué ci-dessous.

10X	12X	14X	16X	18X	20X	22X	24X	26X	28X	30X	32X
<input type="checkbox"/>	<input type="checkbox"/>	<input type="checkbox"/>	<input type="checkbox"/>	<input type="checkbox"/>	<input type="checkbox"/>	<input type="checkbox"/>	<input checked="" type="checkbox"/>	<input type="checkbox"/>	<input type="checkbox"/>	<input type="checkbox"/>	<input type="checkbox"/>

The copy filmed here has been reproduced thanks to the generosity of:

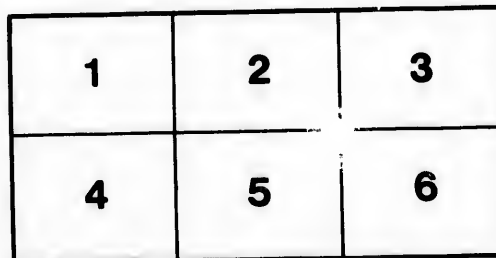
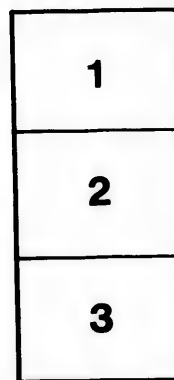
Library of Congress
Photoduplication Service

The images appearing here are the best quality possible considering the condition and legibility of the original copy and in keeping with the filming contract specifications.

Original copies in printed paper covers are filmed beginning with the front cover and ending on the last page with a printed or illustrated impression, or the back cover when appropriate. All other original copies are filmed beginning on the first page with a printed or illustrated impression, and ending on the last page with a printed or illustrated impression.

The last recorded frame on each microfiche shall contain the symbol \rightarrow (meaning "CONTINUED"), or the symbol ∇ (meaning "END"), whichever applies.

Maps, plates, charts, etc., may be filmed at different reduction ratios. Those too large to be entirely included in one exposure are filmed beginning in the upper left hand corner, left to right and top to bottom, as many frames as required. The following diagrams illustrate the method:



L'exemplaire filmé fut reproduit grâce à la générosité de:

Library of Congress
Photoduplication Service

Les images suivantes ont été reproduites avec le plus grand soin, compte tenu de la condition et de la netteté de l'exemplaire filmé, et en conformité avec les conditions du contrat de filmage.

Les exemplaires originaux dont la couverture en papier est imprimée sont filmés en commençant par le premier plat et en terminant soit par la dernière page qui comporte une empreinte d'impression ou d'illustration, soit par le second plat, selon le cas. Tous les autres exemplaires originaux sont filmés en commençant par la première page qui comporte une empreinte d'impression ou d'illustration et en terminant par la dernière page qui comporte une telle empreinte.

Un des symboles suivants apparaîtra sur la dernière image de chaque microfiche, selon le cas: le symbole \rightarrow signifie "A SUIVRE", le symbole ∇ signifie "FIN".

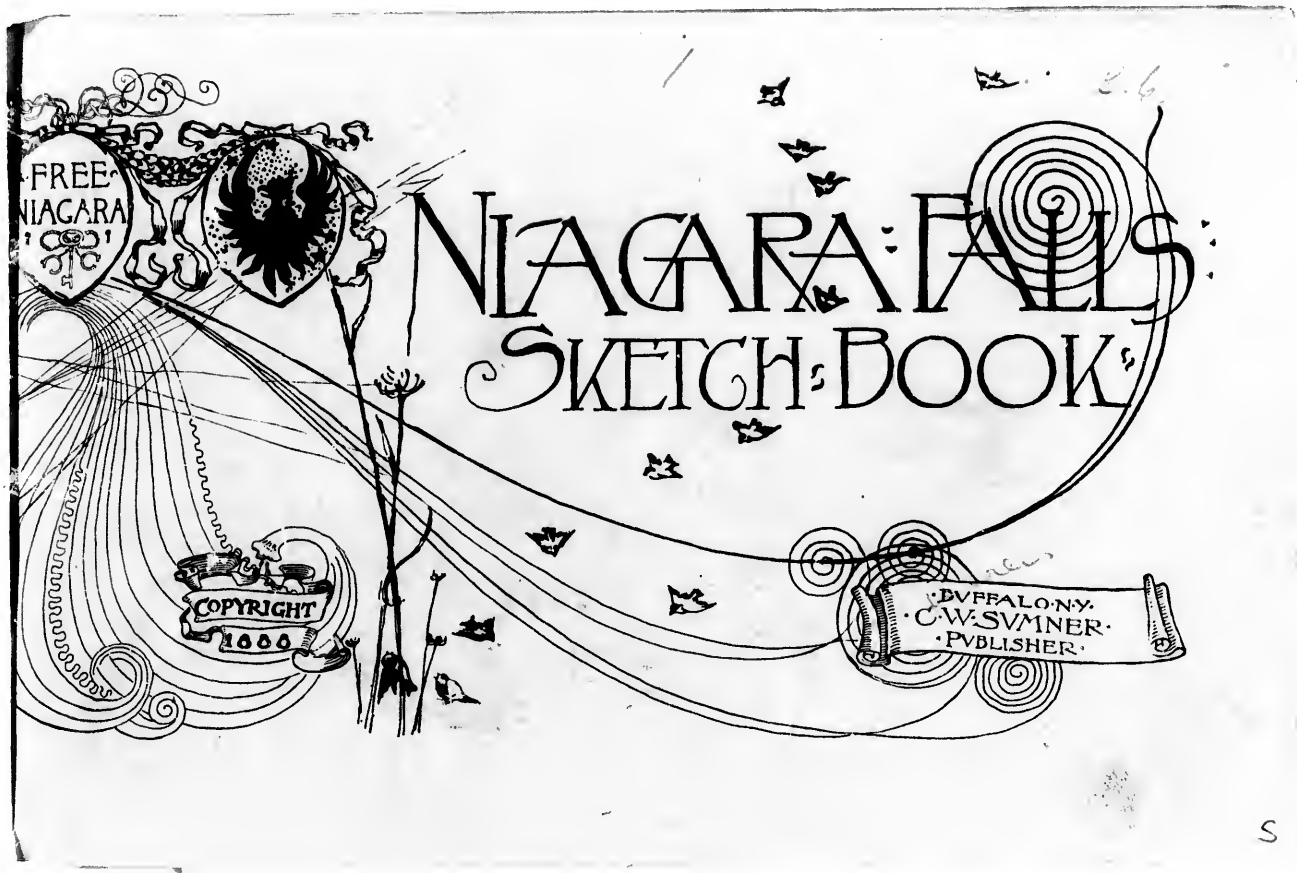
Les cartes, planches, tableaux, etc., peuvent être filmés à des taux de réduction différents. Lorsque le document est trop grand pour être reproduit en un seul cliché, il est filmé à partir de l'angle supérieur gauche, de gauche à droite, et de haut en bas, en prenant le nombre d'images nécessaire. Les diagrammes suivants illustrent la méthode.

errata
to

e pelure,
on à









NIAGARA
GENERAL VIEW

4
3291



NIAGARA FALLS

SKETCH-BOOK

LIBRARY OF CONGRESS
COPYRIGHT
JUN 11 1888
CITY 8703

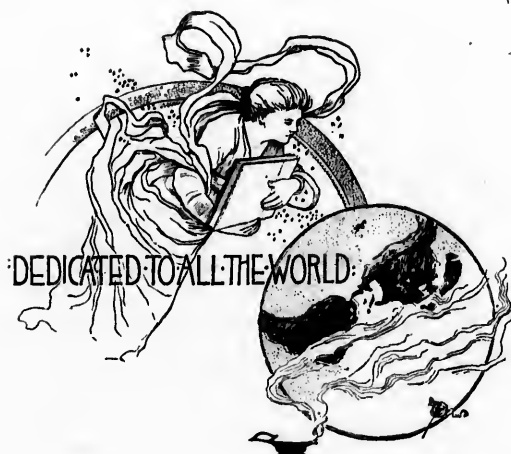
ILLUSTRATED AND
PUBLISHED BY
C. W. SUMNER
MDCCLXXXVIII
BUFFALO N.Y.



ILLUSTRATIONS DRAWN FROM SKETCHES BY THE PUBLISHER
AND PHOTOGRAPHS BY GEO. BARKER NIAGARA FALLS.

F127
.N8 N87

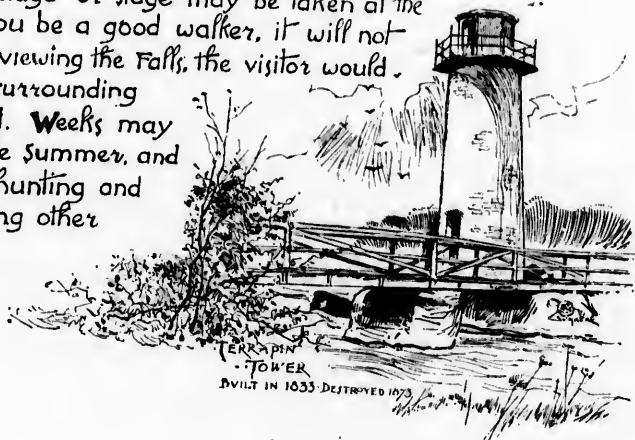
PRESS OF
MARTIN BROS.
BUFFALO, N. Y.



SPARE THE
TREES &
SHRUBS.

HINTS

Arriving at Niagara, see the Falls first, and a route, as good as any, is given in this book, more especially if here for a few hours only. A carriage or stage may be taken at the depot, on the other hand, if you be a good walker, it will not prove too tiresome. If after viewing the Falls, the visitor would extend his excursions into the surrounding country he will be well repaid. Weeks may be spent here pleasantly in the summer, and in the proper seasons, good hunting and fishing can be counted, among other attractions.



TERRAPIN
TOWER
BUILT IN 1833 DESTROYED 1873



AMERICAN FALLS



Valley of
Great Falls



Rock of Ages
& Hurricane



Let's go to the Falls!

Niagara is a household word the world over, of Indian origin, and supposed to have been borrowed from the Iroquois, meaning the Thunderer of the Waters.



old suspension bridge

At first sight, strangers are sometimes disappointed, the second view frequently proving more expressive, and the longer one tarries the more he enjoys and appreciates. The Falls when seen from above, do not show their true height, but let the visitor go below if he would obtain a correct impression of this stupendous cataract.



-below-



Gives a- things



In Falls





Arrival of an Excursion Train
at N.Y.C. Depot



Drive you all found for



Other Excursion Visitors





1875

Ten times as much water flows over the Canadian as American Fall, the spray rising high in the Heavens like smoke, can be seen at a great distance.

Moonlight views are weird and fascinating, and Niagara in winter is a scene which cannot be described. The winter bridges are accumulations of ice which fill the gorge below the Falls, often 30ft thick;



Dock of the Falls N.Y.



Seeing the Falls



Falls N.Y. From NYC Depot





At the
Casino
Restaurant



AMERICAN RAPIDS from the
Bridge



Boat Island Bridge



Sketch of
River



Its upper surface being of course very uneven, they can be crossed with perfect safety, and sometimes extend up and down stream half a mile. The freezing of spray upon the trees, forms ice very hard and white, which glistens in the sunlight with great brilliancy. No such scenery can be found elsewhere.

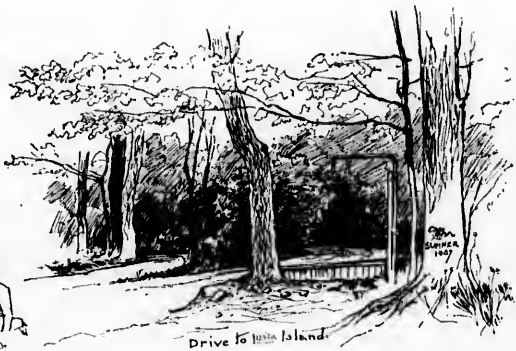
While crossing the first bridge leading to the Goat Island group, consisting of Goat, Bath, Luna, Three Sister Is., and Terrapin rocks; we obtain a fine view of the American rapids, and reach Bath Island, over a second bridge, and we are on Goat Island, which with above named, divides the river and forms two falls, the American 800 ft and Horseshoe 2000 ft wide. Up the hill, turn to the right, and after passing through the woods we behold one of the most charming sights of NIAGARA. Down the bank and



Squaws with Beadwork



The Hill - Superintendent's Office



Drive to Luna Island



up the bank



To Luna Island



American Falls
from Coal Island



Coal Island of old



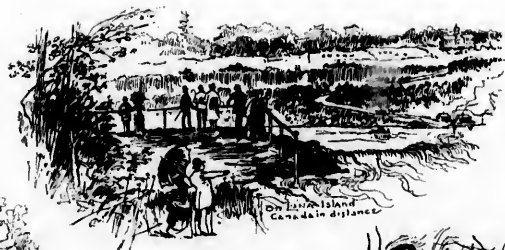
Path to Luna



Bridge to Luna Island

We stand next the little fall, beneath which is the famous Cave of the Winds, reached by the well known Biddle Stairs. We cross to Luna Island from which, protected by an iron railing, we have the most desirable near view of the American Falls and Rapids. Returning to top of bank, and following the path a short distance, we stand facing the great Horseshoe Falls.

Down the steps and out to Terrapin rocks where once stood Terrapin Tower, constructed of stone,



On Island
Certain distance



Middle
Stair



Top of Middle Stair



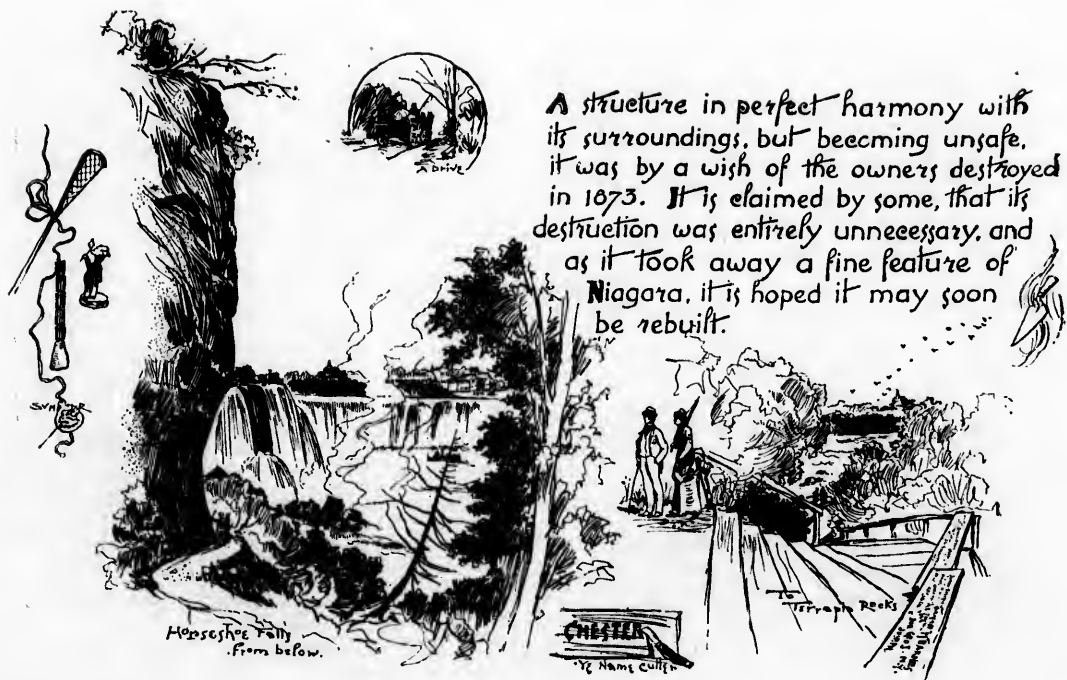
Frenzied Visitors



Equipment
for Cave of the Winds



Cave of the Winds



A structure in perfect harmony with its surroundings, but becoming unsafe, it was by a wish of the owners destroyed in 1873. It is claimed by some, that its destruction was entirely unnecessary, and as it took away a fine feature of Niagara, it is hoped it may soon be rebuilt.

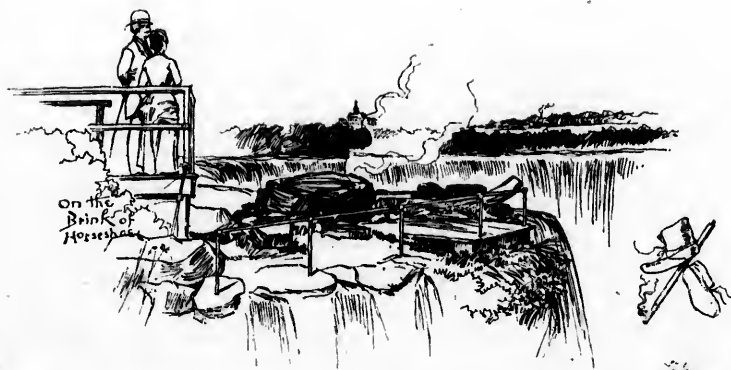
Horseshoe Falls
from below.

CHATEL
Name Cult

Terrapin pecks

Name Cult

A Drive



On the
Bank of
Horseshoe



Wood Company



Bridge to 2nd Sister Is.



Bridge to 1st Sister Is.



Little Brother Is.

Continuing our walk we reach the Three Sister Islands, with their picturesque scenery, from which we obtain a grand view of the Canadian Rapids. Recrossing to Goat Island, we may return to the East side by a short cut, or if we have time continue around the shore road, which will prove interesting enough to repay one.



Miniature Beach
1st Sister Is.



The Spring
Goat Island



Peculiar Cedars
Near the Spring



Taken as a whole, the Goat
Island group forms one of
the most important and
attractive points of interest
at Niagara Falls.



Canadian Rapids
From Sister Is.



Prospect Point
SUMMER & WINTER



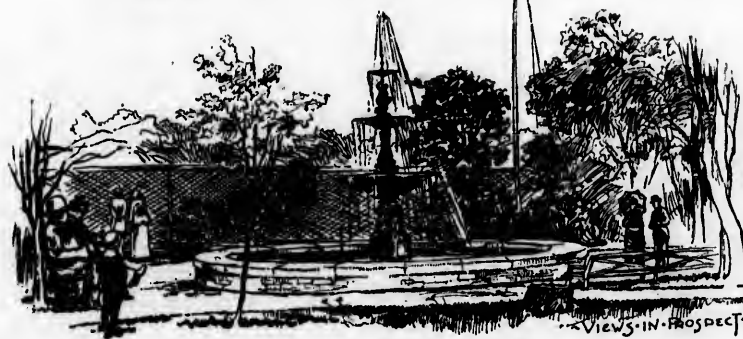
Returning to the main land, the next in order is Prospect Park adjoining the American Falls. The point of land at the edge, and brink of the Falls is called Prospect Point, It is enclosed with a substantial stone wall, for the protection of visitors; ~~and~~ over which, countless thousands, have leaned, and gazed with indescribable awe and admiration.



The First Sellers



"Over the Falls"
a frequent occurrence.



MILERS' MENAGERIE.

VIEWS IN PROSPECT PARK.



WATER MOTOR RAILWAY

BROWNS AT THE FALLS with SPECIALS TO FALLS COY

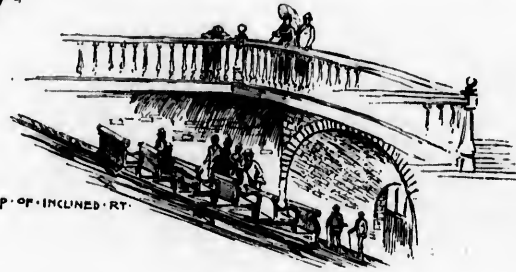


By three hundred steps, or an inclined, water motor railway, we can descend to the waters' edge, where formerly stood the "Shadow of the Rock" building and observatory, removed since the Falls became free.

From this point we also take the Maid of the Mist for the ride up past the American to the foot of Horseshoe Falls, which proves an exciting and not to be missed trip, after which we may land in Canada before returning to the American side.



SHADOW OF THE ROCK



TOP OF INCLINED RT.

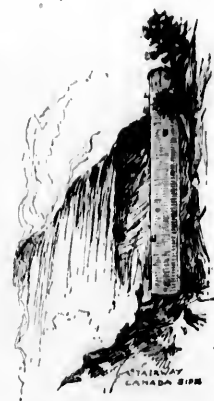


MAID OF THE MIST

MAID OF THE MIST



HORSESHOE FALLS



STAIRWAY
CANADA SIDE



View from
Dufferin Spring



GENERAL VIEW FROM CANADA SIDE



The Rambo
Clank Hill Island



Next comes the New Suspension Bridge, upon which visitors usually cross to Canada. Up this side from the bridge, we soon reach one of the formerly famous points of interest, gone forever, Table Rock, a huge projection overhanging the precipice about 40 ft. It fell in year 1910. Further up we cross to Cedar Island upon which is located the Burning Spring. Three miles back along the bank, past the bridges, we arrive at the Whirlpool and Whirlpool Rapids Park, Canada side.



Green
Heron Pond



Levers
Bridges
near
Burning
Spring

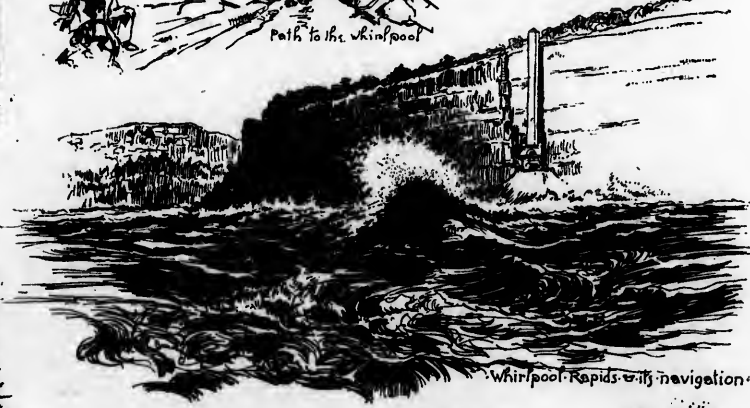
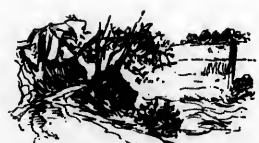




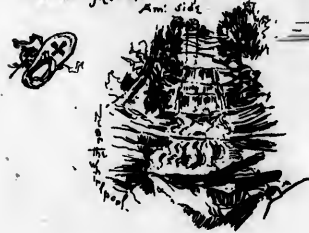
Near the Whirlpool
Am. side



Path to the Whirlpool



Whirlpool Rapids with navigation



Boat



Swimming



old side of the river



The whirlpool can also be viewed from the De Veaux College grounds, American side. Some miles below the Falls on the same side is the Devil's Hole a gloomy rugged chasm in the bank 150 ft. deep. Brock's Monument is located six miles below the Falls, on Queenstown Heights, Canada side.

Niagara is now "Free," though charges are made in some cases to cover expenses, and for personal property, otherwise visitors can see the Falls, and not feel as though they were ruined financially forever after.



Path to Devil's Hole.



Devil's Hole



A NEW HOTEL OPENED OCT 1907 DELIGHTFULLY LOCATED
 ON FRONT & PORTER AVENUES IN THE FASHIONABLE RESIDENCE
 PORTION OF THE CITY ELEGANT IN ITS APPOINTMENTS
 AND CONDUCTED IN STRICTLY FIRST CLASS STYLE UPON
 THE AMERICAN PLAN H.F. ROESSER MANAGER



**BANK OF
NIAGARA**

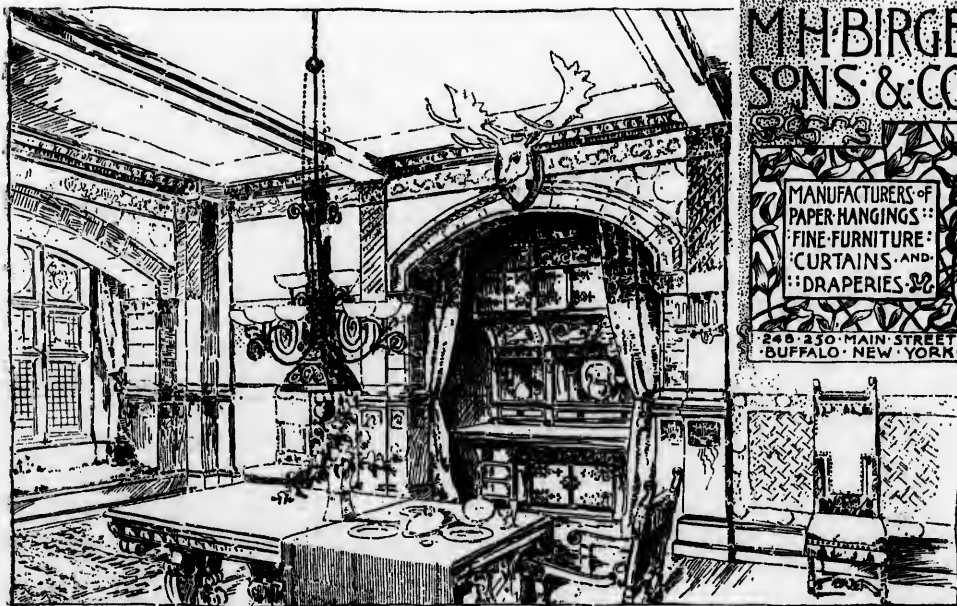
CAPITAL: \$50,000.
SURPLUS: \$20,000.

OFFICERS:
PRESIDENT: HENRY C. HOWARD.
VICE-PRES: W. C. CORNWELL.
CASHIER: E. J. MACKENNA.

DIRECTORS:
SHERMAN S. JEWETT
W. C. CORNWELL
GIBSON T. WILLIAMS
J. P. SCHOELLKOPF
HENRY C. JEWETT
E. H. HOWARD
ARTHUR S. SCHOELLKOPF
HENRY C. HOWARD



THIS BANK EXTENDS ALL MODERN FACILITIES TO TOURISTS. DRAFTS ON
PRINCIPAL CITIES OF UNITED STATES, CANADA & EUROPE BOUGHT AND
SOLD. LETTERS OF CREDIT FURNISHED. FOREIGN MONEY EXCHANGED.



IRON & STEEL WORK OF ALL KINDS FOR BUILDINGS

"KELLOGG"

FURNISHES

- BEAMS
- GIRDERS
- ROOFS
- TRUSSES
- IRON FRONTS
- COLUMNS
- & SMITH WORK
- IN GENERAL



"JONES"

FURNISHES

- VAULTS
- SAFES FIRE AND BURGULAR PROOF
- RAILINGS
- STAIRS
- CRESTINGS
- IRON FENCES
- FIRE ESCAPES
- & PAT. SIDE WALK LIGHTS

C. H. KELLOGG
312 LOWER TERRACE
& 17 JACKSON STREET



GEO. H. JONES & SONS
314 LOWER TERRACE
BUFFALO NEW YORK



ESTABLISHED 1845

ECCLESIASTIC & DOMESTIC ART STAINED GLASS

No 29 PEARL ST. & OVER 23 & 25 TERRACE
TELEPHONE No 621 SEND FOR CIRCULAR

BUFFALO N.Y.



AMERICAN BUSINESS COLLEGE
AND STENOGRAPHIC INSTITUTE

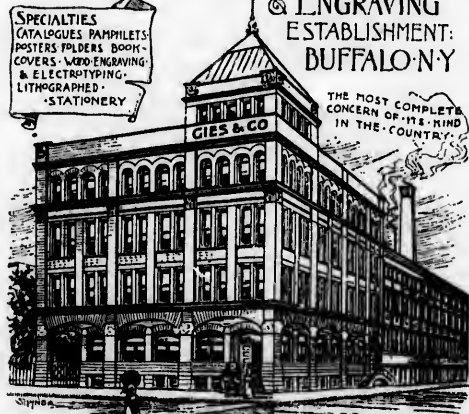
THE ONLY BUSINESS COLLEGE SUPERVISED BY COMMITTEES
OF PRACTICAL EXPERIENCED BUSINESS MEN
SEND FOR CIRCULARS ADDRESS
J.C. RYAN PRINCIPAL

INCORPORATED AND MANAGED BY LEADING BUSINESS MEN WHO EMPLOY
NUMEROUS BOOK-KEEPERS CLERKS AND OFFICE ASSISTANTS AND POSSESS EXCEPTIONAL
FACILITIES FOR HELPING COMPETENT GRADUATES TO LUCRATIVE POSITIONS

EXTERIOR VIEW OF GIES & CO'S
LITHOGRAPHING · PRINTING ·
& ENGRAVING
ESTABLISHMENT:
BUFFALO · N · Y

SPECIALTIES
CATALOGUES · PAMPHLETS ·
POSTERS · FOLDERS · BOOK-
COVERS · WOOD-ENGRAVING
& ELECTROTYPING ·
LITHOGRAPHED ·
STATIONERY

THE MOST COMPLETE
CONCERN OF ITS KIND
IN THE COUNTRY



MAIN BUILDING		DEPARTMENTS	REAR EXTENSION
BASEMENT	STOCK ROOM & SHIPPING DEPT.	1ST FLOOR	BOOK & JOB PRINTING DEPT.
1ST FLOOR	OFFICE & STOCK ROOM	2ND	LITHOGRAPHIC PRINTING
2ND	DESIGNING & ARTISTIC DEPT.	3RD	STATIONERY PRINTING AND TRANSFER AS FOR THEM
3RD	COMPOSING ROOM · ELECTROTYPING · FOUNDRY & WOOD ENGRAVING DEPT.	4TH	BINDERY & BLANK BOOK DEPT.
4TH	DRYING & STORAGE ROOMS		



HIGH-CLASS
ART-GOODS

ANTIQUES ·
CURIOS ·
BRIC-A-BRAC

LATEST EUROPEAN NOVELTIES

ARTIST MATERIALS

F · S · PEASE 442 · MAIN ST · BUFFALO · NY ·
PEASE · HIGH-CLASS · PREMIUM · OIL ·



JUMNER
ARTIST

DESIGNS · & · ILLUSTRATIONS ·
"PEN & INK · GOLF · WASH"

COURT STREET
THIRTY-NINE

BUFFALO · N · Y ·

BUFFALO
STEAM EGG POACHER.



SOLE MANUFACTURERS
SIDNEY SHEPARD & CO.
 PROPRIETORS BUFFALO STAMPING WORKS
 BUFFALO N.Y.



MAKERS
 OF
 HUNTERS
 POINT



LAWSON VALENTINE CO
 THIRTY LAFAYETTE PLACE
 N.Y. CITY
 FACTORY HUNTER'S POINT N.Y.

OTTO ULBRICH:

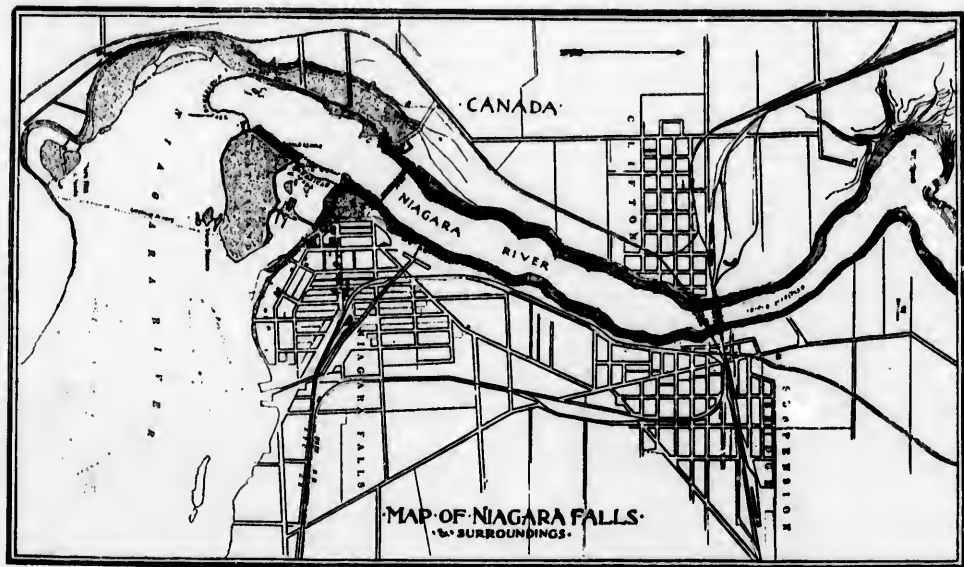


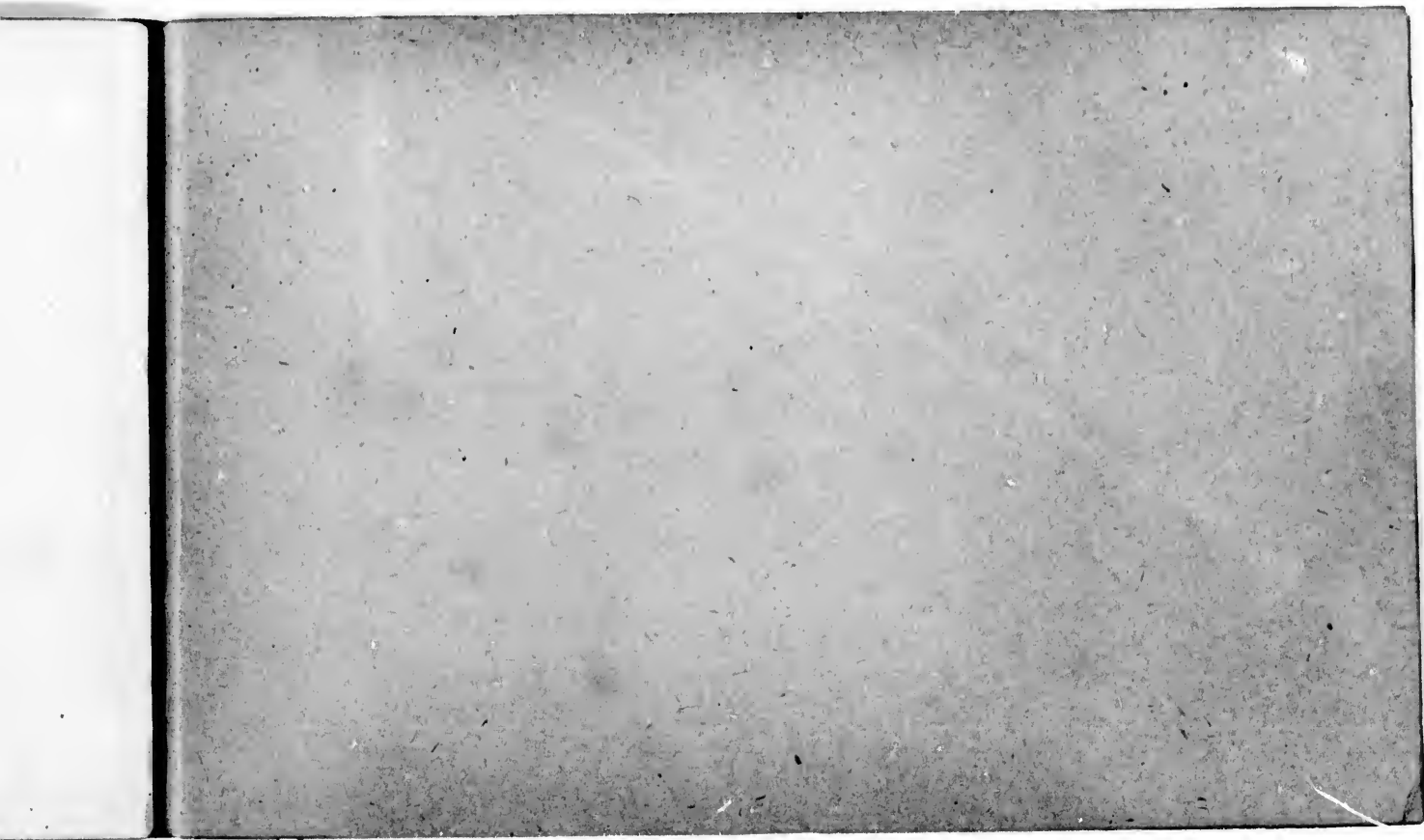
WHOLESALE & RETAIL

BOOKSELLER & STATIONER

395 MAIN STREET
 BUFFALO N.Y.

ORDERS BY MAIL PROMPTLY
 FILLED CORRESPONDENCE SOLICITED









m. m.



