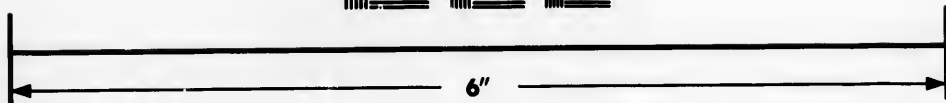
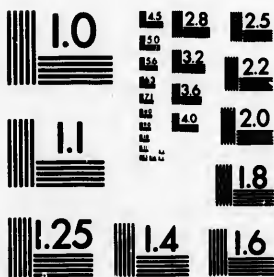


**IMAGE EVALUATION
TEST TARGET (MT-3)**



**Photographic
Sciences
Corporation**

23 WEST MAIN STREET
WEBSTER, N.Y. 14580
(716) 872-4503

**CIHM/ICMH
Microfiche
Series.**

**CIHM/ICMH
Collection de
microfiches.**



Canadian Institute for Historical Microreproductions / Institut canadien de microreproductions historiques

© 1983

Technical and Bibliographic Notes/Notes techniques et bibliographiques

The Institute has attempted to obtain the best original copy available for filming. Features of this copy which may be bibliographically unique, which may alter any of the images in the reproduction, or which may significantly change the usual method of filming, are checked below.

L'institut a microfilmé le meilleur exemplaire qu'il lui a été possible de se procurer. Les détails de cet exemplaire qui sont peut-être uniques du point de vue bibliographique, qui peuvent modifier une image reproduite, ou qui peuvent exiger une modification dans la méthode normale de filmage sont indiqués ci-dessous.

- Coloured covers/
Couverture de couleur
- Covers damaged/
Couverture endommagée
- Covers restored and/or laminated/
Couverture restaurée et/ou pelliculée
- Cover title missing/
Le titre de couverture manque
- Coloured maps/
Cartes géographiques en couleur
- Coloured ink (i.e. other than blue or black)/
Encre de couleur (i.e. autre que bleue ou noire)
- Coloured plates and/or illustrations/
Planches et/ou illustrations en couleur
- Bound with other material/
Relié avec d'autres documents
- Tight binding may cause shadows or distortion along interior margin/
La reliure serrée peut causer de l'ombre ou de la distorsion le long de la marge intérieure
- Blank leaves added during restoration may appear within the text. Whenever possible, these have been omitted from filming/
Il se peut que certaines pages blanches ajoutées lors d'une restauration apparaissent dans le texte, mais, lorsque cela était possible, ces pages n'ont pas été filmées.
- Additional comments:/
Commentaires supplémentaires:

- Coloured pages/
Pages de couleur
- Pages damaged/
Pages endommagées
- Pages restored and/or laminated/
Pages restaurées et/ou pelliculées
- Pages discoloured, stained or foxed/
Pages décolorées, tachetées ou piquées
- Pages detached/
Pages détachées
- Showthrough/
Transparence
- Quality of print varies/
Qualité inégale de l'impression
- Includes supplementary material/
Comprend du matériel supplémentaire
- Only edition available/
Seule édition disponible
- Pages wholly or partially obscured by errata slips, tissues, etc., have been refilmed to ensure the best possible image/
Les pages totalement ou partiellement obscurcies par un feuillet d'errata, une pelure, etc., ont été filmées à nouveau de façon à obtenir la meilleure image possible.

This item is filmed at the reduction ratio checked below/
Ce document est filmé au taux de réduction indiqué ci-dessous.

10X	14X	18X	22X	26X	30X
<input type="checkbox"/>	<input type="checkbox"/>	<input type="checkbox"/>	<input checked="" type="checkbox"/>	<input type="checkbox"/>	<input type="checkbox"/>
12X	16X	20X	24X	28X	32X

The copy filmed here has been reproduced thanks to the generosity of:

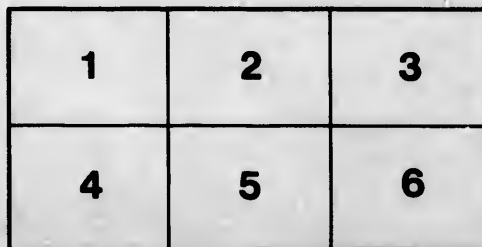
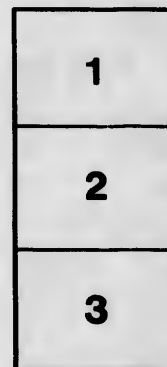
Metropolitan Toronto Library
Canadian History Department

The images appearing here are the best quality possible considering the condition and legibility of the original copy and in keeping with the filming contract specifications.

Original copies in printed paper covers are filmed beginning with the front cover and ending on the last page with a printed or illustrated impression, or the back cover when appropriate. All other original copies are filmed beginning on the first page with a printed or illustrated impression, and ending on the last page with a printed or illustrated impression.

The last recorded frame on each microfiche shall contain the symbol \rightarrow (meaning "CONTINUED"), or the symbol ∇ (meaning "END"), whichever applies.

Maps, plates, charts, etc., may be filmed at different reduction ratios. Those too large to be entirely included in one exposure are filmed beginning in the upper left hand corner, left to right and top to bottom, as many frames as required. The following diagrams illustrate the method:



L'exemplaire filmé fut reproduit grâce à la générosité de:

Metropolitan Toronto Library
Canadian History Department

Les images suivantes ont été reproduites avec le plus grand soin, compte tenu de la condition et de la netteté de l'exemplaire filmé, et en conformité avec les conditions du contrat de filmage.

Les exemplaires originaux dont la couverture en papier est imprimée sont filmés en commençant par le premier plat et en terminant soit par la dernière page qui comporte une empreinte d'impression ou d'illustration, soit par le second plat, selon le cas. Tous les autres exemplaires originaux sont filmés en commençant par la première page qui comporte une empreinte d'impression ou d'illustration et en terminant par la dernière page qui comporte une telle empreinte.

Un des symboles suivants apparaîtra sur la dernière image de chaque microfiche, selon le cas: le symbole \rightarrow signifie "A SUIVRE", le symbole ∇ signifie "FIN".

Les cartes, planches, tableaux, etc., peuvent être filmés à des taux de réduction différents. Lorsque le document est trop grand pour être reproduit en un seul cliché, il est filmé à partir de l'angle supérieur gauche, de gauche à droite, et de haut en bas, en prenant le nombre d'images nécessaire. Les diagrammes suivants illustrent la méthode.

aire
détails
ues du
modifier
ger une
filmage

ées

re

y errata
ed to

nt
ne pelure,
çon à



32X

Georgetown Academy.



A Classical, Mathematical, Commercial and Liberal Institution.

J. TAIT AND A. D. CAMPBELL,

PROPRIETORS.

Faculty.

J. TAIT, PRINCIPAL,
TEACHER OF CLASSICS, ENGLISH GRAMMAR, &c.

A. D. CAMPBELL,
TEACHER OF PENMANSHIP, DRAWING, &c.

M. McCORMICK,
ASSISTANT CLASSICAL AND ENGLISH TEACHER

F. DUNN,
TEACHER OF TELEGRAPHY.

MRS. F. DUNN,
TEACHER OF MUSIC.

Guelph Mercury Steam Printing House.

Georgetown Academy.

TERM,

Commencing-----

187-----

GEORGETOWN is a pleasant Village, nearly midway between Guelph and Toronto.

THE ACADEMY is an immense building, pleasingly situated, and scarcely two minutes' walk from the Station.

THE TEACHERS have had a lengthened experience (twelve years) in some of the best schools of the Province, and have met with more than a flattering degree of success in their present work.

THE COURSE OF INSTRUCTION, which is intensely practical, is varied to meet the requirements of all. Teachers, Students looking forward to College or University, and Parties desirous of a Business or Liberal Training, will find our arrangements complete as to giving them a thorough Preparatory Course. All are at perfect liberty to take up the subjects which they may deem most useful or most likely to be of advantage to them.

OUR CANDIDATES for Teachers' Certificates have been eminently successful.

STUDENTS preparing for Arts, Law, or Medicine receive a complete drilling in all the subjects relating to their matriculation.

COMMERCIAL STUDENTS will find that more than usual prominence is given to Book-keeping, Penmanship, Commercial Law, Phonography and Telegraphy in all their ramifications.

THOSE wishing a Liberal Course will observe that French, German, Music, Painting and Drawing afford abundance of scope for their abilities.

THE system of Phonography, or "Short-hand," is that of Graham, one by which the most rapid speaker can be easily and accurately reported, and the one almost entirely used by Reporters in North America.

TELEGRAPHY is taught by one of the best operators on the "Grand Trunk." It will be observed that we teach Phonography and Telegraphy at less than one-half the rates of other Commercial Schools.

Our
seve
Tr
they
pres
boar
Bo
requ
the
the
A
will
plea
Stud
Yo
perfo
has
Bo
chan
who
term

Tuit
Incl
Day

Lat
Gree
Fren
Germ
Inst
Phon

Tr
and
Corr
Th
thei
Tr
Tr

Georgetown Academy.

OUR MUSIC TEACHER, besides her Canadian experience, was a successful Teacher for seven years in London, England.

TEXT BOOKS.—Teachers and Candidates for matriculation use the books from which they will be examined. The latest and most approved Hand-books on other subjects pressed into service when necessary. The Teaching is chiefly done by lecture and black board illustrations.

BOARDERS will meet with all the necessary encouragement and assistance they may require in the prosecution of their studies. Parents or Guardians may rest assured that the utmost care and watchfulness will be exercised over the morals and good behavior of the pupils.

A READING-ROOM, containing the leading "Dailies," Magazines and choice literature, will hereafter be open to the Students, and is covered by the item for incidentals. A pleasant and commodious Study and Sitting-room will render the spare time of the Students more agreeable.

YOUNG LADIES admitted as Students. Students may enter at any time, or for any period—paying at proportionate rates. No one will be accepted as a Day Student who has not relatives in the Village or vicinity.

BOARDERS furnish their own toilet articles. "Half-time" Instrumental Music will be charged one-third higher than ordinary rates. Students taking up extras are charged for whole quarter. No reduction made to Boarders who may be absent any part of their term—unless such absence is the result of sickness.

TERMS---IN ADVANCE.

Tuition, English, Mathematics, Book-keeping, Board and Washing, per term	\$33 00
Incidentals, per term (with Reading-room).....	1 00
Day Students, per term.....	5 50

EXTRAS PER TERM.

Latin	\$2 50	Pencil Drawing.....	\$3 00
Greek.....	2 50	Crayon	5 00
French	2 50	Oil Painting.....	per agreement
German.....	2 50	Ornamental Penmanship.....	5 00
Instrumental Music.....	6 00	Telegraphy (Boarders).....	12 00
Phonography.....	6 00	" (Day Pupils).....	15 00

Practice on Piano, one hour per day.....\$1 50.
Vocal Music not an extra.

THE COMMERCIAL COURSE embraces:—Theoretical and Practical Book-keeping, by single and double entry; Commercial and Mental Arithmetic; Business Penmanship; Business Correspondence; Lectures on Commercial Law, &c.

THE TEACHERS' COURSE embraces *all* the subjects required by candidates for any o their examinations—including lectures on School Law and Education.

THE CLASSICAL COURSE, as per University or College curriculum.

THE LIBERAL COURSE embraces Modern Languages, Music, Drawing, Painting, &c.

1877- Georgetown.

James papers

Georgetown Academy.

References.

WE request application to any of the following references. These gentlemen have been acquainted with the proprietors for a great number of years:

REV. J. MIDDLEMISS, Elora.
REV. A. D. McDONALD, Elora.
REV. J. GERRIE, Elora.
REV. N. F. ENGLISH, London.
REV. W. BARRIE, D. D., Eramosa.
REV. K. McDONALD, Thamesford.
REV. E. BARKER, Fergus.
REV. J. THOMSON, Erin.
REV. R. BROWN, Middleville.
REV. J. BROWN, Lanark.
REV. J. KILGOUR, Inspector, Guelph.
REV. H. DENNY, Alton.
REV. R. EWING, Georgetown.
REV. J. UNSWORTH, Georgetown.
REV. M. SWAN, Georgetown.
REV. T. C. BROWN, Georgetown.
REV. JAS. LITTLE, Nassagaweya.
REV. GEO. McLENNAN, Harriston.
REV. R. TORRANCE, Inspector, Guelph.

REV. W. S. BALL, Guelph.
REV. THOS. WARDROPPE, Guelph.
REV. J. M. CAMERON, Toronto.
A. D. FORDYCE, Inspector, Fergus.
W. G. MIDDLETON, L. M. B., Elora.
W. R. PENTLAND, M. D., Elora.
C. CLARKE, M. P. P., Elora.
J. COYNE, M. P. P., Brampton.
W. BARBER, M. P. P., Streetsville.
JAS. BARBER, Esq., Georgetown.
R. LITTLE, Inspector, Acton.
T. A. KEATING, M. D., Guelph.
J. GILLIES, M. D., Toeswater.
S. COWAN, M. D. Harriston.
J. RUTHERFORD, M. D. Harriston.
D. GUTHRIE, Esq., Guelph.
J. INNES, Editor "Mercury," Guelph.
J. YOUNG, Editor "Tribune," Harriston.
A. MEIKLEJOHN, Reeve, Harriston.

Holiday terms

3 ⁵⁰/₁₀₀ per week, for Board, tuition &c.

Telegraphy per term \$6 ⁰⁰/₁₀₀

Phonography " " \$6 ⁰⁰/₁₀₀

*Other extras in proportion to
time*

Tait and Campbell.

