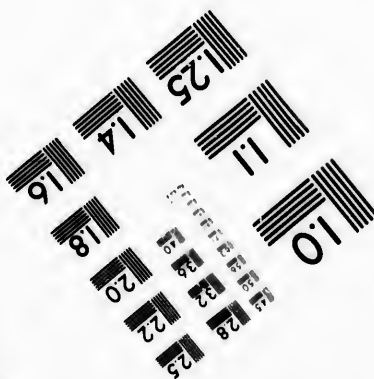
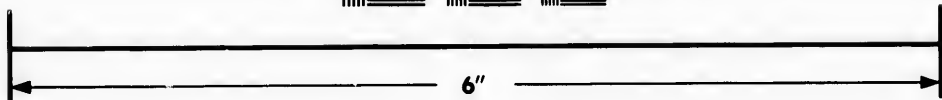
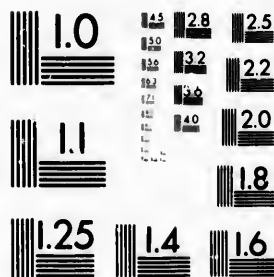


**IMAGE EVALUATION
TEST TARGET (MT-3)**



**Photographic
Sciences
Corporation**

23 WEST MAIN STREET
WEBSTER, N.Y. 14580
(716) 872-4503

15 28
32 25
36 22
20
18

**CIHM/ICMH
Microfiche
Series.**

**CIHM/ICMH
Collection de
microfiches.**

11
01



Canadian Institute for Historical Microreproductions

Institut canadien de microreproductions historiques

1980

Technical and Bibliographic Notes/Notes techniques et bibliographiques

The Institute has attempted to obtain the best original copy available for filming. Features of this copy which may be bibliographically unique, which may alter any of the images in the reproduction, or which may significantly change the usual method of filming, are checked below.

L'institut a microfilmé le meilleur exemplaire qu'il lui a été possible de se procurer. Les détails de cet exemplaire qui sont peut-être uniques du point de vue bibliographique, qui peuvent modifier une image reproduite, ou qui peuvent exiger une modification dans la méthode normale de filmage sont indiqués ci-dessous.

- | | |
|---|---|
| <input checked="" type="checkbox"/> Coloured covers/
Couverture de couleur | <input type="checkbox"/> Coloured pages/
Pages de couleur |
| <input type="checkbox"/> Covers damaged/
Couverture endommagée | <input type="checkbox"/> Pages damaged/
Pages endommagées |
| <input type="checkbox"/> Covers restored and/or laminated/
Couverture restaurée et/ou pelliculée | <input type="checkbox"/> Pages restored and/or laminated/
Pages restaurées et/ou pelliculées |
| <input type="checkbox"/> Cover title missing/
Le titre de couverture manque | <input checked="" type="checkbox"/> Pages discoloured, stained or foxed/
Pages décolorées, tachetées ou piquées |
| <input type="checkbox"/> Coloured maps/
Cartes géographiques en couleur | <input type="checkbox"/> Pages detached/
Pages détachées |
| <input checked="" type="checkbox"/> Coloured ink (i.e. other than blue or black)/
Encre de couleur (i.e. autre que bleue ou noire) | <input type="checkbox"/> Showthrough/
Transparence |
| <input type="checkbox"/> Coloured plates and/or illustrations/
Planches et/ou illustrations en couleur | <input type="checkbox"/> Quality of print varies/
Qualité inégale de l'impression |
| <input type="checkbox"/> Bound with other material/
Relié avec d'autres documents | <input type="checkbox"/> Includes supplementary material/
Comprend du matériel supplémentaire |
| <input type="checkbox"/> Tight binding may cause shadows or distortion along interior margin/
La reliure serrée peut causer de l'ombre ou de la distorsion le long de la marge intérieure | <input type="checkbox"/> Only edition available/
Seule édition disponible |
| <input type="checkbox"/> Blank leaves added during restoration may appear within the text. Whenever possible, these have been omitted from filming/
Il se peut que certaines pages blanches ajoutées lors d'une restauration apparaissent dans le texte, mais, lorsque cela était possible, ces pages n'ont pas été filmées. | <input type="checkbox"/> Pages wholly or partially obscured by errata slips, tissues, etc., have been refilmed to ensure the best possible image/
Les pages totalement ou partiellement obscurcies par un feuillet d'errata, une pelure, etc., ont été filmées à nouveau de façon à obtenir la meilleure image possible. |
| <input type="checkbox"/> Additional comments:
Commentaires supplémentaires: | |

This item is filmed at the reduction ratio checked below/
Ce document est filmé au taux de réduction indiqué ci-dessous.

10X	14X	18X	22X	26X	30X
<input type="checkbox"/>	<input type="checkbox"/>	<input type="checkbox"/>	<input checked="" type="checkbox"/>	<input type="checkbox"/>	<input type="checkbox"/>
12X	16X	20X	24X	28X	32X

The copy filmed here has been reproduced thanks to the generosity of:

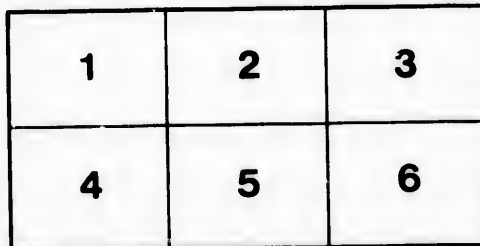
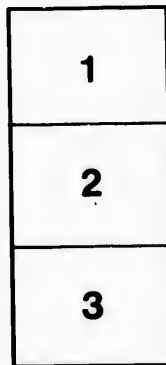
Library of the Public
Archives of Canada

The images appearing here are the best quality possible considering the condition and legibility of the original copy and in keeping with the filming contract specifications.

Original copies in printed paper covers are filmed beginning with the front cover and ending on the last page with a printed or illustrated impression, or the back cover when appropriate. All other original copies are filmed beginning on the first page with a printed or illustrated impression, and ending on the last page with a printed or illustrated impression.

The last recorded frame on each microfiche shall contain the symbol \rightarrow (meaning "CONTINUED"), or the symbol ∇ (meaning "END"), whichever applies.

Maps, plates, charts, etc., may be filmed at different reduction ratios. Those too large to be entirely included in one exposure are filmed beginning in the upper left hand corner, left to right and top to bottom, as many frames as required. The following diagrams illustrate the method:



L'exemplaire filmé fut reproduit grâce à la générosité de:

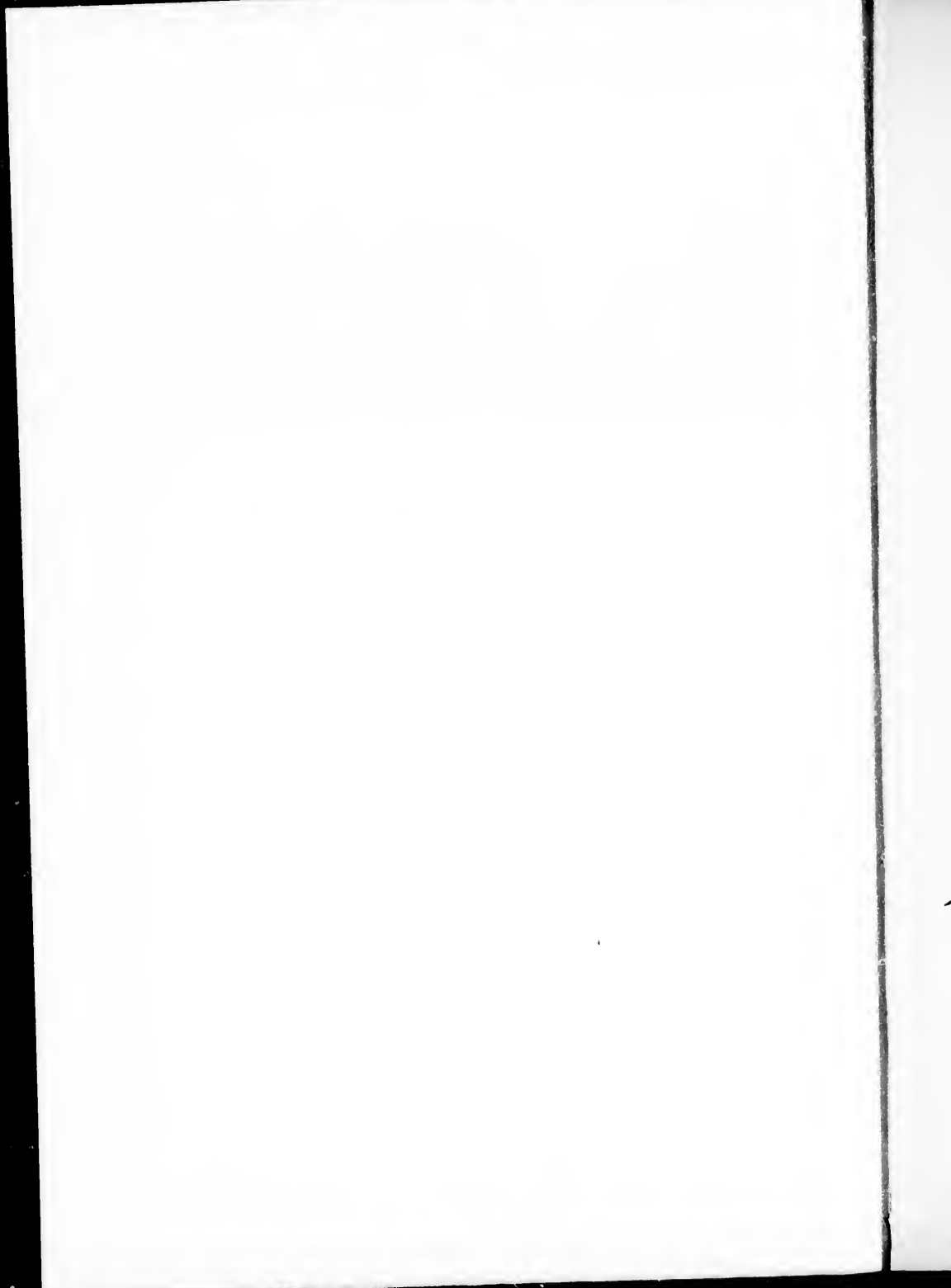
La bibliothèque des Archives
publiques du Canada

Les images suivantes ont été reproduites avec le plus grand soin, compte tenu de la condition et de la netteté de l'exemplaire filmé, et en conformité avec les conditions du contrat de filmage.

Les exemplaires originaux dont la couverture en papier est imprimée sont filmés en commençant par le premier plat et en terminant soit par la dernière page qui comporte une empreinte d'impression ou d'illustration, soit par le second plat, selon le cas. Tous les autres exemplaires originaux sont filmés en commençant par la première page qui comporte une empreinte d'impression ou d'illustration et en terminant par la dernière page qui comporte une telle empreinte.

Un des symboles suivants apparaîtra sur la dernière image de chaque microfiche, selon le cas: le symbole \rightarrow signifie "A SUIVRE", le symbole ∇ signifie "FIN".

Les cartes, planches, tableaux, etc., peuvent être filmés à des taux de réduction différents. Lorsque le document est trop grand pour être reproduit en un seul cliché, il est filmé à partir de l'angle supérieur gauche, de gauche à droite, et de haut en bas, en prenant le nombre d'images nécessaire. Les diagrammes suivants illustrent la méthode.



Q-6-42

Canadian Diamond Jubilee Medals

By

P448-1A

R. W. McEachlan



Montreal

1898

Thin

R
O
C
P
t
n
t
o
b
it
n

v
u
n
u

y
tr
d



CANADIAN DIAMOND JUBILEE MEDALS

BY R. W. McLACHLAN

THE longest reign of any British Sovereign has been considered an event worthy to be commemorated by the striking of medals in many places throughout the Empire; and Canada has not been behind the other Colonies in the number of these medals for on no other occasion have so many been issued. The idea of presenting "Diamond Jubilee" medals to children in the public schools seems to have sprung up simultaneously in very many places in the Dominion. Although some of these are not of the highest merit, others are so beautiful and appropriate that it has been thought well to publish the list thus early that it may be preserved for reference and that the facts may be noted down before they pass from memory.

As several firms of medalists have been connected with their issue, I have thought well to change the usual order of arrangement and class them under the names of these different makers. The first I shall take up will be those issued by

HENRY BIRKS & SONS

This is a firm of jewelers who for about twenty years have carried on an extensive business in Montreal, and while they had not heretofore struck medals, had done considerable work in cutting crest and

other dies. Having received a large order from the Protestant Board of School Commissioners of Montreal they solicited other orders with the result that the ten medals described below were struck by them.

- 1 *Obv.* VICTORIA QUEEN, AND. EMPRESS ; the crowned and laureated bust of the Queen to the left, with the date 1837 before and 1897 behind ; under the bust, one and a half millimetres from the back, is the signature BIRKS.

Rev. PROTESTANT BOARD OF SCHOOL COMMISSIONERS MONTREAL on a raised margin ; the arms of the City of Montreal crowned ; size 30 millimetres ; white metal.

The obverse is probably unique having through accident been nicked and thrown aside as useless, and a new die engraved.

- 2 *Obv.* Similar to No. 1, but the signature is two and a half millimetres from the back of the bust and the lace round the neck more pointed.

Rev. Same as No. 1, size 30 m. ; br. and w. m.

In all 8500 medals were distributed among the children in the different public schools in the city ; white metal medals were given to ordinary scholars and bronze ones to prize winners.

- 3 *Obv.* Same as No. 2.

Rev. MCGILL MODEL SCHOOL, MONTREAL. on a raised margin a wreath composed of oak leaves to the left and maple leaves to the right ; size 30 m. ; br. and w. m.

The number distributed was 350. The bronze medals were given as prizes.

4 *Obv.* Same as No. 2.

Rev. POINTE CLAIRE | SCHOOL. in two lines in the field ; a sprig of maple between the lines ; around the edge is a raised margin with eight points equidistant ; size 30 m. ; br. and w. m.

This is a place of summer residences, situated about fifteen miles from Montreal, with a small winter population. Only some thirty medals were issued.

5 *Obv.* Same as No. 2.

Rev. Plain centre with a raised margin impressed with eight points ; size 30 m. ; br. and w. m.

Orders were received from Huntingdon and Longueuil without any special design. Consequently the same medal was distributed in the former town among the children of two Sunday schools, and in the latter to scholars in the Protestant schools, the teachers and commissioners receiving bronze impressions.

6 *Obv.* Same as No. 2,

Rev. PROTESTANT SCHOOL COMMISSIONERS QUEBEC. ; the arms of Quebec, consisting of a female seated at the foot of Cape Diamond, holding a cornucopia ; at her side is a beehive and a shield emblazoned with a lion, before her is a beaver ; size 30 m. ; br. and w. m.

The number distributed among the children of the public schools of Quebec was 279.

7 *Obv.* Same as No. 2.

Rev. HIGH SCHOOL OF QUEBEC. The Citadel of Quebec to the right and a leafless tree to the left; a beaver in the foreground and four vessels in the river; size 30 m. br.

Only 106 of this medal was struck. The design is taken from an old seal of the Province of Quebec.

8 *Obv.* Same as No. 2.

Rev. GIRL'S HIGH SCHOOL, QUEBEC. Arms similar to No. 6; size 30 m.; br.

There were only 95 of this medal distributed.

9 *Obv.* Same as No. 3.

Rev. SCHOOLS OF NEW GLASGOW. N. S. A garter, inscribed TOTIS VIRIBUS, enclosing a sprig of trailing arbutus (may-flower); size 30 m.; w. m.

There were 1000 of this medal distributed in the public schools of New Glasgow, all in white metal.

10 *Obv.* Same as No. 2.

Rev. PRESENTED BY DR J. B. BENSON, MAYOR, CHATHAM, N. B. A full rigged ship to the left, under the ship on a ribbon VENTIS SECUNDIS; size 30 m.; br. and w. m.

900 in all were distributed by Dr. Benson, mayor, to the children of Chatham public school.

P. W. ELLIS & CO.

of Toronto, have during the past fifteen years struck a large number of medals commemorative of different

events in the history of the country, and for distribution as prizes in its institutions of learning. Some of these medals are of high artistic merit, the best ever produced in Canada. Two different obverses were engraved from which the following medals have been struck.

- 11 *Obv.* VICTORIA on a raised border with the date 1837 and maple leaves to the left, 1897 and oak leaves to the right and QUEEN | AND | EMPRESS below; within the border DIAMOND JUBILEE; crowned bust of the Queen to the left with a laurel branch before and REGISTERED in small letters below and on the truncation of the bust, the signature P. W. ELLIS & CO. TORONTO.

Rev. CANADA | CONGRATULATES | HER | QUEEN in the centre, surrounded with shields bearing the arms of the seven provinces, with the names B COLUMBIA, N BRUNSWICK, QUEBEC, ONTARIO, N SCOTIA, MANITOBA, P EDWARDS I below each respectively; at the top are the crowned arms of Great Britain and the motto DIEU ET MON DROIT; to the left, near the edge, P W ELLIS & CO, to the right TORONTO REGISTERED. The interstices are filled up with maple leaves and scroll work; size 35 m.; br. and w. m.

This medal was struck for sale to the public throughout the Dominion. It was also distributed in a number of places to the children of the public schools, generally in such cases a special design was attached as a suspender.

- 12 *Obv.* Same as No. 11.

Rev. PRESENTED TO THE PUPILS. OF THE OTTAWA CITY SCHOOLS on a raised margin ; arms of the City of Ottawa with the motto CITY OF OTTAWA ADVANCE ; two sprigs of maple and a rose ; at the top ; under "to the" the signature OLMSTED & HURDMAN in small letters ; size 35 m. ; w. m.

The signature on this medal represents a firm of jewelers in Ottawa through whom the order was given but it was struck by P. W. Ellis & Co.

- 13 *Obv.* Same as No. 11.

Rev. PRESENTED TO THE TEACHERS OF THE OTTAWA CITY SCHOOLS The design is otherwise the same as No. 12, except that the signature P. W. Ellis & Co. occurs under the rose ; size 35 m. ; br.

Given at the same time as the scholars' medal.

- 14 *Obv.* Same as No. 11.

Rev. VICTORIA HOSPITAL. LONDON, CANADA. Arms of the City of London, Ontario, with the motto LABORE ET PERSEVERANTIA ; under the motto are two sprigs of maple tied with a bow and under the arms the signature P W ELLIS & CO ; size 35 m. ; w. m.

This was struck on the occasion of the official opening of the hospital.

- 15 *Obv.* VICTORIA DIAMOND JUBILEE 1897 Crowned bust of the Queen to the right ; behind the bust is the inscription TO | COMME | MORATE | THE

| SIXTI | ETH in six lines and before it YEAR | OF
HER | MAJESTYS | REIGN in four lines ; at the bot-
tom the signature P W ELLIS & CO.

Rev. INTERNATIONAL CONVENTION. TORONTO,
CANADA. on a raised margin ; the flags of Great
Britain and the United States crossed ; on these
flags is the design of the Epworth League ; a
maltese cross ; inscribed in a circle LOOK UP. LIFT
UP. ; on the left arm the letter E and on the right
L ; in the centre is a small latin cross ; above
the cross the date JULY | 1897. ; size 35 m. ; w. m.

This was struck for sale at the convention of the
Epworth League Societies of Christian Endeavour,
held in Toronto about the time of the Jubilee cele-
bration. It was not official.

16 *Obv.* Same as No. 15.

Rev. In exergue WATCHES, SILVERWARE, JEWEL-
RY & CUTLERY | THE T. EATON CO. LIMITED | 190
YOUNG ST. | TORONTO. A large warehouse with
a ribbon above inscribed CANADA'S GREATEST
STORE ; above the ribbon is a radiated crown ;
a sprig composed of maple leaves, roses, thistles
and shamrocks to the left ; another to the right ;
size 35 m. ; w. m.

This medal was struck for sale in the large de-
partmental store whose name it bears.

17 *Obv.* CANADA'S GREAT VICTORIAN ERA EXPOSI-
TION & INDUSTRIAL FAIR ; the arms of Great
Britain with supporters and motto ; to the left
the young head of the Queen with the date

1837 ; to the right the old head and 1897 ; above a rose, thistles and shamrocks ; with the signature P W ELLIS & CO. TORONTO ; below a beaver and maple leaves.

Rev. Arms of the City of Toronto, with an Indian as supporter to the right and Britannia to the left, motto INDUSTRY INTELLIGENCE INTEGRITY ; surrounded with six busts with inscription as follows : JOHN CABOT LANDED IN CANADA 1497. SIR W. LAURIER PREMIER 1897, LORD ABERDEEN GOV. GEN. 1897, J. J. WITHROW PRES. TOR. I. EX. AS., LORD LORNE GOV. GEN. 1879, SIR J MACDONALD PREMIER 1867 ; laurel leaves between and around each bust ; size 30 m. ; br.

This medal was given to exhibitors at the annual exhibition for 1897 of the Toronto Industrial Exhibition Association.

The three following medals are what are known as mules struck from dies that do not pertain to each other. These were made for sale to collectors in 1898, one year after the Jubilee, from the obverse of a medal struck to commemorate the Halifax Carnival of 1896, muled with two obverses and one reverse of the Jubilee medals struck by Ellis. This practice of muling dies should not be indulged in by medalists. I give the medals here that the list may be as complete as possible, not that I approve of the practice.

18 *Obv.* Same as No. 11.

Rev. HALIFAX NOVA SCOTIA on a raised margin with ornaments between the words ; arms of

the City of Halifax, N. S., and motto E MARI
MERCES; below is the signature J. CORNELIUS in
small letters; size 35 m.; w. m.

The signature is that of a jeweler of Halifax by
whom the medals were sold.

19 *Obv.* Same as No. 15.

Rev. Same as No. 18; size 35 m.; w. m.

20 *Obv.* Same as reverse of No. 11.

Rev. Same as No. 18; size 35 m.; w. m.

THE STANDARD SILVER CO. (LIMITED)

of Toronto, issued a Jubilee medal which they dis-
tributed among their patrons; the dies were by a
local engraver.

21 *Obv.* Young bust of the Queen to the left crown-
ed; above 1837; below VICTORIA; all within a
wreath composed of maple leaves to the left
and oak leaves to the right.

Rev. Old bust of the Queen to the left crowned;
above 1897; below QUEEN & EMPRESS to the left
DIAMOND | JUBILEE; to the right SEXEAGENARY | OF
H. M. REIGN; size 45 m.; w. m.

AMBROSE KENT & SON

of Toronto, issued the following medal for sale gen-
erally in the City. About two or three thousand in
all were struck. It is of superior workmanship.

22 *Obv.* IMPERIUM ET LIBERTAS coronated and veil-
ed bust of the Queen similar to that on the re-

cent coinage of Great Britain ; to the right a sprig of laurel below.

Rev. 1837 above and 1897 below with two sprigs of maple leaves on a raised margin ; within the margin IN COMMEMORATION | OF THE | 60th | YEAR OF | HER MAJESTY'S REIGN ; size 25 m. ; brass.

SPINK & SON

Numismatists and Jewelers, of London, England, issued a series of medals commemorative of the Diamond Jubilee and among them, two reverses specially designed for Canada. These medals are the best executed of the series.

23 *Obv.* VICTORIA. DEL. GRA : BRITT : REGINA : FID : DEF : IND : IMP MDCCCXCVII. The crowned and laureated bust of the Queen to the left ; before the bust is the inscription IN | COMMEMO | RATIONEM | ANNI | REGNI and behind LX over a sprig of oak.

Rev. The arms of Great Britain in the centre surrounded by two rows of shields, fifty-five in all, inscribed with the names of the different Colonies. The Canadian ones are CANADA PROPER | NOVA SCOTIA | P E ISLAND | B COLUMBIA | W TERRITORIES | N BRUNSWICK | MANITOBA | NEW FOUNDLAND ; under the arms is the inscription THE BRITISH EMPIRE radiated and the date A. D. 1897. ; at the bottom is a circle enclosing the inscription PEACE LOVE AND UNION and four hands clasped in the shape of a Greek cross ; to the left of the

circle RD 285992. and below the signature SPINK & SON LONDON ; size 76 m. ; br. and w. m.

- 24 *Obv.* VICTORIA QUEEN AND EMPRESS. Crowned and laureated bust of the Queen to the left ; in front of the bust is the inscription TO | COMMEM | ORATE | THE | 60th | YEAR and behind OF HER | MAJESTY'S | REIGN.

Rev. DOMINION OF CANADA THE R^T HON THE EARL OF ABERDEEN GOV^R GENERAL. The arms of Great Britain to the left and Canada to the right crowned, motto DIEU ET MON DROIT ; under the ribbon the signature SPINK. LONDON below the arms the monogram V R I ; size 38 m., w. m.

- 25 *Obv.* Same as No. 24 but with the signature F. BOWCHER F under the bust.

Rev. Same as No. 24, size 38 m., br.

- 26 *Obv.* Same as No. 24 but with the signature F BOWCHER F under the bust and points between the words QUEEN. AND. EMPRESS. There are other slight differences in the detail.

Rev. Same as 24, size 38 m., br.

These four medals were struck for sale in Canada to those celebrating the Jubilee.

- 27 *Obv.* Same as No. 26.

Rev. 1837 DIAMOND JUBILEE 1897 The arms of London, Ont. As in No. 14, under the arms the inscription LONDON ONTARIO | JOHN W. LITTLE,

MAYOR ; below the inscriptions is a shield bearing the arms of Great Britain and a ribbon inscribed GOD BLESS OUR QUEEN ; at the bottom the signature SPINK & SON LONDON ; size 38 m., w. m.

This medal was distributed among the children of the public schools of London, Ont. by the Mayor.

JOSEPH MOORE

This is an old established engraver of Birmingham who has engraved a number of dies for Canadian medals.

28 *Obv.* NOCES DE DIAMANT DE SA MAJESTE LA REINE VICTORIA A MONTREAL coronated and veiled bust of the Queen to the left, before it 1837 behind 1897 below 22 JUIN the top of the 7 in 1897, below the T in Victoria.

Rev. ASSOCIATION ST. JEAN BAPTISTE SECTION ST. JOSEPH MONTREAL. Arms of the St. Jean Baptiste Society with a sprig of maple on either side ; size 25 m., br.

Struck for sale to members of the Society and their friends during the Jubilee procession, only 335 were struck when the obverse die broke. The reverse die was engraved for a school prize given by the Society.

29 *Obv.* Similar to No. 28 but the top of the 7 is above the T in Victoria ; the bust is slightly larger.

Rev. Same as No. 28 ; size 25 m., br.

The number struck was 1766.

S. H. QUINT & SON

This is a firm of engravers and medallists doing business in Philadelphia.

30 *Obv.* VICTORIA QUEEN. AND. EMPRESS crowned and laureated bust of the Queen to the left, before it 1837 behind 1897.

Rev. CANADA. A garter inscribed TO COMMEMORATE THE SIXTIETH. YEAR. OF. MAJESTY'S. REIGN within the garter is a shield bearing the arms of Great Britain ; outside is a narrow wreath of maple leaves with the date 1897 below, at the bottom is the signature QUINT PHILA ; size 38 m., bronze and aluminum.

This medal was distributed among the school children of Montreal by the "Star" newspaper in aluminum. The same medal was distributed in bronze and silver as prizes by the Montreal Exposition Co. at their exhibition held in August 1897.

31 *Obv.* GCD BLESS OUR QUEEN 1837-1897. Crowned and laureated bust of the Queen to the left. The crown is inscribed EMPRESS.

Rev. 60 | YEARS | PEACE | PURITY | PROSPERITY | AND | POWER | IN | CANADA ; size 25 m., brass.

Ten thousand were struck for the Baily Donaldson Company and sold by them, mainly in Montreal and Ottawa.



