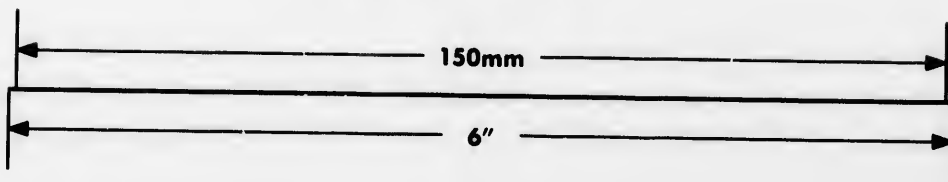
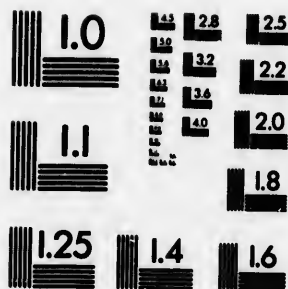
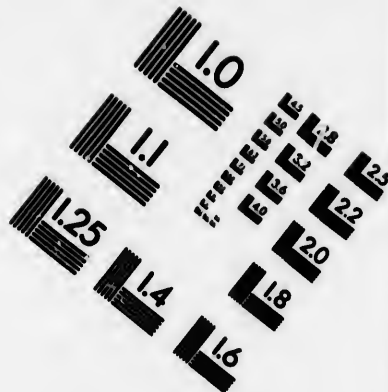
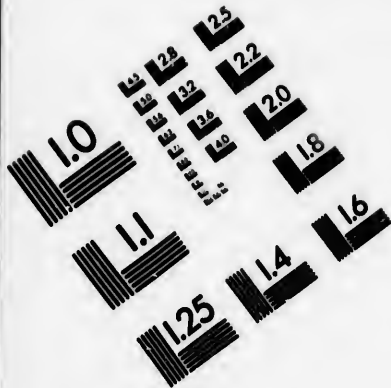


# IMAGE EVALUATION TEST TARGET (MT-3)



**APPLIED IMAGE . Inc**  
 1653 East Main Street  
 Rochester, NY 14609 USA  
 Phone: 716/482-0300  
 Fax: 716/268-5989

© 1993, Applied Image, Inc., All Rights Reserved

**CIHM  
Microfiche  
Series  
(Monographs)**

**ICMH  
Collection de  
microfiches  
(monographies)**



**Canadian Institute for Historical Microreproductions / Institut canadien de microreproductions historiques**

**© 1993**

Technical and Bibliographic Notes / Notes techniques et bibliographiques

The Institute has attempted to obtain the best original copy available for filming. Features of this copy which may be bibliographically unique, which may alter any of the images in the reproduction, or which may significantly change the usual method of filming, are checked below.

L'Institut a microfilmé le meilleur exemplaire qu'il lui a été possible de se procurer. Les détails de cet exemplaire qui sont peut-être uniques du point de vue bibliographique, qui peuvent modifier une image reproduite, ou qui peuvent exiger une modification dans la méthode normale de filmage sont indiqués ci-dessous.

Coloured covers/  
Couverture de couleur

Coloured pages/  
Pages de couleur

Covers damaged/  
Couverture endommagée

Pages damaged/  
Pages endommagées

Covers restored and/or laminated/  
Couverture restaurée et/ou pelliculée

Pages restored and/or laminated/  
Pages restaurées et/ou pelliculées

Cover title missing/  
Le titre de couverture manque

Pages discoloured, stained or foxed/  
Pages décolorées, tachetées ou piquées

Coloured maps/  
Cartes géographiques en couleur

Pages detached/  
Pages détachées

Coloured ink (i.e. other than blue or black)/  
Encre de couleur (i.e. autre que bleue ou noire)

Showthrough/  
Transparence

Coloured plates and/or illustrations/  
Planches et/ou illustrations en couleur

Quality of print varies/  
Qualité inégale de l'impression

Bound with other material/  
Relié avec d'autres documents

Continuous pagination/  
Pagination continue

Tight binding may cause shadows or distortion along interior margin/  
La reliure serrée peut causer de l'ombre ou de la distorsion le long de la marge intérieure

Includes index(es)/  
Comprend un (des) index

Blank leaves added during restoration may appear within the text. Whenever possible, these have been omitted from filming/  
Il se peut que certaines pages blanches ajoutées lors d'une restauration apparaissent dans le texte, mais, lorsque cela était possible, ces pages n'ont pas été filmées.

Title on header taken from: /  
Le titre de l'en-tête provient:

Title page of issue/  
Page de titre de la livraison

Caption of issue/  
Titre de départ de la livraison

Masthead/  
Générique (périodiques) de la livraison

Additional comments: /  
Commentaires supplémentaires:

This item is filmed at the reduction ratio checked below/  
Ce document est filmé au taux de réduction indiqué ci-dessous.

10X	12X	14X	16X	18X	20X	22X	24X	26X	28X	30X	32X
<input type="checkbox"/>	<input type="checkbox"/>	<input type="checkbox"/>	<input type="checkbox"/>	<input type="checkbox"/>	<input type="checkbox"/>	<input checked="" type="checkbox"/>	<input type="checkbox"/>	<input type="checkbox"/>	<input type="checkbox"/>	<input type="checkbox"/>	<input type="checkbox"/>

The copy filmed here has been reproduced thanks to the generosity of:

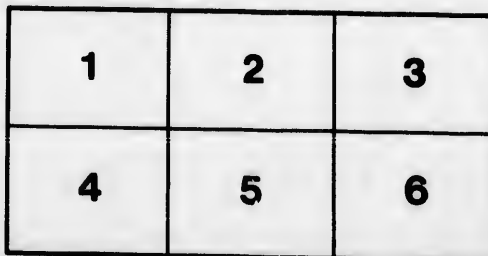
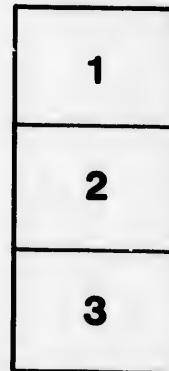
Library  
Agriculture Canada

The images appearing here are the best quality possible considering the condition and legibility of the original copy and in keeping with the filming contract specifications.

Original copies in printed paper covers are filmed beginning with the front cover and ending on the last page with a printed or illustrated impression, or the back cover when appropriate. All other original copies are filmed beginning on the first page with a printed or illustrated impression, and ending on the last page with a printed or illustrated impression.

The last recorded frame on each microfiche shall contain the symbol  $\rightarrow$  (meaning "CONTINUED"), or the symbol  $\nabla$  (meaning "END"), whichever applies.

Maps, plates, charts, etc., may be filmed at different reduction ratios. Those too large to be entirely included in one exposure are filmed beginning in the upper left hand corner, left to right and top to bottom, as many frames as required. The following diagrams illustrate the method:



L'exemplaire filmé fut reproduit grâce à la générosité de:

Bibliothèque  
Agriculture Canada

Les images suivantes ont été reproduites avec le plus grand soin, compte tenu de la condition et de la netteté de l'exemplaire filmé, et en conformité avec les conditions du contrat de filmage.

Les exemplaires originaux dont la couverture en papier est imprimée sont filmés en commençant par le premier plat et en terminant soit par la dernière page qui comporte une empreinte d'impression ou d'illustration, soit par le second plat, selon le cas. Tous les autres exemplaires originaux sont filmés en commençant par la première page qui comporte une empreinte d'impression ou d'illustration et en terminant par la dernière page qui comporte une telle empreinte.

Un des symboles suivants apparaîtra sur la dernière image de chaque microfiche, selon le cas: le symbole  $\rightarrow$  signifie "A SUIVRE", le symbole  $\nabla$  signifie "FIN".

Les cartes, planches, tableaux, etc., peuvent être filmés à des taux de réduction différents. Lorsque le document est trop grand pour être reproduit en un seul cliché, il est filmé à partir de l'angle supérieur gauche, de gauche à droite, et de haut en bas, en prenant le nombre d'images nécessaire. Les diagrammes suivants illustrent la méthode.

ONTARIO DEPARTMENT OF AGRICULTURE.

INSECTS AND PLANT DISEASES.

INSTRUCTIONS IN SPRAYING.

SOLUTIONS RECOMMENDED.

1. BORDEAUX MIXTURE.

Copper sulphate.....	4 pounds.
Lime (fresh) .....	4 "
Water .....	40 gallons.

Suspend the copper sulphate in four gallons of hot water. This may be done by putting it in a bag of coarse material, and hanging it so as to be covered by the water. Slake the lime in the same quantity of hot water.

Do not at once mix the two solutions thus made, but proceed as follows :— Put one of the solutions in the barrel, add a few pails of water, then add the other solution and bring it all up to 40 gallons. Use only fresh Bordeaux mixture, or what is not over two days old. The copper sulphate and lime solutions should not be used until required for use. Strain the solutions.

Only the best fresh-slaked stone lime should be used. If the lime is good the above amount is likely to be sufficient. It is an easy matter to know how much lime is required by using what is termed the ferro-cyanide of potassium test. This substance can be got at any druggist's, and very little is required. Take a small bottle (2 oz.) and get it filled with a saturated solution of this compound. If there is not plenty of lime in your mixture, a drop of the test added to it turns brown. Add more lime and stir. As soon as the test fails to color in coming in contact with your mixture, it indicates there is sufficient lime present to neutralize the effects of the copper sulphate. Use wooden vessels in preparing the Bordeaux mixture.

2. AMMONIACAL COPPER CARBONATE SOLUTION ("Cupram").

Copper carbonate.....	1 ounce.
Strong ammonia sufficient to dissolve the copper carbonate.	
Water .....	10 gallons.

This solution is not much used, and is recommended only in cases where the fruit is so far advanced that it would be disfigured by using the Bordeaux mixture.

3. PARIS GREEN MIXTURE.

Paris green .....	1 pound.
Water .....	200 gallons.
Lime .....	16 lbs. freshly slaked.

Use 200 gallons water in a mixture for apple trees, 250 for plum trees, and 300 for peach trees.

4. HELLEBORE.

White hellebore (fresh).....	1 ounce.
Water.....	3 gallons.

5. PYRETHRUM.

Pyrethrum powder (fresh) .....	1 ounce.
Water.....	4 gallons.

6. WHALE-OIL SOAP SOLUTION. Dissolve 1 lb. James Good's caustic potash whale-oil soap No. 3 in 7 gallons of hot water.

7. KEROSENE EMULSION.

Hard soap.....	$\frac{1}{2}$ pound, or soft soap	1 quart.
Boiling water (soft) .....		1 gallon.
Coal oil .....		2 gallons.

After dissolving the soap in the water, add the coal oil and stir well for 5 to 10 minutes. When properly mixed, it will adhere to glass without oiliness. A syring or pump will aid much in this work. In using, dilute with from 9 to 15 parts of water. Kerosene emulsion may be prepared with sour milk (1 gallon), and coal oil (2 gallons), no soap being required. This will not keep long.

8. TOBACCO DECOCTION.

Refuse tobacco .....	2 pounds.
Water .....	5 gallons.

Boil the mixture for 30 minutes or more, until a dark brown tea-colored solution is obtained. Keep it covered until cool. It may then be used undiluted for spraying infested plants.

NOTES.

1. When there is danger of disfiguring fruit with the Bordeaux mixture use the ammoniacal copper carbonate solution.

2. Experience in spraying during the past three years indicates that it is best to use the combined insecticide and fungicide, commencing as soon as the buds begin to swell, again when the leaves appear, and continue it at intervals of 10 to 15 days, until the trees have been sprayed 3 to 5 times, which will depend upon the weather. In the case of a rainy season, it may be necessary to spray at least five times, while if dry, and the mixtures have been allowed to remain on the foliage, then three or four times may be sufficient.

CAUTION In no case spray while the trees are in bloom, but immediately after. It is contrary to law, and punishable by a fine of from \$1 to \$5.

3. The combined insecticide and fungicide, containing Paris green and Bordeaux mixture, is to be used for insects that chew and injurious fungi, but kerosene emulsion alone for those insects that suck the juices of plants, such as aphid, thrip, red spider, clover mite, oyster-shell bark-louse, San Jose scale, etc.

4. A stock solution for the preparation of Bordeaux mixture may be prepared as follows: Dissolve 25 pounds of copper sulphate in 25 gallons of water.

One gallon of slake 25 pounds contains two copper sulphate not being sufficient. Now fill up to green.

5. Preparation thorough as done is not sufficient, properly done, the plant. Applied in this falls to the ground.

6. No mixture water should be the mixtures a

7. Use a more expeditious

8. To keep other cover.

9. As much working with abrasion of the settle on the h absorption or resemble the nausea, eruption which are soluble Paris green, w danger of poison proper precaution in diameter should When much w exposed parts a

10. The copper sulphate of the be had at from 20c. per lb. Th the entire season

1. APPLE. pillar, canker w First spray the mixture) w

One gallon of this contains one pound of the copper sulphate. In another barrel slake 25 pounds of good lime, and add  $12\frac{1}{2}$  gallons of water. One gallon of this contains two pounds of lime. To make the mixture, take four gallons of the copper sulphate solution and two of the lime. If there is any doubt about there not being sufficient lime, try the test already referred to under Bordeaux mixture. Now fill up the amount to 40 gallons with water. Add four ounces of Paris green.

5. Prepare the mixtures well, apply them at the proper time, and be as thorough as possible in the work. Three fourths of the so called spraying done is not spraying at all. The trees are only drenched. When spraying is properly done, the mixture is broken up like a mist and settles on every part of the plant. A great deal more of the mixture will remain on the plant when applied in this way, and there is also a saving of material, as every drop which falls to the ground is lost.

6. No mixture should be left in the pump or barrel, and, after using, clean water should be pumped so as to clean the outfit. This is important, as some of the mixtures act chemically on the metal of the pump.

7. Use a Y and two nozzles. The work can be done just as well and much more expeditiously.

8. To keep Bordeaux mixture off horses and harness use coarse linen or other cover.

9. As most of the spraying mixtures are poisonous, care should be taken in working with them. They should not be used when there is any wound or abrasion of the skin exposed, and care should be taken not to allow the spray to settle on the hands or face, or to be inhaled. Arsenites taken into the system by absorption or inhalation produce symptoms of poisoning. In mild cases they resemble the symptoms produced by poisoning; in severe cases, headaches, nausea, eruptions, boils and ulcers are said to result. The danger from arsenites, which are soluble in water such as London purple, are much greater than from Paris green, which contains very little water-soluble arsenic. There is more danger of poisoning by absorption when perspiring freely. However, by taking proper precaution, there need be little fear. A leather washer about four inches in diameter should be fitted just below the nozzle, which will prevent the drip from reaching the hands. As far as possible keep to windward of the nozzle. When much work is to be done, rubber gloves should be worn. The face and exposed parts should be washed immediately after spraying.

10. The cost of spraying with Bordeaux mixture is not very great. Copper sulphate of the best quality (which is the only kind which should be used) can be had at from 6c. to 7c. per lb. by the barrel, and Paris green at from 15c. to 20c. per lb. The cost for material to properly spray an average apple tree for the entire season should not exceed from 6c. to 7c.

### TREATMENT.

1. APPLE. Treatment for destroying *codling moth*, *bud moth*, *tent caterpillar*, *canker worm*, *apple spot*, *leaf blight*, *pistol case-bearer* and *powdery mildew*.

First spraying: Bordeaux mixture and Paris green (4 oz. to the barrel of the mixture) when the buds are swelling.

Second : Bordeaux mixture and Paris green before the blossoms open.

Third : Bordeaux mixture and Paris green when the blossoms have fallen.

Fourth and fifth spraying : Bordeaux mixture and Paris green at intervals of ten to fifteen days, if necessary.

No definite date can be named after which it would be safe to cease spraying for apple scab. The orchard should be watched after the third or fourth application, and the treatment again applied if scab appears on the fruit or leaves. Many apple growers who sprayed in 1897 until the end of June, and neglected to watch their orchards afterward, lost heavily. The scab appeared very late in the season last year, and all the experimental orchards were given an extra application in the early part of July, which largely accounts for the splendid results obtained.

We cannot always control the codling moths by spraying, especially in the Southern section of Ontario where they continue to propagate long after the regular spraying season is over.

To insure a clean crop of apples, if the codling moth is bad in your orchard, in addition to spraying, use bandages around the trees. Make them from four to six inches wide, three or four inches thick, of any kind of cloth. Old bags, sacks, carpets, coarse material of any kind will do. Bands of straw and tow have been used with some success. The first week in June, bind one around each tree three or four feet from the ground ; secure it either with cord or small nails ; take it off every fifteen days and dip in hot water ; or put it through an ordinary clothes wringer, which may be attached to a wheelbarrow and taken from tree to tree. Have sufficient pressure to crush all insects.

After a careful inspection in 1898 of badly infested trees, on which bandages were used, no cocoons were found except in the bandages, and in crevices of the bark under the bandages. It will take very careful inspection to find all of them, as they are carefully concealed and very much resemble the bark. All coarse, loose bark should be scraped from the trees in the early spring, as many other enemies of the apple tree harbor there also.

The first brood of moths appear about the time apple trees bloom, and begin depositing eggs as soon as the apples have formed on any part of the apple or on the leaves or stem. Each moth lays from 80 to 100 eggs. The egg laying period lasts from 8 to 12 days. The eggs hatch in from six to eight days. The larva at once makes its way into the apple, where it remains from three to four weeks, when it leaves the apple and locates in some suitable place to pass the transformation stage, which is usually under or in the crevices of the coarse bark of the tree from whence it came, but sometimes on fences, buildings or rubbish, wherever it can find shelter. In one day it constructs a cocoon in which it enters its third or pupa stage. From this it emerges in from two to three weeks a matured moth prepared to repeat its life history. The latter broods remain in the cocoon in the larvæ stage until the following spring.

2. PEAR. *Leaf blight, scab, and codling moth*, the same as for the apple.

3. PLUM. *Curculio, brown rot and leaf blight*.

First : Bordeaux mixture and Paris green before the flower buds open.

Second : Bordeaux mixture and Paris green as soon as the petals have fallen.

Third : Bordeaux mixture and Paris green in seven to ten days after.

Fourth spraying : Bordeaux mixture in ten to fifteen days after.

4. PEAC  
Spray at  
mixture only  
Fourth s  
ing the fruit  
In spray  
strength may  
only half stre

5. CHER  
First spr  
ing ; if aphid  
Second :  
Third : 1

6. GRAP  
First Spr  
inch in diam  
Second :  
Third an  
Paris Gre  
when the larv

7. RASPE  
First : B  
Second :  
Third spr

8. CURR  
First spr  
soon as the lea  
Second spr  
For worm

9. TOMAT  
Spray wit  
times, if neces

10. POTAT  
First spr  
100 gallons of  
Second spr  
inches high.

Third and  
days, if neces  
Spraying  
and the rotting

11. CABB  
Pyrethrum  
on (one part p

12. STRAW  
Bordeaux  
will control thi  
after they begi



4. PEACH. *Brown fruit rot, leaf blight, plum curculio and peach curl.*  
 Spray at first as in case of plum, but after growth begins make Bordeaux mixture only of half strength.

Fourth spraying: Ammoniacal copper carbonate, if any danger of disfiguring the fruit with Bordeaux mixture.

In spraying peach trees for curl leaf or peach rot Bordeaux mixture full strength may be used while the tree is dormant. After growth begins use it only half strength.

5. CHERRY. *Aphis, slug, brown rot and leaf blight.*

First spraying: Bordeaux mixture and Paris green as the buds are breaking; if *aphis* appears use kerosene emulsion alone or whale-oil soap.

Second: Bordeaux mixture and Paris green as soon as the blossoms fall.

Third: Bordeaux mixture and Paris green ten to fifteen days after.

6. GRAPES. *Mildew, black rot, flea beetle, and leaf-eating insects.*

First Spraying: Bordeaux mixture and Paris green when the leaves are one inch in diameter.

Second: Bordeaux mixture and Paris green when flowers have fallen.

Third and fourth: Bordeaux mixture at intervals of ten to fifteen days.

Paris Green alone when the beetle is attacking the buds in the spring, or when the larva is attacking the leaves in summer.

7. RASPBERRY. *Anthraxnose, leaf blight and saw-fly larvæ.*

First: Bordeaux mixture and Paris Green just before growth begins.

Second: Bordeaux mixture and Paris green about when first blossoms open.

Third spraying: Bordeaux mixture when the fruit is gathered.

8. CURRANT AND GOOSEBERRY. *Worms and mildew.*

First spraying: Potassium sulphide, Bordeaux mixture and Paris green as soon as the leaves expand.

Second spraying: The same ten to fifteen days later.

For worms alone, hellebore or Paris green will be effective.

9. TOMATO. *Rot and blight.*

Spray with Bordeaux mixture, as soon as rot or blight appears, for three times, if necessary, at intervals of ten to fifteen days.

10. POTATO. *Blight and beetles.*

First spraying: Paris green as soon as the beetles appear (one pound to 100 gallons of water).

Second spraying: Bordeaux mixture and Paris green when plants are six inches high.

Third and fourth sprayings: Bordeaux mixture at intervals of ten to fifteen days, if necessary.

Spraying with Bordeaux mixture will prevent the blighting of the plants and the rotting of the tubers.

11. CABBAGE WORM.

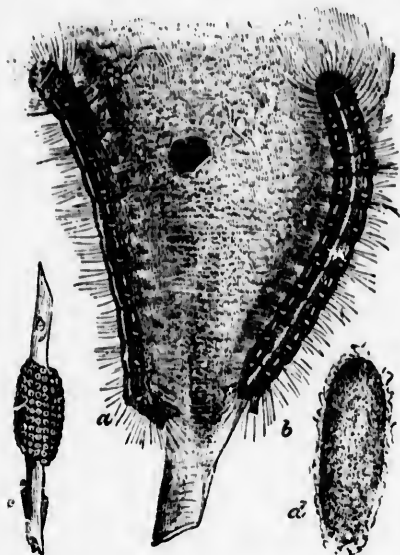
Pyrethrum applied in solution (one ounce to four gallons of water) or dusted on (one part pyrethrum to seven parts flour) for the cabbage worm.

12. STRAWBERRY. *The rust or leaf-blight.*

Bordeaux mixture, when it can be applied without disfiguring the fruit, will control this disease. Apply at intervals of two or three weeks on new beds after they begin to make runners.

## INJURIOUS INSECTS.

The following are some of the most common injurious insects that are troublesome in the garden and orchard. To destroy these, syringing as directed will be effective. To destroy insects use only an insecticide, but if treating for a fungoid pest at the same time use a combined fungicide and insecticide.

1. TENT CATERpillARS.—*Clisiocampa Americana* and *C. distria*.

Tent Caterpillar: a and b, caterpillars; c, egg cluster; d, cocoon.



Tent Caterpillar Moth.

These insects weave large webs in the branches of the apple tree and do much damage feeding upon the foliage of the tree. They also attack the plum and cherry. The eggs—200 to 300—are laid in rings upon the twigs of the trees and can be readily seen, so that many of them might be easily destroyed during the winter. The caterpillars grow rapidly. *Americana* has a white strip down the back, and *distria* a series of white spots, and thus they are readily distinguished from each other. Both develop into brown moths. The accompanying cut represents the different stages of the insects, *C. Americana*.

**Remedy.**—1. Collect the egg cluster in winter 2. Crush the "tents" when full of caterpillars. 3. Apply Paris green with lime or with Bordeaux mixture.

The young caterpillars mature in the fall and remain dormant in the egg cells during winter, whence they emerge during the first warm days of spring. They have been discovered on the buds as early as the fifteenth of April waiting for the young leaves to appear. If the tree is sprayed with Paris green mixture at this period their destruction is almost certain.

Much may be done to lessen the ravages of the tent caterpillars by the destruction of the egg-masses in the fall, winter, and spring, and by burning the tents as soon as they appear in the spring, but there seems no practicable method of dealing with the tentless caterpillars, which come from the woods to the orchards and lawns. These make their home primarily in the forests, where it is impossible to clear off the egg-masses.

All shade trees should be sprayed, as soon as leaves are opened, with arsenate of lead solution, made by dissolving in a wooden pail three ounces of acetate

of lead in  
arsenate of  
into a barre  
Tar bands  
may be use

The ca  
with care th  
like masses  
and even o  
during the  
spraying wi  
of them. T  
the trunks  
ground will  
from ascend

## 3. CODLING M

The eggs  
the leaves a  
skin of the  
hatched the  
where it f  
Affected ap  
often conta  
cocoon are  
in other she

The moth  
trees are in  
pests that a

of lead in one quart of water, and in another wooden pail dissolve one ounce of arsenate of soda in one pint of water; empty the contents of each of the pails into a barrel of water (40 gallons). Stir well and add one quart of glucose. Tar bands, moreover, should be placed around the trunks, and pyrethrum powder may be used to advantage about the tree.

2. THE TUSSOCK MOTH — *Orgyia leucostigma*



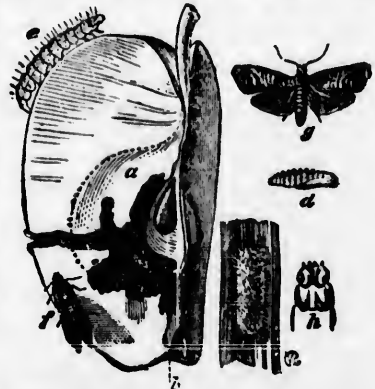
Tussock Moth: a, wingless female on mass of eggs; b, caterpillar; c, female pupa; d, male pupa; e, male moth; f, full grown caterpillar.

The caterpillar of the Tussock Moth is very destructive some years, but with care the trees may be kept quite free from its ravages. The white, froth-like masses of eggs, which remain over winter on the trunks and larger branches, and even on buildings and fences near by, may be scraped off and destroyed during the winter. If a few survive this treatment to show themselves as larva, spraying with Paris green will kill most of them. The bands of tar brushed on the trunks three or four feet from the ground will prevent the wingless female from ascending the trees to lay her eggs.

3. CODLING MOTH. — *Carpocapsa pomonella*.

The eggs of this tiny moth are laid on the leaves and stems and sometimes on the skin of the young apple. As soon as hatched the larva burrows into the apple, where it feeds until fully developed. Affected apples fall to the ground, and often contain the worm in them. The cocoons are frequently under the bark and in other sheltered spots.

The moth appears about the time the trees are in bloom, and is one of the worst pests that attacks the apple.



Codling Moth: a, burrow; b, entrance hole; c, larva; d, pupa; e, moth.

ects that are g as directed f treating for ticides.



Moth.

weave large of the apple damage feed- of the tree. e plum and 200 to 300 s upon the and can be at many of y destroyed The cater- Americana n the back, s of white are readily each other. own moths t represents the insects,

e "tents" Bordeaux

s in the egg of spring. April wait- Paris green ars by the urning the ble method ods to the , where it

with arsen- of acetate

When the blossoms have just fallen the calyx leaves are widely opened. It is claimed by some of the best authorities that this is our best chance to deal an effective blow at the first brood of larvæ of codling moth, which usually enter the apple at this point. The trees should be thoroughly sprayed within a week after the blossoms have fallen that a quantity of poison may rest in the calyx cup and be protected by the leaves which close up rapidly and retain it for the first meal of the larvæ. If this spraying is followed by rain it will be necessary to repeat the application.

*Remedy*.—1. Feed the fallen apples which may contain larvæ. 2. Spray with Bordeaux mixture and Paris green, as directed for the treatment of the apple.

4. CANKER WORMS.—*Anisopteryx vernata* and *A. pometaria*.



Canker Worm (*f*) and eggs (*a, b, c*) moths appear in the fall. The wingless females in both species crawl up the trunks to lay their eggs upon the twigs.

These insects attack the plum, cherry and apple. The accompanying cuts illustrate *A. vernata*.

*Remedy*.—1. The females may be trapped by putting a band of some adhesive material around the tree.

2. Paris green is an effective remedy, as directed in the treatment of the apple, if used in time. If the worms are full grown and numerous, use six ounces of Paris green instead of four.

3. Tree collars.

5. OYSTER-SHELL BARK-LOUSE.—*Mytilaspis pomorum*.

This insect appears in the form of minute brown scale upon the bark of the apple tree, and being much the same color is difficult to distinguish. The eggs are beneath the scales. They hatch about the end of May or the beginning of June. The young lice are almost invisible; they seek the ends of the young twigs, where they become fixed, and continue to suck the juice from the twigs. Soon a scale forms over them. All scales the shape of an oyster-shell are females, and their eggs are laid under the scale. The scale of the male is more oblong and is rarely seen.

*Remedy*.—1. In winter, or early spring, scrape off the rough bark from the trunk and large limbs, and rub in with a scrubbing brush the following solution: One quart soft soap, or one-quarter pound hard, in two quarts boiling water;



Oyster-Shell Bark-Louse.

take seven  
lice are mo  
parts water

This i



Pea

*Remed*  
pyrethrum,

There  
tive as the  
week in Jun

There i  
in the plum,  
the larvæ le  
six weeks.

a black hun  
stout body.  
and appear  
trees are in  
upon the che  
curculio worl  
days only.

*Remedy*.—  
evening. A  
and may be  
2. Gather  
they fall.

3. Spray w  
green as dire  
Spray once b  
as the petals.

Take equ  
the consisten  
four gallons o  
to where the  
little to make

take seven parts of this and add one part of carbolic acid; then, when the young lice are moving (May or June), spray with kerosene emulsion diluted with ten parts water.

#### 6. PEAR TREE SLUG.—*Eriocampa cerasi*.

This insect may be found attacking the pear, plum and cherry.



Pear tree slug, various sizes.

The eggs are laid about June. The larva is about one-half inch in length and is thicker towards the head, of a somewhat greenish-black color and slimy. It has many legs. The pupa stage is spent in the ground and lasts two weeks. The imago is a small, four-winged black fly. The slug feeds on the upper surface of the leaf. It was quite common during 1896.

**Remedy.**—Spraying with Bordeaux mixture and Paris green, hellebore or pyrethrum, in the common proportions.

There is a second brood about the middle of July which is quite as destructive as the first brood. Spray with mixture of Bordeaux and Paris green first week in June and middle of July.

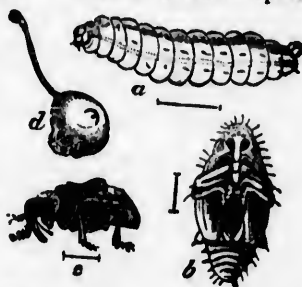
#### 7. PLUM CURCULIO.—*Conotrachelus nenuphar*.

There is no insect better known than this little beetle. The egg is deposited in the plum, where it hatches. The affected fruit soon falls to the ground, and the larvae leave the plums, pass into the ground, where they remain for about six weeks. The imago is a small greyish beetle, one-fifth of an inch long, with a black hump on the middle of each wing case. It has a curved snout and a stout body. The beetles hide themselves during the winter in sheltered spots, and appear in the spring about the time the trees are in bloom. This insect is also found upon the cherry, peach, and even apple. The curculio works on the fruit for about eighteen days only.

**Remedy.**—1. Jarring the trees morning and evening. At this time many beetles will drop and may be collected on a sheet placed below.

2. Gather and destroy the affected plums as they fall.

3. Spray with Bordeaux mixture and Paris green as directed for the treatment of the plum. Spray once before the trees bloom, again as soon as the petals fall, and repeat about a week after.



Plum Curculio: a, grub; b and c, beetle; d, egg laying on plum.

#### 8. TO PROTECT THE PEACH TREE FROM THE BORER.

Take equal parts of hardwood ashes and fresh lime, add water until it has the consistency of paint; to this add one ounce of crude carbolic acid to each four gallons of mixture. Apply with a brush to the trees from the limbs down to where the roots join the trunk. It is necessary to clear the ground away a little to make a perfect job. Apply from 1st to 15th of June.

9. CURRANT WORM.—*Nematus ribesii*.

Currant Worms and the Saw Flies to which they change.

This insect is very troublesome upon currant and gooseberry bushes. It lays its eggs early in the spring, on the under side of the leaves, in rows along the veins. These hatch in about ten days, and the young worms appear. The larva, when full grown, is about three-quarters of an inch in length, of a greenish color, with dark spots, and has many legs. It spins a brown cocoon, of paper-like texture, which is found sometimes on the ground among the dried leaves, or on the bush, attached to the stems or leaves. This represents the pupa condition.

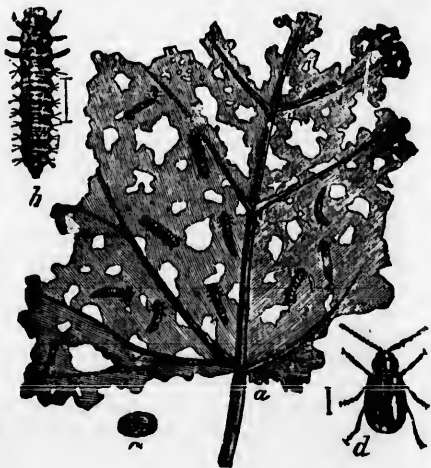
The imago appears in about two weeks after the pupa stage has been entered. The male is much smaller than the female, the body black, with some yellow spots above, while in the female the body is mostly yellow. Both have four membranous wings. A second brood is of common occurrence.

*Remedies.*—1. Hellebore, one ounce in three gallons of water. It may also be applied as a dry powder, mixing it with three or four parts of flour.

2. Paris green for the first brood, but care must be taken not to continue this if the fruit is likely to be affected.

10. GRAPE-VINE BEETLE.—*Haltica chalybea*.

The eggs are deposited on the under side of the leaves. The larva is about one-third of an



inch long  
dition is

The  
passes th  
is very c  
larval co

*Rem*  
combined

2. D

3. J

The  
tree. Th  
about thr  
shallow c  
bark and  
cuts a pas

Round

In this cha  
it is an inc  
borer, whic  
The in  
on the win



Flat-Headed  
Borer, *Chrysol*  
*a* Fabr: *a*, lar

inch long, brownish, with several black dots on the body. The pupa condition is passed in the ground, and continues for about three weeks.

The imago is a small, polished beetle, about one-fifth of an inch long. It passes the winter in sheltered spots, under leaves, or around the roots, and is very destructive in the spring to the young buds, and afterwards, in the larval condition, to the leaves.

*Remedies.*—1. Paris green, three ounces to fifty gallons of water, or combined with Bordeaux mixture as directed under treatment of the grape.

2. Dust pyrethrum powder upon the vines attacked.

3. Jarring the vines in the morning and collecting the beetles.

### 11. ROUND-HEADED BORER.—*Saperda candida*.

The eggs are deposited about June, near the base of the trunk of the apple tree. The larva eats its way through the outer bark to the inner, and takes about three weeks to develop. It works in the sapwood, where it forms flat, shallow cavities, filled with sawdust-like castings. These are often seen on the bark and indicate where the "borer" is at work. As it reaches maturity, it cuts a passage upwards into the solid wood, and then curves towards the bark.



Round-headed Apple Tree Borer, *Saperda candida*: a, larva; b, pupa; c, beetle.

In this channel it enters the pupa stage about spring. When fully developed it is an inch long, with a round head that distinguishes it from the flat-headed borer, which also affects the apple tree.

The imago is a slender beetle, one inch long, with two broad, whitish stripes on the wing covers, and long jointed antennae. It appears about June.

### 12. FLAT-HEADED BORER.—*Chrysobothris femorata*.

This insect also attacks the trunk of the apple tree, but it lays its eggs higher up the tree than the preceding one. The larva is a pale yellow, an inch long, and has a well-marked flat head, much wider than the body. It is sometimes found even in the limbs, and is not so long in developing as the round-headed borer. It cuts flat channels in the sapwood, and sometimes girdles the tree. Castings and discolored bark indicate its presence. It finally bores into the solid wood, and becomes a pupa for about two weeks, and then emerges as an imago about half an inch long, somewhat flat, and of a greenish black color, with three raised lines on each wing-cover. The legs and under side of the body present a coppery lustre.



Flat-headed Apple Tree Borer, *Chrysobothris femorata* Fabr.: a, larva; b, beetle.

oushes. It  
rows along  
pear. The  
of a green-  
n, of paper-  
eried leaves,  
pupa con-

e has been  
with some

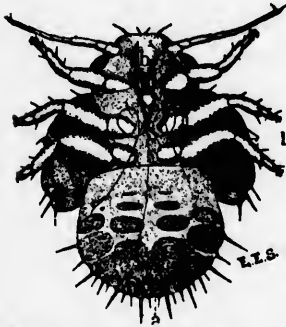


**Remedies.**—1. Examine the trees in autumn, and where the sawdust-like castings indicate the presence of the "borer," a stiff wire may be pushed in and the larva killed, or sometimes the larva can be cut out with a knife.

2. About the beginning of June, apply the following mixture to the trunk of the tree; one pound of hard soap, or one quart soft in two gallons of water; heat to boiling, and add one pint crude carbolic acid; make a second application in three weeks. This can be well done by using an old scrubbing brush to rub it in.

### 13. THE PEAR TREE PSYLLA — *Psylla pyricola*.

*The immature insect*—These curious, minute, oval, immature forms are called nymphs. The newly-hatched ones are yellow in color, with crimson eyes and can scarcely be seen with the unaided eye. During their growth they gradually acquire the black markings shown in the figure, and become tinged with red. A very conspicuous feature in the full grown nymph is the large black wing-pads on each side of the body.



Full-grown nymph of the pear psylla, ventral view, greatly enlarged.

*The adult insect*.—In this form the insect strikingly resembles a cicada or dog-day harvest-fly in miniature. Its general color is crimson with broad black bands across the abdomen. Its thickened femora enable it to jump like a flea. In the male insect the abdomen terminates in a large trough-shaped segment from which project upward three narrow copulating organs; the end of the abdomen of the female resembles a bird's beak.

**Remedy.**—Our experiments in 1892 showed that the nymphs in all stages were quickly killed by kerosene emulsion.\* Others who have tested it thoroughly report success.

Usually most of the damage is done in this State by the first brood of nymphs before June 15th. It is therefore very important that the insect should be checked early in the season. We now advise using the emulsion diluted with about fifteen parts of water, instead of with twenty-five, as it is more effective against the nymphs, and it will also kill the adult insects. As the nymphs begin to hatch just as the leaves are expanding, then is the time to begin spraying; about May 15th is usually the time in this State. Where they are numerous, a second or third spraying will be necessary. *The emulsion must be applied liberally and thoroughly*; it will not injure the tree in the least. It is much more difficult to fight the insect later in the summer, when the tree is in full foliage and many of the nymphs are covered with honey-dew. Watch for their appearance on the unfolding leaves in the spring and act promptly. Spray two or three times in a week if necessary; make every effort to prevent the development of a second brood.



*Psylla pyricola*, the adult insect, much enlarged.

(\*From Cornell University Agricultural Experimental Station Bulletin No. 108.)

The  
trunks at  
least five  
the adult  
whale oil  
believe it

This  
sometimes

Apple Tree  
*ocellana*;  
pupa.  
middle; t  
an inch ac  
blackberry

Remo  
ment of th

The  
either pur

Fall Web-

and the co  
ated with c

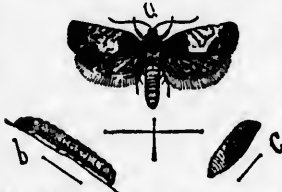
The S  
other varie  
throughout  
fluffy mass



*The Adults.*—In Bulletin 44 we suggested that a thorough washing of the trunks and larger branches of the trees in winter with kerosene emulsion (at least five per cent. kerosene), or a strong soap solution, would destroy many of the adults in hibernation in the crevices of the bark. It is reported that a whale oil soap solution, has been thus used very effectively in New Jersey. We believe it is a practical method, and should be practised in infected orchards.

#### 14. BUD MOTH.—*Tmetocera ocellana*.

This insect is fond of attacking both leaf and flower buds upon the apple, and sometimes proves very injurious. The half-grown *larva* winters over and appears in spring as a small brown caterpillar, just about the time the buds begin to open, and feeds upon them. It measures about half an inch when full grown. By rolling up one side of a leaf, and securely fastening it with silken threads, it forms a tube in which it enters the *pupa* stage, having lined the little chamber with a closely woven layer of silk. This condition lasts ten days. The *imago* is a small moth, resembling the codling moth in size and form. It is of an ash-gray color. The front wings have a whitish-gray band across the middle; the hind wings are a dusty brown. The expanded wings measure half an inch across. It also attacks pear, plum, cherry, quince and peach trees, and blackberry buds.



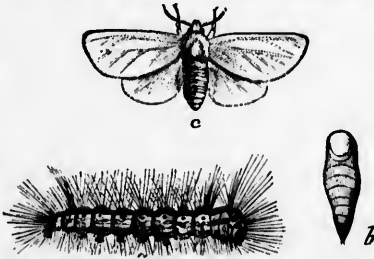
Apple Tree Bud Moth, *Tmetocera ocellana*; a, moth; b, larva; c, pupa.

*Remedy.*—Paris green added to Bordeaux mixture as directed for the treatment of the apple.

#### 15. THE FALL WEB-WORM.—*Hyphantria cunea*.

The *Fall Web-Worm* is another serious pest of shade trees. The moth is either pure white, or white spotted with black, and is a very pretty creature.

It lays a cluster of 300 or 400 eggs on the leaves. The caterpillars feed in colonies, and each colony spins a web wherever it feeds. When full grown, the caterpillars leave the web and crawl down the trunk to the ground to spin their cocoons, within which they pass the winter as pupæ. Several methods may be adopted to rid the trees of the pest. The collection of the cocoons, and the spraying with Paris green are both effective, but perhaps, the most effective mode of treatment is to burn the webs and the contained caterpillars. A long pole, to the end of which a swab saturated with coal oil is fastened, makes a good torch for burning the webs.



Fall Web-Worm—a, caterpillar; b, pupa; c, moth.

#### 16. THE SPRUCE GALL LOUSE.—*Chermes abietis*.

The *Spruce Gall Louse* is undoubtedly a serious pest of the white and other varieties of spruce. During the last few years it has done much damage throughout the Provinces. In early spring, about the first week in May, woolly, fluffy masses may be seen on the terminal twigs of the spruce, and if these be

dust-like  
ed in and

the trunk  
f water ;  
applica-  
brush to

forms are  
son eyes  
dded eye.  
quire the  
d become  
eature in  
ock wing-

the insect  
harvest-  
crimson  
men. Its  
e a flea.  
ates in a  
hich pro-  
organs ;  
resembles

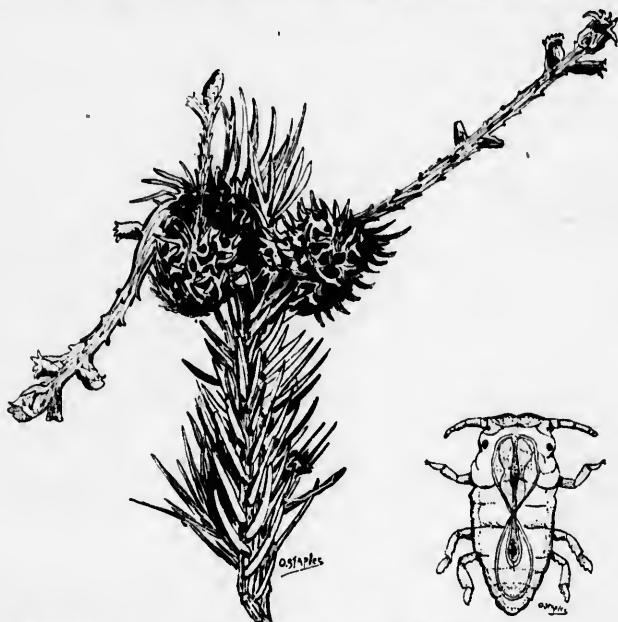
all stages  
d it thor-

brood of  
ct should



myricola, the  
sect, much  
arged.

examined large numbers of eggs can be found. In another week the lice hatch, and settle at the bases of the young shoots, which soon show the characteristic curl. The base of every infested leaf becomes enlarged and gall-like. The larvae are safe from insecticides as they now live within the base of the leaf.



About August 10th, the winged female adults appear, and prepare to lay eggs for a second brood. Lice soon hatch, and spread over the limbs, but those that survive the winter seek shelter at the base of buds. The second brood of adults appear at the beginning of May, when the fluffy, woolly egg masses are seen.



Asparagus Beetle (*Crioceris asparagi*); a, adult beetle; b, egg; c, young larvae; d, larva, full grown; e, pupa. (Chittenden. Year-book of Dept. of Agriculture for 1896.)

If the tobacco is killed. The lice make

17. As

*Aspa*  
in the Ni  
spotted as

The  
beetle, w  
latter is s  
spots.

The  
the first  
deposit eg  
grubs wh  
in a week  
ble some  
potato bee  
of yellow  
nearly tw  
asparagus  
adult beet

*Remo*  
as to force  
every few

2. So  
as traps, a  
the grubs o  
In all  
ounces to s

18

This s  
by three d  
the juices  
is difficult

*Remed*  
insects can

2. Spr  
whale-oil s  
day.

The r  
very destru  
color of the  
atmosphere  
development

lice hatch,  
characteristic  
The lar-  
leaf.

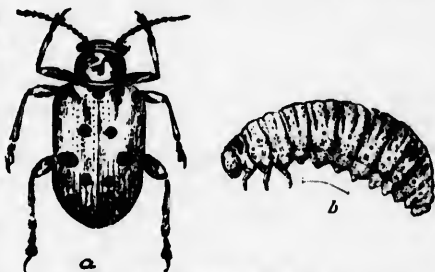
If the trees are sprayed thoroughly with a mixture of soap solution and tobacco solution soon after the eggs are observed, most of the young lice will be killed. The operation should be repeated in August, when the second brood of lice make their appearance.

17. ASPARAGUS BEETLES.—*Crioceris Asparagi* and *Crioceris 12-punctata*.

*Asparagus beetles*.—Two new pests of the asparagus have arrived in Ontario in the Niagara region during the past year. These are the common and the 12-spotted asparagus beetles.

The former is a steel-blue beetle, with white spots, and the latter is a reddish beetle with black spots.

The adult beetles appear about the first week of May, and soon deposit eggs on the shoots. The grubs which hatch from the eggs in a week are slug-like, and resemble somewhat the grubs of the potato beetle, but are grey instead of yellow. The grubs feed for nearly two weeks on the tender asparagus shoots, when they change into the pupa state. Ten days later the adult beetles emerge from the ground and begin to lay eggs for a second brood.



Twelve Spotted Asparagus Beetle (*Crioceris 12-punctata*); a, adult beetle; b, full-grown larva.

*Remedies*.—1. All asparagus plants should be cut down in early spring so as to force the beetles to lay their eggs on the new shoots which are cut regularly every few days. In this way the eggs have not time to hatch.

2. Some shoots may be allowed to grow during the cutting season to serve as traps, and at intervals sprayed with Paris Green, or cut and burned before the grubs develop.

In all cases the beds should be thoroughly sprayed with Paris Green (4 ounces to a barrel of water) at the close of the cutting season.

18. THE GRAPE-LEAF HOPPER OR THRIP.—*Erythroneura vitis*.

This small insect, about an eighth of an inch long, of a white color, marked by three dark bands, is sometimes troublesome on grape vines. It feeds upon the juices of the plant, and is usually upon the underside of the leaf, where it is difficult to reach in spraying.

*Remedy*.—1. Remove fallen foliage at the close of the season, so that the insects cannot find shelter during the winter.

2. Spray with kerosene emulsion diluted with ten parts water, or with whale-oil soap solution, on the under side of the leaves in the cooler part of the day.

19. RED SPIDER.—*Tetranychus telarius*.

The red spider is a very small insect—a true mite—and in some places is very destructive. It sucks the juices of the plants attacked, and causes the color of the leaf to change from green to a grayish white. It flourishes in a dry atmosphere and in sunny places; shade and moisture are not favorable to its development.

re to lay  
at those  
brood of  
are seen.

larva,  
)

*Remedy.*—1. Spray with clear water, and keep the atmosphere about the plants moist.

2. Spraying with kerosene emulsion should also be followed by good results.

## 20. PLANT LICE.—*Aphidae*.

Aphides are a numerous class of insects which infest many plants and trees. They injure the leaves by sucking the sap. The green aphid, *Aphis mali*, is especially injurious to the apple tree. The eggs are deposited in the autumn in cracks of the bark of the twigs and around the buds. When deposited they are a greenish color, but grow gradually darker until they are a shining black.

They hatch in the spring just as the buds are swelling, and the tiny lice locate themselves upon the buds and upon the underside of the young leaves, which soon curl over them, making it difficult to treat them. They multiply with great rapidity, and cause considerable damage to the foliage and young shoots.

*Remedy.*—Spray with kerosene emulsion, whale-oil soap solution or tobacco decoction, as soon as the lice hatch, being careful to touch everyone of them, as these substances kill only by contact.

## 21. THE CLOVER MITE.—*Bryobia pratensis*, Gorman.

During the winter there may be seen upon the branches, around the crotches, and sometimes covering the trunks of trees, masses of rather large, round, reddish eggs. These are the eggs of the clover mite, and are very numerous in some Ontario orchards this year. The mites hatch about the month of May. Their presence on the leaves of fruit trees causes them to assume an unhealthy yellow appearance.

In Colorado and other western mountain states it is reported as one of the principal enemies of deciduous fruit trees, such as apple, pear, peach, plum, cherry, etc.

*Remedy.*—The eggs may be destroyed by spraying the trees in winter with kerosene emulsion diluted with five parts water. When they have hatched use any of the remedies given for plant lice.

## 22. SAN JOSE SCALE.

A special illustrated bulletin on the San Jose and other scale insects has been issued by the Ontario Department of Agriculture, Toronto. If you are interested send for it.

## INJURIOUS FUNGI.

The usual life-history of a parasitic fungus is, that it arises from a spore which is microscopic; this germinates and gives rise to thread-like structures which penetrate the plant upon which the fungus grows and derives its nourishment. Upon these structures in time spores are produced, as new sources from which the fungus may develop and continue to be injurious to the vitality of the plants attacked.

The following are among the most injurious fungi that affect the products of the garden and orchard. This can be readily controlled by the proper application of Bordeaux mixture, as directed:

This  
on the fru  
the spots

This  
small pim  
stunted.

Attac  
at first, th  
mified" a  
fruit shoul  
the disease

This f  
patches, wi  
spots with  
burning.

This d  
leaves of th  
somewhat  
and check b

This m  
warm, dry a  
are covered  
spraying wit

This fu  
affecting the

This fun  
it perfectly.

REMEDY  
branch two o  
the knot affe  
ture to preve

1. APPLE SPOT OR SCAB—*Fusicladium dendriticum*.

This fungus attacks the leaves and fruit of the apple, causing the "spots" on the fruit. The vegetative portion of the fungus is chiefly around the edge of the spots where the spores are produced in great numbers.

2. LEAF SPOT.—*Entomosporium maculatum*.

This disease attacks the pear, causing the leaves to show reddish spots with small pimples in the centre. When the fruit is attacked it cracks and appears stunted.

3. BROWN ROT.—*Monilia fructigena*.

Attacks plums, cherries and peaches. The fruit affected becomes brownish at first, then shrivels and appears dried. In this condition it is termed "mummified" and is often seen upon the trees in that form. All "mummified" fruit should be gathered and burned, as they contain spores that will perpetuate the disease.

4. ANTHRACNOSE—*Gloeosporium venetum*.

This fungus appears on the canes of raspberries as small round or oval patches, with a purple border, and sometimes upon the leaves as small yellowish spots with dark border. The affected canes should be cut out and destroyed by burning.

5. LEAF BLIGHT, OR SUNBURN.—*Sphaerella fragariae*.

This disease produces very conspicuous spots on the upper surface of the leaves of the strawberry. The spots are reddish at first, then the centre becomes somewhat grayish. Destroy by plowing up plants after first crop or prevent and check by Bordeaux spraying.

6. POWDERY MILDEW.—*Sphaerotheca mors uvae*.

This mildew is the well-known blight on the gooseberry. It thrives in a warm, dry atmosphere, and sometimes is very destructive. At first the berries are covered with a grayish substance, and later assume a brown color. Early spraying with Bordeaux mixture will prevent.

7. POTATO-BLIGHT.—*Phytophthora infestans*.

This fungus attacks the potato, commencing with the leaves and finally affecting the tubers.

8. BLACK-KNOT.—*Plowrightia morbosa*.

This fungus attacks plum and cherry trees. The name black-not describes it perfectly.

REMEDY. Cut out and burn every knot as soon as found, removing the branch two or three inches below the affected part. Make a thorough search for the knot after the leaves drop in the fall. Spray the trees with Bordeaux mixture to prevent new spores from becoming established.

9. MILDEW OF THE PEACH.

It is a fungus of the tips of shoots and young leaves. Syringe with soap-suds. Some mix lime water with the soap-suds and afterwards dust with sulphur. Good pruning and good growth are generally sufficient to prevent.

10. YELLOWS.

"Yellows" in peaches is a contagious disease, fatal to affected trees, and there is no known remedy but to dig out and burn root and branch.

11. LITTLE PEACHES.

A NEW DISEASE OF PEACH TREES.

A new disease of the peach, known as "little peaches," has done a great deal of damage in Michigan, and is reported from peach orchards on the Niagara River, in New York State, and some other points. The peach ceases to grow when it is about the size of a plum. The tree gradually loses vitality and dies. It is considered contagious and quite as bad as the "yellows." Remedy: Dig out and burn as soon as discovered.

SOME BENEFICIAL INSECTS.

Some insects may be classed among the friends of the fruit-grower and farmer. They feed upon some of the injurious forms of insect life—chiefly in



the larval stage—and in this way they help to lessen their ravages. Among these beneficial insects are:

COLEOPTERA (*Beetles*).

LADY-BIRDS.—Convex, nearly hemispherical, generally red or yellow, and spotted. They feed upon small insects and the eggs of larger species, and are



valuable for keeping plant lice in check, some of the varieties attacking the aphids feeding upon the leaves of the apple trees. Among the most beneficial are: Nine-spotted Lady-bird (Fig. 1), Fifteen-spotted Lady-bird (Fig. 2), Ten-

spotted Lady-bird (Fig. 3) represents t



Fig. 9.

GROUND SQUIRREL  
hiding in the  
They are val  
of injurious  
as the Calos  
of their food  
or Fiery Hu  
colored pits  
Searcher (Fi  
the body is r



Fig. 12.

MURRY  
are also benef  
TIGER B  
the orchardis

spotted Lady-bird (Fig. 3), Two-spotted Lady bird (Fig. 4), Convergent Lady-bird (Fig. 5), Comely Lady-bird (Fig. 6), Plain Lady-bird (Fig. 7) Fig. 8 represents the larval condition of the Nine-spotted Lady-bird.



Fig. 9.

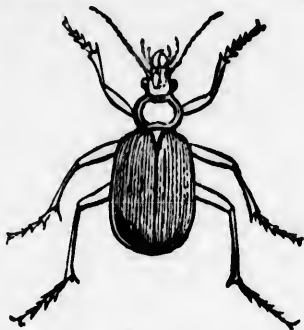


Fig. 10.



Fig. 11.

**GROUND BEETLES**—These are found living on the surface of the ground, hiding in the ground under stones or rubbish, or running through the grass. They are valuable helpers to the orchardist, as some of them feed upon the larvae of injurious insects, such as the pear midge, curculio, etc. Those beetles known as the *Calosoma* are caterpillar hunters, sometimes even climbing trees in search of their food. Two valuable species are *C. calidum*, or the Red-spotted, Glowing or Fiery Hunter, which may be easily recognized by the rows of reddish or copper colored pits on the wing covers (Fig. 9), and *C. scrutator*, or Beautiful Bodied Searcher (Fig. 10). The latter has green or violet wing covers, and the rest of the body is marked with violet, blue, gold, green and copper.



Fig. 12.



Fig. 13.



Fig. 14.

**MURRY GROUND BEETLES** known as *Harpalus* (Fig. 11), and *Pterostichus* are also beneficial to the agriculturist. The former is of a pitchy black color.

**TIGER BEETLES** (Figs. 12 and 13) are more valuable to the farmer than to the orchardist, and several species of these are quite common.

HYMENOPTERA (*Bees, Wasps, etc.*)

ICHNEUMON FLIES.—These are our most common parasites of injurious insects, chiefly among the butterflies and moths. The various species vary much in size, some being several inches in length and others of minute form. See Figs. 14 and 15). The most common are *Thalassa*, with a very long tail, parasitic on pigeon tremex, and *Ophion*, with yellow body, generally compressed, living on the polyphemus moth and yellow-necked caterpillar.



Fig. 15.

BRACONIDS.—Sometimes also called Ichneumon flies. *Macrogaster* lays eggs in the bodies of aphinx larvæ. The larvæ develop there, and just before the caterpillar perishes they leave it and spin their white, oblong, silken cocoons on its back. These egg-like bodies should not be disturbed, as adult *Microgaster*s will soon emerge.

*Aphidius* infests plant lice, but it is too small to be readily seen.

*Macrocentrus* (Delicate Lace String) is parasitic on codling moth, etc. (Fig. 16.)

CHALCIDS OR CHALCIS FLIES.—Small and parasitic. One species infests the cabbage butterfly, and others many troublesome larvæ.

VESPIDÆ OR WASPS.—These may be placed among the beneficial insects, as they subsist chiefly upon injurious forms.

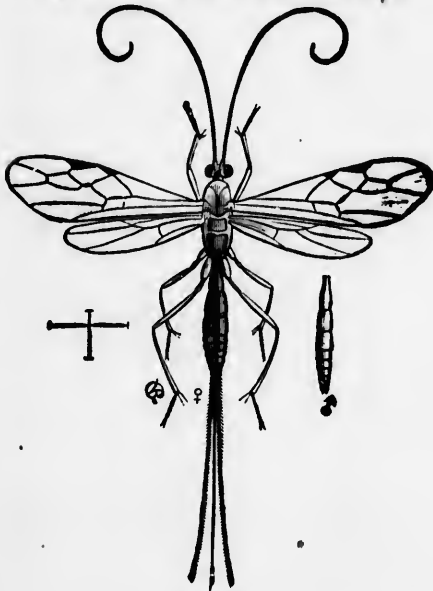


Fig. 16.

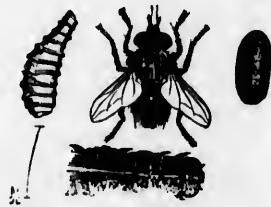


Fig. 17.

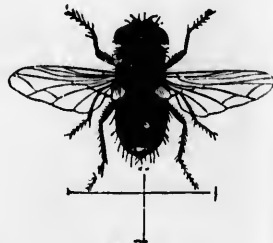


Fig. 18.

DIPTERA (*Flies—Two-winged*).

TACHINIDS.—The Tachina flies are larger than house flies. (Figs. 17 and 18) As valuable as the Ichneumon for parasitizing caterpillars, grasshoppers,

etc. Eggs worms are saw-fly lar abdomen, f  
SYRPH plant lice.



STINK BUG SOLDIER prominent, l

The lar aphids. (F DRAGON

AN ACT F I

1. This A
2. It shall unoccupied i
  - (1) To cut trees on his l
  - (2) To cut his land inf destroy all th
- 3.—(1) T incorporated villa payers, shall provisions of



etc. Eggs are laid on the surface of caterpillars, and the larvæ bore inside. Out worms are especially attacked by them. Many Tachina fly larvæ prey upon saw-fly larvæ. *Eristalis* preys upon aphids. *Pranachus*, with a long tapering abdomen, feeds upon clover midges.

**SYRPHIDS.**—The Syrphus flies are very valuable, as their larvæ feed upon plant lice. (Fig. 19.) Some live under ground and live upon apple root-lice.



Fig. 19.



FIG. 20.



Fig. 21.

#### HEMIPTERA (*Bugs*).

**STINK BUGS** or **SPINED SOLDIER BUGS** feed on larvæ of the potato beetle.

**SOLDIER BUGS.**—These are predacious on other insects. Head small, eyes prominent, beak short. Easily recognized. (Fig. 20.)

#### NEUROPTERA (*Four-Winged*).

The larvæ of lace wings are often found feeding on currant worms and aphids. (Fig. 21.)

**DRACON FLIES** are also classed among the beneficial insects.

### AN ACT FOR THE BETTER PREVENTION OF CERTAIN DISEASES AFFECTING FRUIT TREES.

Chap. 280, R.S.O. 1897.

1. This Act may be cited at *The Yellows and Black Knot Act*.
2. It shall be the duty of every occupant of land, or if the land be unoccupied it shall be the duty of the owner:
 

<ol style="list-style-type: none"> <li>(1) To cut out and burn all black knot found on plum or cherry trees on his land so often each year as it appears on such trees; and</li> <li>(2) To cut down and burn any peach, nectarine or other trees on his land infected with the disease known as the yellows, and to destroy all the fruit of trees so infected.</li> </ol>	Duty of owners and occupants of land.
---	---------------------------------------
- 3.—(1) The council of any county, city, town, township, or incorporated village, may, and upon a petition of fifteen or more rate-payers, shall by by-law, appoint at least one inspector to enforce the provisions of this Act in the municipality, and fix the amount of
 

Appointment of inspectors and board of fruit tree inspection.
---

remuneration, fees or charges he is to receive for the performance of his duties, and in case a vacancy shall occur in the office of inspector, it shall be the duty of the council to fill the same forthwith; and the council (in any municipality where peaches are grown) shall also by by-law appoint three or more persons resident in the municipality, who shall constitute a board of fruit tree inspection, to which appeals shall lie from the order of decision of the said inspector.

(2) The council may pass a by-law dividing the municipality into such sections or divisions as may be necessary for the carrying out of this Act, and may appoint inspectors for such divisions whose duties and powers shall in all respects be the same as that of the township inspector.

(3) Where an inspector is appointed by a county council, his duties shall be to aid the local inspectors in enforcing the provisions of this Act, and where no local inspector is appointed by a municipality the inspector appointed by the county council shall have all the powers of a local inspector within such municipality.

4. If written complaint be made to the inspector that yellows or black knot exists within the municipality, in any locality described in such complaint, with reasonable certainty, he shall proceed to examine the fruit trees in such locality, and if satisfied of the presence of either disease he shall immediately give notice in writing to the owner or occupant of the land whereon the affected trees are growing, requiring him within ten days from the receipt of the notice to deal with such trees in the manner provided by section 3 of this Act.

5—(1) It shall be the duty of every inspector appointed under this Act, by personal inspection to ascertain from time to time whether either of the diseases mentioned in this Act exists in the municipality, and to report thereon at least once a year to the municipal council, and wherever he is satisfied of the presence of either disease he shall proceed in the same manner as in case of a complaint made under section 4 of this Act.

(2) A copy of the annual report of the inspector shall be forwarded by the clerk of the municipality to the Minister of Agriculture.

6—(1) An owner or occupant to whom notice regarding yellows has been given by the inspector, under section 5 of this Act, may appeal therefrom, within the ten days limited therein, to the board of fruit tree inspection of the municipality.

(2) The owner or occupant so appealing, shall, within the said ten days, give notice in writing to the inspector that he requires an examination of the trees, in respect of which complaint is made, by the board of the fruit tree inspection, and shall name the day and hour at which the examination will take place.

Duties of  
county  
inspector.

Inspector to  
proceed upon  
written com-  
plaint.

Inspector to  
ascertain and  
report as to  
existence of  
diseases.

Report to  
Minister of  
Agriculture.

Appeal to  
board of fruit  
tree inspec-  
tion.

Notice of  
appeal.

(3) T  
notice in  
the atten-  
for the  
shall be  
inspector

(4) A  
members  
determin-  
owner or  
and the  
present

(5) Th  
members  
the perso-  
all proced-  
stayed, a  
inspector  
ceedings

(6) Ea  
for every  
shall be  
decides t  
municipa  
and the  
of the bo  
found lia

7.—(1  
by the in-  
remain o  
other tre  
shall upo  
more tha

(2) An  
or ships t  
tion, be l

(3) Ev  
required  
the dutie  
liable to

8.—E  
punished,  
and levie  
and one-h  
other per

(3) The person appealing shall also within the said ten days give notice in writing to three members of the said board that he requires the attendance of the members notified at the time and place named for the examination of the said fruit trees, and the date so fixed shall be not less than three days after the service of notice on the inspector and on the last member of the board so served.

Notice to board to attend and examine trees.

(4) At the day and hour named in the notice of appeal, the members notified shall attend and examine the trees in question, and determine whether or not the notice given by the inspector to the owner or occupant, under section 5 of this Act, was rightly given, and the decision of the said board or of a majority of the members present shall be final.

Examination by board.

(5) The decision of the board shall be in writing, signed by the members agreeing thereto, and a duplicate thereof shall be given to the person appealing and to the inspector, and pending such decision all proceedings against the owner or occupant appealing shall be stayed, and if the said board decides that the notice given by the inspector was wrongly given and was unnecessary, no further proceedings shall be taken thereon.

Decision by board.

(6) Each member of the said board shall be entitled to receive \$2 for every examination made by him under this section, and the same shall be paid by the owner or occupant appealing if the board decides that the notice of the inspector was rightly given, or by the municipality if the board decides that such notice was wrongly given, and the amount of said fees shall be stated in the written decision of the board, and shall be a debt due to the board from the party so found liable, recoverable in any division court having jurisdiction.

Fees of board.

7.—(1) Any owner or occupant of land who, after notice given by the inspector, as provided by section 4, suffers any black knot to remain on plum or cherry trees, or keeps any peach, nectarine or other trees infected with yellows or the fruit of trees so infected, shall upon conviction, be liable to a fine of not less than \$5 and not more than \$20 for every such offence.

Penalties.

(2) Any person who knowingly offers for sale or shipment, or sells or ships the fruit of trees infected with yellows, shall, upon conviction, be liable to a fine of not less than \$5 nor more than \$20.

(3) Every inspector who, after receiving the written complaint required by section 4, of this Act, refuses or neglects to discharge the duties imposed on him by this Act, shall, upon conviction, be liable to a fine of not less than \$10 nor more than \$20.

8.—Every offence against the provisions of this Act shall be punished, and the penalty imposed for each offence shall be recovered and levied, on summary conviction, before any justice of the peace; and one-half of every fine imposed shall be paid to the inspector or other person laying the information, and one-half to the treasurer of

Application of penalties.

the municipality in which the offence is committed, for the use of the municipality.

Council to require inspectors to perform their duties.

9.—The council of every municipality shall require its inspector or inspectors to faithfully discharge all their duties under this Act.

## ACT FOR THE PROTECTION OF INSECTIVOROUS AND OTHER BIRDS.

CHAP. 289, R. S. O. 1897.

HER MAJESTY, by and with the advice and consent of the Legislative Assembly of the Province of Ontario, enacts as follows:—

Rev. Stat c. 287 not affected.

Cage birds and poultry.

Birds that may be killed.

1. Nothing in this Act contained shall be held to affect *The Ontario Game Protection Act*, or to apply to any imported cage birds or other domesticated bird or birds generally known as cage birds or to any bird or birds generally known as poultry.

2.—(1) Except as in section 6 of this Act provided, it shall not be lawful to shoot, destroy, wound, catch, net, snare, poison, drug, or otherwise kill or injure, or to attempt to shoot, destroy, wound, catch, net, snare, poison, drug or otherwise kill or injure any wild native birds other than hawks, crows, blackbirds and English sparrows, and the birds especially mentioned in *The Ontario Game Protection Act*.

(2) Any person may, during the fruit season, for the purpose of protecting his fruit from the attacks of such birds, shoot or destroy, on his own premises, the bird known as the robin without being liable to any penalty under this Act.

Trapping and selling forbidden.

3. Except as in section 6 of this Act provided, it shall not be lawful to take, capture, expose for sale or have in possession any bird whatsoever, save the kinds hereinbefore or hereinafter excepted, or to set wholly or in part any net, trap, spring, snare, cage, or other machine or engine, by which any bird whatsoever, save and except hawks, crows, blackbirds, and English sparrows, might be killed and captured; and any net, trap, spring, snare, cage or other machine or engine, set either wholly or in part for the purpose of either capturing or killing any bird or birds save and except hawks, crows, blackbirds and English sparrows, may be destroyed by any person without such person incurring any liability therefor.

Nest, young or eggs not to be taken.

4. Save as in section 6 of this Act provided, it shall not be lawful to take, injure, destroy, or have in possession any nest, young, or egg of any kind whatsoever, except of hawks, crows, blackbirds, and English sparrows.

5. Any and carry t  
fiscated, an  
market cler  
confiscate,

6. The o  
*Game Prot*  
student of o  
cation and  
schedule he  
in said sche  
or exchange  
any time or  
study, with

7. The p  
tinue in for  
issued, and  
for the time

8.—(1) T  
the offender  
than twenty  
tion or comp

(2) The w  
convicting j  
collusion wi  
which case t  
ordinary case

(3) In def  
be imprison  
than two and  
justice.

9. No con  
in the form t  
mons or other  
injustice resu

AN AO

HER MAJ  
Legislat  
follows:—

1. No pers  
upon any land

5. Any person may seize, on view, any bird unlawfully possessed, and carry the same before any justice of the peace, to be by him confiscated, and if alive, to be liberated; and it shall be the duty of all market clerks and policemen or constables on the spot to seize and confiscate, and if alive, to liberate such birds.

Power to seize birds unlawfully possessed.

6. The chief game warden for the time being under *The Ontario Game Protection Act*, may on receiving from any ornithologist, or student of ornithology, or biologist, or student of biology, an application and recommendation according to the forms A and B in the schedule hereto, grant to such an applicant a permit in the form C in said schedule, empowering the holder to collect, and to purchase, or exchange all birds or eggs, otherwise protected by this Act, at any time or season he may require the same for the purposes of study, without the liability to penalties imposed by this Act.

Permit may be granted by chief game warden to ornithologists, etc.

7. The permits granted under the last preceding section shall continue in force until the end of the calendar year in which they are issued, and may be renewed at the option of the chief game warden for the time being under *The Ontario Game Protection Act*.

Duration of permit.

8.—(1) The violation of any provision of this Act shall subject the offender to the payment of not less than one dollar and not more than twenty dollars with costs, on summary conviction, on information or complaint before one or more justices of the peace.

Penalties.

(2) The whole of the fine shall be paid to the prosecutor unless the convicting justice has reason to believe that the prosecution is in collusion with and for the purpose of benefitting the accused, in which case the said justice may order the disposal of the fine as in ordinary cases.

Application of fines.

(3) In default of payment of the fine and costs, the offender shall be imprisoned in the nearest common gaol for a period of not less than two and not more than twenty days, at the discretion of the justice.

9. No conviction under this Act shall be quashed for any defect in the form thereof, or for any omission or informality in any summons or other proceedings under this Act so long as no substantial injustice results therefrom.

Conviction not invalid for want of form.

## AN ACT RESPECTING THE BARBERRY SHRUB.

63 Vic., chap. 48.

[30th April, 1900.

HER MAJESTY, by and with the advice and consent of the Legislative Assembly of the Province of Ontario, enacts as follows:—

1. No person shall plant the shrub known as the Barberry Shrub upon any lands used for farming purposes in the Province of Ontario,

Planting of barberry shrub prohibited.

Rev. Stat.  
c. 90.

nor upon any land situate within one hundred yards of any lands used for farming purposes, and every person guilty of the violation of this section shall be liable on summary conviction thereof before a justice of the peace, to a penalty not exceeding \$10, besides the costs of conviction, to be recovered as provided by *The Ontario Summary Convictions Act*.

Shrub where  
already  
planted on  
farm lands to  
be pulled up.

2. Where prior to the passing of this Act any person has planted or has growing upon or adjacent to lands owned or occupied by him and held and used for farming purposes any hedge or fence formed by the said shrub, he may be required by the council of the municipality in which the lands are situated to remove and destroy the same, and upon his neglect or refusal so to do within one month after the service of notice in writing regarding such removal and destruction, the council of the municipality may cause the same to be removed and destroyed, and in such cases the owner of the lands upon which the said shrub has been planted shall not be entitled to compensation for such removal and destruction.

Compensation  
for destruc-  
tion.

3. In case, upon receipt of notice or within thirty days thereafter, the owner or occupant of the lands upon which the said shrub is planted removes and destroys the same, he shall be entitled to compensation for such removal and destruction. The amount of such compensation may be agreed upon by such owner and the council of the municipality, or in default of agreement shall be determined in writing by the fence viewers of the municipality, and the amount so agreed upon or awarded shall be paid to the owner by the treasurer of the municipality out of the funds of the corporation.

## AN ACT FOR THE PREVENTION AND DESTRUCTION OF CERTAIN NOXIOUS INSECTS.

63 Vic. chap. 47.

[30th April, 1900.]

HER MAJESTY, by and with the advice and consent of the Legislative Assembly of the Province of Ontario, enacts as follows:—

Short title.

1. This Act shall be known as *The Noxious Insects Act*.

Adoption of  
Act by by-law.

2. The following provisions of this Act shall come into force and take effect as to every municipality the council of which shall by by-law declare this Act to be in force therein. The council may at any time repeal such by-law, and thereafter this Act and any regulations made thereunder shall cease to apply or be in force as to such municipality.

Regulations  
or destruction  
of insects.

3. Upon the recommendation of the Minister of Agriculture the Lieutenant-Governor in Council may make such regulations for the

prevention  
other plans  
come into  
two succes

4. Every  
by-law ad  
duties it s  
of this Ac  
the same t

5. In o  
to comply  
the Inspec  
within ten  
amount of  
that this s  
able, shall  
and shall l

6. Imm  
council for  
to be deliv  
printed co  
together w  
Inspector

7. Any  
hinder or p  
violation the  
be subject  
dollars, an  
the comm  
than twent

Copy  
Governor,

Upon  
the Comm  
Noxious I  
for the pre

1. It  
or if the la  
one week s  
hereinafter  
Upon all b  
age within

prevention and destruction of insects injurious to trees, shrubs and other plants as may be deemed advisable. Such regulations shall come into effect and have the force of law after the publication in two successive issues of *The Ontario Gazette*.

4. Every municipal council adopting this Act shall in and by the by-law adopting the same appoint one or more inspectors whose duties it shall be to inspect all orchards and to enforce the provisions of this Act and the regulations made thereunder, and to report upon the same to the council. Appointment of inspectors.

5. In case the occupant or the owner of any lot neglects or refuses to comply with this Act or with any regulations made thereunder, the Inspector may cause the necessary work to be done, and shall within ten days make a report in writing to the council stating the amount of the cost thereof and the council may thereupon direct that this amount or such part thereof as may appear to them equitable, shall be entered upon the collector's roll against such owner and shall be collected in the same manner as other taxes. Municipality may charge owner with work done.

6. Immediately upon the passing of a by-law by any municipal council for bringing this Act into force, the said council shall cause to be delivered to the occupant or owner of every lot affected, a printed copy of this Act and of the regulations made thereunder, together with a copy of the by-law and the name and address of the Inspector appointed to enforce the Act. Notice to be given to owners when Act applied.

7. Any person interfering with the Inspector, or attempting to hinder or prevent him in the enforcing of this Act, shall, upon conviction thereof, before any of Her Majesty's Justices of the Peace, be subject to a fine of not less than one dollar nor more than twenty dollars, and in default of payment of the same to be imprisoned in the common jail for the period of not less than ten days, nor more than twenty days. Penalty for violation of Act.

#### REGULATIONS.

Copy of an Order-in-Council approved by His Honour the Lieutenant-Governor, the 24th day of May, A.D. 1900.

Upon the recommendation of the Honourable the Minister of Agriculture, the Committee of Council advise that pursuant to the provisions of "The Noxious Insects Act" (63 Victoria, cap. 47), the following regulations be made for the prevention and destruction of the "Codling Moth."

1. It shall be the duty of every occupier of a lot within the municipality, or if the land be unoccupied, it shall be the duty of the owner of such lot, within one week after receiving notice as provided for in the Act, to place bands (as hereinafter described) upon the orchard trees located upon said lot as follows: Upon all bearing apple trees and pear trees, and upon all orchard trees of bearing age within forty feet of such bearing trees.

2. The bands shall be made of "Burlap" or "sacking," or similar suitable material, and shall be not less than four inches in width and of three thicknesses, and shall be securely fastened at a convenient point between the crotch of the tree and the ground.

3. The occupant or owner shall have these bands removed and inspected; all larvæ therein destroyed, and the bands replaced at intervals of not more than two weeks during the months of June, July and August.

---

### AN ACT FOR THE FURTHER PROTECTION OF BEES.

Chap. 282, R. S. O. 1897.

Use of poison  
in spraying  
fruit trees in  
bloom pro-  
hibited.

1. No person in spraying or sprinkling fruit trees, during the period within which trees are in full bloom, shall use or cause to be used any mixture containing Paris green or any other poisonous substance *injurious to bees*.

Penalties.

(2) Any person contravening the provisions of this Act, shall, on summary conviction thereof before a justice of the peace, be subject to a penalty of not less than \$1 or more than \$5, with or without costs of prosecution, and in case of a fine or a fine and costs being awarded, and of the same not being upon conviction forthwith paid, the justice may commit the offender to the common gaol, there to be imprisoned for any term not exceeding thirty days unless the fine and costs are sooner paid.

---

### DO NOT SPRAY TREES WHEN IN FULL BLOOM.

1. It is not the right time to spray.
  2. It may destroy insects that are then fertilizing the blossoms.
  3. It is destructive to bees.
  4. It is forbidden by law.
-



