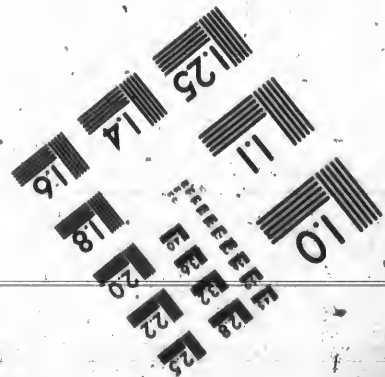
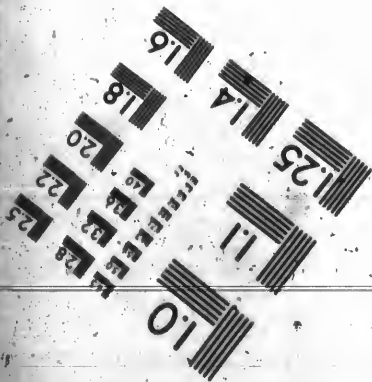
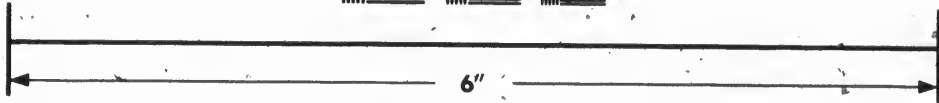
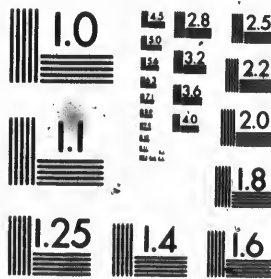


**IMAGE EVALUATION
TEST TARGET (MT-3)**



**Photographic
Sciences
Corporation**

23 WEST MAIN STREET
WEBSTER, N.Y. 14580
(716) 872-4503

**CIHM
Microfiche
Series
(Monographs)**

**ICMH
Collection de
microfiches
(monographies)**



Canadian Institute for Historical Microreproductions / Institut canadien de microreproductions historiques

© 1993

Technical and Bibliographic Notes / Notes techniques et bibliographiques

The Institute has attempted to obtain the best original copy available for filming. Features of this copy which may be bibliographically unique, which may alter any of the images in the reproduction, or which may significantly change the usual method of filming, are checked below.

L'Institut a microfilmé le meilleur exemplaire qu'il lui a été possible de se procurer. Les détails de cet exemplaire qui sont peut-être uniques du point de vue bibliographique, qui peuvent modifier une image reproduite, ou qui peuvent exiger une modification dans la méthode normale de filmage sont indiqués ci-dessous.

- Coloured covers/
Couverture de couleur
- Covers damaged/
Couverture endommagée
- Covers restored and/or laminated/
Couverture restaurée et/ou pelliculée
- Cover title missing/
Le titre de couverture manque
- Coloured maps/
Cartes géographiques en couleur
- Coloured ink (i.e. other than blue or black)/
Encre de couleur (i.e. autre que bleue ou noire)
- Coloured plates and/or illustrations/
Planches et/ou illustrations en couleur
- Bound with other material/
Relié avec d'autres documents
- Tight binding may cause shadows or distortion
along interior margin/
La reliure serrée peut causer de l'ombre ou de la
distorsion le long de la marge intérieure
- Blank leaves added during restoration may appear
within the text. Whenever possible, these have
been omitted from filming/
Il se peut que certaines pages blanches ajoutées
lors d'une restauration apparaissent dans le texte,
mais, lorsque cela était possible, ces pages n'ont
pas été filmées.

- Coloured pages/
Pages de couleur
- Pages damaged/
Pages endommagées
- Pages restored and/or laminated/
Pages restaurées et/ou pelliculées
- Pages discoloured, stained or foxed/
Pages décolorées, tachetées ou piquées
- Pages detached/
Pages détachées
- Showthrough/
Transparence
- Quality of print varies/
Qualité inégale de l'impression
- Continuous pagination/
Pagination continue
- Includes index(es)/
Comprend un (des) index

Title on header taken from: /
Le titre de l'en-tête provient:

- Title page of issue/
Page de titre de la livraison
- Caption of issue/
Titre de départ de la livraison
- Masthead/
Général (périodiques) de la livraison

Additional comments: / This copy is a photoreproduction.
Commentaires supplémentaires:

This item is filmed at the reduction ratio checked below/
Ce document est filmé au taux de réduction indiqué ci-dessous.

10X	14X	18X	22X	26X	30X
<input type="checkbox"/>	<input type="checkbox"/>	<input checked="" type="checkbox"/>	<input type="checkbox"/>	<input type="checkbox"/>	<input type="checkbox"/>
12X	16X	20X	24X	28X	32X

The copy filmed here has been reproduced thanks to the generosity of:

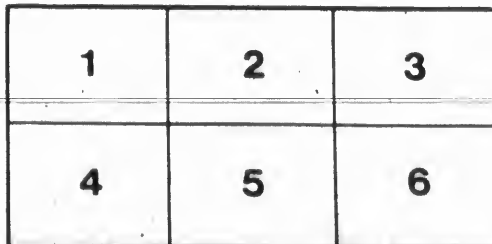
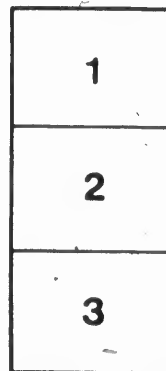
University of Victoria
McPherson Library

The images appearing here are the best quality possible considering the condition and legibility of the original copy and in keeping with the filming contract specifications.

Original copies in printed paper covers are filmed beginning with the front cover and ending on the last page with a printed or illustrated impression, or the back cover when appropriate. All other original copies are filmed beginning on the first page with a printed or illustrated impression, and ending on the last page with a printed or illustrated impression.

The last recorded frame on each microfiche shall contain the symbol \rightarrow (meaning "CONTINUED"), or the symbol ∇ (meaning "END"), whichever applies.

Maps, plates, charts, etc., may be filmed at different reduction ratios. Those too large to be entirely included in one exposure are filmed beginning in the upper left hand corner, left to right and top to bottom, as many frames as required. The following diagrams illustrate the method:



L'exemplaire filmé fut reproduit grâce à la générosité de:

University of Victoria
McPherson Library

Les images suivantes ont été reproduites avec le plus grand soin, compte tenu de la condition et de la netteté de l'exemplaire filmé, et en conformité avec les conditions du contrat de filmage.

Les exemplaires originaux dont la couverture en papier est imprimée sont filmés en commençant par le premier plat et en terminant soit par la dernière page qui comporte une empreinte d'impression ou d'illustration, soit par le second plat, selon le cas. Tous les autres exemplaires originaux sont filmés en commençant par la première page qui comporte une empreinte d'impression ou d'illustration et en terminant par la dernière page qui comporte une telle empreinte.

Un des symboles suivants apparaîtra sur la dernière image de chaque microfiche, selon le cas: le symbole \rightarrow signifie "A SUIVRE", le symbole ∇ signifie "FIN".

Les cartes, planches, tableaux, etc., peuvent être filmés à des taux de réduction différents. Lorsque le document est trop grand pour être reproduit en un seul cliché, il est filmé à partir de l'angle supérieur gauche, de gauche à droite, et de haut en bas, en prenant le nombre d'images nécessaire. Les diagrammes suivants illustrent la méthode.

R

Pr

UN

Me

RED ROSE DEGREE.

BY-LAWS

OF

Pride of the Island Lodge, No. 131,

SONS OF ENGLAND BENEVOLENT SOCIETY.

Instituted January 15th, 1891.

ESTABLISHED



A. D. 1874.

UNDER THE SUPREME JURISDICTION OF THE GRAND
LODGE OF CANADA.

Meetings held in St. George's Hall, corner of Government
and Bastion Streets, on the first and third
Wednesday in each Month.

VICTORIA, B. C.

JAMES A. COHEN, PRINTER, 38 FORT STREET.

1891.



BY-LAWS

OF

Pride of the Island Lodge, No. 131,

S. O. E. B. S.

VICTORIA, B. C.

AUGUST 1st, 1891.

NAME.

•CLAUSE 1.—This Lodge shall be known as “Lodge Pride of the Island, No. 131, of the Sons of England Benevolent Society,” and the charter is granted subject to clauses 45, 46 and 47 of the General Constitution.

OBJECTS.

CLAUSE 2.—The objects of this Lodge shall be as laid down in the Constitution of the general Order. (See clauses 1 and 2.)

4

BY-LAWS.

LODGE OFFICERS.

CLAUSE 3.—The executive officers of this Lodge shall be: W. President, W. Past President, W. Vice-President, W. Secretary, W. Treasurer, W. Chaplain, six Managing Committee and Inner and Outer Guard, Non-executive officers: Three Auditors, two Trustees, Surgeon, Finance Committee and a Sub-Secretary, if necessary.

DUTIES OF OFFICERS.

CLAUSE 4.—The duties of the officers of this Lodge shall be as laid down for such officers in the Constitution of the Order and By-Laws.

OPENING OF LODGE.

CLAUSE 5.—All Lodge meetings shall commence punctually at 7:45 p.m., and close at 9:45 p.m. except quarter-nights, and all officers not in their places at the time specified, without a reasonable apology, shall be fined 10 cents.

SECRETARY.

CLAUSE 6.—The Secretary, for his services, shall receive such sum as shall be decided upon by the Lodge from time to time.

SURGEON.

CLAUSE 7.—The Surgeon shall receive such

BY-LAWS.

sum as shall be agreed upon from time to time between the Lodge and himself, for all members not over three months in arrears. He shall attend all sick members living within the prescribed limits; any member living beyond said limits may have his share of the doctor's fee deducted from his dues if he wishes, said brother to be considered beyond medical attendance. The Doctor to furnish medicine free of charge.

FEEs AND CONTRIBUTIONS.

CLAUSE 8.—Sec. 1.—The following are the amendments made by Pride of the Island, No. 131, to Sections 85, 86 and 90:

Initiation fees—

18 to 30 years	\$ 3 00
30 to 35	“	5 00
35 to 40	“	8 00
40 to 45	“	12 00
45 to 50	“	15 00
50 to 55	“	30 00
55 to 60	“	40 00

Candidates to pay medical examination fee of 50 cents.

Sec. 2. — Members will pay uniform monthly dues of \$1.00.

BENEFITS.

CLAUSE 9.--At the expiration of twelve months from the date of their initiation, members will be entitled to \$8.00 per week for the first thirteen weeks, and \$4.00 per week for the next twenty-six weeks, sick benefits. Afterwards at option of Lodge. Half the above benefits will be allowed at the expiration of six months from their initiation. \$30.00 on the decease of his wife; \$7.00 on the death of any of his children between the ages of five and fifteen years; \$100.00 on the death of a member; less any sum or sums he may be owing his sub-lodge or the Supreme Grand Lodge. Members in good standing shall be entitled, in case of death, to half the above sums (or balance thereof) after the expiration of six months from their initiation, which shall be paid to the nominee or executors.

CLAUSE 10.--Members shall not be entitled to receive benefits from the Order who are more than three months in arrears, nor for the space of one month after all such arrears are paid. Providing a brother falls sick after he is three months in arrears, he shall not be entitled to any benefits during the said sickness. All arrears shall be deducted from his sick benefits. (See also Clauses 93, 94, 95 and 96.

CONTINGENT FUND.

CLAUSE 11.—There shall be a Contingent Fund, to be upheld by entertainments, sale of goods, fines or any donations given to the Lodge, which shall be used as the Lodge shall direct. In case of an emergency, the W. President, W. Secretary and W. Treasurer are authorized to disburse the said fund, and that two shall form a quorum.

FINES AND PENALTIES.

CLAUSE 12.—Sec. 1.—Every officer who shall be absent from Lodge shall be fined 10 cents, unless a valid excuse be given or an apology be made before opening of Lodge.

Sec. 2.—Members absent at Quarter night shall be fined 10 cents, unless an apology be sent; said Quarter nights shall be held on the last Lodge night in March, June and September, and the first Lodge night in December. A summons to such meeting shall be issued to each member seven days before such date.

Sec. 3.—Members refusing to abide by the decision of the President shall be fined 10 cents in each case; for using improper language or offensive personalities, 25 cents; appearing at any meeting intoxicated, \$1.00, and for the third offence to be expelled from

(sc)
H51805
C23V5

8

BY-LAWS.

the Order. Officers guilty of these offences will be fined double the foregoing amounts.

Sec. 4.—Any member receiving sick benefits from the Society shall not be allowed to do any kind of work whatever, neither frequent taverns or public houses, and should any member know of any infraction of this law without reporting the same to this Lodge, he shall be fined 50 cents in each case.

Sec. 5.—Members not paying their dues on Quarter night, unless by permission of the Lodge, shall be fined 10 cents.

ALTERATIONS OF BY-LAWS.

CLAUSE 13.—No alterations of these By-Laws shall take place unless by vote of the majority of members present at a special meeting called for that purpose, and approved by the Supreme Grand Lodge.

W. H. IRELAND, W. P.

J. PHILLIPS, W. P.P.

J. W. RUDD, W. V. P.

A. LEE, W. S.

W. H. SPOFFARD, W. T.

} Officers.

Examined and approved as amended May 11th, 1891, under seal of the Grand Lodge.

RICHARD IVENS, S. G. P.

JOHN W. CARTER,

Supreme Grand Lodge.

nces
ts.
ane-
l to,
fre-
ould
this
his
ach

on
the

By-
the
ial
v-

rs.

ay

e.

W. Howard and at the same time

10th May 1893

W. Howard

Regimental General

