

**CIHM  
Microfiche  
Series  
(Monographs)**

**ICMH  
Collection de  
microfiches  
(monographies)**



**Canadian Institute for Historical Microreproductions / Institut canadien de microreproductions historiques**

**© 1994**

Technical and Bibliographic Notes / Notes techniques et bibliographiques

The Institute has attempted to obtain the best original copy available for filming. Features of this copy which may be bibliographically unique, which may alter any of the images in the reproduction, or which may significantly change the usual method of filming, are checked below.

L'Institut a microfilmé le meilleur exemplaire qu'il lui a été possible de se procurer. Les détails de cet exemplaire qui sont peut-être uniques du point de vue bibliographique, qui peuvent modifier une image reproduite, ou qui peuvent exiger une modification dans la méthode normale de filmage sont indiqués ci-dessous.

- Coloured covers/  
Couverture de couleur
- Covers damaged/  
Couverture endommagée
- Covers restored and/or laminated/  
Couverture restaurée et/ou pelliculée
- Cover title missing/  
Le titre de couverture manque
- Coloured maps/  
Cartes géographiques en couleur
- Coloured ink (i.e. other than blue or black)/  
Encre de couleur (i.e. autre que bleue ou noire)
- Coloured plates and/or illustrations/  
Planches et/ou illustrations en couleur
- Bound with other material/  
Relié avec d'autres documents
- Tight binding may cause shadows or distortion  
along interior margin/  
La reliure serrée peut causer de l'ombre ou de la  
distorsion le long de la marge intérieure
- Blank leaves added during restoration may appear  
within the text. Whenever possible, these have  
been omitted from filming/  
Il se peut que certaines pages blanches ajoutées  
lors d'une restauration apparaissent dans le texte,  
mais, lorsque cela était possible, ces pages n'ont  
pas été filmées.
- Additional comments:  
Commentaires supplémentaires:

- Coloured pages/  
Pages de couleur
- Pages damaged/  
Pages endommagées
- Pages restored and/or laminated/  
Pages restaurées et/ou pelliculées
- Pages discoloured, stained or foxed/  
Pages décolorées, tachetées ou piquées
- Pages detached/  
Pages détachées
- Showthrough/  
Transparence
- Quality of print varies/  
Qualité inégale de l'impression
- Continuous pagination/  
Pagination continue
- Includes index(es)/  
Comprend un (des) index
- Title on header taken from:  
Le titre de l'en-tête provient:
- Title page of issue/  
Page de titre de la livraison
- Caption of issue/  
Titre de départ de la livraison
- Masthead/  
Générique (périodiques) de la livraison

This item is filmed at the reduction ratio checked below/  
Ce document est filmé au taux de réduction indiqué ci-dessous.

10X	12X	14X	16X	18X	20X	22X	24X	26X	28X	30X	32X
						✓					

The copy filmed here has been reproduced thanks to the generosity of:

Archives of Ontario  
Toronto

The images appearing here are the best quality possible considering the condition and legibility of the original copy and in keeping with the filming contract specifications.

Original copies in printed paper covers are filmed beginning with the front cover and ending on the last page with a printed or illustrated impression, or the back cover when appropriate. All other original copies are filmed beginning on the first page with a printed or illustrated impression, and ending on the last page with a printed or illustrated impression.

The last recorded frame on each microfiche shall contain the symbol  $\rightarrow$  (meaning "CONTINUED"), or the symbol  $\nabla$  (meaning "END"), whichever applies.

Maps, plates, charts, etc., may be filmed at different reduction ratios. Those too large to be entirely included in one exposure are filmed beginning in the upper left hand corner, left to right and top to bottom, as many frames as required. The following diagrams illustrate the method:



L'exemplaire filmé fut reproduit grâce à la générosité de:

Archives of Ontario  
Toronto

Les images suivantes ont été reproduites avec le plus grand soin, compte tenu de la condition et de la netteté de l'exemplaire filmé, et en conformité avec les conditions du contrat de filmage.

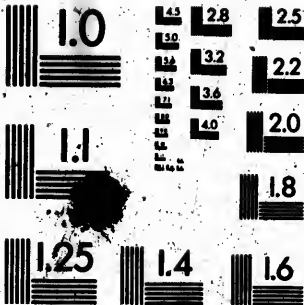
Les exemplaires originaux dont la couverture en papier est imprimée sont filmés en commençant par le premier plat et en terminant soit par la dernière page qui comporte une empreinte d'impression ou d'illustration, soit par le second plat, selon le cas. Tous les autres exemplaires originaux sont filmés en commençant par la première page qui comporte une empreinte d'impression ou d'illustration et en terminant par la dernière page qui comporte une telle empreinte.

Un des symboles suivants apparaîtra sur la dernière image de chaque microfiche, selon le cas: le symbole  $\rightarrow$  signifie "A SUIVRE", le symbole  $\nabla$  signifie "FIN".

Les cartes, planches, tableaux, etc., peuvent être filmés à des taux de réduction différents. Lorsque le document est trop grand pour être reproduit en un seul cliché, il est filmé à partir de l'angle supérieur gauche, de gauche à droite, et de haut en bas, en prenant le nombre d'images nécessaire. Les diagrammes suivants illustrent la méthode.

MICROCOPY RESOLUTION TEST CHART

(ANSI and ISO TEST CHART No. 2)



**APPLIED IMAGE, Inc**

1653 East Main Street  
Rochester, New York 14609 USA  
(716) 482-0300 - Phone  
(716) 288-5989 - Fax

# Voters' List.

1897

MUNICIPALITY

OF THE

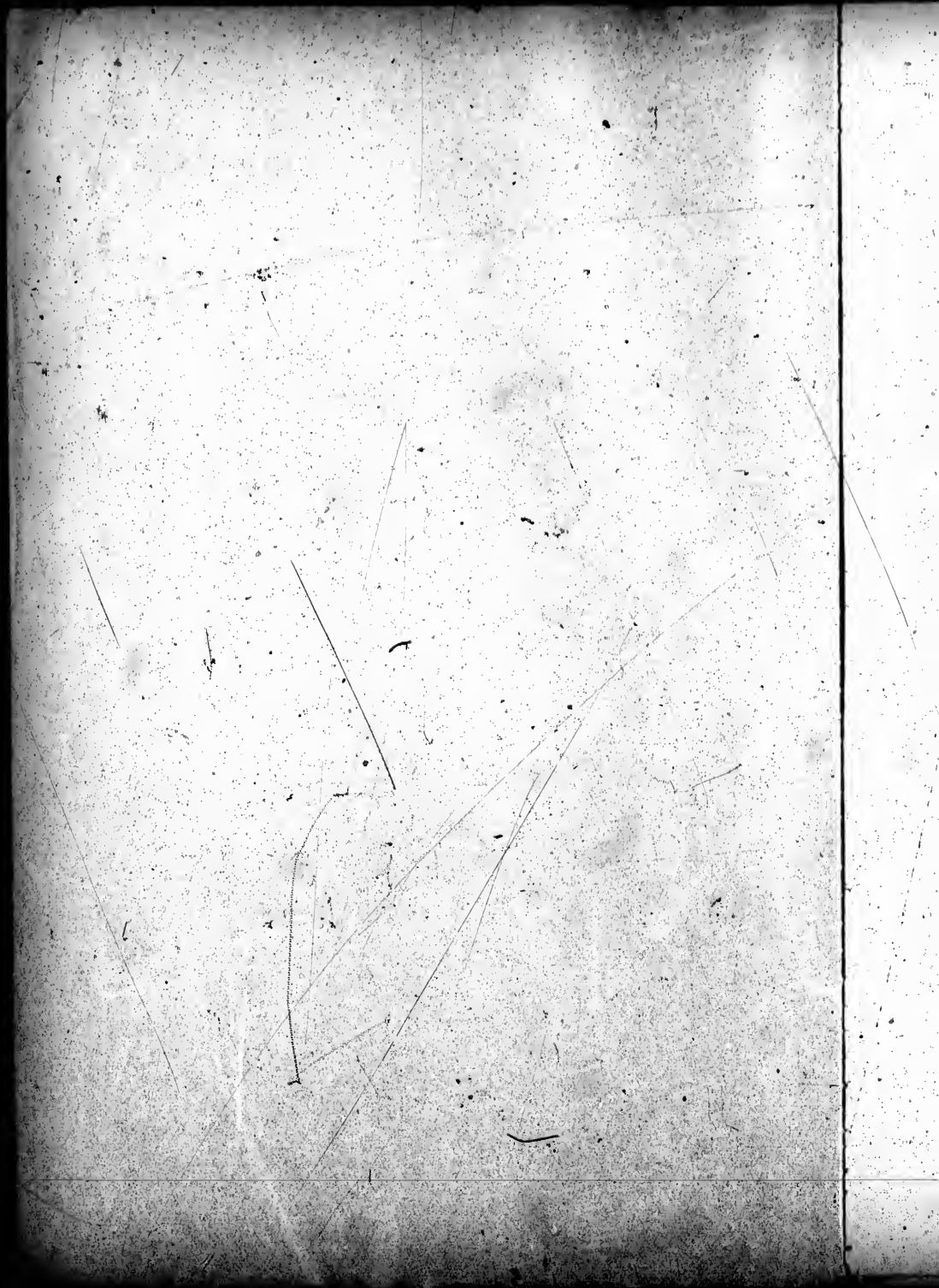
## Township of Stephenson

THE SHERIFF shall immediately upon receipt of his copies, cause one of them to be posted up in a conspicuous place in the Court House; the Clerk of the Peace, upon receipt of his copies, shall cause one of them to be posted up in a conspicuous place in his office; every Public or Separate School Master or Mistress shall in like manner post up one of his or her copies on the door of the School House; and every Post Master shall post up one of his copies in the Post Office.

—52 Vic. Chap. 3, Sec. 8.

BRACEBRIDGE:

Printed by A. E. Stephenson, Gazette Office.



# VOTERS' LIST, 1897.



Mun  
Doc  
11390  
TORONTO

*Municipality of the*

## - TOWNSHIP OF STEPHENSON. -



### SCHEDULE OF POST OFFICES.

1 Utterson	5 Parkersville	9 Huntsville	13 Toronto
2 Port Sydney	6 Beatrice	10 Bracebridge	14 Goodwood
3 Allansville	7 Raymond	11 Aspdin	15 Grimsby
4 Lancelot	8 Falkenburg	12 Orillia	16 Stratford

POLLING SUB-DIVISION NO. 1.—Comprising the South part of the Township from the 1st to the 9th Concessions, both inclusive, and Concession B.

PART I.—List of persons entitled to vote at both Municipal Elections and Elections to the Legislative Assembly.

No. on Roll.	Juror.	NAME	Occupation.	Lot	Con. or Street	P.O.
150		Addison, Thomas	farmer	21	6 m f and o	2
151		Addison, William	farmer	22	6 o p m f and o	2
180		Arthur, William	farmer	21 22	9 m f and o	1
289		Arthur, William	farmer	21 22	9 m f & fs	1
290		Arthur, Jeremiah	farmer	21 22	9 m f & fs	1
78		Baillie, Thomas	farmer	7	5 m f and o	1
116		Baillie, Richard	farmer	pt 5	6 m f and o	1
143		Bain, Daniel sr.	farmer	17	6 o p m f and o	1
144		Bain, William G.	farmer	17	6 o p m f & fs	1
145		Bain, Daniel jr	farmer	17	6 o p m f & fs	1
310		Bain, George	farmer	17	6 o p m f & fs	1
146		Balls, Walter	farmer	18	7 o p m f and o	1

No. on Roll.	Juror.	NAME	Occupation.	Lot	Con. or Street.	P.O.
147		Balls, James	farmer	18	7 o p	m f & fs 1
115		Baragor, Gordon	farmer	pt 5	7	m f and o 1
81		Becket, Charles	farmer	18	4	m f and o 1
82		Billingsley, Richard	farmer	14	4	m f and o 1
171		Botting, Edward	farmer	13	9	m f and o 1
50		Boyd, John	farmer	16	8	m f and o 5
181		Brown, James	farmer	21 22	8	m f and o 2
152		Brown, Archie	farmer	22	7 o p	m f and o 2
89		Brown, Robert D.	farmer	20	5 o p	m f and o 2
84		Brown, Robert	farmer	15 16	5	m f and o 2
128		Brown, Levarat	farmer	pt 10	6	m f and o 1
142		Brown, William	carpenter	pt 17	7	m f and o 1
108		Brown, Hugh	farmer	30	4	m f and o 2
161		Brymer, A. L. F.	gentleman	pt 25	5	m f and o 2
18		Bruce, John	farmer	11	1	m f and n 5
164		Butcher, George O	gentleman	40 47 48 Pt	Sydney	m f and o 2
141		Campbell, William	hotel keeper	pt 15	6	m f and o 1
48		Chalmers, William jr	farmer	15	8 o p	m f and o 5
49		Chalmers, William sr	farmer	15 18	2	m f and o 5
186		Clarke, William	farmer	25	8 o p	m f and o 2
188		Clarke, Arthur	farmer	24	8 o p	m f and o 2
164		Clarke, Louis	farmer	24	8 o p	m f and o 2
8		Cook, John	store-keeper	10	B	m f and o 6
9		Cook, Seymore	farmer	10	B	m f & fs 6
826		Cook, Herman	farmer	10	B	m f & fs 6
168		Chester, John F.	store-keeper	88 Brunel road		
14		Criekard, William sr	farmer	Port Sydney	o p	m f and o 1
132		Creasor, Robert	store-keeper	6 7	1	m f and o 5
10		Crowder, Jonathan	farmer	pt 15	6	m f and o 1
				12	B	m f and o 6
827		Douglas, John	farmer	18	2	m f and o 16
71		Dunn, Jeremiah	farmer	E 1 6	4	m f and o 1
80		Elliot, Robert	farmer	13	5	m f and o 1
88		Ellerton, James F	farmer	19	5	m f and o 2
41		Ermet, William	farmer	10	2	m f and o 5



P.O.

No. on Roll.	Juror.	NAME	Occupation.	Lot	Con. or Street	P.O.	
1		58	Esson, William	farmer	24	8 o p m f and o	2
1		65	Esson, Thomas	farmer	27	8 m f and o	2
1		278	Featron, Charles	farmer	26	9 o p m f and o	3
5		16	Finch, Jacob	farmer	9	1 o p m f and o	5
2		17	Finch, William	farmer	10	1 m f and o	5
2		15	Finch, Samuel	farmer	8	1 m f and o	5
2		68	Fleuning, John	farmer	80	2 o p m f and o	2
1		160	Forrest, William D	millor	8 9 Brunel road Port Sydney	o p m f and o	2
1		106	Gardner, James	farmer	82	5 o p m f and o	2
2		158	Geall, Charles J	farmer	81	7 o p m f and o	2
		159	Geall, Sydney T.	farmer	81	7 o p m f & fs	2
		328	Geall, Edward Harry	farmer	31	7 o p m f & fs	2
1		28	Graham, James	farmer	29	1 m f and o	2
5		30	Graham, Andrew	farmer	31	1 o p m f and o	2
5		31	Graham, Robert	farmer	32	1 m f and o	2
2		187	Hanes, Erastus	carpenter	pt 15	6 m f and o	1
2		186	Hanes, Nehemiah	farmer	14	6 o p m f and o	1
6		301	Hannen, William sr	farmer	6	9 o p m f and o	1
1		111	Hannen, Peter	farmer	8	6 m f and o	1
1		112	Hannen, William jr	farmer	8	6 m f and o	1
5		302	Hannen, John W	farmer	6	9 m f & fs	1
1		85	Hill, Eligah	farmer	6 8	8 m f and o	5
6		149	Hudson, James	farmer	21	7 m f and o	2
		61	Hughes, James	farmer	25	8 m f and o	2
		26	Hughes, George G	farmer	24	1 m f and o	2
		67	Hughes, David	farmer	28	2 m f and o	2
16		119	Hughes, Arthur	farmer	N 1 6	6 m f and o	1
1		121	Hughes, Thomas	farmer	pt 7	6 o p m f and o	1
		47	Hunter, James	farmer	14	2 o p m f and o	5
1		135	Ingram, William	laborer	pt 15	6 m f and o	1
2		180	Insley, Peter	blac sm th	pt 15	6 m f and o	1

No. on Roll.	NAME	Occupation.	Lot	Con. or Street	P.O.
48	Jacobs, Henry	farmer	18	2 m f and o	5
85	James, William	farmer	22	1 m f and o	1
154	Jenner, James	farmer	27	0 o p m f and o	2
179	Johnson, John	farmer	20	9 m f and o	2
91	Johnson, Jeremiah	farmer	31	5 m f and t	2
162	Jones, David	laborer	42 Brunel Road Port Sydney	m f and o	2
55	Kay, Alfred	farmer	21	2 o p m f and o	2
183	Kay, William J	Imp. agent	pt 15	6 o p m f and o	1
29	Keeler, John	farmer	29	1 o p m f and o	2
96	Kerr, Andrew	farmer	28	5 m f and o	2
97	Kerr, Alexander	farmer	24	5 m f and o	2
5	Kirbyson, George	farmer	7	B m f and o	2
178	Lankin, John	farmer	16	9 o p m f and o	1
84	Lance, Richard J	farmer	5	2 m f and o	6
140	Lankin, George W	store-keeper	pt 15	7 o p m f and o	1
52	Law, John	farmer	19	3 m f and o	5
58	Law, William	farmer	20	8 m f and o	5
153	Ladell, Herbert G	farmer	24	6 o p m f and o	2
100	Lever, John J	farmer	26 27	4 m f and o	2
79	Leith, Robert	farmer	12	4 m f and o	1
808	Lucky, John	farmer	2	8 m f and o	7
156	Mainhood, William	farmer	32	6 m f and o	2
157	Mainhood, Charles	farmer	33	8 m f and o	2
148	Marshall, Joseph	farmer	20	8 m f and o	2
189	Martin, John	laborer	pt 15	6 m f and o	1
22	McCamus, James	farmer	16	1 o p m f and o	10
178	McGown, John	section man	20	8 m f and o	1
109	McKenzie, William	farmer	1	6 m f and o	1
84	Mitchell, Alexander	farmer	23 26	8 m f and o	2
166	Mitchell, Albert E.	minister	Brunel road Port Sydney	m f and o	2
44	Montgomery, W.D.	farmer	18	8 o p m f and o	5
68	McDonald, James	farmer	26 27	2 m f and o	2
175	Morgan, W. H. D.	farmer	18	8 m f and o	1
177	Morgan, John	farmer	19	8 m f and o	1
184	Mulveney, Charles	hotel keeper	pt 15	6 o p m f and o	1

No. on Roll.	Juror.	NAME	Occupation.	Lot	Con. or Street	P.O.
38		Newson, Jonathan	farmer	7	2 o p m f a n d o	5
39		Newson, John	farmer	8	2 m f a n d o	5
27		Nickason, James W	farmer	25	1 o p m f a n d o	2
59		Nickason, John	farmer	25	2 m f a n d o	2
60		Nickason, Louis	farmer	25	2 m f & f s	2
66		Nickason, George	farmer	28	3 m f & f s	2
64		Nickason, Samuel	farmer	26	3 m f a n d o	2
87		Nickason, John T	farmer	18	4 o p m f a n d o	2
2		O'Hara, George	farmer	4	B o p m f a n d o	6
51		Osborne, John H	farmer	16	6 o p m f a n d o	1
168		Ouderkirk, Wm. H	farmer	8	7 o p m f a n d o	7
6		Oliner, John	farmer	8	B m f a n d o	6
23		Oliver, John	farmer	19	1 m f a n d o	2
42		Parker, William	mill owner	12	2 o p m f a n d o	5
49		Parker, Ernest	farmer	12	2 o p m f & f s	5
311		Parker, Percy	farmer	12	2 o p m f & f s	5
40		Parker, Albert E. W	farmer	9 10	3 m f a n d o	1
20		Parker, Frederick	farmer	18 14	1 m f a n d o	5
172		Parker, George	farmer	4	8 o p m f a n d o	5
120		Patterson, John jr	farmer	pt 6	6 o p m f a n d o	1
118		Patterson, Albert	farmer	6	7 m f a n d o	1
119		Patterson, John sr	farmer	4	6 o p m f a n d o	1
11		Patterson, Richard	farmer	-18	B m f a n d o	7
113		Patterson, Hugh	farmer	4	6 m f a n d o	1
110		Patterson, James	farmer	pt 2	6 m f a n d o	1
7		Patterson, John J	farmer	9	B m f a n d o	6
37		Patterson, James	farmer	7	8 m f a n d o	5
86		Patterson, George	farmer	6	2 m f a n d o	5
98		Schwoob, Jacob	farmer	22	5 m f a n d o	2
98		Smith, A. Sydney	mill owner	26	6 o p m f a n d o	2
57		Smith, Ernest W	farmer	24	2 m f a n d o	2
33		Stevens, William	farmer	5	3 4 m f a n d o	6
304		Stevens, George W	farmer	5	3 4 m f & f s	6
9		Sword, Andrew	farmer	5	B m f a n d o	6
287		Sherwood, William	farmer	pt 30 31	2 m f a n d o	2
307		Steele, Thomas H	lumber man	3 4	4 o p m f a n d o	1

No. on Roll.	Juror.	NAME	Occupation.	Lot	Con. or Street	P.O.
101		Theobald, Charles J	farmer	28	4 m f and o	2
165		Thoms, William H	farmer	26	8 o p m f and o	2
82		Thompson, Henry	farmer	8 4	8 m f and o	6
117		Trusetter, George	farmer	pt 5	6 o p m f and o	1
182		Vincent, Harry T	farmer	28	9 o p m f and o	2
122		Wallace, Norman	farmer	S 1 7	6 o p m f and o	1
123		Wallace, Solomon	farmer	pt 8	6 m f and o	1
94		Watson, Adam	farmer	22	4 o p m f and o	2
86		Watson, Joseph	farmer	18	5 o p m f and o	2
125		Weir, Thomas	farmer	7 8	7 m f and o	1
77		Weir, James	farmer	11 12	5 m f and o	1
124		Weir, Joseph	farmer	9	8 o p m f and o	1
127		Weir, Alexander	farmer	7	9 m f and o	1
126		Weir, William	farmer	9 10	7 m f and o	1
74		Wilson, Robert	farmer	9	5 m f and o	1
75		Wilson, John	farmer	9	4 o p m f and o	1
76		Wilson, James	farmer	9	4 o p m f and o	1
78		Wilson, William	farmer	11	4 m f and o	1
180		Wingfield, John sr	farmer	14	7 o p m f and o	1
181		Wingfield, John jr	farmer	14	7 o p m f and o	1
104		Wheatly, Henry	farmer	81 82	4 m f and o	2

**PART II.—Persons entitled to vote at Municipal Elections ONLY.**

815	Andell, Charles	gentleman	82	2	owner	12
90	Brown, Arthur J	farmer	21	5	owner	2
88	Brown, Charles	farmer	15	4	owner	1
129	Cook, John	hotel keeper	12	6	o p owner	18
169	Champion, T.	gentleman	1	9	owner	9



No. on Roll.	NAME	Occupation.	Lot	Con. or Street	P.O.
165	Winton, Mrs. R		V lots Port	Sydn'y	owner 18
174	Young, Mrs. Marion	farmer	16	8	owner 1

**PART III.—Persons entitled to vote at Elections to the Legislative Assembly ONLY.**

291	Addison, William	section man	Ry section	house	mf	5
297	Brown, Thomas		17	9	m f	1
69	Fleming, George	farmer	88	8	m f	2
296	Goring, Thomas	millwright	Branel rd Pt	Sydney	m f	2
318	Hanes, John J	laborer	pt 15	6	m f	1
321	Hanes, John L	laborer	11	6	m f	1
809	Harber, William W	clerk	pt 15	7	m f	1
288	McClure, Matthew	clerk	Port Sydney		m f	2
294	McEntyre, John	milller	Port Sydney		m f	2
806	McKnight, Warran	section man	Utterson		m f	1
298	McKechnie, Thos. C	station master	Utterson		m f	1
820	Morrison, John	laborer	Utterson		m f	1
819	Mercier, Henry	laborer	Utterson		m f	1
322	Patterson, William	farmer	Utterson		m f	1
286	Taylor, William J	teacher	32	2	m f	2
292	Webb, Frederick	section man	Parkersville		m f	5
295	Whitmore, Edgar	carpenter	Port Sydney		m f	2
805	Wilson, Thomas M	minister	Utterson		m f	1

-9-

**POLLING SUB-DIVISION NO. 2.—Comprising the North part of the Township from the 10th to the 14th concessions, both inclusive.**

**PART I.—List of persons entitled to vote at both Municipal Elections and Elections to the Legislative Assembly:**

No. on Roll.	Juror.	NAME	Occupation.	Lot	Con. or Street	P.O.
267		Alcock, Thomas Ed	farmer	29	12	m f and o 8
268		Alcock, Frank	farmer	30	12	m f and o 8
269		Alcock, Thomas E	farmer	30	12	m f & f s 8
272		Auphlett, Richard	farmer	27	12	m f and o 8
206		Armstrong, Matthew	farmer	21	12	m f and o 8
247		Bentley, Joseph	farmer	18	14	m f and o 4
248		Bentley, James	farmer	20	13 14	m f and o 4
249		Bentley, John H	farmer	19	14	m f and o 4
218		Botting, William	farmer	6	11 12	m f and o 1
192		Brawn, Richard	farmer	11 14	11	m f and o 4
193		Brawn, Bertie	farmer	11 14	11	m f & f s 4
252		Bray, Daniel	farmer	27	14 o p	m f and o 9
207		Bradley, George	farmer	28	11	m f and o 8
209		Bradley, Joseph	farmer	29	11 o p	m f and o 8
382		Bradley, James	farmer	17	13	m f and o 4
282		Brown, William	farmer	17	12	m f and o 4
203		Bullan, William	farmer	25	10	m f and o 3
284		Campbell, Samuel	farmer	19	10	m f and o 8
288		Caswell, Thomas	farmer	25	18 o p	m f and o 2
259		Coldwell, John H	farmer	N 1/2 33	13	m f and o 9
194		Coldwell, Herbert	farmer	12 13	11	m f and o 4
285		Coulson, George	farmer	14 15	13	m f and o 4
283		Cook, Joseph	farmer	19	12	m f and o 4
244		Darling, Adam	farmer	13	14	m f and o 4
262		Delmage, John	farmer	W 1/2 33	12	m f and o 3
195		Dykes, Matthew	farmer	17	10 o p	m f and o 3
190		Fraser, Duncan	farmer	1	12	m f and o 1
216		Fraser, James	farmer	4	13	m f and o 7
257		Fowler, William J	farmer	33	14	m f and o 9

No. on Roll	Juror	NAME	Occupation	Lot	Con. or - Street	P.O.
278		Girvan, William	farmer	22	12 m f and 9	8
228		Groves, William	farmer	8 10	18 m f and 0	3
197		Grimes, Lucius	farmer	19	13 o p m f and 0	8
201		Grimes, Charles D	farmer	28	11 m f and 0	3
191		Grimes, Andrew	farmer	18 14	10 w f and 0	3
236		Hagan, John	farmer	pt 15	12 m f and 0	4
220		Hall, James	farmer	9	12 o p w f and 0	4
219		Hall, Thomas	farmer	7	12 18 m f and 0	4
217		Hall, John	farmer	5	12 18 m f and 0	4
268		Hares, Henry	farmer	82	12 m f and 0	8
264		Hares, Edward	farmer	E 1/2 38	12 w f and 0	8
243		Hemmings, C. B.	farmer	14 15	14 m f and 0	4
245		Hemmings, Wm. E	farmer	27	11 m f and t	4
246		Hemmings, C. F.	farmer	27	11 m f and t	4
222		Horning, Henry	farmer	12	12 o p m f and 0	4
270		Howard, Thomas	farmer	28	12 m f and 0	8
271		Howard, Albert	farmer	28	12 m f and 0	8
196		Johnson, Henry	farmer	20	10 m f and 0	8
261		Johnson, Edmund	farmer	31	18 m f and 0	8
255		Kelley, John	farmer	81	14 m f and t	9
198		Last, Harry	farmer	21	10 o p m f and 0	8
266		Madill, John H	farmer	31	12 o p m f and 0	8
227		Martin, George	farmer	18	12 m f and 0	4
228		Martin, John sr	farmer	14	12 m f and 0	4
229		Martin, Adam	farmer	14	12 m f & fs	4
280		Martin, Timothy	farmer	10	10 m f and 0	4
278		Matchett, Joseph	farmer	20	12 m f & fs	3
254		Mawhiney, Joseph	farmer	80	14 m f and 0	9
275		McKay, Allan	farmer	21 23	18 m f and 0	3
274		McMichael, John	farmer	20	12 m f and 0	8
208		McMillan, Alex'r	farmer	28 29	10 m f and 0	8
210		McMillan, Malcolm	farmer	80	10 o p m f and 0	3
205		McNichol, John	farmer	26	11 m f and 0	8
261		McNichol, James	farmer	24	11 o p m f & fs	3
242		Middleton, Thomas	farmer	12	14 m f and 0	4



NO. on Roll.	Jurat.	NAME	Occupation.	Lot	Con. or Street	P.O.
240		Millward, Joseph	farmer	5	14 o p m f and o	4
324		Muselo, Joseph	farmer	15 16	10 m f and o	8
225		Mitchell, Albert	farmer	12	13 m f and o	4
228		Murison, William	farmer	26	12 m f and o	8
224		Nelson, John	farmer	12	13 o p m f and o	4
200		Nichol, August	farmer	22	10 o p m f and o	8
329		Nichol, Charles	farmer	22	10 o p m f & f s	8
330		Nichol, August	farmer	22	10 o p m f & f s	3
211		Nottage, Henry	farmer	31	11 m f and o	3
281		Proudfoot, Alex	farmer	28 29	18 m f and o	8
199		Prebble, Stephen	farmer	21 22	11 m f and o	8
212		Snell, Charles	farmer	32	11 m f and o	3
231		Snell, James	farmer	17	12 o p m f and o	8
258		Stahls, Charles	farmer	28 29	14 m f and o	9
239		Stimpson, William G	farmer	15	11 12 m f and o	4
238		Stimpson, Fred	farmer	16	12 13 m f and t	4
250		Sullivan, John	farmer	24	14 m f and o	9
256		Smith, Silas	farmer	32	14 m f and o	9
221		Shafford, John	farmer	6 9	13 m f and o	9
189		Wainwright, Matthe	w farmer	3	10 m f and o	7
279		Warwood, James	farmer	28	12 m f and o	3
234		Webber, William	farmer	14 15	13 m f and o	4
285		Young, William	farmer	21 22	14 m f and o	1

**PART II.—Persons entitled to vote at Municipal Elections only.**

316		Banks, William A	jeweler	8	10 o p owner	18
257		Bray, Edward	farmer	26	14 owner	9
231		Bradley, Samuel	farmer	33	11 owner	9
258		Coldwell, Miss L	farmer	E 1 38	18 owner	9

No. on Roll.	NAME	Occupation.	Lot	Con. or Street	P.O.
833	Darling, John	farmer	16 17	14	owner 11
204	Gall, William	farmer	26 27	10	owner 8
226	Martin, Mrs. S	farmer	13	18	owner 4
277	Matchett, Mrs. M. J	farmer	28	18	owner 3
260	Mudill, Miss F. A.	farmer	82	18	owner 9
317	Mowbray, Charles	farmer	16 17	11	owner 18
215	McCaskil, Kenneth	farmer	8	18	owner 7
292	Proudfoot, Miss M. J	teacher	27	18	owner 8
265	Roper, Mrs. J		82 88	10	owner 18
188	Wainwright, Mrs. M. A.	farmer	1 2	10	owner 7
241	Willoughby, John	farmer	10 11	14	owner 4

**PART III.—Persons entitled to vote at Elections to the Legislative Assembly ONLY.**

814	Hannen, John	section man			mf	9
818	Keitch, Melvin	section man			m f	9
287	Webber, Headly	farmer	15	18	m f	4

I, DANIEL BAIN, Clerk of the Municipality of the Township of Stephenson, in the District of Muskoka, do hereby certify that parts 1 and 3 of the above list constitute a correct list for the year 1897 of all persons appearing by the last Revised Assessment Roll of the said Municipality to be entitled to vote at elections for members of Legislative Assembly; and parts 1 and 2 constitute a correct list for the said year of all persons appearing by the said Roll to be entitled to vote at Municipal Elections in the said Municipality; and I hereby call upon all electors to examine the said list, and if any omission or other errors are perceived therein; to take immediate proceedings to have the said error corrected according to law

Dated this 20th day of July, 1897.

**Daniel Bain,**  
Clerk of the Municipality of Stephenson,  
Utterson P.O.





