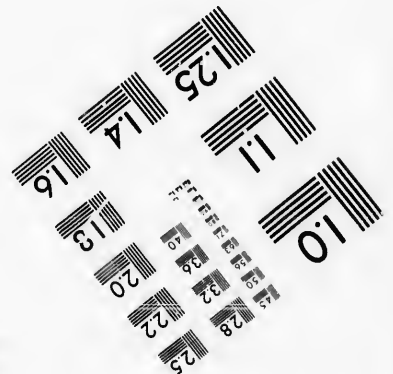
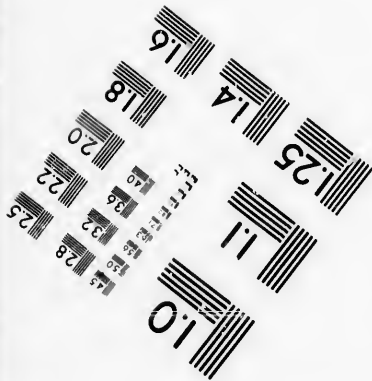
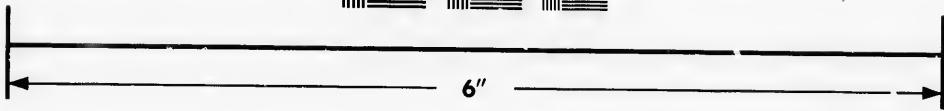
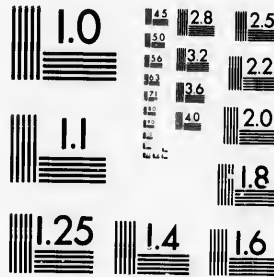


**IMAGE EVALUATION
TEST TARGET (MT-3)**



**Photographic
Sciences
Corporation**

23 WEST MAIN STREET
WEBSTER, N.Y. 14580
(716) 872-4503

23
22
21

**CIHM/ICMH
Microfiche
Series.**

**CIHM/ICMH
Collection de
microfiches.**



Canadian Institute for Historical Microreproductions / Institut canadien de microreproductions historiques

© 1986

Technical and Bibliographic Notes/Notes techniques et bibliographiques

The Institute has attempted to obtain the best original copy available for filming. Features of this copy which may be bibliographically unique, which may alter any of the images in the reproduction, or which may significantly change the usual method of filming, are checked below.

L'Institut a microfilmé le meilleur exemplaire qu'il lui a été possible de se procurer. Les détails de cet exemplaire qui sont peut-être uniques du point de vue bibliographique, qui peuvent modifier une image reproduite, ou qui peuvent exiger une modification dans la méthode normale de filmage sont indiqués ci-dessous.

- | | |
|--|--|
| <input type="checkbox"/> Coloured covers/
Couverture de couleur | <input type="checkbox"/> Coloured pages/
Pages de couleur |
| <input type="checkbox"/> Covers damaged/
Couverture endommagée | <input type="checkbox"/> Pages damaged/
Pages endommagées |
| <input type="checkbox"/> Covers restored and/or laminated/
Couverture restaurée et/ou pelliculée | <input type="checkbox"/> Pages restored and/or laminated/
Pages restaurées et/ou pelliculées |
| <input type="checkbox"/> Cover title missing/
Le titre de couverture manque | <input type="checkbox"/> Pages discoloured, stained or foxed/
Pages décolorées, tachetées ou piquées |
| <input type="checkbox"/> Coloured maps/
Cartes géographiques en couleur | <input type="checkbox"/> Pages detached/
Pages détachées |
| <input type="checkbox"/> Coloured ink (i.e. other than blue or black)/
Encre de couleur (i.e. autre que bleue ou noire) | <input type="checkbox"/> Showthrough/
Transparence |
| <input type="checkbox"/> Coloured plates and/or illustrations/
Planches et/ou illustrations en couleur | <input checked="" type="checkbox"/> Quality of print varies/
Qualité inégale de l'impression |
| <input type="checkbox"/> Bound with other material/
Relié avec d'autres documents | <input type="checkbox"/> Includes supplementary material/
Comprend du matériel supplémentaire |
| <input type="checkbox"/> Tight binding may cause shadows or distortion
along interior margin/
La reliure serrée peut causer de l'ombre ou de la
distorsion le long de la marge intérieure | <input type="checkbox"/> Only edition available/
Seule édition disponible |
| <input type="checkbox"/> Blank leaves added during restoration may
appear within the text. Whenever possible, these
have been omitted from filming/
Il se peut que certaines pages blanches ajoutées
lors d'une restauration apparaissent dans le texte,
mais, lorsque cela était possible, ces pages n'ont
pas été filmées. | <input type="checkbox"/> Pages wholly or partially obscured by errata
slips, tissues, etc., have been refilmed to
ensure the best possible image/
Les pages totalement ou partiellement
obscurcies par un feuillet d'errata, une pelure,
etc., ont été filmées à nouveau de façon à
obtenir la meilleure image possible. |
- Additional comments: [Printed ephemera] [2] p.
Commentaires supplémentaires:

This item is filmed at the reduction ratio checked below/
Ce document est filmé au taux de réduction indiqué ci-dessous.

10X	14X	18X	22X	26X	30X
<input type="checkbox"/>	<input type="checkbox"/>	<input type="checkbox"/>	<input checked="" type="checkbox"/>	<input type="checkbox"/>	<input type="checkbox"/>
12X	16X	20X	24X	28X	32X

The copy filmed here has been reproduced thanks to the generosity of:

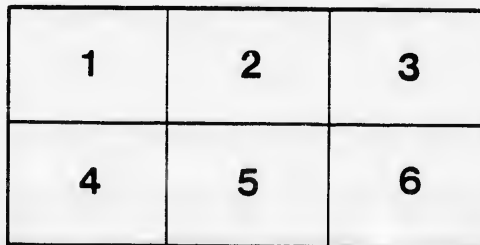
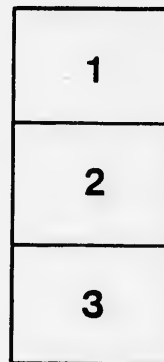
D. B. Weldon Library
University of Western Ontario
(Regional History Room)

The images appearing here are the best quality possible considering the condition and legibility of the original copy and in keeping with the filming contract specifications.

Original copies in printed paper covers are filmed beginning with the front cover and ending on the last page with a printed or illustrated impression, or the back cover when appropriate. All other original copies are filmed beginning on the first page with a printed or illustrated impression, and ending on the last page with a printed or illustrated impression.

The last recorded frame on each microfiche shall contain the symbol \rightarrow (meaning "CONTINUED"), or the symbol ∇ (meaning "END"), whichever applies.

Maps, plates, charts, etc., may be filmed at different reduction ratios. Those too large to be entirely included in one exposure are filmed beginning in the upper left hand corner, left to right and top to bottom, as many frames as required. The following diagrams illustrate the method:



L'exemplaire filmé fut reproduit grâce à la générosité de:

D. B. Weldon Library
University of Western Ontario
(Regional History Room)

Les images suivantes ont été reproduites avec le plus grand soin, compte tenu de la condition et de la netteté de l'exemplaire filmé, et en conformité avec les conditions du contrat de filmage.

Les exemplaires originaux dont la couverture en papier est imprimée sont filmés en commençant par le premier plat et en terminant soit par la dernière page qui comporte une empreinte d'impression ou d'illustration, soit par le second plat, selon le cas. Tous les autres exemplaires originaux sont filmés en commençant par la première page qui comporte une empreinte d'impression ou d'illustration et en terminant par la dernière page qui comporte une telle empreinte.

Un des symboles suivants apparaîtra sur la dernière image de chaque microfiche, selon le cas: le symbole \rightarrow signifie "A SUIVRE", le symbole ∇ signifie "FIN".

Les cartes, planches, tableaux, etc., peuvent être filmés à des taux de réduction différents. Lorsque le document est trop grand pour être reproduit en un seul cliché, il est filmé à partir de l'angle supérieur gauche, de gauche à droite, et de haut en bas, en prenant le nombre d'images nécessaire. Les diagrammes suivants illustrent la méthode.

LAKE ONTARIO

Long Branch Summer Resort

LOT No. 9, BROKEN FRONT CONCESSION, ETOBICOKE.

VILLA LOTS.

Price List, Season, 1889.

Subject to Change and Sales.

- **T**HIS delightful Summer Resort is fast filling up. There have been 33 Elegant Cottages erected during the past two seasons, surpassing anything of the kind in Canada. This Spring about 30 more are to be built, many of them now approaching completion. The rapid advance in ordinary property on account of the Asylum and other improvements in the neighborhood warrants us in anticipating a very rapid and immediate sale for this specially highly improved and beautifully wooded property, having the facilities of Steamboat Pier, Promenade, Hotel, Pavilion, Electric Lighting, Water Supply, Enclosure Protection, Telephone, Steamboat and Railway Communication, &c., &c.

Doubtless among your many friends there are those who would be glad to purchase, if the advantages of this popular resort were presented to them by you.

Accompanying this circular you will find a map of the Lake front district, a plan of the Long Branch property and Price List of lots. If as yet unacquainted with the progress of this Resort, we shall be glad to show you photographs of many of the Park buildings and cottages, at our offices, and after opening of navigation, will be pleased to hand you, or any friend a trip return pass per steamer, to view the property, which is sold under special registered conditions and Torrens Title.

LOTS NOT MENTIONED IN PRICE LIST ARE NOT FOR SALE.

STEAMBOAT SERVICE—SEASON 1889.

DURING MONTH OF MAY	}	LEAVE TORONTO	at	{ 7 and 10 a.m., 2 and 5 p.m.
		LONG BRANCH		{ 8 a.m., 1, 4 and 6 p.m.
DURING JUNE, JULY,	}	LEAVE TORONTO	at	{ 7, 9, 10, 11 a.m., 2, 3, 5, 7, 9 p.m.
AUGUST, SEPTEMBER		LONG BRANCH		{ 6, 8 and 10 a.m., 2, 4, 6, 7, 8 p.m.

RAILWAY SERVICE—SEASON 1889.

The time table for increased service to this point will shortly be issued by the G. T. Ry. for the Summer Season, and will be announced in due course.

Special Excursion Rates for Churches, Sunday Schools, Societies, &c.

RESERVES FOR CAMPERS.

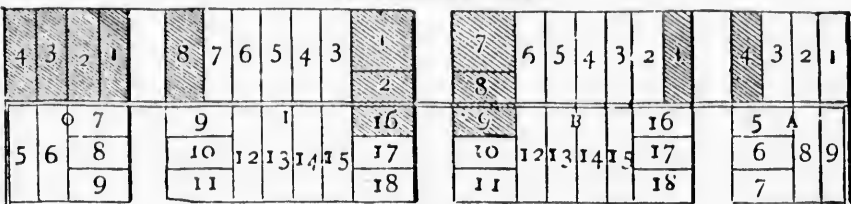
For further particulars apply to: CITY OFFICE.

LONG BRANCH SUMMER RESORT CO.,
Telephone 1772. 78 CHURCH ST., TORONTO.

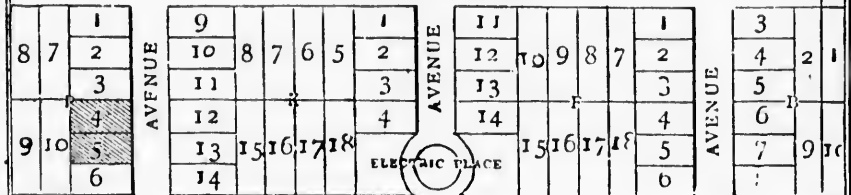
*The Commission
(M.L. ...)*

PROPOSED RAILROAD STATION 280 YARDS NORTH.

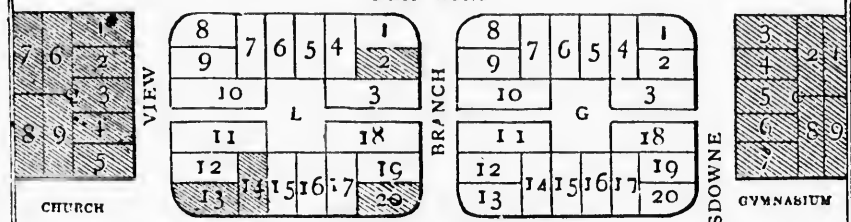
LAKE-SHORE ROAD



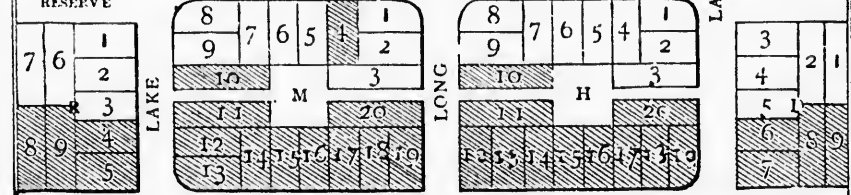
EDGEWOOD ROAD



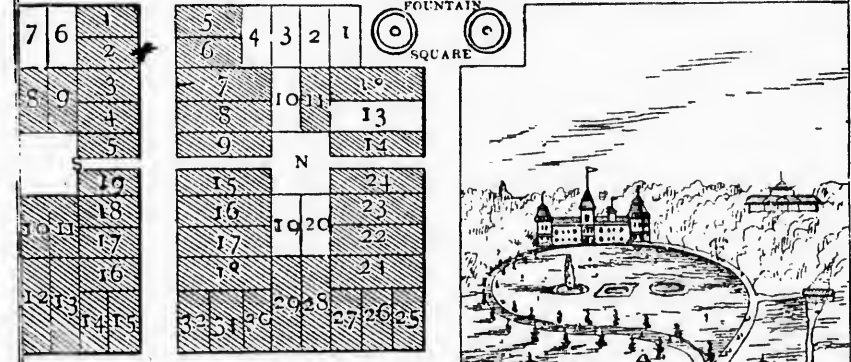
ELM ROAD



ARBOUR RESERVE

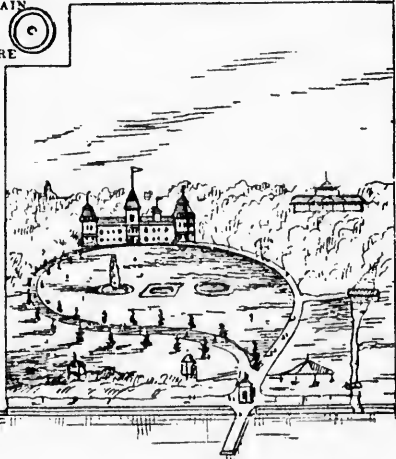


PARK ROAD



BEACH ROAD

LAKE-ONTARIO



PLAN OF LONG BRANCH

SUMMER RESORT PROPERTY.

